

Data Path : Z:\VOASRV\HPCHEM1\MSVOA_U\DATA\VU092418\
 Data File : VU027108.D
 Acq On : 24 Sep 2018 14:58
 Operator : MD/SY
 Sample : J4969-10
 Misc : 5.0mL/MSVOA_U/WATER
 ALS Vial : 17 Sample Multiplier: 1

Instrument :
 MSVOA_U
 ClientSampleId :
 FT-DUP07-20180917

Quant Time: Sep 25 01:35:20 2018
 Quant Method : Z:\VOASRV\HPCHEM1\MSVOA_U\METHOD\82U092218W.M
 Quant Title : SW846 8260
 QLast Update : Sat Sep 22 01:31:57 2018
 Response via : Initial Calibration

Internal Standards	R.T.	QIon	Response	Conc	Units	Dev(Min)
1) Pentafluorobenzene	4.99	168	92041	50.00	ug/l	0.00
34) 1,4-Difluorobenzene	5.89	114	156662	50.00	ug/l	0.00
63) Chlorobenzene-d5	9.09	117	151621	50.00	ug/l	0.00
72) 1,4-Dichlorobenzene-d4	11.48	152	71228	50.00	ug/l	0.00

System Monitoring Compounds

33) 1,2-Dichloroethane-d4	5.31	65	97879	52.84	ug/l	0.00
Spiked Amount	50.000		Recovery	=	105.68%	
35) Dibromofluoromethane	4.88	113	67229	49.51	ug/l	0.00
Spiked Amount	50.000		Recovery	=	99.02%	
50) Toluene-d8	7.57	98	255439	49.36	ug/l	0.00
Spiked Amount	50.000		Recovery	=	98.72%	
62) 4-Bromofluorobenzene	10.31	95	81924	46.13	ug/l	0.00
Spiked Amount	50.000		Recovery	=	92.26%	

Target Compounds

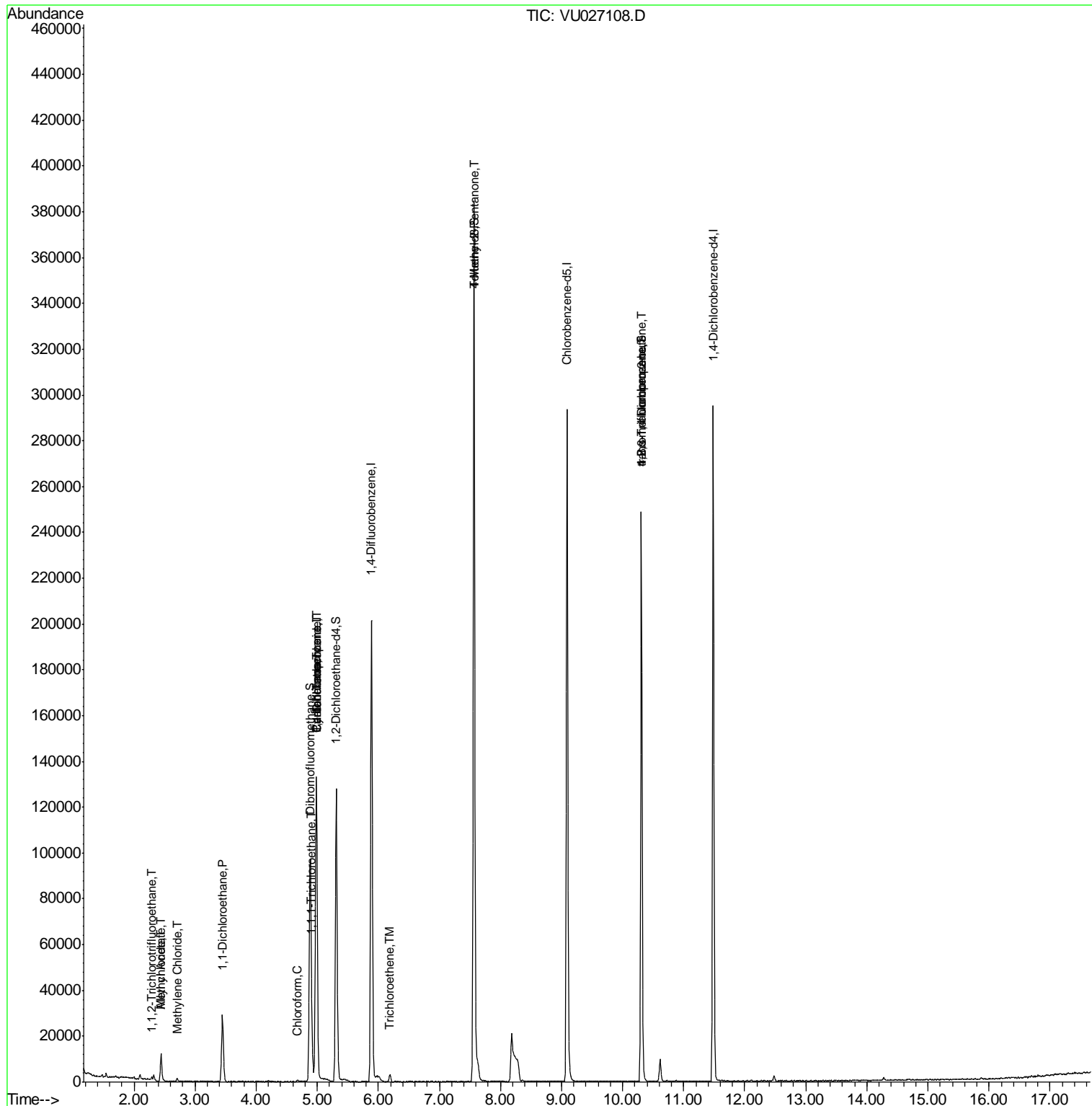
					Qvalue	
9) 1,1,2-Trichlorotrifluoroet	2.29	101	448	0.332	ug/l #	88
14) Allyl chloride	2.44	41	1257	0.488	ug/l #	71
16) Acetone	2.32	43	2685	Below Cal		95
18) Methyl Acetate	2.44	43	3213	1.219	ug/l #	55
20) Methylene Chloride	2.71	84	561	0.338	ug/l #	83
24) 1,1-Dichloroethane	3.45	63	32835	10.810	ug/l	99
30) Chloroform	4.68	83	624	0.221	ug/l	97
31) Cyclohexane	4.98	56	2334	0.273	ug/l #	1
32) 1,1,1-Trichloroethane	4.92	97	6218	2.762	ug/l	98
36) 1,1-Dichloropropene	4.99	75	8781	4.200	ug/l #	50
38) Carbon Tetrachloride	4.99	117	9537	4.793	ug/l #	18
44) Trichloroethene	6.19	130	1255	0.927	ug/l	92
51) 4-Methyl-2-Pentanone	7.57	43	1227	0.442	ug/l #	1
76) 1,2,3-Trichloropropane	10.31	75	44414	20.525	ug/l #	35
81) trans-1,4-Dichloro-2-buten	10.31	75	44414	65.684	ug/l #	100

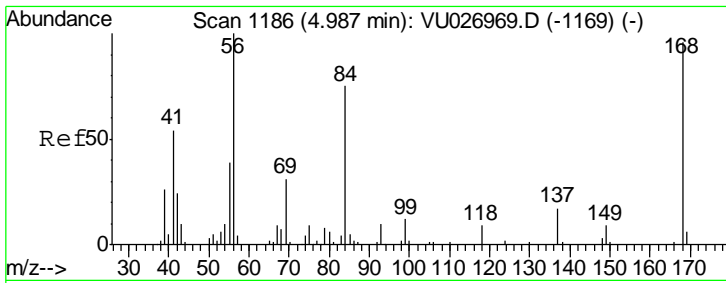
(#) = qualifier out of range (m) = manual integration (+) = signals summed

Data Path : Z:\VOASRV\HPCHEM1\MSVOA_U\DATA\VU092418\
 Data File : VU027108.D
 Acq On : 24 Sep 2018 14:58
 Operator : MD/SY
 Sample : J4969-10
 Misc : 5.0mL/MSVOA_U/WATER
 ALS Vial : 17 Sample Multiplier: 1

Instrument :
 MSVOA_U
 ClientSampleId :
 FT-DUP07-20180917

Quant Time: Sep 25 01:35:20 2018
 Quant Method : Z:\VOASRV\HPCHEM1\MSVOA_U\METHOD\82U092218W.M
 Quant Title : SW846 8260
 QLast Update : Sat Sep 22 01:31:57 2018
 Response via : Initial Calibration

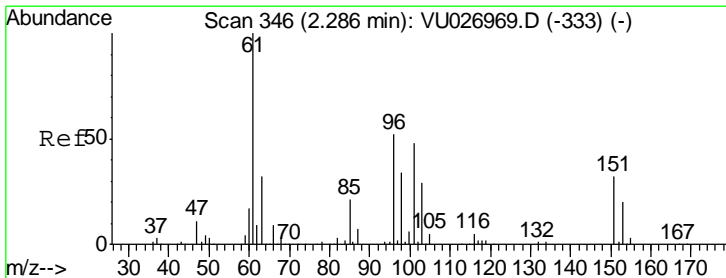
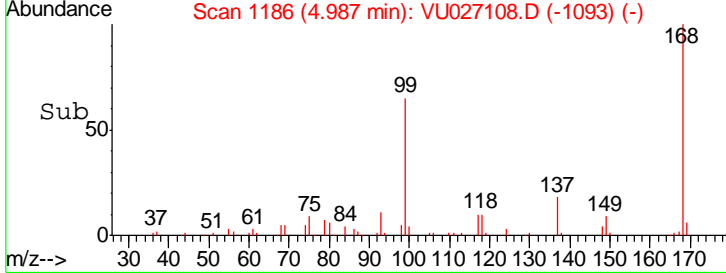
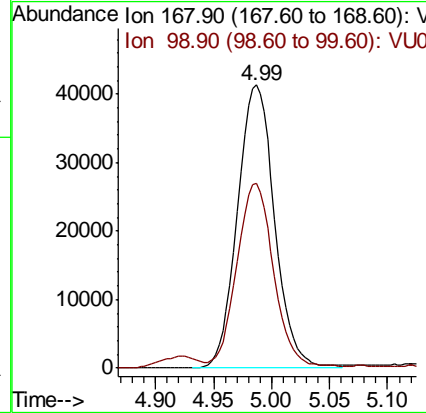
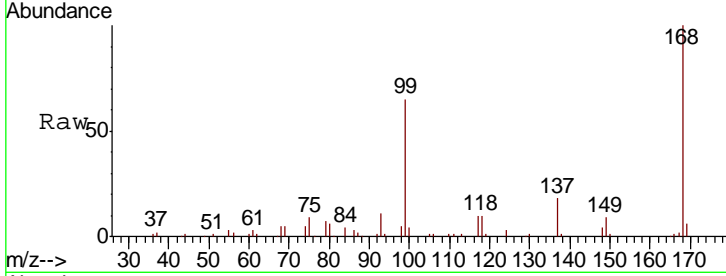




#1
 Pentafluorobenzene
 Concen: 50.000 ug/l
 RT: 4.99 min Scan# 1186
 Delta R.T. -0.00 min
 Lab File: VU027108.D
 Acq: 24 Sep 2018 14:58

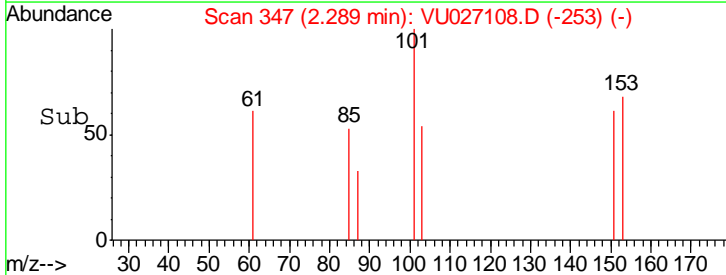
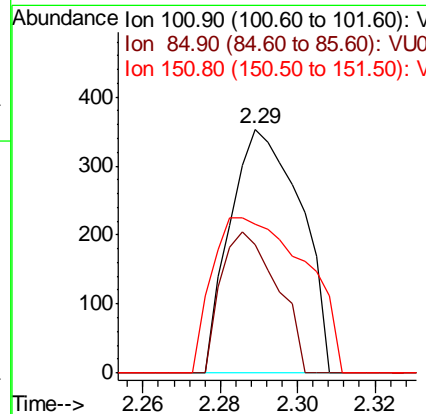
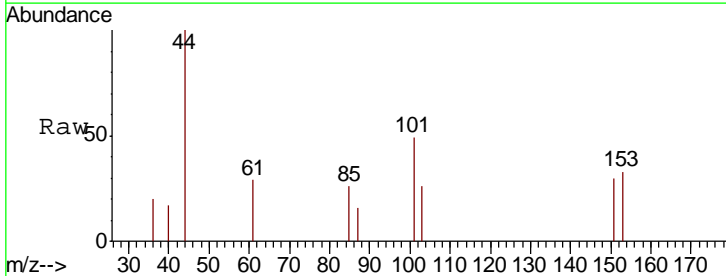
Instrument : MSVOA_U
 ClientSampleId : FT-DUP07-20180917

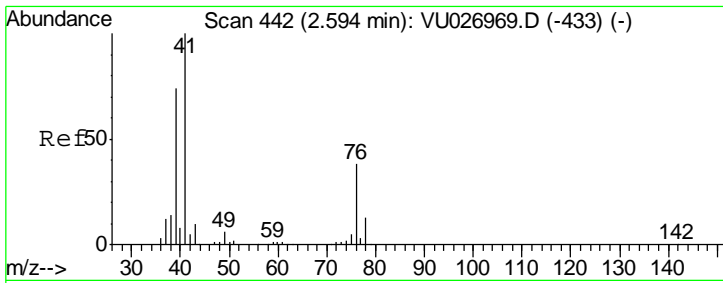
Tgt Ion: 168 Resp: 92041
 Ion Ratio Lower Upper
 168 100
 99 64.4 48.1 72.1



#9
 1,1,2-Trichlorotrifluoroethane
 Concen: 0.332 ug/l
 RT: 2.29 min Scan# 347
 Delta R.T. 0.00 min
 Lab File: VU027108.D
 Acq: 24 Sep 2018 14:58

Tgt Ion: 101 Resp: 448
 Ion Ratio Lower Upper
 101 100
 85 45.8 36.2 54.2
 151 83.9 54.5 81.7#

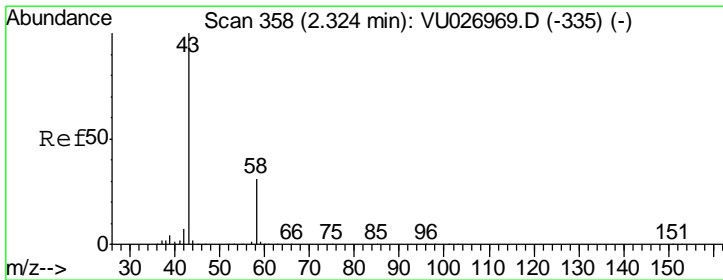
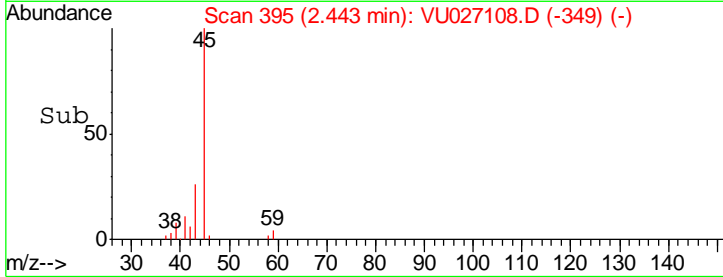
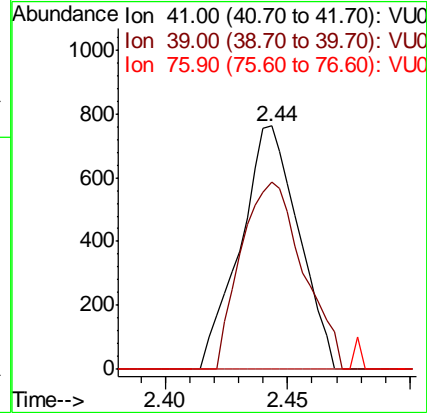
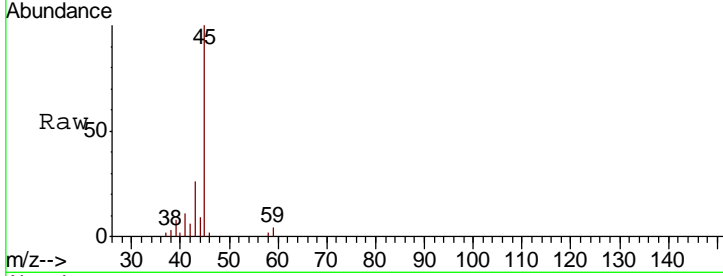




#14
 Allyl chloride
 Concen: 0.488 ug/l
 RT: 2.44 min Scan# 395
 Delta R.T. -0.15 min
 Lab File: VU027108.D
 Acq: 24 Sep 2018 14:58

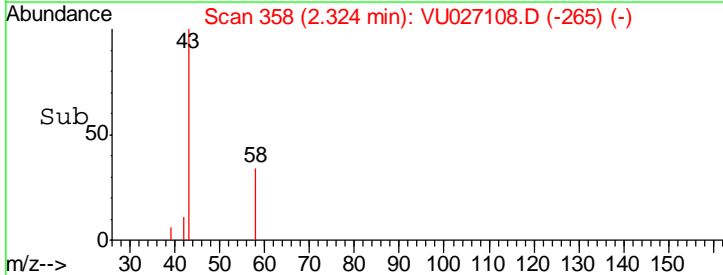
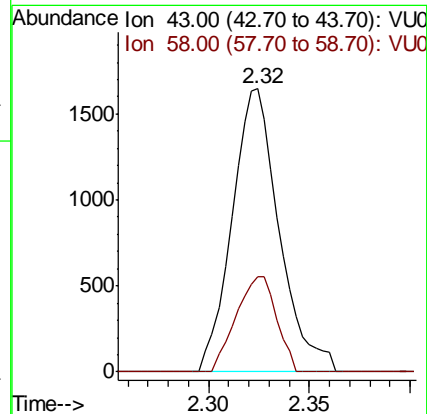
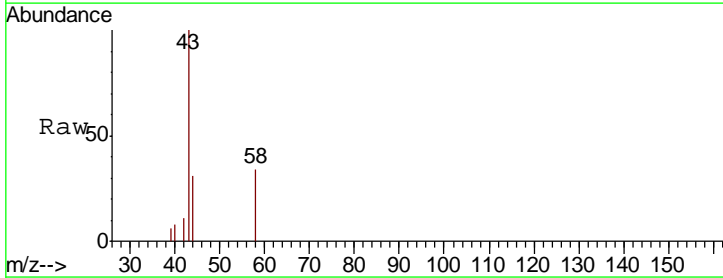
Instrument :
 MSVOA_U
 ClientSampleId :
 FT-DUP07-20180917

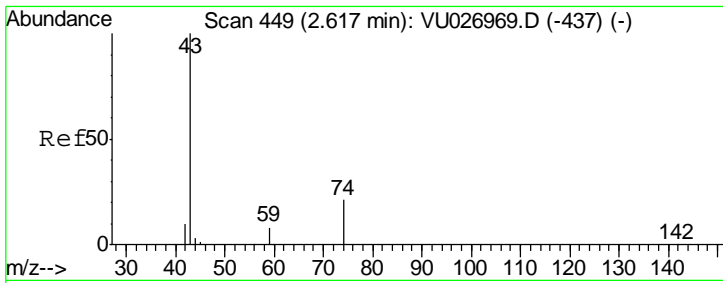
Tgt Ion	Resp	Lower	Upper
41	1257		
39	82.3	55.7	83.5
76	0.0	26.5	39.7#



#16
 Acetone
 Concen: Below Cal
 RT: 2.32 min Scan# 358
 Delta R.T. 0.00 min
 Lab File: VU027108.D
 Acq: 24 Sep 2018 14:58

Tgt Ion	Resp	Lower	Upper
43	2685		
58	33.6	24.6	36.8

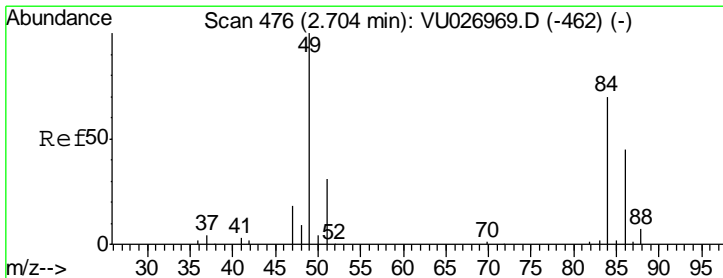
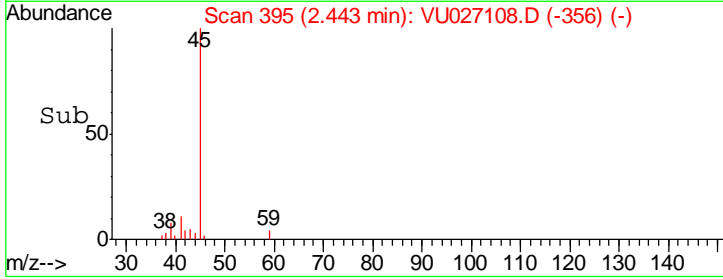
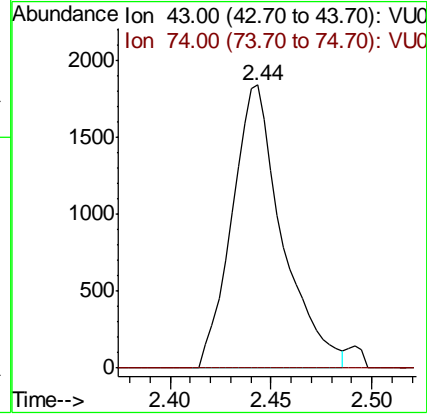
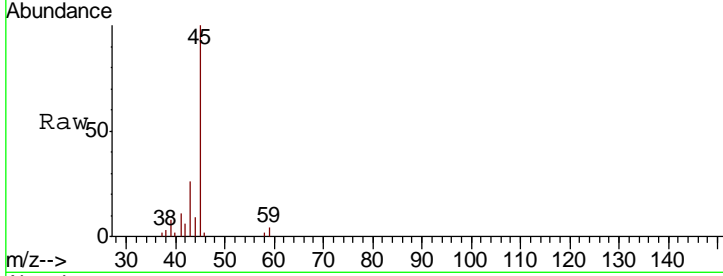




#18
 Methyl Acetate
 Concen: 1.219 ug/l
 RT: 2.44 min Scan# 395
 Delta R.T. -0.17 min
 Lab File: VU027108.D
 Acq: 24 Sep 2018 14:58

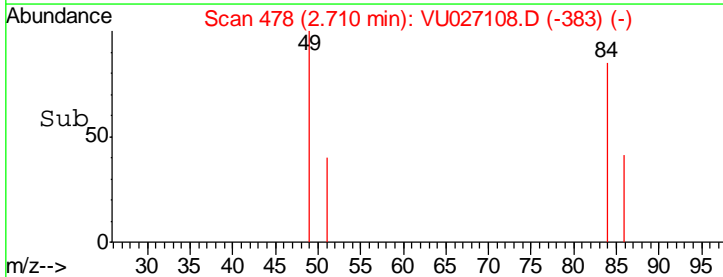
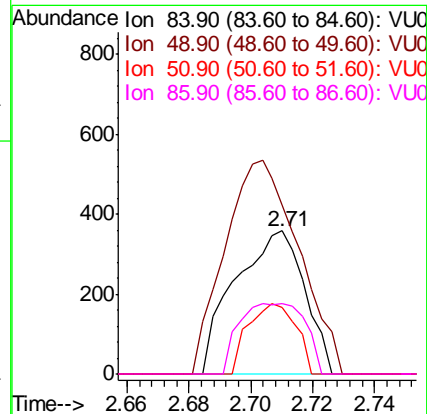
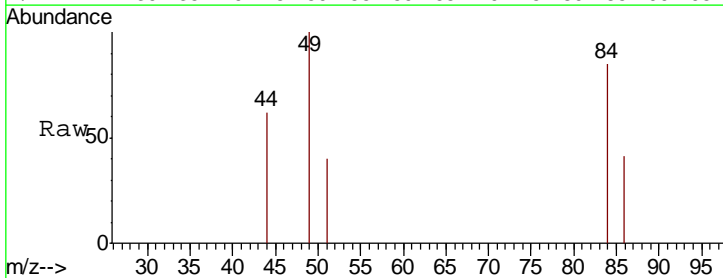
Instrument : MSVOA_U
 ClientSampled : FT-DUP07-20180917

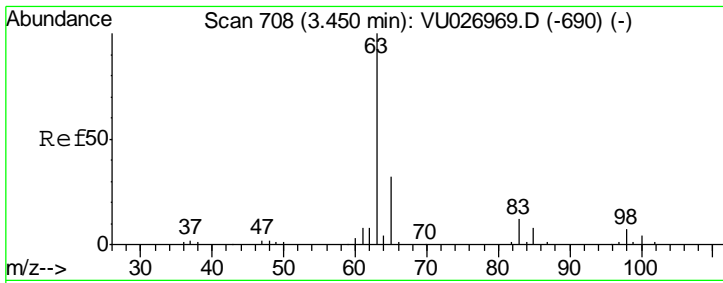
Tgt Ion	Resp	Lower	Upper
43	3213		
43	100		
74	0.0	16.6	25.0#



#20
 Methylene Chloride
 Concen: 0.338 ug/l
 RT: 2.71 min Scan# 478
 Delta R.T. 0.01 min
 Lab File: VU027108.D
 Acq: 24 Sep 2018 14:58

Tgt Ion	Resp	Lower	Upper
84	561		
84	100		
49	118.1	114.9	172.3
51	46.8	35.8	53.8
86	48.7	51.3	76.9#

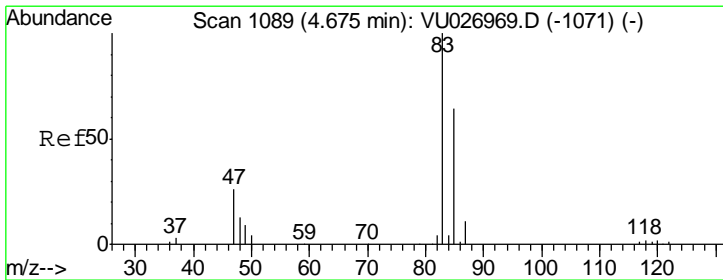
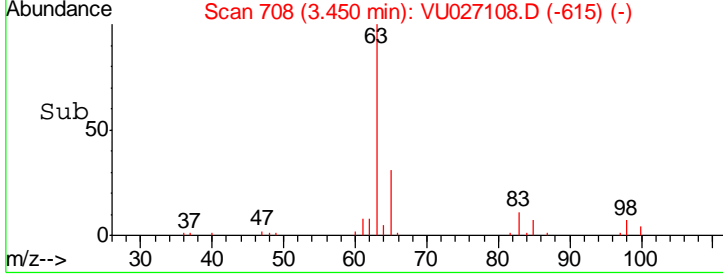
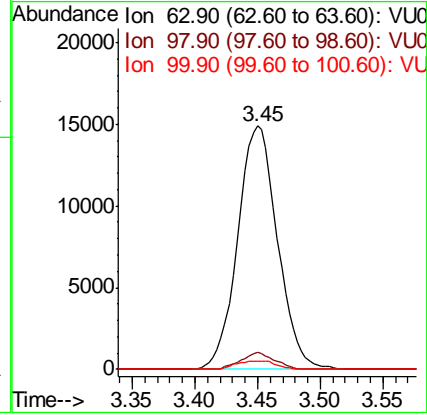
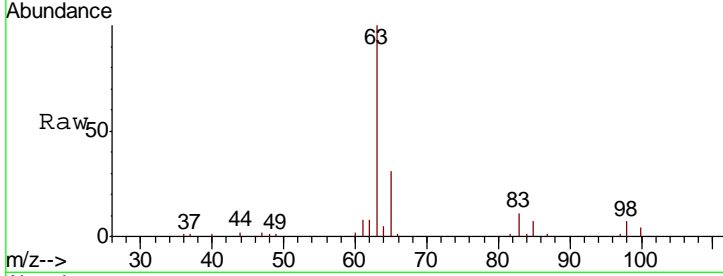




#24
 1,1-Dichloroethane
 Concen: 10.810 ug/l
 RT: 3.45 min Scan# 708
 Delta R.T. -0.00 min
 Lab File: VU027108.D
 Acq: 24 Sep 2018 14:58

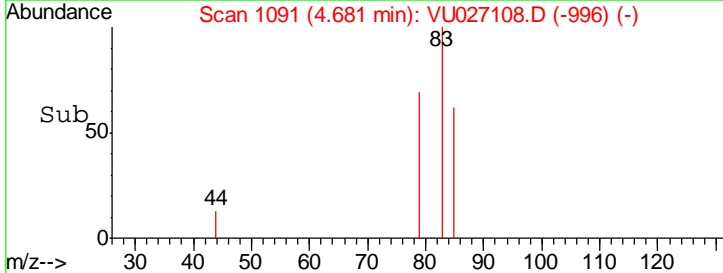
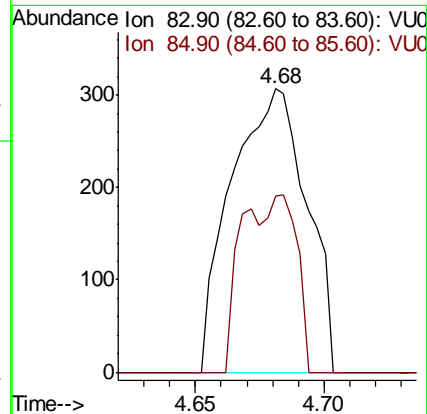
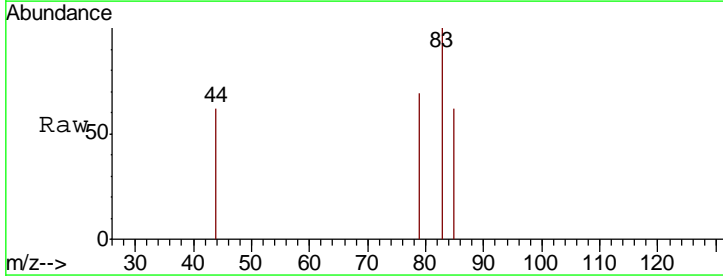
Instrument :
 MSVOA_U
 ClientSampleId :
 FT-DUP07-20180917

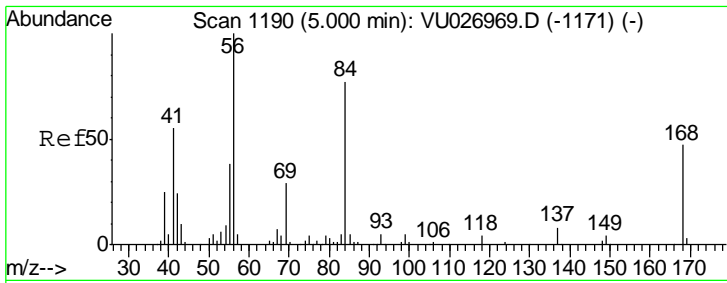
Tgt Ion	Resp	Lower	Upper
63	32835		
98	6.9	3.3	9.8
100	3.5	2.0	5.8



#30
 Chloroform
 Concen: 0.221 ug/l
 RT: 4.68 min Scan# 1091
 Delta R.T. 0.01 min
 Lab File: VU027108.D
 Acq: 24 Sep 2018 14:58

Tgt Ion	Resp	Lower	Upper
83	624		
85	61.9	51.5	77.3

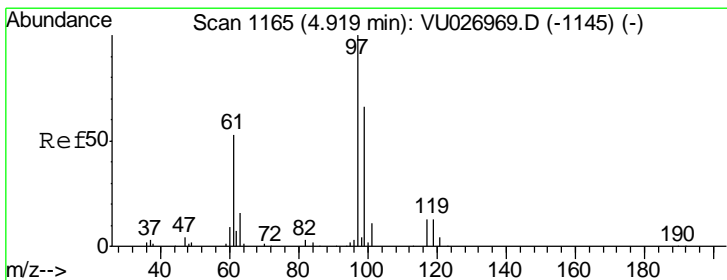
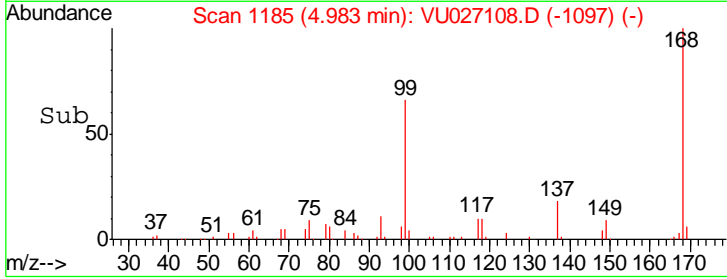
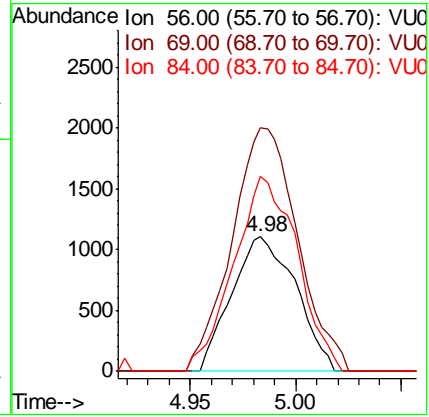
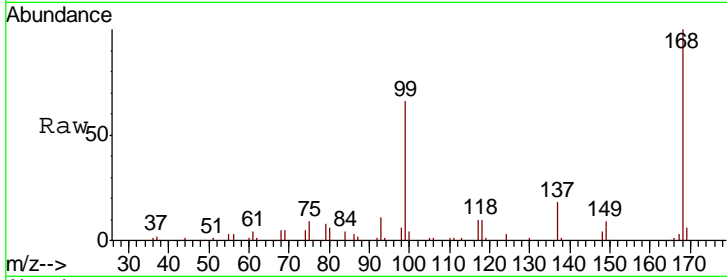




#31
 Cyclohexane
 Concen: 0.273 ug/l
 RT: 4.98 min Scan# 1185
 Delta R.T. -0.02 min
 Lab File: VU027108.D
 Acq: 24 Sep 2018 14:58

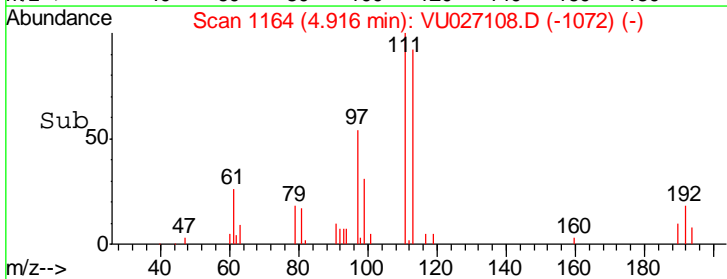
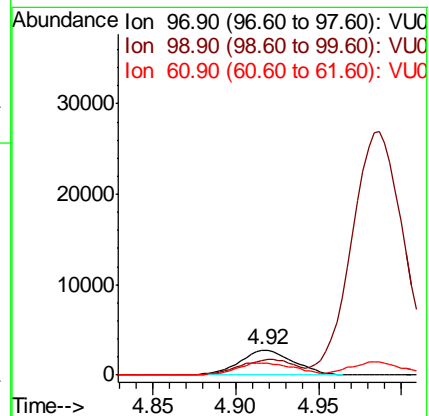
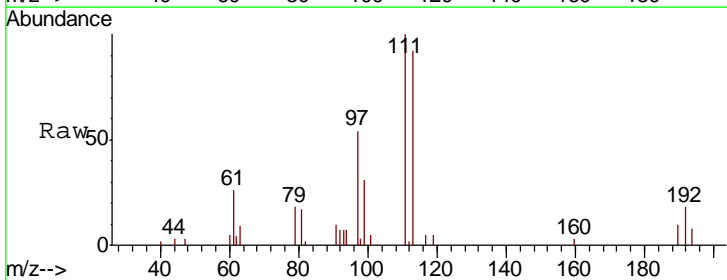
Instrument : MSVOA_U
 ClientSampled : FT-DUP07-20180917

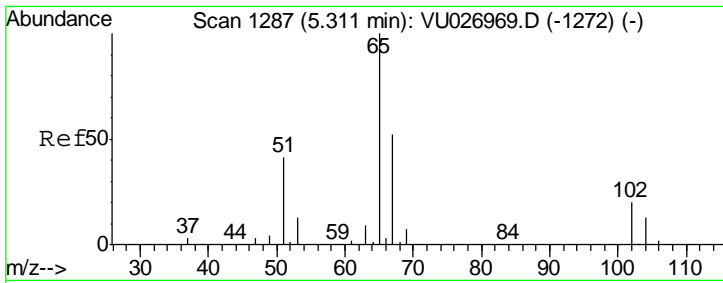
Tgt Ion	Resp	Lower	Upper
56	100		
69	169.1	23.0	34.4#
84	144.6	61.4	92.2#



#32
 1,1,1-Trichloroethane
 Concen: 2.762 ug/l
 RT: 4.92 min Scan# 1164
 Delta R.T. -0.00 min
 Lab File: VU027108.D
 Acq: 24 Sep 2018 14:58

Tgt Ion	Resp	Lower	Upper
97	100		
99	62.8	51.8	77.6
61	52.7	41.1	61.7

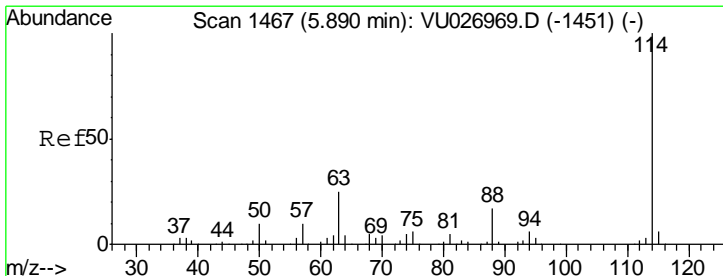
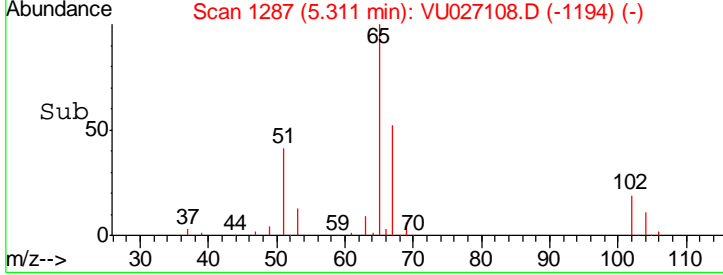
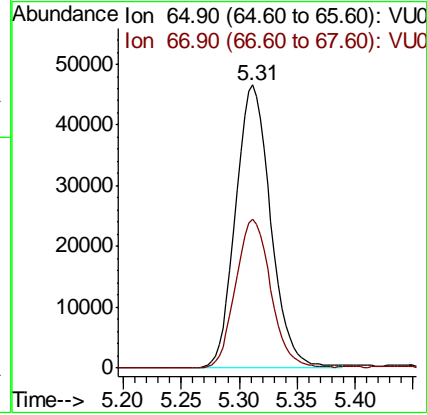
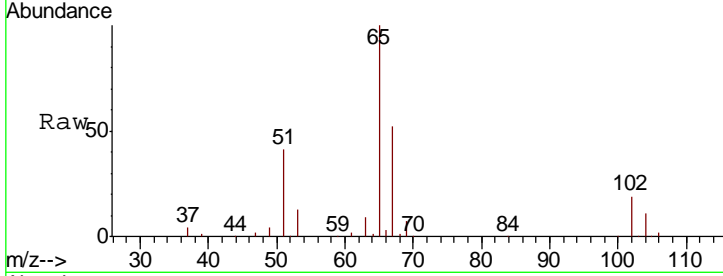




#33
 1,2-Dichloroethane-d4
 Concen: 52.837 ug/l
 RT: 5.31 min Scan# 1287
 Delta R.T. -0.00 min
 Lab File: VU027108.D
 Acq: 24 Sep 2018 14:58

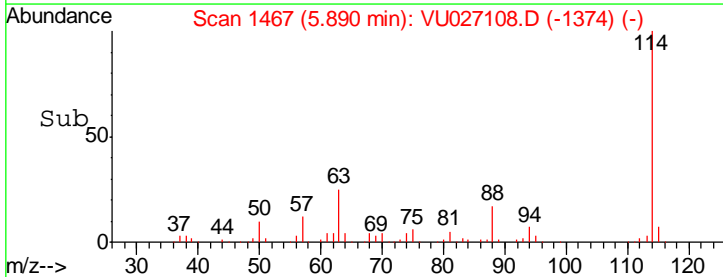
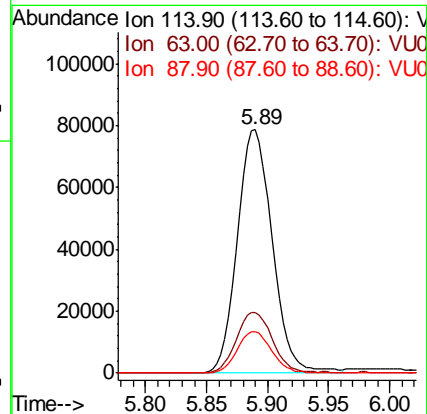
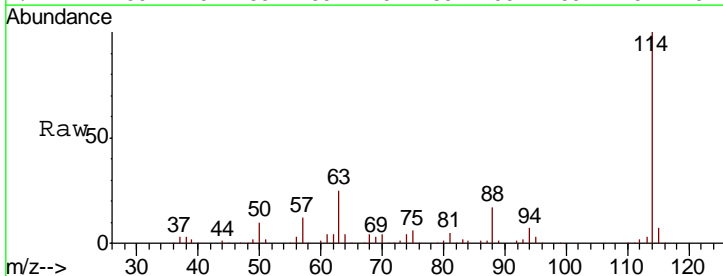
Instrument : MSVOA_U
 ClientSampled : FT-DUP07-20180917

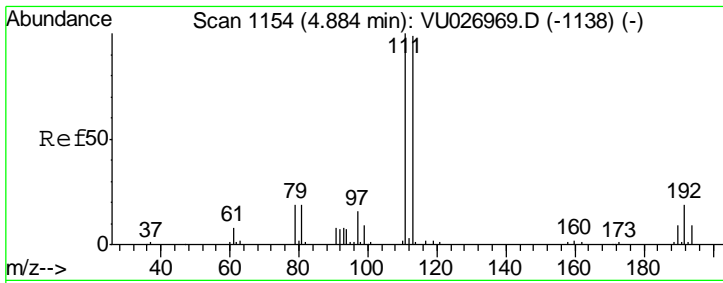
Tgt Ion	Resp	Lower	Upper
65	100		
67	52.6	0.0	105.6



#34
 1,4-Difluorobenzene
 Concen: 50.000 ug/l
 RT: 5.89 min Scan# 1467
 Delta R.T. -0.00 min
 Lab File: VU027108.D
 Acq: 24 Sep 2018 14:58

Tgt Ion	Resp	Lower	Upper
114	100		
63	24.7	0.0	49.2
88	17.2	0.0	33.8

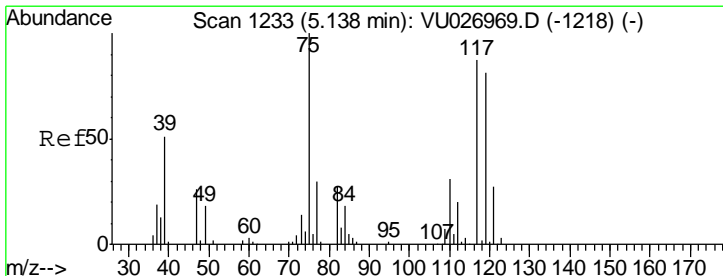
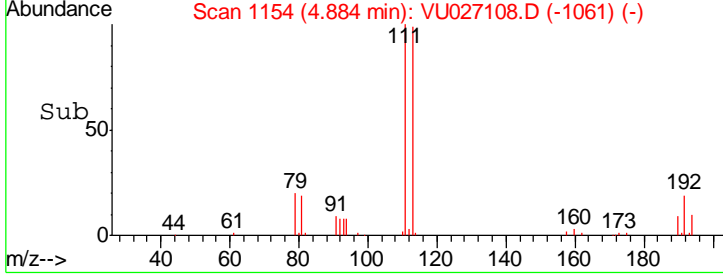
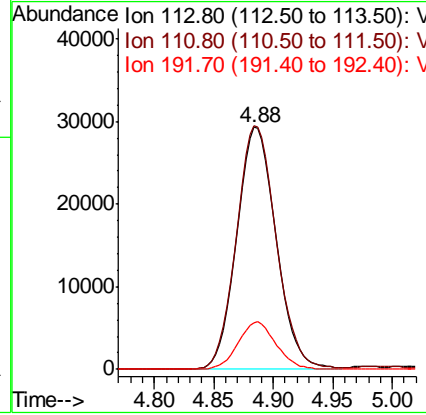
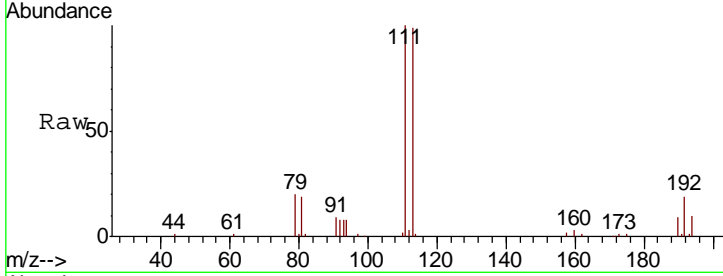




#35
 Dibromofluoromethane
 Concen: 49.508 ug/l
 RT: 4.88 min Scan# 1154
 Delta R.T. -0.00 min
 Lab File: VU027108.D
 Acq: 24 Sep 2018 14:58

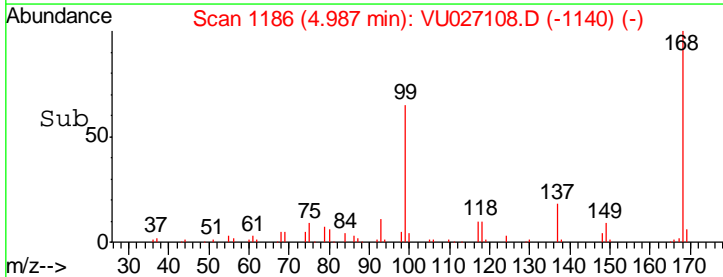
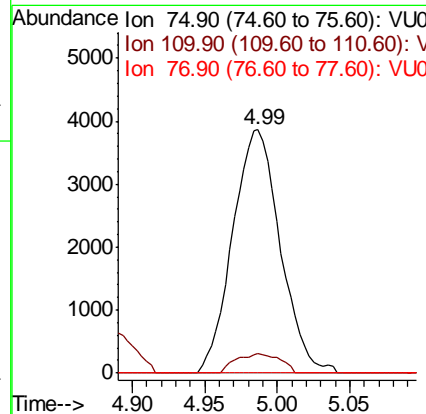
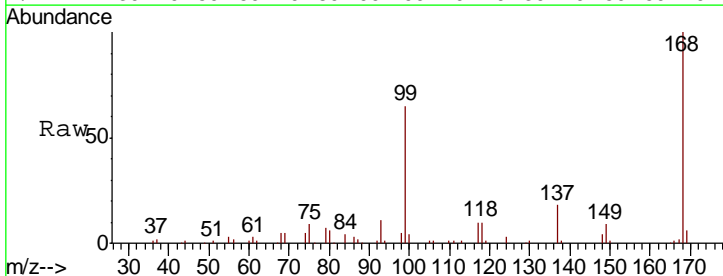
Instrument : MSVOA_U
 ClientSampleId : FT-DUP07-20180917

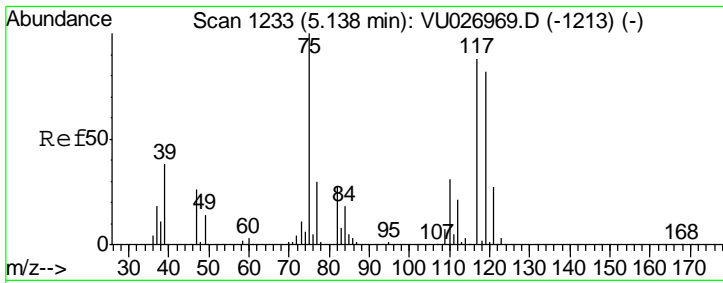
Tgt Ion	Resp	Lower	Upper
113	67229		
111	101.5	82.2	123.4
192	18.8	15.2	22.8



#36
 1,1-Dichloropropene
 Concen: 4.200 ug/l
 RT: 4.99 min Scan# 1186
 Delta R.T. -0.15 min
 Lab File: VU027108.D
 Acq: 24 Sep 2018 14:58

Tgt Ion	Resp	Lower	Upper
75	8781		
110	7.4	16.1	48.2#
77	0.0	24.6	36.8#

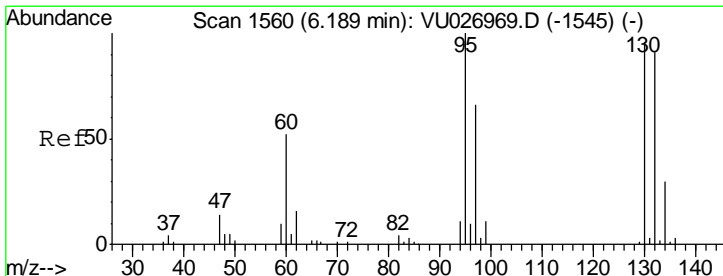
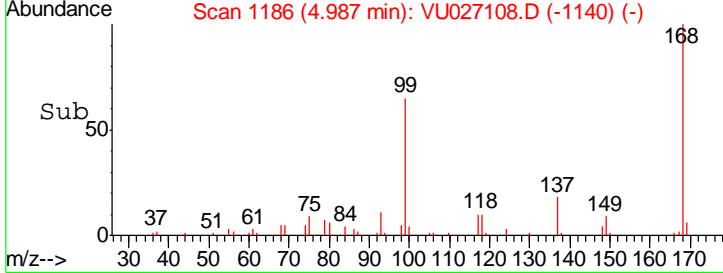
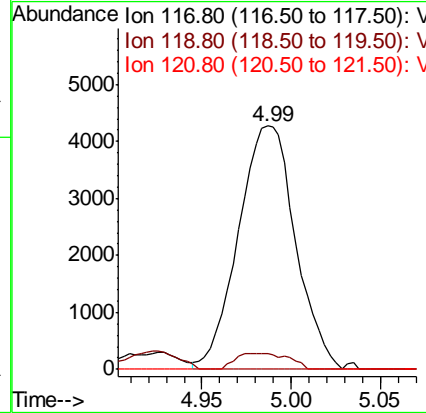
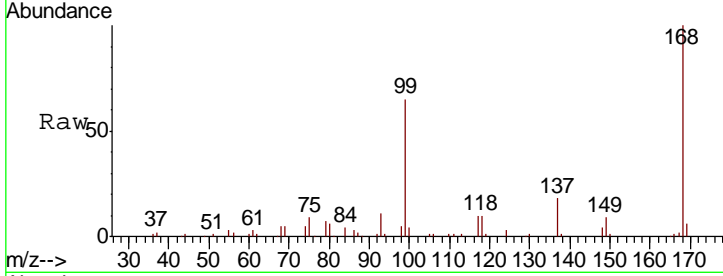




#38
 Carbon Tetrachloride
 Concen: 4.793 ug/l
 RT: 4.99 min Scan# 1186
 Delta R.T. -0.15 min
 Lab File: VU027108.D
 Acq: 24 Sep 2018 14:58

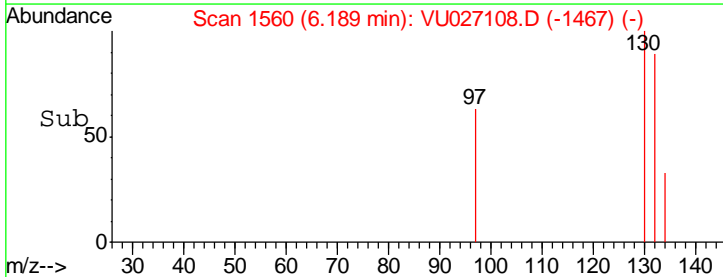
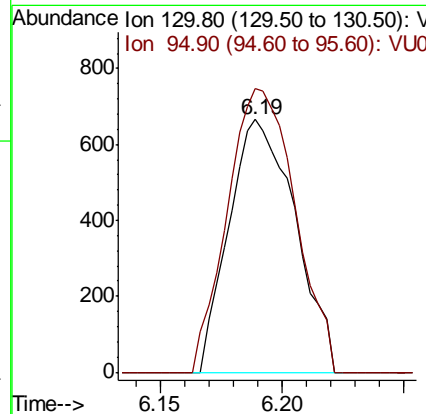
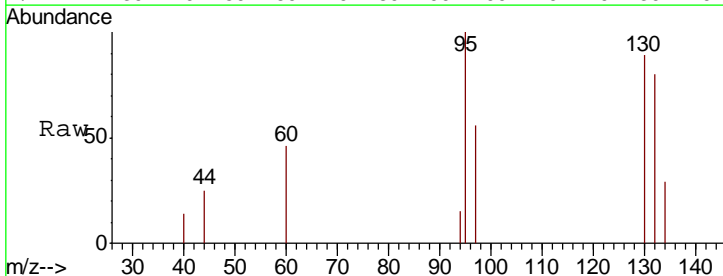
Instrument : MSVOA_U
 ClientSampleId : FT-DUP07-20180917

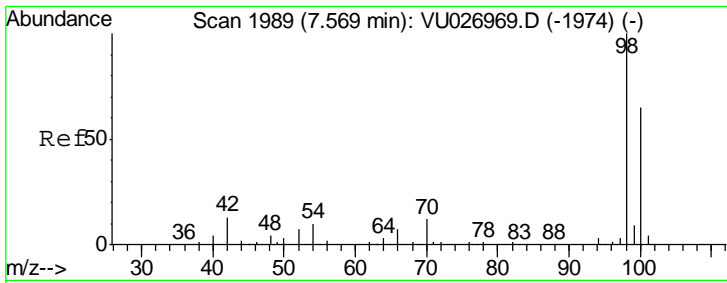
Tgt Ion	Resp	Lower	Upper
117	9537		
117	100		
119	6.6	74.4	111.6#
121	0.0	24.2	36.4#



#44
 Trichloroethene
 Concen: 0.927 ug/l
 RT: 6.19 min Scan# 1560
 Delta R.T. -0.00 min
 Lab File: VU027108.D
 Acq: 24 Sep 2018 14:58

Tgt Ion	Resp	Lower	Upper
130	1255		
130	100		
95	112.2	0.0	208.8

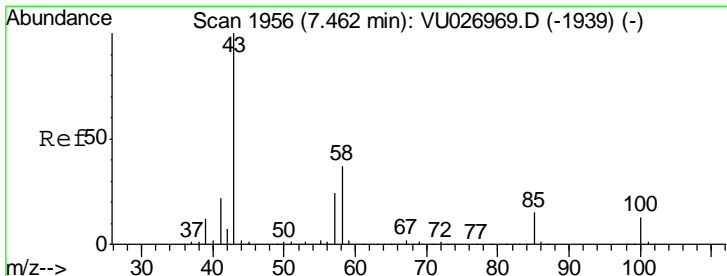
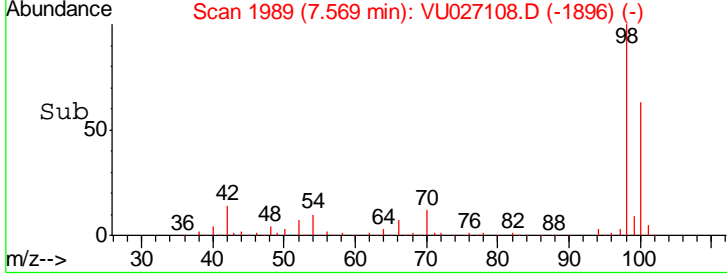
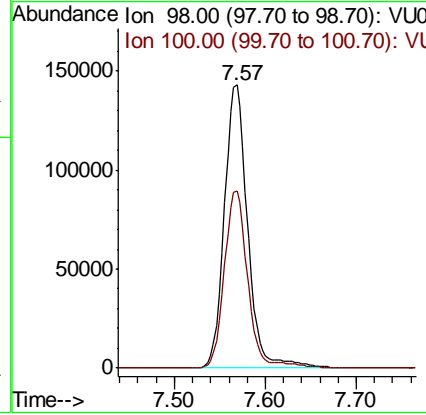
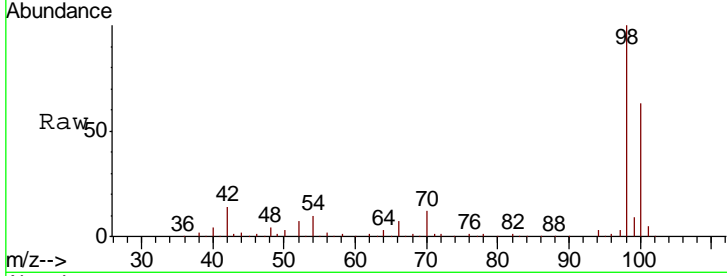




#50
 Toluene-d8
 Concen: 49.358 ug/l
 RT: 7.57 min Scan# 1989
 Delta R.T. -0.00 min
 Lab File: VU027108.D
 Acq: 24 Sep 2018 14:58

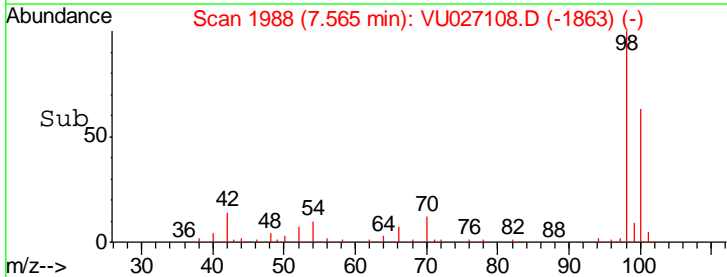
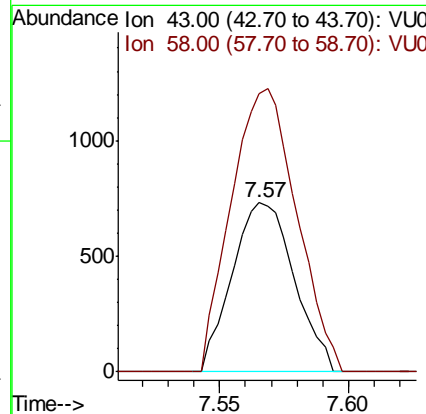
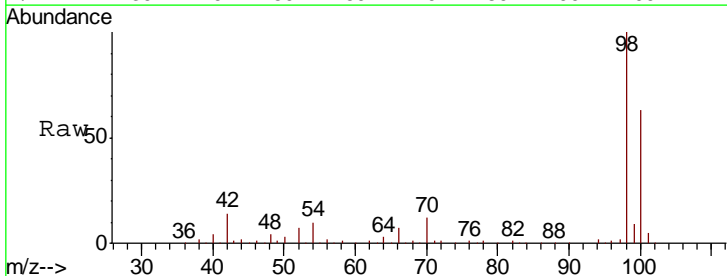
Instrument : MSVOA_U
 ClientSampled : FT-DUP07-20180917

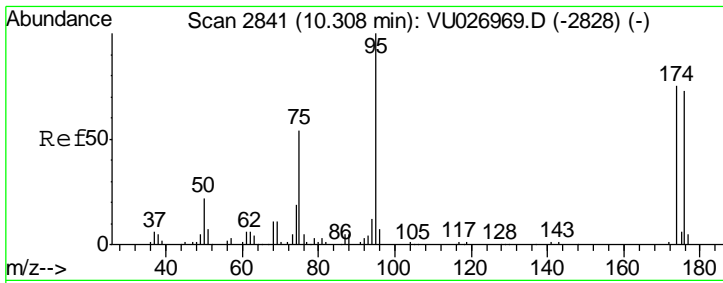
Tgt Ion: 98 Resp: 255439
 Ion Ratio Lower Upper
 98 100
 100 63.1 52.1 78.1



#51
 4-Methyl-2-Pentanone
 Concen: 0.442 ug/l
 RT: 7.57 min Scan# 1988
 Delta R.T. 0.10 min
 Lab File: VU027108.D
 Acq: 24 Sep 2018 14:58

Tgt Ion: 43 Resp: 1227
 Ion Ratio Lower Upper
 43 100
 58 176.4 29.8 44.6#

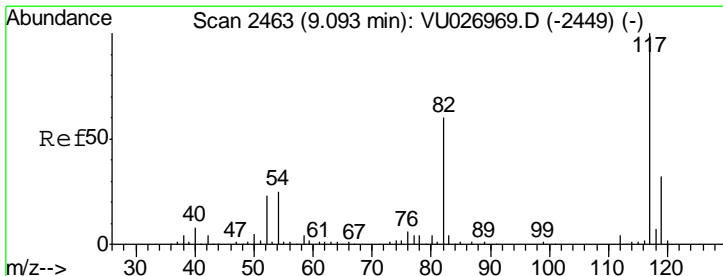
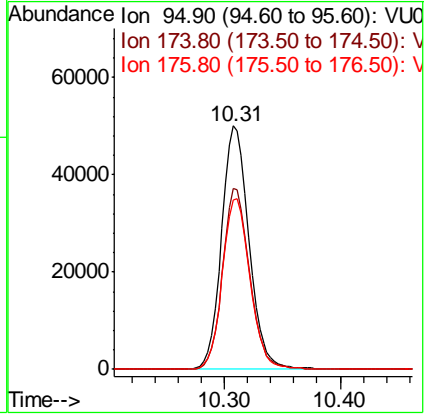
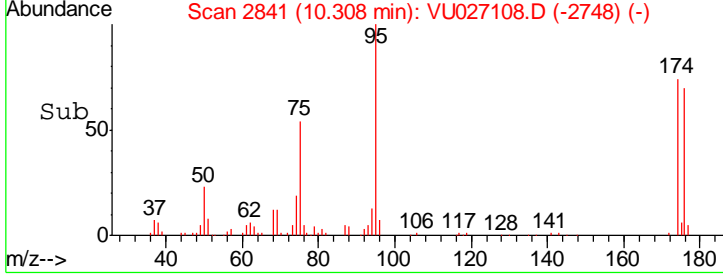
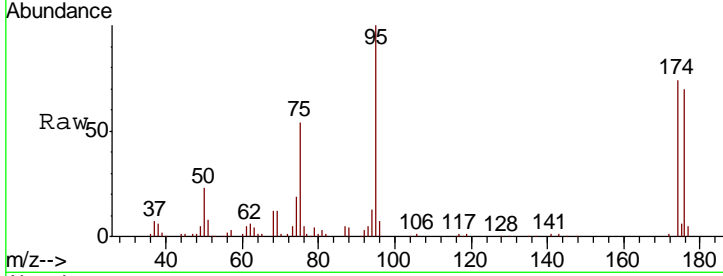




#62
 4-Bromofluorobenzene
 Concen: 46.134 ug/l
 RT: 10.31 min Scan# 2841
 Delta R.T. -0.00 min
 Lab File: VU027108.D
 Acq: 24 Sep 2018 14:58

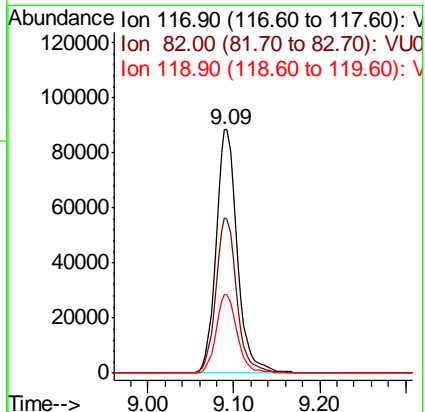
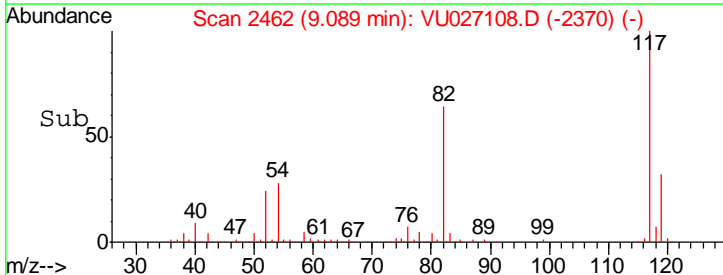
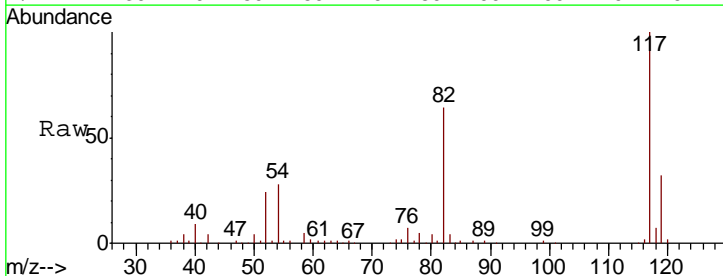
Instrument : MSVOA_U
 ClientSampled : FT-DUP07-20180917

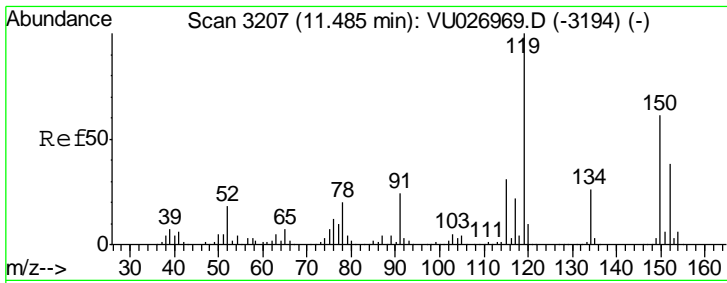
Tgt Ion	Resp	Lower	Upper
95	81924		
174	73.1	0.0	150.2
176	70.7	0.0	145.2



#63
 Chlorobenzene-d5
 Concen: 50.000 ug/l
 RT: 9.09 min Scan# 2462
 Delta R.T. -0.00 min
 Lab File: VU027108.D
 Acq: 24 Sep 2018 14:58

Tgt Ion	Resp	Lower	Upper
117	151621		
82	63.8	48.0	72.0
119	32.4	25.8	38.8

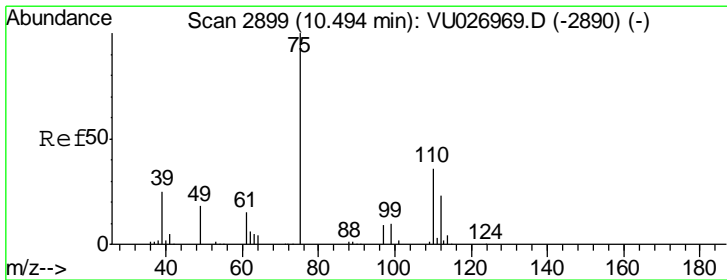
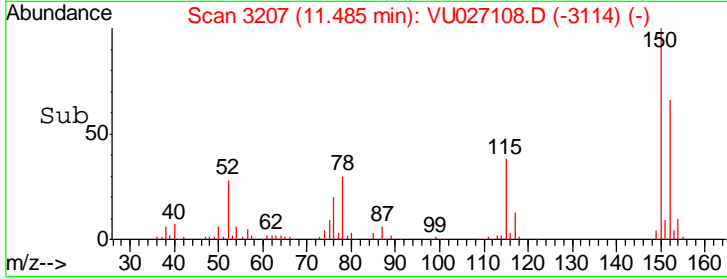
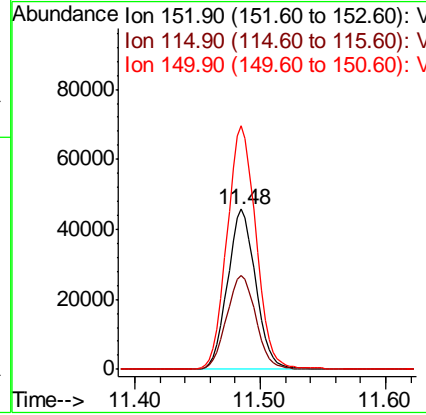
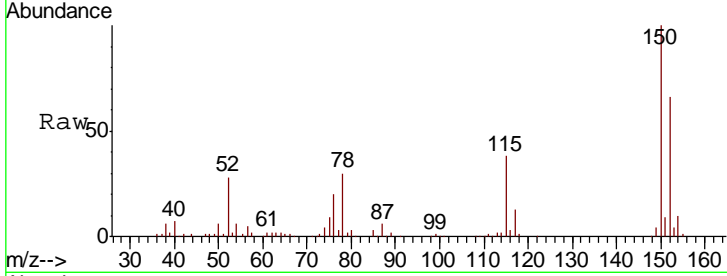




#72
 1,4-Dichlorobenzene-d4
 Concen: 50.000 ug/l
 RT: 11.48 min Scan# 3207
 Delta R.T. -0.00 min
 Lab File: VU027108.D
 Acq: 24 Sep 2018 14:58

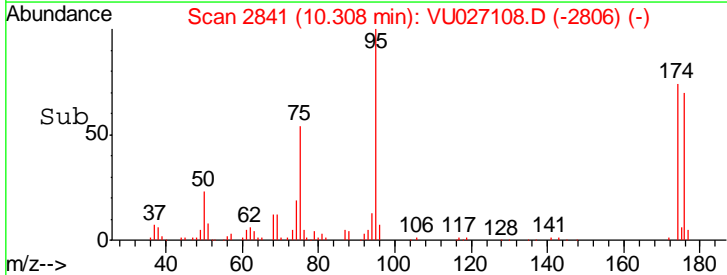
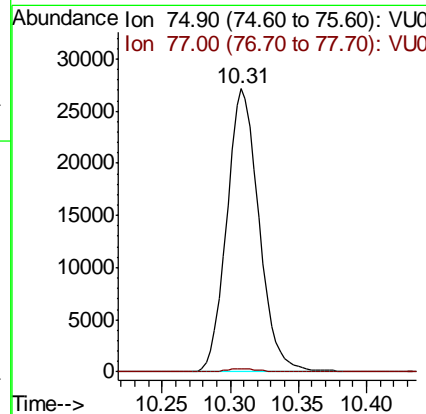
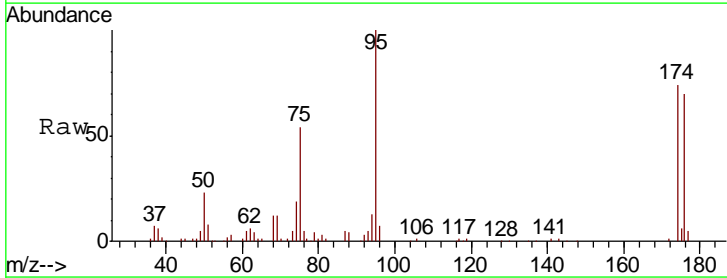
Instrument :
 MSVOA_U
 ClientSampleId :
 FT-DUP07-20180917

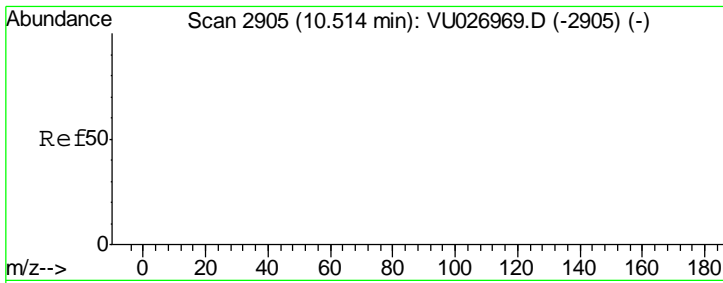
Tgt Ion	Resp	Lower	Upper
152	100		
115	60.7	44.9	134.5
150	156.2	0.0	355.8



#76
 1,2,3-Trichloropropane
 Concen: 20.525 ug/l
 RT: 10.31 min Scan# 2841
 Delta R.T. -0.19 min
 Lab File: VU027108.D
 Acq: 24 Sep 2018 14:58

Tgt Ion	Resp	Lower	Upper
75	100		
77	1.0	20.9	62.8#





#81
 trans-1,4-Dichloro-2-butene
 Concen: 65.684 ug/l
 RT: 10.31 min Scan# 2841
 Delta R.T. -0.21 min
 Lab File: VU027108.D
 Acq: 24 Sep 2018 14:58

Instrument : MSVOA_U
 ClientSampled : FT-DUP07-20180917

Tgt Ion	Resp	Lower	Upper
75	100		
53	0.1	0.0	0.0#
89	0.0	0.0	0.0

