

Data Path : Z:\VOASRV\HPCHEM1\MSVOA U\DATA\VU092418\  
 Data File : VU027116.D  
 Acq On : 24 Sep 2018 18:04  
 Operator : MD/SY  
 Sample : J4973-03  
 Misc : 5.0mL/MSVOA U/WATER  
 ALS Vial : 25 Sample Multiplier: 1

Instrument :  
 MSVOA\_U  
 ClientSampleId :  
 CB-0918-S-TCLP-GRID56-3

Quant Time: Sep 25 09:50:12 2018  
 Quant Method : Z:\VOASRV\HPCHEM1\MSVOA\_U\METHOD\82U092218W.M  
 Quant Title : SW846 8260  
 QLast Update : Sat Sep 22 01:31:57 2018  
 Response via : Initial Calibration

Internal Standards	R.T.	QIon	Response	Conc	Units	Dev(Min)
1) Pentafluorobenzene	4.98	168	92762	50.00	ug/l	0.00
34) 1,4-Difluorobenzene	5.89	114	162007	50.00	ug/l	0.00
63) Chlorobenzene-d5	9.09	117	156438	50.00	ug/l	0.00
72) 1,4-Dichlorobenzene-d4	11.48	152	74324	50.00	ug/l	0.00

## System Monitoring Compounds

33) 1,2-Dichloroethane-d4	5.31	65	97489	52.22	ug/l	0.00
Spiked Amount				50.000		
			Recovery	=	104.44%	
35) Dibromofluoromethane	4.88	113	67208	47.86	ug/l	0.00
Spiked Amount				50.000		
			Recovery	=	95.72%	
50) Toluene-d8	7.57	98	260553	48.69	ug/l	0.00
Spiked Amount				50.000		
			Recovery	=	97.38%	
62) 4-Bromofluorobenzene	10.31	95	85898	46.78	ug/l	0.00
Spiked Amount				50.000		
			Recovery	=	93.56%	

## Target Compounds

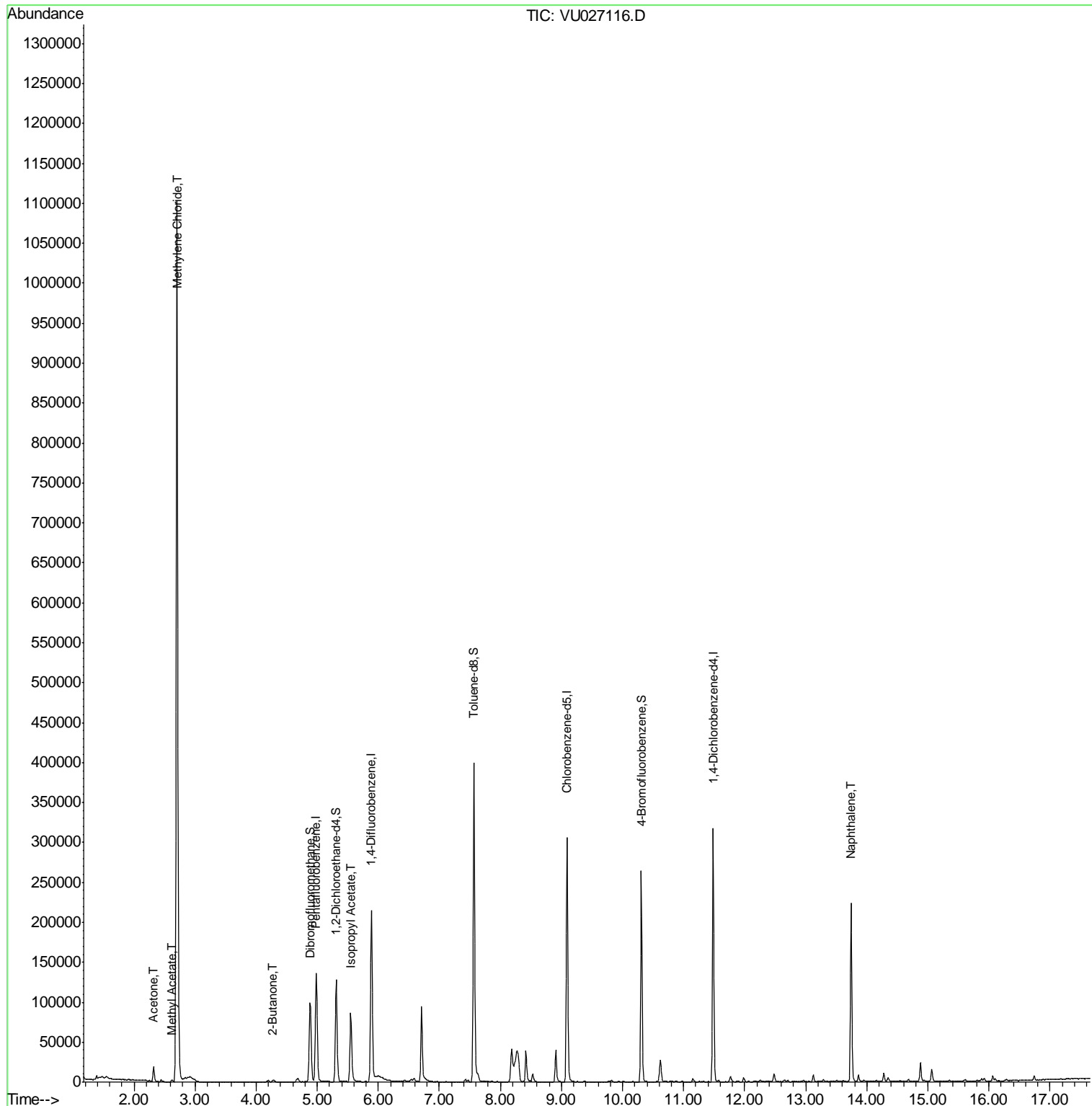
					Qvalue	
16) Acetone	2.32	43	19656	3.459	ug/l	97
18) Methyl Acetate	2.62	43	3199	1.204	ug/l #	89
20) Methylene Chloride	2.70	84	452956	270.902	ug/l	96
25) 2-Butanone	4.27	43	4924	3.138	ug/l #	84
43) Isopropyl Acetate	5.55	43	101025	23.667	ug/l	97
95) Naphthalene	13.74	128	162721	27.240	ug/l	100

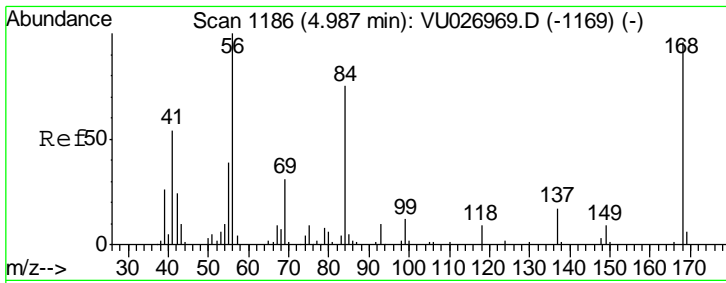
(#) = qualifier out of range (m) = manual integration (+) = signals summed

Data Path : Z:\VOASRV\HPCHEM1\MSVOA U\DATA\VU092418\  
 Data File : VU027116.D  
 Acq On : 24 Sep 2018 18:04  
 Operator : MD/SY  
 Sample : J4973-03  
 Misc : 5.0mL/MSVOA U/WATER  
 ALS Vial : 25 Sample Multiplier: 1

Instrument :  
 MSVOA\_U  
 ClientSampleId :  
 CB-0918-S-TCLP-GRID56-3

Quant Time: Sep 25 09:50:12 2018  
 Quant Method : Z:\VOASRV\HPCHEM1\MSVOA\_U\METHOD\82U092218W.M  
 Quant Title : SW846 8260  
 QLast Update : Sat Sep 22 01:31:57 2018  
 Response via : Initial Calibration

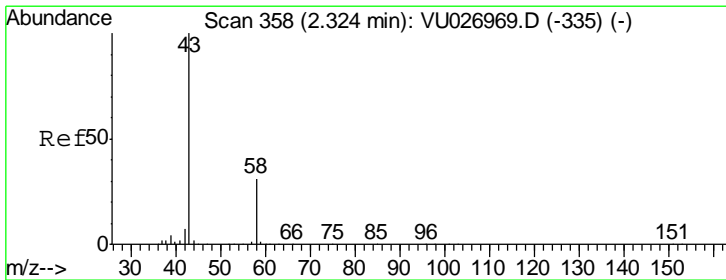
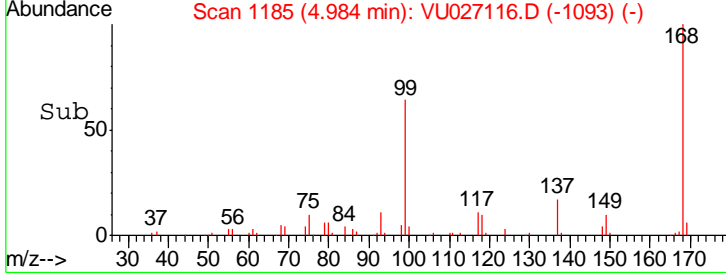
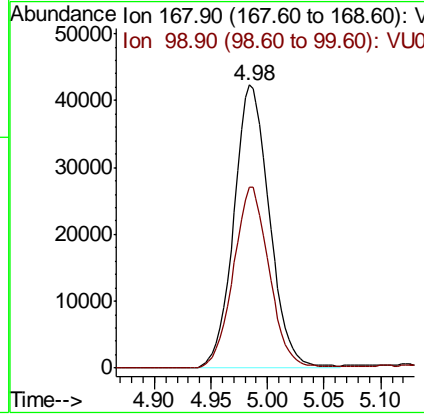
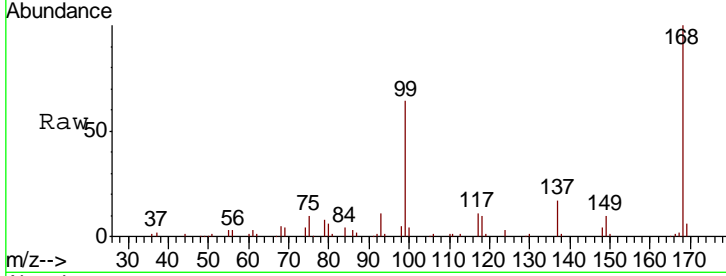




#1  
 Pentafluorobenzene  
 Concen: 50.000 ug/l  
 RT: 4.98 min Scan# 1185  
 Delta R.T. -0.00 min  
 Lab File: VU027116.D  
 Acq: 24 Sep 2018 18:04

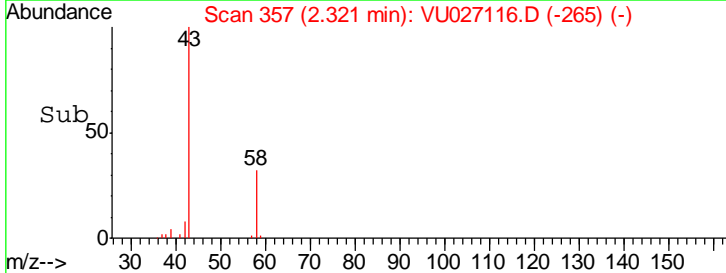
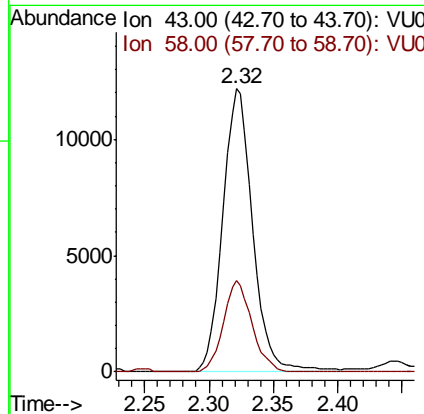
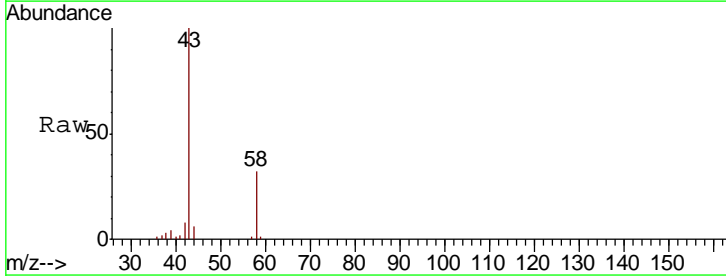
Instrument : MSVOA\_U  
 ClientSampleId : CB-0918-S-TCLP-GRID56-3

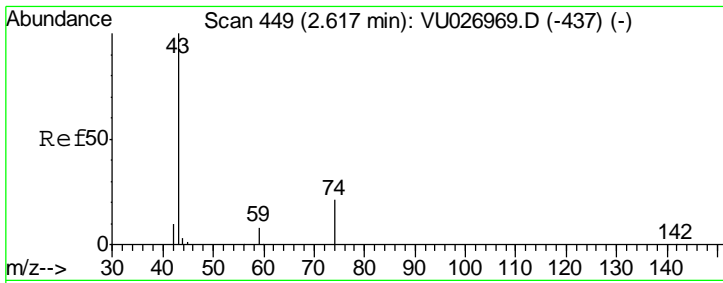
Tgt Ion: 168 Resp: 92762  
 Ion Ratio Lower Upper  
 168 100  
 99 63.9 48.1 72.1



#16  
 Acetone  
 Concen: 3.459 ug/l  
 RT: 2.32 min Scan# 357  
 Delta R.T. -0.00 min  
 Lab File: VU027116.D  
 Acq: 24 Sep 2018 18:04

Tgt Ion: 43 Resp: 19656  
 Ion Ratio Lower Upper  
 43 100  
 58 32.3 24.6 36.8

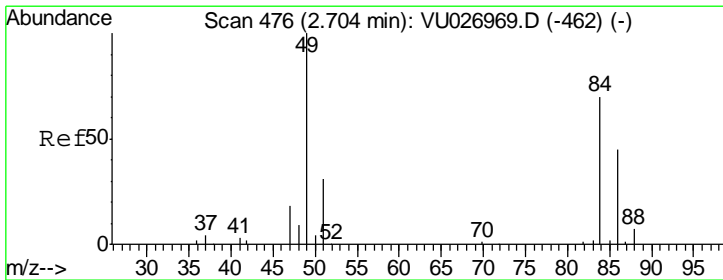
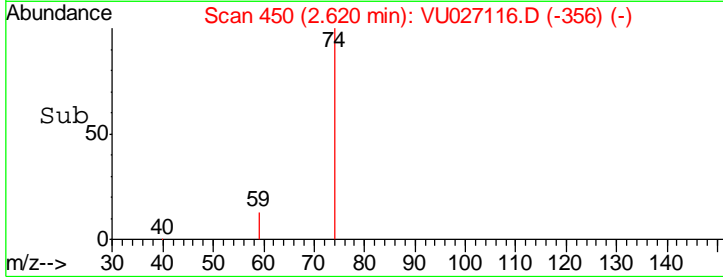
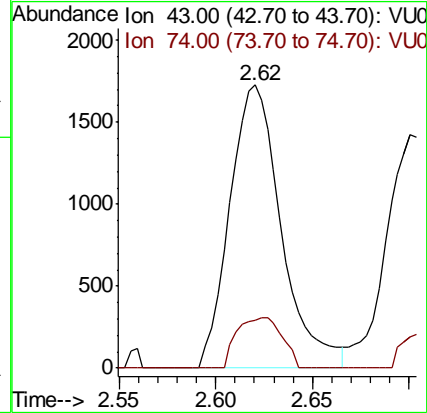
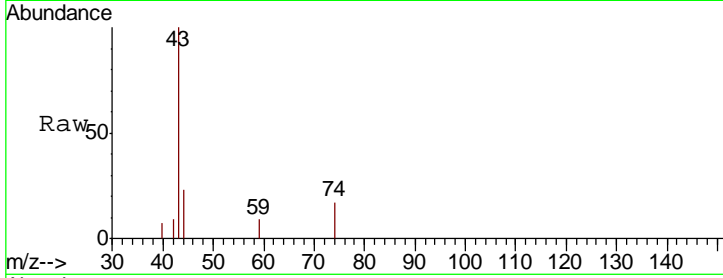




#18  
 Methyl Acetate  
 Concen: 1.204 ug/l  
 RT: 2.62 min Scan# 450  
 Delta R.T. 0.00 min  
 Lab File: VU027116.D  
 Acq: 24 Sep 2018 18:04

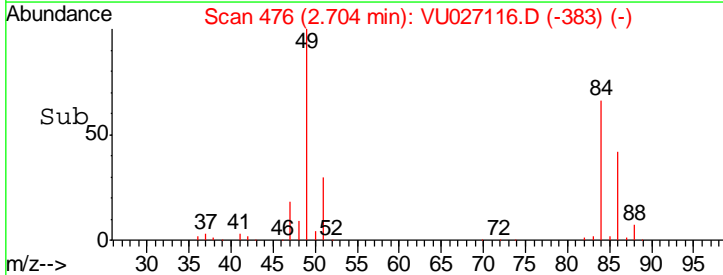
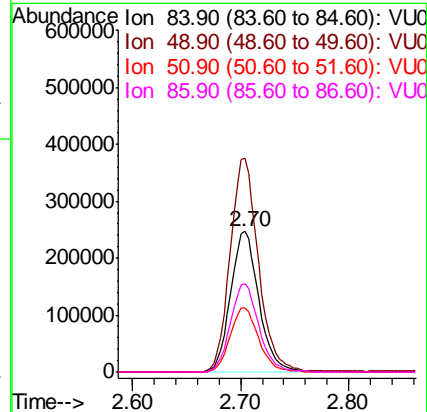
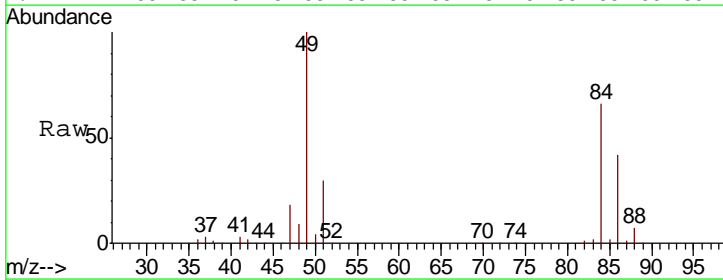
Instrument : MSVOA\_U  
 ClientSampleId : CB-0918-S-TCLP-GRID56-3

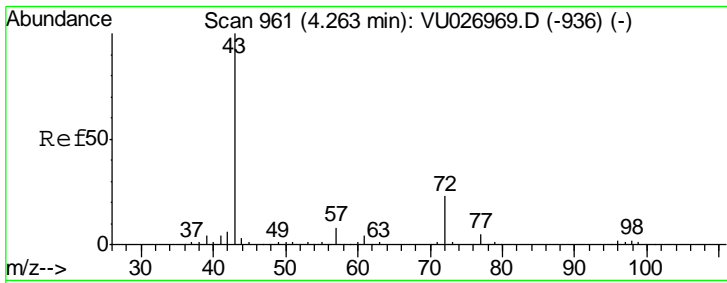
Tgt Ion	Resp	Lower	Upper
43	3199		
74	15.6	16.6	25.0#



#20  
 Methylene Chloride  
 Concen: 270.902 ug/l  
 RT: 2.70 min Scan# 476  
 Delta R.T. 0.00 min  
 Lab File: VU027116.D  
 Acq: 24 Sep 2018 18:04

Tgt Ion	Resp	Lower	Upper
84	452956		
49	151.7	114.9	172.3
51	45.4	35.8	53.8
86	63.1	51.3	76.9

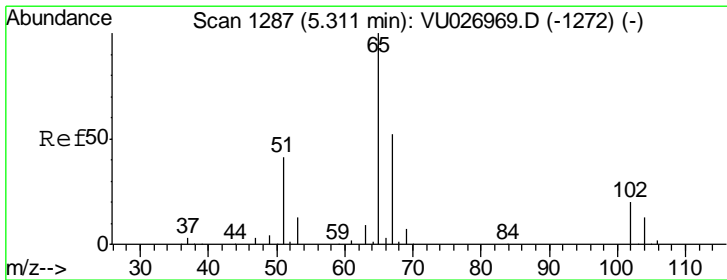
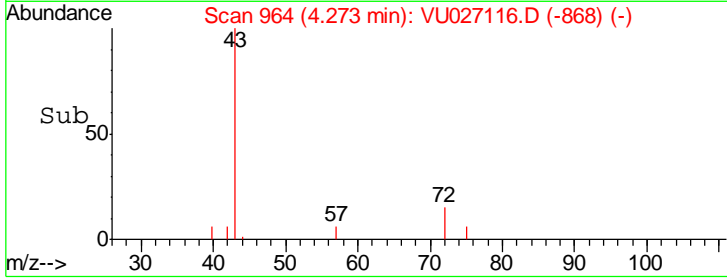
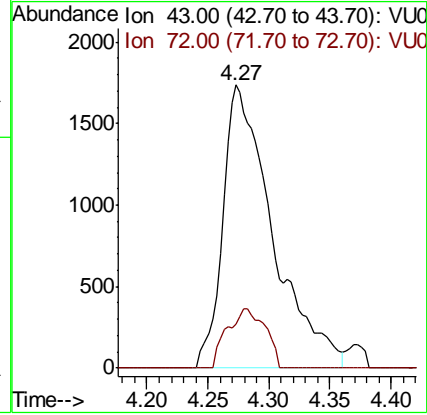
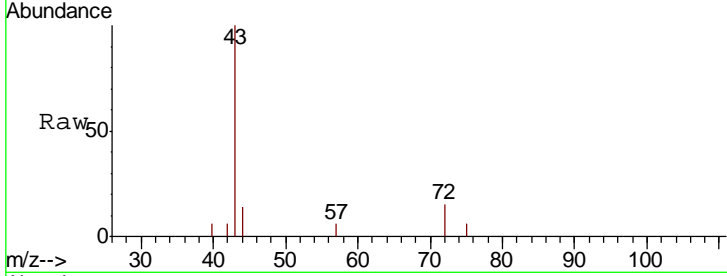




#25  
 2-Butanone  
 Concen: 3.138 ug/l  
 RT: 4.27 min Scan# 964  
 Delta R.T. 0.01 min  
 Lab File: VU027116.D  
 Acq: 24 Sep 2018 18:04

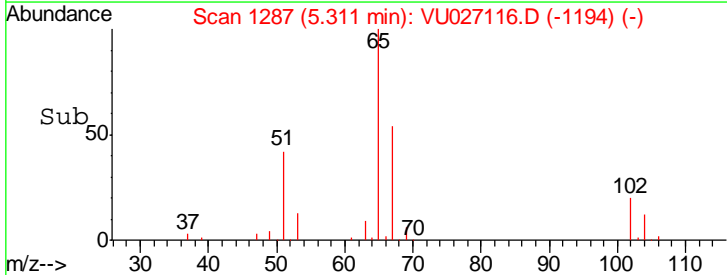
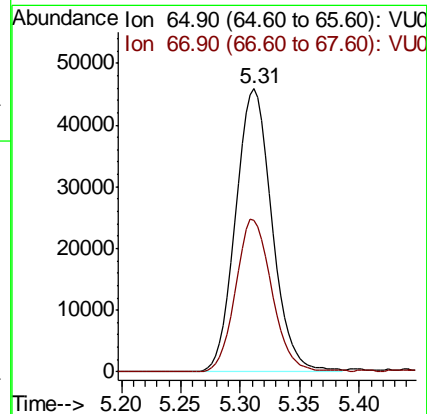
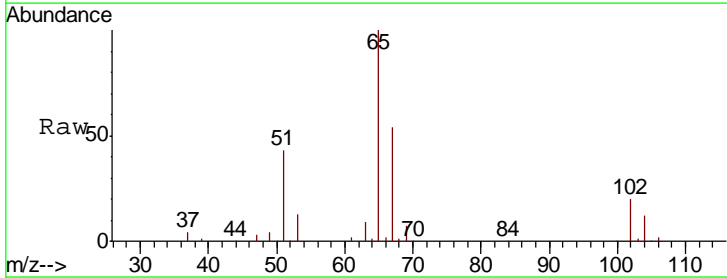
**Instrument :**  
 MSVOA\_U  
**ClientSampled :**  
 CB-0918-S-TCLP-GRID56-3

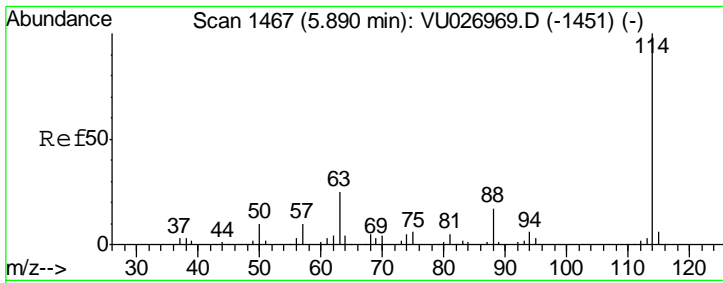
Tgt Ion: 43 Resp: 4924  
 Ion Ratio Lower Upper  
 43 100  
 72 15.4 18.4 27.6#



#33  
 1,2-Dichloroethane-d4  
 Concen: 52.217 ug/l  
 RT: 5.31 min Scan# 1287  
 Delta R.T. 0.00 min  
 Lab File: VU027116.D  
 Acq: 24 Sep 2018 18:04

Tgt Ion: 65 Resp: 97489  
 Ion Ratio Lower Upper  
 65 100  
 67 53.4 0.0 105.6

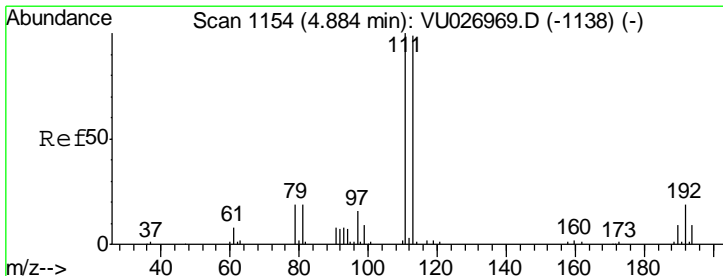
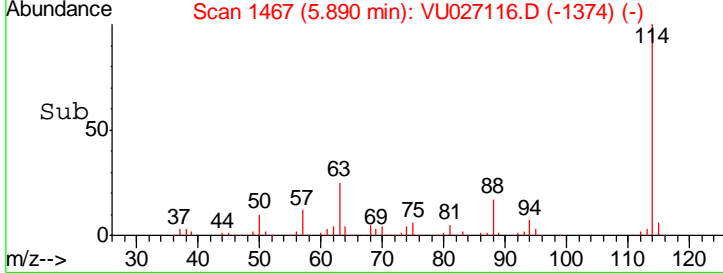
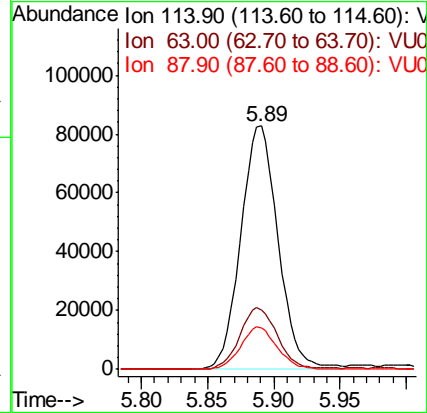
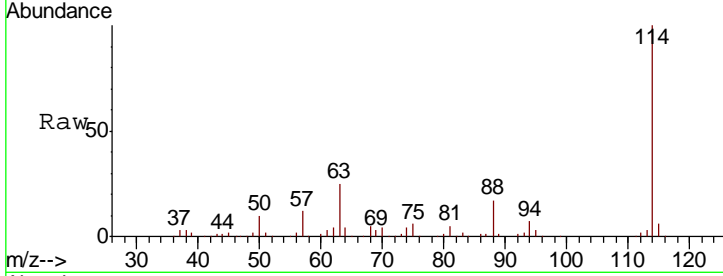




#34  
 1,4-Difluorobenzene  
 Concen: 50.000 ug/l  
 RT: 5.89 min Scan# 1467  
 Delta R.T. 0.00 min  
 Lab File: VU027116.D  
 Acq: 24 Sep 2018 18:04

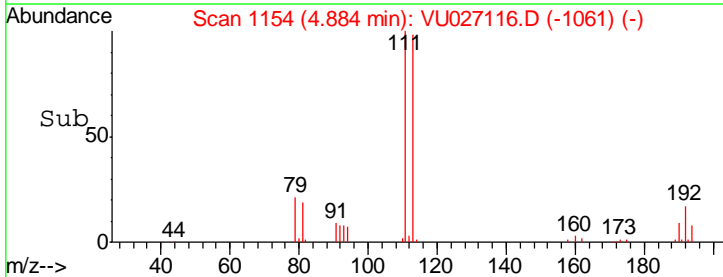
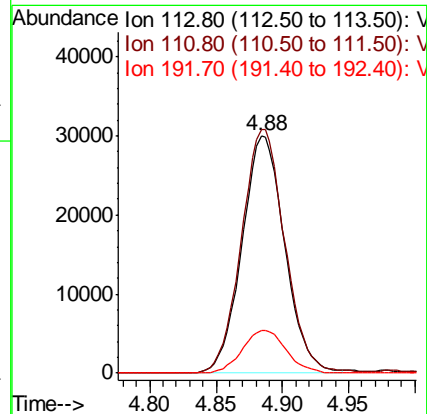
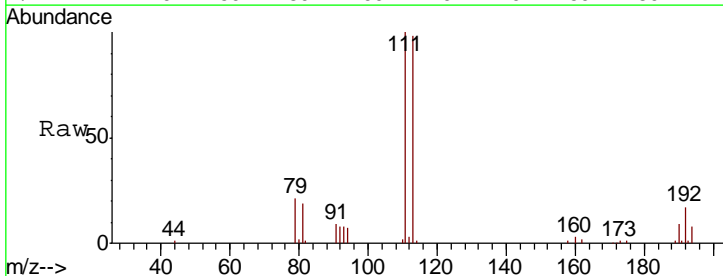
Instrument : MSVOA\_U  
 ClientSampled : CB-0918-S-TCLP-GRID56-3

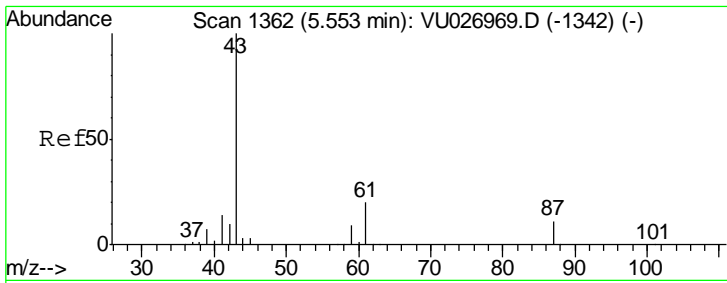
Tgt Ion	Resp	Lower	Upper
114	162007		
63	24.6	0.0	49.2
88	17.2	0.0	33.8



#35  
 Dibromofluoromethane  
 Concen: 47.859 ug/l  
 RT: 4.88 min Scan# 1154  
 Delta R.T. 0.00 min  
 Lab File: VU027116.D  
 Acq: 24 Sep 2018 18:04

Tgt Ion	Resp	Lower	Upper
113	67208		
111	104.8	82.2	123.4
192	18.3	15.2	22.8

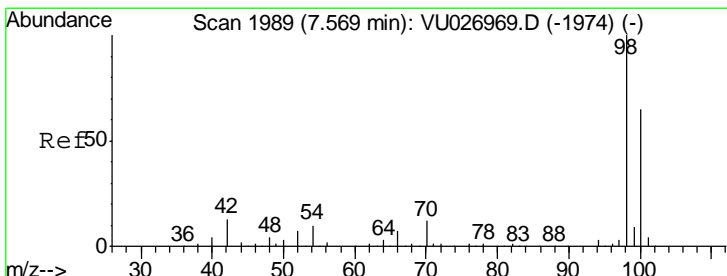
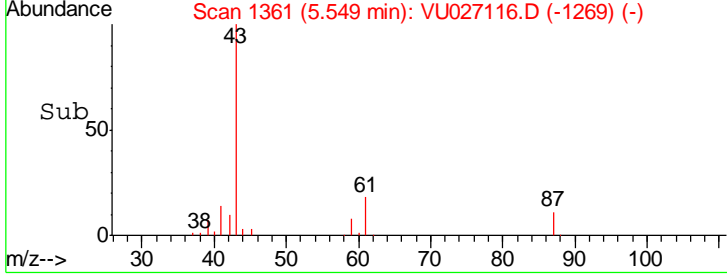
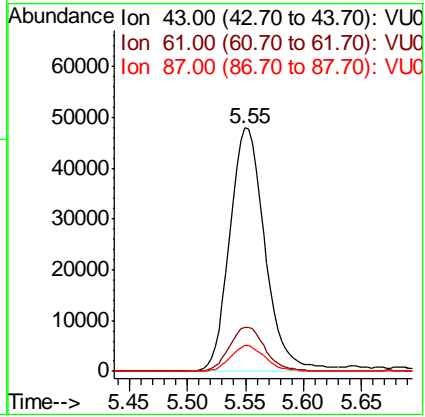
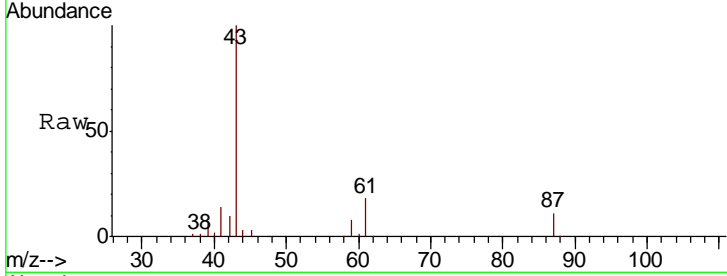




#43  
 Isopropyl Acetate  
 Concen: 23.667 ug/l  
 RT: 5.55 min Scan# 1361  
 Delta R.T. -0.00 min  
 Lab File: VU027116.D  
 Acq: 24 Sep 2018 18:04

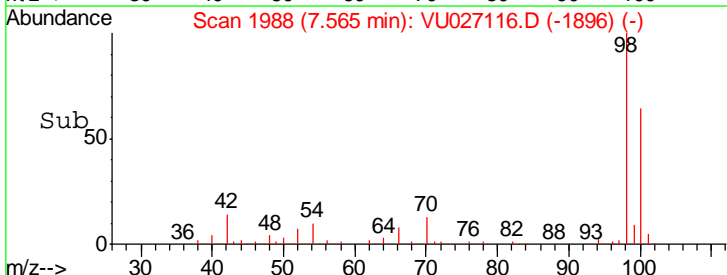
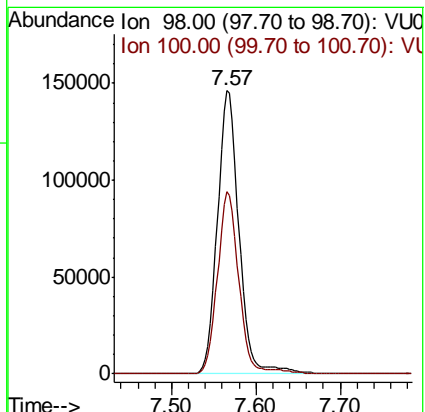
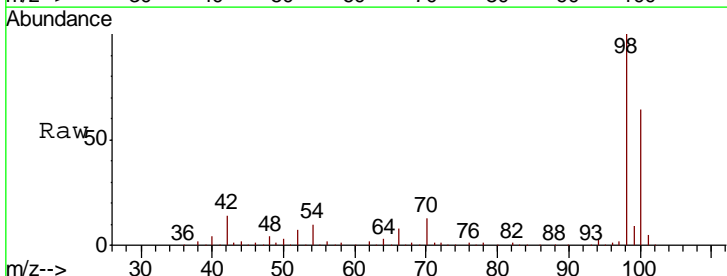
**Instrument :**  
 MSVOA\_U  
**ClientSampled :**  
 CB-0918-S-TCLP-GRID56-3

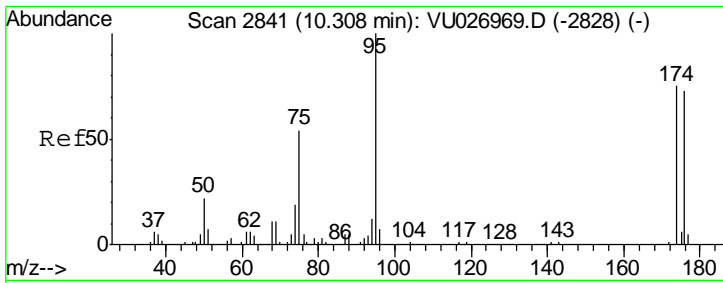
Tgt Ion	Resp	Lower	Upper
43	101025		
61	18.2	15.7	23.5
87	10.4	9.0	13.4



#50  
 Toluene-d8  
 Concen: 48.685 ug/l  
 RT: 7.57 min Scan# 1988  
 Delta R.T. -0.00 min  
 Lab File: VU027116.D  
 Acq: 24 Sep 2018 18:04

Tgt Ion	Resp	Lower	Upper
98	260553		
100	64.2	52.1	78.1

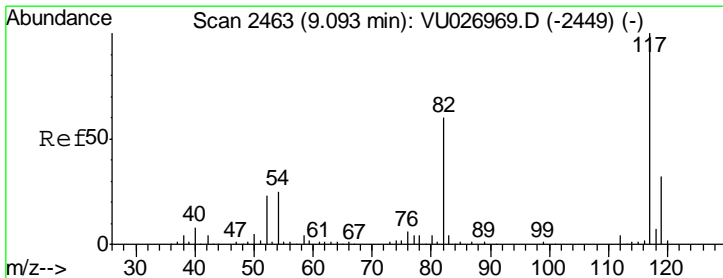
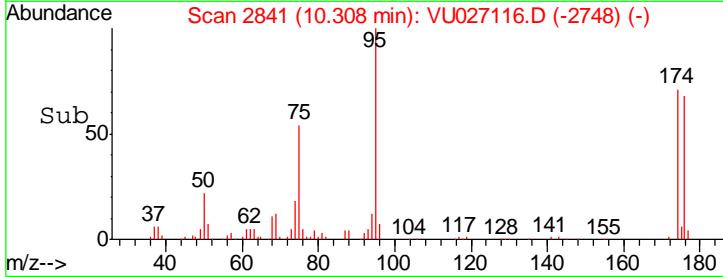
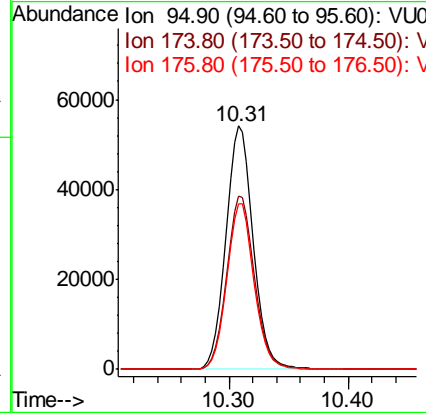
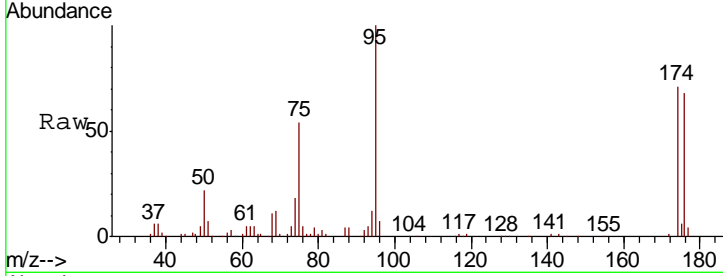




#62  
 4-Bromofluorobenzene  
 Concen: 46.776 ug/l  
 RT: 10.31 min Scan# 2841  
 Delta R.T. 0.00 min  
 Lab File: VU027116.D  
 Acq: 24 Sep 2018 18:04

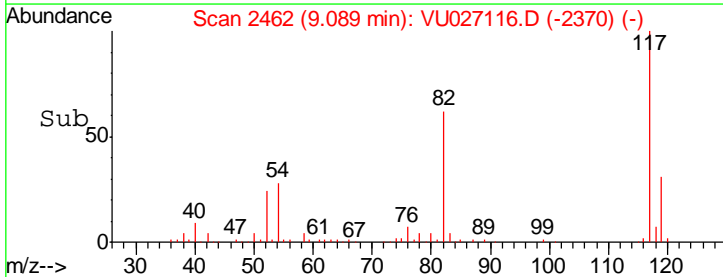
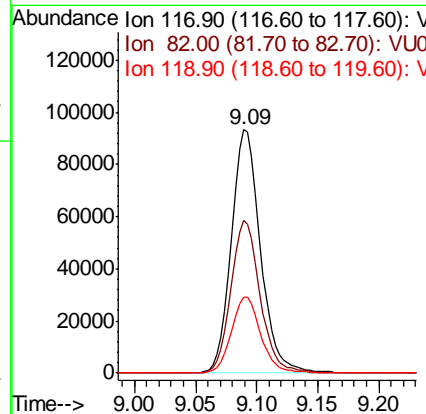
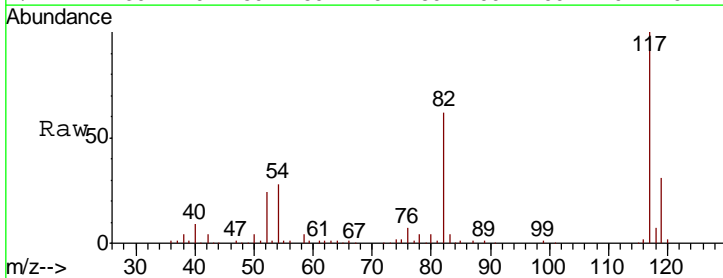
Instrument : MSVOA\_U  
 ClientSampled : CB-0918-S-TCLP-GRID56-3

Tgt Ion	Resp	Lower	Upper
95	85898		
174	72.6	0.0	150.2
176	68.1	0.0	145.2

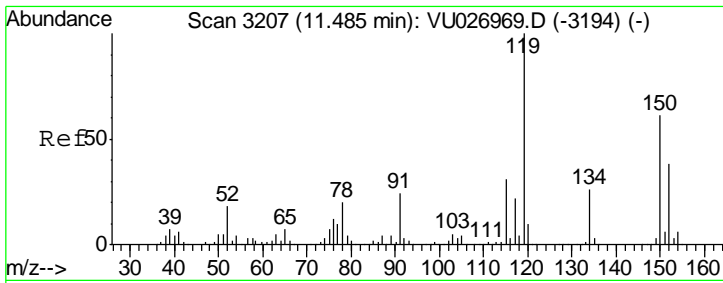


#63  
 Chlorobenzene-d5  
 Concen: 50.000 ug/l  
 RT: 9.09 min Scan# 2462  
 Delta R.T. -0.00 min  
 Lab File: VU027116.D  
 Acq: 24 Sep 2018 18:04

Tgt Ion	Resp	Lower	Upper
117	156438		
82	62.5	48.0	72.0
119	31.2	25.8	38.8



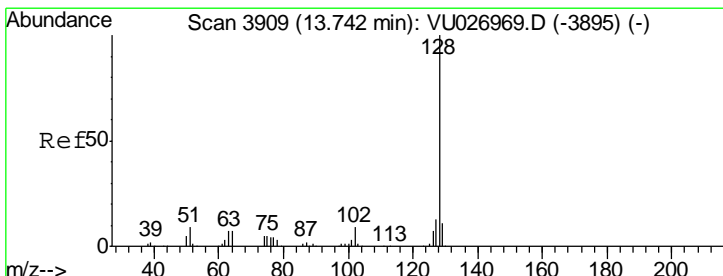
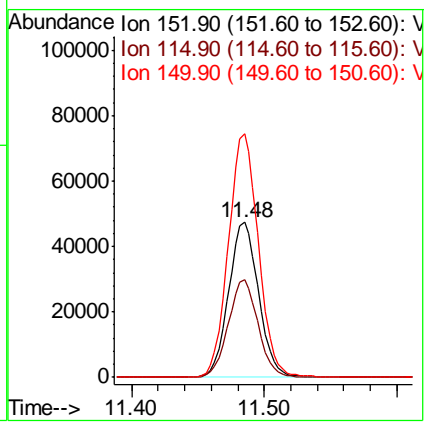
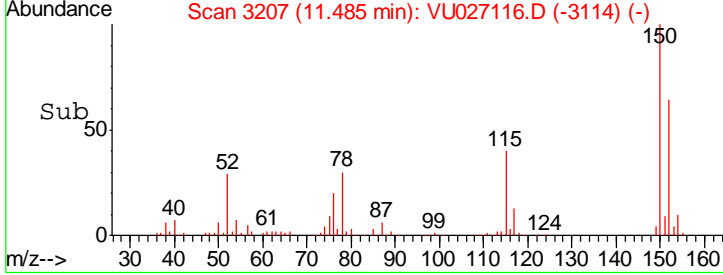
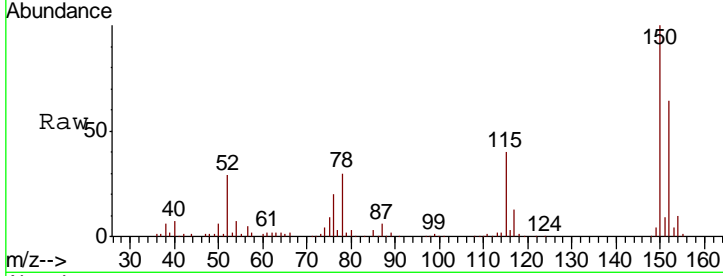




#72  
 1,4-Dichlorobenzene-d4  
 Concen: 50.000 ug/l  
 RT: 11.48 min Scan# 3207  
 Delta R.T. 0.00 min  
 Lab File: VU027116.D  
 Acq: 24 Sep 2018 18:04

Instrument : MSVOA\_U  
 ClientSampled : CB-0918-S-TCLP-GRID56-3

Tgt Ion	Resp	Lower	Upper
152	100		
115	62.4	44.9	134.5
150	157.3	0.0	355.8



#95  
 Naphthalene  
 Concen: 27.240 ug/l  
 RT: 13.74 min Scan# 3909  
 Delta R.T. 0.00 min  
 Lab File: VU027116.D  
 Acq: 24 Sep 2018 18:04

Tgt Ion	Resp	Lower	Upper
128	100		
127	13.0	10.6	15.8
129	10.8	8.6	12.8

