

Data Path : Z:\VOASRV\HPCHEM1\MSVOA U\DATA\VU092420\
 Data File : VU040262.D
 Acq On : 24 Sep 2020 10:18
 Operator : SY/MD
 Sample : VSTD05033
 Misc : 5.0mL/MSVOA U/WATER
 ALS Vial : 4 Sample Multiplier: 1

Instrument :
 MSVOA_U
 ClientSampleId :
 VSTD050203

Quant Time: Sep 25 09:18:24 2020
 Quant Method : Z:\VOASRV\HPCHEM1\MSVOA_U\METHOD\SFAMULM092420WMA.M
 Quant Title : VOC Analysis
 QLast Update : Fri Sep 25 09:11:02 2020
 Response via : Initial Calibration

Internal Standards	R.T.	QIon	Response	Conc	Units	Dev(Min)
1) 1,4-Difluorobenzene	6.26	114	422142	50.00	ug/L	0.00
28) Chlorobenzene-d5	9.42	117	404779	50.00	ug/L	0.00
58) 1,4-Dichlorobenzene-d4	11.81	152	208902	50.00	ug/L	0.00

System Monitoring Compounds

4) Vinyl Chloride-d3	1.60	65	167242	57.31	ug/L	0.00
7) Chloroethane-d5	1.92	69	128101	49.26	ug/L	0.00
11) 1,1-Dichloroethene-d2	2.58	63	335732	60.06	ug/L	0.00
21) 2-Butanone-d5	4.64	46	304953	117.80	ug/L	0.00
24) Chloroform-d	5.08	84	306960	57.75	ug/L	0.00
26) 1,2-Dichloroethane-d4	5.72	65	213262	58.63	ug/L	0.00
32) Benzene-d6	5.74	84	578916	53.53	ug/L	0.00
36) 1,2-Dichloropropane-d6	6.70	67	193503	53.85	ug/L	0.00
41) Toluene-d8	7.91	98	536950	54.01	ug/L	0.00
43) trans-1,3-Dichloropropene-	8.19	79	98572	56.53	ug/L	0.00
47) 2-Hexanone-d5	8.64	63	181851	92.72	ug/L	0.00
56) 1,1,2,2-Tetrachloroethane-	10.75	84	273329	52.10	ug/L	0.00
66) 1,2-Dichlorobenzene-d4	12.19	152	195375	51.06	ug/L	0.00

Target Compounds

Target Compounds	R.T.	QIon	Response	Conc	Units	Qvalue
2) Dichlorodifluoromethane	1.39	85	151281	51.475	ug/L	100
3) Chloromethane	1.52	50	183035	52.251	ug/L	100
5) Vinyl chloride	1.61	62	183375	49.506	ug/L	100
6) Bromomethane	1.86	94	83191	37.614	ug/L	100
8) Chloroethane	1.94	64	115844	49.219	ug/L	100
9) Trichlorofluoromethane	2.15	101	252238	55.525	ug/L	100
10) 1,1,2-Trichloro-1,2,2-trif	2.59	101	160377	58.081	ug/L	100
12) 1,1-Dichloroethene	2.59	96	150398	56.760	ug/L	100
13) Acetone	2.64	43	332880	122.454	ug/L	100
14) Carbon disulfide	2.81	76	478869	59.312	ug/L	100
15) Methyl Acetate	2.96	43	245552	62.962	ug/L	100
16) Methylene chloride	3.06	84	177298	54.402	ug/L	100
17) trans-1,2-Dichloroethene	3.37	96	159004	56.215	ug/L	100
18) Methyl tert-butyl Ether	3.38	73	529175	54.418	ug/L	100
19) 1,1-Dichloroethane	3.89	63	331287	58.222	ug/L	100
20) cis-1,2-Dichloroethene	4.69	96	174851	54.836	ug/L	100
22) 2-Butanone	4.72	43	407452	126.229	ug/L	100
23) Bromochloromethane	4.99	128	89683	58.672	ug/L	100
25) Chloroform	5.11	83	336554	60.500	ug/L	100
27) 1,2-Dichloroethane	5.81	62	274501	58.820	ug/L	100
29) Cyclohexane	5.40	56	303172	56.419	ug/L	100
30) 1,1,1-Trichloroethane	5.33	97	279566	61.488	ug/L	100
31) Carbon tetrachloride	5.54	117	237783	63.786	ug/L	100
33) Benzene	5.79	78	707185	56.160	ug/L	100
34) Trichloroethene	6.56	95	178032	56.786	ug/L	100
35) Methylcyclohexane	6.77	83	281857	52.155	ug/L	100
37) 1,2-Dichloropropane	6.80	63	195135	57.133	ug/L	100
38) Bromodichloromethane	7.11	83	248350	59.187	ug/L	100
39) cis-1,3-Dichloropropene	7.62	75	291840	54.257	ug/L	100
40) 4-Methyl-2-pentanone	7.80	43	664058	121.441	ug/L	100

Data Path : Z:\VOASRV\HPCHEM1\MSVOA U\DATA\VU092420\
 Data File : VU040262.D
 Acq On : 24 Sep 2020 10:18
 Operator : SY/MD
 Sample : VSTD05033
 Misc : 5.0mL/MSVOA U/WATER
 ALS Vial : 4 Sample Multiplier: 1

Instrument :
 MSVOA_U
 ClientSampleId :
 VSTD050203

Quant Time: Sep 25 09:18:24 2020
 Quant Method : Z:\VOASRV\HPCHEM1\MSVOA_U\METHOD\SFAMULM092420WMA.M
 Quant Title : VOC Analysis
 QLast Update : Fri Sep 25 09:11:02 2020
 Response via : Initial Calibration

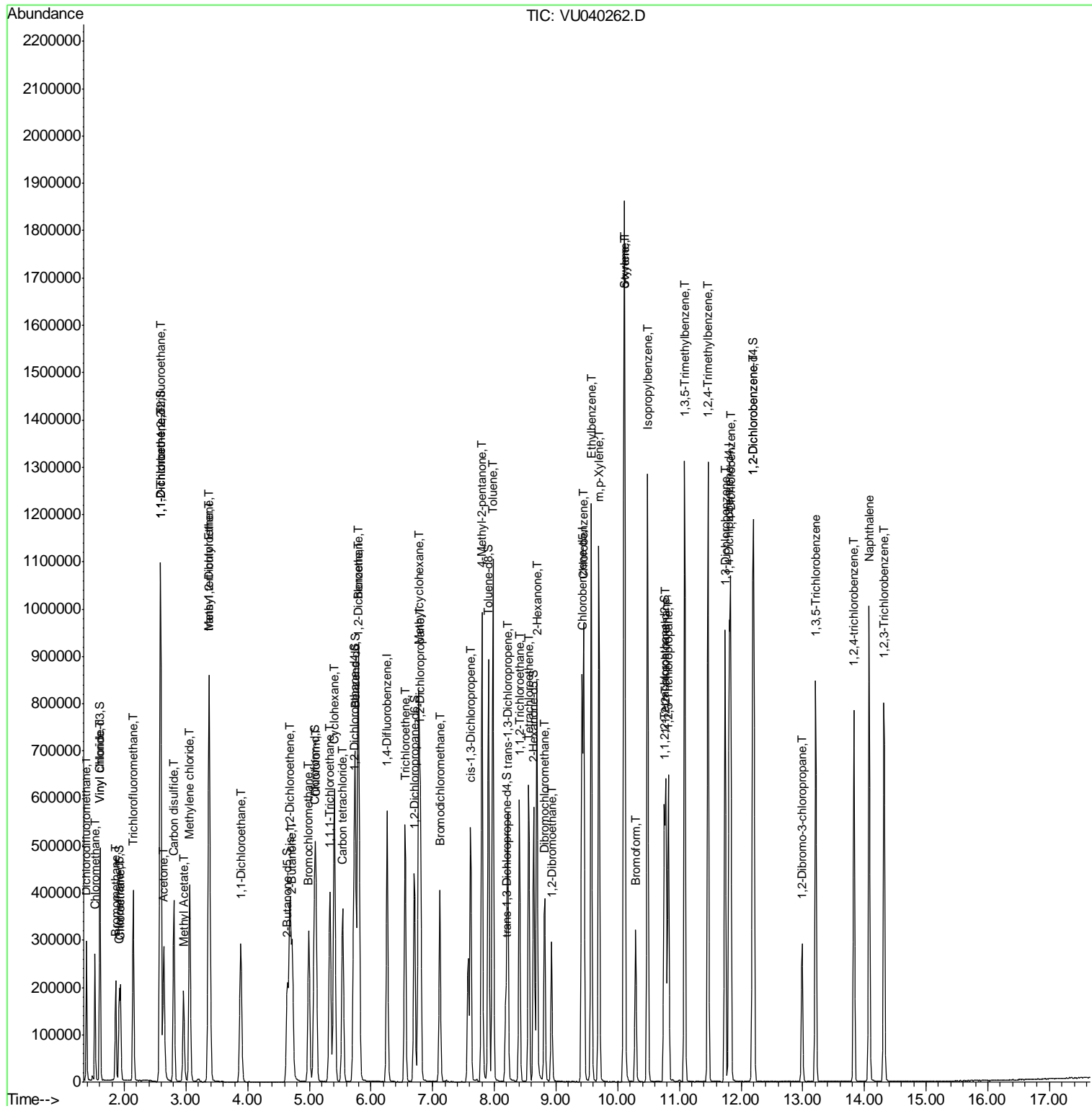
Internal Standards	R.T.	QIon	Response	Conc	Units	Dev(Min)
42) Toluene	7.98	91	734032	54.320	ug/L	100
44) trans-1,3-Dichloropropene	8.22	75	288738	59.869	ug/L	100
45) 1,1,2-Trichloroethane	8.41	97	171030	55.457	ug/L	100
46) Tetrachloroethene	8.56	164	125394	56.842	ug/L	100
48) 2-Hexanone	8.69	43	546788	122.052	ug/L	100
49) Dibromochloromethane	8.82	129	188240	60.822	ug/L	100
50) 1,2-Dibromoethane	8.93	107	182924	56.211	ug/L	100
51) Chlorobenzene	9.45	112	455655	55.491	ug/L	100
52) Ethylbenzene	9.57	91	808416	54.409	ug/L	100
53) m,p-Xylene	9.70	106	300261	54.869	ug/L	100
54) o-xylene	10.10	106	292115	53.860	ug/L	100
55) Styrene	10.11	104	509766	56.052	ug/L	100
57) 1,1,2,2-Tetrachloroethane	10.78	83	295662	53.679	ug/L	100
59) Bromoform	10.29	173	130554	55.430	ug/L	100
60) 1,2,3-Trichloropropane	10.82	75	249588	50.685	ug/L	100
61) Isopropylbenzene	10.48	105	769325	49.720	ug/L	100
62) 1,3,5-Trimethylbenzene	11.09	105	641115	48.639	ug/L	100
63) 1,2,4-Trimethylbenzene	11.47	105	664333	50.120	ug/L	100
64) 1,3-Dichlorobenzene	11.74	146	344308	52.090	ug/L	100
65) 1,4-Dichlorobenzene	11.83	146	358575	53.481	ug/L	100
67) 1,2-Dichlorobenzene	12.21	146	345359	51.656	ug/L	100
68) 1,2-Dibromo-3-chloropropan	12.99	75	71790	51.115	ug/L	100
69) 1,3,5-Trichlorobenzene	13.21	180	236966	51.770	ug/L	100
70) 1,2,4-trichlorobenzene	13.83	180	207614	53.973	ug/L	100
71) Naphthalene	14.08	128	714219	53.527	ug/L	100
72) 1,2,3-Trichlorobenzene	14.32	180	217838	56.115	ug/L	100

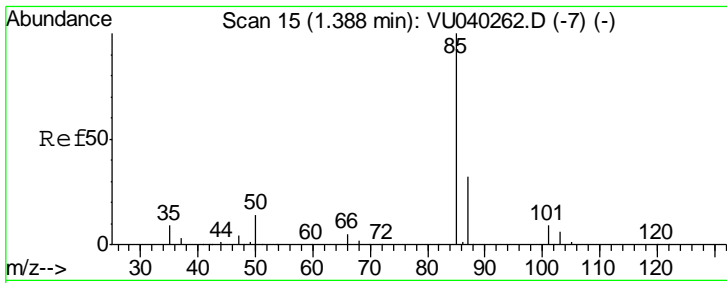
(#) = qualifier out of range (m) = manual integration (+) = signals summed

Data Path : Z:\VOASRV\HPCHEM1\MSVOA U\DATA\VU092420\
 Data File : VU040262.D
 Acq On : 24 Sep 2020 10:18
 Operator : SY/MD
 Sample : VSTD05033
 Misc : 5.0mL/MSVOA U/WATER
 ALS Vial : 4 Sample Multiplier: 1

Instrument :
 MSVOA_U
 Client Sampled :
 VSTD050203

Quant Time: Sep 25 09:18:24 2020
 Quant Method : Z:\VOASRV\HPCHEM1\MSVOA_U\METHOD\SFAMULM092420WMA.M
 Quant Title : VOC Analysis
 QLast Update : Fri Sep 25 09:11:02 2020
 Response via : Initial Calibration

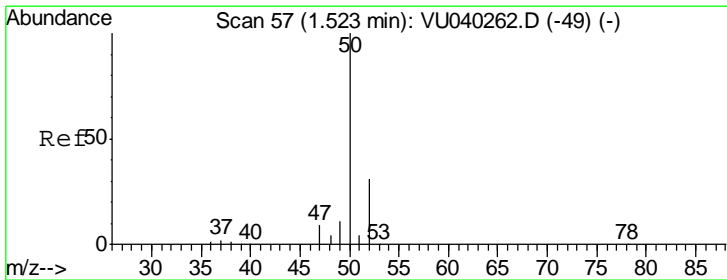
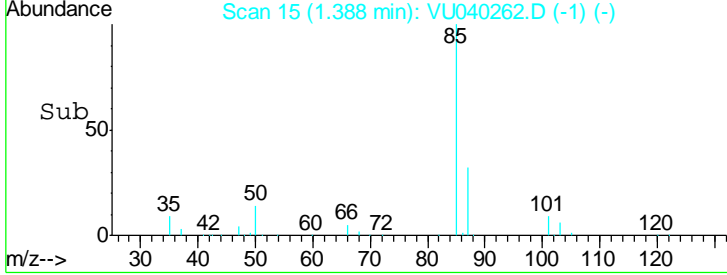
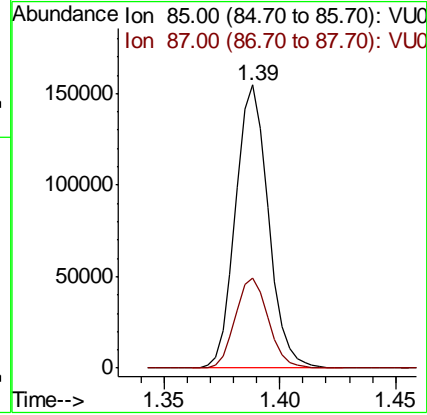
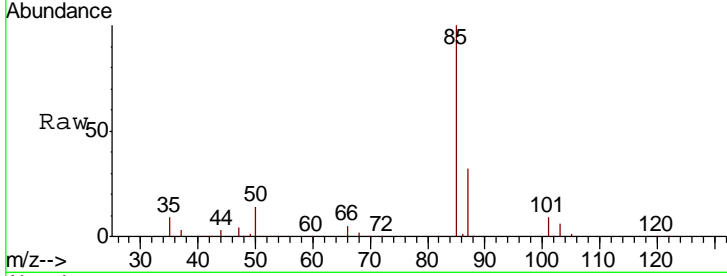




#2
 Dichlorodifluoromethane
 Concen: 51.475 ug/L
 RT: 1.39 min Scan# 15
 Delta R.T. 0.00 min
 Lab File: VU040262.D
 Acq: 24 Sep 2020 10:18

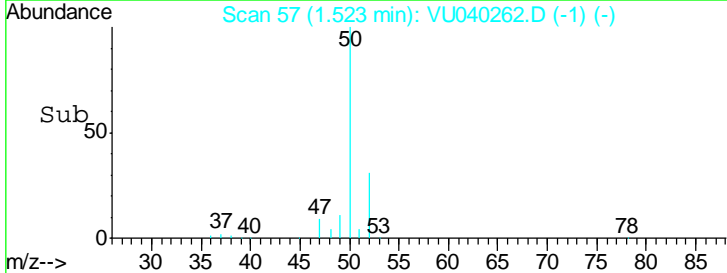
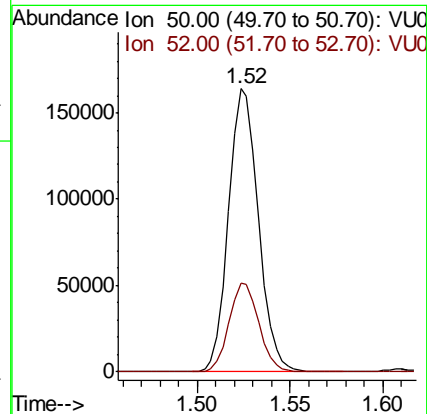
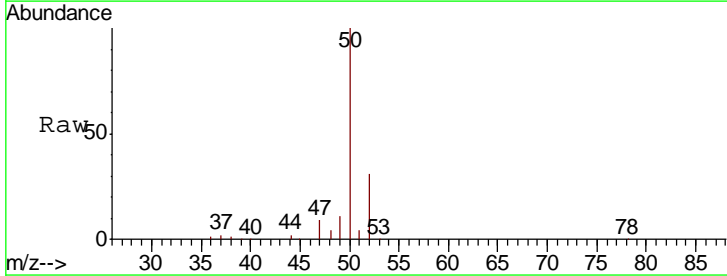
Instrument :
 MSVOA_U
 ClientSampled :
 VSTD050203

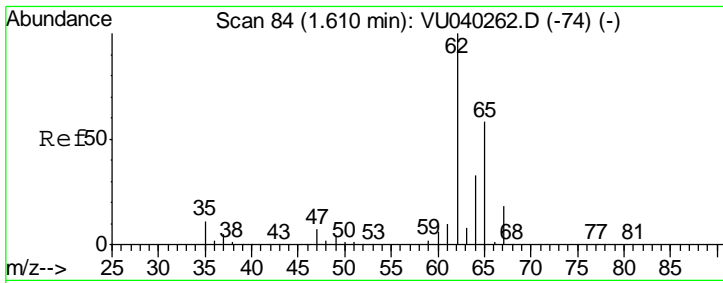
Tgt Ion: 85 Resp: 151281
 Ion Ratio Lower Upper
 85 100
 87 32.1 25.7 38.5



#3
 Chloromethane
 Concen: 52.251 ug/L
 RT: 1.52 min Scan# 57
 Delta R.T. 0.00 min
 Lab File: VU040262.D
 Acq: 24 Sep 2020 10:18

Tgt Ion: 50 Resp: 183035
 Ion Ratio Lower Upper
 50 100
 52 31.2 21.8 40.6



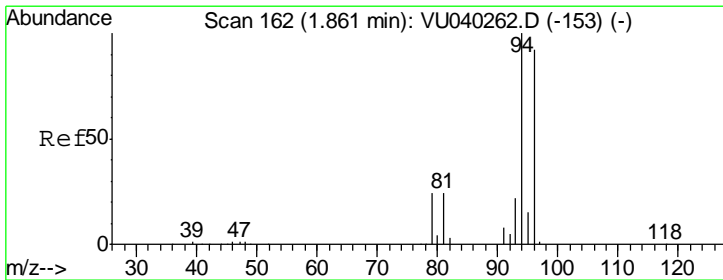
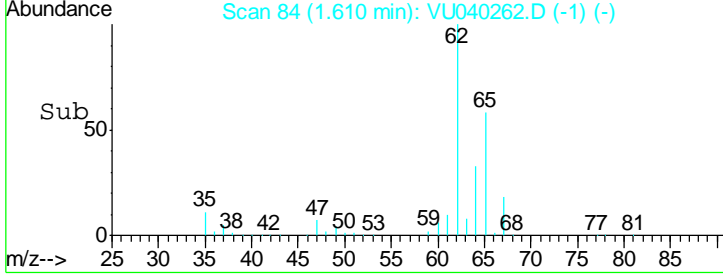
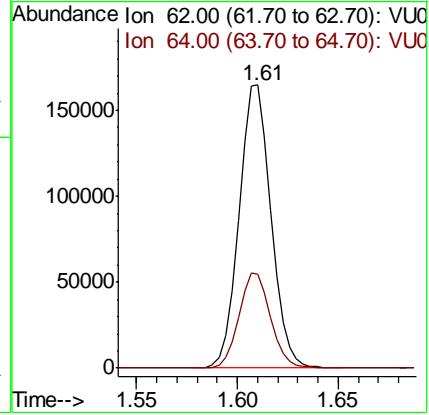
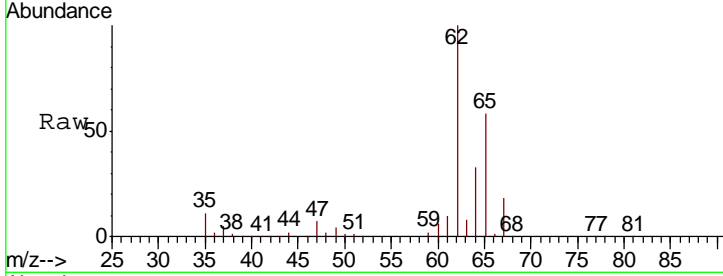


#5
 Vinyl chloride
 Concen: 49.506 ug/L
 RT: 1.61 min Scan# 84
 Delta R.T. 0.00 min
 Lab File: VU040262.D
 Acq: 24 Sep 2020 10:18

Instrument :
 MSVOA_U
ClientSampled :
 VSTD050203

Tgt Ion: 62 Resp: 183375

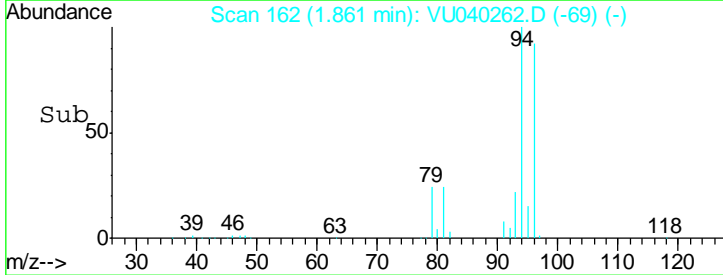
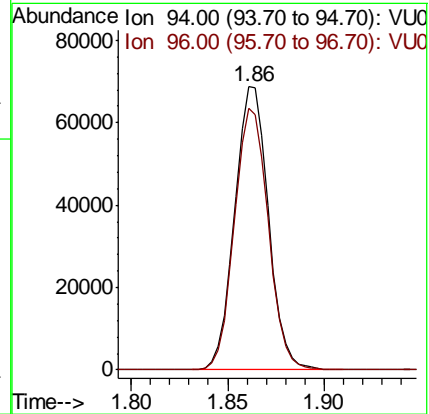
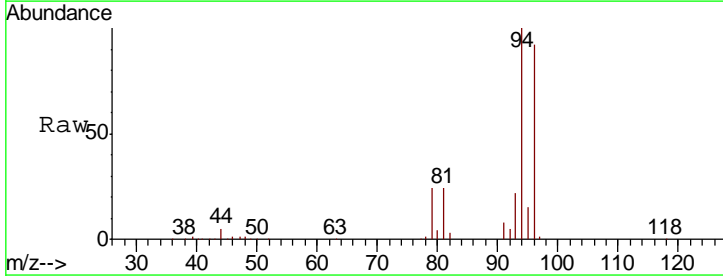
Ion	Ratio	Lower	Upper
62	100		
64	33.4	23.4	43.4

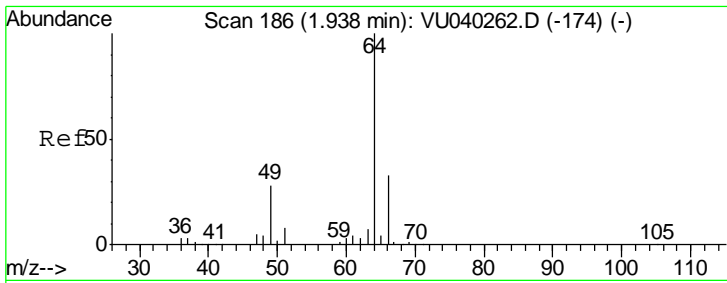


#6
 Bromomethane
 Concen: 37.614 ug/L
 RT: 1.86 min Scan# 162
 Delta R.T. 0.00 min
 Lab File: VU040262.D
 Acq: 24 Sep 2020 10:18

Tgt Ion: 94 Resp: 83191

Ion	Ratio	Lower	Upper
94	100		
96	92.4	64.7	120.1

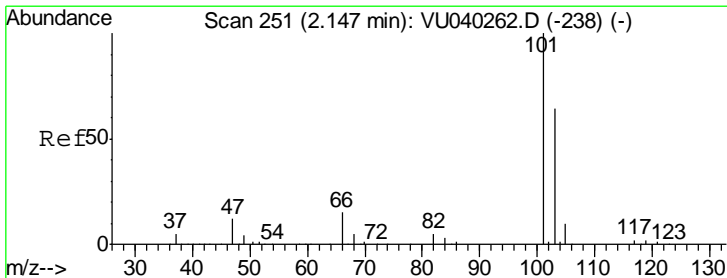
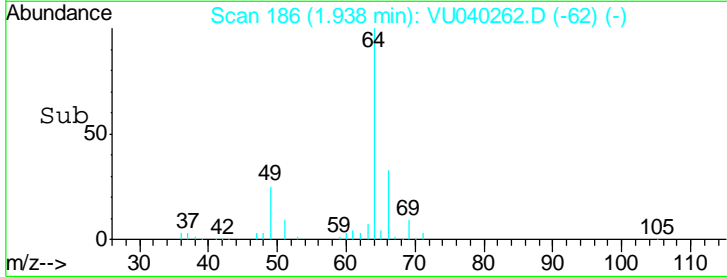
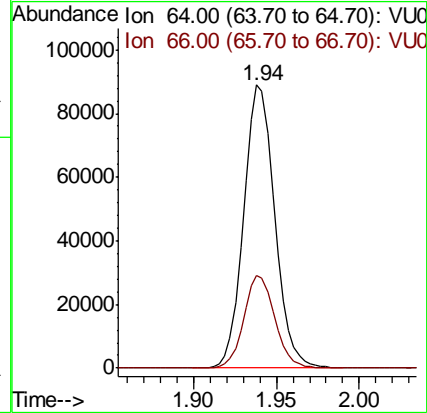
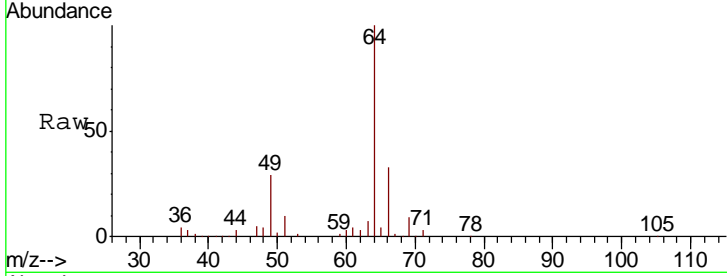




#8
 Chloroethane
 Concen: 49.219 ug/L
 RT: 1.94 min Scan# 186
 Delta R.T. 0.00 min
 Lab File: VU040262.D
 Acq: 24 Sep 2020 10:18

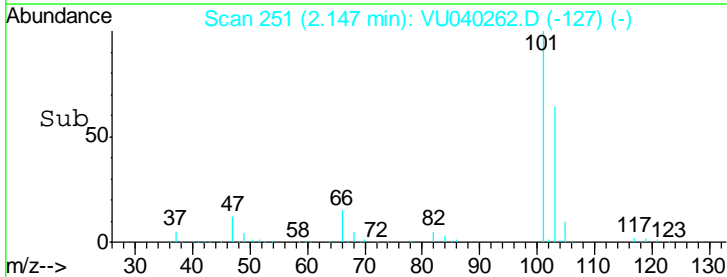
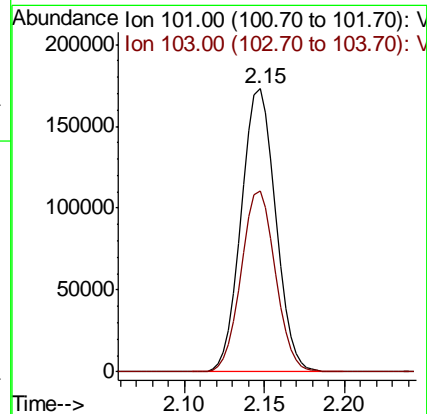
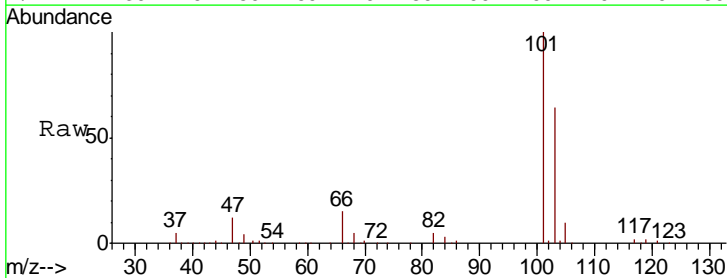
Instrument :
 MSVOA_U
 ClientSampled :
 VSTD050203

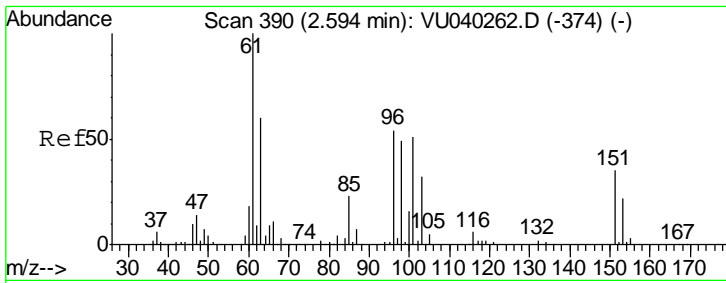
Tgt Ion: 64 Resp: 115844
 Ion Ratio Lower Upper
 64 100
 66 32.6 22.8 42.4



#9
 Trichlorofluoromethane
 Concen: 55.525 ug/L
 RT: 2.15 min Scan# 251
 Delta R.T. 0.00 min
 Lab File: VU040262.D
 Acq: 24 Sep 2020 10:18

Tgt Ion: 101 Resp: 252238
 Ion Ratio Lower Upper
 101 100
 103 63.6 50.9 76.3





#10

1,1,2-Trichloro-1,2,2-trifluoroethane

Concen: 58.081 ug/L

RT: 2.59 min Scan# 390

Delta R.T. 0.00 min

Lab File: VU040262.D

Acq: 24 Sep 2020 10:18

Instrument :
MSVOA_U
ClientSampled :
VSTD050203

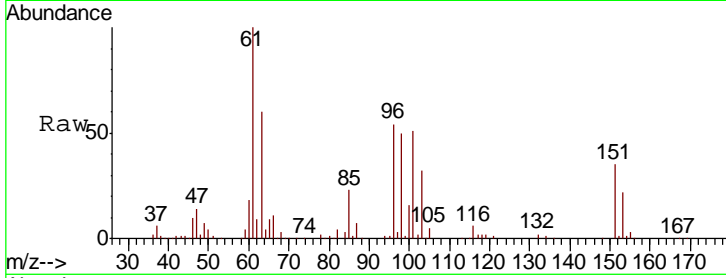
Tot Ion:101 Resp: 160377

Ion Ratio Lower Upper

101 100

85 45.0 36.0 54.0

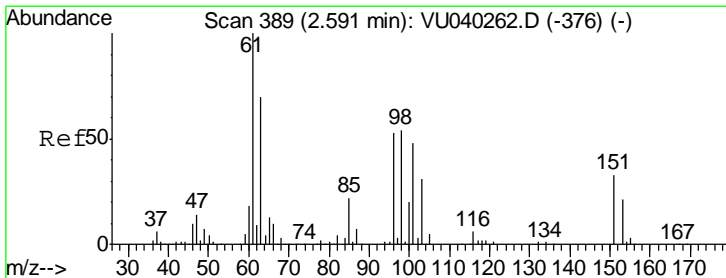
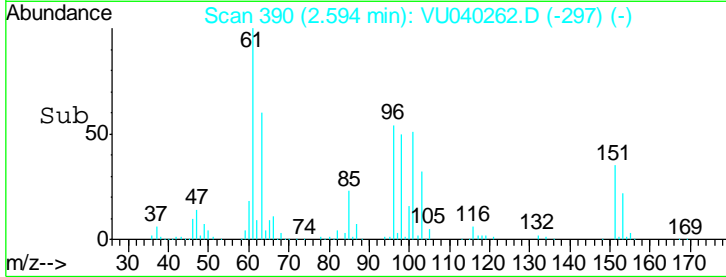
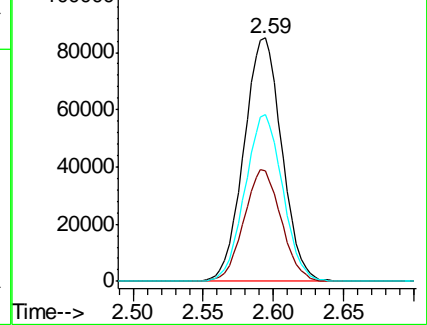
151 68.1 54.5 81.7



Abundance Ion 101.00 (100.70 to 101.70): V

Ion 85.00 (84.70 to 85.70): VU0

Ion 151.00 (150.70 to 151.70): V



#12

1,1-Dichloroethene

Concen: 56.760 ug/L

RT: 2.59 min Scan# 389

Delta R.T. 0.00 min

Lab File: VU040262.D

Acq: 24 Sep 2020 10:18

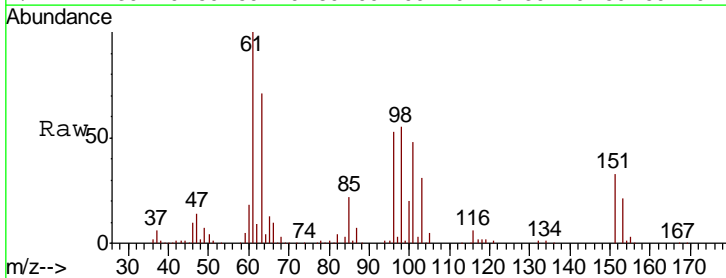
Tgt Ion: 96 Resp: 150398

Ion Ratio Lower Upper

96 100

61 188.3 131.8 244.8

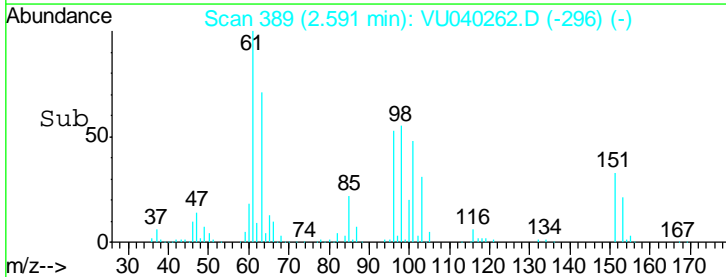
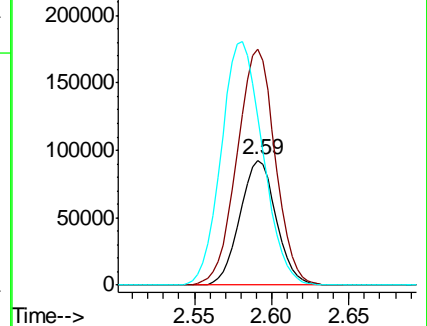
63 134.4 94.1 174.7

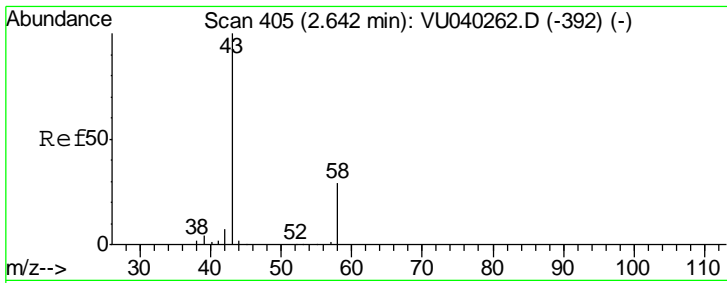


Abundance Ion 96.00 (95.70 to 96.70): VU0

Ion 61.00 (60.70 to 61.70): VU0

Ion 63.00 (62.70 to 63.70): VU0

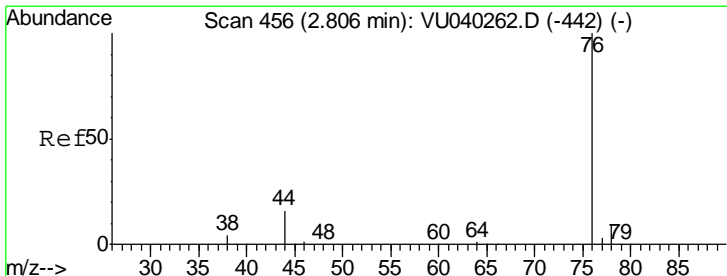
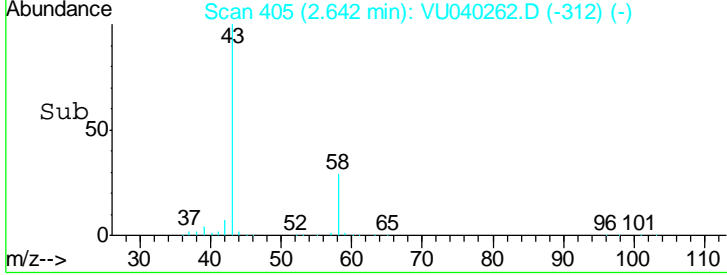
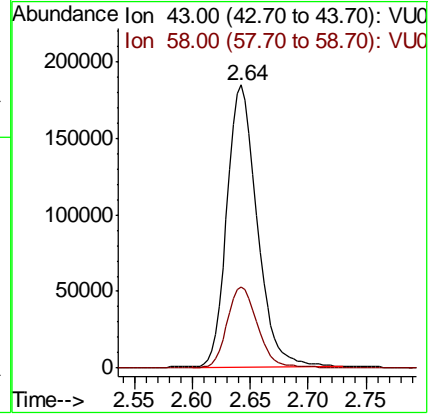
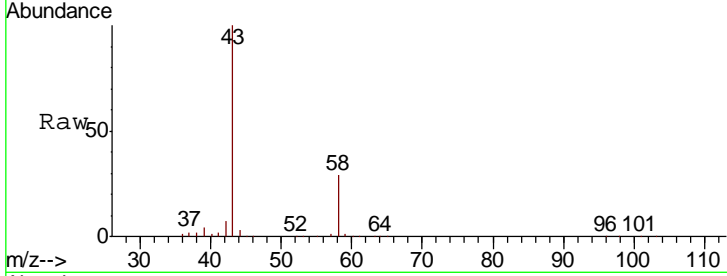




#13
 Acetone
 Concen: 122.454 ug/L
 RT: 2.64 min Scan# 405
 Delta R.T. 0.00 min
 Lab File: VU040262.D
 Acq: 24 Sep 2020 10:18

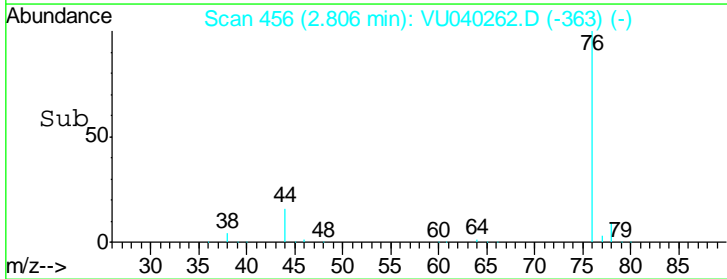
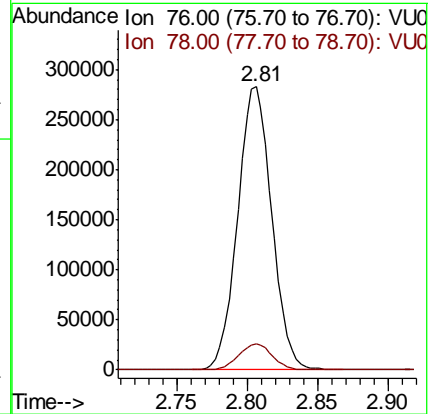
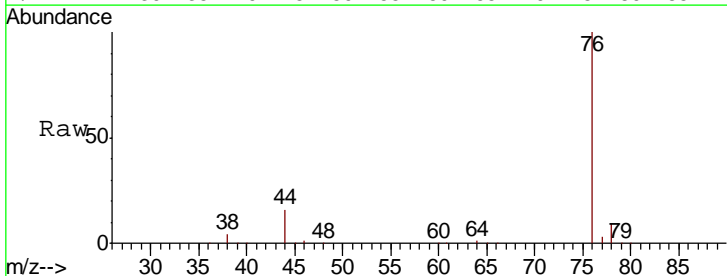
Instrument :
 MSVOA_U
ClientSampled :
 VSTD050203

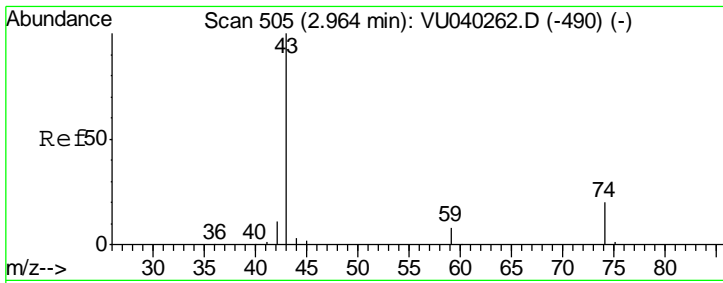
Tgt Ion	Resp	Lower	Upper
43	332880		
58	29.1	0.0	58.2



#14
 Carbon disulfide
 Concen: 59.312 ug/L
 RT: 2.81 min Scan# 456
 Delta R.T. 0.00 min
 Lab File: VU040262.D
 Acq: 24 Sep 2020 10:18

Tgt Ion	Resp	Lower	Upper
76	478869		
78	9.3	7.4	11.2

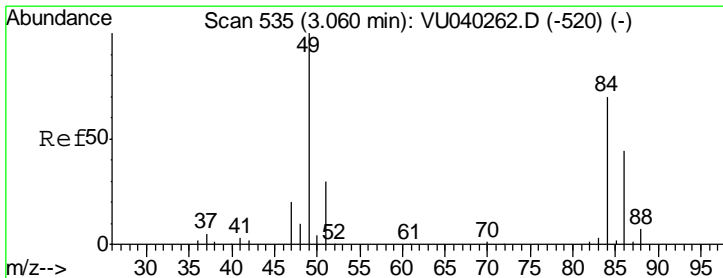
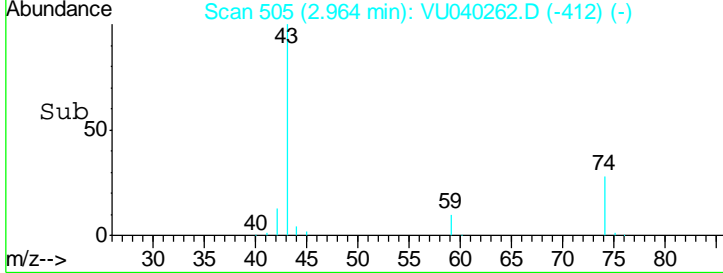
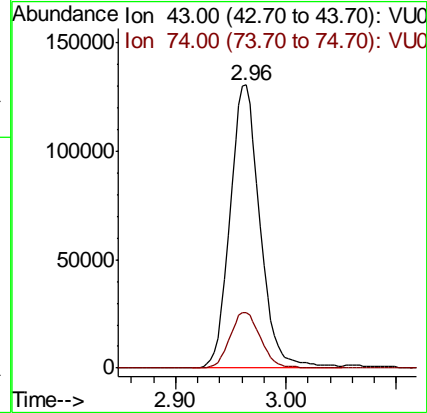
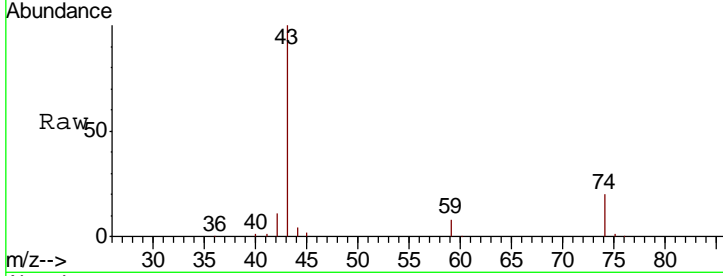




#15
 Methyl Acetate
 Concen: 62.962 ug/L
 RT: 2.96 min Scan# 505
 Delta R.T. 0.00 min
 Lab File: VU040262.D
 Acq: 24 Sep 2020 10:18

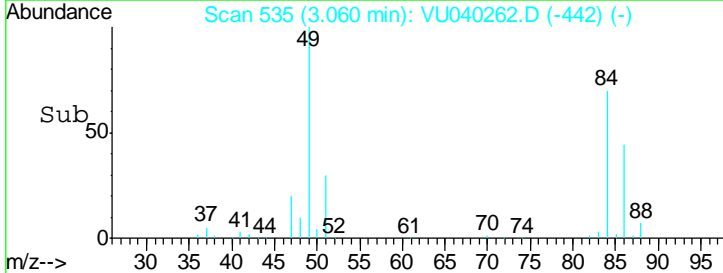
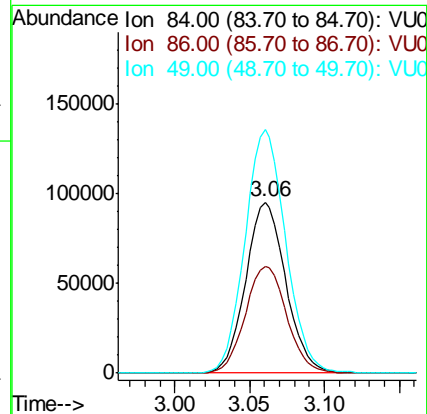
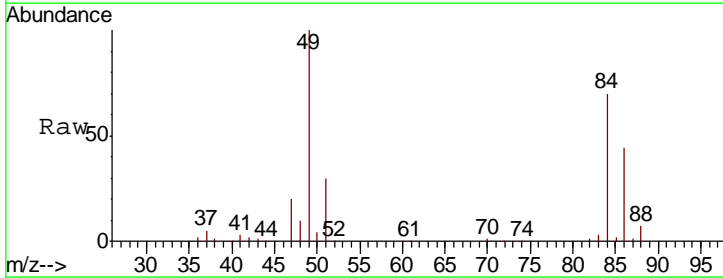
Instrument :
 MSVOA_U
 ClientSampled :
 VSTD050203

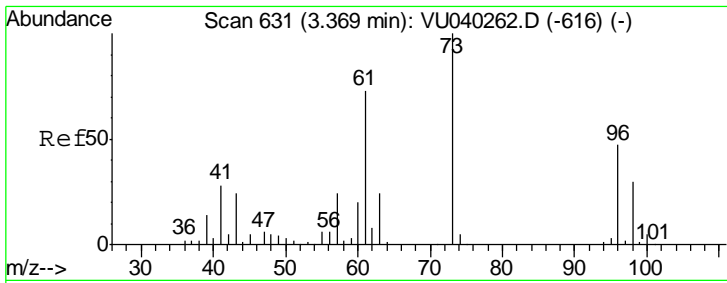
Tgt Ion	Resp	Lower	Upper
43	100		
74	20.3	16.2	24.4



#16
 Methylene chloride
 Concen: 54.402 ug/L
 RT: 3.06 min Scan# 535
 Delta R.T. 0.00 min
 Lab File: VU040262.D
 Acq: 24 Sep 2020 10:18

Tgt Ion	Resp	Lower	Upper
84	100		
86	62.7	43.9	81.5
49	142.4	99.7	185.1

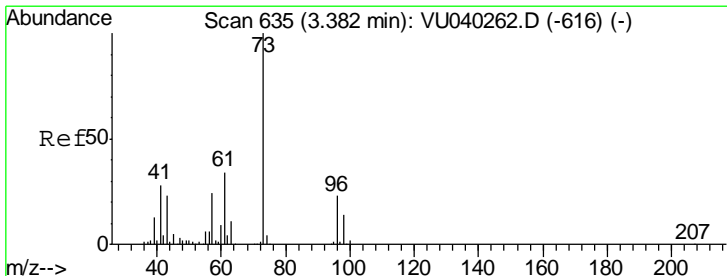
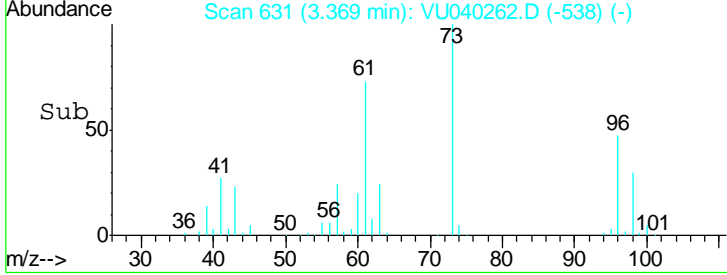
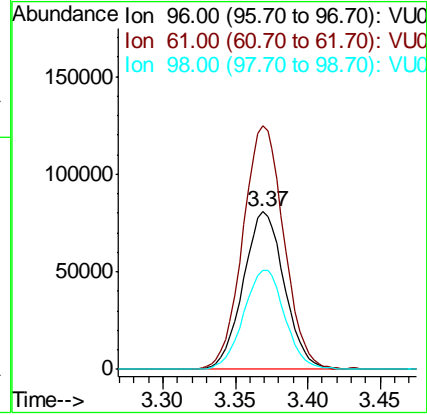
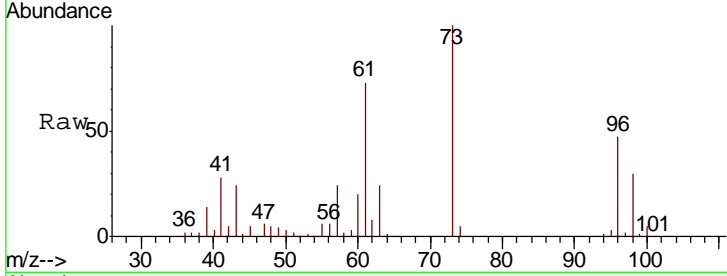




#17
 trans-1,2-Dichloroethene
 Concen: 56.215 ug/L
 RT: 3.37 min Scan# 631
 Delta R.T. 0.00 min
 Lab File: VU040262.D
 Acq: 24 Sep 2020 10:18

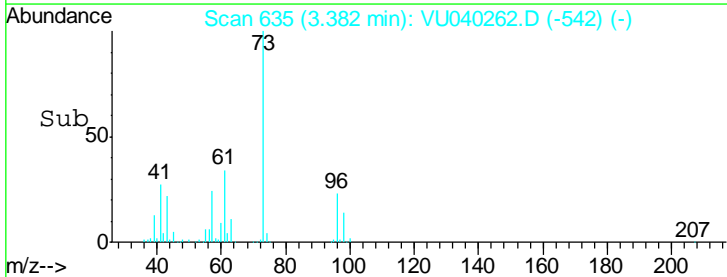
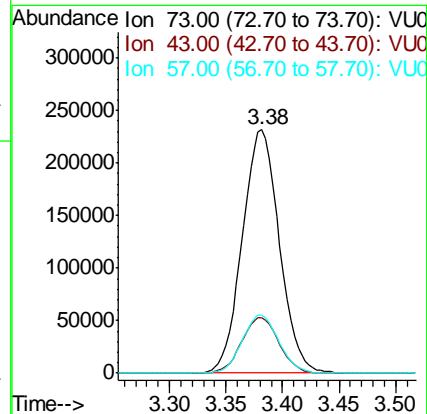
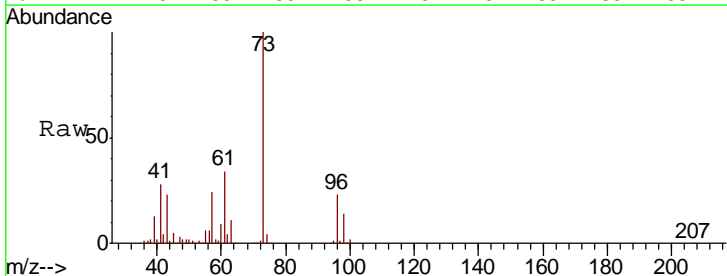
Instrument :
 MSVOA_U
ClientSampled :
 VSTD050203

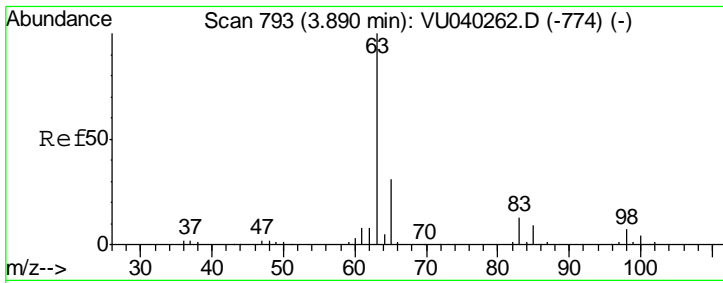
Tgt Ion	Resp	Lower	Upper
96	159004		
Ion Ratio			
96	100		
61	154.5	108.1	200.9
98	63.1	44.2	82.0



#18
 Methyl tert-butyl Ether
 Concen: 54.418 ug/L
 RT: 3.38 min Scan# 635
 Delta R.T. 0.00 min
 Lab File: VU040262.D
 Acq: 24 Sep 2020 10:18

Tgt Ion	Resp	Lower	Upper
73	529175		
Ion Ratio			
73	100		
43	23.1	18.5	27.7
57	23.5	18.8	28.2

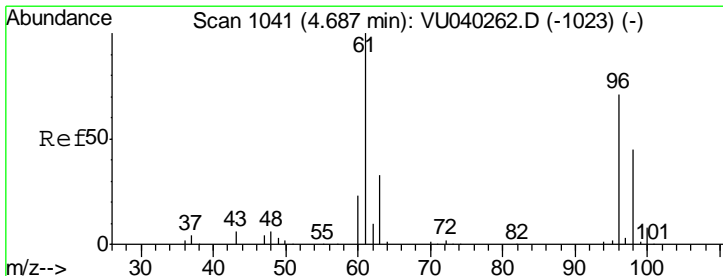
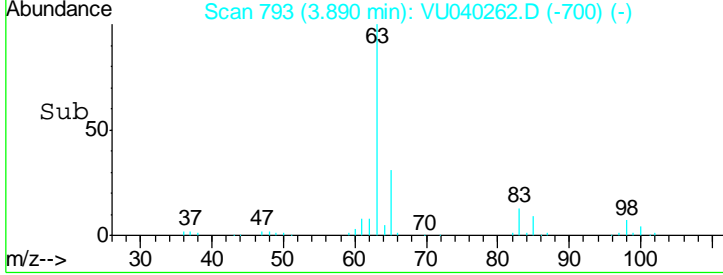
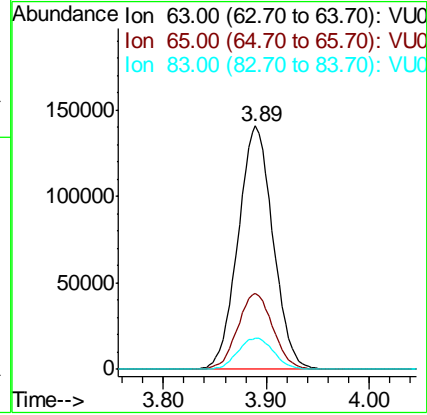
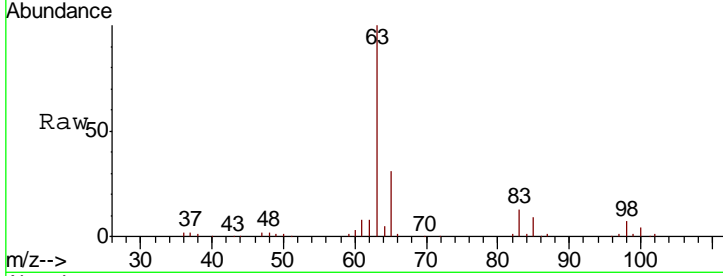




#19
 1,1-Dichloroethane
 Concen: 58.222 ug/L
 RT: 3.89 min Scan# 793
 Delta R.T. 0.00 min
 Lab File: VU040262.D
 Acq: 24 Sep 2020 10:18

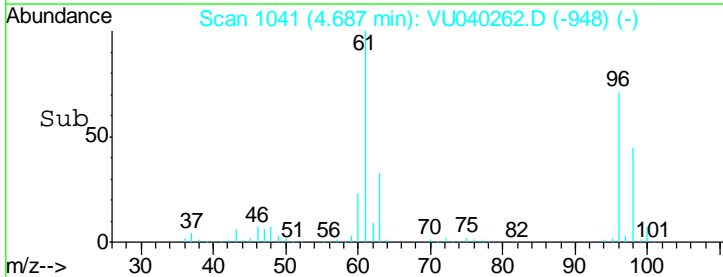
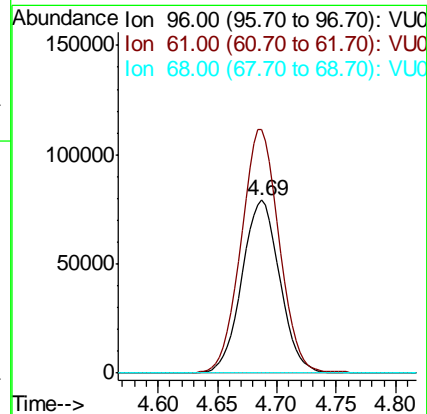
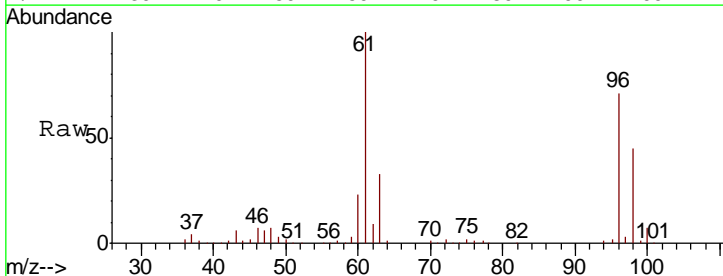
Instrument : MSVOA_U
 ClientSampled : VSTD050203

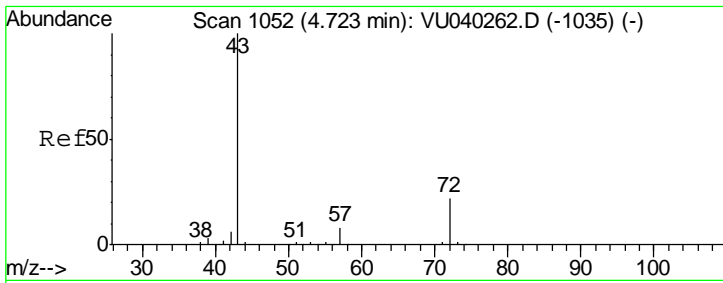
Tgt Ion	Resp	Lower	Upper
63	100		
65	31.4	22.0	40.8
83	12.7	8.9	16.5



#20
 cis-1,2-Dichloroethene
 Concen: 54.836 ug/L
 RT: 4.69 min Scan# 1041
 Delta R.T. 0.00 min
 Lab File: VU040262.D
 Acq: 24 Sep 2020 10:18

Tgt Ion	Resp	Lower	Upper
96	100		
61	140.8	98.6	183.0
68	0.0	0.0	0.0

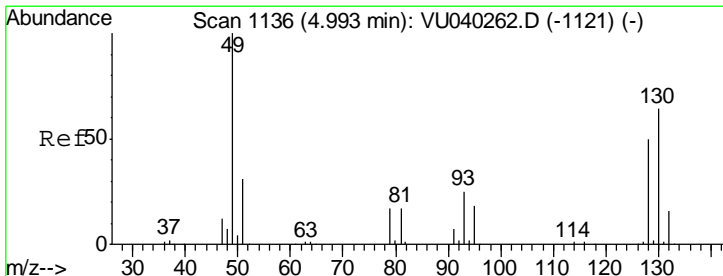
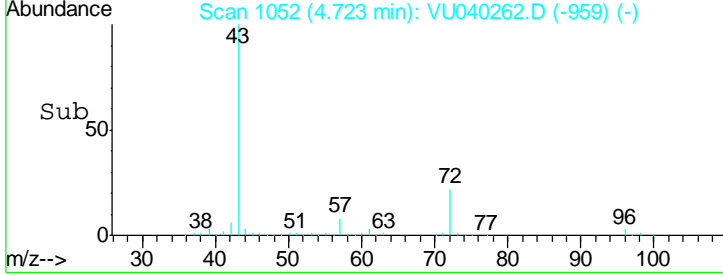
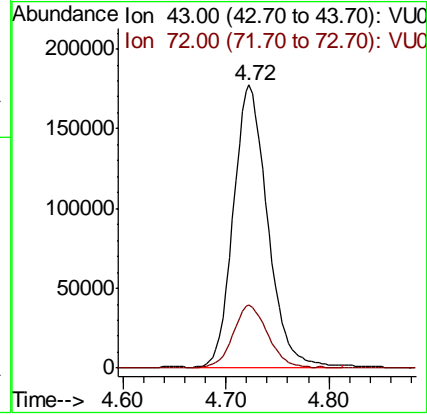
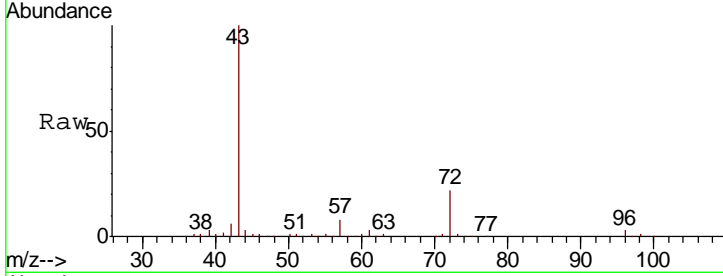




#22
 2-Butanone
 Concen: 126.229 ug/L
 RT: 4.72 min Scan# 1052
 Delta R.T. 0.00 min
 Lab File: VU040262.D
 Acq: 24 Sep 2020 10:18

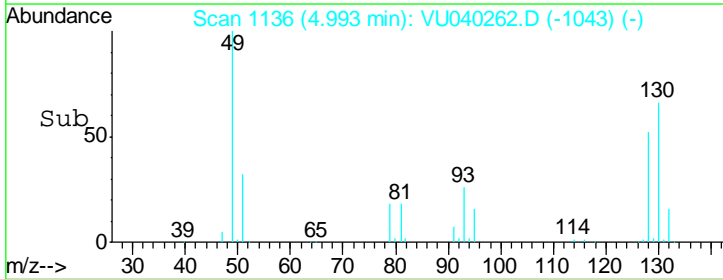
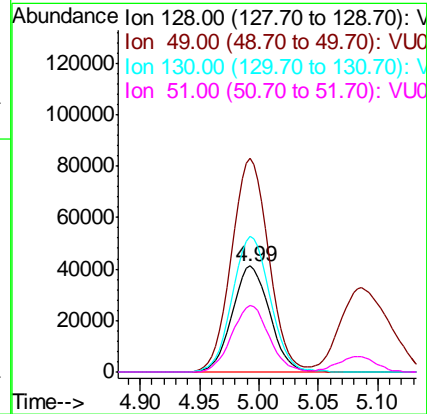
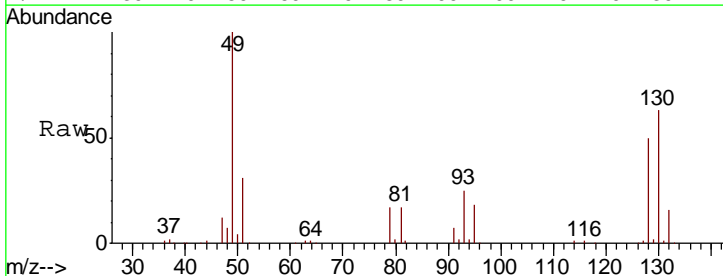
Instrument :
 MSVOA_U
ClientSampled :
 VSTD050203

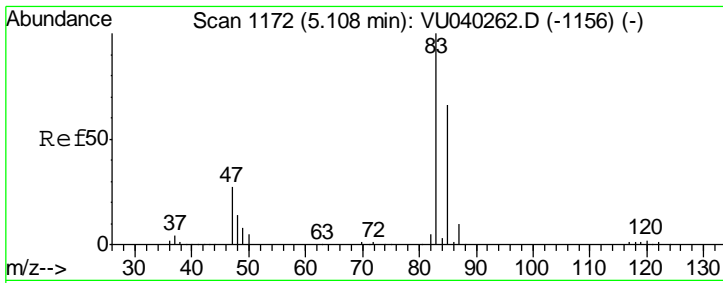
Tgt Ion	Resp	Lower	Upper
43	100		
72	22.9	11.5	34.4



#23
 Bromochloromethane
 Concen: 58.672 ug/L
 RT: 4.99 min Scan# 1136
 Delta R.T. 0.00 min
 Lab File: VU040262.D
 Acq: 24 Sep 2020 10:18

Tgt Ion	Resp	Lower	Upper
128	100		
49	201.1	140.8	261.4
130	127.4	89.2	165.6
51	62.8	50.2	75.4

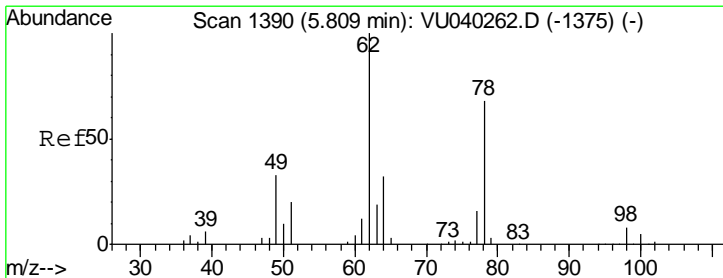
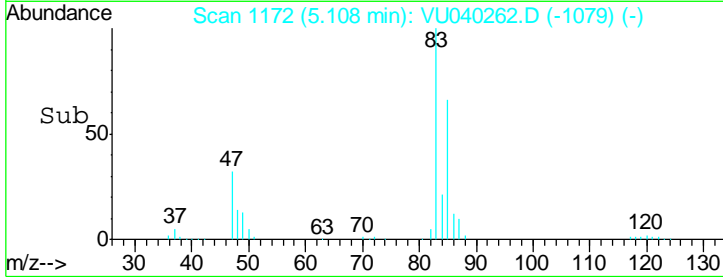
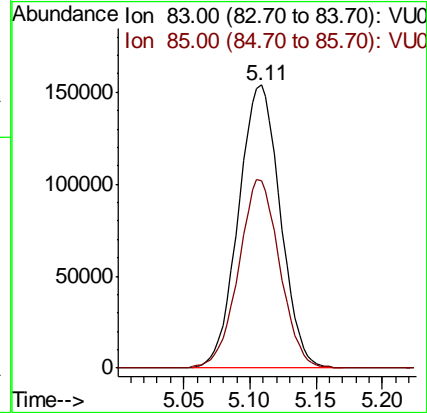
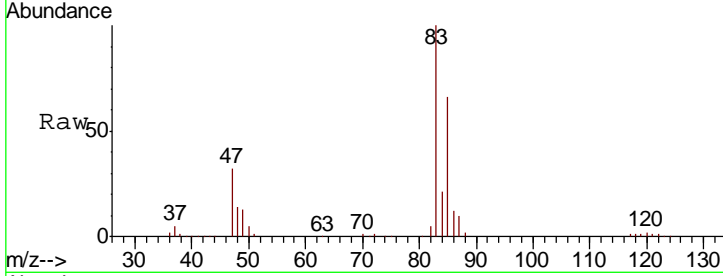




#25
 Chloroform
 Concen: 60.500 ug/L
 RT: 5.11 min Scan# 1172
 Delta R.T. 0.00 min
 Lab File: VU040262.D
 Acq: 24 Sep 2020 10:18

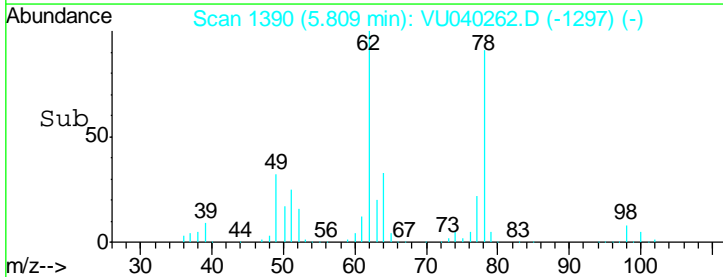
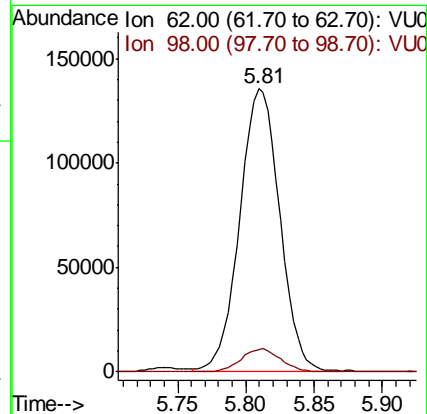
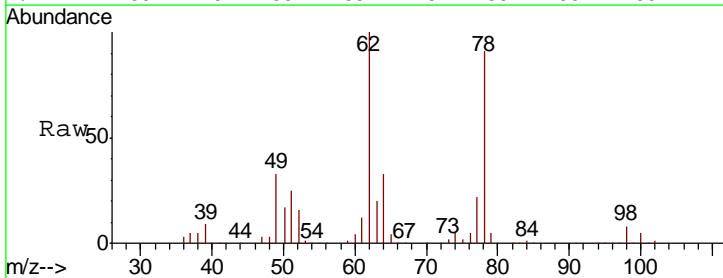
Instrument :
 MSVOA_U
ClientSampled :
 VSTD050203

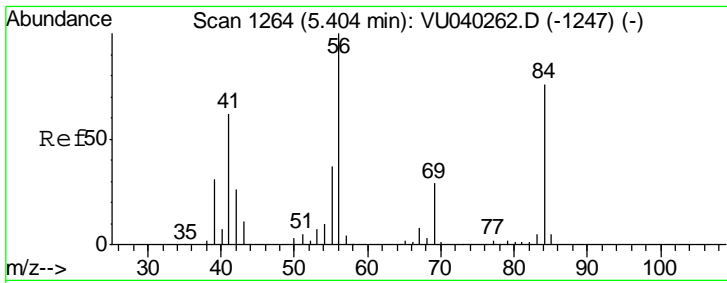
Tgt Ion: 83 Resp: 336554
 Ion Ratio Lower Upper
 83 100
 85 66.3 46.4 86.2



#27
 1,2-Dichloroethane
 Concen: 58.820 ug/L
 RT: 5.81 min Scan# 1390
 Delta R.T. 0.00 min
 Lab File: VU040262.D
 Acq: 24 Sep 2020 10:18

Tgt Ion: 62 Resp: 274501
 Ion Ratio Lower Upper
 62 100
 98 8.1 6.5 9.7

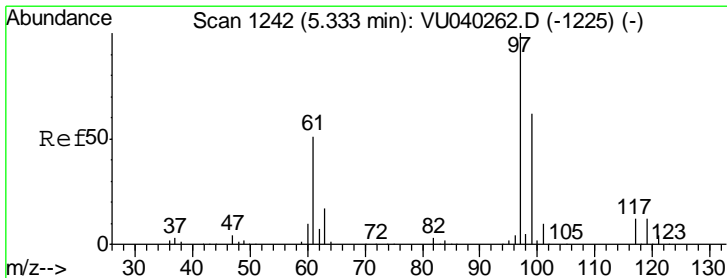
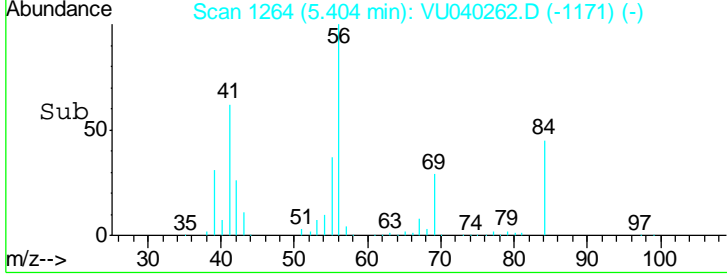
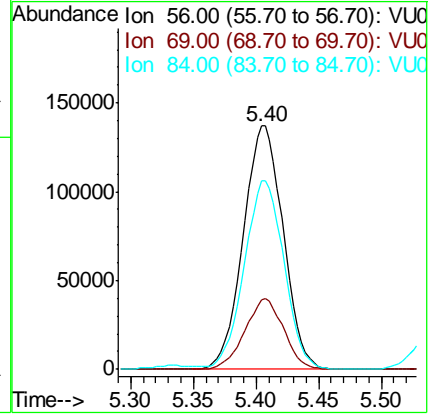
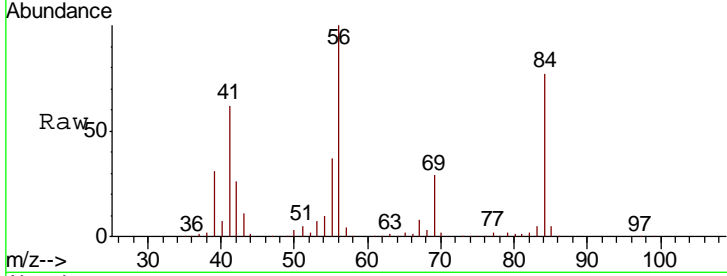




#29
 Cyclohexane
 Concen: 56.419 ug/L
 RT: 5.40 min Scan# 1264
 Delta R.T. 0.00 min
 Lab File: VU040262.D
 Acq: 24 Sep 2020 10:18

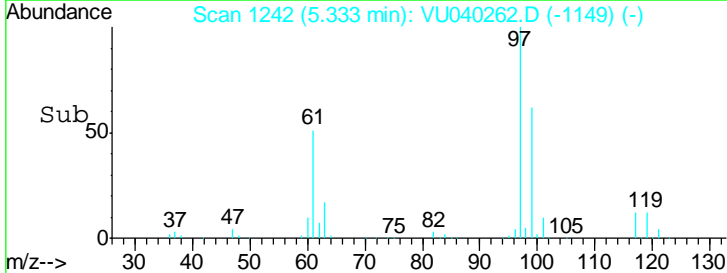
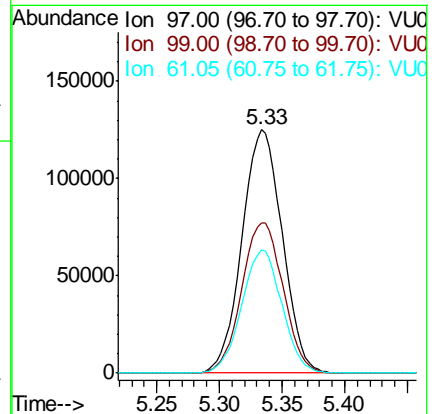
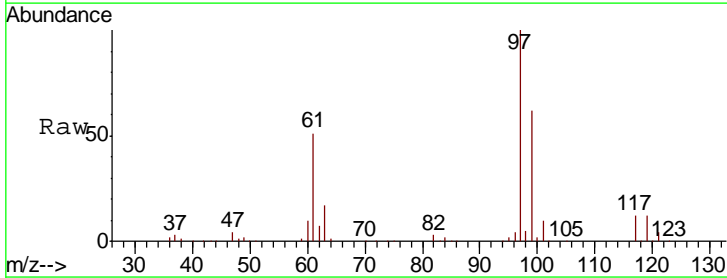
Instrument :
 MSVOA_U
 ClientSampled :
 VSTD050203

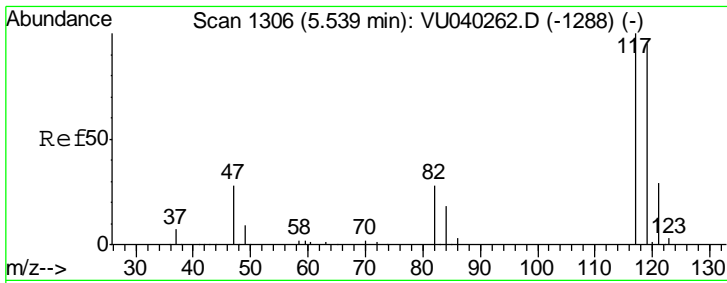
Tgt Ion	Resp	Lower	Upper
56	100		
69	28.2	22.6	33.8
84	77.4	61.9	92.9



#30
 1,1,1-Trichloroethane
 Concen: 61.488 ug/L
 RT: 5.33 min Scan# 1242
 Delta R.T. 0.00 min
 Lab File: VU040262.D
 Acq: 24 Sep 2020 10:18

Tgt Ion	Resp	Lower	Upper
97	100		
99	63.5	50.8	76.2
61	50.3	40.2	60.4

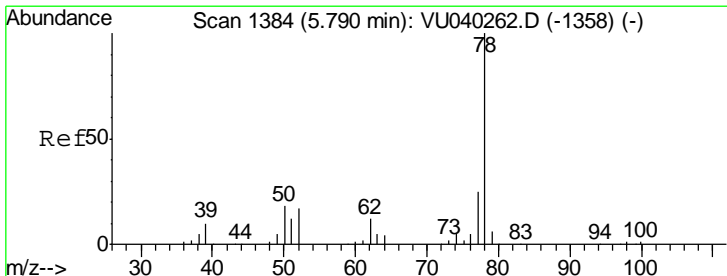
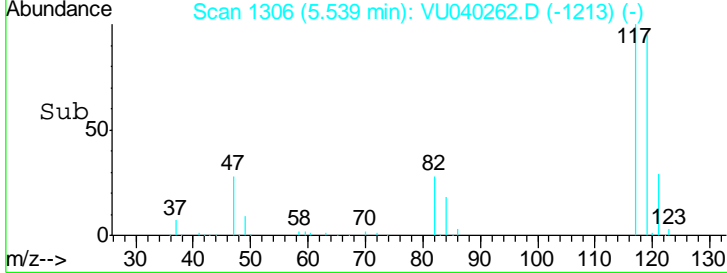
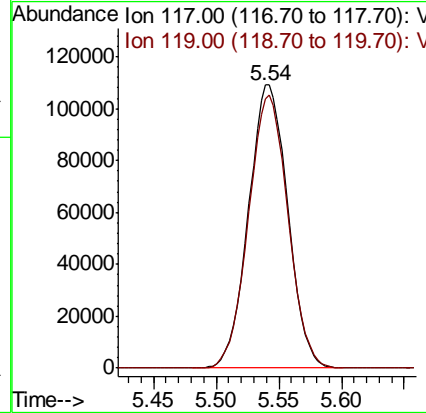
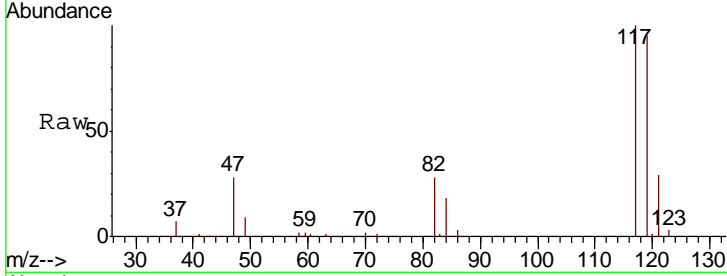




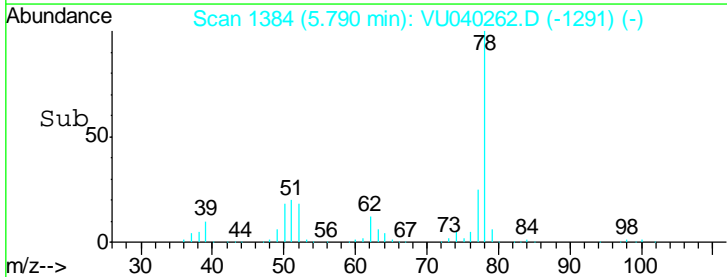
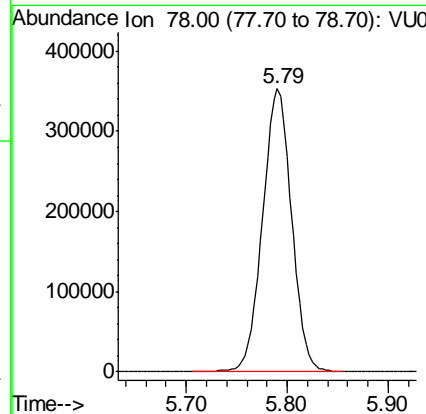
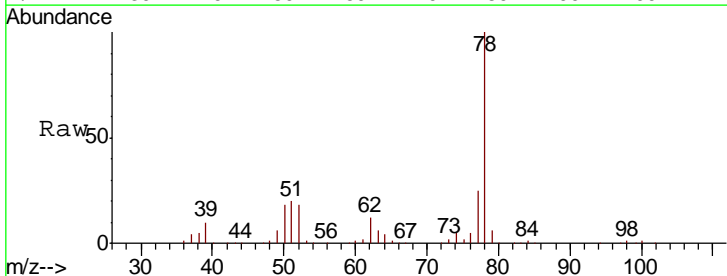
#31
 Carbon tetrachloride
 Concen: 63.786 ug/L
 RT: 5.54 min Scan# 1306
 Delta R.T. 0.00 min
 Lab File: VU040262.D
 Acq: 24 Sep 2020 10:18

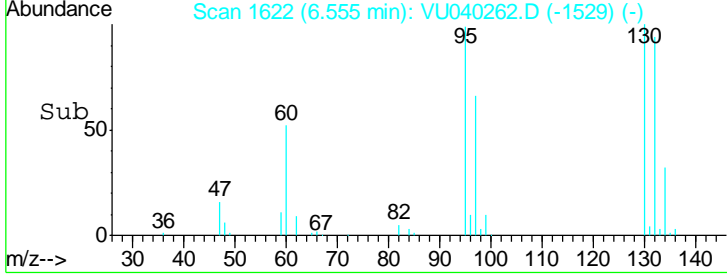
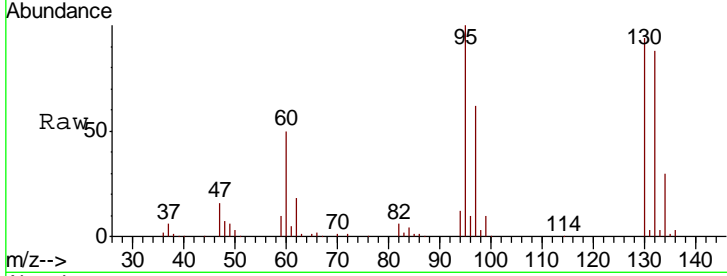
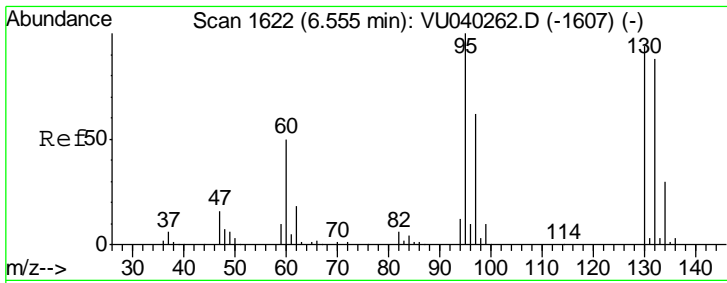
Instrument : MSVOA_U
 ClientSampled : VSTD050203

Tgt Ion: 117 Resp: 237783
 Ion Ratio Lower Upper
 117 100
 119 96.8 77.4 116.2



#33
 Benzene
 Concen: 56.160 ug/L
 RT: 5.79 min Scan# 1384
 Delta R.T. 0.00 min
 Lab File: VU040262.D
 Acq: 24 Sep 2020 10:18
 Tgt Ion: 78 Resp: 707185



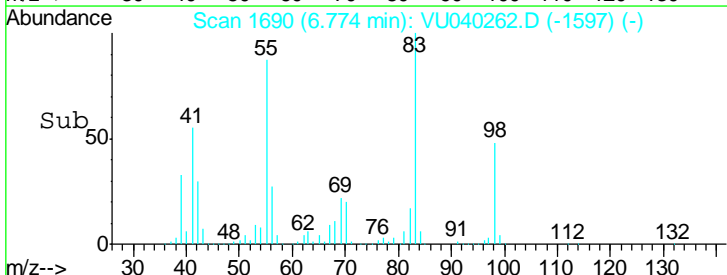
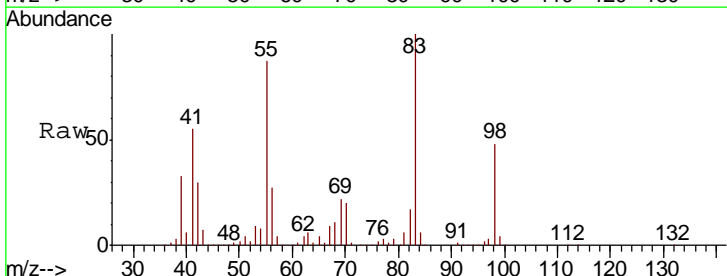
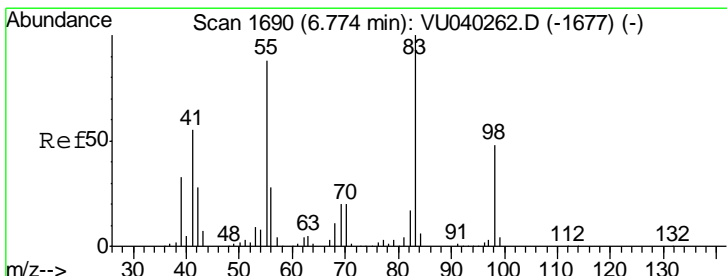
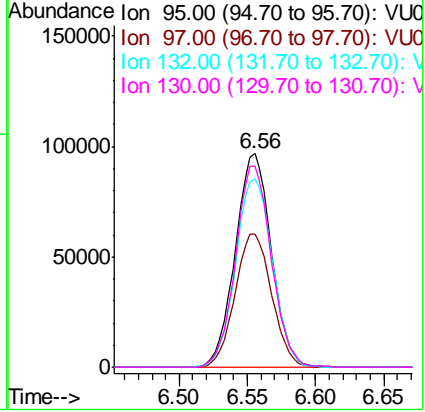


#34
 Trichloroethene
 Concen: 56.786 ug/L
 RT: 6.56 min Scan# 1622
 Delta R.T. 0.00 min
 Lab File: VU040262.D
 Acq: 24 Sep 2020 10:18

Instrument :
 MSVOA_U
 ClientSampled :
 VSTD050203

Tgt Ion: 95 Resp: 178032

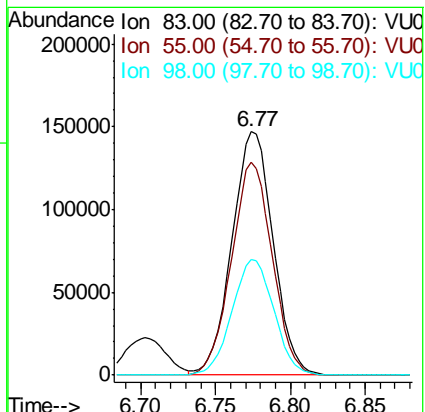
Ion	Ratio	Lower	Upper
95	100		
97	62.5	43.8	81.3
132	88.2	61.7	114.7
130	94.2	65.9	122.5

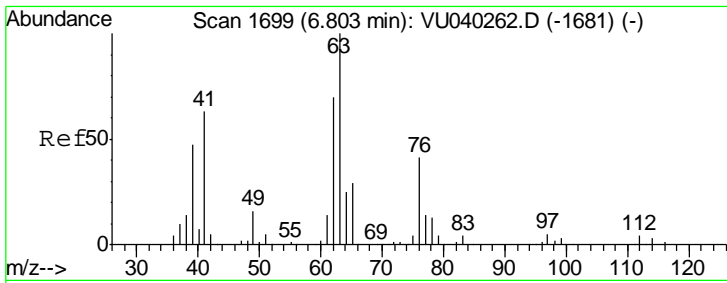


#35
 Methylcyclohexane
 Concen: 52.155 ug/L
 RT: 6.77 min Scan# 1690
 Delta R.T. 0.00 min
 Lab File: VU040262.D
 Acq: 24 Sep 2020 10:18

Tgt Ion: 83 Resp: 281857

Ion	Ratio	Lower	Upper
83	100		
55	86.7	69.4	104.0
98	48.4	38.7	58.1

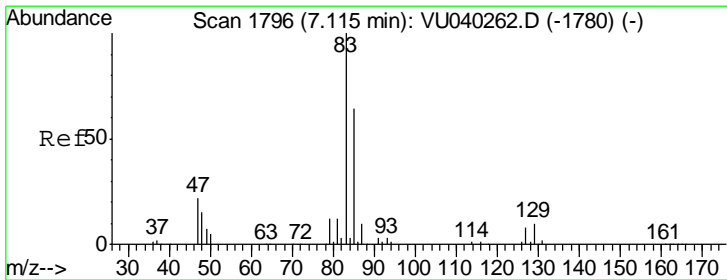
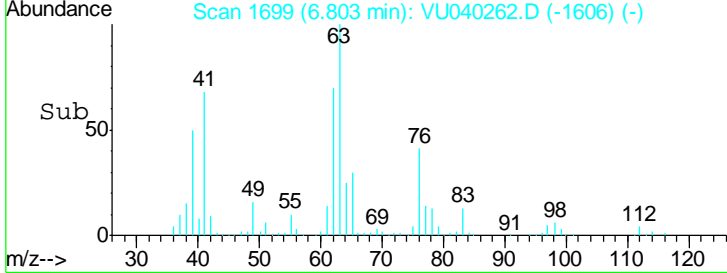
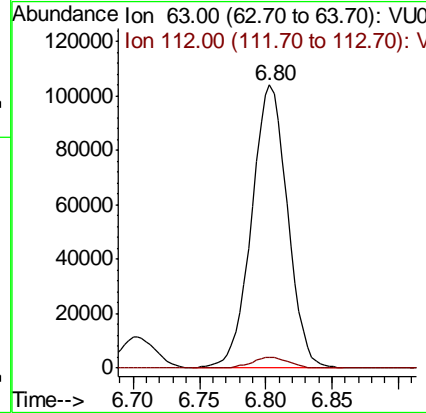
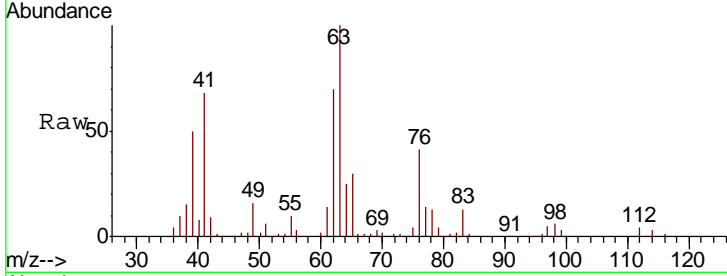




#37
 1,2-Dichloropropane
 Concen: 57.133 ug/L
 RT: 6.80 min Scan# 1699
 Delta R.T. 0.00 min
 Lab File: VU040262.D
 Acq: 24 Sep 2020 10:18

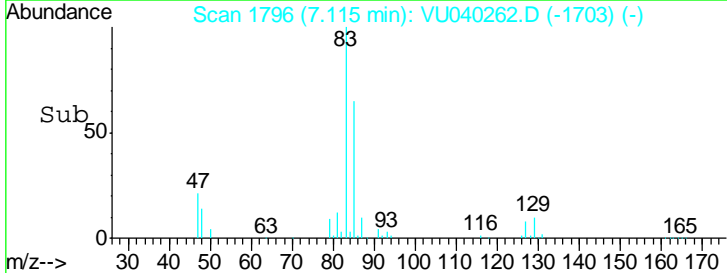
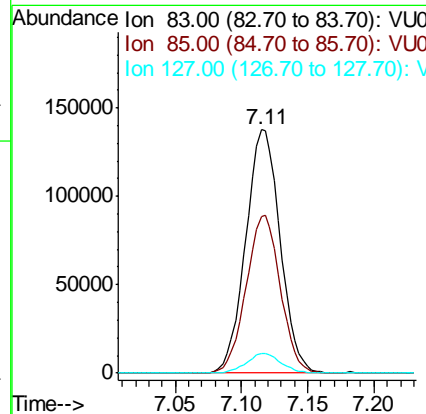
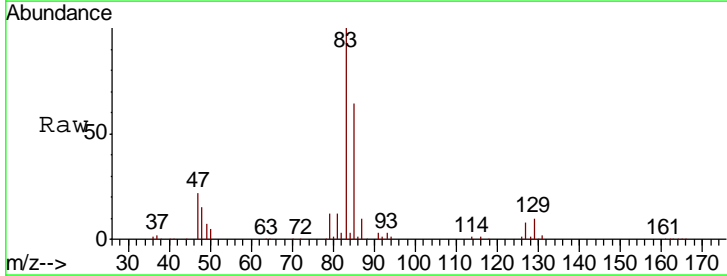
Instrument : MSVOA_U
 ClientSampled : VSTD050203

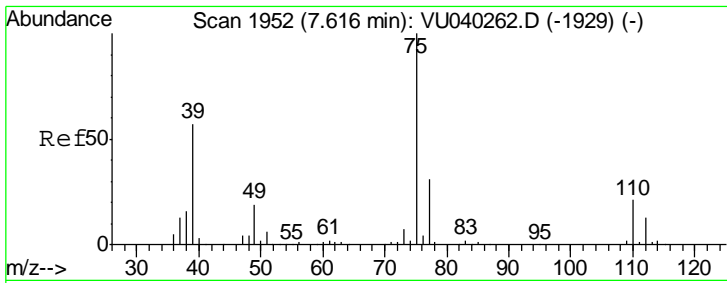
Tgt Ion	Resp	Lower	Upper
63	195135		
112	3.9	3.1	4.7



#38
 Bromodichloromethane
 Concen: 59.187 ug/L
 RT: 7.11 min Scan# 1796
 Delta R.T. 0.00 min
 Lab File: VU040262.D
 Acq: 24 Sep 2020 10:18

Tgt Ion	Resp	Lower	Upper
83	248350		
85	64.2	44.9	83.5
127	8.0	6.4	9.6

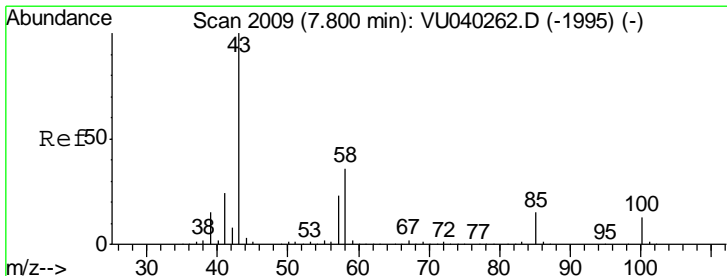
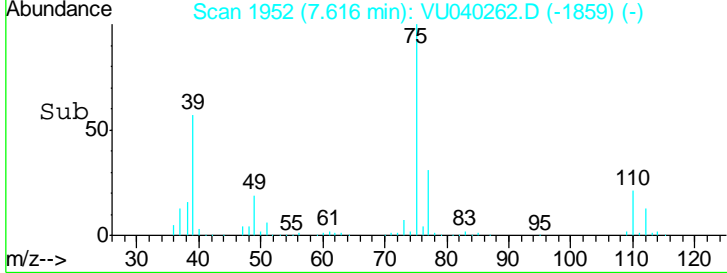
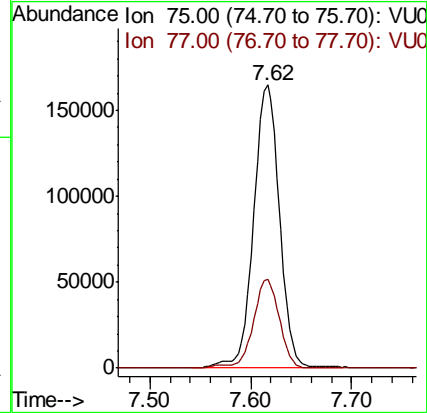
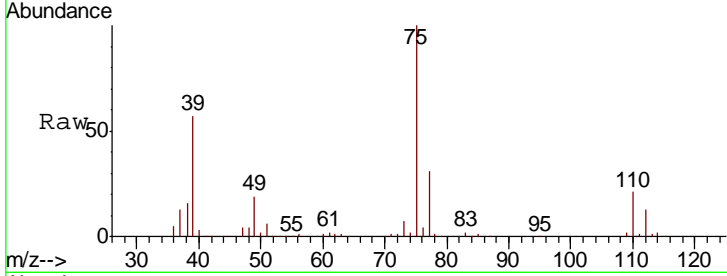




#39
 cis-1,3-Dichloropropene
 Concen: 54.257 ug/L
 RT: 7.62 min Scan# 1952
 Delta R.T. 0.00 min
 Lab File: VU040262.D
 Acq: 24 Sep 2020 10:18

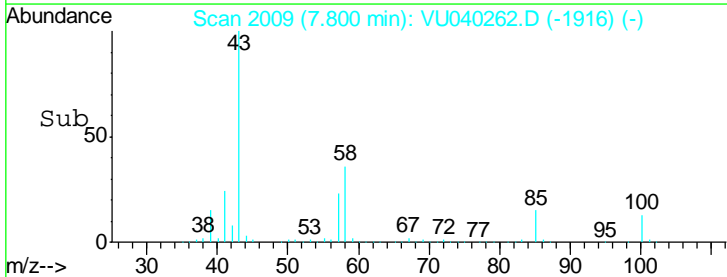
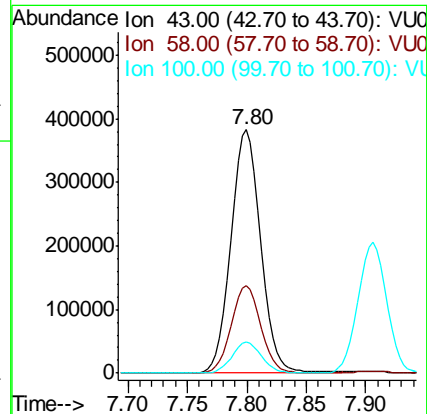
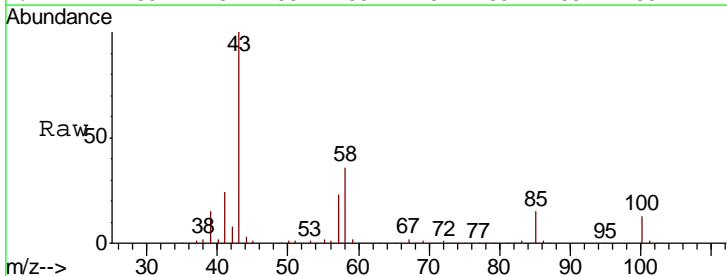
Instrument : MSVOA_U
 ClientSampled : VSTD050203

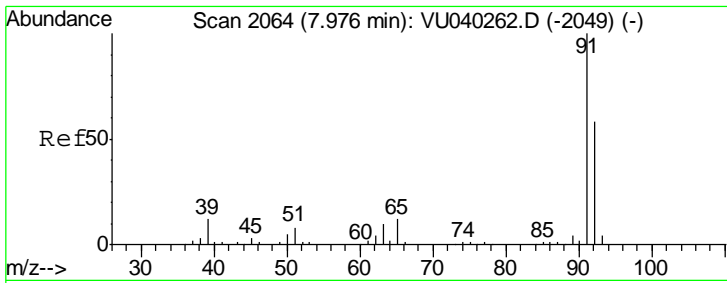
Tgt Ion: 75 Resp: 291840
 Ion Ratio Lower Upper
 75 100
 77 31.3 21.9 40.7



#40
 4-Methyl-2-pentanone
 Concen: 121.441 ug/L
 RT: 7.80 min Scan# 2009
 Delta R.T. 0.00 min
 Lab File: VU040262.D
 Acq: 24 Sep 2020 10:18

Tgt Ion: 43 Resp: 664058
 Ion Ratio Lower Upper
 43 100
 58 35.6 28.5 42.7
 100 12.5 10.0 15.0

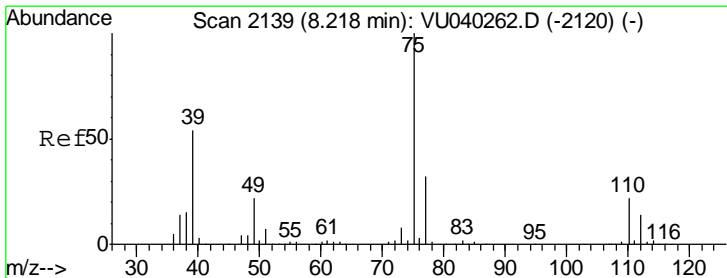
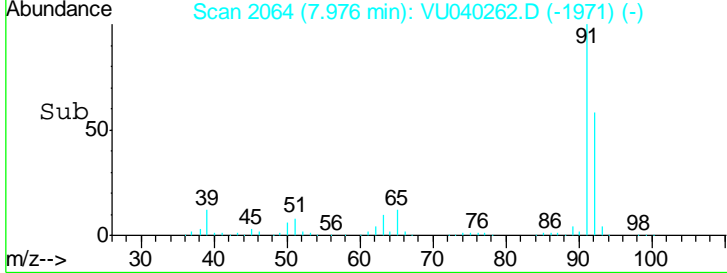
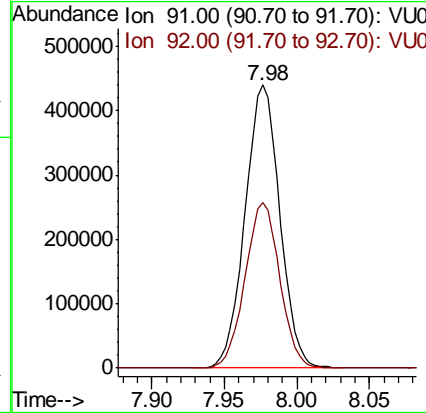
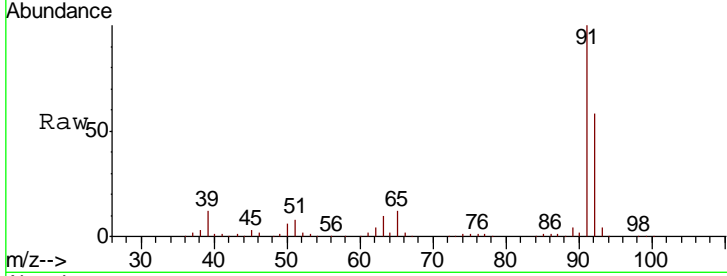




#42
 Toluene
 Concen: 54.320 ug/L
 RT: 7.98 min Scan# 2064
 Delta R.T. 0.00 min
 Lab File: VU040262.D
 Acq: 24 Sep 2020 10:18

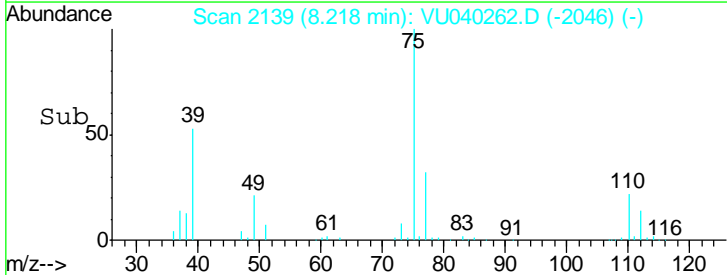
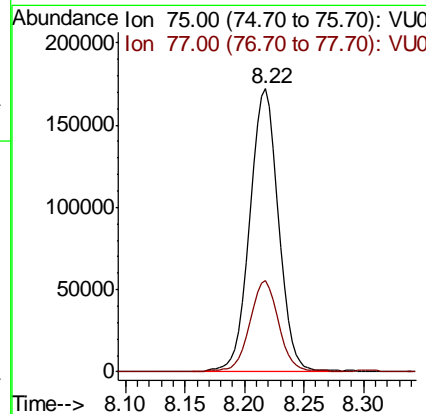
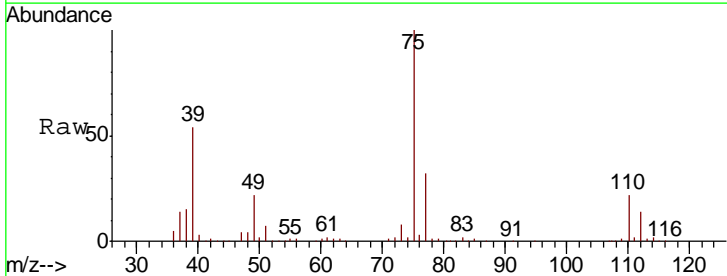
Instrument : MSVOA_U
 ClientSampled : VSTD050203

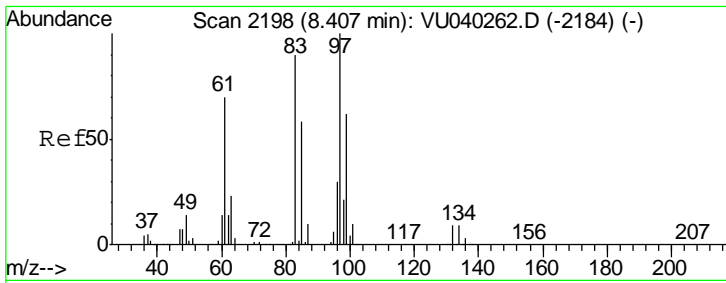
Tgt Ion: 91 Resp: 734032
 Ion Ratio Lower Upper
 91 100
 92 58.4 40.9 75.9



#44
 trans-1,3-Dichloropropene
 Concen: 59.869 ug/L
 RT: 8.22 min Scan# 2139
 Delta R.T. 0.00 min
 Lab File: VU040262.D
 Acq: 24 Sep 2020 10:18

Tgt Ion: 75 Resp: 288738
 Ion Ratio Lower Upper
 75 100
 77 32.1 22.5 41.7

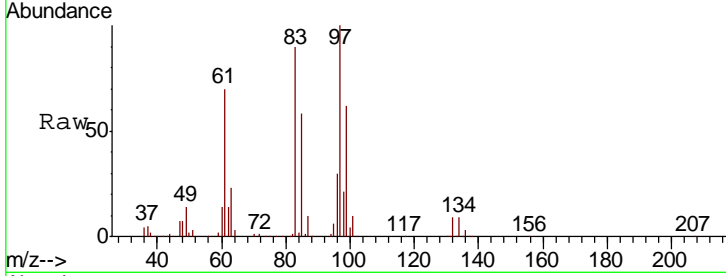




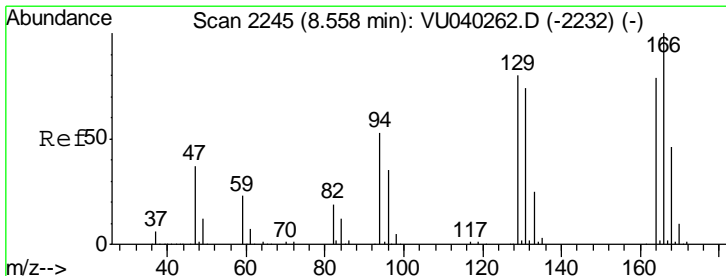
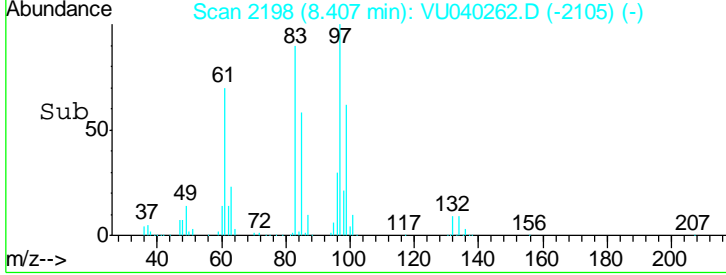
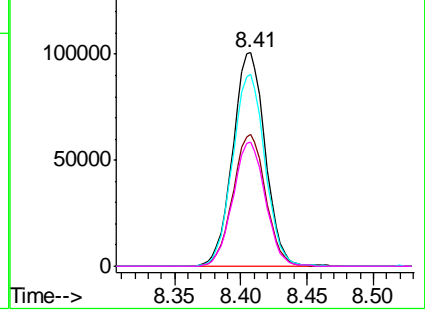
#45
 1,1,2-Trichloroethane
 Concen: 55.457 ug/L
 RT: 8.41 min Scan# 2198
 Delta R.T. 0.00 min
 Lab File: VU040262.D
 Acq: 24 Sep 2020 10:18

Instrument :
 MSVOA_U
 ClientSampleID :
 VSTD050203

Tgt Ion	Resp	Lower	Upper
97	171030		
99	61.9	43.3	80.5
83	89.6	62.7	116.5
85	58.1	40.7	75.5

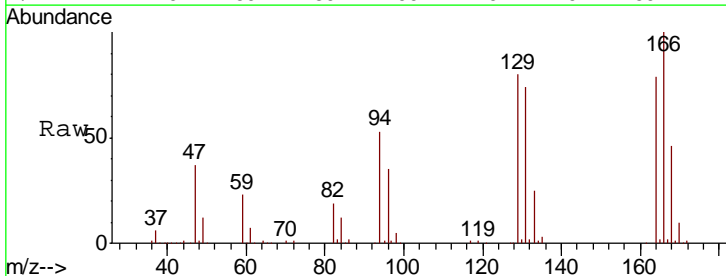


Abundance Ion 97.00 (96.70 to 97.70): VU040262.D (-2184) (-)
 Ion 99.00 (98.70 to 99.70): VU040262.D (-2184) (-)
 Ion 83.00 (82.70 to 83.70): VU040262.D (-2184) (-)
 Ion 85.00 (84.70 to 85.70): VU040262.D (-2184) (-)

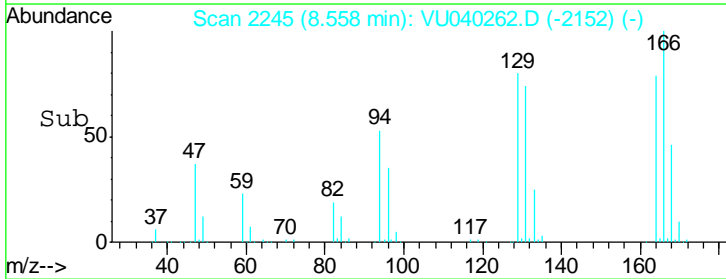
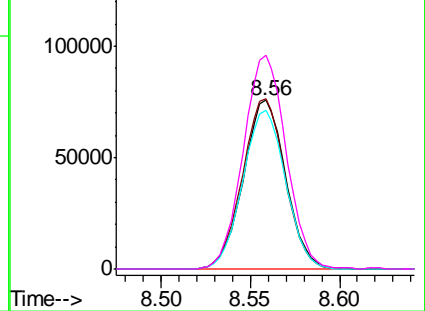


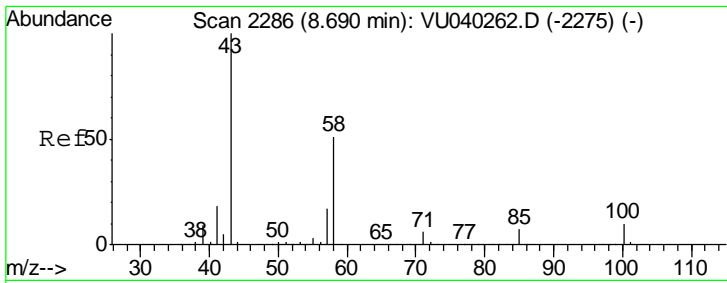
#46
 Tetrachloroethene
 Concen: 56.842 ug/L
 RT: 8.56 min Scan# 2245
 Delta R.T. 0.00 min
 Lab File: VU040262.D
 Acq: 24 Sep 2020 10:18

Tgt Ion	Resp	Lower	Upper
164	125394		
129	100.7	70.5	130.9
131	93.8	65.7	121.9
166	126.5	88.5	164.4



Abundance Ion 164.00 (163.70 to 164.70): VU040262.D (-2232) (-)
 Ion 129.00 (128.70 to 129.70): VU040262.D (-2232) (-)
 Ion 131.00 (130.70 to 131.70): VU040262.D (-2232) (-)
 Ion 166.00 (165.70 to 166.70): VU040262.D (-2232) (-)

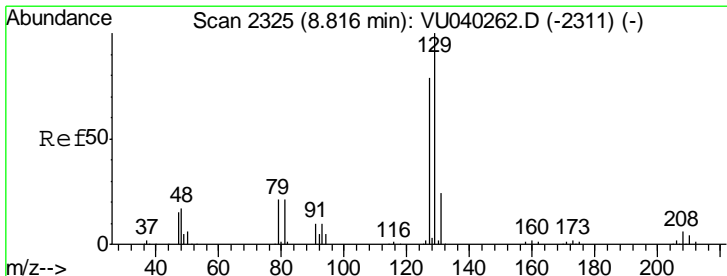
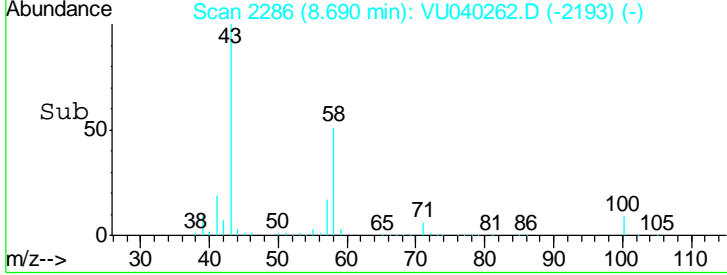
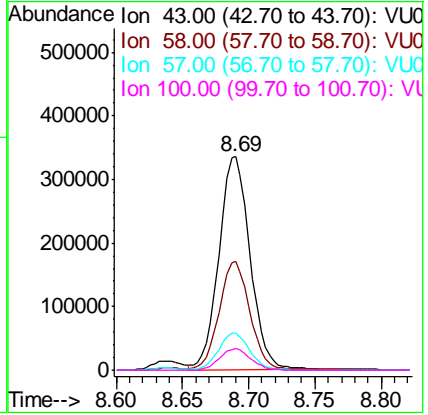
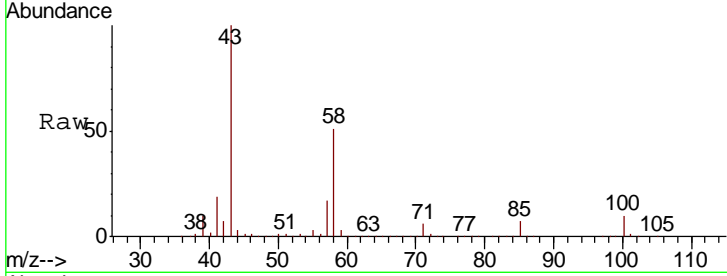




#48
 2-Hexanone
 Concen: 122.052 ug/L
 RT: 8.69 min Scan# 2286
 Delta R.T. 0.00 min
 Lab File: VU040262.D
 Acq: 24 Sep 2020 10:18

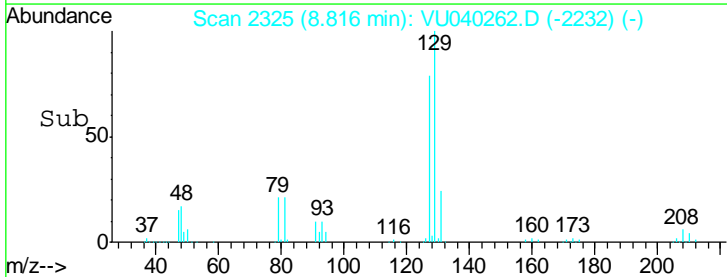
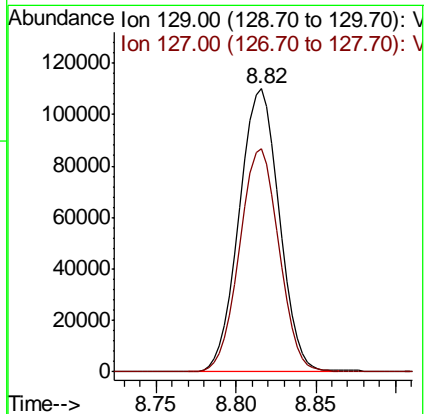
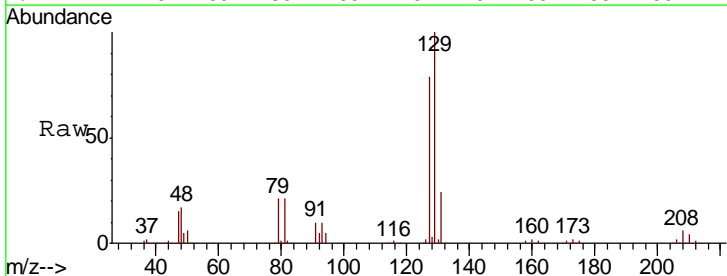
Instrument : MSVOA_U
 ClientSampleId : VSTD050203

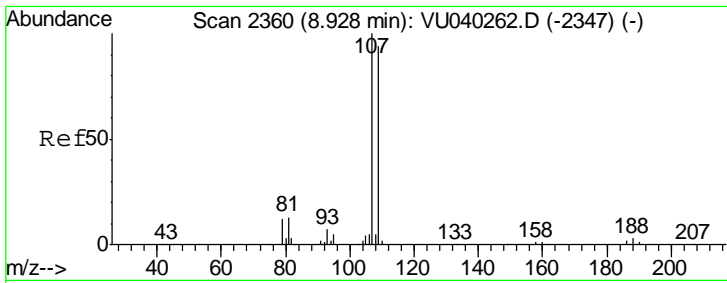
Tgt Ion	Resp	Lower	Upper
43	546788		
58	50.4	40.3	60.5
57	17.4	13.9	20.9
100	10.2	8.2	12.2



#49
 Dibromochloromethane
 Concen: 60.822 ug/L
 RT: 8.82 min Scan# 2325
 Delta R.T. 0.00 min
 Lab File: VU040262.D
 Acq: 24 Sep 2020 10:18

Tgt Ion	Resp	Lower	Upper
129	188240		
127	78.7	55.1	102.3

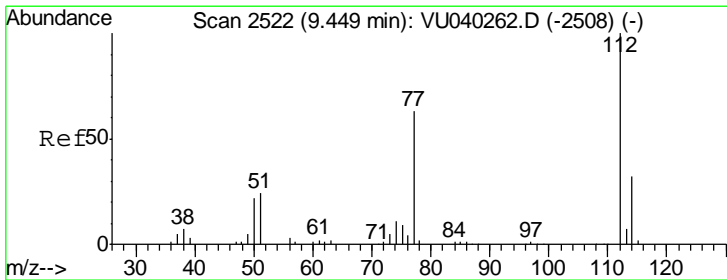
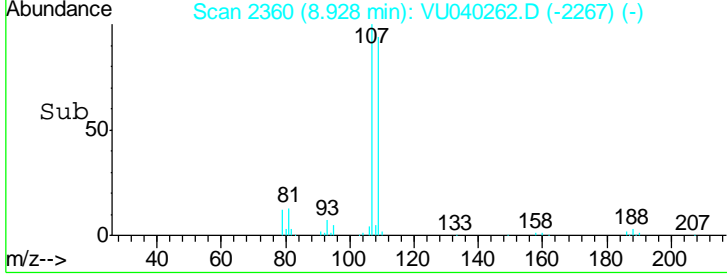
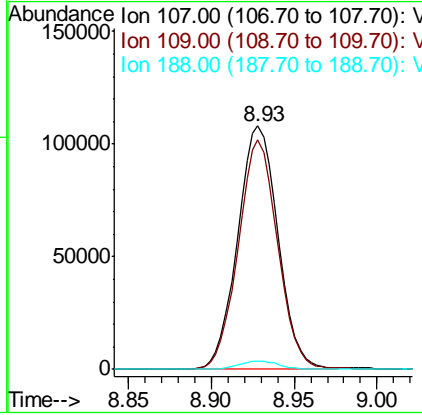
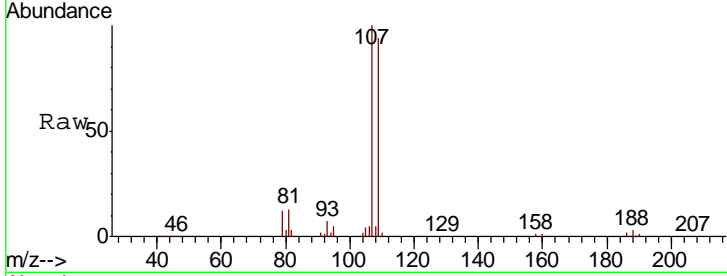




#50
 1,2-Dibromoethane
 Concen: 56.211 ug/L
 RT: 8.93 min Scan# 2360
 Delta R.T. 0.00 min
 Lab File: VU040262.D
 Acq: 24 Sep 2020 10:18

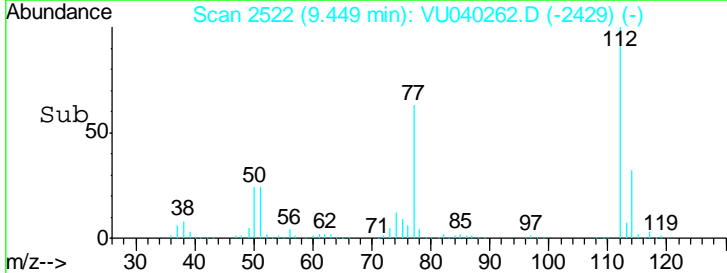
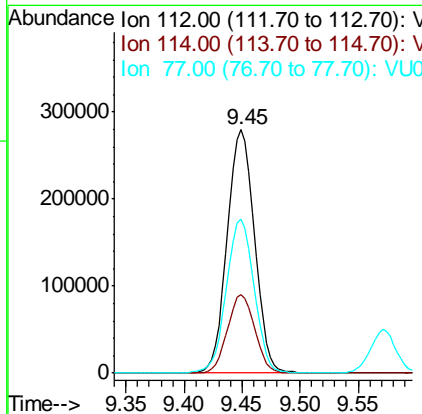
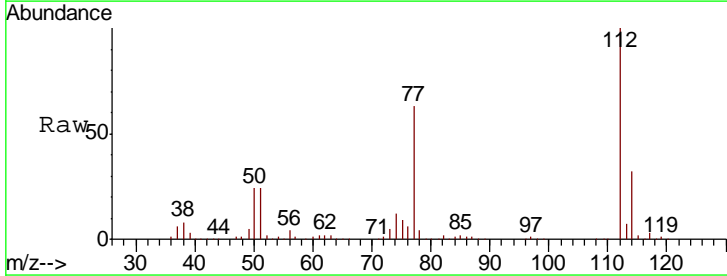
Instrument : MSVOA_U
 ClientSampleId : VSTD050203

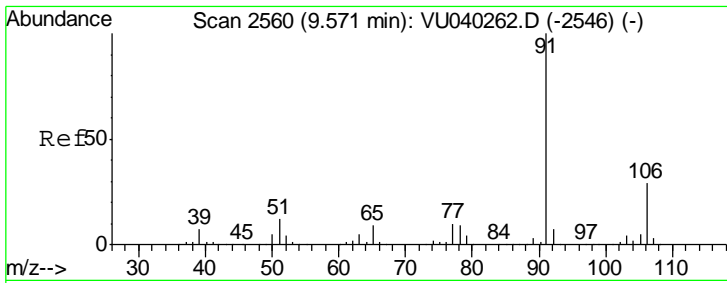
Tgt Ion	Resp	Lower	Upper
107	182924		
109	94.1	65.9	122.3
188	3.2	2.6	3.8



#51
 Chlorobenzene
 Concen: 55.491 ug/L
 RT: 9.45 min Scan# 2522
 Delta R.T. 0.00 min
 Lab File: VU040262.D
 Acq: 24 Sep 2020 10:18

Tgt Ion	Resp	Lower	Upper
112	455655		
114	32.5	22.7	42.3
77	63.4	50.7	76.1

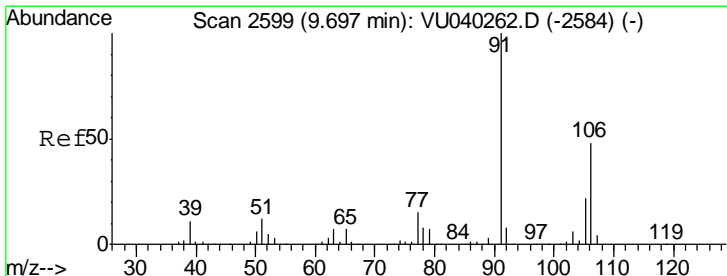
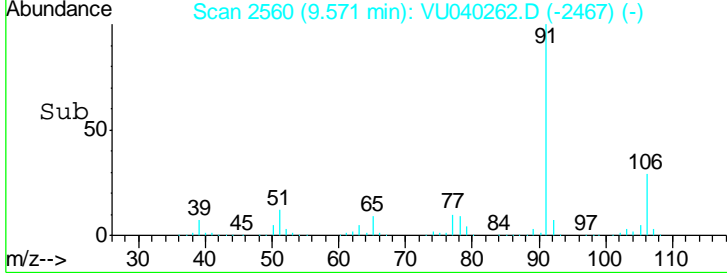
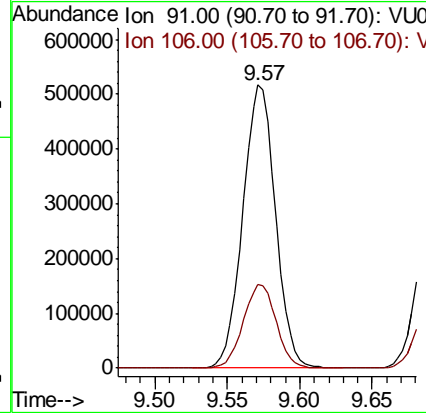
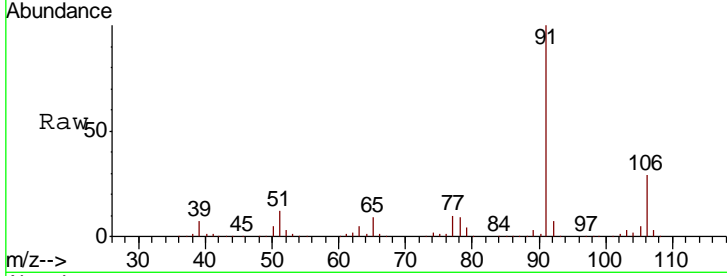




#52
 Ethylbenzene
 Concen: 54.409 ug/L
 RT: 9.57 min Scan# 2560
 Delta R.T. 0.00 min
 Lab File: VU040262.D
 Acq: 24 Sep 2020 10:18

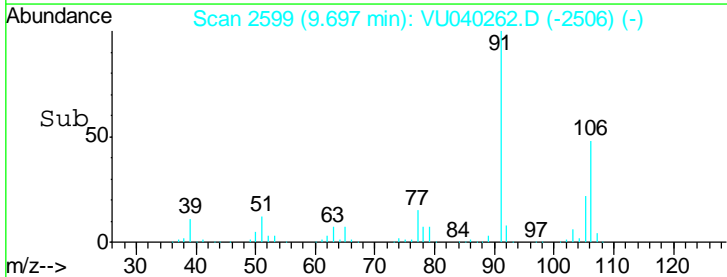
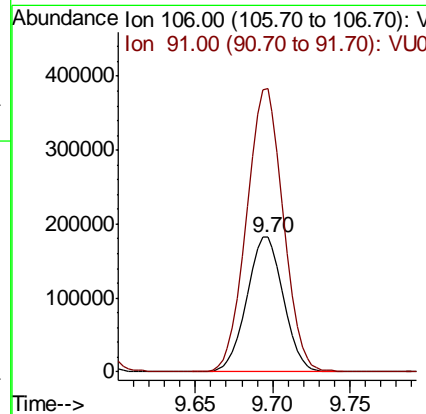
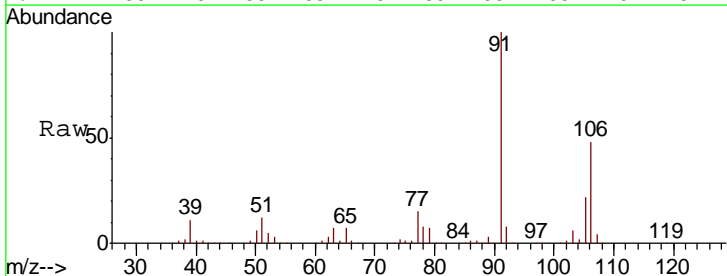
Instrument : MSVOA_U
 ClientSampleId : VSTD050203

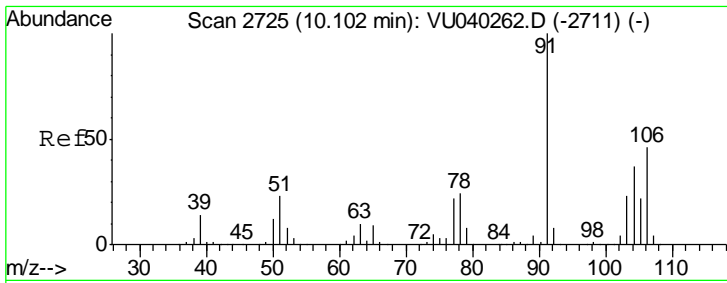
Tgt Ion: 91 Resp: 808416
 Ion Ratio Lower Upper
 91 100
 106 29.4 20.6 38.2



#53
 m,p-Xylene
 Concen: 54.869 ug/L
 RT: 9.70 min Scan# 2599
 Delta R.T. 0.00 min
 Lab File: VU040262.D
 Acq: 24 Sep 2020 10:18

Tgt Ion: 106 Resp: 300261
 Ion Ratio Lower Upper
 106 100
 91 210.2 147.1 273.3

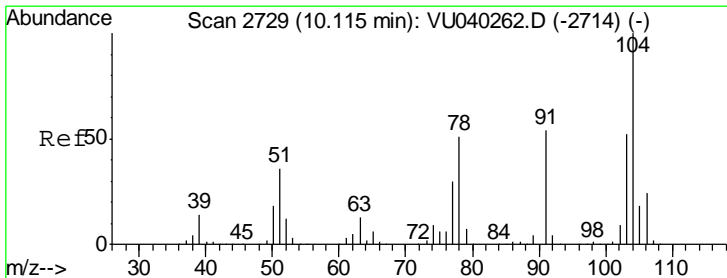
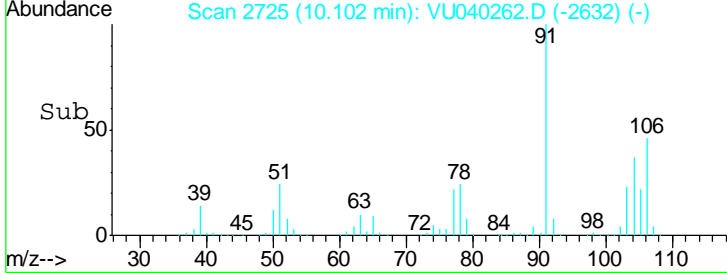
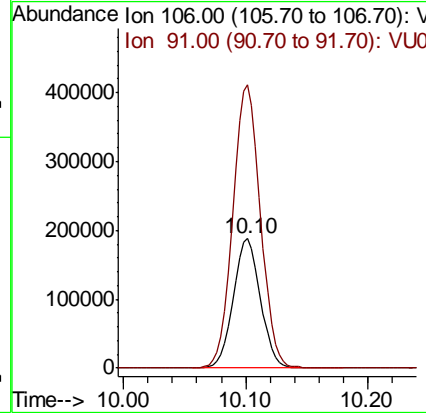
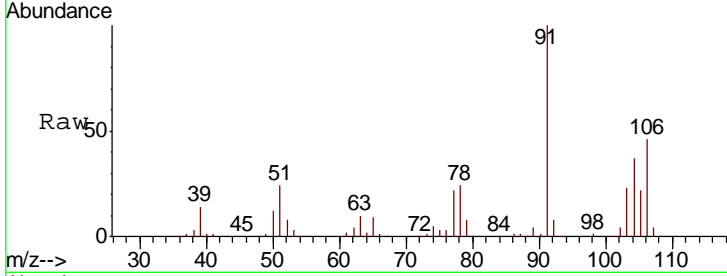




#54
 o-xylene
 Concen: 53.860 ug/L
 RT: 10.10 min Scan# 2725
 Delta R.T. 0.00 min
 Lab File: VU040262.D
 Acq: 24 Sep 2020 10:18

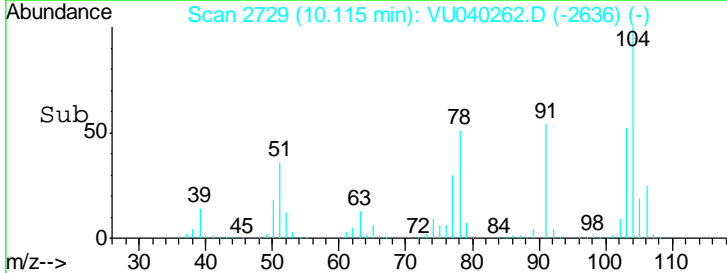
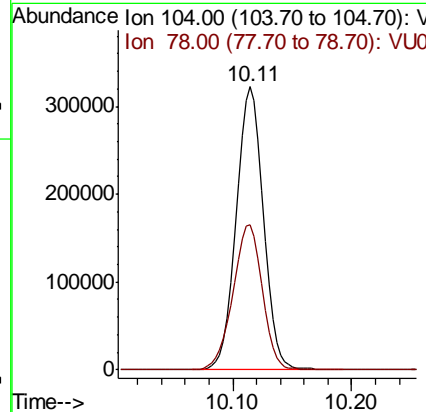
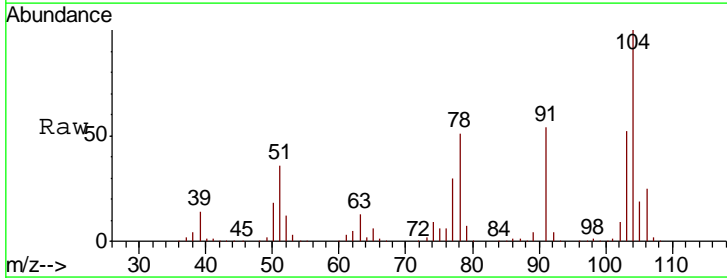
Instrument :
 MSVOA_U
 ClientSampled :
 VSTD050203

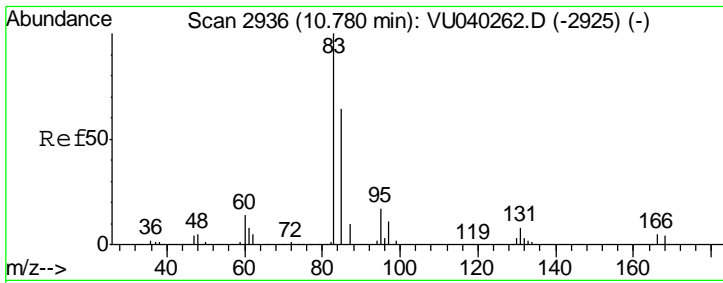
Tgt Ion:106 Resp: 292115
 Ion Ratio Lower Upper
 106 100
 91 218.3 152.8 283.8



#55
 Styrene
 Concen: 56.052 ug/L
 RT: 10.11 min Scan# 2729
 Delta R.T. 0.00 min
 Lab File: VU040262.D
 Acq: 24 Sep 2020 10:18

Tgt Ion:104 Resp: 509766
 Ion Ratio Lower Upper
 104 100
 78 51.1 35.8 66.4

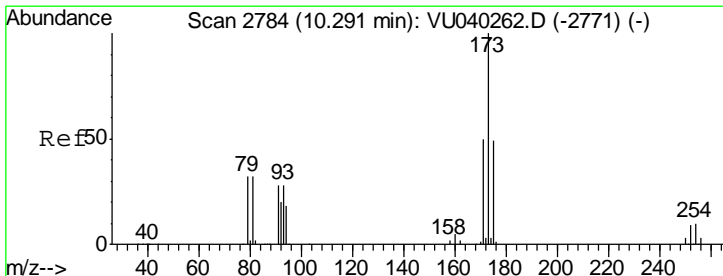
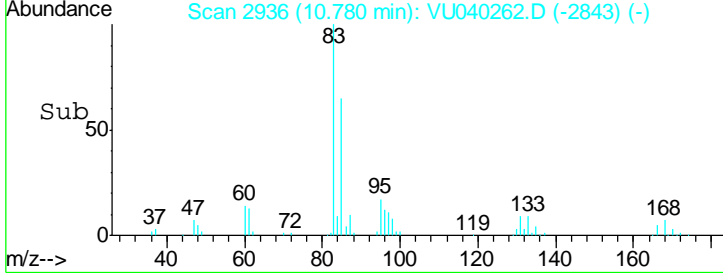
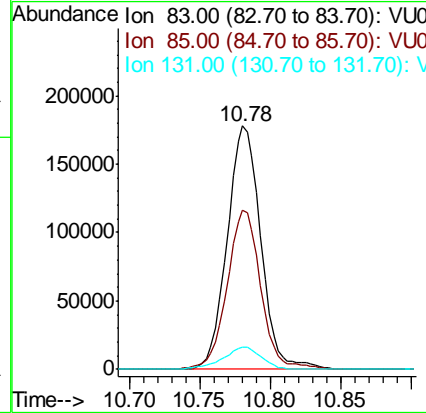
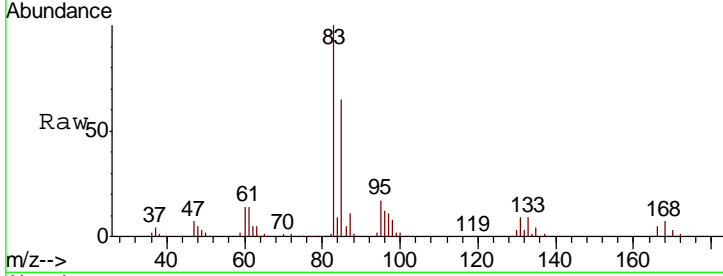




#57
 1,1,2,2-Tetrachloroethane
 Concen: 53.679 ug/L
 RT: 10.78 min Scan# 2936
 Delta R.T. 0.00 min
 Lab File: VU040262.D
 Acq: 24 Sep 2020 10:18

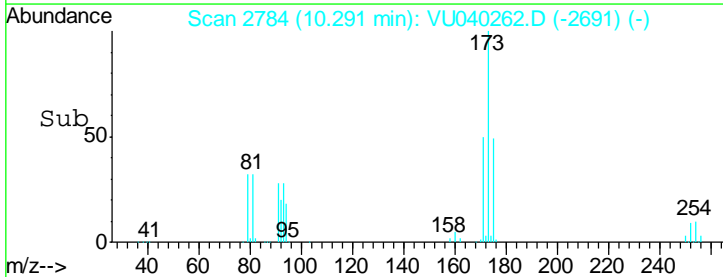
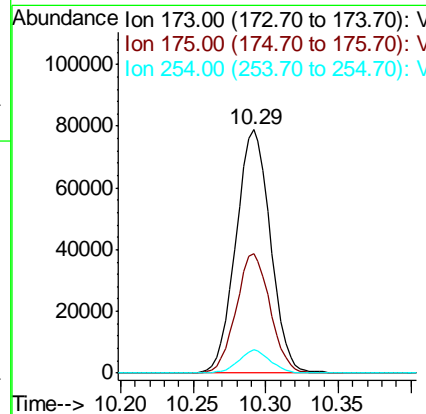
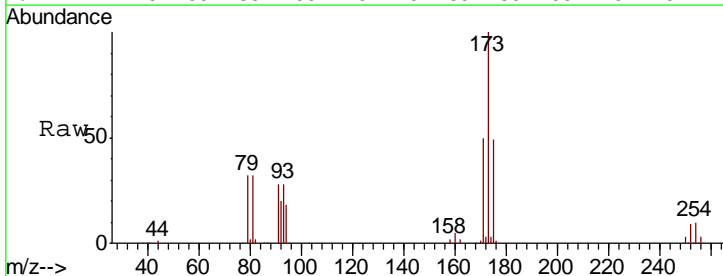
Instrument : MSVOA_U
 ClientSampled : VSTD050203

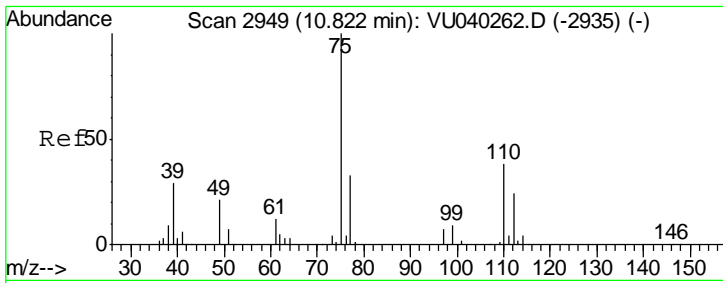
Tgt Ion	Resp	Lower	Upper
83	100		
85	65.1	45.6	84.6
131	9.2	7.4	11.0



#59
 Bromoform
 Concen: 55.430 ug/L
 RT: 10.29 min Scan# 2784
 Delta R.T. 0.00 min
 Lab File: VU040262.D
 Acq: 24 Sep 2020 10:18

Tgt Ion	Resp	Lower	Upper
173	100		
175	48.3	38.6	58.0
254	8.7	7.0	10.4

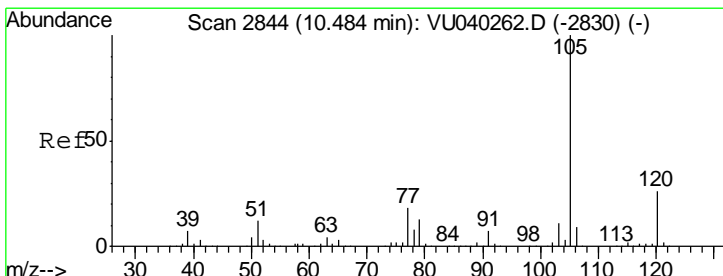
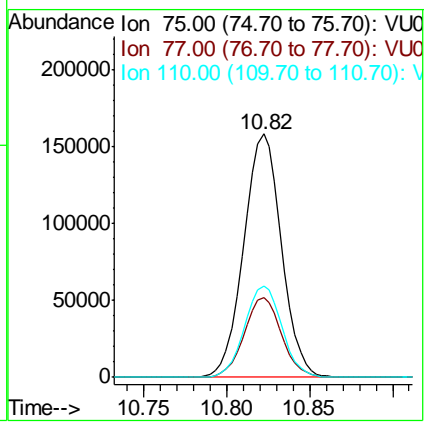
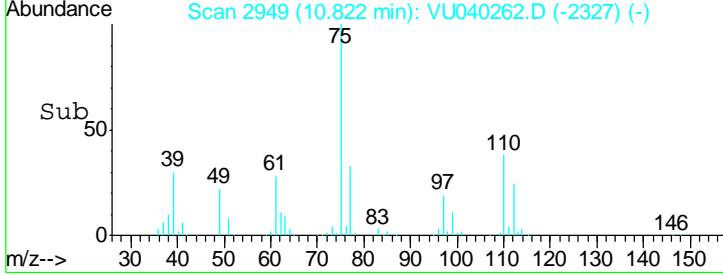
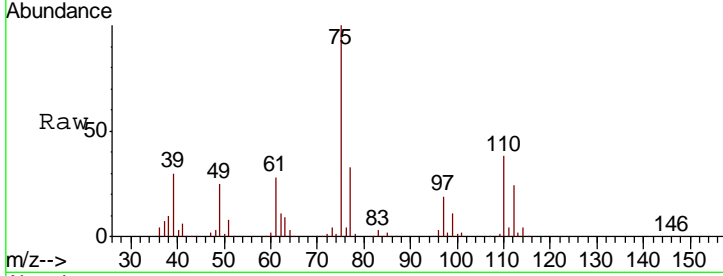




#60
 1,2,3-Trichloropropane
 Concen: 50.685 ug/L
 RT: 10.82 min Scan# 2949
 Delta R.T. 0.00 min
 Lab File: VU040262.D
 Acq: 24 Sep 2020 10:18

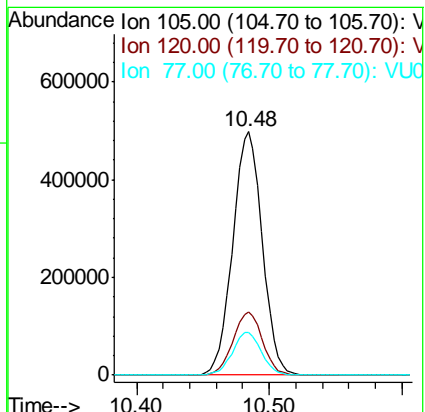
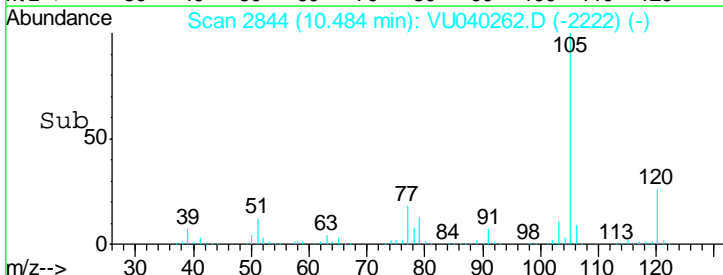
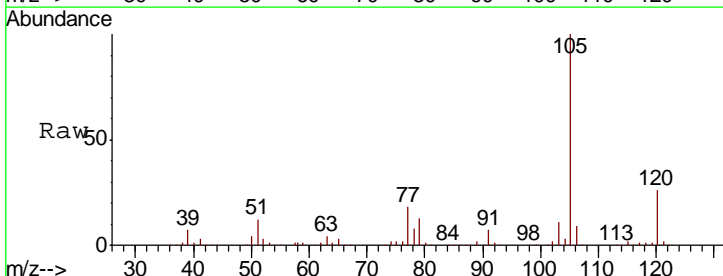
Instrument : MSVOA_U
 ClientSampled : VSTD050203

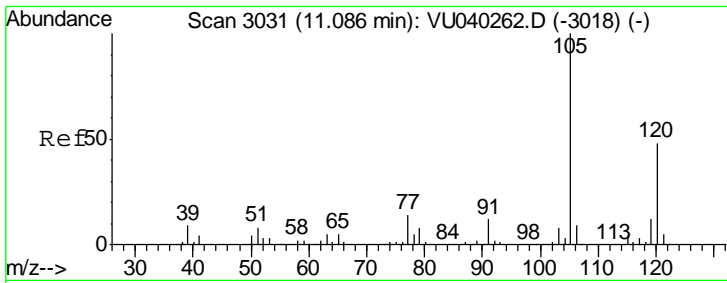
Tgt Ion	Resp	Lower	Upper
75	100		
77	32.5	26.0	39.0
110	37.3	29.8	44.8



#61
 Isopropylbenzene
 Concen: 49.720 ug/L
 RT: 10.48 min Scan# 2844
 Delta R.T. 0.00 min
 Lab File: VU040262.D
 Acq: 24 Sep 2020 10:18

Tgt Ion	Resp	Lower	Upper
105	100		
120	25.7	20.6	30.8
77	17.2	13.8	20.6

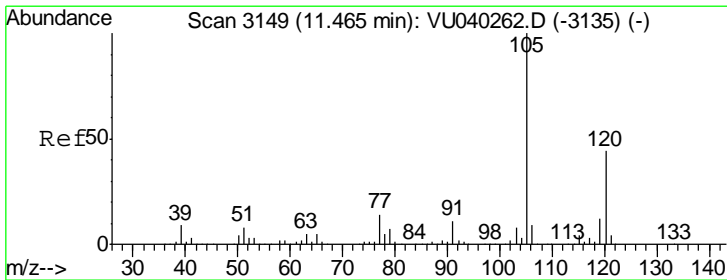
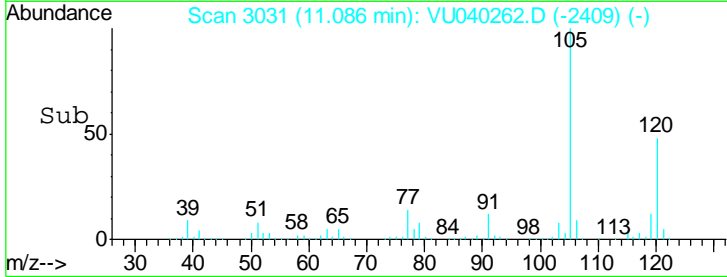
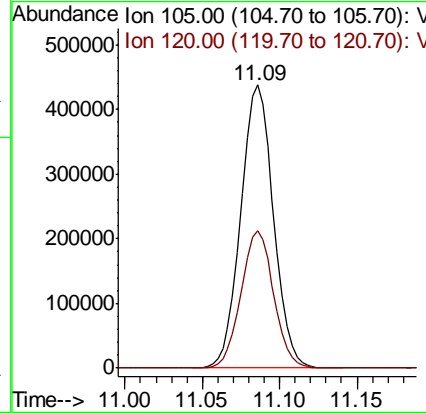
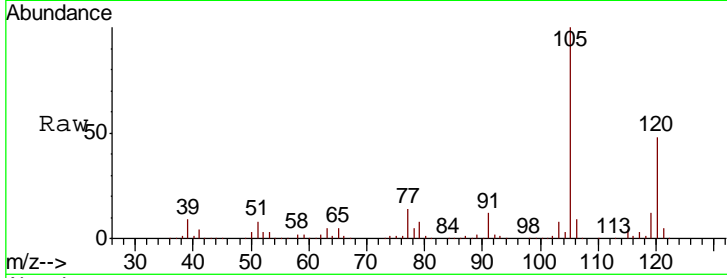




#62
 1,3,5-Trimethylbenzene
 Concen: 48.639 ug/L
 RT: 11.09 min Scan# 3031
 Delta R.T. 0.00 min
 Lab File: VU040262.D
 Acq: 24 Sep 2020 10:18

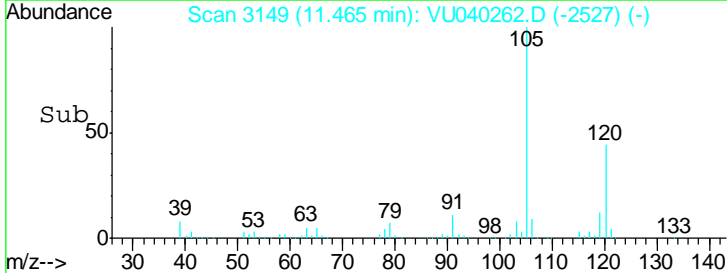
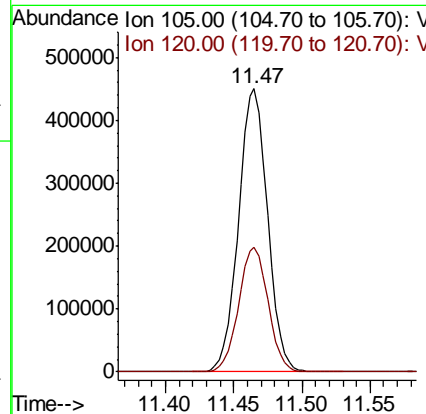
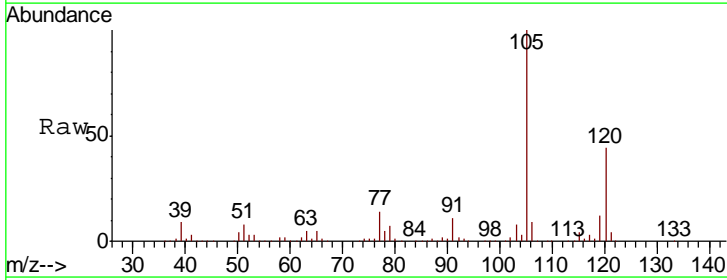
Instrument :
 MSVOA_U
 ClientSampleId :
 VSTD050203

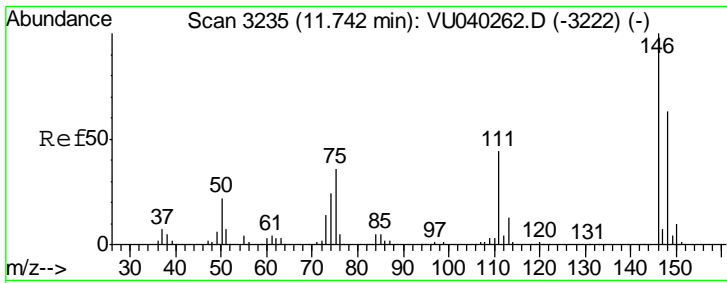
Tgt Ion	Resp	Lower	Upper
105	100		
120	48.4	38.7	58.1



#63
 1,2,4-Trimethylbenzene
 Concen: 50.120 ug/L
 RT: 11.47 min Scan# 3149
 Delta R.T. 0.00 min
 Lab File: VU040262.D
 Acq: 24 Sep 2020 10:18

Tgt Ion	Resp	Lower	Upper
105	100		
120	44.7	35.8	53.6

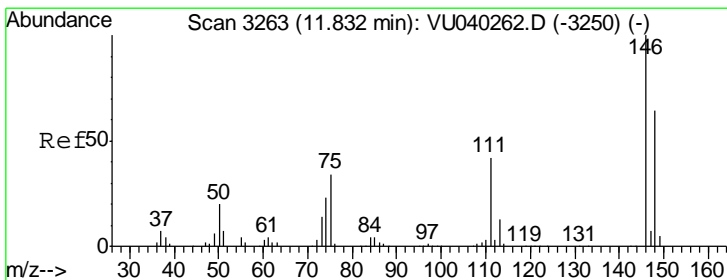
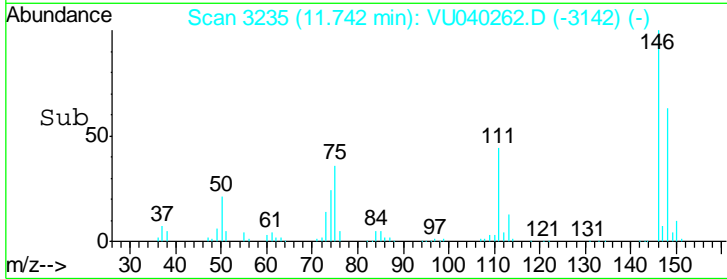
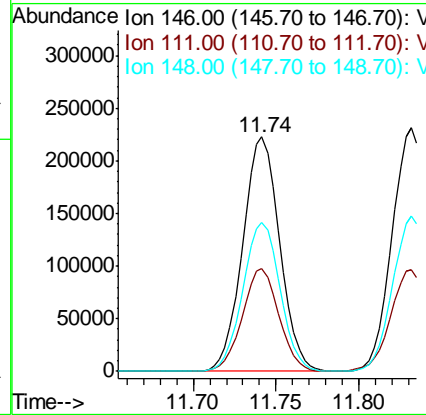
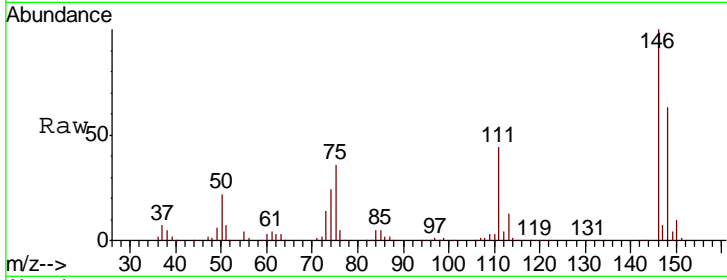




#64
 1,3-Dichlorobenzene
 Concen: 52.090 ug/L
 RT: 11.74 min Scan# 3235
 Delta R.T. 0.00 min
 Lab File: VU040262.D
 Acq: 24 Sep 2020 10:18

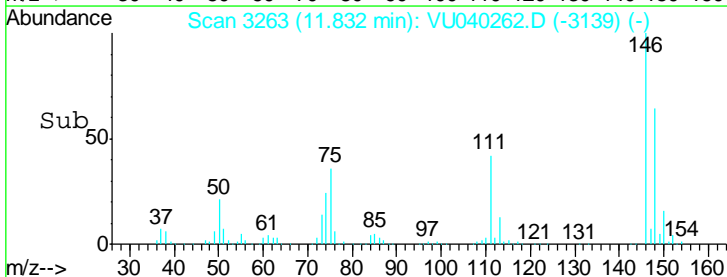
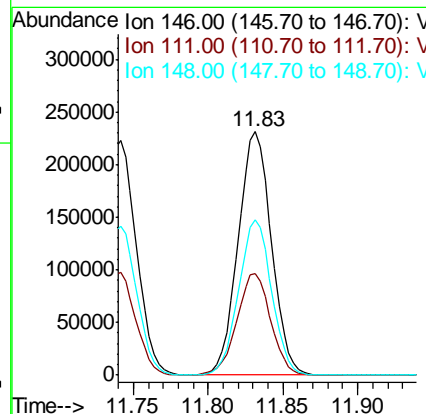
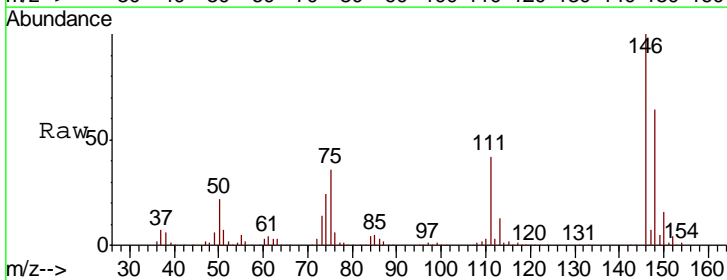
Instrument :
 MSVOA_U
 ClientSampled :
 VSTD050203

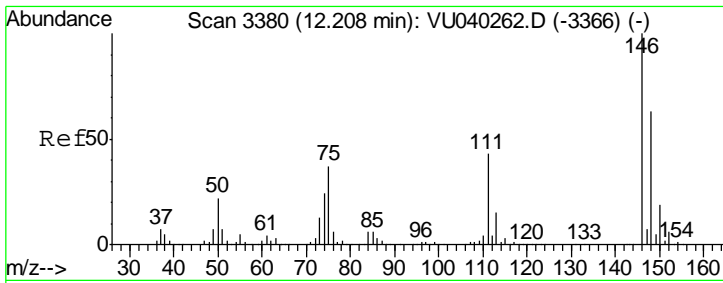
Tgt Ion	Resp	Lower	Upper
146	100		
111	43.7	30.6	56.8
148	63.5	44.4	82.5



#65
 1,4-Dichlorobenzene
 Concen: 53.481 ug/L
 RT: 11.83 min Scan# 3263
 Delta R.T. 0.00 min
 Lab File: VU040262.D
 Acq: 24 Sep 2020 10:18

Tgt Ion	Resp	Lower	Upper
146	100		
111	42.0	29.4	54.6
148	63.9	44.7	83.1

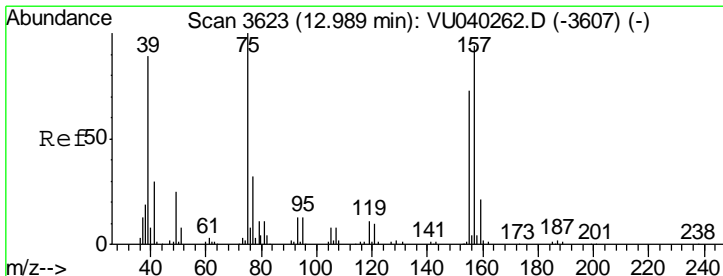
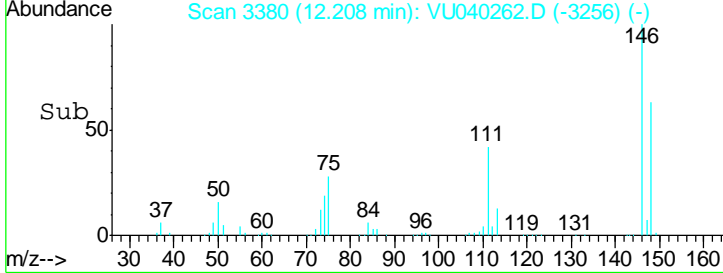
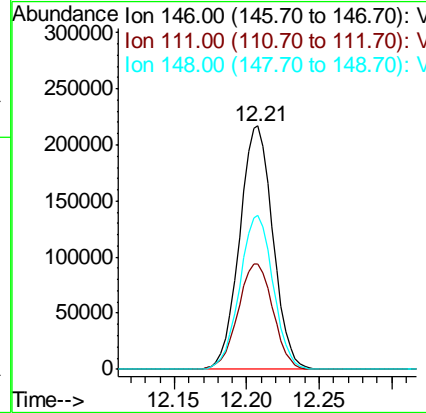
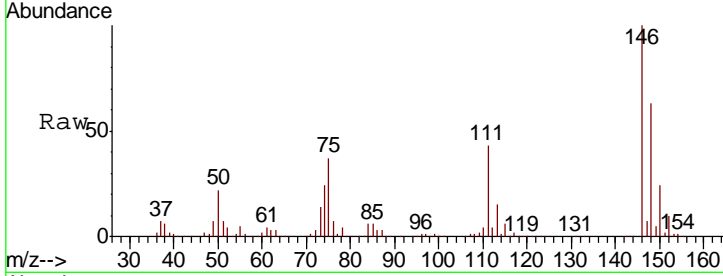




#67
 1,2-Dichlorobenzene
 Concen: 51.656 ug/L
 RT: 12.21 min Scan# 3380
 Delta R.T. 0.00 min
 Lab File: VU040262.D
 Acq: 24 Sep 2020 10:18

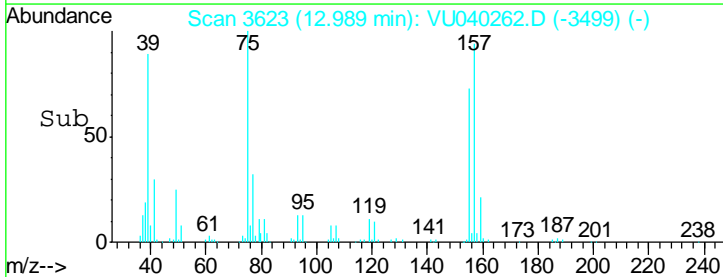
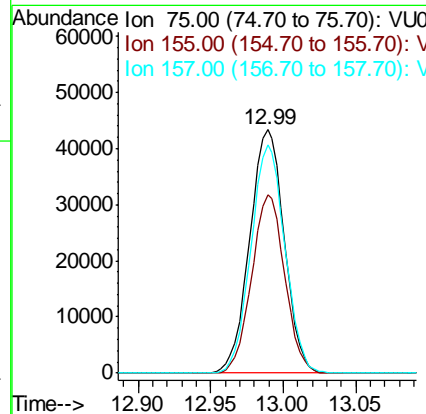
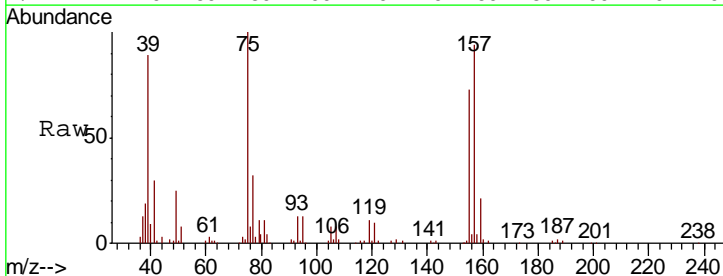
Instrument :
 MSVOA_U
 ClientSampled :
 VSTD050203

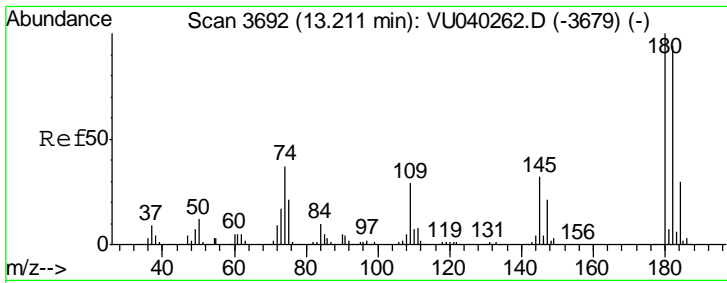
Tgt Ion	Resp	Lower	Upper
146	100		
111	43.1	34.5	51.7
148	63.1	50.5	75.7



#68
 1,2-Dibromo-3-chloropropane
 Concen: 51.115 ug/L
 RT: 12.99 min Scan# 3623
 Delta R.T. 0.00 min
 Lab File: VU040262.D
 Acq: 24 Sep 2020 10:18

Tgt Ion	Resp	Lower	Upper
75	100		
155	73.5	58.8	88.2
157	93.9	75.1	112.7

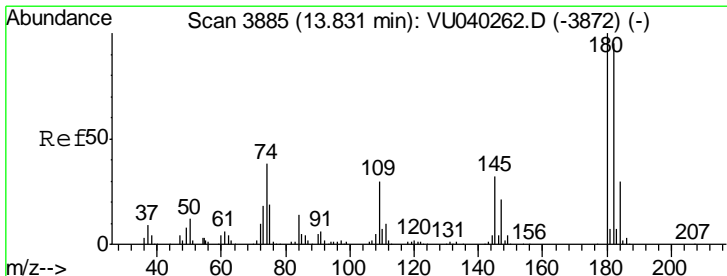
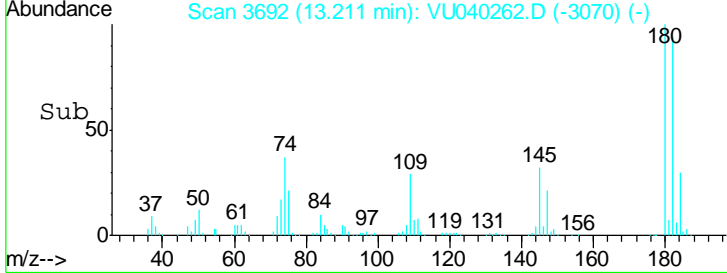
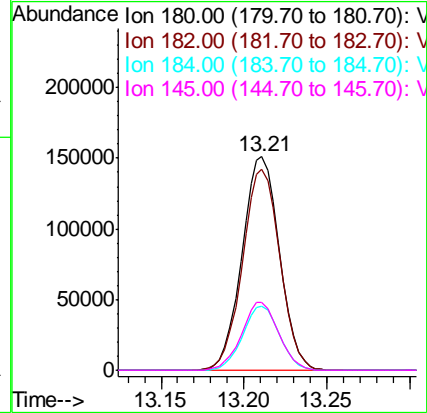
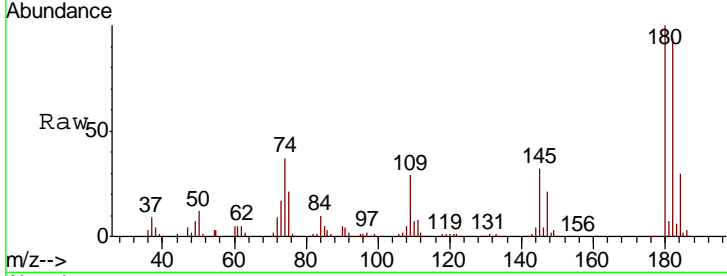




#69
 1,3,5-Trichlorobenzene
 Concen: 51.770 ug/L
 RT: 13.21 min Scan# 3692
 Delta R.T. 0.00 min
 Lab File: VU040262.D
 Acq: 24 Sep 2020 10:18

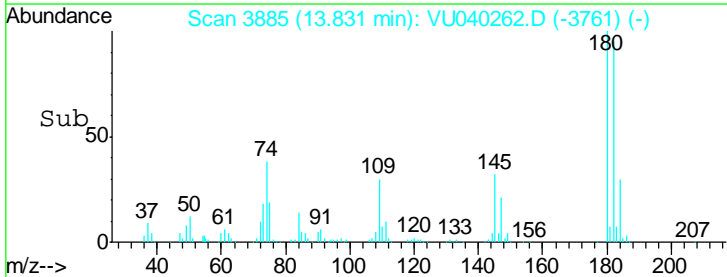
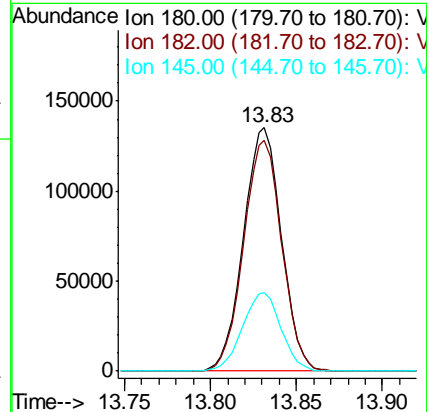
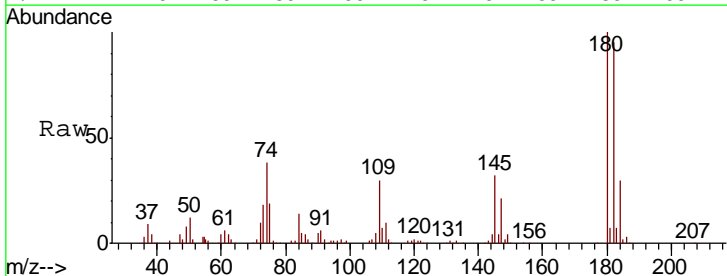
Instrument :
 MSVOA_U
 ClientSampled :
 VSTD050203

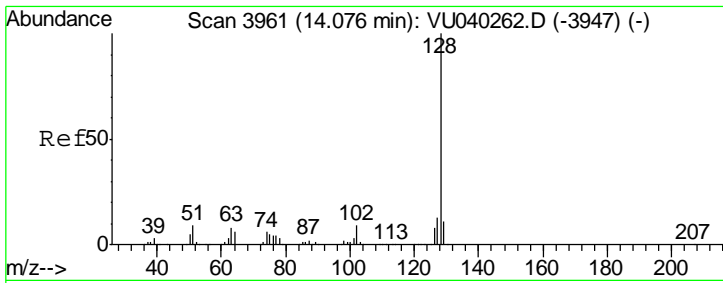
Tgt Ion	Resp	Lower	Upper
180	100		
182	94.2	75.4	113.0
184	29.6	23.7	35.5
145	31.6	25.3	37.9



#70
 1,2,4-trichlorobenzene
 Concen: 53.973 ug/L
 RT: 13.83 min Scan# 3885
 Delta R.T. 0.00 min
 Lab File: VU040262.D
 Acq: 24 Sep 2020 10:18

Tgt Ion	Resp	Lower	Upper
180	100		
182	95.4	76.3	114.5
145	32.5	26.0	39.0

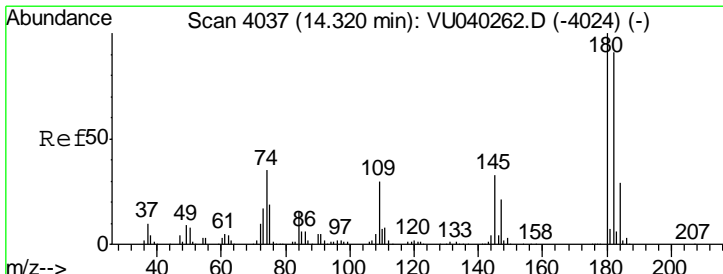
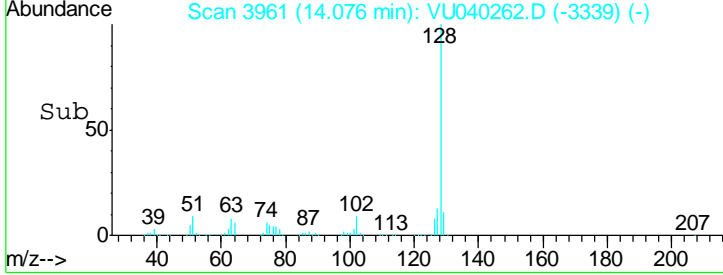
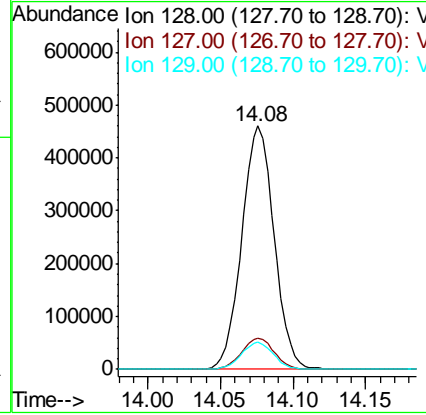
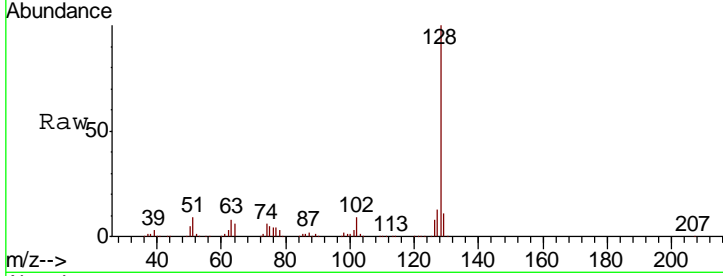




#71
 Naphthalene
 Concen: 53.527 ug/L
 RT: 14.08 min Scan# 3961
 Delta R.T. 0.00 min
 Lab File: VU040262.D
 Acq: 24 Sep 2020 10:18

Instrument :
 MSVOA_U
 ClientSampled :
 VSTD050203

Tgt Ion	Resp	Lower	Upper
128	714219		
127	12.9	10.3	15.5
129	11.0	8.8	13.2



#72
 1,2,3-Trichlorobenzene
 Concen: 56.115 ug/L
 RT: 14.32 min Scan# 4037
 Delta R.T. 0.00 min
 Lab File: VU040262.D
 Acq: 24 Sep 2020 10:18

Tgt Ion	Resp	Lower	Upper
180	217838		
182	92.8	74.2	111.4
145	34.7	27.8	41.6

