

Data Path : Z:\VOASRV\HPCHEM1\MSVOA U\DATA\VU092519\
 Data File : VU034825.D
 Acq On : 26 Sep 2019 00:15
 Operator : JC/SP
 Sample : K4983-15
 Misc : 5.0mL/MSVOA U/WATER
 ALS Vial : 36 Sample Multiplier: 1

Instrument :
 MSVOA_U
Client Sampled :
 BFDJ6

Manual Integrations
APPROVED
 MMDadoda
 9/26/2019 1:06:54 PM

Quant Time: Sep 26 09:25:53 2019
 Quant Method : Z:\VOASRV\HPCHEM1\MSVOA_U\METHOD\SOMULM091919WMA.M
 Quant Title : VOC Analysis
 QLast Update : Thu Sep 26 06:56:48 2019
 Response via : Initial Calibration

Internal Standards	R.T.	QIon	Response	Conc	Units	Dev(Min)
1) 1,4-Difluorobenzene	5.86	114	435672	50.00	ug/L	0.00
28) Chlorobenzene-d5	9.07	117	409109	50.00	ug/L	0.00
60) 1,4-Dichlorobenzene-d4	11.46	152	189567	50.00	ug/L	0.00

System Monitoring Compounds

4) Vinyl Chloride-d3	1.39	65	185168	41.52	ug/L	0.00
Spiked Amount	50.000	Range	60 - 135	Recovery	=	83.04%
7) Chloroethane-d5	1.67	69	164848	47.82	ug/L	0.00
Spiked Amount	50.000	Range	70 - 130	Recovery	=	95.64%
11) 1,1-Dichloroethene-d2	2.26	63	255207	33.79	ug/L	0.00
Spiked Amount	50.000	Range	60 - 125	Recovery	=	67.58%
21) 2-Butanone-d5	4.15	46	418620	122.46	ug/L	0.00
Spiked Amount	100.000	Range	40 - 130	Recovery	=	122.46%
24) Chloroform-d	4.62	84	328397	50.65	ug/L	0.00
Spiked Amount	50.000	Range	70 - 125	Recovery	=	101.30%
26) 1,2-Dichloroethane-d4	5.29	65	224997	47.20	ug/L	0.00
Spiked Amount	50.000	Range	70 - 125	Recovery	=	94.40%
32) Benzene-d6	5.32	84	673686	53.13	ug/L	0.00
Spiked Amount	50.000	Range	70 - 125	Recovery	=	106.26%
36) 1,2-Dichloropropane-d6	6.31	67	245728	55.44	ug/L	0.00
Spiked Amount	50.000	Range	70 - 120	Recovery	=	110.88%
41) Toluene-d8	7.54	98	660330	54.74	ug/L	0.00
Spiked Amount	50.000	Range	80 - 120	Recovery	=	109.48%
43) trans-1,3-Dichloropropene-	7.83	79	104866	49.40	ug/L	0.00
Spiked Amount	50.000	Range	60 - 125	Recovery	=	98.80%
47) 2-Hexanone-d5	8.29	63	290058	130.30	ug/L	0.00
Spiked Amount	100.000	Range	45 - 130	Recovery	=	130.30%#
57) 1,1,2,2-Tetrachloroethane-	10.41	84	335343	54.53	ug/L	0.00
Spiked Amount	50.000	Range	65 - 120	Recovery	=	109.06%
64) 1,2-Dichlorobenzene-d4	11.84	152	234920	59.10	ug/L	0.00
Spiked Amount	50.000	Range	80 - 120	Recovery	=	118.20%

Target Compounds

Target Compounds	R.T.	QIon	Response	Conc	Units	Ovalue
13) Acetone	2.31	43	108259	27.226	ug/L	95
15) Methyl Acetate	2.60	43	6794m	1.279	ug/L	
16) Methylene chloride	2.68	84	3286724	910.273	ug/L	96
22) 2-Butanone	4.25	43	36532	7.723	ug/L	91
42) Toluene	7.62	91	37051	2.416	ug/L	94
52) Ethylbenzene	9.23	91	43098	2.496	ug/L	94
53) m,p-Xylene	9.35	106	32264	5.275	ug/L	93
54) o-xylene	9.76	106	51325	8.484	ug/L	98
56) Isopropylbenzene	10.14	105	17983	1.102	ug/L	95
65) 1,2-Dichlorobenzene	11.86	146	21274	3.207	ug/L	98

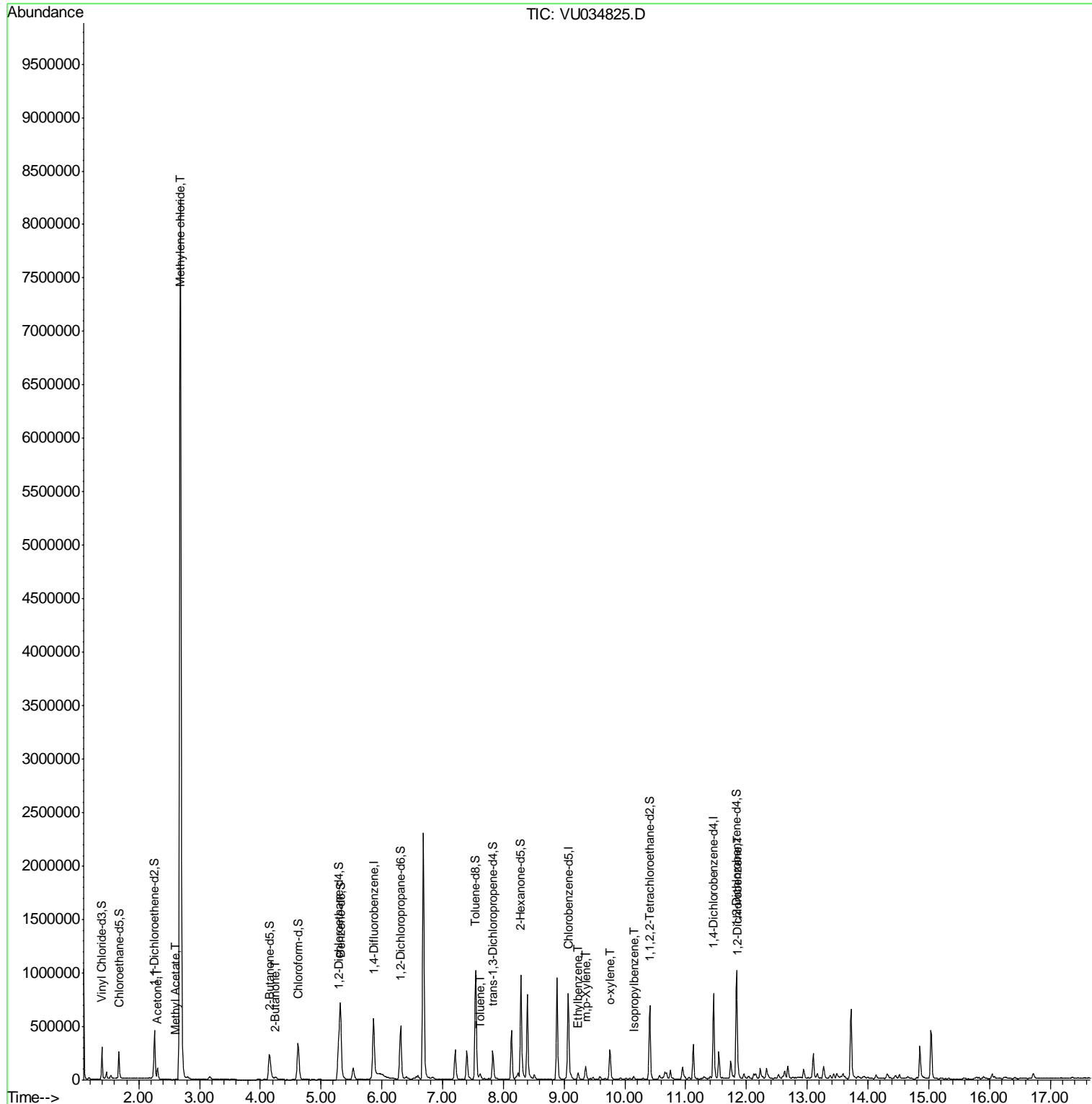
(#) = qualifier out of range (m) = manual integration (+) = signals summed

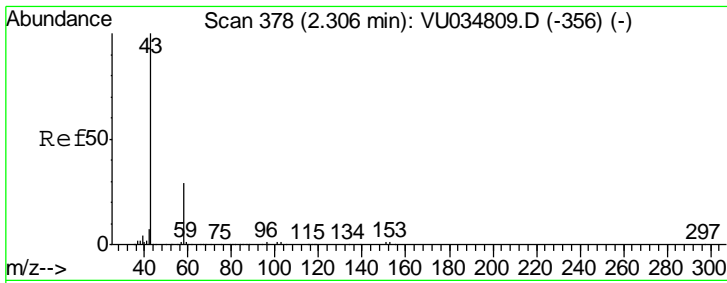
Data Path : Z:\VOASRV\HPCHEM1\MSVOA U\DATA\VU092519\
 Data File : VU034825.D
 Acq On : 26 Sep 2019 00:15
 Operator : JC/SP
 Sample : K4983-15
 Misc : 5.0mL/MSVOA U/WATER
 ALS Vial : 36 Sample Multiplier: 1

Instrument :
 MSVOA_U
 Client Sampled :
 BFDJ6

Manual Integrations
APPROVED
 MMDadoda
 9/26/2019 1:06:54 PM

Quant Time: Sep 26 09:25:53 2019
 Quant Method : Z:\VOASRV\HPCHEM1\MSVOA_U\METHOD\SOMULM091919WMA.M
 Quant Title : VOC Analysis
 QLast Update : Thu Sep 26 06:56:48 2019
 Response via : Initial Calibration





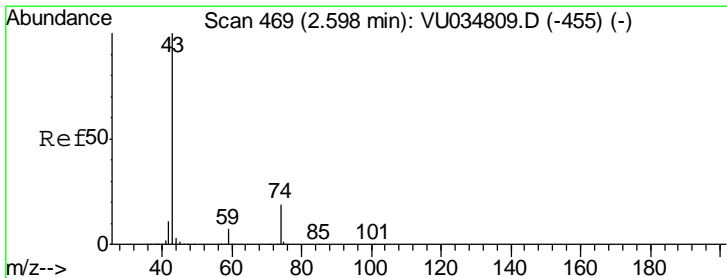
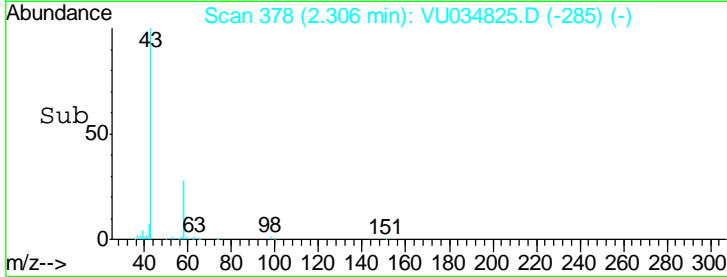
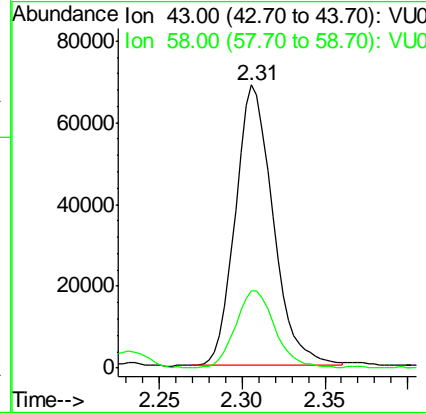
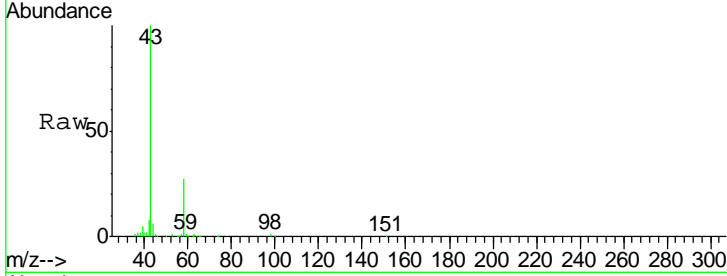
#13
 Acetone
 Concen: 27.226 ug/L
 RT: 2.31 min Scan# 378
 Delta R.T. 0.00 min
 Lab File: VU034825.D
 Acq: 26 Sep 2019 00:15

Instrument :
 MSVOA_U
 ClientSampled :
 BFDJ6

Tgt Ion	Ratio	Lower	Upper
43	100		
58	29.3	0.0	53.4

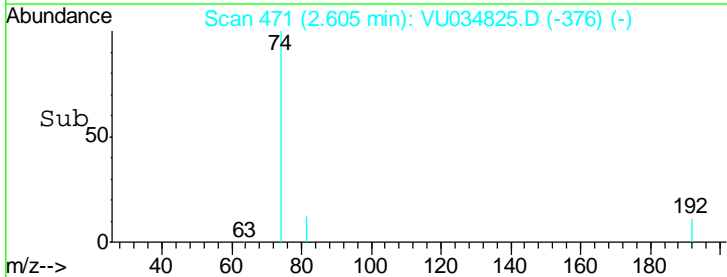
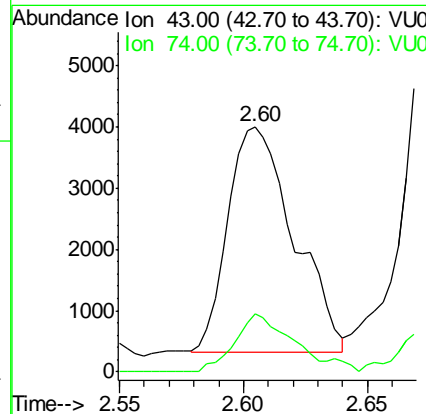
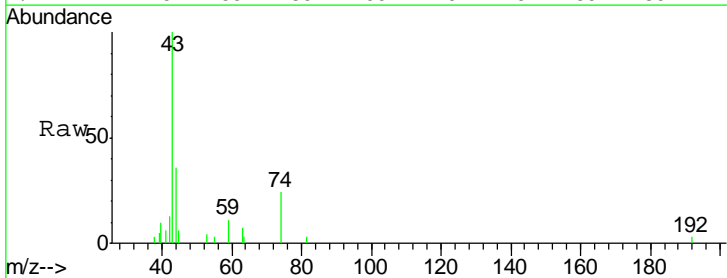
Manual Integrations
 APPROVED

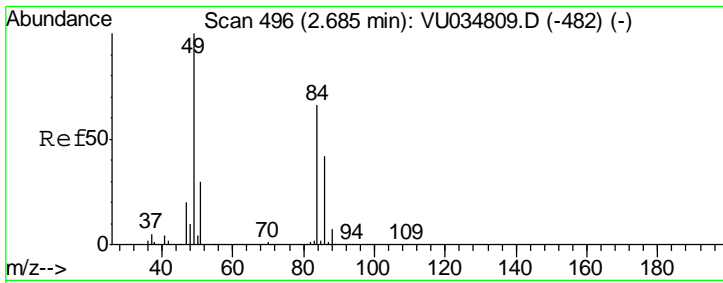
MMDadoda
 9/26/2019 1:06:54 PM



#15
 Methyl Acetate
 Concen: 1.279 ug/L m
 RT: 2.60 min Scan# 471
 Delta R.T. 0.01 min
 Lab File: VU034825.D
 Acq: 26 Sep 2019 00:15

Tgt Ion	Ratio	Lower	Upper
43	100		
74	43.5	14.4	21.6#





#16
 Methylene chloride
 Concen: 910.273 ug/L
 RT: 2.68 min Scan# 496
 Delta R.T. 0.00 min
 Lab File: VU034825.D
 Acq: 26 Sep 2019 00:15

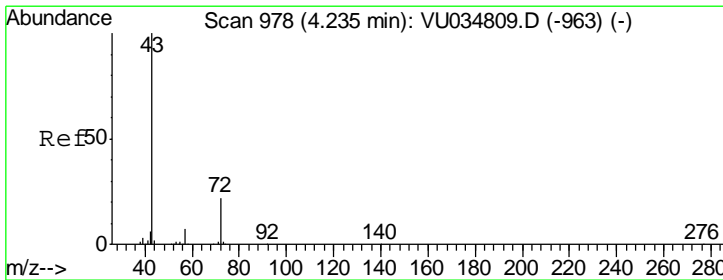
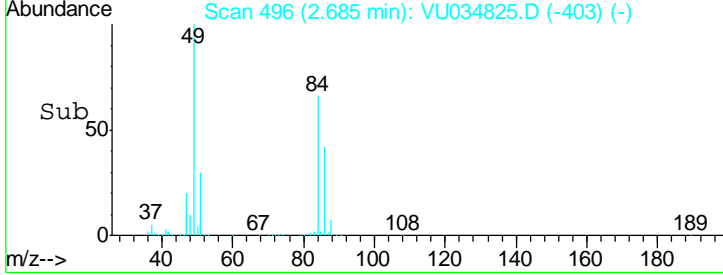
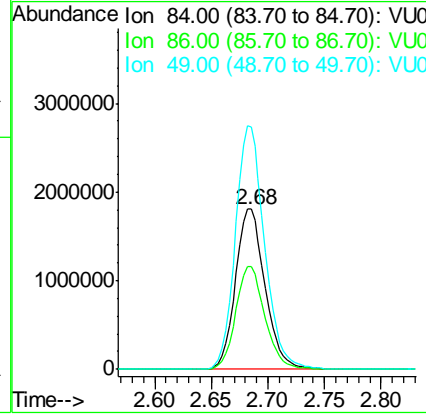
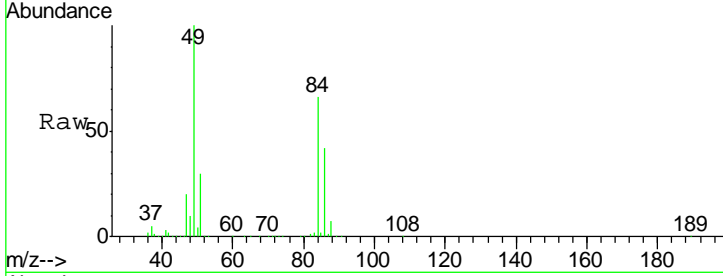
Instrument :
 MSVOA_U
ClientSampled :
 BFDJ6

Tot Ion: 84 Resp: 3286724

Ion	Ratio	Lower	Upper
84	100		
86	64.2	43.0	80.0
49	151.3	109.7	203.7

Manual Integrations
APPROVED

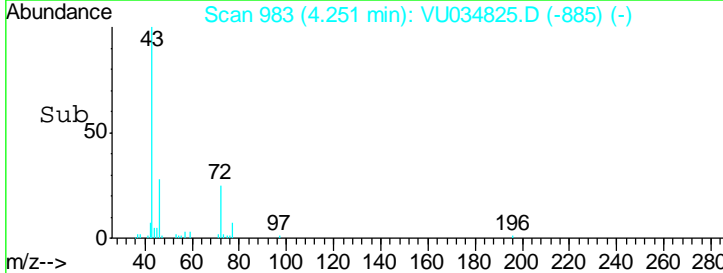
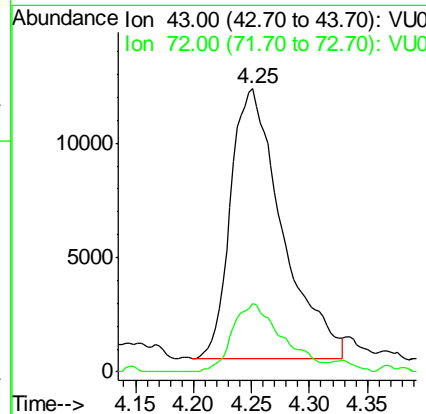
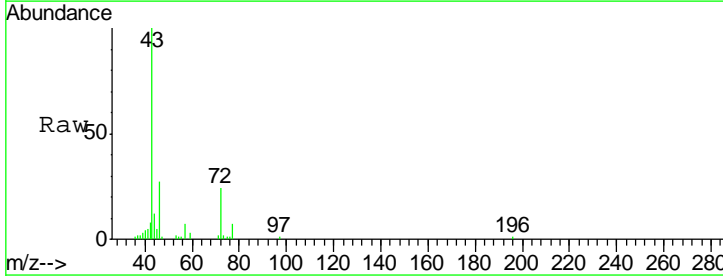
MMDadoda
 9/26/2019 1:06:54 PM

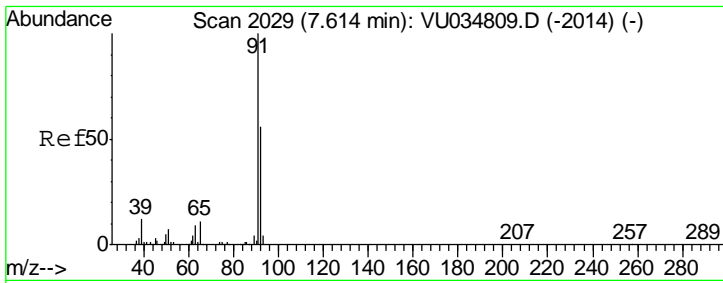


#22
 2-Butanone
 Concen: 7.723 ug/L
 RT: 4.25 min Scan# 983
 Delta R.T. 0.02 min
 Lab File: VU034825.D
 Acq: 26 Sep 2019 00:15

Tgt Ion: 43 Resp: 36532

Ion	Ratio	Lower	Upper
43	100		
72	24.7	10.2	30.6



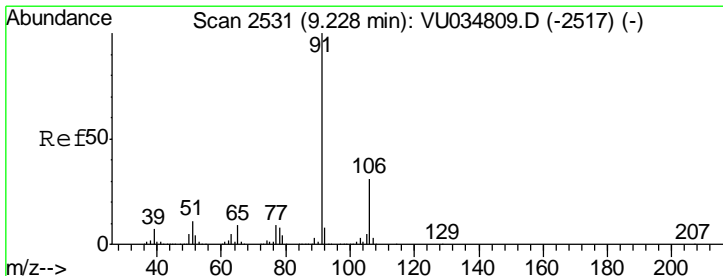
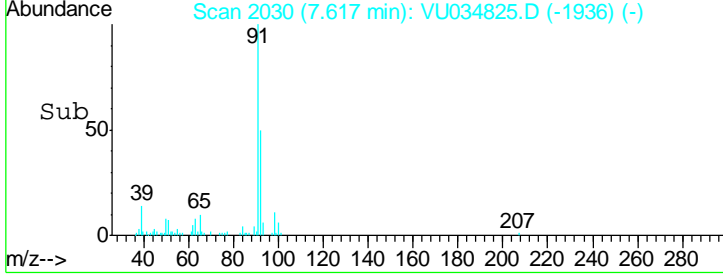
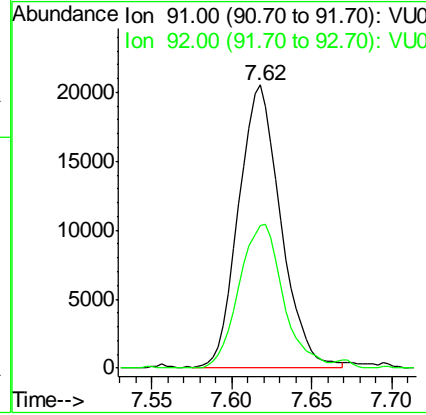
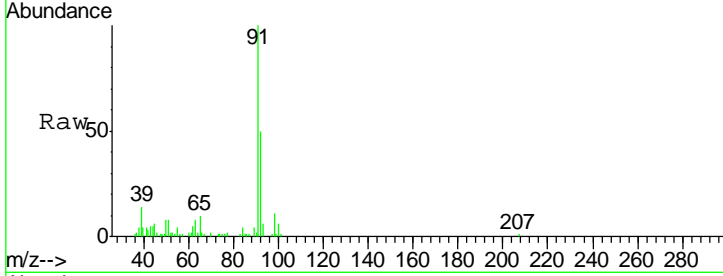


#42
 Toluene
 Concen: 2.416 ug/L
 RT: 7.62 min Scan# 2030
 Delta R.T. 0.00 min
 Lab File: VU034825.D
 Acq: 26 Sep 2019 00:15

Instrument :
 MSVOA_U
ClientSampled :
 BFDJ6

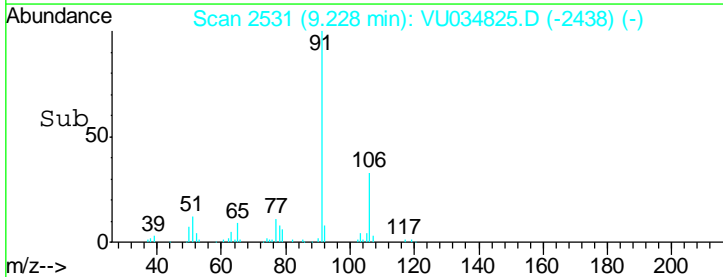
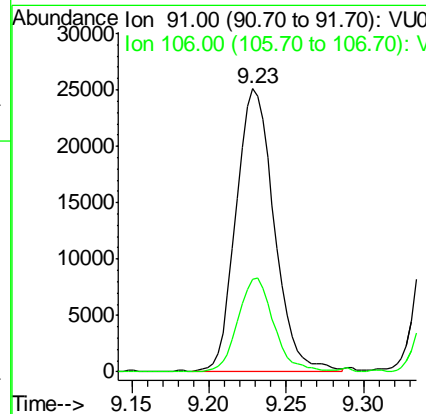
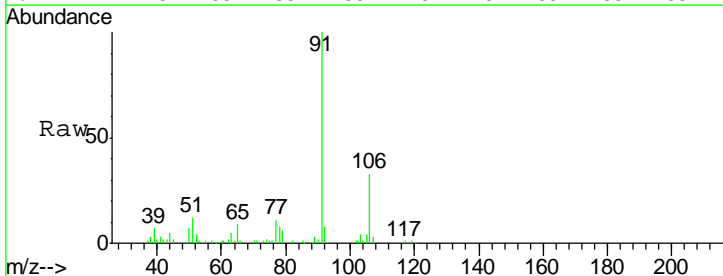
Tgt Ion	Resp	Lower	Upper
91	37051		
91	100		
92	50.4	38.2	71.0

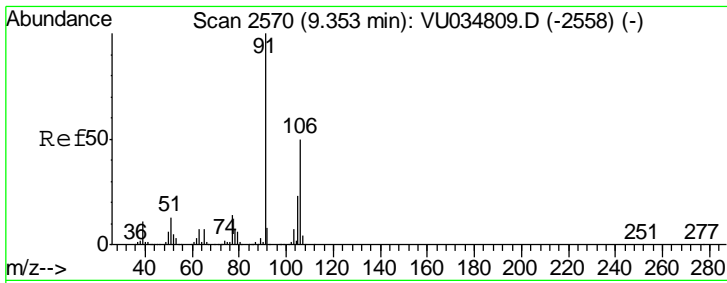
Manual Integrations
APPROVED
 MMDadoda
 9/26/2019 1:06:54 PM



#52
 Ethylbenzene
 Concen: 2.496 ug/L
 RT: 9.23 min Scan# 2531
 Delta R.T. 0.00 min
 Lab File: VU034825.D
 Acq: 26 Sep 2019 00:15

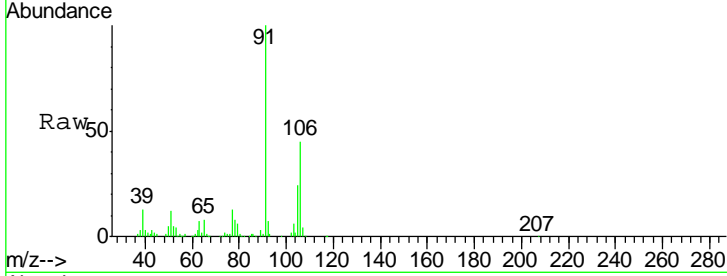
Tgt Ion	Resp	Lower	Upper
91	43098		
91	100		
106	32.7	20.6	38.4





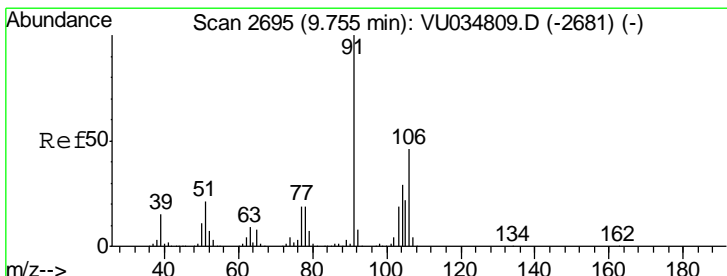
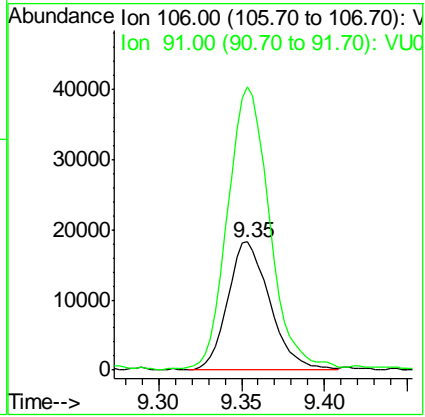
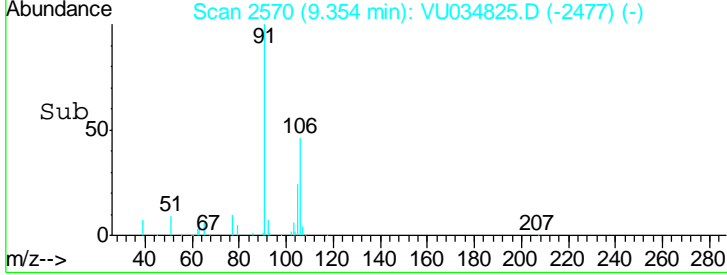
#53
 m,p-Xylene
 Concen: 5.275 ug/L
 RT: 9.35 min Scan# 2570
 Delta R.T. 0.00 min
 Lab File: VU034825.D
 Acq: 26 Sep 2019 00:15

Instrument :
 MSVOA_U
ClientSampled :
 BFDJ6

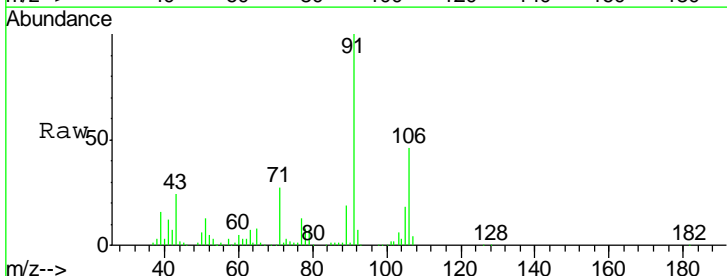


Tgt Ion:106 Resp: 32264
 Ion Ratio Lower Upper
 106 100
 91 220.7 146.9 272.7

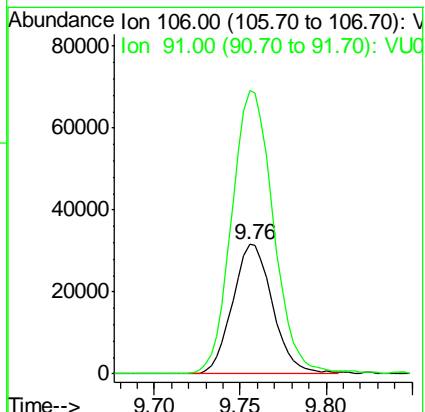
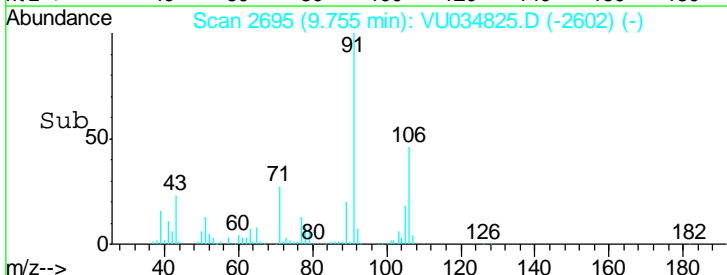
Manual Integrations
APPROVED
 MMDadoda
 9/26/2019 1:06:54 PM

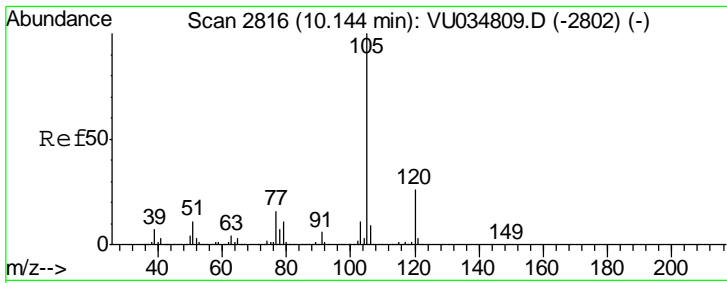


#54
 o-xylene
 Concen: 8.484 ug/L
 RT: 9.76 min Scan# 2695
 Delta R.T. 0.00 min
 Lab File: VU034825.D
 Acq: 26 Sep 2019 00:15



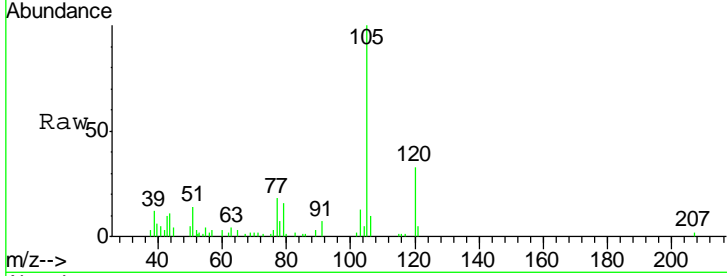
Tgt Ion:106 Resp: 51325
 Ion Ratio Lower Upper
 106 100
 91 218.5 155.6 289.0





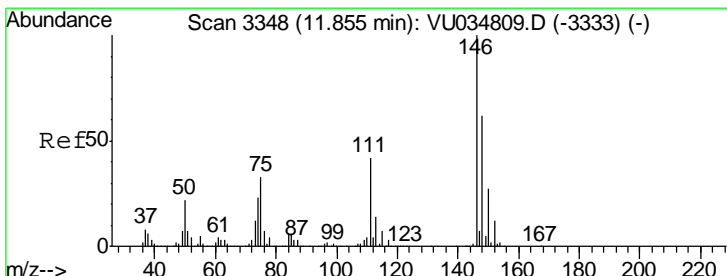
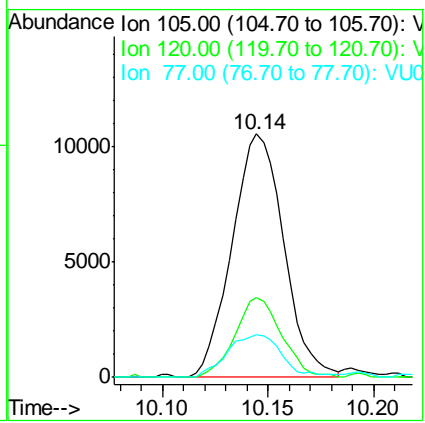
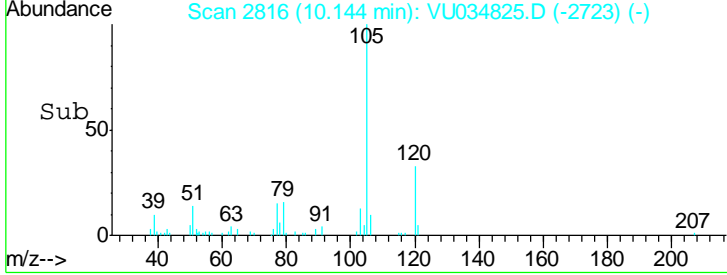
#56
 Isopropylbenzene
 Concen: 1.102 ug/L
 RT: 10.14 min Scan# 2816
 Delta R.T. 0.00 min
 Lab File: VU034825.D
 Acq: 26 Sep 2019 00:15

Instrument : MSVOA_U
 ClientSampled : BFDJ6

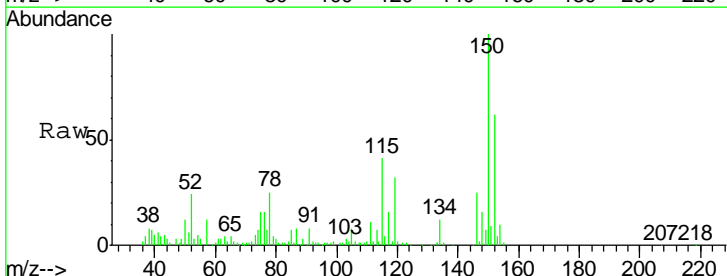


Tgt Ion	Resp	Lower	Upper
105	17983		
120	29.6	20.4	30.6
77	17.8	14.2	21.4

Manual Integrations
APPROVED
 MMDadoda
 9/26/2019 1:06:54 PM



#65
 1,2-Dichlorobenzene
 Concen: 3.207 ug/L
 RT: 11.86 min Scan# 3348
 Delta R.T. 0.00 min
 Lab File: VU034825.D
 Acq: 26 Sep 2019 00:15



Tgt Ion	Resp	Lower	Upper
146	21274		
111	44.4	35.2	52.8
148	64.0	53.0	79.6

