

Data Path : Z:\VOASRV\HPCHEM1\MSVOA U\DATA\VU092520\  
 Data File : VU040280.D  
 Acq On : 24 Sep 2020 19:20  
 Operator : SY/MD  
 Sample : VU0924WBL01  
 Misc : 25.0mL/MSVOA U/WATER  
 ALS Vial : 11 Sample Multiplier: 1

Instrument :  
 MSVOA\_U  
 ClientSampled :  
 VBLK101

Integration Parameters: rteint.p  
 Integrator: RTE  
 Smoothing : ON  
 Sampling : 1  
 Start Thrs: 0.1  
 Stop Thrs : 0

Filtering: 5  
 Min Area: 3 % of largest Peak  
 Max Peaks: 100  
 Peak Location: TOP

If leading or trailing edge < 100 prefer < Baseline drop else tangent >  
 Peak separation: 5

Method : Z:\VOASRV\HPCHEM1\MSVOA\_U\METHOD\SFAMUTR092420WMA.M  
 Title : TRACE VOA SFAM1.0

Signal : TIC

peak #	R.T. min	first scan	max scan	last scan	PK TY	peak height	corr. area	corr. % max.	% of total
1	1.604	75	82	92	rBV	96280	106284	10.84%	1.528%
2	1.922	172	181	196	rVB	82021	105945	10.81%	1.523%
3	2.581	373	386	401	rBV	172461	285184	29.09%	4.100%
4	3.060	525	535	550	rVB4	7815	15475	1.58%	0.222%
5	3.199	566	578	590	rBV3	5917	12798	1.31%	0.184%
6	4.655	1011	1031	1077	rBV2	131845	465410	47.48%	6.691%
7	5.083	1147	1164	1186	rBV	141769	322646	32.92%	4.638%
8	5.742	1347	1369	1387	rBV2	297724	771633	78.72%	11.093%
9	6.263	1516	1531	1552	rBV	281078	532781	54.35%	7.659%
10	6.703	1653	1668	1684	rBV	191963	368784	37.62%	5.302%
11	7.571	1923	1938	1957	rBV	90101	163662	16.70%	2.353%
12	7.906	2026	2042	2059	rBV	342926	595060	60.71%	8.555%
13	8.185	2117	2129	2143	rBV	60667	105392	10.75%	1.515%
14	8.639	2257	2270	2311	rBV	518345	980231	100.00%	14.092%
15	8.925	2349	2359	2374	rBV5	7156	16717	1.71%	0.240%
16	9.420	2500	2513	2544	rVB	406197	683247	69.70%	9.822%
17	10.755	2916	2928	2943	rBV2	145395	231641	23.63%	3.330%
18	11.806	3242	3255	3276	rVB2	394488	638484	65.14%	9.179%
19	12.185	3360	3373	3390	rBV	337668	554707	56.59%	7.974%

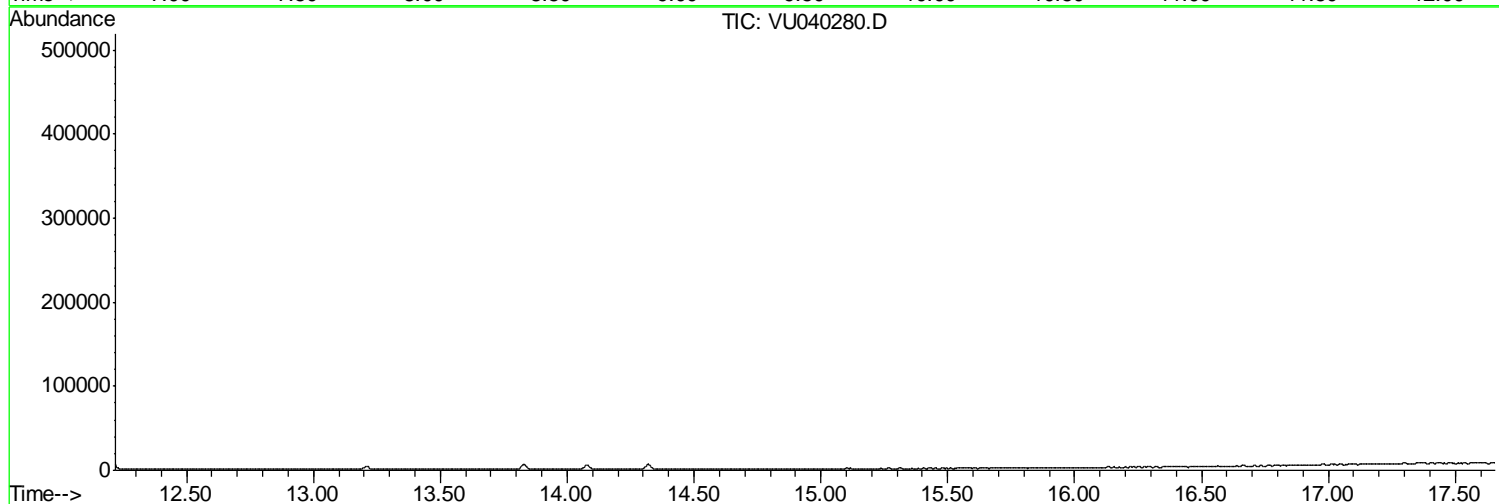
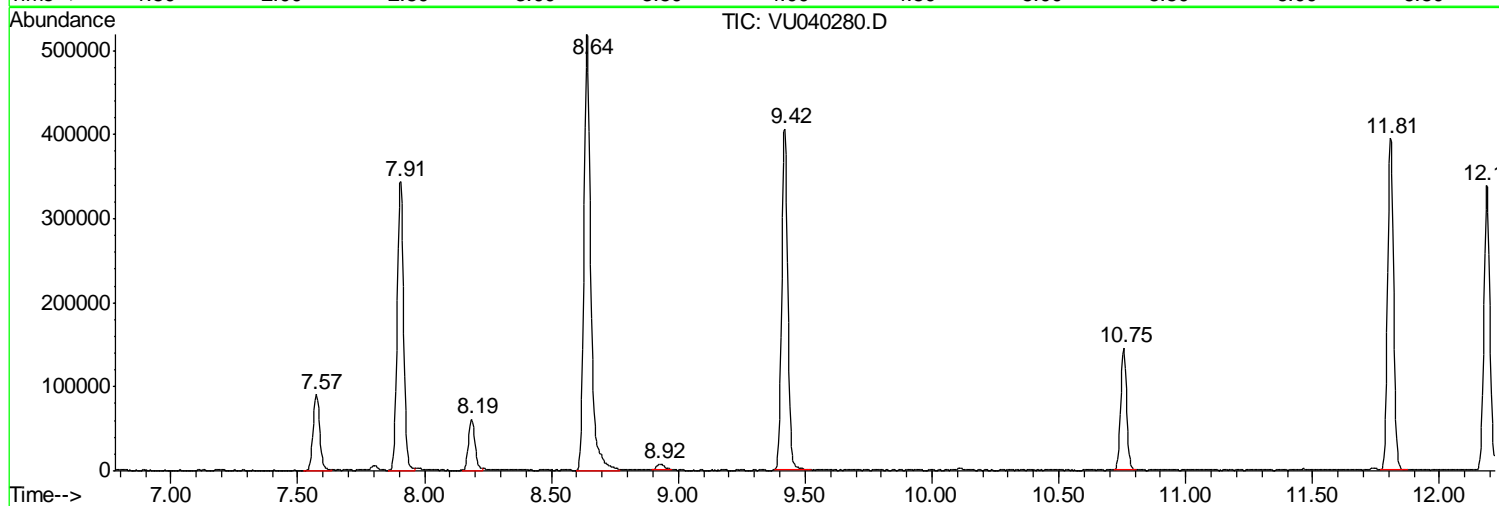
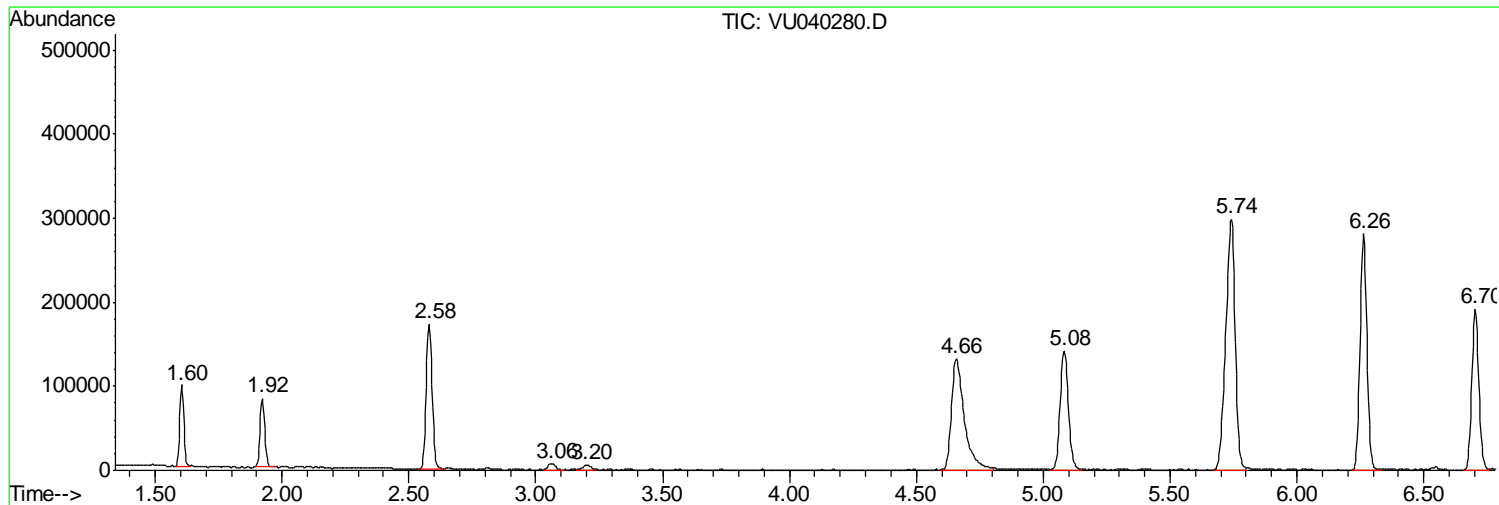
Sum of corrected areas: 6956081

Data Path : Z:\VOASRV\HPCHEM1\MSVOA U\DATA\VU092520\  
Data File : VU040280.D  
Acq On : 24 Sep 2020 19:20  
Operator : SY/MD  
Sample : VU0924WBL01  
Misc : 25.0mL/MSVOA U/WATER  
ALS Vial : 11 Sample Multiplier: 1

Instrument :  
MSVOA\_U  
ClientSampled :  
VBLK101

Quant Method : Z:\VOASRV\HPCHEM1\MSVOA\_U\METHOD\SFAMUTR092420WMA.M  
Quant Title : TRACE VOA SFAM1.0

TIC Library : C:\DATABASE\NIST11.L  
TIC Integration Parameters: LSCINT.P



Data Path : Z:\VOASRV\HPCHEM1\MSVOA\_U\DATA\VU092520\  
Data File : VU040280.D  
Acq On : 24 Sep 2020 19:20  
Operator : SY/MD  
Sample : VU0924WBL01  
Misc : 25.0mL/MSVOA\_U/WATER  
ALS Vial : 11 Sample Multiplier: 1

Instrument :  
MSVOA\_U  
ClientSampled :  
VBLK101

Quant Method : Z:\VOASRV\HPCHEM1\MSVOA\_U\METHOD\SFAMUTR092420WMA.M  
Quant Title : TRACE VOA SFAM1.0

TIC Library : C:\DATABASE\NIST11.L  
TIC Integration Parameters: LSCINT.P

No Library Search Compounds Detected

\*\*\*\*\*

Data Path : Z:\VOASRV\HPCHEM1\MSVOA\_U\DATA\VU092520\  
Data File : VU040280.D  
Acq On : 24 Sep 2020 19:20  
Operator : SY/MD  
Sample : VU0924WBL01  
Misc : 25.0mL/MSVOA\_U/WATER  
ALS Vial : 11 Sample Multiplier: 1

Instrument :  
MSVOA\_U  
ClientSampleId :  
VBLK101

Quant Method : Z:\VOASRV\HPCHEM1\MSVOA\_U\METHOD\SFAMUTR092420WMA.M  
Quant Title : TRACE VOA SFAM1.0

TIC Library : C:\DATABASE\NIST11.L  
TIC Integration Parameters: LSCINT.P

TIC Top Hit name	RT	EstConc	Units	Response	--Internal Standard--			
					#	RT	Resp	Conc

---