

Data Path : Z:\voasrv\HPCHEM1\MSVOA_U\Data\VU092521\
 Data File : VU044848.D
 Acq On : 25 Sep 2021 19:41
 Operator : SY/MD
 Sample : M3859-02
 Misc : 5.0mL/MSVOA_U/WATER
 ALS Vial : 21 Sample Multiplier: 1

Instrument :
 MSVOA_U
 ClientSampleId :
 1028-MW-02

Integration Parameters: RTEINT.P
 Integrator: RTE
 Smoothing : ON Filtering: 5
 Sampling : 1 Min Area: 3 % of largest Peak
 Start Thrs: 0.2 Max Peaks: 100
 Stop Thrs : 0 Peak Location: TOP

If leading or trailing edge < 100 prefer < Baseline drop else tangent >
 Peak separation: 5

Method : Z:\voasrv\HPCHEM1\MSVOA_U\Method\82U092421W.M
 Title : SW846 8260

Signal : TIC: VU044848.D\data.ms

| peak # | R.T. min | first scan | max scan | last scan | PK TY | peak height | corr. area | corr. % max. | % of total |
|--------|----------|------------|----------|-----------|-------|-------------|------------|--------------|------------|
| 1 | 1.491 | 40 | 47 | 67 | rVB2 | 28454 | 33560 | 2.28% | 0.414% |
| 2 | 1.604 | 75 | 82 | 92 | rBV2 | 22162 | 28365 | 1.92% | 0.350% |
| 3 | 2.633 | 393 | 402 | 416 | rVB | 10982 | 19246 | 1.31% | 0.237% |
| 4 | 4.671 | 1013 | 1036 | 1072 | rBV | 183391 | 419547 | 28.46% | 5.176% |
| 5 | 5.295 | 1214 | 1230 | 1243 | rBV | 156010 | 331492 | 22.49% | 4.090% |
| 6 | 5.379 | 1243 | 1256 | 1280 | rVB | 264808 | 543957 | 36.90% | 6.711% |
| 7 | 5.707 | 1343 | 1358 | 1378 | rBV | 197556 | 400535 | 27.17% | 4.942% |
| 8 | 6.253 | 1512 | 1528 | 1551 | rBV | 395742 | 743966 | 50.47% | 9.179% |
| 9 | 6.546 | 1604 | 1619 | 1638 | rBV | 372604 | 692598 | 46.99% | 8.545% |
| 10 | 7.903 | 2026 | 2041 | 2057 | rBV | 607194 | 1043137 | 70.77% | 12.870% |
| 11 | 8.555 | 2231 | 2244 | 2267 | rBV | 873340 | 1474023 | 100.00% | 18.186% |
| 12 | 9.420 | 2500 | 2513 | 2540 | rBV | 558032 | 907348 | 61.56% | 11.195% |
| 13 | 10.636 | 2878 | 2891 | 2917 | rVB | 407469 | 643403 | 43.65% | 7.938% |
| 14 | 11.816 | 3245 | 3258 | 3277 | rBV | 520678 | 824111 | 55.91% | 10.168% |

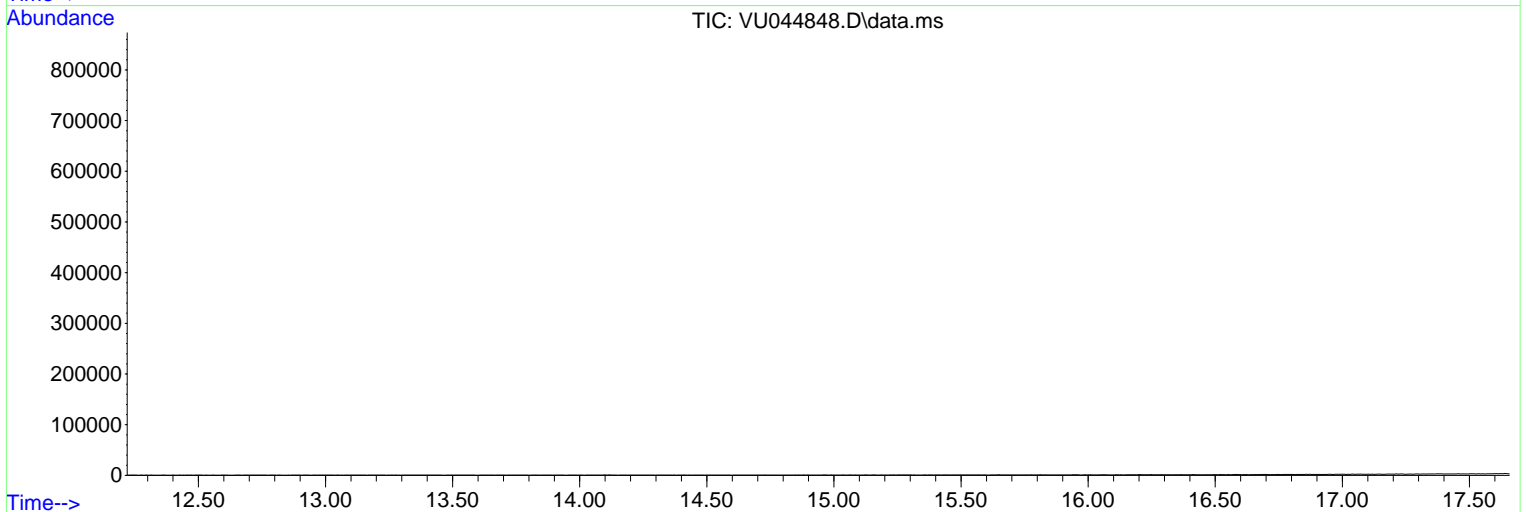
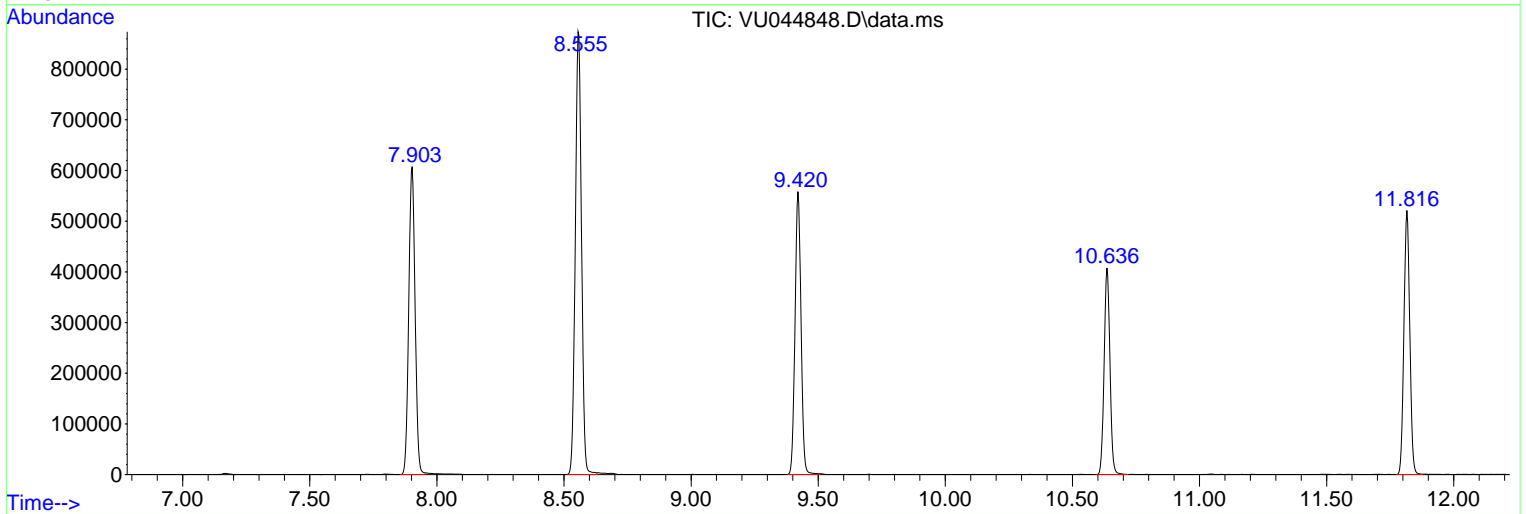
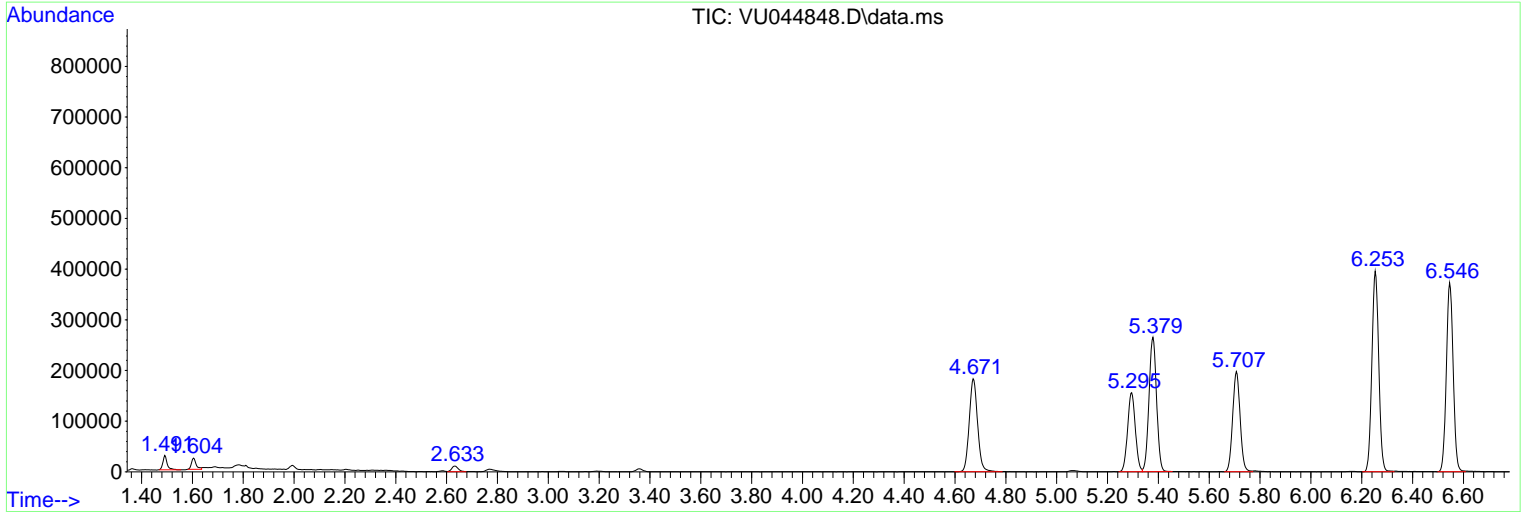
Sum of corrected areas: 8105288

Data Path : Z:\voasrv\HPCHEM1\MSVOA_U\Data\VU092521\
 Data File : VU044848.D
 Acq On : 25 Sep 2021 19:41
 Operator : SY/MD
 Sample : M3859-02
 Misc : 5.0mL/MSVOA_U/WATER
 ALS Vial : 21 Sample Multiplier: 1

Instrument :
 MSVOA_U
ClientSampled :
 1028-MW-02

Quant Method : Z:\voasrv\HPCHEM1\MSVOA_U\Method\82U092421W.M
 Quant Title : SW846 8260

TIC Library : C:\Database\NIST20.L
 TIC Integration Parameters: LSCINT.P



Library Search Compound Report

Data Path : Z:\voasrv\HPCHEM1\MSVOA_U\Data\VU092521\
Data File : VU044848.D
Acq On : 25 Sep 2021 19:41
Operator : SY/MD
Sample : M3859-02
Misc : 5.0mL/MSVOA_U/WATER
ALS Vial : 21 Sample Multiplier: 1

Instrument :
MSVOA_U
ClientSampleId :
1028-MW-02

Quant Method : Z:\voasrv\HPCHEM1\MSVOA_U\Method\82U092421W.M
Quant Title : SW846 8260

TIC Library : C:\Database\NIST20.L
TIC Integration Parameters: LSCINT.P

No Library Search Compounds Detected

Data Path : Z:\voasrv\HPCHEM1\MSVOA_U\Data\VU092521\
Data File : VU044848.D
Acq On : 25 Sep 2021 19:41
Operator : SY/MD
Sample : M3859-02
Misc : 5.0mL/MSVOA_U/WATER
ALS Vial : 21 Sample Multiplier: 1

Instrument :
MSVOA_U
ClientSampleId :
1028-MW-02

Quant Method : Z:\voasrv\HPCHEM1\MSVOA_U\Method\82U092421W.M
Quant Title : SW846 8260

TIC Library : C:\Database\NIST20.L
TIC Integration Parameters: LSCINT.P

| TIC Top Hit name | RT | EstConc | Units | Response | --Internal Standard-- | | | |
|------------------|----|---------|-------|----------|-----------------------|----|------|------|
| | | | | | # | RT | Resp | Conc |
