

Data Path : Z:\voasrv\HPCHEM1\MSVOA_U\Data\VU092524\
 Data File : VU060999.D
 Acq On : 25 Sep 2024 13:08
 Operator : MD/SY
 Sample : P3990-03
 Misc : 25.0mL/MSVOA_U/WATER
 ALS Vial : 6 Sample Multiplier: 1

Instrument :
 MSVOA_U
 ClientSampleId :
 VHBLK001

Integration Parameters: rteint.p
 Integrator: RTE
 Smoothing : ON
 Sampling : 1
 Start Thrs : 0.1
 Stop Thrs : 0
 Filtering: 5
 Min Area: 3 % of largest Peak
 Max Peaks: 100
 Peak Location: TOP

If leading or trailing edge < 100 prefer < Baseline drop else tangent >
 Peak separation: 5

Method : Z:\voasrv\HPCHEM1\MSVOA_U\Method\SFAMUTR091624WMA.M
 Title : TRACE VOA SFAM1.0

Signal : TIC: VU060999.D\data.ms

peak #	R.T. min	first scan	max scan	last scan	PK TY	peak height	corr. area	corr. % max.	% of total
1	1.596	87	95	110	rVB	66990	76446	17.55%	2.111%
2	1.911	184	193	206	rBV	53264	70387	16.16%	1.944%
3	2.560	383	395	414	rBV	90193	150471	34.55%	4.155%
4	4.637	1029	1041	1084	rBV	56852	173925	39.93%	4.803%
5	5.055	1156	1171	1197	rBV	89610	199408	45.78%	5.506%
6	5.718	1357	1377	1404	rBV2	161800	435555	100.00%	12.027%
7	6.242	1526	1540	1569	rBV	155034	310297	71.24%	8.568%
8	6.682	1665	1677	1703	rBV2	105642	211034	48.45%	5.827%
9	7.560	1937	1950	1973	rBV2	43857	84570	19.42%	2.335%
10	7.891	2033	2053	2074	rBV	172634	309344	71.02%	8.542%
11	8.174	2132	2141	2156	rBV3	26158	47279	10.85%	1.306%
12	8.467	2221	2232	2241	rBV3	2546	4506	1.03%	0.124%
13	8.631	2272	2283	2318	rBV2	205836	432724	99.35%	11.949%
14	9.412	2513	2526	2549	rBV	229196	403573	92.66%	11.144%
15	10.750	2927	2942	2956	rBV	80070	131612	30.22%	3.634%
16	10.885	2975	2984	2997	rVB3	4177	7021	1.61%	0.194%
17	11.804	3257	3270	3293	rBV	185198	314907	72.30%	8.696%
18	12.187	3377	3389	3404	rBV	145423	252666	58.01%	6.977%
19	12.762	3558	3568	3577	rBV3	3421	5721	1.31%	0.158%

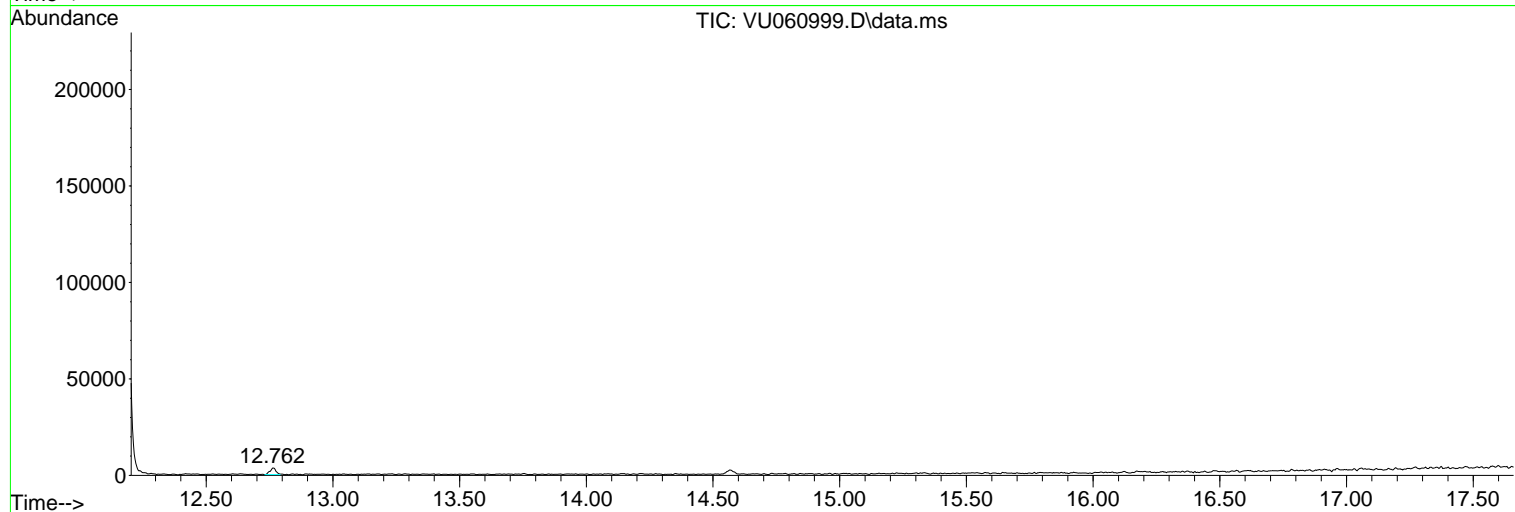
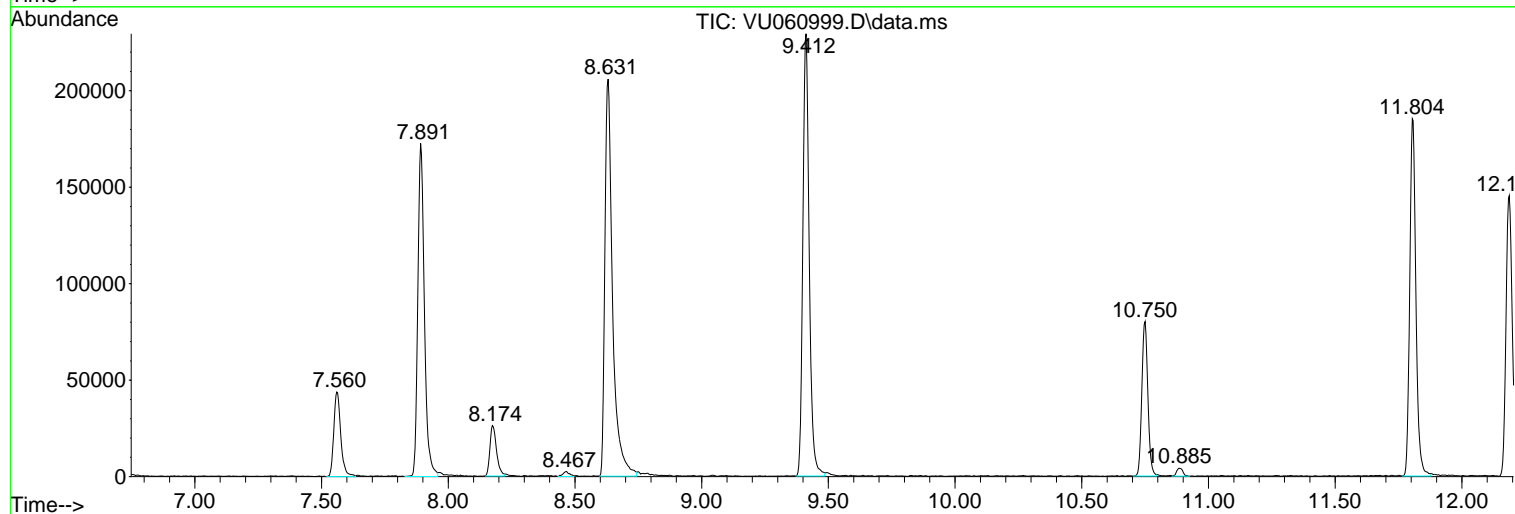
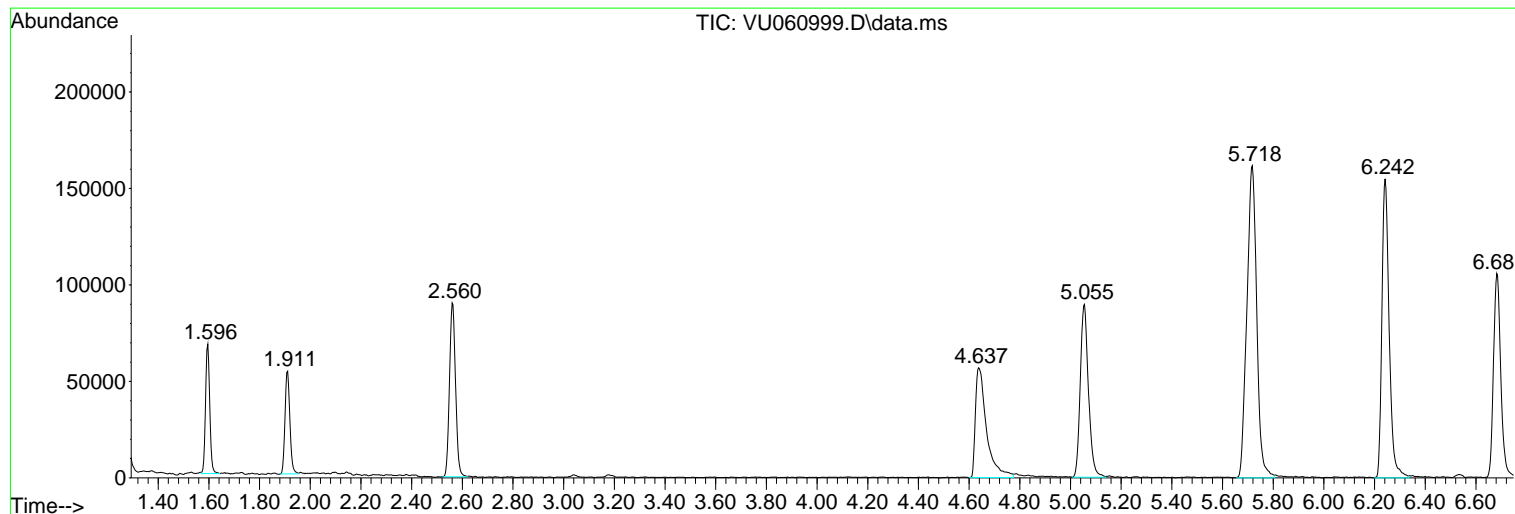
Sum of corrected areas: 3621446

Data Path : Z:\voasrv\HPCHEM1\MSVOA_U\Data\VU092524\
Data File : VU060999.D
Acq On : 25 Sep 2024 13:08
Operator : MD/SY
Sample : P3990-03
Misc : 25.0mL/MSVOA_U/WATER
ALS Vial : 6 Sample Multiplier: 1

Instrument :
MSVOA_U
ClientSampleId :
VHBLK001

Quant Method : Z:\voasrv\HPCHEM1\MSVOA_U\Method\SFAMUTR091624WMA.M
Quant Title : TRACE VOA SFAM1.0

TIC Library : C:\Database\NIST20.L
TIC Integration Parameters: LSCINT.P



Library Search Compound Report

Data Path : Z:\voasrv\HPCHEM1\MSVOA_U\Data\VU092524\
Data File : VU060999.D
Acq On : 25 Sep 2024 13:08
Operator : MD/SY
Sample : P3990-03
Misc : 25.0mL/MSVOA_U/WATER
ALS Vial : 6 Sample Multiplier: 1

Instrument :
MSVOA_U
ClientSampleId :
VHBLK001

Quant Method : Z:\voasrv\HPCHEM1\MSVOA_U\Method\SFAMUTR091624WMA.M
Quant Title : TRACE VOA SFAM1.0

TIC Library : C:\Database\NIST20.L
TIC Integration Parameters: LSCINT.P

No Library Search Compounds Detected

Data Path : Z:\voasrv\HPCHEM1\MSVOA_U\Data\VU092524\
Data File : VU060999.D
Acq On : 25 Sep 2024 13:08
Operator : MD/SY
Sample : P3990-03
Misc : 25.0mL/MSVOA_U/WATER
ALS Vial : 6 Sample Multiplier: 1

Instrument :
MSVOA_U
ClientSampleId :
VHBLK001

Quant Method : Z:\voasrv\HPCHEM1\MSVOA_U\Method\SFAMUTR091624WMA.M
Quant Title : TRACE VOA SFAM1.0

TIC Library : C:\Database\NIST20.L
TIC Integration Parameters: LSCINT.P

TIC Top Hit name	RT	EstConc	Units	Response	--Internal Standard--		
					#	RT	Resp Conc
