

Data Path : Z:\VOASRV\HPCHEM1\MSVOA U\DATA\VU092618\
 Data File : VU027156.D
 Acq On : 26 Sep 2018 03:15
 Operator : MD/SY
 Sample : J4980-11
 Misc : 5.0mL/MSVOA U/WATER
 ALS Vial : 37 Sample Multiplier: 1

Instrument :
 MSVOA_U
 ClientSampleId :
 BPSI-TT-MW30411-20180917

Integration Parameters: RTEINT.P

Integrator: RTE
 Smoothing : ON Filtering: 5
 Sampling : 1 Min Area: 3 % of largest Peak
 Start Thrs: 0.2 Max Peaks: 100
 Stop Thrs : 0 Peak Location: TOP

If leading or trailing edge < 100 prefer < Baseline drop else tangent >
 Peak separation: 5

Method : Z:\VOASRV\HPCHEM1\MSVOA_U\METHOD\82U092218W.M
 Title : SW846 8260

Signal : TIC

peak #	R.T. min	first scan	max scan	last scan	PK TY	peak height	corr. area	corr. % max.	% of total
1	2.443	382	395	417	rBV	32373	58494	8.67%	1.795%
2	4.196	923	940	961	rBV3	5162	15710	2.33%	0.482%
3	4.884	1135	1154	1171	rBV2	97492	217993	32.30%	6.688%
4	4.987	1171	1186	1212	rVB	127898	282662	41.88%	8.672%
5	5.312	1271	1287	1307	rBV	126035	264764	39.22%	8.123%
6	5.890	1453	1467	1487	rBV	197887	390809	57.90%	11.990%
7	7.569	1976	1989	2022	rBV	377028	674995	100.00%	20.709%
8	8.186	2165	2181	2189	rBV	9145	19492	2.89%	0.598%
9	9.093	2450	2463	2492	rBV	285334	482948	71.55%	14.817%
10	10.308	2830	2841	2864	rBV	240707	389335	57.68%	11.945%
11	10.617	2926	2937	2948	rBV3	3768	6947	1.03%	0.213%
12	11.485	3195	3207	3227	rBV	286908	455239	67.44%	13.967%

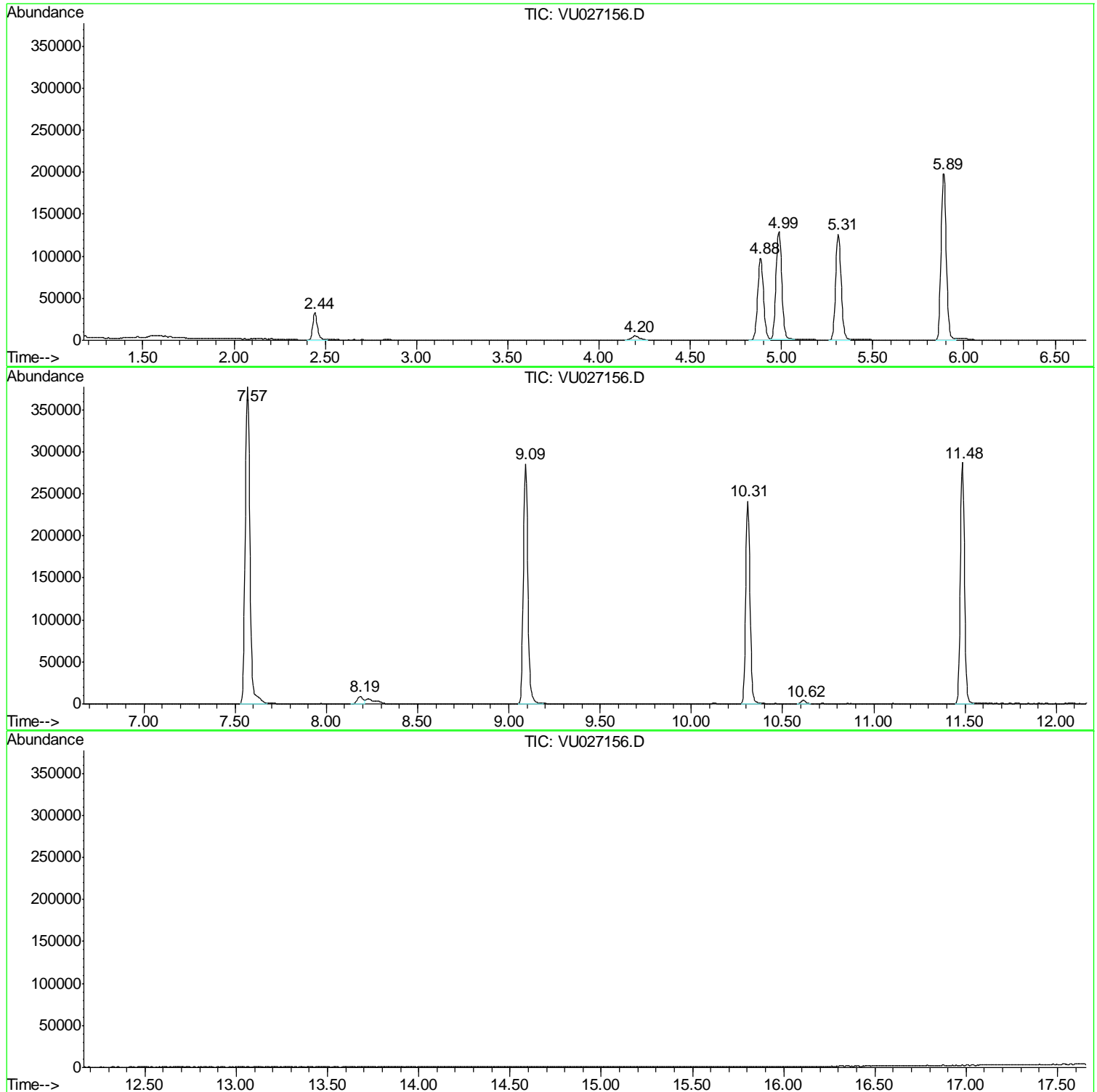
Sum of corrected areas: 3259388

Data Path : Z:\VOASRV\HPCHEM1\MSVOA U\DATA\VU092618\
Data File : VU027156.D
Acq On : 26 Sep 2018 03:15
Operator : MD/SY
Sample : J4980-11
Misc : 5.0mL/MSVOA U/WATER
ALS Vial : 37 Sample Multiplier: 1

Instrument :
MSVOA_U
ClientSampleId :
BPSI-TT-MW30411-20180917

Quant Method : Z:\VOASRV\HPCHEM1\MSVOA_U\METHOD\82U092218W.M
Quant Title : SW846 8260

TIC Library : C:\DATABASE\NIST11.L
TIC Integration Parameters: LSCINT.P



Data Path : Z:\VOASRV\HPCHEM1\MSVOA_U\DATA\VU092618\
Data File : VU027156.D
Acq On : 26 Sep 2018 03:15
Operator : MD/SY
Sample : J4980-11
Misc : 5.0mL/MSVOA_U/WATER
ALS Vial : 37 Sample Multiplier: 1

Instrument :
MSVOA_U
ClientSampleId :
BPSI-TT-MW30411-20180917

Quant Method : Z:\VOASRV\HPCHEM1\MSVOA_U\METHOD\82U092218W.M
Quant Title : SW846 8260

TIC Library : C:\DATABASE\NIST11.L
TIC Integration Parameters: LSCINT.P

No Library Search Compounds Detected

Data Path : Z:\VOASRV\HPCHEM1\MSVOA_U\DATA\VU092618\
Data File : VU027156.D
Acq On : 26 Sep 2018 03:15
Operator : MD/SY
Sample : J4980-11
Misc : 5.0mL/MSVOA_U/WATER
ALS Vial : 37 Sample Multiplier: 1

Instrument :
MSVOA_U
ClientSampleId :
BPSI-TT-MW30411-20180917

Quant Method : Z:\VOASRV\HPCHEM1\MSVOA_U\METHOD\82U092218W.M
Quant Title : SW846 8260

TIC Library : C:\DATABASE\NIST11.L
TIC Integration Parameters: LSCINT.P

TIC Top Hit name	RT	EstConc	Units	Response	--Internal Standard--			
					#	RT	Resp	Conc
