

Data Path : Z:\VOASRV\HPCHEM1\MSVOA U\DATA\VU092620\  
 Data File : VU040311.D  
 Acq On : 25 Sep 2020 19:47  
 Operator : SY/MD  
 Sample : L4147-03DL10X  
 Misc : 25.0mL/MSVOA U/WATER  
 ALS Vial : 26 Sample Multiplier: 1

Instrument :  
 MSVOA\_U  
 ClientSampleID :  
 BFSB3DL

Quant Time: Sep 26 06:52:19 2020  
 Quant Method : Z:\VOASRV\HPCHEM1\MSVOA\_U\METHOD\SOMUTR083120WMA.M  
 Quant Title : TRACE VOA SOM01.0  
 QLast Update : Sat Sep 26 06:44:13 2020  
 Response via : Initial Calibration

Internal Standards	R.T.	QIon	Response	Conc	Units	Dev(Min)
1) 1,4-Difluorobenzene	6.26	114	127895	5.00	ug/L	0.00
28) Chlorobenzene-d5	9.42	117	130413	5.00	ug/L	0.00
60) 1,4-Dichlorobenzene-d4	11.81	152	56649	5.00	ug/L	0.00

## System Monitoring Compounds

4) Vinyl Chloride-d3	1.60	65	32044	4.59	ug/L	0.00
Spiked Amount	5.000	Range	40 - 130	Recovery	=	91.80%
7) Chloroethane-d5	1.92	69	31589	5.43	ug/L	0.00
Spiked Amount	5.000	Range	65 - 130	Recovery	=	108.60%
11) 1,1-Dichloroethene-d2	2.58	63	54214	3.03	ug/L	0.00
Spiked Amount	5.000	Range	60 - 125	Recovery	=	60.60%
20) 2-Butanone-d5	4.66	46	170495	61.04	ug/L	0.00
Spiked Amount	50.000	Range	40 - 130	Recovery	=	122.08%
24) Chloroform-d	5.08	84	75279	4.61	ug/L	0.00
Spiked Amount	5.000	Range	70 - 125	Recovery	=	92.20%
26) 1,2-Dichloroethane-d4	5.72	65	48288	4.80	ug/L	0.00
Spiked Amount	5.000	Range	70 - 130	Recovery	=	96.00%
32) Benzene-d6	5.74	84	141587	4.65	ug/L	0.00
Spiked Amount	5.000	Range	70 - 125	Recovery	=	93.00%
36) 1,2-Dichloropropane-d6	6.70	67	49284	4.91	ug/L	0.00
Spiked Amount	5.000	Range	60 - 140	Recovery	=	98.20%
41) Toluene-d8	7.91	98	112642	4.10	ug/L	0.00
Spiked Amount	5.000	Range	70 - 130	Recovery	=	82.00%
43) trans-1,3-Dichloropropene-	8.19	79	17996	3.90	ug/L	0.00
Spiked Amount	5.000	Range	55 - 130	Recovery	=	78.00%
46) 2-Hexanone-d5	8.64	63	117482	53.80	ug/L	0.00
Spiked Amount	50.000	Range	45 - 130	Recovery	=	107.60%
57) 1,1,2,2-Tetrachloroethane-	10.75	84	43256	4.98	ug/L	0.00
Spiked Amount	5.000	Range	65 - 120	Recovery	=	99.60%
64) 1,2-Dichlorobenzene-d4	12.19	152	45436	4.96	ug/L	0.00
Spiked Amount	5.000	Range	80 - 120	Recovery	=	99.20%

## Target Compounds

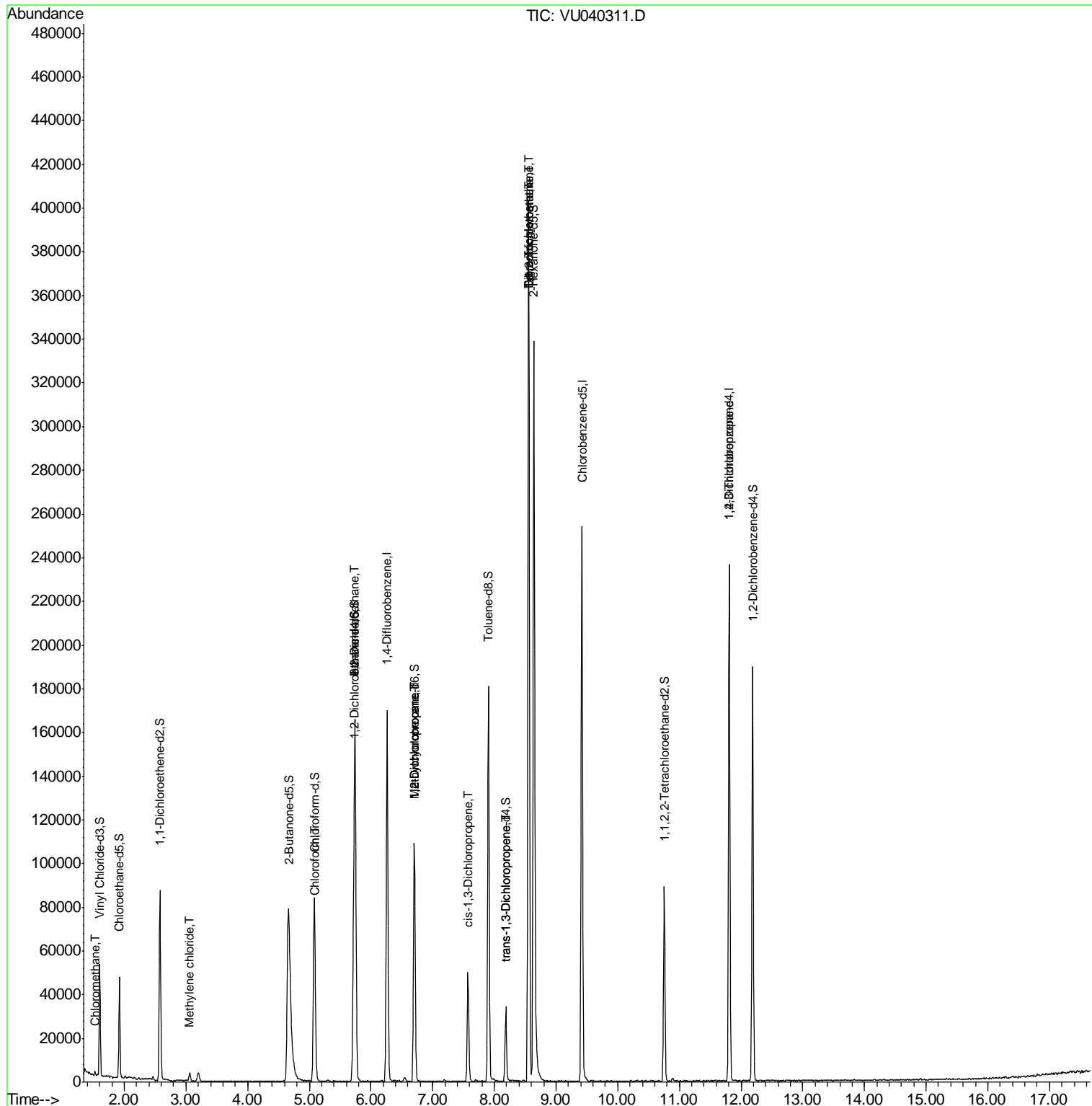
Target Compounds	R.T.	QIon	Response	Conc	Units	Ovalue
3) Chloromethane	1.53	50	1331	0.110	ug/L	92
16) Methylene chloride	3.06	84	1653	0.128	ug/L	89
25) Chloroform	5.10	83	1564	0.070	ug/L	100
27) 1,2-Dichloroethane	5.74	62	882	0.054	ug/L #	78
35) Methylcyclohexane	6.70	83	10960	0.572	ug/L #	14
37) 1,2-Dichloropropane	6.70	63	5877	0.465	ug/L #	89
39) cis-1,3-Dichloropropene	7.57	75	1317	0.071	ug/L #	47
44) trans-1,3-Dichloropropene	8.19	75	969	0.056	ug/L #	79
45) 1,1,2-Trichloroethane	8.56	97	833	0.091	ug/L #	1
47) Tetrachloroethene	8.56	164	81754	9.945	ug/L	98
49) Dibromochloromethane	8.56	129	81811	7.406	ug/L #	11
59) 1,2,3-Trichloropropane	11.81	75	7778	0.831	ug/L	91

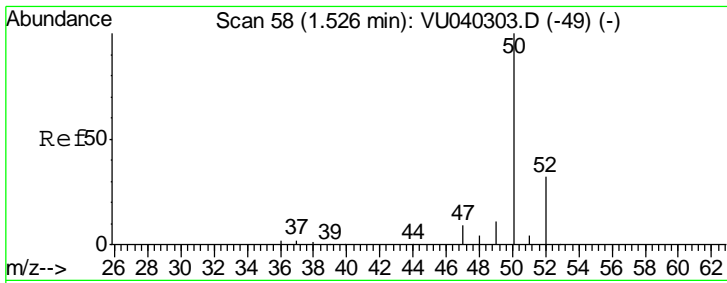
(#) = qualifier out of range (m) = manual integration (+) = signals summed

Data Path : Z:\VOASRV\HPCHEM1\MSVOA U\DATA\VU092620\  
 Data File : VU040311.D  
 Acq On : 25 Sep 2020 19:47  
 Operator : SY/MD  
 Sample : L4147-03DL10X  
 Misc : 25.0mL/MSVOA U/WATER  
 ALS Vial : 26 Sample Multiplier: 1

Instrument :  
 MSVOA\_U  
 Client Sampled :  
 BFSB3DL

Quant Time: Sep 26 06:52:19 2020  
 Quant Method : Z:\VOASRV\HPCHEM1\MSVOA\_U\METHOD\SOMUTR083120WMA.M  
 Quant Title : TRACE VOA SOM01.0  
 QLast Update : Sat Sep 26 06:44:13 2020  
 Response via : Initial Calibration

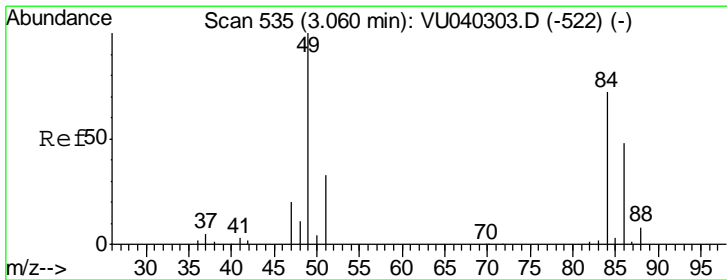
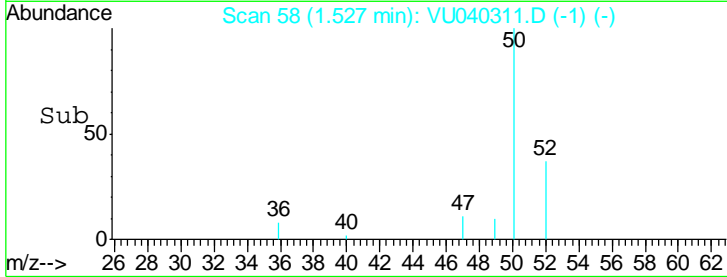
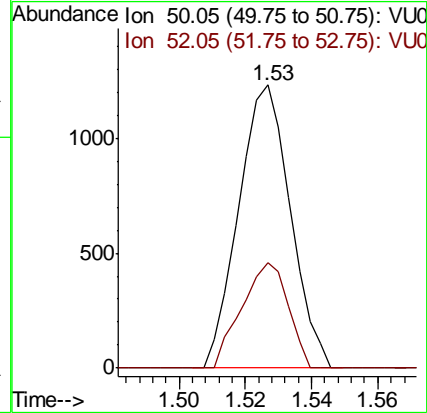
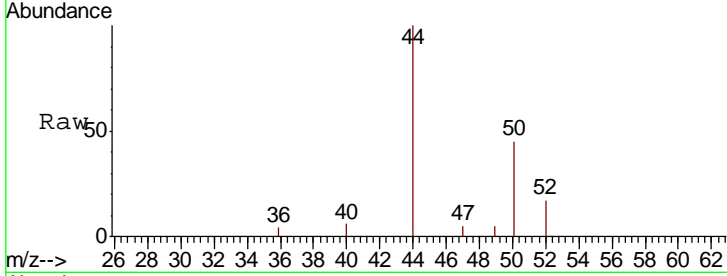




#3  
 Chloromethane  
 Concen: 0.110 ug/L  
 RT: 1.53 min Scan# 58  
 Delta R.T. 0.00 min  
 Lab File: VU040311.D  
 Acq: 25 Sep 2020 19:47

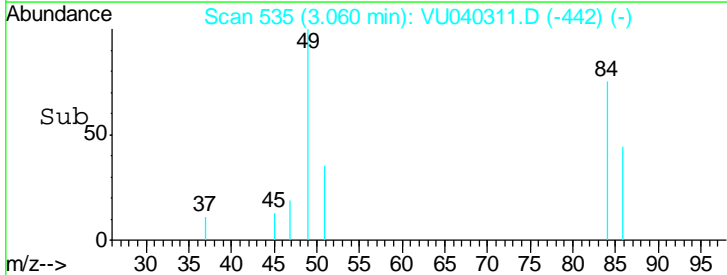
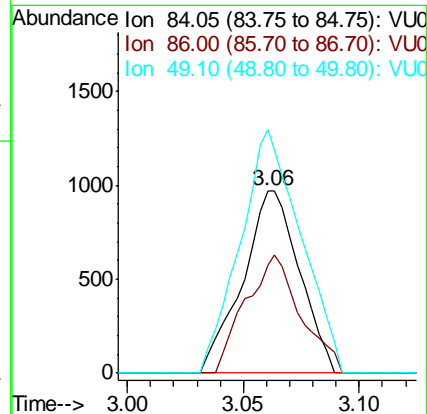
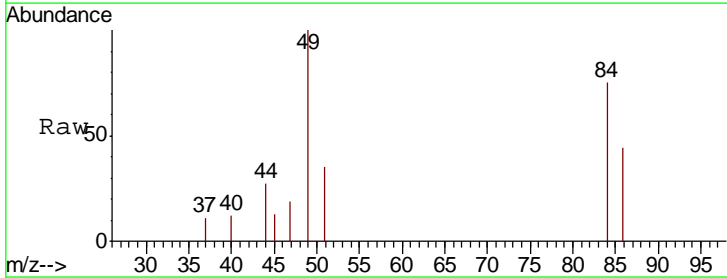
Instrument :  
 MSVOA\_U  
 ClientSampleId :  
 BFSB3DL

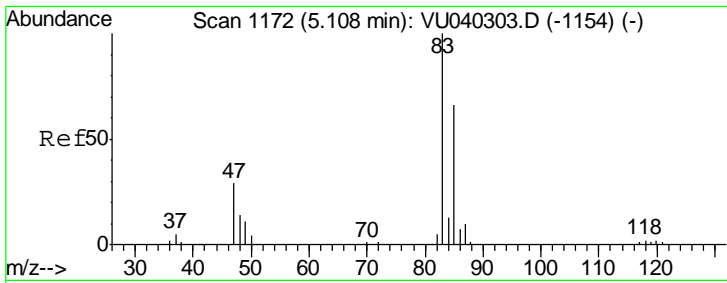
Tgt Ion	Resp	Lower	Upper
50	1331		
52	37.0	22.8	42.4



#16  
 Methylene chloride  
 Concen: 0.128 ug/L  
 RT: 3.06 min Scan# 535  
 Delta R.T. 0.00 min  
 Lab File: VU040311.D  
 Acq: 25 Sep 2020 19:47

Tgt Ion	Resp	Lower	Upper
84	1653		
86	58.9	45.2	84.0
49	133.3	104.0	193.2

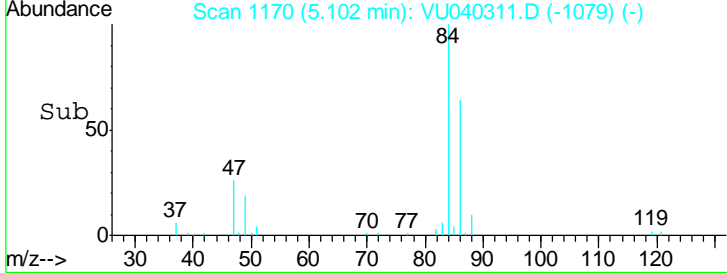
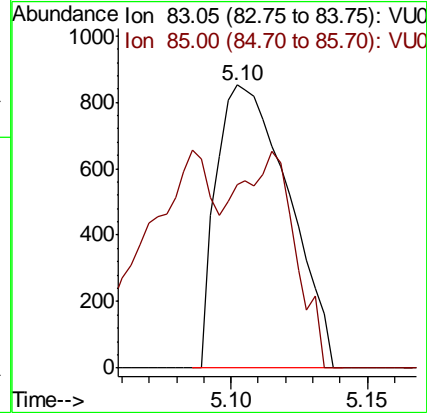
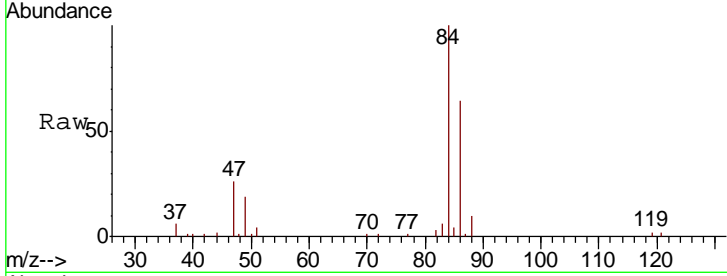




#25  
 Chloroform  
 Concen: 0.070 ug/L  
 RT: 5.10 min Scan# 1170  
 Delta R.T. -0.01 min  
 Lab File: VU040311.D  
 Acq: 25 Sep 2020 19:47

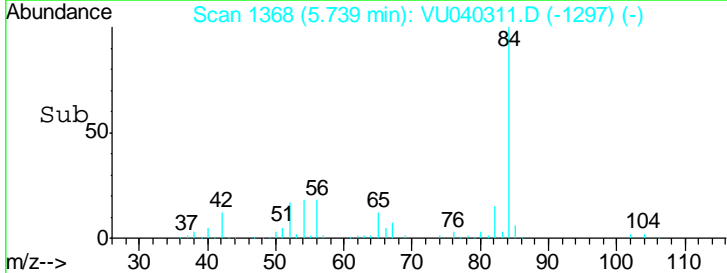
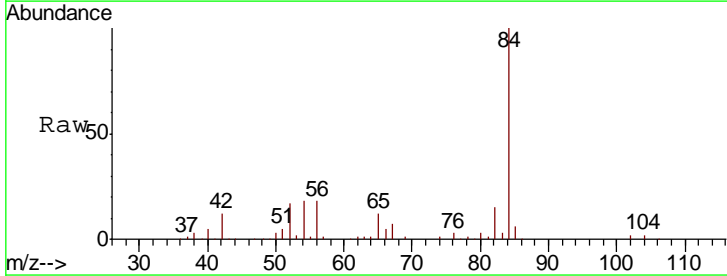
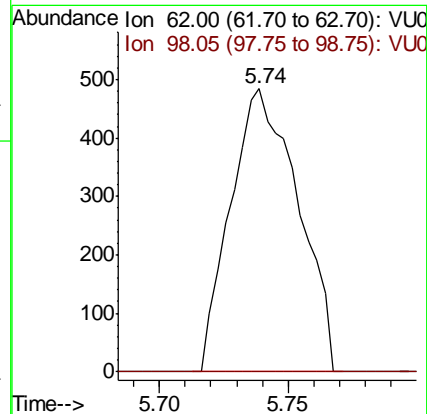
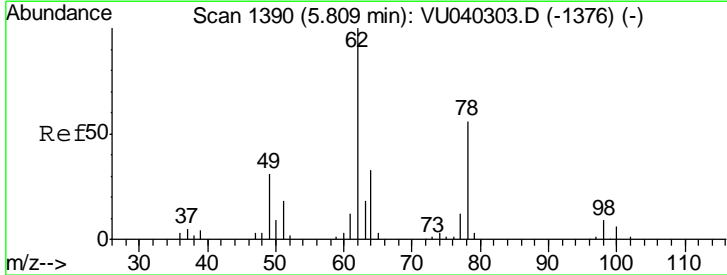
Instrument :  
 MSVOA\_U  
 ClientSampled :  
 BFSB3DL

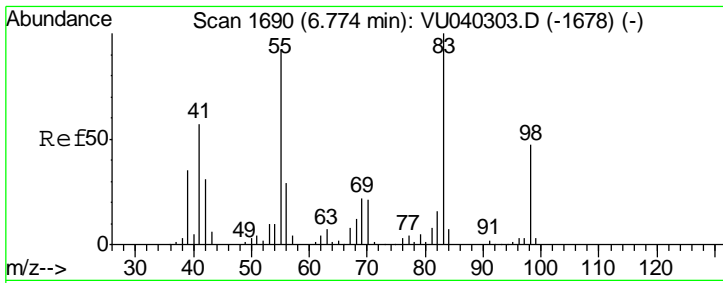
Tgt Ion	Resp	Lower	Upper
83	1564		
85	64.8	45.3	84.1



#27  
 1,2-Dichloroethane  
 Concen: 0.054 ug/L  
 RT: 5.74 min Scan# 1368  
 Delta R.T. -0.07 min  
 Lab File: VU040311.D  
 Acq: 25 Sep 2020 19:47

Tgt Ion	Resp	Lower	Upper
62	882		
98	0.0	6.1	9.1#

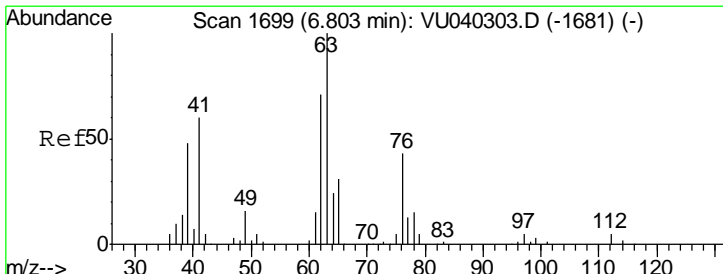
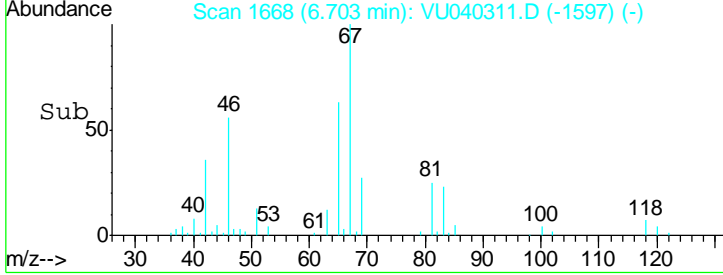
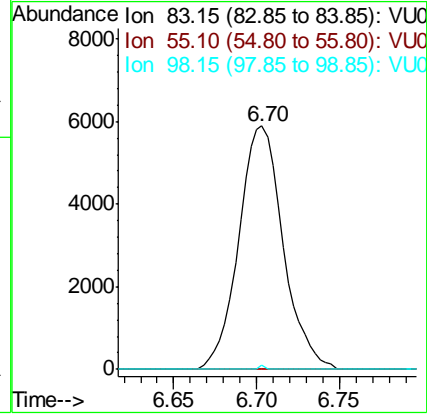
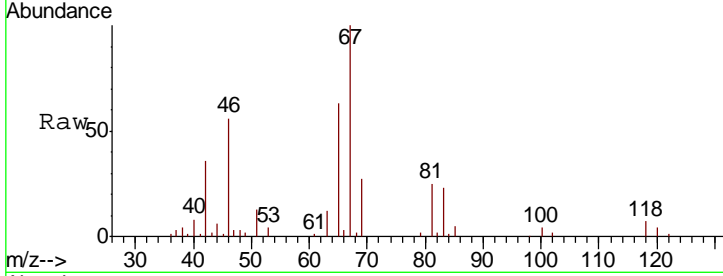




#35  
 Methylcyclohexane  
 Concen: 0.572 ug/L  
 RT: 6.70 min Scan# 1668  
 Delta R.T. -0.07 min  
 Lab File: VU040311.D  
 Acq: 25 Sep 2020 19:47

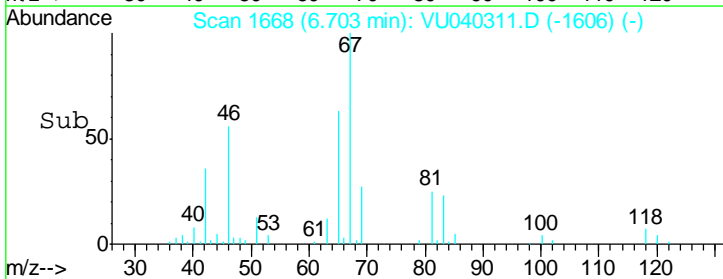
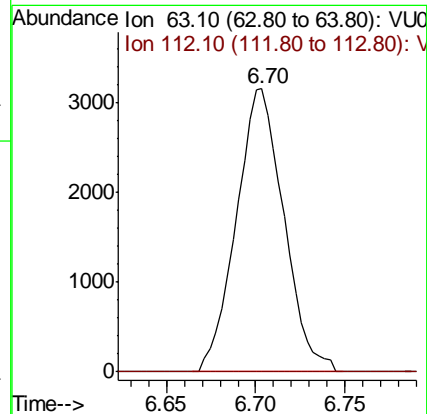
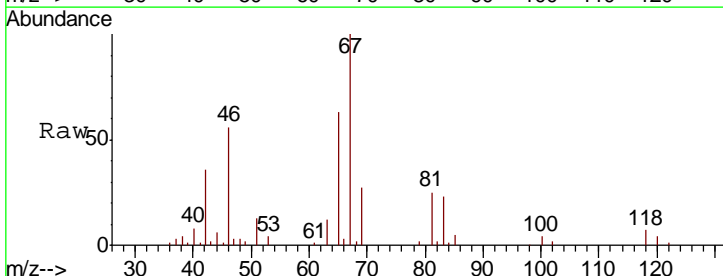
Instrument :  
 MSVOA\_U  
 ClientSampled :  
 BFSB3DL

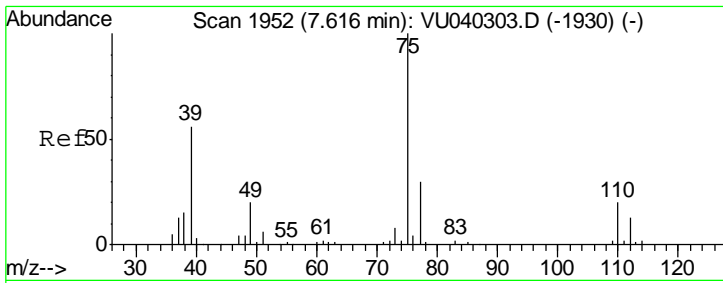
Tgt Ion	Resp	Lower	Upper
83	10960		
55	0.0	70.5	105.7#
98	0.2	37.8	56.6#



#37  
 1,2-Dichloropropane  
 Concen: 0.465 ug/L  
 RT: 6.70 min Scan# 1668  
 Delta R.T. -0.10 min  
 Lab File: VU040311.D  
 Acq: 25 Sep 2020 19:47

Tgt Ion	Resp	Lower	Upper
63	5877		
112	0.4	3.2	4.8#

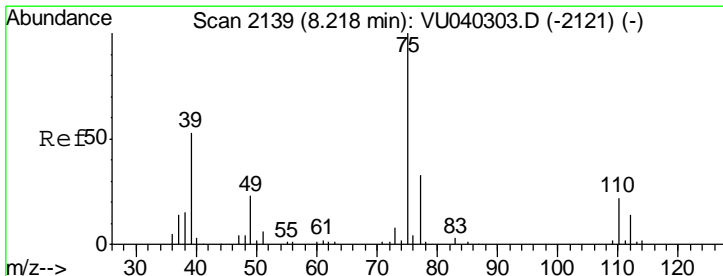
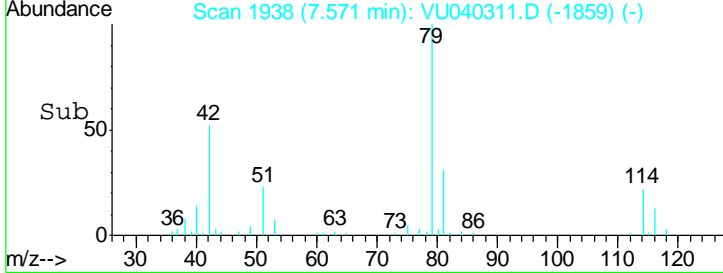
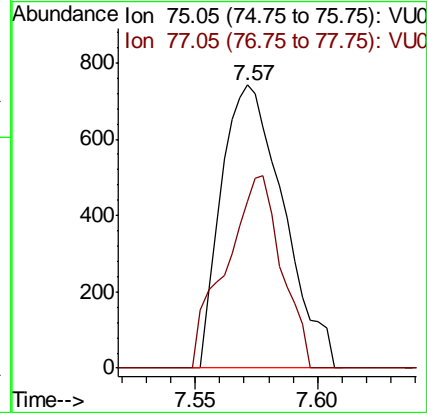
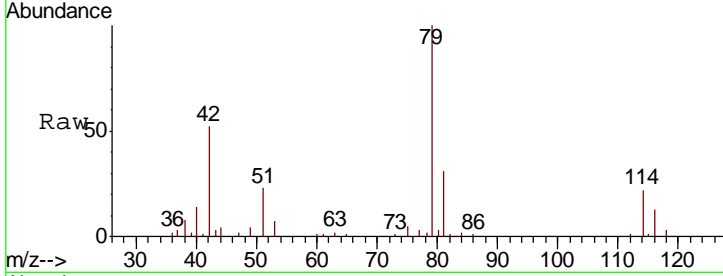




#39  
 cis-1,3-Dichloropropene  
 Concen: 0.071 ug/L  
 RT: 7.57 min Scan# 1938  
 Delta R.T. -0.04 min  
 Lab File: VU040311.D  
 Acq: 25 Sep 2020 19:47

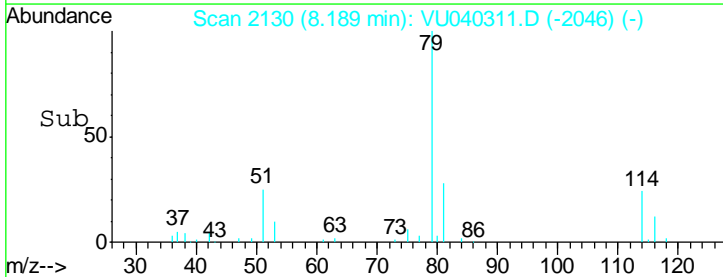
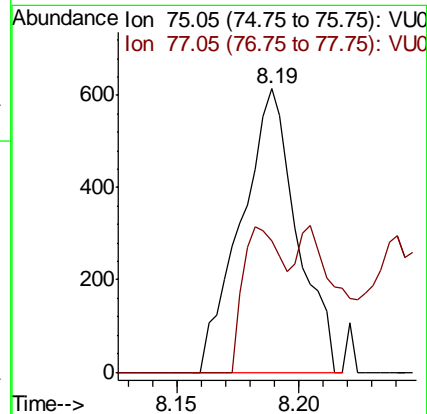
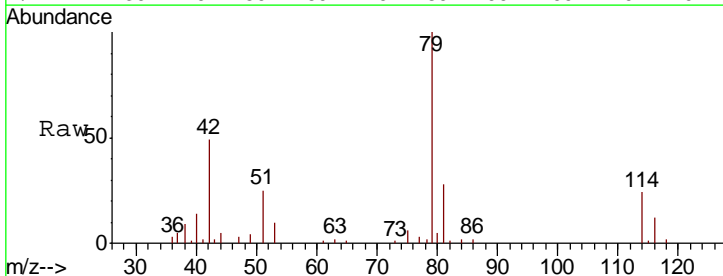
Instrument :  
 MSVOA\_U  
 ClientSampled :  
 BFSB3DL

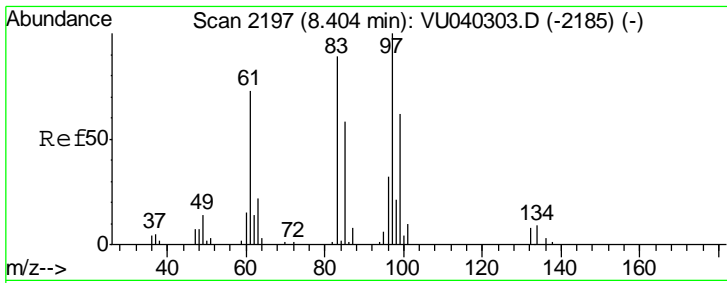
Tgt Ion: 75 Resp: 1317  
 Ion Ratio Lower Upper  
 75 100  
 77 59.2 21.1 39.3#



#44  
 trans-1,3-Dichloropropene  
 Concen: 0.056 ug/L  
 RT: 8.19 min Scan# 2130  
 Delta R.T. -0.03 min  
 Lab File: VU040311.D  
 Acq: 25 Sep 2020 19:47

Tgt Ion: 75 Resp: 969  
 Ion Ratio Lower Upper  
 75 100  
 77 46.3 23.9 44.3#

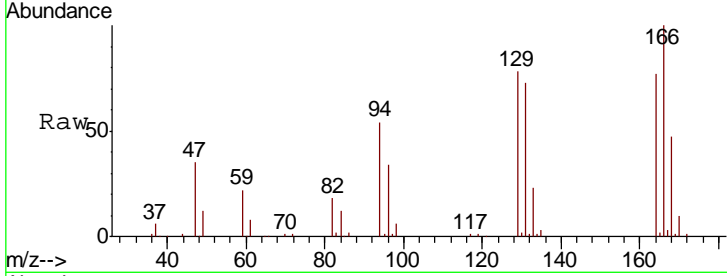




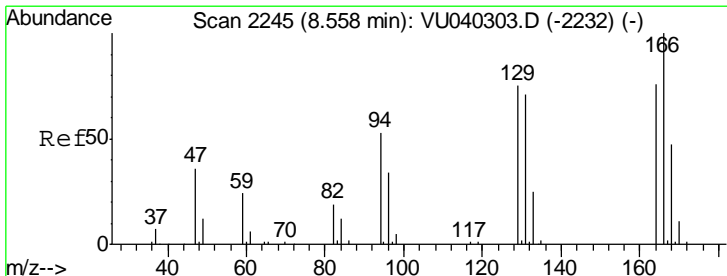
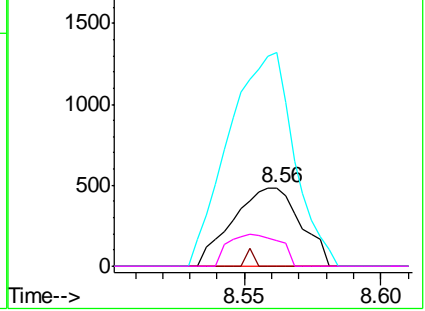
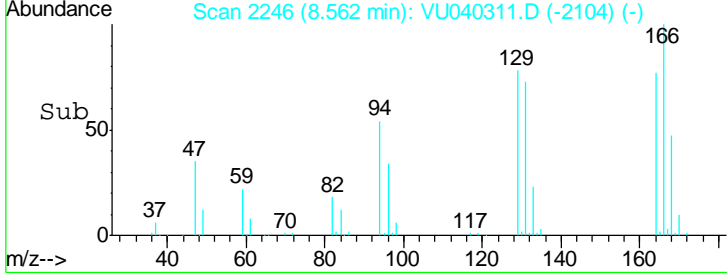
#45  
 1,1,2-Trichloroethane  
 Concen: 0.091 ug/L  
 RT: 8.56 min Scan# 2246  
 Delta R.T. 0.16 min  
 Lab File: VU040311.D  
 Acq: 25 Sep 2020 19:47

**Instrument :**  
 MSVOA\_U  
**ClientSampled :**  
 BFSB3DL

Tgt Ion	Resp	Lower	Upper
97	100		
99	0.0	43.0	79.8#
83	272.2	61.7	114.7#
85	33.0	39.3	73.1#

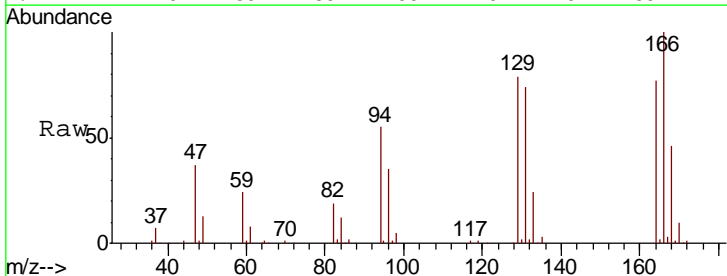


Abundance Ion 96.95 (96.65 to 97.65): VU0  
 Ion 99.05 (98.75 to 99.75): VU0  
 Ion 82.95 (82.65 to 83.65): VU0  
 Ion 85.00 (84.70 to 85.70): VU0

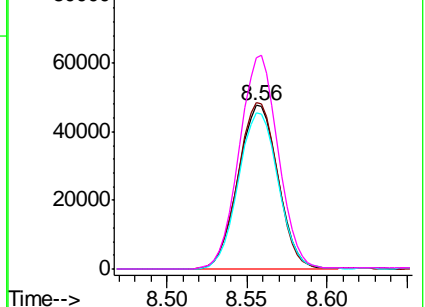
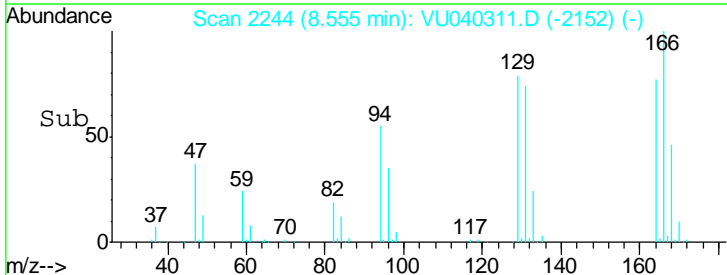


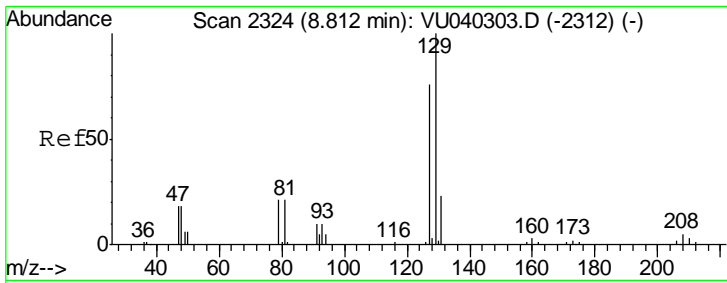
#47  
 Tetrachloroethene  
 Concen: 9.945 ug/L  
 RT: 8.56 min Scan# 2244  
 Delta R.T. -0.00 min  
 Lab File: VU040311.D  
 Acq: 25 Sep 2020 19:47

Tgt Ion	Resp	Lower	Upper
164	100		
129	102.2	71.5	132.7
131	95.4	65.9	122.5
166	129.6	87.3	162.1



Abundance Ion 163.90 (163.60 to 164.60): V  
 Ion 128.95 (128.65 to 129.65): V  
 Ion 130.95 (130.65 to 131.65): V  
 Ion 165.90 (165.60 to 166.60): V

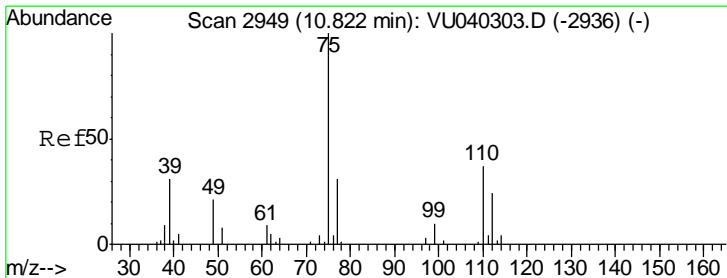
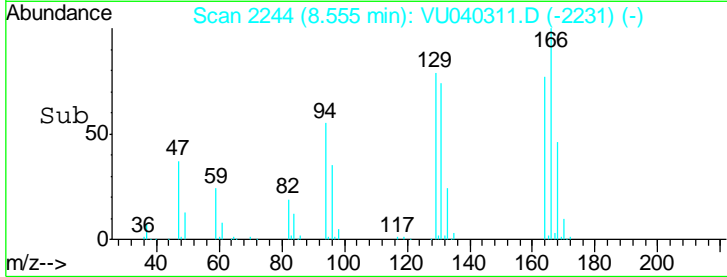
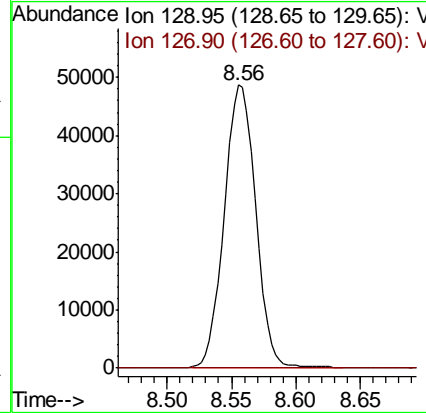
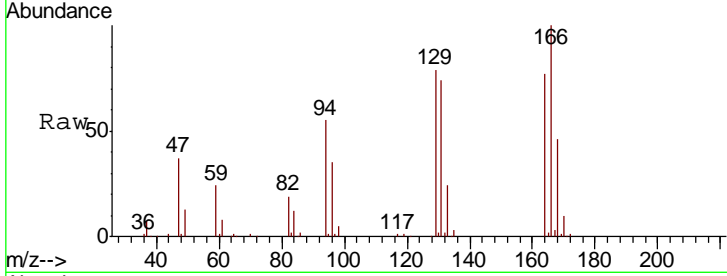




#49  
 Dibromochloromethane  
 Concen: 7.406 ug/L  
 RT: 8.56 min Scan# 2244  
 Delta R.T. -0.26 min  
 Lab File: VU040311.D  
 Acq: 25 Sep 2020 19:47

Instrument :  
 MSVOA\_U  
 ClientSampled :  
 BFSB3DL

Tgt Ion: 129 Resp: 81811  
 Ion Ratio Lower Upper  
 129 100  
 127 0.0 53.7 99.7#



#59  
 1,2,3-Trichloropropane  
 Concen: 0.831 ug/L  
 RT: 11.81 min Scan# 3256  
 Delta R.T. 0.99 min  
 Lab File: VU040311.D  
 Acq: 25 Sep 2020 19:47

Tgt Ion: 75 Resp: 7778  
 Ion Ratio Lower Upper  
 75 100  
 77 36.1 24.9 37.3

