

Data Path : Z:\VOASRV\HPCHEM1\MSVOA U\DATA\VU092620\  
 Data File : VU040307.D  
 Acq On : 25 Sep 2020 18:14  
 Operator : SY/MD  
 Sample : L4147-07  
 Misc : 25.0mL/MSVOA U/WATER  
 ALS Vial : 22 Sample Multiplier: 1

Instrument :  
 MSVOA\_U  
 ClientSampled :  
 BFSAB

Integration Parameters: rteint.p  
 Integrator: RTE  
 Smoothing : ON  
 Sampling : 1  
 Start Thrs: 0.1  
 Stop Thrs : 0

Filtering: 5  
 Min Area: 3 % of largest Peak  
 Max Peaks: 100  
 Peak Location: TOP

If leading or trailing edge < 100 prefer < Baseline drop else tangent >  
 Peak separation: 5

Method : Z:\VOASRV\HPCHEM1\MSVOA\_U\METHOD\SOMUTR083120WMA.M  
 Title : TRACE VOA SOM01.0

Signal : TIC

peak #	R.T. min	first scan	max scan	last scan	PK TY	peak height	corr. area	corr. % max.	% of total
1	1.363	3	7	17	rVB3	10808	10536	1.65%	0.243%
2	1.527	51	58	70	rVV	7176	8856	1.38%	0.204%
3	1.604	74	82	92	rVB	53180	61129	9.55%	1.407%
4	1.922	171	181	192	rVB	46284	61392	9.59%	1.414%
5	2.466	342	350	361	rVB5	4011	7150	1.12%	0.165%
6	2.578	374	385	398	rBV	88566	144014	22.50%	3.316%
7	4.662	1015	1033	1076	rBV2	78279	311257	48.63%	7.167%
8	5.083	1147	1164	1183	rBV2	85233	185721	29.02%	4.276%
9	5.742	1348	1369	1397	rBV2	168383	440668	68.85%	10.146%
10	6.263	1514	1531	1548	rBV	170229	319439	49.91%	7.355%
11	6.703	1652	1668	1686	rBV	111108	216003	33.75%	4.973%
12	7.575	1926	1939	1954	rBV	50428	89808	14.03%	2.068%
13	7.726	1970	1986	1997	rBV4	5906	11915	1.86%	0.274%
14	7.903	2026	2041	2056	rBV	181740	314805	49.18%	7.248%
15	8.186	2117	2129	2141	rBV2	33645	58025	9.07%	1.336%
16	8.555	2233	2244	2258	rBV2	111695	190457	29.76%	4.385%
17	8.642	2258	2271	2307	rVV	340041	640084	100.00%	14.738%
18	9.417	2500	2512	2529	rBV	248734	412719	64.48%	9.503%
19	10.755	2916	2928	2943	rBV2	91373	146062	22.82%	3.363%
20	11.806	3242	3255	3270	rBV	239841	385497	60.23%	8.876%
21	12.060	3325	3334	3344	rBV4	5977	9849	1.54%	0.227%
22	12.186	3362	3373	3391	rVB	194188	317761	49.64%	7.316%

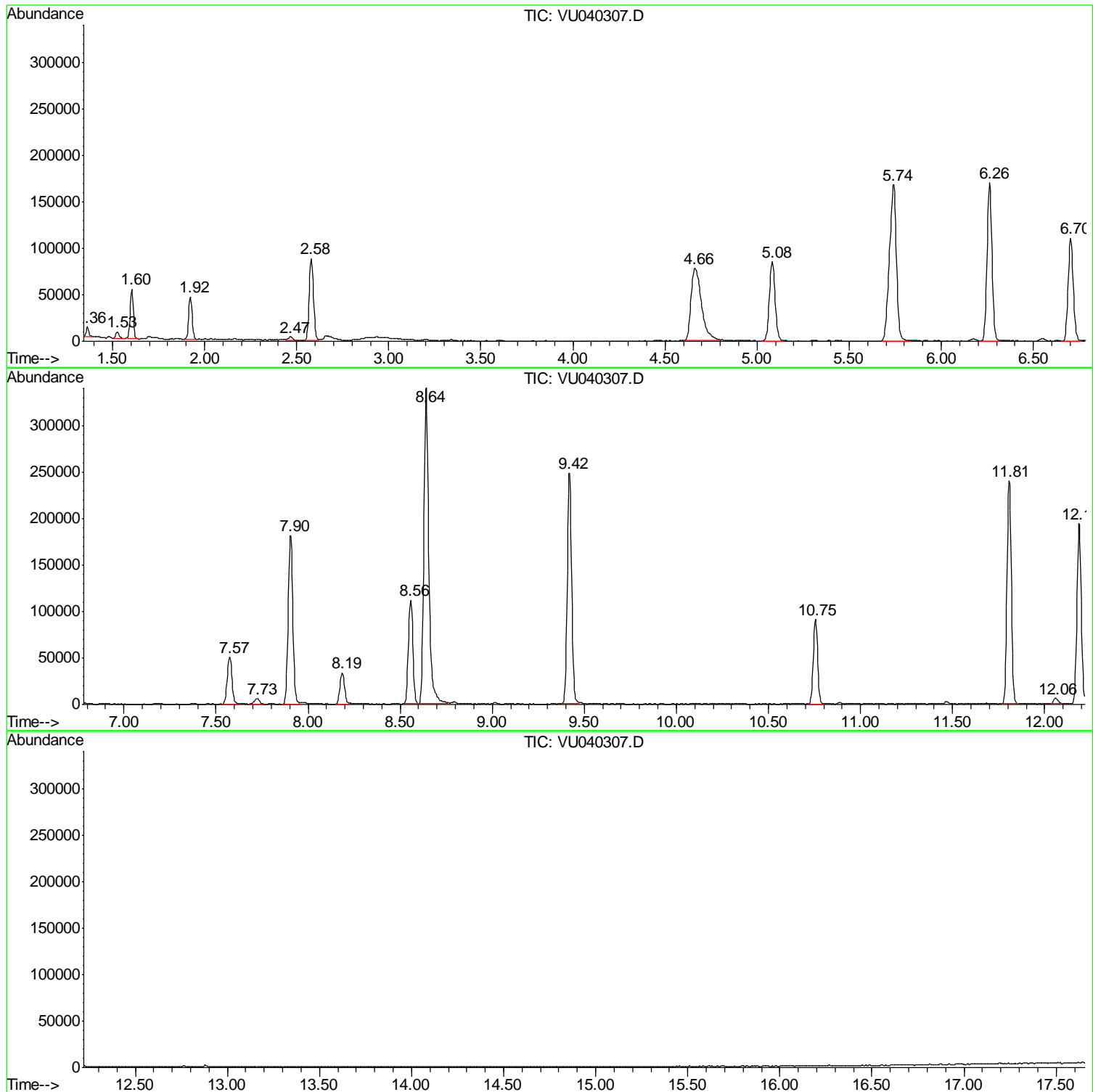
Sum of corrected areas: 4343147

Data Path : Z:\VOASRV\HPCHEM1\MSVOA U\DATA\VU092620\  
Data File : VU040307.D  
Acq On : 25 Sep 2020 18:14  
Operator : SY/MD  
Sample : L4147-07  
Misc : 25.0mL/MSVOA U/WATER  
ALS Vial : 22 Sample Multiplier: 1

Instrument :  
MSVOA\_U  
ClientSampled :  
BFSA8

Quant Method : Z:\VOASRV\HPCHEM1\MSVOA\_U\METHOD\SOMUTR083120WMA.M  
Quant Title : TRACE VOA SOM01.0

TIC Library : C:\DATABASE\NIST11.L  
TIC Integration Parameters: LSCINT.P



Data Path : Z:\VOASRV\HPCHEM1\MSVOA\_U\DATA\VU092620\  
Data File : VU040307.D  
Acq On : 25 Sep 2020 18:14  
Operator : SY/MD  
Sample : L4147-07  
Misc : 25.0mL/MSVOA\_U/WATER  
ALS Vial : 22 Sample Multiplier: 1

Instrument :  
MSVOA\_U  
ClientSampleId :  
BFSA8

Quant Method : Z:\VOASRV\HPCHEM1\MSVOA\_U\METHOD\SOMUTR083120WMA.M  
Quant Title : TRACE VOA SOM01.0

TIC Library : C:\DATABASE\NIST11.L  
TIC Integration Parameters: LSCINT.P

No Library Search Compounds Detected

\*\*\*\*\*

Data Path : Z:\VOASRV\HPCHEM1\MSVOA\_U\DATA\VU092620\  
Data File : VU040307.D  
Acq On : 25 Sep 2020 18:14  
Operator : SY/MD  
Sample : L4147-07  
Misc : 25.0mL/MSVOA\_U/WATER  
ALS Vial : 22 Sample Multiplier: 1

Instrument :  
MSVOA\_U  
ClientSampleId :  
BFSA8

Quant Method : Z:\VOASRV\HPCHEM1\MSVOA\_U\METHOD\SOMUTR083120WMA.M  
Quant Title : TRACE VOA SOM01.0

TIC Library : C:\DATABASE\NIST11.L  
TIC Integration Parameters: LSCINT.P

TIC Top Hit name	RT	EstConc	Units	Response	--Internal Standard--			
					#	RT	Resp	Conc

---