

Data Path : Z:\voasrv\HPCHEM1\MSVOA_U\Data\VU092623\
Data File : VU055538.D
Acq On : 27 Sep 2023 00:43
Operator : MD/SY
Sample : 04530-06
Misc : 25.0mL/MSVOA_U/WATER
ALS Vial : 37 Sample Multiplier: 1

Instrument :
MSVOA_U
ClientSampleId :
EYHY4

Integration Parameters: rteint.p
Integrator: RTE
Smoothing : ON Filtering: 5
Sampling : 1 Min Area: 3 % of largest Peak
Start Thrs: 0.1 Max Peaks: 100
Stop Thrs : 0 Peak Location: TOP

If leading or trailing edge < 100 prefer < Baseline drop else tangent >
Peak separation: 5

Method : Z:\voasrv\HPCHEM1\MSVOA_U\Method\SFAMUTR091923WMA.M
Title : TRACE VOA SFAM1.0

Signal : TIC: VU055538.D\data.ms

peak #	R.T. min	first scan	max scan	last scan	PK TY	peak height	corr. area	corr. % max.	% of total
1	1.599	86	96	132	rBV2	35096788	52968827	32.01%	24.247%
2	4.663	1027	1049	1076	rBV4	64572416	165485309	100.00%	75.753%

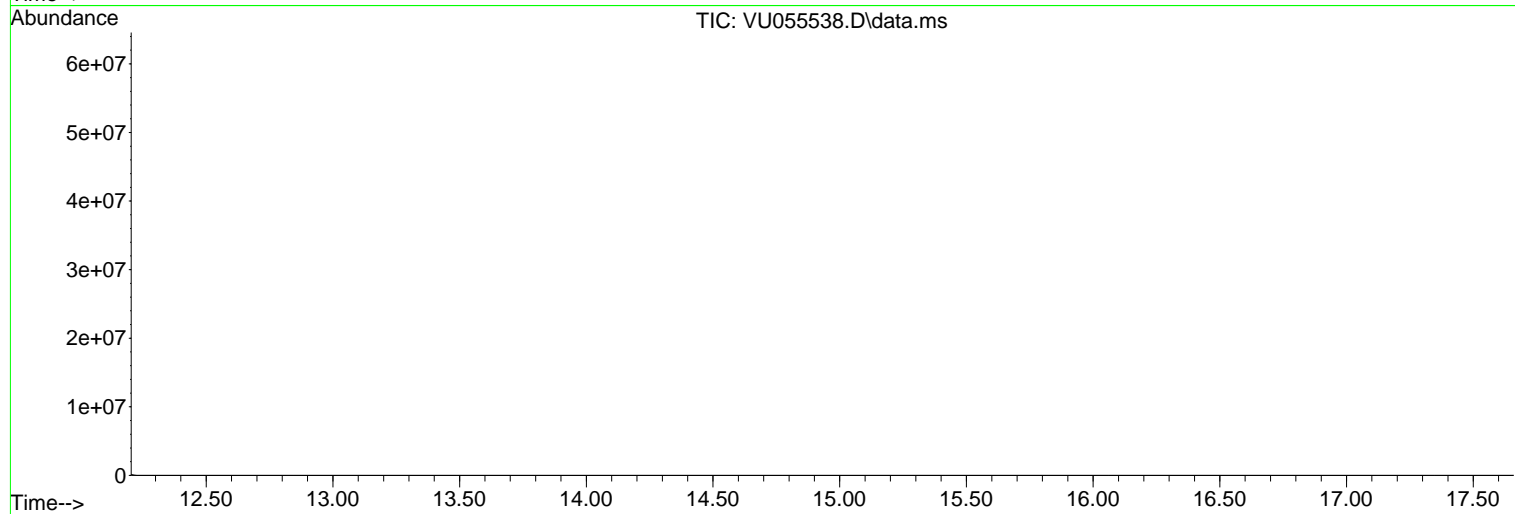
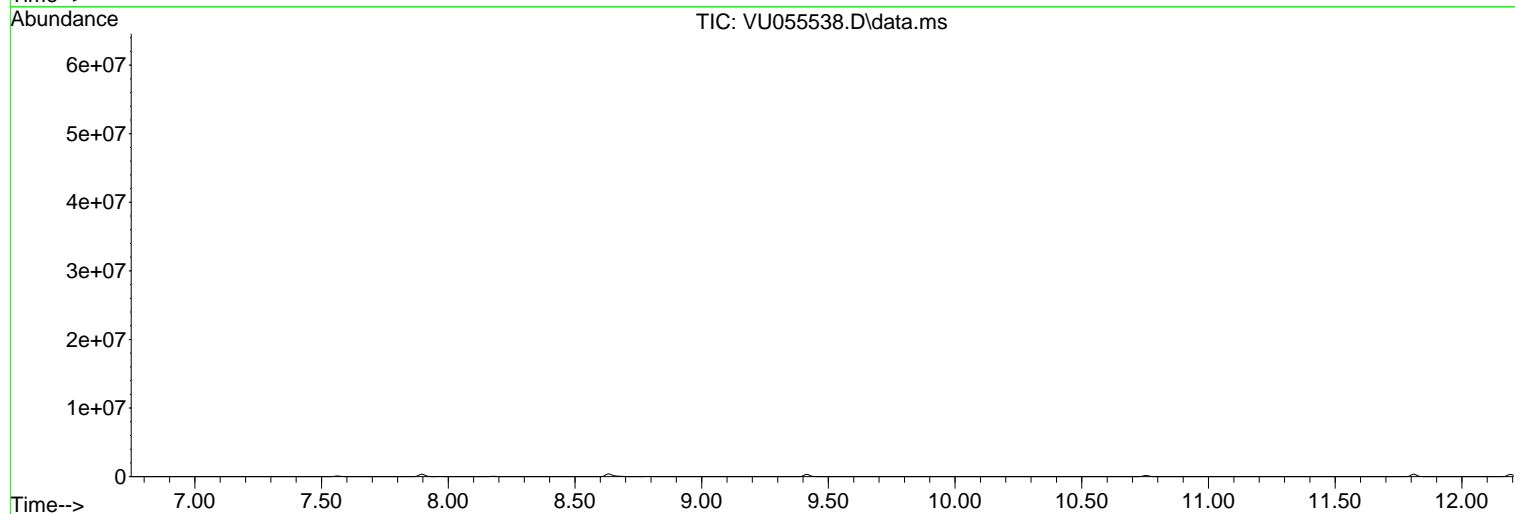
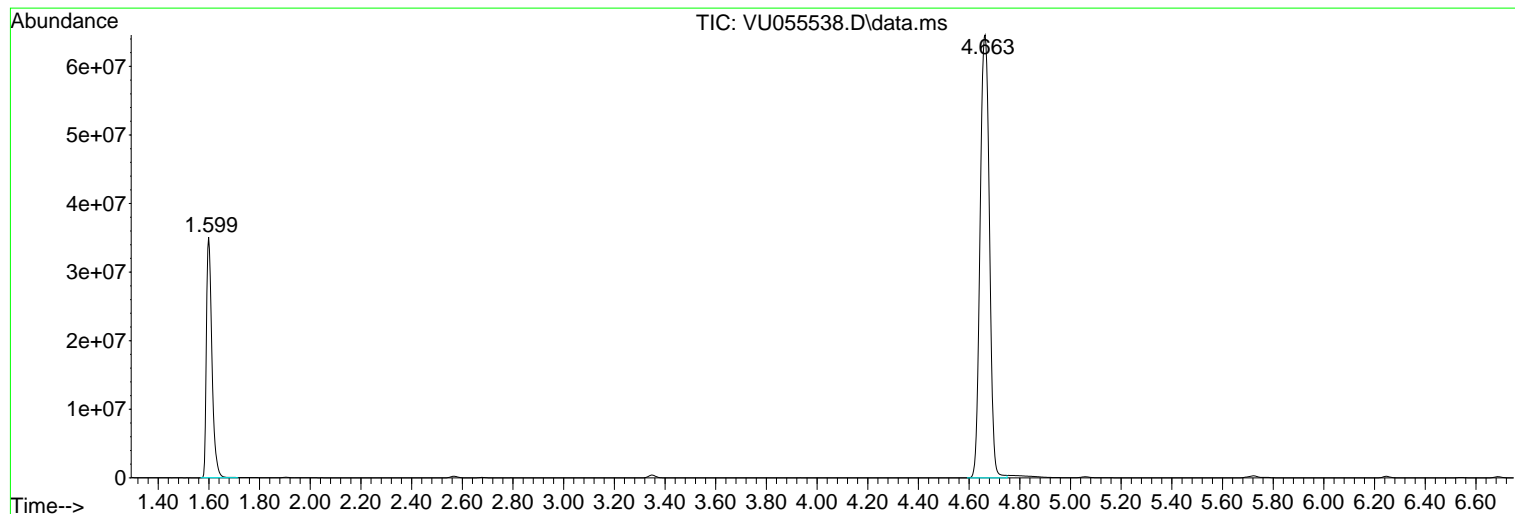
Sum of corrected areas: 218454136

Data Path : Z:\voasrv\HPCHEM1\MSVOA_U\Data\VU092623\
 Data File : VU055538.D
 Acq On : 27 Sep 2023 00:43
 Operator : MD/SY
 Sample : 04530-06
 Misc : 25.0mL/MSVOA_U/WATER
 ALS Vial : 37 Sample Multiplier: 1

Instrument :
 MSVOA_U
 ClientSampleId :
 EYHY4

Quant Method : Z:\voasrv\HPCHEM1\MSVOA_U\Method\SFAMUTR091923WMA.M
 Quant Title : TRACE VOA SFAM1.0

TIC Library : C:\Database\NIST20.L
 TIC Integration Parameters: LSCINT.P



Library Search Compound Report

Data Path : Z:\voasrv\HPCHEM1\MSVOA_U\Data\VU092623\
Data File : VU055538.D
Acq On : 27 Sep 2023 00:43
Operator : MD/SY
Sample : 04530-06
Misc : 25.0mL/MSVOA_U/WATER
ALS Vial : 37 Sample Multiplier: 1

Instrument :
MSVOA_U
ClientSampleId :
EYHY4

Quant Method : Z:\voasrv\HPCHEM1\MSVOA_U\Method\SFAMUTR091923WMA.M
Quant Title : TRACE VOA SFAM1.0

TIC Library : C:\Database\NIST20.L
TIC Integration Parameters: LSCINT.P

No Library Search Compounds Detected

Data Path : Z:\voasrv\HPCHEM1\MSVOA_U\Data\VU092623\
Data File : VU055538.D
Acq On : 27 Sep 2023 00:43
Operator : MD/SY
Sample : 04530-06
Misc : 25.0mL/MSVOA_U/WATER
ALS Vial : 37 Sample Multiplier: 1

Instrument :
MSVOA_U
ClientSampleId :
EYHY4

Quant Method : Z:\voasrv\HPCHEM1\MSVOA_U\Method\SFAMUTR091923WMA.M
Quant Title : TRACE VOA SFAM1.0

TIC Library : C:\Database\NIST20.L
TIC Integration Parameters: LSCINT.P

TIC Top Hit name	RT	EstConc	Units	Response	--Internal Standard--		
					#	RT	Resp Conc
