

Data Path : Z:\VOASRV\HPCHEM1\MSVOA U\DATA\VU092719\
 Data File : VU034873.D
 Acq On : 27 Sep 2019 16:46
 Operator : JC/SP
 Sample : K5044-09
 Misc : 25.0mL/MSVOA U/WATER
 ALS Vial : 13 Sample Multiplier: 1

Instrument :
 MSVOA_U
 ClientSampleId :
 VHBLK01

Integration Parameters: rteint.p
 Integrator: RTE
 Smoothing : ON Filtering: 5
 Sampling : 1 Min Area: 3 % of largest Peak
 Start Thrs: 0.1 Max Peaks: 100
 Stop Thrs : 0 Peak Location: TOP

If leading or trailing edge < 100 prefer < Baseline drop else tangent >
 Peak separation: 5

Method : Z:\VOASRV\HPCHEM1\MSVOA_U\METHOD\SOMUTR091819WMA.M
 Title : TRACE VOA SOM01.0

Signal : TIC

peak #	R.T. min	first scan	max scan	last scan	PK TY	peak height	corr. area	corr. % max.	% of total
1	1.389	86	93	109	rVB	48208	54244	15.83%	2.126%
2	1.672	174	181	194	rVB	41654	52694	15.38%	2.066%
3	2.257	353	363	377	rBV	79724	123438	36.03%	4.839%
4	2.682	487	495	508	rVB3	5875	11103	3.24%	0.435%
5	2.823	530	539	547	rBV	5428	10138	2.96%	0.397%
6	4.177	946	960	998	rBV2	47267	167133	48.78%	6.552%
7	4.621	1080	1098	1118	rBV2	47766	115819	33.80%	4.540%
8	5.312	1293	1313	1333	rBV2	106065	291878	85.19%	11.442%
9	5.862	1468	1484	1503	rBV	92776	181945	53.10%	7.132%
10	6.309	1610	1623	1644	rBV	67924	139082	40.59%	5.452%
11	7.209	1892	1903	1920	rBV3	30496	59951	17.50%	2.350%
12	7.543	1995	2007	2027	rBV	136197	240520	70.20%	9.428%
13	7.833	2088	2097	2120	rBV2	17712	34050	9.94%	1.335%
14	8.296	2231	2241	2269	rBV	170601	342624	100.00%	13.431%
15	9.067	2470	2481	2510	rBV	133500	234689	68.50%	9.200%
16	10.411	2888	2899	2916	rBV2	50285	84799	24.75%	3.324%
17	11.463	3215	3226	3245	rBV	119221	208998	61.00%	8.193%
18	11.839	3331	3343	3361	rBV	115110	197935	57.77%	7.759%

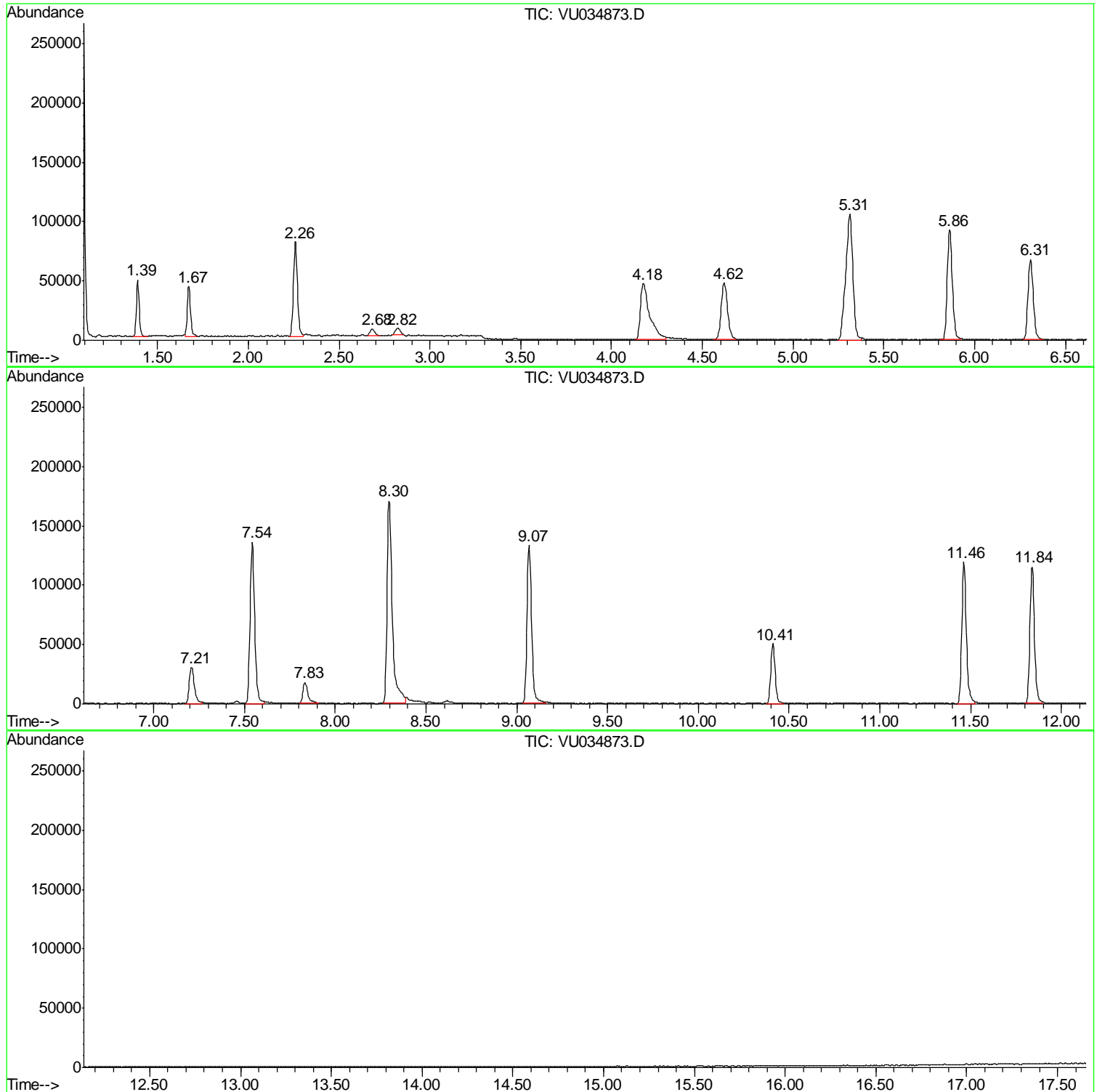
Sum of corrected areas: 2551040

Data Path : Z:\VOASRV\HPCHEM1\MSVOA U\DATA\VU092719\
Data File : VU034873.D
Acq On : 27 Sep 2019 16:46
Operator : JC/SP
Sample : K5044-09
Misc : 25.0mL/MSVOA U/WATER
ALS Vial : 13 Sample Multiplier: 1

Instrument :
MSVOA_U
ClientSampled :
VHBLK01

Quant Method : Z:\VOASRV\HPCHEM1\MSVOA_U\METHOD\SOMUTR091819WMA.M
Quant Title : TRACE VOA SOM01.0

TIC Library : C:\DATABASE\NIST11.L
TIC Integration Parameters: LSCINT.P



Data Path : Z:\VOASRV\HPCHEM1\MSVOA_U\DATA\VU092719\
Data File : VU034873.D
Acq On : 27 Sep 2019 16:46
Operator : JC/SP
Sample : K5044-09
Misc : 25.0mL/MSVOA_U/WATER
ALS Vial : 13 Sample Multiplier: 1

Instrument :
MSVOA_U
ClientSampleId :
VHBLK01

Quant Method : Z:\VOASRV\HPCHEM1\MSVOA_U\METHOD\SOMUTR091819WMA.M
Quant Title : TRACE VOA SOM01.0

TIC Library : C:\DATABASE\NIST11.L
TIC Integration Parameters: LSCINT.P

No Library Search Compounds Detected

Data Path : Z:\VOASRV\HPCHEM1\MSVOA_U\DATA\VU092719\
Data File : VU034873.D
Acq On : 27 Sep 2019 16:46
Operator : JC/SP
Sample : K5044-09
Misc : 25.0mL/MSVOA_U/WATER
ALS Vial : 13 Sample Multiplier: 1

Instrument :
MSVOA_U
ClientSampleId :
VHBLK01

Quant Method : Z:\VOASRV\HPCHEM1\MSVOA_U\METHOD\SOMUTR091819WMA.M
Quant Title : TRACE VOA SOM01.0

TIC Library : C:\DATABASE\NIST11.L
TIC Integration Parameters: LSCINT.P

TIC Top Hit name	RT	EstConc	Units	Response	--Internal Standard--			
					#	RT	Resp	Conc
