

Data Path : Z:\voasrv\HPCHEM1\MSVOA_U\Data\VU092721\
 Data File : VU044911.D
 Acq On : 28 Sep 2021 01:07
 Operator : SY/MD
 Sample : M3859-06
 Misc : 5.0mL/MSVOA_U/WATER
 ALS Vial : 31 Sample Multiplier: 1

Instrument :
 MSVOA_U
 ClientSampleId :
 1032-FB092021

Integration Parameters: RTEINT.P
 Integrator: RTE
 Smoothing : ON Filtering: 5
 Sampling : 1 Min Area: 3 % of largest Peak
 Start Thrs: 0.2 Max Peaks: 100
 Stop Thrs : 0 Peak Location: TOP

If leading or trailing edge < 100 prefer < Baseline drop else tangent >
 Peak separation: 5

Method : Z:\voasrv\HPCHEM1\MSVOA_U\Method\82U092421W.M
 Title : SW846 8260

Signal : TIC: VU044911.D\data.ms

peak #	R.T. min	first scan	max scan	last scan	PK TY	peak height	corr. area	corr. % max.	% of total
1	1.478	35	43	64	rVB2	9791	24824	2.17%	0.398%
2	2.633	390	402	422	rVB	26936	47629	4.16%	0.763%
3	2.813	436	458	481	rBV2	9274	28543	2.49%	0.457%
4	3.192	565	576	588	rBV	13620	28396	2.48%	0.455%
5	5.292	1214	1229	1242	rBV	166461	350616	30.60%	5.616%
6	5.375	1242	1255	1279	rVB	302355	618694	53.99%	9.909%
7	5.707	1343	1358	1379	rBV	205460	415043	36.22%	6.648%
8	6.253	1512	1528	1552	rBV	445220	832881	72.68%	13.340%
9	7.903	2025	2041	2056	rBV	668342	1145952	100.00%	18.354%
10	9.420	2499	2513	2536	rBV	599995	983604	85.83%	15.754%
11	10.636	2878	2891	2919	rVB	466893	735249	64.16%	11.776%
12	11.816	3245	3258	3283	rBV	597671	925995	80.81%	14.831%
13	12.066	3321	3336	3367	rBV	53424	106030	9.25%	1.698%

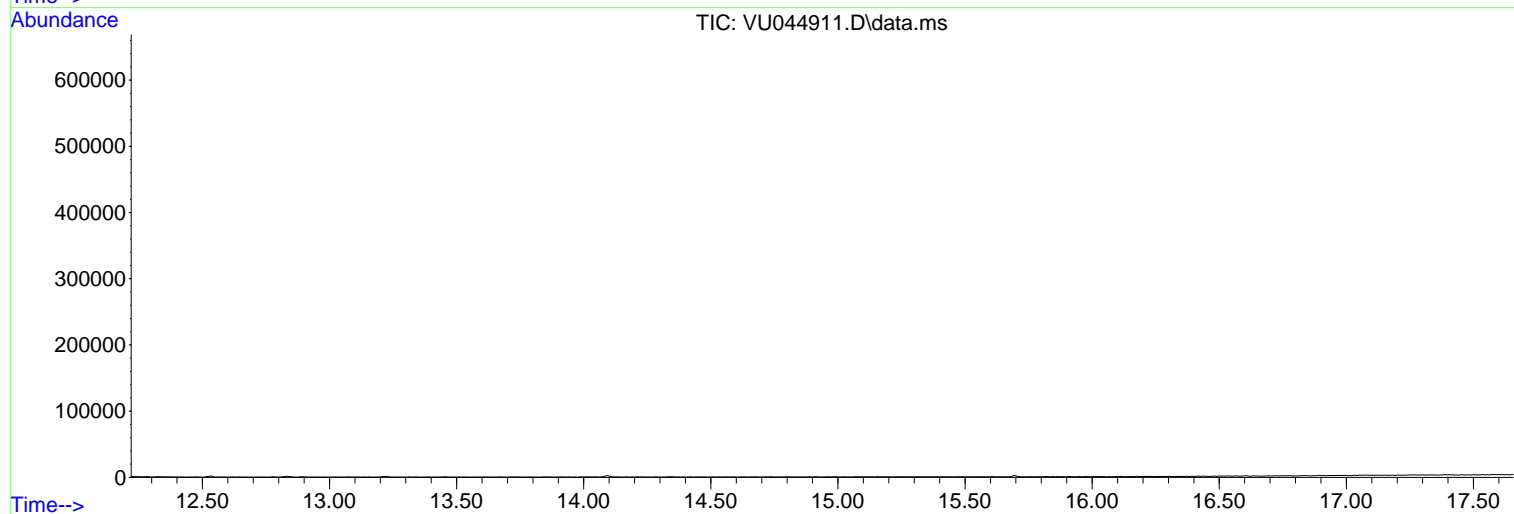
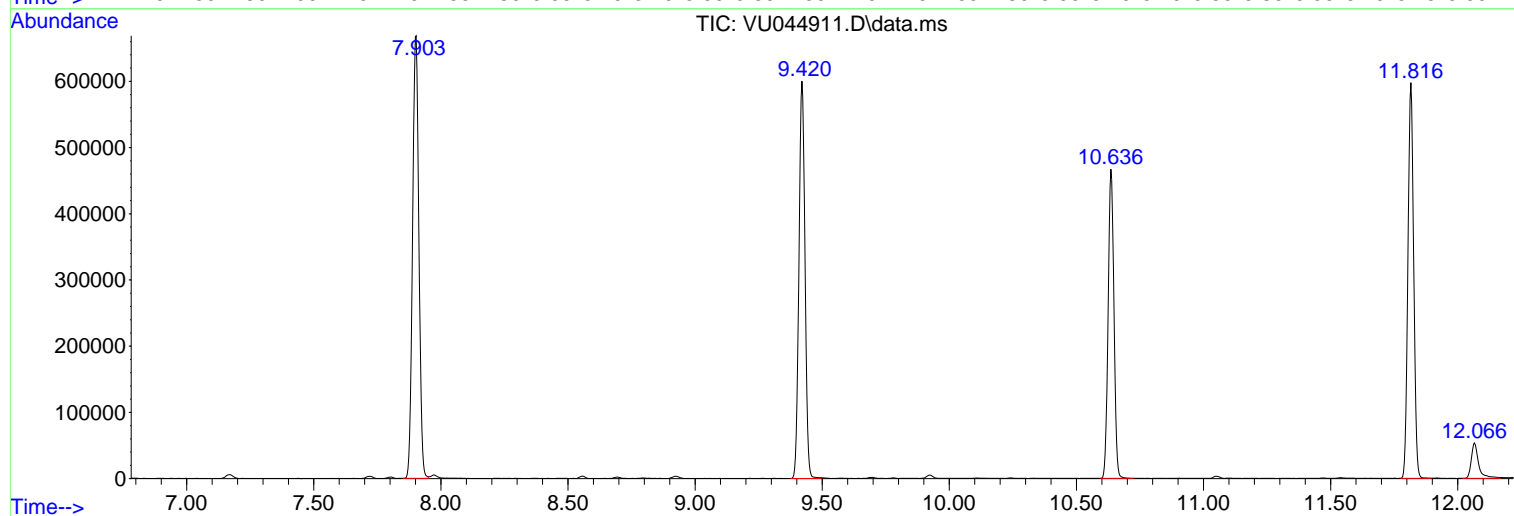
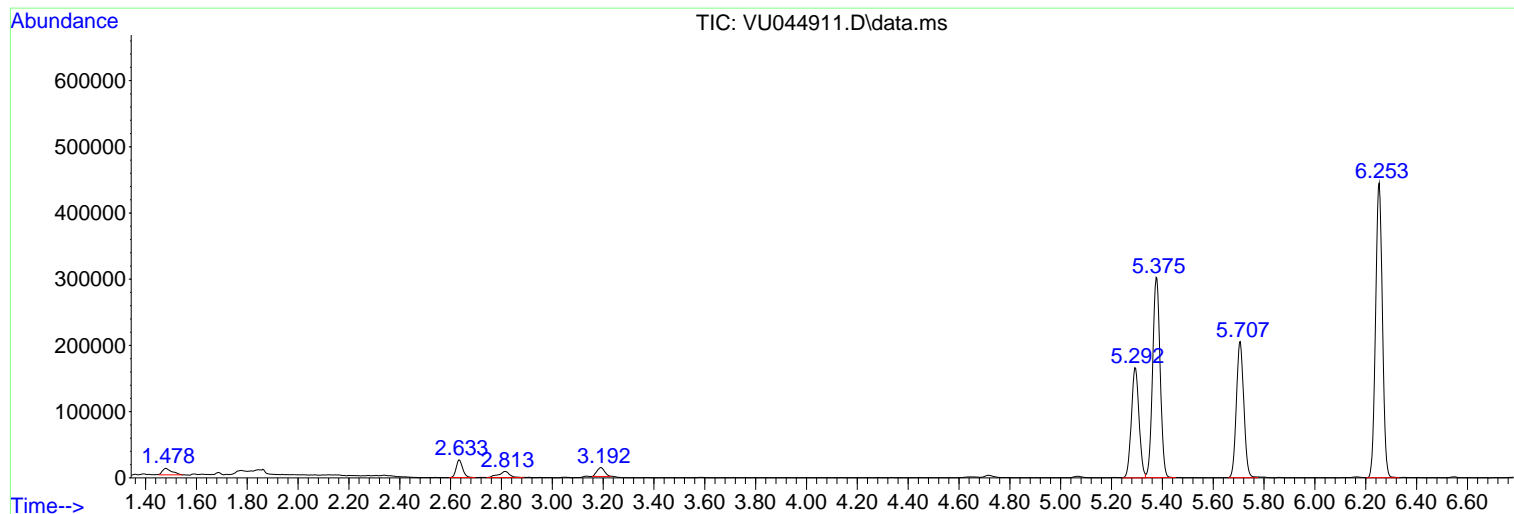
Sum of corrected areas: 6243456

Data Path : Z:\voasrv\HPCHEM1\MSVOA_U\Data\VU092721\
Data File : VU044911.D
Acq On : 28 Sep 2021 01:07
Operator : SY/MD
Sample : M3859-06
Misc : 5.0mL/MSVOA_U/WATER
ALS Vial : 31 Sample Multiplier: 1

Instrument :
MSVOA_U
ClientSampled :
1032-FB092021

Quant Method : Z:\voasrv\HPCHEM1\MSVOA_U\Method\82U092421W.M
Quant Title : SW846 8260

TIC Library : C:\Database\NIST20.L
TIC Integration Parameters: LSCINT.P



Data Path : Z:\voasrv\HPCHEM1\MSVOA_U\Data\VU092721\
 Data File : VU044911.D
 Acq On : 28 Sep 2021 01:07
 Operator : SY/MD
 Sample : M3859-06
 Misc : 5.0mL/MSVOA_U/WATER
 ALS Vial : 31 Sample Multiplier: 1

Instrument :
 MSVOA_U
 ClientSampleId :
 1032-FB092021

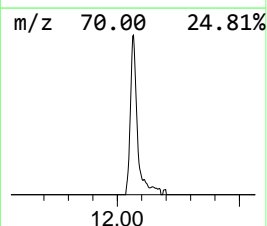
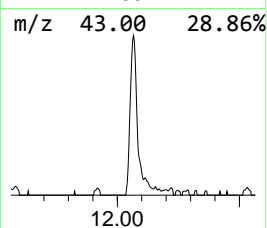
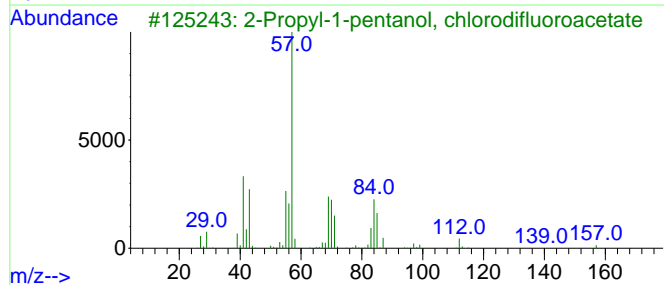
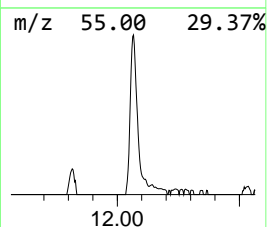
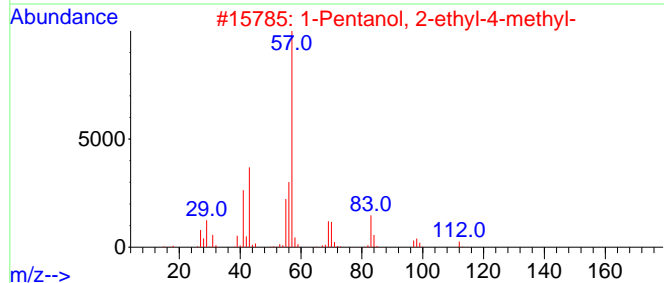
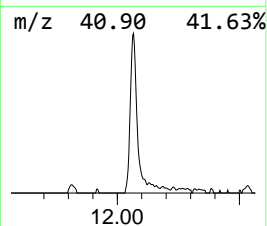
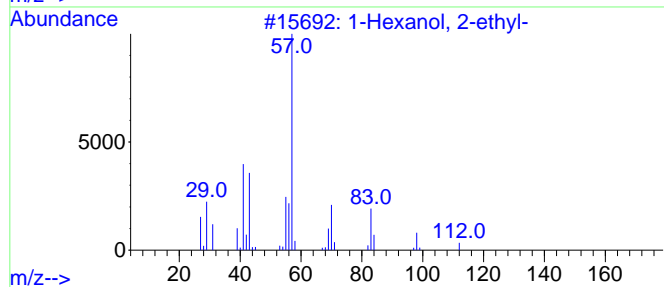
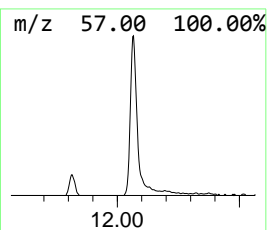
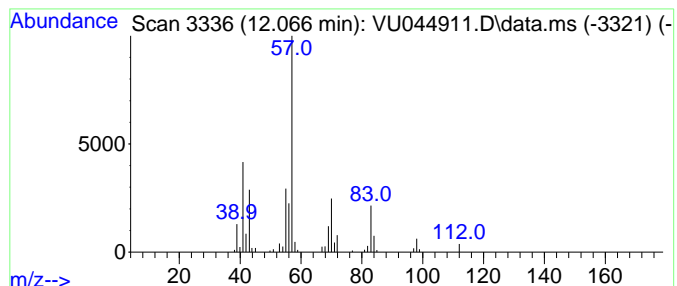
Quant Method : Z:\voasrv\HPCHEM1\MSVOA_U\Method\82U092421W.M
 Quant Title : SW846 8260

TIC Library : C:\Database\NIST20.L
 TIC Integration Parameters: LSCINT.P

 Peak Number 1 1-Hexanol, 2-ethyl- Concentration Rank 1

R.T.	EstConc	Area	Relative to ISTD	R.T.
12.066	5.73 ug/l	106030	1,4-Dichlorobenzene-d4	11.816

Hit#	of 5	Tentative ID	MW	MolForm	CAS#	Qual
1		1-Hexanol, 2-ethyl-	130	C8H18O	000104-76-7	78
2		1-Pentanol, 2-ethyl-4-methyl-	130	C8H18O	000106-67-2	56
3		2-Propyl-1-pentanol, chlorodiflu...	242	C10H17ClF2O2	1000447-27-3	50
4		2-Propyl-1-pentanol	130	C8H18O	058175-57-8	50
5		Octane, 2,3-dimethyl-	142	C10H22	007146-60-3	50



Data Path : Z:\voasrv\HPCHEM1\MSVOA_U\Data\VU092721\
Data File : VU044911.D
Acq On : 28 Sep 2021 01:07
Operator : SY/MD
Sample : M3859-06
Misc : 5.0mL/MSVOA_U/WATER
ALS Vial : 31 Sample Multiplier: 1

Instrument :
MSVOA_U
ClientSampleId :
1032-FB092021

Quant Method : Z:\voasrv\HPCHEM1\MSVOA_U\Method\82U092421W.M
Quant Title : SW846 8260

TIC Library : C:\Database\NIST20.L
TIC Integration Parameters: LSCINT.P

TIC Top Hit name	RT	EstConc	Units	Response	--Internal Standard--			
					#	RT	Resp	Conc
1-Hexanol, 2-et...	12.066	5.7	ug/l	106030	4	11.816	925995	50.0