

Data Path : Z:\voasrv\HPCHEM1\MSVOA_U\Data\VU092723\
 Data File : VU055559.D
 Acq On : 27 Sep 2023 18:24
 Operator : MD/SY
 Sample : 04530-16DL 10X
 Misc : 25.0mL/MSVOA_U/WATER
 ALS Vial : 16 Sample Multiplier: 1

Instrument :
 MSVOA_U
 ClientSampleId :

Quant Time: Sep 27 23:36:56 2023
 Quant Method : Z:\voasrv\HPCHEM1\MSVOA_U\Method\SFAMUTR091923WMA.M
 Quant Title : TRACE VOA SFAM1.0
 QLast Update : Wed Sep 27 23:33:30 2023
 Response via : Initial Calibration

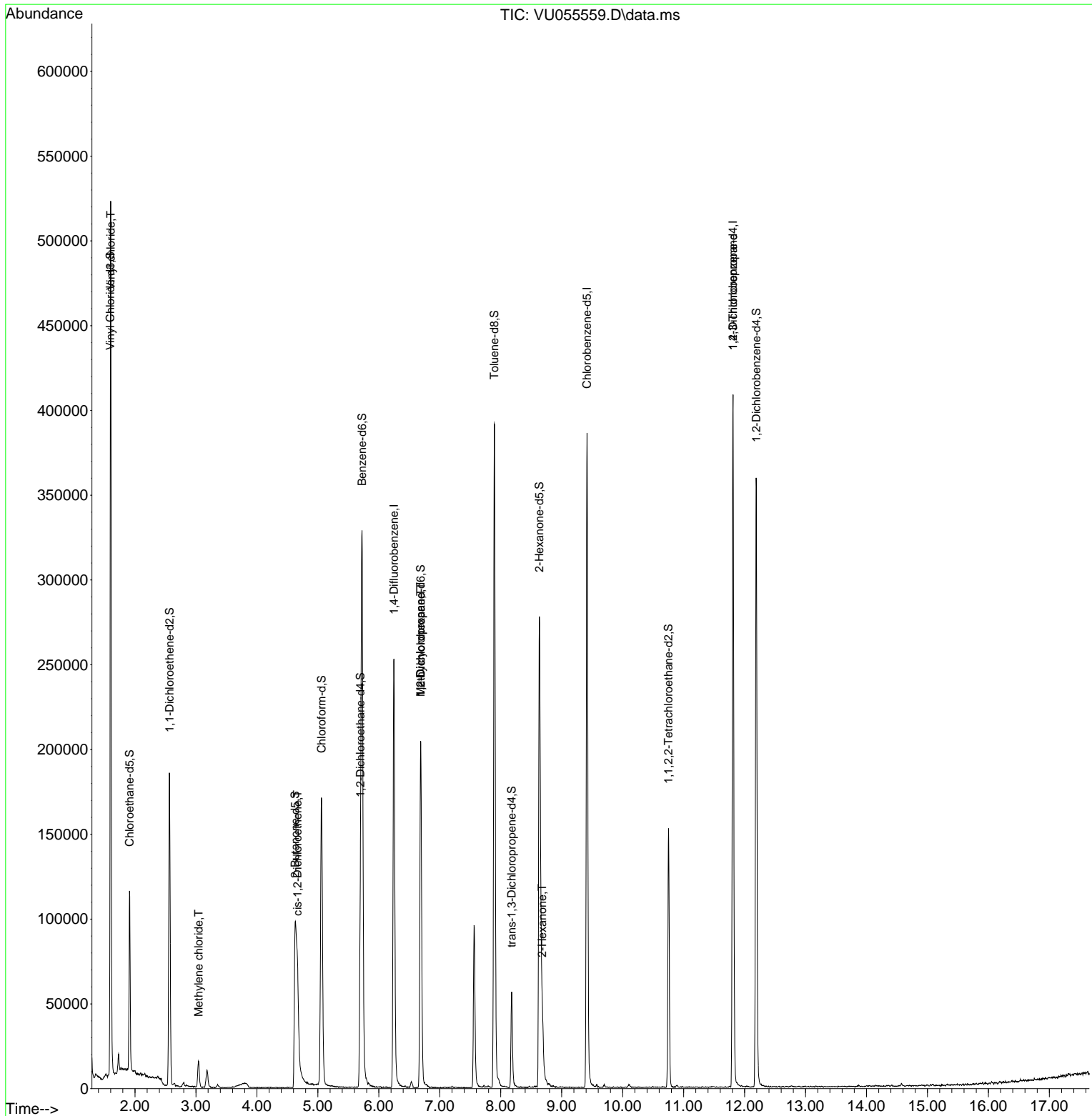
Compound	R.T.	QIon	Response	Conc	Units	Dev(Min)
Internal Standards						
1) 1,4-Difluorobenzene	6.248	114	207205	5.000	ug/L	0.00
28) Chlorobenzene-d5	9.415	117	224631	5.000	ug/L	0.00
58) 1,4-Dichlorobenzene-d4	11.811	152	111756	5.000	ug/L	0.00
System Monitoring Compounds						
4) Vinyl Chloride-d3	1.595	65	91368	4.363	ug/L	0.00
Spiked Amount	5.000	Range 40 - 130	Recovery	=	87.200%	
7) Chloroethane-d5	1.911	69	75274	4.079	ug/L	0.00
Spiked Amount	5.000	Range 65 - 130	Recovery	=	81.600%	
11) 1,1-Dichloroethene-d2	2.567	65	34765	4.033	ug/L	0.00
Spiked Amount	5.000	Range 60 - 125	Recovery	=	80.600%	
20) 2-Butanone-d5	4.628	46	163675	43.270	ug/L	0.00
Spiked Amount	50.000	Range 40 - 130	Recovery	=	86.540%	
24) Chloroform-d	5.058	84	162579	4.292	ug/L	0.00
Spiked Amount	5.000	Range 70 - 125	Recovery	=	85.800%	
26) 1,2-Dichloroethane-d4	5.698	65	79596	4.368	ug/L	0.00
Spiked Amount	5.000	Range 70 - 130	Recovery	=	87.400%	
32) Benzene-d6	5.724	84	321267	4.089	ug/L	0.00
Spiked Amount	5.000	Range 70 - 125	Recovery	=	81.800%	
36) 1,2-Dichloropropane-d6	6.685	67	100116	4.265	ug/L	0.00
Spiked Amount	5.000	Range 60 - 140	Recovery	=	85.200%	
41) Toluene-d8	7.894	98	271150	3.786	ug/L	0.00
Spiked Amount	5.000	Range 70 - 130	Recovery	=	75.800%	
43) trans-1,3-Dichloroprop...	8.180	79	33657	4.085	ug/L	0.00
Spiked Amount	5.000	Range 55 - 130	Recovery	=	81.800%	
46) 2-Hexanone-d5	8.634	63	87797	35.036	ug/L	0.00
Spiked Amount	50.000	Range 45 - 130	Recovery	=	70.080%	
56) 1,1,2,2-Tetrachloroeth...	10.753	84	75020	4.264	ug/L	0.00
Spiked Amount	5.000	Range 65 - 120	Recovery	=	85.200%	
66) 1,2-Dichlorobenzene-d4	12.193	152	95713	4.243	ug/L	0.00
Spiked Amount	5.000	Range 80 - 120	Recovery	=	84.800%	
Target Compounds						
5) Vinyl chloride	1.602	62	282316	14.745	ug/L	100
16) Methylene chloride	3.042	84	7603	0.438	ug/L	96
22) cis-1,2-Dichloroethene	4.666	96	21920	1.295	ug/L	95
35) Methylcyclohexane	6.685	83	24537	0.931	ug/L #	20
37) 1,2-Dichloropropane	6.685	63	10798	0.639	ug/L #	88
48) 2-Hexanone	8.682	43	21808	3.669	ug/L #	70
61) 1,2,3-Trichloropropane	11.811	75	13802	1.582	ug/L #	67

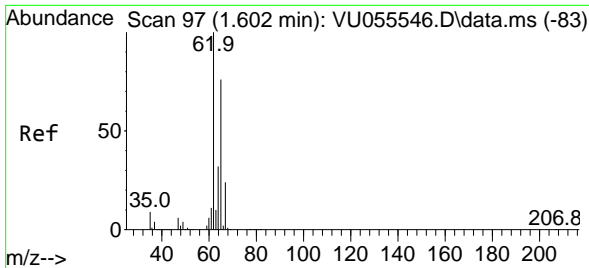
(#) = qualifier out of range (m) = manual integration (+) = signals summed

Data Path : Z:\voasrv\HPCHEM1\MSVOA_U\Data\VU092723\
 Data File : VU055559.D
 Acq On : 27 Sep 2023 18:24
 Operator : MD/SY
 Sample : 04530-16DL 10X
 Misc : 25.0mL/MSVOA_U/WATER
 ALS Vial : 16 Sample Multiplier: 1

Instrument :
 MSVOA_U
 ClientSampleId :

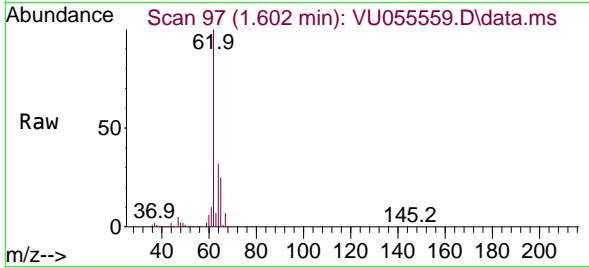
Quant Time: Sep 27 23:36:56 2023
 Quant Method : Z:\voasrv\HPCHEM1\MSVOA_U\Method\SFAMUTR091923WMA.M
 Quant Title : TRACE VOA SFAM1.0
 QLast Update : Wed Sep 27 23:33:30 2023
 Response via : Initial Calibration



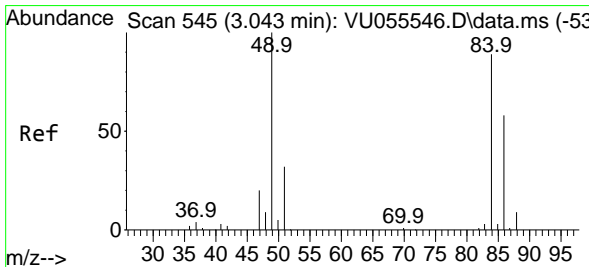
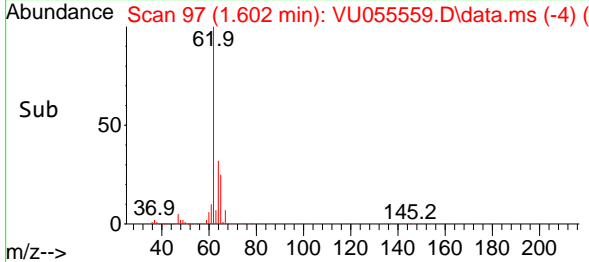
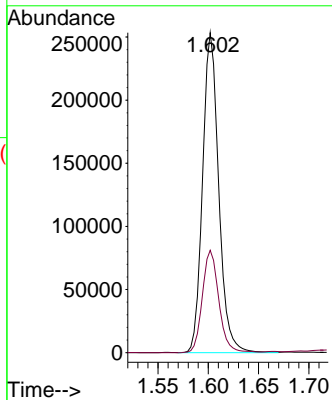


#5
 Vinyl chloride
 Concen: 14.745 ug/L
 RT: 1.602 min Scan# 91
 Delta R.T. -0.000 min
 Lab File: VU055559.D
 Acq: 27 Sep 2023 18:24

Instrument :
 MSVOA_U
 ClientSampleId :

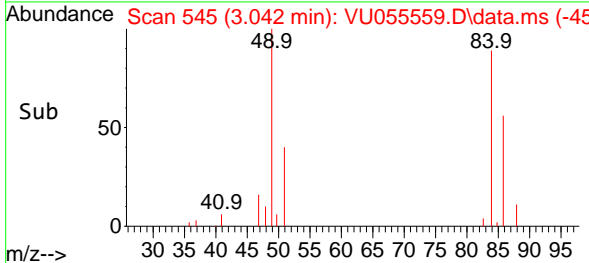
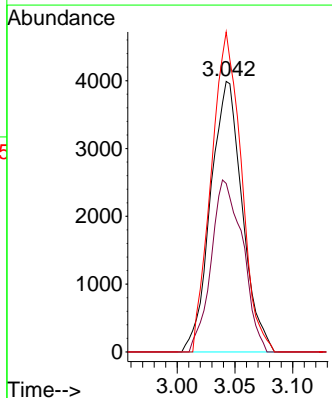
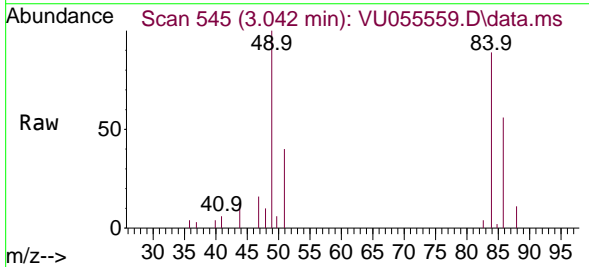


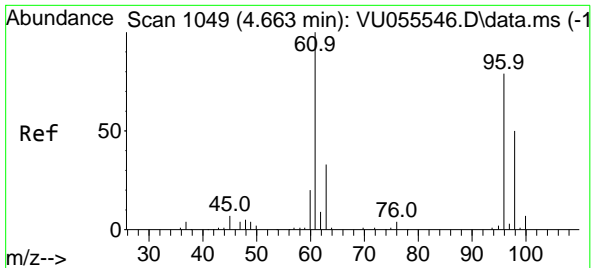
Tgt Ion: 62 Resp: 282316
 Ion Ratio Lower Upper
 62 100
 64 32.0 22.3 41.5



#16
 Methylene chloride
 Concen: 0.438 ug/L
 RT: 3.042 min Scan# 545
 Delta R.T. -0.000 min
 Lab File: VU055559.D
 Acq: 27 Sep 2023 18:24

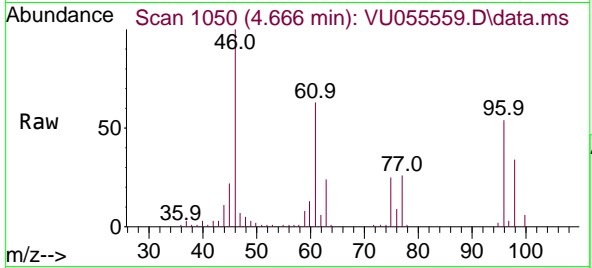
Tgt Ion: 84 Resp: 7603
 Ion Ratio Lower Upper
 84 100
 86 62.3 44.9 83.3
 49 118.3 78.8 146.3



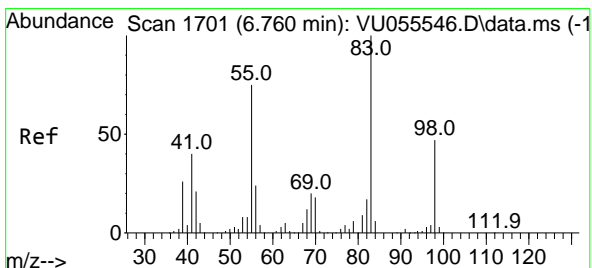
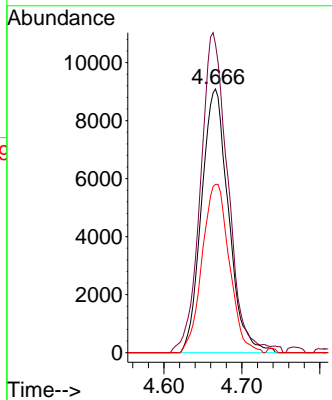
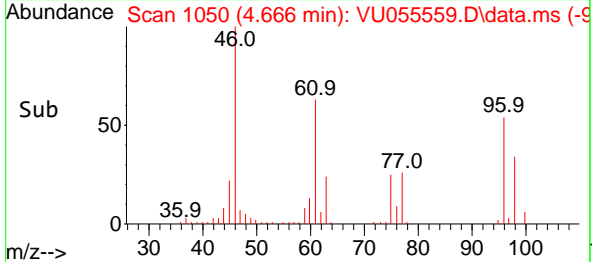


#22
 cis-1,2-Dichloroethene
 Concen: 1.295 ug/L
 RT: 4.666 min Scan# 1049
 Delta R.T. 0.003 min
 Lab File: VU055559.D
 Acq: 27 Sep 2023 18:24

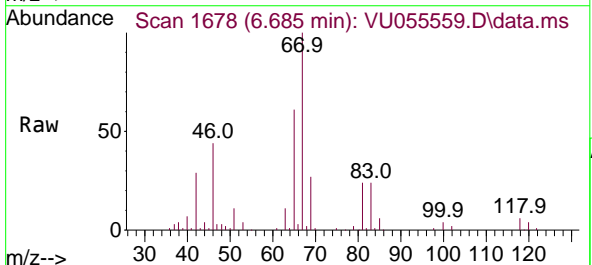
Instrument : MSVOA_U
 ClientSampleId :



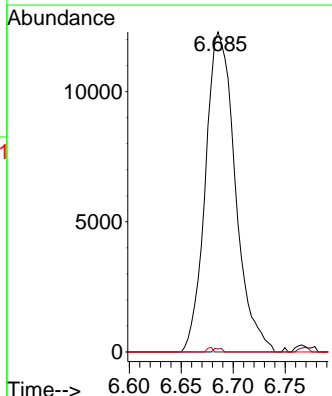
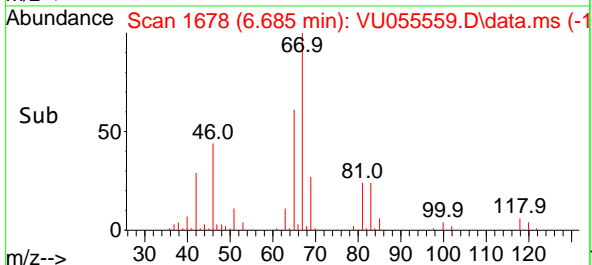
Tgt Ion: 96 Resp: 21920
 Ion Ratio Lower Upper
 96 100
 61 117.0 87.8 163.2
 98 63.9 44.4 82.4

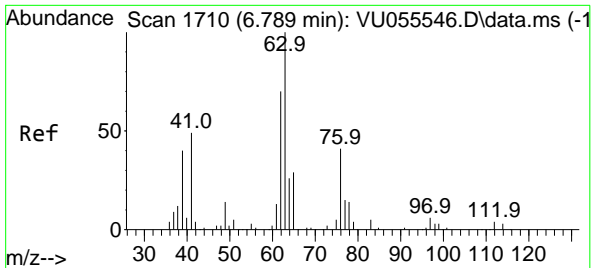


#35
 Methylcyclohexane
 Concen: 0.931 ug/L
 RT: 6.685 min Scan# 1678
 Delta R.T. -0.074 min
 Lab File: VU055559.D
 Acq: 27 Sep 2023 18:24



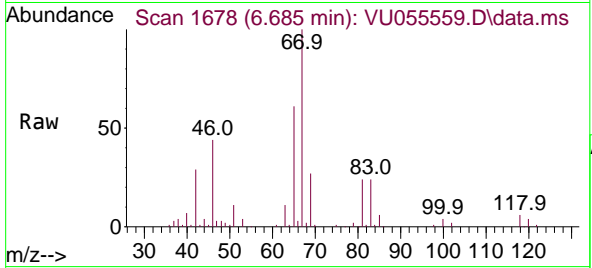
Tgt Ion: 83 Resp: 24537
 Ion Ratio Lower Upper
 83 100
 55 0.3 59.1 88.7#
 98 0.3 36.3 54.5#



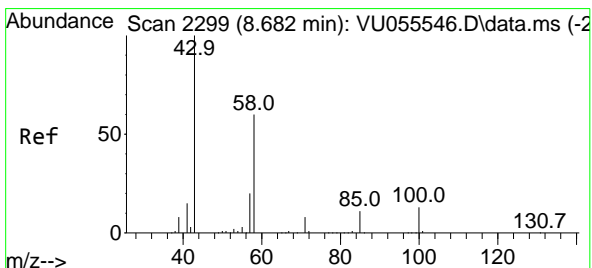
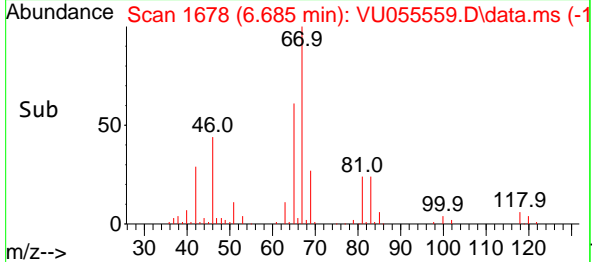
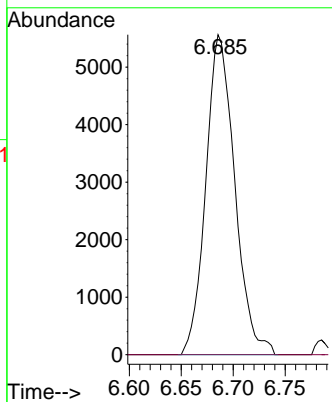


#37
 1,2-Dichloropropane
 Concen: 0.639 ug/L
 RT: 6.685 min Scan# 1
 Delta R.T. -0.103 min
 Lab File: VU055559.D
 Acq: 27 Sep 2023 18:24

Instrument :
 MSVOA_U
 ClientSampleId :

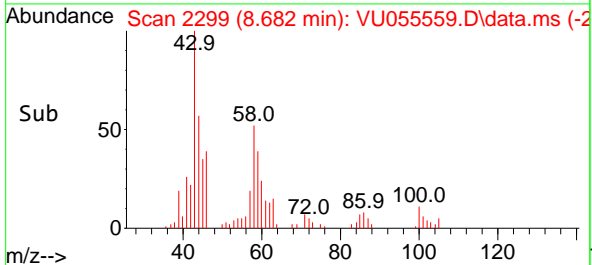
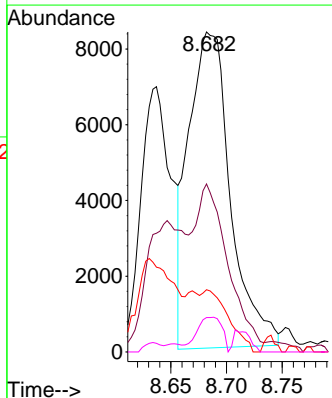
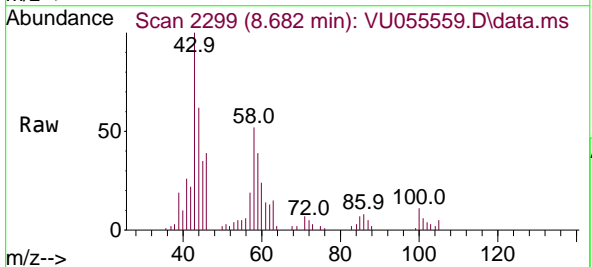


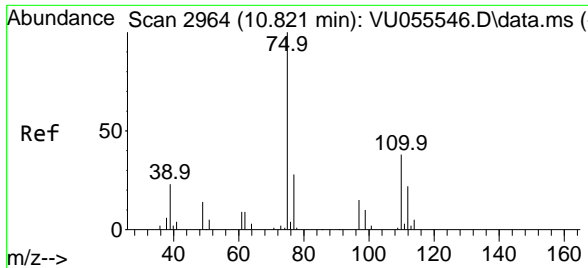
Tgt Ion: 63 Resp: 10798
 Ion Ratio Lower Upper
 63 100
 112 0.0 3.0 4.6#



#48
 2-Hexanone
 Concen: 3.669 ug/L
 RT: 8.682 min Scan# 2299
 Delta R.T. -0.000 min
 Lab File: VU055559.D
 Acq: 27 Sep 2023 18:24

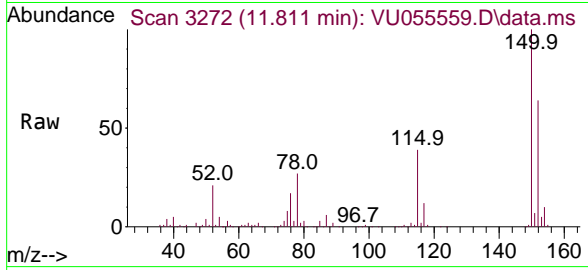
Tgt Ion: 43 Resp: 21808
 Ion Ratio Lower Upper
 43 100
 58 39.4 48.5 72.7#
 57 0.0 17.0 25.4#
 100 6.7 10.3 15.5#





#61
 1,2,3-Trichloropropane
 Concen: 1.582 ug/L
 RT: 11.811 min Scan# 31
 Delta R.T. 0.990 min
 Lab File: VU055559.D
 Acq: 27 Sep 2023 18:24

Instrument :
 MSVOA_U
 ClientSampleId :



Tgt Ion: 75 Resp: 13802

Ion	Ratio	Lower	Upper
75	100		
110	1.0	30.6	45.8#
77	34.0	26.7	40.1

