

Data Path : Z:\voasrv\HPCHEM1\MSVOA_U\Data\VU092723\
 Data File : VU055556.D
 Acq On : 27 Sep 2023 17:11
 Operator : MD/SY
 Sample : 04530-18
 Misc : 25.0mL/MSVOA_U/WATER
 ALS Vial : 13 Sample Multiplier: 1

Instrument :
 MSVOA_U
 ClientSampleId :
 EYJ07

Quant Time: Sep 27 23:36:14 2023
 Quant Method : Z:\voasrv\HPCHEM1\MSVOA_U\Method\SFAMUTR091923WMA.M
 Quant Title : TRACE VOA SFAM1.0
 QLast Update : Wed Sep 27 23:33:30 2023
 Response via : Initial Calibration

Compound	R.T.	QIon	Response	Conc	Units	Dev(Min)

Internal Standards						
1) 1,4-Difluorobenzene	6.245	114	157788	5.000	ug/L	0.00
28) Chlorobenzene-d5	9.415	117	172915	5.000	ug/L	0.00
58) 1,4-Dichlorobenzene-d4	11.811	152	87657	5.000	ug/L	0.00
System Monitoring Compounds						
4) Vinyl Chloride-d3	1.596	65	82559	5.177	ug/L	0.00
Spiked Amount	5.000	Range 40 - 130	Recovery	=	103.600%	
7) Chloroethane-d5	1.911	69	66897	4.760	ug/L	0.00
Spiked Amount	5.000	Range 65 - 130	Recovery	=	95.200%	
11) 1,1-Dichloroethene-d2	2.567	65	32097	4.890	ug/L	0.00
Spiked Amount	5.000	Range 60 - 125	Recovery	=	97.800%	
20) 2-Butanone-d5	4.618	46	182774	63.452	ug/L	-0.01
Spiked Amount	50.000	Range 40 - 130	Recovery	=	126.900%	
24) Chloroform-d	5.059	84	149203	5.173	ug/L	0.00
Spiked Amount	5.000	Range 70 - 125	Recovery	=	103.400%	
26) 1,2-Dichloroethane-d4	5.698	65	79125	5.703	ug/L	0.00
Spiked Amount	5.000	Range 70 - 130	Recovery	=	114.000%	
32) Benzene-d6	5.724	84	285969	4.728	ug/L	0.00
Spiked Amount	5.000	Range 70 - 125	Recovery	=	94.600%	
36) 1,2-Dichloropropane-d6	6.689	67	92492	5.118	ug/L	0.00
Spiked Amount	5.000	Range 60 - 140	Recovery	=	102.400%	
41) Toluene-d8	7.895	98	245355	4.451	ug/L	0.00
Spiked Amount	5.000	Range 70 - 130	Recovery	=	89.000%	
43) trans-1,3-Dichloroprop...	8.177	79	32570	5.136	ug/L	0.00
Spiked Amount	5.000	Range 55 - 130	Recovery	=	102.800%	
46) 2-Hexanone-d5	8.631	63	106209	55.060	ug/L	0.00
Spiked Amount	50.000	Range 45 - 130	Recovery	=	110.120%	
56) 1,1,2,2-Tetrachloroeth...	10.753	84	82769	6.111	ug/L	0.00
Spiked Amount	5.000	Range 65 - 120	Recovery	=	122.200%#	
66) 1,2-Dichlorobenzene-d4	12.190	152	92510	5.229	ug/L	0.00
Spiked Amount	5.000	Range 80 - 120	Recovery	=	104.600%	

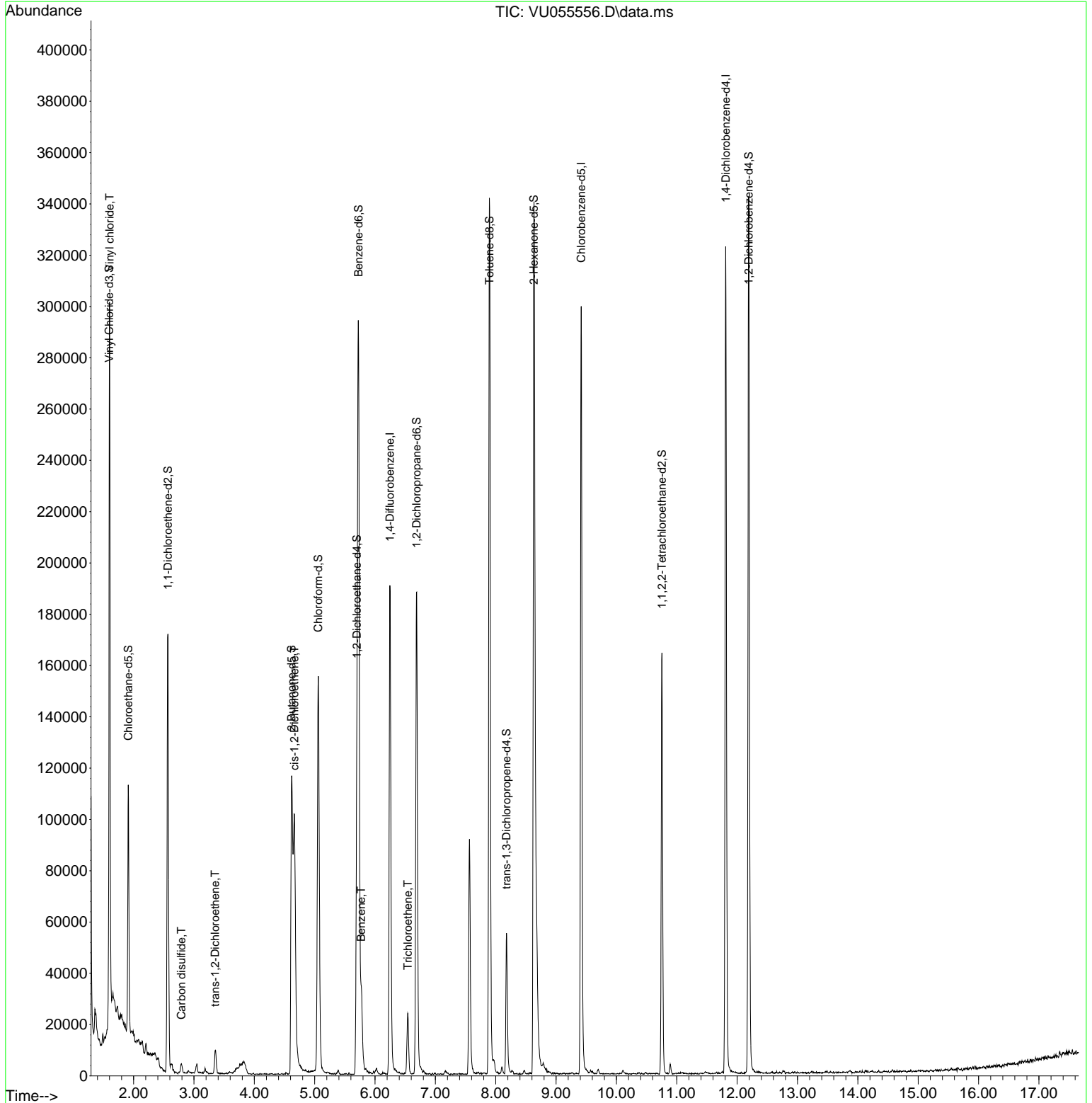
Target Compounds						Qvalue
5) Vinyl chloride	1.602	62	125074	8.579	ug/L	90
14) Carbon disulfide	2.792	76	4959	0.150	ug/L	99
18) trans-1,2-Dichloroethene	3.351	96	4326	0.389	ug/L	93
22) cis-1,2-Dichloroethene	4.663	96	44799	3.475	ug/L	98
33) Benzene	5.772	78	27059	0.544	ug/L	100
34) Trichloroethene	6.544	95	8004	0.569	ug/L	87

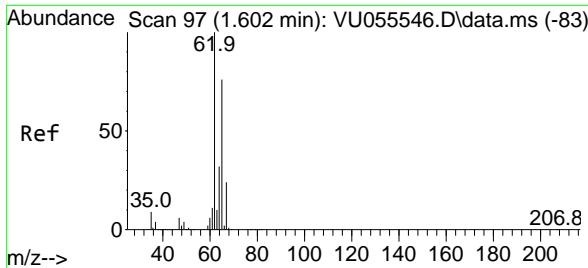
(#) = qualifier out of range (m) = manual integration (+) = signals summed

Data Path : Z:\voasrv\HPCHEM1\MSVOA_U\Data\VU092723\
 Data File : VU055556.D
 Acq On : 27 Sep 2023 17:11
 Operator : MD/SY
 Sample : 04530-18
 Misc : 25.0mL/MSVOA_U/WATER
 ALS Vial : 13 Sample Multiplier: 1

Instrument :
 MSVOA_U
 ClientSampleId :
 EYJ07

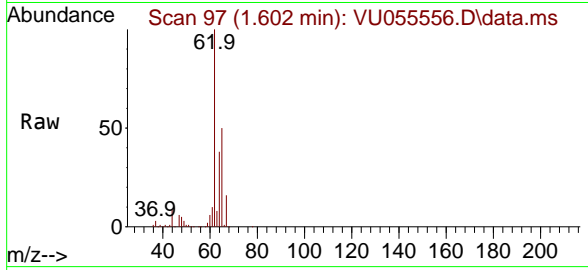
Quant Time: Sep 27 23:36:14 2023
 Quant Method : Z:\voasrv\HPCHEM1\MSVOA_U\Method\SFAMUTR091923WMA.M
 Quant Title : TRACE VOA SFAM1.0
 QLast Update : Wed Sep 27 23:33:30 2023
 Response via : Initial Calibration



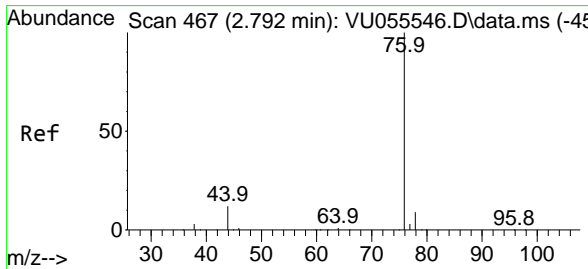
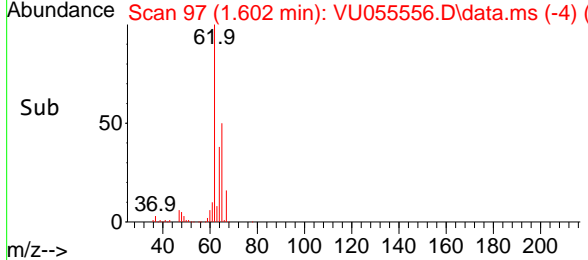
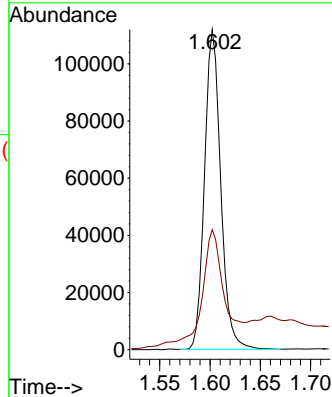


#5
 Vinyl chloride
 Concen: 8.579 ug/L
 RT: 1.602 min Scan# 91
 Delta R.T. -0.000 min
 Lab File: VU055556.D
 Acq: 27 Sep 2023 17:11

Instrument : MSVOA_U
 ClientSampleId : EYJ07

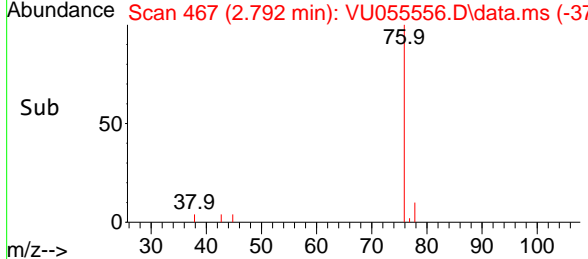
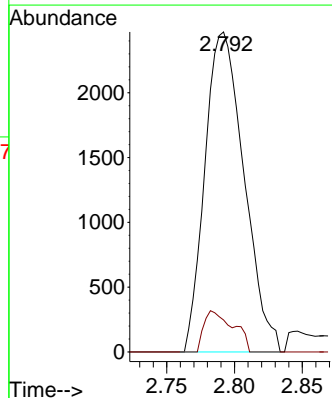
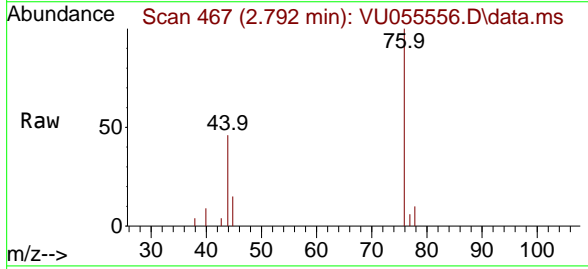


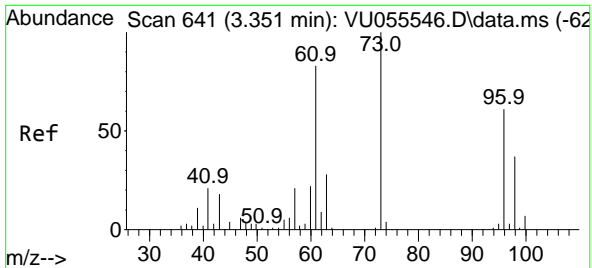
Tgt Ion: 62 Resp: 125074
 Ion Ratio Lower Upper
 62 100
 64 37.5 22.3 41.5



#14
 Carbon disulfide
 Concen: 0.150 ug/L
 RT: 2.792 min Scan# 467
 Delta R.T. -0.000 min
 Lab File: VU055556.D
 Acq: 27 Sep 2023 17:11

Tgt Ion: 76 Resp: 4959
 Ion Ratio Lower Upper
 76 100
 78 10.0 7.7 11.5

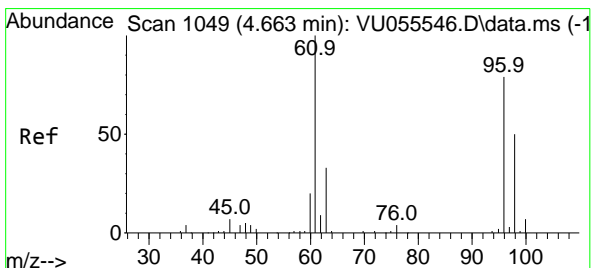
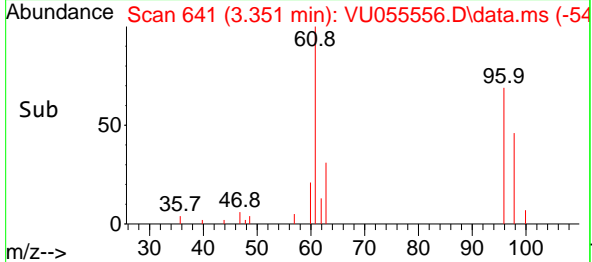
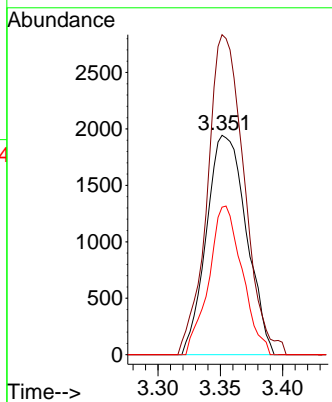
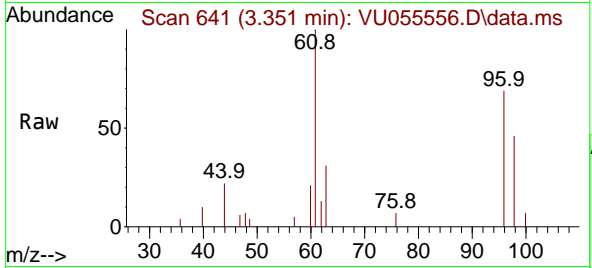




#18
 trans-1,2-Dichloroethene
 Concen: 0.389 ug/L
 RT: 3.351 min Scan# 641
 Delta R.T. -0.000 min
 Lab File: VU055556.D
 Acq: 27 Sep 2023 17:11

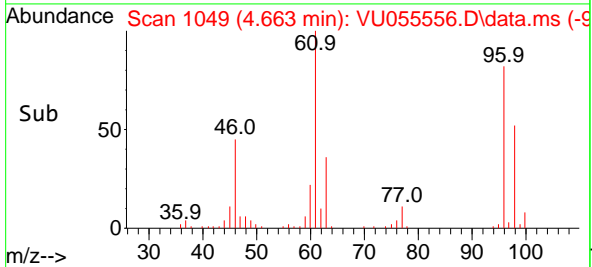
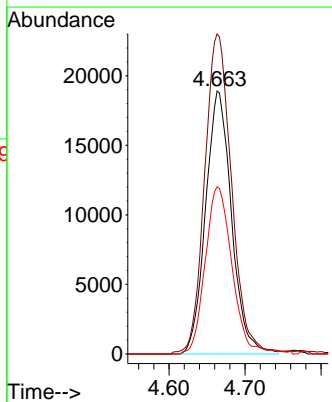
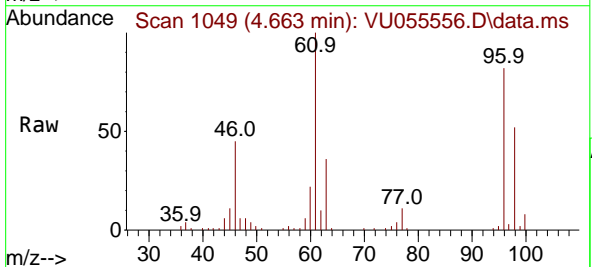
Instrument : MSVOA_U
 ClientSampleId : EYJ07

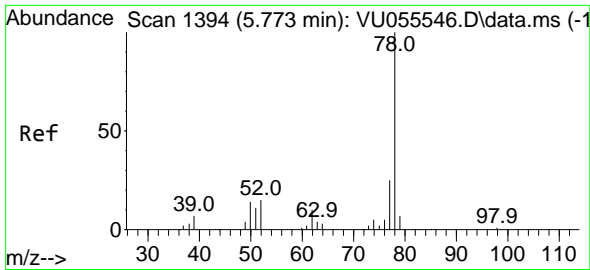
Tgt Ion	Resp	Lower	Upper
96	4326		
96	100		
61	145.8	94.6	175.6
98	67.2	45.7	84.9



#22
 cis-1,2-Dichloroethene
 Concen: 3.475 ug/L
 RT: 4.663 min Scan# 1049
 Delta R.T. -0.000 min
 Lab File: VU055556.D
 Acq: 27 Sep 2023 17:11

Tgt Ion	Resp	Lower	Upper
96	44799		
96	100		
61	121.7	87.8	163.2
98	63.5	44.4	82.4

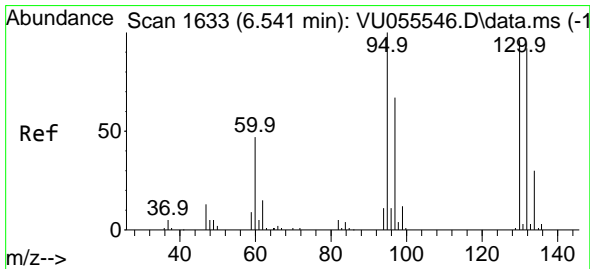
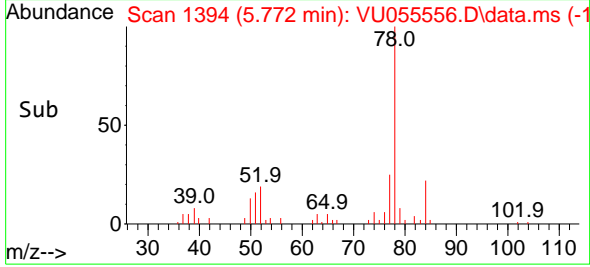
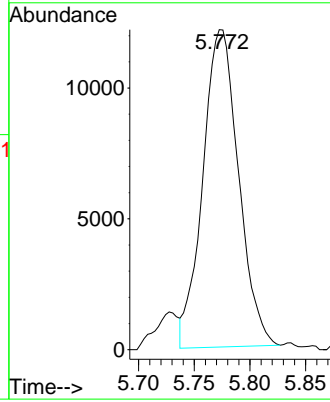
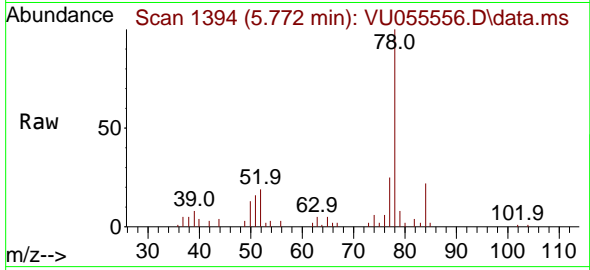




#33
Benzene
Concen: 0.544 ug/L
RT: 5.772 min Scan# 11
Delta R.T. -0.000 min
Lab File: VU055556.D
Acq: 27 Sep 2023 17:11

Instrument : MSVOA_U
ClientSampleId : EYJ07

Tgt Ion: 78 Resp: 27059



#34
Trichloroethene
Concen: 0.569 ug/L
RT: 6.544 min Scan# 1634
Delta R.T. 0.003 min
Lab File: VU055556.D
Acq: 27 Sep 2023 17:11

Tgt Ion: 95 Resp: 8004

Ion	Ratio	Lower	Upper
95	100		
97	60.1	45.4	84.2
132	74.9	65.2	121.2
130	87.6	69.1	128.3

