

Data Path : Z:\voasrv\HPCHEM1\MSVOA\_U\Data\VU092821\  
 Data File : VU044942.D  
 Acq On : 28 Sep 2021 15:32  
 Operator : SY/MD  
 Sample : M3954-01  
 Misc : 5.0mL/MSVOA\_U/WATER  
 ALS Vial : 15 Sample Multiplier: 1

Instrument :  
 MSVOA\_U  
 ClientSampleId :  
 P287-DITCH

Quant Time: Sep 28 15:55:11 2021  
 Quant Method : Z:\voasrv\HPCHEM1\MSVOA\_U\Method\82U092821W.M  
 Quant Title : SW846 8260  
 QLast Update : Tue Sep 28 12:32:13 2021  
 Response via : Initial Calibration

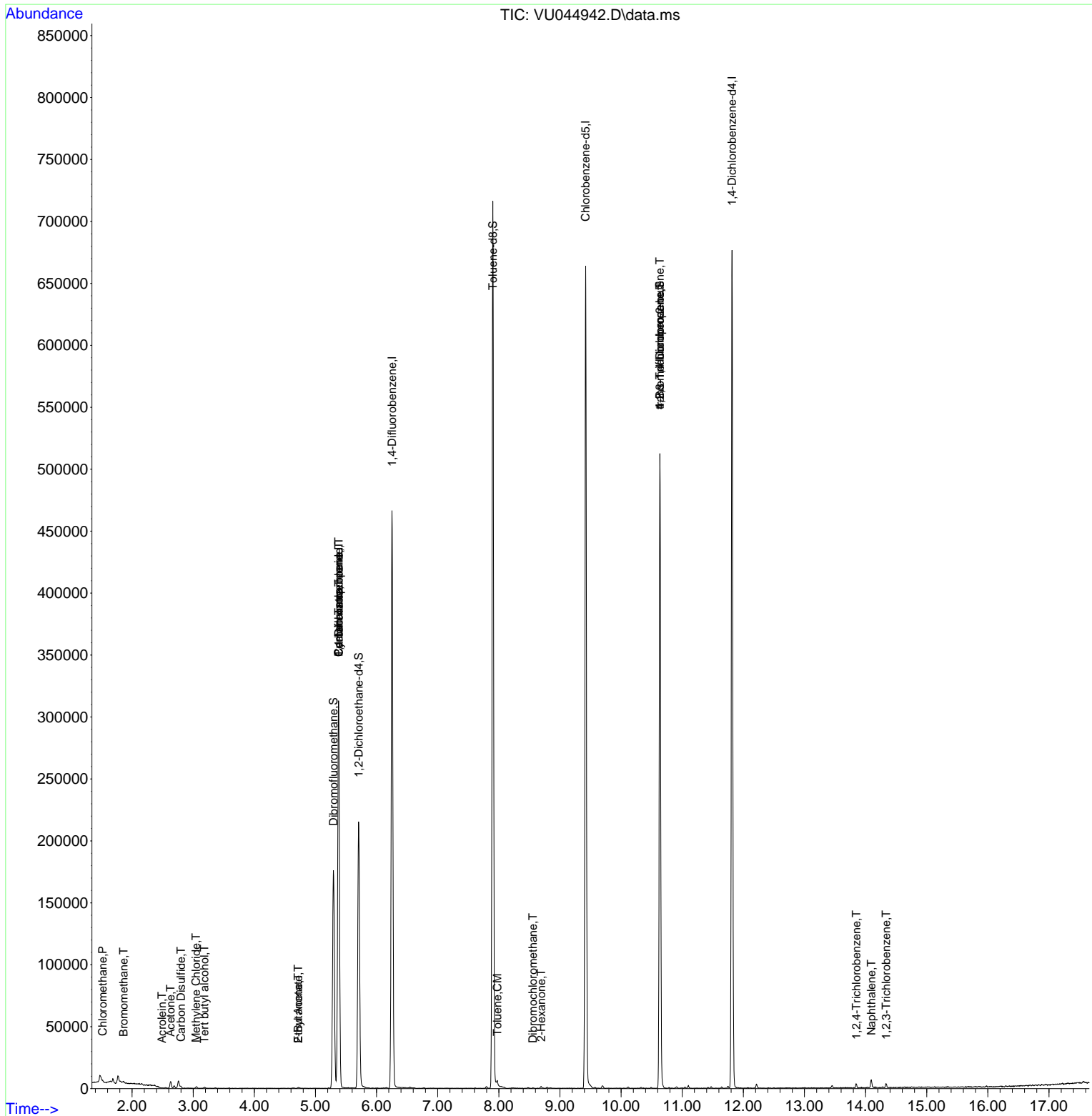
Compound	R.T.	QIon	Response	Conc	Units	Dev(Min)
-----						
Internal Standards						
1) Pentafluorobenzene	5.379	168	203611	50.000	ug/l	0.00
34) 1,4-Difluorobenzene	6.253	114	360947	50.000	ug/l	0.00
63) Chlorobenzene-d5	9.420	117	342169	50.000	ug/l	0.00
72) 1,4-Dichlorobenzene-d4	11.816	152	164673	50.000	ug/l	0.00
System Monitoring Compounds						
33) 1,2-Dichloroethane-d4	5.707	65	163913	48.361	ug/l	0.00
Spiked Amount	50.000	Range 78 - 117	Recovery	=	96.720%	
35) Dibromofluoromethane	5.295	113	113315	49.766	ug/l	0.00
Spiked Amount	50.000	Range 75 - 124	Recovery	=	99.540%	
50) Toluene-d8	7.903	98	460505	51.186	ug/l	0.00
Spiked Amount	50.000	Range 92 - 112	Recovery	=	102.380%	
62) 4-Bromofluorobenzene	10.636	95	169099	45.526	ug/l	0.00
Spiked Amount	50.000	Range 83 - 123	Recovery	=	91.060%	
Target Compounds						
						Qvalue
3) Chloromethane	1.520	50	764	0.234	ug/l	96
5) Bromomethane	1.861	94	636	0.497	ug/l	100
11) Tert butyl alcohol	3.182	59	968	0.995	ug/l #	72
13) Acrolein	2.491	56	155	3.932	ug/l #	14
16) Acetone	2.629	43	6342	3.152	ug/l	98
17) Carbon Disulfide	2.800	76	1510	0.212	ug/l #	84
20) Methylene Chloride	3.047	84	689	0.227	ug/l #	83
25) 2-Butanone	4.719	43	1152	0.403	ug/l #	87
31) Cyclohexane	5.379	56	5352	1.040	ug/l #	7
36) 1,1-Dichloropropene	5.379	75	18402	4.875	ug/l #	50
37) Ethyl Acetate	4.719	43	1152	0.231	ug/l #	69
38) Carbon Tetrachloride	5.379	117	21719	6.649	ug/l #	16
52) Toluene	7.976	92	1703	0.242	ug/l	99
59) 2-Hexanone	8.694	43	1451	0.326	ug/l	89
60) Dibromochloromethane	8.558	129	43	2.189	ug/l #	10
76) 1,2,3-Trichloropropane	10.636	75	91439	19.037	ug/l #	41
81) trans-1,4-Dichloro-2-b...	10.636	75	91439	52.831	ug/l #	9
93) 1,2,4-Trichlorobenzene	13.848	180	1198	0.371	ug/l	90
95) Naphthalene	14.095	128	6040	0.497	ug/l	98
96) 1,2,3-Trichlorobenzene	14.336	180	1173	0.362	ug/l	92

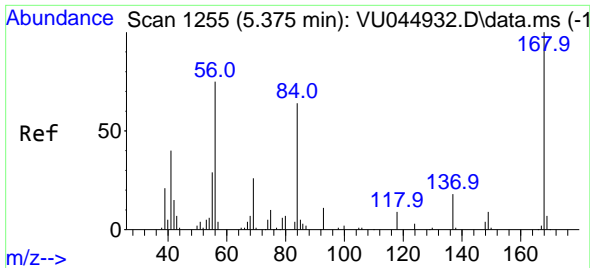
(#) = qualifier out of range (m) = manual integration (+) = signals summed

Data Path : Z:\voasrv\HPCHEM1\MSVOA\_U\Data\VU092821\  
 Data File : VU044942.D  
 Acq On : 28 Sep 2021 15:32  
 Operator : SY/MD  
 Sample : M3954-01  
 Misc : 5.0mL/MSVOA\_U/WATER  
 ALS Vial : 15 Sample Multiplier: 1

Instrument :  
 MSVOA\_U  
 ClientSampleId :  
 P287-DITCH

Quant Time: Sep 28 15:55:11 2021  
 Quant Method : Z:\voasrv\HPCHEM1\MSVOA\_U\Method\82U092821W.M  
 Quant Title : SW846 8260  
 QLast Update : Tue Sep 28 12:32:13 2021  
 Response via : Initial Calibration

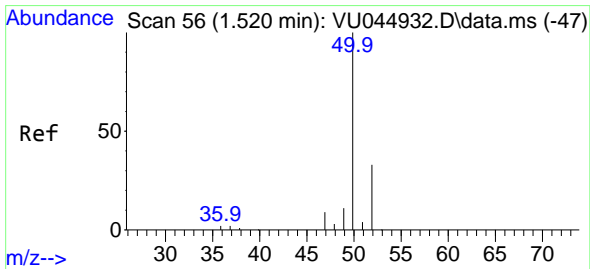
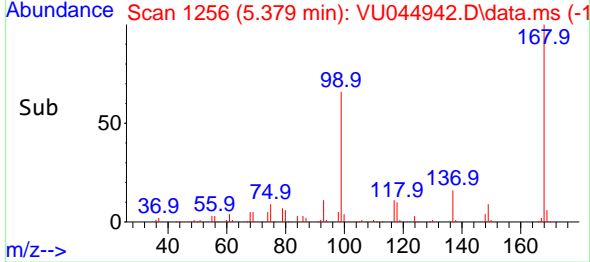
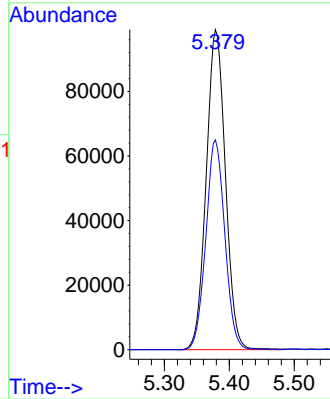
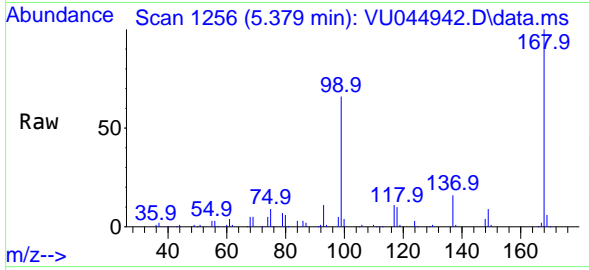




#1  
 Pentafluorobenzene  
 Concen: 50.000 ug/l  
 RT: 5.379 min Scan# 11  
 Delta R.T. 0.004 min  
 Lab File: VU044942.D  
 Acq: 28 Sep 2021 15:32

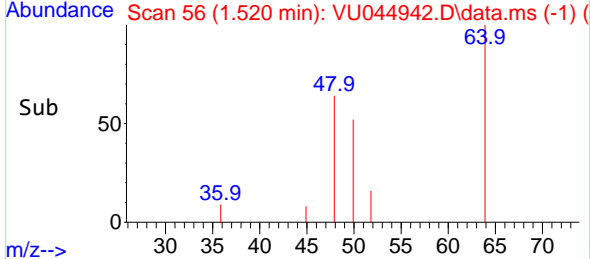
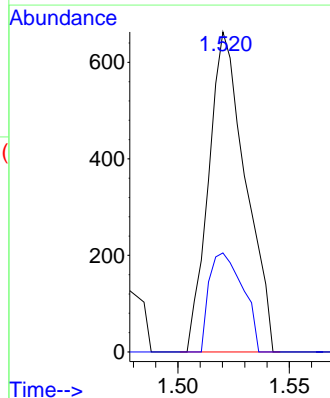
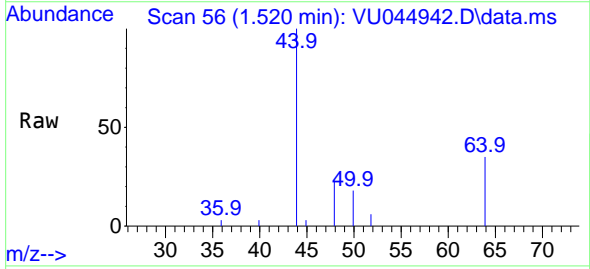
Instrument :  
 MSVOA\_U  
 ClientSampleId :  
 P287-DITCH

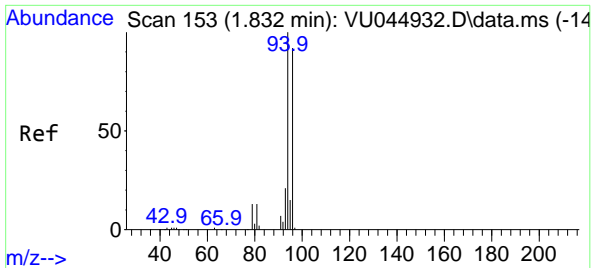
Tgt Ion:168 Resp: 203611  
 Ion Ratio Lower Upper  
 168 100  
 99 65.5 51.4 77.0



#3  
 Chloromethane  
 Concen: 0.234 ug/l  
 RT: 1.520 min Scan# 56  
 Delta R.T. 0.000 min  
 Lab File: VU044942.D  
 Acq: 28 Sep 2021 15:32

Tgt Ion: 50 Resp: 764  
 Ion Ratio Lower Upper  
 50 100  
 52 30.9 26.3 39.5

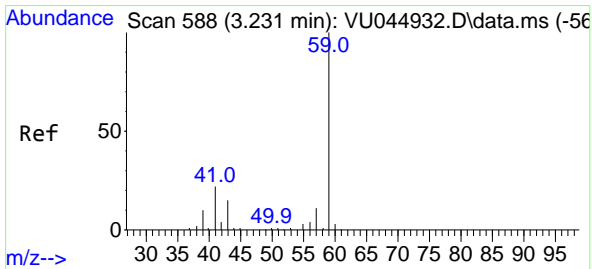
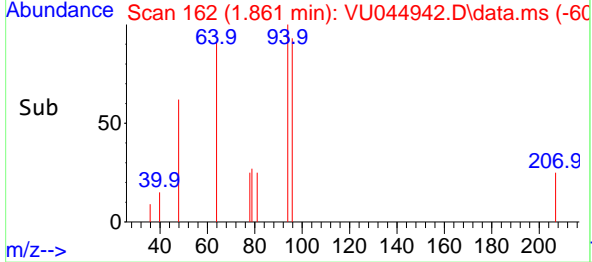
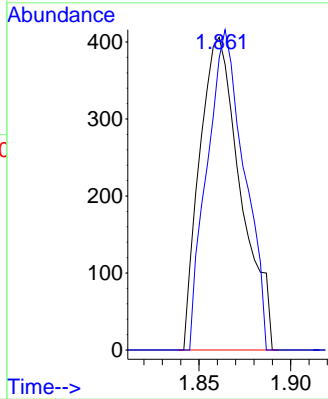
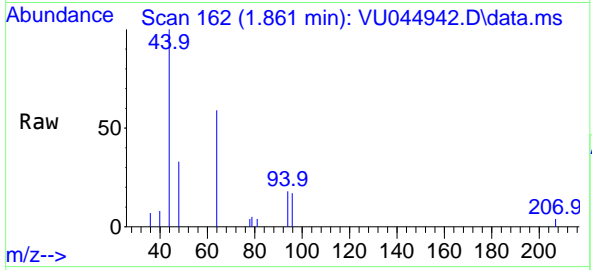




#5  
 Bromomethane  
 Concen: 0.497 ug/l  
 RT: 1.861 min Scan# 11  
 Delta R.T. 0.029 min  
 Lab File: VU044942.D  
 Acq: 28 Sep 2021 15:32

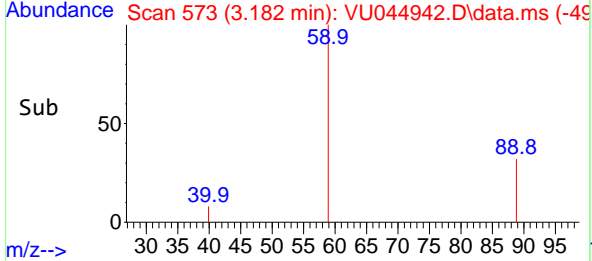
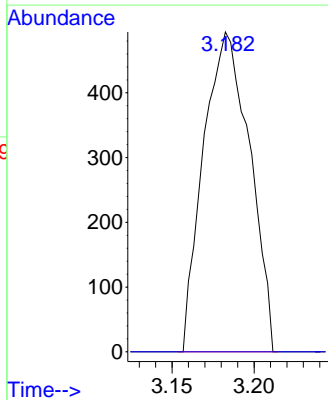
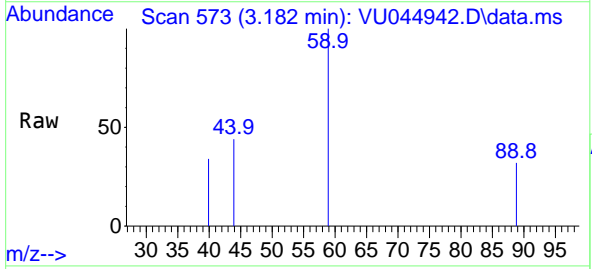
Instrument : MSVOA\_U  
 ClientSampleId : P287-DITCH

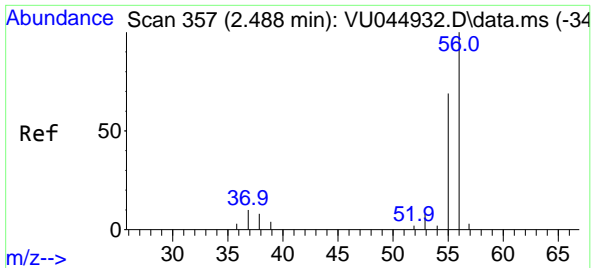
Tgt Ion: 94 Resp: 636  
 Ion Ratio Lower Upper  
 94 100  
 96 93.3 74.5 111.7



#11  
 Tert butyl alcohol  
 Concen: 0.995 ug/l  
 RT: 3.182 min Scan# 573  
 Delta R.T. -0.049 min  
 Lab File: VU044942.D  
 Acq: 28 Sep 2021 15:32

Tgt Ion: 59 Resp: 968  
 Ion Ratio Lower Upper  
 59 100  
 57 0.0 8.3 12.5#

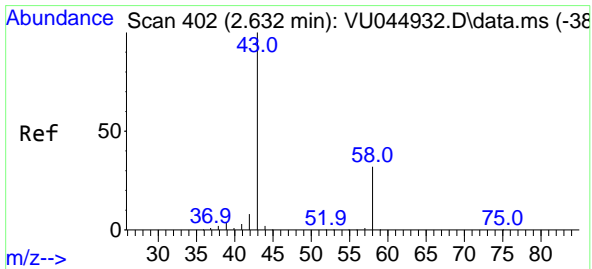
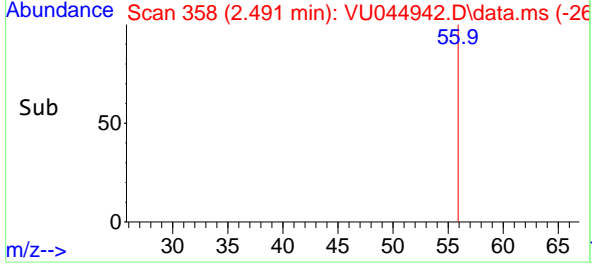
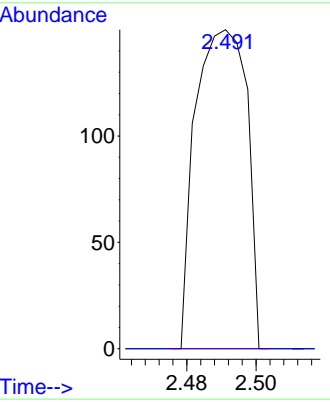
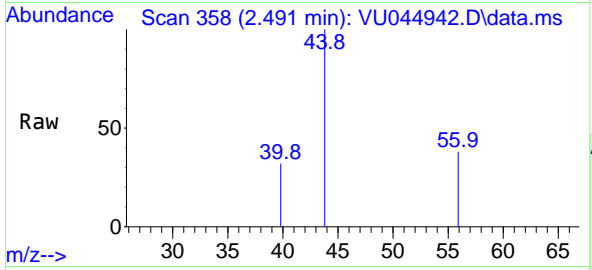




#13  
 Acrolein  
 Concen: 3.932 ug/l  
 RT: 2.491 min Scan# 31  
 Delta R.T. 0.003 min  
 Lab File: VU044942.D  
 Acq: 28 Sep 2021 15:32

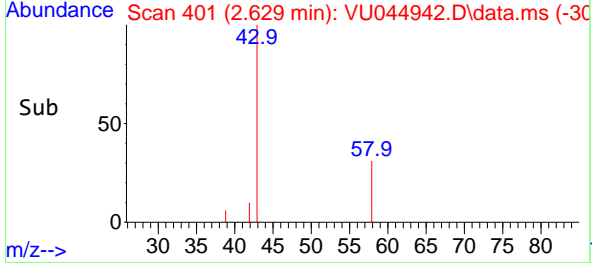
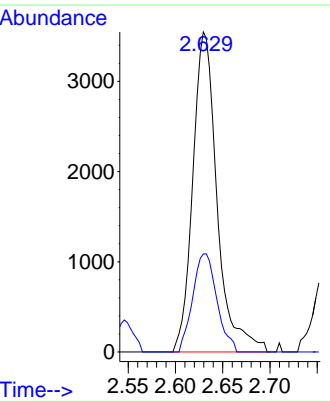
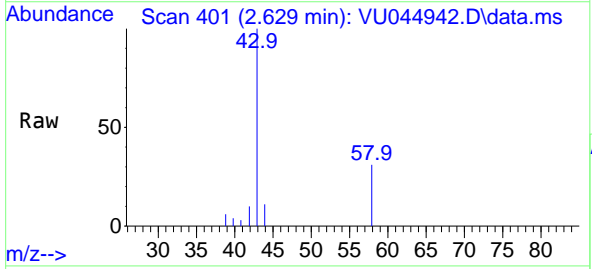
Instrument : MSVOA\_U  
 Client Sample Id : P287-DITCH

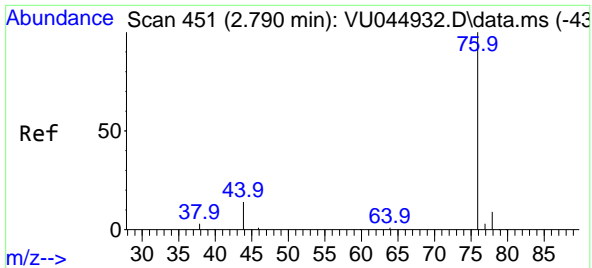
Tgt Ion: 56 Resp: 155  
 Ion Ratio Lower Upper  
 56 100  
 55 0.0 57.4 86.0#



#16  
 Acetone  
 Concen: 3.152 ug/l  
 RT: 2.629 min Scan# 401  
 Delta R.T. -0.003 min  
 Lab File: VU044942.D  
 Acq: 28 Sep 2021 15:32

Tgt Ion: 43 Resp: 6342  
 Ion Ratio Lower Upper  
 43 100  
 58 30.6 25.2 37.8

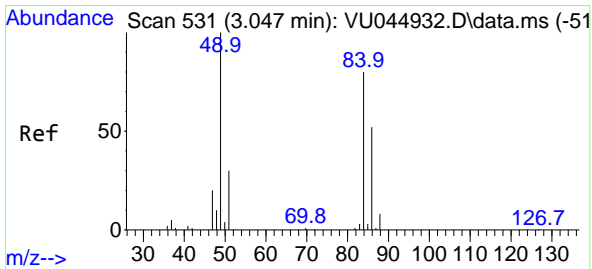
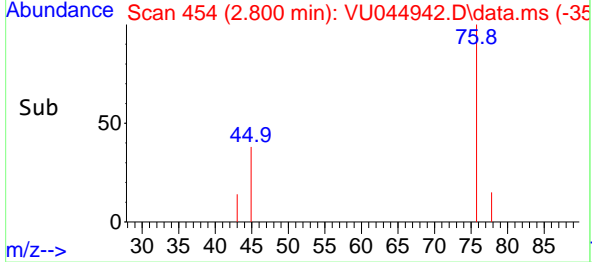
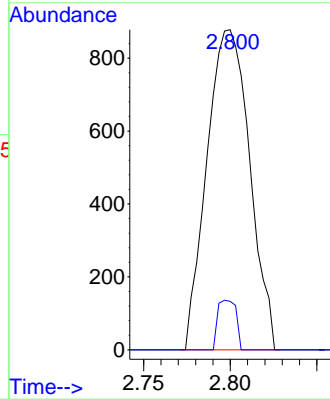
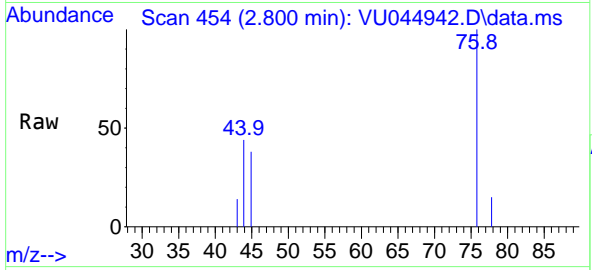




#17  
 Carbon Disulfide  
 Concen: 0.212 ug/l  
 RT: 2.800 min Scan# 41  
 Delta R.T. 0.010 min  
 Lab File: VU044942.D  
 Acq: 28 Sep 2021 15:32

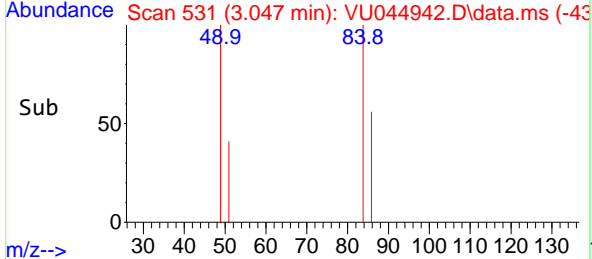
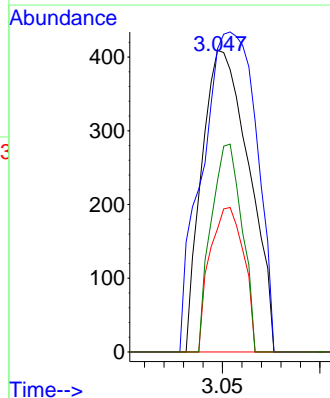
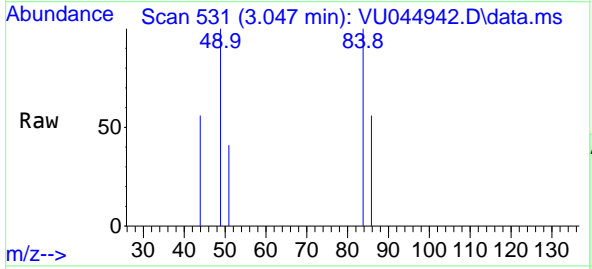
Instrument :  
 MSVOA\_U  
 ClientSampleId :  
 P287-DITCH

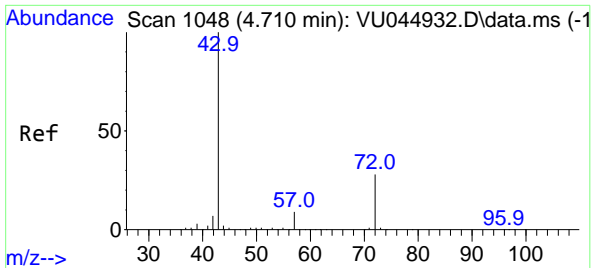
Tgt Ion: 76 Resp: 1510  
 Ion Ratio Lower Upper  
 76 100  
 78 15.1 7.4 11.0#



#20  
 Methylene Chloride  
 Concen: 0.227 ug/l  
 RT: 3.047 min Scan# 531  
 Delta R.T. 0.000 min  
 Lab File: VU044942.D  
 Acq: 28 Sep 2021 15:32

Tgt Ion: 84 Resp: 689  
 Ion Ratio Lower Upper  
 84 100  
 49 100.5 104.9 157.3#  
 51 40.8 31.8 47.8  
 86 56.7 49.8 74.6



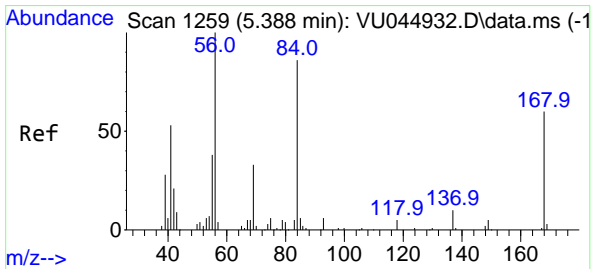
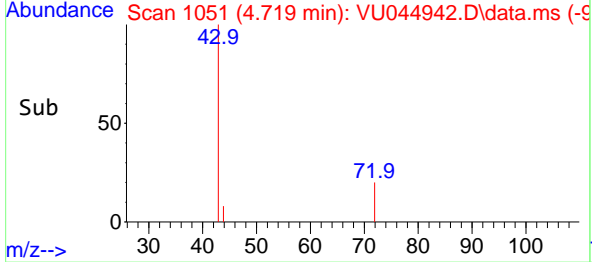
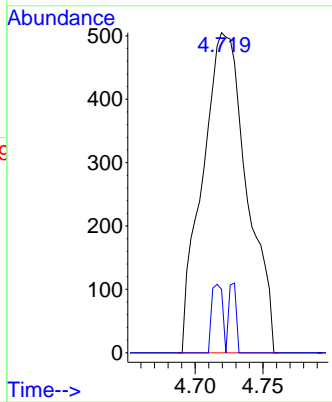
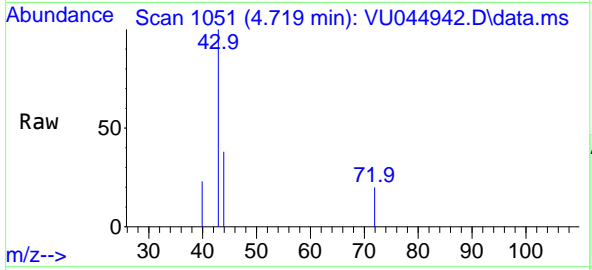


#25  
 2-Butanone  
 Concen: 0.403 ug/l  
 RT: 4.719 min Scan# 1051  
 Delta R.T. 0.009 min  
 Lab File: VU044942.D  
 Acq: 28 Sep 2021 15:32

Instrument : MSVOA\_U  
 Client Sample Id : P287-DITCH

Tgt Ion: 43 Resp: 1152

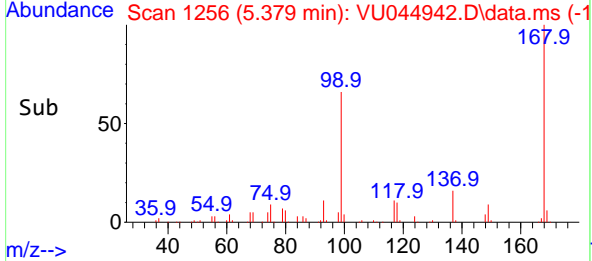
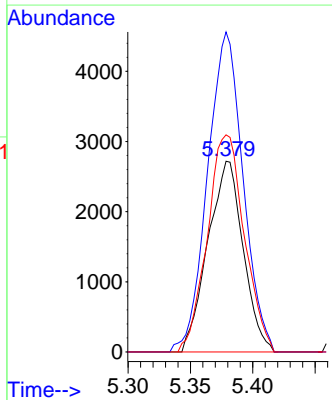
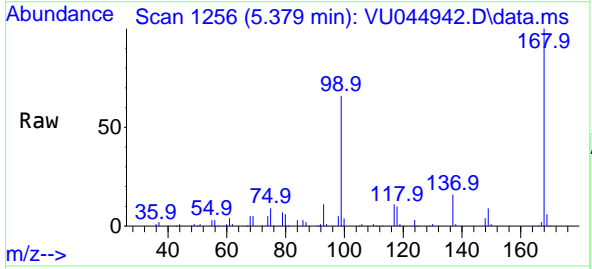
Ion	Ratio	Lower	Upper
43	100		
72	19.8	21.3	31.9#

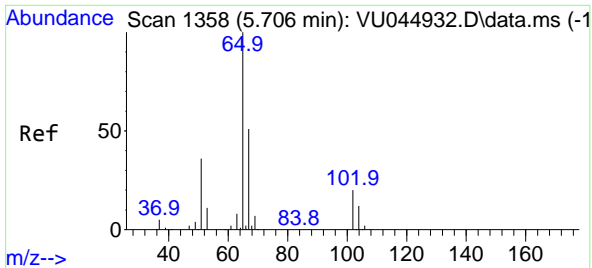


#31  
 Cyclohexane  
 Concen: 1.040 ug/l  
 RT: 5.379 min Scan# 1256  
 Delta R.T. -0.009 min  
 Lab File: VU044942.D  
 Acq: 28 Sep 2021 15:32

Tgt Ion: 56 Resp: 5352

Ion	Ratio	Lower	Upper
56	100		
69	167.8	25.2	37.8#
84	113.9	66.4	99.6#





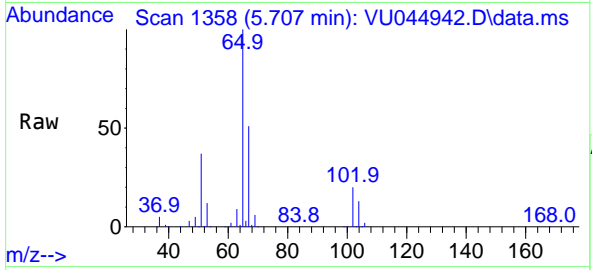
#33  
 1,2-Dichloroethane-d4  
 Concen: 48.361 ug/l  
 RT: 5.707 min Scan# 11  
 Delta R.T. 0.000 min  
 Lab File: VU044942.D  
 Acq: 28 Sep 2021 15:32

Instrument :

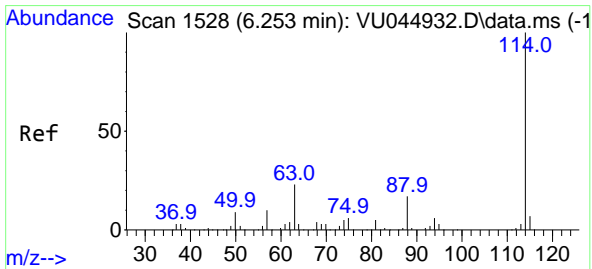
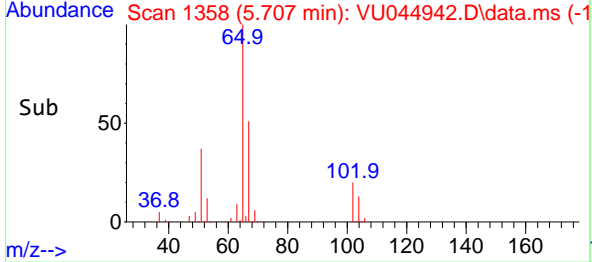
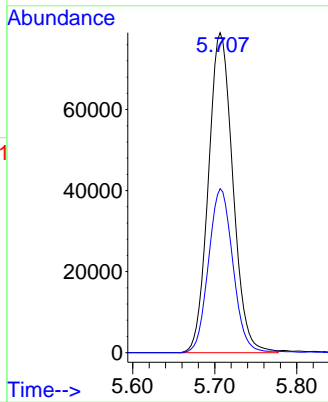
MSVOA\_U

ClientSampleId :

P287-DITCH

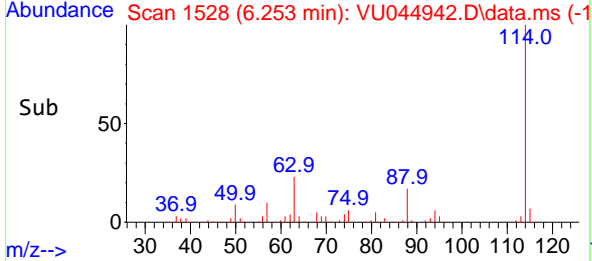
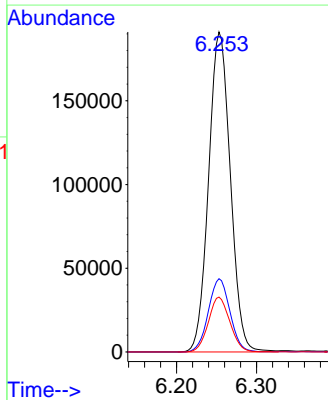
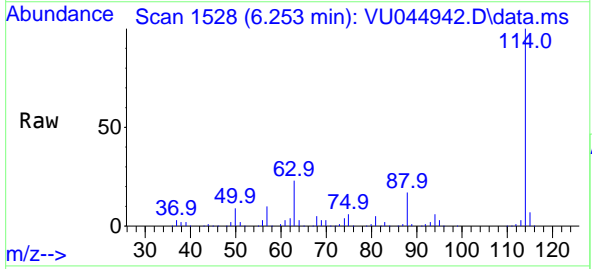


Tgt Ion: 65 Resp: 163913  
 Ion Ratio Lower Upper  
 65 100  
 67 51.3 0.0 104.8

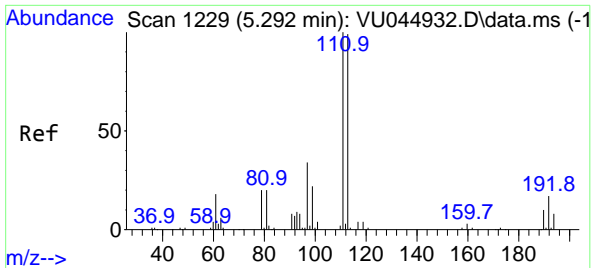


#34  
 1,4-Difluorobenzene  
 Concen: 50.000 ug/l  
 RT: 6.253 min Scan# 1528  
 Delta R.T. 0.000 min  
 Lab File: VU044942.D  
 Acq: 28 Sep 2021 15:32

Tgt Ion: 114 Resp: 360947  
 Ion Ratio Lower Upper  
 114 100  
 63 22.9 0.0 47.8  
 88 17.2 0.0 32.8

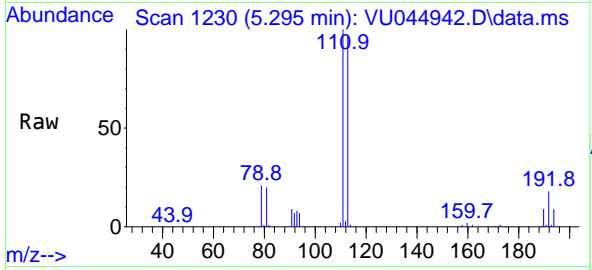




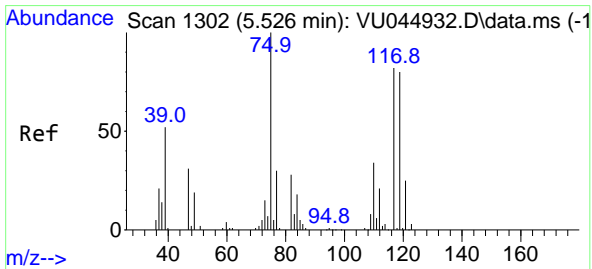
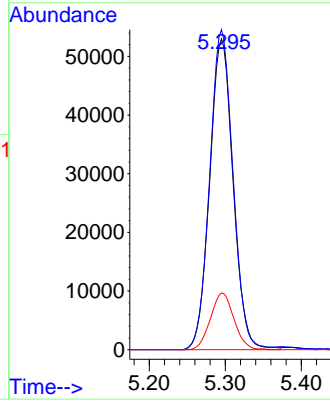
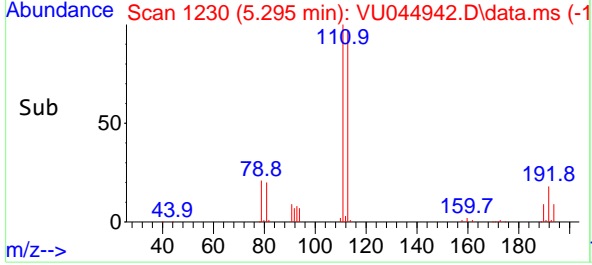


#35  
 Dibromofluoromethane  
 Concen: 49.766 ug/l  
 RT: 5.295 min Scan# 1111  
 Delta R.T. 0.003 min  
 Lab File: VU044942.D  
 Acq: 28 Sep 2021 15:32

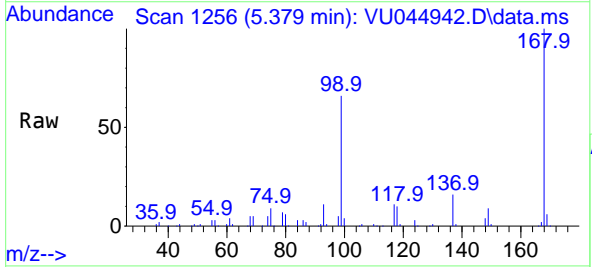
Instrument : MSVOA\_U  
 ClientSampleId : P287-DITCH



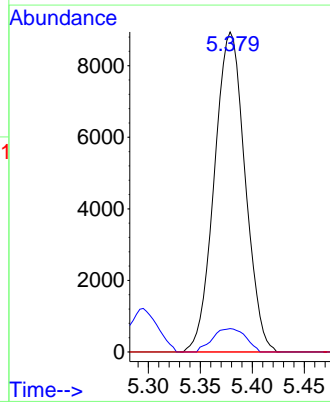
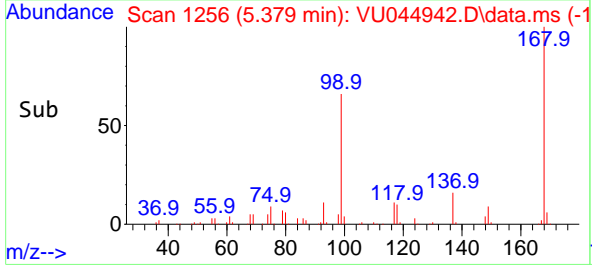
Tgt Ion: 113 Resp: 113315  
 Ion Ratio Lower Upper  
 113 100  
 111 102.2 84.1 126.1  
 192 18.3 14.8 22.2

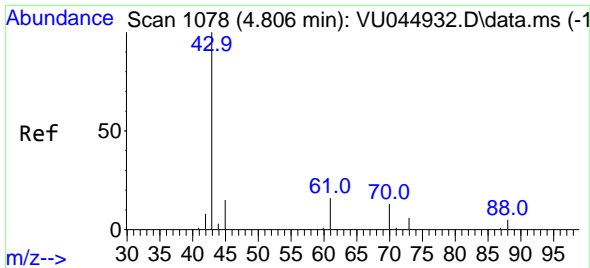


#36  
 1,1-Dichloropropene  
 Concen: 4.875 ug/l  
 RT: 5.379 min Scan# 1256  
 Delta R.T. -0.147 min  
 Lab File: VU044942.D  
 Acq: 28 Sep 2021 15:32



Tgt Ion: 75 Resp: 18402  
 Ion Ratio Lower Upper  
 75 100  
 110 7.8 16.3 48.9#  
 77 0.0 25.0 37.4#



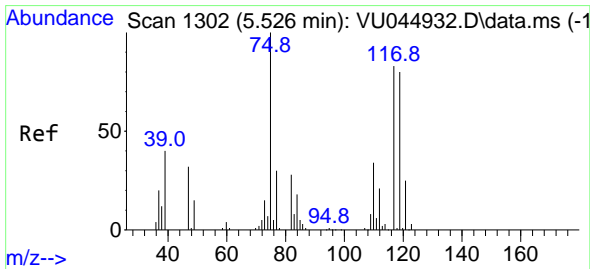
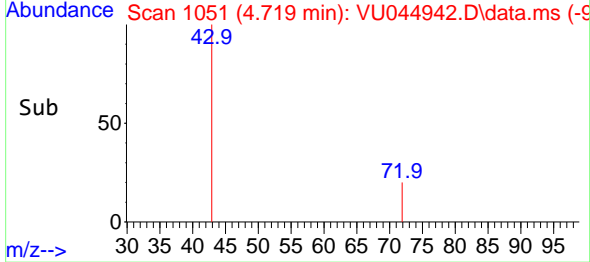
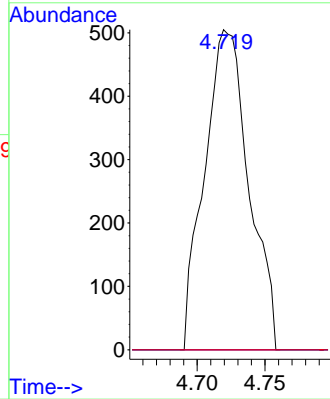
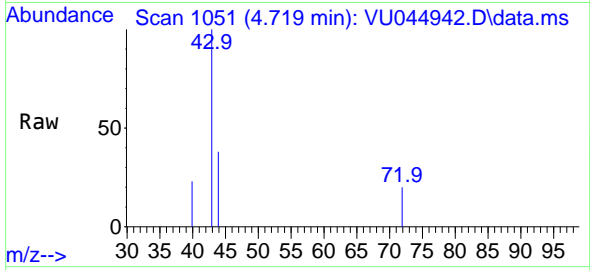


#37  
 Ethyl Acetate  
 Concen: 0.231 ug/l  
 RT: 4.719 min Scan# 1051  
 Delta R.T. -0.087 min  
 Lab File: VU044942.D  
 Acq: 28 Sep 2021 15:32

Instrument : MSVOA\_U  
 ClientSampleId : P287-DITCH

Tgt Ion: 43 Resp: 1152

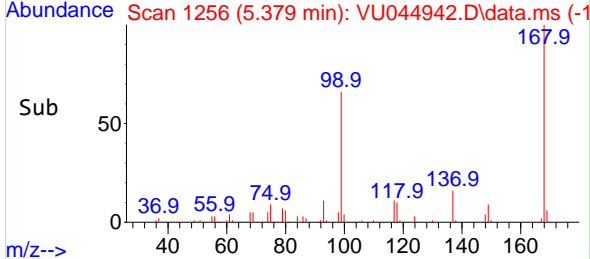
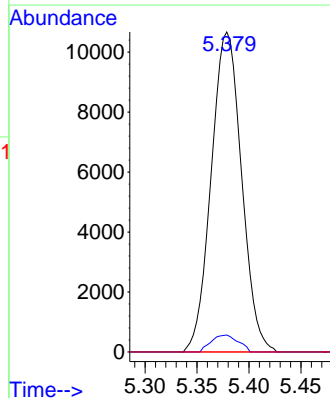
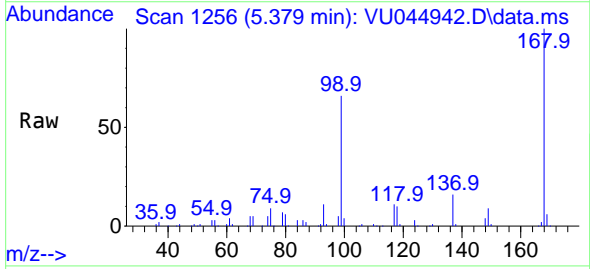
Ion	Ratio	Lower	Upper
43	100		
61	0.0	10.9	16.3#
70	0.0	8.2	12.4#

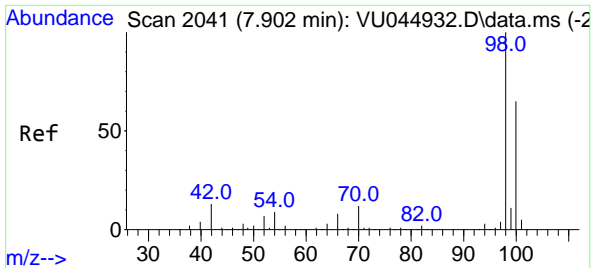


#38  
 Carbon Tetrachloride  
 Concen: 6.649 ug/l  
 RT: 5.379 min Scan# 1256  
 Delta R.T. -0.147 min  
 Lab File: VU044942.D  
 Acq: 28 Sep 2021 15:32

Tgt Ion: 117 Resp: 21719

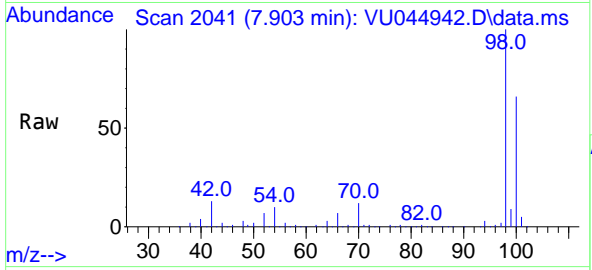
Ion	Ratio	Lower	Upper
117	100		
119	5.3	77.4	116.2#
121	0.0	24.5	36.7#



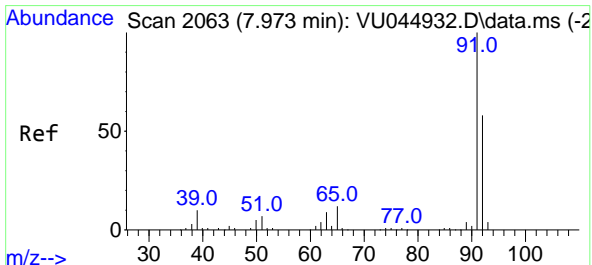
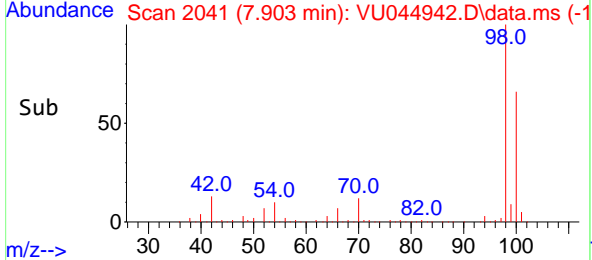
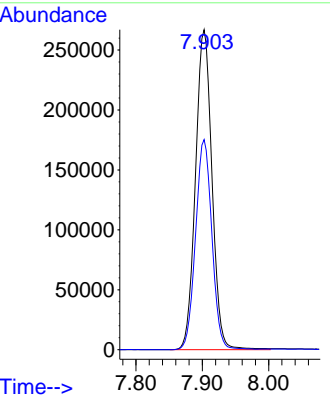


#50  
 Toluene-d8  
 Concen: 51.186 ug/l  
 RT: 7.903 min Scan# 2041  
 Delta R.T. 0.001 min  
 Lab File: VU044942.D  
 Acq: 28 Sep 2021 15:32

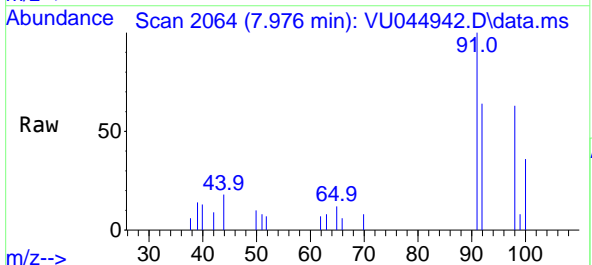
Instrument : MSVOA\_U  
 ClientSampleId : P287-DITCH



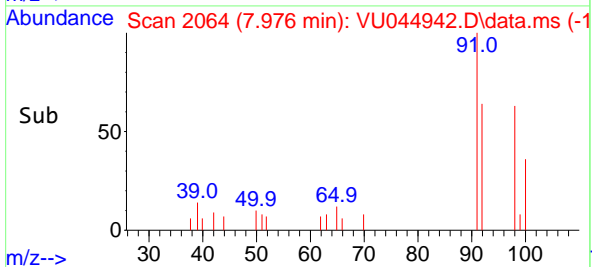
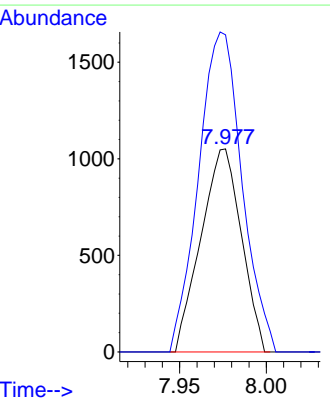
Tgt Ion: 98 Resp: 460505  
 Ion Ratio Lower Upper  
 98 100  
 100 65.1 52.5 78.7

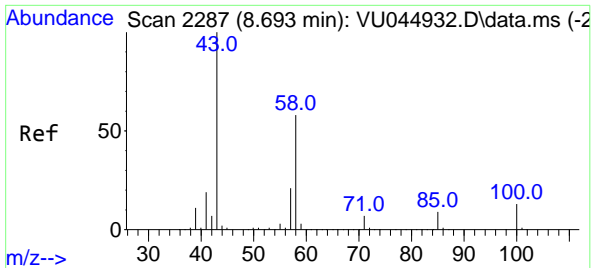


#52  
 Toluene  
 Concen: 0.242 ug/l  
 RT: 7.976 min Scan# 2064  
 Delta R.T. 0.003 min  
 Lab File: VU044942.D  
 Acq: 28 Sep 2021 15:32



Tgt Ion: 92 Resp: 1703  
 Ion Ratio Lower Upper  
 92 100  
 91 169.5 136.9 205.3

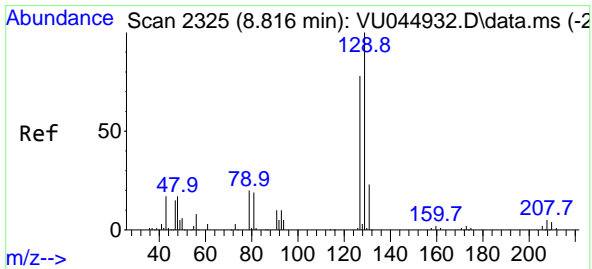
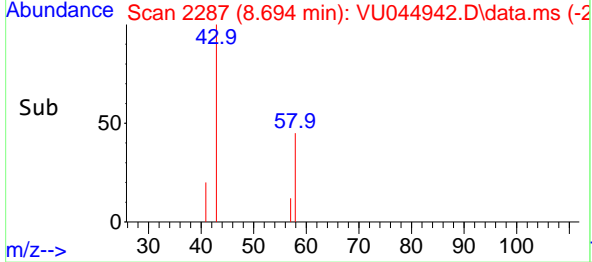
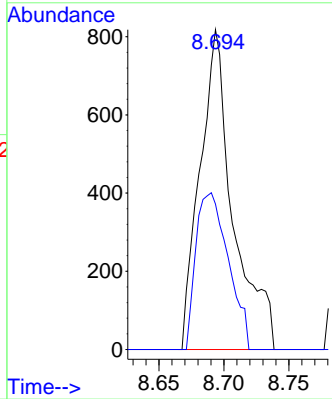
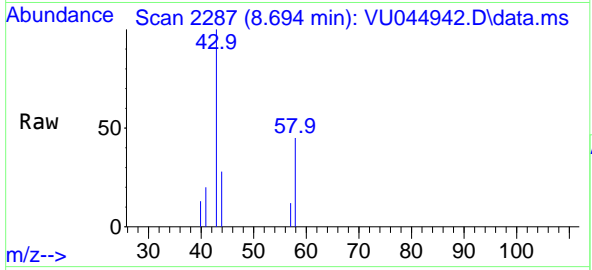




#59  
 2-Hexanone  
 Concen: 0.326 ug/l  
 RT: 8.694 min Scan# 21  
 Delta R.T. 0.001 min  
 Lab File: VU044942.D  
 Acq: 28 Sep 2021 15:32

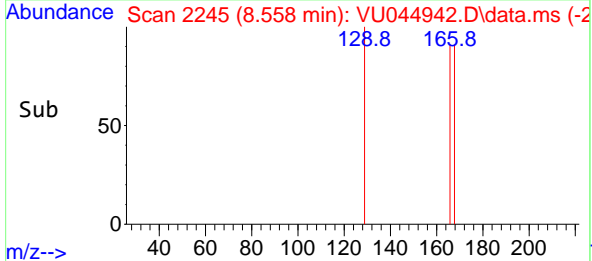
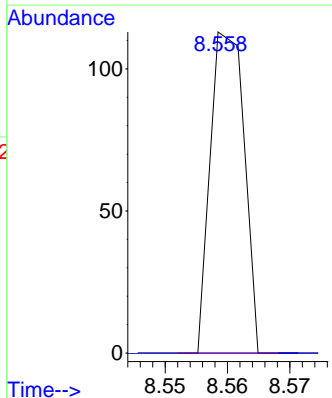
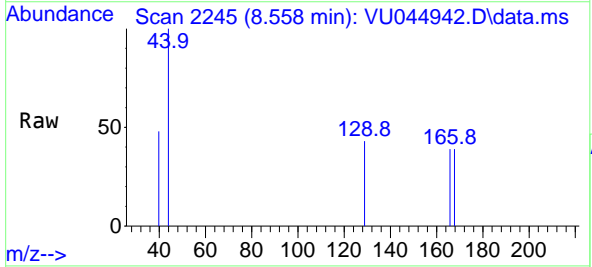
Instrument : MSVOA\_U  
 ClientSampleId : P287-DITCH

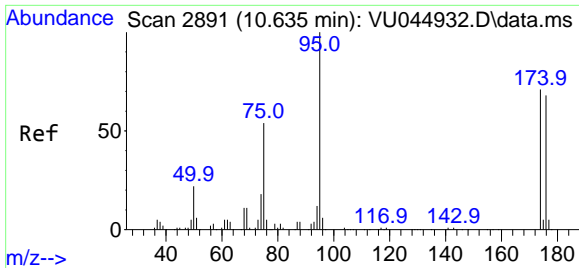
Tgt Ion: 43 Resp: 1451  
 Ion Ratio Lower Upper  
 43 100  
 58 47.9 28.0 84.0



#60  
 Dibromochloromethane  
 Concen: 2.189 ug/l  
 RT: 8.558 min Scan# 2245  
 Delta R.T. -0.258 min  
 Lab File: VU044942.D  
 Acq: 28 Sep 2021 15:32

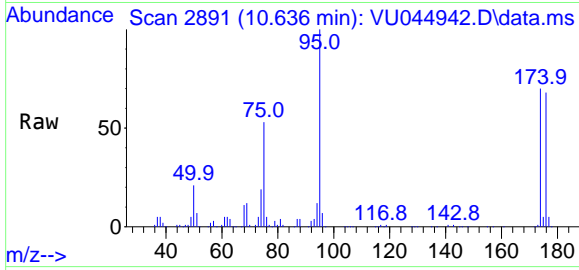
Tgt Ion: 129 Resp: 43  
 Ion Ratio Lower Upper  
 129 100  
 127 0.0 39.0 117.0#



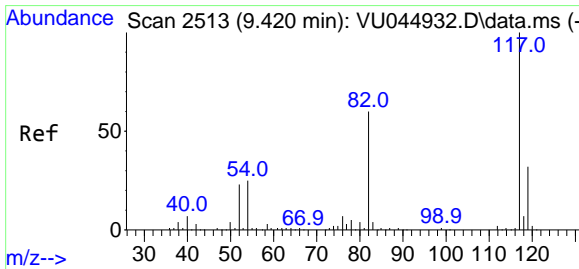
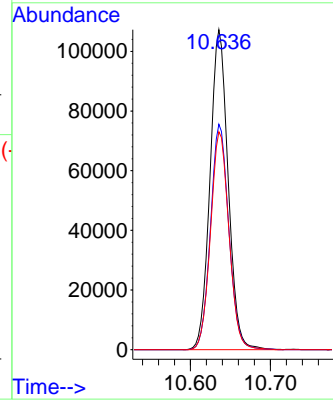
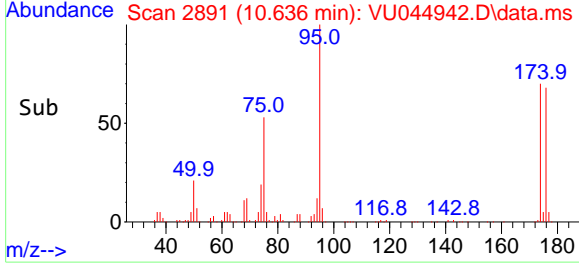


#62  
 4-Bromofluorobenzene  
 Concen: 45.526 ug/l  
 RT: 10.636 min Scan# 21  
 Delta R.T. 0.001 min  
 Lab File: VU044942.D  
 Acq: 28 Sep 2021 15:32

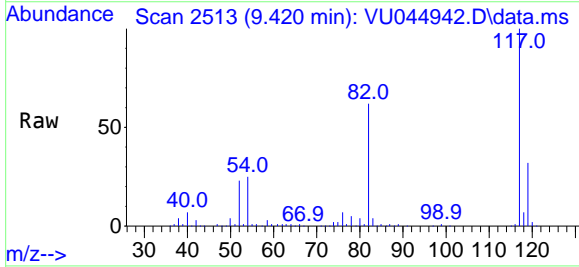
Instrument :  
 MSVOA\_U  
 ClientSampleId :  
 P287-DITCH



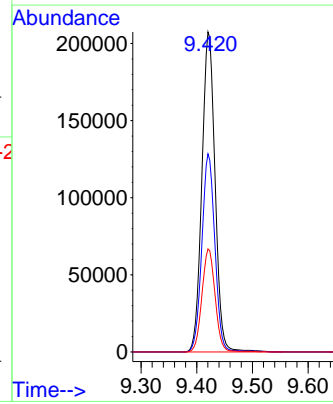
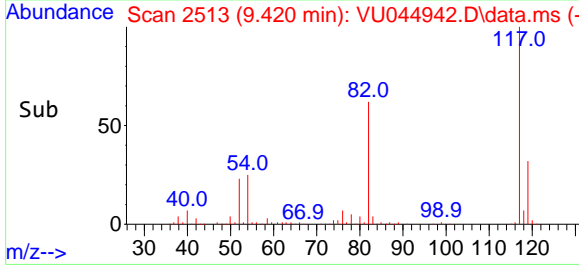
Tgt Ion: 95 Resp: 169099  
 Ion Ratio Lower Upper  
 95 100  
 174 71.3 0.0 146.6  
 176 69.2 0.0 141.2

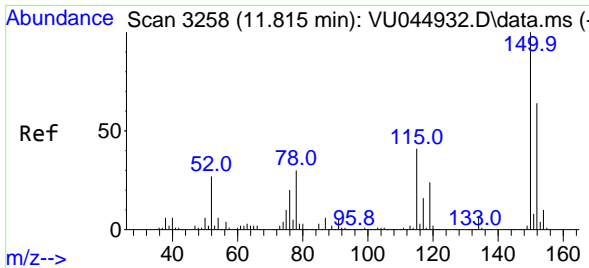


#63  
 Chlorobenzene-d5  
 Concen: 50.000 ug/l  
 RT: 9.420 min Scan# 2513  
 Delta R.T. 0.000 min  
 Lab File: VU044942.D  
 Acq: 28 Sep 2021 15:32



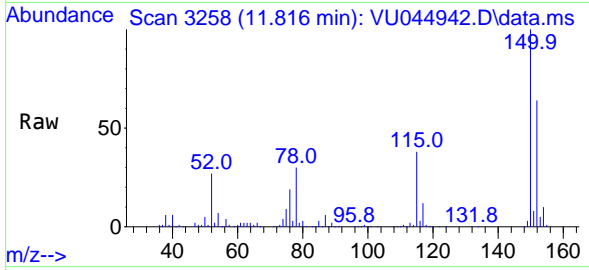
Tgt Ion: 117 Resp: 342169  
 Ion Ratio Lower Upper  
 117 100  
 82 61.9 47.8 71.8  
 119 32.2 25.8 38.6



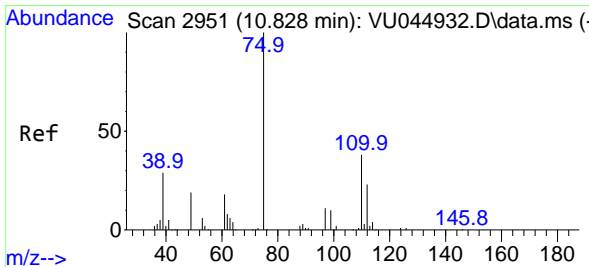
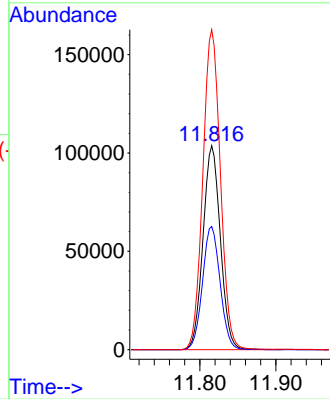
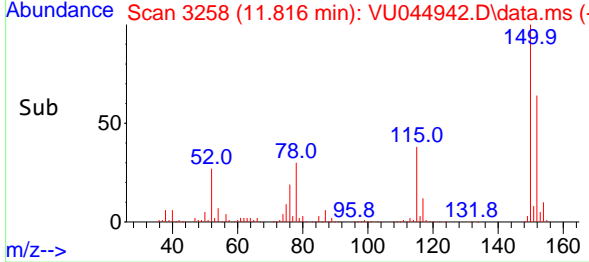


#72  
 1,4-Dichlorobenzene-d4  
 Concen: 50.000 ug/l  
 RT: 11.816 min Scan# 31  
 Delta R.T. 0.001 min  
 Lab File: VU044942.D  
 Acq: 28 Sep 2021 15:32

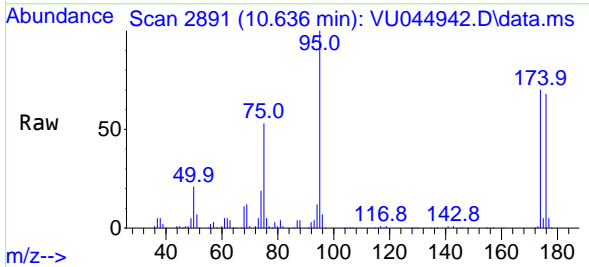
Instrument :  
 MSVOA\_U  
 ClientSampleId :  
 P287-DITCH



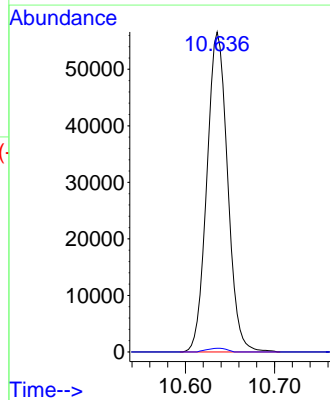
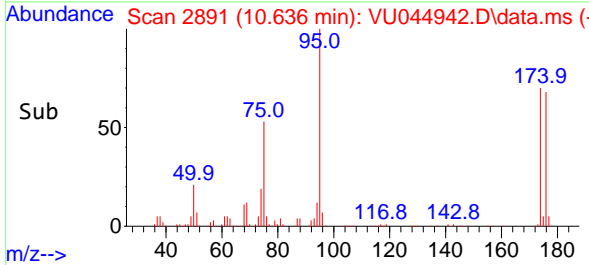
Tgt Ion:152 Resp: 164673  
 Ion Ratio Lower Upper  
 152 100  
 115 61.2 43.5 130.7  
 150 158.6 0.0 350.0

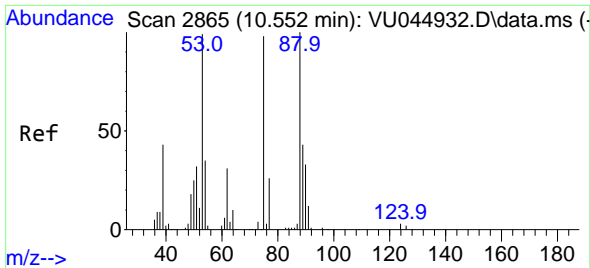


#76  
 1,2,3-Trichloropropane  
 Concen: 19.037 ug/l  
 RT: 10.636 min Scan# 2891  
 Delta R.T. -0.192 min  
 Lab File: VU044942.D  
 Acq: 28 Sep 2021 15:32



Tgt Ion: 75 Resp: 91439  
 Ion Ratio Lower Upper  
 75 100  
 77 1.1 17.9 53.7#

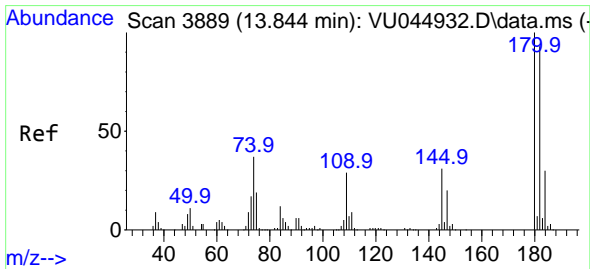
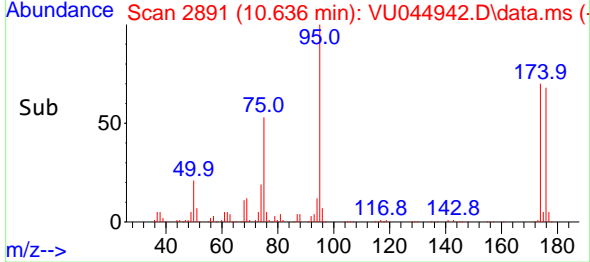
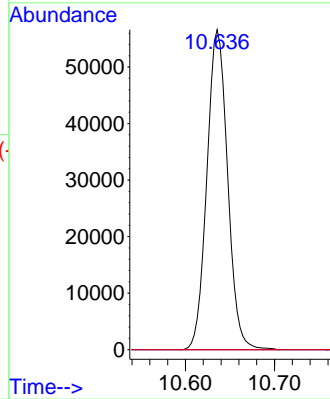
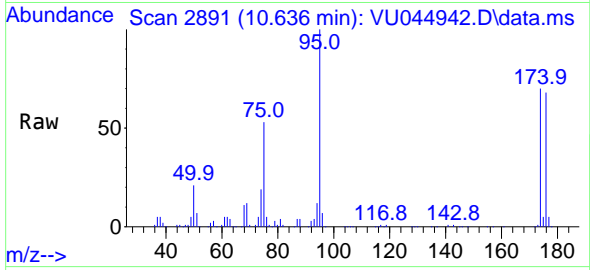




#81  
 trans-1,4-Dichloro-2-butene  
 Concen: 52.831 ug/l  
 RT: 10.636 min Scan# 21  
 Delta R.T. 0.084 min  
 Lab File: VU044942.D  
 Acq: 28 Sep 2021 15:32

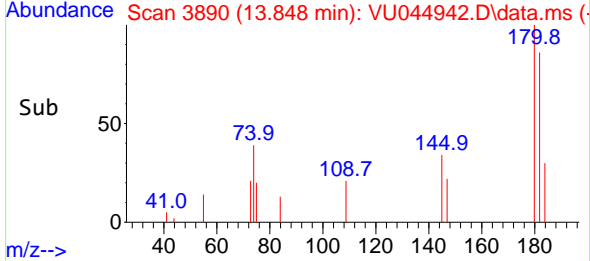
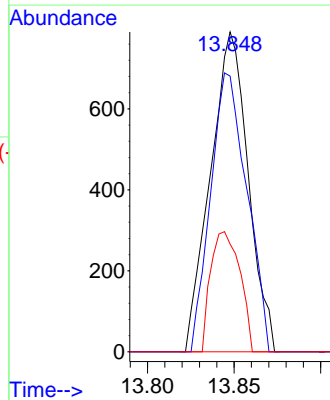
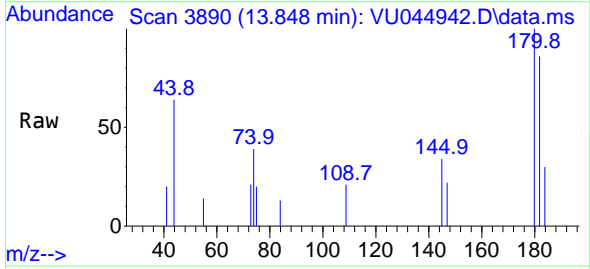
Instrument :  
 MSVOA\_U  
 ClientSampleId :  
 P287-DITCH

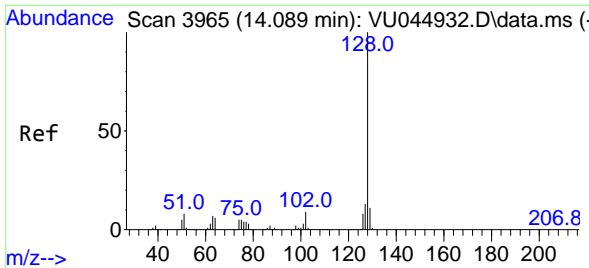
Tgt Ion: 75 Resp: 91439  
 Ion Ratio Lower Upper  
 75 100  
 53 0.0 82.0 123.0#  
 89 0.0 34.2 51.4#



#93  
 1,2,4-Trichlorobenzene  
 Concen: 0.371 ug/l  
 RT: 13.848 min Scan# 3890  
 Delta R.T. 0.004 min  
 Lab File: VU044942.D  
 Acq: 28 Sep 2021 15:32

Tgt Ion:180 Resp: 1198  
 Ion Ratio Lower Upper  
 180 100  
 182 83.6 47.4 142.3  
 145 29.0 15.4 46.2



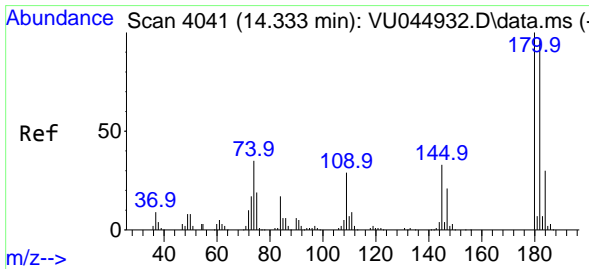
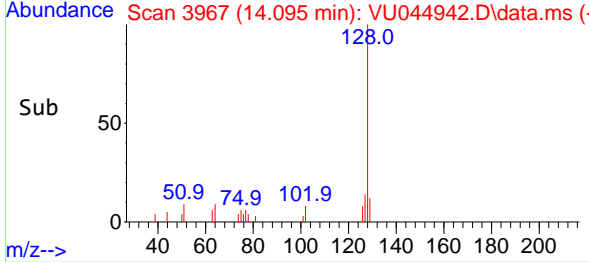
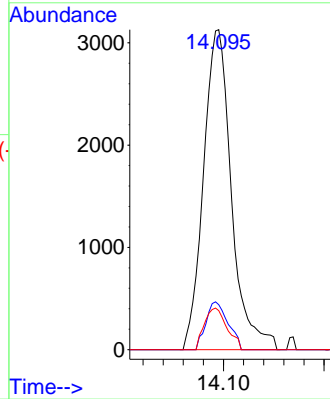
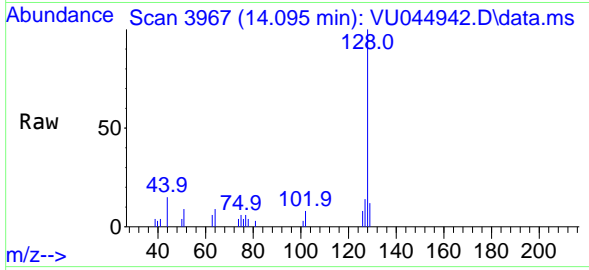


#95  
 Naphthalene  
 Concen: 0.497 ug/l  
 RT: 14.095 min Scan# 3967  
 Delta R.T. 0.006 min  
 Lab File: VU044942.D  
 Acq: 28 Sep 2021 15:32

Instrument : MSVOA\_U  
 ClientSampleId : P287-DITCH

Tgt Ion:128 Resp: 6040

Ion	Ratio	Lower	Upper
128	100		
127	11.8	10.4	15.6
129	10.5	8.6	13.0



#96  
 1,2,3-Trichlorobenzene  
 Concen: 0.362 ug/l  
 RT: 14.336 min Scan# 4042  
 Delta R.T. 0.003 min  
 Lab File: VU044942.D  
 Acq: 28 Sep 2021 15:32

Tgt Ion:180 Resp: 1173

Ion	Ratio	Lower	Upper
180	100		
182	102.7	47.1	141.4
145	29.2	16.4	49.2

