

Data Path : Z:\voasrv\HPCHEM1\MSVOA_U\Data\VU092821\
 Data File : VU044947.D
 Acq On : 28 Sep 2021 17:30
 Operator : SY/MD
 Sample : M3829-15
 Misc : 5.0mL/MSVOA_U/WATER
 ALS Vial : 20 Sample Multiplier: 1

Instrument :
 MSVOA_U
 ClientSampleId :
 RE120D2-20210917

Integration Parameters: RTEINT.P

Integrator: RTE
 Smoothing : ON Filtering: 5
 Sampling : 1 Min Area: 3 % of largest Peak
 Start Thrs: 0.2 Max Peaks: 100
 Stop Thrs : 0 Peak Location: TOP

If leading or trailing edge < 100 prefer < Baseline drop else tangent >
 Peak separation: 5

Method : Z:\voasrv\HPCHEM1\MSVOA_U\Method\82U092821W.M
 Title : SW846 8260

Signal : TIC: VU044947.D\data.ms

peak #	R.T. min	first scan	max scan	last scan	PK TY	peak height	corr. area	corr. % max.	% of total
1	2.584	374	387	402	rBV2	117205	215505	2.79%	1.498%
2	5.295	1214	1230	1243	rBV	171327	362097	4.69%	2.516%
3	5.378	1243	1256	1278	rVB	296972	612893	7.95%	4.259%
4	5.706	1344	1358	1383	rBV	206568	428716	5.56%	2.979%
5	6.253	1512	1528	1553	rBV	441572	836608	10.85%	5.814%
6	6.549	1603	1620	1658	rBV	4073691	7713676	100.00%	53.603%
7	7.902	2027	2041	2064	rBV	688625	1183524	15.34%	8.224%
8	8.558	2234	2245	2258	rBV2	61915	105567	1.37%	0.734%
9	9.420	2500	2513	2536	rBV	630349	1049162	13.60%	7.291%
10	10.635	2878	2891	2923	rBV	499601	804941	10.44%	5.594%
11	11.815	3245	3258	3280	rBV	684742	1077811	13.97%	7.490%

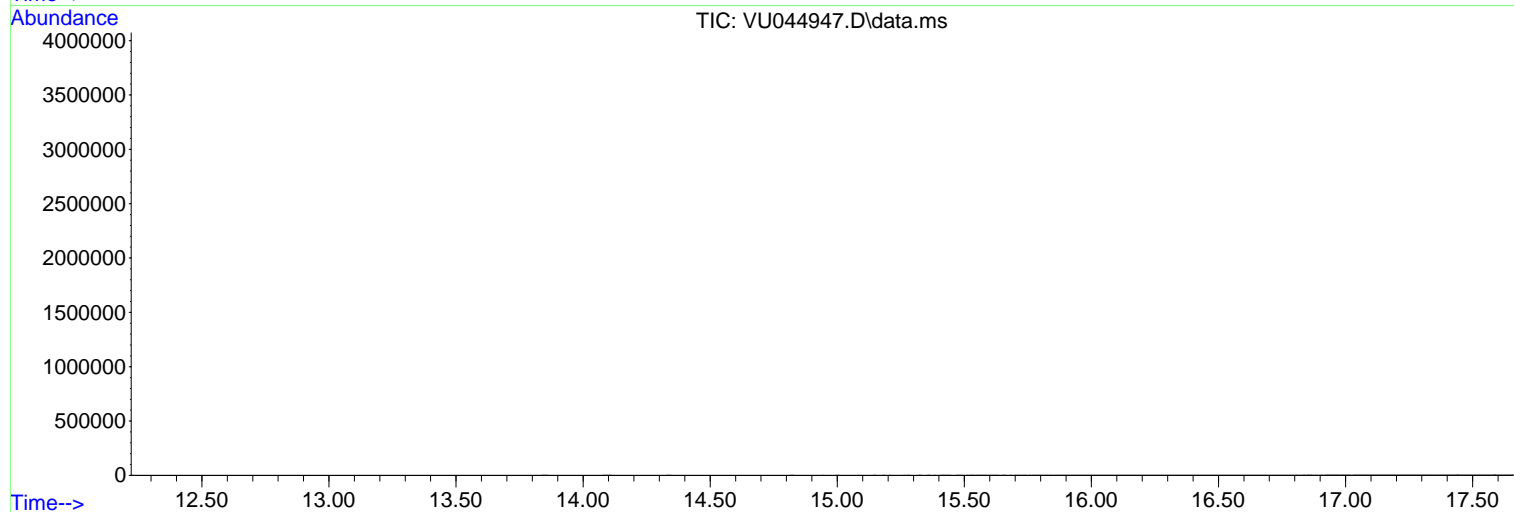
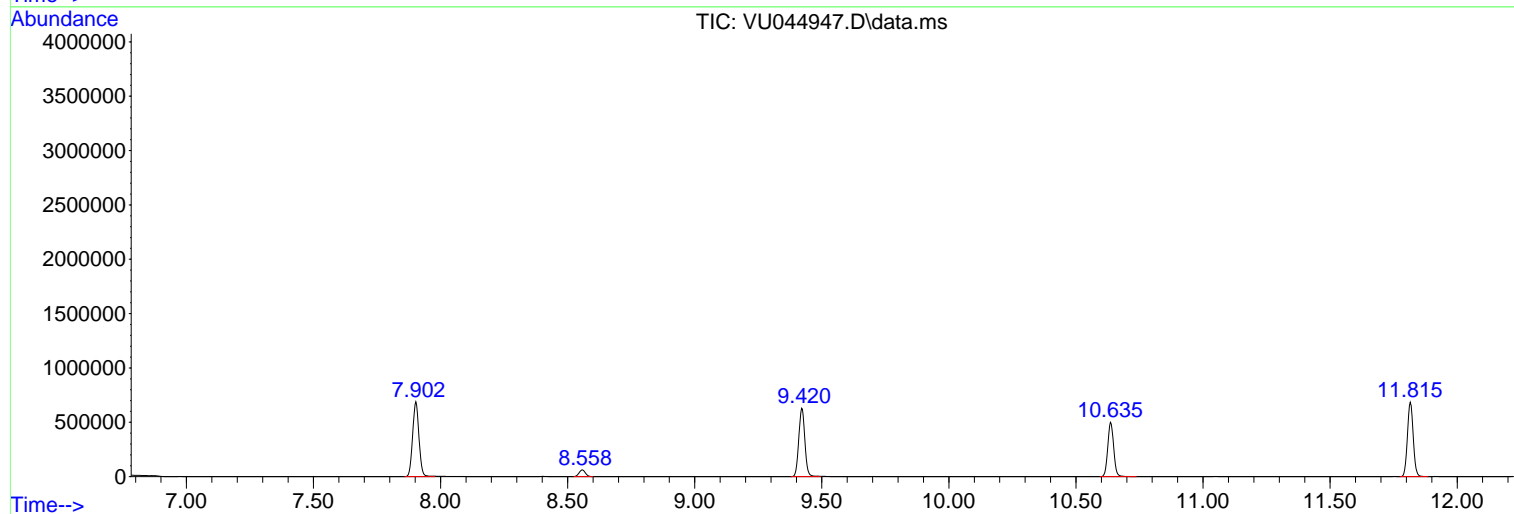
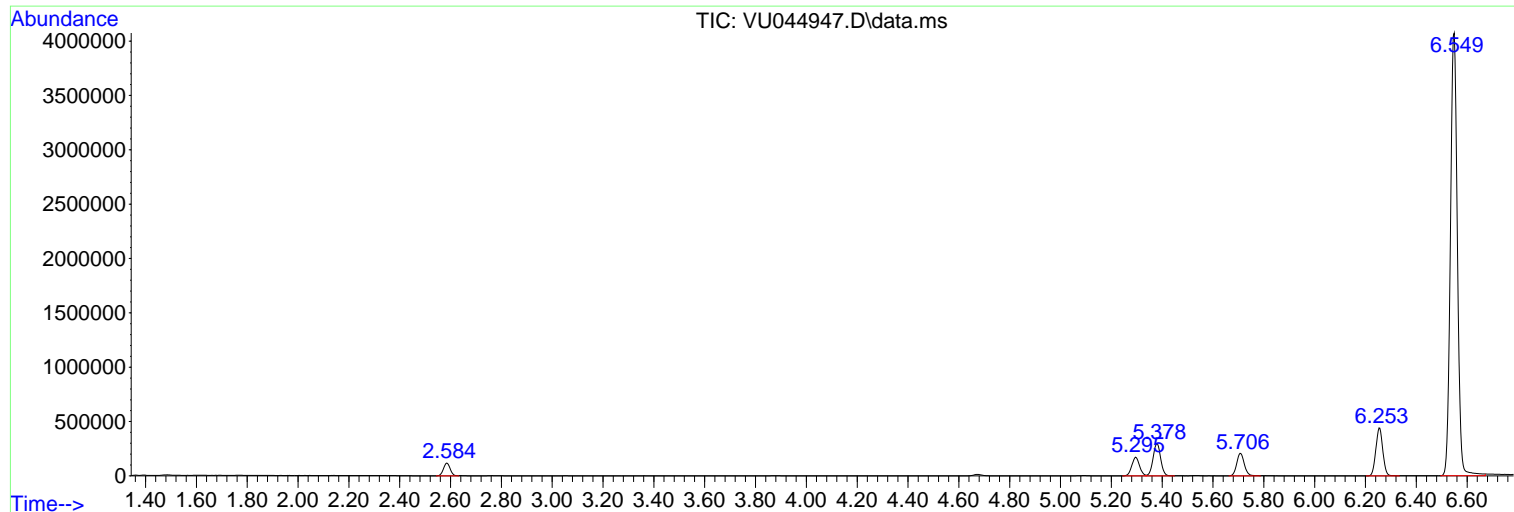
Sum of corrected areas: 14390500

Data Path : Z:\voasrv\HPCHEM1\MSVOA_U\Data\VU092821\
Data File : VU044947.D
Acq On : 28 Sep 2021 17:30
Operator : SY/MD
Sample : M3829-15
Misc : 5.0mL/MSVOA_U/WATER
ALS Vial : 20 Sample Multiplier: 1

Instrument :
MSVOA_U
ClientSampleId :
RE120D2-20210917

Quant Method : Z:\voasrv\HPCHEM1\MSVOA_U\Method\82U092821W.M
Quant Title : SW846 8260

TIC Library : C:\Database\NIST20.L
TIC Integration Parameters: LSCINT.P



Library Search Compound Report

Data Path : Z:\voasrv\HPCHEM1\MSVOA_U\Data\VU092821\
Data File : VU044947.D
Acq On : 28 Sep 2021 17:30
Operator : SY/MD
Sample : M3829-15
Misc : 5.0mL/MSVOA_U/WATER
ALS Vial : 20 Sample Multiplier: 1

Instrument :
MSVOA_U
ClientSampleId :
RE120D2-20210917

Quant Method : Z:\voasrv\HPCHEM1\MSVOA_U\Method\82U092821W.M
Quant Title : SW846 8260

TIC Library : C:\Database\NIST20.L
TIC Integration Parameters: LSCINT.P

No Library Search Compounds Detected

Data Path : Z:\voasrv\HPCHEM1\MSVOA_U\Data\VU092821\
Data File : VU044947.D
Acq On : 28 Sep 2021 17:30
Operator : SY/MD
Sample : M3829-15
Misc : 5.0mL/MSVOA_U/WATER
ALS Vial : 20 Sample Multiplier: 1

Instrument :
MSVOA_U
ClientSampleId :
RE120D2-20210917

Quant Method : Z:\voasrv\HPCHEM1\MSVOA_U\Method\82U092821W.M
Quant Title : SW846 8260

TIC Library : C:\Database\NIST20.L
TIC Integration Parameters: LSCINT.P

TIC Top Hit name	RT	EstConc	Units	Response	--Internal Standard--		
					#	RT	Resp Conc
