

Data Path : Z:\voasrv\HPCHEM1\MSVOA\_U\Data\VU092823\  
 Data File : VU055576.D  
 Acq On : 28 Sep 2023 14:24  
 Operator : MD/SY  
 Sample : 04579-05 10X  
 Misc : 25.0mL/MSVOA\_U/WATER  
 ALS Vial : 8 Sample Multiplier: 1

Instrument :  
 MSVOA\_U  
 ClientSampleId :  
 EYHY7

Integration Parameters: rteint.p  
 Integrator: RTE  
 Smoothing : ON Filtering: 5  
 Sampling : 1 Min Area: 3 % of largest Peak  
 Start Thrs: 0.1 Max Peaks: 100  
 Stop Thrs : 0 Peak Location: TOP

If leading or trailing edge < 100 prefer < Baseline drop else tangent >  
 Peak separation: 5

Method : Z:\voasrv\HPCHEM1\MSVOA\_U\Method\SFAMUTR091923WMA.M  
 Title : TRACE VOA SFAM1.0

Signal : TIC: VU055576.D\data.ms

peak #	R.T. min	first scan	max scan	last scan	PK TY	peak height	corr. area	corr. % max.	% of total
1	1.599	88	96	109	rBV2	158873	191531	22.91%	2.923%
2	1.914	186	194	209	rVB	109305	141098	16.87%	2.153%
3	2.566	384	397	412	rBV	178178	291914	34.91%	4.455%
4	3.042	534	545	559	rVB4	16711	32507	3.89%	0.496%
5	3.184	577	589	604	rVB2	4243	8659	1.04%	0.132%
6	4.640	1026	1042	1043	rBV	84800	132610	15.86%	2.024%
7	5.062	1157	1173	1200	rBV	164861	373835	44.71%	5.706%
8	5.724	1358	1379	1407	rBV2	315100	836178	100.00%	12.762%
9	6.248	1526	1542	1572	rBV	231967	463602	55.44%	7.076%
10	6.534	1622	1631	1642	rBV8	4316	8586	1.03%	0.131%
11	6.688	1666	1679	1696	rBV	191514	381959	45.68%	5.830%
12	7.563	1938	1951	1969	rBV	88184	167561	20.04%	2.557%
13	7.897	2041	2055	2074	rBV	372392	668432	79.94%	10.202%
14	8.180	2131	2143	2162	rBV	51951	95583	11.43%	1.459%
15	8.470	2223	2233	2245	rBV3	6454	12382	1.48%	0.189%
16	8.637	2273	2285	2325	rBV3	268052	668271	79.92%	10.199%
17	9.415	2514	2527	2554	rBV	350175	607467	72.65%	9.271%
18	10.753	2932	2943	2965	rVB	137345	229950	27.50%	3.510%
19	10.894	2975	2987	2998	rBV2	20417	34465	4.12%	0.526%
20	11.810	3260	3272	3293	rBV	373009	620157	74.17%	9.465%
21	12.190	3378	3390	3408	rBV	336814	572777	68.50%	8.742%
22	13.852	3895	3907	3917	rBV4	7080	12587	1.51%	0.192%

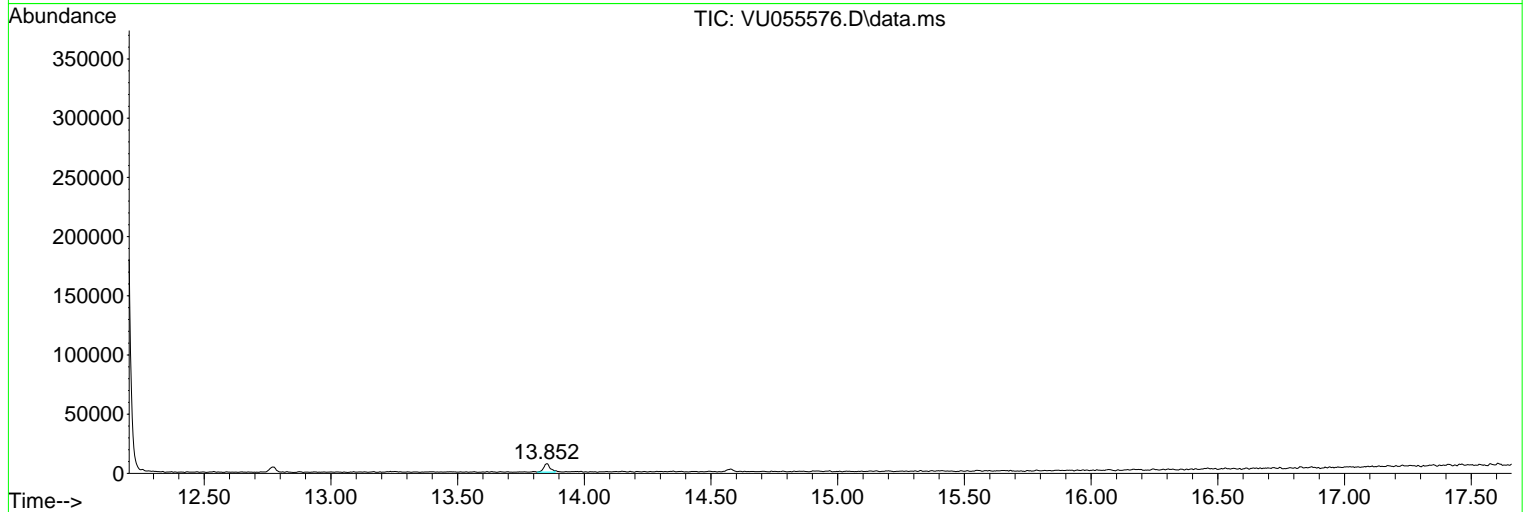
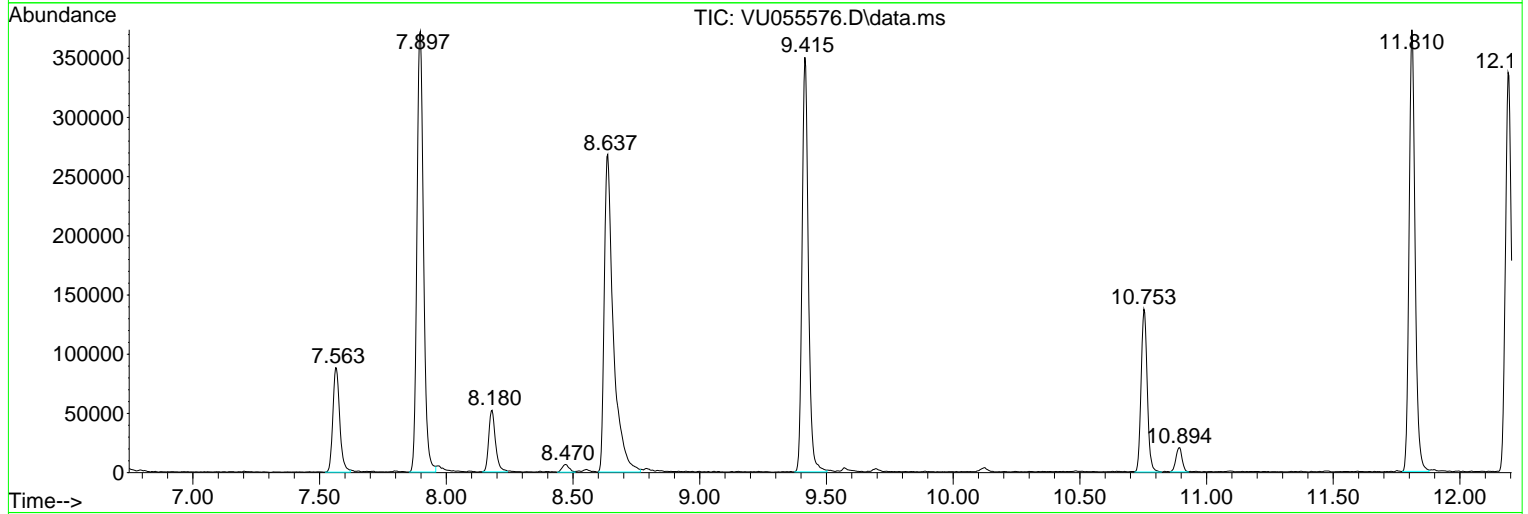
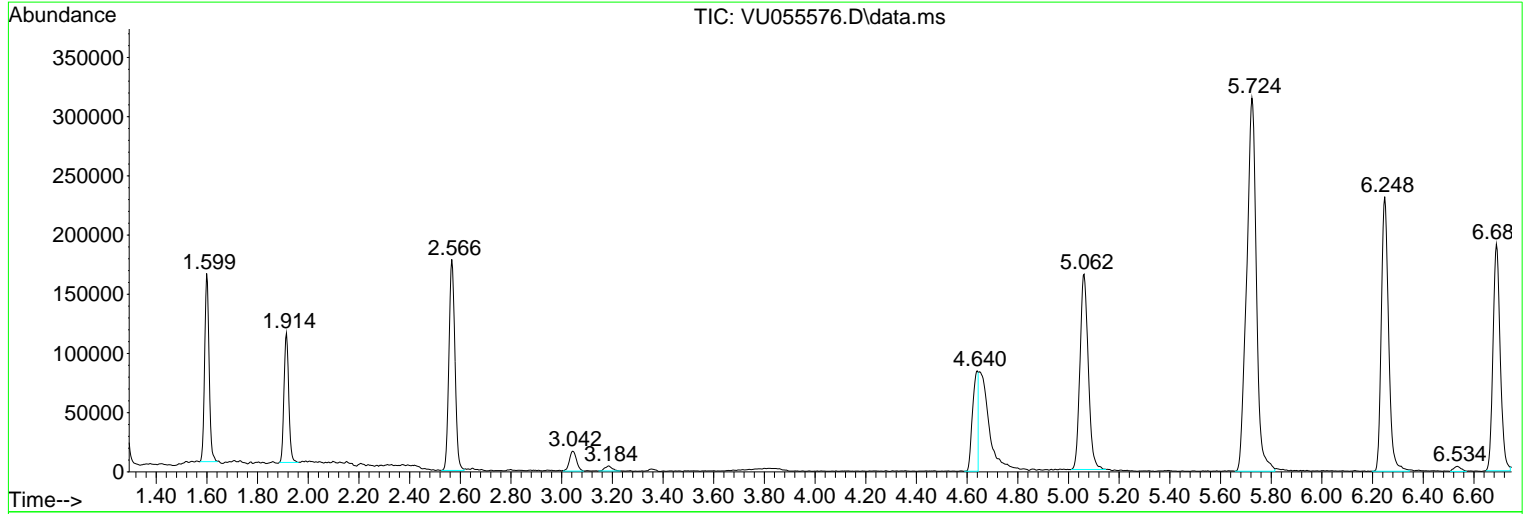
Sum of corrected areas: 6552111

Data Path : Z:\voasrv\HPCHEM1\MSVOA\_U\Data\VU092823\  
 Data File : VU055576.D  
 Acq On : 28 Sep 2023 14:24  
 Operator : MD/SY  
 Sample : 04579-05 10X  
 Misc : 25.0mL/MSVOA\_U/WATER  
 ALS Vial : 8 Sample Multiplier: 1

Instrument :  
 MSVOA\_U  
 ClientSampleId :  
 EYHY7

Quant Method : Z:\voasrv\HPCHEM1\MSVOA\_U\Method\SFAMUTR091923WMA.M  
 Quant Title : TRACE VOA SFAM1.0

TIC Library : C:\Database\NIST20.L  
 TIC Integration Parameters: LSCINT.P



Library Search Compound Report

Data Path : Z:\voasrv\HPCHEM1\MSVOA\_U\Data\VU092823\  
Data File : VU055576.D  
Acq On : 28 Sep 2023 14:24  
Operator : MD/SY  
Sample : 04579-05 10X  
Misc : 25.0mL/MSVOA\_U/WATER  
ALS Vial : 8 Sample Multiplier: 1

Instrument :  
MSVOA\_U  
ClientSampleId :  
EYHY7

Quant Method : Z:\voasrv\HPCHEM1\MSVOA\_U\Method\SFAMUTR091923WMA.M  
Quant Title : TRACE VOA SFAM1.0

TIC Library : C:\Database\NIST20.L  
TIC Integration Parameters: LSCINT.P

No Library Search Compounds Detected

\*\*\*\*\*

Data Path : Z:\voasrv\HPCHEM1\MSVOA\_U\Data\VU092823\  
Data File : VU055576.D  
Acq On : 28 Sep 2023 14:24  
Operator : MD/SY  
Sample : 04579-05 10X  
Misc : 25.0mL/MSVOA\_U/WATER  
ALS Vial : 8 Sample Multiplier: 1

Instrument :  
MSVOA\_U  
ClientSampleId :  
EYHY7

Quant Method : Z:\voasrv\HPCHEM1\MSVOA\_U\Method\SFAMUTR091923WMA.M  
Quant Title : TRACE VOA SFAM1.0

TIC Library : C:\Database\NIST20.L  
TIC Integration Parameters: LSCINT.P

TIC Top Hit name	RT	EstConc	Units	Response	--Internal Standard--		
					#	RT	Resp Conc

---