

Data Path : Z:\VOASRV\HPCHEM1\MSVOA U\DATA\VU092920\
 Data File : VU040354.D
 Acq On : 29 Sep 2020 13:22
 Operator : SY/MD
 Sample : L4188-05
 Misc : 25.0mL/MSVOA U/WATER
 ALS Vial : 10 Sample Multiplier: 1

Instrument :
 MSVOA_U
 ClientSampled :
 BG0R0

Quant Time: Sep 30 01:51:16 2020
 Quant Method : Z:\VOASRV\HPCHEM1\MSVOA_U\METHOD\SOMUTR092920WMA.M
 Quant Title : TRACE VOA SOM01.0
 QLast Update : Wed Sep 30 01:43:05 2020
 Response via : Initial Calibration

| Internal Standards | R.T. | QIon | Response | Conc | Units | Dev(Min) |
|----------------------------|-------|------|----------|------|-------|----------|
| 1) 1,4-Difluorobenzene | 6.26 | 114 | 134229 | 5.00 | ug/L | 0.00 |
| 28) Chlorobenzene-d5 | 9.42 | 117 | 135040 | 5.00 | ug/L | 0.00 |
| 60) 1,4-Dichlorobenzene-d4 | 11.81 | 152 | 60958 | 5.00 | ug/L | 0.00 |

System Monitoring Compounds

| | | | | | | |
|--------------------------------|--------|-------|----------|----------|------|---------|
| 4) Vinyl Chloride-d3 | 1.60 | 65 | 31052 | 4.67 | ug/L | 0.00 |
| Spiked Amount | 5.000 | Range | 40 - 130 | Recovery | = | 93.40% |
| 7) Chloroethane-d5 | 1.92 | 69 | 27234 | 4.68 | ug/L | 0.00 |
| Spiked Amount | 5.000 | Range | 65 - 130 | Recovery | = | 93.60% |
| 11) 1,1-Dichloroethene-d2 | 2.58 | 63 | 49264 | 3.08 | ug/L | 0.00 |
| Spiked Amount | 5.000 | Range | 60 - 125 | Recovery | = | 61.60% |
| 20) 2-Butanone-d5 | 4.65 | 46 | 157853 | 47.82 | ug/L | 0.00 |
| Spiked Amount | 50.000 | Range | 40 - 130 | Recovery | = | 95.64% |
| 24) Chloroform-d | 5.08 | 84 | 74515 | 4.71 | ug/L | 0.00 |
| Spiked Amount | 5.000 | Range | 70 - 125 | Recovery | = | 94.20% |
| 26) 1,2-Dichloroethane-d4 | 5.72 | 65 | 45728 | 4.75 | ug/L | 0.00 |
| Spiked Amount | 5.000 | Range | 70 - 130 | Recovery | = | 95.00% |
| 32) Benzene-d6 | 5.74 | 84 | 132548 | 4.88 | ug/L | 0.00 |
| Spiked Amount | 5.000 | Range | 70 - 125 | Recovery | = | 97.60% |
| 36) 1,2-Dichloropropane-d6 | 6.70 | 67 | 47369 | 4.77 | ug/L | 0.00 |
| Spiked Amount | 5.000 | Range | 60 - 140 | Recovery | = | 95.40% |
| 41) Toluene-d8 | 7.91 | 98 | 107312 | 4.55 | ug/L | 0.00 |
| Spiked Amount | 5.000 | Range | 70 - 130 | Recovery | = | 91.00% |
| 43) trans-1,3-Dichloropropene- | 8.19 | 79 | 19291 | 4.76 | ug/L | 0.00 |
| Spiked Amount | 5.000 | Range | 55 - 130 | Recovery | = | 95.20% |
| 46) 2-Hexanone-d5 | 8.64 | 63 | 111092 | 46.60 | ug/L | 0.00 |
| Spiked Amount | 50.000 | Range | 45 - 130 | Recovery | = | 93.20% |
| 57) 1,1,2,2-Tetrachloroethane- | 10.75 | 84 | 43582 | 4.51 | ug/L | 0.00 |
| Spiked Amount | 5.000 | Range | 65 - 120 | Recovery | = | 90.20% |
| 64) 1,2-Dichlorobenzene-d4 | 12.19 | 152 | 48295 | 5.23 | ug/L | 0.00 |
| Spiked Amount | 5.000 | Range | 80 - 120 | Recovery | = | 104.60% |

Target Compounds

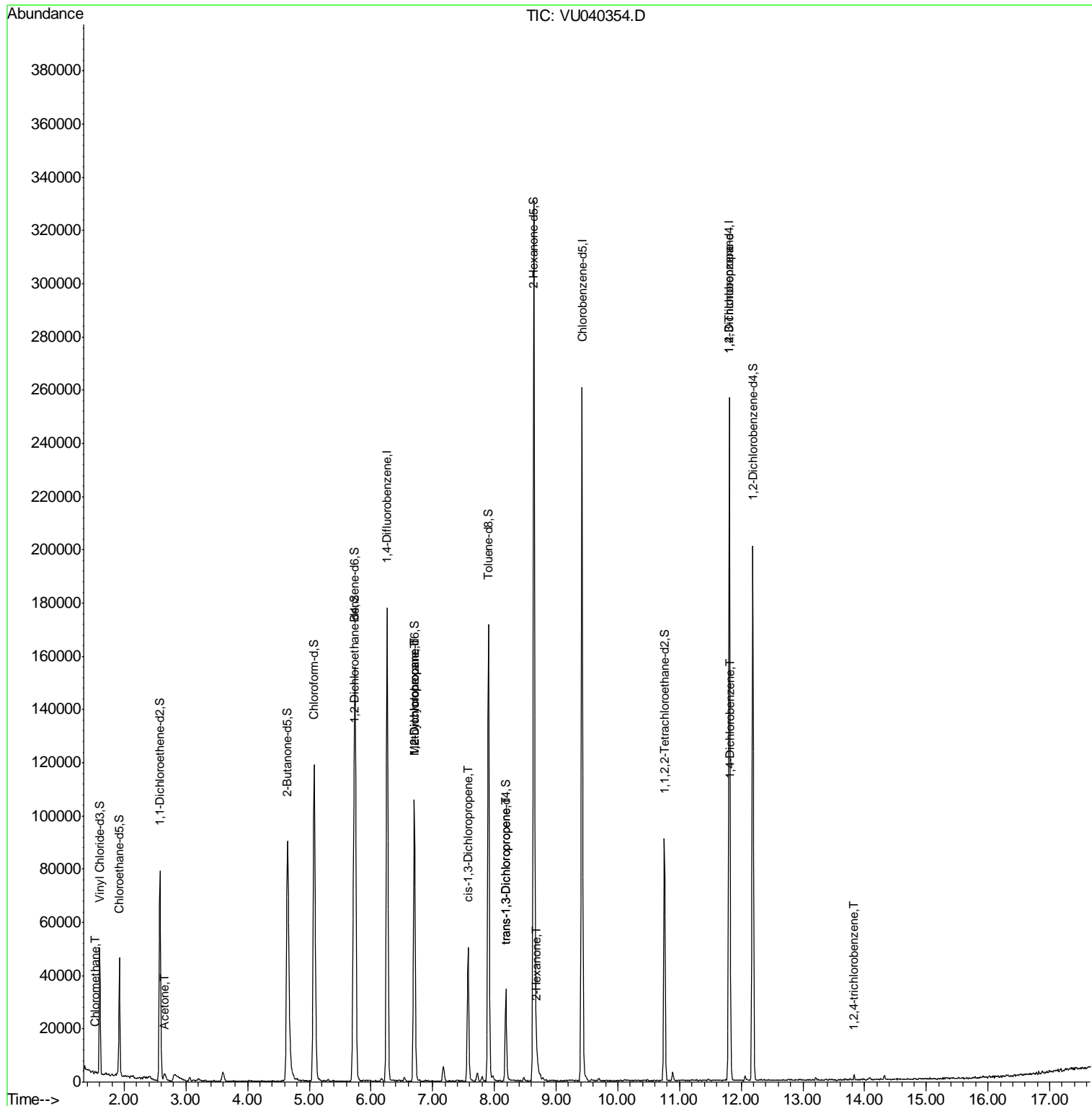
| Target Compounds | R.T. | QIon | Response | Conc | Units | Ovalue |
|-------------------------------|-------|------|----------|-------|--------|--------|
| 3) Chloromethane | 1.52 | 50 | 695 | 0.053 | ug/L | 87 |
| 13) Acetone | 2.65 | 43 | 4714 | 1.714 | ug/L | 95 |
| 35) Methylcyclohexane | 6.70 | 83 | 11117 | 0.631 | ug/L # | 14 |
| 37) 1,2-Dichloropropane | 6.70 | 63 | 5322 | 0.422 | ug/L # | 88 |
| 39) cis-1,3-Dichloropropene | 7.57 | 75 | 1294 | 0.077 | ug/L # | 69 |
| 44) trans-1,3-Dichloropropene | 8.18 | 75 | 1089 | 0.070 | ug/L # | 68 |
| 48) 2-Hexanone | 8.69 | 43 | 4167 | 0.573 | ug/L # | 81 |
| 59) 1,2,3-Trichloropropane | 11.81 | 75 | 9420 | 1.031 | ug/L | 91 |
| 63) 1,4-Dichlorobenzene | 11.83 | 146 | 929 | 0.044 | ug/L | 90 |
| 68) 1,2,4-trichlorobenzene | 13.83 | 180 | 646 | 0.056 | ug/L # | 80 |

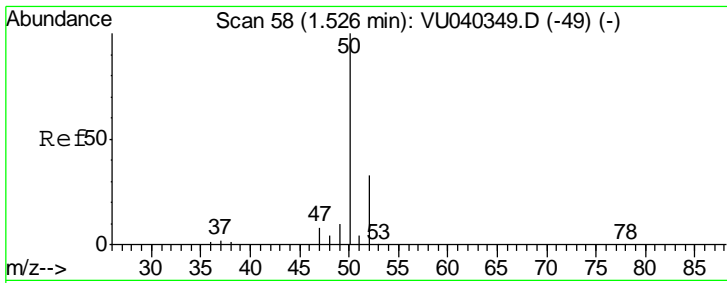
(#) = qualifier out of range (m) = manual integration (+) = signals summed

Data Path : Z:\VOASRV\HPCHEM1\MSVOA U\DATA\VU092920\
 Data File : VU040354.D
 Acq On : 29 Sep 2020 13:22
 Operator : SY/MD
 Sample : L4188-05
 Misc : 25.0mL/MSVOA U/WATER
 ALS Vial : 10 Sample Multiplier: 1

Instrument :
 MSVOA_U
 ClientSampleId :
 BG0R0

Quant Time: Sep 30 01:51:16 2020
 Quant Method : Z:\VOASRV\HPCHEM1\MSVOA_U\METHOD\SOMUTR092920WMA.M
 Quant Title : TRACE VOA SOM01.0
 QLast Update : Wed Sep 30 01:43:05 2020
 Response via : Initial Calibration

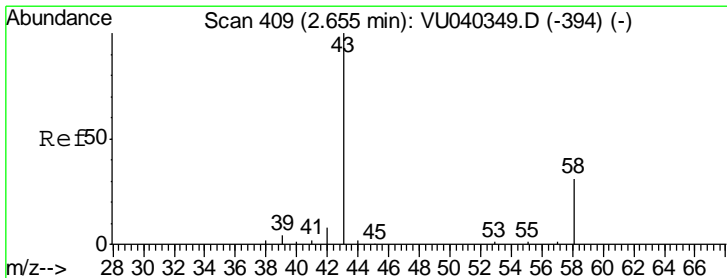
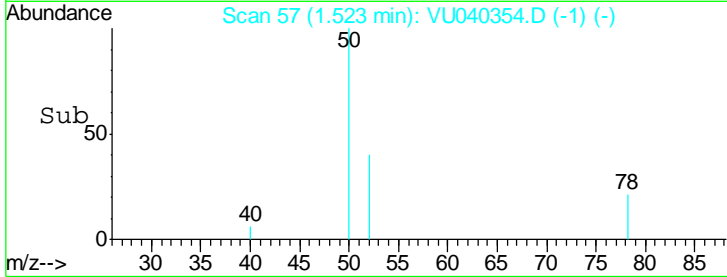
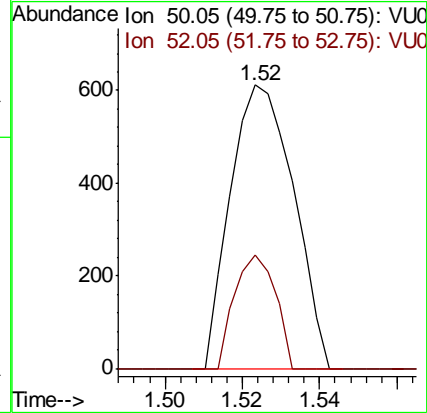
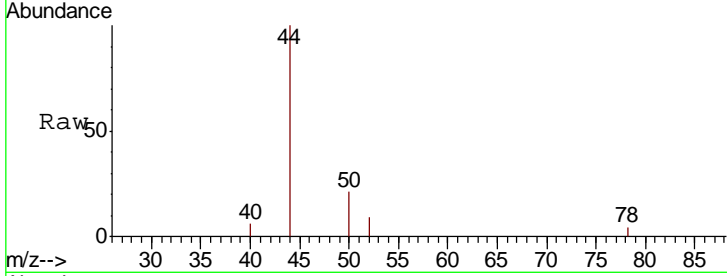




#3
 Chloromethane
 Concen: 0.053 ug/L
 RT: 1.52 min Scan# 57
 Delta R.T. -0.00 min
 Lab File: VU040354.D
 Acq: 29 Sep 2020 13:22

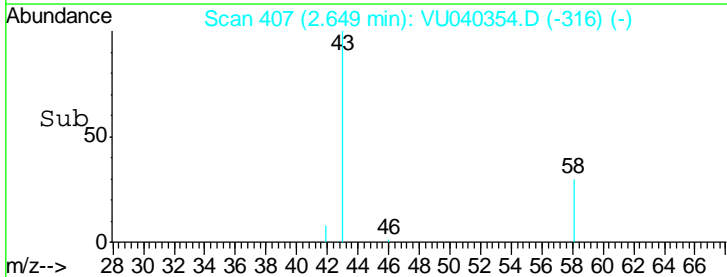
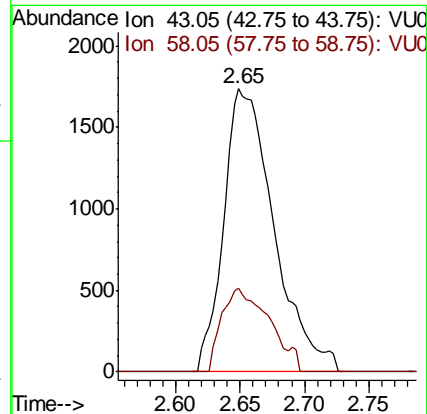
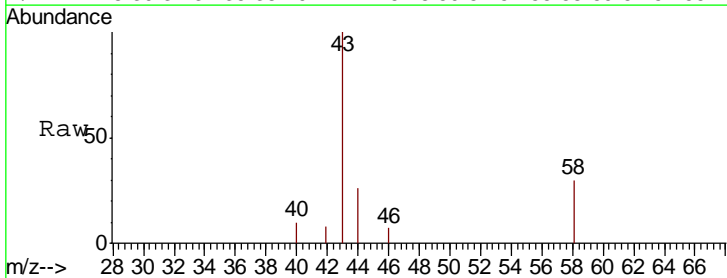
Instrument :
 MSVOA_U
 ClientSampled :
 BG0R0

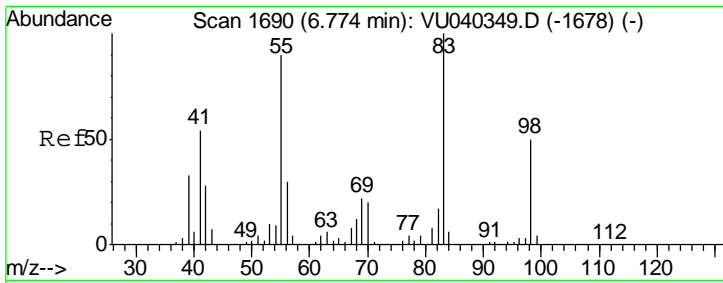
| Tgt Ion | Resp | Lower | Upper |
|---------|------|-------|-------|
| 50 | 695 | | |
| 52 | 40.0 | 23.0 | 42.6 |



#13
 Acetone
 Concen: 1.714 ug/L
 RT: 2.65 min Scan# 407
 Delta R.T. -0.01 min
 Lab File: VU040354.D
 Acq: 29 Sep 2020 13:22

| Tgt Ion | Resp | Lower | Upper |
|---------|------|-------|-------|
| 43 | 4714 | | |
| 58 | 28.0 | 0.0 | 61.8 |

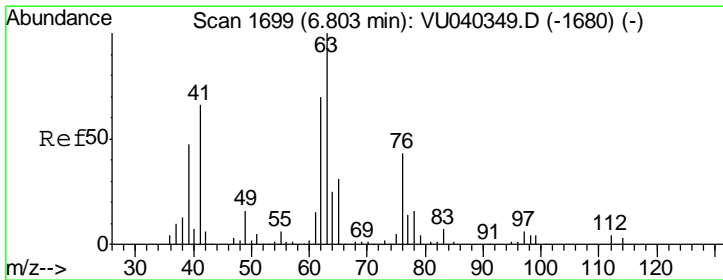
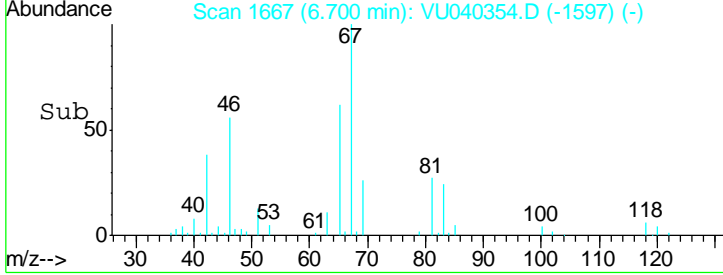
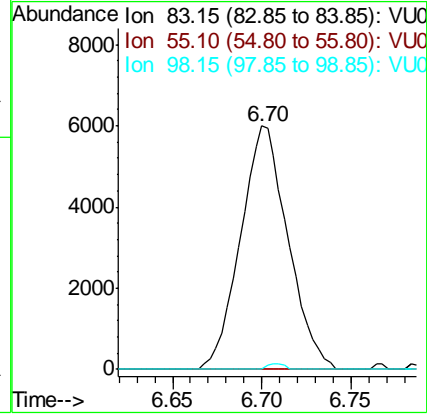
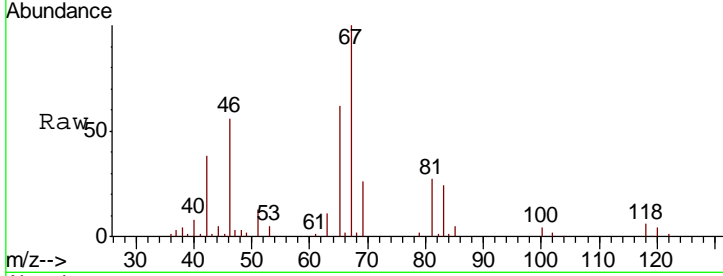




#35
 Methylcyclohexane
 Concen: 0.631 ug/L
 RT: 6.70 min Scan# 1667
 Delta R.T. -0.07 min
 Lab File: VU040354.D
 Acq: 29 Sep 2020 13:22

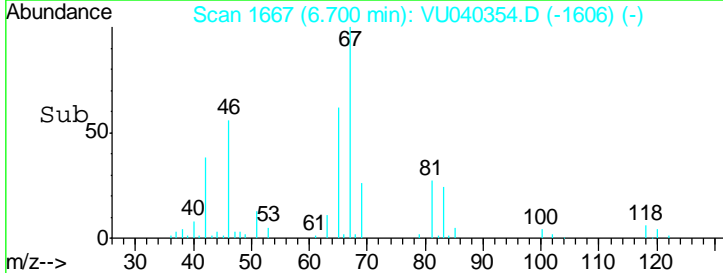
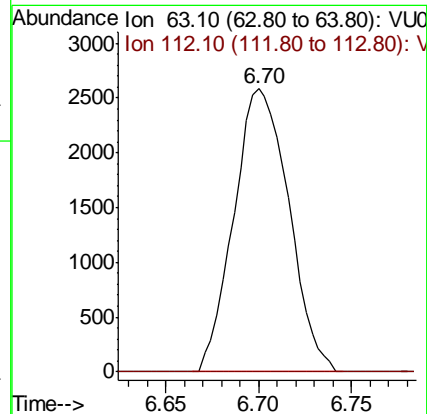
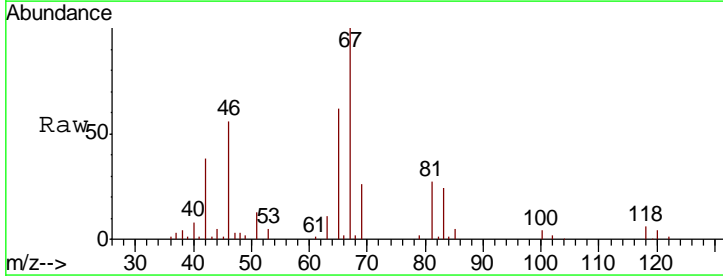
Instrument :
 MSVOA_U
 ClientSampled :
 BG0R0

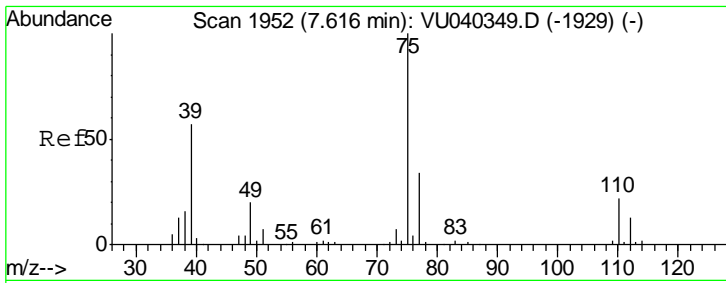
| Tgt Ion | Resp | Lower | Upper |
|---------|-------|-------|--------|
| 83 | 11117 | | |
| 55 | 0.0 | 71.4 | 107.2# |
| 98 | 0.9 | 38.5 | 57.7# |



#37
 1,2-Dichloropropane
 Concen: 0.422 ug/L
 RT: 6.70 min Scan# 1667
 Delta R.T. -0.10 min
 Lab File: VU040354.D
 Acq: 29 Sep 2020 13:22

| Tgt Ion | Resp | Lower | Upper |
|---------|------|-------|-------|
| 63 | 5322 | | |
| 112 | 0.0 | 3.2 | 4.8# |

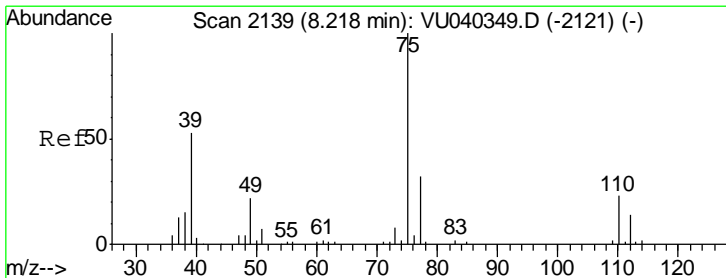
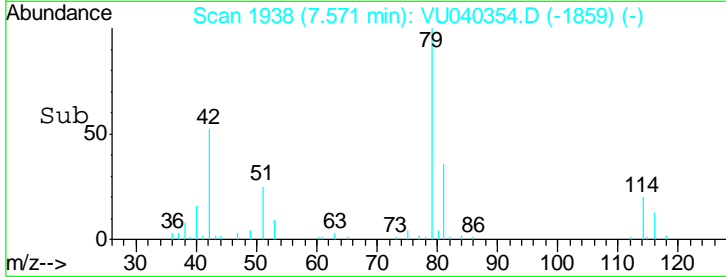
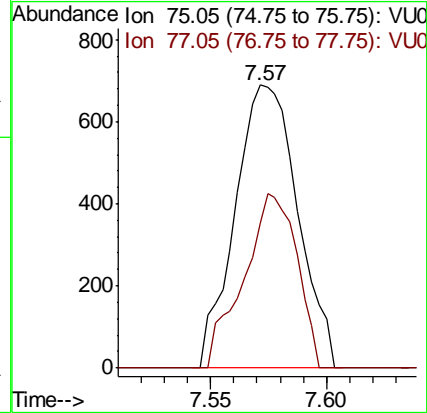
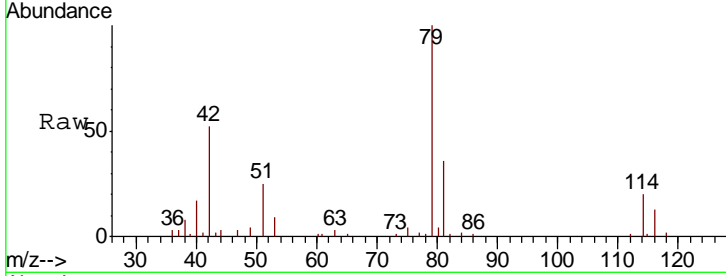




#39
 cis-1,3-Dichloropropene
 Concen: 0.077 ug/L
 RT: 7.57 min Scan# 1938
 Delta R.T. -0.05 min
 Lab File: VU040354.D
 Acq: 29 Sep 2020 13:22

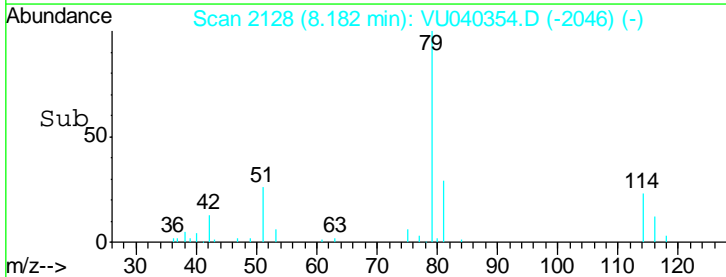
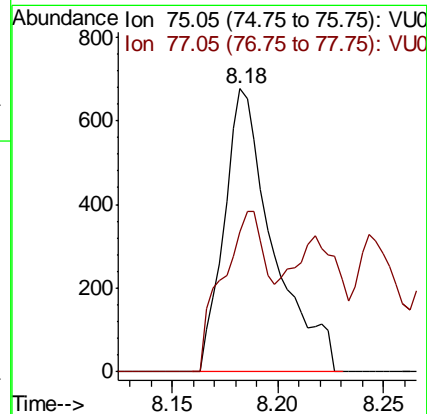
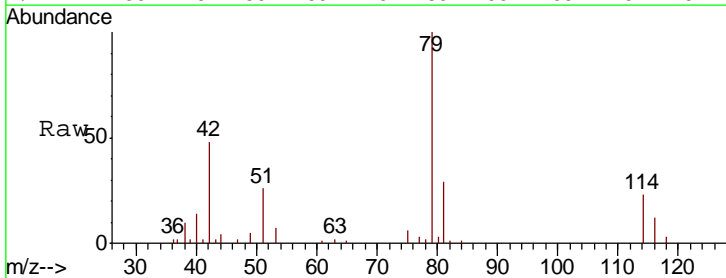
Instrument :
 MSVOA_U
 ClientSampled :
 BG0R0

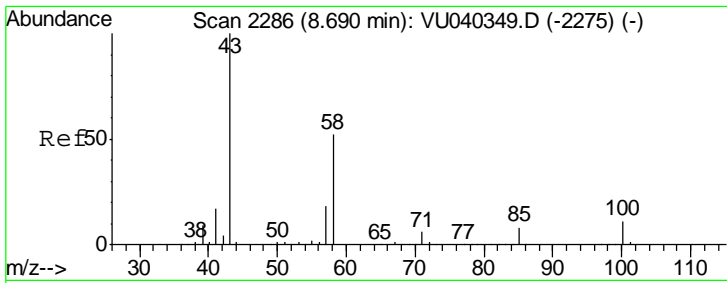
Tgt Ion: 75 Resp: 1294
 Ion Ratio Lower Upper
 75 100
 77 51.4 23.5 43.7#



#44
 trans-1,3-Dichloropropene
 Concen: 0.070 ug/L
 RT: 8.18 min Scan# 2128
 Delta R.T. -0.04 min
 Lab File: VU040354.D
 Acq: 29 Sep 2020 13:22

Tgt Ion: 75 Resp: 1089
 Ion Ratio Lower Upper
 75 100
 77 49.7 22.3 41.3#

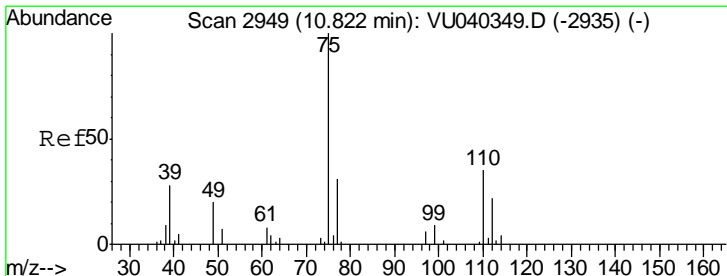
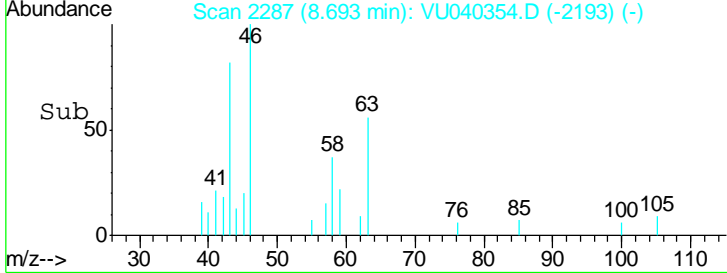
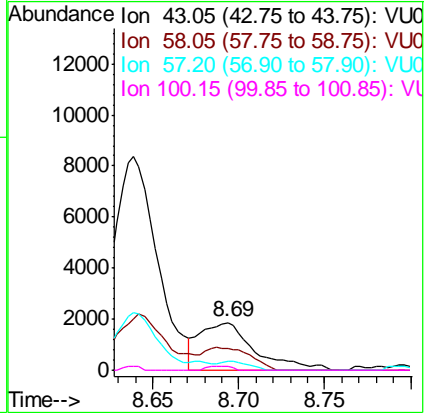
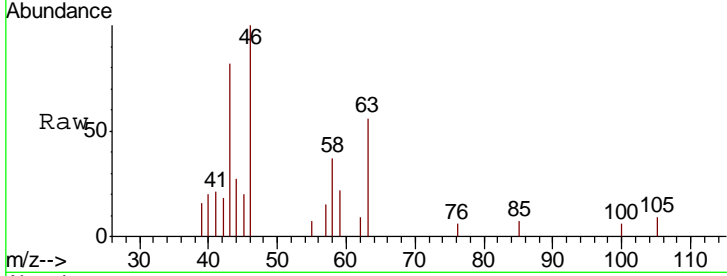




#48
 2-Hexanone
 Concen: 0.573 ug/L
 RT: 8.69 min Scan# 2287
 Delta R.T. 0.00 min
 Lab File: VU040354.D
 Acq: 29 Sep 2020 13:22

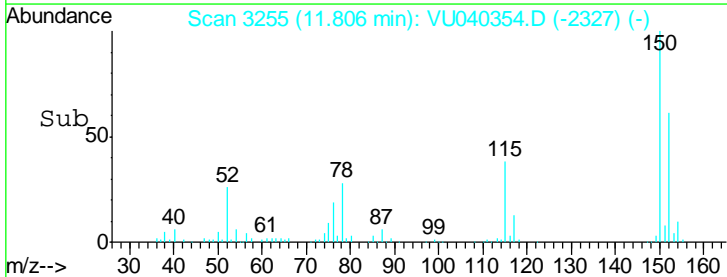
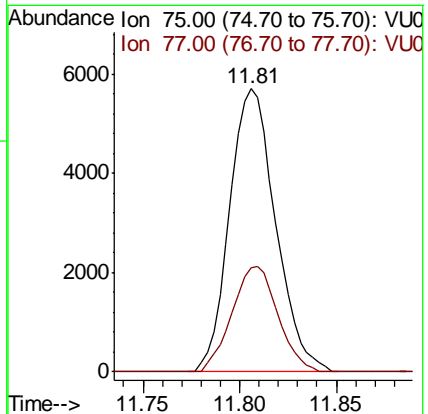
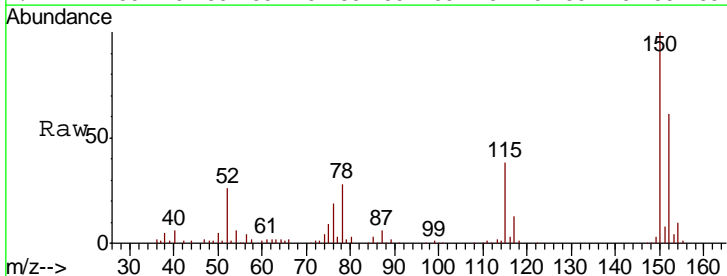
Instrument :
 MSVOA_U
 ClientSampled :
 BG0R0

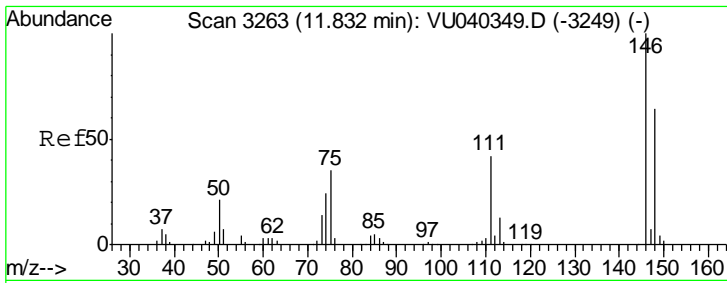
| Tgt Ion | Resp | Lower | Upper |
|---------|------|-------|-------|
| 43 | 100 | | |
| 58 | 38.1 | 41.0 | 61.4# |
| 57 | 9.2 | 14.6 | 22.0# |
| 100 | 3.6 | 8.2 | 12.4# |



#59
 1,2,3-Trichloropropane
 Concen: 1.031 ug/L
 RT: 11.81 min Scan# 3255
 Delta R.T. 0.98 min
 Lab File: VU040354.D
 Acq: 29 Sep 2020 13:22

| Tgt Ion | Resp | Lower | Upper |
|---------|------|-------|-------|
| 75 | 100 | | |
| 77 | 37.2 | 25.7 | 38.5 |

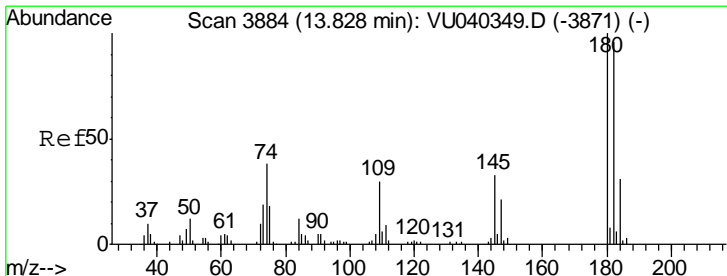
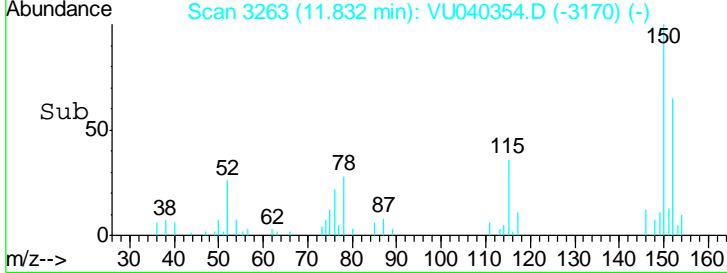
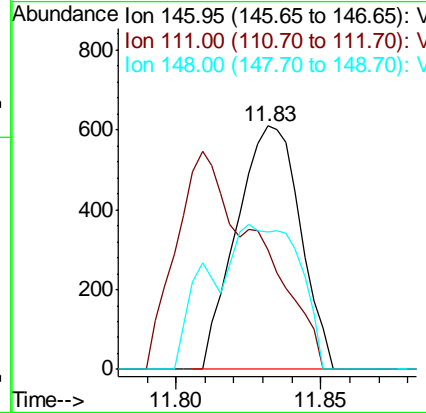
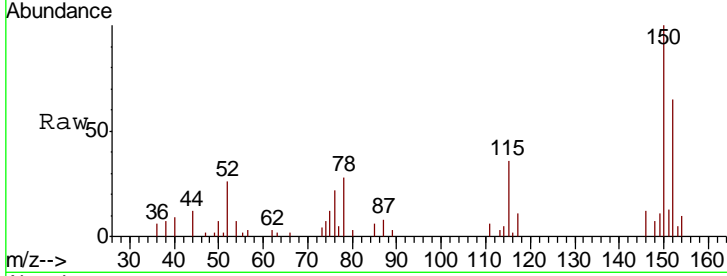




#63
 1,4-Dichlorobenzene
 Concen: 0.044 ug/L
 RT: 11.83 min Scan# 3263
 Delta R.T. -0.00 min
 Lab File: VU040354.D
 Acq: 29 Sep 2020 13:22

Instrument :
 MSVOA_U
 ClientSampled :
 BG0R0

| Tgt Ion | Resp | Lower | Upper |
|---------|------|-------|-------|
| 146 | 100 | | |
| 111 | 49.2 | 29.2 | 54.2 |
| 148 | 56.4 | 44.4 | 82.4 |



#68
 1,2,4-trichlorobenzene
 Concen: 0.056 ug/L
 RT: 13.83 min Scan# 3886
 Delta R.T. 0.01 min
 Lab File: VU040354.D
 Acq: 29 Sep 2020 13:22

| Tgt Ion | Resp | Lower | Upper |
|---------|-------|-------|-------|
| 180 | 100 | | |
| 182 | 113.6 | 76.6 | 115.0 |
| 145 | 17.8 | 26.3 | 39.5# |

