

Data Path : Z:\VOASRV\HPCHEM1\MSVOA U\DATA\VU093020\  
 Data File : VU040400.D  
 Acq On : 30 Sep 2020 15:40  
 Operator : SY/MD  
 Sample : L4186-11  
 Misc : 25.0mL/MSVOA U/WATER  
 ALS Vial : 14 Sample Multiplier: 1

Instrument :  
 MSVOA\_U  
 ClientSampleId :  
 BG0F1

Quant Time: Oct 01 03:07:58 2020  
 Quant Method : Z:\VOASRV\HPCHEM1\MSVOA\_U\METHOD\SOMUTR092920WMA.M  
 Quant Title : TRACE VOA SOM01.0  
 QLast Update : Thu Oct 01 03:05:40 2020  
 Response via : Initial Calibration

Internal Standards	R.T.	QIon	Response	Conc	Units	Dev(Min)
1) 1,4-Difluorobenzene	6.26	114	136975	5.00	ug/L	0.00
28) Chlorobenzene-d5	9.42	117	139442	5.00	ug/L	0.00
60) 1,4-Dichlorobenzene-d4	11.81	152	62381	5.00	ug/L	0.00

## System Monitoring Compounds

4) Vinyl Chloride-d3	1.60	65	29972	4.42	ug/L	0.00
Spiked Amount	5.000	Range	40 - 130	Recovery	=	88.40%
7) Chloroethane-d5	1.92	69	26310	4.43	ug/L	0.00
Spiked Amount	5.000	Range	65 - 130	Recovery	=	88.60%
11) 1,1-Dichloroethene-d2	2.58	63	45284	2.78	ug/L	0.00
Spiked Amount	5.000	Range	60 - 125	Recovery	=	55.60%#
20) 2-Butanone-d5	4.66	46	159174	47.25	ug/L	0.00
Spiked Amount	50.000	Range	40 - 130	Recovery	=	94.50%
24) Chloroform-d	5.08	84	71206	4.41	ug/L	0.00
Spiked Amount	5.000	Range	70 - 125	Recovery	=	88.20%
26) 1,2-Dichloroethane-d4	5.72	65	42749	4.35	ug/L	0.00
Spiked Amount	5.000	Range	70 - 130	Recovery	=	87.00%
32) Benzene-d6	5.74	84	119748	4.27	ug/L	0.00
Spiked Amount	5.000	Range	70 - 125	Recovery	=	85.40%
36) 1,2-Dichloropropane-d6	6.70	67	44650	4.35	ug/L	0.00
Spiked Amount	5.000	Range	60 - 140	Recovery	=	87.00%
41) Toluene-d8	7.91	98	93673	3.85	ug/L	0.00
Spiked Amount	5.000	Range	70 - 130	Recovery	=	77.00%
43) trans-1,3-Dichloropropene-	8.19	79	16642	3.98	ug/L	0.00
Spiked Amount	5.000	Range	55 - 130	Recovery	=	79.60%
46) 2-Hexanone-d5	8.64	63	104822	42.58	ug/L	0.00
Spiked Amount	50.000	Range	45 - 130	Recovery	=	85.16%
57) 1,1,2,2-Tetrachloroethane-	10.75	84	42442	4.25	ug/L	0.00
Spiked Amount	5.000	Range	65 - 120	Recovery	=	85.00%
64) 1,2-Dichlorobenzene-d4	12.19	152	44539	4.71	ug/L	0.00
Spiked Amount	5.000	Range	80 - 120	Recovery	=	94.20%

## Target Compounds

Target Compounds	R.T.	QIon	Response	Conc	Units	Ovalue
3) Chloromethane	1.52	50	592	0.044	ug/L	91
5) Vinyl chloride	1.61	62	433679	32.755	ug/L	98
8) Chloroethane	1.96	64	605	0.077	ug/L #	52
12) 1,1-Dichloroethene	2.58	96	693	0.066	ug/L #	1
13) Acetone	2.66	43	2394	0.853	ug/L	72
14) Carbon disulfide	2.81	76	2581	0.078	ug/L	99
18) trans-1,2-Dichloroethene	3.37	96	5411	0.502	ug/L	94
19) 1,1-Dichloroethane	3.88	63	961	0.043	ug/L	94
22) cis-1,2-Dichloroethene	4.69	96	62093	5.204	ug/L	98
33) Benzene	5.79	78	4305	0.092	ug/L	100
35) Methylcyclohexane	6.70	83	10523	0.578	ug/L #	13
37) 1,2-Dichloropropane	6.71	63	5432	0.417	ug/L #	88
44) trans-1,3-Dichloropropene	8.18	75	644	0.040	ug/L #	71
48) 2-Hexanone	8.64	43	14803	1.970	ug/L #	71
51) Chlorobenzene	9.45	112	1917	0.062	ug/L #	86
53) m,p-Xylene	9.69	106	2561	0.132	ug/L	82
59) 1,2,3-Trichloropropane	11.81	75	9236	0.979	ug/L	97

Data Path : Z:\VOASRV\HPCHEM1\MSVOA U\DATA\VU093020\  
 Data File : VU040400.D  
 Acq On : 30 Sep 2020 15:40  
 Operator : SY/MD  
 Sample : L4186-11  
 Misc : 25.0mL/MSVOA U/WATER  
 ALS Vial : 14 Sample Multiplier: 1

Instrument :  
 MSVOA\_U  
 ClientSampleId :  
 BG0F1

Quant Time: Oct 01 03:07:58 2020  
 Quant Method : Z:\VOASRV\HPCHEM1\MSVOA\_U\METHOD\SOMUTR092920WMA.M  
 Quant Title : TRACE VOA SOM01.0  
 QLast Update : Thu Oct 01 03:05:40 2020  
 Response via : Initial Calibration

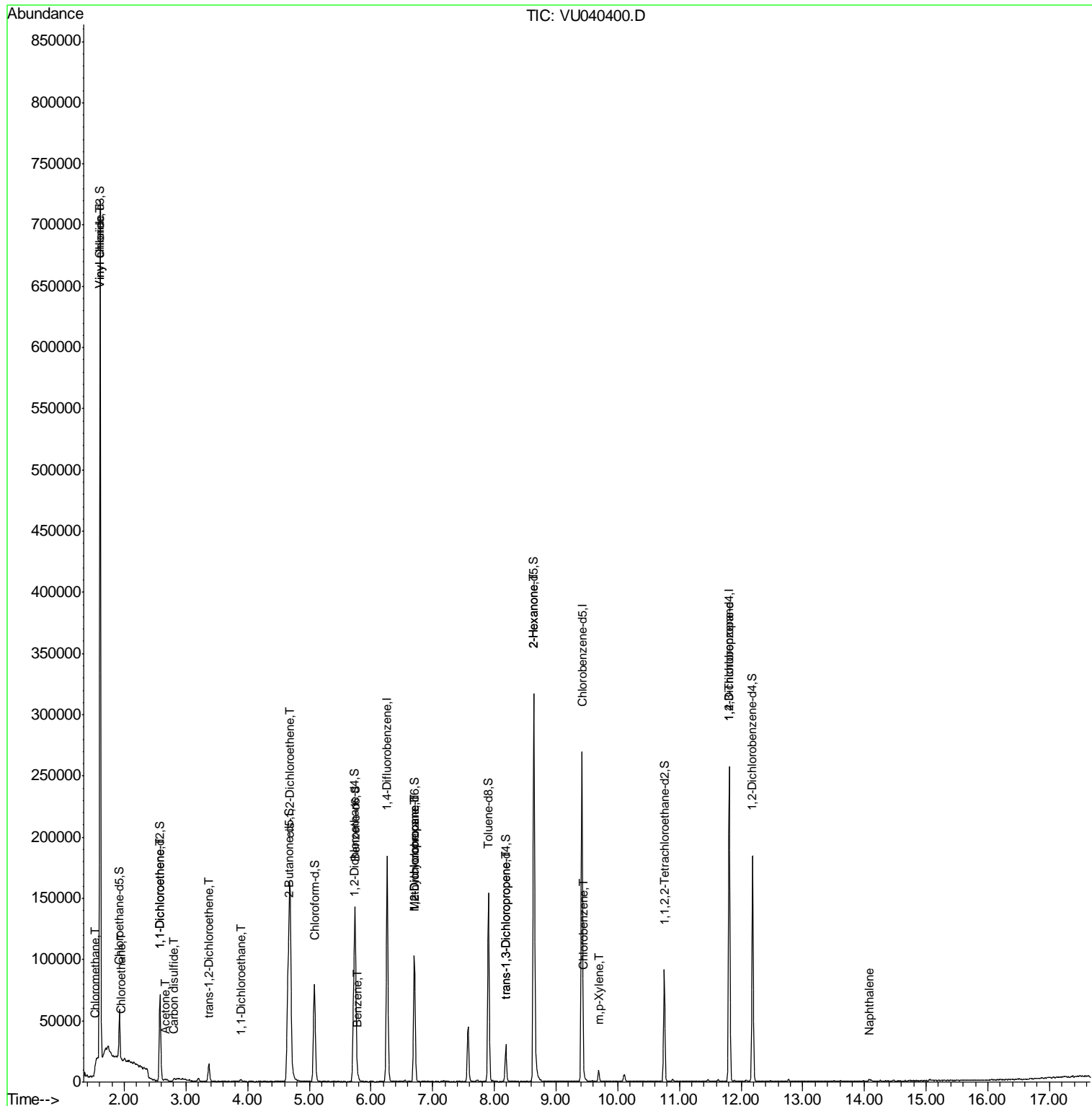
Internal Standards	R.T.	QIon	Response	Conc	Units	Dev(Min)
69) Naphthalene	14.07	128	1447	0.071	ug/L #	84

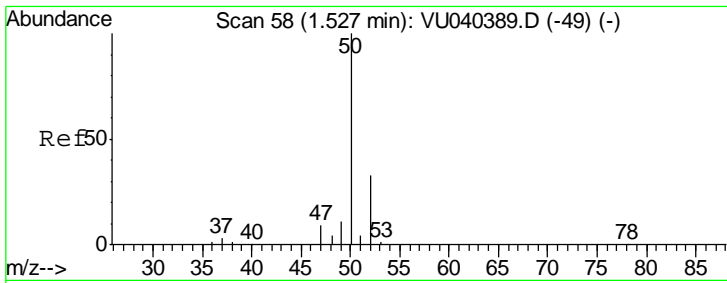
(#) = qualifier out of range (m) = manual integration (+) = signals summed

Data Path : Z:\VOASRV\HPCHEM1\MSVOA U\DATA\VU093020\  
 Data File : VU040400.D  
 Acq On : 30 Sep 2020 15:40  
 Operator : SY/MD  
 Sample : L4186-11  
 Misc : 25.0mL/MSVOA U/WATER  
 ALS Vial : 14 Sample Multiplier: 1

Instrument :  
 MSVOA\_U  
 ClientSampled :  
 BG0F1

Quant Time: Oct 01 03:07:58 2020  
 Quant Method : Z:\VOASRV\HPCHEM1\MSVOA\_U\METHOD\SOMUTR092920WMA.M  
 Quant Title : TRACE VOA SOM01.0  
 QLast Update : Thu Oct 01 03:05:40 2020  
 Response via : Initial Calibration

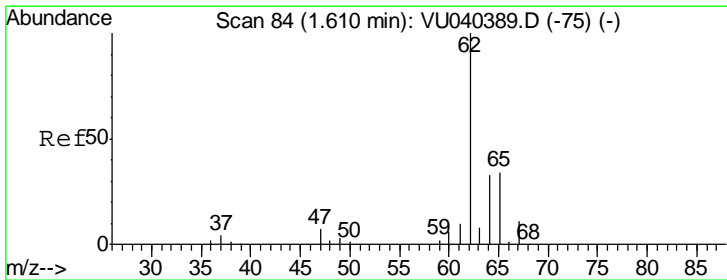
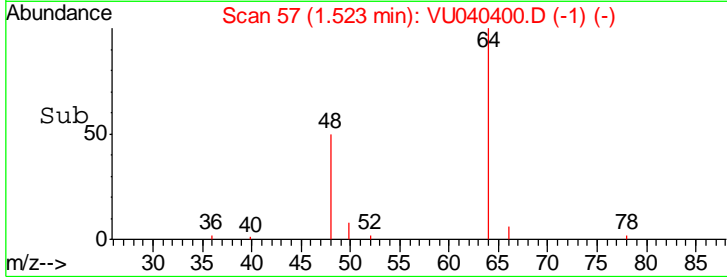
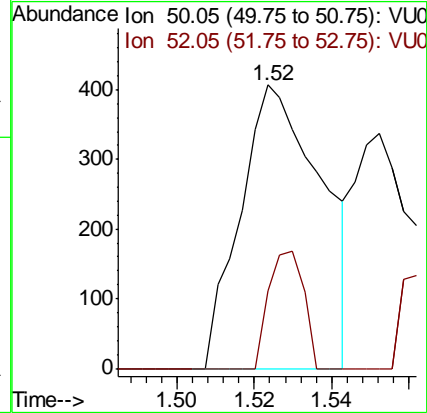
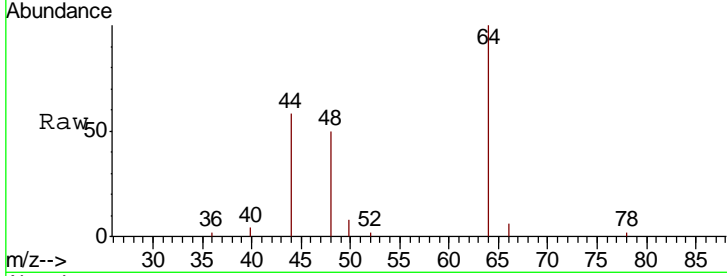




#3  
 Chloromethane  
 Concen: 0.044 ug/L  
 RT: 1.52 min Scan# 57  
 Delta R.T. -0.00 min  
 Lab File: VU040400.D  
 Acq: 30 Sep 2020 15:40

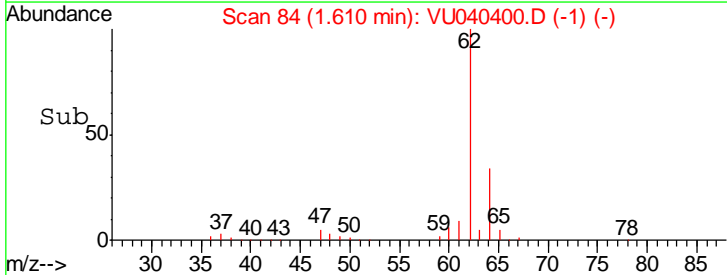
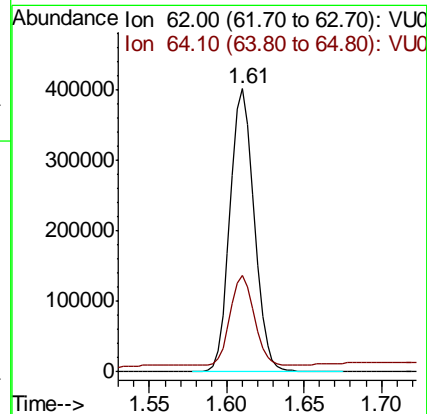
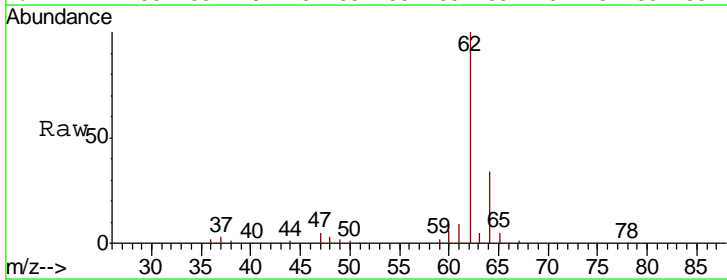
Instrument :  
 MSVOA\_U  
 ClientSampled :  
 BG0F1

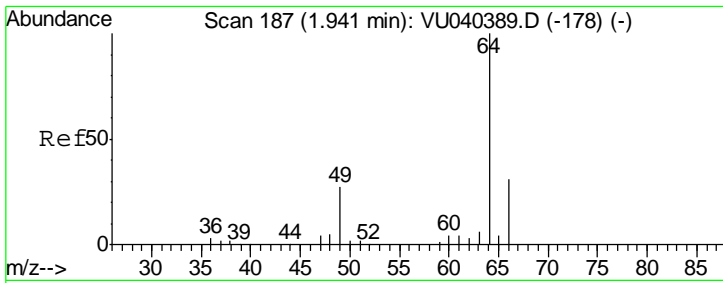
Tgt Ion	Resp	Lower	Upper
50	592		
52	27.5	23.0	42.6



#5  
 Vinyl chloride  
 Concen: 32.755 ug/L  
 RT: 1.61 min Scan# 84  
 Delta R.T. 0.00 min  
 Lab File: VU040400.D  
 Acq: 30 Sep 2020 15:40

Tgt Ion	Resp	Lower	Upper
62	433679		
64	33.9	23.0	42.8

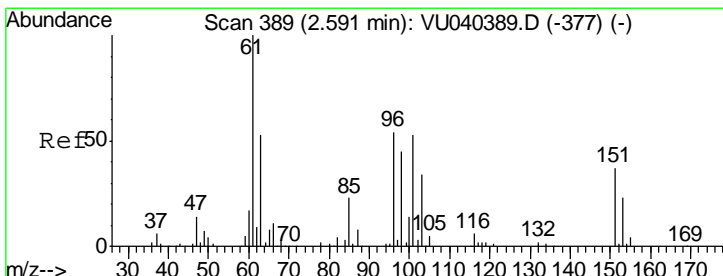
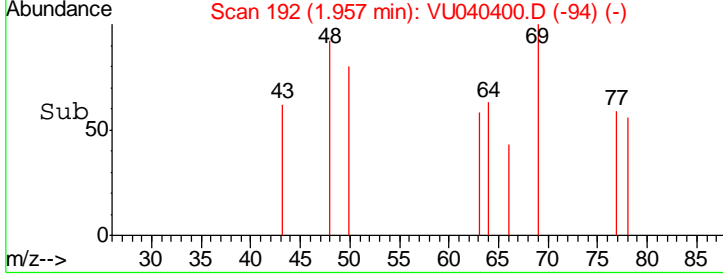
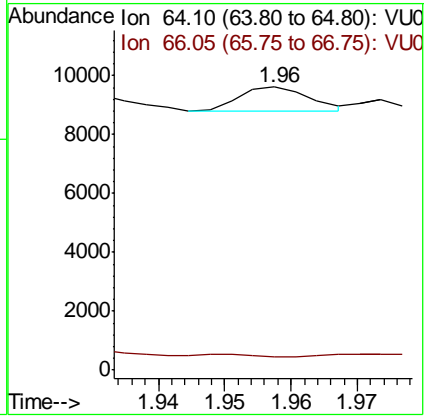
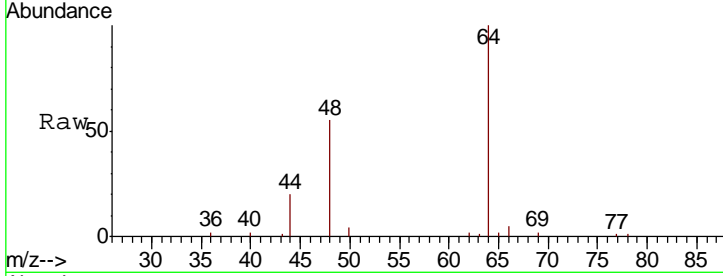




#8  
 Chloroethane  
 Concen: 0.077 ug/L  
 RT: 1.96 min Scan# 192  
 Delta R.T. 0.02 min  
 Lab File: VU040400.D  
 Acq: 30 Sep 2020 15:40

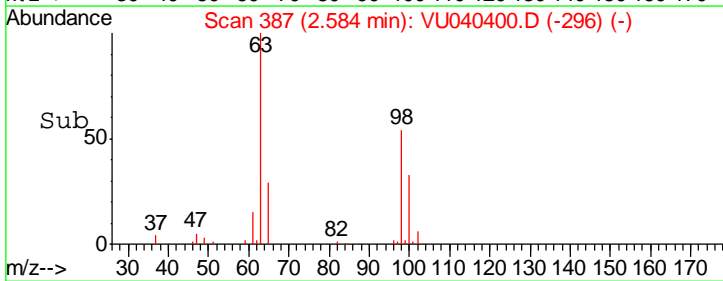
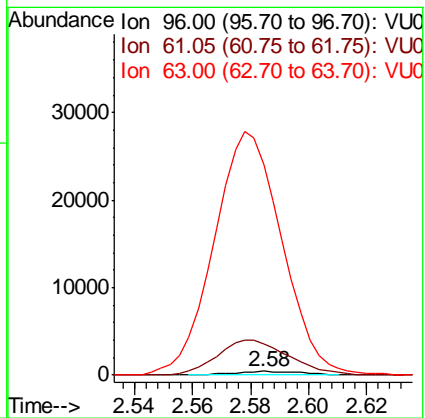
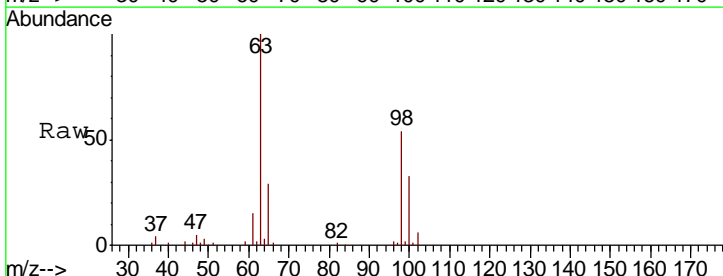
Instrument :  
 MSVOA\_U  
 ClientSampled :  
 BG0F1

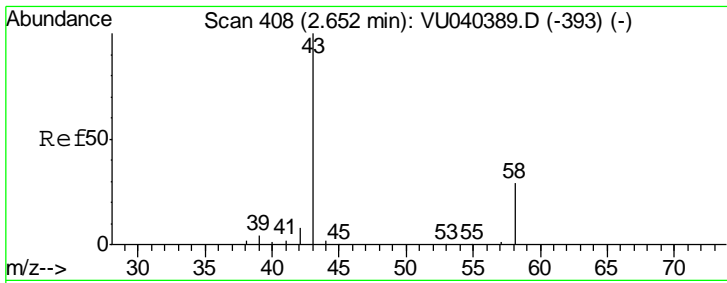
Tgt Ion: 64 Resp: 605  
 Ion Ratio Lower Upper  
 64 100  
 66 4.5 21.3 39.6#



#12  
 1,1-Dichloroethene  
 Concen: 0.066 ug/L  
 RT: 2.58 min Scan# 387  
 Delta R.T. -0.01 min  
 Lab File: VU040400.D  
 Acq: 30 Sep 2020 15:40

Tgt Ion: 96 Resp: 693  
 Ion Ratio Lower Upper  
 96 100  
 61 841.1 128.6 238.8#  
 63 5708.3 67.8 126.0#

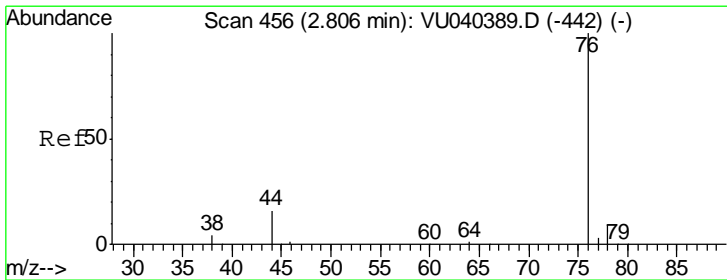
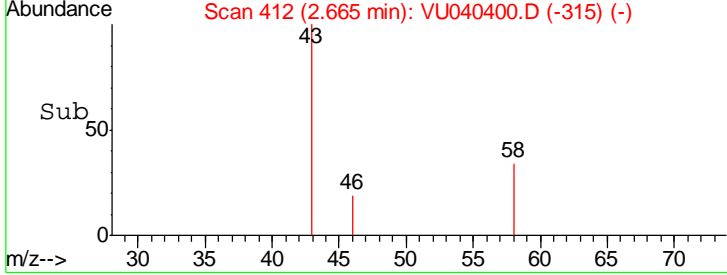
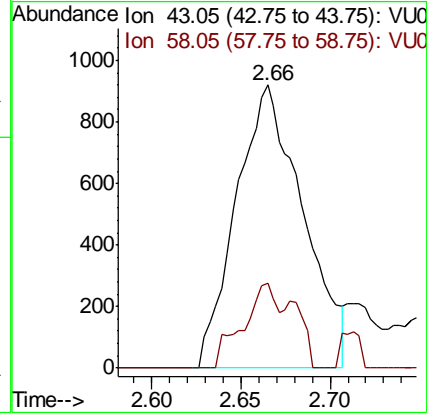
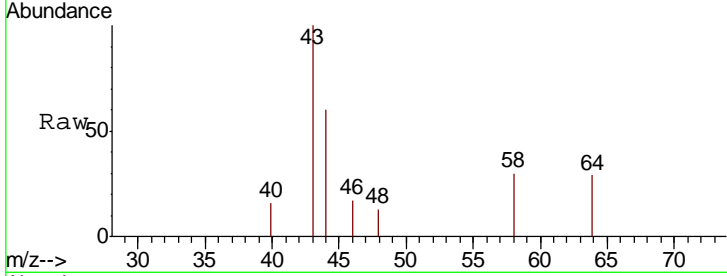




#13  
 Acetone  
 Concen: 0.853 ug/L  
 RT: 2.66 min Scan# 412  
 Delta R.T. 0.01 min  
 Lab File: VU040400.D  
 Acq: 30 Sep 2020 15:40

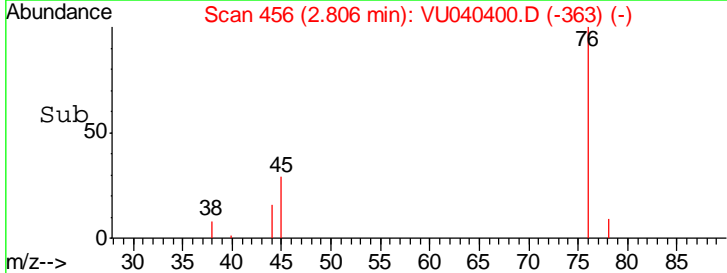
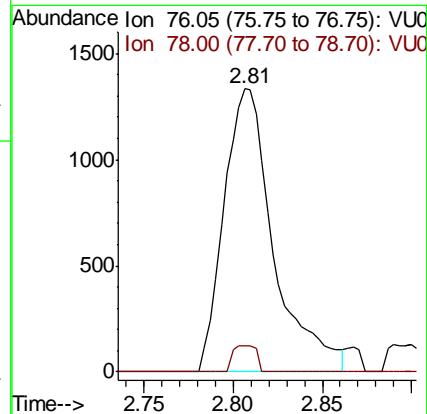
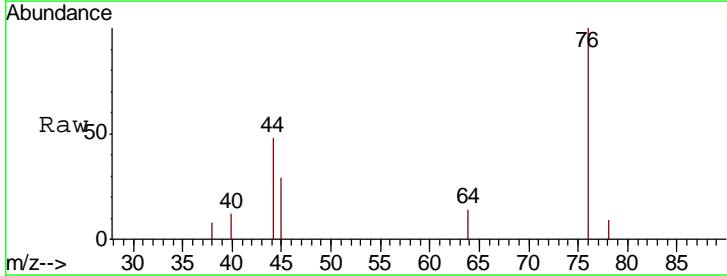
**Instrument :**  
 MSVOA\_U  
**ClientSampled :**  
 BG0F1

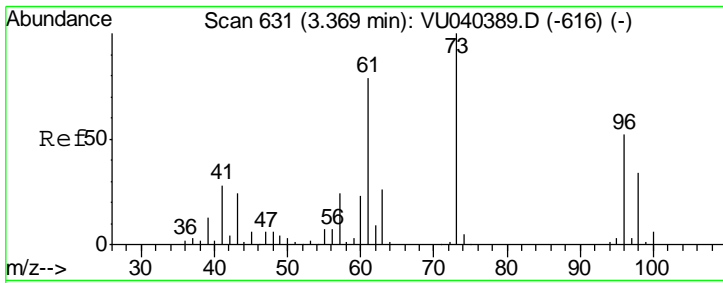
Tgt Ion	Resp	Lower	Upper
43	100		
58	15.3	0.0	61.8



#14  
 Carbon disulfide  
 Concen: 0.078 ug/L  
 RT: 2.81 min Scan# 456  
 Delta R.T. 0.00 min  
 Lab File: VU040400.D  
 Acq: 30 Sep 2020 15:40

Tgt Ion	Resp	Lower	Upper
76	100		
78	9.4	7.2	10.8

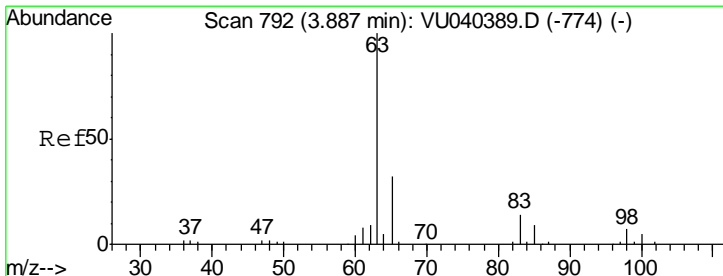
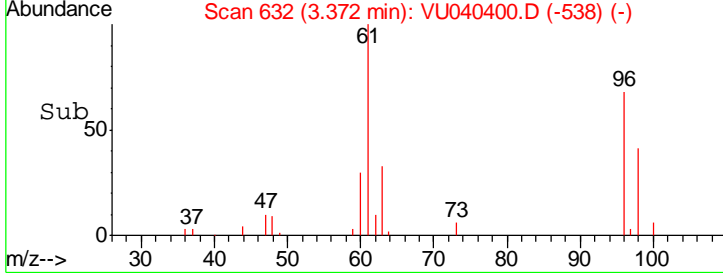
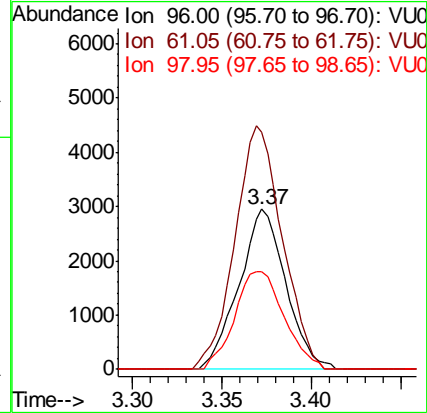
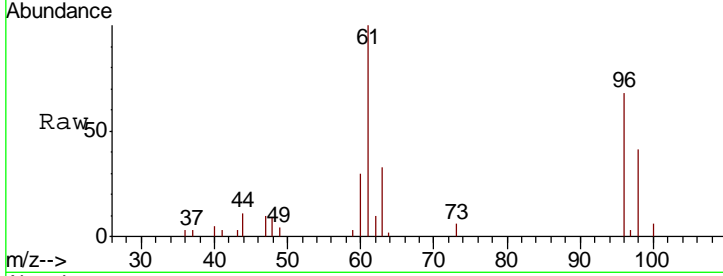




#18  
 trans-1,2-Dichloroethene  
 Concen: 0.502 ug/L  
 RT: 3.37 min Scan# 632  
 Delta R.T. 0.00 min  
 Lab File: VU040400.D  
 Acq: 30 Sep 2020 15:40

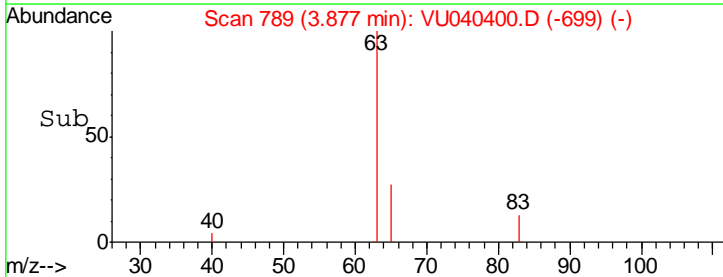
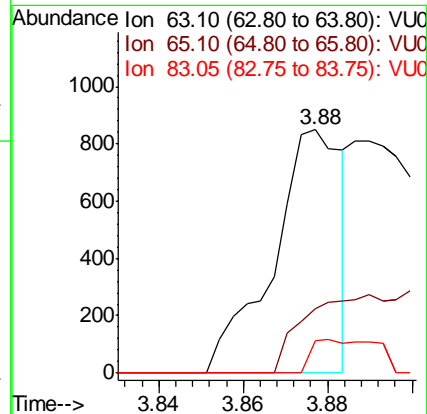
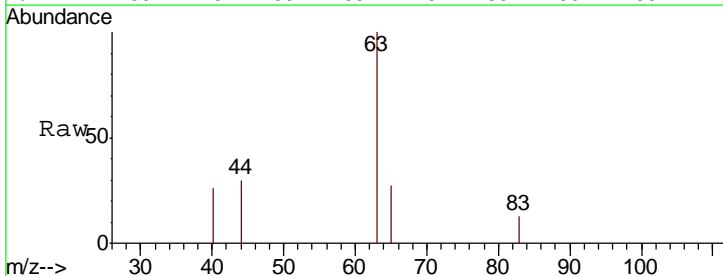
**Instrument :**  
 MSVOA\_U  
**ClientSampled :**  
 BG0F1

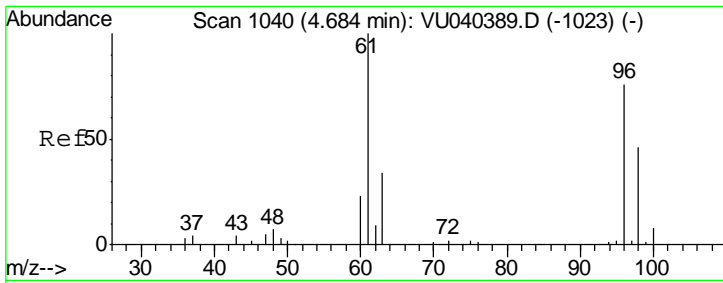
Tgt Ion	Resp	Lower	Upper
96	5411		
96	100		
61	147.9	109.3	203.1
98	61.2	45.8	85.0



#19  
 1,1-Dichloroethane  
 Concen: 0.043 ug/L  
 RT: 3.88 min Scan# 789  
 Delta R.T. -0.01 min  
 Lab File: VU040400.D  
 Acq: 30 Sep 2020 15:40

Tgt Ion	Resp	Lower	Upper
63	961		
63	100		
65	26.6	21.7	40.3
83	13.3	9.1	16.9

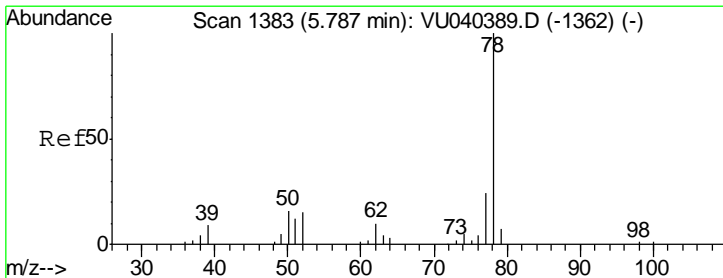
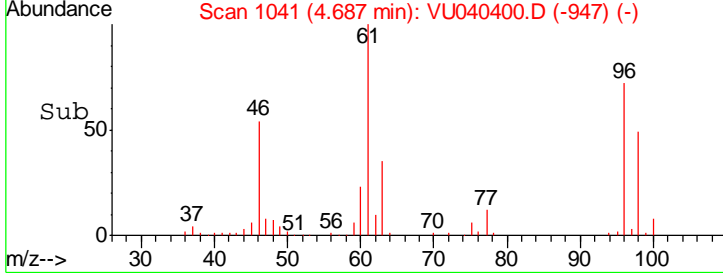
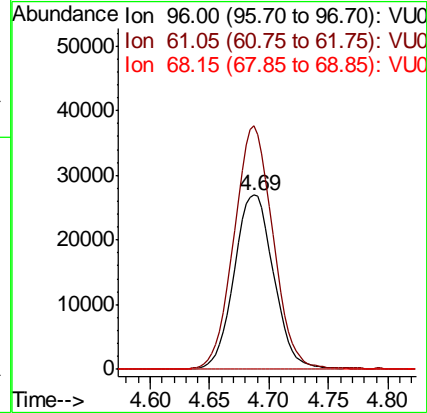
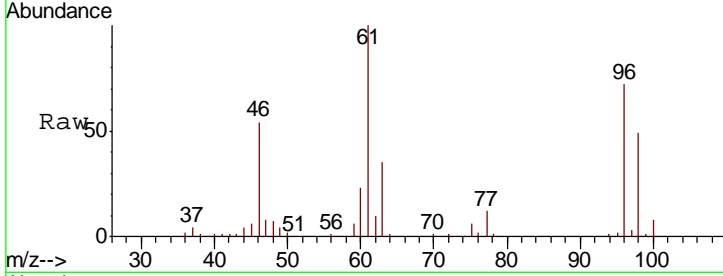




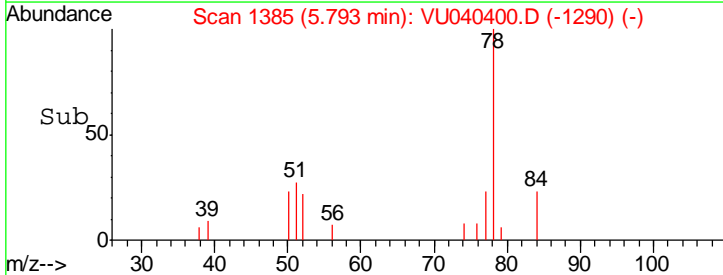
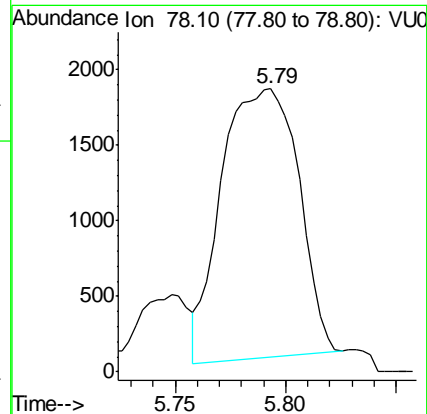
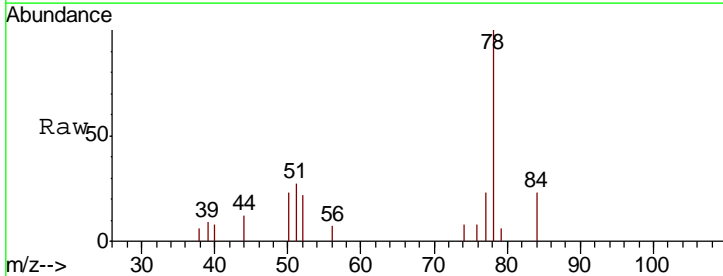
#22  
 cis-1,2-Dichloroethene  
 Concen: 5.204 ug/L  
 RT: 4.69 min Scan# 1041  
 Delta R.T. 0.00 min  
 Lab File: VU040400.D  
 Acq: 30 Sep 2020 15:40

Instrument :  
 MSVOA\_U  
 ClientSampled :  
 BG0F1

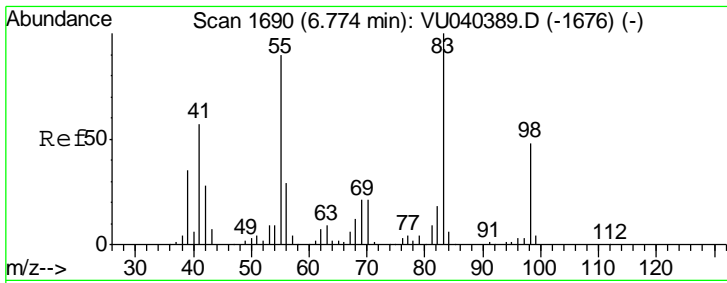
Tgt Ion	Resp	Lower	Upper
96	62093		
61	139.8	99.3	184.5
68	0.0	0.0	0.0



#33  
 Benzene  
 Concen: 0.092 ug/L  
 RT: 5.79 min Scan# 1385  
 Delta R.T. 0.01 min  
 Lab File: VU040400.D  
 Acq: 30 Sep 2020 15:40



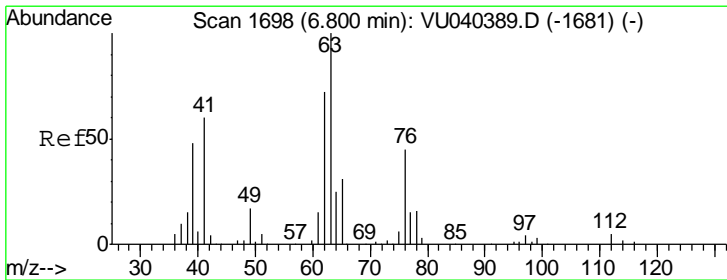
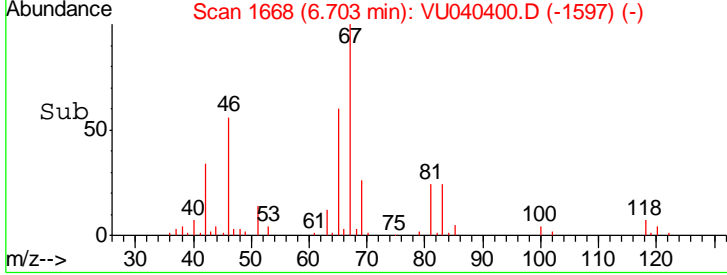
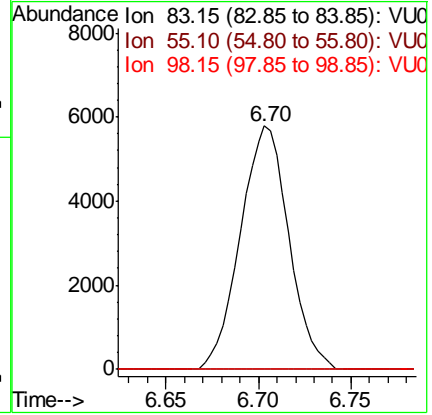
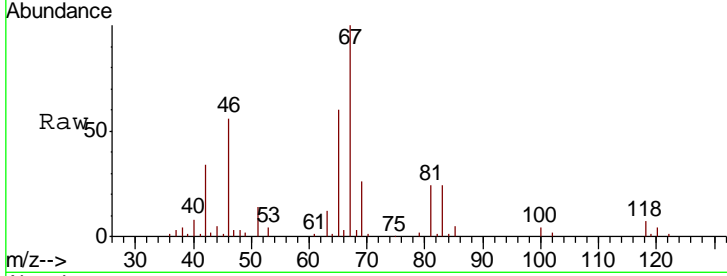




#35  
 Methylcyclohexane  
 Concen: 0.578 ug/L  
 RT: 6.70 min Scan# 1668  
 Delta R.T. -0.07 min  
 Lab File: VU040400.D  
 Acq: 30 Sep 2020 15:40

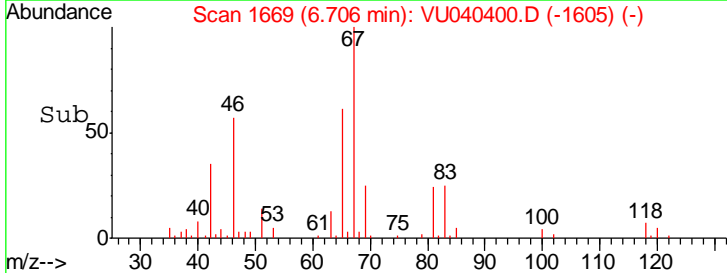
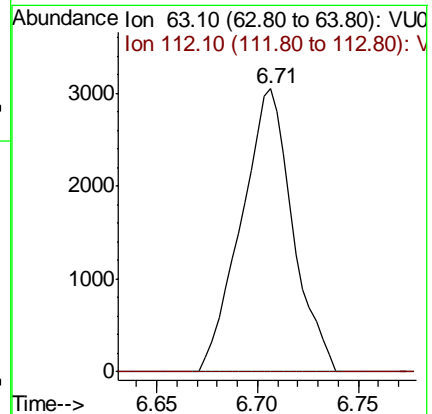
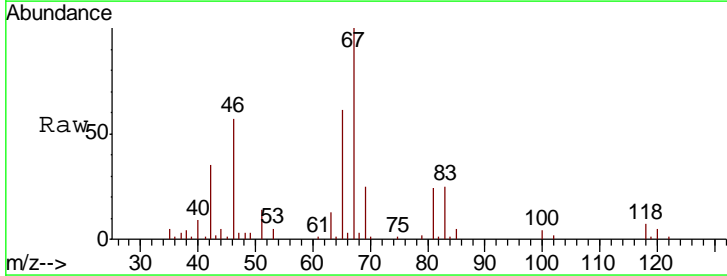
Instrument :  
 MSVOA\_U  
 ClientSampled :  
 BG0F1

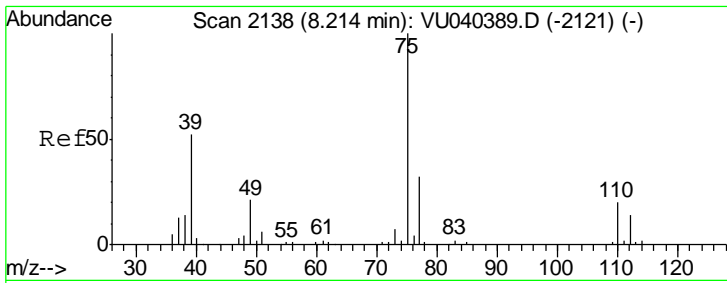
Tgt Ion	Resp	Lower	Upper
83	10523		
55	0.0	71.4	107.2#
98	0.0	38.5	57.7#



#37  
 1,2-Dichloropropane  
 Concen: 0.417 ug/L  
 RT: 6.71 min Scan# 1669  
 Delta R.T. -0.09 min  
 Lab File: VU040400.D  
 Acq: 30 Sep 2020 15:40

Tgt Ion	Resp	Lower	Upper
63	5432		
112	0.0	3.2	4.8#

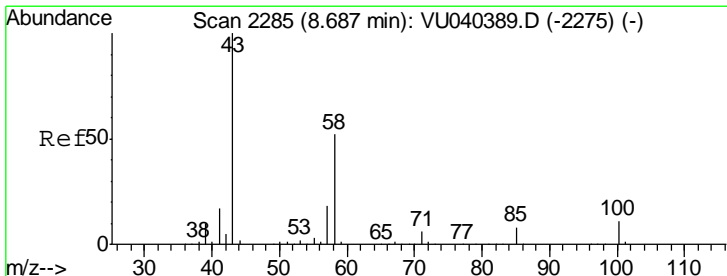
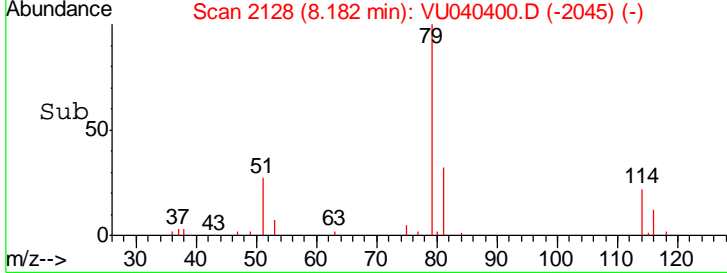
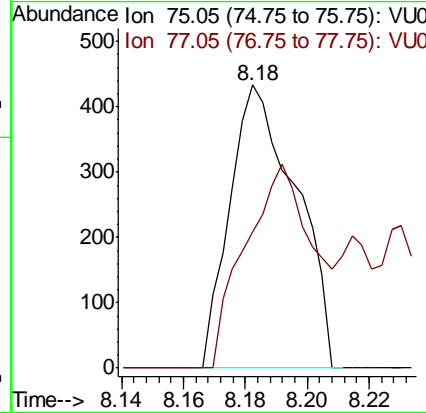
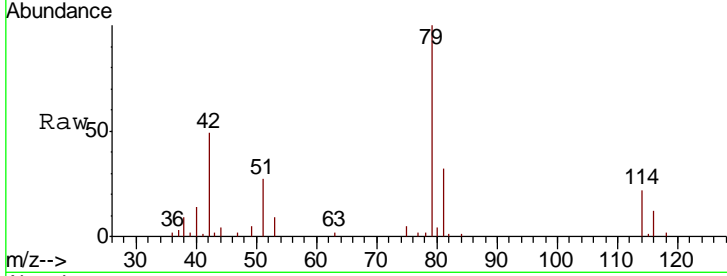




#44  
 trans-1,3-Dichloropropene  
 Concen: 0.040 ug/L  
 RT: 8.18 min Scan# 2128  
 Delta R.T. -0.03 min  
 Lab File: VU040400.D  
 Acq: 30 Sep 2020 15:40

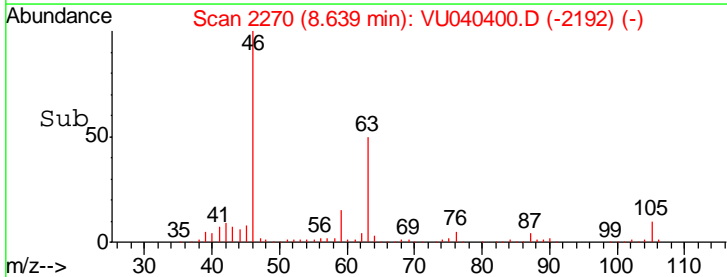
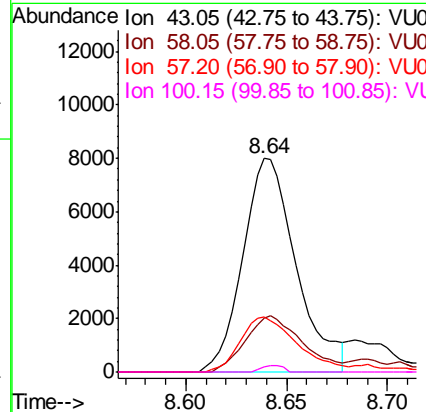
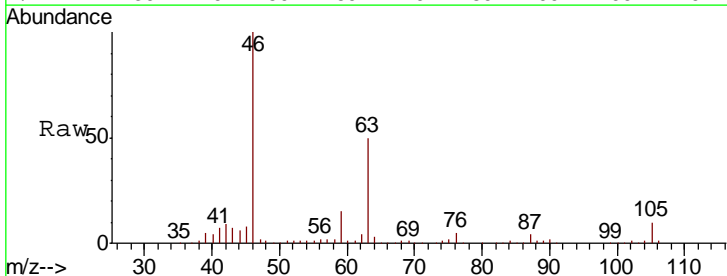
**Instrument :**  
 MSVOA\_U  
**ClientSampled :**  
 BG0F1

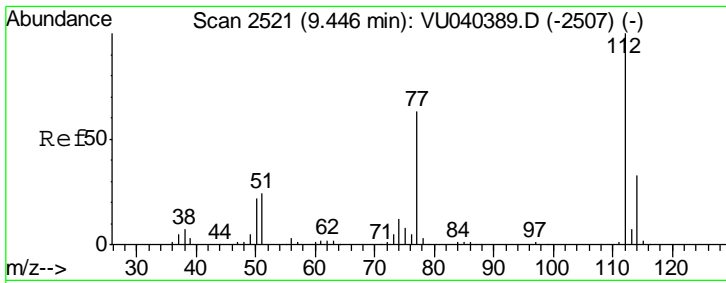
Tgt Ion: 75 Resp: 644  
 Ion Ratio Lower Upper  
 75 100  
 77 48.0 22.3 41.3#



#48  
 2-Hexanone  
 Concen: 1.970 ug/L  
 RT: 8.64 min Scan# 2270  
 Delta R.T. -0.05 min  
 Lab File: VU040400.D  
 Acq: 30 Sep 2020 15:40

Tgt Ion: 43 Resp: 14803  
 Ion Ratio Lower Upper  
 43 100  
 58 28.0 41.0 61.4#  
 57 27.6 14.6 22.0#  
 100 1.2 8.2 12.4#

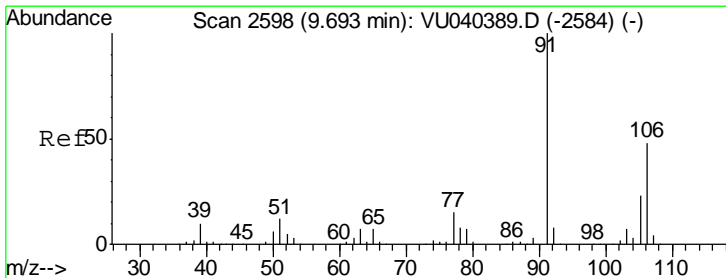
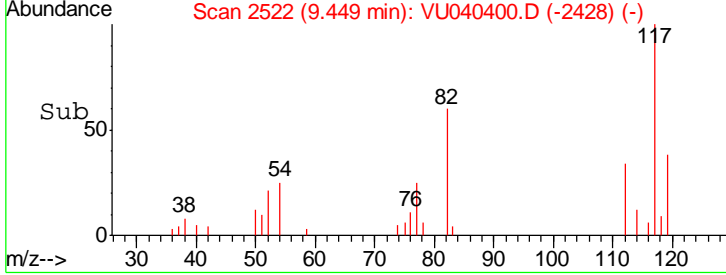
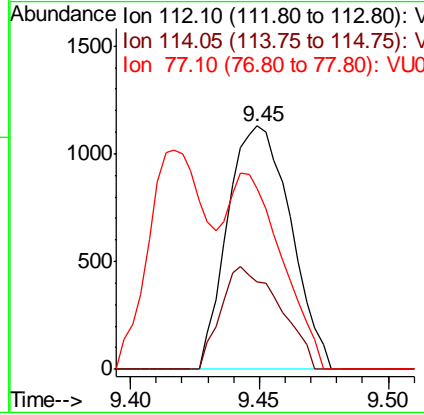
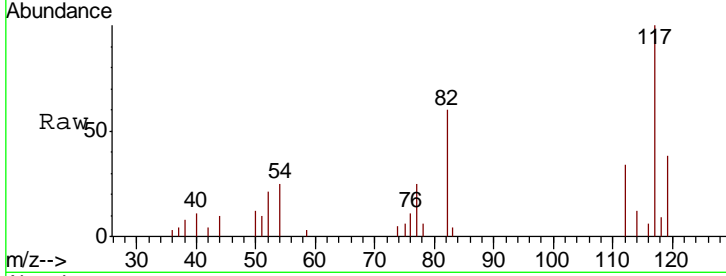




#51  
 Chlorobenzene  
 Concen: 0.062 ug/L  
 RT: 9.45 min Scan# 2522  
 Delta R.T. 0.00 min  
 Lab File: VU040400.D  
 Acq: 30 Sep 2020 15:40

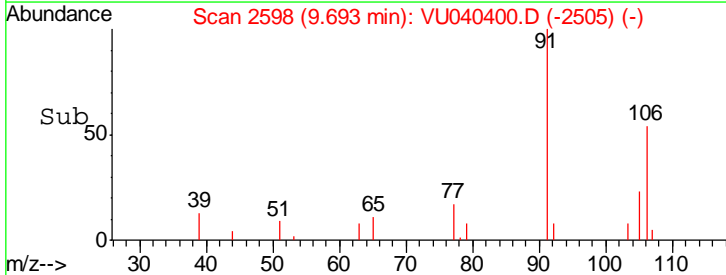
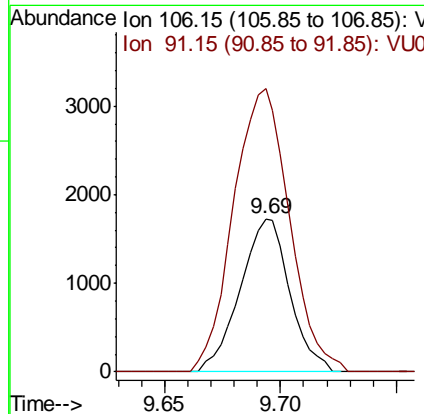
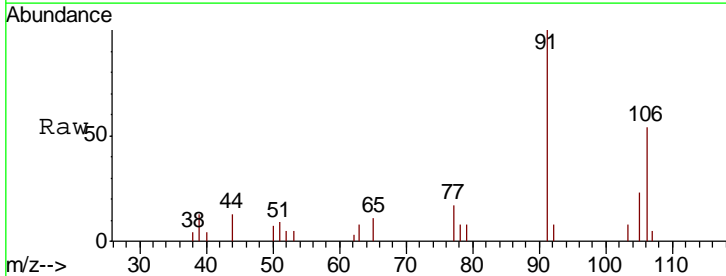
Instrument :  
 MSVOA\_U  
 ClientSampled :  
 BG0F1

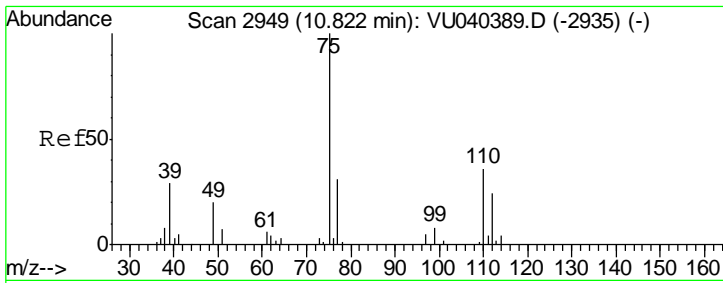
Tgt Ion	Resp	Lower	Upper
112	1917		
114	36.0	22.0	40.8
77	74.3	49.5	74.3#



#53  
 m,p-Xylene  
 Concen: 0.132 ug/L  
 RT: 9.69 min Scan# 2598  
 Delta R.T. 0.00 min  
 Lab File: VU040400.D  
 Acq: 30 Sep 2020 15:40

Tgt Ion	Resp	Lower	Upper
106	2561		
91	184.5	149.0	276.6

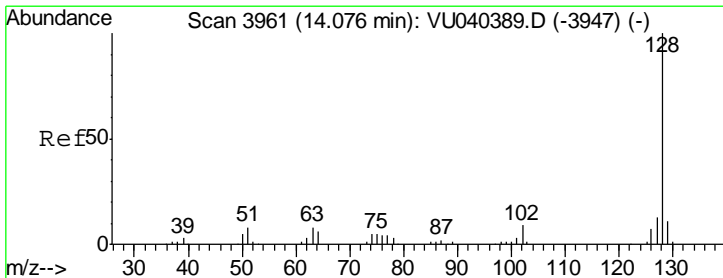
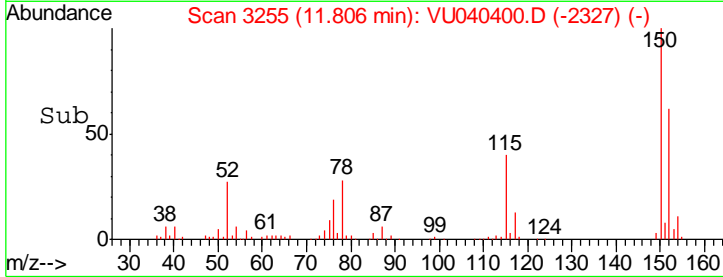
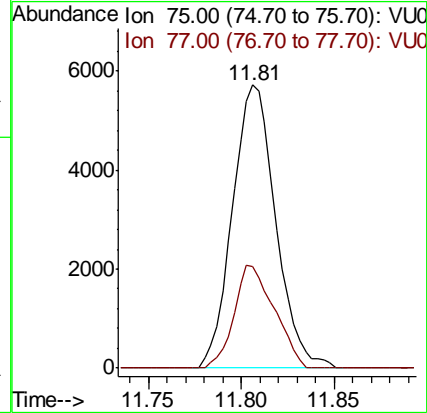
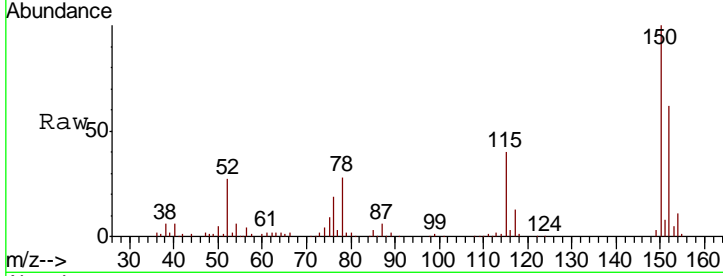




#59  
 1,2,3-Trichloropropane  
 Concen: 0.979 ug/L  
 RT: 11.81 min Scan# 3255  
 Delta R.T. 0.98 min  
 Lab File: VU040400.D  
 Acq: 30 Sep 2020 15:40

Instrument :  
 MSVOA\_U  
 ClientSampled :  
 BG0F1

Tgt Ion	Resp	Lower	Upper
75	9236		
75	100		
77	33.8	25.7	38.5



#69  
 Naphthalene  
 Concen: 0.071 ug/L  
 RT: 14.07 min Scan# 3960  
 Delta R.T. -0.00 min  
 Lab File: VU040400.D  
 Acq: 30 Sep 2020 15:40

Tgt Ion	Resp	Lower	Upper
128	1447		
128	100		
129	0.0	8.2	12.4#
127	10.0	10.2	15.4#

