

Data Path : Z:\VOASRV\HPCHEM1\MSVOA U\DATA\VU100120\
 Data File : VU040419.D
 Acq On : 01 Oct 2020 13:03
 Operator : SY/MD
 Sample : L4188-06
 Misc : 25.0mL/MSVOA U/WATER
 ALS Vial : 10 Sample Multiplier: 1

Instrument :
 MSVOA_U
 ClientSampleId :
 VHBLK01

Quant Time: Oct 02 04:23:02 2020
 Quant Method : Z:\VOASRV\HPCHEM1\MSVOA_U\METHOD\SOMUTR092920WMA.M
 Quant Title : TRACE VOA SOM01.0
 QLast Update : Fri Oct 02 03:13:35 2020
 Response via : Initial Calibration

Internal Standards	R.T.	QIon	Response	Conc	Units	Dev(Min)
1) 1,4-Difluorobenzene	6.26	114	122904	5.00	ug/L	0.00
28) Chlorobenzene-d5	9.42	117	128082	5.00	ug/L	0.00
60) 1,4-Dichlorobenzene-d4	11.81	152	54709	5.00	ug/L	0.00

System Monitoring Compounds

4) Vinyl Chloride-d3	1.60	65	28187	4.63	ug/L	0.00
Spiked Amount	5.000	Range	40 - 130	Recovery	=	92.60%
7) Chloroethane-d5	1.92	69	29440	5.53	ug/L	0.00
Spiked Amount	5.000	Range	65 - 130	Recovery	=	110.60%
11) 1,1-Dichloroethene-d2	2.58	63	48410	3.31	ug/L	0.00
Spiked Amount	5.000	Range	60 - 125	Recovery	=	66.20%
20) 2-Butanone-d5	4.66	46	181438	60.03	ug/L	0.00
Spiked Amount	50.000	Range	40 - 130	Recovery	=	120.06%
24) Chloroform-d	5.08	84	77000	5.32	ug/L	0.00
Spiked Amount	5.000	Range	70 - 125	Recovery	=	106.40%
26) 1,2-Dichloroethane-d4	5.72	65	49392	5.60	ug/L	0.00
Spiked Amount	5.000	Range	70 - 130	Recovery	=	112.00%
32) Benzene-d6	5.74	84	134749	5.23	ug/L	0.00
Spiked Amount	5.000	Range	70 - 125	Recovery	=	104.60%
36) 1,2-Dichloropropane-d6	6.70	67	50415	5.35	ug/L	0.00
Spiked Amount	5.000	Range	60 - 140	Recovery	=	107.00%
41) Toluene-d8	7.91	98	103224	4.61	ug/L	0.00
Spiked Amount	5.000	Range	70 - 130	Recovery	=	92.20%
43) trans-1,3-Dichloropropene-	8.19	79	19036	4.95	ug/L	0.00
Spiked Amount	5.000	Range	55 - 130	Recovery	=	99.00%
46) 2-Hexanone-d5	8.64	63	123855	54.78	ug/L	0.00
Spiked Amount	50.000	Range	45 - 130	Recovery	=	109.56%
57) 1,1,2,2-Tetrachloroethane-	10.75	84	49054	5.35	ug/L	0.00
Spiked Amount	5.000	Range	65 - 120	Recovery	=	107.00%
64) 1,2-Dichlorobenzene-d4	12.19	152	50667	6.11	ug/L	0.00
Spiked Amount	5.000	Range	80 - 120	Recovery	=	122.20%#

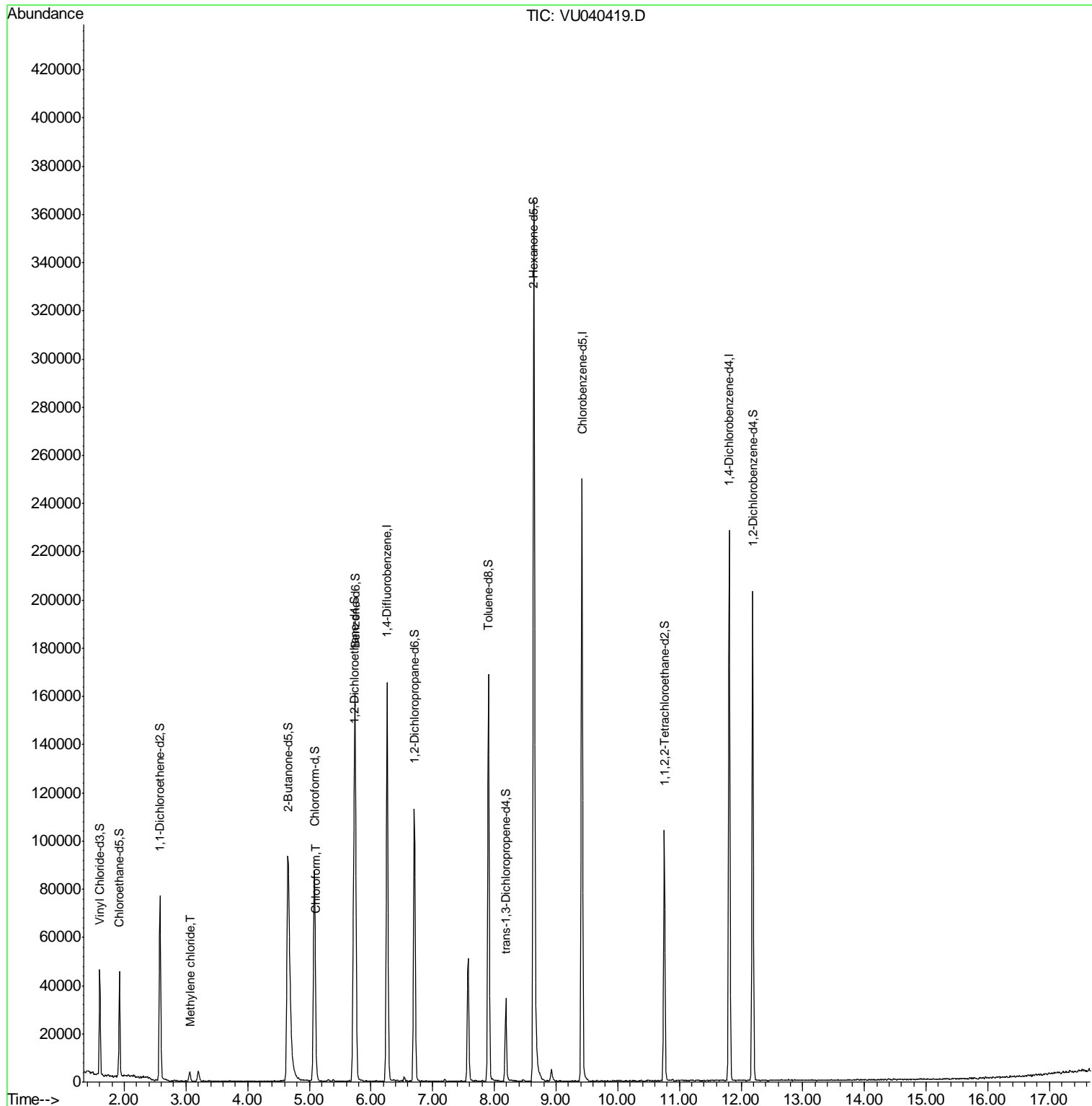
Target Compounds					Ovalue
16) Methylene chloride	3.07	84	1862	0.158	ug/L 85
25) Chloroform	5.11	83	4446	0.219	ug/L 96

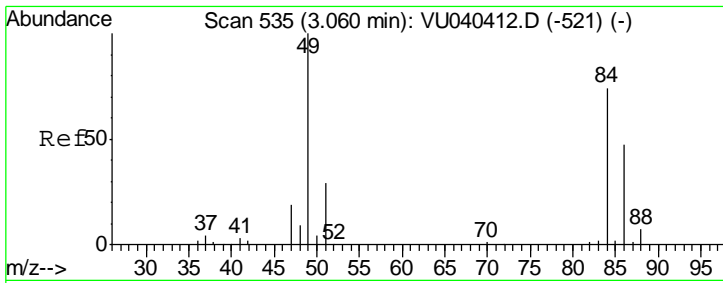
(#) = qualifier out of range (m) = manual integration (+) = signals summed

Data Path : Z:\VOASRV\HPCHEM1\MSVOA U\DATA\VU100120\
 Data File : VU040419.D
 Acq On : 01 Oct 2020 13:03
 Operator : SY/MD
 Sample : L4188-06
 Misc : 25.0mL/MSVOA U/WATER
 ALS Vial : 10 Sample Multiplier: 1

Instrument :
 MSVOA_U
 ClientSampled :
 VHBLK01

Quant Time: Oct 02 04:23:02 2020
 Quant Method : Z:\VOASRV\HPCHEM1\MSVOA_U\METHOD\SOMUTR092920WMA.M
 Quant Title : TRACE VOA SOM01.0
 QLast Update : Fri Oct 02 03:13:35 2020
 Response via : Initial Calibration

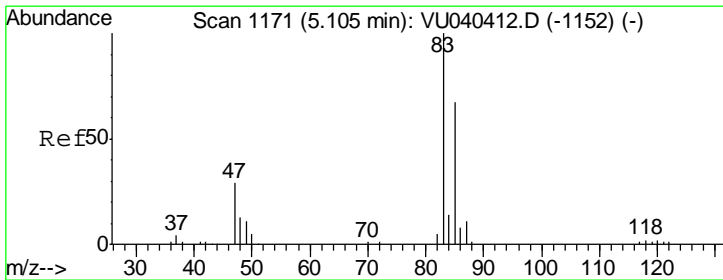
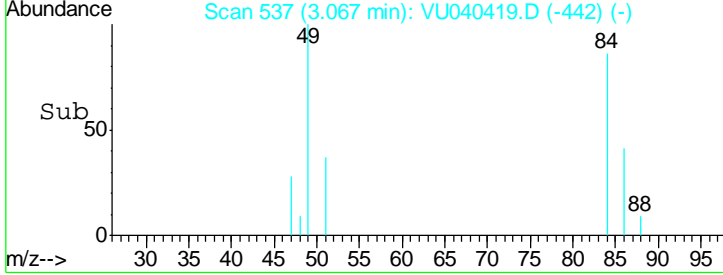
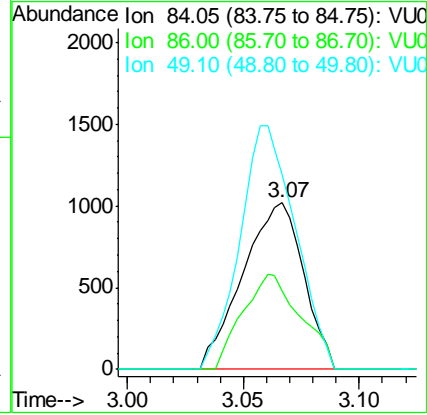
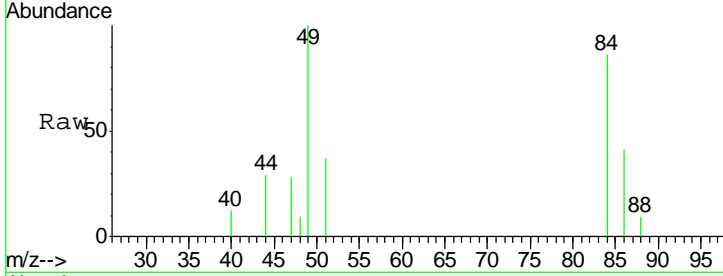




#16
 Methylene chloride
 Concen: 0.158 ug/L
 RT: 3.07 min Scan# 537
 Delta R.T. 0.01 min
 Lab File: VU040419.D
 Acq: 01 Oct 2020 13:03

Instrument :
 MSVOA_U
 ClientSampled :
 VHBLK01

Tgt Ion	Resp	Lower	Upper
84	100		
86	47.4	44.4	82.5
49	116.9	92.2	171.2



#25
 Chloroform
 Concen: 0.219 ug/L
 RT: 5.11 min Scan# 1172
 Delta R.T. 0.00 min
 Lab File: VU040419.D
 Acq: 01 Oct 2020 13:03

Tgt Ion	Resp	Lower	Upper
83	100		
85	66.5	44.6	82.8

