

Data Path : Z:\VOASRV\HPCHEM1\MSVOA U\DATA\VU100218\
 Data File : VU027336.D
 Acq On : 02 Oct 2018 09:45
 Operator : MD/SY
 Sample : VU1002WBL01
 Misc : 5.0mL/MSVOA U/WATER
 ALS Vial : 3 Sample Multiplier: 1

Instrument :
 MSVOA_U
 ClientSampleId :
 VU1002WBL01

Integration Parameters: RTEINT.P
 Integrator: RTE
 Smoothing : ON Filtering: 5
 Sampling : 1 Min Area: 3 % of largest Peak
 Start Thrs: 0.2 Max Peaks: 100
 Stop Thrs : 0 Peak Location: TOP

If leading or trailing edge < 100 prefer < Baseline drop else tangent >
 Peak separation: 5

Method : Z:\VOASRV\HPCHEM1\MSVOA_U\METHOD\82U100118W.M
 Title : SW846 8260

Signal : TIC

peak #	R.T. min	first scan	max scan	last scan	PK TY	peak height	corr. area	corr. % max.	% of total
1	1.575	120	125	132	rVB3	6309	8277	1.12%	0.241%
2	4.884	1137	1154	1170	rBV3	104559	235180	31.90%	6.852%
3	4.984	1171	1185	1209	rVB	143134	310244	42.09%	9.039%
4	5.308	1271	1286	1308	rBV	132565	278365	37.76%	8.110%
5	5.887	1451	1466	1491	rBV	221624	439794	59.66%	12.813%
6	7.565	1975	1988	2028	rBV	416474	737167	100.00%	21.477%
7	9.090	2448	2462	2486	rBV	314479	524959	71.21%	15.294%
8	10.308	2828	2841	2867	rBV	267749	423829	57.49%	12.348%
9	11.485	3195	3207	3231	rBV	305445	474533	64.37%	13.825%

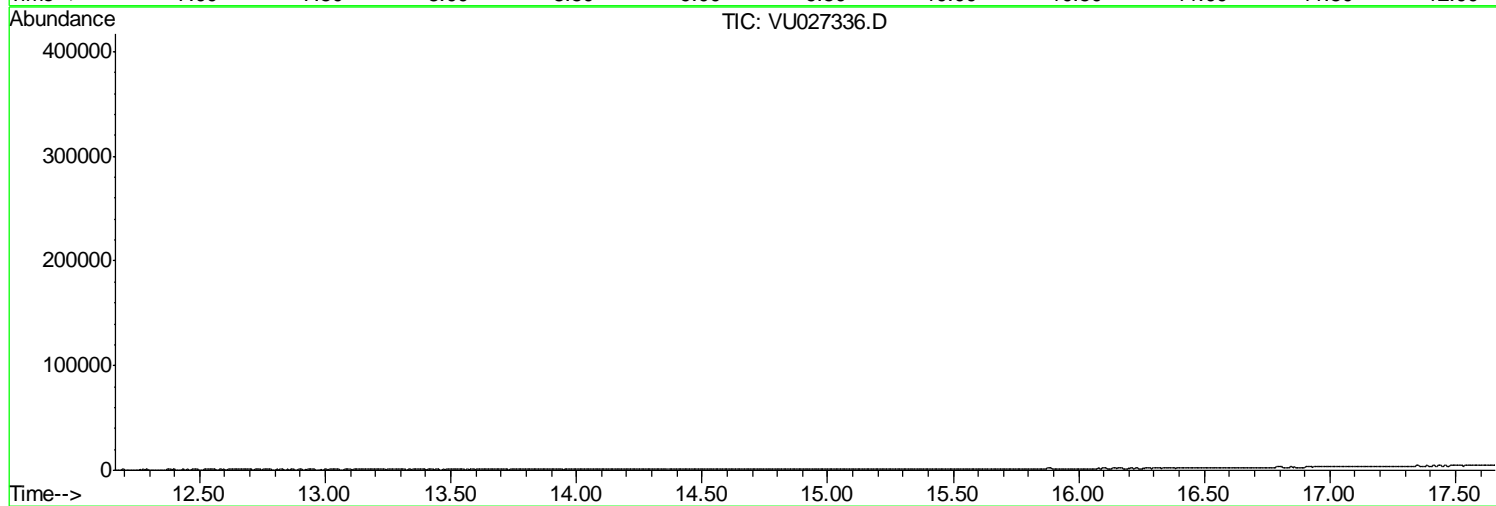
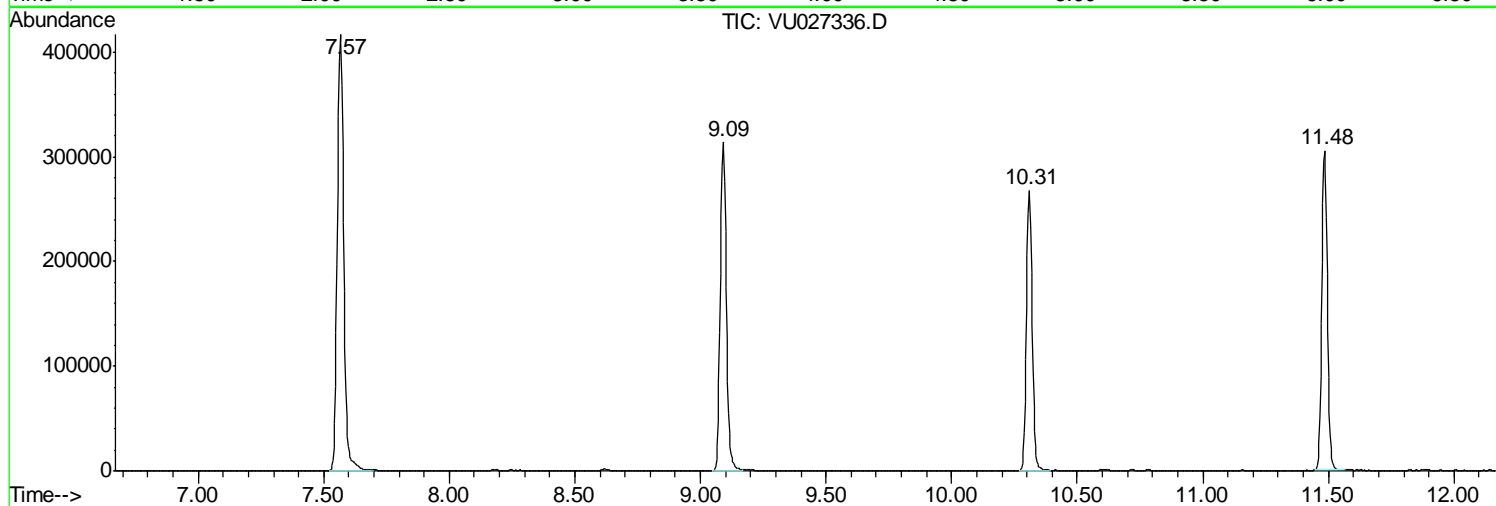
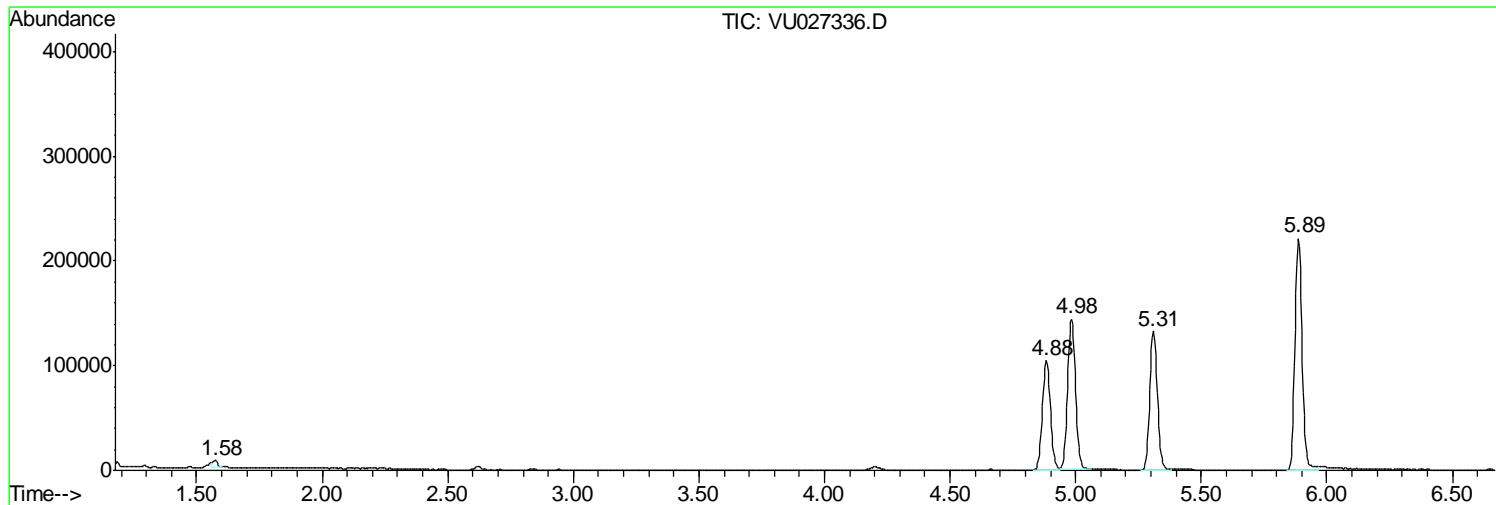
Sum of corrected areas: 3432348

Data Path : Z:\VOASRV\HPCHEM1\MSVOA U\DATA\VU100218\
Data File : VU027336.D
Acq On : 02 Oct 2018 09:45
Operator : MD/SY
Sample : VU1002WBL01
Misc : 5.0mL/MSVOA U/WATER
ALS Vial : 3 Sample Multiplier: 1

Instrument :
MSVOA_U
ClientSampleId :
VU1002WBL01

Quant Method : Z:\VOASRV\HPCHEM1\MSVOA_U\METHOD\82U100118W.M
Quant Title : SW846 8260

TIC Library : C:\DATABASE\NIST11.L
TIC Integration Parameters: LSCINT.P



Data Path : Z:\VOASRV\HPCHEM1\MSVOA_U\DATA\VU100218\
Data File : VU027336.D
Acq On : 02 Oct 2018 09:45
Operator : MD/SY
Sample : VU1002WBL01
Misc : 5.0mL/MSVOA_U/WATER
ALS Vial : 3 Sample Multiplier: 1

Instrument :
MSVOA_U
ClientSampleId :
VU1002WBL01

Quant Method : Z:\VOASRV\HPCHEM1\MSVOA_U\METHOD\82U100118W.M
Quant Title : SW846 8260

TIC Library : C:\DATABASE\NIST11.L
TIC Integration Parameters: LSCINT.P

No Library Search Compounds Detected

Data Path : Z:\VOASRV\HPCHEM1\MSVOA_U\DATA\VU100218\
Data File : VU027336.D
Acq On : 02 Oct 2018 09:45
Operator : MD/SY
Sample : VU1002WBL01
Misc : 5.0mL/MSVOA_U/WATER
ALS Vial : 3 Sample Multiplier: 1

Instrument :
MSVOA_U
ClientSampleId :
VU1002WBL01

Quant Method : Z:\VOASRV\HPCHEM1\MSVOA_U\METHOD\82U100118W.M
Quant Title : SW846 8260

TIC Library : C:\DATABASE\NIST11.L
TIC Integration Parameters: LSCINT.P

TIC Top Hit name	RT	EstConc	Units	Response	--Internal Standard--			
					#	RT	Resp	Conc
