

Data File : VU034918.D  
 Acq On : 03 Oct 2019 16:51  
 Operator : JC/SP  
 Sample : K5058-14  
 Misc : 5.0mL/MSVOA\_U/WATER  
 ALS Vial : 10 Sample Multiplier: 1

Instrument :  
 MSVOA\_U  
 ClientSampleId :  
 DBAC4

Quant Time: Oct 04 06:43:51 2019  
 Quant Method : Z:\VOASRV\HPCHEM1\MSVOA\_U\METHOD\SOMULM100319WMA.M  
 Quant Title : VOC Analysis  
 QLast Update : Fri Oct 04 06:39:51 2019  
 Response via : Initial Calibration

Internal Standards	R.T.	QIon	Response	Conc	Units	Dev(Min)
1) 1,4-Difluorobenzene	5.86	114	388476	50.00	ug/L	0.00
28) Chlorobenzene-d5	9.07	117	376664	50.00	ug/L	0.00
60) 1,4-Dichlorobenzene-d4	11.46	152	163819	50.00	ug/L	0.00

System Monitoring Compounds

4) Vinyl Chloride-d3	1.39	65	173991	55.72	ug/L	0.00
Spiked Amount	50.000	Range	60 - 135	Recovery	=	111.44%
7) Chloroethane-d5	1.66	69	133867	56.88	ug/L	-0.02
Spiked Amount	50.000	Range	70 - 130	Recovery	=	113.76%
11) 1,1-Dichloroethene-d2	2.25	63	321651	58.31	ug/L	0.00
Spiked Amount	50.000	Range	60 - 125	Recovery	=	116.62%
21) 2-Butanone-d5	4.15	46	258402	112.34	ug/L	0.00
Spiked Amount	100.000	Range	40 - 130	Recovery	=	112.34%
24) Chloroform-d	4.62	84	288472	56.83	ug/L	0.00
Spiked Amount	50.000	Range	70 - 125	Recovery	=	113.66%
26) 1,2-Dichloroethane-d4	5.28	65	198177	57.49	ug/L	0.00
Spiked Amount	50.000	Range	70 - 125	Recovery	=	114.98%
32) Benzene-d6	5.31	84	614529	58.01	ug/L	0.00
Spiked Amount	50.000	Range	70 - 125	Recovery	=	116.02%
36) 1,2-Dichloropropane-d6	6.31	67	201414	57.61	ug/L	0.00
Spiked Amount	50.000	Range	70 - 120	Recovery	=	115.22%
41) Toluene-d8	7.54	98	576362	58.01	ug/L	0.00
Spiked Amount	50.000	Range	80 - 120	Recovery	=	116.02%
43) trans-1,3-Dichloropropene-	7.83	79	94517	60.36	ug/L	0.00
Spiked Amount	50.000	Range	60 - 125	Recovery	=	120.72%
47) 2-Hexanone-d5	8.29	63	197930	119.38	ug/L	0.00
Spiked Amount	100.000	Range	45 - 130	Recovery	=	119.38%
57) 1,1,2,2-Tetrachloroethane-	10.41	84	293452	59.10	ug/L	0.00
Spiked Amount	50.000	Range	65 - 120	Recovery	=	118.20%
64) 1,2-Dichlorobenzene-d4	11.84	152	198702	59.07	ug/L	0.00
Spiked Amount	50.000	Range	80 - 120	Recovery	=	118.14%

Target Compounds

Target Compounds	R.T.	QIon	Response	Conc	Units	Qvalue
2) Dichlorodifluoromethane	1.20	85	79279	23.898	ug/L	99
3) Chloromethane	1.32	50	83670	22.616	ug/L	100
5) Vinyl chloride	1.40	62	174572	49.918	ug/L	99
6) Bromomethane	1.60	94	37902	18.622	ug/L	97
8) Chloroethane	1.68	64	53051	25.879	ug/L	98
9) Trichlorofluoromethane	1.87	101	176910	42.929	ug/L	99
10) 1,1,2-Trichloro-1,2,2-trif	2.27	101	54309	23.355	ug/L	97
12) 1,1-Dichloroethene	2.26	96	147906	66.255	ug/L	99
13) Acetone	2.31	43	3144	1.444	ug/L	93
16) Methylene chloride	2.68	84	123447	43.607	ug/L	98
17) trans-1,2-Dichloroethene	2.96	96	52803	21.143	ug/L	97
19) 1,1-Dichloroethane	3.42	63	338748	67.051	ug/L	99
20) cis-1,2-Dichloroethene	4.20	96	122370	43.527	ug/L	97
23) Bromochloromethane	4.52	128	61024	43.463	ug/L	95
25) Chloroform	4.64	83	319697	62.212	ug/L	97
27) 1,2-Dichloroethane	5.38	62	297781	72.818	ug/L	99
30) 1,1,1-Trichloroethane	4.89	97	88052	21.562	ug/L	98

Data File : VU034918.D  
Acq On : 03 Oct 2019 16:51  
Operator : JC/SP  
Sample : K5058-14  
Misc : 5.0mL/MSVOA\_U/WATER  
ALS Vial : 10 Sample Multiplier: 1

Instrument :  
MSVOA\_U  
ClientSampleId :  
DBAC4

Quant Time: Oct 04 06:43:51 2019  
Quant Method : Z:\VOASRV\HPCHEM1\MSVOA\_U\METHOD\SOMULM100319WMA.M  
Quant Title : VOC Analysis  
QLast Update : Fri Oct 04 06:39:51 2019  
Response via : Initial Calibration

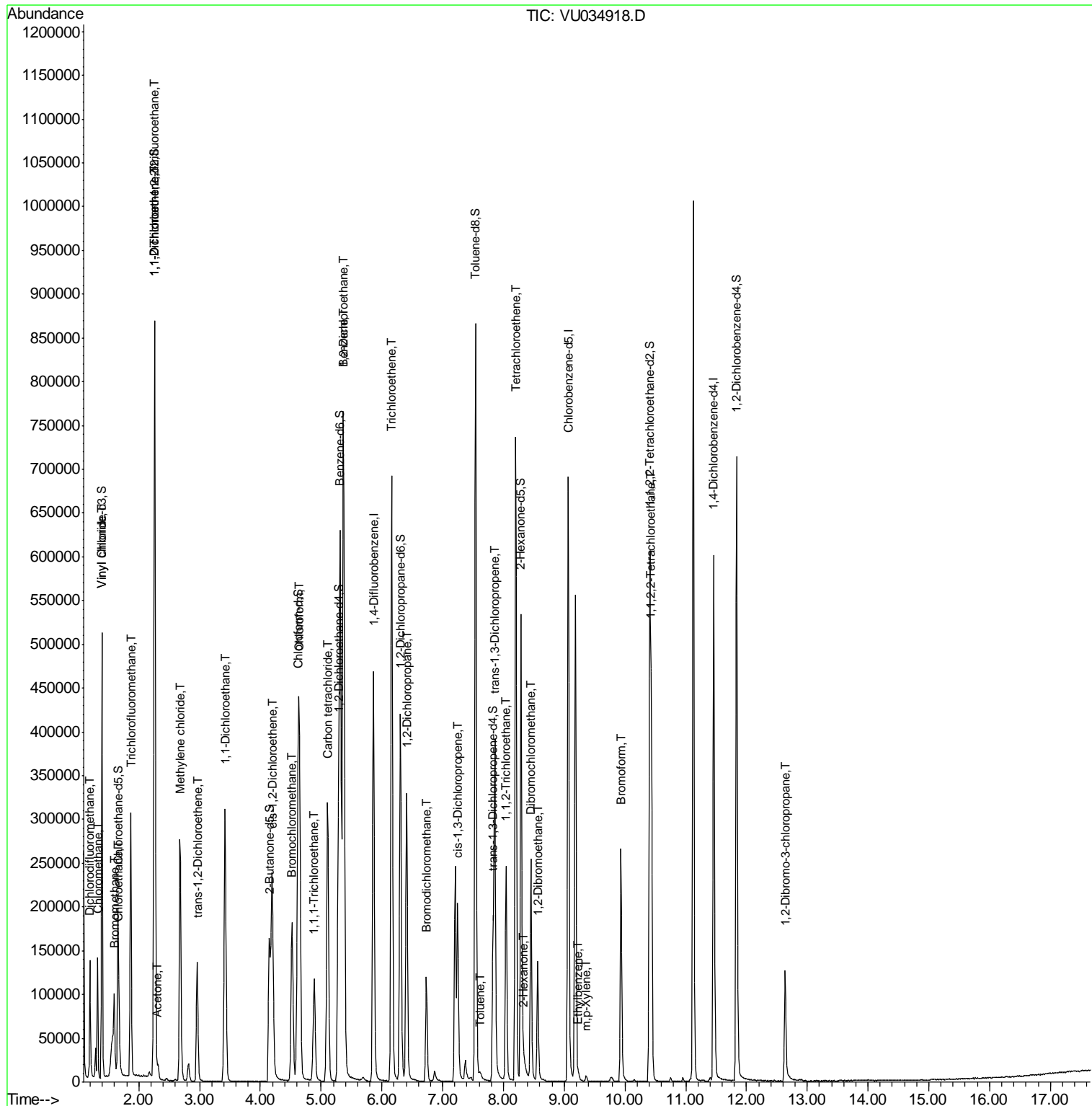
Internal Standards	R.T.	QIon	Response	Conc	Units	Dev(Min)
31) Carbon tetrachloride	5.11	117	226788	63.714	ug/L	100
33) Benzene	5.36	78	525003	47.720	ug/L	100
34) Trichloroethene	6.16	95	237643	85.720	ug/L	98
37) 1,2-Dichloropropane	6.41	63	129962	42.384	ug/L	100
38) Bromodichloromethane	6.73	83	78107	20.984	ug/L	97
39) cis-1,3-Dichloropropene	7.25	75	120578	25.954	ug/L	98
42) Toluene	7.62	91	4790	0.405	ug/L	97
44) trans-1,3-Dichloropropene	7.86	75	219518	53.906	ug/L	99
45) 1,1,2-Trichloroethane	8.04	97	75156	27.875	ug/L	97
46) Tetrachloroethene	8.21	164	164745	74.910	ug/L	99
48) 2-Hexanone	8.34	43	5504	1.521	ug/L #	90
49) Dibromochloromethane	8.45	129	126210	43.237	ug/L	99
50) 1,2-Dibromoethane	8.57	107	92868	32.045	ug/L	96
52) Ethylbenzene	9.23	91	5095	0.388	ug/L	97
53) m,p-Xylene	9.36	106	1937	0.398	ug/L	95
58) 1,1,2,2-Tetrachloroethane	10.43	83	210857	42.860	ug/L	99
61) Bromoform	9.94	173	123066	61.929	ug/L	100
66) 1,2-Dibromo-3-chloropropan	12.64	75	36869	41.312	ug/L	99

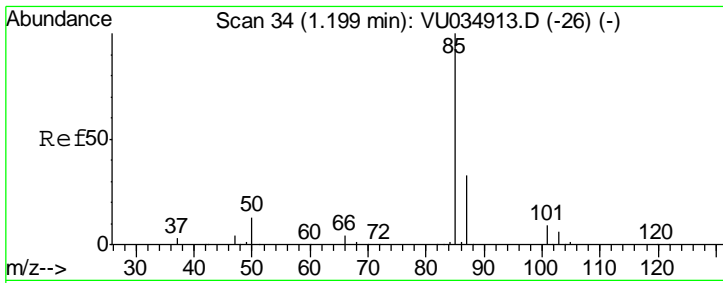
(#) = qualifier out of range (m) = manual integration (+) = signals summed

Data File : VU034918.D  
Acq On : 03 Oct 2019 16:51  
Operator : JC/SP  
Sample : K5058-14  
Misc : 5.0mL/MSVOA\_U/WATER  
ALS Vial : 10 Sample Multiplier: 1

Instrument :  
MSVOA\_U  
Client Sampled :  
DBAC4

Quant Time: Oct 04 06:43:51 2019  
Quant Method : Z:\VOASRV\HPCHEM1\MSVOA\_U\METHOD\SOMULM100319WMA.M  
Quant Title : VOC Analysis  
QLast Update : Fri Oct 04 06:39:51 2019  
Response via : Initial Calibration

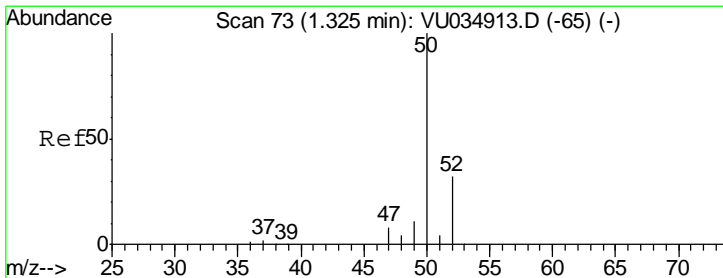
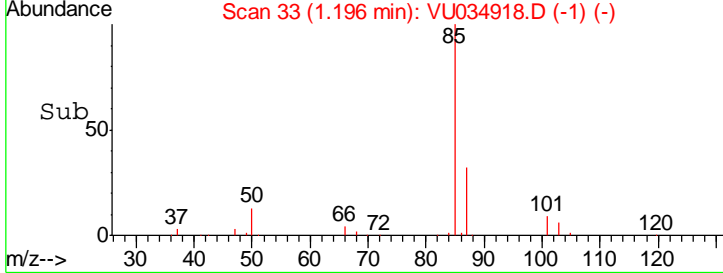
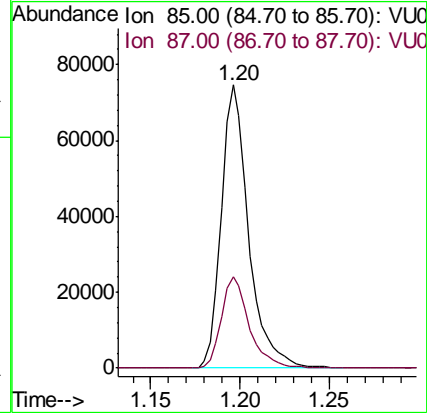
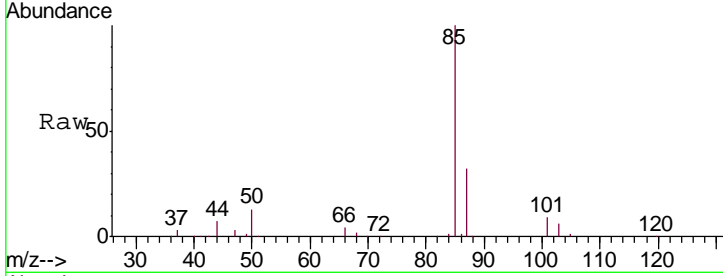




#2  
 Dichlorodifluoromethane  
 Concen: 23.898 ug/L  
 RT: 1.20 min Scan# 33  
 Delta R.T. -0.00 min  
 Lab File: VU034918.D  
 Acq: 03 Oct 2019 16:51

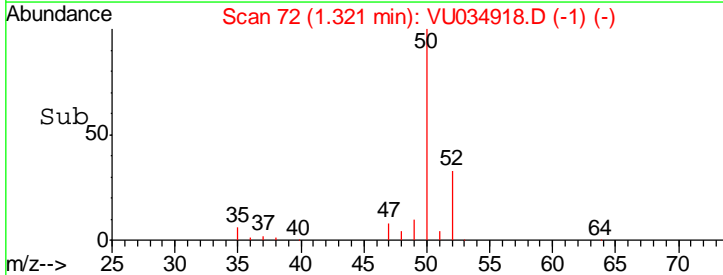
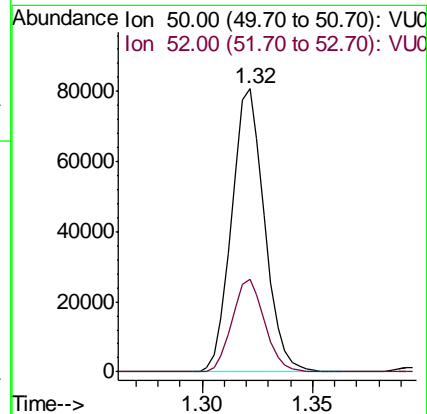
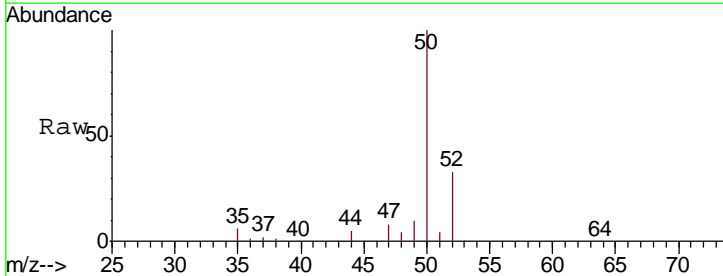
Instrument :  
 MSVOA\_U  
 ClientSampled :  
 DBAC4

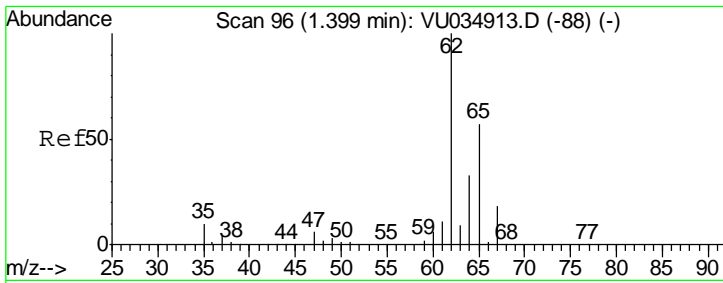
Tgt Ion: 85 Resp: 79279  
 Ion Ratio Lower Upper  
 85 100  
 87 32.9 25.9 38.9



#3  
 Chloromethane  
 Concen: 22.616 ug/L  
 RT: 1.32 min Scan# 72  
 Delta R.T. -0.00 min  
 Lab File: VU034918.D  
 Acq: 03 Oct 2019 16:51

Tgt Ion: 50 Resp: 83670  
 Ion Ratio Lower Upper  
 50 100  
 52 32.6 22.7 42.3

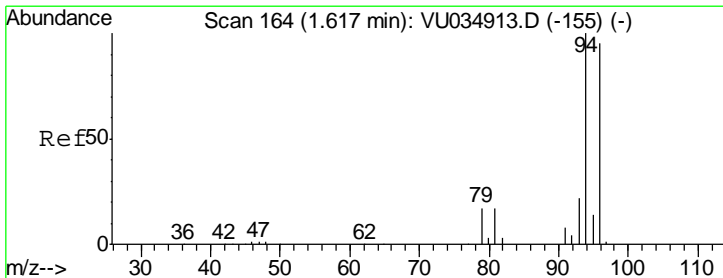
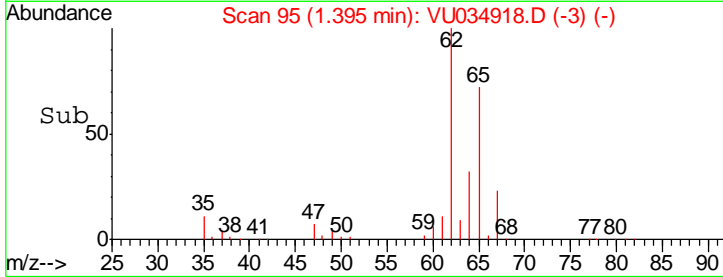
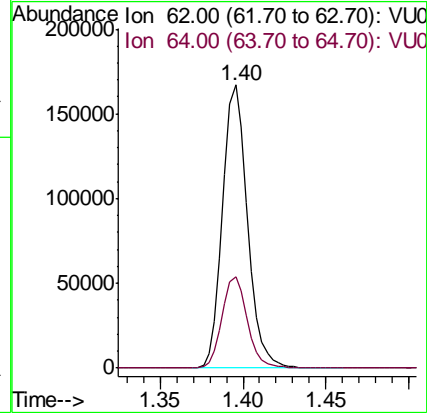
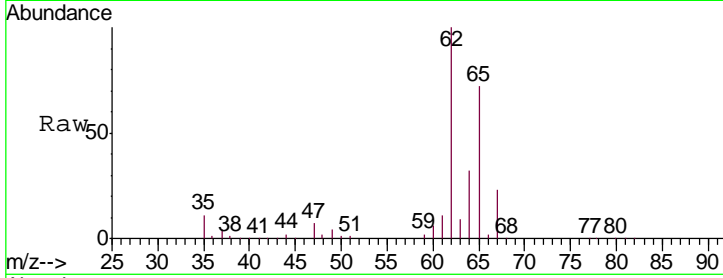




#5  
 Vinyl chloride  
 Concen: 49.918 ug/L  
 RT: 1.40 min Scan# 95  
 Delta R.T. -0.00 min  
 Lab File: VU034918.D  
 Acq: 03 Oct 2019 16:51

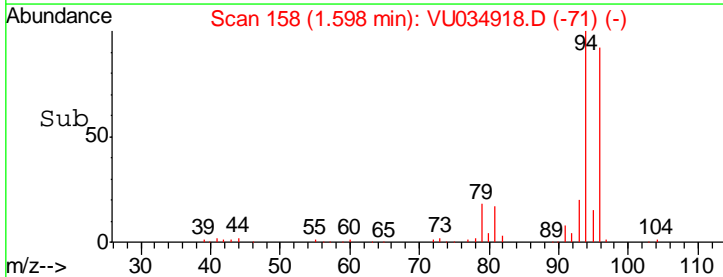
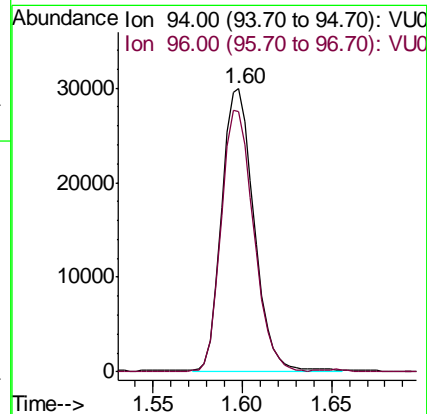
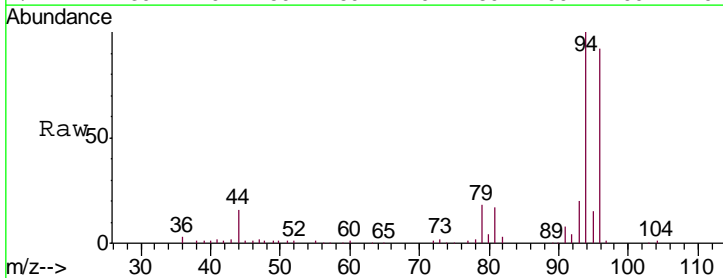
Instrument :  
 MSVOA\_U  
 ClientSampled :  
 DBAC4

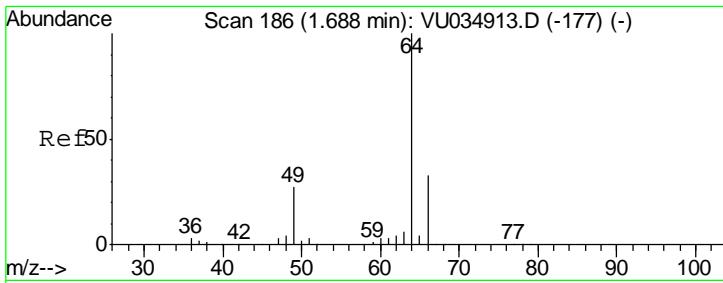
Tgt Ion	Resp	Lower	Upper
62	174572		
64	32.3	23.1	42.9



#6  
 Bromomethane  
 Concen: 18.622 ug/L  
 RT: 1.60 min Scan# 158  
 Delta R.T. -0.02 min  
 Lab File: VU034918.D  
 Acq: 03 Oct 2019 16:51

Tgt Ion	Resp	Lower	Upper
94	37902		
96	91.8	66.4	123.4

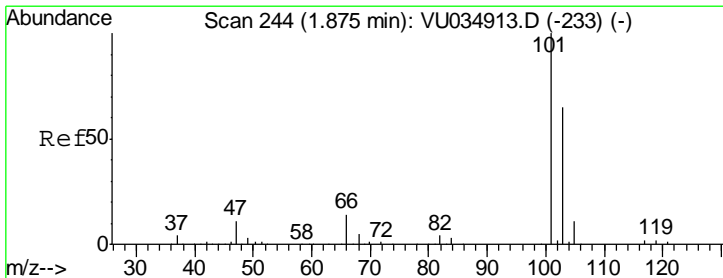
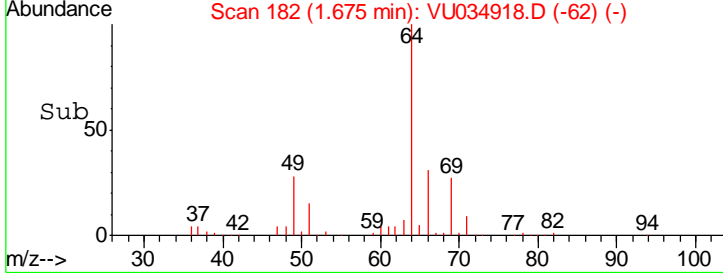
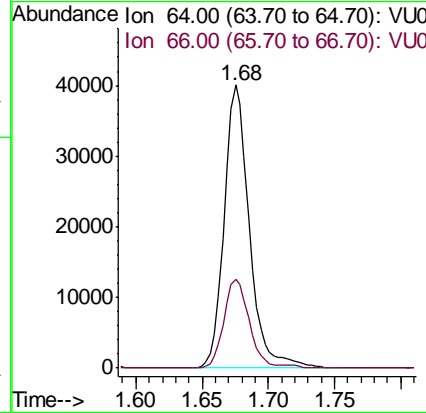
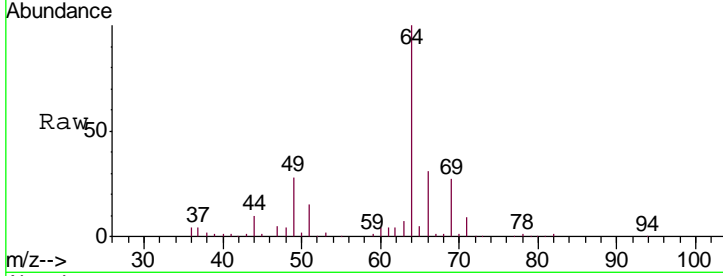




#8  
 Chloroethane  
 Concen: 25.879 ug/L  
 RT: 1.68 min Scan# 182  
 Delta R.T. -0.01 min  
 Lab File: VU034918.D  
 Acq: 03 Oct 2019 16:51

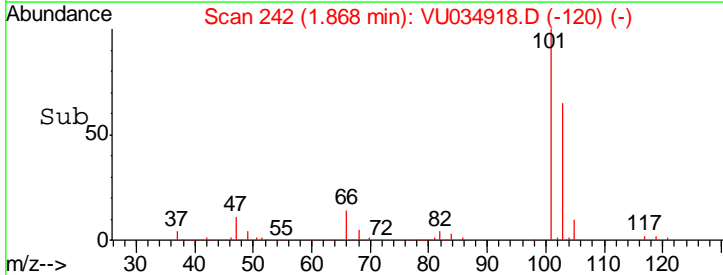
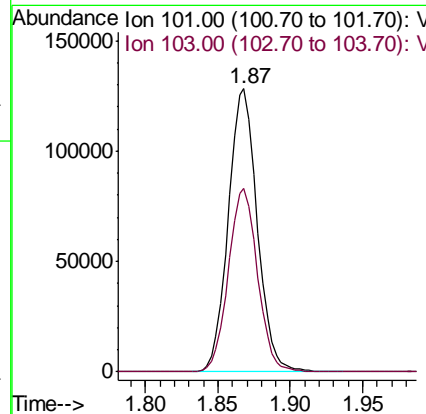
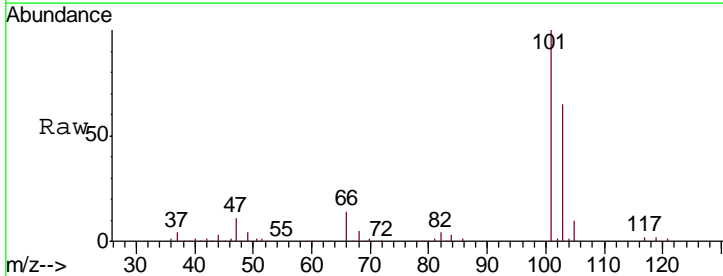
Instrument : MSVOA\_U  
 ClientSampled : DBAC4

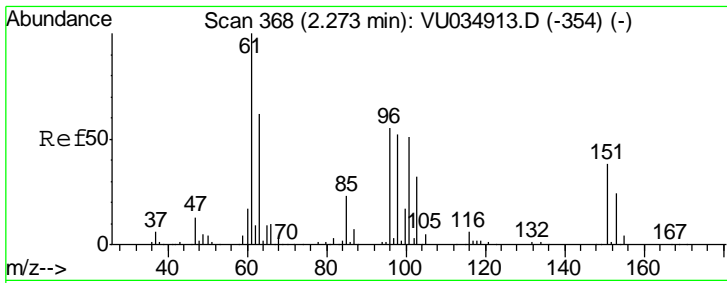
Tgt Ion: 64 Resp: 53051  
 Ion Ratio Lower Upper  
 64 100  
 66 31.5 22.9 42.5



#9  
 Trichlorofluoromethane  
 Concen: 42.929 ug/L  
 RT: 1.87 min Scan# 242  
 Delta R.T. -0.01 min  
 Lab File: VU034918.D  
 Acq: 03 Oct 2019 16:51

Tgt Ion: 101 Resp: 176910  
 Ion Ratio Lower Upper  
 101 100  
 103 65.4 51.8 77.6





#10

1,1,2-Trichloro-1,2,2-trifluoroethane

Concen: 23.355 ug/L

RT: 2.27 min Scan# 366

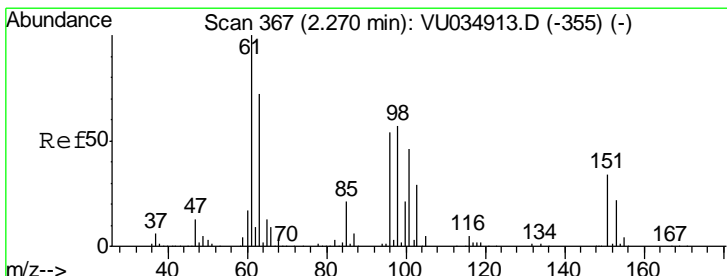
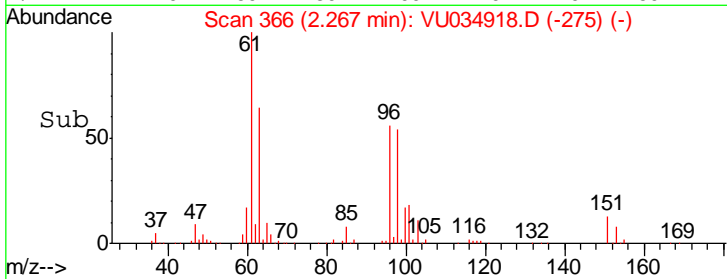
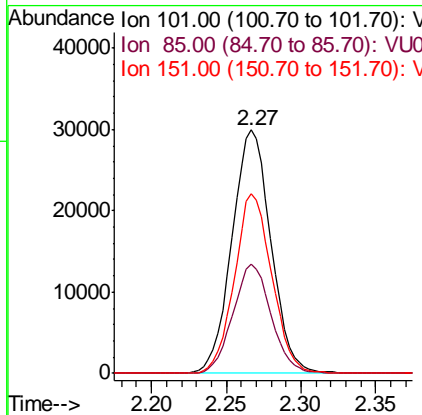
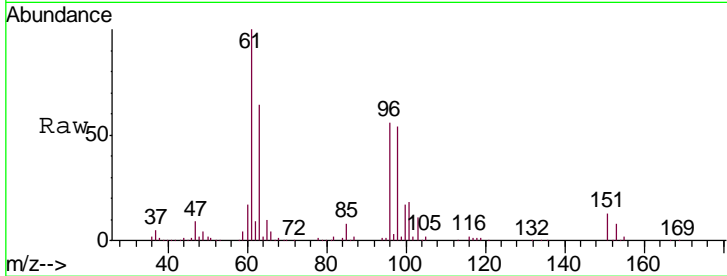
Delta R.T. -0.01 min

Lab File: VU034918.D

Acq: 03 Oct 2019 16:51

Instrument : MSVOA\_U  
ClientSampled : DBAC4

Tgt Ion	Resp	Lower	Upper
101	54309		
101	100		
85	43.9	35.9	53.9
151	70.8	59.0	88.4



#12

1,1-Dichloroethene

Concen: 66.255 ug/L

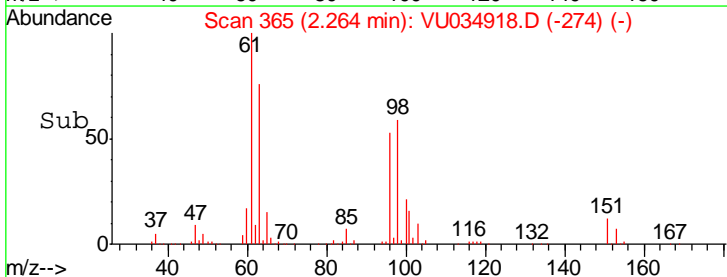
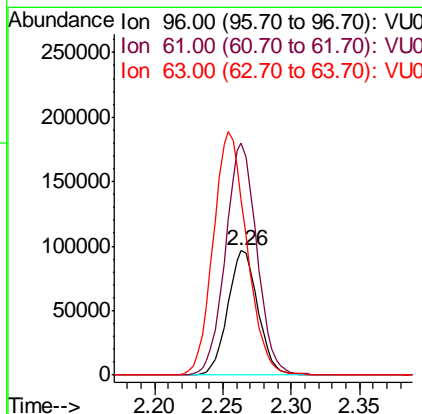
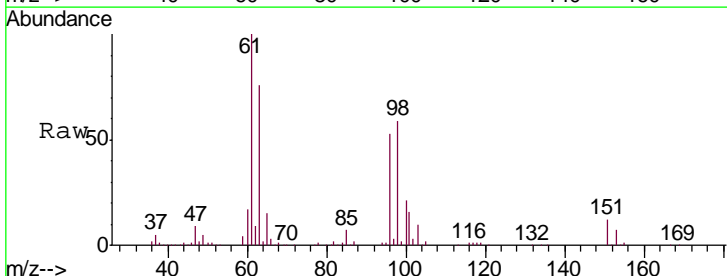
RT: 2.26 min Scan# 365

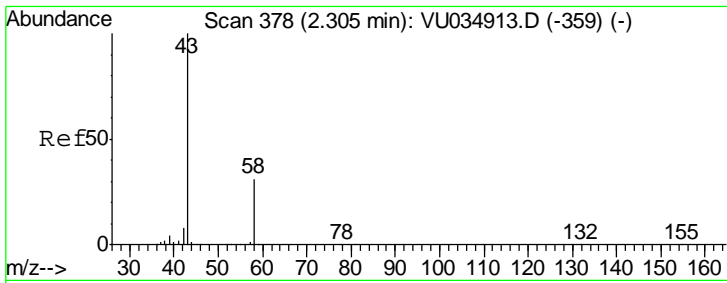
Delta R.T. -0.01 min

Lab File: VU034918.D

Acq: 03 Oct 2019 16:51

Tgt Ion	Resp	Lower	Upper
96	147906		
96	100		
61	187.0	131.2	243.6
63	141.9	97.6	181.2

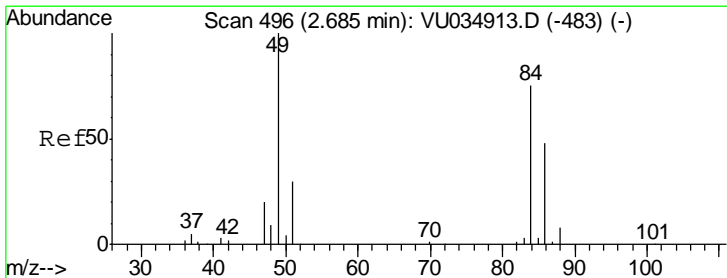
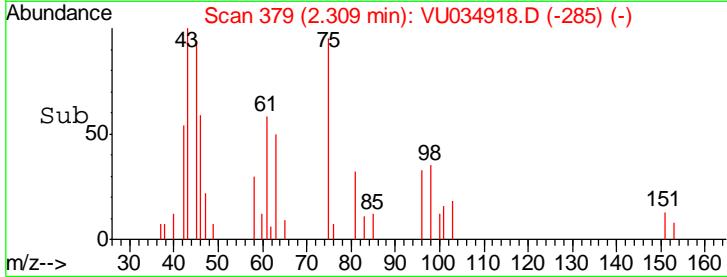
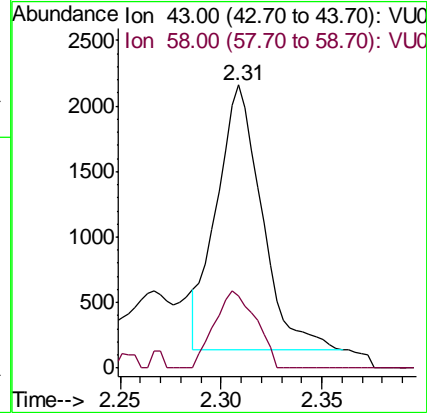
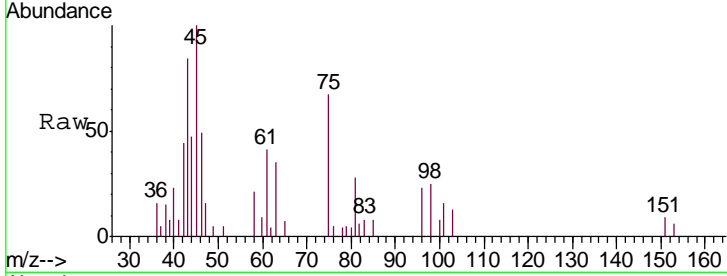




#13  
 Acetone  
 Concen: 1.444 ug/L  
 RT: 2.31 min Scan# 379  
 Delta R.T. 0.00 min  
 Lab File: VU034918.D  
 Acq: 03 Oct 2019 16:51

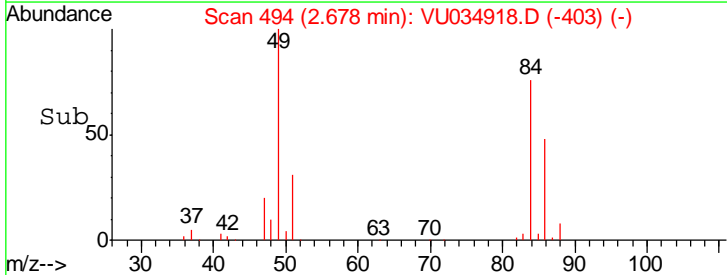
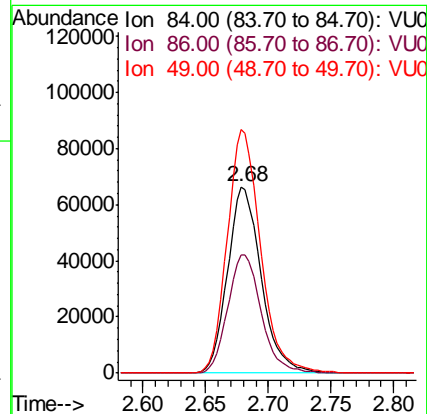
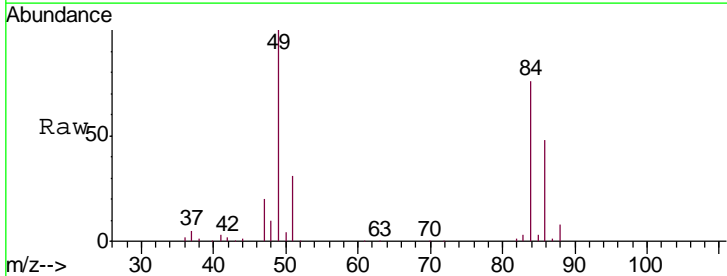
Instrument :  
 MSVOA\_U  
 ClientSampled :  
 DBAC4

Tgt Ion	Resp	Lower	Upper
43	100		
58	26.8	0.0	61.4

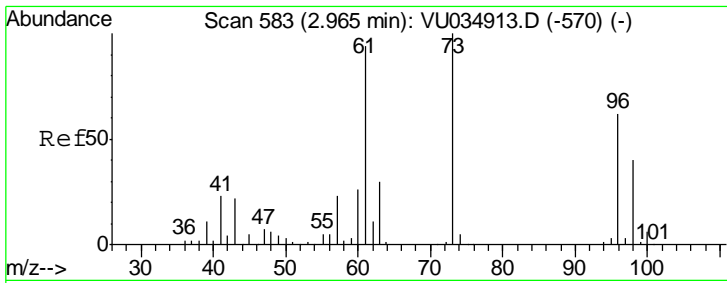


#16  
 Methylene chloride  
 Concen: 43.607 ug/L  
 RT: 2.68 min Scan# 494  
 Delta R.T. -0.01 min  
 Lab File: VU034918.D  
 Acq: 03 Oct 2019 16:51

Tgt Ion	Resp	Lower	Upper
84	100		
86	63.4	44.9	83.5
49	130.8	93.2	173.2



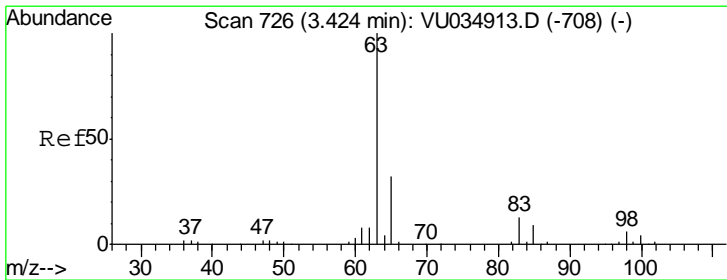
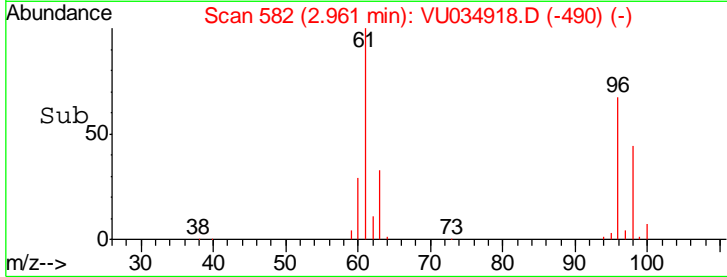
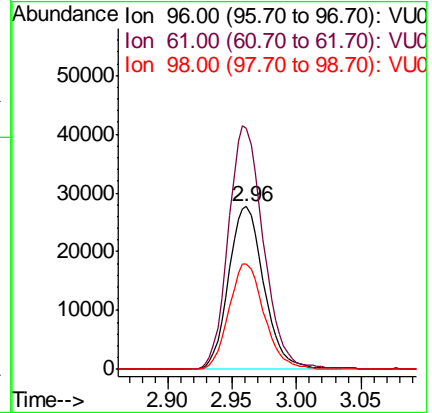
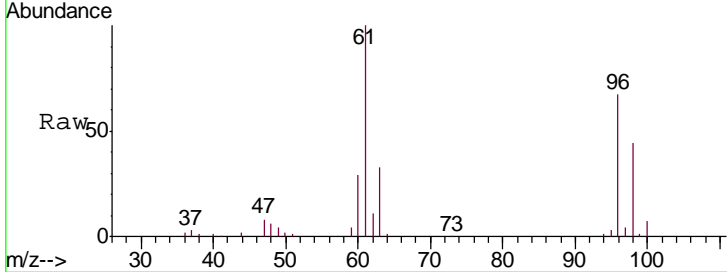




#17  
 trans-1,2-Dichloroethene  
 Concen: 21.143 ug/L  
 RT: 2.96 min Scan# 582  
 Delta R.T. -0.00 min  
 Lab File: VU034918.D  
 Acq: 03 Oct 2019 16:51

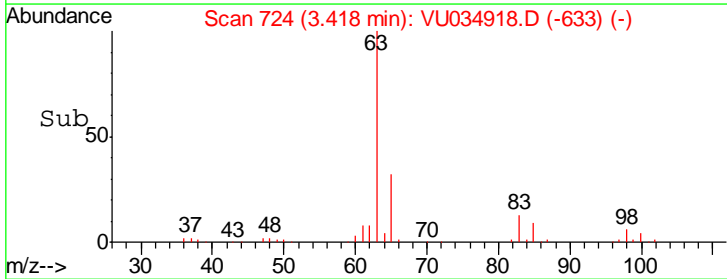
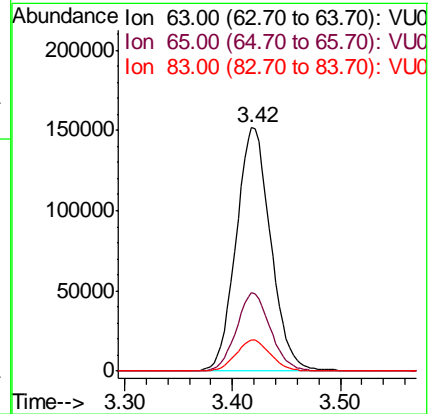
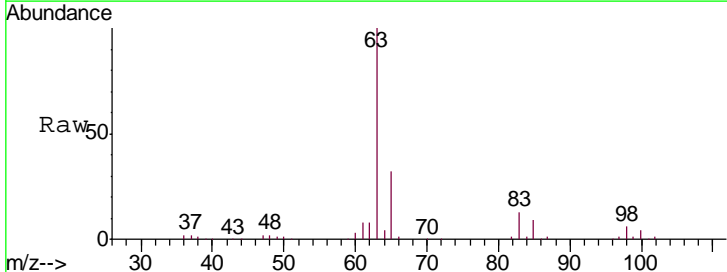
Instrument : MSVOA\_U  
 ClientSampled : DBAC4

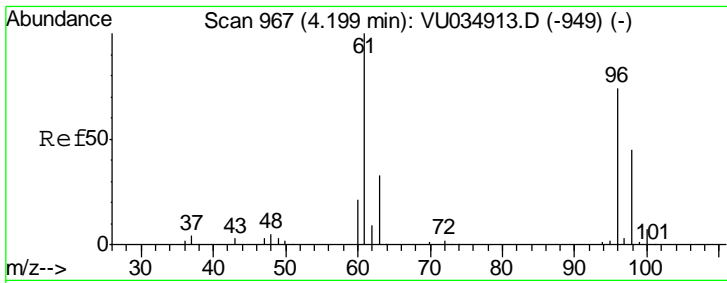
Tgt Ion	Resp	Lower	Upper
96	52803		
Ion Ratio			
96	100		
61	148.6	107.0	198.6
98	65.2	45.1	83.7



#19  
 1,1-Dichloroethane  
 Concen: 67.051 ug/L  
 RT: 3.42 min Scan# 724  
 Delta R.T. -0.01 min  
 Lab File: VU034918.D  
 Acq: 03 Oct 2019 16:51

Tgt Ion	Resp	Lower	Upper
63	338748		
Ion Ratio			
63	100		
65	32.2	22.4	41.6
83	12.7	9.2	17.2

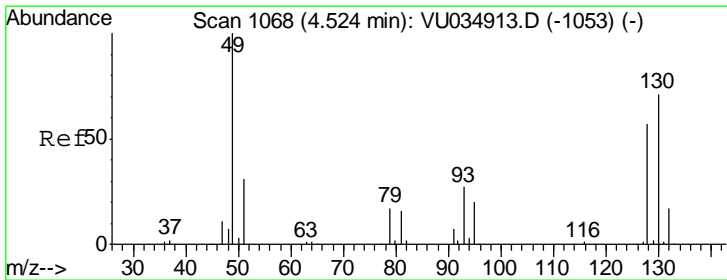
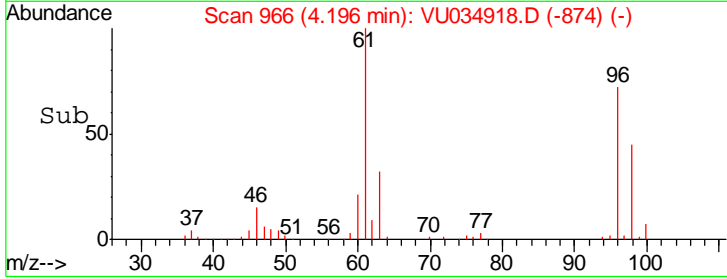
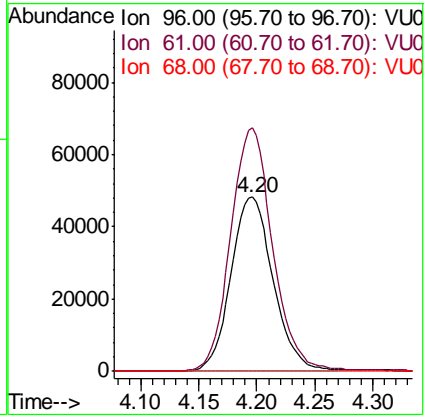
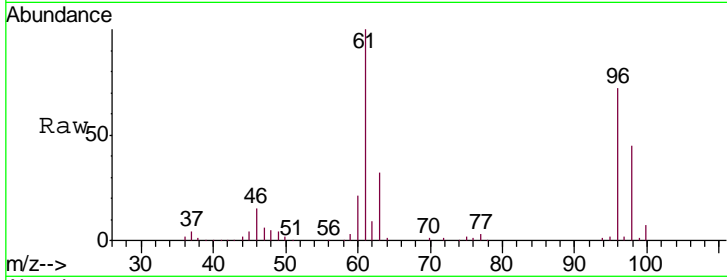




#20  
 cis-1,2-Dichloroethene  
 Concen: 43.527 ug/L  
 RT: 4.20 min Scan# 966  
 Delta R.T. -0.00 min  
 Lab File: VU034918.D  
 Acq: 03 Oct 2019 16:51

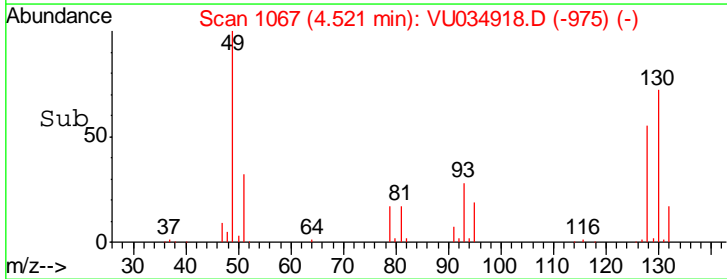
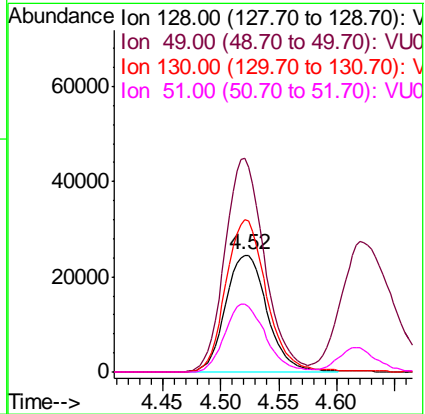
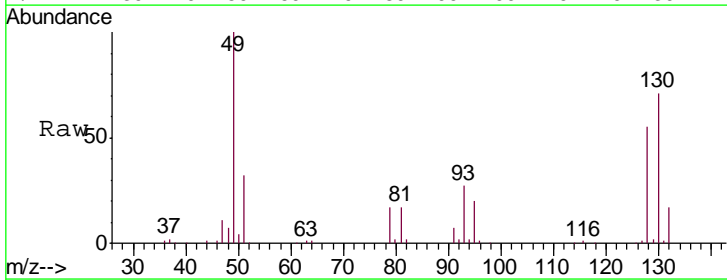
Instrument : MSVOA\_U  
 ClientSampled : DBAC4

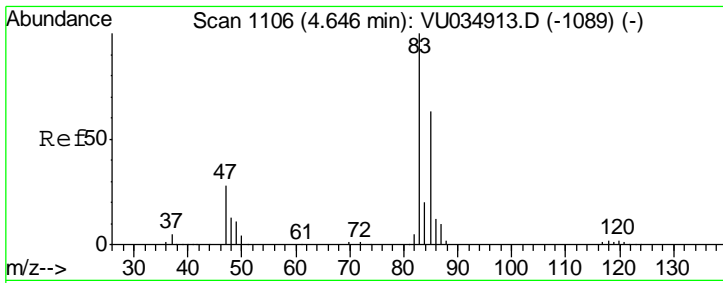
Tgt Ion	Resp	Lower	Upper
96	122370		
61	139.8	95.2	176.8
68	0.0	0.0	0.0



#23  
 Bromochloromethane  
 Concen: 43.463 ug/L  
 RT: 4.52 min Scan# 1067  
 Delta R.T. -0.00 min  
 Lab File: VU034918.D  
 Acq: 03 Oct 2019 16:51

Tgt Ion	Resp	Lower	Upper
128	61024		
49	183.1	123.5	229.3
130	130.9	87.0	161.6
51	57.8	43.7	65.5

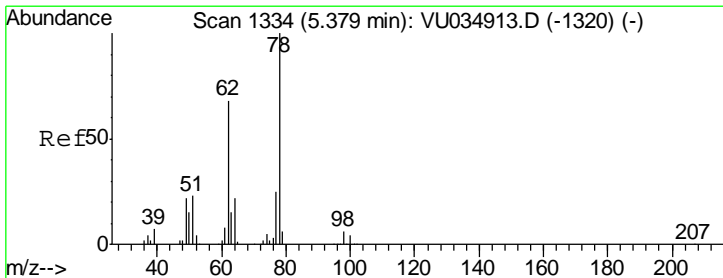
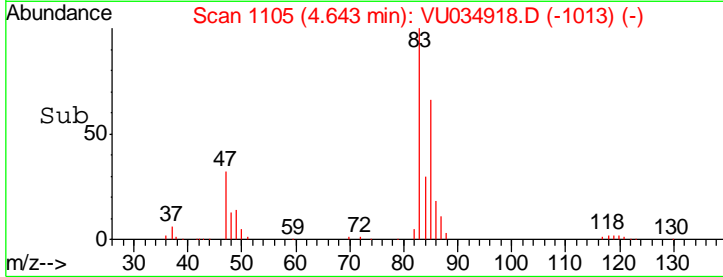
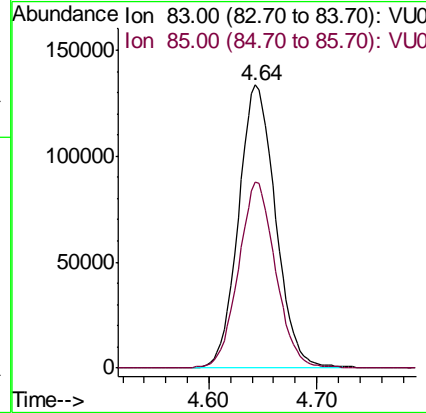
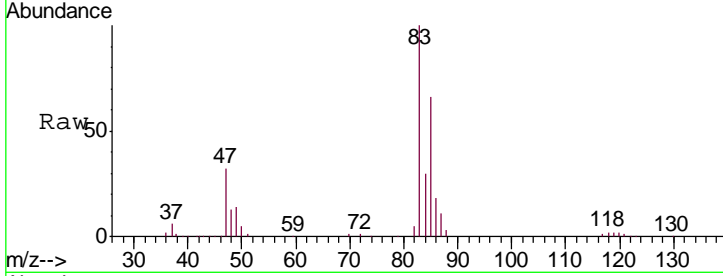




#25  
 Chloroform  
 Concen: 62.212 ug/L  
 RT: 4.64 min Scan# 1105  
 Delta R.T. -0.00 min  
 Lab File: VU034918.D  
 Acq: 03 Oct 2019 16:51

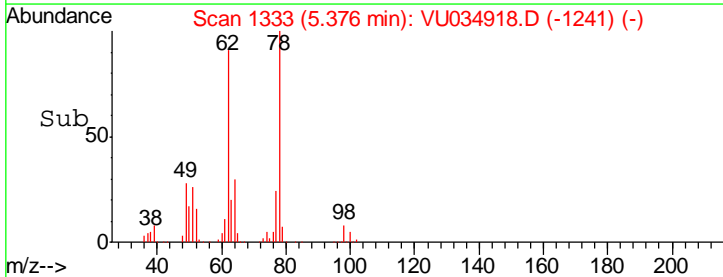
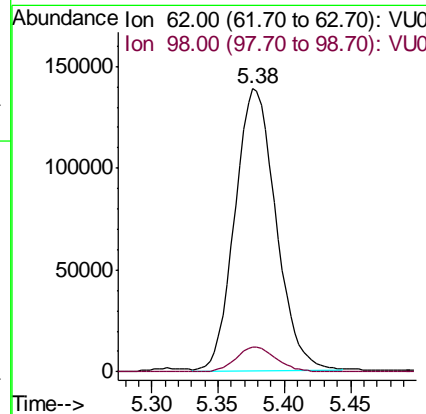
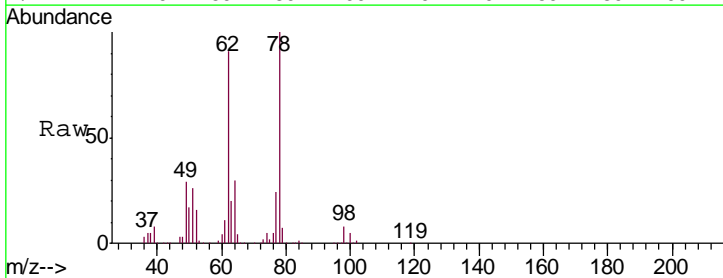
Instrument : MSVOA\_U  
 ClientSampled : DBAC4

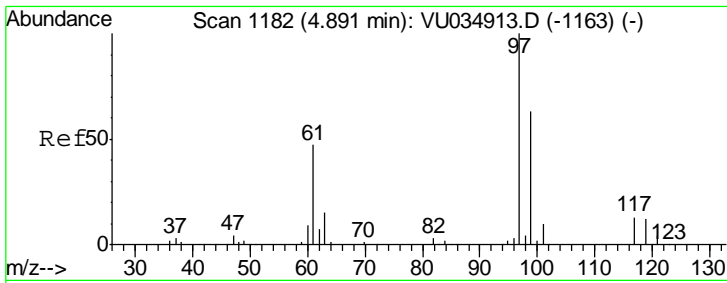
Tgt Ion: 83 Resp: 319697  
 Ion Ratio Lower Upper  
 83 100  
 85 65.7 44.2 82.2



#27  
 1,2-Dichloroethane  
 Concen: 72.818 ug/L  
 RT: 5.38 min Scan# 1333  
 Delta R.T. -0.00 min  
 Lab File: VU034918.D  
 Acq: 03 Oct 2019 16:51

Tgt Ion: 62 Resp: 297781  
 Ion Ratio Lower Upper  
 62 100  
 98 8.8 6.9 10.3

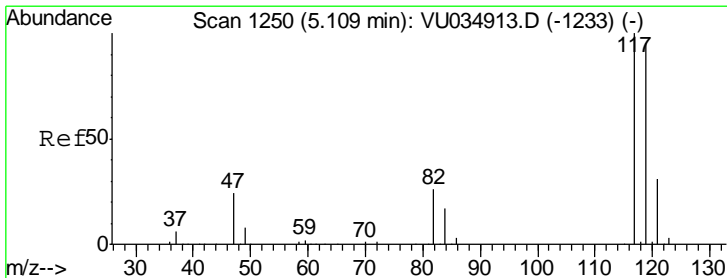
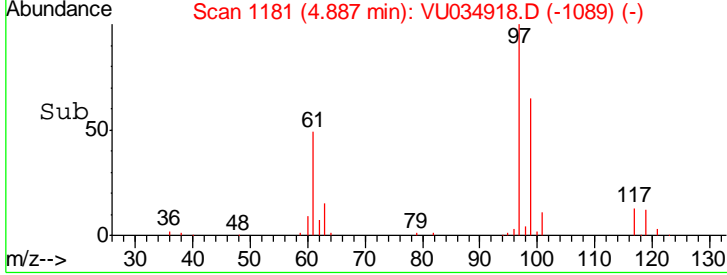
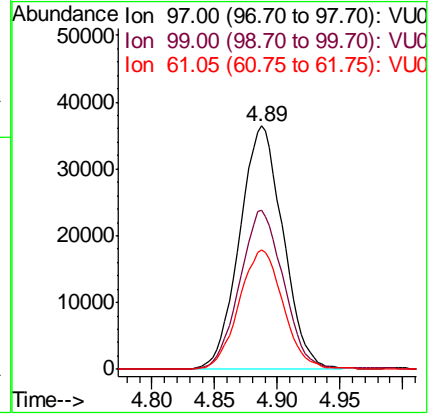
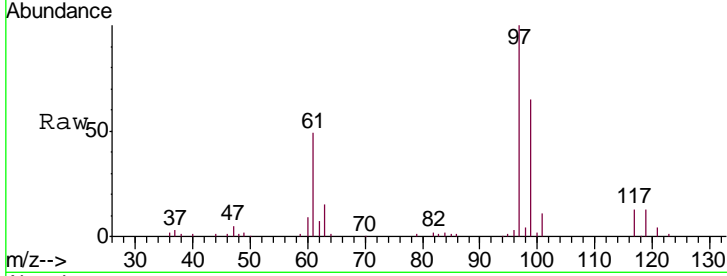




#30  
 1,1,1-Trichloroethane  
 Concen: 21.562 ug/L  
 RT: 4.89 min Scan# 1181  
 Delta R.T. -0.00 min  
 Lab File: VU034918.D  
 Acq: 03 Oct 2019 16:51

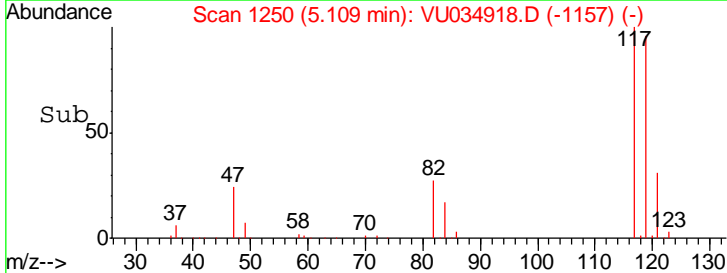
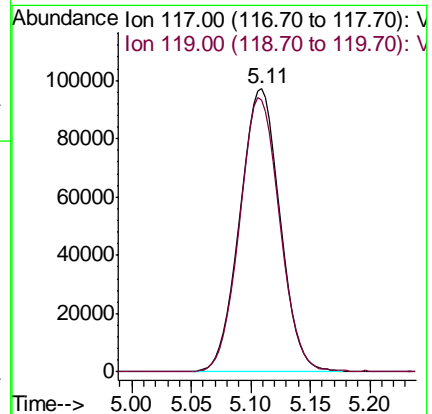
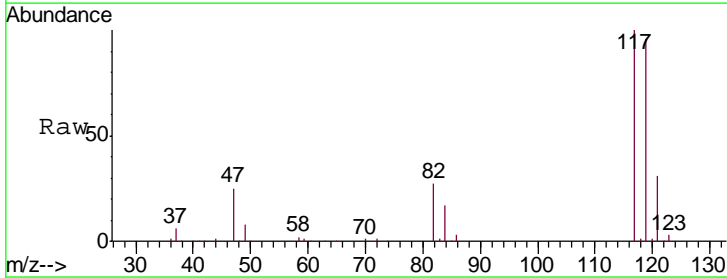
Instrument : MSVOA\_U  
 ClientSampled : DBAC4

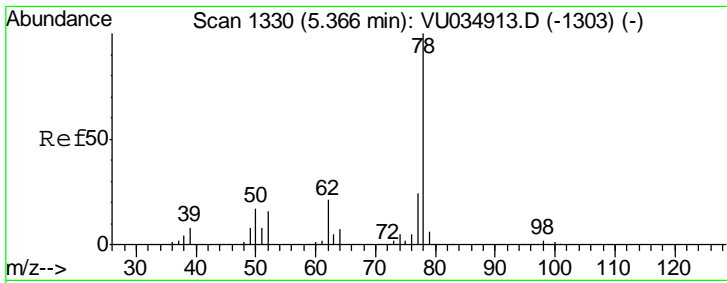
Tgt Ion	Resp	Lower	Upper
97	100		
99	65.6	51.1	76.7
61	49.8	38.7	58.1



#31  
 Carbon tetrachloride  
 Concen: 63.714 ug/L  
 RT: 5.11 min Scan# 1250  
 Delta R.T. -0.00 min  
 Lab File: VU034918.D  
 Acq: 03 Oct 2019 16:51

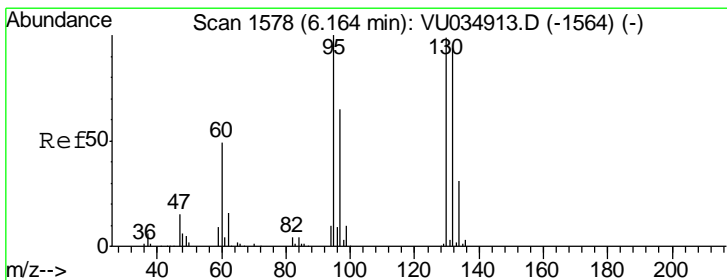
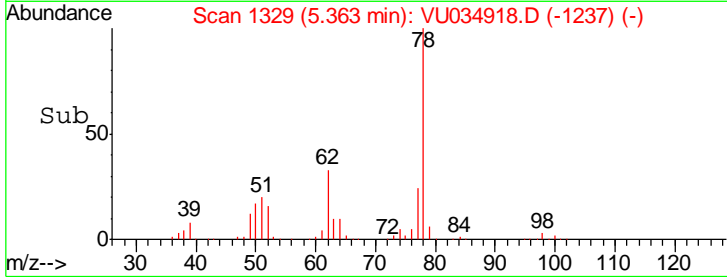
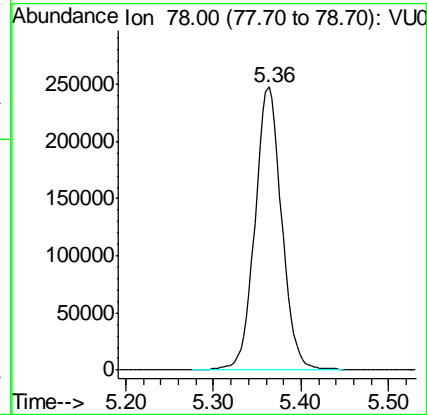
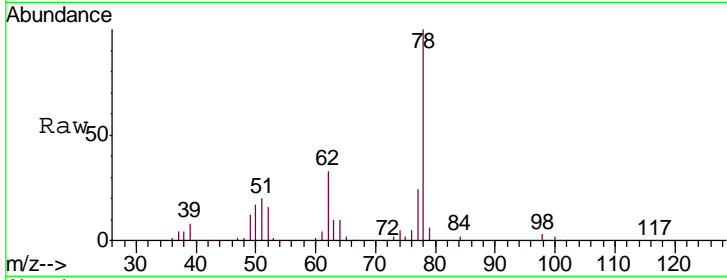
Tgt Ion	Resp	Lower	Upper
117	100		
119	97.1	77.5	116.3





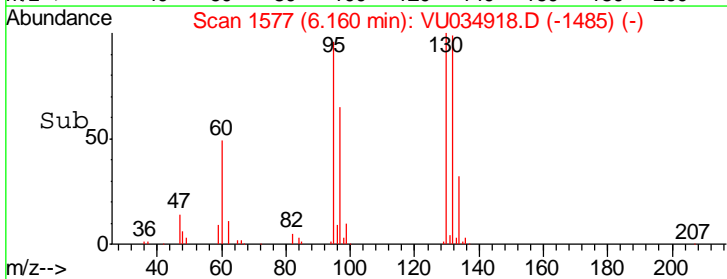
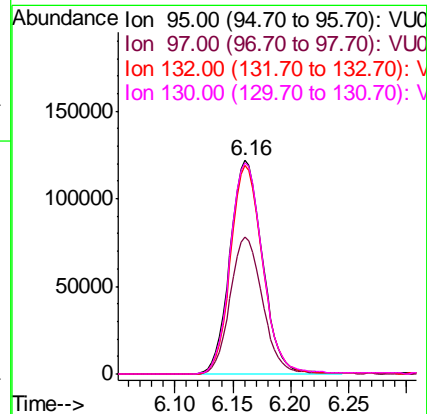
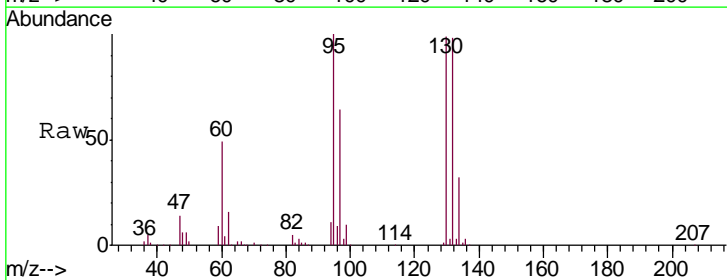
#33  
 Benzene  
 Concen: 47.720 ug/L  
 RT: 5.36 min Scan# 1329  
 Delta R.T. -0.00 min  
 Lab File: VU034918.D  
 Acq: 03 Oct 2019 16:51  
 Tgt Ion: 78 Resp: 525003

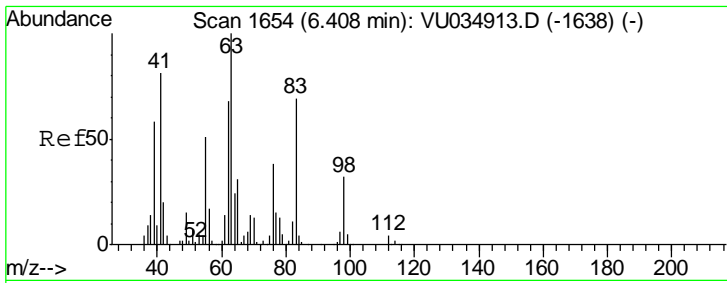
Instrument : MSVOA\_U  
 ClientSampled : DBAC4



#34  
 Trichloroethene  
 Concen: 85.720 ug/L  
 RT: 6.16 min Scan# 1577  
 Delta R.T. -0.00 min  
 Lab File: VU034918.D  
 Acq: 03 Oct 2019 16:51  
 Tgt Ion: 95 Resp: 237643

Ion	Ratio	Lower	Upper
95	100		
97	64.3	45.1	83.9
132	97.8	65.9	122.5
130	98.8	69.0	128.2

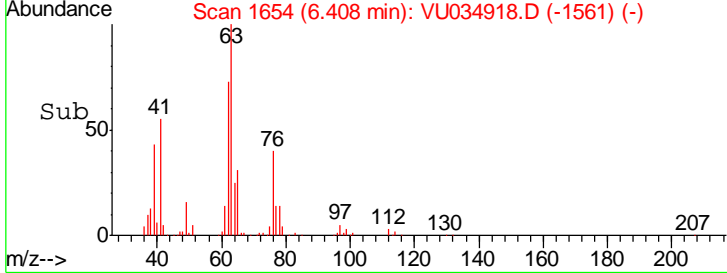
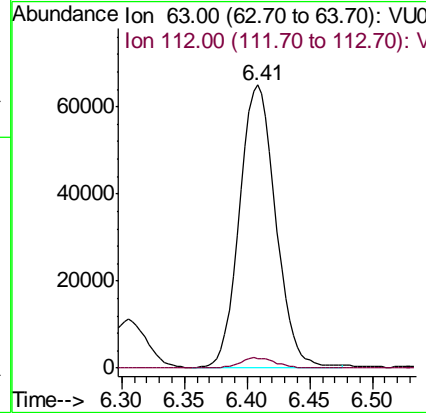
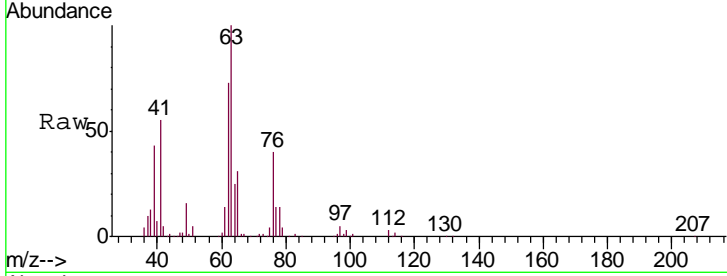




#37  
 1,2-Dichloropropane  
 Concen: 42.384 ug/L  
 RT: 6.41 min Scan# 1654  
 Delta R.T. -0.00 min  
 Lab File: VU034918.D  
 Acq: 03 Oct 2019 16:51

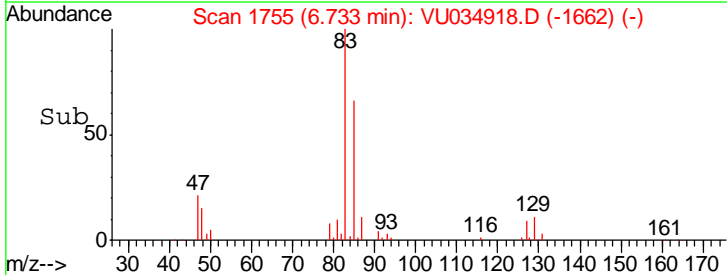
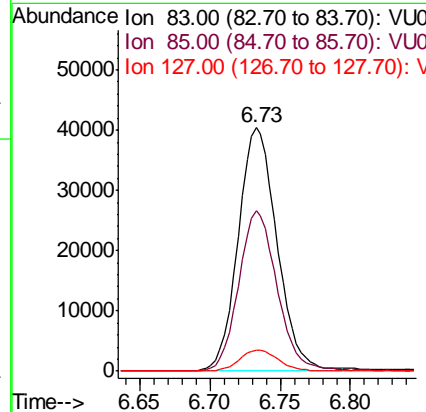
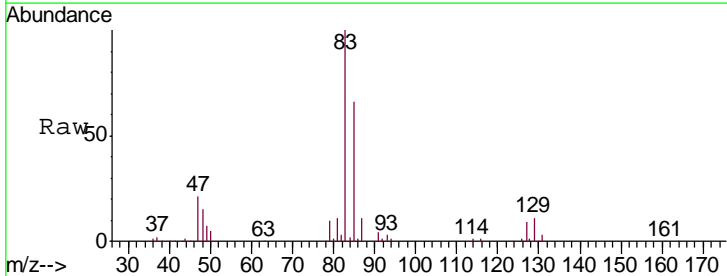
Instrument : MSVOA\_U  
 ClientSampled : DBAC4

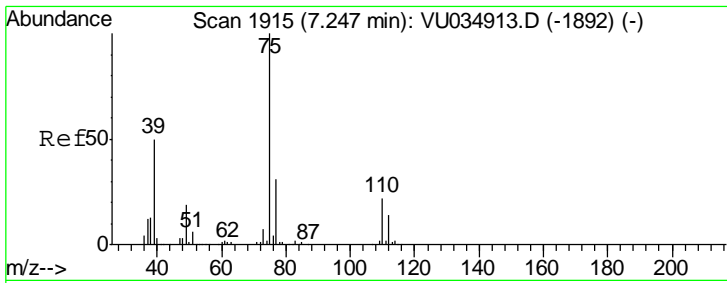
Tgt Ion	Resp	Lower	Upper
63	129962		
112	3.6	2.9	4.3



#38  
 Bromodichloromethane  
 Concen: 20.984 ug/L  
 RT: 6.73 min Scan# 1755  
 Delta R.T. -0.00 min  
 Lab File: VU034918.D  
 Acq: 03 Oct 2019 16:51

Tgt Ion	Resp	Lower	Upper
83	78107		
85	65.8	44.3	82.3
127	8.5	7.0	10.4

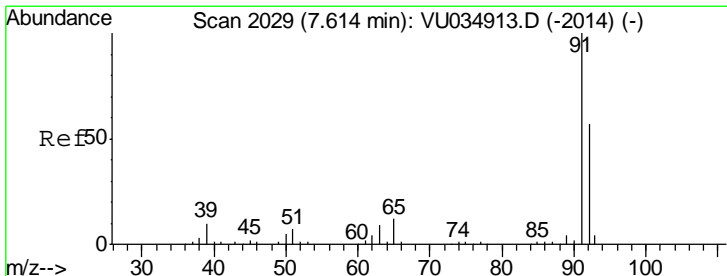
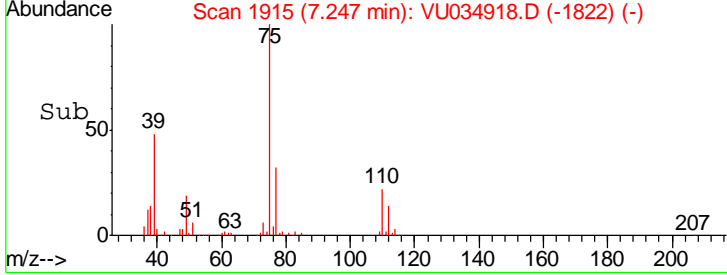
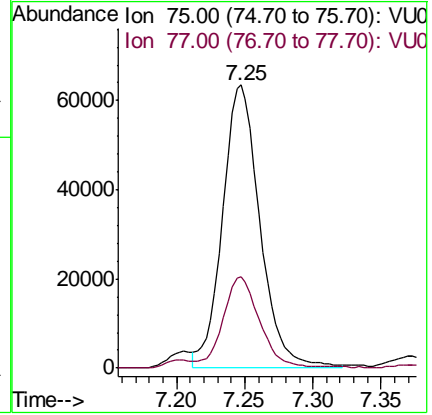
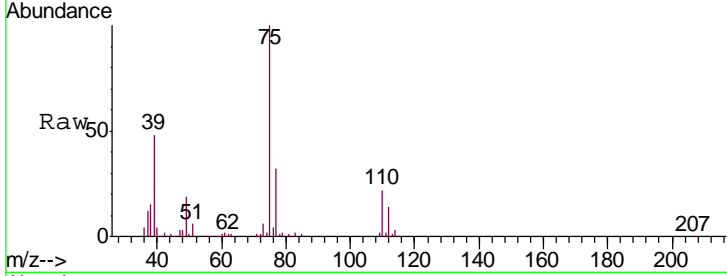




#39  
 cis-1,3-Dichloropropene  
 Concen: 25.954 ug/L  
 RT: 7.25 min Scan# 1915  
 Delta R.T. -0.00 min  
 Lab File: VU034918.D  
 Acq: 03 Oct 2019 16:51

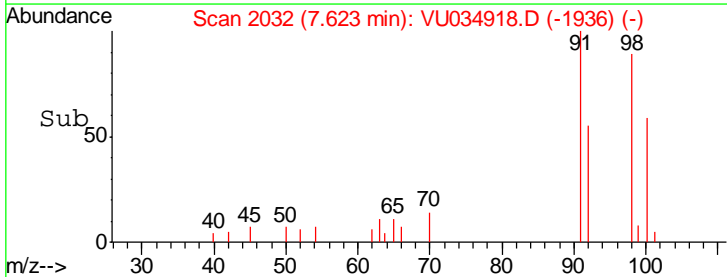
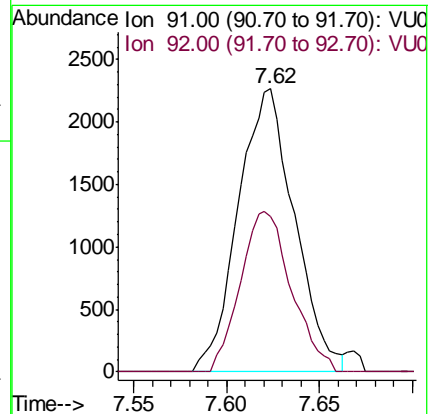
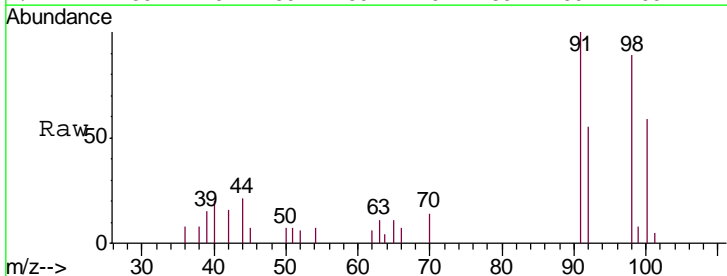
Instrument : MSVOA\_U  
 ClientSampled : DBAC4

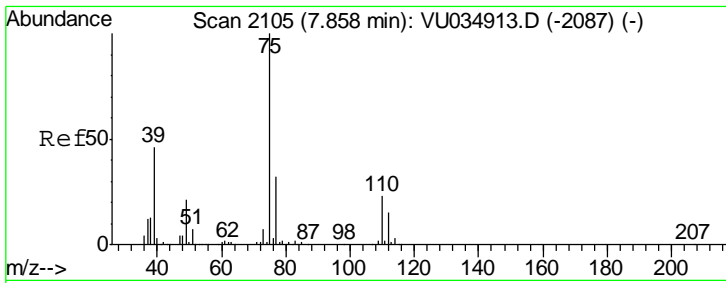
Tgt Ion: 75 Resp: 120578  
 Ion Ratio Lower Upper  
 75 100  
 77 32.3 22.0 40.8



#42  
 Toluene  
 Concen: 0.405 ug/L  
 RT: 7.62 min Scan# 2032  
 Delta R.T. 0.01 min  
 Lab File: VU034918.D  
 Acq: 03 Oct 2019 16:51

Tgt Ion: 91 Resp: 4790  
 Ion Ratio Lower Upper  
 91 100  
 92 55.0 39.9 74.1

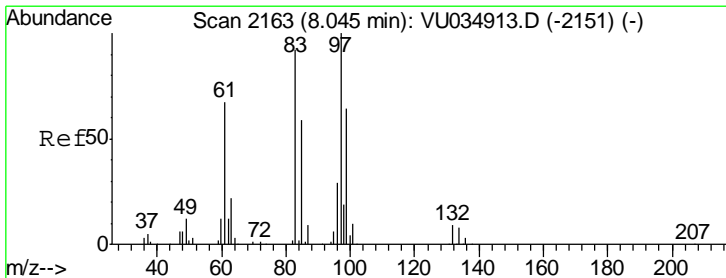
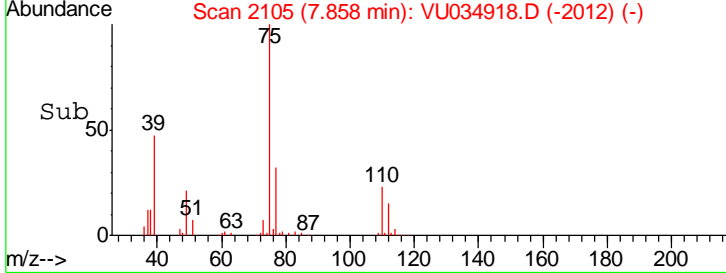
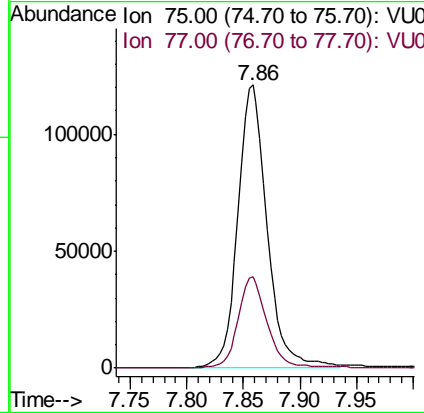
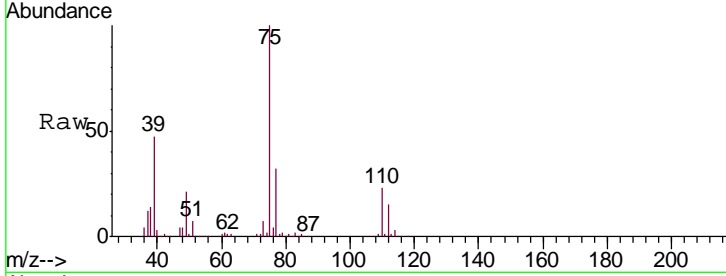




#44  
 trans-1,3-Dichloropropene  
 Concen: 53.906 ug/L  
 RT: 7.86 min Scan# 2105  
 Delta R.T. -0.00 min  
 Lab File: VU034918.D  
 Acq: 03 Oct 2019 16:51

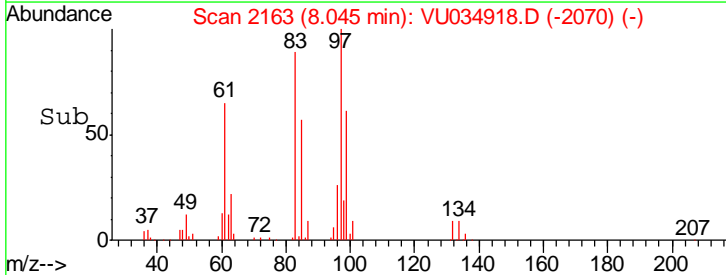
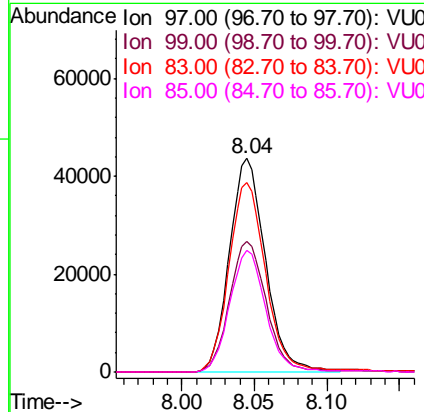
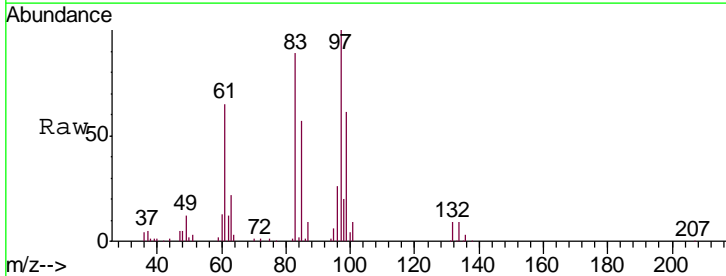
Instrument : MSVOA\_U  
 ClientSampled : DBAC4

Tgt Ion: 75 Resp: 219518  
 Ion Ratio Lower Upper  
 75 100  
 77 32.5 22.2 41.2

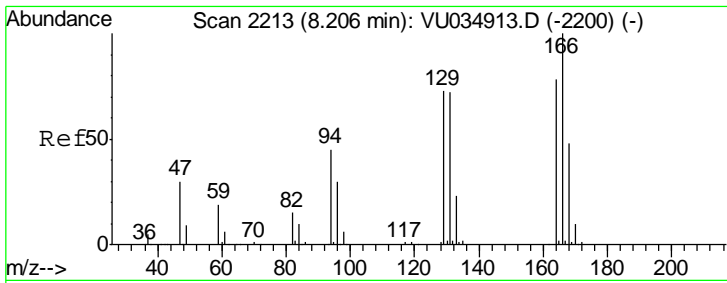


#45  
 1,1,2-Trichloroethane  
 Concen: 27.875 ug/L  
 RT: 8.04 min Scan# 2163  
 Delta R.T. -0.00 min  
 Lab File: VU034918.D  
 Acq: 03 Oct 2019 16:51

Tgt Ion: 97 Resp: 75156  
 Ion Ratio Lower Upper  
 97 100  
 99 61.2 44.8 83.2  
 83 88.8 64.4 119.6  
 85 56.7 41.4 76.8







#46

Tetrachloroethene

Concen: 74.910 ug/L

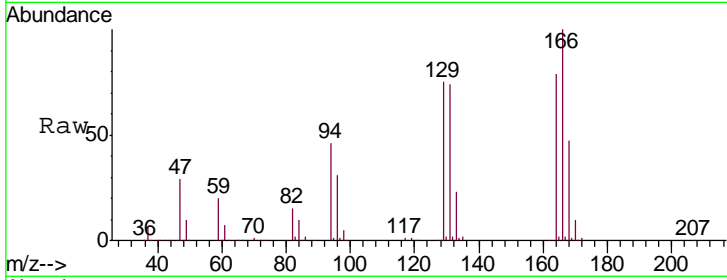
RT: 8.21 min Scan# 2213

Delta R.T. -0.00 min

Lab File: VU034918.D

Acq: 03 Oct 2019 16:51

Instrument : MSVOA\_U  
ClientSampled : DBAC4



Tgt Ion: 164 Resp: 164745

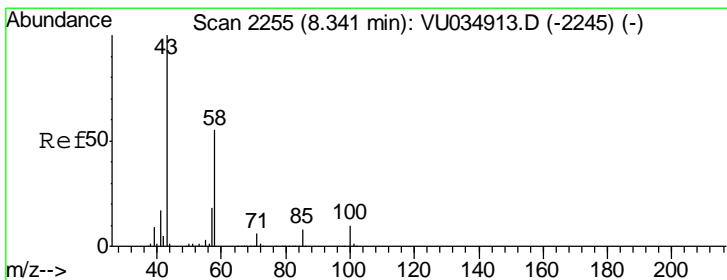
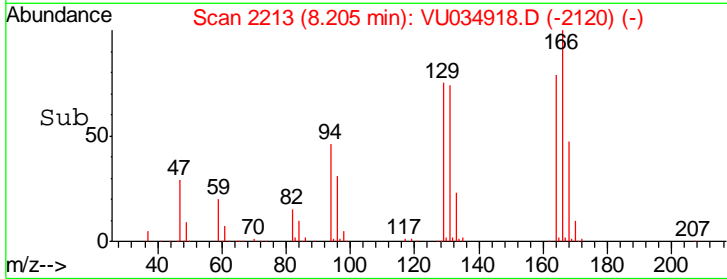
Ion Ratio Lower Upper

164 100

129 94.8 65.9 122.3

131 93.1 64.9 120.5

166 126.2 89.9 166.9



#48

2-Hexanone

Concen: 1.521 ug/L

RT: 8.34 min Scan# 2256

Delta R.T. 0.00 min

Lab File: VU034918.D

Acq: 03 Oct 2019 16:51

Tgt Ion: 43 Resp: 5504

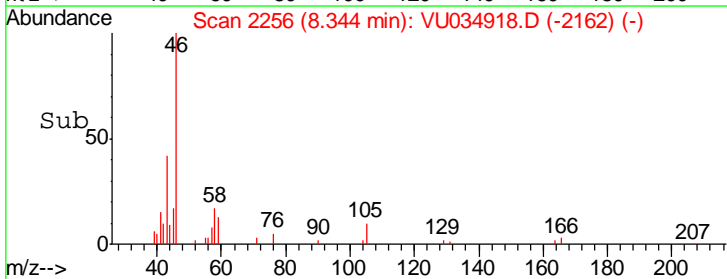
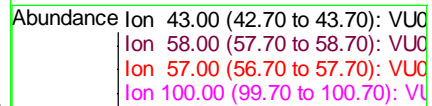
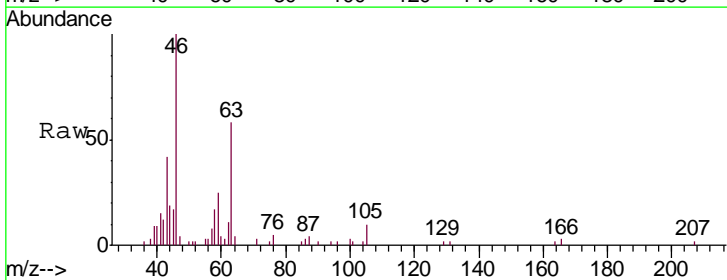
Ion Ratio Lower Upper

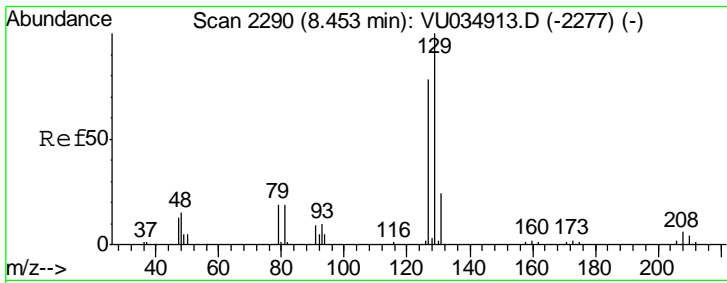
43 100

58 47.9 40.8 61.2

57 5.6 14.0 21.0#

100 6.3 8.0 12.0#

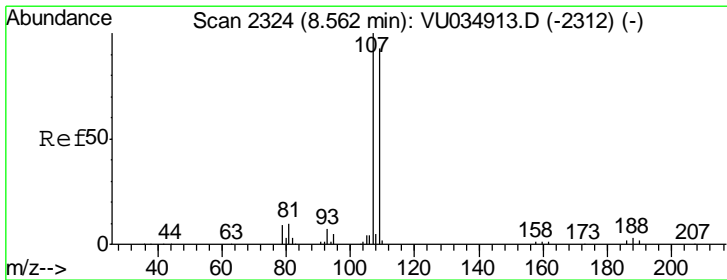
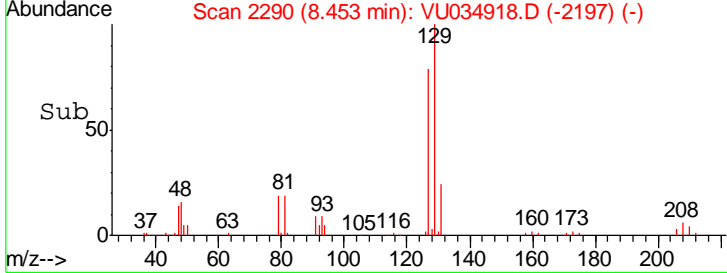
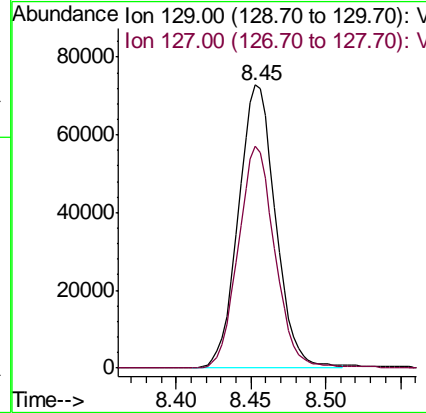
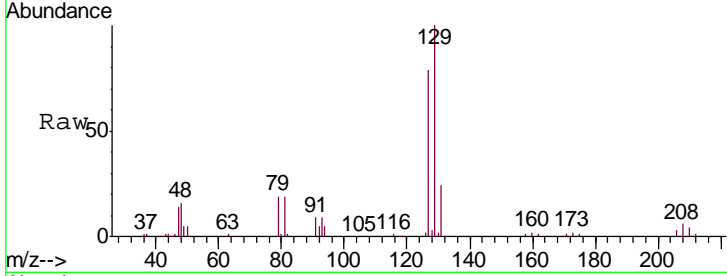




#49  
 Dibromochloromethane  
 Concen: 43.237 ug/L  
 RT: 8.45 min Scan# 2290  
 Delta R.T. -0.00 min  
 Lab File: VU034918.D  
 Acq: 03 Oct 2019 16:51

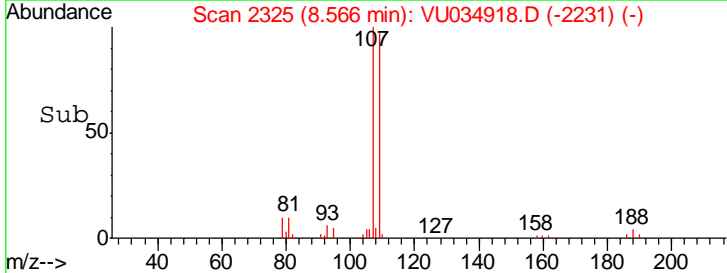
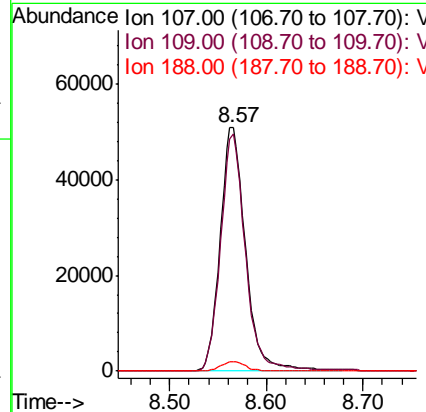
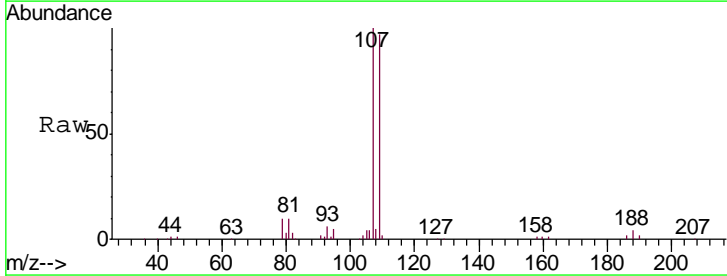
Instrument : MSVOA\_U  
 ClientSampled : DBAC4

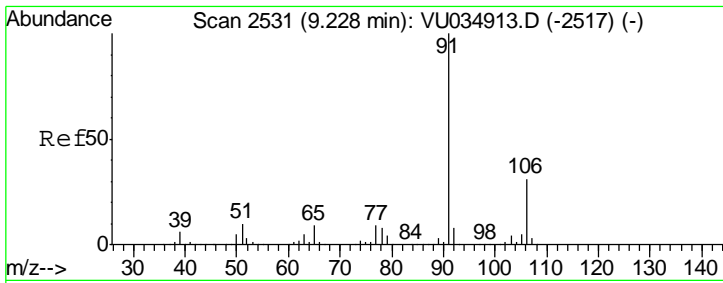
Tgt Ion	Resp	Lower	Upper
129	100		
127	78.5	54.3	100.9



#50  
 1,2-Dibromoethane  
 Concen: 32.045 ug/L  
 RT: 8.57 min Scan# 2325  
 Delta R.T. 0.00 min  
 Lab File: VU034918.D  
 Acq: 03 Oct 2019 16:51

Tgt Ion	Resp	Lower	Upper
107	100		
109	97.4	65.2	121.0
188	3.9	2.6	4.0

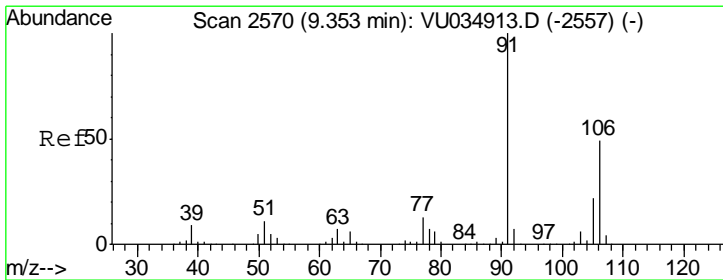
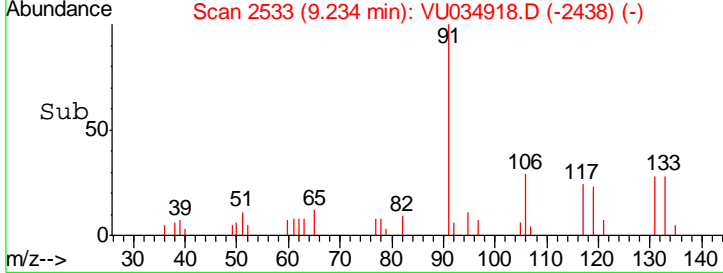
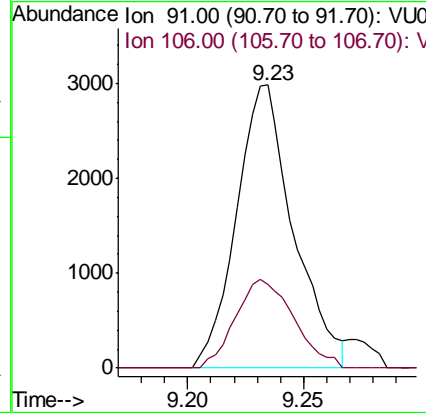
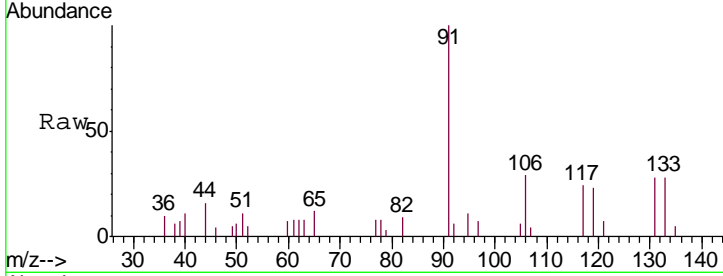




#52  
 Ethylbenzene  
 Concen: 0.388 ug/L  
 RT: 9.23 min Scan# 2533  
 Delta R.T. 0.01 min  
 Lab File: VU034918.D  
 Acq: 03 Oct 2019 16:51

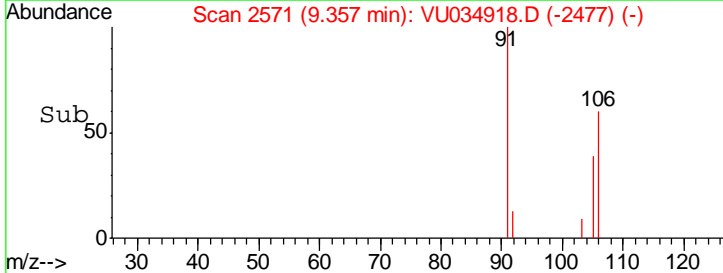
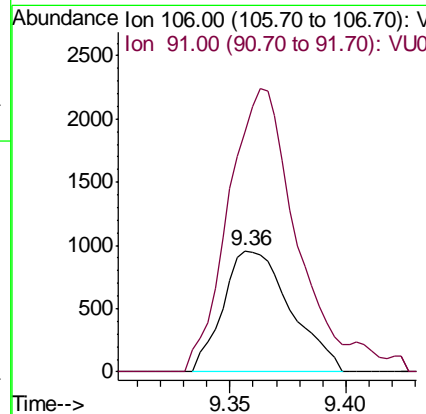
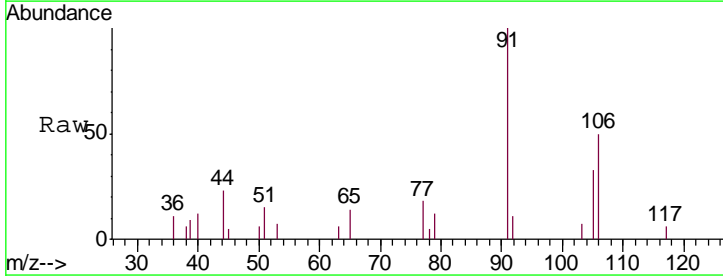
Instrument : MSVOA\_U  
 ClientSampled : DBAC4

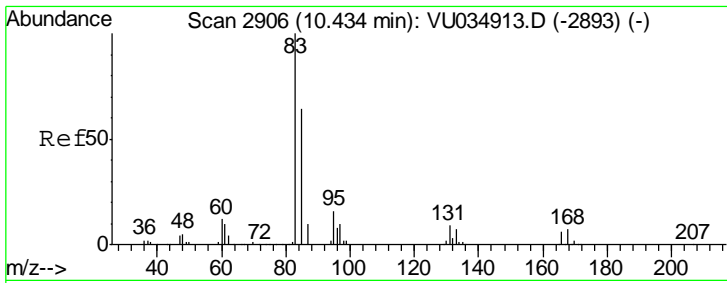
Tgt Ion	Resp	Lower	Upper
91	100		
106	29.5	21.6	40.2



#53  
 m,p-Xylene  
 Concen: 0.398 ug/L  
 RT: 9.36 min Scan# 2571  
 Delta R.T. 0.00 min  
 Lab File: VU034918.D  
 Acq: 03 Oct 2019 16:51

Tgt Ion	Resp	Lower	Upper
106	100		
91	198.7	144.5	268.3

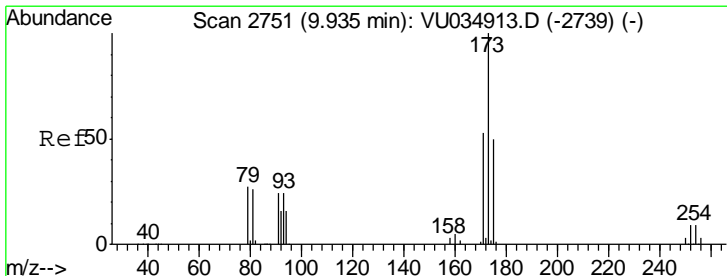
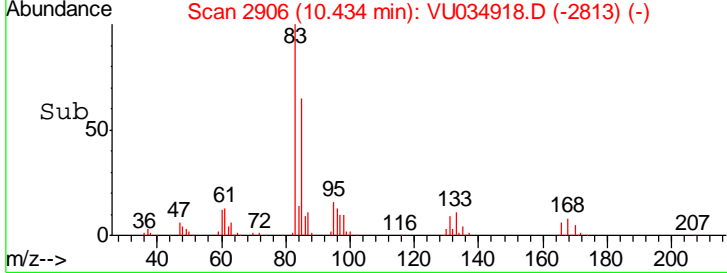
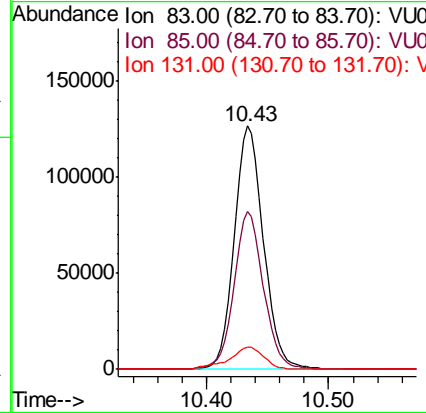
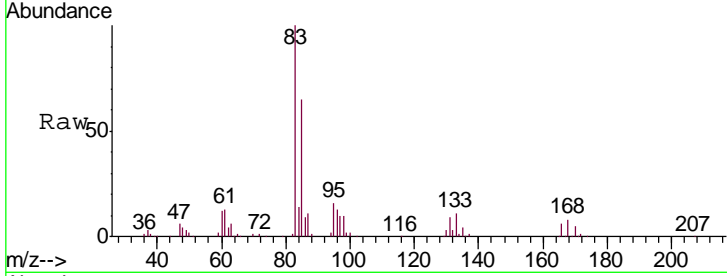




#58  
 1,1,2,2-Tetrachloroethane  
 Concen: 42.860 ug/L  
 RT: 10.43 min Scan# 2906  
 Delta R.T. -0.00 min  
 Lab File: VU034918.D  
 Acq: 03 Oct 2019 16:51

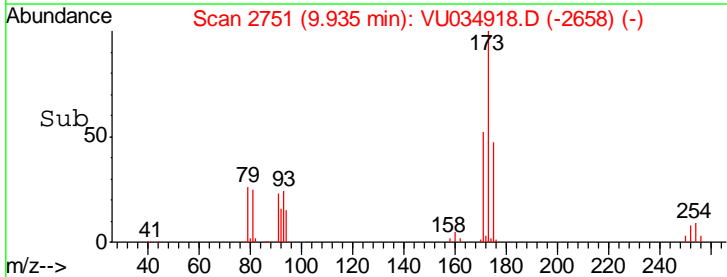
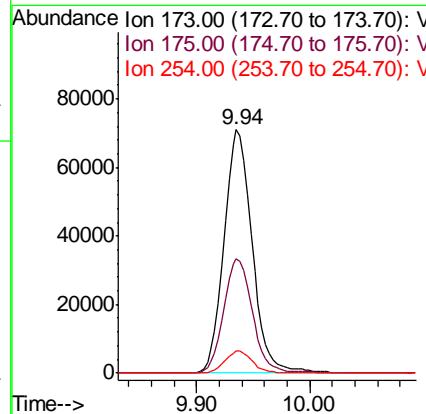
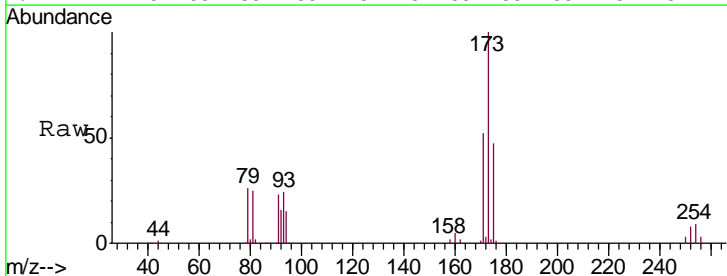
Instrument : MSVOA\_U  
 ClientSampled : DBAC4

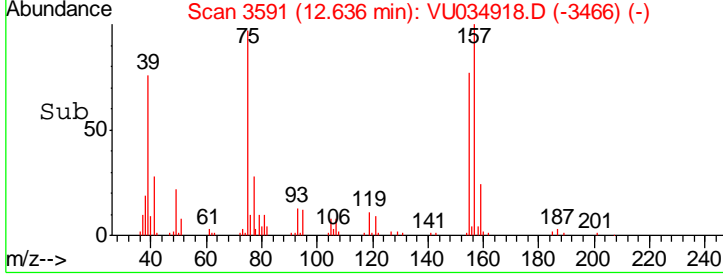
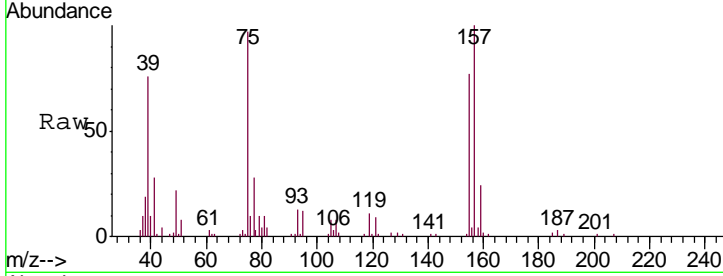
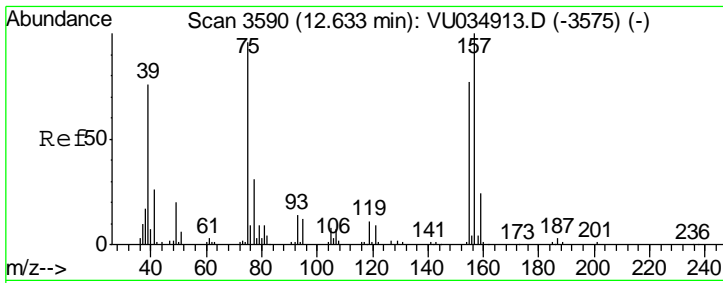
Tgt Ion	Resp	Lower	Upper
83	210857		
85	64.9	45.1	83.9
131	9.0	7.4	11.2



#61  
 Bromoform  
 Concen: 61.929 ug/L  
 RT: 9.94 min Scan# 2751  
 Delta R.T. -0.00 min  
 Lab File: VU034918.D  
 Acq: 03 Oct 2019 16:51

Tgt Ion	Resp	Lower	Upper
173	123066		
175	47.9	38.6	57.8
254	8.7	6.9	10.3





#66  
 1,2-Dibromo-3-chloropropane  
 Concen: 41.312 ug/L  
 RT: 12.64 min Scan# 3591  
 Delta R.T. 0.00 min  
 Lab File: VU034918.D  
 Acq: 03 Oct 2019 16:51

Instrument : MSVOA\_U  
 ClientSampled : DBAC4

Tgt Ion: 75 Resp: 36869

Ion	Ratio	Lower	Upper
75	100		
155	79.4	64.2	96.2
157	103.2	83.0	124.4

