

Data Path : Z:\VOASRV\HPCHEM1\MSVOA U\DATA\VU100320\
 Data File : VU040490.D
 Acq On : 03 Oct 2020 19:23
 Operator : SY/MD
 Sample : L4266-02
 Misc : 25.0mL/MSVOA U/WATER
 ALS Vial : 16 Sample Multiplier: 1

Instrument :
 MSVOA_U
 ClientSampled :
 BFA0

Integration Parameters: rteint.p
 Integrator: RTE
 Smoothing : ON
 Sampling : 1
 Start Thrs: 0.1
 Stop Thrs : 0

Filtering: 5
 Min Area: 3 % of largest Peak
 Max Peaks: 100
 Peak Location: TOP

If leading or trailing edge < 100 prefer < Baseline drop else tangent >
 Peak separation: 5

Method : Z:\VOASRV\HPCHEM1\MSVOA_U\METHOD\SOMUTR092920WMA.M
 Title : TRACE VOA SOM01.0

Signal : TIC

peak #	R.T. min	first scan	max scan	last scan	PK TY	peak height	corr. area	corr. % max.	% of total
1	1.366	3	8	17	rVB	72294	69388	4.16%	1.260%
2	1.527	52	58	70	rVB	37502	41161	2.47%	0.748%
3	1.607	73	83	92	rVV3	65889	84184	5.05%	1.529%
4	1.922	173	181	192	rBV	37673	48628	2.92%	0.883%
5	2.469	340	351	365	rVB	51090	85278	5.12%	1.549%
6	2.581	375	386	402	rBV	79756	130207	7.81%	2.365%
7	4.668	1017	1035	1075	rBV	57318	232078	13.92%	4.215%
8	5.083	1149	1164	1185	rBV	71062	160004	9.60%	2.906%
9	5.742	1344	1369	1387	rBV3	143337	377118	22.63%	6.850%
10	6.173	1490	1503	1516	rBV2	6815	16845	1.01%	0.306%
11	6.263	1517	1531	1548	rVB	162866	305957	18.36%	5.557%
12	6.555	1611	1622	1632	rBV3	16039	29366	1.76%	0.533%
13	6.703	1654	1668	1686	rVB	92264	182627	10.96%	3.317%
14	7.575	1924	1939	1958	rBV2	46326	83201	4.99%	1.511%
15	7.906	2029	2042	2058	rBV	164453	281680	16.90%	5.116%
16	8.185	2119	2129	2142	rBV2	31655	53073	3.18%	0.964%
17	8.558	2231	2245	2260	rBV	990681	1666630	100.00%	30.272%
18	8.642	2260	2271	2309	rVB	268857	531824	31.91%	9.660%
19	9.420	2501	2513	2532	rBV	237109	393460	23.61%	7.147%
20	10.754	2916	2928	2944	rBV	77655	125021	7.50%	2.271%
21	11.809	3244	3256	3275	rVB	210121	342404	20.54%	6.219%
22	12.188	3362	3374	3388	rBV	160102	265422	15.93%	4.821%

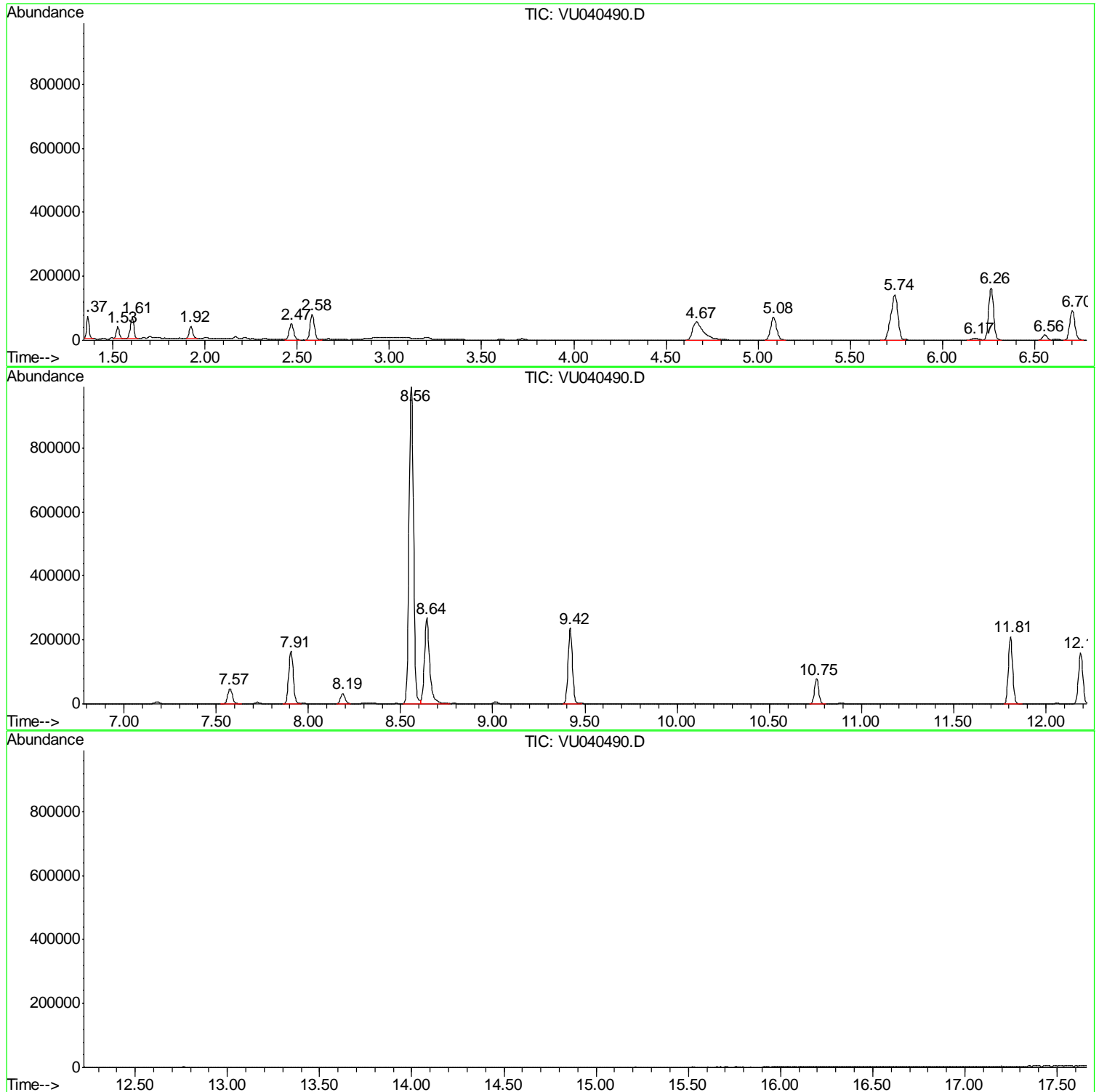
Sum of corrected areas: 5505556

Data Path : Z:\VOASRV\HPCHEM1\MSVOA U\DATA\VU100320\
Data File : VU040490.D
Acq On : 03 Oct 2020 19:23
Operator : SY/MD
Sample : L4266-02
Misc : 25.0mL/MSVOA U/WATER
ALS Vial : 16 Sample Multiplier: 1

Instrument :
MSVOA_U
ClientSampleId :
BFSAO

Quant Method : Z:\VOASRV\HPCHEM1\MSVOA_U\METHOD\SOMUTR092920WMA.M
Quant Title : TRACE VOA SOM01.0

TIC Library : C:\DATABASE\NIST11.L
TIC Integration Parameters: LSCINT.P



Data Path : Z:\VOASRV\HPCHEM1\MSVOA U\DATA\VU100320\
 Data File : VU040490.D
 Acq On : 03 Oct 2020 19:23
 Operator : SY/MD
 Sample : L4266-02
 Misc : 25.0mL/MSVOA U/WATER
 ALS Vial : 16 Sample Multiplier: 1

Instrument :
 MSVOA_U
 ClientSampleID :
 BFA0

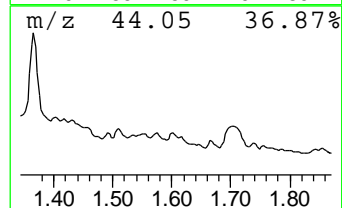
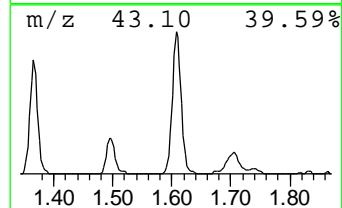
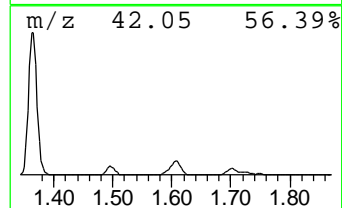
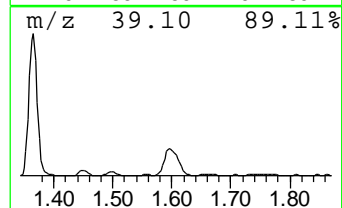
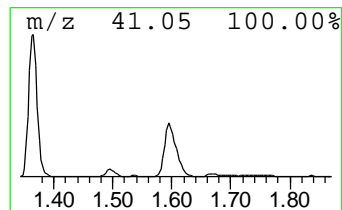
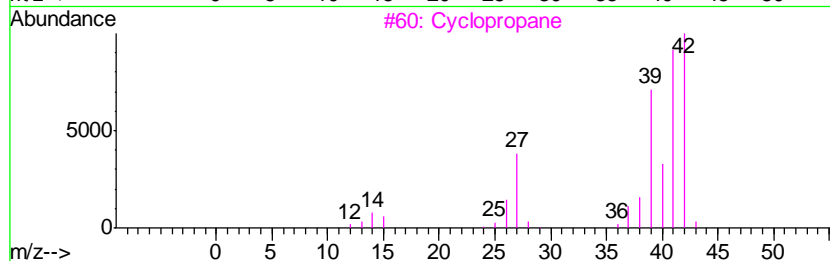
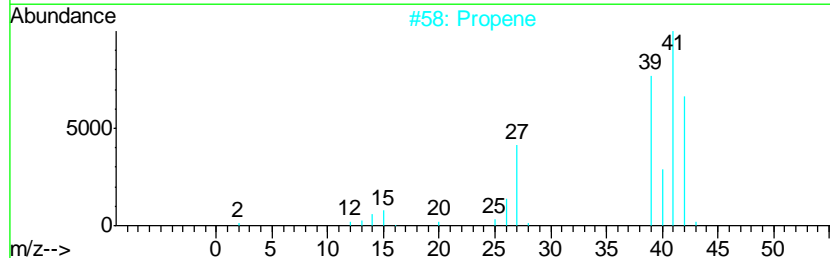
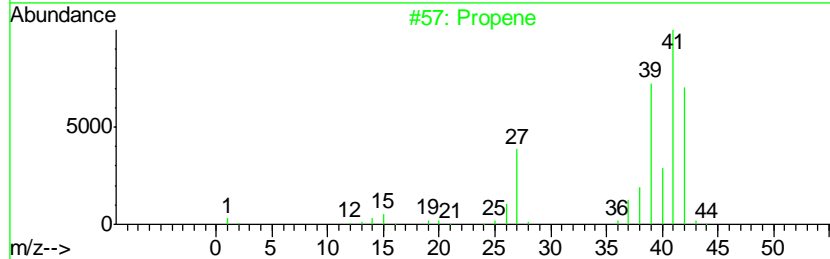
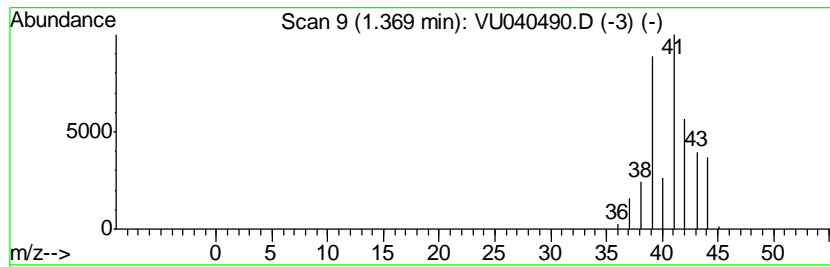
Quant Method : Z:\VOASRV\HPCHEM1\MSVOA_U\METHOD\SOMUTR092920WMA.M
 Quant Title : TRACE VOA SOM01.0

TIC Library : C:\DATABASE\NIST11.L
 TIC Integration Parameters: LSCINT.P

 Peak Number 1 (DEL) Alkane: Straight-Chai... Concentration Rank 3

R.T.	EstConc	Area	Relative to ISTD	R.T.
1.37	1.13 ug/L	69388	1,4-Difluorobenzene	6.26

Hit#	of	Tentative ID	MW	MolForm	CAS#	Qual
1	5	Propene	42	C3H6	000115-07-1	83
2		Propene	42	C3H6	000115-07-1	42
3		Cyclopropane	42	C3H6	000075-19-4	40
4		Cyclopropene	40	C3H4	002781-85-3	5
5		Cyclopropane	42	C3H6	000075-19-4	4



Data Path : Z:\VOASRV\HPCHEM1\MSVOA U\DATA\VU100320\
 Data File : VU040490.D
 Acq On : 03 Oct 2020 19:23
 Operator : SY/MD
 Sample : L4266-02
 Misc : 25.0mL/MSVOA U/WATER
 ALS Vial : 16 Sample Multiplier: 1

Instrument :
 MSVOA_U
 ClientSampleID :
 BFA0

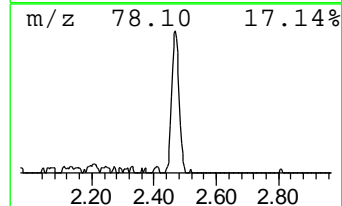
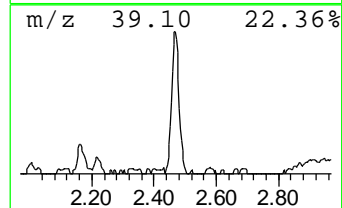
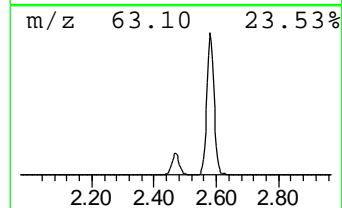
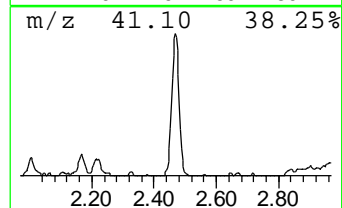
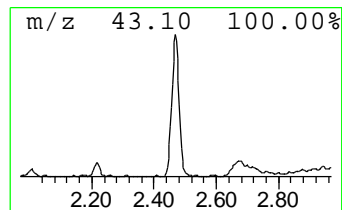
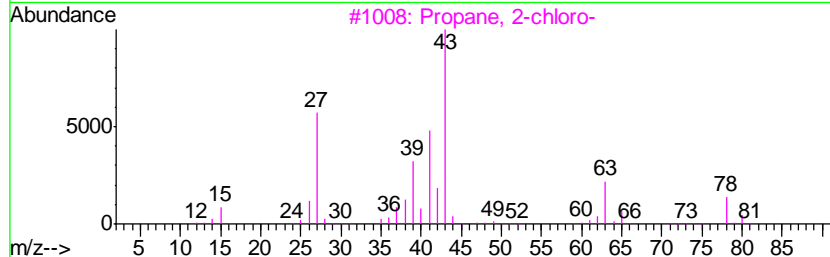
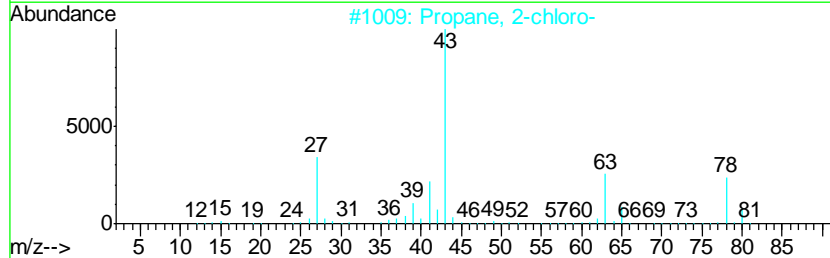
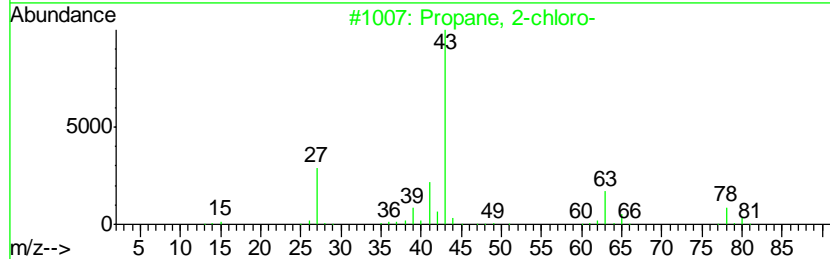
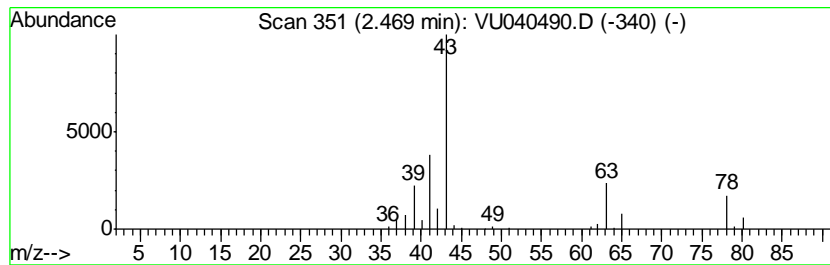
Quant Method : Z:\VOASRV\HPCHEM1\MSVOA_U\METHOD\SOMUTR092920WMA.M
 Quant Title : TRACE VOA SOM01.0

TIC Library : C:\DATABASE\NIST11.L
 TIC Integration Parameters: LSCINT.P

 Peak Number 2 Propane, 2-chloro- Concentration Rank 1

R.T.	EstConc	Area	Relative to ISTD	R.T.
2.47	1.39 ug/L	85278	1,4-Difluorobenzene	6.26

Hit#	of	Tentative ID	MW	MolForm	CAS#	Qual
1	5	Propane, 2-chloro-	78	C3H7Cl	000075-29-6	78
2		Propane, 2-chloro-	78	C3H7Cl	000075-29-6	38
3		Propane, 2-chloro-	78	C3H7Cl	000075-29-6	36
4		2-Chloroethanol	80	C2H5ClO	000107-07-3	4
5		Isobutyl chloroformate	136	C5H9ClO2	000543-27-1	4



Data Path : Z:\VOASRV\HPCHEM1\MSVOA_U\DATA\VU100320\
Data File : VU040490.D
Acq On : 03 Oct 2020 19:23
Operator : SY/MD
Sample : L4266-02
Misc : 25.0mL/MSVOA_U/WATER
ALS Vial : 16 Sample Multiplier: 1

Instrument :
MSVOA_U
ClientSampleId :
BFS00

Quant Method : Z:\VOASRV\HPCHEM1\MSVOA_U\METHOD\SOMUTR092920WMA.M
Quant Title : TRACE VOA SOM01.0

TIC Library : C:\DATABASE\NIST11.L
TIC Integration Parameters: LSCINT.P

TIC Top Hit name	RT	EstConc	Units	Response	--Internal Standard--			
					#	RT	Resp	Conc
(DEL) Alkane: Str...	1.37	1.1	ug/L	69388	1	6.26	305957	5.0
Propane, 2-chloro-	2.47	1.4	ug/L	85278	1	6.26	305957	5.0