

Data Path : Z:\voasrv\HPCHEM1\MSVOA_U\Data\VU100323\
 Data File : VU055637.D
 Acq On : 03 Oct 2023 13:41
 Operator : MD/SY
 Sample : 04679-14DL 100X
 Misc : 25.0mL/MSVOA_U/WATER
 ALS Vial : 10 Sample Multiplier: 1

Instrument :
 MSVOA_U
 ClientSampleId :
 PMW-8S(20230928)DL

Integration Parameters: rteint.p
 Integrator: RTE
 Smoothing : ON Filtering: 5
 Sampling : 1 Min Area: 3 % of largest Peak
 Start Thrs: 0.1 Max Peaks: 100
 Stop Thrs : 0 Peak Location: TOP

If leading or trailing edge < 100 prefer < Baseline drop else tangent >
 Peak separation: 5

Method : Z:\voasrv\HPCHEM1\MSVOA_U\Method\SFAMUTR091923WMA.M
 Title : TRACE VOA SFAM1.0

Signal : TIC: VU055637.D\data.ms

peak #	R.T. min	first scan	max scan	last scan	PK TY	peak height	corr. area	corr. % max.	% of total
1	1.599	88	96	111	rVB	125675	146271	14.39%	2.202%
2	1.914	185	194	206	rVB	106260	134273	13.21%	2.022%
3	2.567	384	397	412	rBV	178714	291366	28.66%	4.387%
4	3.042	534	545	560	rBV2	21191	38986	3.84%	0.587%
5	3.184	572	589	606	rBV2	15550	36558	3.60%	0.550%
6	3.866	791	801	816	rVB3	6059	14717	1.45%	0.222%
7	4.631	1023	1039	1042	rBV2	89981	158141	15.56%	2.381%
8	5.058	1159	1172	1196	rVB2	145574	331784	32.64%	4.996%
9	5.724	1358	1379	1409	rBV2	295099	774427	76.19%	11.660%
10	6.248	1528	1542	1567	rBV	217934	430557	42.36%	6.483%
11	6.531	1621	1630	1639	rBV5	5119	10337	1.02%	0.156%
12	6.689	1665	1679	1699	rBV	173275	348848	34.32%	5.252%
13	7.563	1939	1951	1970	rBV	84046	155492	15.30%	2.341%
14	7.898	2041	2055	2074	rBV	353041	630926	62.07%	9.500%
15	8.180	2132	2143	2164	rBV	47444	86193	8.48%	1.298%
16	8.634	2273	2284	2316	rBV3	224343	561729	55.26%	8.458%
17	9.415	2514	2527	2550	rBV	334799	623607	61.35%	9.389%
18	10.753	2932	2943	2961	rBV	115086	192638	18.95%	2.900%
19	10.891	2969	2986	3001	rBV3	6957	13154	1.29%	0.198%
20	11.746	3240	3252	3261	rBV3	45178	71074	6.99%	1.070%
21	11.811	3261	3272	3299	rVB2	392366	1016495	100.00%	15.305%
22	12.190	3377	3390	3408	rBV	320934	536948	52.82%	8.085%
23	13.846	3894	3905	3920	rBV3	21212	37129	3.65%	0.559%

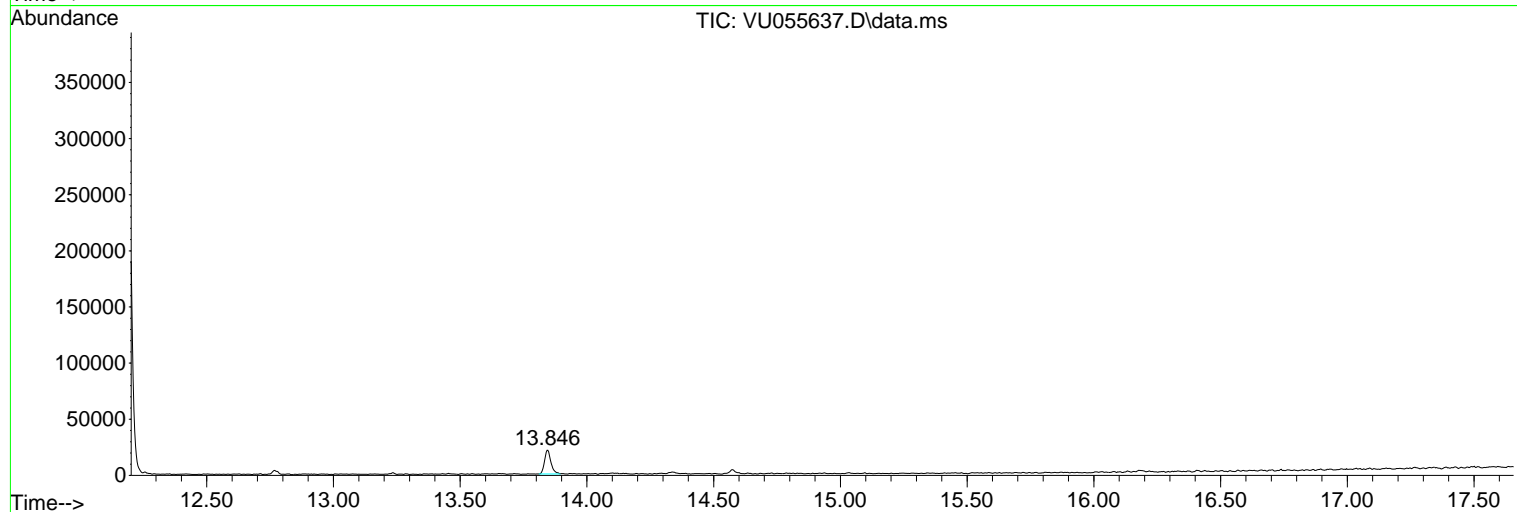
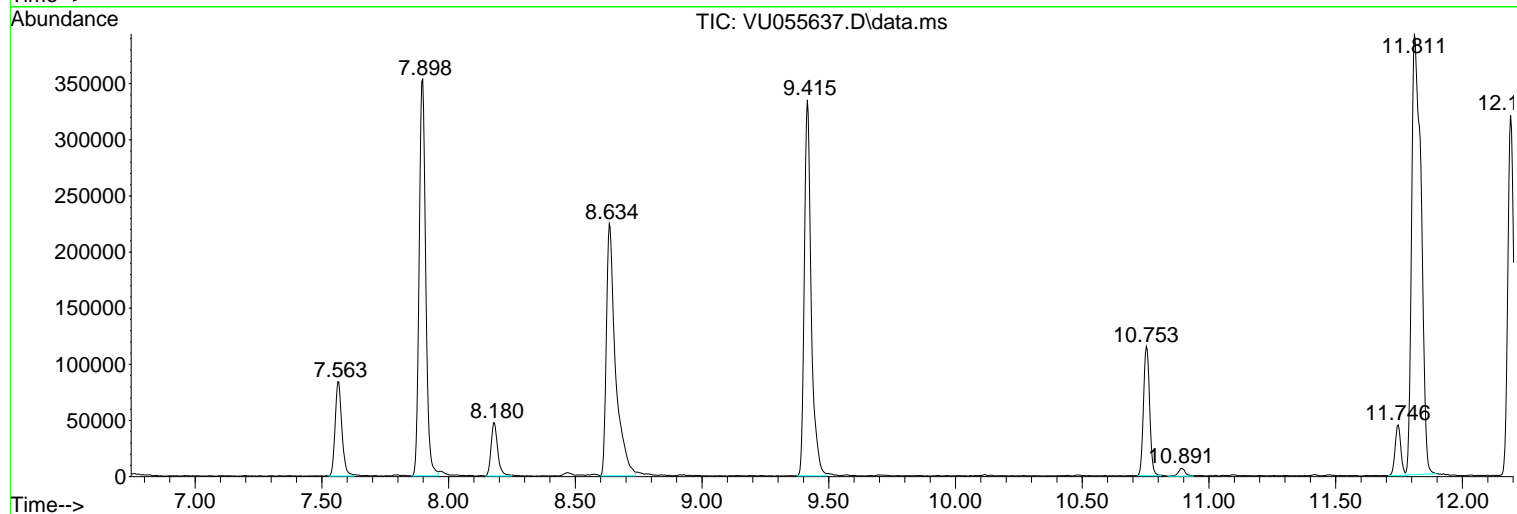
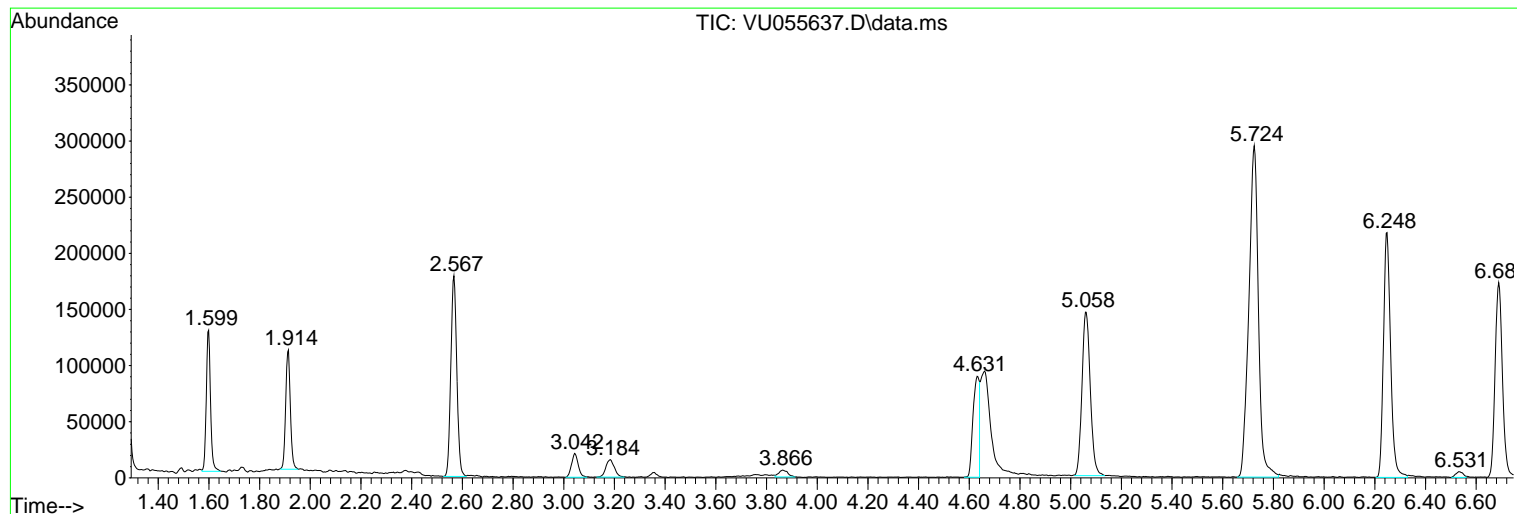
Sum of corrected areas: 6641650

Data Path : Z:\voasrv\HPCHEM1\MSVOA_U\Data\VU100323\
Data File : VU055637.D
Acq On : 03 Oct 2023 13:41
Operator : MD/SY
Sample : 04679-14DL 100X
Misc : 25.0mL/MSVOA_U/WATER
ALS Vial : 10 Sample Multiplier: 1

Instrument :
MSVOA_U
ClientSampleId :
PMW-8S(20230928)DL

Quant Method : Z:\voasrv\HPCHEM1\MSVOA_U\Method\SFAMUTR091923WMA.M
Quant Title : TRACE VOA SFAM1.0

TIC Library : C:\Database\NIST20.L
TIC Integration Parameters: LSCINT.P



Library Search Compound Report

Data Path : Z:\voasrv\HPCHEM1\MSVOA_U\Data\VU100323\
Data File : VU055637.D
Acq On : 03 Oct 2023 13:41
Operator : MD/SY
Sample : 04679-14DL 100X
Misc : 25.0mL/MSVOA_U/WATER
ALS Vial : 10 Sample Multiplier: 1

Instrument :
MSVOA_U
ClientSampleId :
PMW-8S(20230928)DL

Quant Method : Z:\voasrv\HPCHEM1\MSVOA_U\Method\SFAMUTR091923WMA.M
Quant Title : TRACE VOA SFAM1.0

TIC Library : C:\Database\NIST20.L
TIC Integration Parameters: LSCINT.P

No Library Search Compounds Detected

Data Path : Z:\voasrv\HPCHEM1\MSVOA_U\Data\VU100323\
Data File : VU055637.D
Acq On : 03 Oct 2023 13:41
Operator : MD/SY
Sample : 04679-14DL 100X
Misc : 25.0mL/MSVOA_U/WATER
ALS Vial : 10 Sample Multiplier: 1

Instrument :
MSVOA_U
ClientSampleId :
PMW-8S(20230928)DL

Quant Method : Z:\voasrv\HPCHEM1\MSVOA_U\Method\SFAMUTR091923WMA.M
Quant Title : TRACE VOA SFAM1.0

TIC Library : C:\Database\NIST20.L
TIC Integration Parameters: LSCINT.P

TIC Top Hit name	RT	EstConc	Units	Response	--Internal Standard--		
					#	RT	Resp Conc
