

Data Path : Z:\voasrv\HPCHEM1\MSVOA_U\Data\VU100323\
 Data File : VU055647.D
 Acq On : 03 Oct 2023 18:10
 Operator : MD/SY
 Sample : 04679-09DL 4X
 Misc : 25.0mL/MSVOA_U/WATER
 ALS Vial : 21 Sample Multiplier: 1

Instrument :
 MSVOA_U
 ClientSampleId :
 PMW-3(2030927)DL

Integration Parameters: rteint.p
 Integrator: RTE
 Smoothing : ON
 Sampling : 1
 Start Thrs : 0.1
 Stop Thrs : 0
 Filtering: 5
 Min Area: 3 % of largest Peak
 Max Peaks: 100
 Peak Location: TOP

If leading or trailing edge < 100 prefer < Baseline drop else tangent >
 Peak separation: 5

Method : Z:\voasrv\HPCHEM1\MSVOA_U\Method\SFAMUTR091923WMA.M
 Title : TRACE VOA SFAM1.0

Signal : TIC: VU055647.D\data.ms

peak #	R.T. min	first scan	max scan	last scan	PK TY	peak height	corr. area	corr. % max.	% of total
1	1.489	56	62	67	rBV	23417	21208	2.60%	0.264%
2	1.599	87	96	106	rBV	146737	170535	20.92%	2.125%
3	1.911	186	193	210	rVB	104619	135775	16.65%	1.692%
4	2.370	325	336	351	rBV2	96686	162979	19.99%	2.031%
5	2.563	384	396	411	rBV	187052	309744	37.99%	3.860%
6	3.042	529	545	565	rBV	72615	143643	17.62%	1.790%
7	3.354	629	642	660	rBV3	13042	28233	3.46%	0.352%
8	3.866	784	801	828	rVB2	129493	314361	38.56%	3.918%
9	4.660	1026	1048	1091	rBV3	130427	502328	61.61%	6.260%
10	5.062	1156	1173	1196	rBV	159788	356725	43.75%	4.446%
11	5.724	1358	1379	1391	rBV2	313385	815294	100.00%	10.160%
12	6.248	1526	1542	1558	rBV	204265	398705	48.90%	4.969%
13	6.541	1622	1633	1646	rBV6	23710	50139	6.15%	0.625%
14	6.689	1664	1679	1696	rBV	186450	375459	46.05%	4.679%
15	7.563	1940	1951	1971	rBV	88556	165492	20.30%	2.062%
16	7.898	2041	2055	2072	rBV	376598	662969	81.32%	8.262%
17	7.962	2072	2075	2091	rVB5	6310	11589	1.42%	0.144%
18	8.180	2129	2143	2159	rBV2	51367	94299	11.57%	1.175%
19	8.470	2220	2233	2241	rBV3	4944	9507	1.17%	0.118%
20	8.553	2250	2259	2272	rVB8	7725	15845	1.94%	0.197%
21	8.634	2272	2284	2315	rBV3	249779	618637	75.88%	7.710%
22	9.415	2515	2527	2568	rBV2	312375	704937	86.46%	8.785%
23	9.672	2598	2607	2630	rVB2	4992	13883	1.70%	0.173%
24	10.486	2850	2860	2871	rVB3	6609	9885	1.21%	0.123%
25	10.753	2930	2943	2957	rBV	128846	208191	25.54%	2.595%
26	10.891	2975	2986	2998	rBV4	10205	19489	2.39%	0.243%
27	11.640	3212	3219	3230	rVB2	9178	14603	1.79%	0.182%
28	11.749	3243	3253	3261	rBV2	13528	20716	2.54%	0.258%
29	11.811	3261	3272	3291	rVV	359695	625551	76.73%	7.796%
30	12.093	3346	3360	3374	rBV2	47862	77686	9.53%	0.968%
31	12.193	3378	3391	3410	rBV	354671	597750	73.32%	7.449%
32	12.611	3513	3521	3533	rVB4	12884	21244	2.61%	0.265%
33	12.682	3534	3543	3550	rBV2	13151	21139	2.59%	0.263%
34	12.862	3589	3599	3607	rBV3	8478	12370	1.52%	0.154%
35	13.029	3642	3651	3661	rVB3	9070	14366	1.76%	0.179%
36	13.106	3667	3675	3685	rBV6	5371	8644	1.06%	0.108%

Data Path : Z:\voasrv\HPCHEM1\MSVOA_U\Data\VU100323\
 Data File : VU055647.D
 Acq On : 03 Oct 2023 18:10
 Operator : MD/SY
 Sample : 04679-09DL 4X
 Misc : 25.0mL/MSVOA_U/WATER
 ALS Vial : 21 Sample Multiplier: 1

Instrument :
 MSVOA_U
 ClientSampleId :
 PMW-3(2030927)DL

Integration Parameters: rteint.p
 Integrator: RTE
 Smoothing : ON Filtering: 5
 Sampling : 1 Min Area: 3 % of largest Peak
 Start Thrs: 0.1 Max Peaks: 100
 Stop Thrs : 0 Peak Location: TOP

If leading or trailing edge < 100 prefer < Baseline drop else tangent >
 Peak separation: 5

Method : Z:\voasrv\HPCHEM1\MSVOA_U\Method\SFAMUTR091923WMA.M
 Title : TRACE VOA SFAM1.0

37	13.248	3706	3719	3728	rBV7	5722	12012	1.47%	0.150%
38	13.450	3772	3782	3797	rVV5	22409	38969	4.78%	0.486%
39	13.621	3828	3835	3846	rVB9	5197	9237	1.13%	0.115%
40	13.843	3894	3904	3911	rBV8	14661	25615	3.14%	0.319%
41	13.939	3928	3934	3947	rVB2	23627	38703	4.75%	0.482%
42	14.100	3976	3984	3998	rVB5	5018	12013	1.47%	0.150%
43	14.187	4003	4011	4020	rBV6	10722	16283	2.00%	0.203%
44	14.283	4027	4041	4051	rBV4	21949	39013	4.79%	0.486%
45	14.344	4053	4060	4071	rVB8	5787	10096	1.24%	0.126%
46	14.489	4096	4105	4109	rBV6	5919	9682	1.19%	0.121%
47	14.576	4123	4132	4142	rVV2	5364	8889	1.09%	0.111%
48	14.669	4150	4161	4177	rBV2	6822	18563	2.28%	0.231%
49	15.016	4261	4269	4281	rBV6	11839	20326	2.49%	0.253%
50	15.199	4317	4326	4330	rBV7	5831	8292	1.02%	0.103%
51	15.267	4341	4347	4356	rVB6	7686	12583	1.54%	0.157%
52	15.421	4387	4395	4403	rBV8	6426	10079	1.24%	0.126%

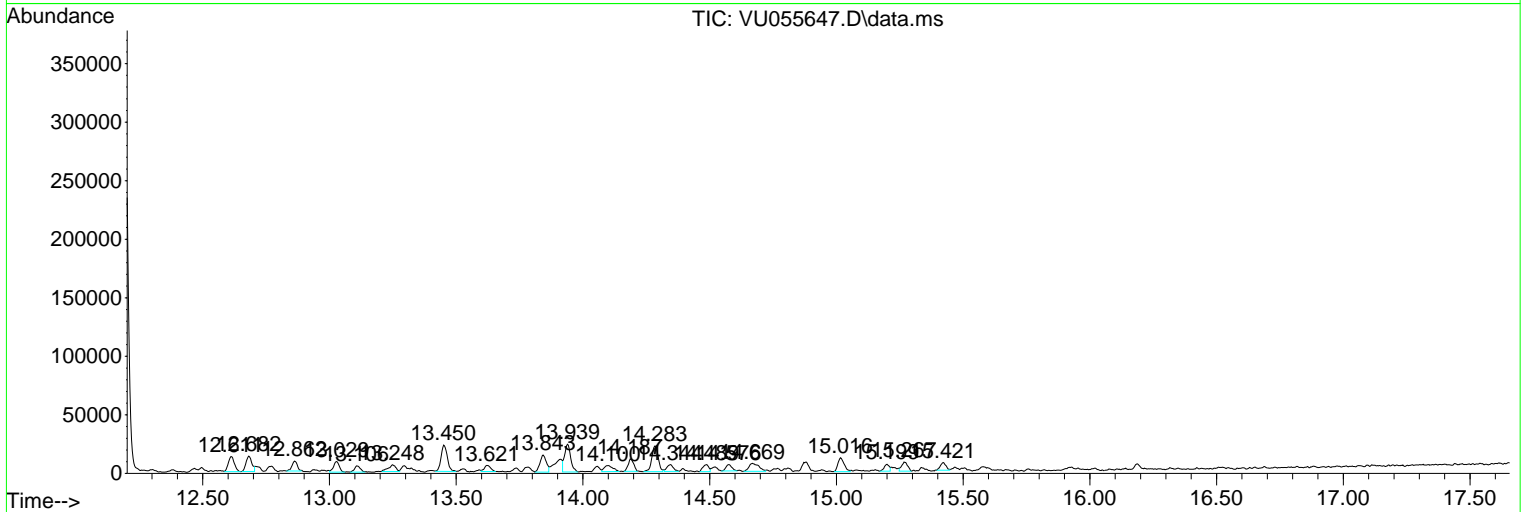
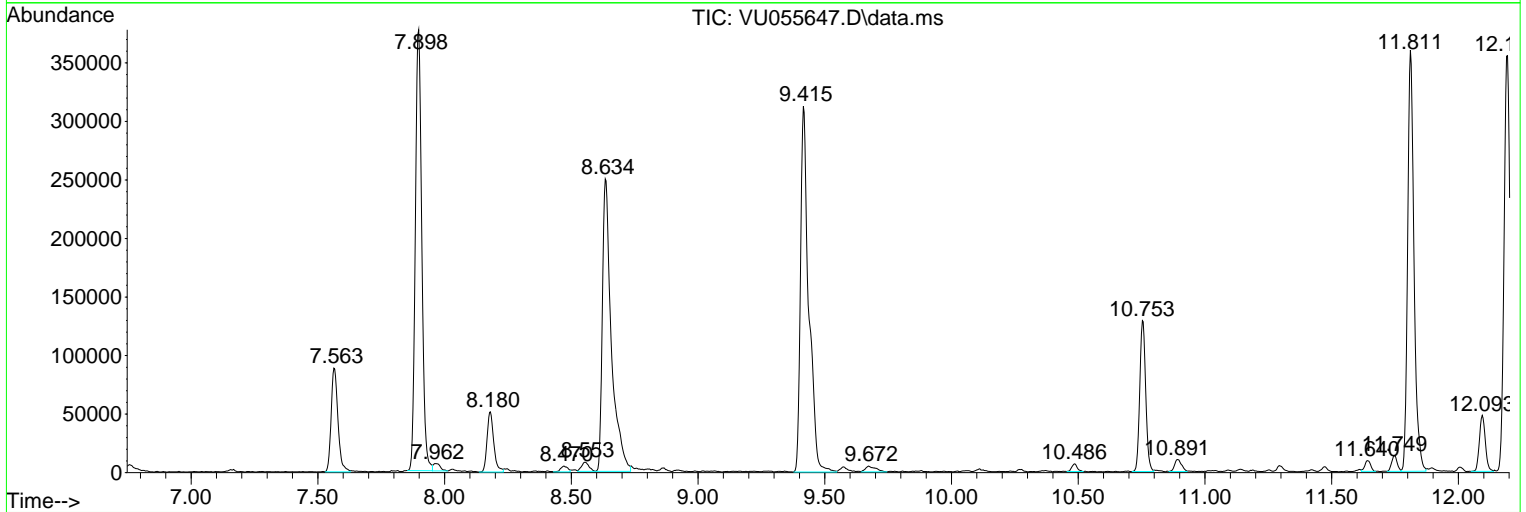
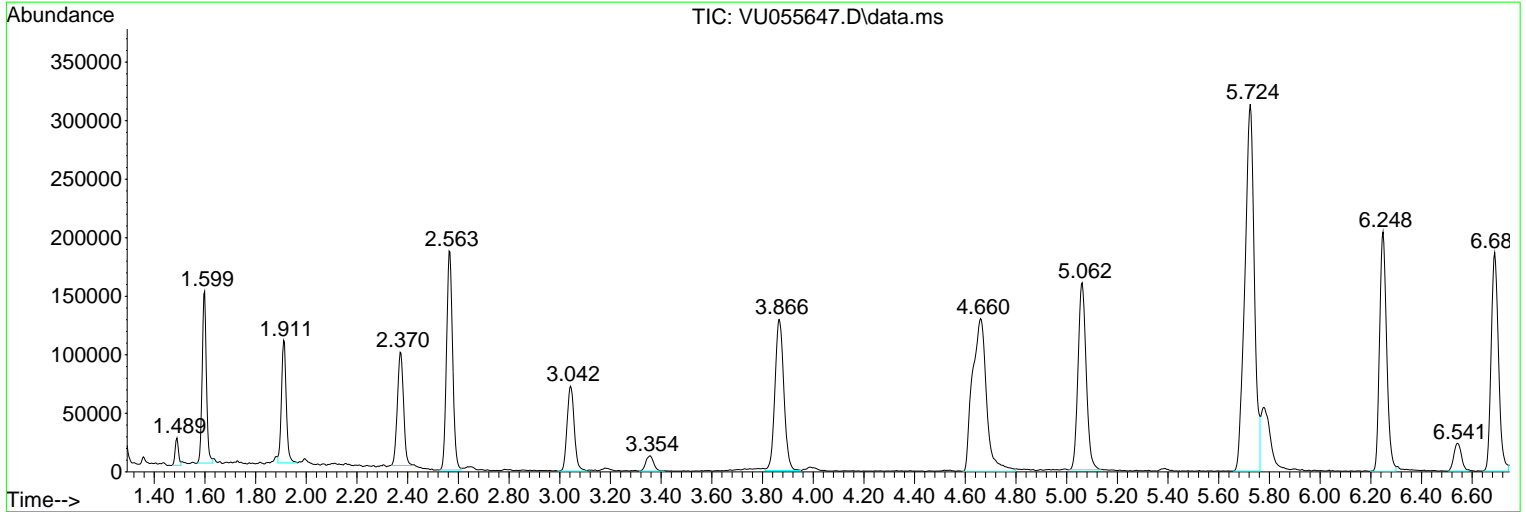
Sum of corrected areas: 8024275

Data Path : Z:\voasrv\HPCHEM1\MSVOA_U\Data\VU100323\
 Data File : VU055647.D
 Acq On : 03 Oct 2023 18:10
 Operator : MD/SY
 Sample : 04679-09DL 4X
 Misc : 25.0mL/MSVOA_U/WATER
 ALS Vial : 21 Sample Multiplier: 1

Instrument :
 MSVOA_U
 ClientSampleId :
 PMW-3(2030927)DL

Quant Method : Z:\voasrv\HPCHEM1\MSVOA_U\Method\SFAMUTR091923WMA.M
 Quant Title : TRACE VOA SFAM1.0

TIC Library : C:\Database\NIST20.L
 TIC Integration Parameters: LSCINT.P



Data Path : Z:\voasrv\HPCHEM1\MSVOA_U\Data\VU100323\
 Data File : VU055647.D
 Acq On : 03 Oct 2023 18:10
 Operator : MD/SY
 Sample : 04679-09DL 4X
 Misc : 25.0mL/MSVOA_U/WATER
 ALS Vial : 21 Sample Multiplier: 1

Instrument :
 MSVOA_U
 ClientSampleId :
 PMW-3(2030927)DL

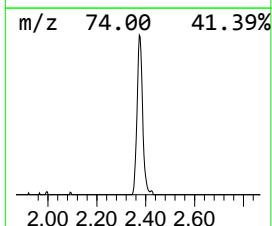
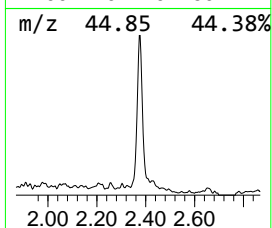
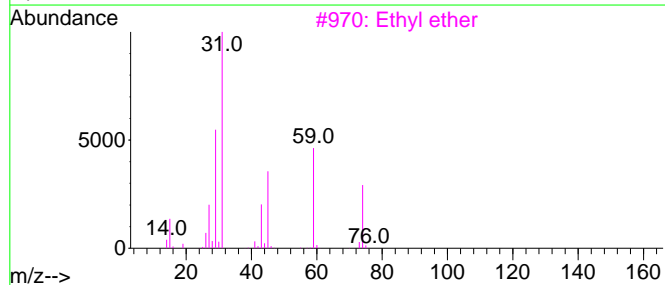
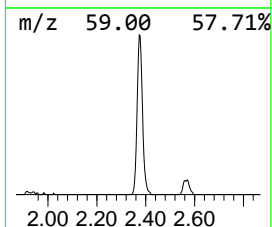
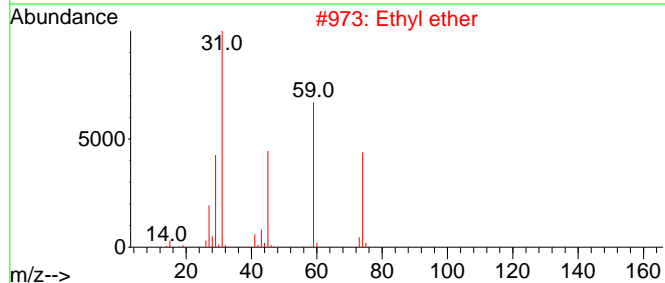
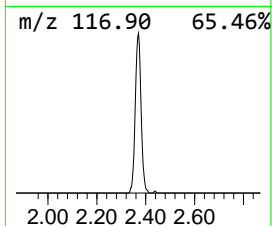
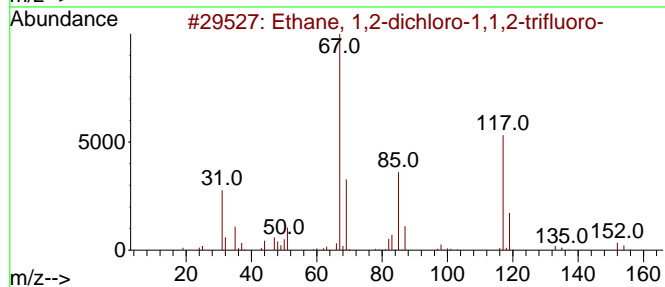
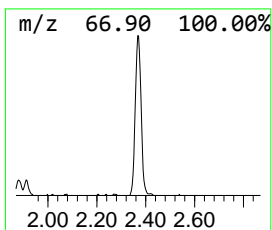
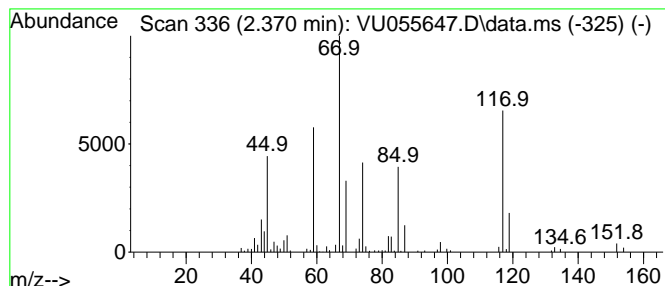
Quant Method : Z:\voasrv\HPCHEM1\MSVOA_U\Method\SFAMUTR091923WMA.M
 Quant Title : TRACE VOA SFAM1.0

TIC Library : C:\Database\NIST20.L
 TIC Integration Parameters: LSCINT.P

 Peak Number 1 Ethane, 1,2-dichloro-1,1,2-... Concentration Rank 2

R.T.	EstConc	Area	Relative to ISTD	R.T.
2.370	2.04 ug/L	162979	1,4-Difluorobenzene	6.248

Hit#	of 5	Tentative ID	MW	MolForm	CAS#	Qual
1		Ethane, 1,2-dichloro-1,1,2-trifl...	152	C2HC12F3	000354-23-4	60
2		Ethyl ether	74	C4H10O	000060-29-7	30
3		Ethyl ether	74	C4H10O	000060-29-7	27
4		Ethyl ether	74	C4H10O	000060-29-7	27
5		Ethyl ether	74	C4H10O	000060-29-7	27



Data Path : Z:\voasrv\HPCHEM1\MSVOA_U\Data\VU100323\
 Data File : VU055647.D
 Acq On : 03 Oct 2023 18:10
 Operator : MD/SY
 Sample : 04679-09DL 4X
 Misc : 25.0mL/MSVOA_U/WATER
 ALS Vial : 21 Sample Multiplier: 1

Instrument :
 MSVOA_U
 ClientSampleId :
 PMW-3(2030927)DL

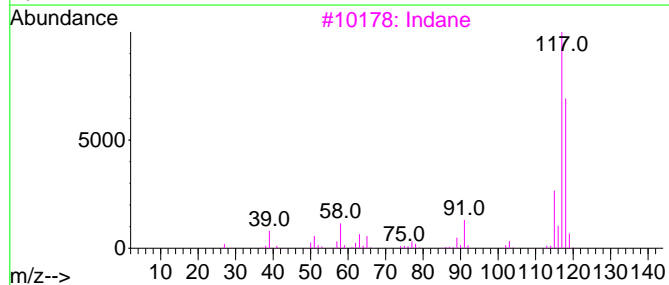
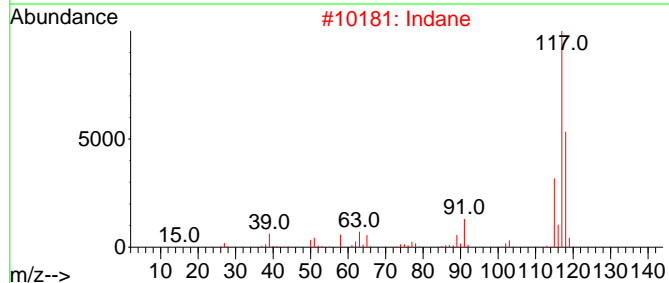
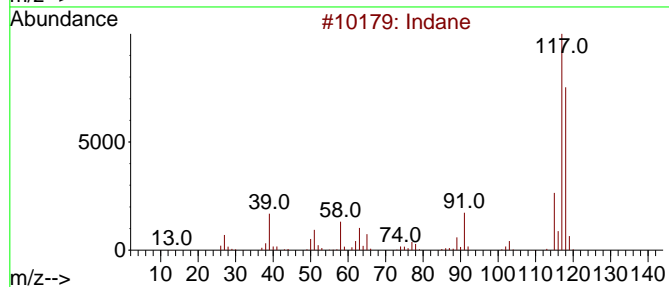
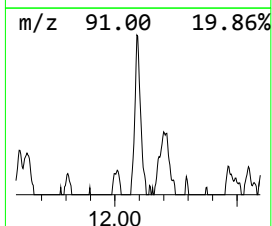
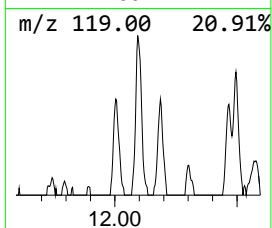
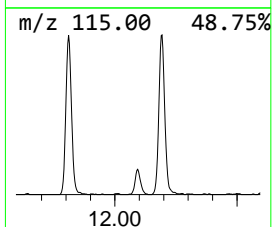
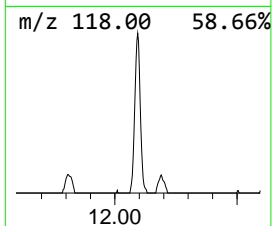
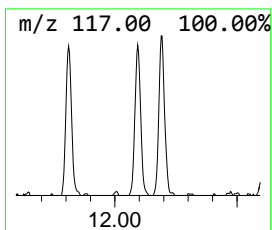
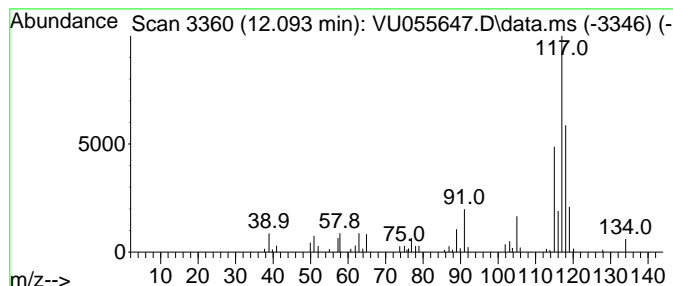
Quant Method : Z:\voasrv\HPCHEM1\MSVOA_U\Method\SFAMUTR091923WMA.M
 Quant Title : TRACE VOA SFAM1.0

TIC Library : C:\Database\NIST20.L
 TIC Integration Parameters: LSCINT.P

 Peak Number 3 Indane Concentration Rank 3

R.T.	EstConc	Area	Relative to ISTD	R.T.
12.094	0.62 ug/L	77686	1,4-Dichlorobenzene-d4	11.810

Hit#	of	5	Tentative ID	MW	MolForm	CAS#	Qual
1			Indane	118	C9H10	000496-11-7	64
2			Indane	118	C9H10	000496-11-7	64
3			Indane	118	C9H10	000496-11-7	64
4			(Z)-1-Phenylpropene	118	C9H10	000766-90-5	60
5			Benzene, cyclopropyl-	118	C9H10	000873-49-4	53



Data Path : Z:\voasrv\HPCHEM1\MSVOA_U\Data\VU100323\
Data File : VU055647.D
Acq On : 03 Oct 2023 18:10
Operator : MD/SY
Sample : 04679-09DL 4X
Misc : 25.0mL/MSVOA_U/WATER
ALS Vial : 21 Sample Multiplier: 1

Instrument :
MSVOA_U
ClientSampleId :
PMW-3(2030927)DL

Quant Method : Z:\voasrv\HPCHEM1\MSVOA_U\Method\SFAMUTR091923WMA.M
Quant Title : TRACE VOA SFAM1.0

TIC Library : C:\Database\NIST20.L
TIC Integration Parameters: LSCINT.P

TIC Top Hit name	RT	EstConc	Units	Response	--Internal Standard--			
					#	RT	Resp	Conc
Ethane, 1,2-dic...	2.370	2.0	ug/L	162979	1	6.248	398705	5.0
Indane	12.094	0.6	ug/L	77686	3	11.810	625551	5.0