

Data Path : Z:\VOASRV\HPCHEM1\MSVOA U\DATA\VU100418\
 Data File : VU027373.D
 Acq On : 03 Oct 2018 22:16
 Operator : MD/SY
 Sample : J5163-09
 Misc : 5.0mL/MSVOA U/WATER
 ALS Vial : 35 Sample Multiplier: 1

Instrument :
 MSVOA_U
 ClientSampleId :
 FIELD-BLANK

Integration Parameters: RTEINT.P
 Integrator: RTE
 Smoothing : ON Filtering: 5
 Sampling : 1 Min Area: 3 % of largest Peak
 Start Thrs: 0.2 Max Peaks: 100
 Stop Thrs : 0 Peak Location: TOP

If leading or trailing edge < 100 prefer < Baseline drop else tangent >
 Peak separation: 5

Method : Z:\VOASRV\HPCHEM1\MSVOA_U\METHOD\82U100118W.M
 Title : SW846 8260

Signal : TIC

peak #	R.T. min	first scan	max scan	last scan	PK TY	peak height	corr. area	corr. % max.	% of total
1	2.447	383	396	407	rBV2	7035	12586	1.91%	0.394%
2	4.199	928	941	960	rBV2	8866	23541	3.56%	0.736%
3	4.887	1138	1155	1171	rBV	96488	218319	33.05%	6.829%
4	4.987	1172	1186	1205	rVV	123573	270353	40.93%	8.456%
5	5.312	1272	1287	1311	rBV	120455	258199	39.09%	8.076%
6	5.890	1449	1467	1506	rBV	194724	399465	60.48%	12.495%
7	7.569	1975	1989	2012	rBV	367998	660514	100.00%	20.660%
8	8.183	2167	2180	2194	rBV	13169	28321	4.29%	0.886%
9	9.089	2450	2462	2487	rBV	281042	473795	71.73%	14.820%
10	10.308	2829	2841	2865	rBV	238846	383727	58.10%	12.003%
11	10.610	2923	2935	2949	rVB	11613	21416	3.24%	0.670%
12	11.485	3195	3207	3227	rBV	284115	446794	67.64%	13.975%

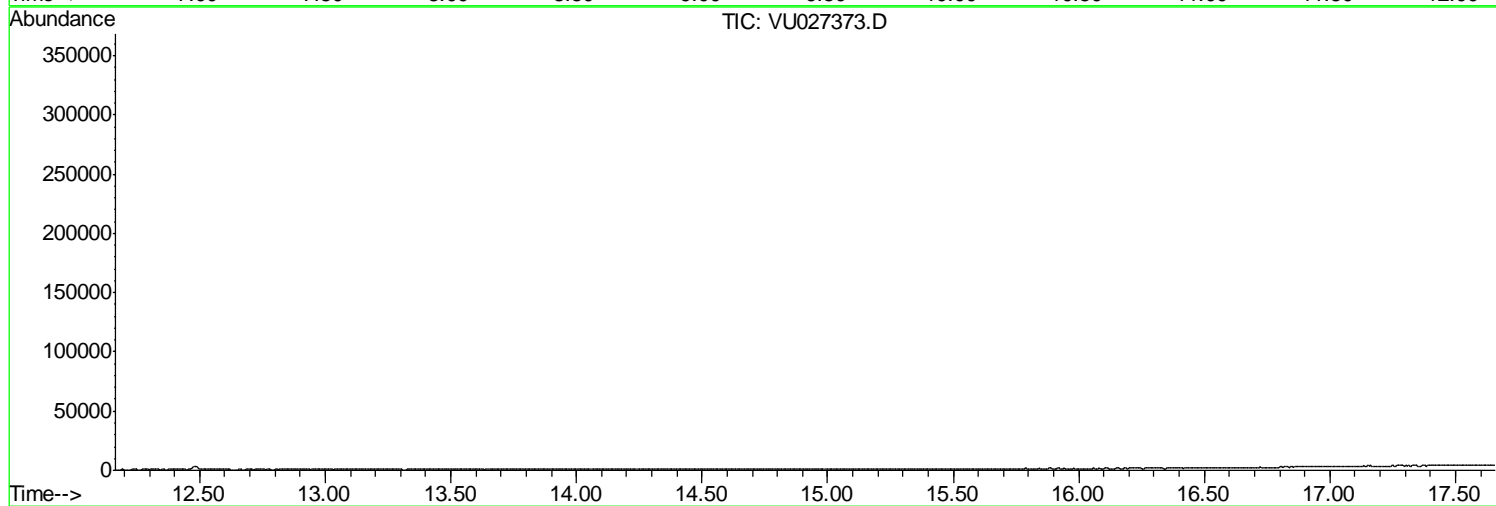
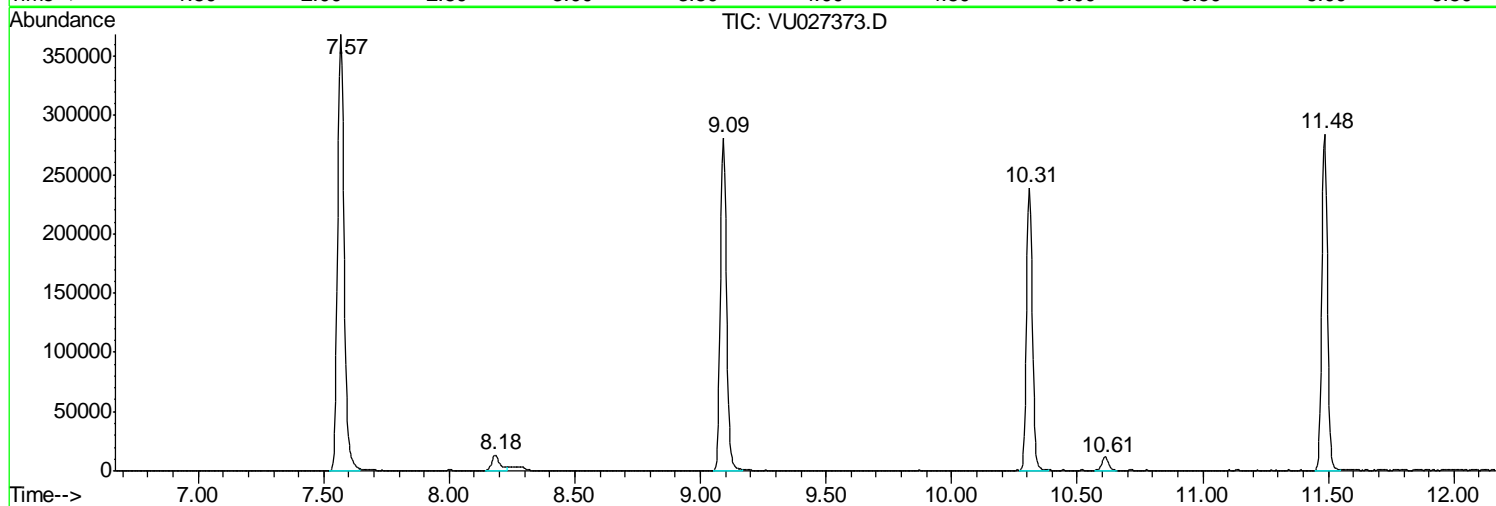
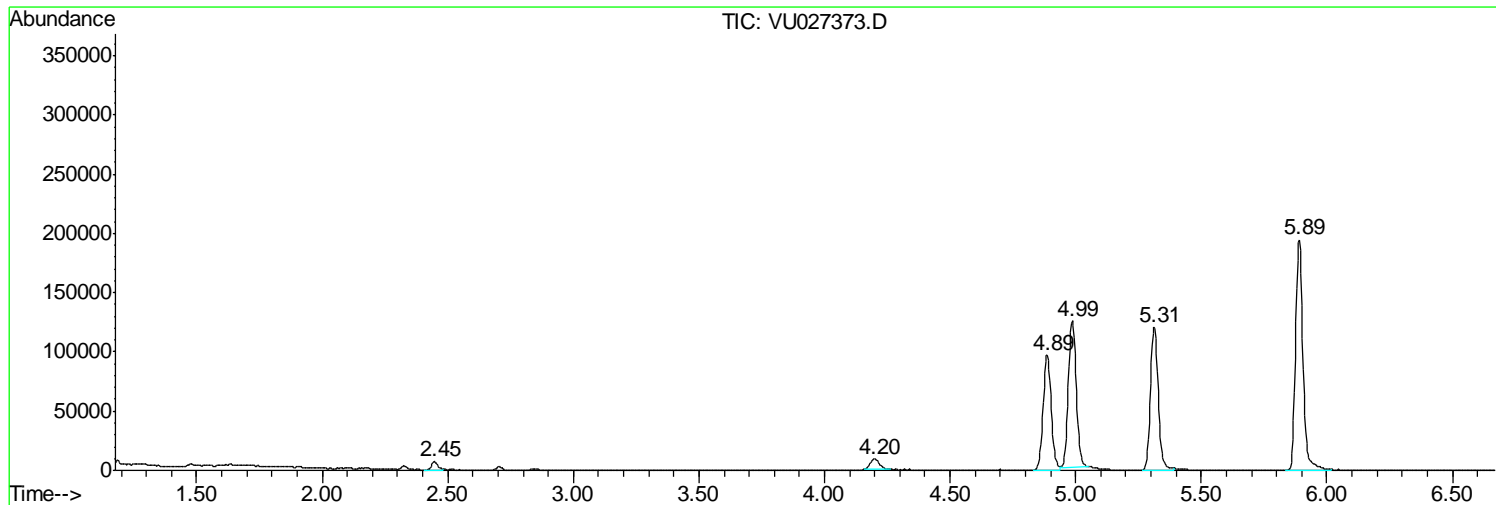
Sum of corrected areas: 3197030

Data Path : Z:\VOASRV\HPCHEM1\MSVOA U\DATA\VU100418\
Data File : VU027373.D
Acq On : 03 Oct 2018 22:16
Operator : MD/SY
Sample : J5163-09
Misc : 5.0mL/MSVOA U/WATER
ALS Vial : 35 Sample Multiplier: 1

Instrument :
MSVOA_U
ClientSampled :
FIELD-BLANK

Quant Method : Z:\VOASRV\HPCHEM1\MSVOA_U\METHOD\82U100118W.M
Quant Title : SW846 8260

TIC Library : C:\DATABASE\NIST11.L
TIC Integration Parameters: LSCINT.P



Data Path : Z:\VOASRV\HPCHEM1\MSVOA_U\DATA\VU100418\
Data File : VU027373.D
Acq On : 03 Oct 2018 22:16
Operator : MD/SY
Sample : J5163-09
Misc : 5.0mL/MSVOA_U/WATER
ALS Vial : 35 Sample Multiplier: 1

Instrument :
MSVOA_U
ClientSampleId :
FIELD-BLANK

Quant Method : Z:\VOASRV\HPCHEM1\MSVOA_U\METHOD\82U100118W.M
Quant Title : SW846 8260

TIC Library : C:\DATABASE\NIST11.L
TIC Integration Parameters: LSCINT.P

No Library Search Compounds Detected

Data Path : Z:\VOASRV\HPCHEM1\MSVOA_U\DATA\VU100418\
Data File : VU027373.D
Acq On : 03 Oct 2018 22:16
Operator : MD/SY
Sample : J5163-09
Misc : 5.0mL/MSVOA_U/WATER
ALS Vial : 35 Sample Multiplier: 1

Instrument :
MSVOA_U
ClientSampleId :
FIELD-BLANK

Quant Method : Z:\VOASRV\HPCHEM1\MSVOA_U\METHOD\82U100118W.M
Quant Title : SW846 8260

TIC Library : C:\DATABASE\NIST11.L
TIC Integration Parameters: LSCINT.P

TIC Top Hit name	RT	EstConc	Units	Response	--Internal Standard--			
					#	RT	Resp	Conc
