

Data File : VU034940.D
 Acq On : 04 Oct 2019 17:14
 Operator : JC/SP
 Sample : K5201-05
 Misc : 25.0mL/MSVOA_U/WATER
 ALS Vial : 18 Sample Multiplier: 1

Instrument :
 MSVOA_U
 ClientSampleId :
 C0AB9

Quant Time: Oct 05 00:35:01 2019
 Quant Method : Z:\VOASRV\HPCHEM1\MSVOA_U\METHOD\SOMUTR093019WMA.M
 Quant Title : TRACE VOA SOM01.0
 QLast Update : Sat Oct 05 00:29:19 2019
 Response via : Initial Calibration

Internal Standards	R.T.	QIon	Response	Conc	Units	Dev(Min)
1) 1,4-Difluorobenzene	5.86	114	194182	5.00	ug/L	0.00
28) Chlorobenzene-d5	9.07	117	194132	5.00	ug/L	0.00
60) 1,4-Dichlorobenzene-d4	11.46	152	79957	5.00	ug/L	0.00

System Monitoring Compounds

4) Vinyl Chloride-d3	1.40	65	69943	5.09	ug/L	0.00
Spiked Amount	5.000	Range	40 - 130	Recovery	=	101.80%
7) Chloroethane-d5	1.68	69	58805	5.24	ug/L	0.00
Spiked Amount	5.000	Range	65 - 130	Recovery	=	104.80%
11) 1,1-Dichloroethene-d2	2.26	63	94299	4.00	ug/L	0.00
Spiked Amount	5.000	Range	60 - 125	Recovery	=	80.00%
20) 2-Butanone-d5	4.17	46	167530	42.81	ug/L	-0.02
Spiked Amount	50.000	Range	40 - 130	Recovery	=	85.62%
24) Chloroform-d	4.62	84	119026	5.12	ug/L	0.00
Spiked Amount	5.000	Range	70 - 125	Recovery	=	102.40%
26) 1,2-Dichloroethane-d4	5.29	65	65801	4.55	ug/L	0.00
Spiked Amount	5.000	Range	70 - 130	Recovery	=	91.00%
32) Benzene-d6	5.32	84	244410	5.11	ug/L	0.00
Spiked Amount	5.000	Range	70 - 125	Recovery	=	102.20%
36) 1,2-Dichloropropane-d6	6.31	67	82261	5.15	ug/L	0.00
Spiked Amount	5.000	Range	60 - 140	Recovery	=	103.00%
41) Toluene-d8	7.54	98	223198	4.85	ug/L	0.00
Spiked Amount	5.000	Range	70 - 130	Recovery	=	97.00%
43) trans-1,3-Dichloropropene-	7.84	79	24547	4.17	ug/L	0.00
Spiked Amount	5.000	Range	55 - 130	Recovery	=	83.40%
46) 2-Hexanone-d5	8.30	63	129004	44.44	ug/L	0.00
Spiked Amount	50.000	Range	45 - 130	Recovery	=	88.88%
57) 1,1,2,2-Tetrachloroethane-	10.41	84	62944	4.94	ug/L	0.00
Spiked Amount	5.000	Range	65 - 120	Recovery	=	98.80%
64) 1,2-Dichlorobenzene-d4	11.84	152	77751	5.86	ug/L	0.00
Spiked Amount	5.000	Range	80 - 120	Recovery	=	117.20%

Target Compounds

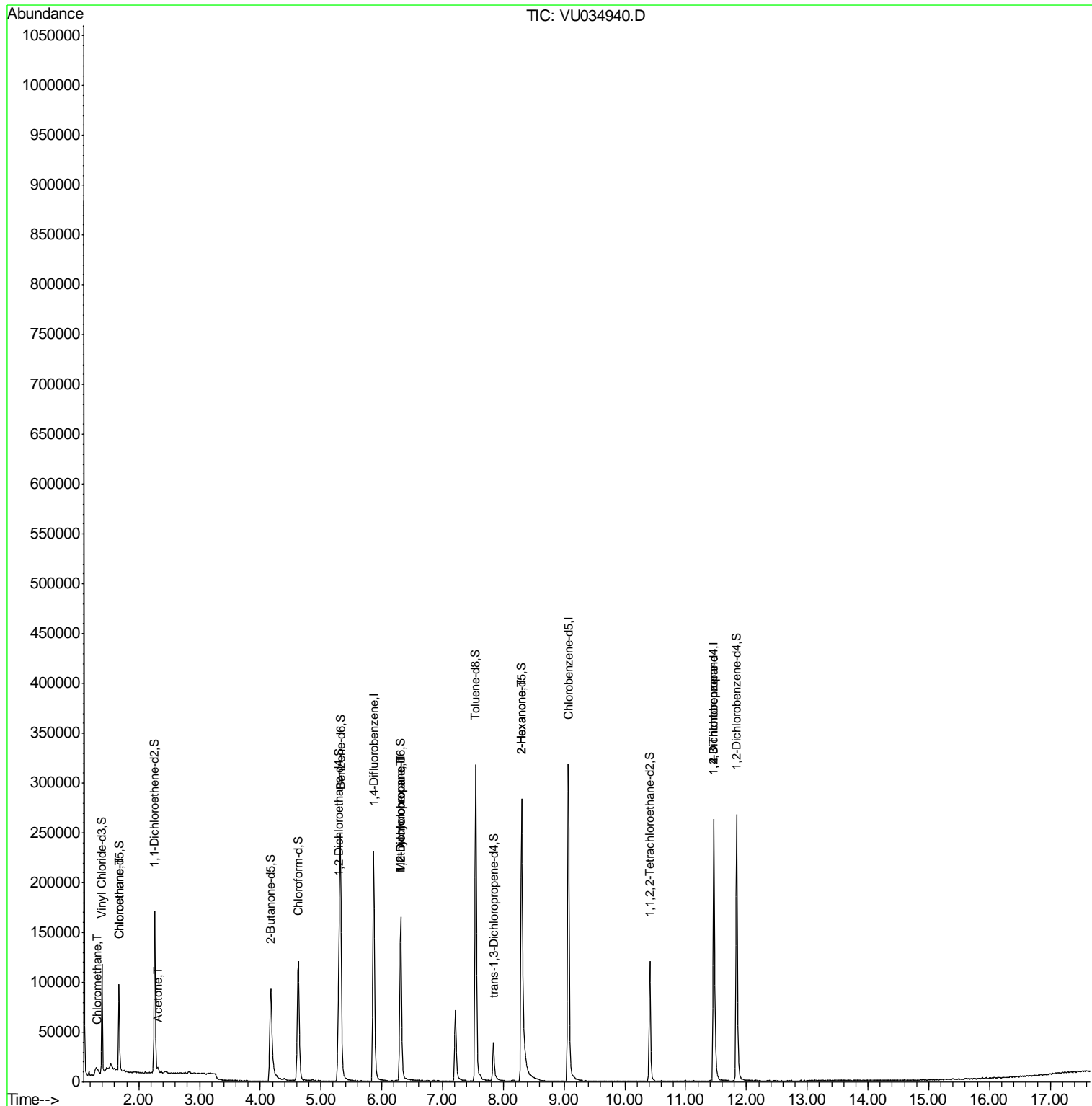
						Qvalue
3) Chloromethane	1.32	50	1526	0.163	ug/L	90
8) Chloroethane	1.69	64	476	0.082	ug/L #	54
13) Acetone	2.31	43	4811	1.680	ug/L	90
35) Methylcyclohexane	6.31	83	17852	1.386	ug/L #	15
37) 1,2-Dichloropropane	6.31	63	9278	0.697	ug/L #	90
48) 2-Hexanone	8.30	43	15150	1.978	ug/L #	72
59) 1,2,3-Trichloropropane	11.46	75	9904	1.040	ug/L	92

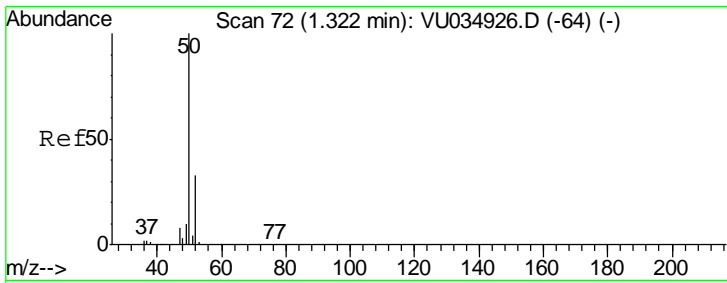
(#) = qualifier out of range (m) = manual integration (+) = signals summed

Data File : VU034940.D
Acq On : 04 Oct 2019 17:14
Operator : JC/SP
Sample : K5201-05
Misc : 25.0mL/MSVOA_U/WATER
ALS Vial : 18 Sample Multiplier: 1

Instrument :
MSVOA_U
ClientSampleId :
C0AB9

Quant Time: Oct 05 00:35:01 2019
Quant Method : Z:\VOASRV\HPCHEM1\MSVOA_U\METHOD\SOMUTR093019WMA.M
Quant Title : TRACE VOA SOM01.0
QLast Update : Sat Oct 05 00:29:19 2019
Response via : Initial Calibration

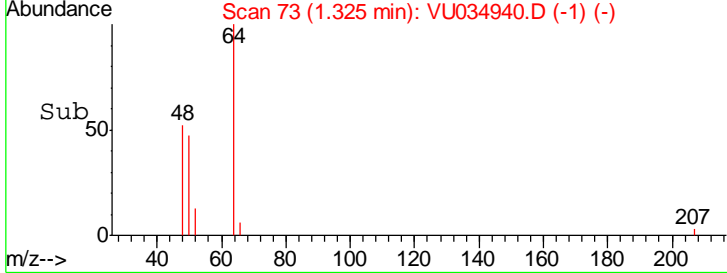
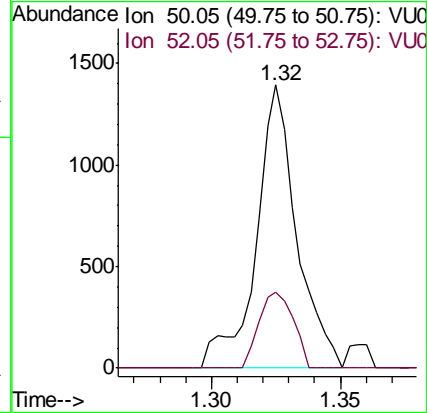
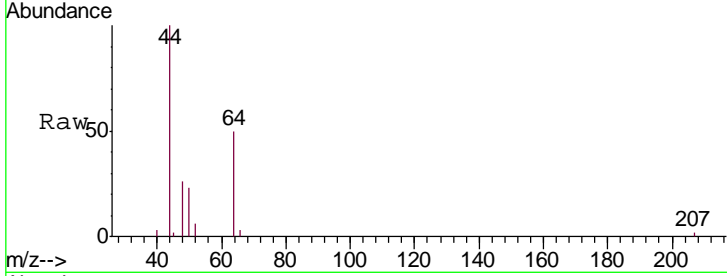




#3
 Chloromethane
 Concen: 0.163 ug/L
 RT: 1.32 min Scan# 73
 Delta R.T. 0.00 min
 Lab File: VU034940.D
 Acq: 04 Oct 2019 17:14

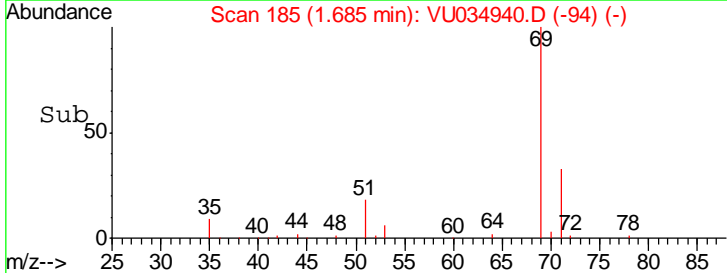
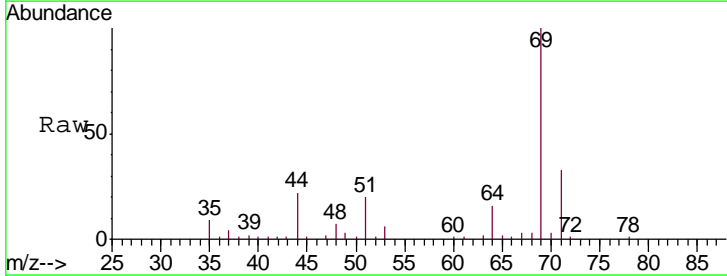
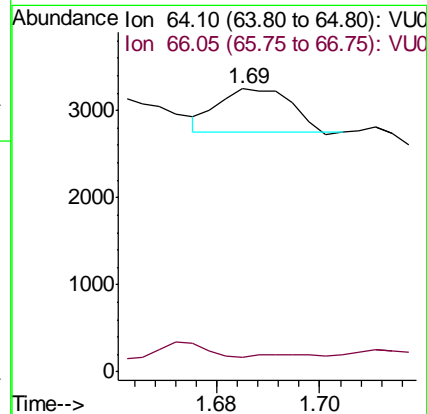
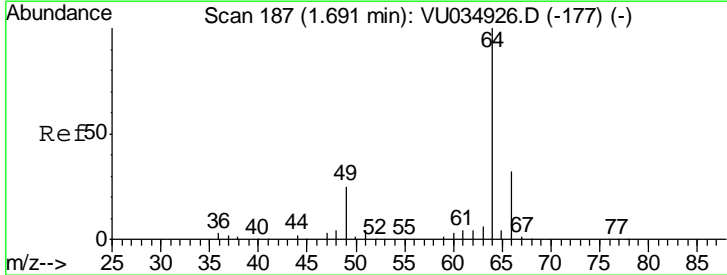
Instrument :
 MSVOA_U
ClientSampled :
 C0AB9

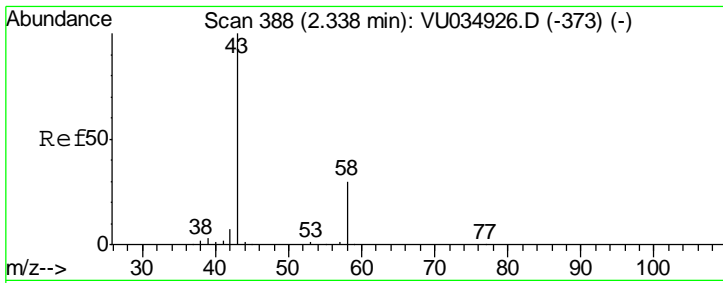
Tgt Ion: 50 Resp: 1526
 Ion Ratio Lower Upper
 50 100
 52 26.8 22.7 42.1



#8
 Chloroethane
 Concen: 0.082 ug/L
 RT: 1.69 min Scan# 185
 Delta R.T. -0.01 min
 Lab File: VU034940.D
 Acq: 04 Oct 2019 17:14

Tgt Ion: 64 Resp: 476
 Ion Ratio Lower Upper
 64 100
 66 5.2 20.9 38.9#

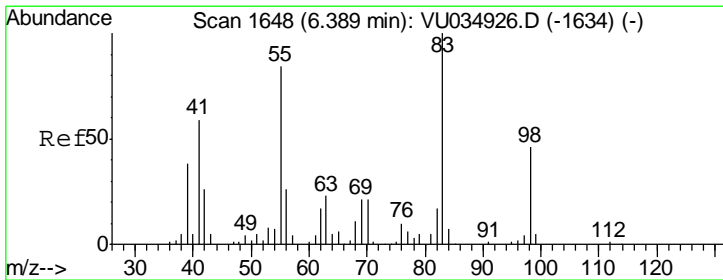
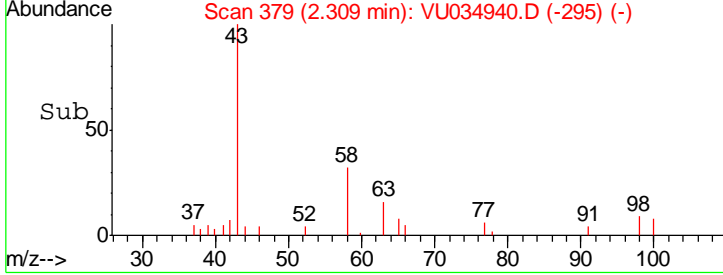
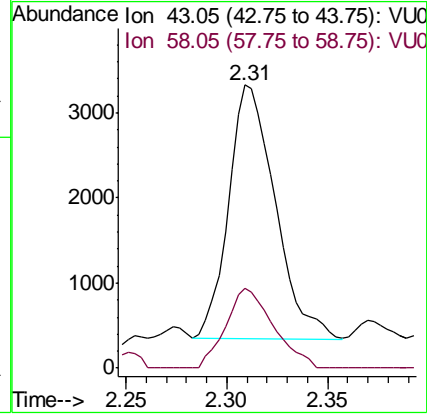
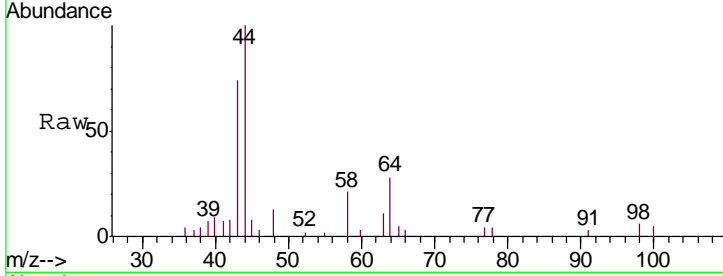




#13
 Acetone
 Concen: 1.680 ug/L
 RT: 2.31 min Scan# 379
 Delta R.T. -0.03 min
 Lab File: VU034940.D
 Acq: 04 Oct 2019 17:14

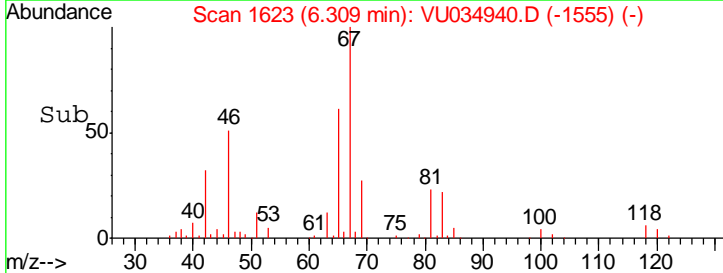
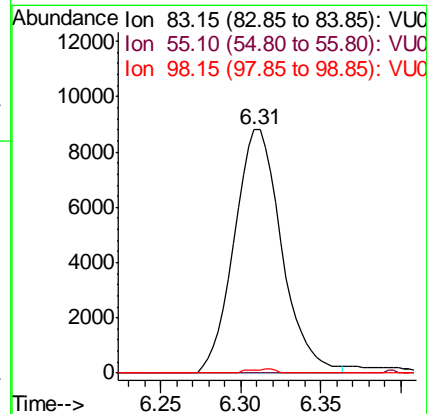
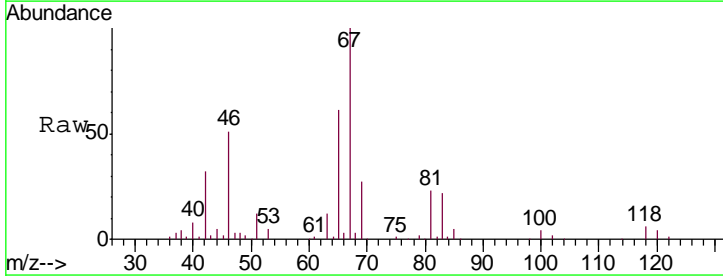
Instrument : MSVOA_U
 ClientSampled : C0AB9

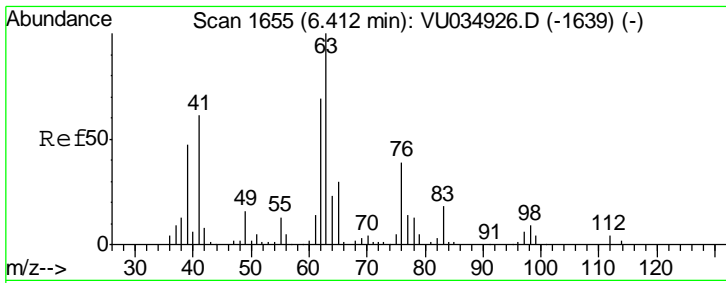
Tgt Ion	Resp	Lower	Upper
43	4811		
58	32.2	0.0	54.0



#35
 Methylcyclohexane
 Concen: 1.386 ug/L
 RT: 6.31 min Scan# 1623
 Delta R.T. -0.08 min
 Lab File: VU034940.D
 Acq: 04 Oct 2019 17:14

Tgt Ion	Resp	Lower	Upper
83	17852		
55	0.2	68.9	103.3#
98	1.0	36.6	54.8#

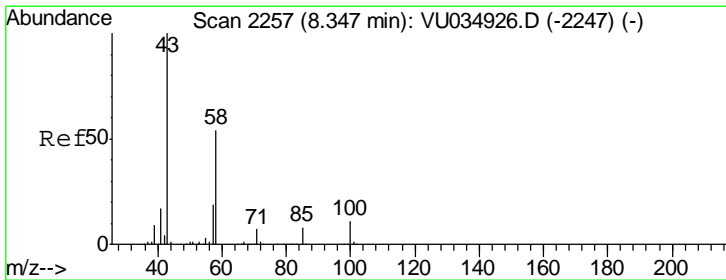
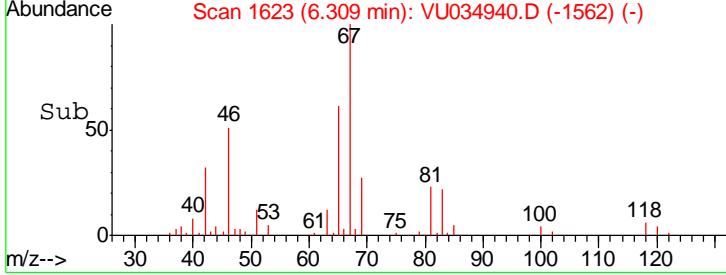
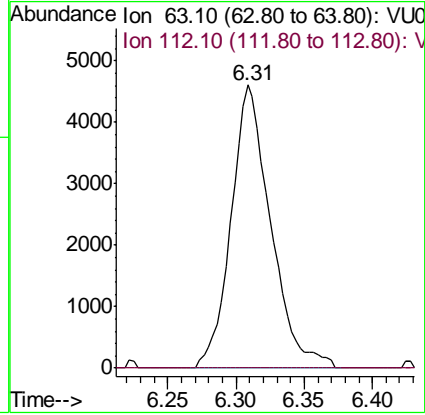
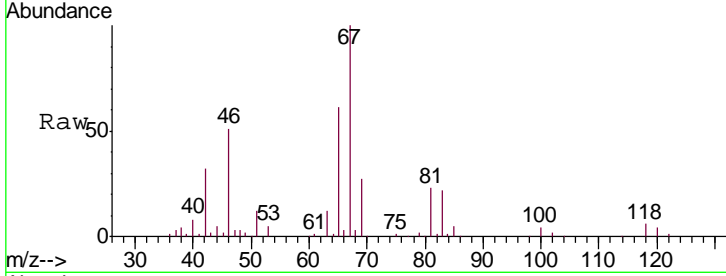




#37
 1,2-Dichloropropane
 Concen: 0.697 ug/L
 RT: 6.31 min Scan# 1623
 Delta R.T. -0.10 min
 Lab File: VU034940.D
 Acq: 04 Oct 2019 17:14

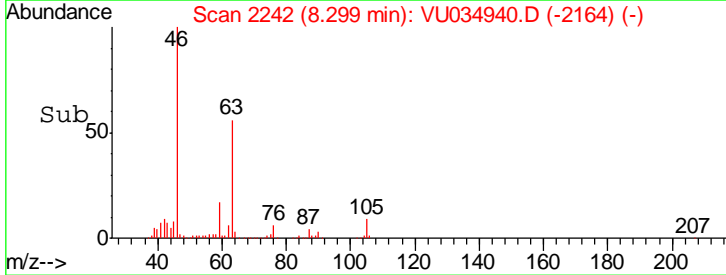
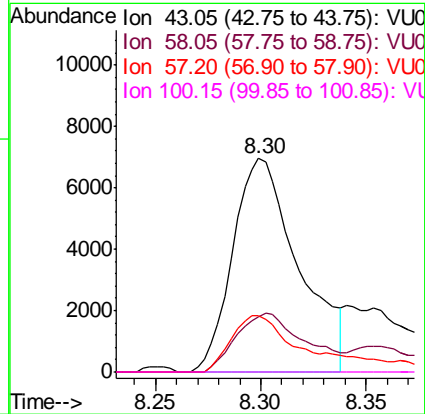
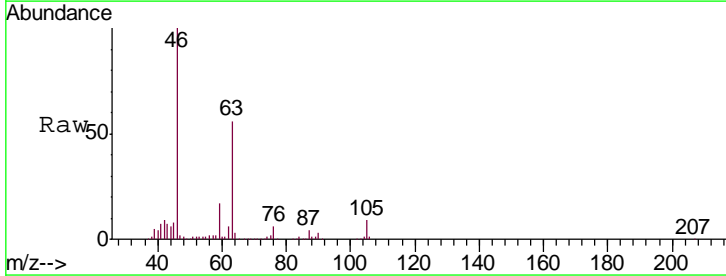
Instrument : MSVOA_U
 ClientSampled : C0AB9

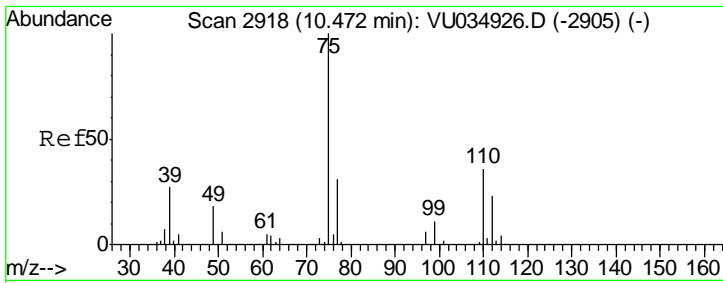
Tgt Ion	Resp	Lower	Upper
63	100		
112	0.0	2.6	4.0#



#48
 2-Hexanone
 Concen: 1.978 ug/L
 RT: 8.30 min Scan# 2242
 Delta R.T. -0.05 min
 Lab File: VU034940.D
 Acq: 04 Oct 2019 17:14

Tgt Ion	Resp	Lower	Upper
43	100		
58	28.5	37.1	55.7#
57	31.5	13.4	20.0#
100	0.0	7.0	10.4#





#59
 1,2,3-Trichloropropane
 Concen: 1.040 ug/L
 RT: 11.46 min Scan# 3226
 Delta R.T. 0.99 min
 Lab File: VU034940.D
 Acq: 04 Oct 2019 17:14

Instrument : MSVOA_U
 ClientSampled : C0AB9

Tgt Ion: 75 Resp: 9904

Ion	Ratio	Lower	Upper
75	100		
77	37.9	26.5	39.7

