

Data Path : Z:\VOASRV\HPCHEM1\MSVOA U\DATA\VU100419\
 Data File : VU034930.D
 Acq On : 04 Oct 2019 12:46
 Operator : JC/SP
 Sample : K5201-02
 Misc : 25.0mL/MSVOA U/WATER
 ALS Vial : 7 Sample Multiplier: 1

Instrument :
 MSVOA_U
 ClientSampleId :
 C0AB6

Quant Time: Oct 05 01:07:06 2019
 Quant Method : Z:\VOASRV\HPCHEM1\MSVOA_U\METHOD\SOMUTR093019WMA.M
 Quant Title : TRACE VOA SOM01.0
 QLast Update : Sat Oct 05 00:29:19 2019
 Response via : Initial Calibration

Internal Standards	R.T.	QIon	Response	Conc	Units	Dev(Min)
1) 1,4-Difluorobenzene	5.87	114	212082	5.00	ug/L	0.00
28) Chlorobenzene-d5	9.07	117	209948	5.00	ug/L	0.00
60) 1,4-Dichlorobenzene-d4	11.46	152	92537	5.00	ug/L	0.00

System Monitoring Compounds

4) Vinyl Chloride-d3	1.40	65	75700	5.04	ug/L	0.00
Spiked Amount	5.000	Range	40 - 130	Recovery	=	100.80%
7) Chloroethane-d5	1.68	69	63926	5.22	ug/L	0.00
Spiked Amount	5.000	Range	65 - 130	Recovery	=	104.40%
11) 1,1-Dichloroethene-d2	2.26	63	104467	4.06	ug/L	0.00
Spiked Amount	5.000	Range	60 - 125	Recovery	=	81.20%
20) 2-Butanone-d5	4.17	46	184078	43.06	ug/L	-0.02
Spiked Amount	50.000	Range	40 - 130	Recovery	=	86.12%
24) Chloroform-d	4.62	84	129000	5.08	ug/L	0.00
Spiked Amount	5.000	Range	70 - 125	Recovery	=	101.60%
26) 1,2-Dichloroethane-d4	5.29	65	71851	4.55	ug/L	0.00
Spiked Amount	5.000	Range	70 - 130	Recovery	=	91.00%
32) Benzene-d6	5.32	84	265626	5.13	ug/L	0.00
Spiked Amount	5.000	Range	70 - 125	Recovery	=	102.60%
36) 1,2-Dichloropropane-d6	6.31	67	87646	5.07	ug/L	0.00
Spiked Amount	5.000	Range	60 - 140	Recovery	=	101.40%
41) Toluene-d8	7.54	98	248419	5.00	ug/L	0.00
Spiked Amount	5.000	Range	70 - 130	Recovery	=	100.00%
43) trans-1,3-Dichloropropene-	7.83	79	29947	4.70	ug/L	0.00
Spiked Amount	5.000	Range	55 - 130	Recovery	=	94.00%
46) 2-Hexanone-d5	8.30	63	144529	46.04	ug/L	0.00
Spiked Amount	50.000	Range	45 - 130	Recovery	=	92.08%
57) 1,1,2,2-Tetrachloroethane-	10.41	84	66417	4.82	ug/L	0.00
Spiked Amount	5.000	Range	65 - 120	Recovery	=	96.40%
64) 1,2-Dichlorobenzene-d4	11.84	152	88319	5.76	ug/L	0.00
Spiked Amount	5.000	Range	80 - 120	Recovery	=	115.20%

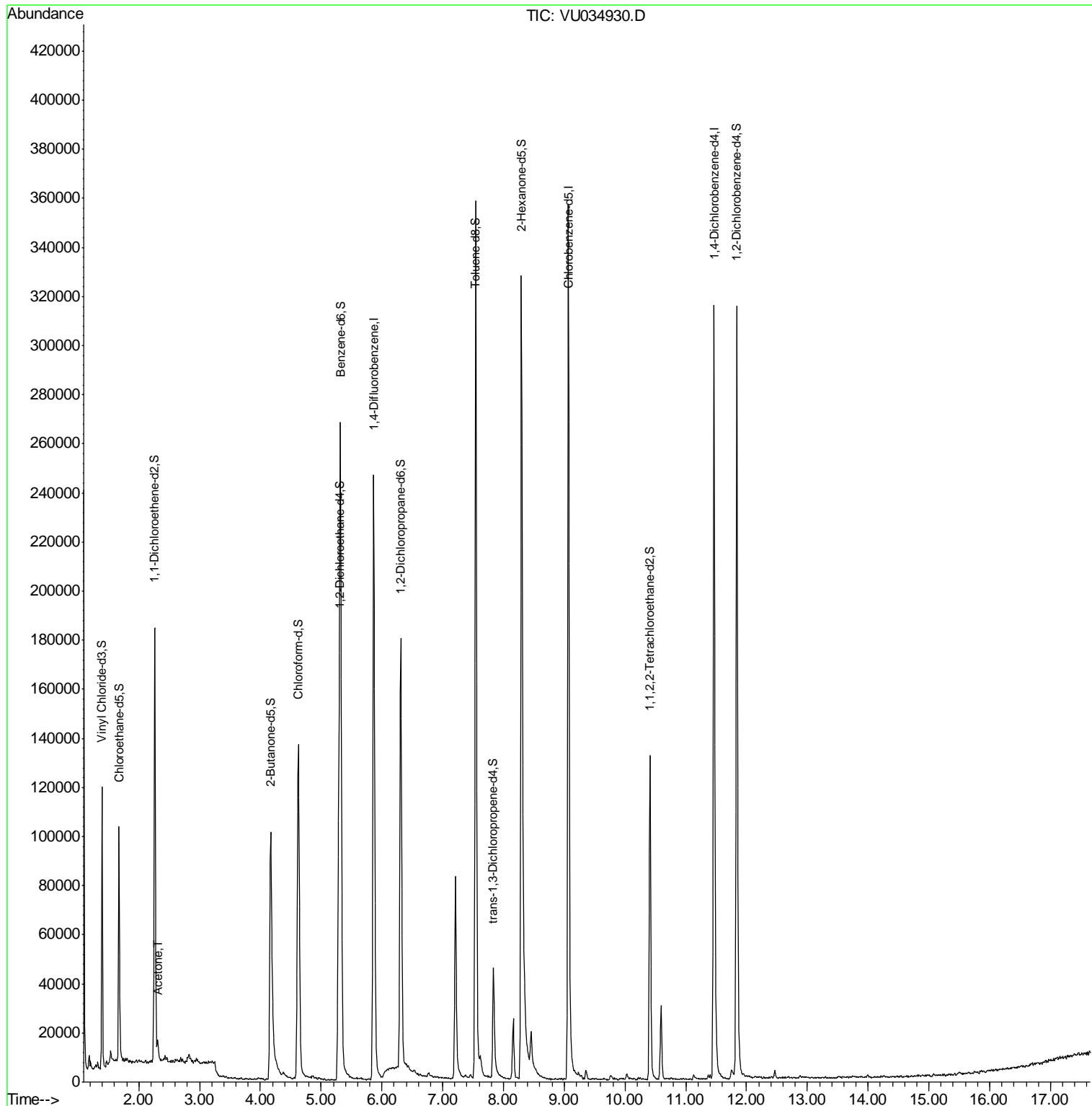
Target Compounds					Ovalue
13) Acetone	2.31	43	8354	2.670 ug/L	93

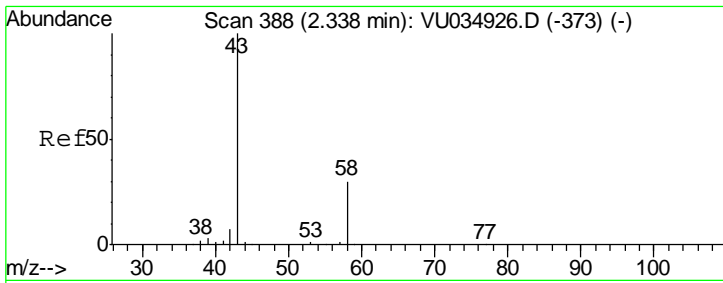
(#) = qualifier out of range (m) = manual integration (+) = signals summed

Data Path : Z:\VOASRV\HPCHEM1\MSVOA U\DATA\VU100419\
 Data File : VU034930.D
 Acq On : 04 Oct 2019 12:46
 Operator : JC/SP
 Sample : K5201-02
 Misc : 25.0mL/MSVOA U/WATER
 ALS Vial : 7 Sample Multiplier: 1

Instrument :
 MSVOA_U
 ClientSampled :
 C0AB6

Quant Time: Oct 05 01:07:06 2019
 Quant Method : Z:\VOASRV\HPCHEM1\MSVOA_U\METHOD\SOMUTR093019WMA.M
 Quant Title : TRACE VOA SOM01.0
 QLast Update : Sat Oct 05 00:29:19 2019
 Response via : Initial Calibration





#13
 Acetone
 Concen: 2.670 ug/L
 RT: 2.31 min Scan# 380
 Delta R.T. -0.03 min
 Lab File: VU034930.D
 Acq: 04 Oct 2019 12:46

Instrument :
 MSVOA_U
 ClientSampled :
 C0AB6

Tot Ion: 43 Resp: 8354

Ion	Ratio	Lower	Upper
43	100		
58	30.7	0.0	54.0

