

Data Path : Z:\voasrv\HPCHEM1\MSVOA_U\Data\VU100421\
 Data File : VU045111.D
 Acq On : 04 Oct 2021 21:48
 Operator : SY/MD
 Sample : VU1004WBL02
 Misc : 5.0mL/MSVOA_U/WATER
 ALS Vial : 29 Sample Multiplier: 1

Instrument :
 MSVOA_U
 ClientSampleId :
 VBLK010

Quant Time: Oct 05 06:45:29 2021
 Quant Method : Z:\voasrv\HPCHEM1\MSVOA_U\Method\SFAMULM092321WMA.M
 Quant Title : VOC Analysis
 QLast Update : Tue Oct 05 02:41:56 2021
 Response via : Initial Calibration

Compound	R.T.	QIon	Response	Conc	Units	Dev(Min)

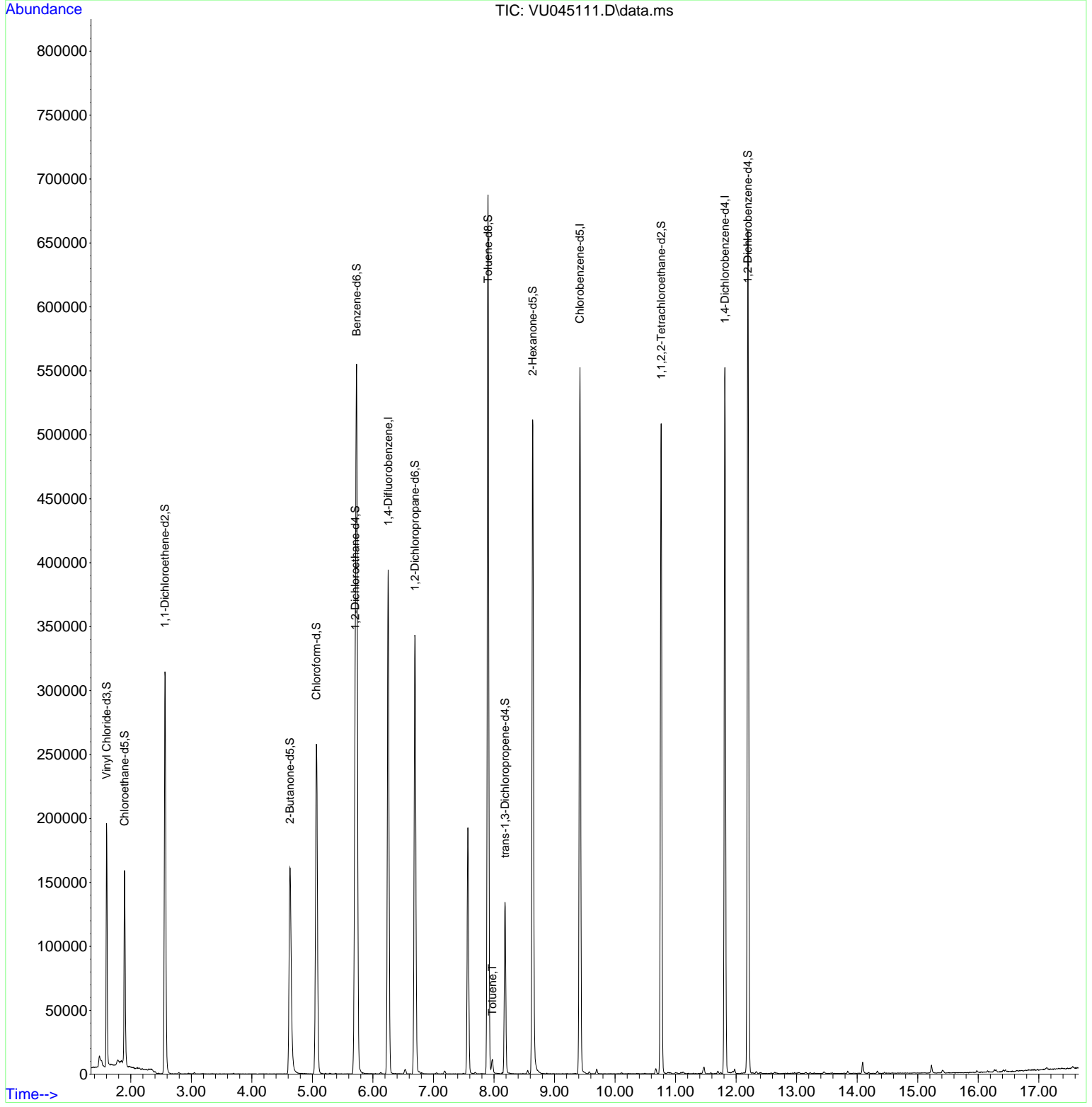
Internal Standards						
1) 1,4-Difluorobenzene	6.253	114	305979	50.00	ug/L	0.00
28) Chlorobenzene-d5	9.420	117	287006	50.00	ug/L	0.00
58) 1,4-Dichlorobenzene-d4	11.815	152	134436	50.00	ug/L	0.00
System Monitoring Compounds						
4) Vinyl Chloride-d3	1.600	65	136179	40.66	ug/L	0.00
Spiked Amount	50.000	Range 60 - 135	Recovery =	81.32%		
7) Chloroethane-d5	1.896	69	111324	41.94	ug/L	-0.02
Spiked Amount	50.000	Range 70 - 130	Recovery =	83.88%		
11) 1,1-Dichloroethene-d2	2.565	63	188726	33.55	ug/L	0.00
Spiked Amount	50.000	Range 60 - 125	Recovery =	67.10%		
21) 2-Butanone-d5	4.629	46	256105	96.71	ug/L	0.00
Spiked Amount	100.000	Range 40 - 130	Recovery =	96.71%		
24) Chloroform-d	5.067	84	234189	44.27	ug/L	0.00
Spiked Amount	50.000	Range 70 - 125	Recovery =	88.54%		
26) 1,2-Dichloroethane-d4	5.706	65	166247	46.39	ug/L	0.00
Spiked Amount	50.000	Range 70 - 125	Recovery =	92.78%		
32) Benzene-d6	5.732	84	494507	49.65	ug/L	0.00
Spiked Amount	50.000	Range 70 - 125	Recovery =	99.30%		
36) 1,2-Dichloropropane-d6	6.693	67	156923	48.32	ug/L	0.00
Spiked Amount	50.000	Range 70 - 120	Recovery =	96.64%		
41) Toluene-d8	7.902	98	437865	50.95	ug/L	0.00
Spiked Amount	50.000	Range 80 - 120	Recovery =	101.90%		
43) trans-1,3-Dichloroprop...	8.182	79	72127	49.93	ug/L	0.00
Spiked Amount	50.000	Range 60 - 125	Recovery =	99.86%		
47) 2-Hexanone-d5	8.639	63	190425	105.82	ug/L	0.00
Spiked Amount	100.000	Range 45 - 130	Recovery =	105.82%		
56) 1,1,2,2-Tetrachloroeth...	10.761	84	246041	48.66	ug/L	0.00
Spiked Amount	50.000	Range 65 - 120	Recovery =	97.32%		
66) 1,2-Dichlorobenzene-d4	12.195	152	158844	54.29	ug/L	0.00
Spiked Amount	50.000	Range 80 - 120	Recovery =	108.58%		
Target Compounds						
42) Toluene	7.973	91	7993	0.74	ug/L	89

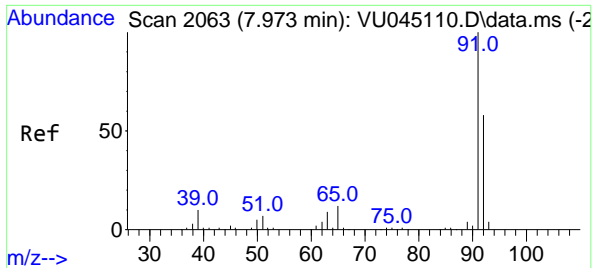
(#) = qualifier out of range (m) = manual integration (+) = signals summed

Data Path : Z:\voasrv\HPCHEM1\MSVOA_U\Data\VU100421\
 Data File : VU045111.D
 Acq On : 04 Oct 2021 21:48
 Operator : SY/MD
 Sample : VU1004WBL02
 Misc : 5.0mL/MSVOA_U/WATER
 ALS Vial : 29 Sample Multiplier: 1

Instrument :
 MSVOA_U
Client Sampled :
 VBLK010

Quant Time: Oct 05 06:45:29 2021
 Quant Method : Z:\voasrv\HPCHEM1\MSVOA_U\Method\SFAMULM092321WMA.M
 Quant Title : VOC Analysis
 QLast Update : Tue Oct 05 02:41:56 2021
 Response via : Initial Calibration





#42
 Toluene
 Concen: 0.74 ug/L
 RT: 7.973 min Scan# 2063
 Delta R.T. -0.000 min
 Lab File: VU045111.D
 Acq: 04 Oct 2021 21:48

Instrument :
 MSVOA_U
 ClientSampled :
 VBLK010

Tgt Ion: 91 Resp: 7993
 Ion Ratio Lower Upper
 91 100
 92 49.5 40.5 75.1

