

Data Path : Z:\voasrv\HPCHEM1\MSVOA_U\Data\VU100621\
 Data File : VU0451184.D
 Acq On : 06 Oct 2021 14:39
 Operator : SY/MD
 Sample : M3996-10
 Misc : 5.0mL/MSVOA_U/WATER
 ALS Vial : 13 Sample Multiplier: 1

Instrument :
 MSVOA_U
 ClientSampled :

Quant Time: Oct 07 03:02:23 2021
 Quant Method : Z:\voasrv\HPCHEM1\MSVOA_U\Method\SFAMULM092321WMA.M
 Quant Title : VOC Analysis
 QLast Update : Thu Oct 07 03:00:32 2021
 Response via : Initial Calibration

Compound	R.T.	QIon	Response	Conc	Units	Dev(Min)

Internal Standards						
1) 1,4-Difluorobenzene	6.253	114	290841	50.000	ug/L	0.00
28) Chlorobenzene-d5	9.420	117	281334	50.000	ug/L	0.00
58) 1,4-Dichlorobenzene-d4	11.815	152	121578	50.000	ug/L	0.00
System Monitoring Compounds						
4) Vinyl Chloride-d3	1.600	65	135823	42.660	ug/L	0.00
Spiked Amount	50.000	Range 60 - 135	Recovery =	85.320%		
7) Chloroethane-d5	1.899	69	109053	43.224	ug/L	0.00
Spiked Amount	50.000	Range 70 - 130	Recovery =	86.440%		
11) 1,1-Dichloroethene-d2	2.565	63	166487	31.138	ug/L	0.00
Spiked Amount	50.000	Range 60 - 125	Recovery =	62.280%		
21) 2-Butanone-d5	4.626	46	200826	79.785	ug/L	0.00
Spiked Amount	100.000	Range 40 - 130	Recovery =	79.790%		
24) Chloroform-d	5.070	84	207438	41.252	ug/L	0.00
Spiked Amount	50.000	Range 70 - 125	Recovery =	82.500%		
26) 1,2-Dichloroethane-d4	5.706	65	147506	43.306	ug/L	0.00
Spiked Amount	50.000	Range 70 - 125	Recovery =	86.620%		
32) Benzene-d6	5.732	84	432020	44.254	ug/L	0.00
Spiked Amount	50.000	Range 70 - 125	Recovery =	88.500%		
36) 1,2-Dichloropropane-d6	6.693	67	138214	43.421	ug/L	0.00
Spiked Amount	50.000	Range 70 - 120	Recovery =	86.840%		
41) Toluene-d8	7.902	98	378459	44.923	ug/L	0.00
Spiked Amount	50.000	Range 80 - 120	Recovery =	89.840%		
43) trans-1,3-Dichloroprop...	8.182	79	62571	44.190	ug/L	0.00
Spiked Amount	50.000	Range 60 - 125	Recovery =	88.380%		
47) 2-Hexanone-d5	8.635	63	143667	81.444	ug/L	0.00
Spiked Amount	100.000	Range 45 - 130	Recovery =	81.440%		
56) 1,1,2,2-Tetrachloroeth...	10.761	84	206760	41.713	ug/L	0.00
Spiked Amount	50.000	Range 65 - 120	Recovery =	83.420%		
66) 1,2-Dichlorobenzene-d4	12.198	152	130356	49.268	ug/L	0.00
Spiked Amount	50.000	Range 80 - 120	Recovery =	98.540%		

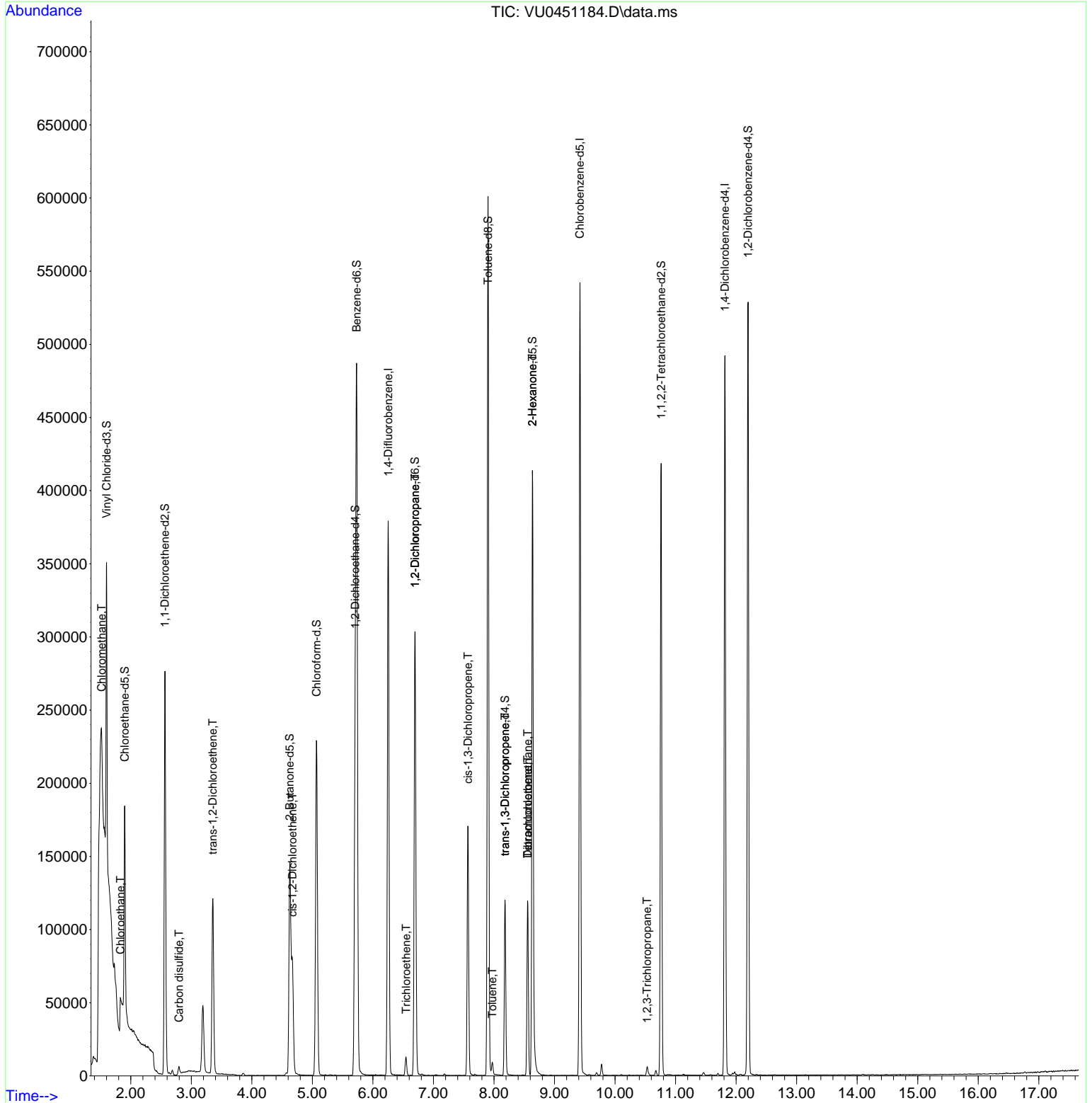
Target Compounds						Qvalue
3) Chloromethane	1.520	50	8945	2.577	ug/L #	57
8) Chloroethane	1.832	64	29486	13.815	ug/L #	51
14) Carbon disulfide	2.796	76	9243	1.281	ug/L	97
17) trans-1,2-Dichloroethene	3.356	96	48921	20.620	ug/L	96
20) cis-1,2-Dichloroethene	4.671	96	33288	12.733	ug/L	95
34) Trichloroethene	6.549	95	3914	1.562	ug/L	92
37) 1,2-Dichloropropane	6.697	63	15719	5.533	ug/L #	88
39) cis-1,3-Dichloropropene	7.571	75	4053	0.997	ug/L #	61
42) Toluene	7.973	91	5749	0.542	ug/L	93
44) trans-1,3-Dichloropropene	8.182	75	2656	0.687	ug/L #	72
46) Tetrachloroethene	8.558	164	25147	14.038	ug/L	95
48) 2-Hexanone	8.635	43	17433	4.142	ug/L #	69
49) Dibromochloromethane	8.558	129	23631	9.280	ug/L #	11
60) 1,2,3-Trichloropropane	10.529	75	3984	1.185	ug/L #	41

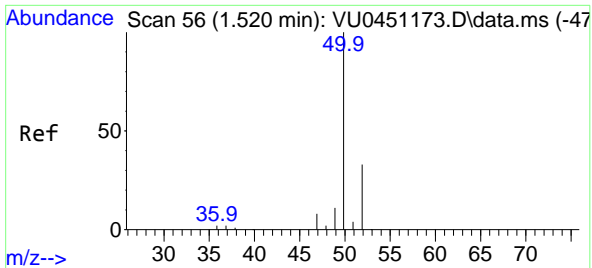
(#) = qualifier out of range (m) = manual integration (+) = signals summed

Data Path : Z:\voasrv\HPCHEM1\MSVOA_U\Data\VU100621\
 Data File : VU0451184.D
 Acq On : 06 Oct 2021 14:39
 Operator : SY/MD
 Sample : M3996-10
 Misc : 5.0mL/MSVOA_U/WATER
 ALS Vial : 13 Sample Multiplier: 1

Instrument :
 MSVOA_U
 ClientSampled :

Quant Time: Oct 07 03:02:23 2021
 Quant Method : Z:\voasrv\HPCHEM1\MSVOA_U\Method\SFAMULM092321WMA.M
 Quant Title : VOC Analysis
 QLast Update : Thu Oct 07 03:00:32 2021
 Response via : Initial Calibration

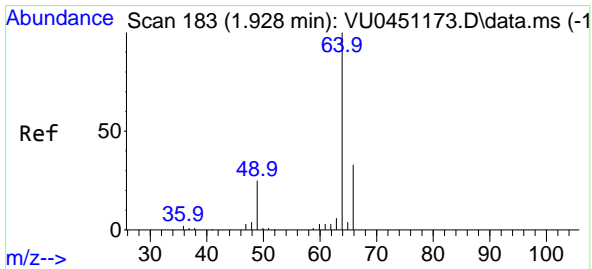
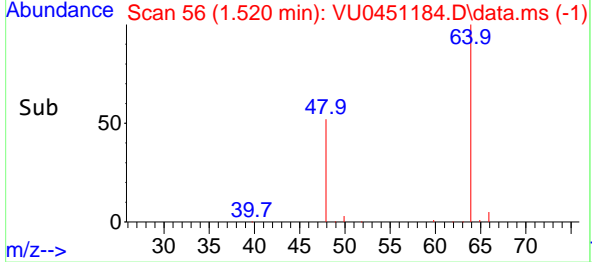
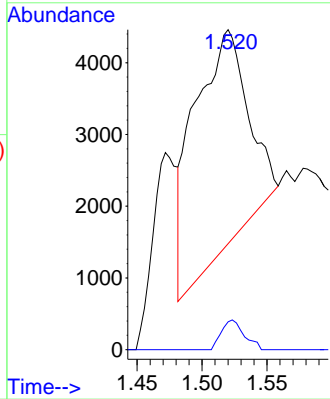
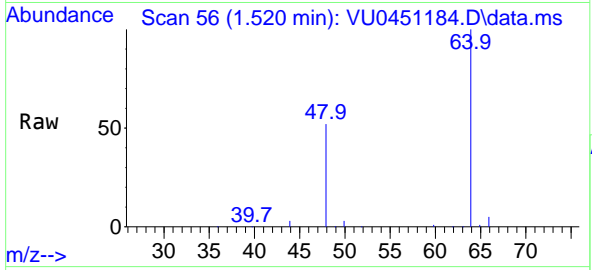




#3
 Chloromethane
 Concen: 2.577 ug/L
 RT: 1.520 min Scan# 56
 Delta R.T. 0.000 min
 Lab File: VU0451184.D
 Acq: 06 Oct 2021 14:39

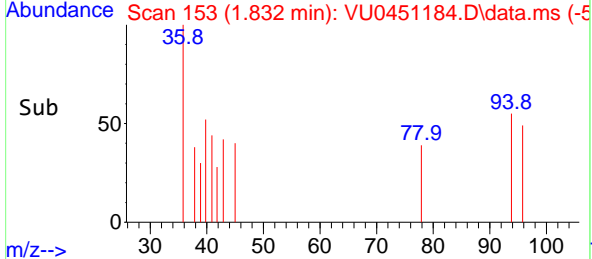
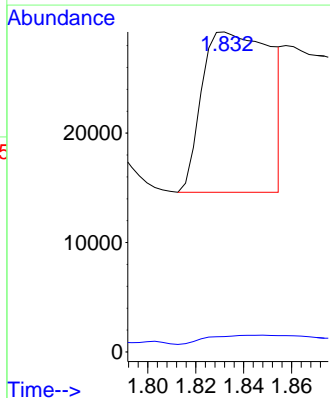
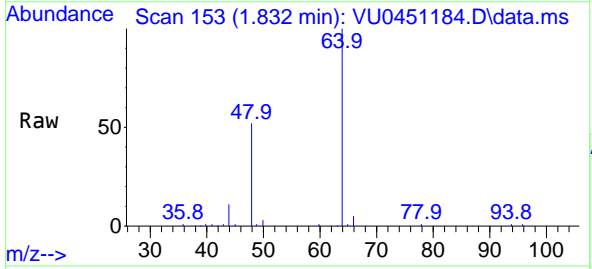
Instrument :
 MSVOA_U
 ClientSampled :

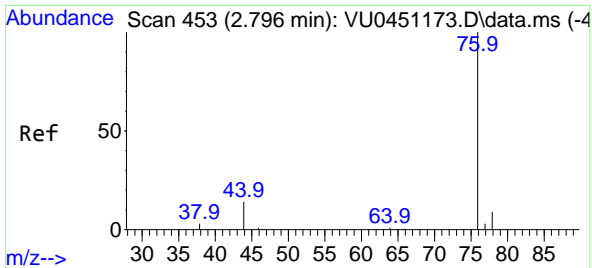
Tgt Ion: 50 Resp: 8945
 Ion Ratio Lower Upper
 50 100
 52 8.7 23.0 42.8#



#8
 Chloroethane
 Concen: 13.815 ug/L
 RT: 1.832 min Scan# 153
 Delta R.T. -0.096 min
 Lab File: VU0451184.D
 Acq: 06 Oct 2021 14:39

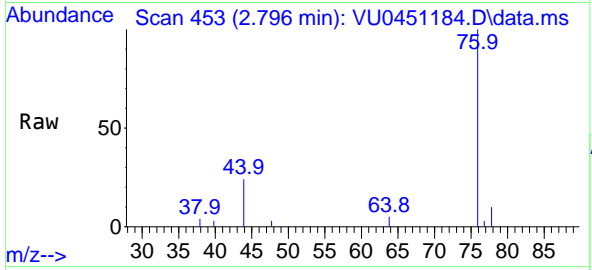
Tgt Ion: 64 Resp: 29486
 Ion Ratio Lower Upper
 64 100
 66 4.8 22.3 41.3#



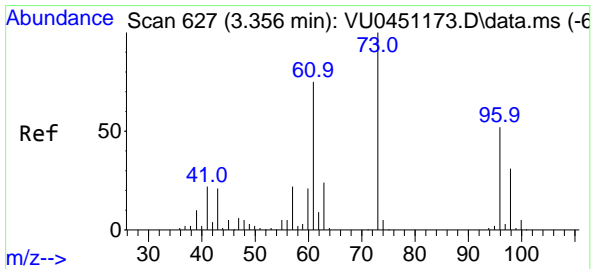
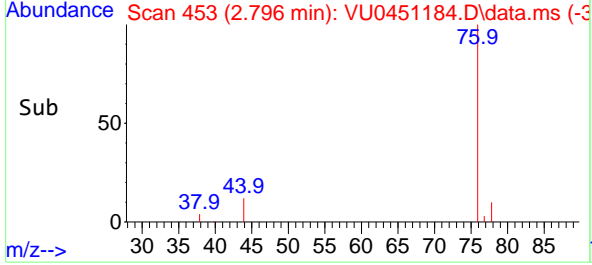
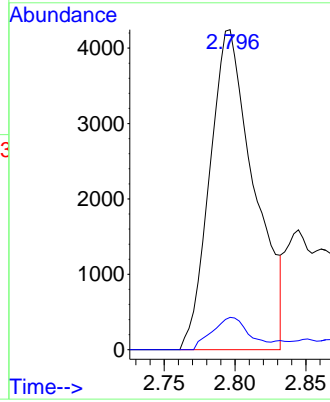


#14
 Carbon disulfide
 Concen: 1.281 ug/L
 RT: 2.796 min Scan# 453
 Delta R.T. -0.000 min
 Lab File: VU0451184.D
 Acq: 06 Oct 2021 14:39

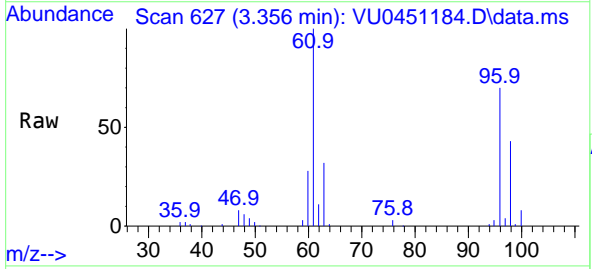
Instrument :
 MSVOA_U
 ClientSampled :



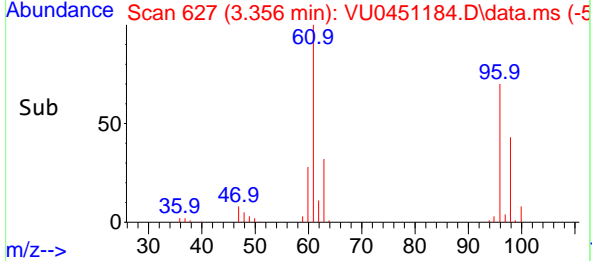
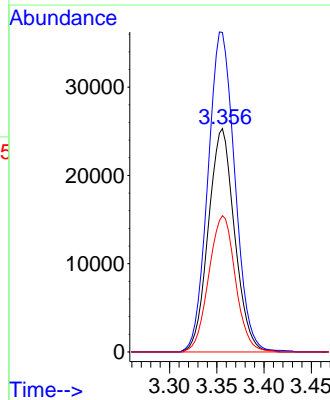
Tgt Ion: 76 Resp: 9243
 Ion Ratio Lower Upper
 76 100
 78 10.1 7.3 10.9

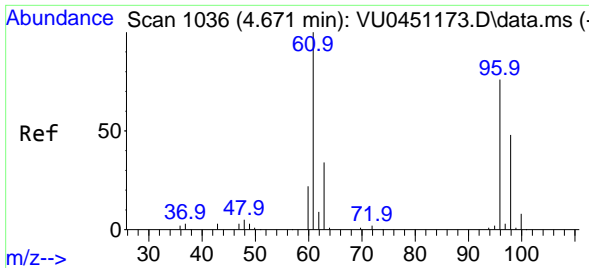


#17
 trans-1,2-Dichloroethene
 Concen: 20.620 ug/L
 RT: 3.356 min Scan# 627
 Delta R.T. -0.000 min
 Lab File: VU0451184.D
 Acq: 06 Oct 2021 14:39



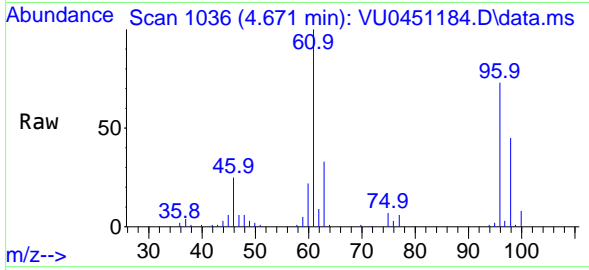
Tgt Ion: 96 Resp: 48921
 Ion Ratio Lower Upper
 96 100
 61 143.0 105.1 195.3
 98 61.0 43.0 79.8



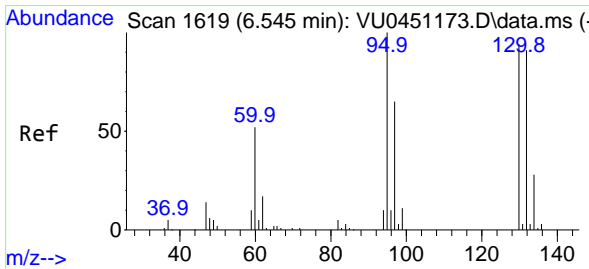
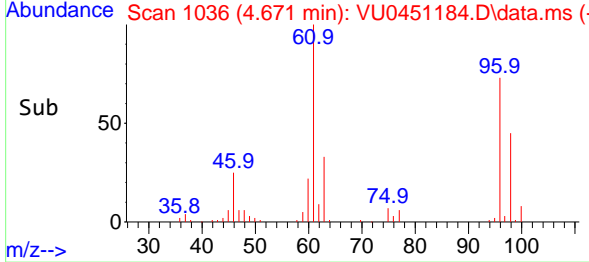
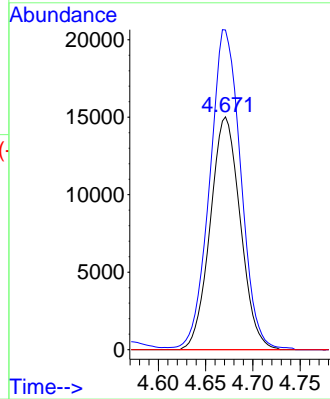


#20
 cis-1,2-Dichloroethene
 Concen: 12.733 ug/L
 RT: 4.671 min Scan# 1036
 Delta R.T. -0.000 min
 Lab File: VU0451184.D
 Acq: 06 Oct 2021 14:39

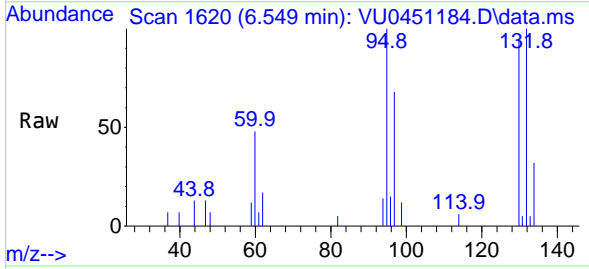
Instrument :
 MSVOA_U
 ClientSampled :



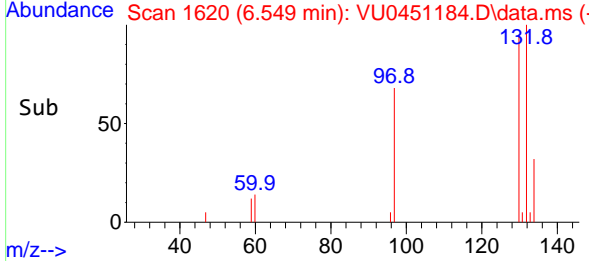
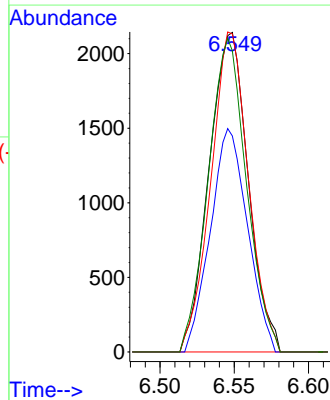
Tgt Ion: 96 Resp: 33288
 Ion Ratio Lower Upper
 96 100
 61 137.3 100.2 186.0
 68 0.0 0.0 0.0

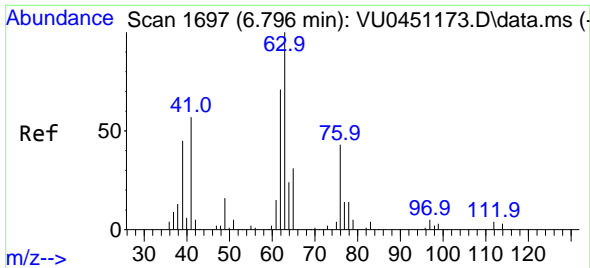


#34
 Trichloroethene
 Concen: 1.562 ug/L
 RT: 6.549 min Scan# 1620
 Delta R.T. 0.003 min
 Lab File: VU0451184.D
 Acq: 06 Oct 2021 14:39



Tgt Ion: 95 Resp: 3914
 Ion Ratio Lower Upper
 95 100
 97 67.6 44.4 82.4
 132 99.5 62.9 116.9
 130 99.1 65.0 120.8

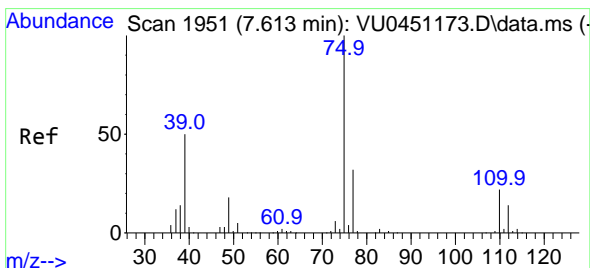
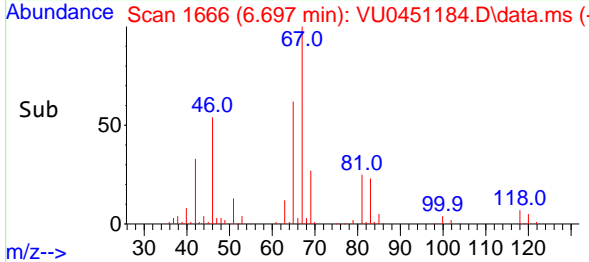
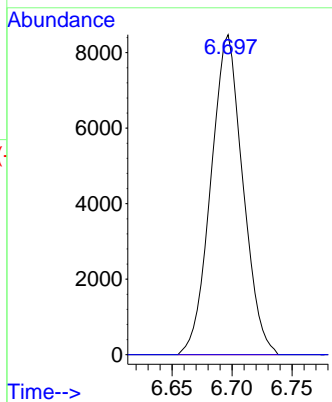
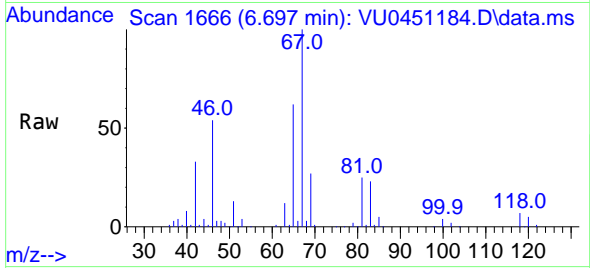




#37
 1,2-Dichloropropane
 Concen: 5.533 ug/L
 RT: 6.697 min Scan# 1666
 Delta R.T. -0.100 min
 Lab File: VU0451184.D
 Acq: 06 Oct 2021 14:39

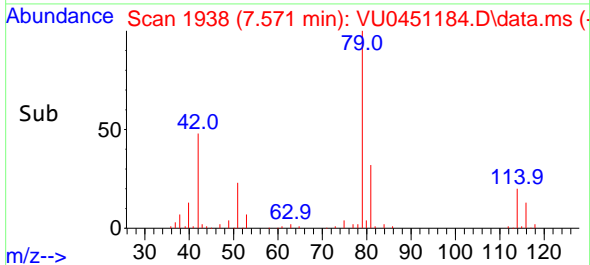
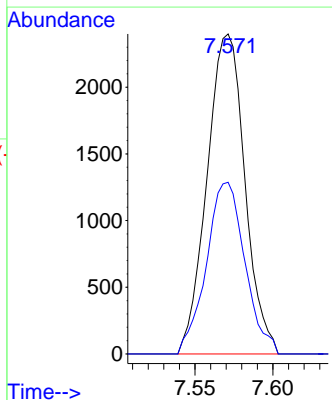
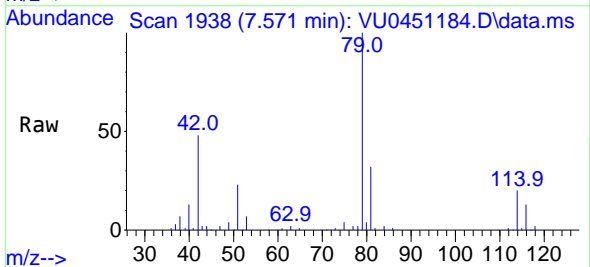
Instrument :
 MSVOA_U
 ClientSampled :

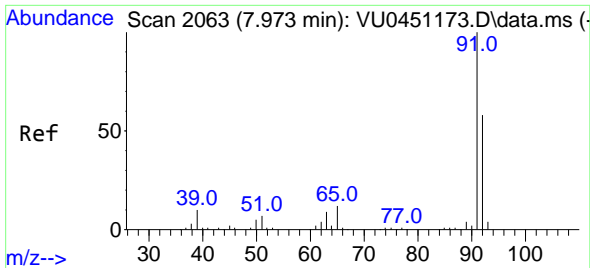
Tgt Ion: 63 Resp: 15719
 Ion Ratio Lower Upper
 63 100
 112 0.0 3.2 4.8#



#39
 cis-1,3-Dichloropropene
 Concen: 0.997 ug/L
 RT: 7.571 min Scan# 1938
 Delta R.T. -0.042 min
 Lab File: VU0451184.D
 Acq: 06 Oct 2021 14:39

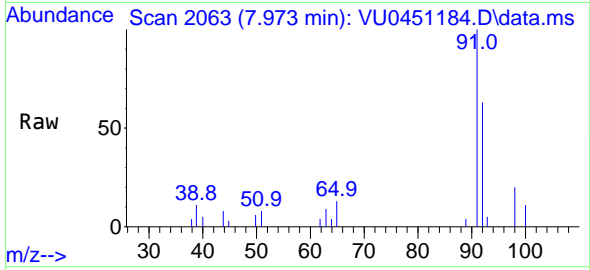
Tgt Ion: 75 Resp: 4053
 Ion Ratio Lower Upper
 75 100
 77 53.6 22.4 41.6#



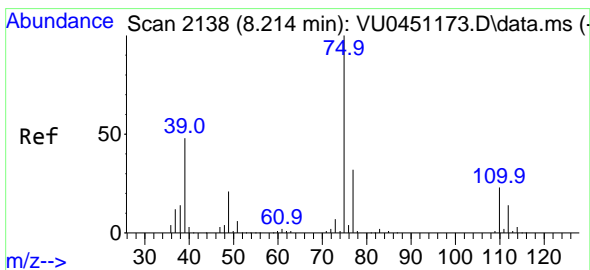
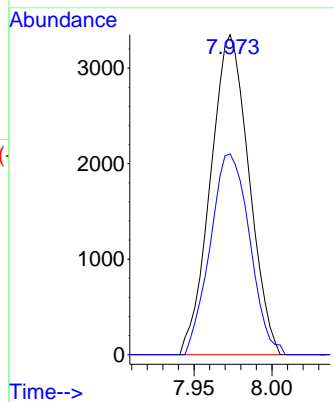
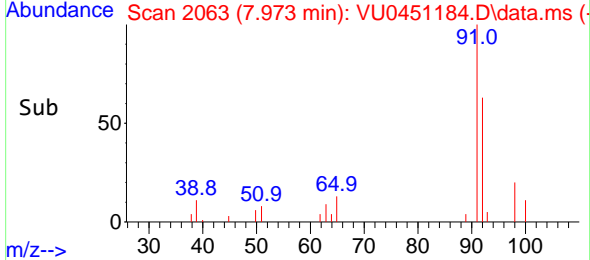


#42
 Toluene
 Concen: 0.542 ug/L
 RT: 7.973 min Scan# 2063
 Delta R.T. 0.000 min
 Lab File: VU0451184.D
 Acq: 06 Oct 2021 14:39

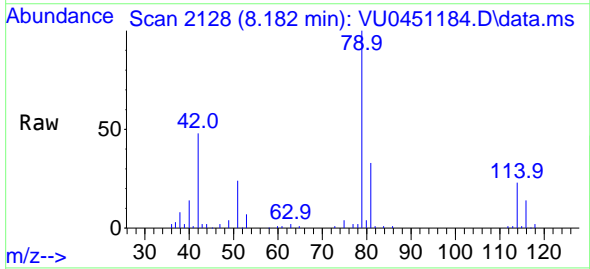
Instrument :
 MSVOA_U
 ClientSampled :



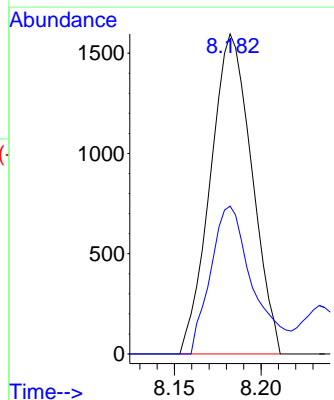
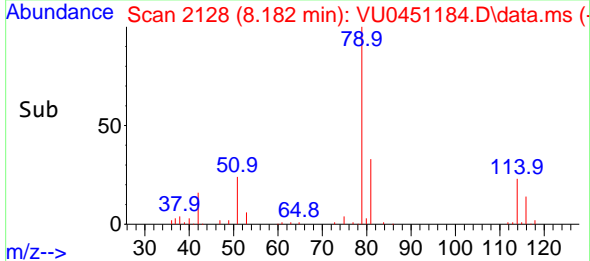
Tgt Ion: 91 Resp: 5749
 Ion Ratio Lower Upper
 91 100
 92 62.7 40.5 75.1

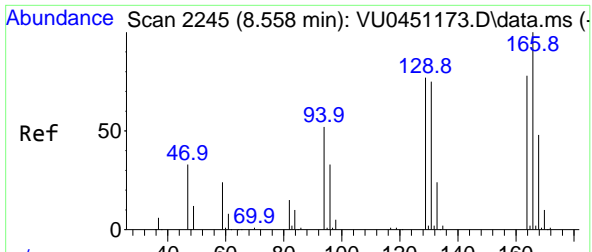


#44
 trans-1,3-Dichloropropene
 Concen: 0.687 ug/L
 RT: 8.182 min Scan# 2128
 Delta R.T. -0.032 min
 Lab File: VU0451184.D
 Acq: 06 Oct 2021 14:39



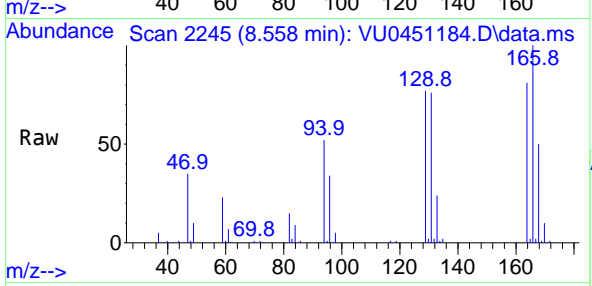
Tgt Ion: 75 Resp: 2656
 Ion Ratio Lower Upper
 75 100
 77 46.2 21.7 40.3#





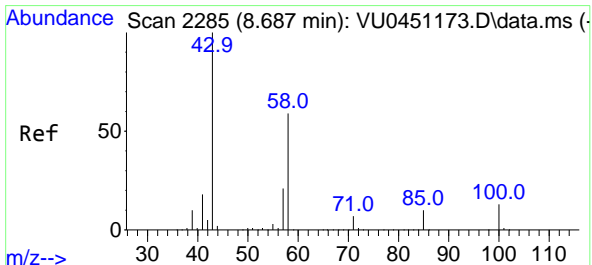
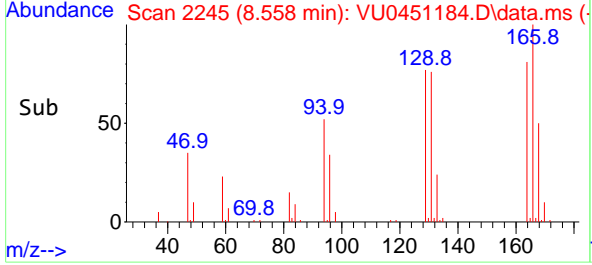
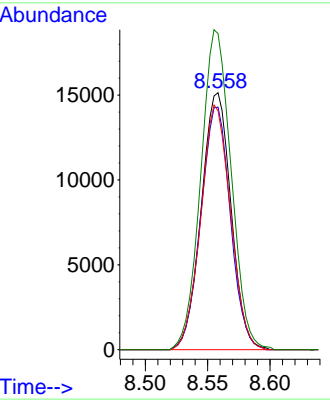
#46
 Tetrachloroethene
 Concen: 14.038 ug/L
 RT: 8.558 min Scan# 2245
 Delta R.T. 0.000 min
 Lab File: VU0451184.D
 Acq: 06 Oct 2021 14:39

Instrument :
 MSVOA_U
 ClientSampled :

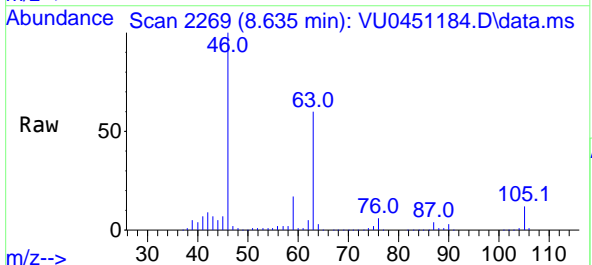


Tgt Ion:164 Resp: 25147

Ion	Ratio	Lower	Upper
164	100		
129	94.4	69.8	129.6
131	93.1	66.4	123.2
166	123.0	91.1	169.3

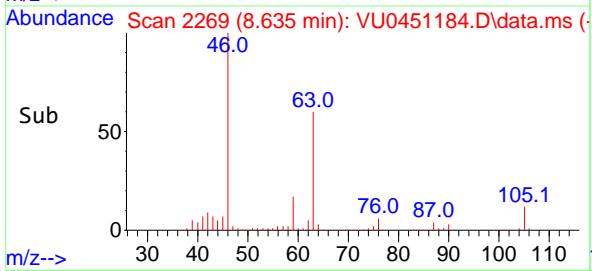
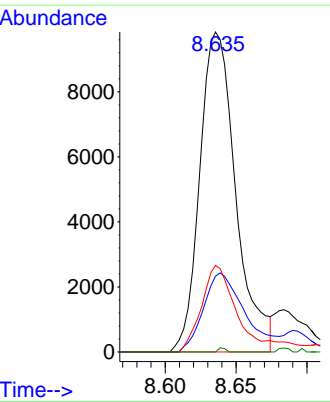


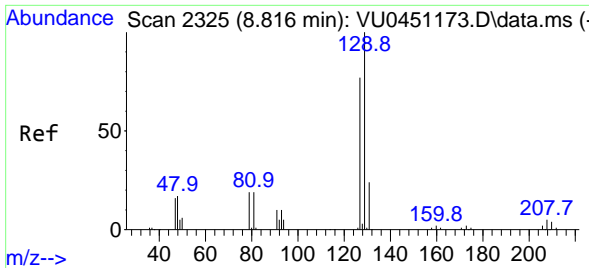
#48
 2-Hexanone
 Concen: 4.142 ug/L
 RT: 8.635 min Scan# 2269
 Delta R.T. -0.051 min
 Lab File: VU0451184.D
 Acq: 06 Oct 2021 14:39



Tgt Ion: 43 Resp: 17433

Ion	Ratio	Lower	Upper
43	100		
58	28.6	44.9	67.3#
57	25.0	15.5	23.3#
100	0.3	9.4	14.0#

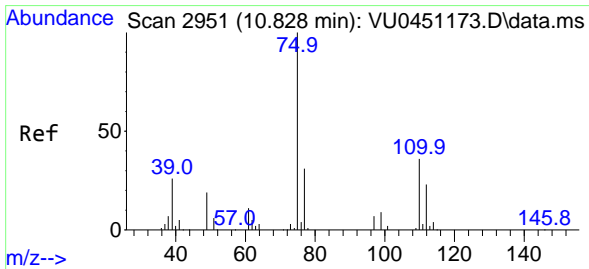
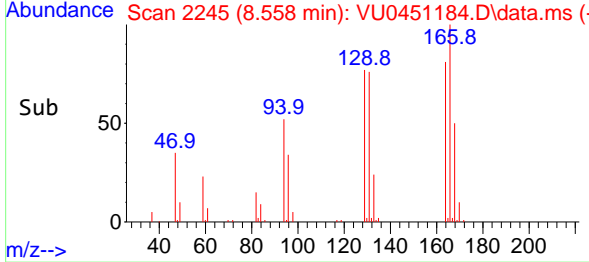
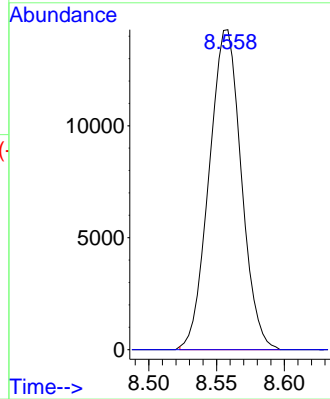
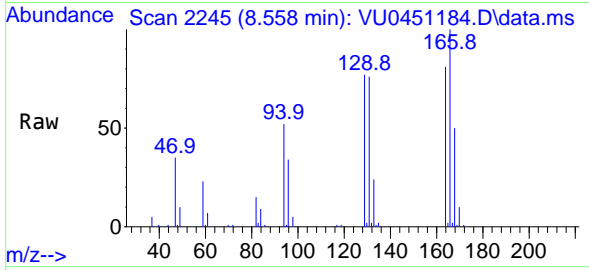




#49
 Dibromochloromethane
 Concen: 9.280 ug/L
 RT: 8.558 min Scan# 2245
 Delta R.T. -0.257 min
 Lab File: VU0451184.D
 Acq: 06 Oct 2021 14:39

Instrument :
 MSVOA_U
 ClientSampled :

Tgt Ion:129 Resp: 23631
 Ion Ratio Lower Upper
 129 100
 127 0.0 54.3 100.8#



#60
 1,2,3-Trichloropropane
 Concen: 1.185 ug/L
 RT: 10.529 min Scan# 2858
 Delta R.T. -0.299 min
 Lab File: VU0451184.D
 Acq: 06 Oct 2021 14:39

Tgt Ion: 75 Resp: 3984
 Ion Ratio Lower Upper
 75 100
 77 0.0 25.5 38.3#
 110 0.0 29.0 43.4#

