

Data Path : Z:\VOASRV\HPCHEM1\MSVOA U\DATA\VU100720\
 Data File : VU040541.D
 Acq On : 07 Oct 2020 10:43
 Operator : SY/MD
 Sample : VSTDCCC050
 Misc : 5.0mL/MSVOA U/WATER
 ALS Vial : 2 Sample Multiplier: 1

Instrument :
 MSVOA_U
 ClientSampleId :
 VSTD050210

Quant Time: Oct 08 01:17:29 2020
 Quant Method : Z:\VOASRV\HPCHEM1\MSVOA_U\METHOD\SFAMUL100620WMA.M
 Quant Title : VOC Analysis
 QLast Update : Wed Oct 07 08:04:20 2020
 Response via : Initial Calibration

Internal Standards	R.T.	QIon	Response	Conc	Units	Dev(Min)
1) 1,4-Difluorobenzene	6.26	114	272981	50.00	ug/L	0.00
28) Chlorobenzene-d5	9.42	117	273767	50.00	ug/L	0.00
58) 1,4-Dichlorobenzene-d4	11.81	152	141946	50.00	ug/L	0.00

System Monitoring Compounds

4) Vinyl Chloride-d3	1.60	65	110670	47.21	ug/L	0.00
Spiked Amount	50.000	Range	60 - 135	Recovery	=	94.42%
7) Chloroethane-d5	1.92	69	88677	49.65	ug/L	0.00
Spiked Amount	50.000	Range	70 - 130	Recovery	=	99.30%
11) 1,1-Dichloroethene-d2	2.58	63	215680	48.21	ug/L	0.00
Spiked Amount	50.000	Range	60 - 125	Recovery	=	96.42%
21) 2-Butanone-d5	4.64	46	187816	100.95	ug/L	0.00
Spiked Amount	100.000	Range	40 - 130	Recovery	=	100.95%
24) Chloroform-d	5.08	84	205586	50.84	ug/L	0.00
Spiked Amount	50.000	Range	70 - 125	Recovery	=	101.68%
26) 1,2-Dichloroethane-d4	5.72	65	138714	49.25	ug/L	0.00
Spiked Amount	50.000	Range	70 - 125	Recovery	=	98.50%
32) Benzene-d6	5.74	84	382896	49.14	ug/L	0.00
Spiked Amount	50.000	Range	70 - 125	Recovery	=	98.28%
36) 1,2-Dichloropropane-d6	6.70	67	129242	49.49	ug/L	0.00
Spiked Amount	50.000	Range	70 - 120	Recovery	=	98.98%
41) Toluene-d8	7.91	98	352829	49.95	ug/L	0.00
Spiked Amount	50.000	Range	80 - 120	Recovery	=	99.90%
43) trans-1,3-Dichloropropene-	8.19	79	59870	45.80	ug/L	0.00
Spiked Amount	50.000	Range	60 - 125	Recovery	=	91.60%
47) 2-Hexanone-d5	8.64	63	124113	101.95	ug/L	0.00
Spiked Amount	100.000	Range	45 - 130	Recovery	=	101.95%
56) 1,1,2,2-Tetrachloroethane-	10.75	84	183530	48.65	ug/L	0.00
Spiked Amount	50.000	Range	65 - 120	Recovery	=	97.30%
66) 1,2-Dichlorobenzene-d4	12.19	152	134604	46.60	ug/L	0.00
Spiked Amount	50.000	Range	80 - 120	Recovery	=	93.20%

Target Compounds

Target Compounds	R.T.	QIon	Response	Conc	Units	Ovalue
2) Dichlorodifluoromethane	1.39	85	128239	48.786	ug/L	98
3) Chloromethane	1.52	50	132232	47.871	ug/L	99
5) Vinyl chloride	1.61	62	132287	48.371	ug/L	99
6) Bromomethane	1.86	94	68404	47.653	ug/L	96
8) Chloroethane	1.94	64	81635	49.473	ug/L	99
9) Trichlorofluoromethane	2.14	101	174923	49.862	ug/L	99
10) 1,1,2-Trichloro-1,2,2-trif	2.59	101	103569	49.526	ug/L	99
12) 1,1-Dichloroethene	2.59	96	96326	49.821	ug/L	92
13) Acetone	2.63	43	125823	70.419	ug/L	99
14) Carbon disulfide	2.80	76	317916	47.896	ug/L	98
15) Methyl Acetate	2.96	43	144006	49.411	ug/L	100
16) Methylene chloride	3.06	84	113341	49.430	ug/L	95
17) trans-1,2-Dichloroethene	3.37	96	103549	50.284	ug/L	94
18) Methyl tert-butyl Ether	3.38	73	316145	48.810	ug/L	99
19) 1,1-Dichloroethane	3.89	63	200512	48.820	ug/L	100
20) cis-1,2-Dichloroethene	4.68	96	108468	48.874	ug/L	98
22) 2-Butanone	4.71	43	203287	89.189	ug/L	100

Data Path : Z:\VOASRV\HPCHEM1\MSVOA U\DATA\VU100720\
 Data File : VU040541.D
 Acq On : 07 Oct 2020 10:43
 Operator : SY/MD
 Sample : VSTDCCC050
 Misc : 5.0mL/MSVOA U/WATER
 ALS Vial : 2 Sample Multiplier: 1

Instrument :
 MSVOA_U
 ClientSampleId :
 VSTD050210

Quant Time: Oct 08 01:17:29 2020
 Quant Method : Z:\VOASRV\HPCHEM1\MSVOA_U\METHOD\SFAMUL100620WMA.M
 Quant Title : VOC Analysis
 QLast Update : Wed Oct 07 08:04:20 2020
 Response via : Initial Calibration

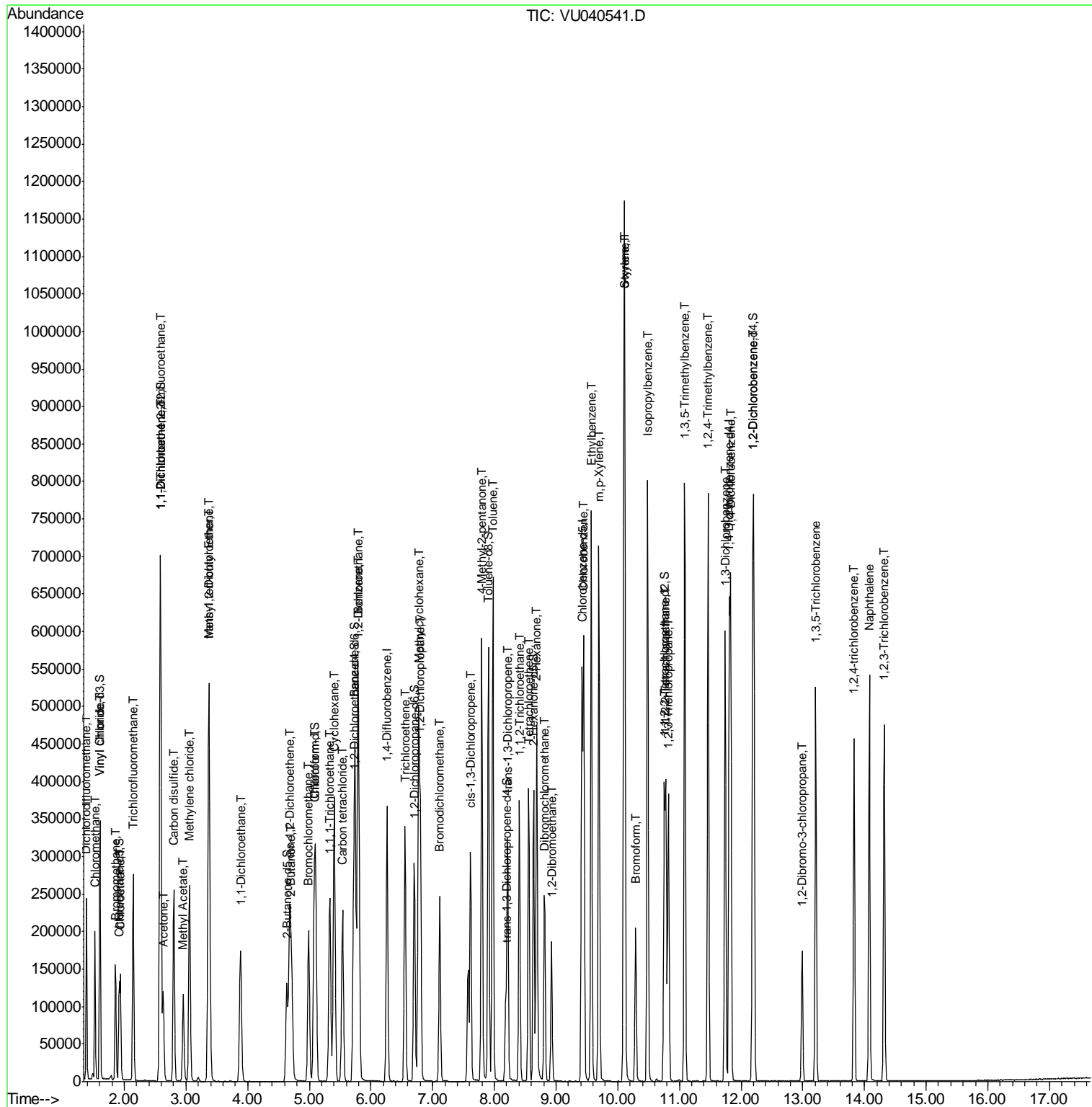
Internal Standards	R.T.	QIon	Response	Conc	Units	Dev(Min)
23) Bromochloromethane	4.99	128	57983	50.135	ug/L	97
25) Chloroform	5.11	83	206931	49.411	ug/L	97
27) 1,2-Dichloroethane	5.81	62	169541	49.055	ug/L	99
29) Cyclohexane	5.40	56	178435	48.678	ug/L	98
30) 1,1,1-Trichloroethane	5.33	97	174397	49.600	ug/L	99
31) Carbon tetrachloride	5.54	117	151115	49.702	ug/L	98
33) Benzene	5.79	78	437826	49.479	ug/L	100
34) Trichloroethene	6.55	95	111118	48.746	ug/L	98
35) Methylcyclohexane	6.77	83	167357	48.290	ug/L	99
37) 1,2-Dichloropropane	6.80	63	120966	49.782	ug/L	99
38) Bromodichloromethane	7.11	83	152691	48.376	ug/L	100
39) cis-1,3-Dichloropropene	7.61	75	165274	46.409	ug/L	99
40) 4-Methyl-2-pentanone	7.80	43	382679	99.806	ug/L	99
42) Toluene	7.98	91	461908	51.129	ug/L	98
44) trans-1,3-Dichloropropene	8.21	75	165556	46.172	ug/L	98
45) 1,1,2-Trichloroethane	8.40	97	108243	49.726	ug/L	98
46) Tetrachloroethene	8.56	164	79451	48.236	ug/L	97
48) 2-Hexanone	8.69	43	303759	97.473	ug/L	99
49) Dibromochloromethane	8.81	129	118802	49.982	ug/L	99
50) 1,2-Dibromoethane	8.93	107	115576	50.085	ug/L	97
51) Chlorobenzene	9.45	112	285567	48.193	ug/L	98
52) Ethylbenzene	9.57	91	501701	50.032	ug/L	98
53) m,p-Xylene	9.69	106	188972	51.177	ug/L	96
54) o-xylene	10.10	106	180100	51.265	ug/L	98
55) Styrene	10.11	104	323207	52.232	ug/L	98
57) 1,1,2,2-Tetrachloroethane	10.78	83	186606	48.476	ug/L	100
59) Bromoform	10.29	173	85948	49.401	ug/L	99
60) 1,2,3-Trichloropropane	10.82	75	153737	47.681	ug/L	99
61) Isopropylbenzene	10.48	105	470569	49.364	ug/L	99
62) 1,3,5-Trimethylbenzene	11.09	105	400851	51.181	ug/L	99
63) 1,2,4-Trimethylbenzene	11.47	105	403654	50.817	ug/L	99
64) 1,3-Dichlorobenzene	11.74	146	227953	49.042	ug/L	99
65) 1,4-Dichlorobenzene	11.83	146	231458	47.412	ug/L	99
67) 1,2-Dichlorobenzene	12.21	146	224850	48.289	ug/L	99
68) 1,2-Dibromo-3-chloropropan	12.99	75	42812	47.259	ug/L	95
69) 1,3,5-Trichlorobenzene	13.21	180	147744	48.512	ug/L	99
70) 1,2,4-trichlorobenzene	13.83	180	127042	48.129	ug/L	100
71) Naphthalene	14.08	128	389341	47.719	ug/L	99
72) 1,2,3-Trichlorobenzene	14.32	180	130788	49.917	ug/L	97

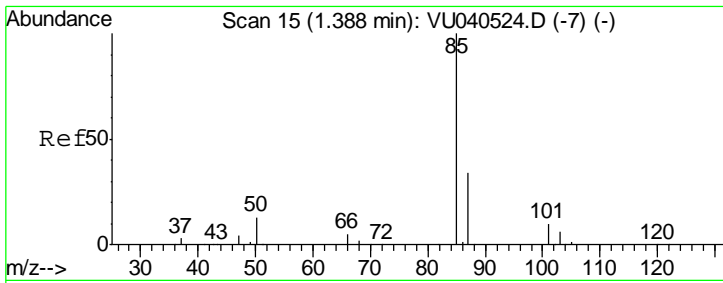
(#) = qualifier out of range (m) = manual integration (+) = signals summed

Data Path : Z:\VOASRV\HPCHEM1\MSVOA U\DATA\VU100720\
Data File : VU040541.D
Acq On : 07 Oct 2020 10:43
Operator : SY/MD
Sample : VSTDCCC050
Misc : 5.0mL/MSVOA U/WATER
ALS Vial : 2 Sample Multiplier: 1

Instrument :
MSVOA_U
Client Sampled :
VSTD050210

Quant Time: Oct 08 01:17:29 2020
Quant Method : Z:\VOASRV\HPCHEM1\MSVOA_U\METHOD\SFAMUL100620WMA.M
Quant Title : VOC Analysis
QLast Update : Wed Oct 07 08:04:20 2020
Response via : Initial Calibration

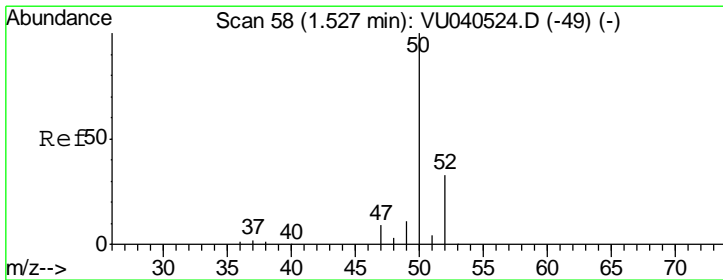
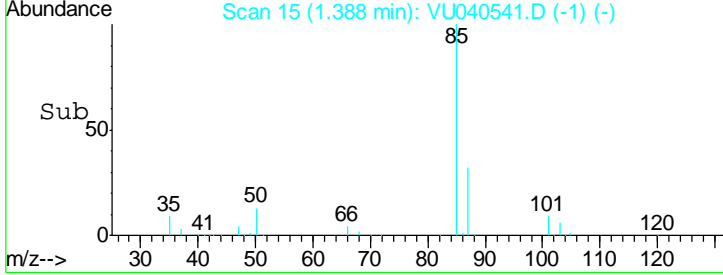
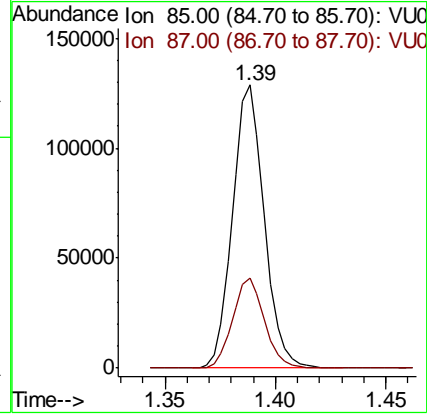
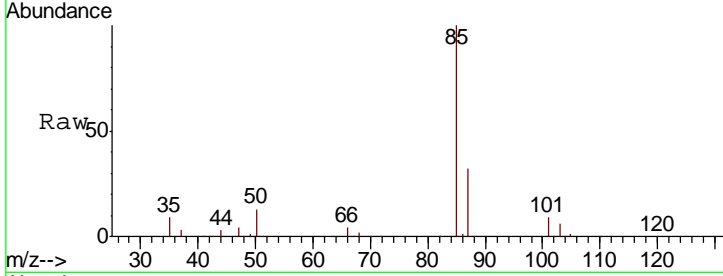




#2
 Dichlorodifluoromethane
 Concen: 48.786 ug/L
 RT: 1.39 min Scan# 15
 Delta R.T. -0.00 min
 Lab File: VU040541.D
 Acq: 07 Oct 2020 10:43

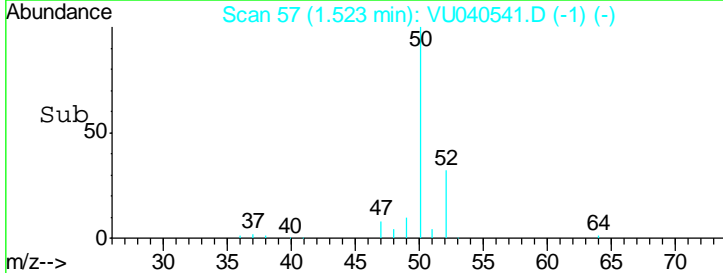
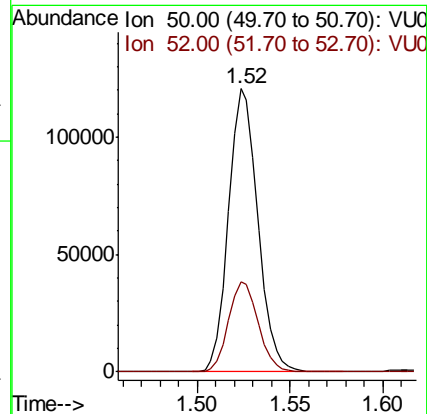
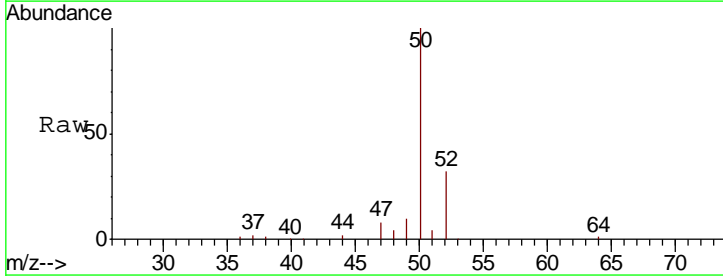
Instrument :
 MSVOA_U
 ClientSampleId :
 VSTD050210

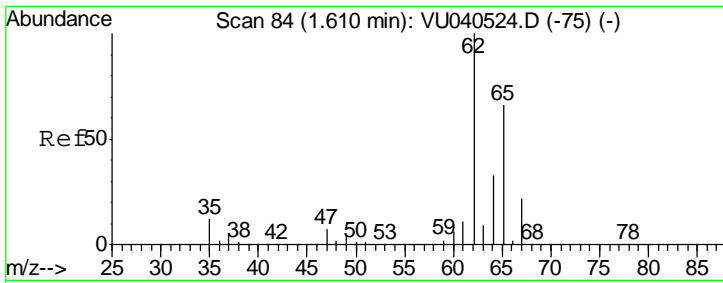
Tgt Ion: 85 Resp: 128239
 Ion Ratio Lower Upper
 85 100
 87 31.9 26.5 39.7



#3
 Chloromethane
 Concen: 47.871 ug/L
 RT: 1.52 min Scan# 57
 Delta R.T. -0.00 min
 Lab File: VU040541.D
 Acq: 07 Oct 2020 10:43

Tgt Ion: 50 Resp: 132232
 Ion Ratio Lower Upper
 50 100
 52 32.0 22.9 42.5

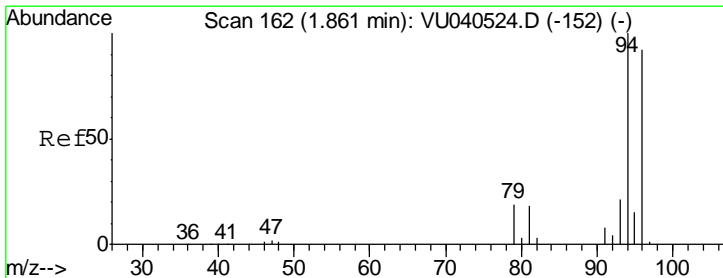
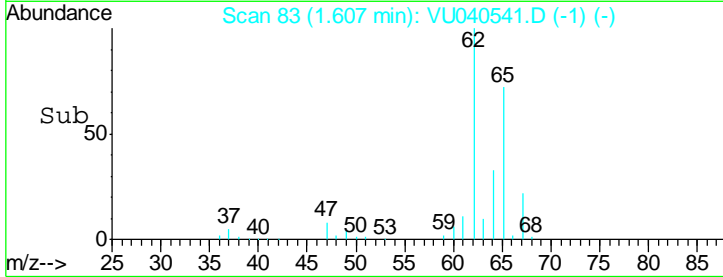
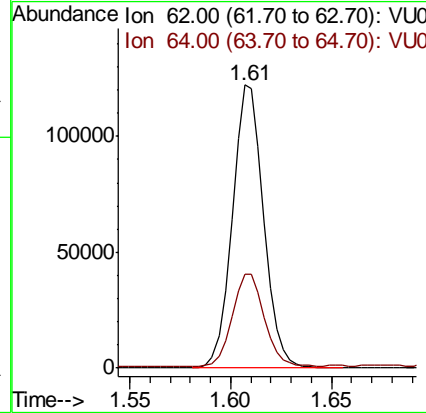
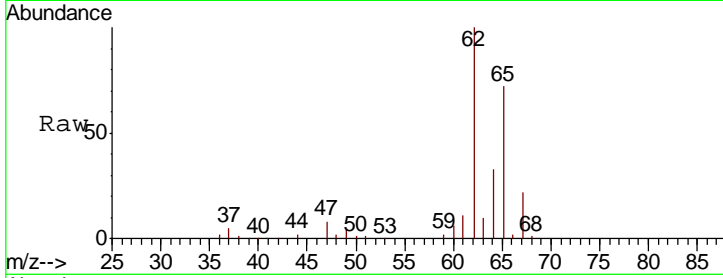




#5
 Vinyl chloride
 Concen: 48.371 ug/L
 RT: 1.61 min Scan# 83
 Delta R.T. -0.00 min
 Lab File: VU040541.D
 Acq: 07 Oct 2020 10:43

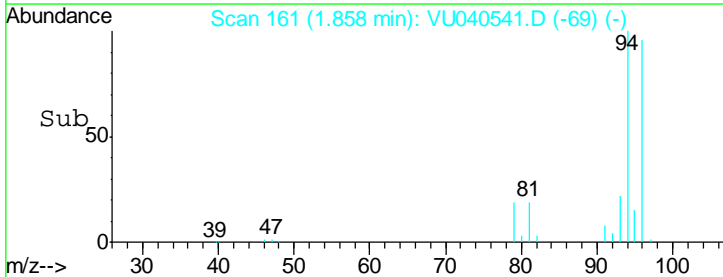
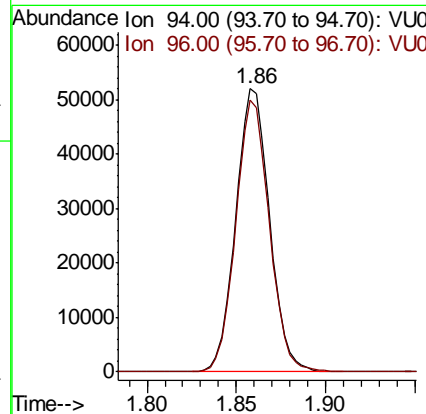
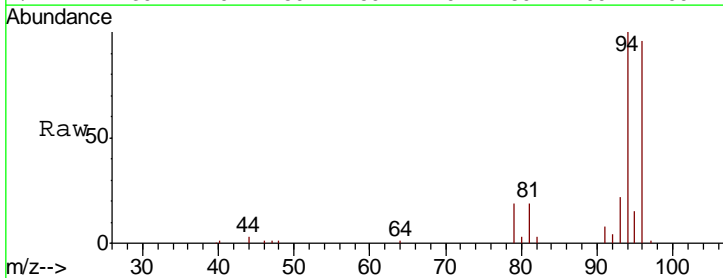
Instrument : MSVOA_U
 ClientSampled : VSTD050210

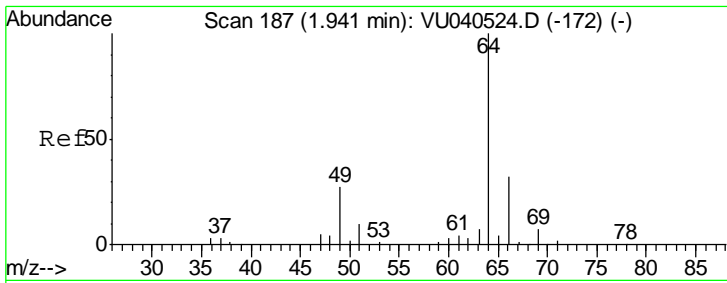
Tgt Ion	Resp	Lower	Upper
62	132287		
64	33.2	23.4	43.6



#6
 Bromomethane
 Concen: 47.653 ug/L
 RT: 1.86 min Scan# 161
 Delta R.T. -0.00 min
 Lab File: VU040541.D
 Acq: 07 Oct 2020 10:43

Tgt Ion	Resp	Lower	Upper
94	68404		
96	96.2	64.4	119.6

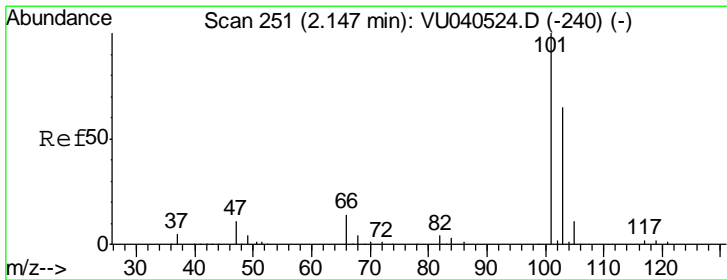
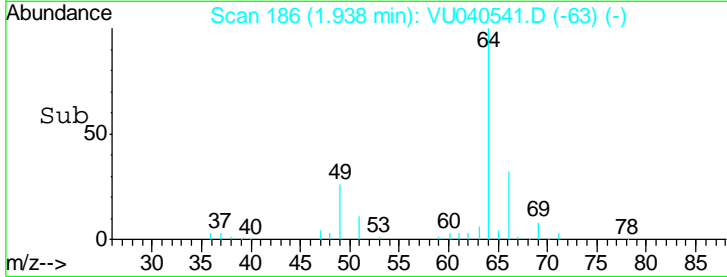
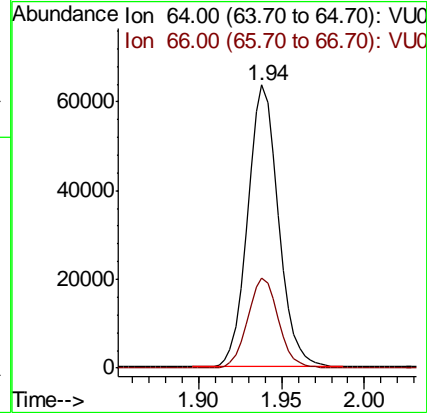
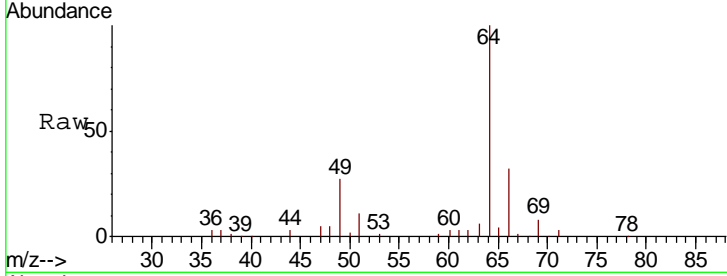




#8
 Chloroethane
 Concen: 49.473 ug/L
 RT: 1.94 min Scan# 186
 Delta R.T. -0.00 min
 Lab File: VU040541.D
 Acq: 07 Oct 2020 10:43

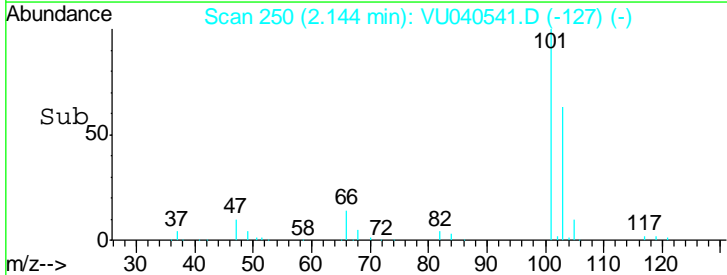
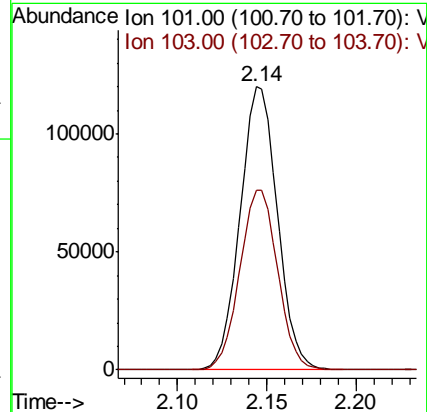
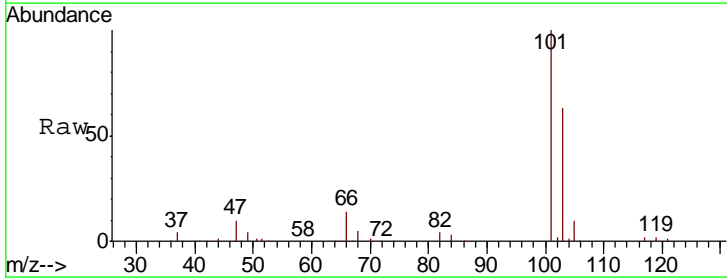
Instrument :
 MSVOA_U
 ClientSampled :
 VSTD050210

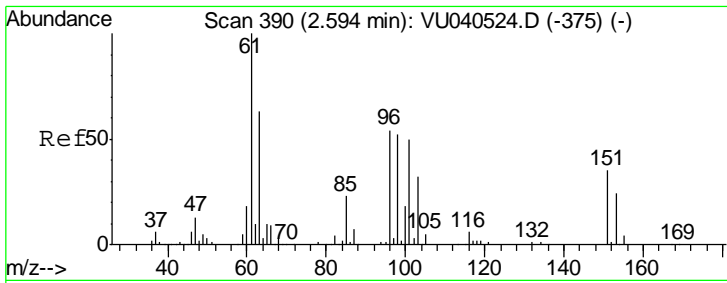
Tgt Ion: 64 Resp: 81635
 Ion Ratio Lower Upper
 64 100
 66 31.8 22.5 41.9



#9
 Trichlorofluoromethane
 Concen: 49.862 ug/L
 RT: 2.14 min Scan# 250
 Delta R.T. -0.00 min
 Lab File: VU040541.D
 Acq: 07 Oct 2020 10:43

Tgt Ion: 101 Resp: 174923
 Ion Ratio Lower Upper
 101 100
 103 64.3 52.1 78.1





#10

1,1,2-Trichloro-1,2,2-trifluoroethane

Concen: 49.526 ug/L

RT: 2.59 min Scan# 389

Delta R.T. -0.00 min

Lab File: VU040541.D

Acq: 07 Oct 2020 10:43

Instrument :

MSVOA_U

ClientSampled :

VSTD050210

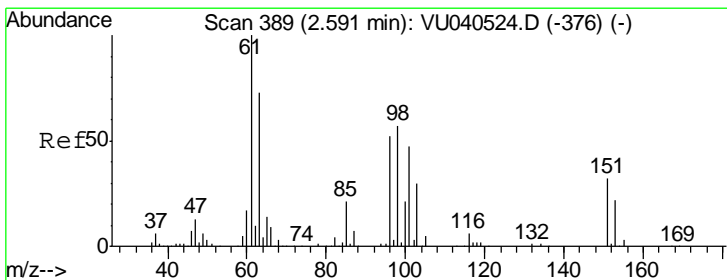
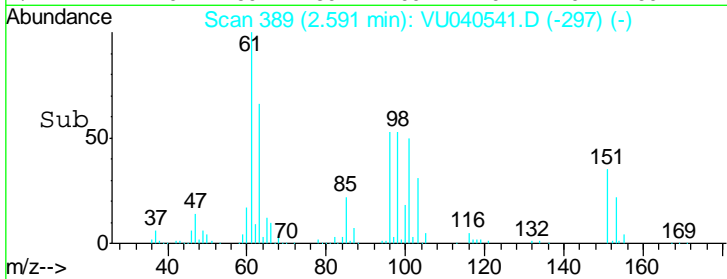
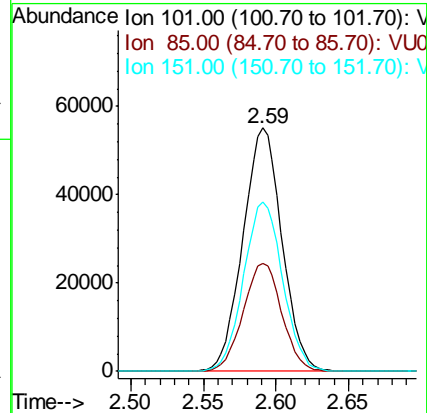
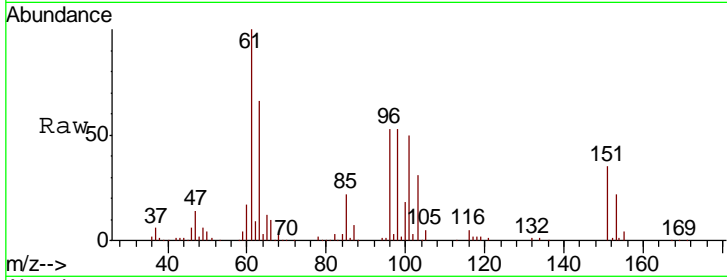
Tot Ion:101 Resp: 103569

Ion Ratio Lower Upper

101 100

85 43.9 35.4 53.2

151 69.5 54.8 82.2



#12

1,1-Dichloroethene

Concen: 49.821 ug/L

RT: 2.59 min Scan# 389

Delta R.T. -0.00 min

Lab File: VU040541.D

Acq: 07 Oct 2020 10:43

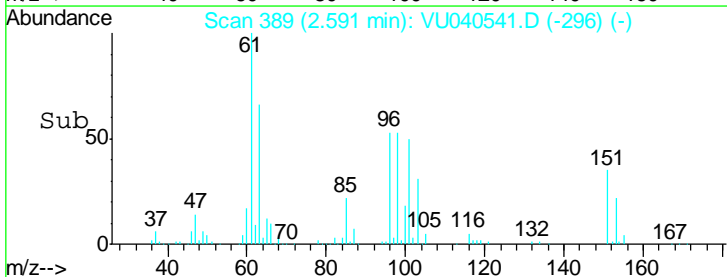
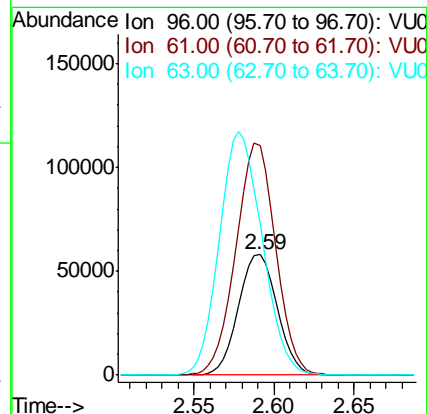
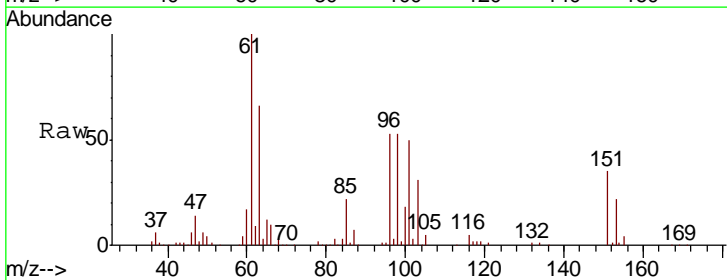
Tgt Ion: 96 Resp: 96326

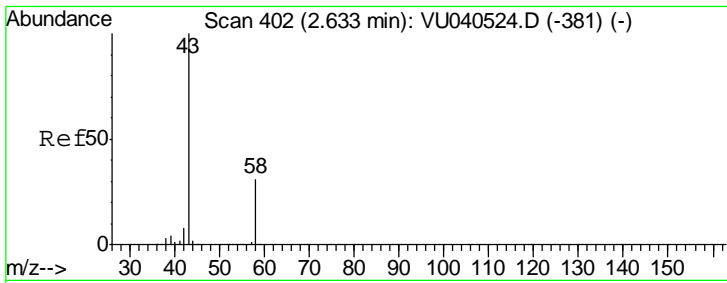
Ion Ratio Lower Upper

96 100

61 190.4 135.0 250.8

63 125.8 101.4 188.2

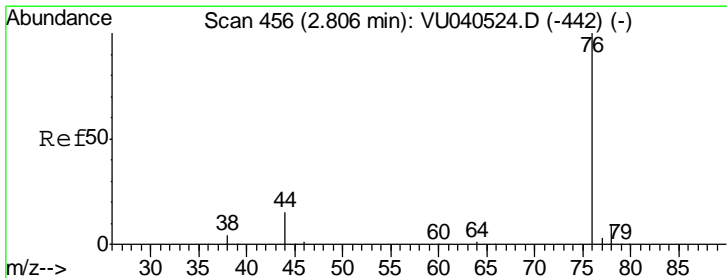
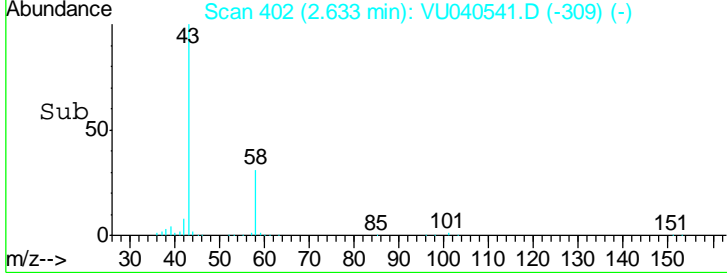
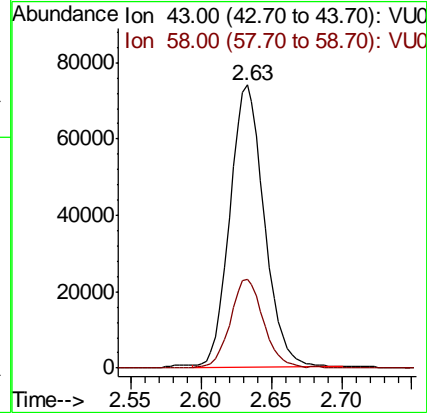
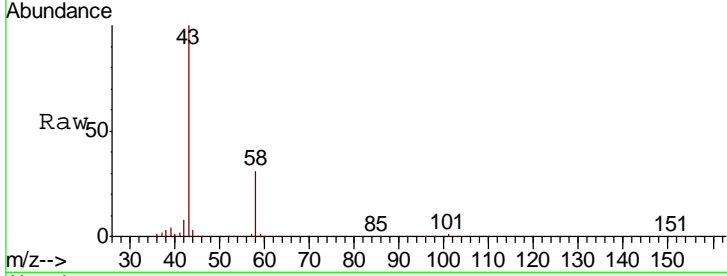




#13
 Acetone
 Concen: 70.419 ug/L
 RT: 2.63 min Scan# 402
 Delta R.T. -0.00 min
 Lab File: VU040541.D
 Acq: 07 Oct 2020 10:43

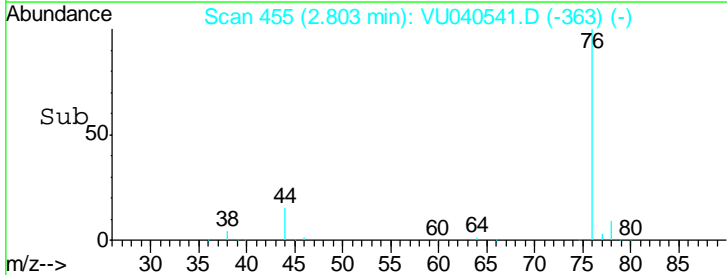
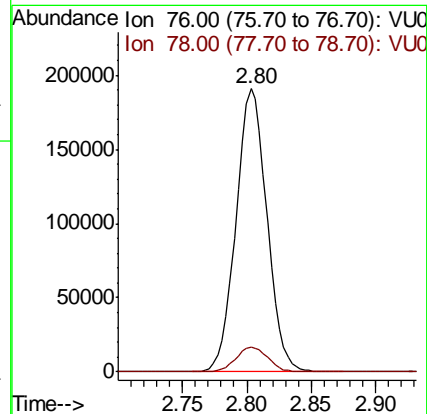
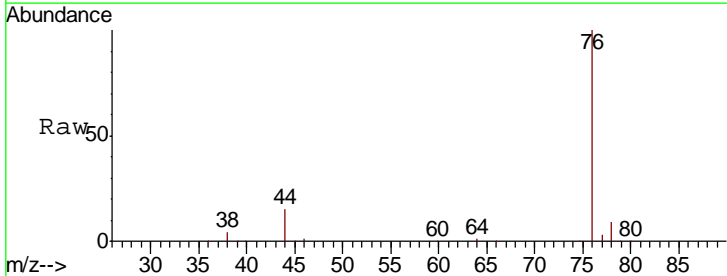
Instrument :
 MSVOA_U
ClientSampled :
 VSTD050210

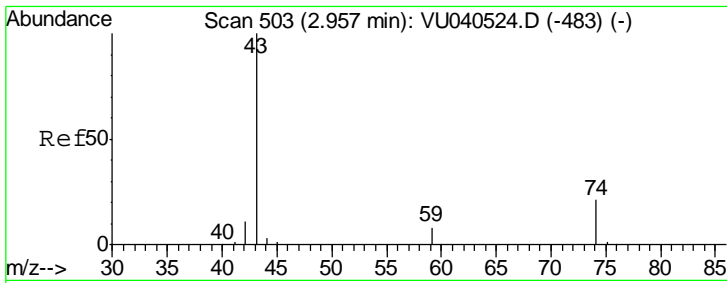
Tgt Ion	Resp	Lower	Upper
43	125823		
58	30.7	0.0	60.2



#14
 Carbon disulfide
 Concen: 47.896 ug/L
 RT: 2.80 min Scan# 456
 Delta R.T. -0.00 min
 Lab File: VU040541.D
 Acq: 07 Oct 2020 10:43

Tgt Ion	Resp	Lower	Upper
76	317916		
78	8.6	7.4	11.0

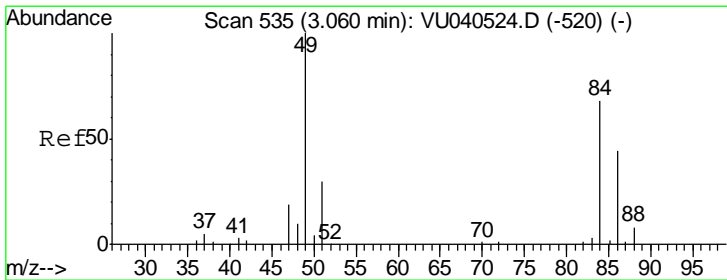
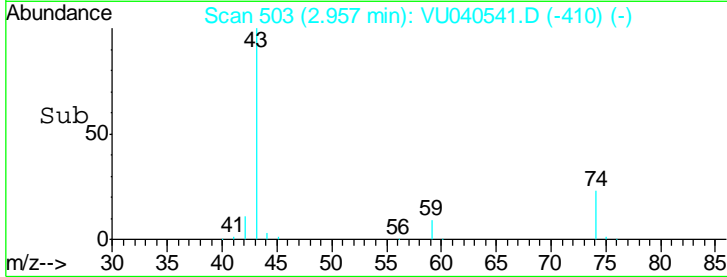
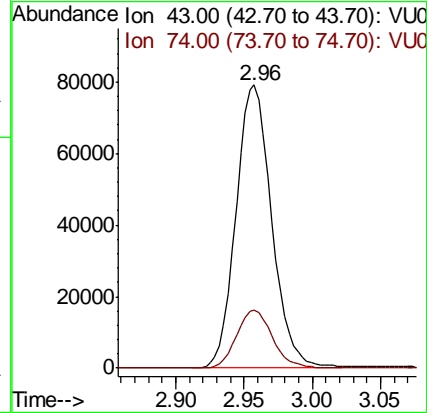
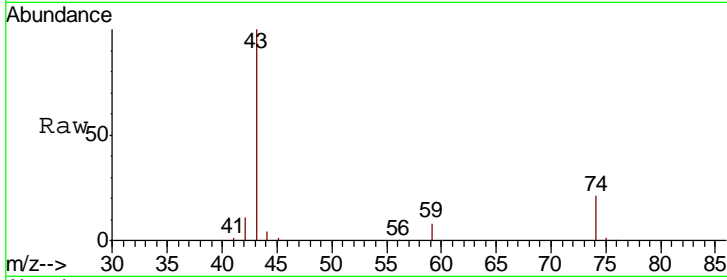




#15
 Methyl Acetate
 Concen: 49.411 ug/L
 RT: 2.96 min Scan# 503
 Delta R.T. -0.00 min
 Lab File: VU040541.D
 Acq: 07 Oct 2020 10:43

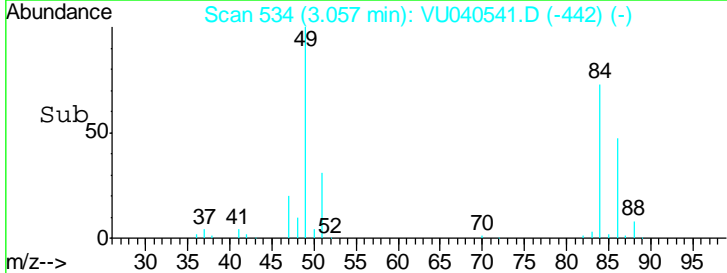
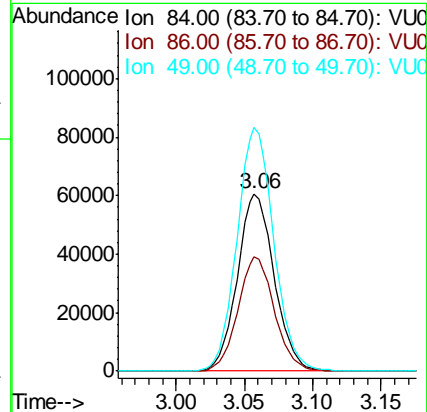
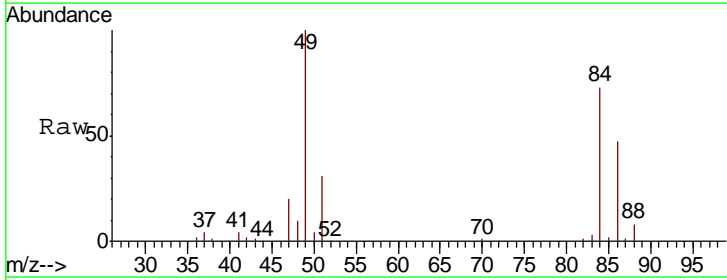
Instrument :
 MSVOA_U
 ClientSampled :
 VSTD050210

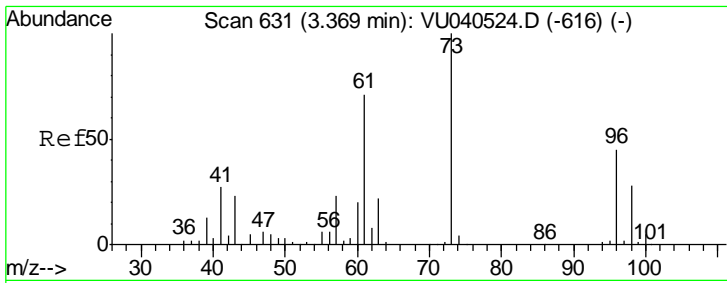
Tgt Ion	Resp	Lower	Upper
43	100		
74	20.7	16.4	24.6



#16
 Methylene chloride
 Concen: 49.430 ug/L
 RT: 3.06 min Scan# 534
 Delta R.T. -0.00 min
 Lab File: VU040541.D
 Acq: 07 Oct 2020 10:43

Tgt Ion	Resp	Lower	Upper
84	100		
86	64.5	45.4	84.4
49	137.5	102.9	191.1

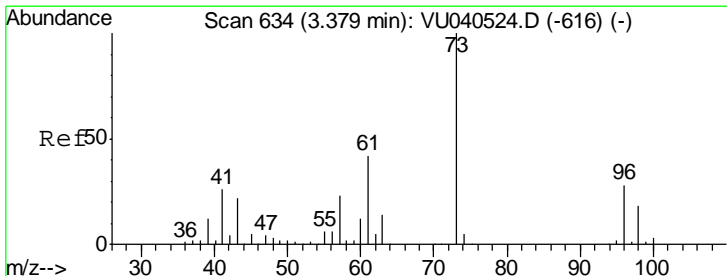
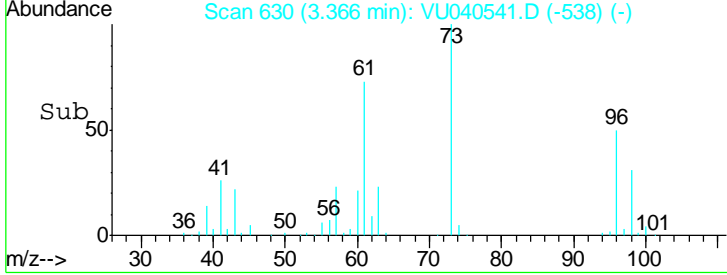
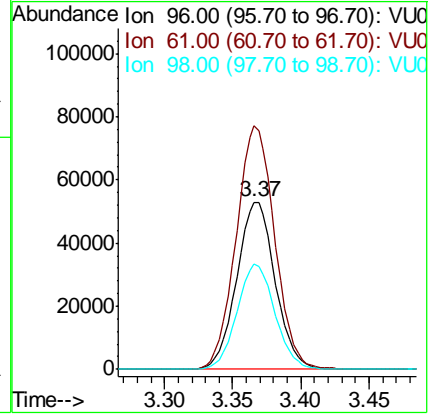
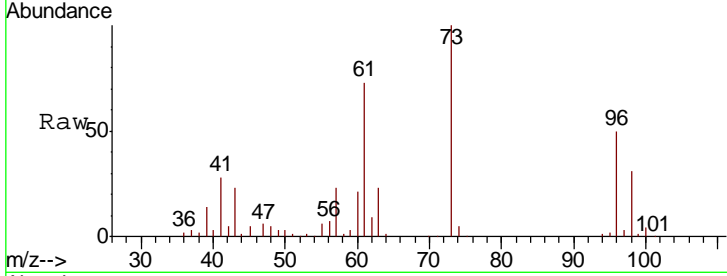




#17
 trans-1,2-Dichloroethene
 Concen: 50.284 ug/L
 RT: 3.37 min Scan# 630
 Delta R.T. -0.00 min
 Lab File: VU040541.D
 Acq: 07 Oct 2020 10:43

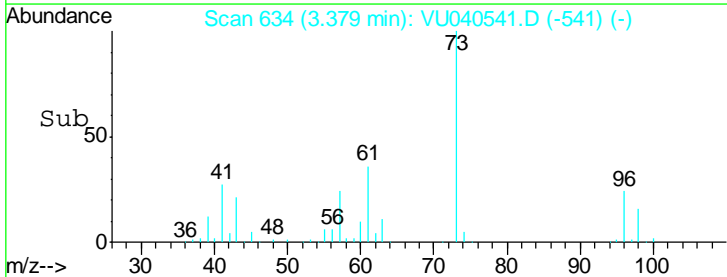
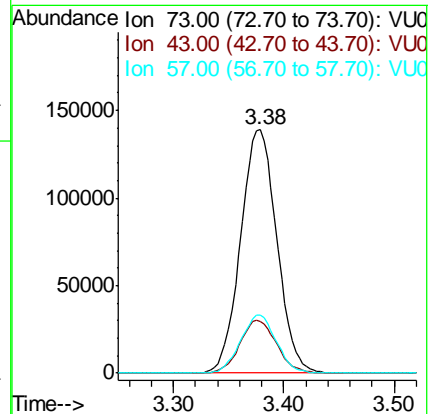
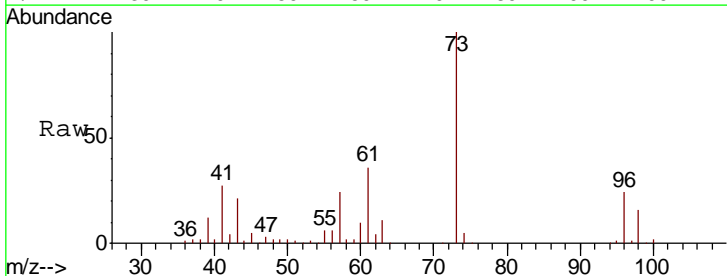
Instrument :
 MSVOA_U
ClientSampled :
 VSTD050210

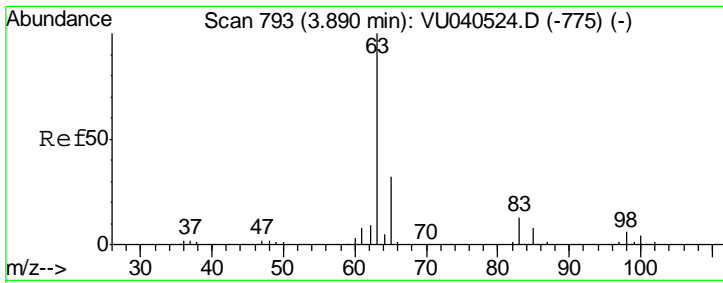
Tgt Ion	Resp	Lower	Upper
96	103549		
61	145.5	109.6	203.6
98	62.7	43.3	80.3



#18
 Methyl tert-butyl Ether
 Concen: 48.810 ug/L
 RT: 3.38 min Scan# 634
 Delta R.T. -0.00 min
 Lab File: VU040541.D
 Acq: 07 Oct 2020 10:43

Tgt Ion	Resp	Lower	Upper
73	316145		
43	22.1	18.2	27.2
57	23.5	18.5	27.7

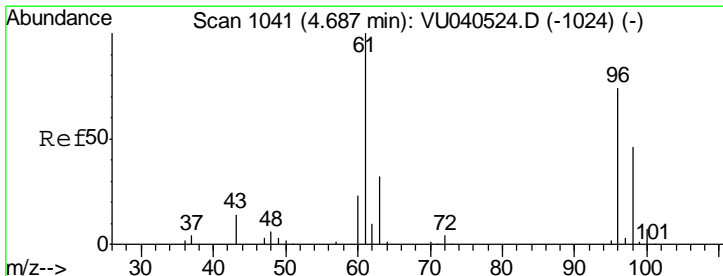
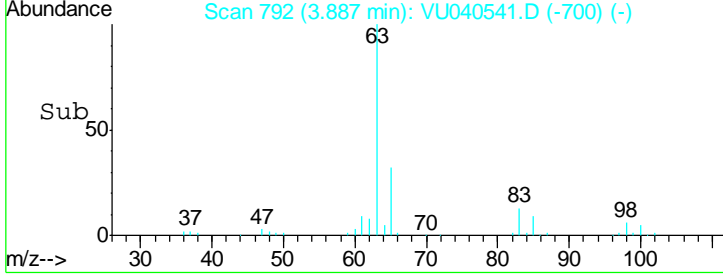
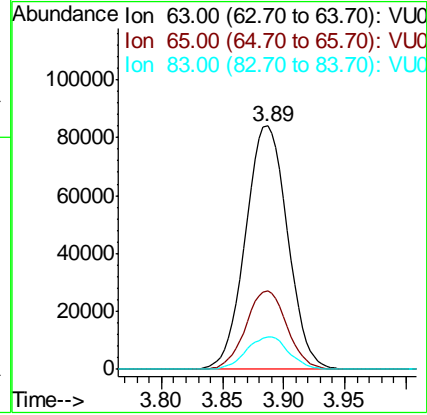
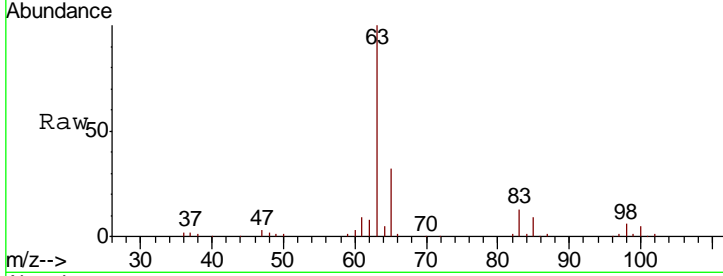




#19
 1,1-Dichloroethane
 Concen: 48.820 ug/L
 RT: 3.89 min Scan# 792
 Delta R.T. -0.00 min
 Lab File: VU040541.D
 Acq: 07 Oct 2020 10:43

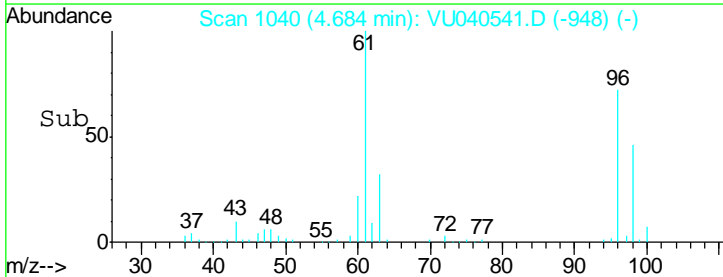
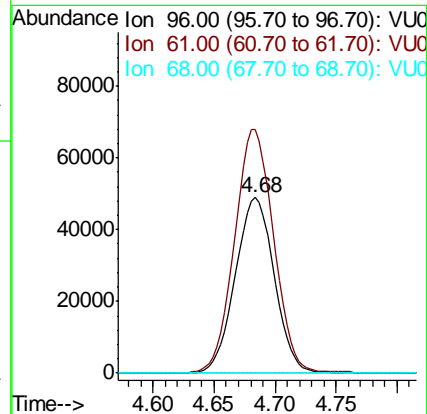
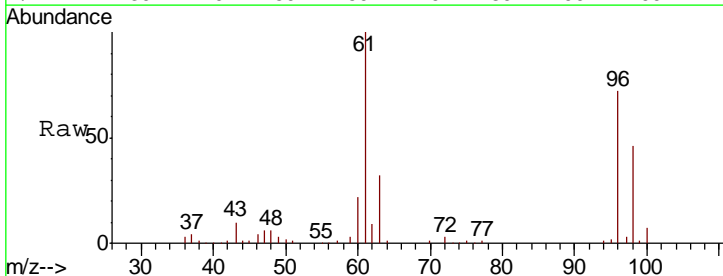
Instrument : MSVOA_U
 ClientSampleId : VSTD050210

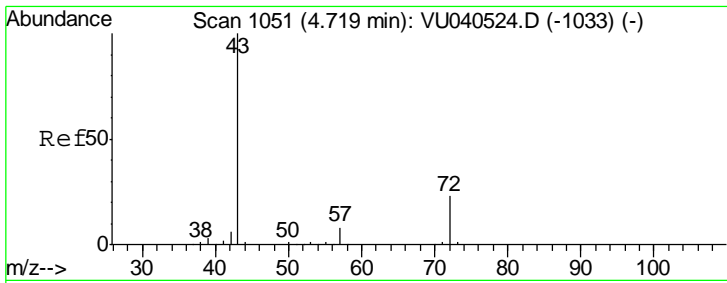
Tgt Ion	Resp	Lower	Upper
63	100		
65	32.2	22.6	42.0
83	13.3	9.1	16.9



#20
 cis-1,2-Dichloroethene
 Concen: 48.874 ug/L
 RT: 4.68 min Scan# 1040
 Delta R.T. -0.00 min
 Lab File: VU040541.D
 Acq: 07 Oct 2020 10:43

Tgt Ion	Resp	Lower	Upper
96	100		
61	138.9	95.7	177.7
68	0.0	0.0	0.0

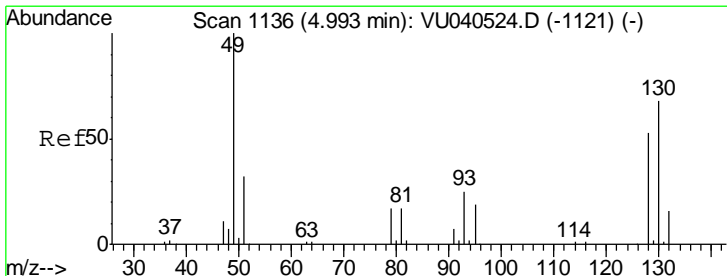
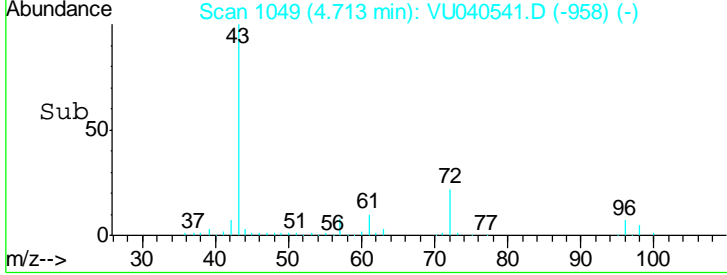
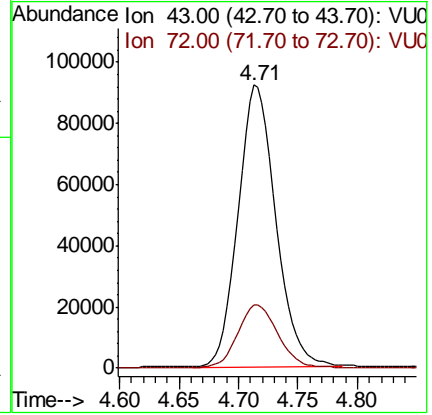
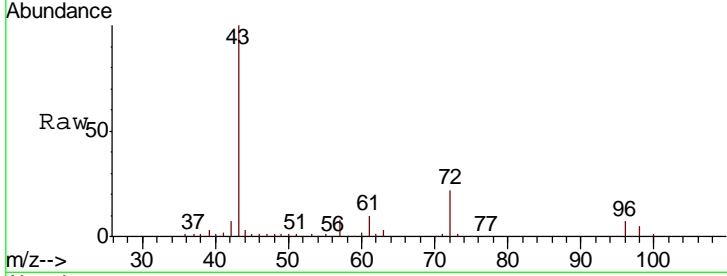




#22
 2-Butanone
 Concen: 89.189 ug/L
 RT: 4.71 min Scan# 1049
 Delta R.T. -0.01 min
 Lab File: VU040541.D
 Acq: 07 Oct 2020 10:43

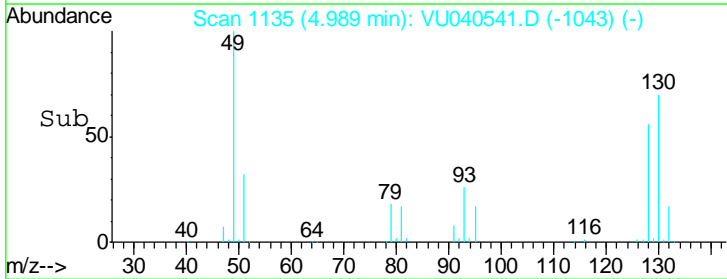
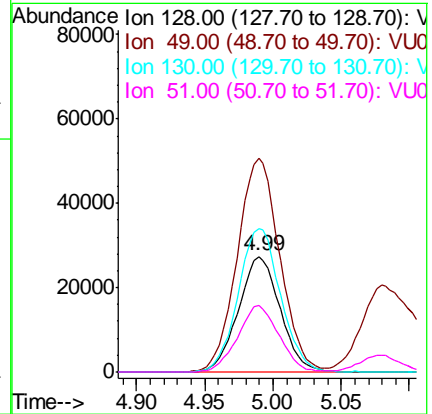
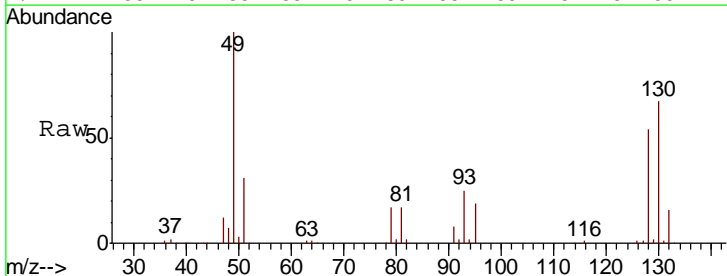
Instrument :
 MSVOA_U
ClientSampled :
 VSTD050210

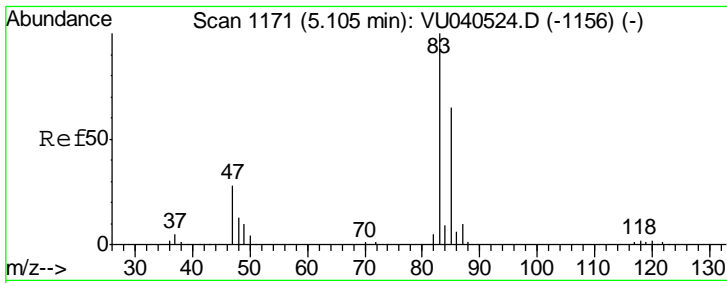
Tgt Ion	Resp	Lower	Upper
43	100		
72	23.9	11.9	35.9



#23
 Bromochloromethane
 Concen: 50.135 ug/L
 RT: 4.99 min Scan# 1135
 Delta R.T. -0.00 min
 Lab File: VU040541.D
 Acq: 07 Oct 2020 10:43

Tgt Ion	Resp	Lower	Upper
128	100		
49	185.3	133.1	247.3
130	124.9	90.5	168.1
51	57.9	48.4	72.6

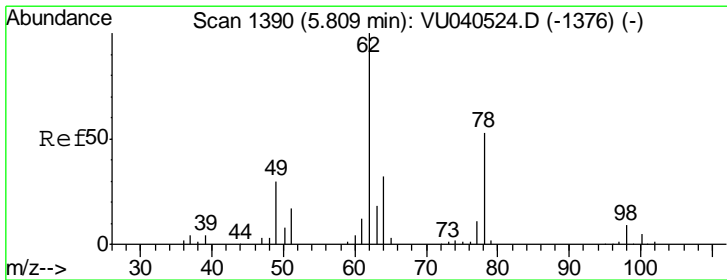
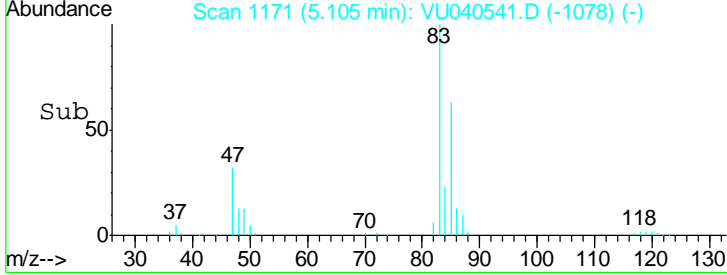
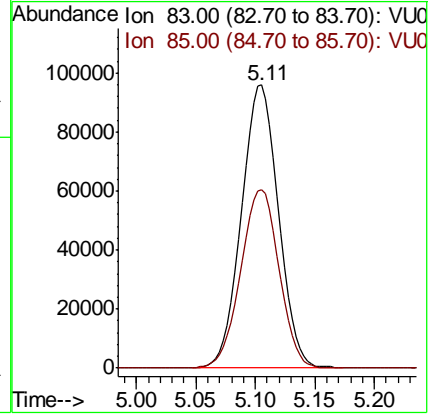
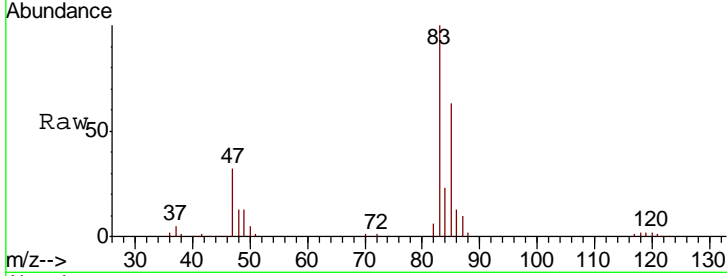




#25
 Chloroform
 Concen: 49.411 ug/L
 RT: 5.11 min Scan# 1171
 Delta R.T. -0.00 min
 Lab File: VU040541.D
 Acq: 07 Oct 2020 10:43

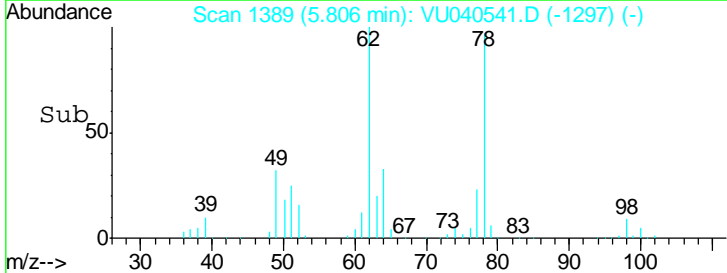
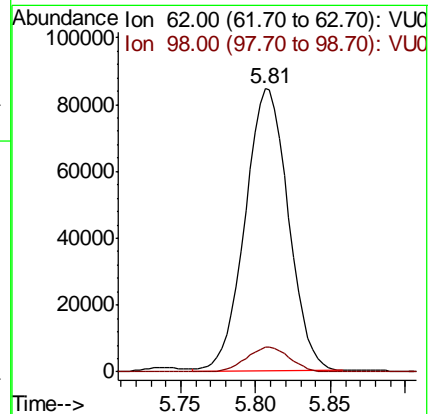
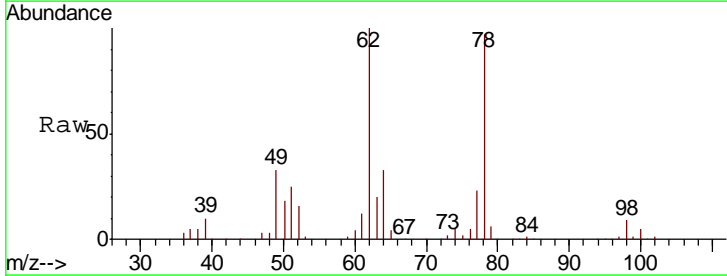
Instrument : MSVOA_U
 ClientSampled : VSTD050210

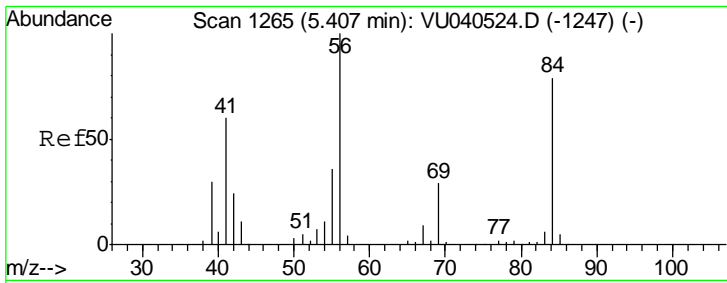
Tgt Ion	Resp	Lower	Upper
83	206931		
85	63.2	45.6	84.8



#27
 1,2-Dichloroethane
 Concen: 49.055 ug/L
 RT: 5.81 min Scan# 1389
 Delta R.T. -0.00 min
 Lab File: VU040541.D
 Acq: 07 Oct 2020 10:43

Tgt Ion	Resp	Lower	Upper
62	169541		
98	8.7	7.1	10.7

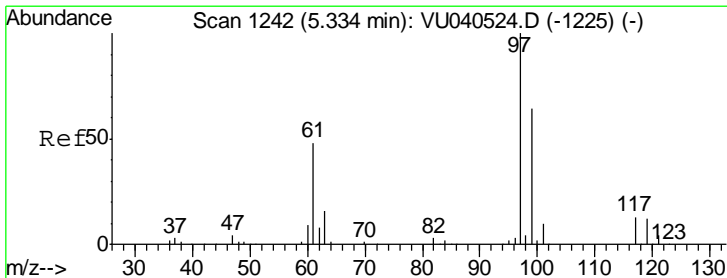
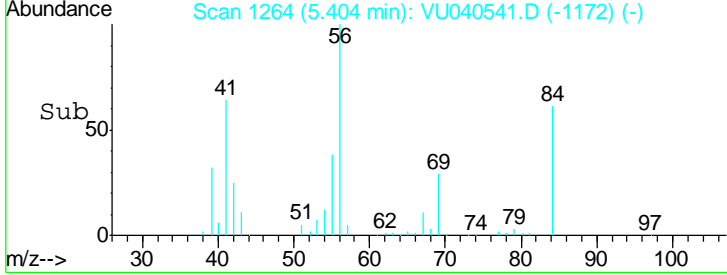
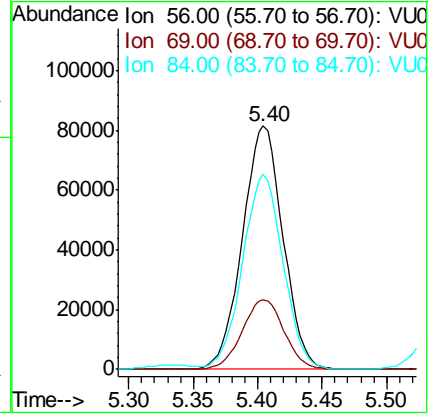
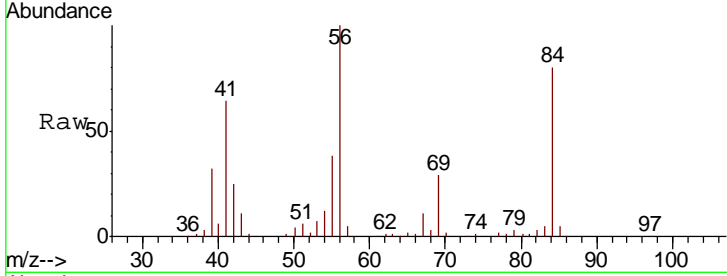




#29
 Cyclohexane
 Concen: 48.678 ug/L
 RT: 5.40 min Scan# 1264
 Delta R.T. -0.00 min
 Lab File: VU040541.D
 Acq: 07 Oct 2020 10:43

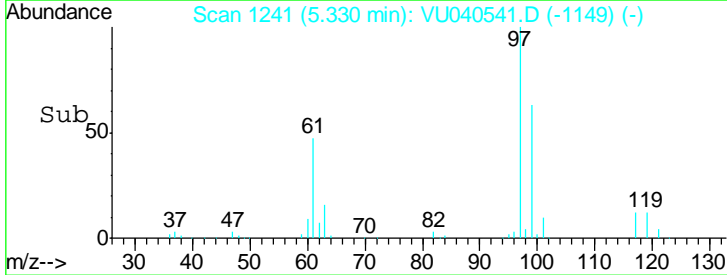
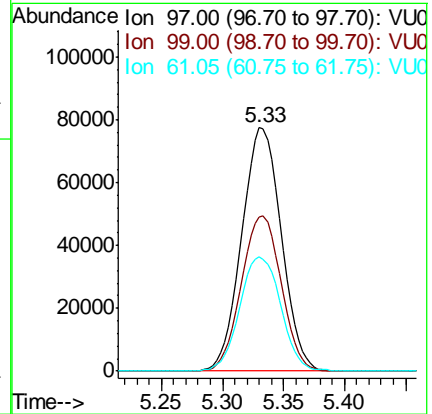
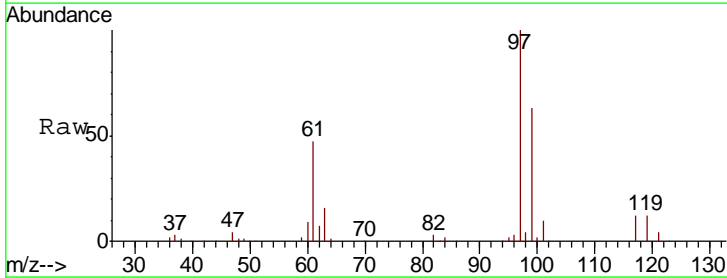
Instrument : MSVOA_U
 ClientSampled : VSTD050210

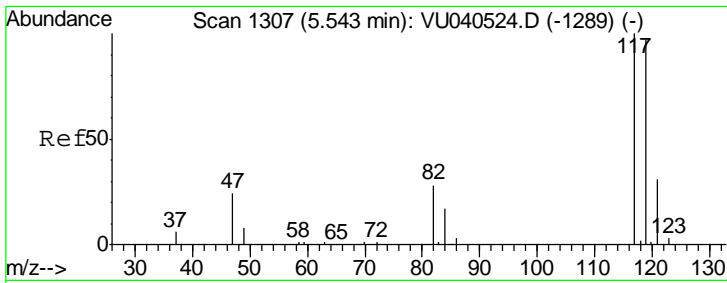
Tgt Ion	Resp	Lower	Upper
56	178435		
69	29.4	22.6	34.0
84	80.0	63.1	94.7



#30
 1,1,1-Trichloroethane
 Concen: 49.600 ug/L
 RT: 5.33 min Scan# 1241
 Delta R.T. -0.00 min
 Lab File: VU040541.D
 Acq: 07 Oct 2020 10:43

Tgt Ion	Resp	Lower	Upper
97	174397		
99	64.3	51.0	76.6
61	48.7	39.4	59.2

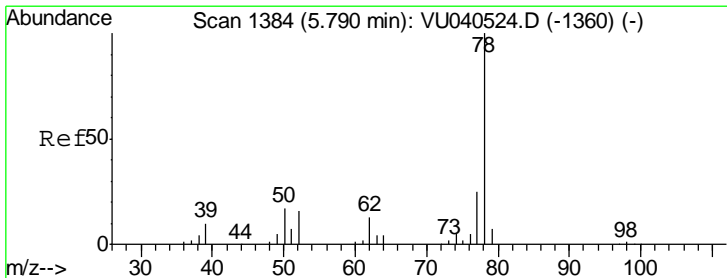
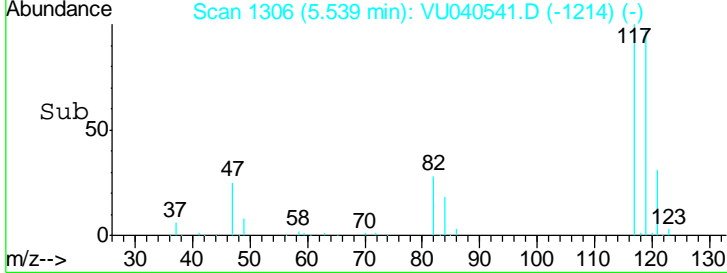
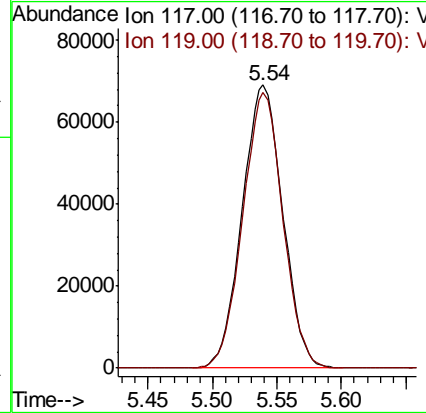
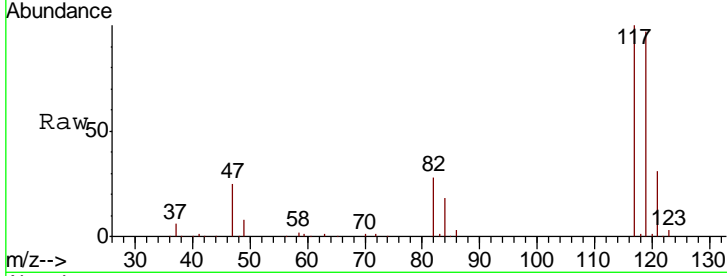




#31
 Carbon tetrachloride
 Concen: 49.702 ug/L
 RT: 5.54 min Scan# 1306
 Delta R.T. -0.00 min
 Lab File: VU040541.D
 Acq: 07 Oct 2020 10:43

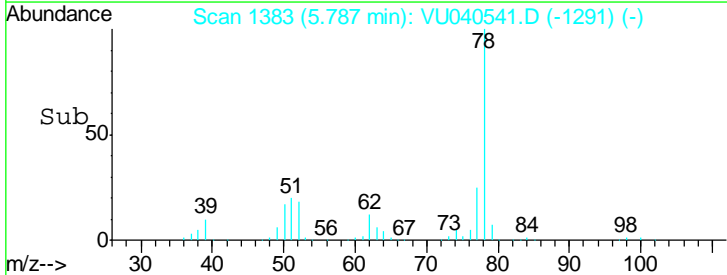
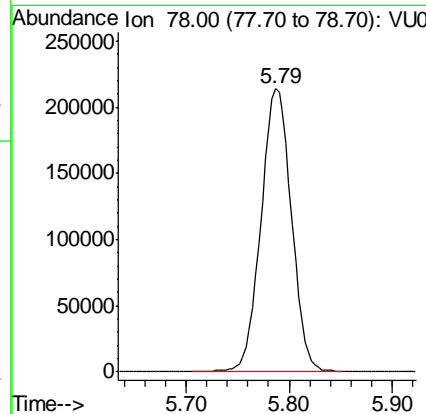
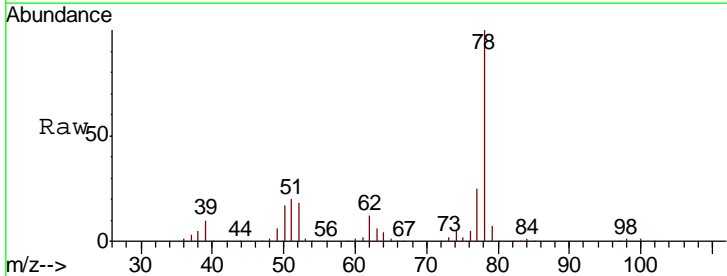
Instrument : MSVOA_U
 ClientSampled : VSTD050210

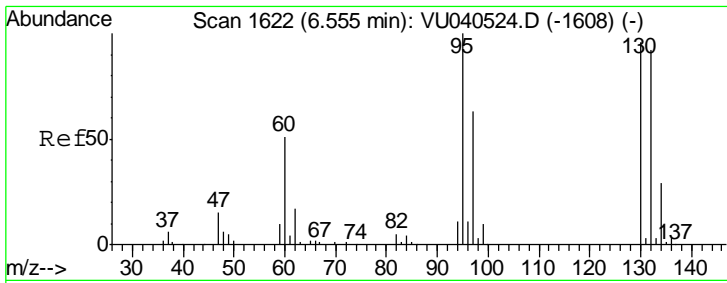
Tgt Ion: 117 Resp: 151115
 Ion Ratio Lower Upper
 117 100
 119 96.3 75.8 113.6



#33
 Benzene
 Concen: 49.479 ug/L
 RT: 5.79 min Scan# 1383
 Delta R.T. -0.00 min
 Lab File: VU040541.D
 Acq: 07 Oct 2020 10:43

Tgt Ion: 78 Resp: 437826

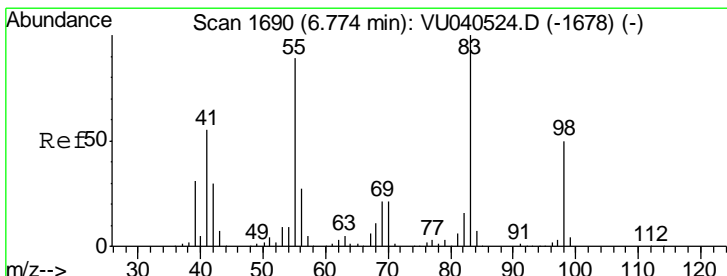
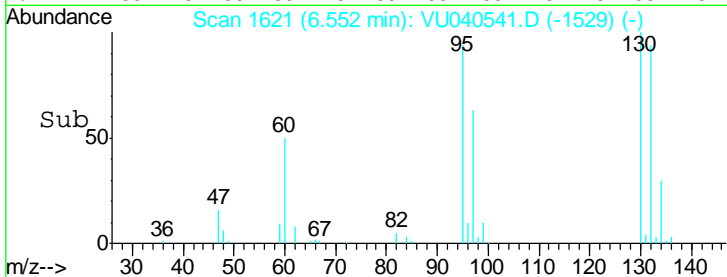
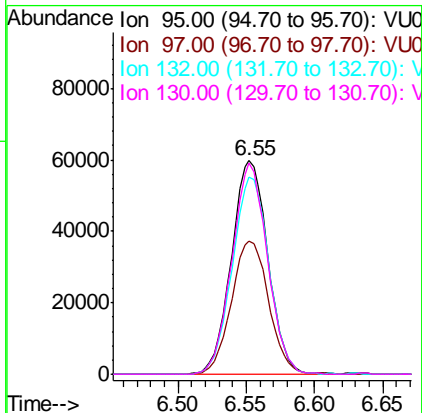
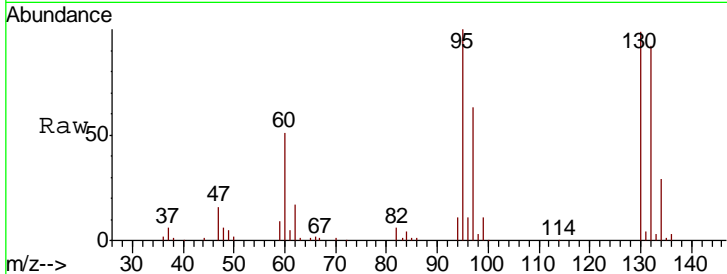




#34
 Trichloroethene
 Concen: 48.746 ug/L
 RT: 6.55 min Scan# 1621
 Delta R.T. -0.00 min
 Lab File: VU040541.D
 Acq: 07 Oct 2020 10:43

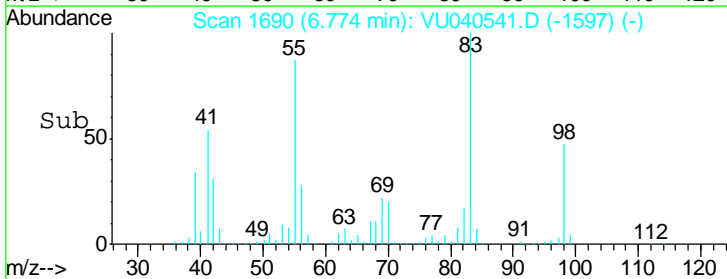
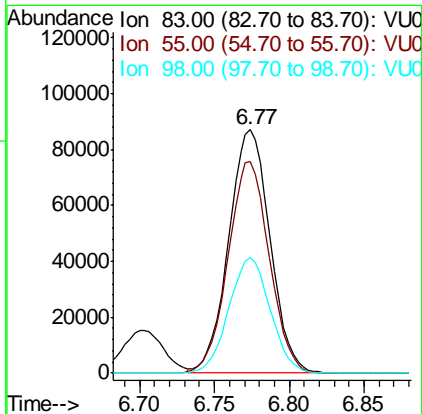
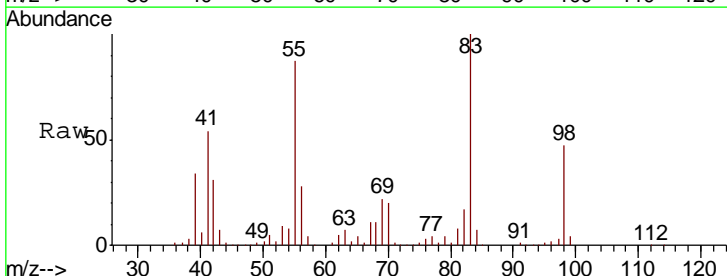
Instrument :
 MSVOA_U
 ClientSampled :
 VSTD050210

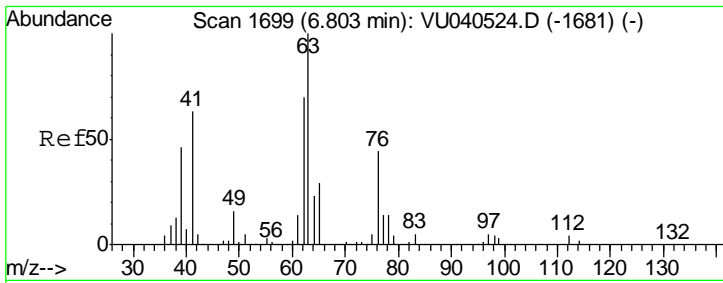
Tgt Ion	Resp	Lower	Upper
95	111118		
97	62.5	44.3	82.3
132	92.5	64.2	119.2
130	98.8	67.3	125.1



#35
 Methylcyclohexane
 Concen: 48.290 ug/L
 RT: 6.77 min Scan# 1690
 Delta R.T. -0.00 min
 Lab File: VU040541.D
 Acq: 07 Oct 2020 10:43

Tgt Ion	Resp	Lower	Upper
83	167357		
55	86.8	69.8	104.8
98	47.5	39.1	58.7

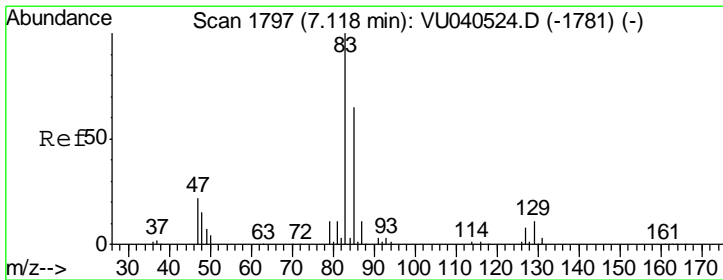
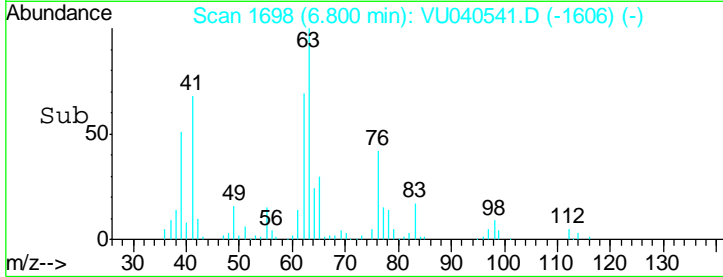
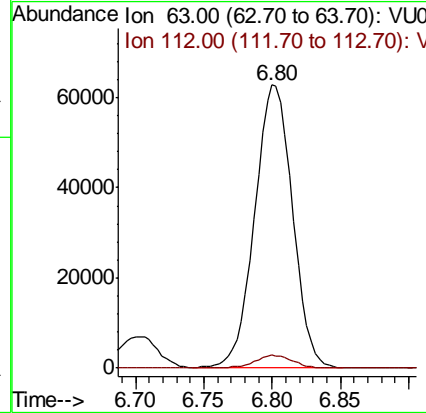
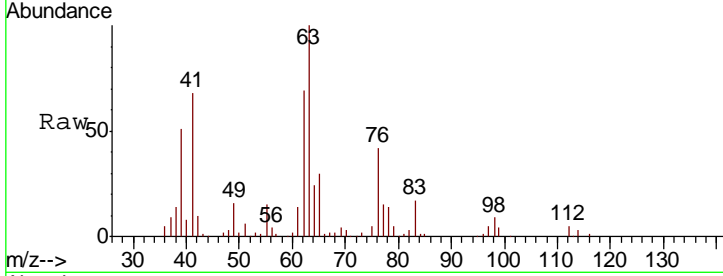




#37
 1,2-Dichloropropane
 Concen: 49.782 ug/L
 RT: 6.80 min Scan# 1698
 Delta R.T. -0.00 min
 Lab File: VU040541.D
 Acq: 07 Oct 2020 10:43

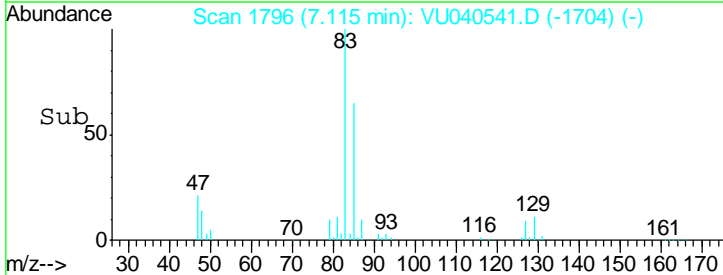
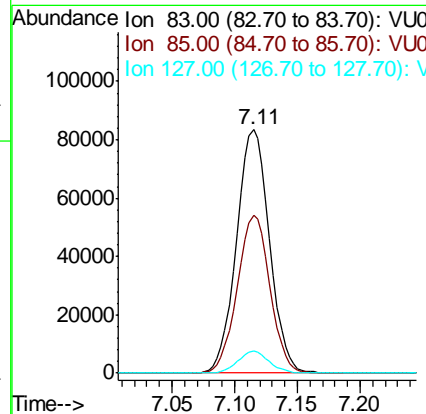
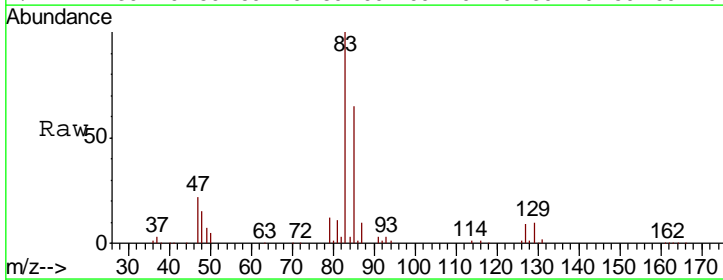
Instrument :
 MSVOA_U
 ClientSampled :
 VSTD050210

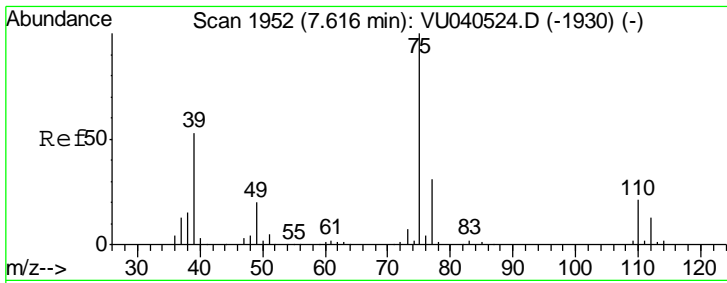
Tgt Ion: 63 Resp: 120966
 Ion Ratio Lower Upper
 63 100
 112 4.6 3.5 5.3



#38
 Bromodichloromethane
 Concen: 48.376 ug/L
 RT: 7.11 min Scan# 1796
 Delta R.T. -0.00 min
 Lab File: VU040541.D
 Acq: 07 Oct 2020 10:43

Tgt Ion: 83 Resp: 152691
 Ion Ratio Lower Upper
 83 100
 85 64.8 45.2 84.0
 127 9.0 6.7 10.1

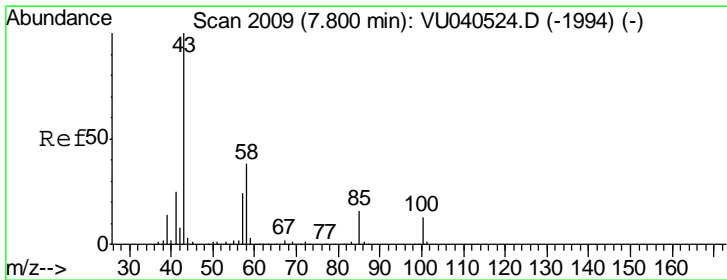
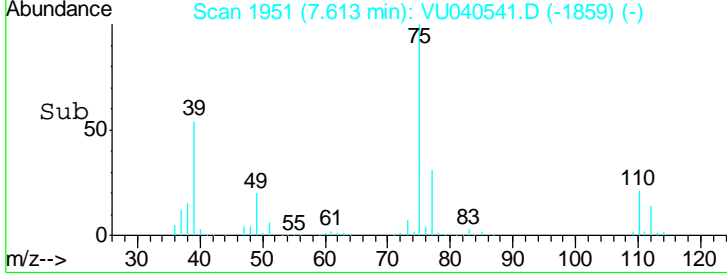
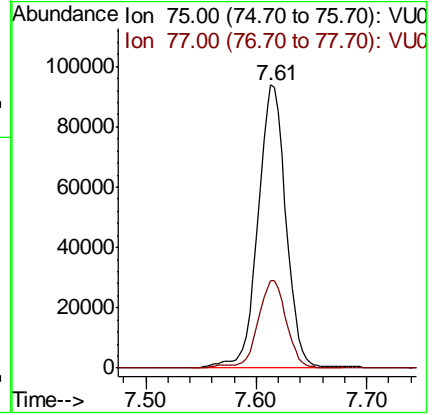
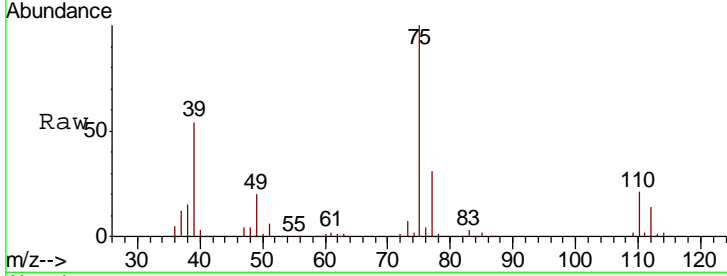




#39
 cis-1,3-Dichloropropene
 Concen: 46.409 ug/L
 RT: 7.61 min Scan# 1951
 Delta R.T. -0.00 min
 Lab File: VU040541.D
 Acq: 07 Oct 2020 10:43

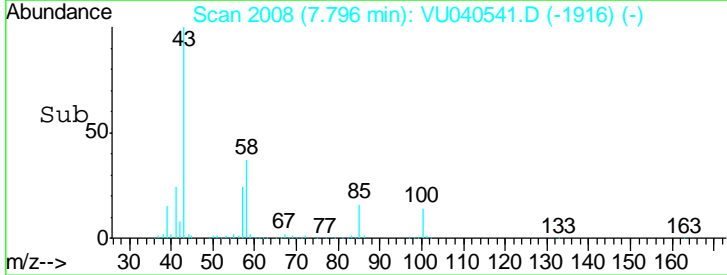
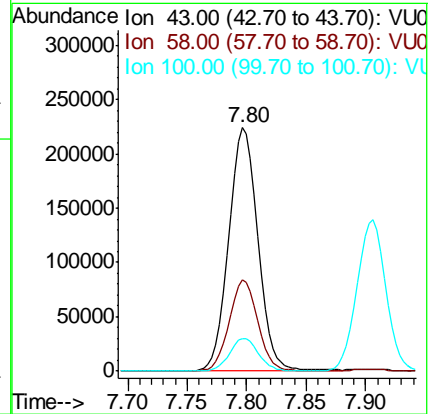
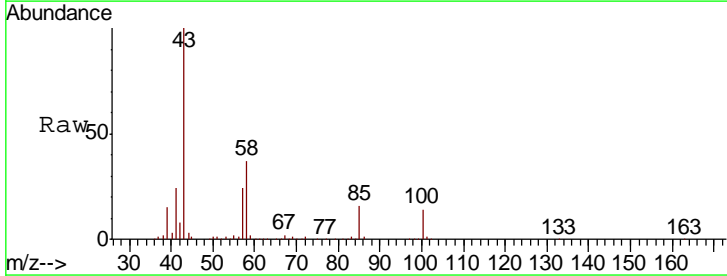
Instrument : MSVOA_U
 ClientSampled : VSTD050210

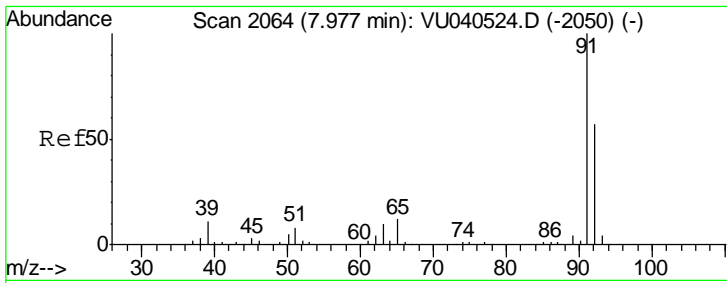
Tgt Ion	Resp	Lower	Upper
75	165274		
77	31.0	21.4	39.8



#40
 4-Methyl-2-pentanone
 Concen: 99.806 ug/L
 RT: 7.80 min Scan# 2008
 Delta R.T. -0.00 min
 Lab File: VU040541.D
 Acq: 07 Oct 2020 10:43

Tgt Ion	Resp	Lower	Upper
43	382679		
58	36.5	29.7	44.5
100	13.5	10.5	15.7

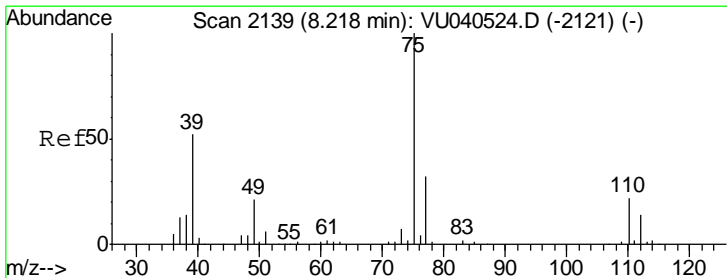
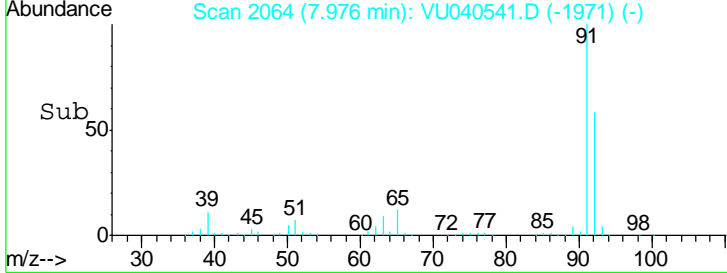
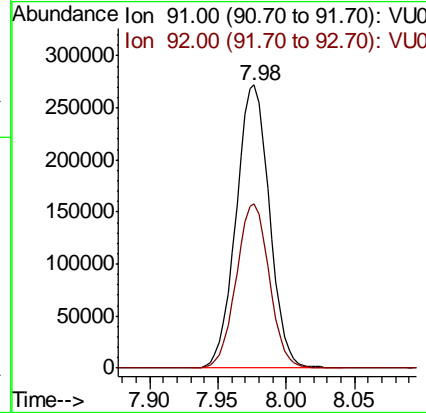
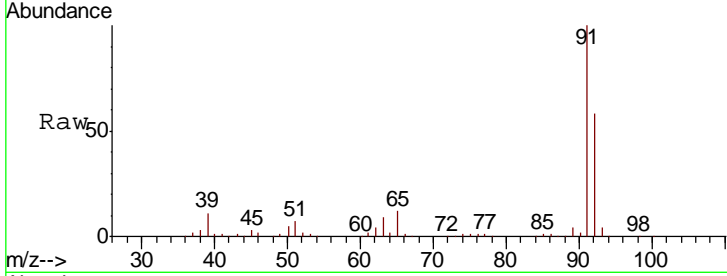




#42
 Toluene
 Concen: 51.129 ug/L
 RT: 7.98 min Scan# 2064
 Delta R.T. -0.00 min
 Lab File: VU040541.D
 Acq: 07 Oct 2020 10:43

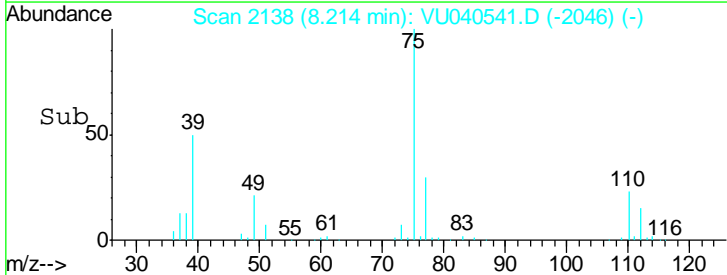
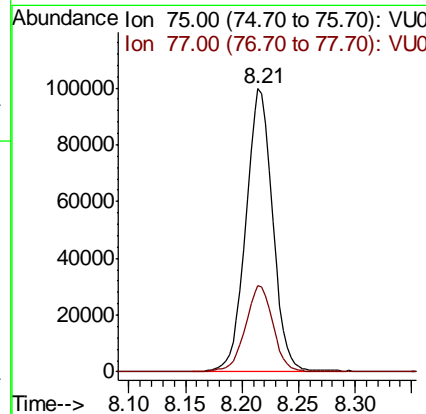
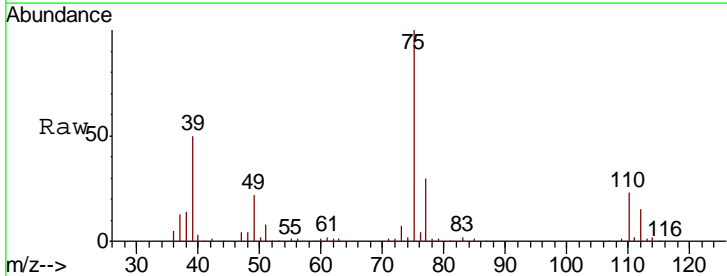
Instrument :
 MSVOA_U
 ClientSampled :
 VSTD050210

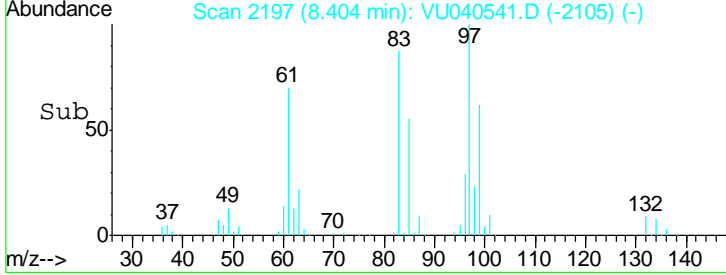
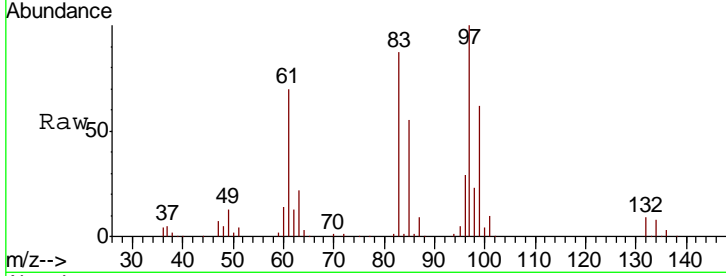
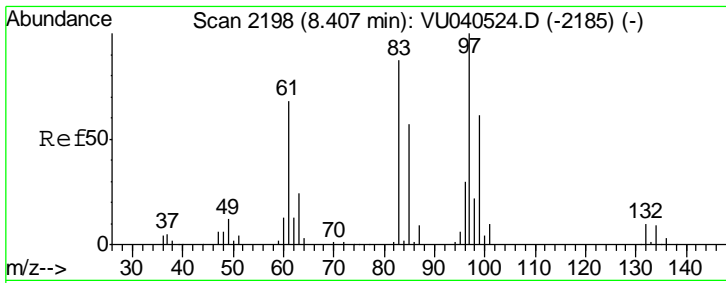
Tgt Ion: 91 Resp: 461908
 Ion Ratio Lower Upper
 91 100
 92 58.2 39.9 74.1



#44
 trans-1,3-Dichloropropene
 Concen: 46.172 ug/L
 RT: 8.21 min Scan# 2138
 Delta R.T. -0.00 min
 Lab File: VU040541.D
 Acq: 07 Oct 2020 10:43

Tgt Ion: 75 Resp: 165556
 Ion Ratio Lower Upper
 75 100
 77 30.3 22.1 41.1

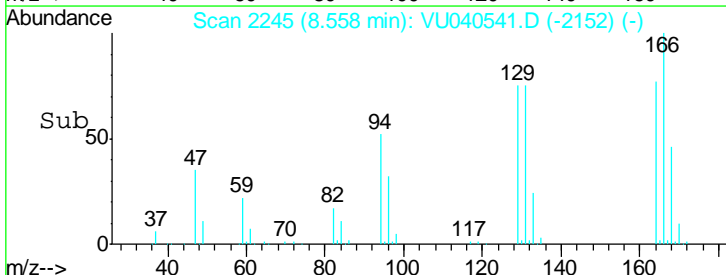
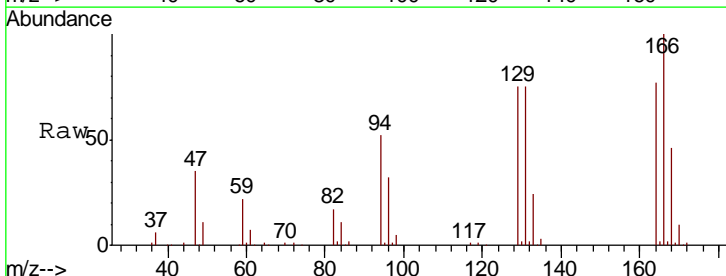
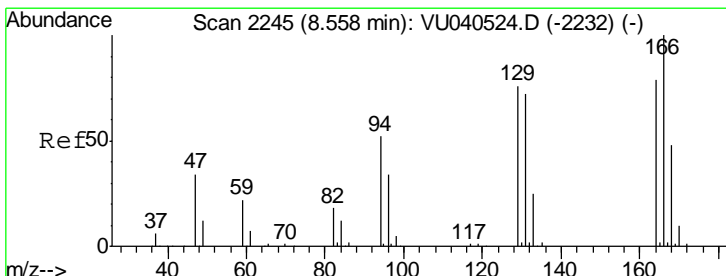
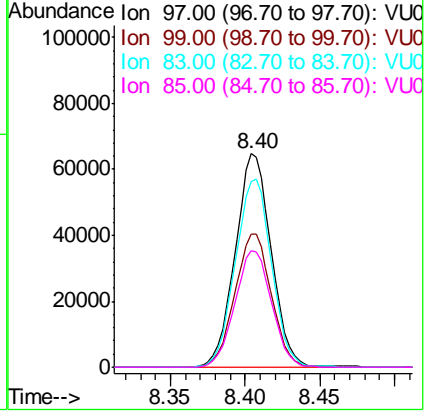




#45
 1,1,2-Trichloroethane
 Concen: 49.726 ug/L
 RT: 8.40 min Scan# 2197
 Delta R.T. -0.00 min
 Lab File: VU040541.D
 Acq: 07 Oct 2020 10:43

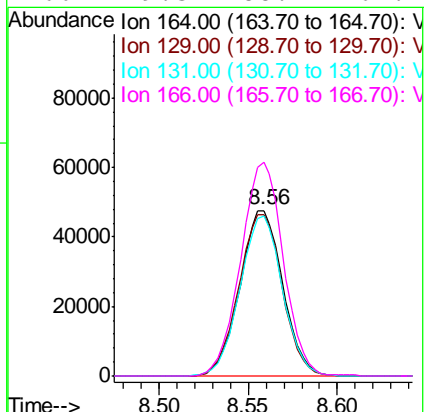
Tgt Ion	Resp	Lower	Upper
97	108243		
99	62.4	42.7	79.3
83	86.9	61.0	113.4
85	54.6	39.8	73.8

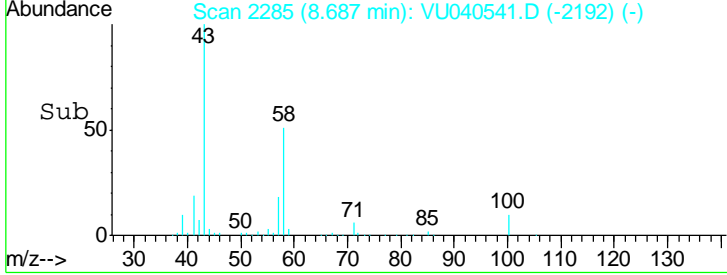
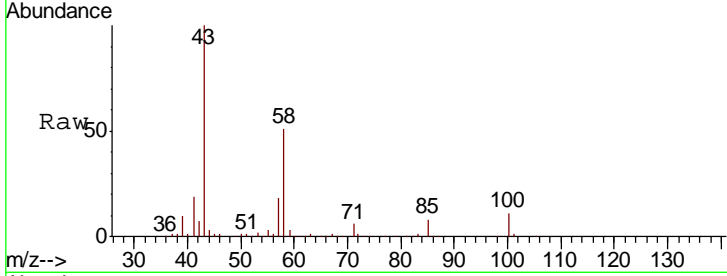
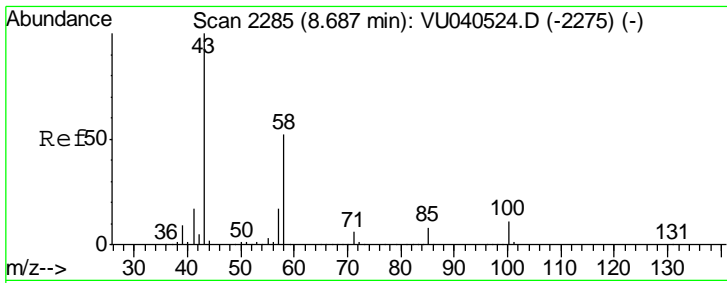
Instrument : MSVOA_U
 ClientSampleID : VSTD050210



#46
 Tetrachloroethene
 Concen: 48.236 ug/L
 RT: 8.56 min Scan# 2245
 Delta R.T. -0.00 min
 Lab File: VU040541.D
 Acq: 07 Oct 2020 10:43

Tgt Ion	Resp	Lower	Upper
164	79451		
129	97.5	67.4	125.2
131	97.3	63.8	118.6
166	129.3	88.7	164.7

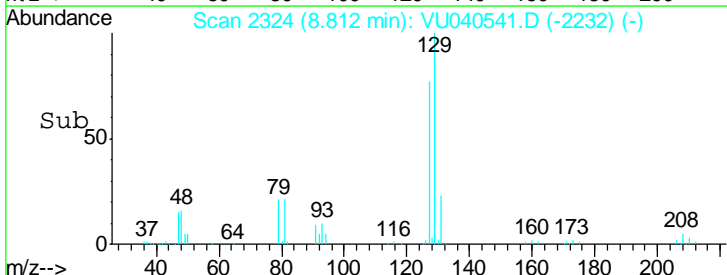
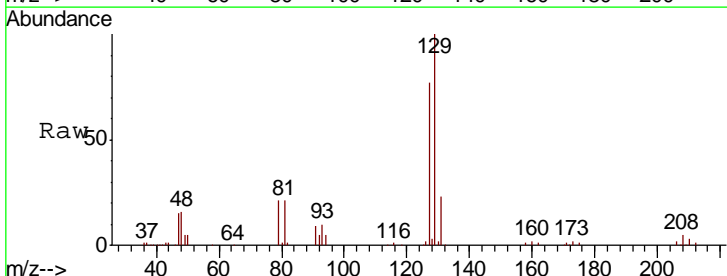
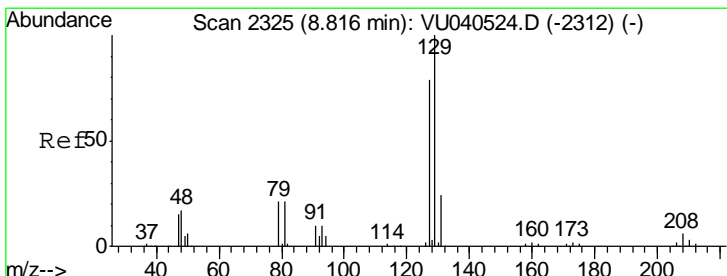
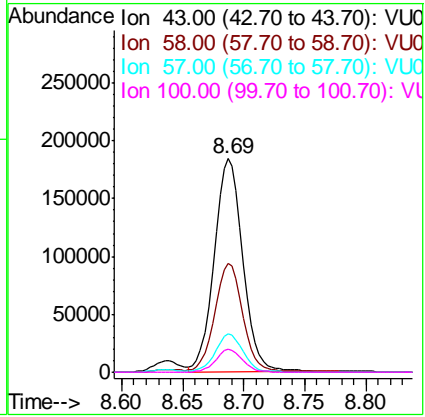




#48
 2-Hexanone
 Concen: 97.473 ug/L
 RT: 8.69 min Scan# 2285
 Delta R.T. -0.00 min
 Lab File: VU040541.D
 Acq: 07 Oct 2020 10:43

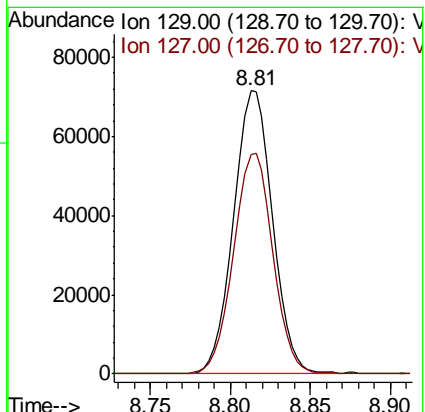
Instrument : MSVOA_U
 ClientSampled : VSTD050210

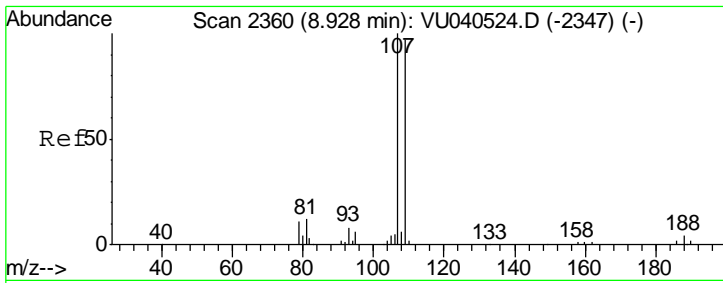
Tgt Ion	Resp	Lower	Upper
43	303759		
58	50.2	40.6	60.8
57	17.7	14.3	21.5
100	10.2	8.5	12.7



#49
 Dibromochloromethane
 Concen: 49.982 ug/L
 RT: 8.81 min Scan# 2324
 Delta R.T. -0.00 min
 Lab File: VU040541.D
 Acq: 07 Oct 2020 10:43

Tgt Ion	Resp	Lower	Upper
129	118802		
127	77.3	54.9	102.1

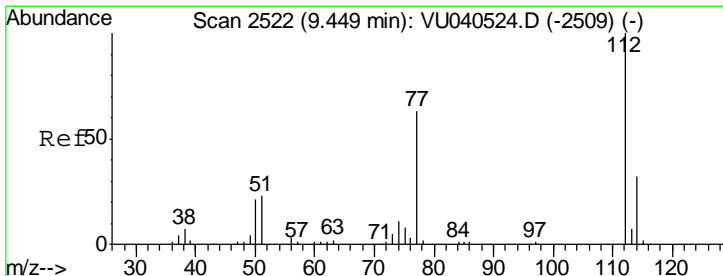
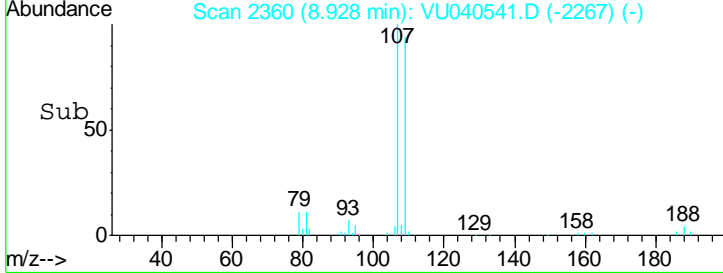
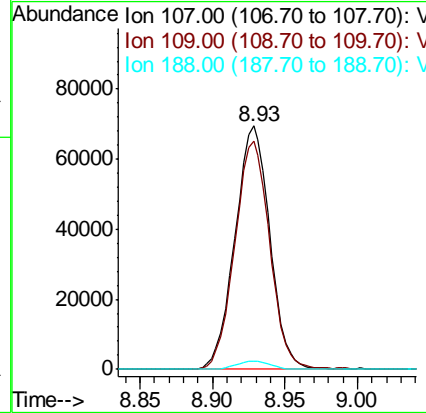
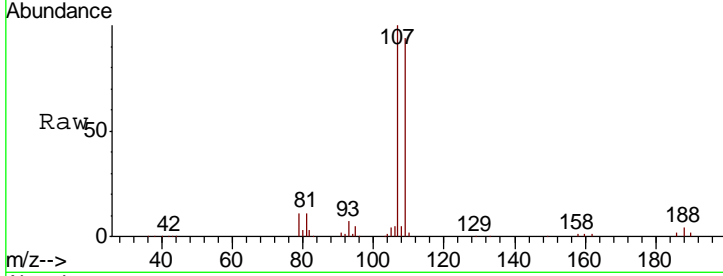




#50
 1,2-Dibromoethane
 Concen: 50.085 ug/L
 RT: 8.93 min Scan# 2360
 Delta R.T. -0.00 min
 Lab File: VU040541.D
 Acq: 07 Oct 2020 10:43

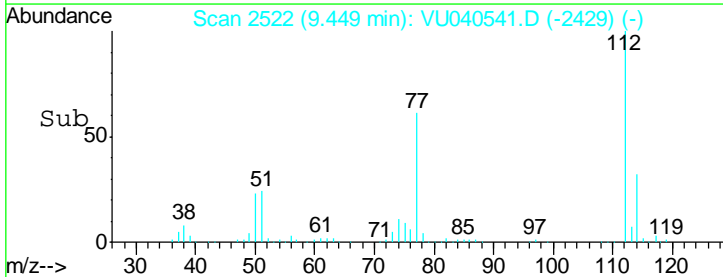
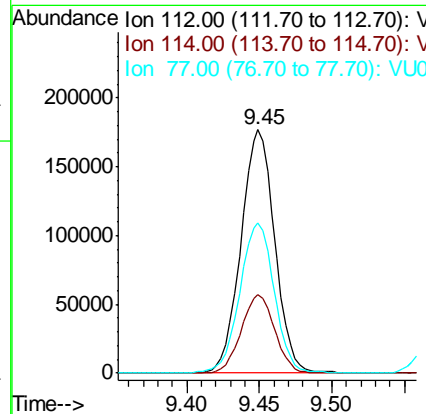
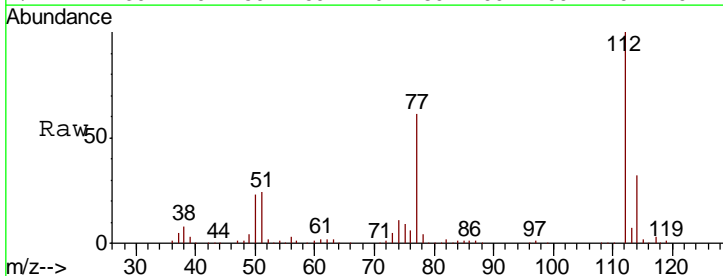
Instrument :
 MSVOA_U
 ClientSampled :
 VSTD050210

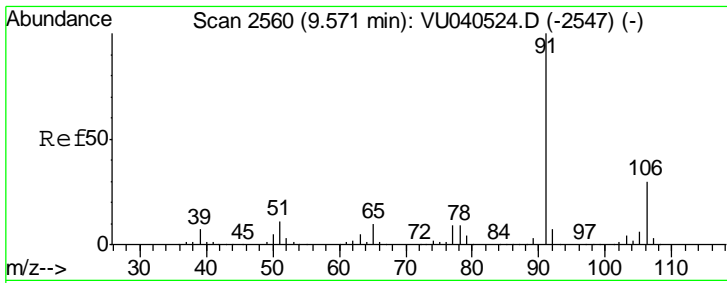
Tgt Ion	Resp	Lower	Upper
107	115576		
109	93.8	67.8	125.8
188	3.5	2.8	4.2



#51
 Chlorobenzene
 Concen: 48.193 ug/L
 RT: 9.45 min Scan# 2522
 Delta R.T. -0.00 min
 Lab File: VU040541.D
 Acq: 07 Oct 2020 10:43

Tgt Ion	Resp	Lower	Upper
112	285567		
114	32.2	22.1	41.1
77	61.5	50.4	75.6

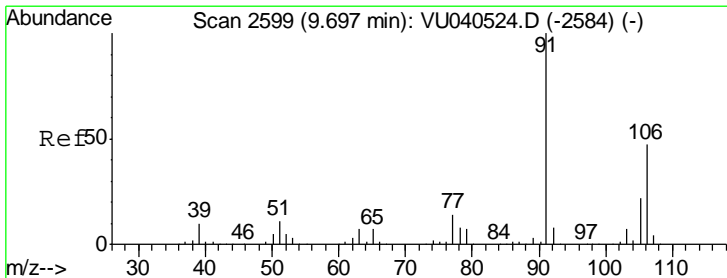
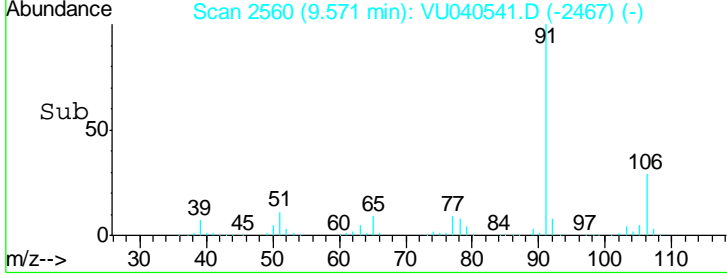
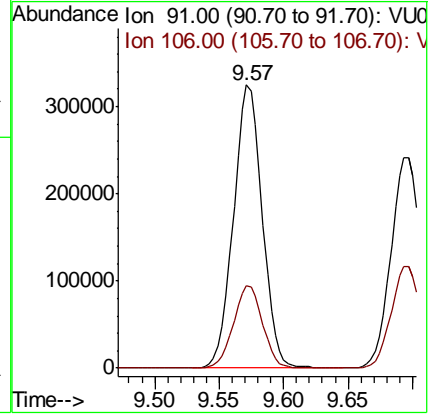
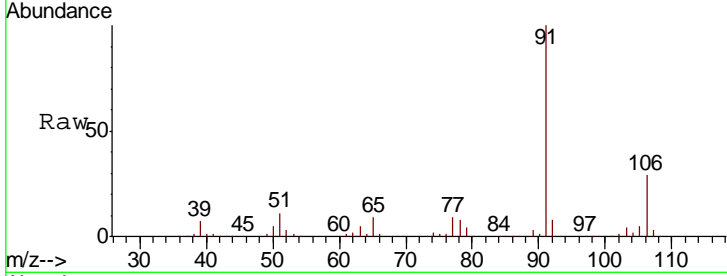




#52
Ethylbenzene
Concen: 50.032 ug/L
RT: 9.57 min Scan# 2560
Delta R.T. -0.00 min
Lab File: VU040541.D
Acq: 07 Oct 2020 10:43

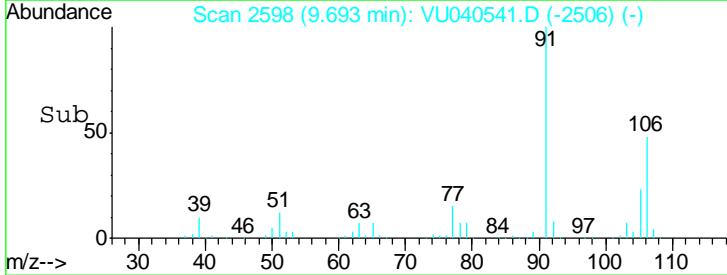
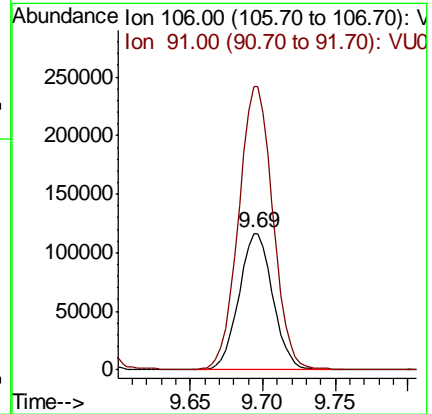
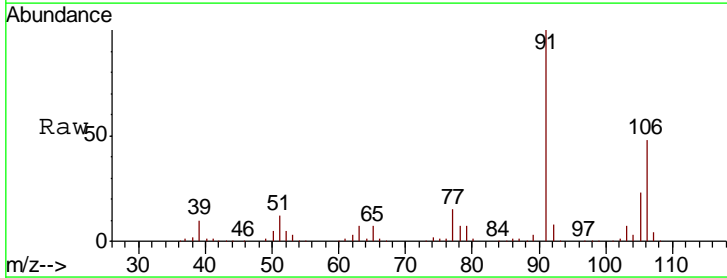
Instrument :
MSVOA_U
ClientSampleId :
VSTD050210

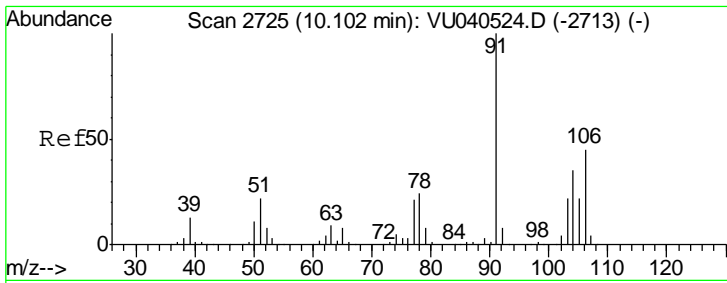
Tgt Ion: 91 Resp: 501701
Ion Ratio Lower Upper
91 100
106 29.1 20.9 38.9



#53
m,p-Xylene
Concen: 51.177 ug/L
RT: 9.69 min Scan# 2598
Delta R.T. -0.00 min
Lab File: VU040541.D
Acq: 07 Oct 2020 10:43

Tgt Ion: 106 Resp: 188972
Ion Ratio Lower Upper
106 100
91 207.8 150.1 278.7

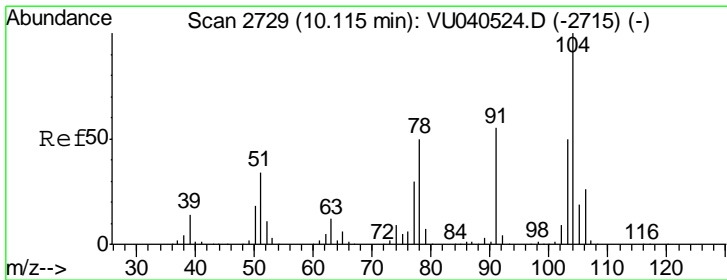
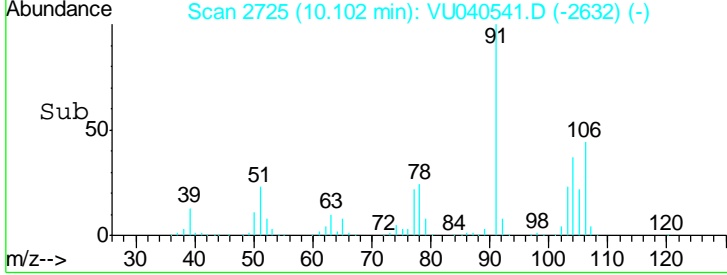
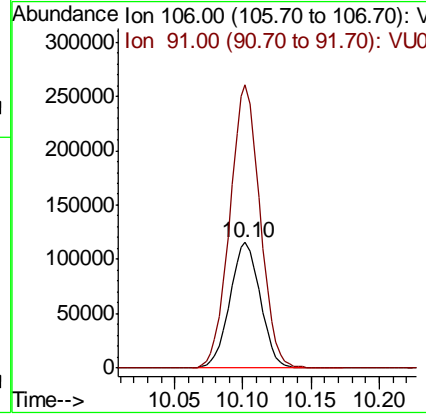
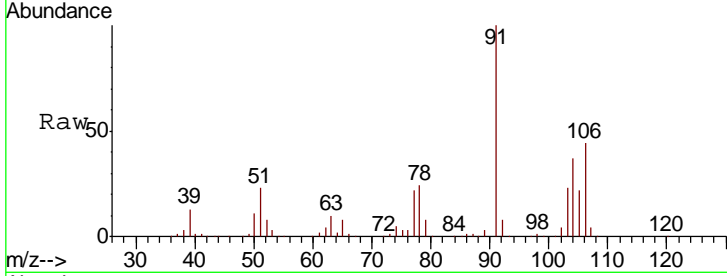




#54
 o-xylene
 Concen: 51.265 ug/L
 RT: 10.10 min Scan# 2725
 Delta R.T. -0.00 min
 Lab File: VU040541.D
 Acq: 07 Oct 2020 10:43

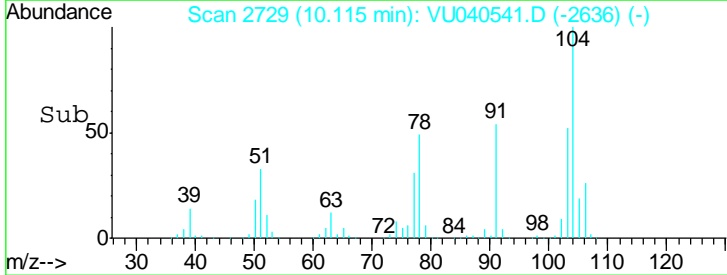
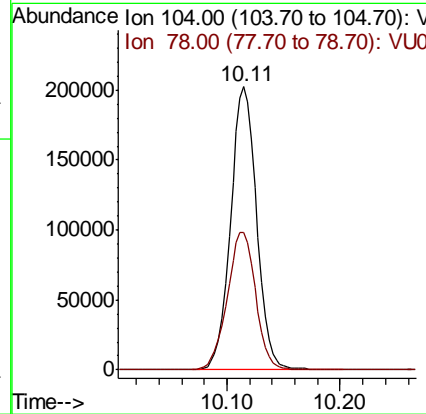
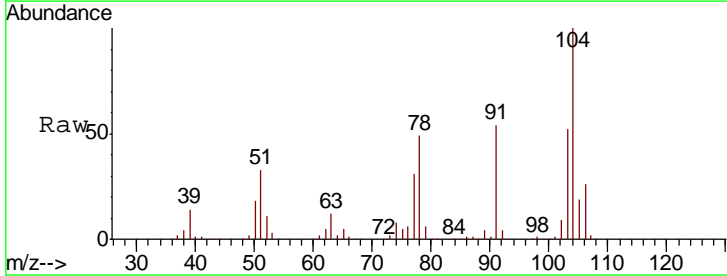
Instrument : MSVOA_U
 ClientSampled : VSTD050210

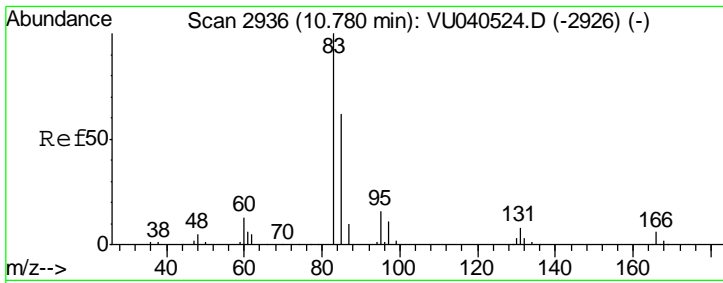
Tgt Ion:106 Resp: 180100
 Ion Ratio Lower Upper
 106 100
 91 225.3 155.6 289.0



#55
 Styrene
 Concen: 52.232 ug/L
 RT: 10.11 min Scan# 2729
 Delta R.T. -0.00 min
 Lab File: VU040541.D
 Acq: 07 Oct 2020 10:43

Tgt Ion:104 Resp: 323207
 Ion Ratio Lower Upper
 104 100
 78 48.6 35.2 65.4

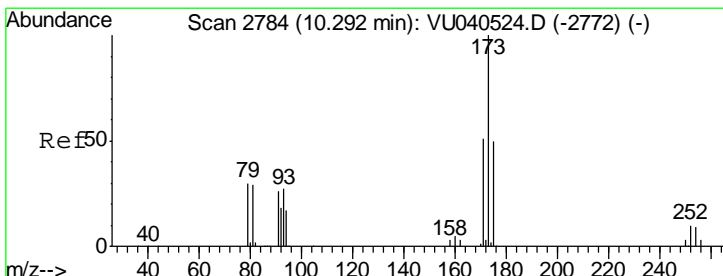
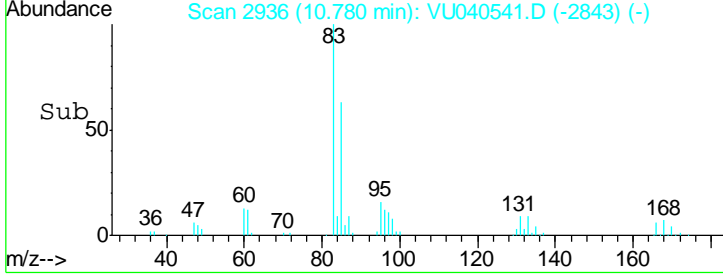
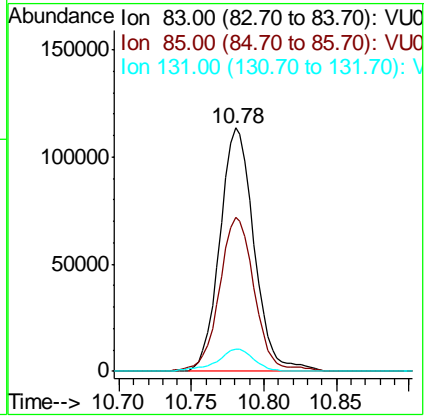
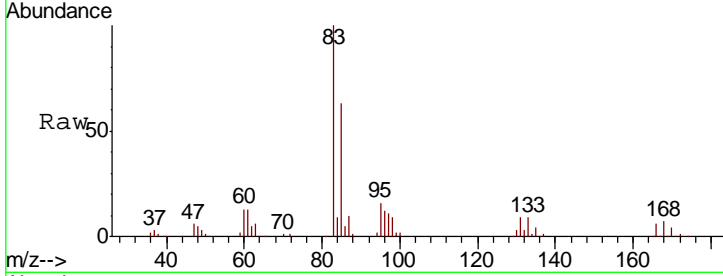




#57
 1,1,2,2-Tetrachloroethane
 Concen: 48.476 ug/L
 RT: 10.78 min Scan# 2936
 Delta R.T. -0.00 min
 Lab File: VU040541.D
 Acq: 07 Oct 2020 10:43

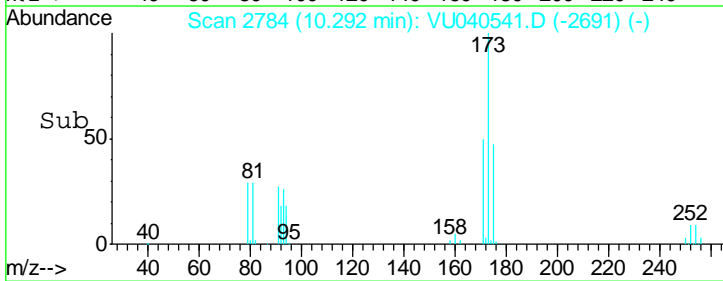
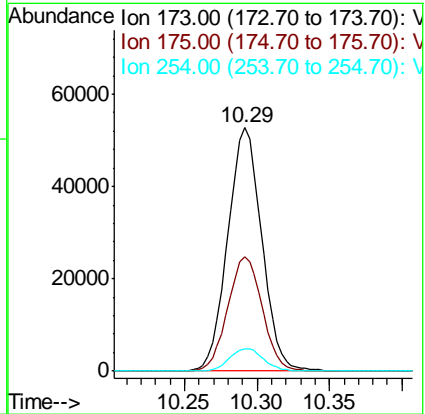
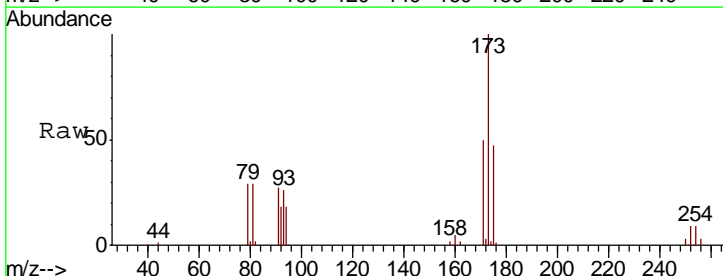
Instrument : MSVOA_U
 ClientSampled : VSTD050210

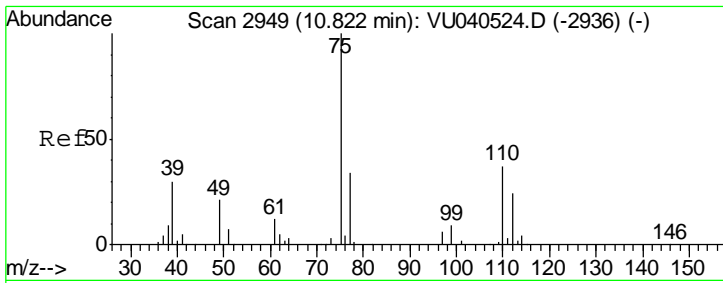
Tgt Ion	Resp	Lower	Upper
83	186606		
85	63.1	44.2	82.2
131	9.4	7.1	10.7



#59
 Bromoform
 Concen: 49.401 ug/L
 RT: 10.29 min Scan# 2784
 Delta R.T. -0.00 min
 Lab File: VU040541.D
 Acq: 07 Oct 2020 10:43

Tgt Ion	Resp	Lower	Upper
173	85948		
175	47.5	38.5	57.7
254	9.2	7.0	10.6

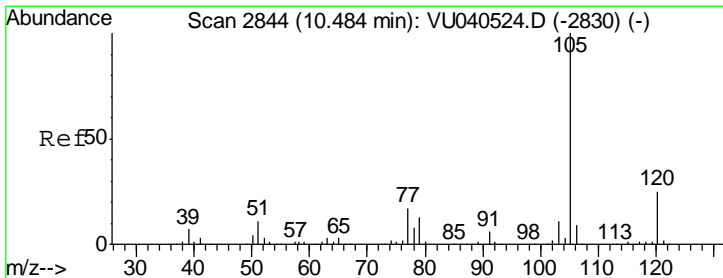
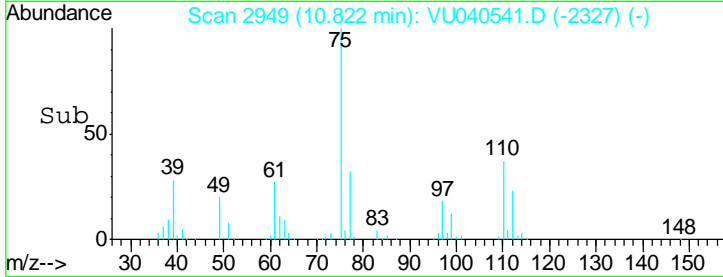
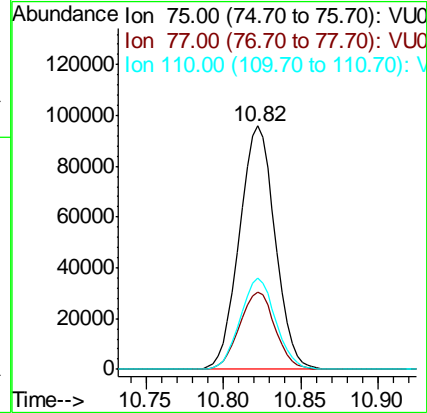
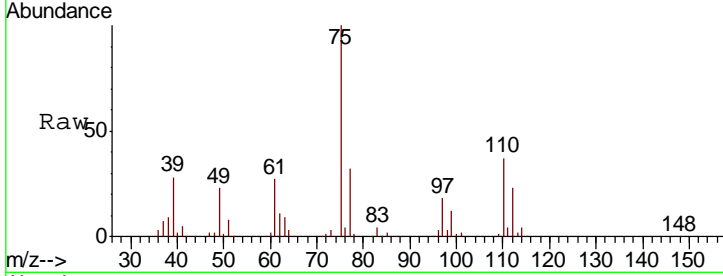




#60
 1,2,3-Trichloropropane
 Concen: 47.681 ug/L
 RT: 10.82 min Scan# 2949
 Delta R.T. -0.00 min
 Lab File: VU040541.D
 Acq: 07 Oct 2020 10:43

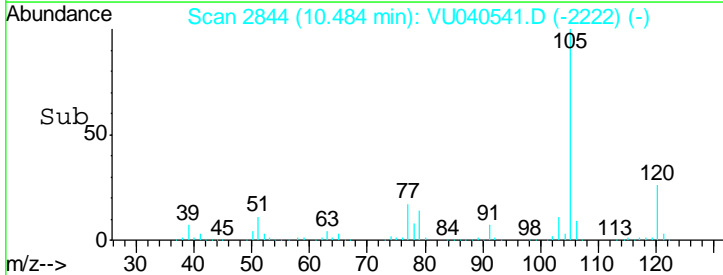
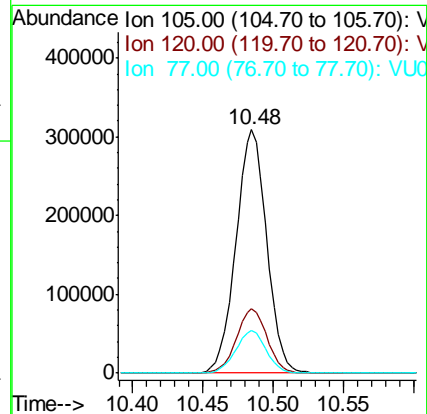
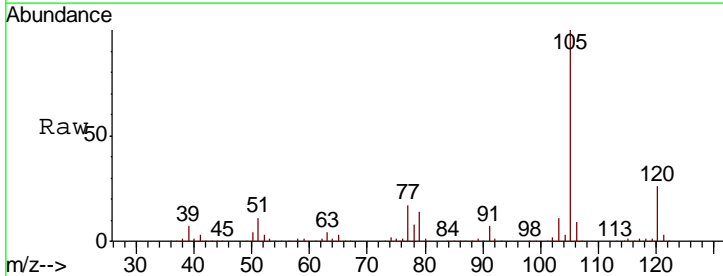
Instrument :
 MSVOA_U
 ClientSampled :
 VSTD050210

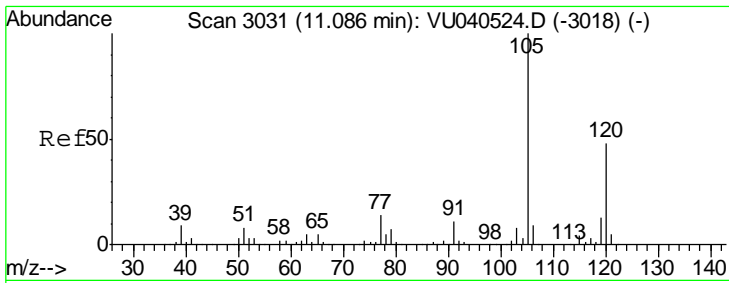
Tgt Ion	Resp	Lower	Upper
75	153737		
77	31.8	26.4	39.6
110	37.1	30.1	45.1



#61
 Isopropylbenzene
 Concen: 49.364 ug/L
 RT: 10.48 min Scan# 2844
 Delta R.T. -0.00 min
 Lab File: VU040541.D
 Acq: 07 Oct 2020 10:43

Tgt Ion	Resp	Lower	Upper
105	470569		
120	26.3	20.7	31.1
77	17.4	13.8	20.8

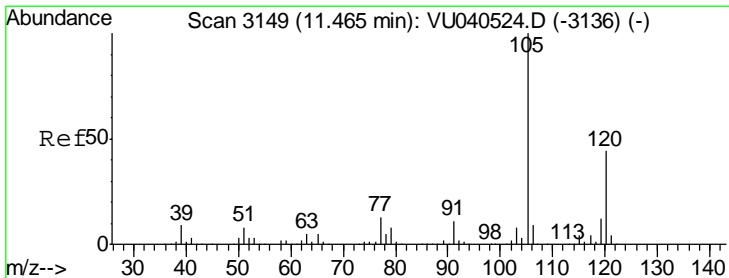
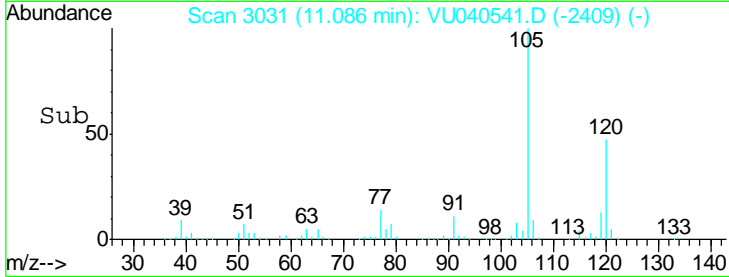
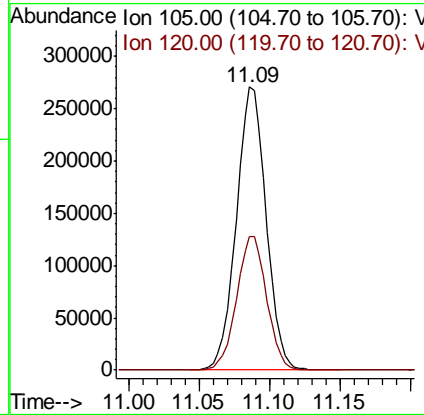
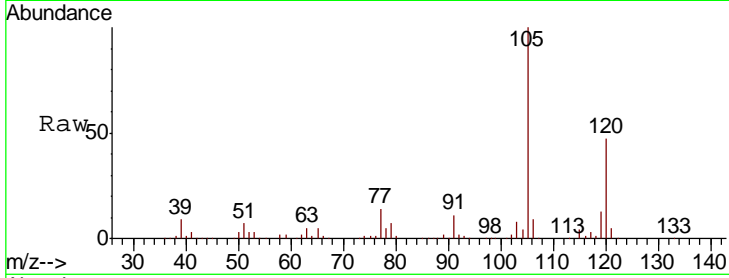




#62
 1,3,5-Trimethylbenzene
 Concen: 51.181 ug/L
 RT: 11.09 min Scan# 3031
 Delta R.T. -0.00 min
 Lab File: VU040541.D
 Acq: 07 Oct 2020 10:43

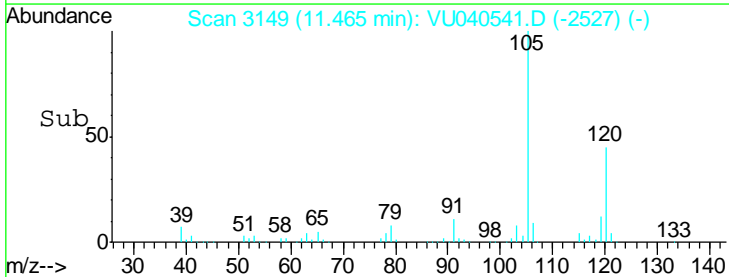
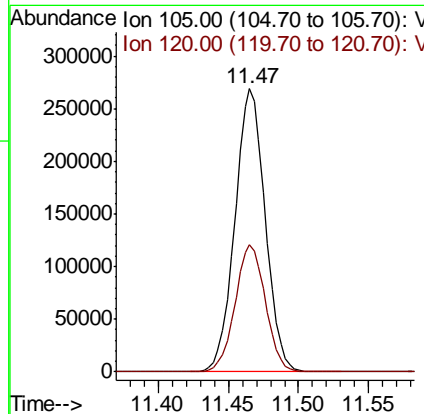
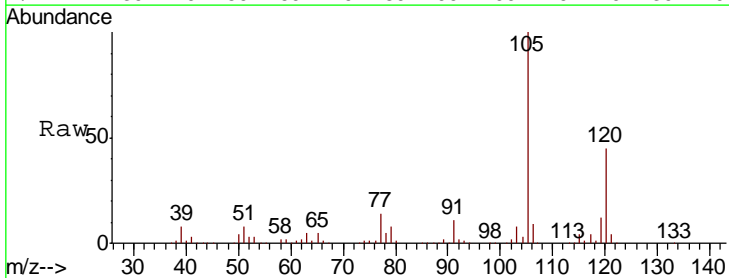
Instrument :
 MSVOA_U
 ClientSampled :
 VSTD050210

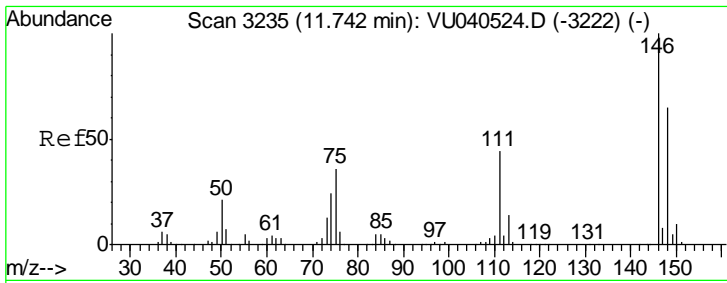
Tgt Ion:105 Resp: 400851
 Ion Ratio Lower Upper
 105 100
 120 47.6 38.6 58.0



#63
 1,2,4-Trimethylbenzene
 Concen: 50.817 ug/L
 RT: 11.47 min Scan# 3149
 Delta R.T. -0.00 min
 Lab File: VU040541.D
 Acq: 07 Oct 2020 10:43

Tgt Ion:105 Resp: 403654
 Ion Ratio Lower Upper
 105 100
 120 45.1 35.7 53.5

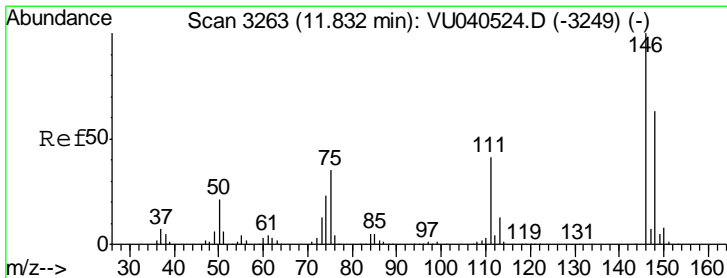
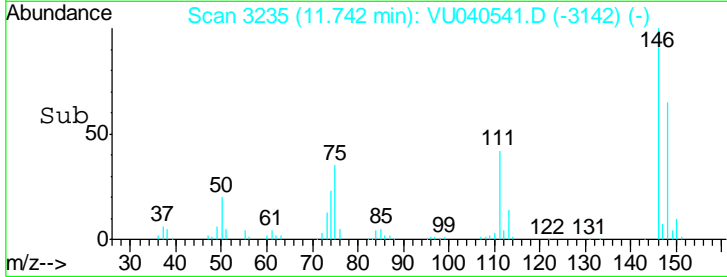
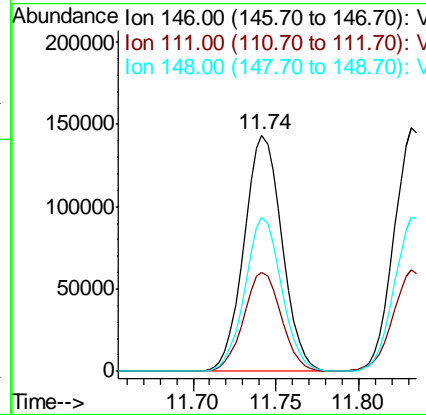
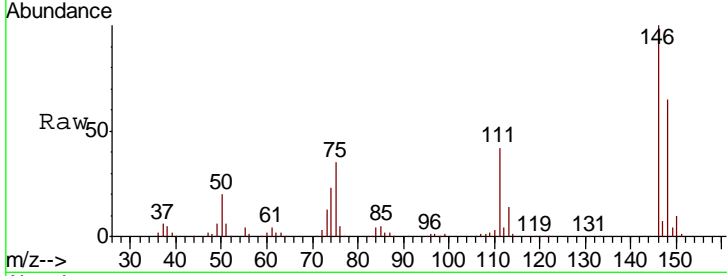




#64
 1,3-Dichlorobenzene
 Concen: 49.042 ug/L
 RT: 11.74 min Scan# 3235
 Delta R.T. -0.00 min
 Lab File: VU040541.D
 Acq: 07 Oct 2020 10:43

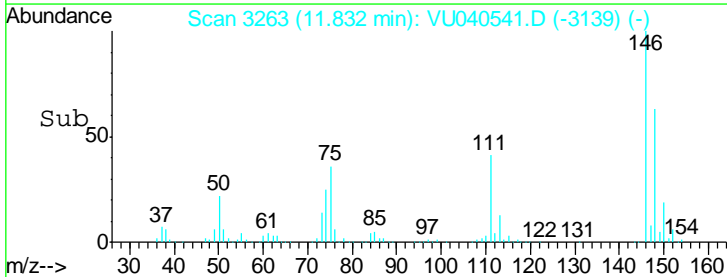
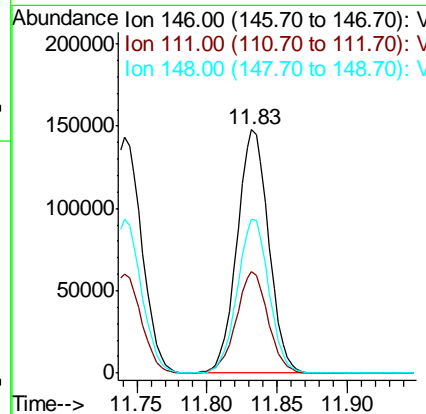
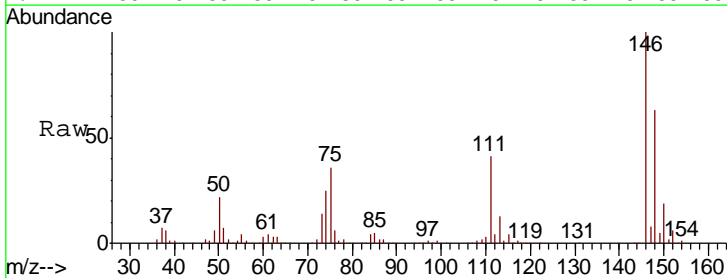
Instrument :
 MSVOA_U
 ClientSampled :
 VSTD050210

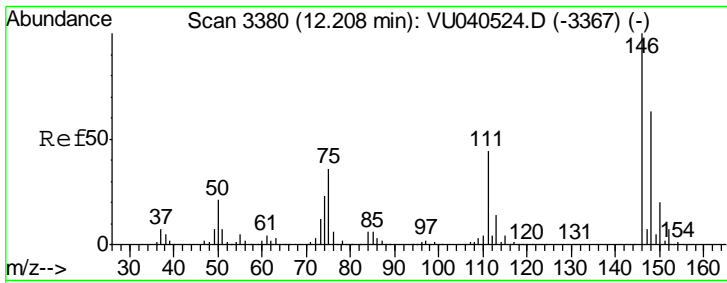
Tgt Ion	Resp	Lower	Upper
146	100		
111	42.2	30.8	57.2
148	65.2	45.4	84.2



#65
 1,4-Dichlorobenzene
 Concen: 47.412 ug/L
 RT: 11.83 min Scan# 3263
 Delta R.T. -0.00 min
 Lab File: VU040541.D
 Acq: 07 Oct 2020 10:43

Tgt Ion	Resp	Lower	Upper
146	100		
111	41.5	28.7	53.3
148	63.4	44.1	81.9

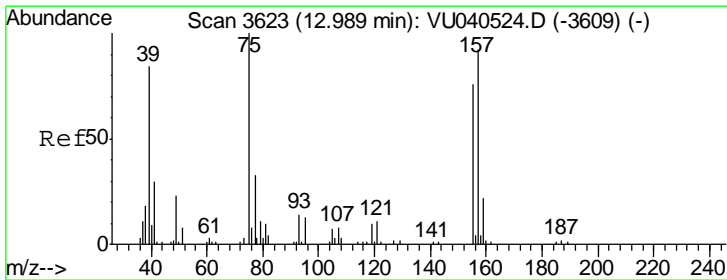
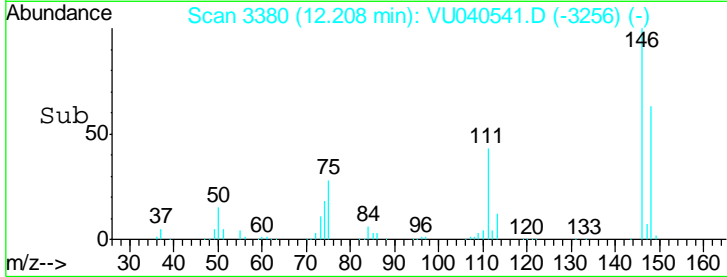
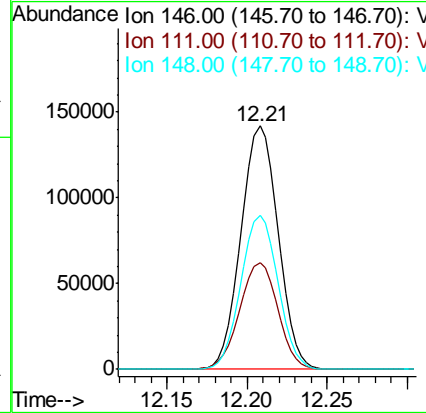
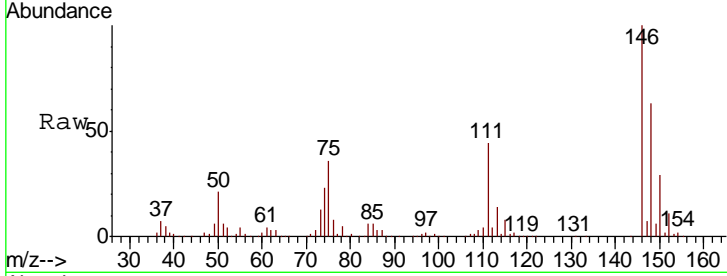




#67
 1,2-Dichlorobenzene
 Concen: 48.289 ug/L
 RT: 12.21 min Scan# 3380
 Delta R.T. -0.00 min
 Lab File: VU040541.D
 Acq: 07 Oct 2020 10:43

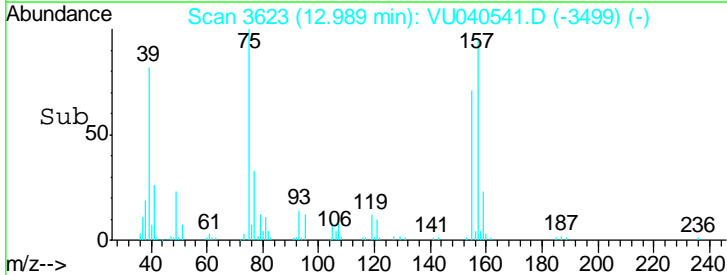
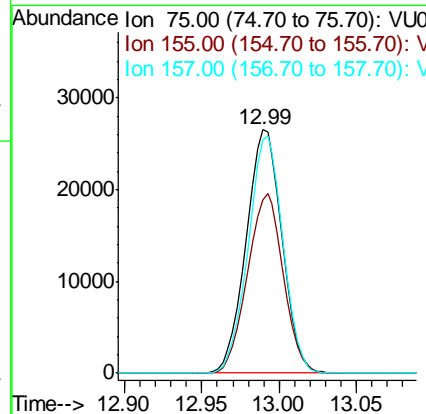
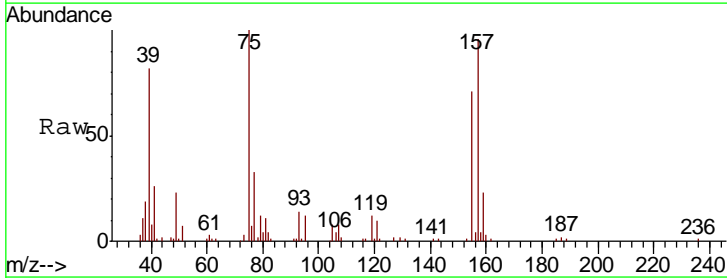
Instrument :
 MSVOA_U
 ClientSampled :
 VSTD050210

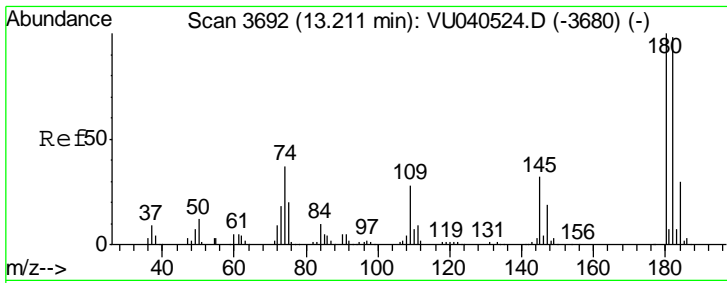
Tgt Ion	Resp	Lower	Upper
146	100		
111	43.9	35.7	53.5
148	63.3	50.6	75.8



#68
 1,2-Dibromo-3-chloropropane
 Concen: 47.259 ug/L
 RT: 12.99 min Scan# 3623
 Delta R.T. -0.00 min
 Lab File: VU040541.D
 Acq: 07 Oct 2020 10:43

Tgt Ion	Resp	Lower	Upper
75	100		
155	71.4	61.0	91.6
157	96.0	73.5	110.3

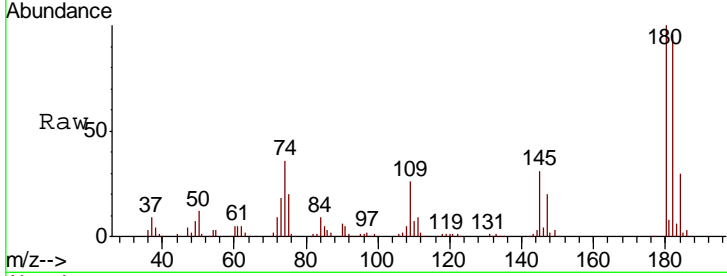




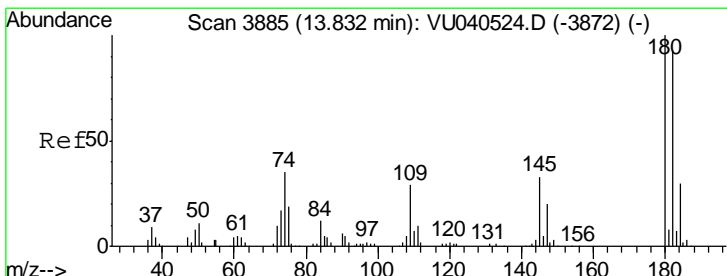
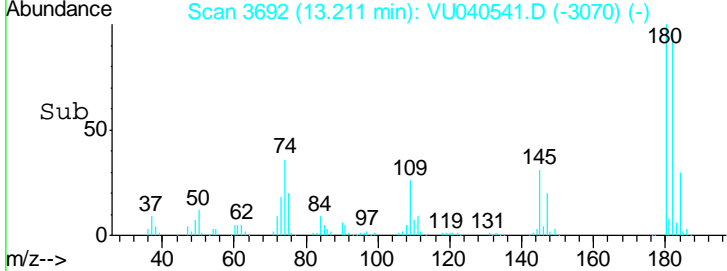
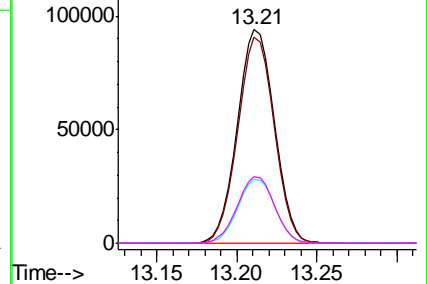
#69
 1,3,5-Trichlorobenzene
 Concen: 48.512 ug/L
 RT: 13.21 min Scan# 3692
 Delta R.T. -0.00 min
 Lab File: VU040541.D
 Acq: 07 Oct 2020 10:43

Instrument :
 MSVOA_U
 ClientSampleID :
 VSTD050210

Tgt Ion	Resp	Lower	Upper
180	147744		
182	94.8	76.9	115.3
184	30.0	24.2	36.2
145	31.2	25.4	38.2

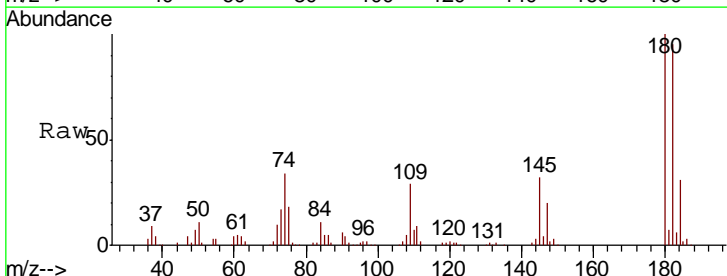


Abundance Ion 180.00 (179.70 to 180.70): V
 Ion 182.00 (181.70 to 182.70): V
 Ion 184.00 (183.70 to 184.70): V
 Ion 145.00 (144.70 to 145.70): V

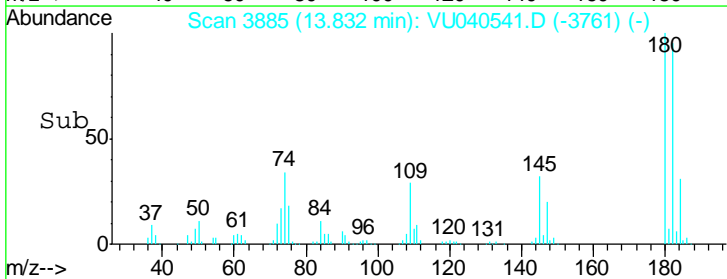
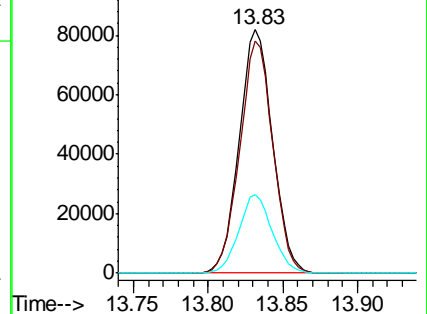


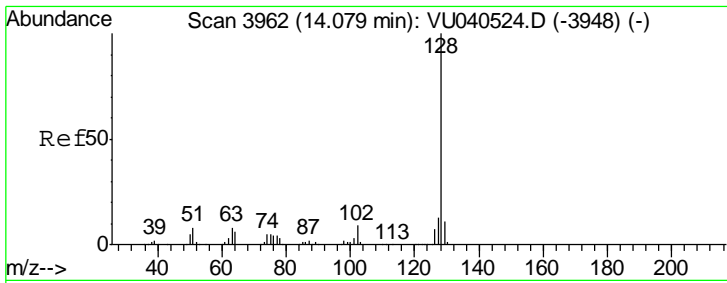
#70
 1,2,4-trichlorobenzene
 Concen: 48.129 ug/L
 RT: 13.83 min Scan# 3885
 Delta R.T. -0.00 min
 Lab File: VU040541.D
 Acq: 07 Oct 2020 10:43

Tgt Ion	Resp	Lower	Upper
180	127042		
182	94.3	75.0	112.6
145	32.2	25.9	38.9



Abundance Ion 180.00 (179.70 to 180.70): V
 Ion 182.00 (181.70 to 182.70): V
 Ion 145.00 (144.70 to 145.70): V

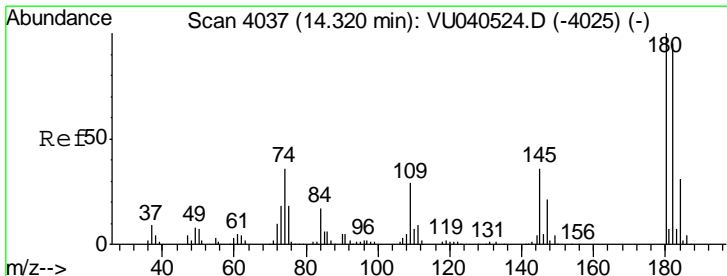
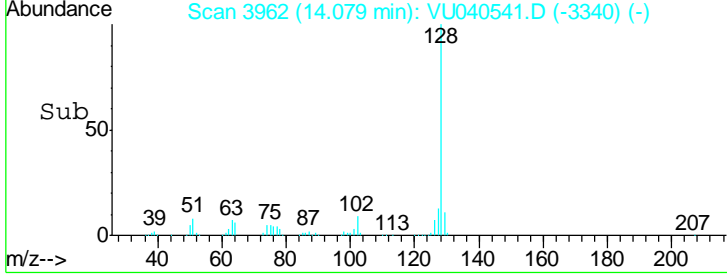
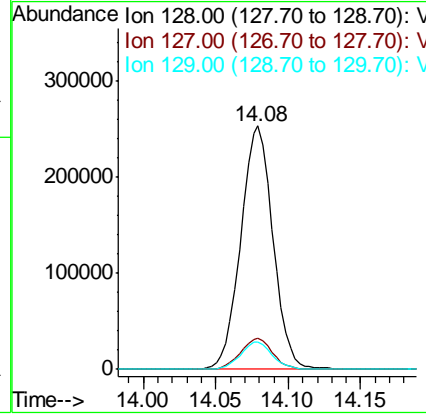
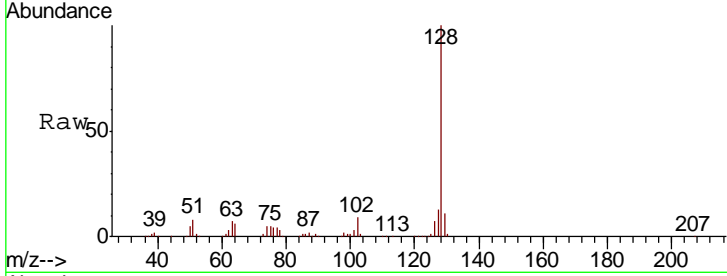




#71
 Naphthalene
 Concen: 47.719 ug/L
 RT: 14.08 min Scan# 3962
 Delta R.T. -0.00 min
 Lab File: VU040541.D
 Acq: 07 Oct 2020 10:43

Instrument :
 MSVOA_U
 ClientSampled :
 VSTD050210

Tgt Ion	Resp	Lower	Upper
128	100		
127	12.9	10.5	15.7
129	11.1	8.6	13.0



#72
 1,2,3-Trichlorobenzene
 Concen: 49.917 ug/L
 RT: 14.32 min Scan# 4037
 Delta R.T. -0.00 min
 Lab File: VU040541.D
 Acq: 07 Oct 2020 10:43

Tgt Ion	Resp	Lower	Upper
180	100		
182	93.9	77.7	116.5
145	34.4	28.4	42.6

