

Data Path : Z:\VOASRV\HPCHEM1\MSVOA U\DATA\VU100818\  
 Data File : VU027507.D  
 Acq On : 08 Oct 2018 18:25  
 Operator : MD/SY  
 Sample : J5298-07  
 Misc : 5.0mL/MSVOA U/WATER  
 ALS Vial : 22 Sample Multiplier: 1

Instrument :  
 MSVOA\_U  
 ClientSampled :  
 E62W0

Integration Parameters: LSCINT.P

Integrator: RTE  
 Smoothing : OFF  
 Sampling : 1  
 Start Thrs: 0.2  
 Stop Thrs : 0

Filtering: 5  
 Min Area: 0 % of largest Peak  
 Max Peaks: 100  
 Peak Location: TOP

If leading or trailing edge < 100 prefer < Baseline drop else tangent >  
 Peak separation: 5

Method : Z:\VOASRV\HPCHEM1\MSVOA\_U\METHOD\SOMULM100518WMA.M  
 Title : VOC Analysis

Signal : TIC

peak #	R.T. min	first scan	max scan	last scan	PK TY	peak height	corr. area	corr. % max.	% of total
1	1.681	153	158	176	rVB	69033	88126	13.07%	1.621%
2	2.273	332	342	355	rBV	132434	200365	29.71%	3.685%
3	2.447	388	396	413	rBV3	3278	6406	0.95%	0.118%
4	2.665	461	464	467	rBV	190	93	0.01%	0.002%
5	2.836	512	517	518	rBV2	485	417	0.06%	0.008%
6	2.884	529	532	536	rBV	204	144	0.02%	0.003%
7	2.903	536	538	541	rVB	177	79	0.01%	0.001%
8	2.983	559	563	567	rBV	167	180	0.03%	0.003%
9	3.189	622	627	632	rBV3	355	398	0.06%	0.007%
10	3.334	669	672	673	rBV2	138	77	0.01%	0.001%
11	3.482	716	718	720	rVB	132	74	0.01%	0.001%
12	3.620	758	761	767	rBV2	201	207	0.03%	0.004%
13	3.684	778	781	784	rBV	258	172	0.03%	0.003%
14	3.713	788	790	794	rVB	233	126	0.02%	0.002%
15	3.745	794	800	803	rBV	88	95	0.01%	0.002%
16	3.797	814	816	818	rBV	136	63	0.01%	0.001%
17	3.868	834	838	841	rBV	201	120	0.02%	0.002%
18	3.964	866	868	872	rVV	94	71	0.01%	0.001%
19	4.012	880	883	886	rVB	212	133	0.02%	0.002%
20	4.180	917	935	964	rBV	76523	203473	30.17%	3.742%
21	4.491	1027	1032	1037	rVB2	255	359	0.05%	0.007%
22	4.520	1037	1041	1045	rBV2	303	209	0.03%	0.004%
23	4.546	1045	1049	1053	rVB2	228	182	0.03%	0.003%
24	4.569	1053	1056	1060	rBV2	302	190	0.03%	0.003%
25	4.649	1064	1081	1110	rBV	111881	267368	39.65%	4.917%
26	5.006	1188	1192	1194	rBV	109	95	0.01%	0.002%
27	5.141	1231	1234	1236	rBV	178	80	0.01%	0.001%
28	5.157	1236	1239	1242	rBV2	179	166	0.02%	0.003%
29	5.189	1247	1249	1251	rVB	164	70	0.01%	0.001%
30	5.263	1264	1272	1273	rBV	162	111	0.02%	0.002%
31	5.344	1273	1297	1331	rVV2	223469	674363	100.00%	12.403%
32	5.507	1345	1348	1351	rBV	178	159	0.02%	0.003%
33	5.546	1358	1360	1362	rVB	161	64	0.01%	0.001%
34	5.620	1379	1383	1386	rBV2	202	186	0.03%	0.003%

Data Path : Z:\VOASRV\HPCHEM1\MSVOA U\DATA\VU100818\  
 Data File : VU027507.D  
 Acq On : 08 Oct 2018 18:25  
 Operator : MD/SY  
 Sample : J5298-07  
 Misc : 5.0mL/MSVOA U/WATER  
 ALS Vial : 22 Sample Multiplier: 1

Instrument :  
 MSVOA\_U  
 ClientSampleId :  
 E62W0

## Integration Parameters: LSCINT.P

Integrator: RTE  
 Smoothing : OFF  
 Sampling : 1  
 Start Thrs: 0.2  
 Stop Thrs : 0

Filtering: 5  
 Min Area: 0 % of largest Peak  
 Max Peaks: 100  
 Peak Location: TOP

If leading or trailing edge < 100 prefer < Baseline drop else tangent >  
 Peak separation: 5

Method : Z:\VOASRV\HPCHEM1\MSVOA\_U\METHOD\SOMULM100518WMA.M  
 Title : VOC Analysis

35	5.697	1405	1407	1412	rBV2	142	141	0.02%	0.003%
36	5.739	1415	1420	1421	rBV2	201	129	0.02%	0.002%
37	5.749	1421	1423	1427	rBB2	217	149	0.02%	0.003%
38	5.797	1429	1438	1445	rBV2	1110	1952	0.29%	0.036%
39	5.887	1453	1466	1496	rBV	234487	466614	69.19%	8.582%
40	6.073	1522	1524	1527	rVB2	318	200	0.03%	0.004%
41	6.144	1544	1546	1549	rBV2	175	106	0.02%	0.002%
42	6.160	1549	1551	1552	rBV	168	87	0.01%	0.002%
43	6.173	1552	1555	1562	rVB4	587	513	0.08%	0.009%
44	6.334	1590	1605	1624	rBV	163260	327052	48.50%	6.015%
45	6.498	1651	1656	1660	rBV	218	240	0.04%	0.004%
46	6.517	1660	1662	1663	rBV	145	63	0.01%	0.001%
47	6.578	1679	1681	1685	rVV	167	68	0.01%	0.001%
48	6.601	1686	1688	1690	rBV	140	62	0.01%	0.001%
49	6.630	1695	1697	1700	rVB	197	73	0.01%	0.001%
50	6.704	1716	1720	1723	rBV	82	80	0.01%	0.001%
51	6.723	1723	1726	1727	rBV	129	77	0.01%	0.001%
52	6.765	1736	1739	1742	rVB	215	99	0.01%	0.002%
53	6.790	1742	1747	1749	rBV2	227	228	0.03%	0.004%
54	6.826	1749	1758	1775	rVV5	4647	9154	1.36%	0.168%
55	6.970	1799	1803	1804	rBV	163	103	0.02%	0.002%
56	7.228	1871	1883	1907	rBV	85743	154781	22.95%	2.847%
57	7.343	1916	1919	1923	rVB2	262	212	0.03%	0.004%
58	7.369	1923	1927	1928	rVV2	249	164	0.02%	0.003%
59	7.398	1928	1936	1948	rVB5	3418	6191	0.92%	0.114%
60	7.466	1953	1957	1962	rVB2	344	308	0.05%	0.006%
61	7.504	1965	1969	1971	rBV	106	86	0.01%	0.002%
62	7.523	1972	1975	1976	rBV	152	85	0.01%	0.002%
63	7.569	1976	1989	2002	rBV	273826	478260	70.92%	8.796%
64	7.736	2039	2041	2044	rBV2	151	87	0.01%	0.002%
65	7.851	2065	2077	2102	rBV	59689	104608	15.51%	1.924%
66	8.035	2131	2134	2139	rVB2	314	180	0.03%	0.003%
67	8.096	2150	2153	2154	rBV	245	105	0.02%	0.002%
68	8.186	2169	2181	2186	rBV2	4227	8646	1.28%	0.159%
69	8.311	2211	2220	2255	rVB	247990	435174	64.53%	8.004%
70	8.507	2279	2281	2282	rBV	257	121	0.02%	0.002%
71	8.687	2335	2337	2340	rVB2	199	112	0.02%	0.002%

Data Path : Z:\VOASRV\HPCHEM1\MSVOA U\DATA\VU100818\  
 Data File : VU027507.D  
 Acq On : 08 Oct 2018 18:25  
 Operator : MD/SY  
 Sample : J5298-07  
 Misc : 5.0mL/MSVOA U/WATER  
 ALS Vial : 22 Sample Multiplier: 1

Instrument :  
 MSVOA\_U  
 ClientSampleId :  
 E62W0

## Integration Parameters: LSCINT.P

Integrator: RTE  
 Smoothing : OFF  
 Sampling : 1  
 Start Thrs: 0.2  
 Stop Thrs : 0

Filtering: 5  
 Min Area: 0 % of largest Peak  
 Max Peaks: 100  
 Peak Location: TOP

If leading or trailing edge < 100 prefer < Baseline drop else tangent >  
 Peak separation: 5

Method : Z:\VOASRV\HPCHEM1\MSVOA\_U\METHOD\SOMULM100518WMA.M  
 Title : VOC Analysis

72	8.774	2360	2364	2368	rBV2	157	153	0.02%	0.003%
73	8.826	2378	2380	2382	rBV	148	63	0.01%	0.001%
74	8.867	2391	2393	2395	rBV	148	65	0.01%	0.001%
75	9.009	2434	2437	2438	rBV	200	96	0.01%	0.002%
76	9.093	2450	2463	2487	rBV	335046	555312	82.35%	10.213%
77	9.260	2507	2515	2523	rVB3	547	829	0.12%	0.015%
78	9.379	2543	2552	2561	rBV7	2577	4261	0.63%	0.078%
79	9.440	2570	2571	2574	rBV2	227	149	0.02%	0.003%
80	9.649	2634	2636	2638	rBV	156	73	0.01%	0.001%
81	10.314	2839	2843	2848	rVB3	593	532	0.08%	0.010%
82	10.433	2867	2880	2898	rBV	219971	348729	51.71%	6.414%
83	10.617	2922	2937	2946	rBV5	4777	10285	1.53%	0.189%
84	10.681	2954	2957	2958	rBV	345	203	0.03%	0.004%
85	10.777	2984	2987	2991	rVB	348	262	0.04%	0.005%
86	11.147	3095	3102	3112	rBV2	4855	6882	1.02%	0.127%
87	11.218	3120	3124	3126	rBV	556	410	0.06%	0.008%
88	11.388	3173	3177	3178	rBV	256	166	0.02%	0.003%
89	11.485	3195	3207	3223	rVB	320371	493059	73.11%	9.068%
90	11.764	3283	3294	3306	rBV2	25218	40893	6.06%	0.752%
91	11.819	3306	3311	3312	rVV2	1411	1268	0.19%	0.023%
92	11.861	3313	3324	3345	rVB	281653	447592	66.37%	8.232%
93	11.983	3357	3362	3368	rBV5	3351	4253	0.63%	0.078%
94	12.353	3473	3477	3481	rBV3	2287	2356	0.35%	0.043%
95	12.707	3574	3587	3589	rBV6	17275	33507	4.97%	0.616%
96	12.967	3661	3668	3678	rVB3	4854	6330	0.94%	0.116%
97	13.186	3730	3736	3747	rVB4	6311	8970	1.33%	0.165%
98	13.295	3761	3770	3780	rVB5	10330	16227	2.41%	0.298%
99	13.739	3900	3908	3912	rBV4	4571	6924	1.03%	0.127%
100	14.002	3984	3990	4000	rVB4	4805	6499	0.96%	0.120%

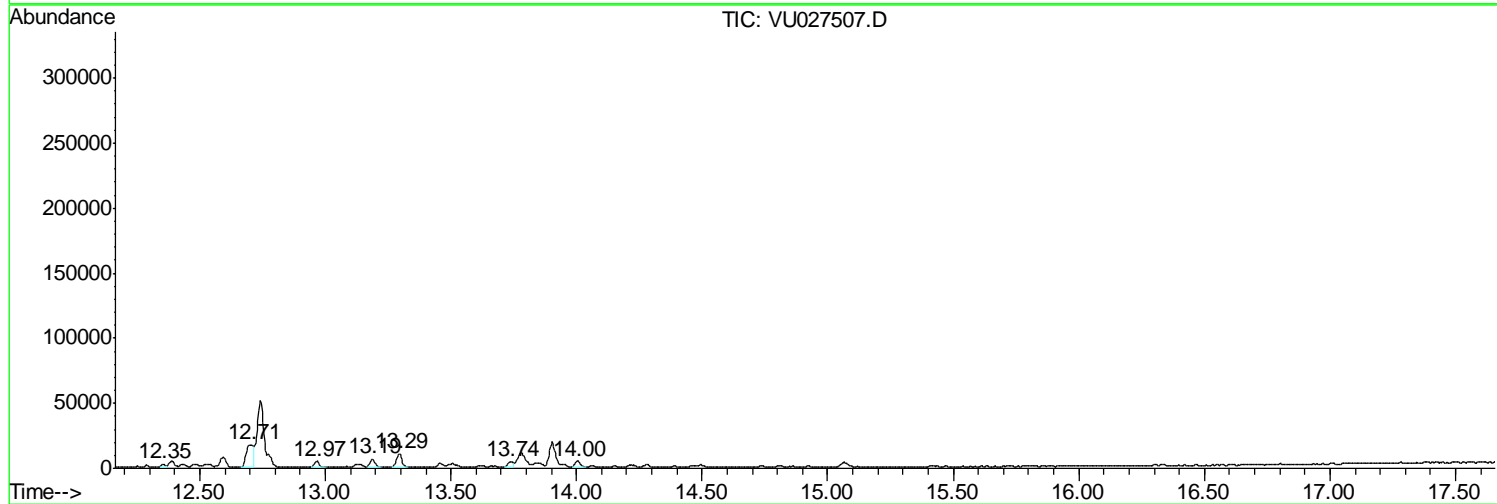
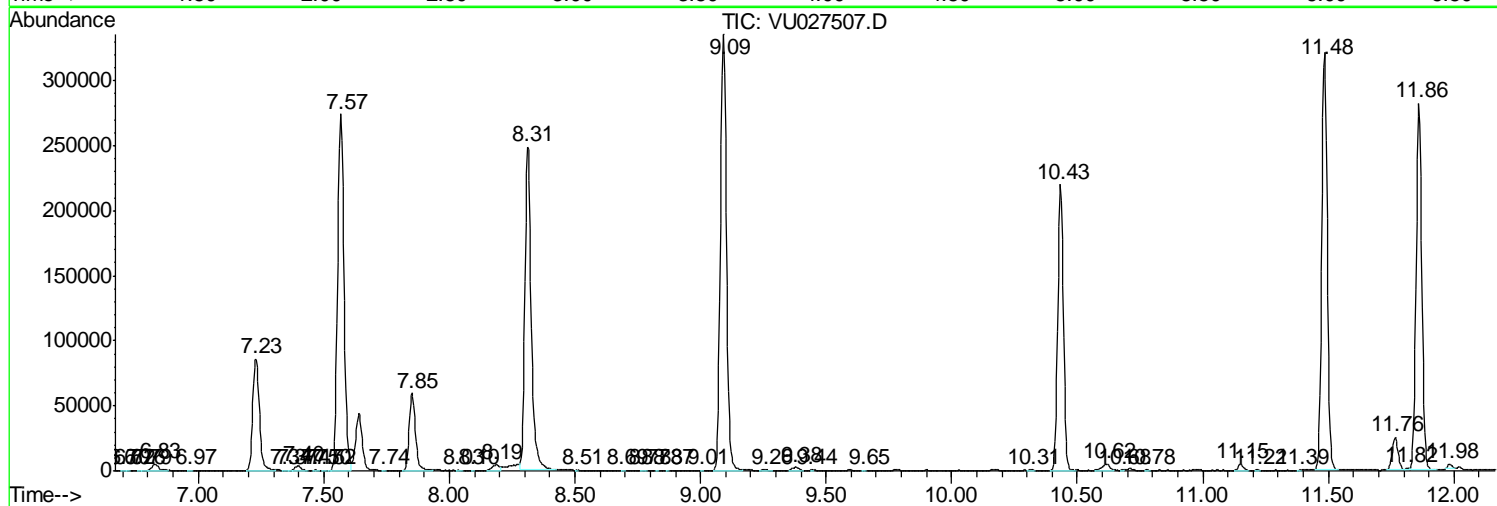
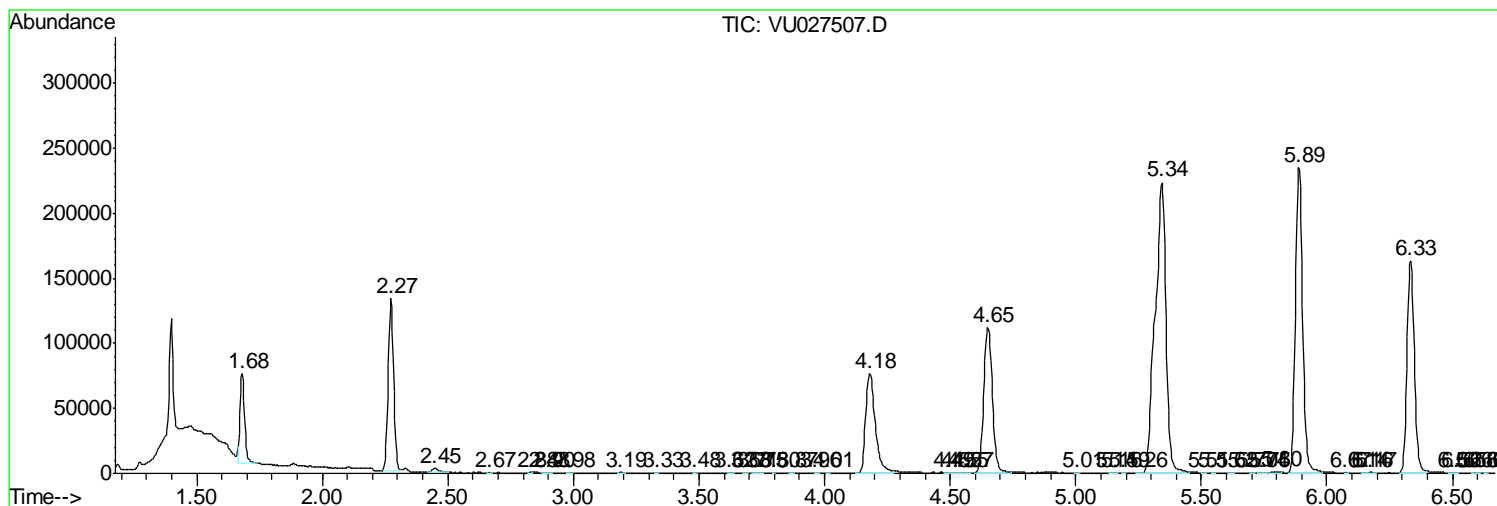
Sum of corrected areas: 5437079

Data Path : Z:\VOASRV\HPCHEM1\MSVOA U\DATA\VU100818\  
 Data File : VU027507.D  
 Acq On : 08 Oct 2018 18:25  
 Operator : MD/SY  
 Sample : J5298-07  
 Misc : 5.0mL/MSVOA U/WATER  
 ALS Vial : 22 Sample Multiplier: 1

**Instrument :**  
 MSVOA\_U  
**ClientSampled :**  
 E62W0

Quant Method : Z:\VOASRV\HPCHEM1\MSVOA\_U\METHOD\SOMULM100518WMA.M  
 Quant Title : VOC Analysis

TIC Library : C:\DATABASE\NIST11.L  
 TIC Integration Parameters: LSCINT.P



Data Path : Z:\VOASRV\HPCHEM1\MSVOA U\DATA\VU100818\  
 Data File : VU027507.D  
 Acq On : 08 Oct 2018 18:25  
 Operator : MD/SY  
 Sample : J5298-07  
 Misc : 5.0mL/MSVOA U/WATER  
 ALS Vial : 22 Sample Multiplier: 1

Instrument :  
 MSVOA\_U  
 ClientSampleID :  
 E62W0

Quant Method : Z:\VOASRV\HPCHEM1\MSVOA\_U\METHOD\SOMULM100518WMA.M  
 Quant Title : VOC Analysis

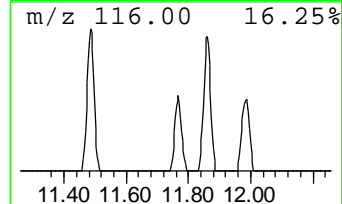
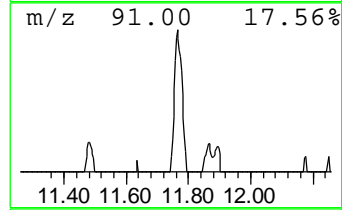
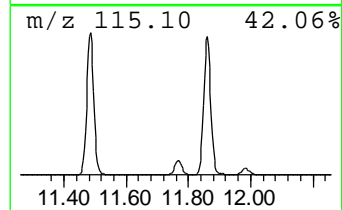
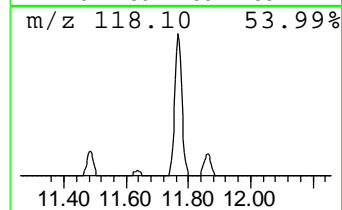
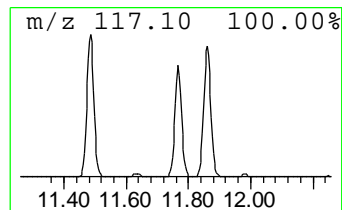
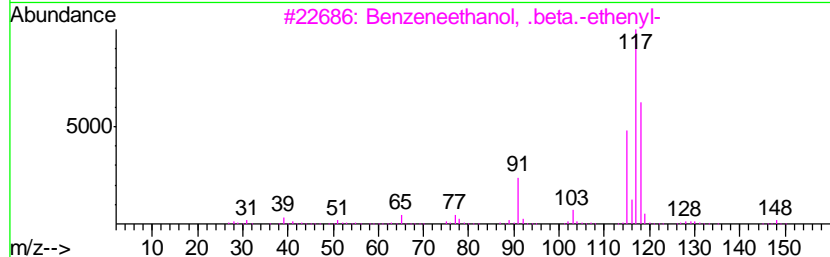
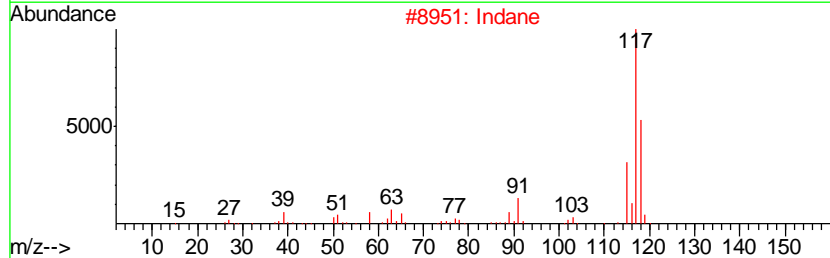
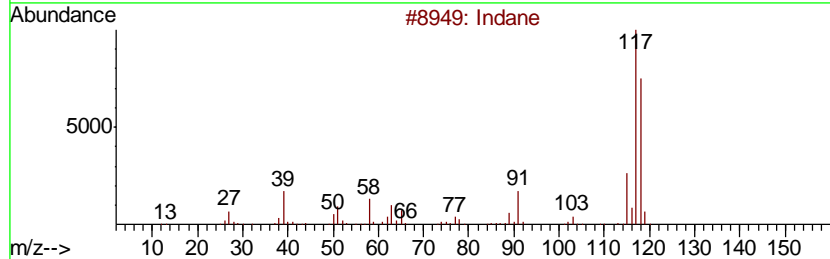
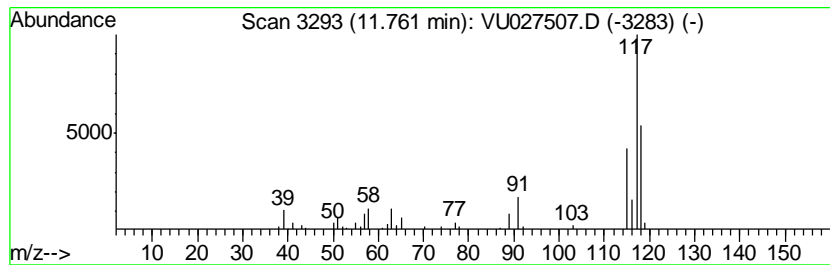
TIC Library : C:\DATABASE\NIST11.L  
 TIC Integration Parameters: LSCINT.P

\*\*\*\*\*  
 Peak Number 2 Indane Concentration Rank 2

R.T.	EstConc	Area	Relative to ISTD	R.T.
11.76	4.15 ug/L	40893	1,4-Dichlorobenzene-d4	11.48

Hit#	of	Tentative ID	MW	MolForm	CAS#	Qual
1	5	Indane	118	C9H10	000496-11-7	94
2		Indane	118	C9H10	000496-11-7	90
3		Benzeneethanol, .beta.-ethenyl-	148	C10H12O	006052-63-7	72
4		Indane	118	C9H10	000496-11-7	64
5		(Z)-1-Phenylpropene	118	C9H10	000766-90-5	62



Data Path : Z:\VOASRV\HPCHEM1\MSVOA U\DATA\VU100818\  
 Data File : VU027507.D  
 Acq On : 08 Oct 2018 18:25  
 Operator : MD/SY  
 Sample : J5298-07  
 Misc : 5.0mL/MSVOA U/WATER  
 ALS Vial : 22 Sample Multiplier: 1

Instrument :  
 MSVOA\_U  
 ClientSampleID :  
 E62W0

Quant Method : Z:\VOASRV\HPCHEM1\MSVOA\_U\METHOD\SOMULM100518WMA.M  
 Quant Title : VOC Analysis

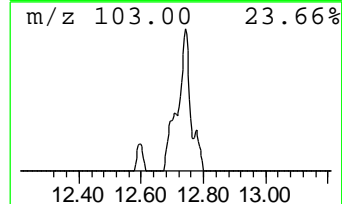
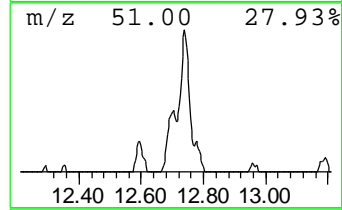
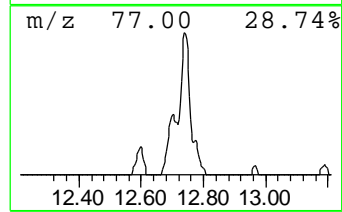
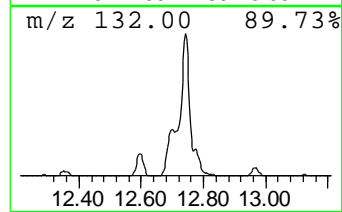
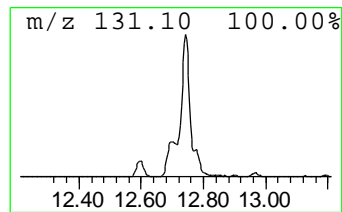
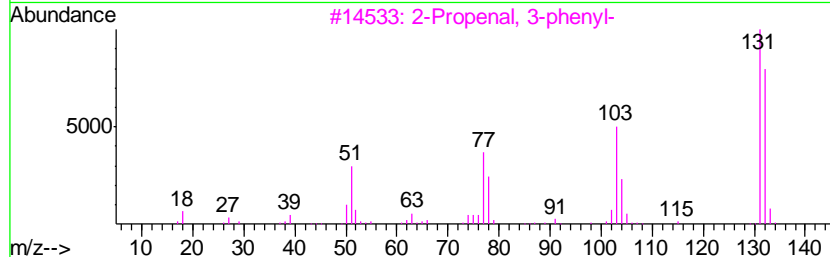
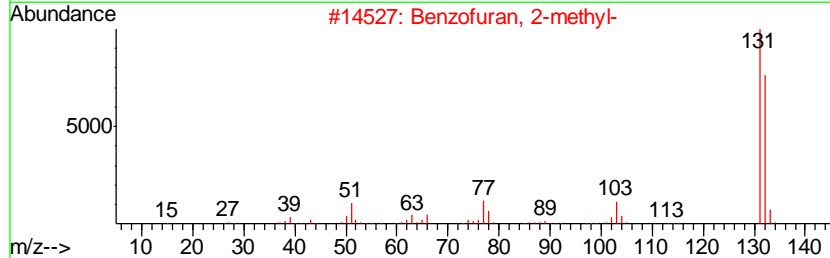
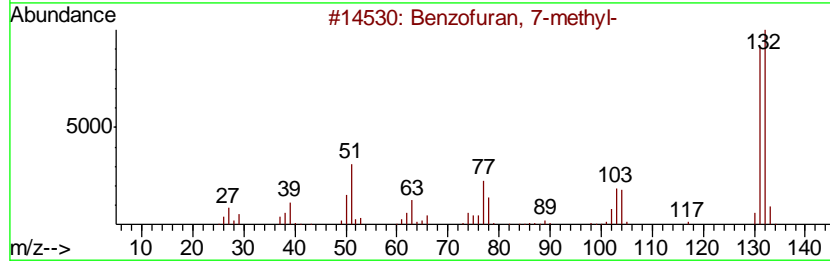
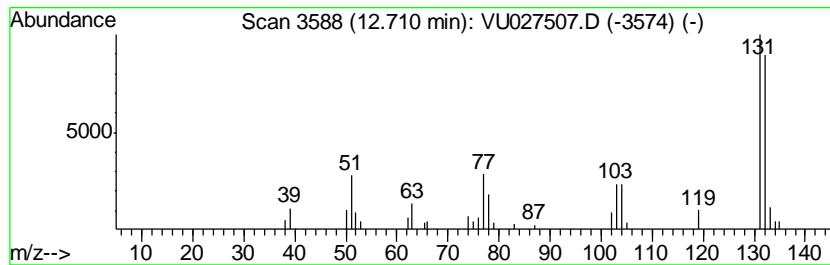
TIC Library : C:\DATABASE\NIST11.L  
 TIC Integration Parameters: LSCINT.P

\*\*\*\*\*  
 Peak Number 3 Benzofuran, 7-methyl- Concentration Rank 3

R.T.	EstConc	Area	Relative to ISTD	R.T.
12.71	3.40 ug/L	33507	1,4-Dichlorobenzene-d4	11.48

Hit#	of	Tentative ID	MW	MolForm	CAS#	Qual
1	5	Benzofuran, 7-methyl-	132	C9H8O	017059-52-8	95
2		Benzofuran, 2-methyl-	132	C9H8O	004265-25-2	91
3		2-Propenal, 3-phenyl-	132	C9H8O	000104-55-2	91
4		Benzofuran, 2-methyl-	132	C9H8O	004265-25-2	87
5		3-Phenyl-2-propyn-1-ol	132	C9H8O	001504-58-1	87



Data Path : Z:\VOASRV\HPCHEM1\MSVOA\_U\DATA\VU100818\  
Data File : VU027507.D  
Acq On : 08 Oct 2018 18:25  
Operator : MD/SY  
Sample : J5298-07  
Misc : 5.0mL/MSVOA\_U/WATER  
ALS Vial : 22 Sample Multiplier: 1

Instrument :  
MSVOA\_U  
ClientSampleId :  
E62W0

Quant Method : Z:\VOASRV\HPCHEM1\MSVOA\_U\METHOD\SOMULM100518WMA.M  
Quant Title : VOC Analysis

TIC Library : C:\DATABASE\NIST11.L  
TIC Integration Parameters: LSCINT.P

TIC Top Hit name	RT	EstConc	Units	Response	--Internal Standard--			
					#	RT	Resp	Conc
Indane	11.76	4.2	ug/L	40893	3	11.48	493059	50.0
Benzofuran, 7-met...	12.71	3.4	ug/L	33507	3	11.48	493059	50.0