

Data Path : Z:\VOASRV\HPCHEM1\MSVOA U\DATA\VU100818\
 Data File : VU027517.D
 Acq On : 08 Oct 2018 22:16
 Operator : MD/SY
 Sample : J5298-17
 Misc : 5.0mL/MSVOA U/WATER
 ALS Vial : 32 Sample Multiplier: 1

Instrument :
 MSVOA_U
 ClientSampled :
 E62X0

Integration Parameters: LSCINT.P

Integrator: RTE
 Smoothing : OFF
 Sampling : 1
 Start Thrs: 0.2
 Stop Thrs : 0

Filtering: 5
 Min Area: 0 % of largest Peak
 Max Peaks: 100
 Peak Location: TOP

If leading or trailing edge < 100 prefer < Baseline drop else tangent >
 Peak separation: 5

Method : Z:\VOASRV\HPCHEM1\MSVOA_U\METHOD\SOMULM100518WMA.M
 Title : VOC Analysis

Signal : TIC

peak #	R.T. min	first scan	max scan	last scan	PK TY	peak height	corr. area	corr. % max.	% of total
1	1.398	64	70	80	rBV	77760	81648	12.76%	1.572%
2	1.681	152	158	173	rVB	64258	81329	12.71%	1.565%
3	2.273	332	342	355	rBV	117851	177265	27.69%	3.412%
4	2.649	455	459	463	rBV2	223	163	0.03%	0.003%
5	2.697	472	474	478	rVB	266	155	0.02%	0.003%
6	2.800	504	506	511	rVB	177	91	0.01%	0.002%
7	2.832	511	516	522	rVB2	223	307	0.05%	0.006%
8	3.061	584	587	593	rBV	178	189	0.03%	0.004%
9	3.090	593	596	599	rVB	156	103	0.02%	0.002%
10	3.128	605	608	611	rVB2	159	102	0.02%	0.002%
11	3.189	620	627	636	rBV3	740	1060	0.17%	0.020%
12	3.263	647	650	652	rBV	85	62	0.01%	0.001%
13	3.308	661	664	669	rVB	176	102	0.02%	0.002%
14	3.405	692	694	700	rVB	189	93	0.01%	0.002%
15	3.437	700	704	705	rBV	117	69	0.01%	0.001%
16	3.466	709	713	717	rBV	144	70	0.01%	0.001%
17	3.492	718	721	722	rBV	142	72	0.01%	0.001%
18	3.556	738	741	744	rVV	114	79	0.01%	0.002%
19	3.582	745	749	756	rVB	106	117	0.02%	0.002%
20	3.768	802	807	810	rBV	122	124	0.02%	0.002%
21	3.794	813	815	820	rVB	141	100	0.02%	0.002%
22	3.887	840	844	850	rVB	223	191	0.03%	0.004%
23	3.916	850	853	856	rBV	116	84	0.01%	0.002%
24	3.955	860	865	868	rBV	215	137	0.02%	0.003%
25	4.032	887	889	894	rVB	216	124	0.02%	0.002%
26	4.058	894	897	900	rBV	110	72	0.01%	0.001%
27	4.115	911	915	919	rBV	150	146	0.02%	0.003%
28	4.180	922	935	962	rBV	72851	192717	30.11%	3.710%
29	4.546	1047	1049	1052	rVB	92	50	0.01%	0.001%
30	4.575	1052	1058	1062	rBV	170	187	0.03%	0.004%
31	4.649	1062	1081	1105	rBV	106452	251301	39.26%	4.837%
32	4.807	1128	1130	1135	rVB	164	96	0.01%	0.002%
33	4.829	1135	1137	1140	rBV2	119	95	0.01%	0.002%
34	5.096	1217	1220	1222	rBV	141	114	0.02%	0.002%

Data Path : Z:\VOASRV\HPCHEM1\MSVOA U\DATA\VU100818\
 Data File : VU027517.D
 Acq On : 08 Oct 2018 22:16
 Operator : MD/SY
 Sample : J5298-17
 Misc : 5.0mL/MSVOA U/WATER
 ALS Vial : 32 Sample Multiplier: 1

Instrument :
 MSVOA_U
 ClientSampleId :
 E62X0

Integration Parameters: LSCINT.P

Integrator: RTE
 Smoothing : OFF
 Sampling : 1
 Start Thrs: 0.2
 Stop Thrs : 0

Filtering: 5
 Min Area: 0 % of largest Peak
 Max Peaks: 100
 Peak Location: TOP

If leading or trailing edge < 100 prefer < Baseline drop else tangent >
 Peak separation: 5

Method : Z:\VOASRV\HPCHEM1\MSVOA_U\METHOD\SOMULM100518WMA.M
 Title : VOC Analysis

35	5.212	1253	1256	1259	rVV2	181	135	0.02%	0.003%
36	5.344	1273	1297	1328	rBV2	209884	640083	100.00%	12.321%
37	5.517	1349	1351	1354	rVB	150	101	0.02%	0.002%
38	5.553	1360	1362	1364	rBV	130	83	0.01%	0.002%
39	5.588	1370	1373	1374	rBV	140	93	0.01%	0.002%
40	5.627	1382	1385	1387	rBV	148	124	0.02%	0.002%
41	5.665	1393	1397	1399	rBV2	134	107	0.02%	0.002%
42	5.713	1409	1412	1414	rBV2	126	90	0.01%	0.002%
43	5.742	1419	1421	1423	rBV	154	97	0.02%	0.002%
44	5.794	1426	1437	1447	rBV4	1690	3306	0.52%	0.064%
45	5.890	1453	1467	1507	rVB	226174	449507	70.23%	8.652%
46	6.131	1539	1542	1545	rVB	168	74	0.01%	0.001%
47	6.176	1550	1556	1564	rBV4	759	879	0.14%	0.017%
48	6.215	1565	1568	1569	rBV4	130	56	0.01%	0.001%
49	6.237	1573	1575	1578	rBV	222	155	0.02%	0.003%
50	6.334	1591	1605	1632	rBV	154214	311433	48.66%	5.995%
51	6.511	1656	1660	1662	rBV	201	180	0.03%	0.003%
52	6.549	1669	1672	1675	rBV	135	63	0.01%	0.001%
53	6.569	1675	1678	1683	rVB	83	62	0.01%	0.001%
54	6.594	1683	1686	1688	rBV	181	111	0.02%	0.002%
55	6.623	1693	1695	1699	rVB2	212	128	0.02%	0.002%
56	6.729	1724	1728	1734	rVB2	220	262	0.04%	0.005%
57	6.829	1746	1759	1767	rBV4	12526	23841	3.72%	0.459%
58	6.932	1790	1791	1794	rVV	94	55	0.01%	0.001%
59	7.000	1810	1812	1815	rBV2	204	127	0.02%	0.002%
60	7.077	1834	1836	1838	rBV	152	74	0.01%	0.001%
61	7.170	1862	1865	1869	rBV	136	89	0.01%	0.002%
62	7.228	1872	1883	1910	rVV	78532	141945	22.18%	2.732%
63	7.395	1924	1935	1950	rVB2	15106	28814	4.50%	0.555%
64	7.472	1956	1959	1961	rBV	157	67	0.01%	0.001%
65	7.488	1961	1964	1970	rVB2	159	123	0.02%	0.002%
66	7.524	1973	1975	1976	rBV	156	83	0.01%	0.002%
67	7.565	1976	1988	2001	rVV	257194	450676	70.41%	8.675%
68	7.639	2003	2011	2031	rVB	74722	132061	20.63%	2.542%
69	7.752	2044	2046	2048	rVB	160	79	0.01%	0.002%
70	7.852	2063	2077	2096	rBV	55726	95768	14.96%	1.843%
71	8.122	2158	2161	2164	rBV	82	61	0.01%	0.001%

Data Path : Z:\VOASRV\HPCHEM1\MSVOA U\DATA\VU100818\
 Data File : VU027517.D
 Acq On : 08 Oct 2018 22:16
 Operator : MD/SY
 Sample : J5298-17
 Misc : 5.0mL/MSVOA U/WATER
 ALS Vial : 32 Sample Multiplier: 1

Instrument :
 MSVOA_U
 ClientSampleId :
 E62X0

Integration Parameters: LSCINT.P

Integrator: RTE
 Smoothing : OFF
 Sampling : 1
 Start Thrs: 0.2
 Stop Thrs : 0

Filtering: 5
 Min Area: 0 % of largest Peak
 Max Peaks: 100
 Peak Location: TOP

If leading or trailing edge < 100 prefer < Baseline drop else tangent >
 Peak separation: 5

Method : Z:\VOASRV\HPCHEM1\MSVOA_U\METHOD\SOMULM100518WMA.M
 Title : VOC Analysis

72	8.141	2164	2167	2169	rBV2	156	87	0.01%	0.002%
73	8.183	2169	2180	2186	rBV4	2646	5456	0.85%	0.105%
74	8.311	2210	2220	2246	rVB	233274	408191	63.77%	7.857%
75	8.578	2300	2303	2307	rBV	328	240	0.04%	0.005%
76	8.643	2320	2323	2327	rVB2	182	136	0.02%	0.003%
77	8.774	2363	2364	2367	rVB2	161	83	0.01%	0.002%
78	8.823	2376	2379	2380	rBV2	128	61	0.01%	0.001%
79	8.919	2406	2409	2413	rBV2	147	135	0.02%	0.003%
80	8.945	2415	2417	2419	rBV2	114	49	0.01%	0.001%
81	9.003	2432	2435	2437	rBV	220	141	0.02%	0.003%
82	9.089	2450	2462	2487	rBV	316470	529391	82.71%	10.190%
83	9.257	2510	2514	2519	rBV2	294	319	0.05%	0.006%
84	9.295	2524	2526	2532	rVB2	178	139	0.02%	0.003%
85	9.369	2541	2549	2563	rBV4	3355	5492	0.86%	0.106%
86	9.659	2637	2639	2643	rVB	173	59	0.01%	0.001%
87	9.713	2654	2656	2662	rBV2	126	121	0.02%	0.002%
88	9.739	2662	2664	2666	rVB	170	50	0.01%	0.001%
89	9.781	2674	2677	2680	rBV3	322	271	0.04%	0.005%
90	10.022	2749	2752	2757	rBV	162	134	0.02%	0.003%
91	10.105	2774	2778	2782	rBV	289	280	0.04%	0.005%
92	10.234	2815	2818	2819	rBV	175	90	0.01%	0.002%
93	10.379	2860	2863	2866	rBV	231	189	0.03%	0.004%
94	10.433	2868	2880	2901	rVB	208539	334409	52.24%	6.437%
95	10.614	2928	2936	2949	rVB4	2493	4498	0.70%	0.087%
96	10.668	2950	2953	2956	rBV	186	112	0.02%	0.002%
97	10.954	3039	3042	3046	rVB2	258	178	0.03%	0.003%
98	11.224	3123	3126	3128	rBV	214	160	0.02%	0.003%
99	11.485	3195	3207	3225	rBV	282233	439743	68.70%	8.464%
100	11.861	3312	3324	3343	rBV	245639	395339	61.76%	7.610%

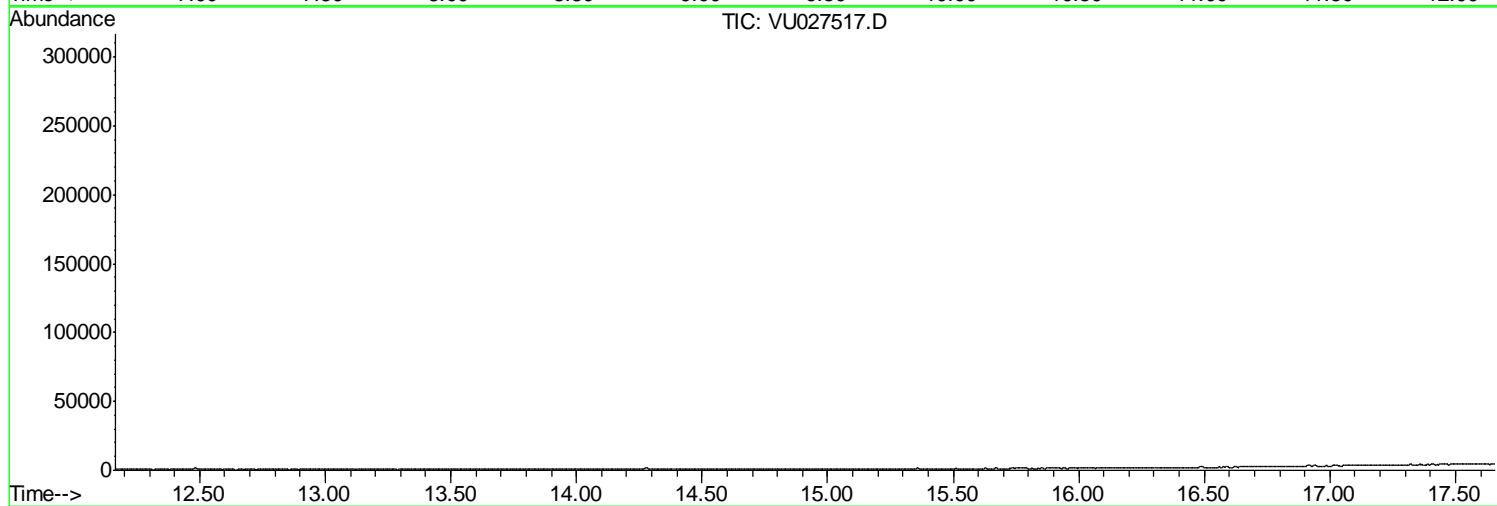
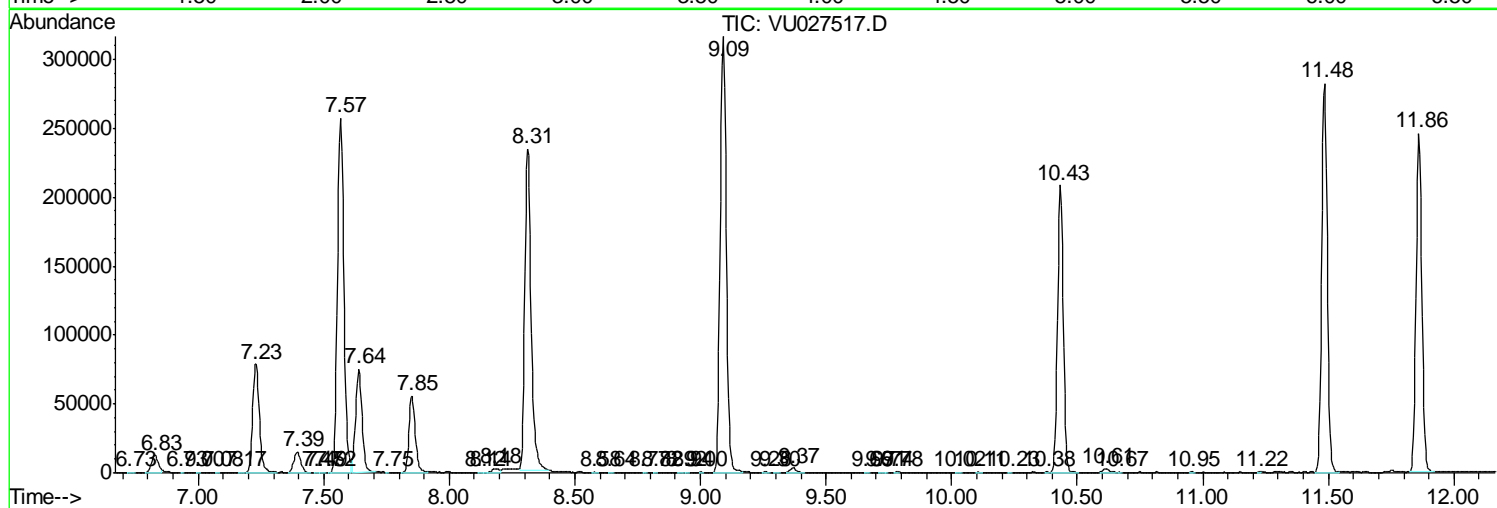
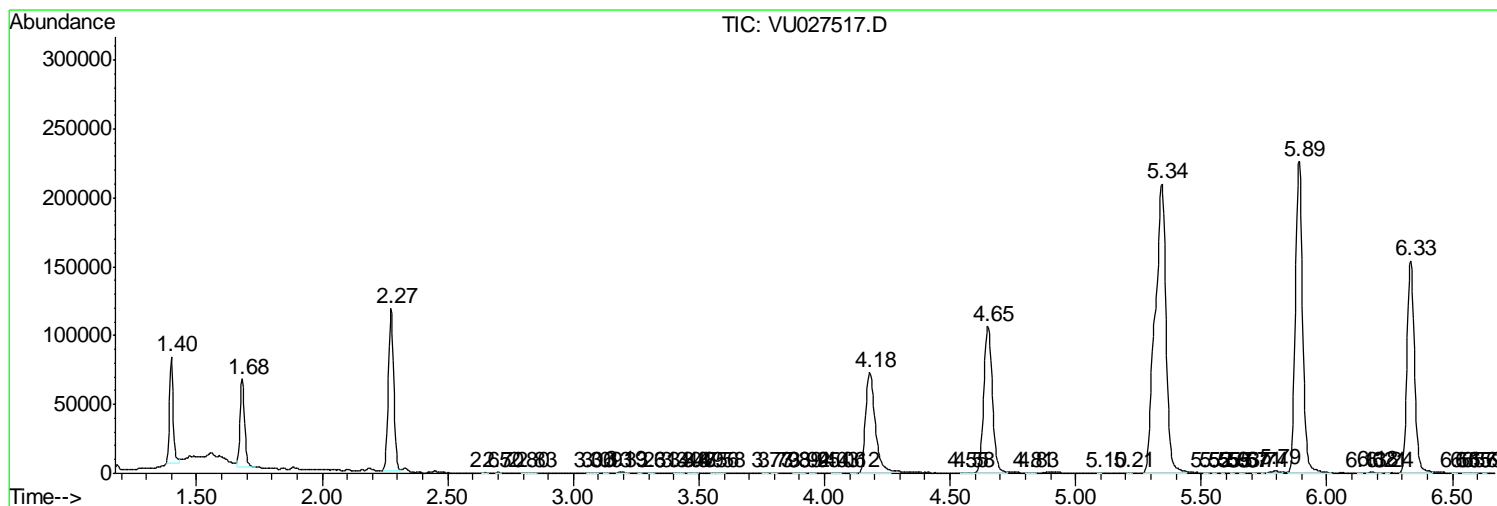
Sum of corrected areas: 5195159

Data Path : Z:\VOASRV\HPCHEM1\MSVOA U\DATA\VU100818\
 Data File : VU027517.D
 Acq On : 08 Oct 2018 22:16
 Operator : MD/SY
 Sample : J5298-17
 Misc : 5.0mL/MSVOA U/WATER
 ALS Vial : 32 Sample Multiplier: 1

Instrument :
 MSVOA_U
ClientSampled :
 E62X0

Quant Method : Z:\VOASRV\HPCHEM1\MSVOA_U\METHOD\SOMULM100518WMA.M
 Quant Title : VOC Analysis

TIC Library : C:\DATABASE\NIST11.L
 TIC Integration Parameters: LSCINT.P



Data Path : Z:\VOASRV\HPCHEM1\MSVOA U\DATA\VU100818\
 Data File : VU027517.D
 Acq On : 08 Oct 2018 22:16
 Operator : MD/SY
 Sample : J5298-17
 Misc : 5.0mL/MSVOA U/WATER
 ALS Vial : 32 Sample Multiplier: 1

Instrument :
 MSVOA_U
 ClientSampleID :
 E62X0

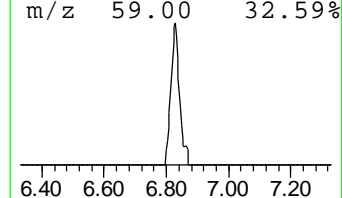
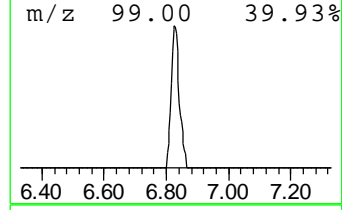
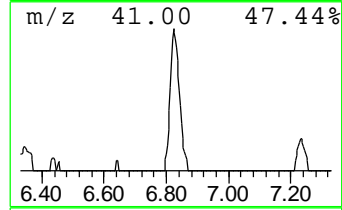
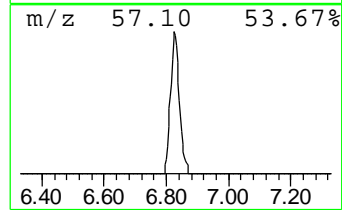
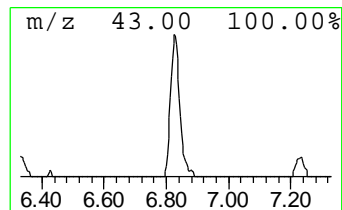
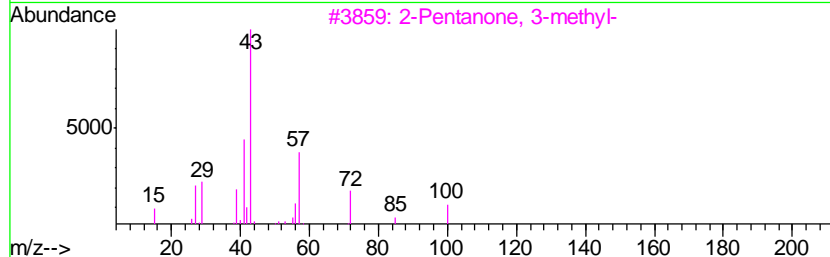
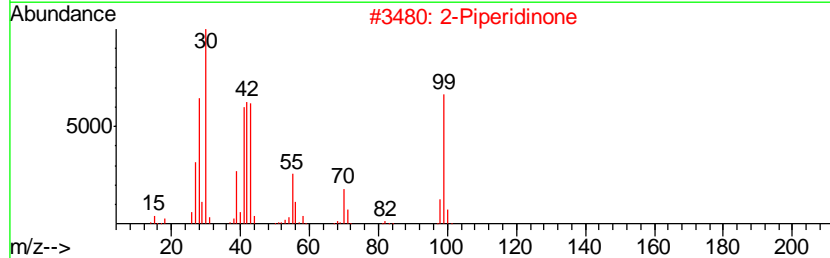
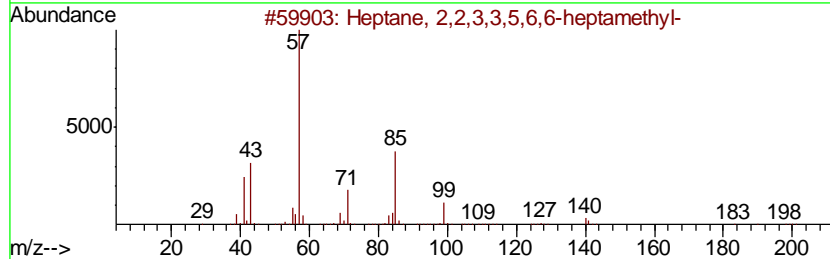
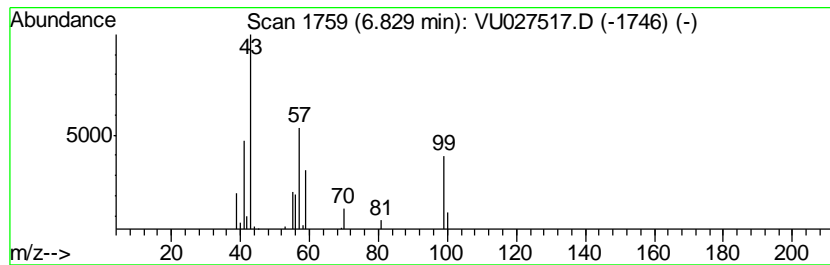
Quant Method : Z:\VOASRV\HPCHEM1\MSVOA_U\METHOD\SOMULM100518WMA.M
 Quant Title : VOC Analysis

TIC Library : C:\DATABASE\NIST11.L
 TIC Integration Parameters: LSCINT.P

 Peak Number 1 (DEL) Alkane: Straight-Chai... Concentration Rank 3

R.T.	EstConc	Area	Relative to ISTD	R.T.
6.83	2.65 ug/L	23841	1,4-Difluorobenzene	5.89

Hit#	of	Tentative ID	MW	MolForm	CAS#	Qual
1	5	Heptane, 2,2,3,3,5,6,6-heptamethyl-	198	C14H30	007225-67-4	33
2		2-Piperidinone	99	C5H9NO	000675-20-7	32
3		2-Pentanone, 3-methyl-	100	C6H12O	000565-61-7	27
4		Heptane	100	C7H16	000142-82-5	27
5		2-Piperidinone	99	C5H9NO	000675-20-7	27



Data Path : Z:\VOASRV\HPCHEM1\MSVOA U\DATA\VU100818\
 Data File : VU027517.D
 Acq On : 08 Oct 2018 22:16
 Operator : MD/SY
 Sample : J5298-17
 Misc : 5.0mL/MSVOA U/WATER
 ALS Vial : 32 Sample Multiplier: 1

Instrument :
 MSVOA_U
 ClientSampleID :
 E62X0

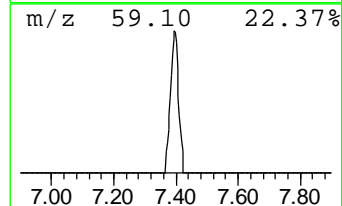
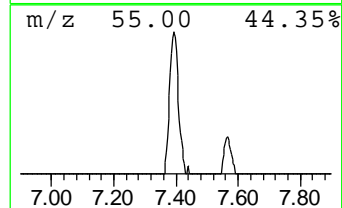
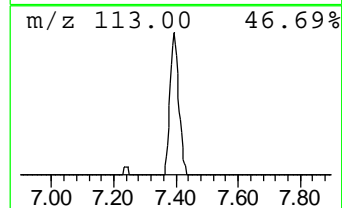
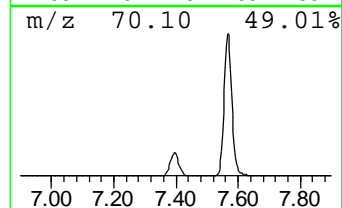
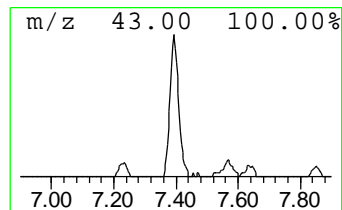
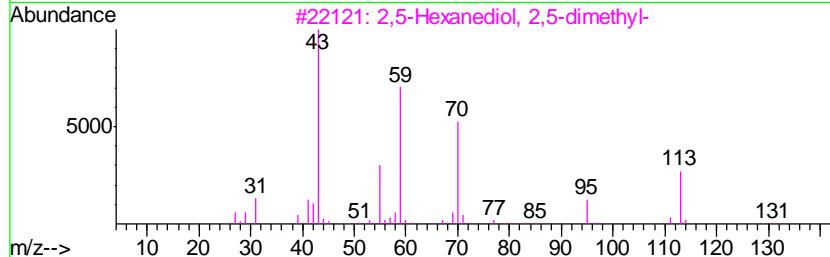
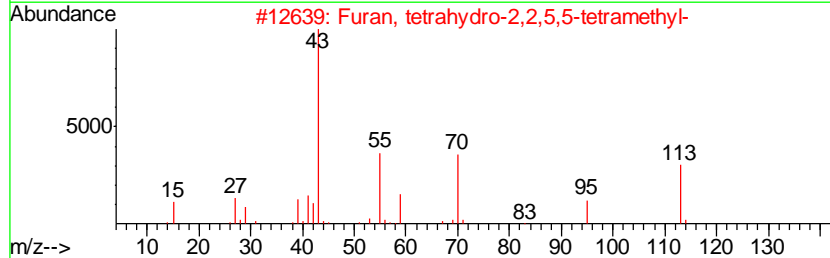
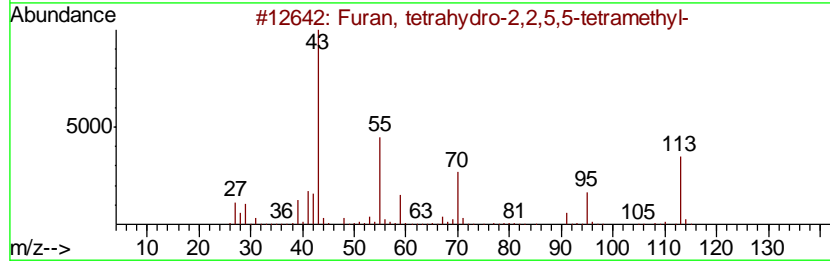
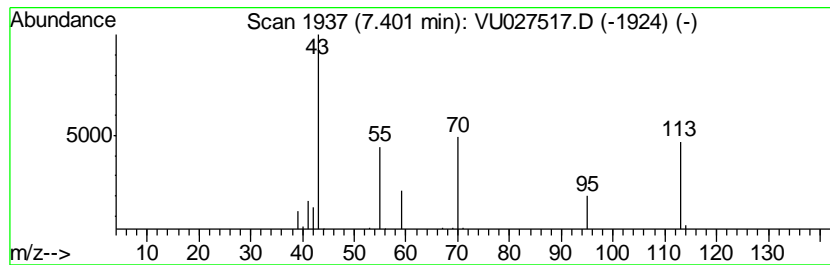
Quant Method : Z:\VOASRV\HPCHEM1\MSVOA_U\METHOD\SOMULM100518WMA.M
 Quant Title : VOC Analysis

TIC Library : C:\DATABASE\NIST11.L
 TIC Integration Parameters: LSCINT.P

 Peak Number 3 Furan, tetrahydro-2,2,5,5-t... Concentration Rank 2

R.T.	EstConc	Area	Relative to ISTD	R.T.
7.40	3.21 ug/L	28814	1,4-Difluorobenzene	5.89

Hit#	of	Tentative ID	MW	MolForm	CAS#	Qual
1	5	Furan, tetrahydro-2,2,5,5-tetram...	128	C8H16O	015045-43-9	72
2		Furan, tetrahydro-2,2,5,5-tetram...	128	C8H16O	015045-43-9	64
3		2,5-Hexanediol, 2,5-dimethyl-	146	C8H18O2	000110-03-2	50
4		Furan, tetrahydro-2,2,4,4-tetram...	128	C8H16O	003358-28-9	50
5		4-Piperidinone, 1-methyl-	113	C6H11NO	001445-73-4	47



Data Path : Z:\VOASRV\HPCHEM1\MSVOA_U\DATA\VU100818\
Data File : VU027517.D
Acq On : 08 Oct 2018 22:16
Operator : MD/SY
Sample : J5298-17
Misc : 5.0mL/MSVOA_U/WATER
ALS Vial : 32 Sample Multiplier: 1

Instrument :
MSVOA_U
ClientSampleId :
E62X0

Quant Method : Z:\VOASRV\HPCHEM1\MSVOA_U\METHOD\SOMULM100518WMA.M
Quant Title : VOC Analysis

TIC Library : C:\DATABASE\NIST11.L
TIC Integration Parameters: LSCINT.P

TIC Top Hit name	RT	EstConc	Units	Response	--Internal Standard--			
					#	RT	Resp	Conc
(DEL) Alkane: Str...	6.83	2.6	ug/L	23841	1	5.89	449507	50.0
Furan, tetrahydro...	7.40	3.2	ug/L	28814	1	5.89	449507	50.0