

Data Path : Z:\VOASRV\HPCHEM1\MSVOA U\DATA\VU100819\
 Data File : VU034987.D
 Acq On : 08 Oct 2019 12:40
 Operator : JC/SP
 Sample : MDL05
 Misc : 25.0mL/MSVOA U/WATER
 ALS Vial : 11 Sample Multiplier: 1

Instrument :
 MSVOA_U
 ClientSampled :
 MDL05

Manual Integrations
 APPROVED

MMDadoda
 10/9/2019 3:48:01 PM

Quant Time: Oct 09 07:52:55 2019
 Quant Method : Z:\VOASRV\HPCHEM1\MSVOA_U\METHOD\SOMUTR100719WMA.M
 Quant Title : TRACE VOA SOM01.0
 QLast Update : Wed Oct 09 07:15:09 2019
 Response via : Initial Calibration

Internal Standards	R.T.	QIon	Response	Conc	Units	Dev(Min)
1) 1,4-Difluorobenzene	5.86	114	175785	5.00	ug/L	0.00
28) Chlorobenzene-d5	9.07	117	175994	5.00	ug/L	0.00
60) 1,4-Dichlorobenzene-d4	11.46	152	75090	5.00	ug/L	0.00

System Monitoring Compounds

4) Vinyl Chloride-d3	1.39	65	45758	4.40	ug/L	0.00
Spiked Amount	5.000	Range	40 - 130	Recovery	=	88.00%
7) Chloroethane-d5	1.67	69	44258	4.56	ug/L	0.00
Spiked Amount	5.000	Range	65 - 130	Recovery	=	91.20%
11) 1,1-Dichloroethene-d2	2.26	63	70962	3.24	ug/L	0.00
Spiked Amount	5.000	Range	60 - 125	Recovery	=	64.80%
20) 2-Butanone-d5	4.19	46	153387	50.13	ug/L	0.00
Spiked Amount	50.000	Range	40 - 130	Recovery	=	100.26%
24) Chloroform-d	4.62	84	87858	4.52	ug/L	0.00
Spiked Amount	5.000	Range	70 - 125	Recovery	=	90.40%
26) 1,2-Dichloroethane-d4	5.29	65	55879	4.80	ug/L	0.00
Spiked Amount	5.000	Range	70 - 130	Recovery	=	96.00%
32) Benzene-d6	5.32	84	191692	4.64	ug/L	0.00
Spiked Amount	5.000	Range	70 - 125	Recovery	=	92.80%
36) 1,2-Dichloropropane-d6	6.31	67	65738	4.77	ug/L	0.00
Spiked Amount	5.000	Range	60 - 140	Recovery	=	95.40%
41) Toluene-d8	7.54	98	174621	4.37	ug/L	0.00
Spiked Amount	5.000	Range	70 - 130	Recovery	=	87.40%
43) trans-1,3-Dichloropropene-	7.84	79	19797	3.99	ug/L	0.00
Spiked Amount	5.000	Range	55 - 130	Recovery	=	79.80%
46) 2-Hexanone-d5	8.30	63	112691	47.72	ug/L	0.00
Spiked Amount	50.000	Range	45 - 130	Recovery	=	95.44%
57) 1,1,2,2-Tetrachloroethane-	10.41	84	56740	4.88	ug/L	0.00
Spiked Amount	5.000	Range	65 - 120	Recovery	=	97.60%
64) 1,2-Dichlorobenzene-d4	11.84	152	64711	5.11	ug/L	0.00
Spiked Amount	5.000	Range	80 - 120	Recovery	=	102.20%

Target Compounds

Target Compounds	R.T.	QIon	Response	Conc	Units	Ovalue
2) Dichlorodifluoromethane	1.20	85	4521	0.281	ug/L	95
3) Chloromethane	1.32	50	5399	0.306	ug/L	91
5) Vinyl chloride	1.40	62	5203	0.301	ug/L	86
6) Bromomethane	1.62	94	2671	0.278	ug/L	99
8) Chloroethane	1.69	64	2748	0.265	ug/L	98
9) Trichlorofluoromethane	1.87	101	6140	0.293	ug/L	93
10) 1,1,2-Trichloro-1,2,2-trif	2.27	101	3718	0.309	ug/L	91
12) 1,1-Dichloroethene	2.27	96	3357	0.297	ug/L #	1
13) Acetone	2.33	43	7705	3.074	ug/L	98
14) Carbon disulfide	2.46	76	10062	0.268	ug/L	99
15) Methyl Acetate	2.62	43	1692	0.254	ug/L #	73
16) Methylene chloride	2.69	84	5797	0.415	ug/L	81
17) Methyl tert-butyl Ether	2.99	73	8950	0.291	ug/L	96
18) trans-1,2-Dichloroethene	2.96	96	3531	0.292	ug/L	88
19) 1,1-Dichloroethane	3.42	63	6385	0.266	ug/L	94
21) 2-Butanone	4.28	43	9861m	2.763	ug/L	
22) cis-1,2-Dichloroethene	4.20	96	3245	0.241	ug/L	90

Data Path : Z:\VOASRV\HPCHEM1\MSVOA U\DATA\VU100819\
 Data File : VU034987.D
 Acq On : 08 Oct 2019 12:40
 Operator : JC/SP
 Sample : MDL05
 Misc : 25.0mL/MSVOA U/WATER
 ALS Vial : 11 Sample Multiplier: 1

Instrument :
 MSVOA_U
 ClientSampled :
 MDL05

Manual Integrations
 APPROVED

MMDadoda
 10/9/2019 3:48:01 PM

Quant Time: Oct 09 07:52:55 2019
 Quant Method : Z:\VOASRV\HPCHEM1\MSVOA_U\METHOD\SOMUTR100719WMA.M
 Quant Title : TRACE VOA SOM01.0
 QLast Update : Wed Oct 09 07:15:09 2019
 Response via : Initial Calibration

Internal Standards	R.T.	QIon	Response	Conc	Units	Dev(Min)
23) Bromochloromethane	4.52	128	1283	0.227	ug/L	92
25) Chloroform	4.65	83	19891	0.737	ug/L	96
27) 1,2-Dichloroethane	5.39	62	4554	0.289	ug/L	95
29) 1,1,1-Trichloroethane	4.89	97	5133	0.260	ug/L #	84
30) Cyclohexane	4.96	56	5319	0.245	ug/L	98
31) Carbon tetrachloride	5.10	117	4322	0.252	ug/L	100
33) Benzene	5.37	78	14658	0.276	ug/L	100
34) Trichloroethene	6.17	95	3762	0.275	ug/L	88
35) Methylcyclohexane	6.39	83	5766	0.260	ug/L	94
37) 1,2-Dichloropropane	6.41	63	3621	0.253	ug/L #	92
38) Bromodichloromethane	6.74	83	4618	0.275	ug/L	94
39) cis-1,3-Dichloropropene	7.25	75	4963m	0.256	ug/L	
40) 4-Methyl-2-pentanone	7.45	43	21513	2.390	ug/L #	84
42) Toluene	7.62	91	14319	0.259	ug/L	97
44) trans-1,3-Dichloropropene	7.87	75	3526	0.235	ug/L	93
45) 1,1,2-Trichloroethane	8.05	97	2921	0.308	ug/L	80
47) Tetrachloroethene	8.21	164	3001	0.271	ug/L	78
48) 2-Hexanone	8.35	43	19741	3.199	ug/L	93
49) Dibromochloromethane	8.46	129	2712	0.247	ug/L	89
50) 1,2-Dibromoethane	8.57	107	2244	0.247	ug/L #	89
51) Chlorobenzene	9.10	112	9183	0.256	ug/L #	81
52) Ethylbenzene	9.23	91	16047	0.263	ug/L	100
53) m,p-Xylene	9.36	106	5078	0.225	ug/L	90
54) o-Xylene	9.76	106	4922	0.223	ug/L	75
55) Styrene	9.78	104	7549	0.211	ug/L	93
56) Isopropylbenzene	10.15	105	13242	0.225	ug/L	98
58) 1,1,2,2-Tetrachloroethane	10.44	83	3632	0.281	ug/L #	98
59) 1,2,3-Trichloropropane	10.48	75	2435m	0.263	ug/L	
61) Bromoform	9.94	173	1473	0.286	ug/L #	88
62) 1,3-Dichlorobenzene	11.40	146	6627	0.286	ug/L	97
63) 1,4-Dichlorobenzene	11.49	146	6823	0.292	ug/L	99
65) 1,2-Dichlorobenzene	11.86	146	6717	0.301	ug/L	93
67) 1,3,5-Trichlorobenzene	12.87	180	3676m	0.235	ug/L	
69) Naphthalene	13.84	128	2147m	0.118	ug/L	
70) 1,2,3-Trichlorobenzene	14.00	180	1917m	0.169	ug/L	

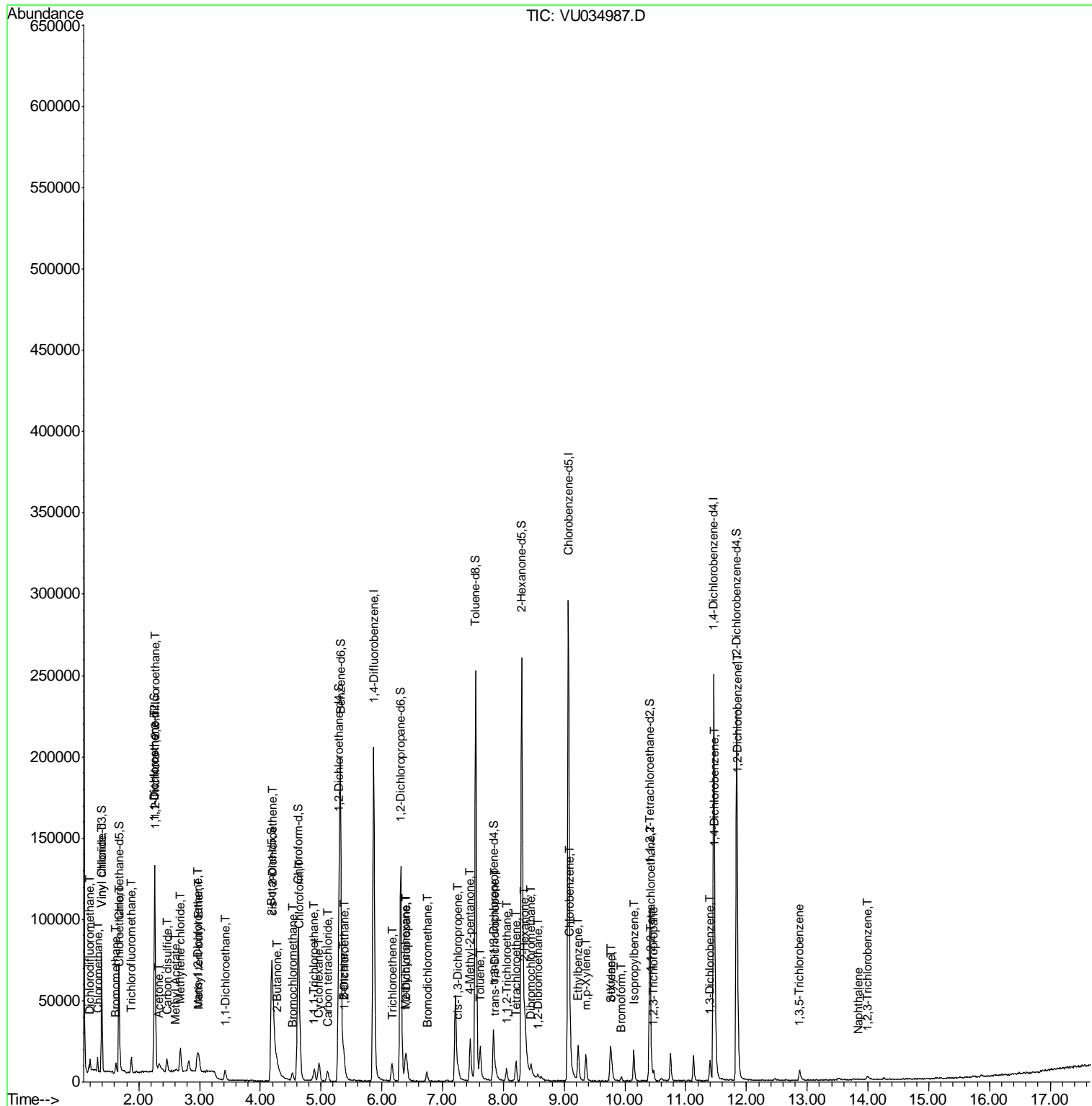
(#) = qualifier out of range (m) = manual integration (+) = signals summed

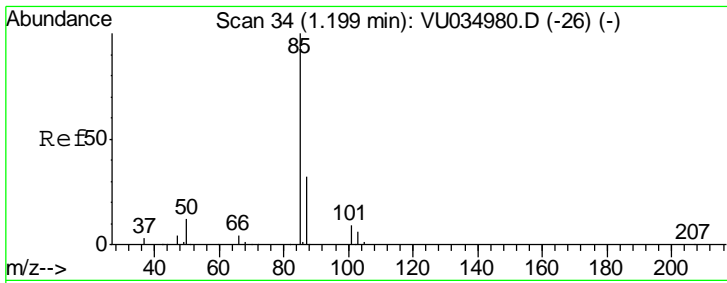
Data Path : Z:\VOASRV\HPCHEM1\MSVOA U\DATA\VU100819\
 Data File : VU034987.D
 Acq On : 08 Oct 2019 12:40
 Operator : JC/SP
 Sample : MDL05
 Misc : 25.0mL/MSVOA U/WATER
 ALS Vial : 11 Sample Multiplier: 1

Instrument :
 MSVOA_U
 Client Sampled :
 MDL05

Manual Integrations
 APPROVED
 MMDadoda
 10/9/2019 3:48:01 PM

Quant Time: Oct 09 07:52:55 2019
 Quant Method : Z:\VOASRV\HPCHEM1\MSVOA_U\METHOD\SOMUTR100719WMA.M
 Quant Title : TRACE VOA SOM01.0
 QLast Update : Wed Oct 09 07:15:09 2019
 Response via : Initial Calibration





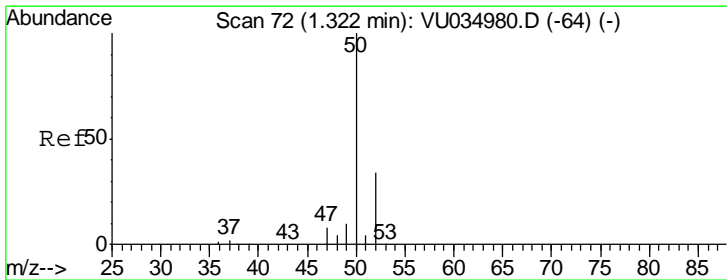
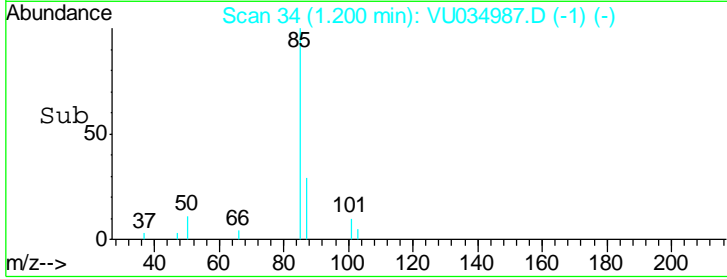
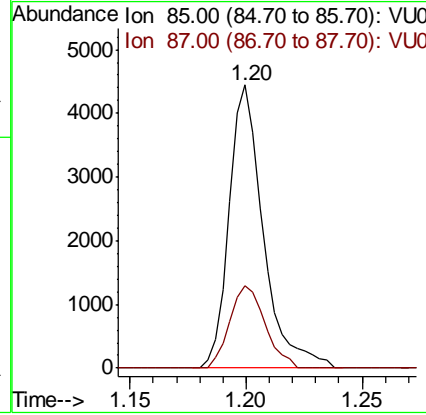
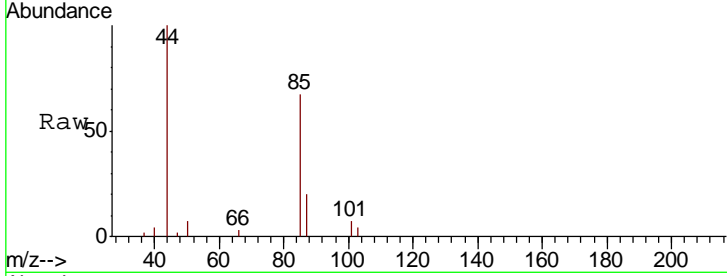
#2
 Dichlorodifluoromethane
 Concen: 0.281 ug/L
 RT: 1.20 min Scan# 34
 Delta R.T. 0.00 min
 Lab File: VU034987.D
 Acq: 08 Oct 2019 12:40

Instrument : MSVOA_U
 ClientSampled : MDL05

Tgt Ion	Resp	Lower	Upper
85	4521		
85	100		
87	30.0	26.3	39.5

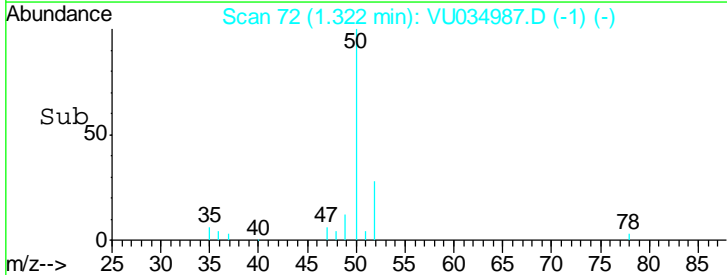
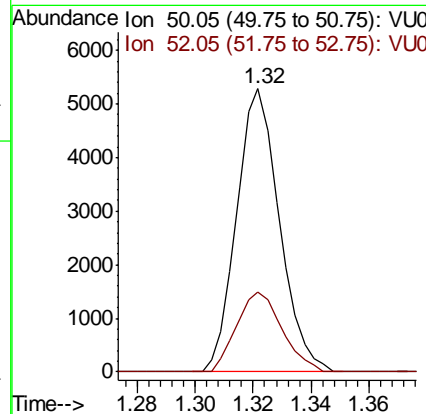
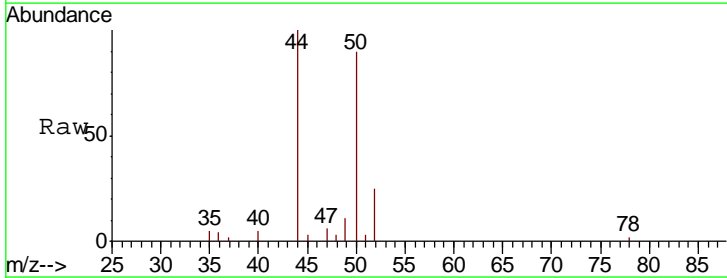
Manual Integrations
 APPROVED

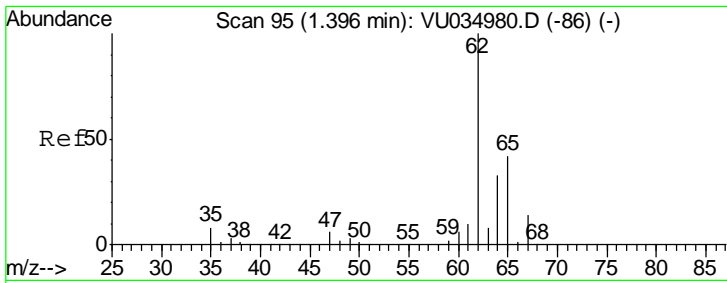
MMDadoda
 10/9/2019 3:48:01 PM



#3
 Chloromethane
 Concen: 0.306 ug/L
 RT: 1.32 min Scan# 72
 Delta R.T. 0.00 min
 Lab File: VU034987.D
 Acq: 08 Oct 2019 12:40

Tgt Ion	Resp	Lower	Upper
50	5399		
50	100		
52	28.2	23.3	43.3



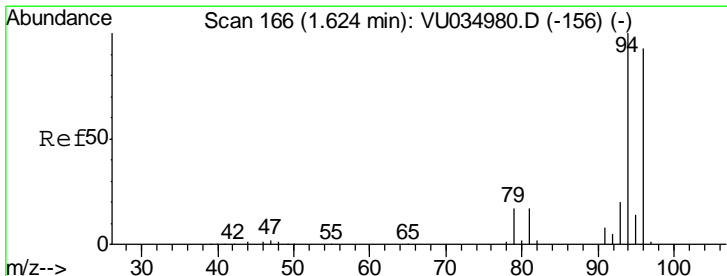
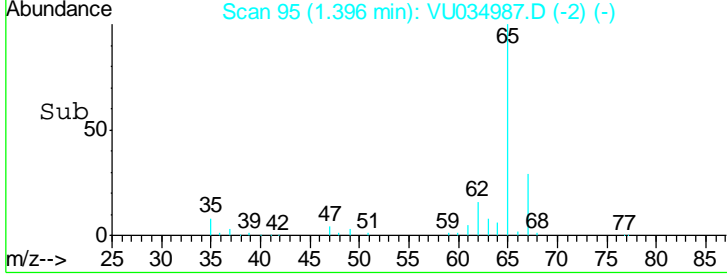
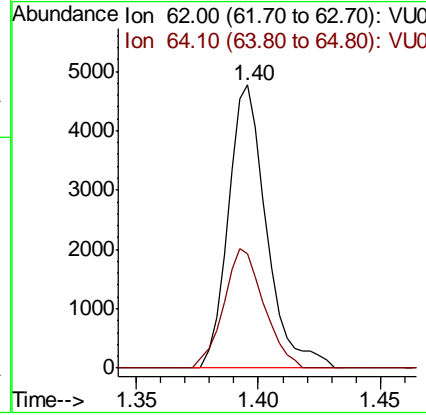
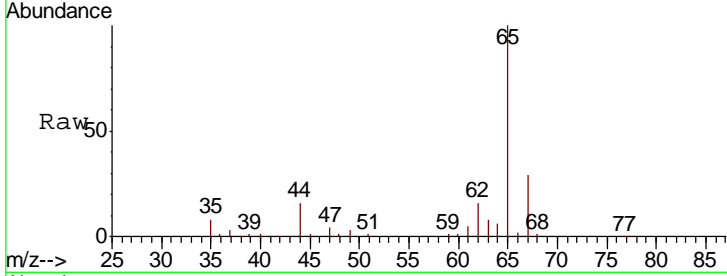


#5
 Vinyl chloride
 Concen: 0.301 ug/L
 RT: 1.40 min Scan# 95
 Delta R.T. 0.00 min
 Lab File: VU034987.D
 Acq: 08 Oct 2019 12:40

Instrument :
 MSVOA_U
 ClientSampled :
 MDL05

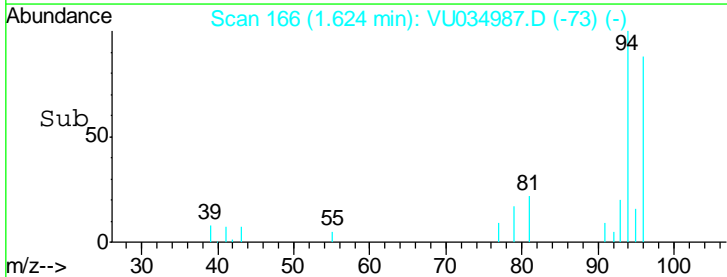
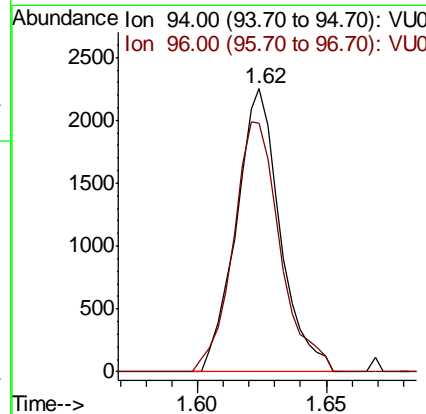
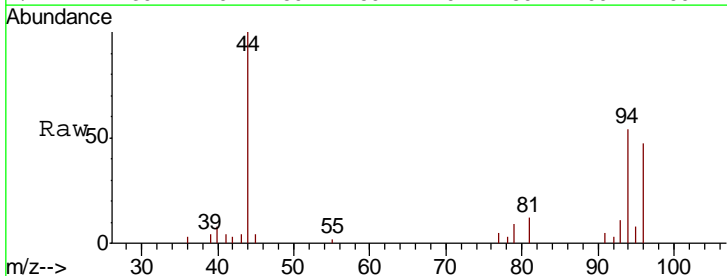
Tgt Ion	Resp	Lower	Upper
62	100		
64	40.2	22.8	42.4

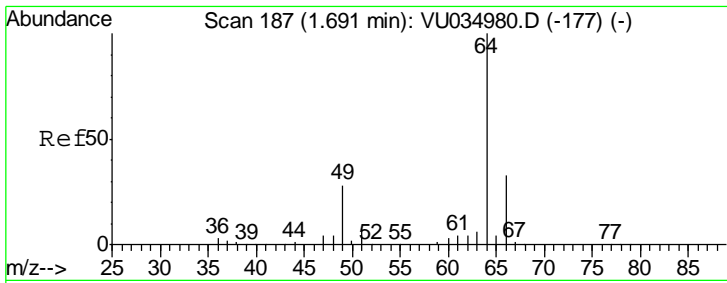
Manual Integrations
APPROVED
 MMDadoda
 10/9/2019 3:48:01 PM



#6
 Bromomethane
 Concen: 0.278 ug/L
 RT: 1.62 min Scan# 166
 Delta R.T. 0.00 min
 Lab File: VU034987.D
 Acq: 08 Oct 2019 12:40

Tgt Ion	Resp	Lower	Upper
94	100		
96	87.8	62.4	116.0





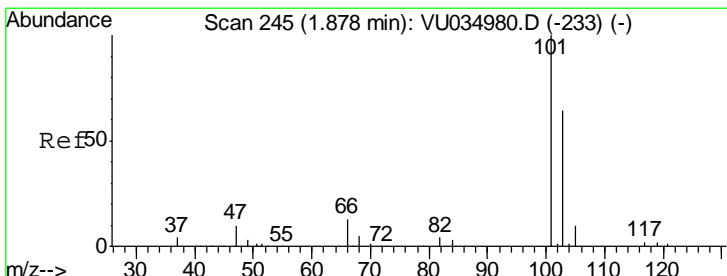
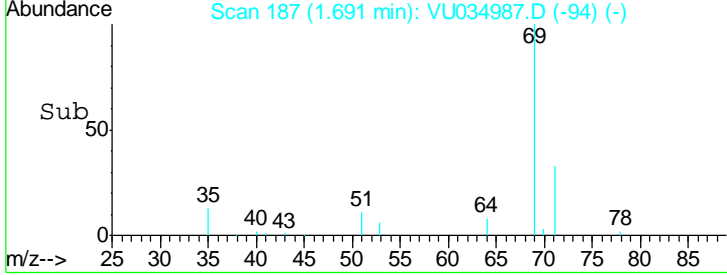
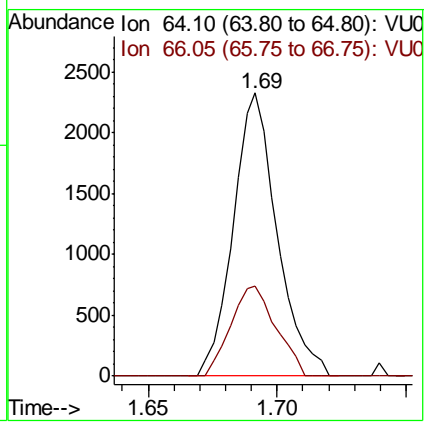
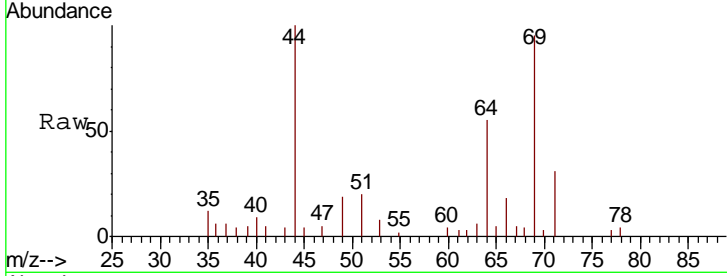
#8
 Chloroethane
 Concen: 0.265 ug/L
 RT: 1.69 min Scan# 187
 Delta R.T. 0.00 min
 Lab File: VU034987.D
 Acq: 08 Oct 2019 12:40

Instrument :
 MSVOA_U
 ClientSampled :
 MDL05

Tgt Ion: 64 Resp: 2748

Ion	Ratio	Lower	Upper
64	100		
66	32.0	23.2	43.2

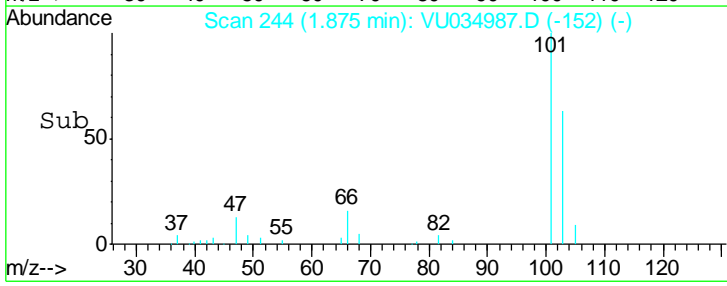
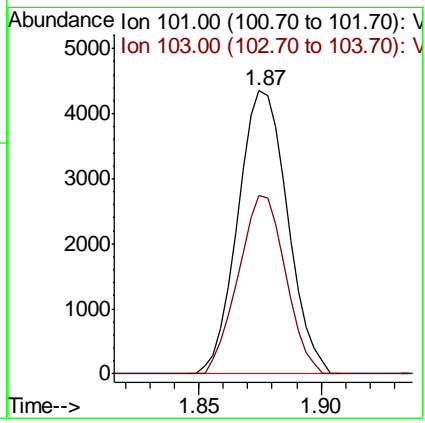
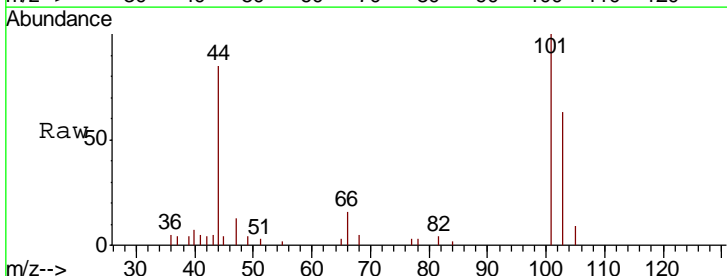
Manual Integrations
APPROVED
 MMDadoda
 10/9/2019 3:48:01 PM

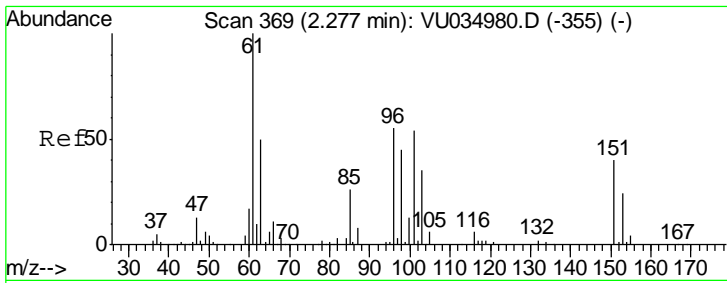


#9
 Trichlorofluoromethane
 Concen: 0.293 ug/L
 RT: 1.87 min Scan# 244
 Delta R.T. -0.00 min
 Lab File: VU034987.D
 Acq: 08 Oct 2019 12:40

Tgt Ion: 101 Resp: 6140

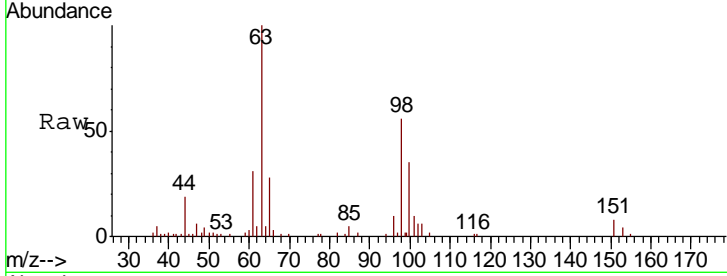
Ion	Ratio	Lower	Upper
101	100		
103	59.9	52.2	78.4





#10
 1,1,2-Trichloro-1,2,2-trifluoroethane
 Concen: 0.309 ug/L
 RT: 2.27 min Scan# 368
 Delta R.T. -0.00 min
 Lab File: VU034987.D
 Acq: 08 Oct 2019 12:40

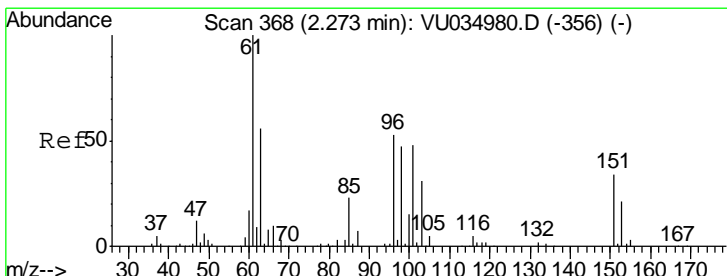
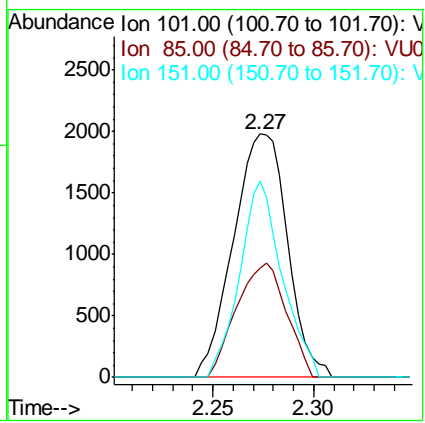
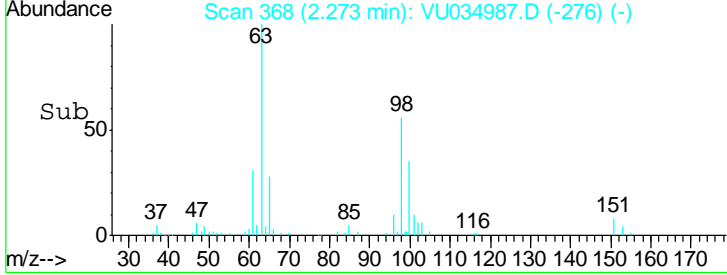
Instrument :
 MSVOA_U
 ClientSampled :
 MDL05



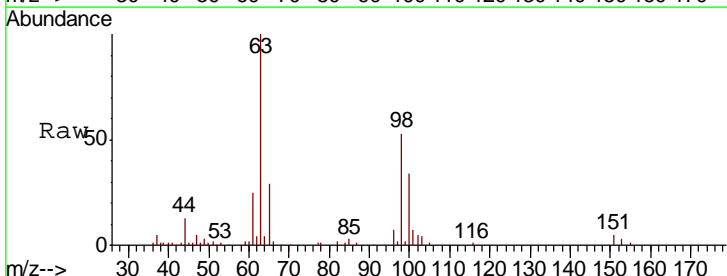
Tgt Ion: 101 Resp: 3718

Ion	Ratio	Lower	Upper
101	100		
85	43.0	37.4	56.0
151	63.4	58.6	87.8

Manual Integrations
APPROVED
 MMDadoda
 10/9/2019 3:48:01 PM

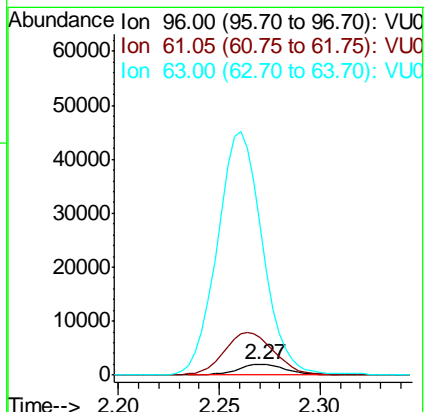
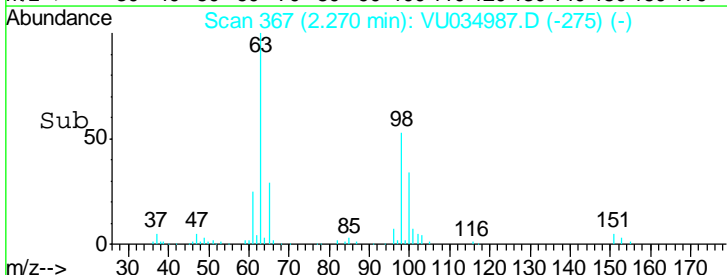


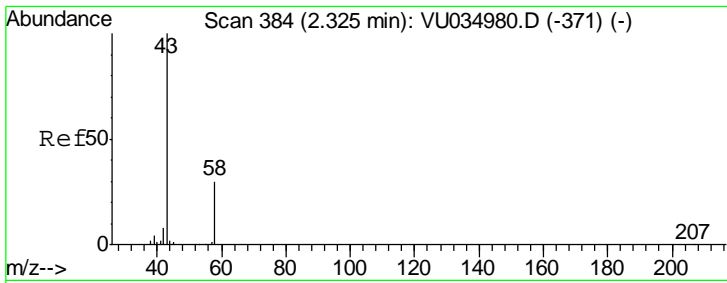
#12
 1,1-Dichloroethene
 Concen: 0.297 ug/L
 RT: 2.27 min Scan# 367
 Delta R.T. -0.00 min
 Lab File: VU034987.D
 Acq: 08 Oct 2019 12:40



Tgt Ion: 96 Resp: 3357

Ion	Ratio	Lower	Upper
96	100		
61	361.0	129.3	240.1#
63	1421.4	108.9	202.3#





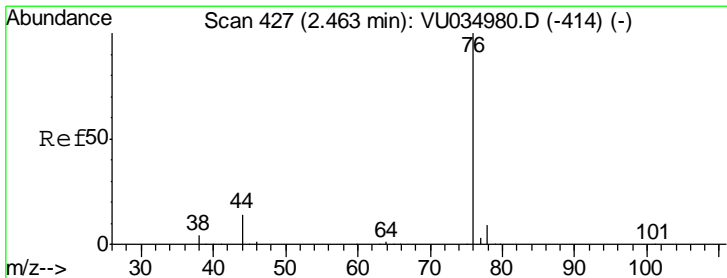
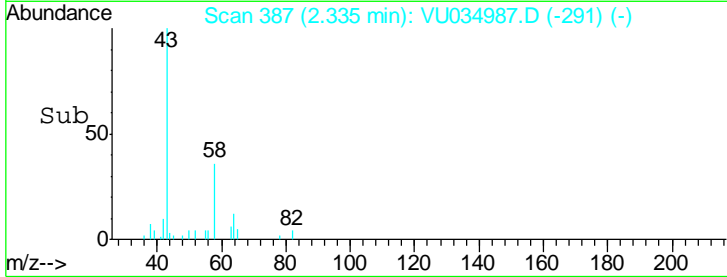
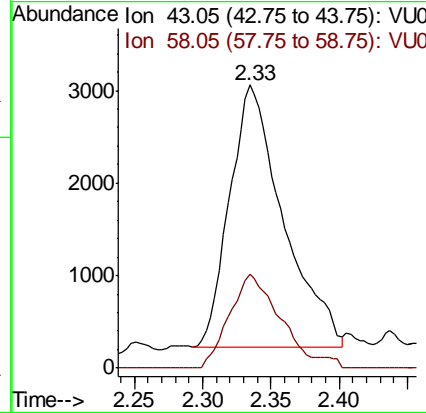
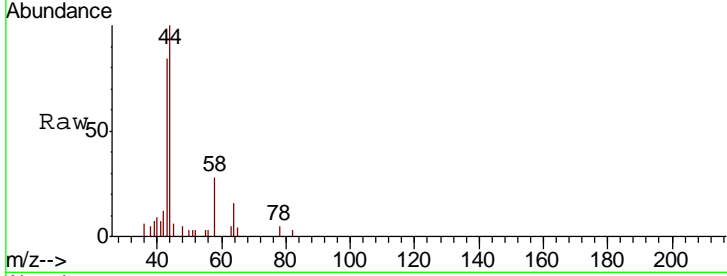
#13
 Acetone
 Concen: 3.074 ug/L
 RT: 2.33 min Scan# 387
 Delta R.T. 0.01 min
 Lab File: VU034987.D
 Acq: 08 Oct 2019 12:40

Instrument : MSVOA_U
 ClientSampled : MDL05

Tgt Ion	Ratio	Lower	Upper
43	100		
58	34.7	0.0	66.6

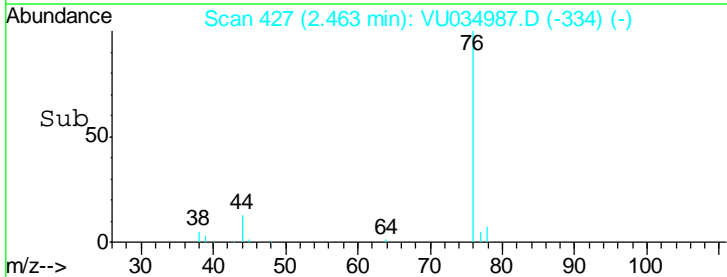
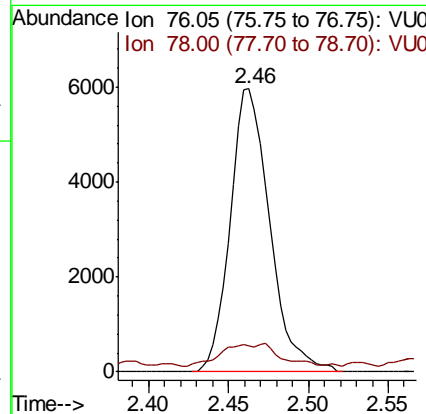
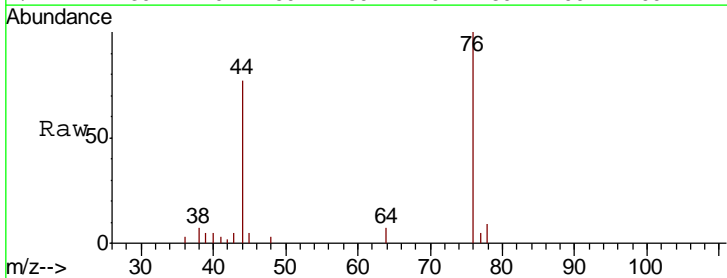
Manual Integrations
 APPROVED

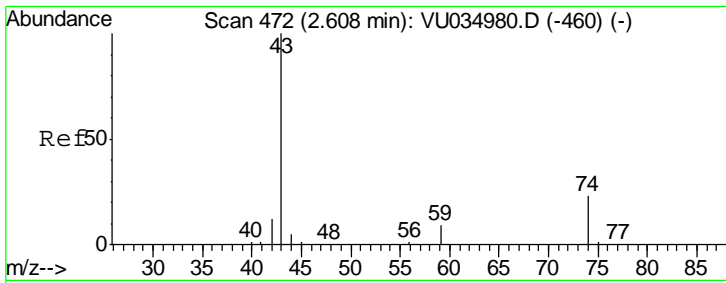
MMDadoda
 10/9/2019 3:48:01 PM



#14
 Carbon disulfide
 Concen: 0.268 ug/L
 RT: 2.46 min Scan# 427
 Delta R.T. 0.00 min
 Lab File: VU034987.D
 Acq: 08 Oct 2019 12:40

Tgt Ion	Ratio	Lower	Upper
76	100		
78	9.4	7.1	10.7





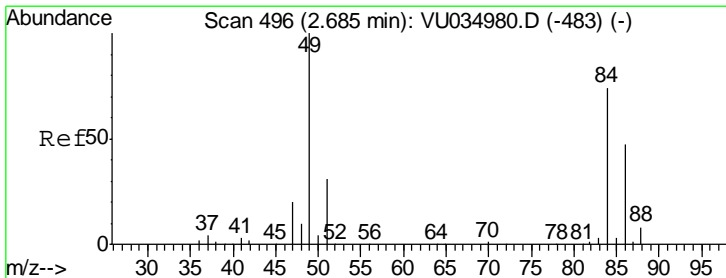
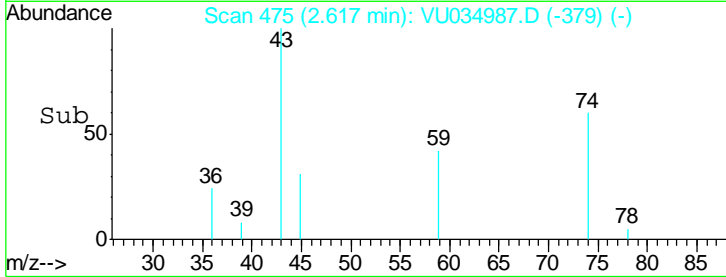
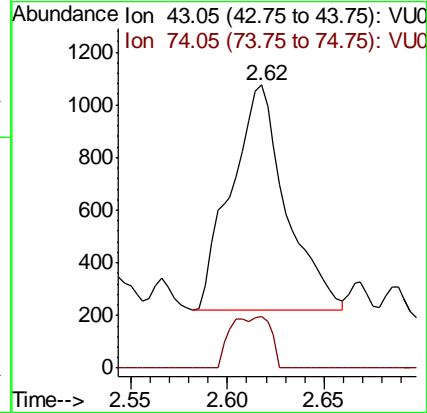
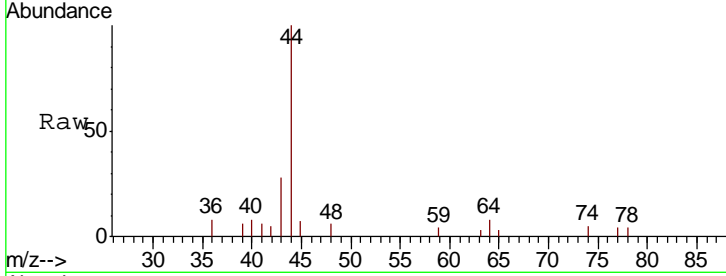
#15
Methyl Acetate
Concen: 0.254 ug/L
RT: 2.62 min Scan# 475
Delta R.T. 0.01 min
Lab File: VU034987.D
Acq: 08 Oct 2019 12:40

Instrument :
MSVOA_U
ClientSampled :
MDL05

Tgt Ion: 43 Resp: 1692
Ion Ratio Lower Upper
43 100
74 9.2 17.8 26.8#

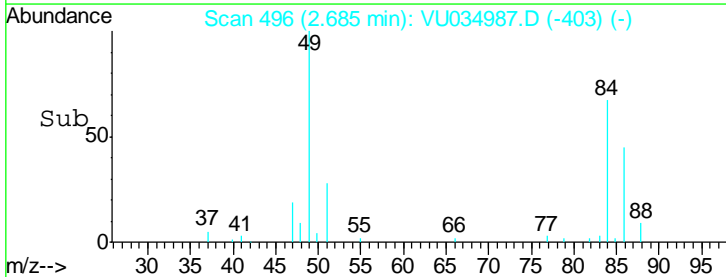
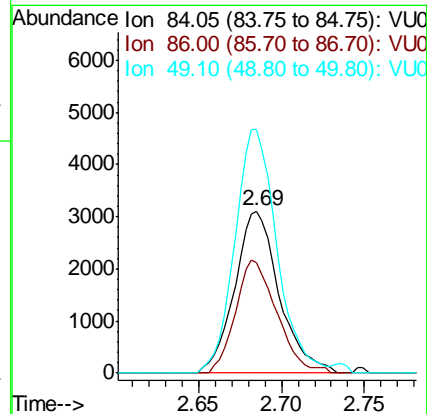
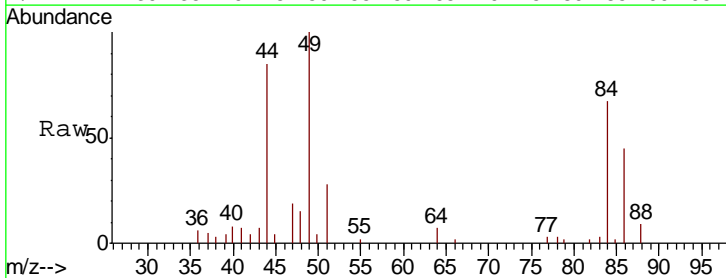
Manual Integrations
APPROVED

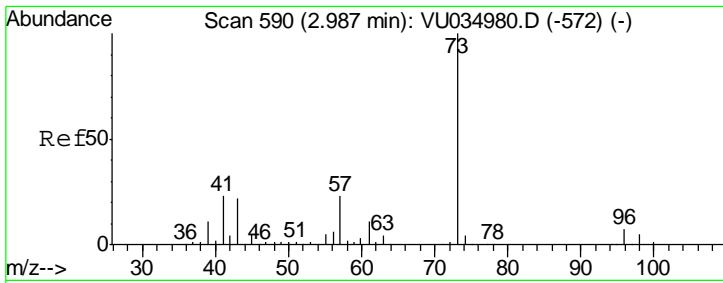
MMDadoda
10/9/2019 3:48:01 PM



#16
Methylene chloride
Concen: 0.415 ug/L
RT: 2.69 min Scan# 496
Delta R.T. 0.00 min
Lab File: VU034987.D
Acq: 08 Oct 2019 12:40

Tgt Ion: 84 Resp: 5797
Ion Ratio Lower Upper
84 100
86 68.0 42.5 78.9
49 150.2 86.9 161.3





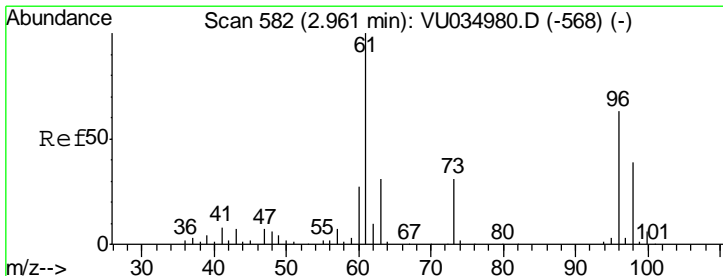
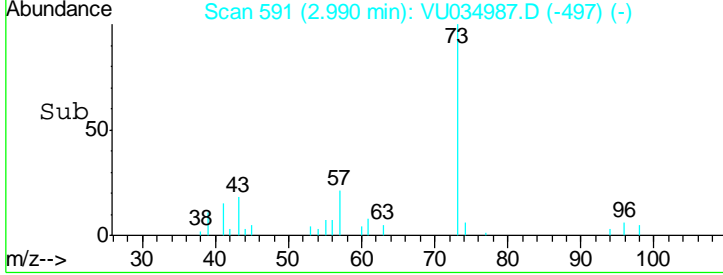
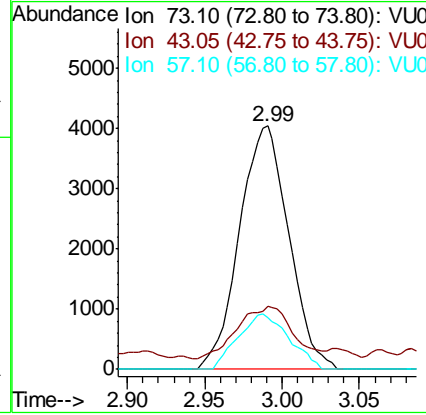
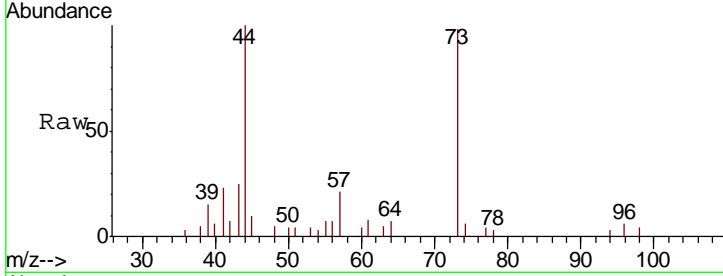
#17
 Methyl tert-butyl Ether
 Concen: 0.291 ug/L
 RT: 2.99 min Scan# 591
 Delta R.T. 0.00 min
 Lab File: VU034987.D
 Acq: 08 Oct 2019 12:40

Instrument :
 MSVOA_U
 ClientSampled :
 MDL05

Tgt Ion	Ratio	Lower	Upper
73	100		
43	24.2	16.3	24.5
57	23.5	18.6	28.0

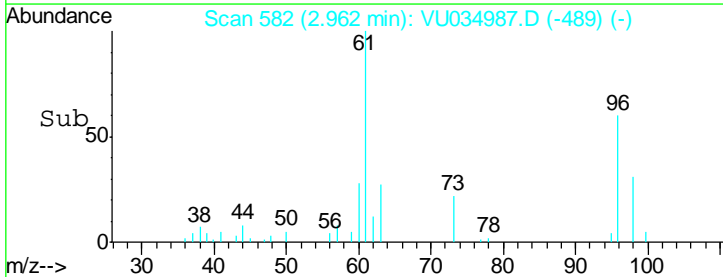
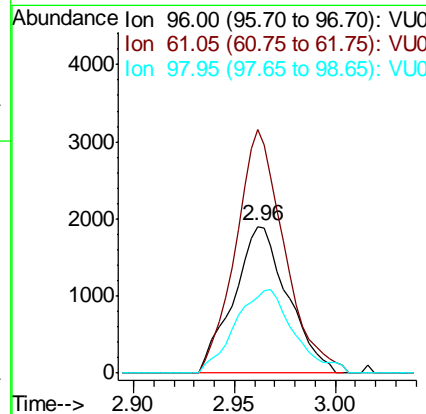
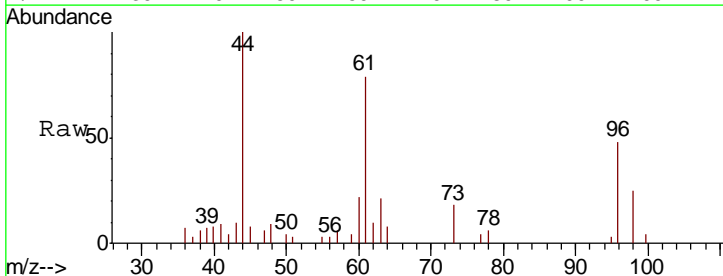
Manual Integrations
 APPROVED

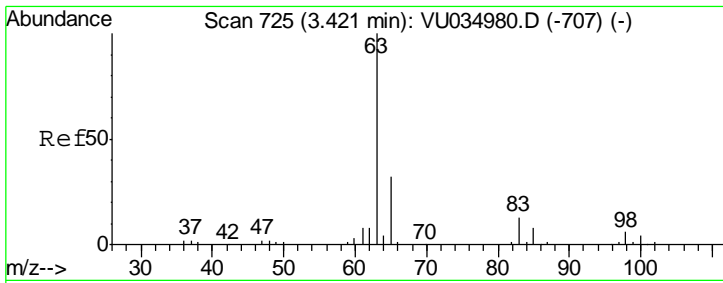
MMDadoda
 10/9/2019 3:48:01 PM



#18
 trans-1,2-Dichloroethene
 Concen: 0.292 ug/L
 RT: 2.96 min Scan# 582
 Delta R.T. 0.00 min
 Lab File: VU034987.D
 Acq: 08 Oct 2019 12:40

Tgt Ion	Ratio	Lower	Upper
96	100		
61	166.0	107.1	198.9
98	51.8	45.4	84.4





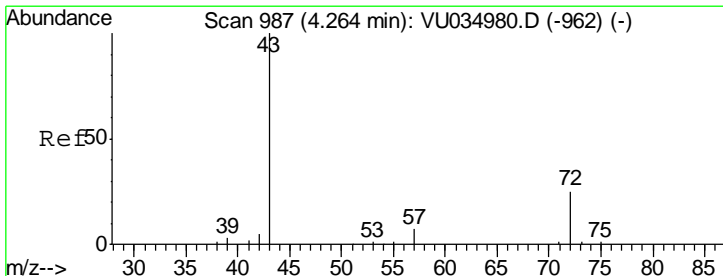
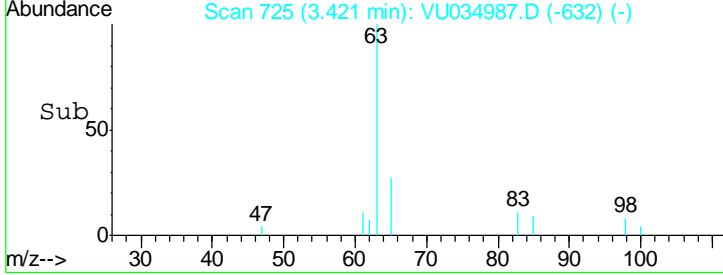
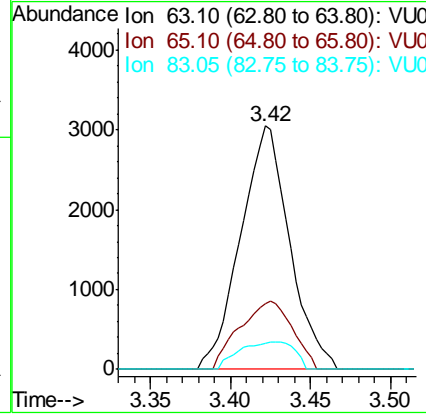
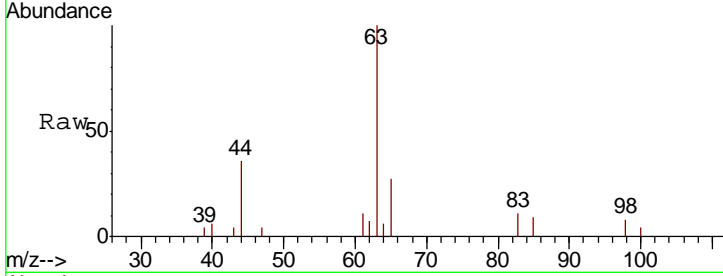
#19
 1,1-Dichloroethane
 Concen: 0.266 ug/L
 RT: 3.42 min Scan# 725
 Delta R.T. 0.00 min
 Lab File: VU034987.D
 Acq: 08 Oct 2019 12:40

Instrument : MSVOA_U
 ClientSampled : MDL05

Tgt Ion	Resp	Lower	Upper
63	100		
65	27.2	21.7	40.3
83	10.8	9.0	16.8

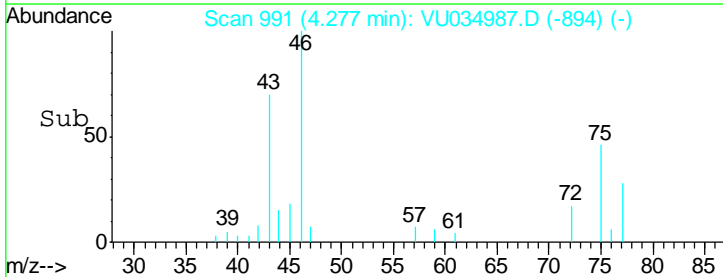
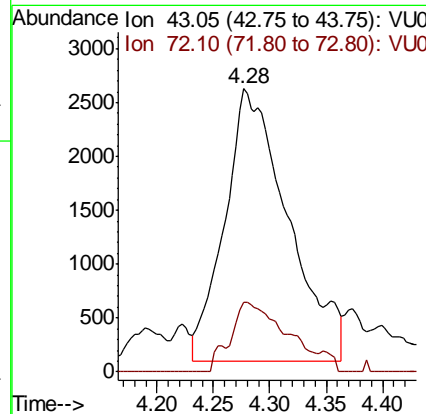
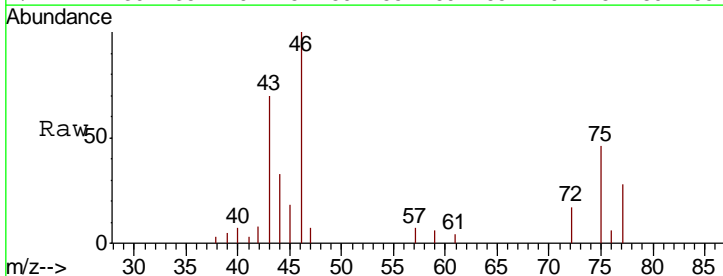
Manual Integrations
 APPROVED

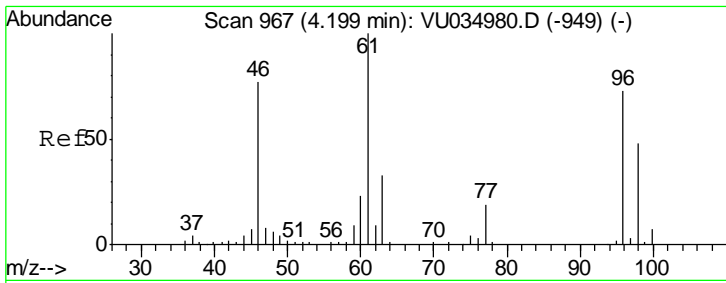
MMDadoda
 10/9/2019 3:48:01 PM



#21
 2-Butanone
 Concen: 2.763 ug/L m
 RT: 4.28 min Scan# 991
 Delta R.T. 0.01 min
 Lab File: VU034987.D
 Acq: 08 Oct 2019 12:40

Tgt Ion	Resp	Lower	Upper
43	100		
72	22.1	13.5	40.4



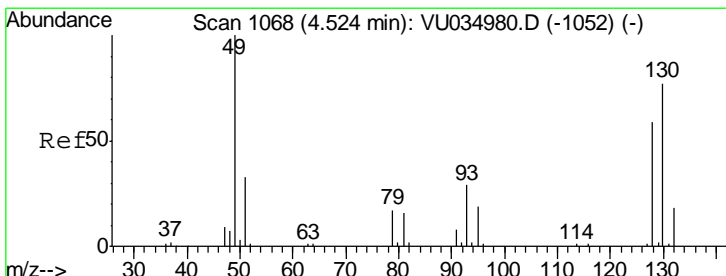
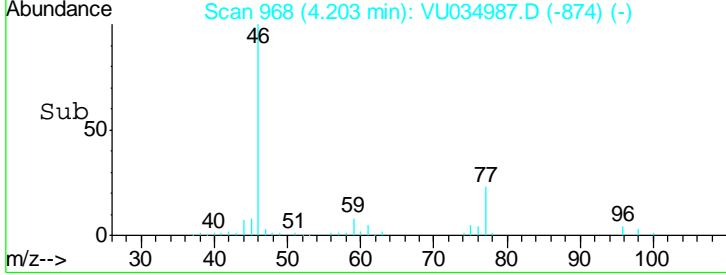
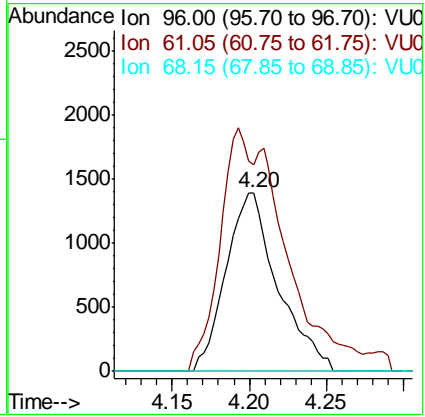
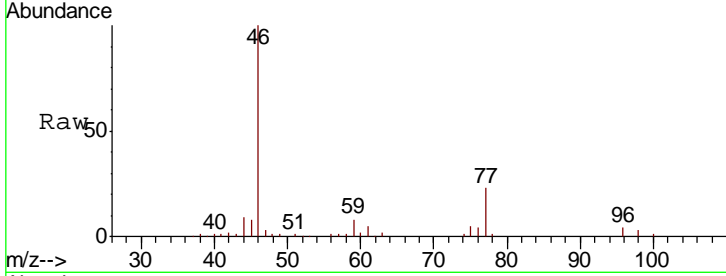


#22
 cis-1,2-Dichloroethene
 Concen: 0.241 ug/L
 RT: 4.20 min Scan# 968
 Delta R.T. 0.00 min
 Lab File: VU034987.D
 Acq: 08 Oct 2019 12:40

Instrument : MSVOA_U
 ClientSampled : MDL05

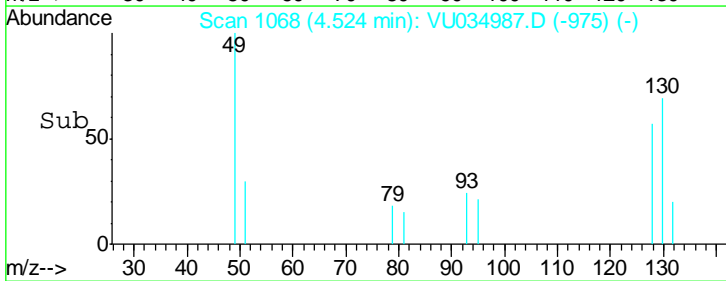
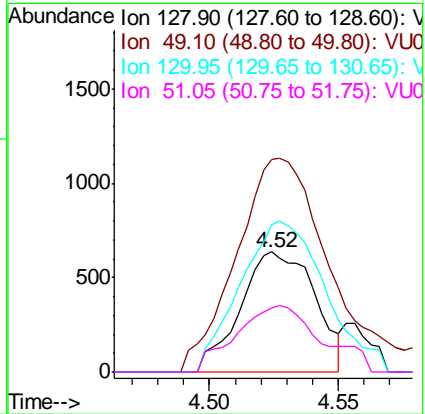
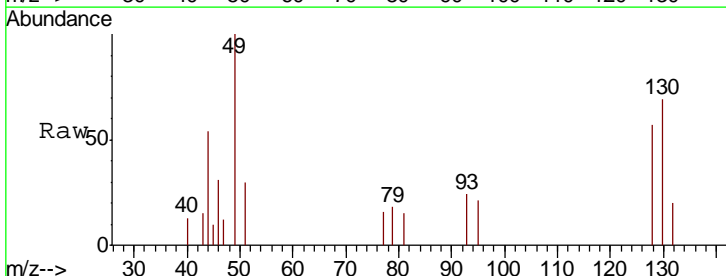
Tgt Ion	Resp	Lower	Upper
96	3245		
96	100		
61	116.2	89.2	165.6
68	0.0	0.0	0.0

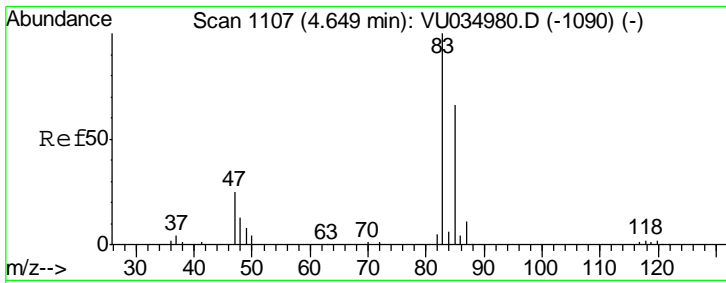
Manual Integrations
APPROVED
 MMDadoda
 10/9/2019 3:48:01 PM



#23
 Bromochloromethane
 Concen: 0.227 ug/L
 RT: 4.52 min Scan# 1068
 Delta R.T. 0.00 min
 Lab File: VU034987.D
 Acq: 08 Oct 2019 12:40

Tgt Ion	Resp	Lower	Upper
128	1283		
128	100		
49	176.7	110.5	205.3
130	122.8	88.6	164.6
51	53.8	43.2	64.8





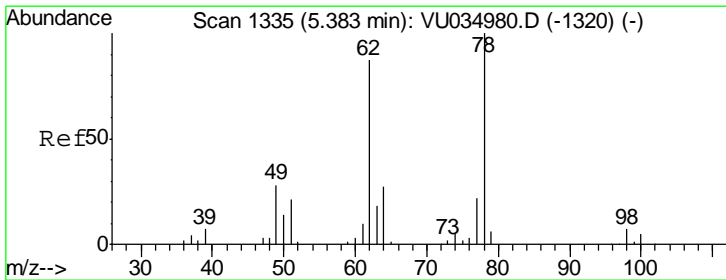
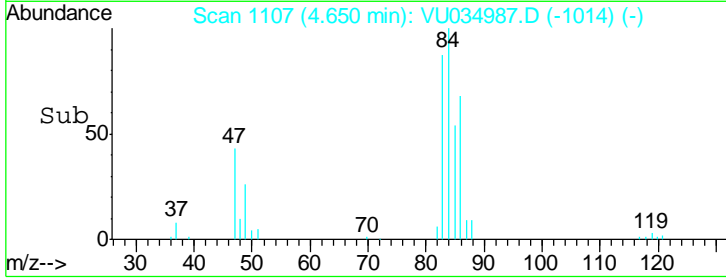
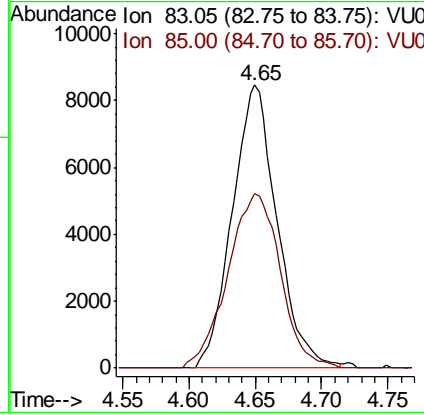
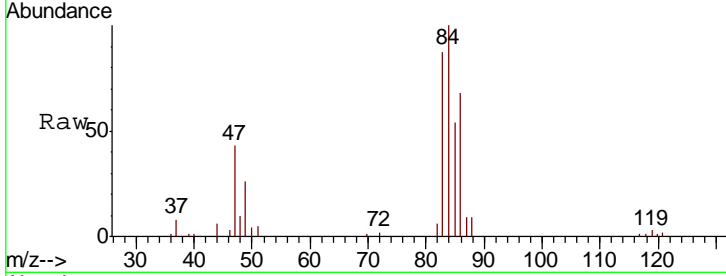
#25
 Chloroform
 Concen: 0.737 ug/L
 RT: 4.65 min Scan# 1107
 Delta R.T. 0.00 min
 Lab File: VU034987.D
 Acq: 08 Oct 2019 12:40

Instrument :
 MSVOA_U
ClientSampled :
 MDL05

Tgt Ion	Resp	Lower	Upper
83	19891		
83	100		
85	61.5	45.4	84.4

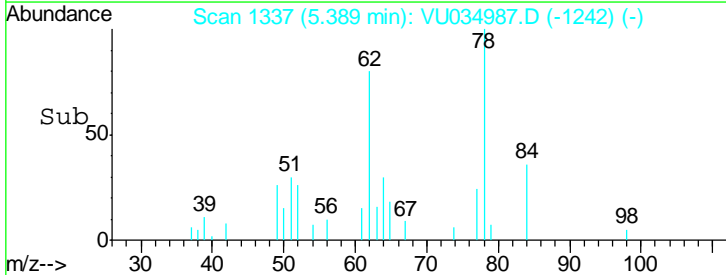
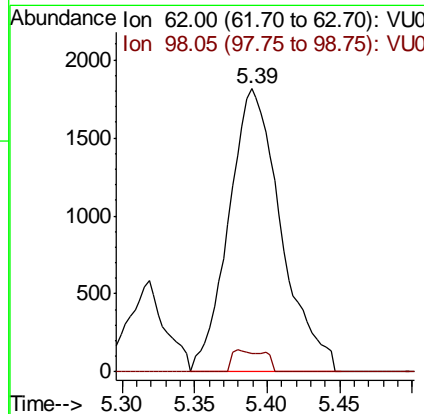
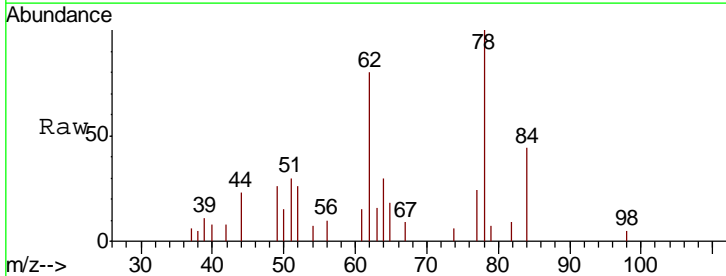
Manual Integrations
APPROVED

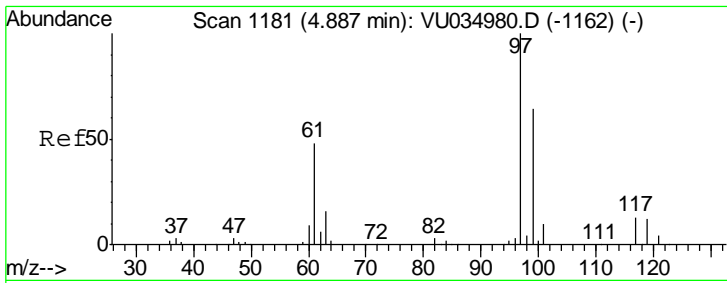
MMDadoda
 10/9/2019 3:48:01 PM



#27
 1,2-Dichloroethane
 Concen: 0.289 ug/L
 RT: 5.39 min Scan# 1337
 Delta R.T. 0.01 min
 Lab File: VU034987.D
 Acq: 08 Oct 2019 12:40

Tgt Ion	Resp	Lower	Upper
62	4554		
62	100		
98	6.7	6.6	10.0





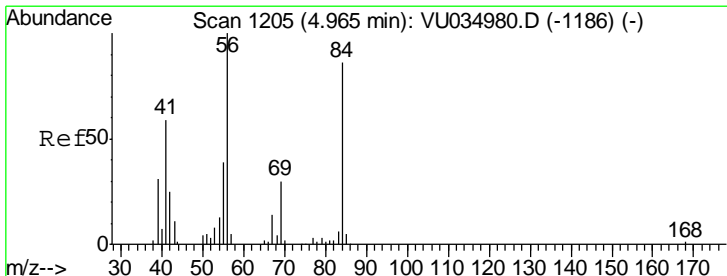
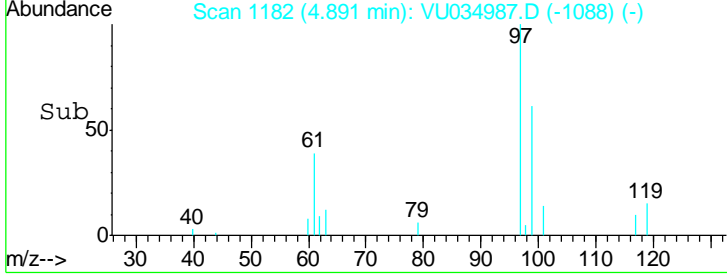
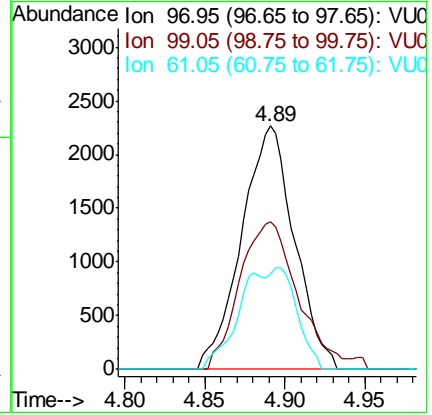
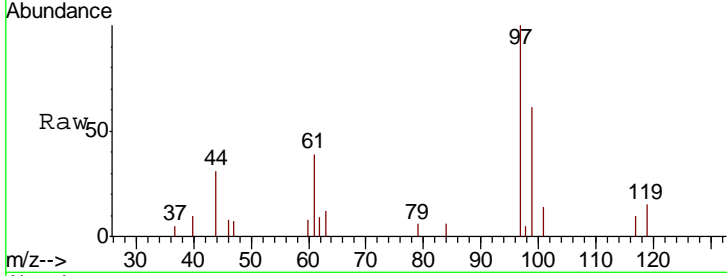
#29
 1,1,1-Trichloroethane
 Concen: 0.260 ug/L
 RT: 4.89 min Scan# 1182
 Delta R.T. 0.00 min
 Lab File: VU034987.D
 Acq: 08 Oct 2019 12:40

Instrument : MSVOA_U
 ClientSampled : MDL05

Tgt Ion	Resp	Lower	Upper
97	100		
99	66.6	51.6	77.4
61	22.6	36.2	54.4#

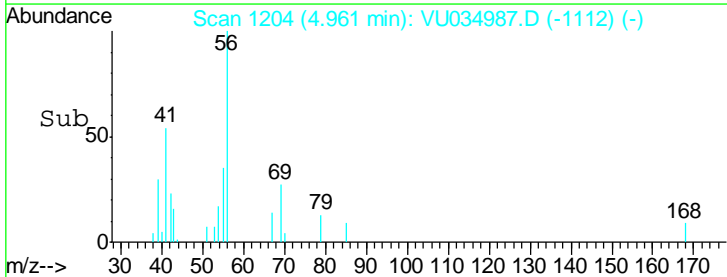
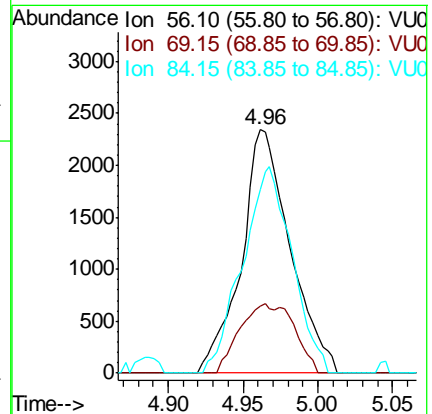
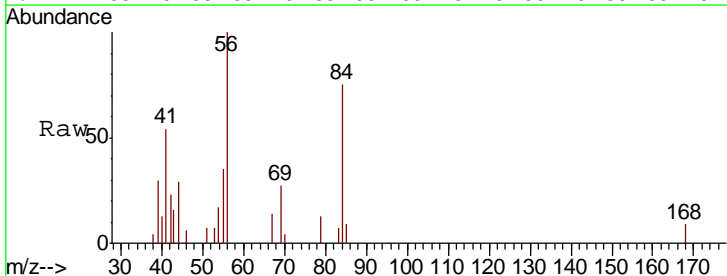
Manual Integrations
 APPROVED

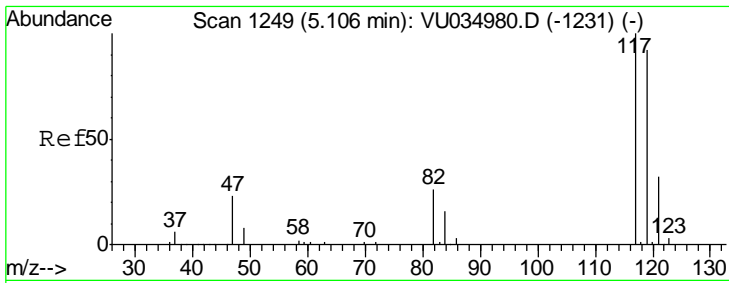
MMDadoda
 10/9/2019 3:48:01 PM



#30
 Cyclohexane
 Concen: 0.245 ug/L
 RT: 4.96 min Scan# 1204
 Delta R.T. -0.00 min
 Lab File: VU034987.D
 Acq: 08 Oct 2019 12:40

Tgt Ion	Resp	Lower	Upper
56	100		
69	31.8	23.9	35.9
84	86.1	69.5	104.3



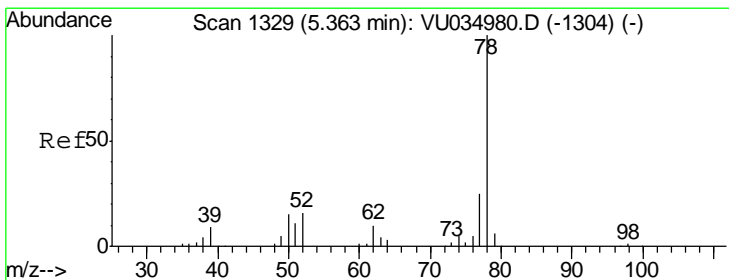
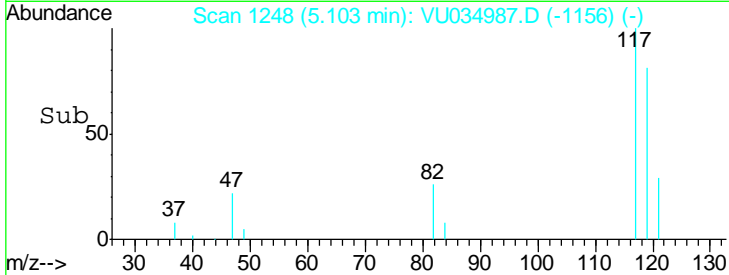
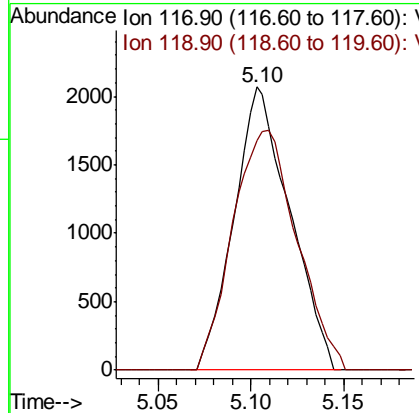
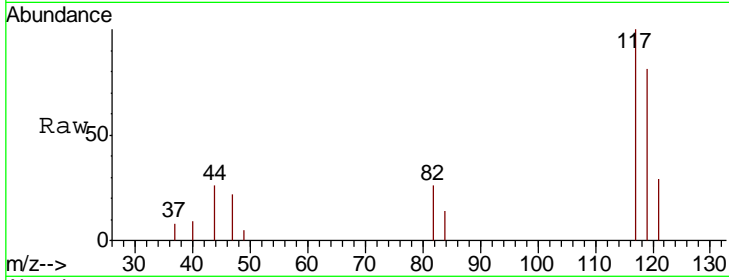


#31
 Carbon tetrachloride
 Concen: 0.252 ug/L
 RT: 5.10 min Scan# 1248
 Delta R.T. -0.00 min
 Lab File: VU034987.D
 Acq: 08 Oct 2019 12:40

Instrument : MSVOA_U
 ClientSampled : MDL05

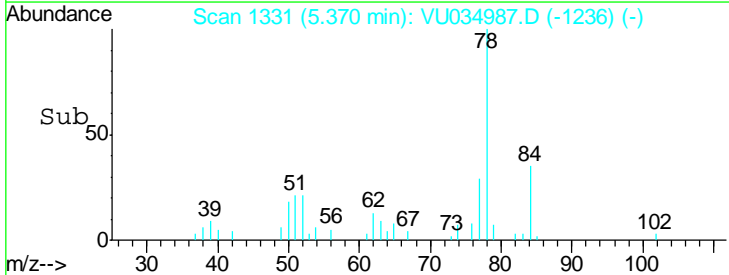
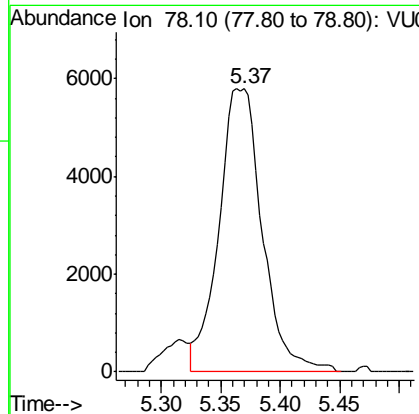
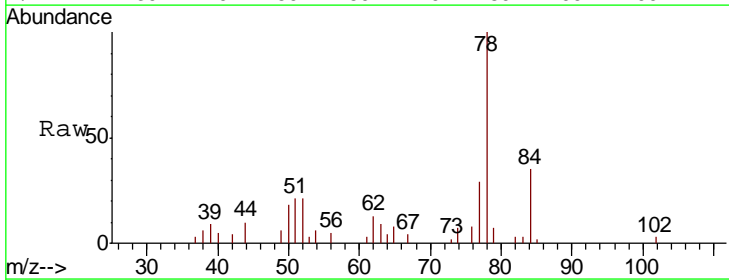
Tgt Ion: 117 Resp: 4322
 Ion Ratio Lower Upper
 117 100
 119 97.4 77.5 116.3

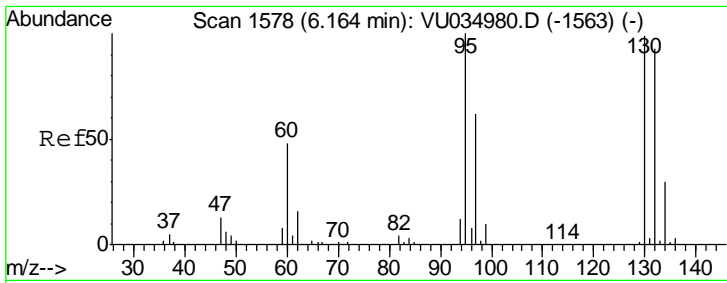
Manual Integrations
APPROVED
 MMDadoda
 10/9/2019 3:48:01 PM



#33
 Benzene
 Concen: 0.276 ug/L
 RT: 5.37 min Scan# 1331
 Delta R.T. 0.01 min
 Lab File: VU034987.D
 Acq: 08 Oct 2019 12:40

Tgt Ion: 78 Resp: 14658





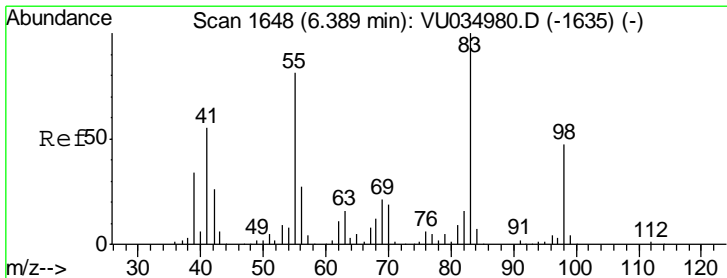
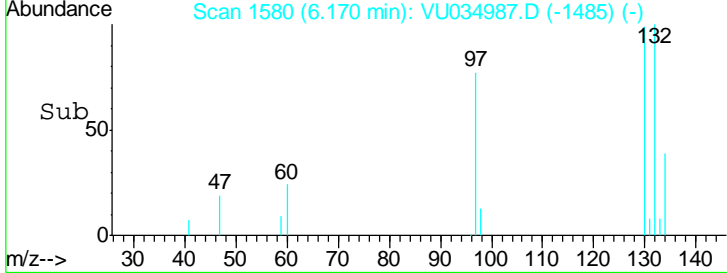
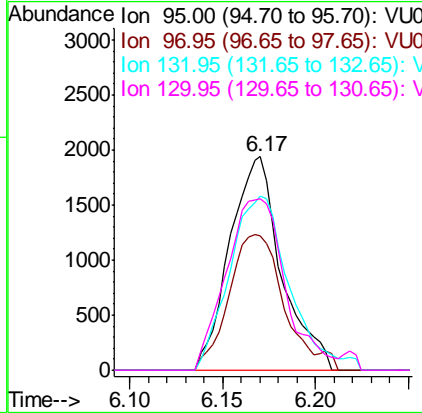
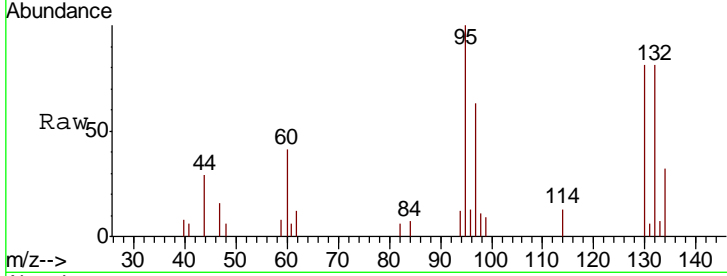
#34
 Trichloroethene
 Concen: 0.275 ug/L
 RT: 6.17 min Scan# 1580
 Delta R.T. 0.01 min
 Lab File: VU034987.D
 Acq: 08 Oct 2019 12:40

Instrument : MSVOA_U
 ClientSampled : VU034987.D
 MDL05

Tgt Ion	Resp	Lower	Upper
95	3762		
95	100		
97	62.9	44.5	82.7
132	81.4	66.6	123.8
130	80.5	68.9	127.9

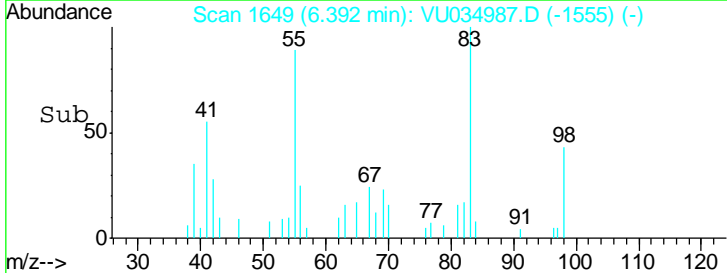
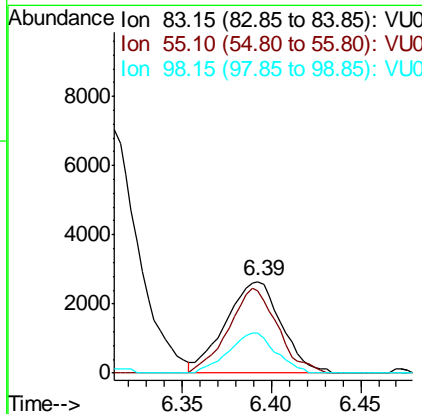
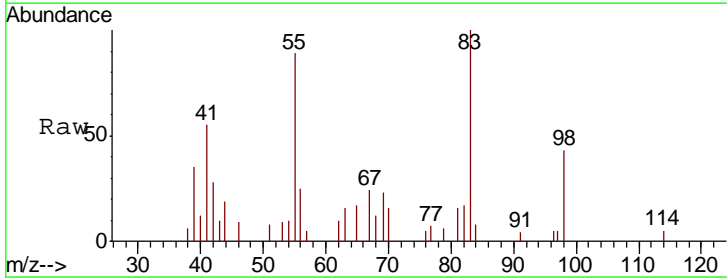
Manual Integrations
 APPROVED

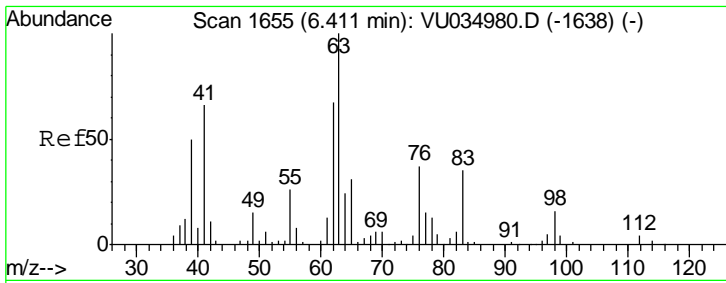
MMDadoda
 10/9/2019 3:48:01 PM



#35
 Methylcyclohexane
 Concen: 0.260 ug/L
 RT: 6.39 min Scan# 1649
 Delta R.T. 0.00 min
 Lab File: VU034987.D
 Acq: 08 Oct 2019 12:40

Tgt Ion	Resp	Lower	Upper
83	5766		
83	100		
55	80.8	62.6	94.0
98	37.1	36.2	54.2





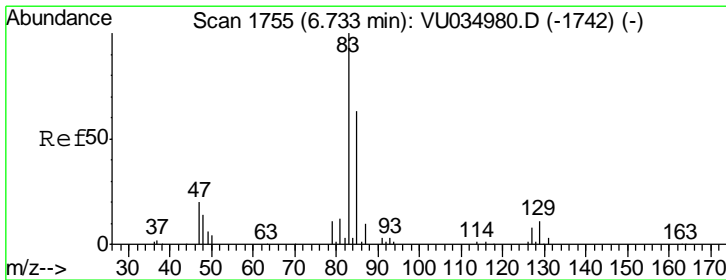
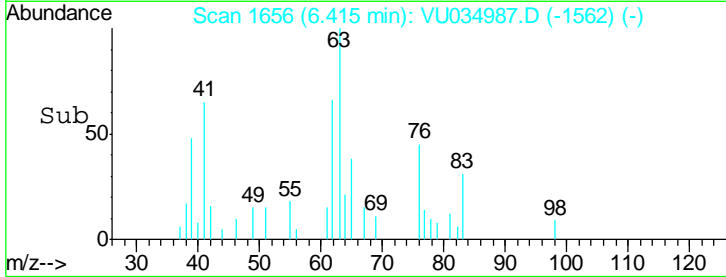
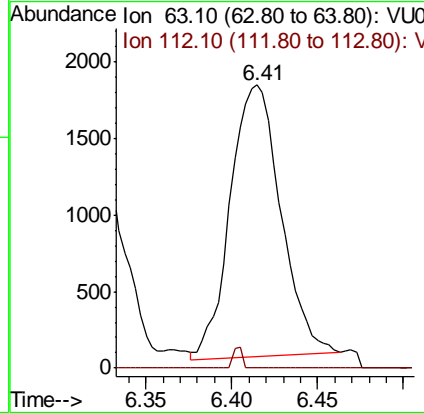
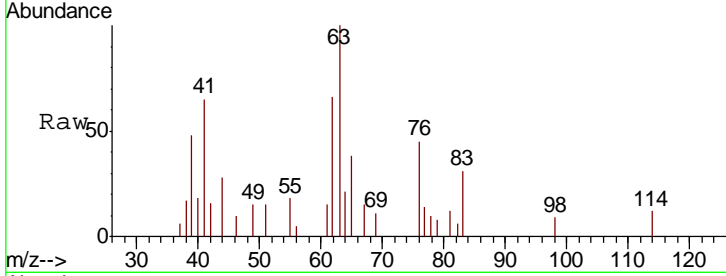
#37
 1,2-Dichloropropane
 Concen: 0.253 ug/L
 RT: 6.41 min Scan# 1656
 Delta R.T. 0.00 min
 Lab File: VU034987.D
 Acq: 08 Oct 2019 12:40

Instrument : MSVOA_U
 ClientSampled : MDL05

Tgt Ion	Resp	Lower	Upper
63	100		
112	1.4	3.1	4.7#

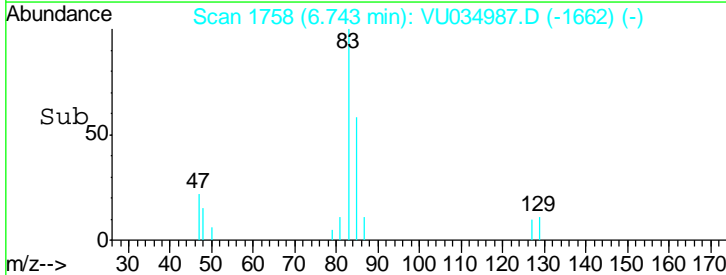
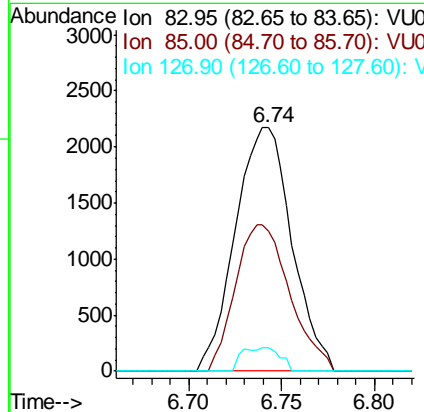
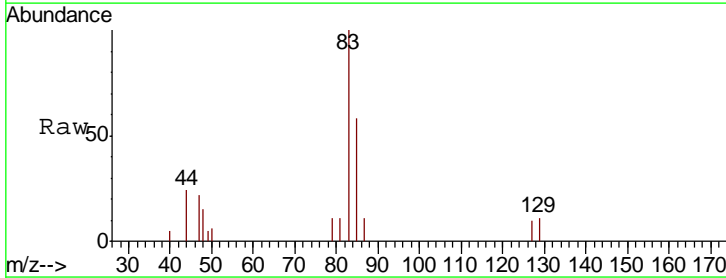
Manual Integrations
 APPROVED

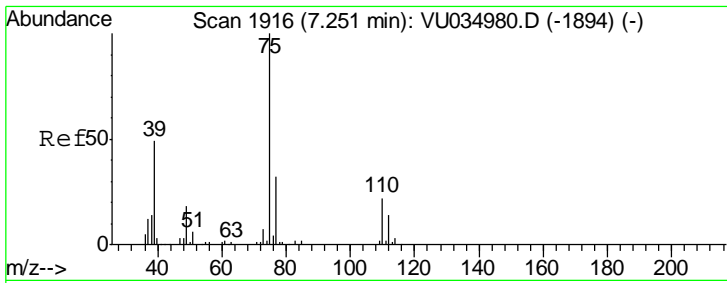
MMDadoda
 10/9/2019 3:48:01 PM



#38
 Bromodichloromethane
 Concen: 0.275 ug/L
 RT: 6.74 min Scan# 1758
 Delta R.T. 0.01 min
 Lab File: VU034987.D
 Acq: 08 Oct 2019 12:40

Tgt Ion	Resp	Lower	Upper
83	100		
85	57.6	44.0	81.8
127	9.5	7.0	10.4





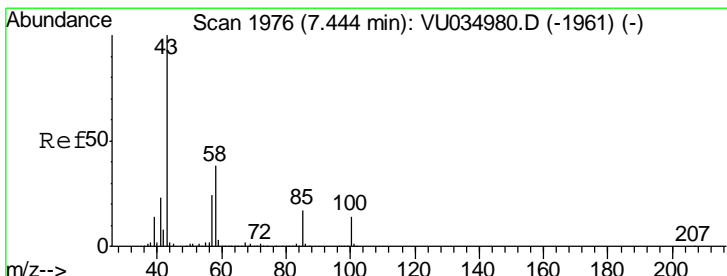
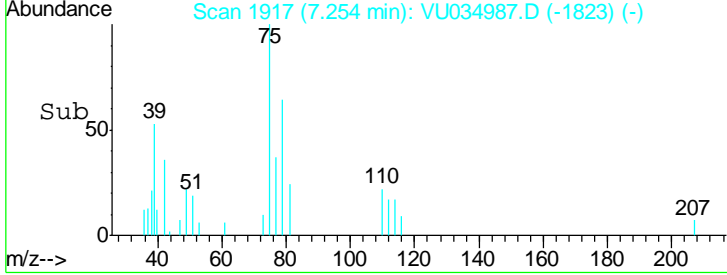
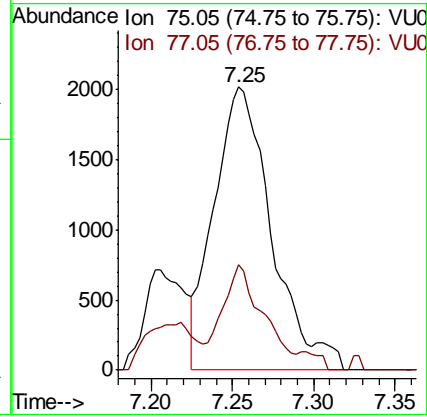
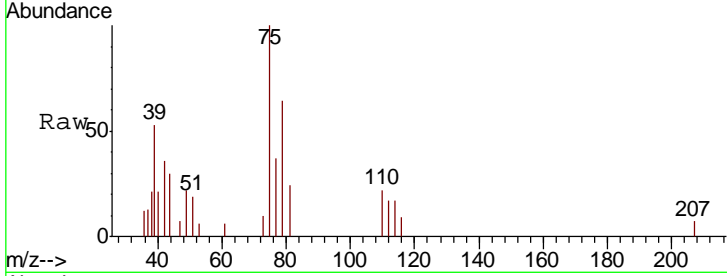
#39
 cis-1,3-Dichloropropene
 Concen: 0.256 ug/L m
 RT: 7.25 min Scan# 1917
 Delta R.T. 0.00 min
 Lab File: VU034987.D
 Acq: 08 Oct 2019 12:40

Instrument :
 MSVOA_U
ClientSampled :
 MDL05

Tgt Ion: 75 Resp: 4963

Ion	Ratio	Lower	Upper
75	100		
77	37.1	22.1	41.1

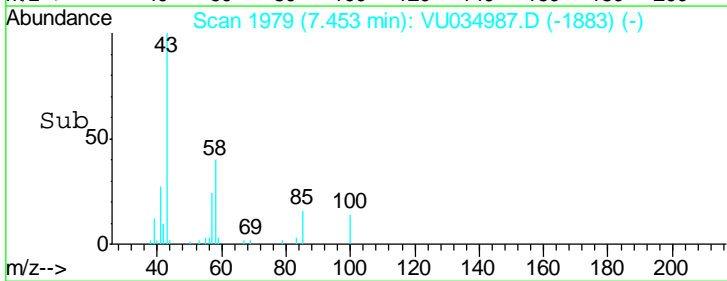
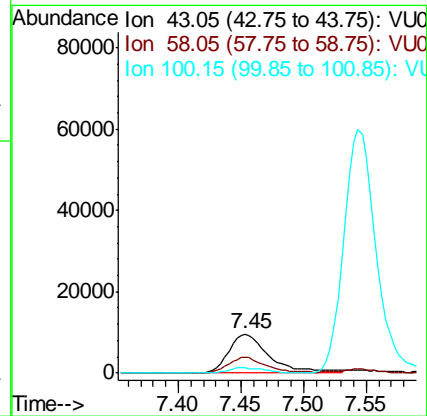
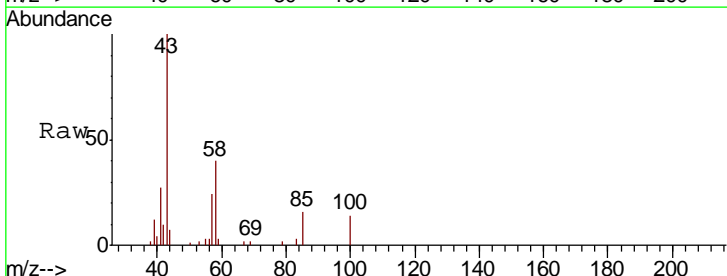
Manual Integrations
APPROVED
 MMDadoda
 10/9/2019 3:48:01 PM

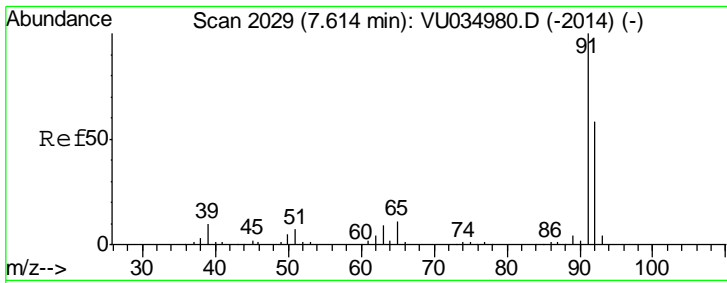


#40
 4-Methyl-2-pentanone
 Concen: 2.390 ug/L
 RT: 7.45 min Scan# 1979
 Delta R.T. 0.01 min
 Lab File: VU034987.D
 Acq: 08 Oct 2019 12:40

Tgt Ion: 43 Resp: 21513

Ion	Ratio	Lower	Upper
43	100		
58	35.4	32.4	48.6
100	0.0	11.9	17.9#





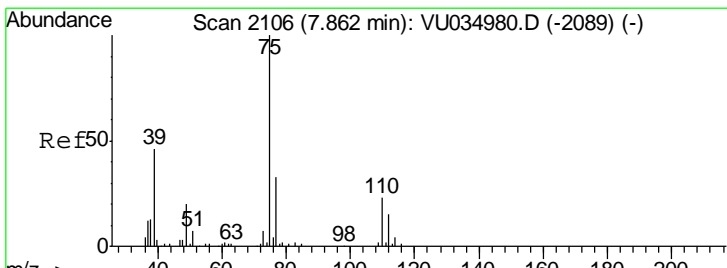
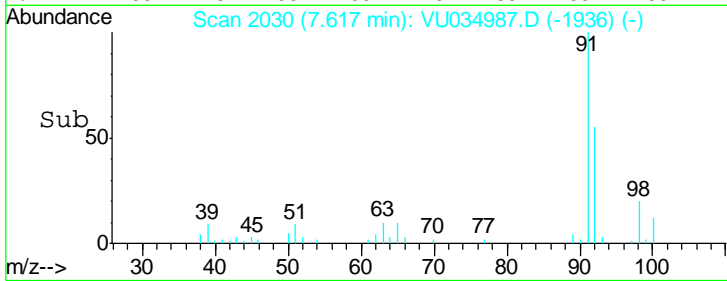
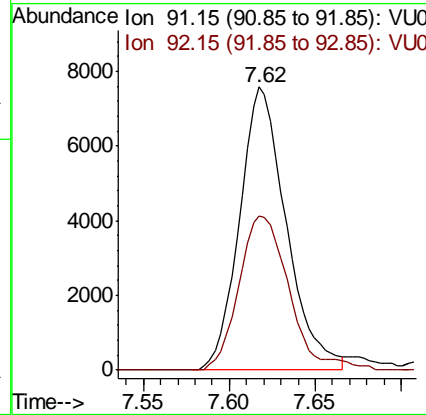
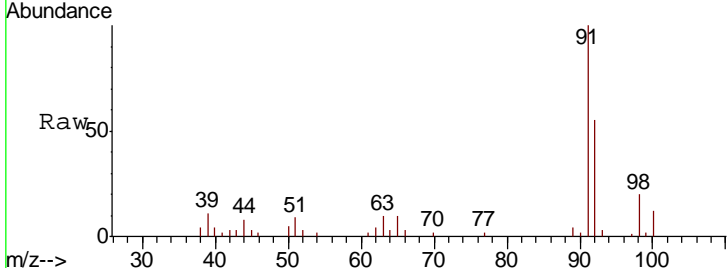
#42
 Toluene
 Concen: 0.259 ug/L
 RT: 7.62 min Scan# 2030
 Delta R.T. 0.00 min
 Lab File: VU034987.D
 Acq: 08 Oct 2019 12:40

Instrument : MSVOA_U
 ClientSampled : MDL05

Tgt Ion: 91 Resp: 14319

Ion	Ratio	Lower	Upper
91	100		
92	54.5	40.0	74.2

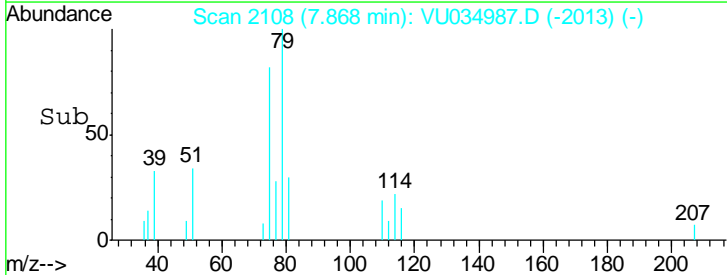
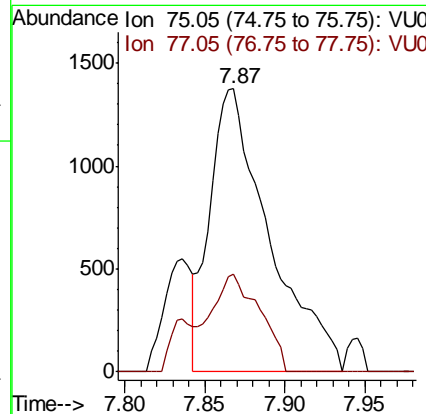
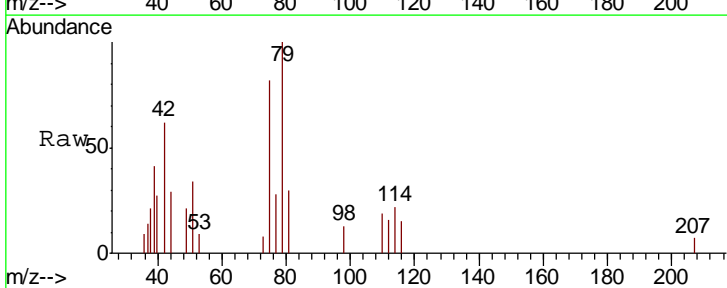
Manual Integrations APPROVED
 MMDadoda
 10/9/2019 3:48:01 PM

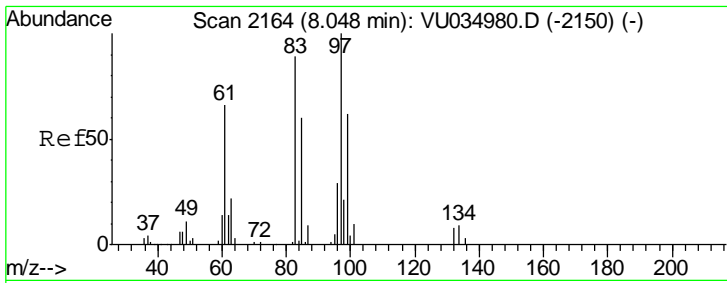


#44
 trans-1,3-Dichloropropene
 Concen: 0.235 ug/L
 RT: 7.87 min Scan# 2108
 Delta R.T. 0.01 min
 Lab File: VU034987.D
 Acq: 08 Oct 2019 12:40

Tgt Ion: 75 Resp: 3526

Ion	Ratio	Lower	Upper
75	100		
77	34.6	21.6	40.0





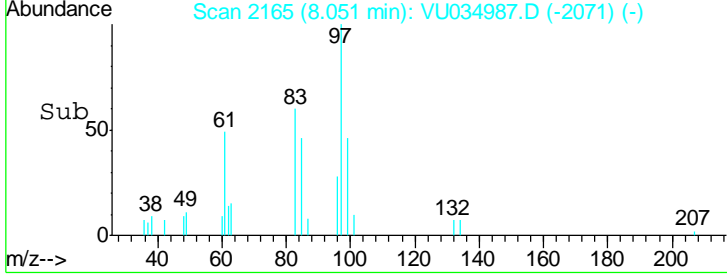
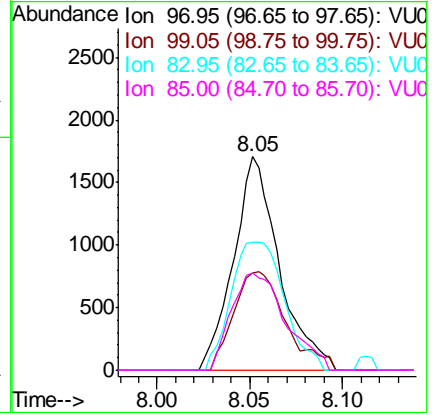
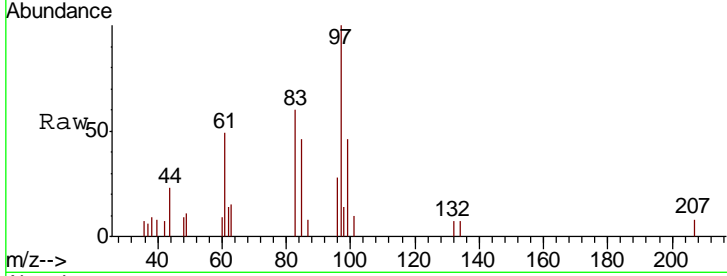
#45
 1,1,2-Trichloroethane
 Concen: 0.308 ug/L
 RT: 8.05 min Scan# 2165
 Delta R.T. 0.00 min
 Lab File: VU034987.D
 Acq: 08 Oct 2019 12:40

Instrument : MSVOA_U
 ClientSampled : VU034987.D
 MDL05

Tgt Ion	Resp	Lower	Upper
97	100		
99	45.8	42.3	78.5
83	60.0	58.0	107.6
85	45.5	37.8	70.2

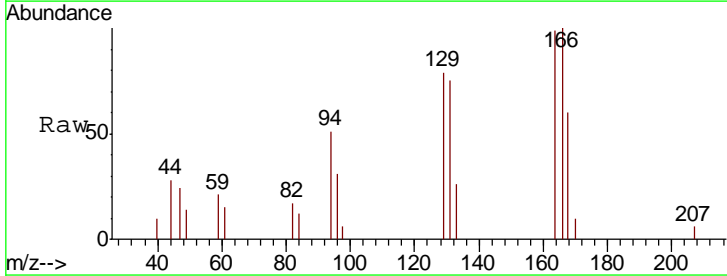
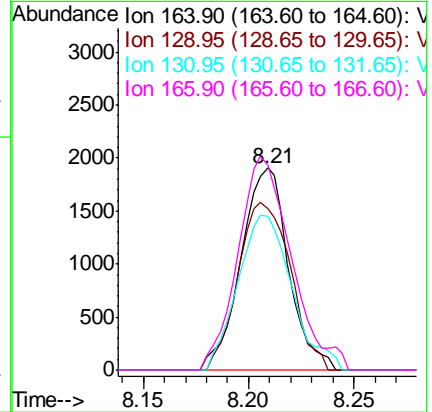
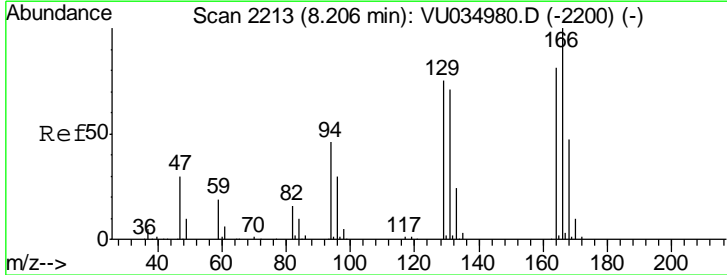
Manual Integrations
 APPROVED

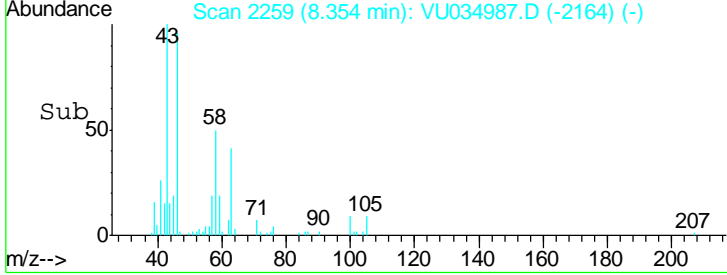
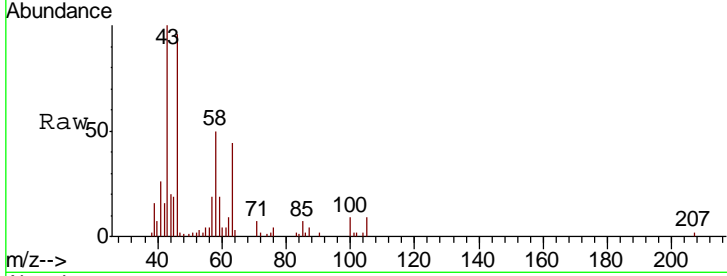
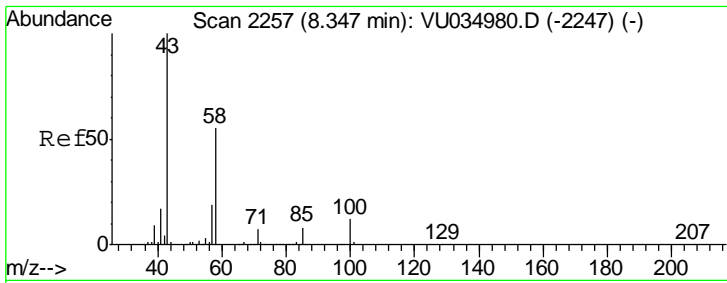
MMDadoda
 10/9/2019 3:48:01 PM



#47
 Tetrachloroethene
 Concen: 0.271 ug/L
 RT: 8.21 min Scan# 2214
 Delta R.T. 0.00 min
 Lab File: VU034987.D
 Acq: 08 Oct 2019 12:40

Tgt Ion	Resp	Lower	Upper
164	100		
129	80.0	68.5	127.1
131	76.1	67.3	124.9
166	101.3	93.1	172.9



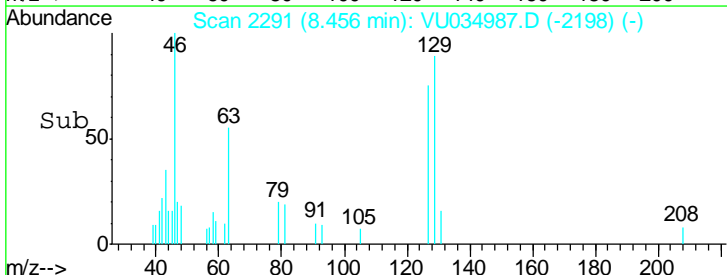
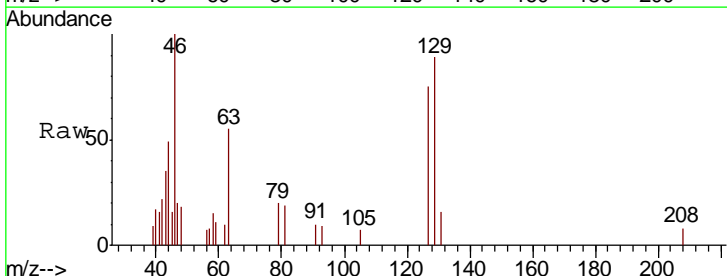
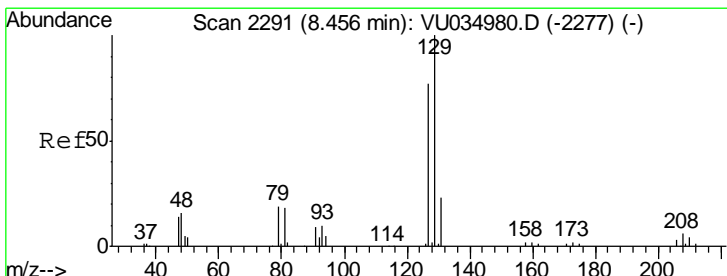
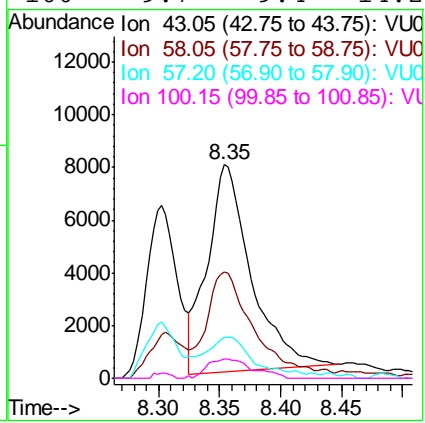


#48
 2-Hexanone
 Concen: 3.199 ug/L
 RT: 8.35 min Scan# 2259
 Delta R.T. 0.01 min
 Lab File: VU034987.D
 Acq: 08 Oct 2019 12:40

Tgt Ion	Resp	Lower	Upper
43	19741		
43	100		
58	49.4	44.1	66.1
57	17.9	15.8	23.8
100	9.7	9.4	14.2

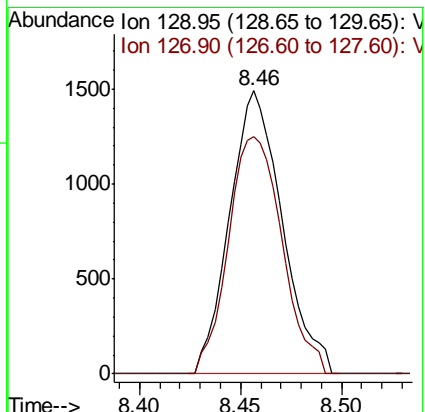
Instrument : MSVOA_U
 ClientSampled : MDL05

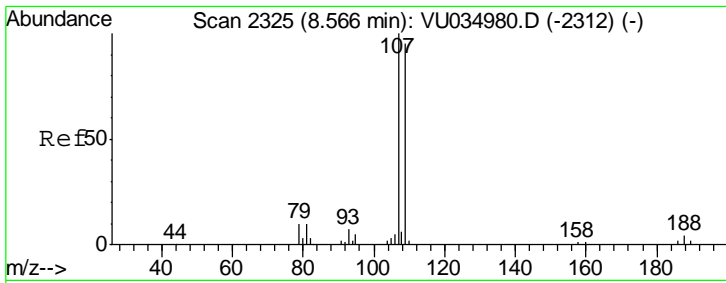
Manual Integrations
APPROVED
 MMDadoda
 10/9/2019 3:48:01 PM



#49
 Dibromochloromethane
 Concen: 0.247 ug/L
 RT: 8.46 min Scan# 2291
 Delta R.T. 0.00 min
 Lab File: VU034987.D
 Acq: 08 Oct 2019 12:40

Tgt Ion	Resp	Lower	Upper
129	2712		
129	100		
127	83.7	51.9	96.5





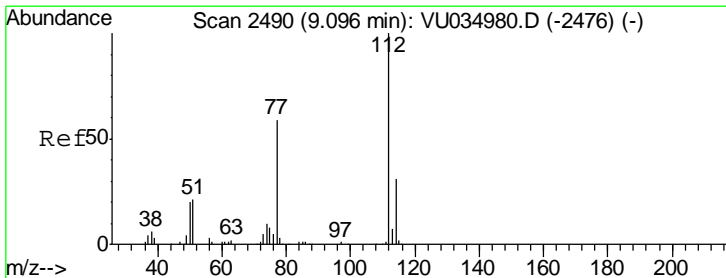
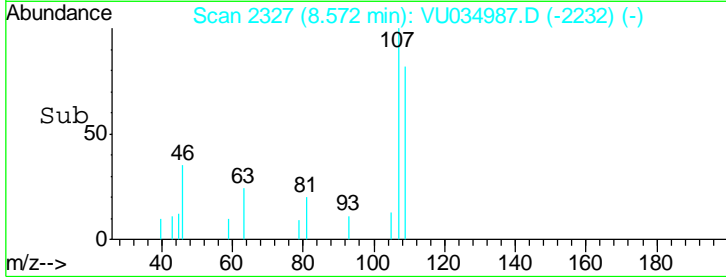
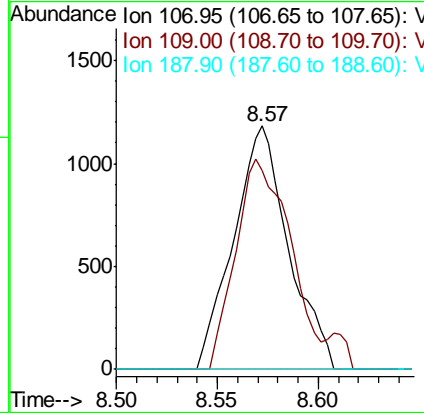
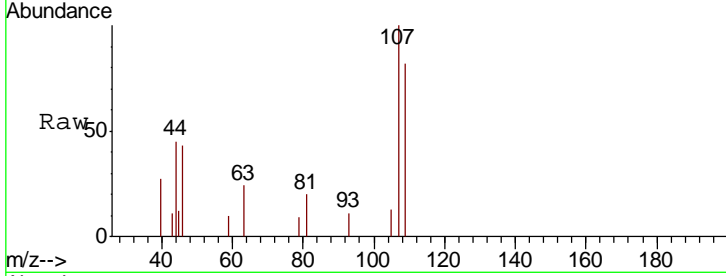
#50
 1,2-Dibromoethane
 Concen: 0.247 ug/L
 RT: 8.57 min Scan# 2327
 Delta R.T. 0.01 min
 Lab File: VU034987.D
 Acq: 08 Oct 2019 12:40

Instrument : MSVOA_U
 ClientSampled : MDL05

Tgt Ion	Resp	Lower	Upper
107	100		
109	81.7	64.8	120.4
188	0.0	3.0	4.6#

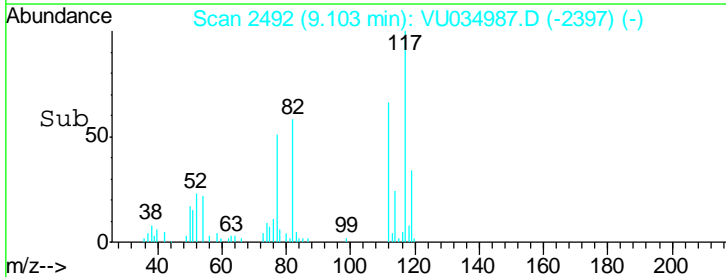
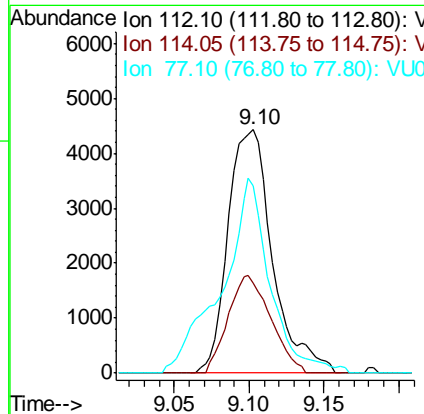
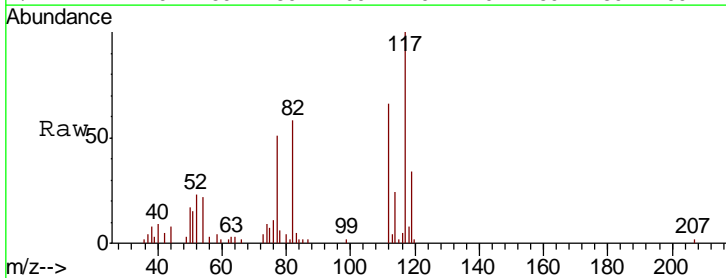
Manual Integrations
 APPROVED

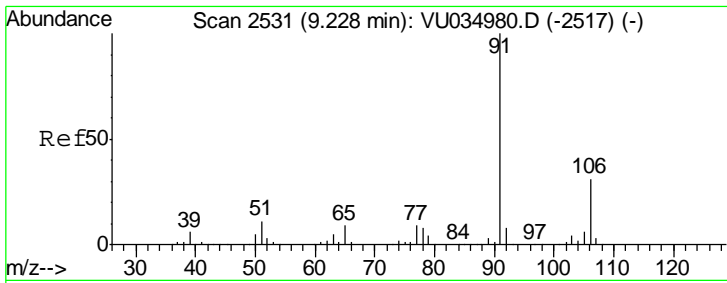
MMDadoda
 10/9/2019 3:48:01 PM



#51
 Chlorobenzene
 Concen: 0.256 ug/L
 RT: 9.10 min Scan# 2492
 Delta R.T. 0.01 min
 Lab File: VU034987.D
 Acq: 08 Oct 2019 12:40

Tgt Ion	Resp	Lower	Upper
112	100		
114	36.9	22.1	41.1
77	77.0	46.9	70.3#



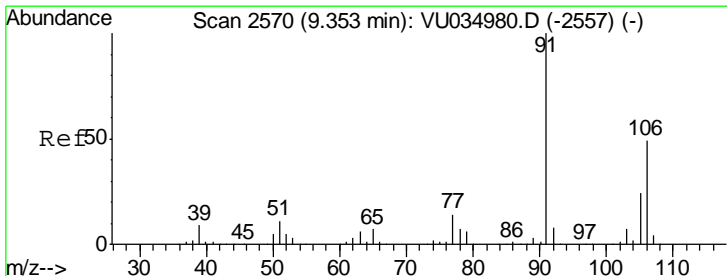
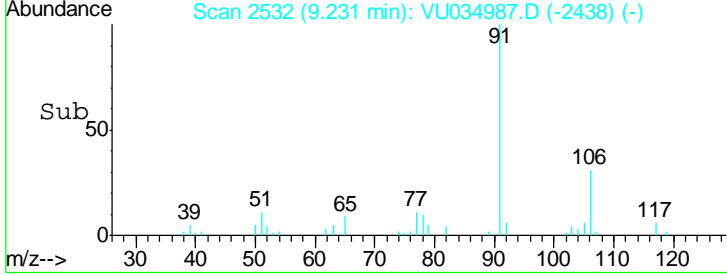
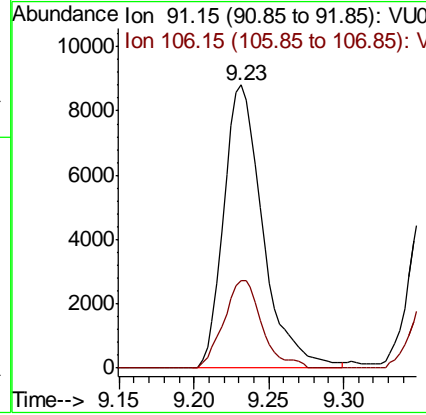
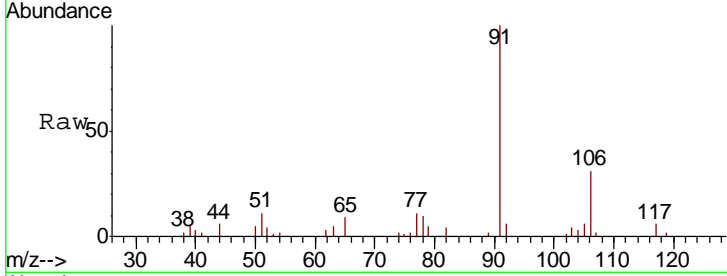


#52
Ethylbenzene
Concen: 0.263 ug/L
RT: 9.23 min Scan# 2532
Delta R.T. 0.00 min
Lab File: VU034987.D
Acq: 08 Oct 2019 12:40

Instrument : MSVOA_U
ClientSampled : MDL05

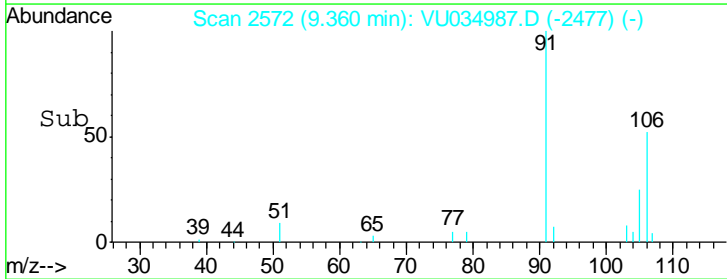
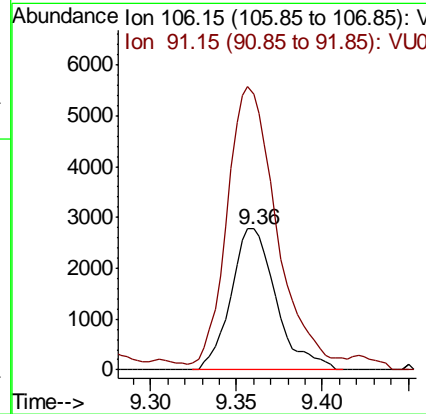
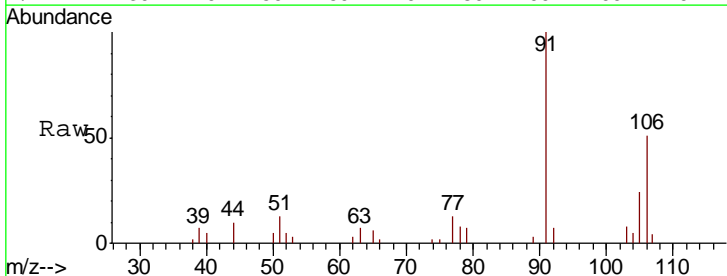
Tgt Ion: 91 Resp: 16047
Ion Ratio Lower Upper
91 100
106 30.8 21.6 40.2

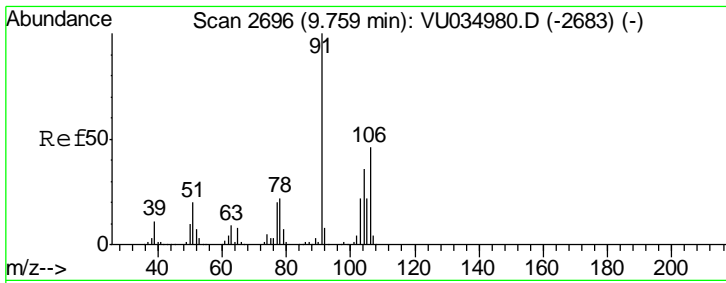
Manual Integrations APPROVED
MMDadoda
10/9/2019 3:48:01 PM



#53
m,p-Xylene
Concen: 0.225 ug/L
RT: 9.36 min Scan# 2572
Delta R.T. 0.01 min
Lab File: VU034987.D
Acq: 08 Oct 2019 12:40

Tgt Ion: 106 Resp: 5078
Ion Ratio Lower Upper
106 100
91 195.9 147.6 274.0





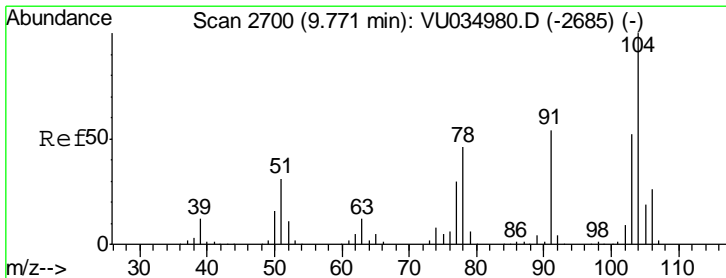
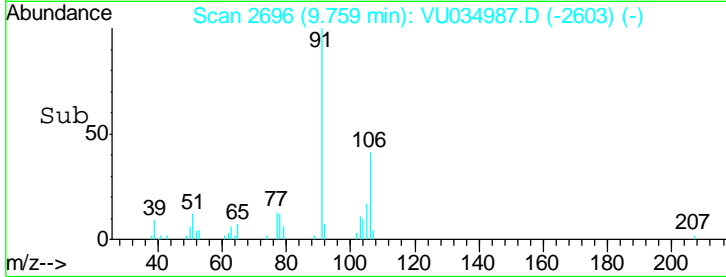
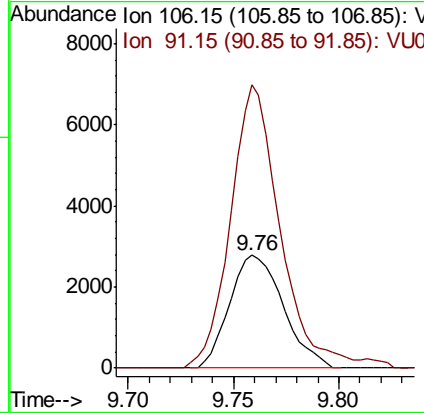
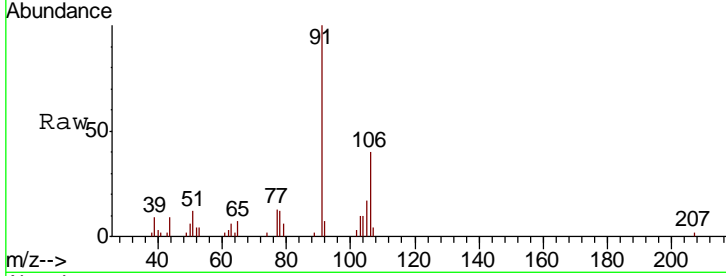
#54
 o-Xylene
 Concen: 0.223 ug/L
 RT: 9.76 min Scan# 2696
 Delta R.T. 0.00 min
 Lab File: VU034987.D
 Acq: 08 Oct 2019 12:40

Instrument : MSVOA_U
 ClientSampled : MDL05

Tgt Ion	Resp	Lower	Upper
106	4922		
106	100		
91	251.1	148.5	275.7

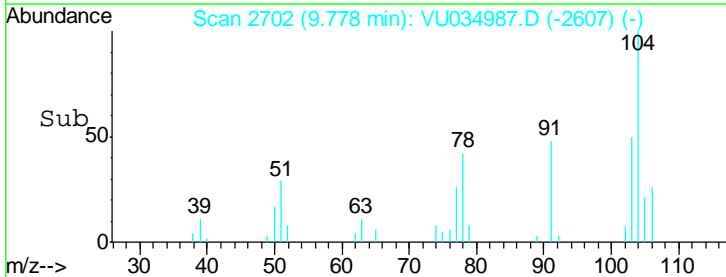
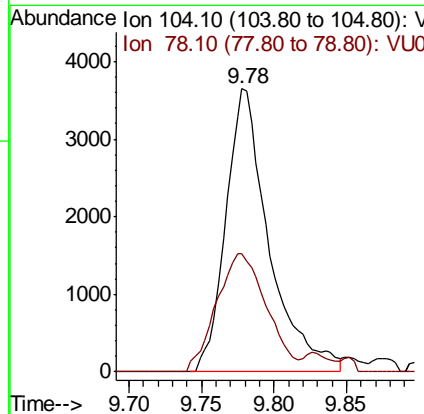
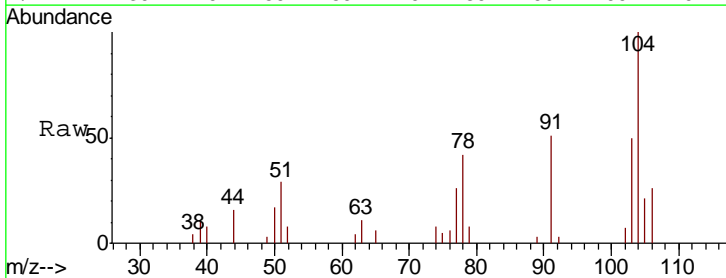
Manual Integrations
 APPROVED

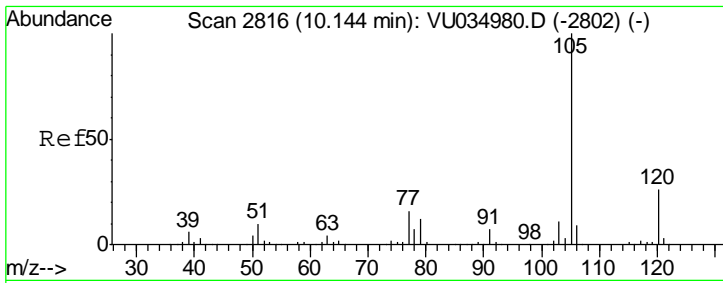
MMDadoda
 10/9/2019 3:48:01 PM



#55
 Styrene
 Concen: 0.211 ug/L
 RT: 9.78 min Scan# 2702
 Delta R.T. 0.01 min
 Lab File: VU034987.D
 Acq: 08 Oct 2019 12:40

Tgt Ion	Resp	Lower	Upper
104	7549		
104	100		
78	42.0	32.8	60.8



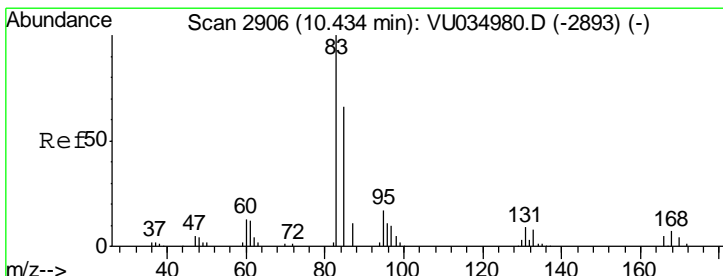
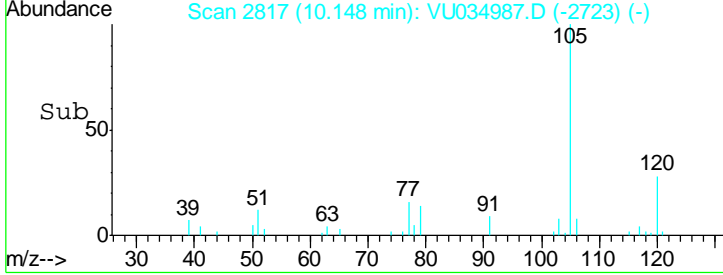
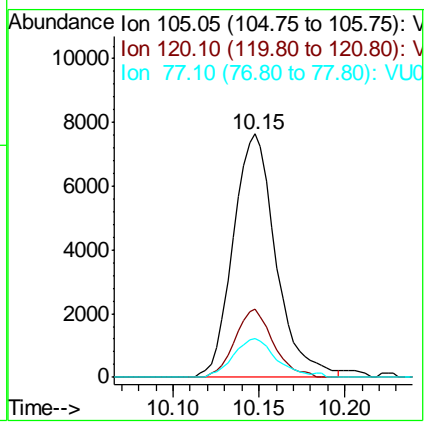
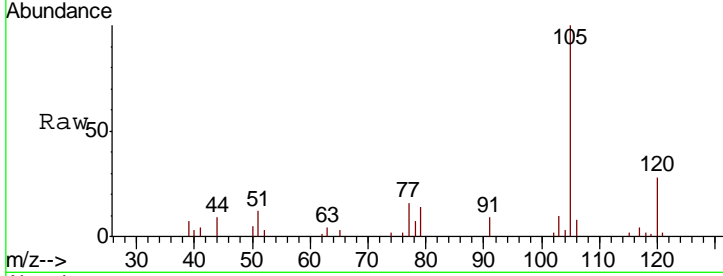


#56
 Isopropylbenzene
 Concen: 0.225 ug/L
 RT: 10.15 min Scan# 2817
 Delta R.T. 0.00 min
 Lab File: VU034987.D
 Acq: 08 Oct 2019 12:40

Instrument : MSVOA_U
 ClientSampled : MDL05

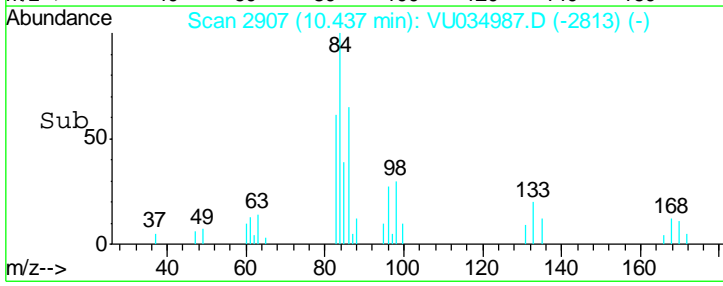
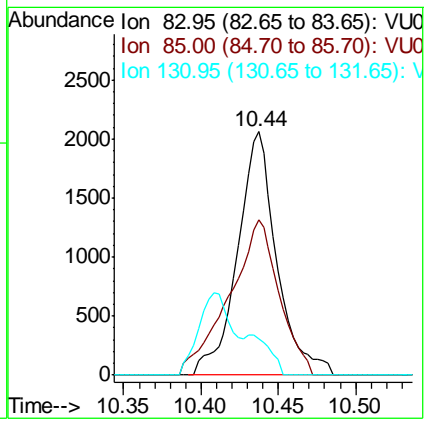
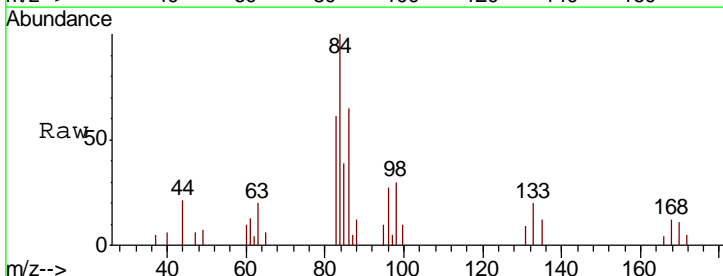
Tgt Ion	Resp	Lower	Upper
105	13242		
120	25.2	21.3	31.9
77	16.1	13.0	19.4

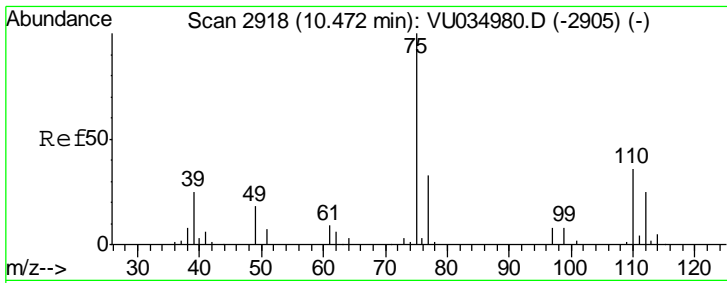
Manual Integrations
APPROVED
 MMDadoda
 10/9/2019 3:48:01 PM



#58
 1,1,2,2-Tetrachloroethane
 Concen: 0.281 ug/L
 RT: 10.44 min Scan# 2907
 Delta R.T. 0.00 min
 Lab File: VU034987.D
 Acq: 08 Oct 2019 12:40

Tgt Ion	Resp	Lower	Upper
83	3632		
85	64.0	44.6	82.8
131	15.1	7.4	11.2#



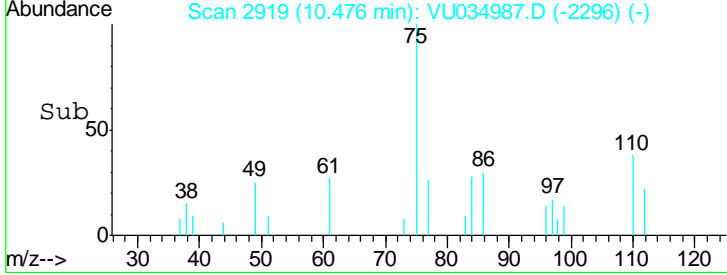
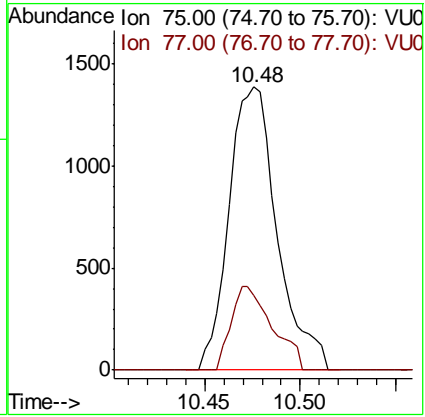
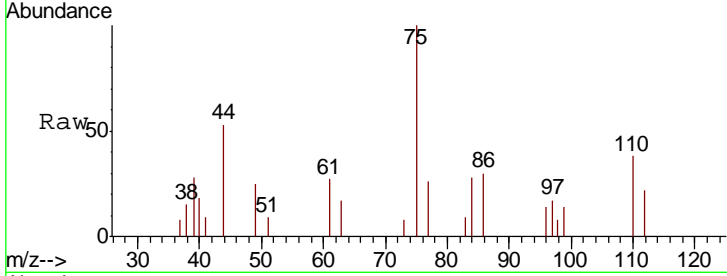


#59
 1,2,3-Trichloropropane
 Concen: 0.263 ug/L m
 RT: 10.48 min Scan# 2919
 Delta R.T. 0.00 min
 Lab File: VU034987.D
 Acq: 08 Oct 2019 12:40

Instrument : MSVOA_U
 ClientSampled : MDL05

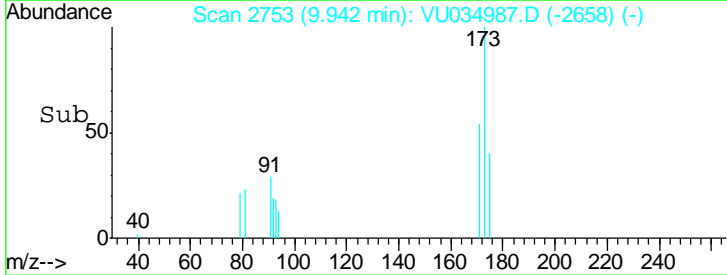
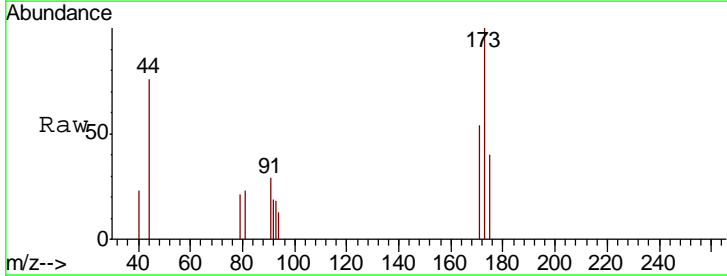
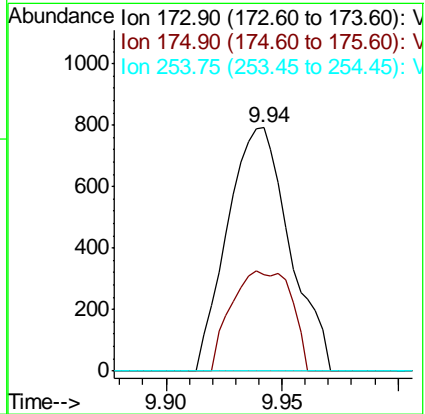
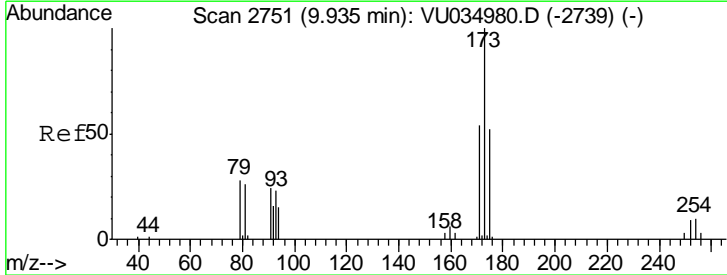
Tgt Ion	Resp	Lower	Upper
75	100		
77	140.5	26.5	39.7#

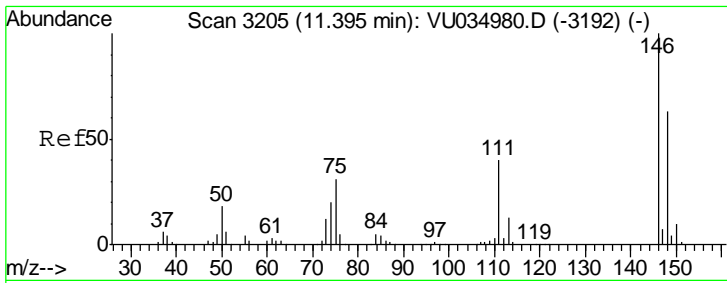
Manual Integrations
APPROVED
 MMDadoda
 10/9/2019 3:48:01 PM



#61
 Bromoform
 Concen: 0.286 ug/L
 RT: 9.94 min Scan# 2753
 Delta R.T. 0.01 min
 Lab File: VU034987.D
 Acq: 08 Oct 2019 12:40

Tgt Ion	Resp	Lower	Upper
173	100		
175	39.8	37.2	55.8
254	0.0	6.6	9.8#





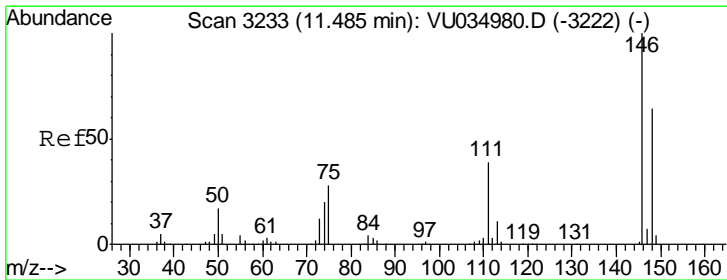
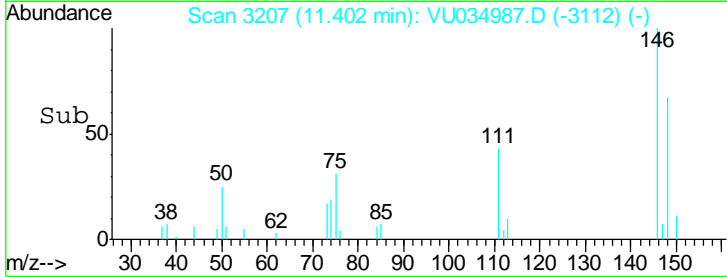
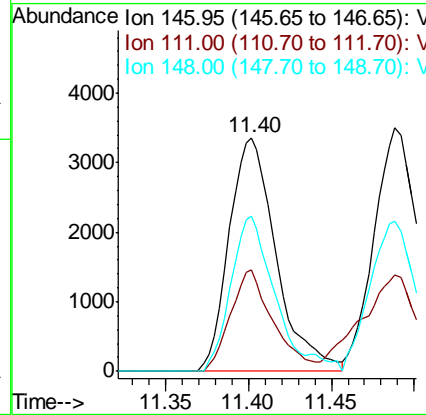
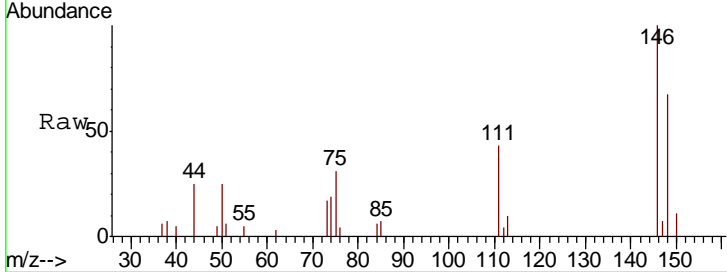
#62
 1,3-Dichlorobenzene
 Concen: 0.286 ug/L
 RT: 11.40 min Scan# 3207
 Delta R.T. 0.01 min
 Lab File: VU034987.D
 Acq: 08 Oct 2019 12:40

Instrument :
 MSVOA_U
 ClientSampled :
 MDL05

Tgt Ion	Ratio	Lower	Upper
146	100		
111	43.4	28.6	53.2
148	66.7	45.0	83.6

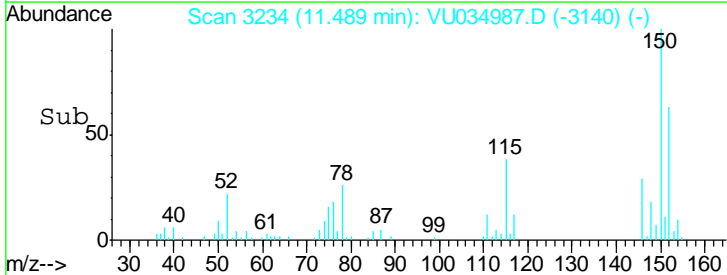
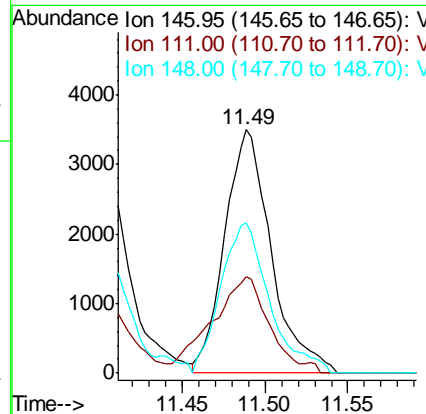
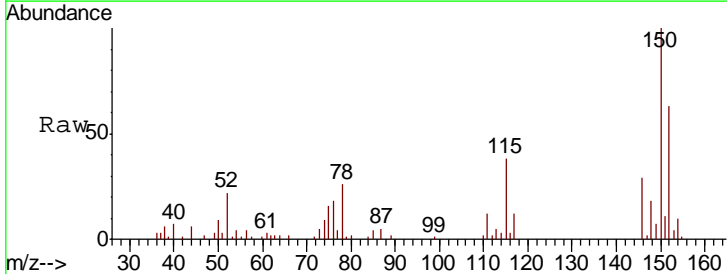
Manual Integrations
 APPROVED

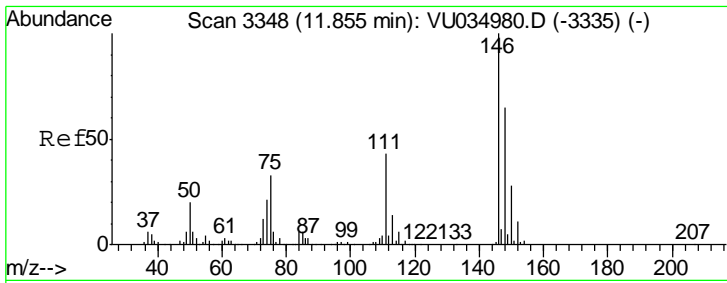
MMDadoda
 10/9/2019 3:48:01 PM



#63
 1,4-Dichlorobenzene
 Concen: 0.292 ug/L
 RT: 11.49 min Scan# 3234
 Delta R.T. 0.00 min
 Lab File: VU034987.D
 Acq: 08 Oct 2019 12:40

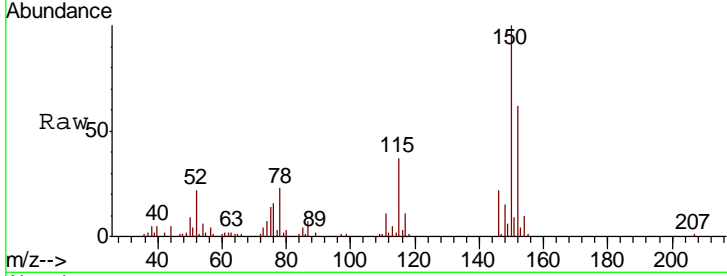
Tgt Ion	Ratio	Lower	Upper
146	100		
111	39.7	27.9	51.7
148	61.9	44.1	81.9





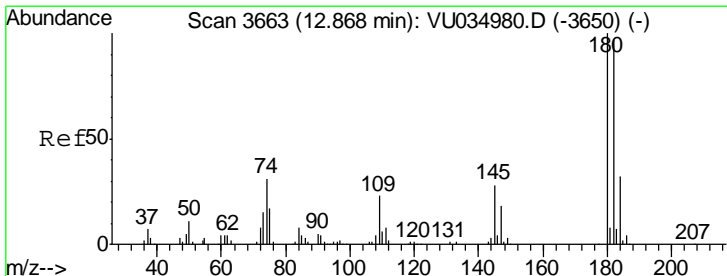
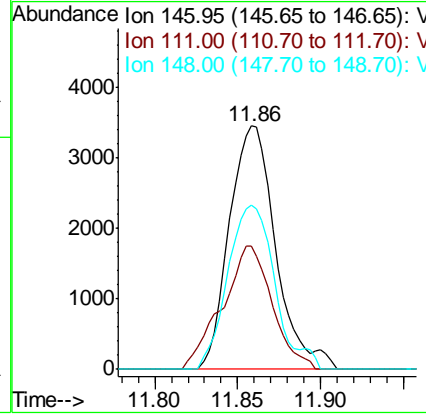
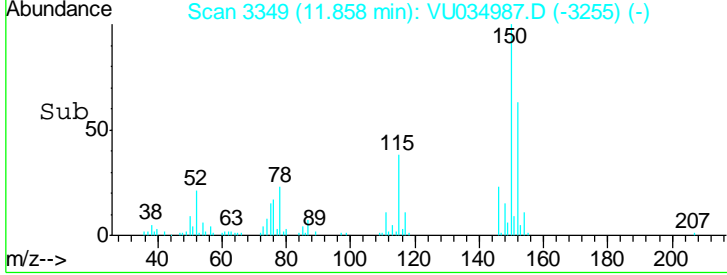
#65
 1,2-Dichlorobenzene
 Concen: 0.301 ug/L
 RT: 11.86 min Scan# 3349
 Delta R.T. 0.00 min
 Lab File: VU034987.D
 Acq: 08 Oct 2019 12:40

Instrument : MSVOA_U
 Client Sampled : MDL05

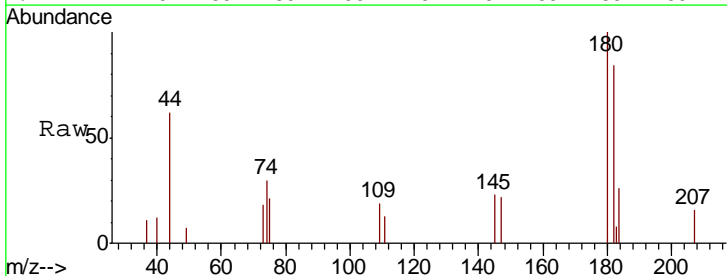


Tgt Ion	Resp	Lower	Upper
146	100		
111	50.7	34.2	51.4
148	67.3	52.0	78.0

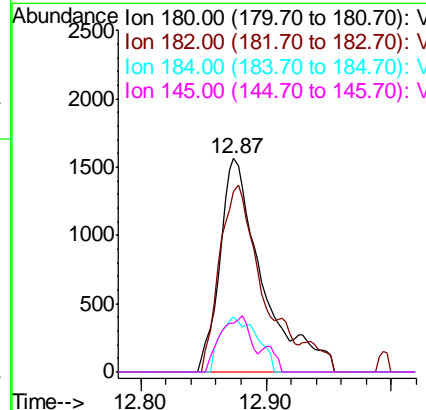
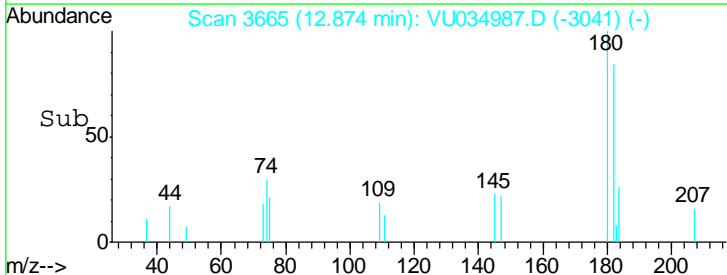
Manual Integrations APPROVED
 MMDadoda
 10/9/2019 3:48:01 PM

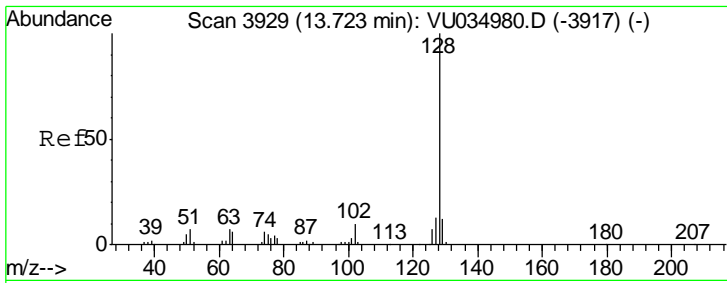


#67
 1,3,5-Trichlorobenzene
 Concen: 0.235 ug/L m
 RT: 12.87 min Scan# 3665
 Delta R.T. 0.01 min
 Lab File: VU034987.D
 Acq: 08 Oct 2019 12:40



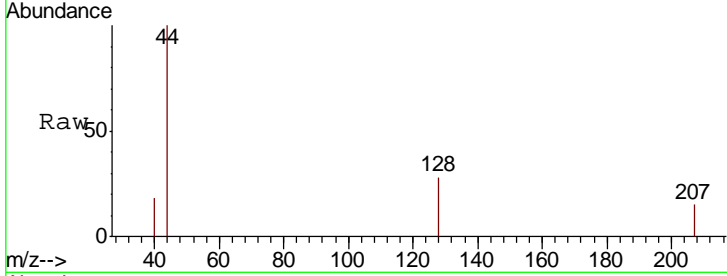
Tgt Ion	Resp	Lower	Upper
180	100		
182	86.0	76.0	114.0
184	22.4	24.2	36.2#
145	18.9	24.6	37.0#





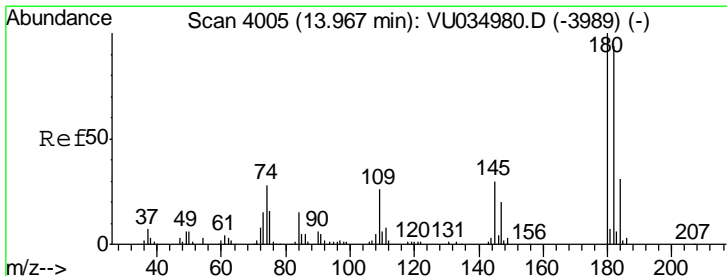
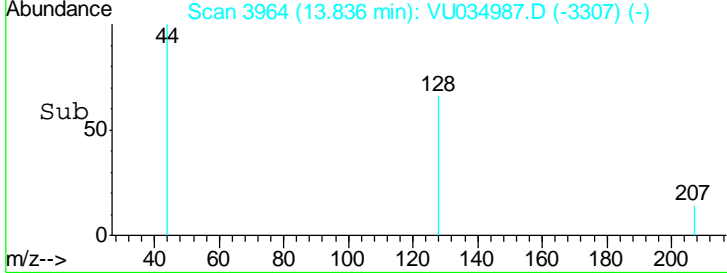
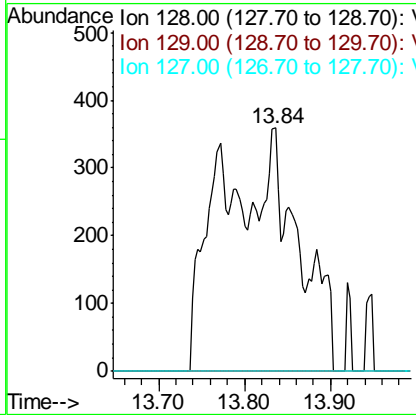
#69
 Naphthalene
 Concen: 0.118 ug/L m
 RT: 13.84 min Scan# 3964
 Delta R.T. 0.11 min
 Lab File: VU034987.D
 Acq: 08 Oct 2019 12:40

Instrument : MSVOA_U
 Client Sampled : MDL05



Tgt Ion	Resp	Lower	Upper
128	100		
129	0.0	8.7	13.1#
127	0.0	10.6	15.8#

Manual Integrations
APPROVED
 MMDadoda
 10/9/2019 3:48:01 PM



#70
 1,2,3-Trichlorobenzene
 Concen: 0.169 ug/L m
 RT: 14.00 min Scan# 4014
 Delta R.T. 0.03 min
 Lab File: VU034987.D
 Acq: 08 Oct 2019 12:40

Tgt Ion	Resp	Lower	Upper
180	100		
182	35.6	77.0	115.4#
145	11.1	25.9	38.9#

