

Data Path : Z:\VOASRV\HPCHEM1\MSVOA U\DATA\VU100820\
 Data File : VU040569.D
 Acq On : 08 Oct 2020 18:18
 Operator : SY/MD
 Sample : L4286-13
 Misc : 25.0mL/MSVOA U/WATER
 ALS Vial : 18 Sample Multiplier: 1

Instrument :
 MSVOA_U
 ClientSampleId :
 COAWO

Quant Time: Oct 09 03:29:31 2020
 Quant Method : Z:\VOASRV\HPCHEM1\MSVOA_U\METHOD\SOMUTR100820WMA.M
 Quant Title : TRACE VOA SOM01.0
 QLast Update : Fri Oct 09 01:55:27 2020
 Response via : Initial Calibration

Internal Standards	R.T.	QIon	Response	Conc	Units	Dev(Min)
1) 1,4-Difluorobenzene	6.26	114	153091	5.00	ug/L	0.00
28) Chlorobenzene-d5	9.42	117	151998	5.00	ug/L	0.00
60) 1,4-Dichlorobenzene-d4	11.81	152	68384	5.00	ug/L	0.00

System Monitoring Compounds

4) Vinyl Chloride-d3	1.61	65	56054	4.42	ug/L	0.00
Spiked Amount	5.000	Range	40 - 130	Recovery	=	88.40%
7) Chloroethane-d5	1.92	69	44433	4.54	ug/L	0.00
Spiked Amount	5.000	Range	65 - 130	Recovery	=	90.80%
11) 1,1-Dichloroethene-d2	2.58	63	83551	3.37	ug/L	0.00
Spiked Amount	5.000	Range	60 - 125	Recovery	=	67.40%
20) 2-Butanone-d5	4.66	46	194433	47.90	ug/L	0.00
Spiked Amount	50.000	Range	40 - 130	Recovery	=	95.80%
24) Chloroform-d	5.08	84	104252	4.68	ug/L	0.00
Spiked Amount	5.000	Range	70 - 125	Recovery	=	93.60%
26) 1,2-Dichloroethane-d4	5.72	65	62514	4.61	ug/L	0.00
Spiked Amount	5.000	Range	70 - 130	Recovery	=	92.20%
32) Benzene-d6	5.74	84	193913	4.73	ug/L	0.00
Spiked Amount	5.000	Range	70 - 125	Recovery	=	94.60%
36) 1,2-Dichloropropane-d6	6.70	67	65674	4.83	ug/L	0.00
Spiked Amount	5.000	Range	60 - 140	Recovery	=	96.60%
41) Toluene-d8	7.91	98	164811	4.49	ug/L	0.00
Spiked Amount	5.000	Range	70 - 130	Recovery	=	89.80%
43) trans-1,3-Dichloropropene-	8.19	79	26941	4.67	ug/L	0.00
Spiked Amount	5.000	Range	55 - 130	Recovery	=	93.40%
46) 2-Hexanone-d5	8.64	63	140108	47.16	ug/L	0.00
Spiked Amount	50.000	Range	45 - 130	Recovery	=	94.32%
57) 1,1,2,2-Tetrachloroethane-	10.75	84	53792	4.41	ug/L	0.00
Spiked Amount	5.000	Range	65 - 120	Recovery	=	88.20%
64) 1,2-Dichlorobenzene-d4	12.19	152	65928	5.20	ug/L	0.00
Spiked Amount	5.000	Range	80 - 120	Recovery	=	104.00%

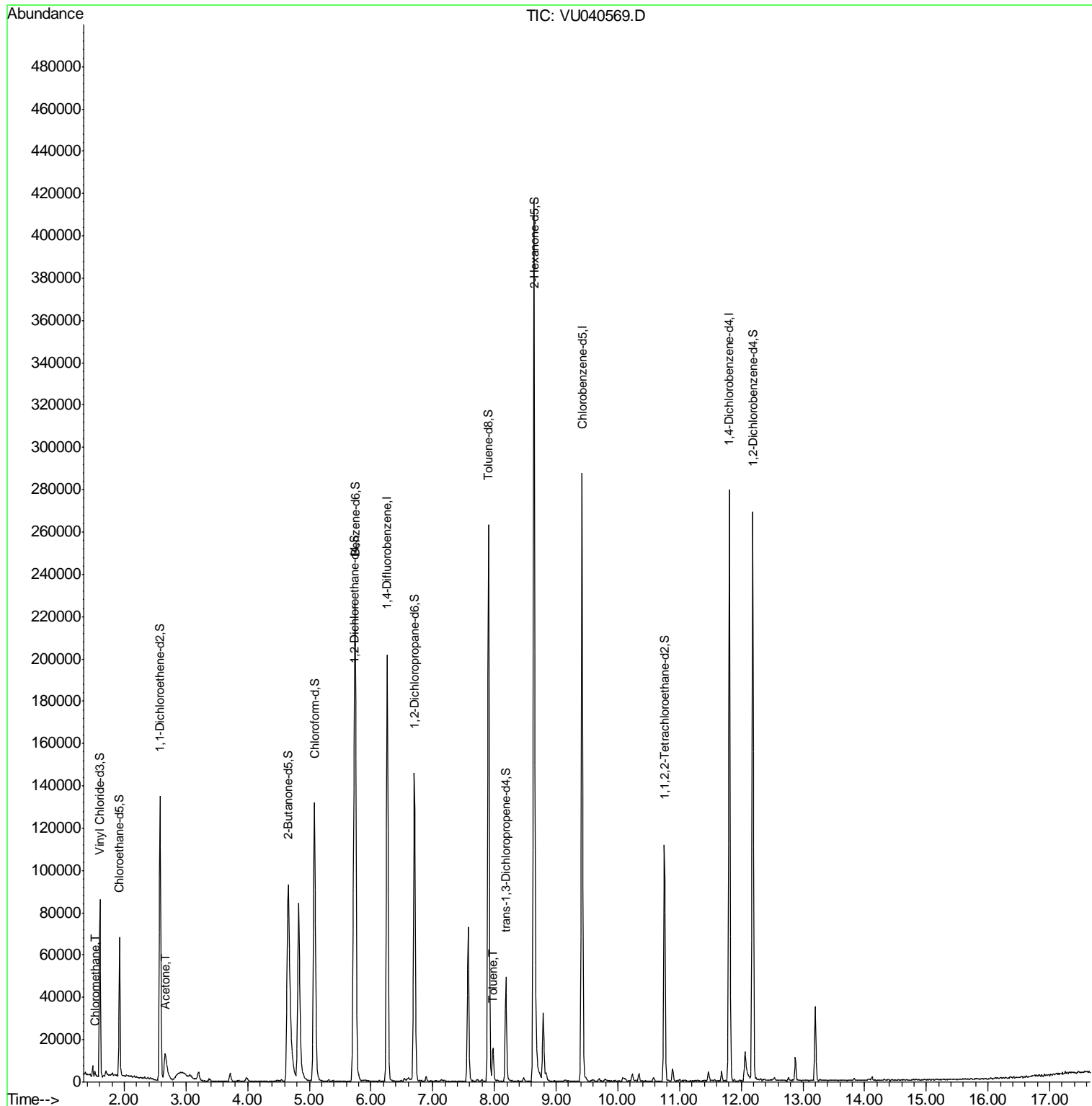
Target Compounds					Ovalue
3) Chloromethane	1.53	50	1854	0.143 ug/L	93
13) Acetone	2.66	43	27919	8.873 ug/L	96
42) Toluene	7.98	91	10369	0.208 ug/L	98

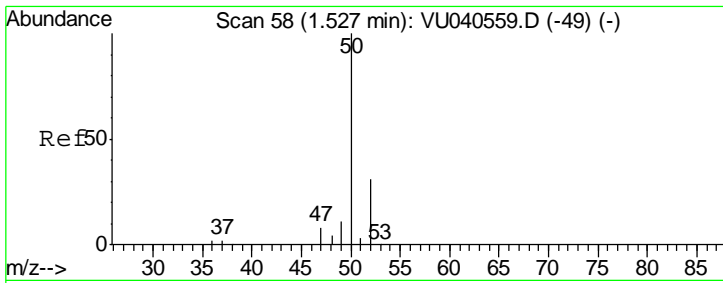
(#) = qualifier out of range (m) = manual integration (+) = signals summed

Data Path : Z:\VOASRV\HPCHEM1\MSVOA U\DATA\VU100820\
 Data File : VU040569.D
 Acq On : 08 Oct 2020 18:18
 Operator : SY/MD
 Sample : L4286-13
 Misc : 25.0mL/MSVOA U/WATER
 ALS Vial : 18 Sample Multiplier: 1

Instrument :
 MSVOA_U
 ClientSampleID :
 C0AW0

Quant Time: Oct 09 03:29:31 2020
 Quant Method : Z:\VOASRV\HPCHEM1\MSVOA_U\METHOD\SOMUTR100820WMA.M
 Quant Title : TRACE VOA SOM01.0
 QLast Update : Fri Oct 09 01:55:27 2020
 Response via : Initial Calibration

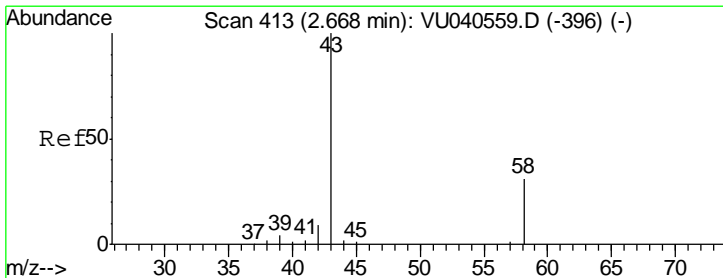
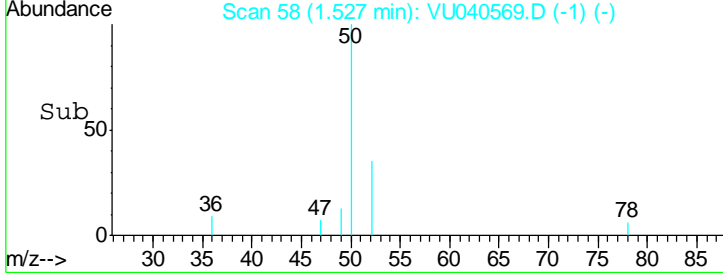
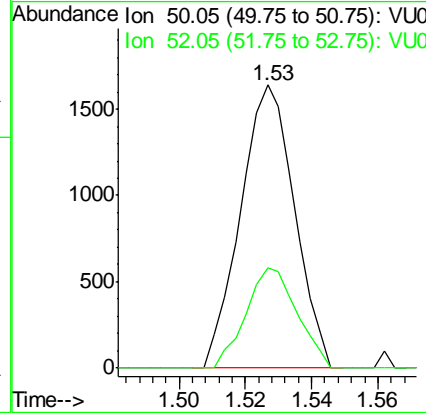
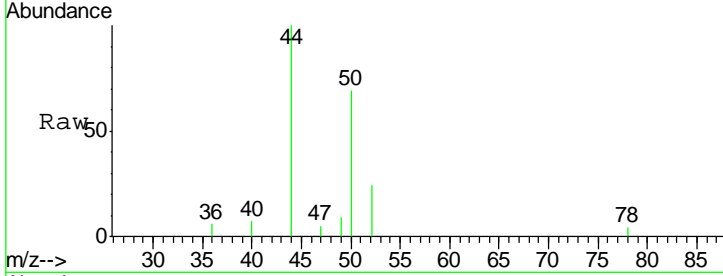




#3
 Chloromethane
 Concen: 0.143 ug/L
 RT: 1.53 min Scan# 58
 Delta R.T. 0.00 min
 Lab File: VU040569.D
 Acq: 08 Oct 2020 18:18

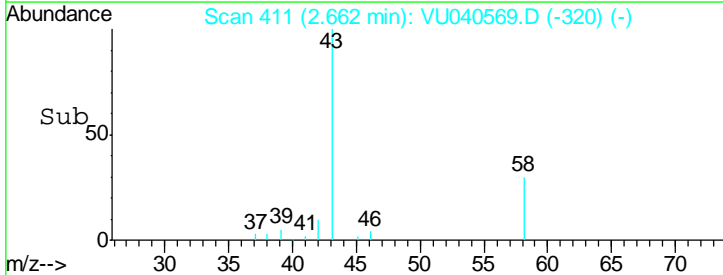
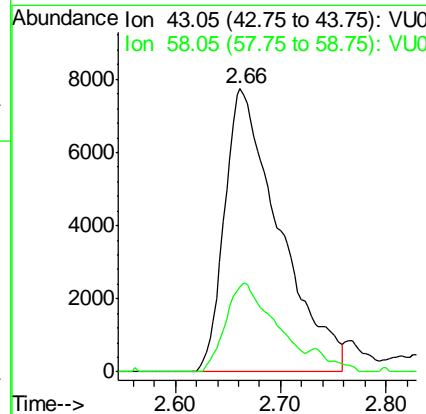
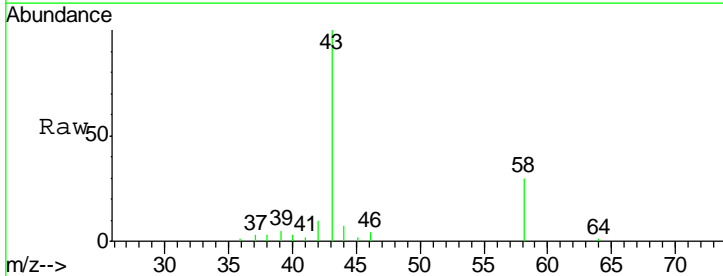
Instrument :
 MSVOA_U
ClientSampled :
 COAW0

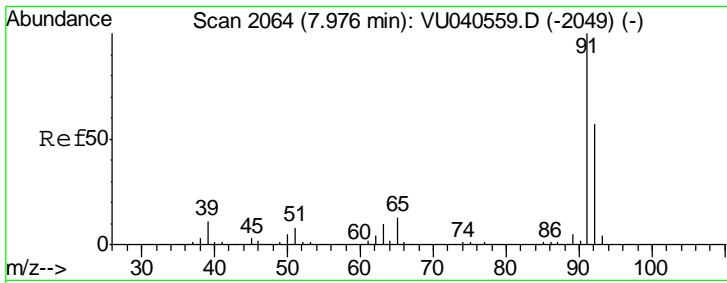
Tgt Ion	Resp	Lower	Upper
50	1854		
52	35.4	21.9	40.7



#13
 Acetone
 Concen: 8.873 ug/L
 RT: 2.66 min Scan# 411
 Delta R.T. -0.01 min
 Lab File: VU040569.D
 Acq: 08 Oct 2020 18:18

Tgt Ion	Resp	Lower	Upper
43	27919		
58	27.9	0.0	60.6





#42
 Toluene
 Concen: 0.208 ug/L
 RT: 7.98 min Scan# 2064
 Delta R.T. 0.00 min
 Lab File: VU040569.D
 Acq: 08 Oct 2020 18:18

Instrument :
 MSVOA_U
ClientSampled :
 COAW0

Tot Ion	91	Resp	10369
Ion	Ratio	Lower	Upper
91	100		
92	58.6	40.2	74.6

