

Data Path : Z:\VOASRV\HPCHEM1\MSVOA U\DATA\VU100920\  
 Data File : VU040618.D  
 Acq On : 10 Oct 2020 05:10  
 Operator : SY/MD  
 Sample : L4352-18  
 Misc : 25.0mL/MSVOA U/WATER  
 ALS Vial : 46 Sample Multiplier: 1

Instrument :  
 MSVOA\_U  
 Client Sampled :  
 ETZ10

Quant Time: Oct 10 06:09:21 2020  
 Quant Method : Z:\VOASRV\HPCHEM1\MSVOA\_U\METHOD\SOMUTR100820WMA.M  
 Quant Title : TRACE VOA SOM01.0  
 QLast Update : Sat Oct 10 05:58:50 2020  
 Response via : Initial Calibration

Internal Standards	R.T.	QIon	Response	Conc	Units	Dev(Min)
1) 1,4-Difluorobenzene	6.26	114	132437	5.00	ug/L	0.00
28) Chlorobenzene-d5	9.42	117	135042	5.00	ug/L	0.00
60) 1,4-Dichlorobenzene-d4	11.81	152	58288	5.00	ug/L	0.00

## System Monitoring Compounds

4) Vinyl Chloride-d3	1.60	65	48005	4.37	ug/L	0.00
Spiked Amount	5.000	Range	40 - 130	Recovery	=	87.40%
7) Chloroethane-d5	1.92	69	40389	4.77	ug/L	0.00
Spiked Amount	5.000	Range	65 - 130	Recovery	=	95.40%
11) 1,1-Dichloroethene-d2	2.58	63	73023	3.40	ug/L	0.00
Spiked Amount	5.000	Range	60 - 125	Recovery	=	68.00%
20) 2-Butanone-d5	4.66	46	188711	53.74	ug/L	0.00
Spiked Amount	50.000	Range	40 - 130	Recovery	=	107.48%
24) Chloroform-d	5.08	84	94047	4.88	ug/L	0.00
Spiked Amount	5.000	Range	70 - 125	Recovery	=	97.60%
26) 1,2-Dichloroethane-d4	5.72	65	59378	5.06	ug/L	0.00
Spiked Amount	5.000	Range	70 - 130	Recovery	=	101.20%
32) Benzene-d6	5.74	84	177476	4.87	ug/L	0.00
Spiked Amount	5.000	Range	70 - 125	Recovery	=	97.40%
36) 1,2-Dichloropropane-d6	6.70	67	60063	4.97	ug/L	0.00
Spiked Amount	5.000	Range	60 - 140	Recovery	=	99.40%
41) Toluene-d8	7.91	98	143079	4.39	ug/L	0.00
Spiked Amount	5.000	Range	70 - 130	Recovery	=	87.80%
43) trans-1,3-Dichloropropene-	8.19	79	23288	4.55	ug/L	0.00
Spiked Amount	5.000	Range	55 - 130	Recovery	=	91.00%
46) 2-Hexanone-d5	8.64	63	130823	49.56	ug/L	0.00
Spiked Amount	50.000	Range	45 - 130	Recovery	=	99.12%
57) 1,1,2,2-Tetrachloroethane-	10.75	84	53344	4.92	ug/L	0.00
Spiked Amount	5.000	Range	65 - 120	Recovery	=	98.40%
64) 1,2-Dichlorobenzene-d4	12.19	152	56872	5.26	ug/L	0.00
Spiked Amount	5.000	Range	80 - 120	Recovery	=	105.20%

## Target Compounds

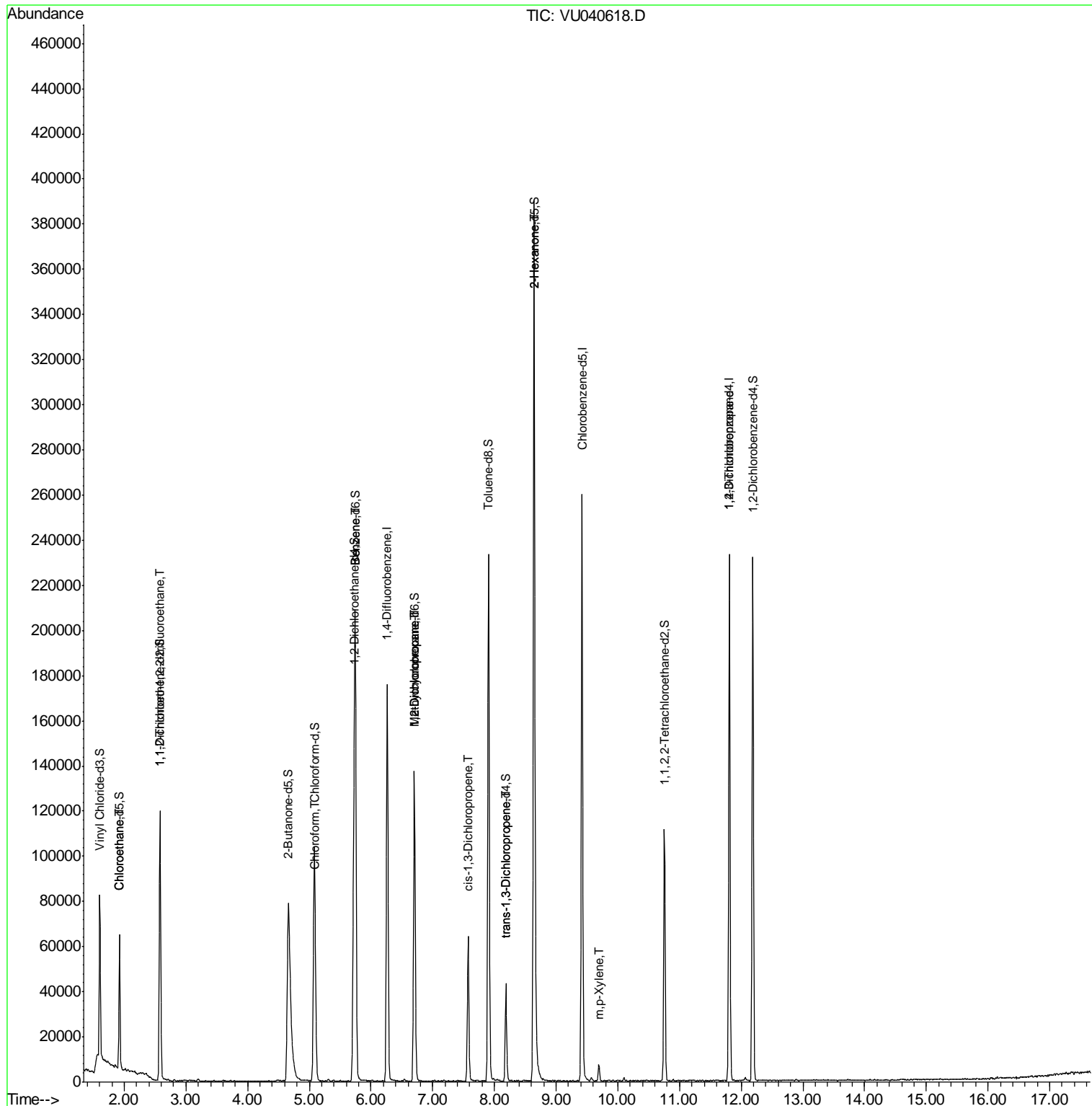
Target Compounds	R.T.	QIon	Response	Conc	Units	Ovalue
8) Chloroethane	1.93	64	1518	0.202	ug/L #	51
10) 1,1,2-Trichloro-1,2,2-trif	2.58	101	622	0.056	ug/L #	20
25) Chloroform	5.11	83	4127	0.198	ug/L	96
33) Benzene	5.75	78	1424	0.033	ug/L	100
35) Methylcyclohexane	6.70	83	14127	0.886	ug/L #	14
37) 1,2-Dichloropropane	6.71	63	7454	0.617	ug/L #	87
39) cis-1,3-Dichloropropene	7.58	75	1465	0.089	ug/L #	53
44) trans-1,3-Dichloropropene	8.19	75	1133	0.075	ug/L #	67
48) 2-Hexanone	8.64	43	17701	2.467	ug/L #	75
53) m,p-Xylene	9.69	106	2082	0.119	ug/L	99
59) 1,2,3-Trichloropropane	11.81	75	7208	0.812	ug/L #	85

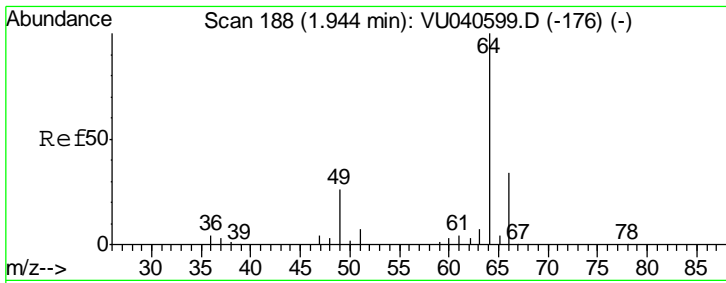
(#) = qualifier out of range (m) = manual integration (+) = signals summed

Data Path : Z:\VOASRV\HPCHEM1\MSVOA U\DATA\VU100920\  
 Data File : VU040618.D  
 Acq On : 10 Oct 2020 05:10  
 Operator : SY/MD  
 Sample : L4352-18  
 Misc : 25.0mL/MSVOA U/WATER  
 ALS Vial : 46 Sample Multiplier: 1

Instrument :  
 MSVOA\_U  
 ClientSampleId :  
 ETZ10

Quant Time: Oct 10 06:09:21 2020  
 Quant Method : Z:\VOASRV\HPCHEM1\MSVOA\_U\METHOD\SOMUTR100820WMA.M  
 Quant Title : TRACE VOA SOM01.0  
 QLast Update : Sat Oct 10 05:58:50 2020  
 Response via : Initial Calibration

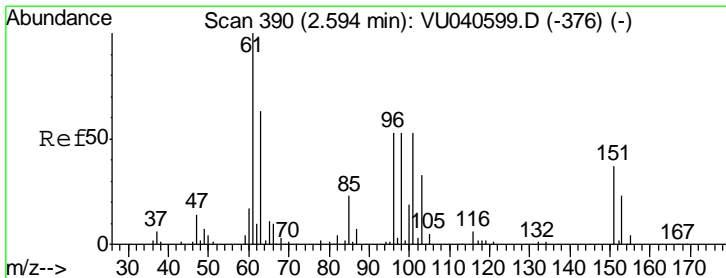
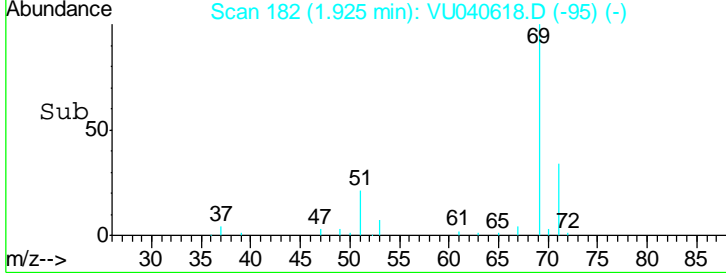
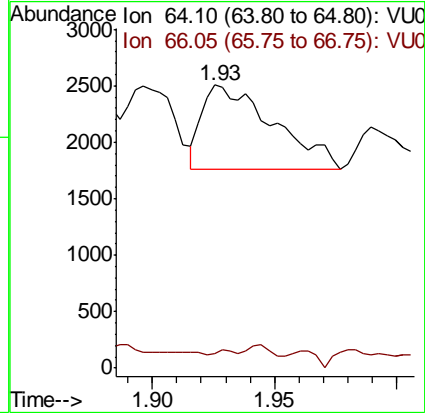
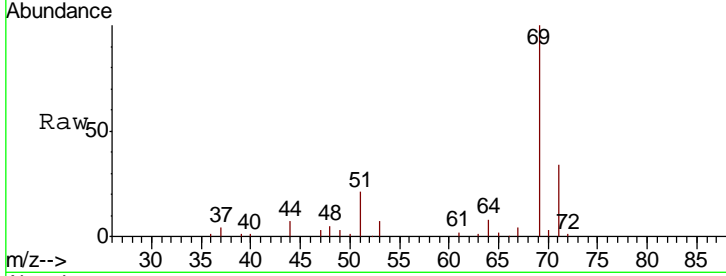




#8  
 Chloroethane  
 Concen: 0.202 ug/L  
 RT: 1.93 min Scan# 182  
 Delta R.T. -0.02 min  
 Lab File: VU040618.D  
 Acq: 10 Oct 2020 05:10

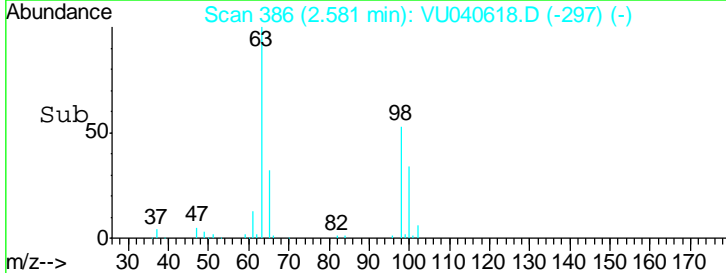
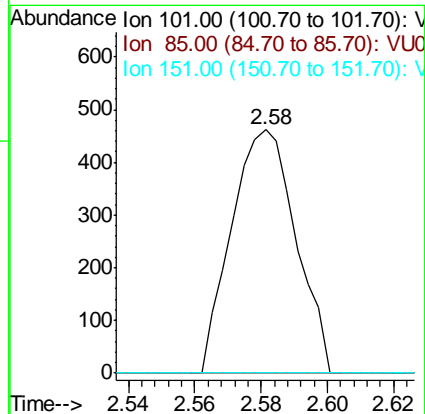
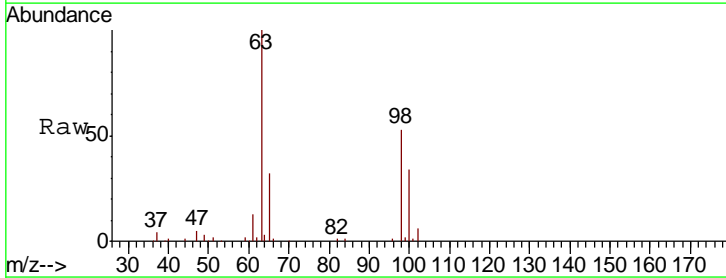
Instrument :  
 MSVOA\_U  
 ClientSampled :  
 ETZ10

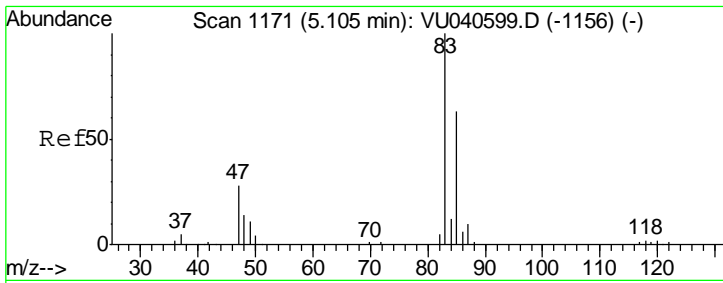
Tgt Ion	Resp	Lower	Upper
64	1518		
66	5.2	23.3	43.3#



#10  
 1,1,2-Trichloro-1,2,2-trifluoroethane  
 Concen: 0.056 ug/L  
 RT: 2.58 min Scan# 386  
 Delta R.T. -0.01 min  
 Lab File: VU040618.D  
 Acq: 10 Oct 2020 05:10

Tgt Ion	Resp	Lower	Upper
101	622		
85	0.0	36.7	55.1#
151	0.0	58.0	87.0#

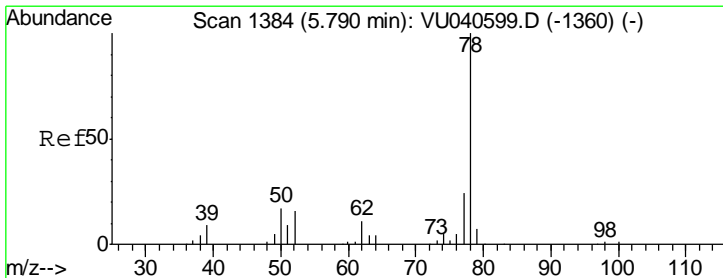
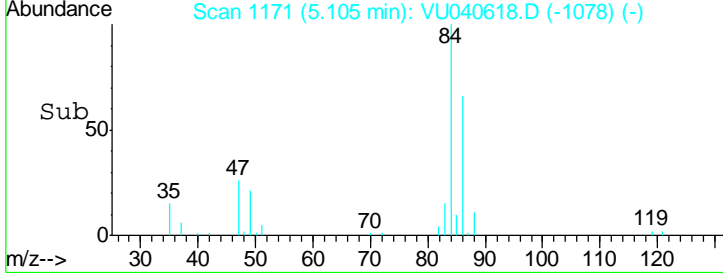
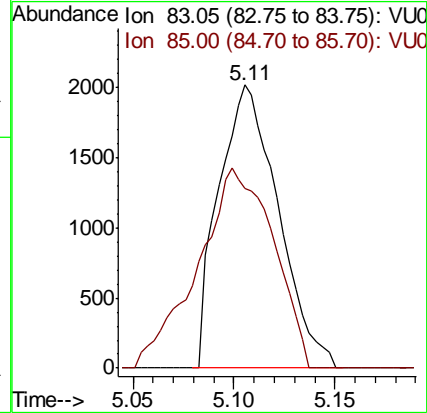
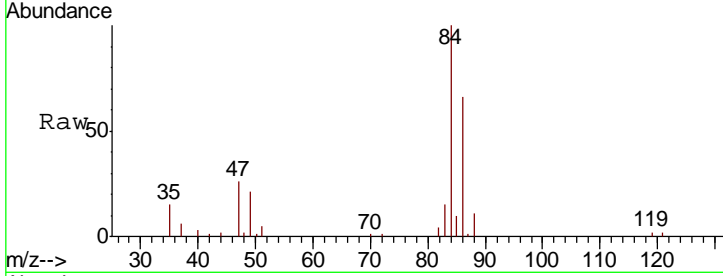




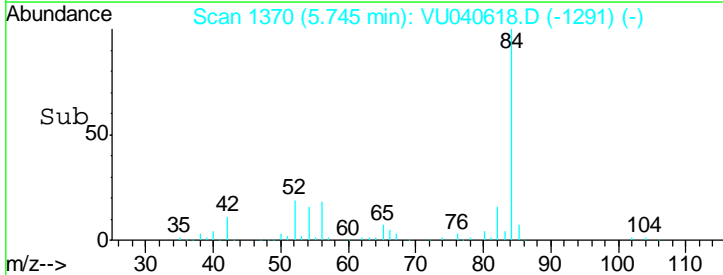
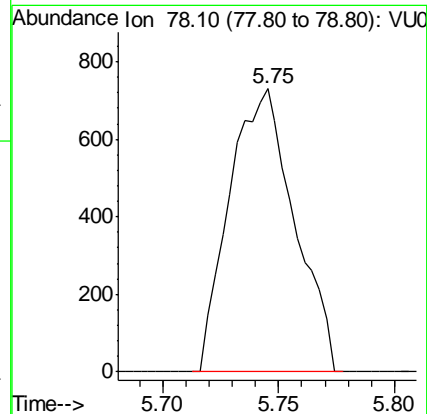
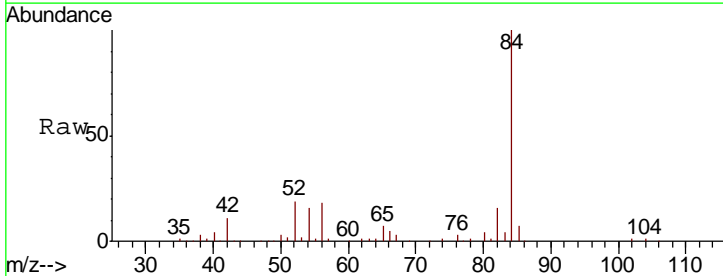
#25  
 Chloroform  
 Concen: 0.198 ug/L  
 RT: 5.11 min Scan# 1171  
 Delta R.T. 0.00 min  
 Lab File: VU040618.D  
 Acq: 10 Oct 2020 05:10

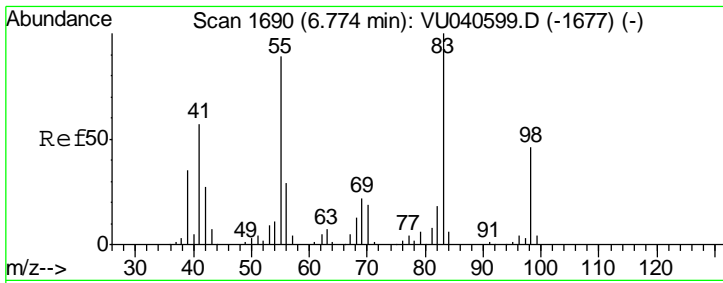
Instrument :  
 MSVOA\_U  
 ClientSampled :  
 ETZ10

Tgt Ion: 83 Resp: 4127  
 Ion Ratio Lower Upper  
 83 100  
 85 63.5 46.5 86.5



#33  
 Benzene  
 Concen: 0.033 ug/L  
 RT: 5.75 min Scan# 1370  
 Delta R.T. -0.04 min  
 Lab File: VU040618.D  
 Acq: 10 Oct 2020 05:10  
 Tgt Ion: 78 Resp: 1424

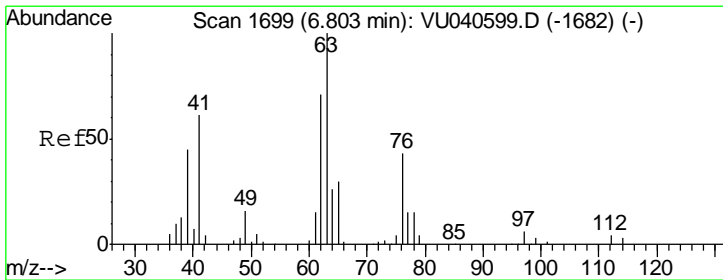
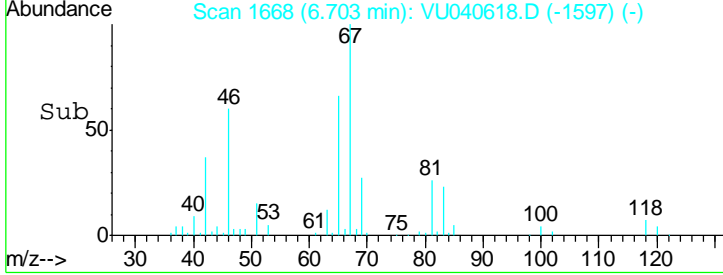
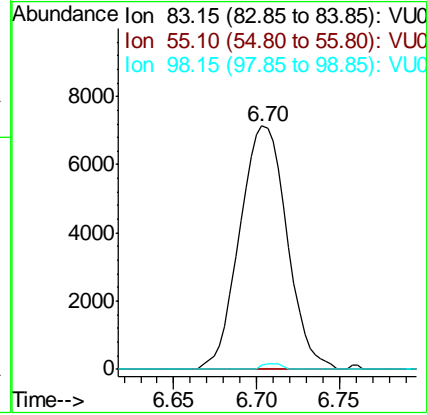
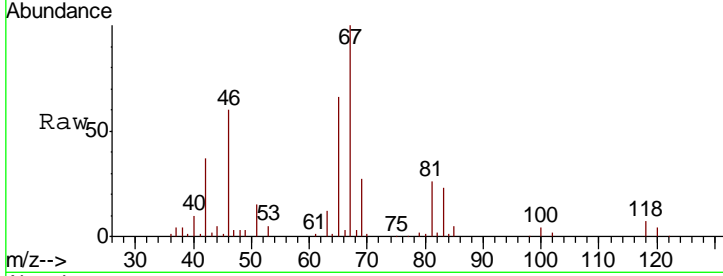




#35  
 Methylcyclohexane  
 Concen: 0.886 ug/L  
 RT: 6.70 min Scan# 1668  
 Delta R.T. -0.07 min  
 Lab File: VU040618.D  
 Acq: 10 Oct 2020 05:10

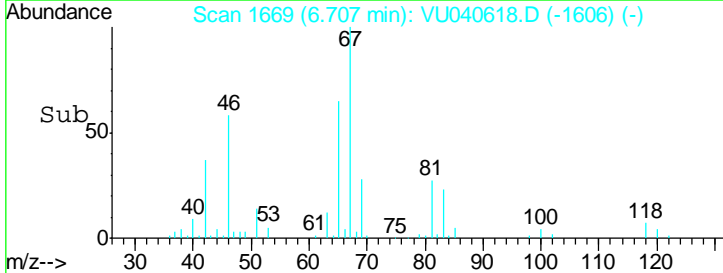
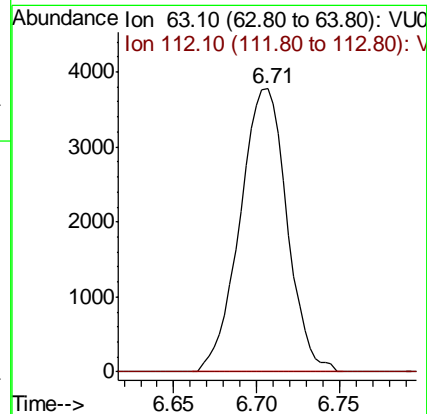
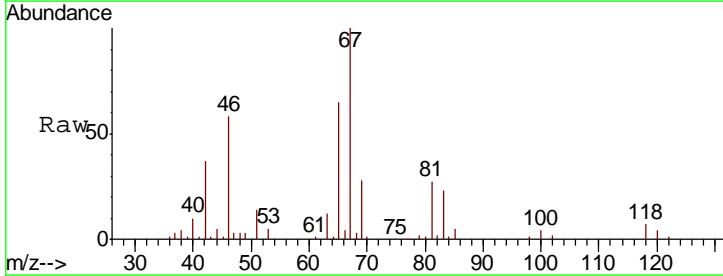
Instrument :  
 MSVOA\_U  
 ClientSampled :  
 ETZ10

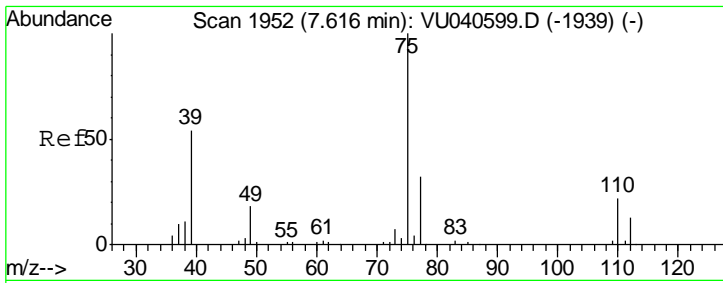
Tgt Ion	Resp	Lower	Upper
83	14127		
55	0.0	70.7	106.1#
98	1.0	38.4	57.6#



#37  
 1,2-Dichloropropane  
 Concen: 0.617 ug/L  
 RT: 6.71 min Scan# 1669  
 Delta R.T. -0.10 min  
 Lab File: VU040618.D  
 Acq: 10 Oct 2020 05:10

Tgt Ion	Resp	Lower	Upper
63	7454		
112	0.0	3.5	5.3#

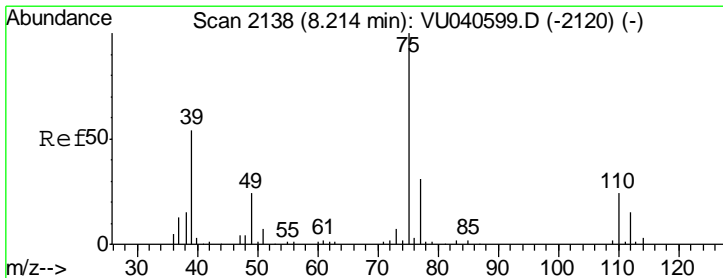
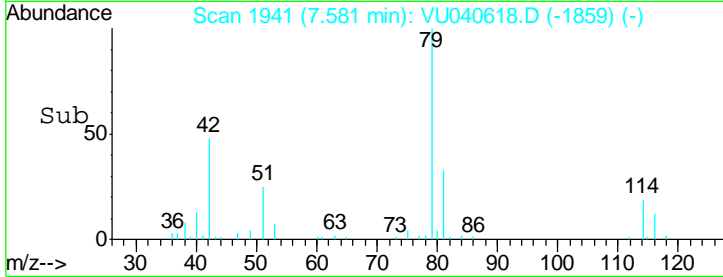
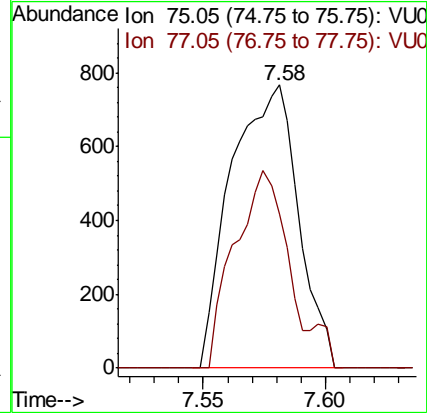
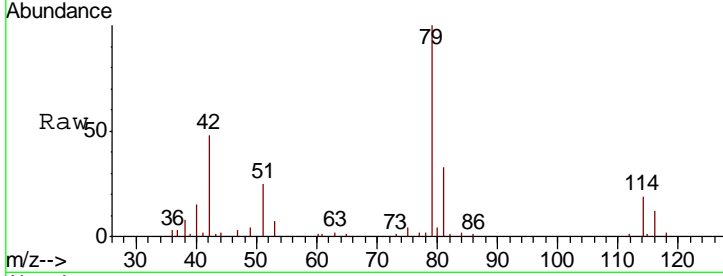




#39  
 cis-1,3-Dichloropropene  
 Concen: 0.089 ug/L  
 RT: 7.58 min Scan# 1941  
 Delta R.T. -0.04 min  
 Lab File: VU040618.D  
 Acq: 10 Oct 2020 05:10

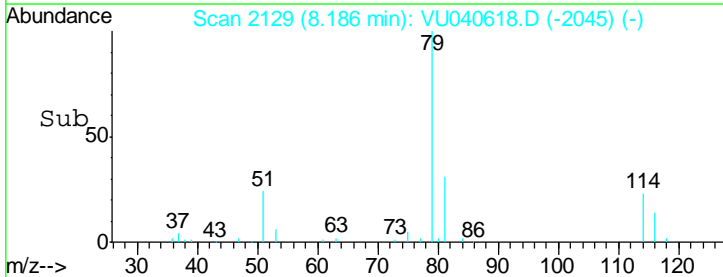
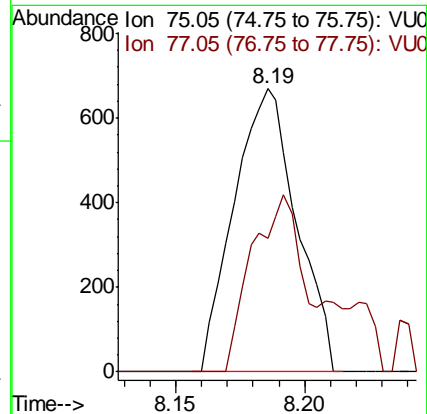
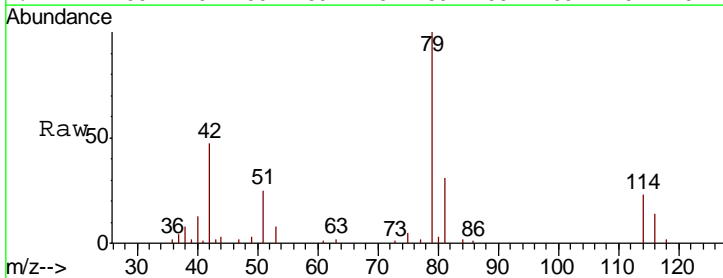
Instrument :  
 MSVOA\_U  
 ClientSampled :  
 ETZ10

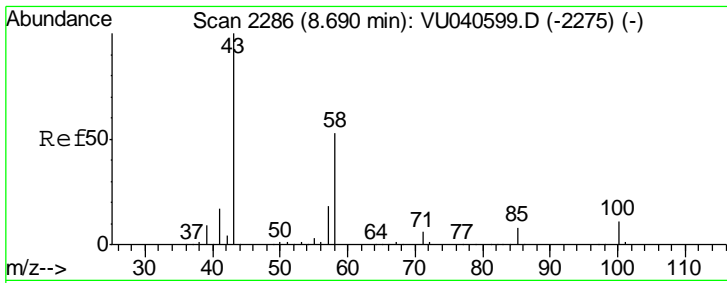
Tgt Ion: 75 Resp: 1465  
 Ion Ratio Lower Upper  
 75 100  
 77 54.6 20.5 38.1#



#44  
 trans-1,3-Dichloropropene  
 Concen: 0.075 ug/L  
 RT: 8.19 min Scan# 2129  
 Delta R.T. -0.03 min  
 Lab File: VU040618.D  
 Acq: 10 Oct 2020 05:10

Tgt Ion: 75 Resp: 1133  
 Ion Ratio Lower Upper  
 75 100  
 77 47.1 20.4 38.0#

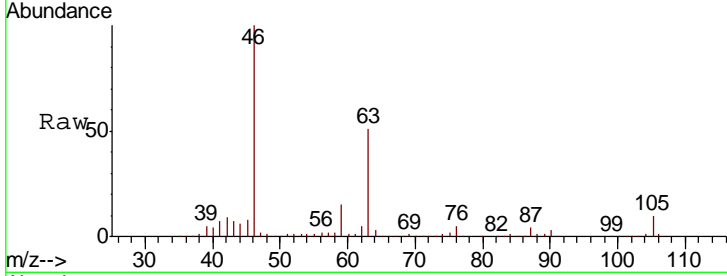




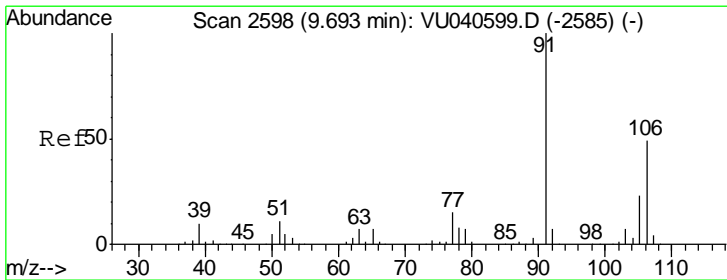
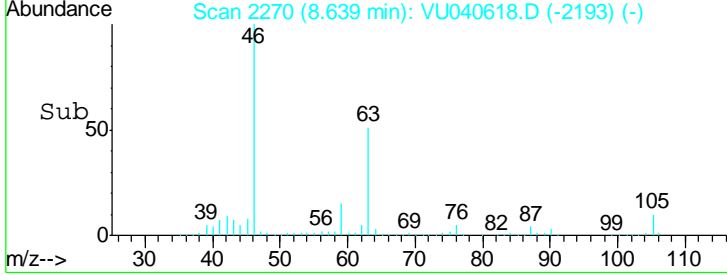
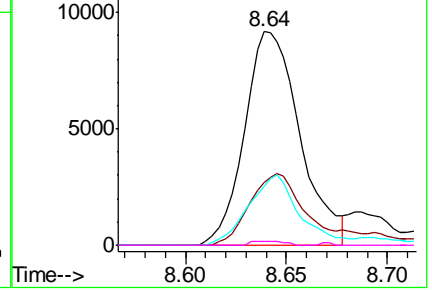
#48  
 2-Hexanone  
 Concen: 2.467 ug/L  
 RT: 8.64 min Scan# 2270  
 Delta R.T. -0.05 min  
 Lab File: VU040618.D  
 Acq: 10 Oct 2020 05:10

Instrument : MSVOA\_U  
 ClientSampled : ETZ10

Tgt Ion	Resp	Lower	Upper
43	17701		
58	34.7	41.0	61.6#
57	30.6	14.4	21.6#
100	1.2	8.6	13.0#

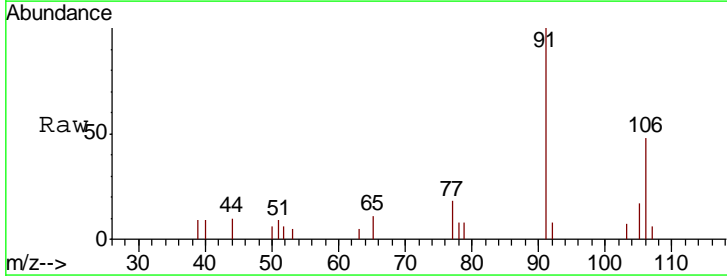


Abundance Ion 43.05 (42.75 to 43.75): VU040618.D (-2193) (-)  
 Ion 58.05 (57.75 to 58.75): VU040618.D (-2193) (-)  
 Ion 57.20 (56.90 to 57.90): VU040618.D (-2193) (-)  
 Ion 100.15 (99.85 to 100.85): VU040618.D (-2193) (-)

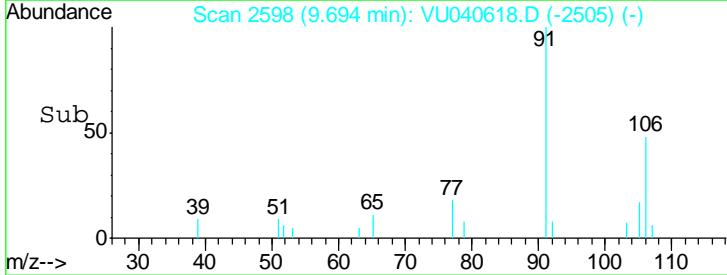
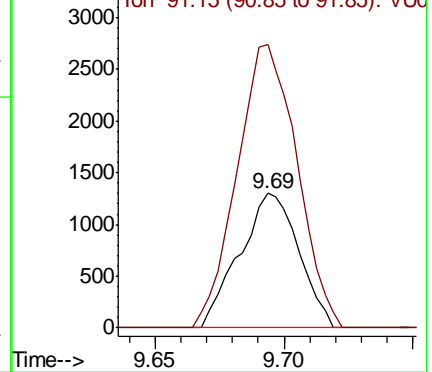


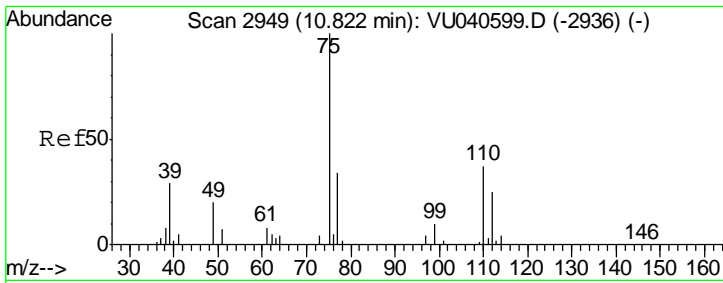
#53  
 m,p-Xylene  
 Concen: 0.119 ug/L  
 RT: 9.69 min Scan# 2598  
 Delta R.T. 0.00 min  
 Lab File: VU040618.D  
 Acq: 10 Oct 2020 05:10

Tgt Ion	Resp	Lower	Upper
106	2082		
91	210.2	148.5	275.7



Abundance Ion 106.15 (105.85 to 106.85): VU040618.D (-2505) (-)  
 Ion 91.15 (90.85 to 91.85): VU040618.D (-2505) (-)





#59  
 1,2,3-Trichloropropane  
 Concen: 0.812 ug/L  
 RT: 11.81 min Scan# 3255  
 Delta R.T. 0.98 min  
 Lab File: VU040618.D  
 Acq: 10 Oct 2020 05:10

Instrument : MSVOA\_U  
 ClientSampled : ETZ10

Tot Ion: 75 Resp: 7208

Ion	Ratio	Lower	Upper
75	100		
77	41.4	26.4	39.6#

