

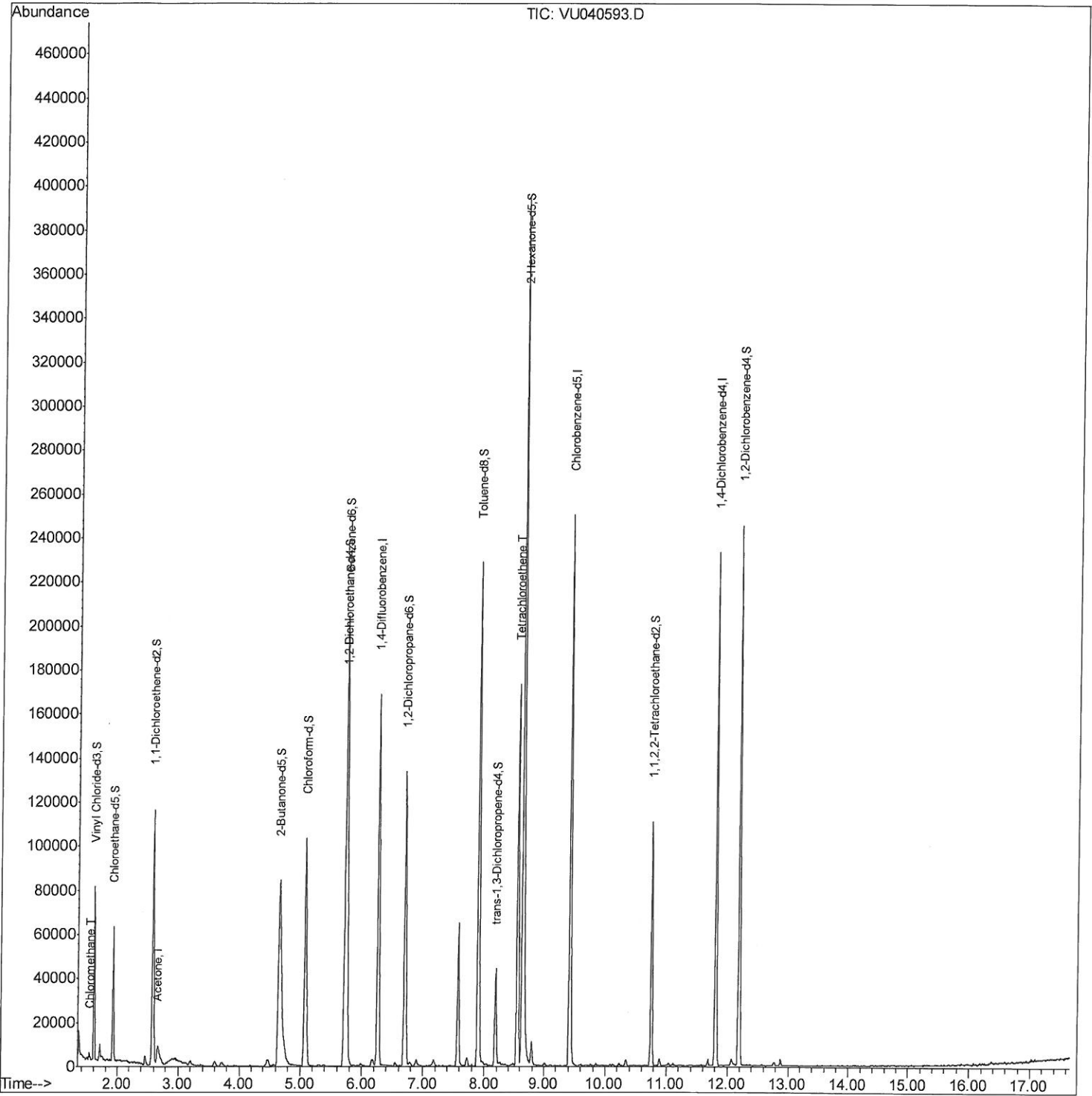
Data Path : Z:\VOASRV\HPCHEM1\MSVOA U\DATA\VU100920\
 Data File : VU040593.D
 Acq On : 09 Oct 2020 18:48
 Operator : SY/MD
 Sample : L4349-05
 Misc : 25.0mL/MSVOA U/WATER
 ALS Vial : 19 Sample Multiplier: 1

Instrument :
 MSVOA_U
 ClientSampled :
 BFSE2

Manual Integrations
 APPROVED

MMDadoda
 10/12/2020 11:51:01 AM

Quant Time: Oct 10 05:37:46 2020
 Quant Method : Z:\VOASRV\HPCHEM1\MSVOA_U\METHOD\SOMUTR100820WMA.M
 Quant Title : TRACE VOA SOM01.0
 QLast Update : Sat Oct 10 04:13:39 2020
 Response via : Initial Calibration



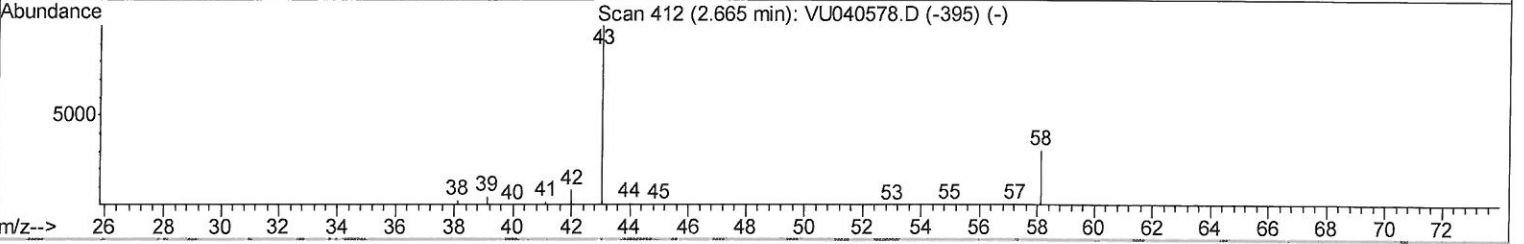
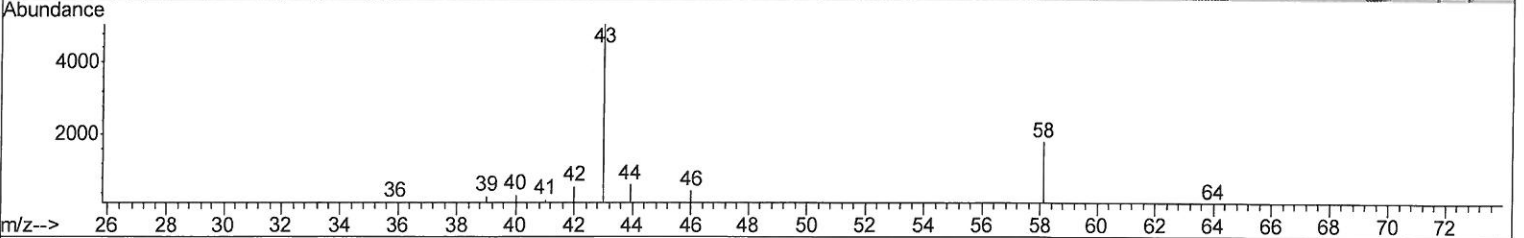
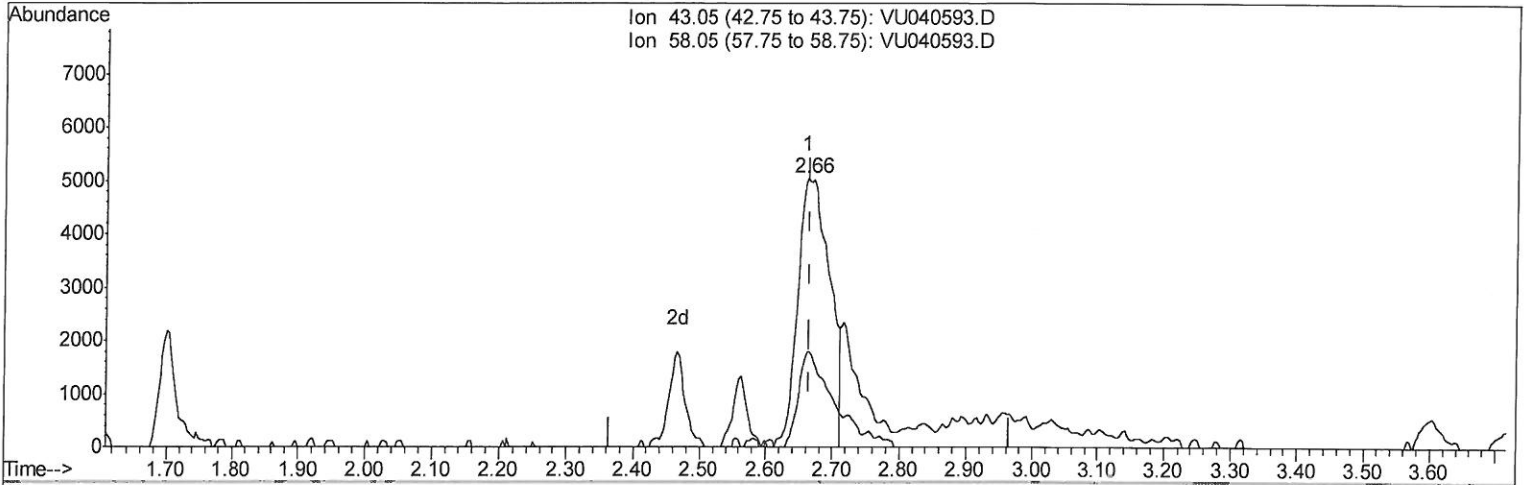
Quantitation Report (Qedit)

Data Path : Z:\VOASRV\HPCHEM1\MSVOA U\DATA\VU100920\
 Data File : VU040593.D
 Acq On : 09 Oct 2020 18:48
 Operator : SY/MD
 Sample : L4349-05
 Misc : 25.0mL/MSVOA U/WATER
 ALS Vial : 19 Sample Multiplier: 1

Instrument :
 MSVOA_U
ClientSampled :
 BFSE2

Manual Integrations
APPROVED
 MMDadoda
 10/12/2020 11:51:01 AM

Quant Time: Oct 10 04:23:19 2020
 Quant Method : Z:\VOASRV\HPCHEM1\MSVOA_U\METHOD\SOMUTR100820WMA.M
 Quant Title : TRACE VOA SOM01.0
 QLast Update : Sat Oct 10 04:13:39 2020
 Response via : Initial Calibration



TIC: VU040593.D

(13) Acetone (T)
 2.662min (-0.003) 6.48ug/L
 response 16596

Ion	Exp%	Act%
43.05	100	100
58.05	30.30	32.98
0.00	0.00	0.00
0.00	0.00	0.00

Quantitation Report (Qedit)

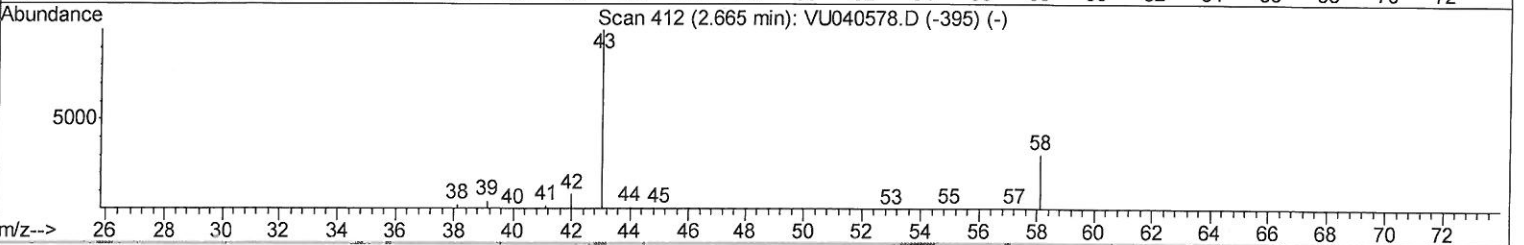
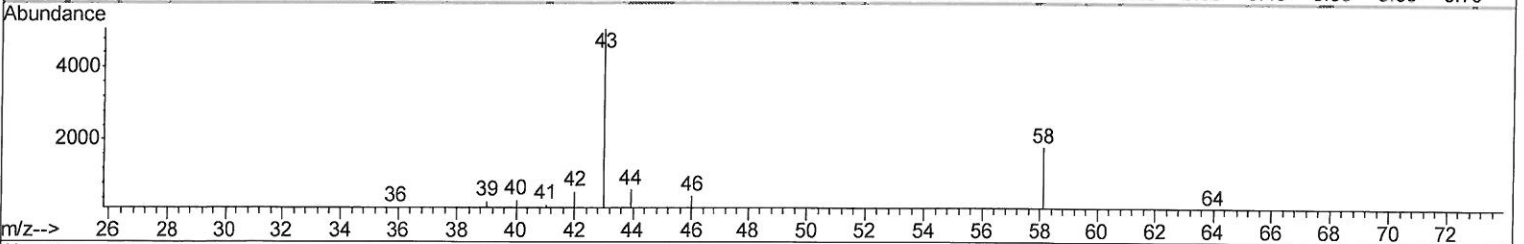
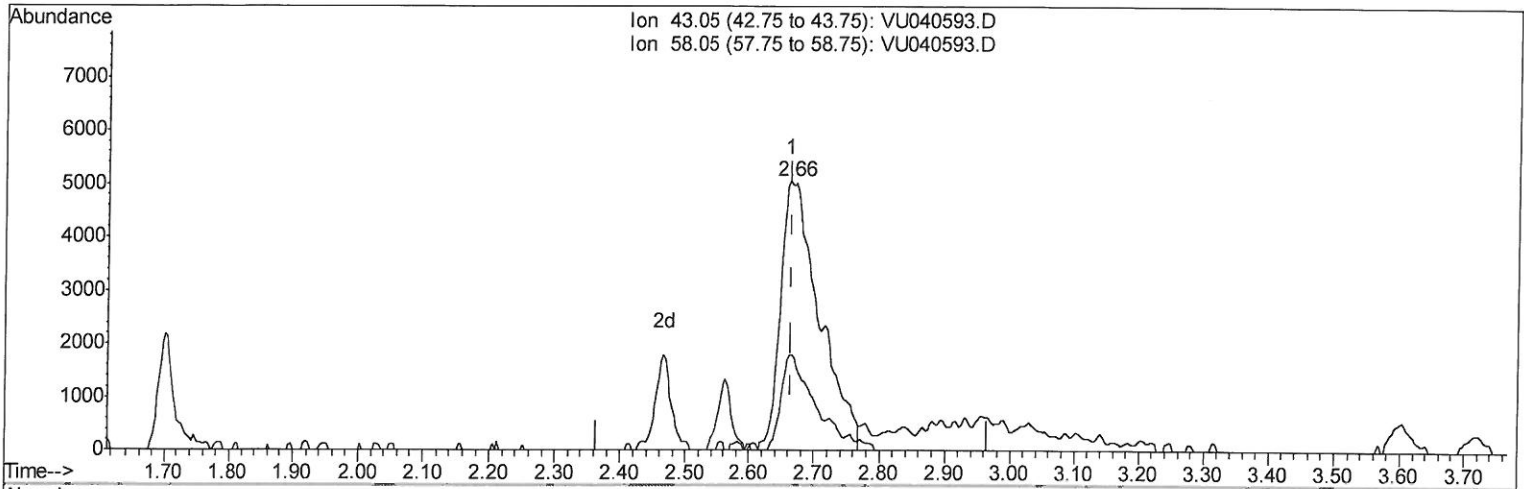
Data Path : Z:\VOASRV\HPCHEM1\MSVOA U\DATA\VU100920\
 Data File : VU040593.D
 Acq On : 09 Oct 2020 18:48
 Operator : SY/MD
 Sample : L4349-05
 Misc : 25.0mL/MSVOA U/WATER
 ALS Vial : 19 Sample Multiplier: 1

Instrument :
 MSVOA_U
 ClientSampled :
 BFSE2

Manual Integrations
 APPROVED

MMDadoda
 10/12/2020 11:51:01 AM

Quant Time: Oct 10 04:23:19 2020
 Quant Method : Z:\VOASRV\HPCHEM1\MSVOA_U\METHOD\SOMUTR100820WMA.M
 Quant Title : TRACE VOA SOM01.0
 QLast Update : Sat Oct 10 04:13:39 2020
 Response via : Initial Calibration



TIC: VU040593.D

(13) Acetone (T)

2.662min (-0.003) 8.19ug/L m *2.10/15/20 Sy*

response 20988

Ion	Exp%	Act%
43.05	100	100
58.05	30.30	26.08
0.00	0.00	0.00
0.00	0.00	0.00

Data Path : Z:\VOASRV\HPCHEM1\MSVOA U\DATA\VU100920\
 Data File : VU040593.D
 Acq On : 09 Oct 2020 18:48
 Operator : SY/MD
 Sample : L4349-05
 Misc : 25.0mL/MSVOA U/WATER
 ALS Vial : 19 Sample Multiplier: 1

Instrument :
 MSVOA_U
 ClientSampled :
 BFSE2

Manual Integrations
 APPROVED

MMDadoda
 10/12/2020 11:51:01 AM

Quant Time: Oct 10 05:37:46 2020
 Quant Method : Z:\VOASRV\HPCHEM1\MSVOA_U\METHOD\SOMUTR100820WMA.M
 Quant Title : TRACE VOA SOM01.0
 QLast Update : Sat Oct 10 04:13:39 2020
 Response via : Initial Calibration

Internal Standards	R.T.	QIon	Response	Conc	Units	Dev(Min)
1) 1,4-Difluorobenzene	6.26	114	124686	5.00	ug/L	0.00
28) Chlorobenzene-d5	9.42	117	129366	5.00	ug/L	0.00
60) 1,4-Dichlorobenzene-d4	11.81	152	58539	5.00	ug/L	0.00

System Monitoring Compounds

4) Vinyl Chloride-d3	1.60	65	48621	4.71	ug/L	0.00
Spiked Amount	5.000	Range	40 - 130	Recovery	=	94.20%
7) Chloroethane-d5	1.92	69	40250	5.05	ug/L	0.00
Spiked Amount	5.000	Range	65 - 130	Recovery	=	101.00%
11) 1,1-Dichloroethene-d2	2.58	63	70538	3.49	ug/L	0.00
Spiked Amount	5.000	Range	60 - 125	Recovery	=	69.80%
20) 2-Butanone-d5	4.66	46	187339	56.66	ug/L	0.00
Spiked Amount	50.000	Range	40 - 130	Recovery	=	113.32%
24) Chloroform-d	5.08	84	91903	5.07	ug/L	0.00
Spiked Amount	5.000	Range	70 - 125	Recovery	=	101.40%
26) 1,2-Dichloroethane-d4	5.72	65	56631	5.13	ug/L	0.00
Spiked Amount	5.000	Range	70 - 130	Recovery	=	102.60%
32) Benzene-d6	5.74	84	175898	5.04	ug/L	0.00
Spiked Amount	5.000	Range	70 - 125	Recovery	=	100.80%
36) 1,2-Dichloropropane-d6	6.70	67	60046	5.18	ug/L	0.00
Spiked Amount	5.000	Range	60 - 140	Recovery	=	103.60%
41) Toluene-d8	7.91	98	144981	4.64	ug/L	0.00
Spiked Amount	5.000	Range	70 - 130	Recovery	=	92.80%
43) trans-1,3-Dichloropropene-	8.19	79	23782	4.85	ug/L	0.00
Spiked Amount	5.000	Range	55 - 130	Recovery	=	97.00%
46) 2-Hexanone-d5	8.64	63	133023	52.61	ug/L	0.00
Spiked Amount	50.000	Range	45 - 130	Recovery	=	105.22%
57) 1,1,2,2-Tetrachloroethane-	10.75	84	52106	5.01	ug/L	0.00
Spiked Amount	5.000	Range	65 - 120	Recovery	=	100.20%
64) 1,2-Dichlorobenzene-d4	12.19	152	59717	5.50	ug/L	0.00
Spiked Amount	5.000	Range	80 - 120	Recovery	=	110.00%

Target Compounds

3) Chloromethane	1.53	50	1869	0.177	ug/L	93
13) Acetone	2.66	43	20988m	8.190	ug/L	93
47) Tetrachloroethene	8.56	164	36642	4.767	ug/L	95

10/15/2020 SY

(#) = qualifier out of range (m) = manual integration (+) = signals summed