

Data Path : Z:\VOASRV\HPCHEM1\MSVOA U\DATA\VU100920\
 Data File : VU040613.D
 Acq On : 10 Oct 2020 03:15
 Operator : SY/MD
 Sample : L4352-10
 Misc : 25.0mL/MSVOA U/WATER
 ALS Vial : 41 Sample Multiplier: 1

Instrument :
 MSVOA_U
 ClientSampled :
 ETZ00

Integration Parameters: rteint.p
 Integrator: RTE
 Smoothing : ON Filtering: 5
 Sampling : 1 Min Area: 3 % of largest Peak
 Start Thrs: 0.1 Max Peaks: 100
 Stop Thrs : 0 Peak Location: TOP

If leading or trailing edge < 100 prefer < Baseline drop else tangent >
 Peak separation: 5

Method : Z:\VOASRV\HPCHEM1\MSVOA_U\METHOD\SOMUTR100820WMA.M
 Title : TRACE VOA SOM01.0

Signal : TIC

peak #	R.T. min	first scan	max scan	last scan	PK TY	peak height	corr. area	corr. % max.	% of total
1	1.366	3	8	15	rBV	23565	22313	2.97%	0.452%
2	1.543	39	63	68	rBV2	22632	65001	8.65%	1.316%
3	1.607	76	83	97	rVB	82008	101551	13.52%	2.057%
4	1.922	174	181	194	rVB	59284	78993	10.52%	1.600%
5	2.581	372	386	401	rBV	120360	195724	26.06%	3.964%
6	4.678	1015	1038	1084	rBV4	98439	401389	53.44%	8.129%
7	5.083	1148	1164	1186	rBV2	105571	234279	31.19%	4.745%
8	5.742	1348	1369	1395	rBV2	211520	551908	73.48%	11.178%
9	6.263	1517	1531	1548	rBV2	174648	322236	42.90%	6.526%
10	6.703	1654	1668	1688	rBV2	136581	264168	35.17%	5.350%
11	7.575	1927	1939	1957	rBV2	63153	111882	14.90%	2.266%
12	7.906	2026	2042	2057	rBV	233081	397796	52.96%	8.056%
13	8.185	2118	2129	2142	rBV2	42435	72199	9.61%	1.462%
14	8.642	2257	2271	2313	rBV	392241	751109	100.00%	15.212%
15	9.420	2500	2513	2536	rBV	252285	422032	56.19%	8.547%
16	9.693	2588	2598	2611	rVB2	8621	14543	1.94%	0.295%
17	10.755	2915	2928	2942	rVB	114092	182564	24.31%	3.697%
18	11.806	3243	3255	3270	rBV	228862	364427	48.52%	7.381%
19	12.189	3360	3374	3388	rBV	235123	383482	51.06%	7.767%

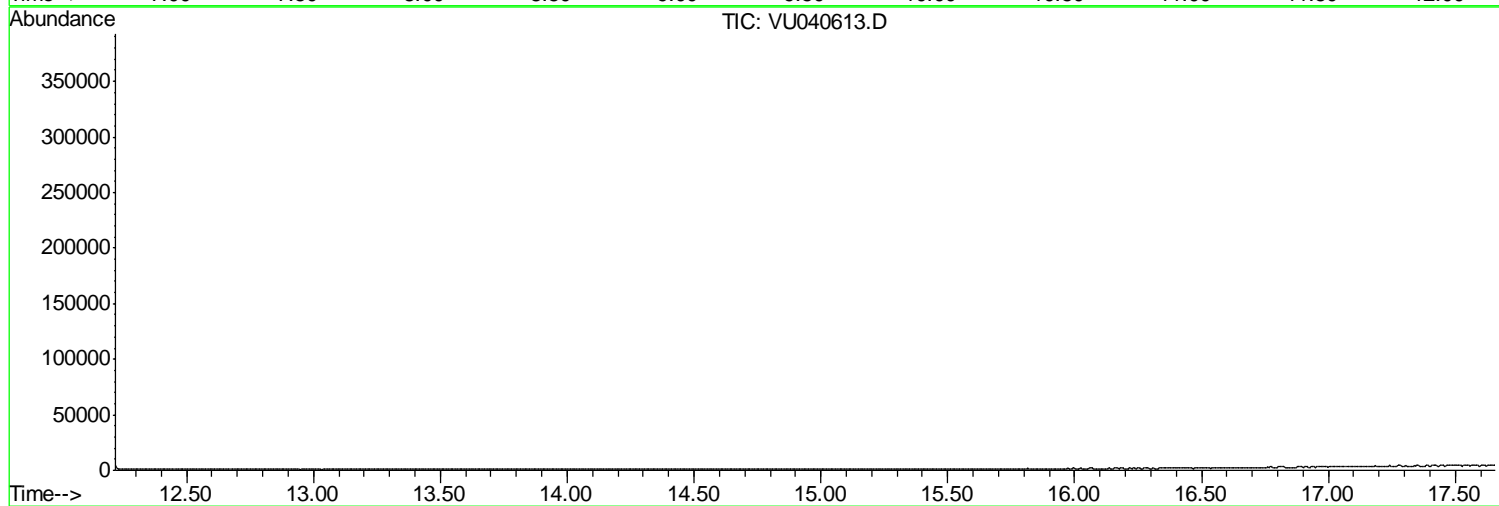
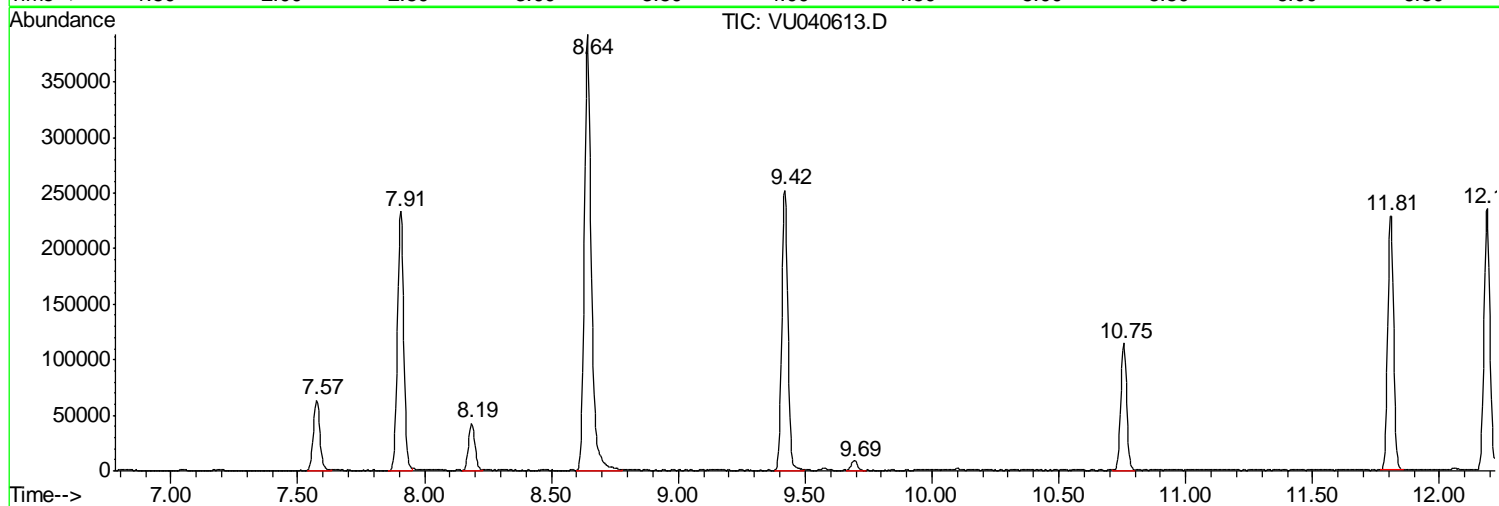
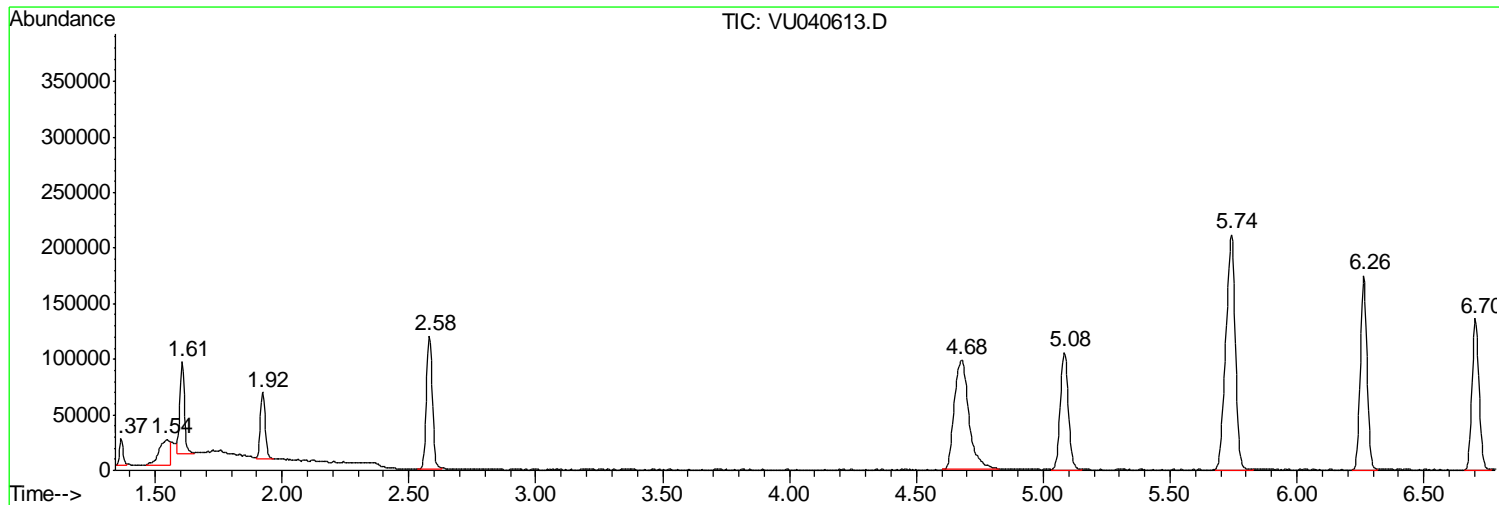
Sum of corrected areas: 4937596

Data Path : Z:\VOASRV\HPCHEM1\MSVOA U\DATA\VU100920\
Data File : VU040613.D
Acq On : 10 Oct 2020 03:15
Operator : SY/MD
Sample : L4352-10
Misc : 25.0mL/MSVOA U/WATER
ALS Vial : 41 Sample Multiplier: 1

Instrument :
MSVOA_U
ClientSampled :
ETZ00

Quant Method : Z:\VOASRV\HPCHEM1\MSVOA_U\METHOD\SOMUTR100820WMA.M
Quant Title : TRACE VOA SOM01.0

TIC Library : C:\DATABASE\NIST11.L
TIC Integration Parameters: LSCINT.P



Data Path : Z:\VOASRV\HPCHEM1\MSVOA U\DATA\VU100920\
 Data File : VU040613.D
 Acq On : 10 Oct 2020 03:15
 Operator : SY/MD
 Sample : L4352-10
 Misc : 25.0mL/MSVOA U/WATER
 ALS Vial : 41 Sample Multiplier: 1

Instrument :
 MSVOA_U
 ClientSampleID :
 ETZ00

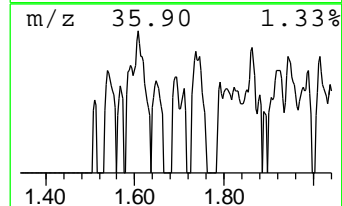
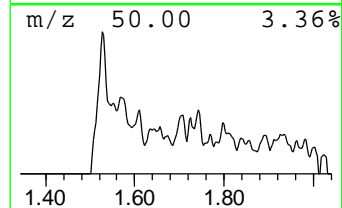
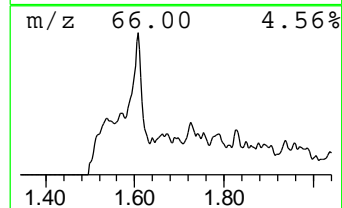
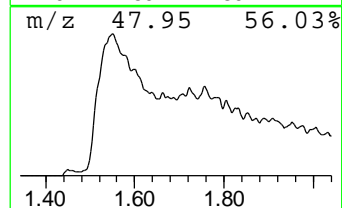
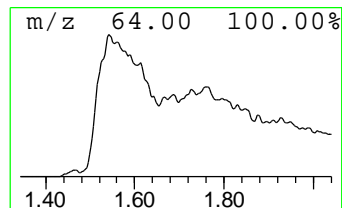
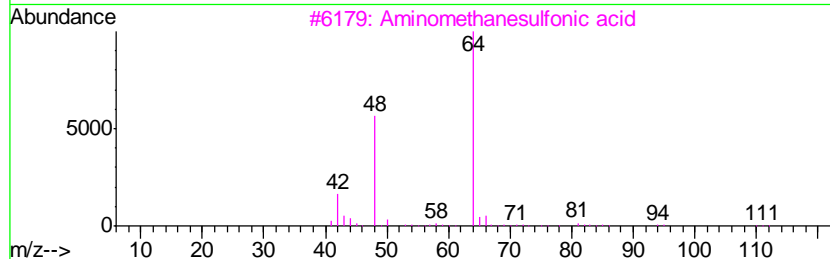
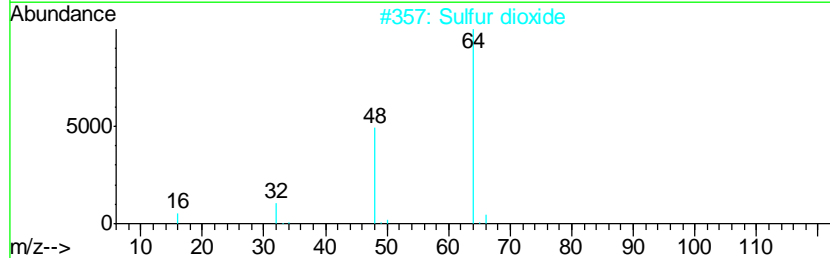
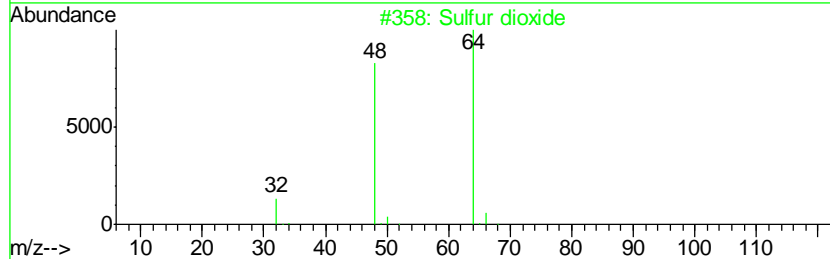
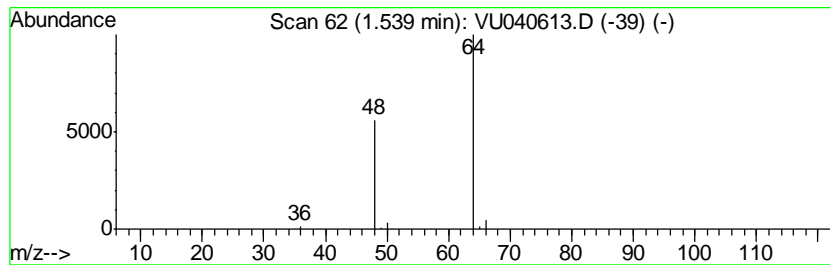
Quant Method : Z:\VOASRV\HPCHEM1\MSVOA_U\METHOD\SOMUTR100820WMA.M
 Quant Title : TRACE VOA SOM01.0

TIC Library : C:\DATABASE\NIST11.L
 TIC Integration Parameters: LSCINT.P

 Peak Number 1 Sulfur dioxide Concentration Rank 2

R.T.	EstConc	Area	Relative to ISTD	R.T.
1.54	1.01 ug/L	65001	1,4-Difluorobenzene	6.26

Hit#	of	Tentative ID	MW	MolForm	CAS#	Qual
1	5	Sulfur dioxide	64	O2S	007446-09-5	83
2		Sulfur dioxide	64	O2S	007446-09-5	83
3		Aminomethanesulfonic acid	111	CH5NO3S	013881-91-9	9
4		Aminomethanesulfonic acid	111	CH5NO3S	013881-91-9	9
5		Ethene, 1,1-difluoro-	64	C2H2F2	000075-38-7	4



Data Path : Z:\VOASRV\HPCHEM1\MSVOA_U\DATA\VU100920\
Data File : VU040613.D
Acq On : 10 Oct 2020 03:15
Operator : SY/MD
Sample : L4352-10
Misc : 25.0mL/MSVOA_U/WATER
ALS Vial : 41 Sample Multiplier: 1

Instrument :
MSVOA_U
ClientSampleId :
ETZ00

Quant Method : Z:\VOASRV\HPCHEM1\MSVOA_U\METHOD\SOMUTR100820WMA.M
Quant Title : TRACE VOA SOM01.0

TIC Library : C:\DATABASE\NIST11.L
TIC Integration Parameters: LSCINT.P

TIC Top Hit name	RT	EstConc	Units	Response	--Internal Standard--			
					#	RT	Resp	Conc
Sulfur dioxide	1.54	1.0	ug/L	65001	1	6.26	322236	5.0