

Data Path : Z:\VOASRV\HPCHEM1\MSVOA U\DATA\VU100920\
 Data File : VU040618.D
 Acq On : 10 Oct 2020 05:10
 Operator : SY/MD
 Sample : L4352-18
 Misc : 25.0mL/MSVOA U/WATER
 ALS Vial : 46 Sample Multiplier: 1

Instrument :
 MSVOA_U
 ClientSampleId :
 ETZ10

Integration Parameters: rteint.p
 Integrator: RTE
 Smoothing : ON
 Sampling : 1
 Start Thrs: 0.1
 Stop Thrs : 0

Filtering: 5
 Min Area: 3 % of largest Peak
 Max Peaks: 100
 Peak Location: TOP

If leading or trailing edge < 100 prefer < Baseline drop else tangent >
 Peak separation: 5

Method : Z:\VOASRV\HPCHEM1\MSVOA_U\METHOD\SOMUTR100820WMA.M
 Title : TRACE VOA SOM01.0

Signal : TIC

peak #	R.T. min	first scan	max scan	last scan	PK TY	peak height	corr. area	corr. % max.	% of total
1	1.562	55	69	70	rBV3	7301	12539	1.70%	0.264%
2	1.604	75	82	91	rVB	72125	82938	11.26%	1.748%
3	1.922	173	181	198	rVB	60247	79482	10.79%	1.675%
4	2.581	374	386	404	rBV	119487	196402	26.66%	4.140%
5	4.662	1015	1033	1085	rBV	78631	303444	41.19%	6.396%
6	5.083	1147	1164	1185	rBV2	103568	235499	31.97%	4.964%
7	5.742	1347	1369	1388	rBV2	208865	547511	74.33%	11.540%
8	6.263	1517	1531	1549	rBV	175666	329948	44.79%	6.954%
9	6.703	1654	1668	1688	rBV	137150	265478	36.04%	5.596%
10	7.575	1927	1939	1953	rBV	64195	112275	15.24%	2.366%
11	7.906	2026	2042	2060	rBV	233156	398716	54.13%	8.404%
12	8.186	2117	2129	2143	rBV	43529	72934	9.90%	1.537%
13	8.642	2257	2271	2309	rBV	389869	736632	100.00%	15.526%
14	9.420	2500	2513	2529	rBV	259587	429389	58.29%	9.050%
15	9.694	2589	2598	2608	rVB3	7523	11479	1.56%	0.242%
16	10.755	2915	2928	2943	rBV	111121	177195	24.05%	3.735%
17	11.806	3242	3255	3270	rBV	233108	373850	50.75%	7.880%
18	12.189	3361	3374	3389	rBV	231945	378765	51.42%	7.983%

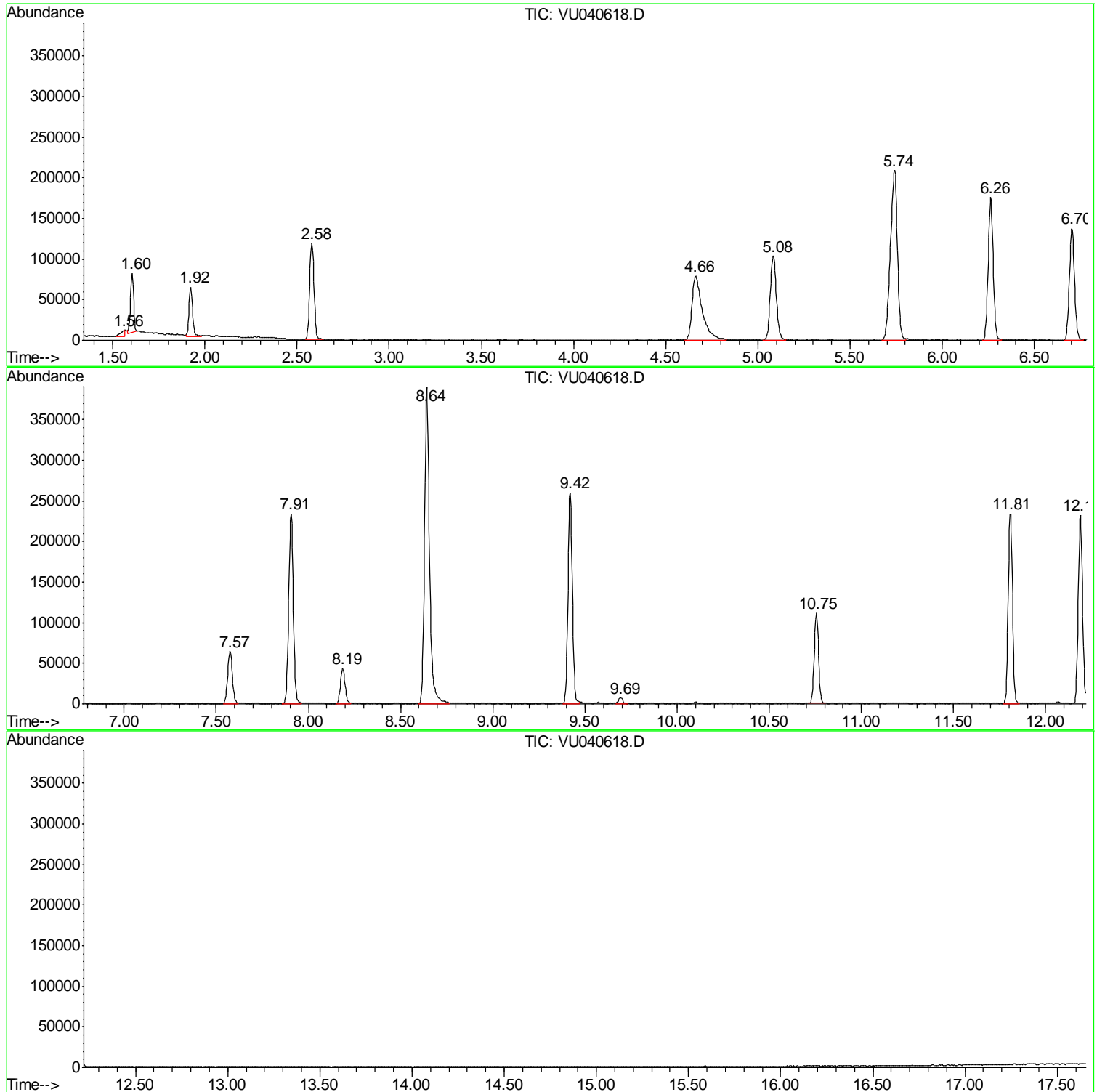
Sum of corrected areas: 4744476

Data Path : Z:\VOASRV\HPCHEM1\MSVOA U\DATA\VU100920\
Data File : VU040618.D
Acq On : 10 Oct 2020 05:10
Operator : SY/MD
Sample : L4352-18
Misc : 25.0mL/MSVOA U/WATER
ALS Vial : 46 Sample Multiplier: 1

Instrument :
MSVOA_U
ClientSampled :
ETZ10

Quant Method : Z:\VOASRV\HPCHEM1\MSVOA_U\METHOD\SOMUTR100820WMA.M
Quant Title : TRACE VOA SOM01.0

TIC Library : C:\DATABASE\NIST11.L
TIC Integration Parameters: LSCINT.P



Data Path : Z:\VOASRV\HPCHEM1\MSVOA_U\DATA\VU100920\
Data File : VU040618.D
Acq On : 10 Oct 2020 05:10
Operator : SY/MD
Sample : L4352-18
Misc : 25.0mL/MSVOA_U/WATER
ALS Vial : 46 Sample Multiplier: 1

Instrument :
MSVOA_U
ClientSampleId :
ETZ10

Quant Method : Z:\VOASRV\HPCHEM1\MSVOA_U\METHOD\SOMUTR100820WMA.M
Quant Title : TRACE VOA SOM01.0

TIC Library : C:\DATABASE\NIST11.L
TIC Integration Parameters: LSCINT.P

No Library Search Compounds Detected

Data Path : Z:\VOASRV\HPCHEM1\MSVOA_U\DATA\VU100920\
Data File : VU040618.D
Acq On : 10 Oct 2020 05:10
Operator : SY/MD
Sample : L4352-18
Misc : 25.0mL/MSVOA_U/WATER
ALS Vial : 46 Sample Multiplier: 1

Instrument :
MSVOA_U
ClientSampleId :
ETZ10

Quant Method : Z:\VOASRV\HPCHEM1\MSVOA_U\METHOD\SOMUTR100820WMA.M
Quant Title : TRACE VOA SOM01.0

TIC Library : C:\DATABASE\NIST11.L
TIC Integration Parameters: LSCINT.P

TIC Top Hit name	RT	EstConc	Units	Response	--Internal Standard--			
					#	RT	Resp	Conc
