

Data Path : Z:\voasrv\HPCHEM1\MSVOA_U\Data\VU101022\
 Data File : VU051357.D
 Acq On : 11 Oct 2022 04:09
 Operator : JC/MD
 Sample : N5071-13
 Misc : 25.0mL/MSVOA_U/WATER
 ALS Vial : 46 Sample Multiplier: 1

Instrument :
 MSVOA_U
 ClientSampleId :

Quant Time: Oct 11 05:59:03 2022
 Quant Method : Z:\voasrv\HPCHEM1\MSVOA_U\Method\SFAMUTR100722WMA.M
 Quant Title : TRACE VOA SFAM1.0
 QLast Update : Tue Oct 11 02:38:56 2022
 Response via : Initial Calibration

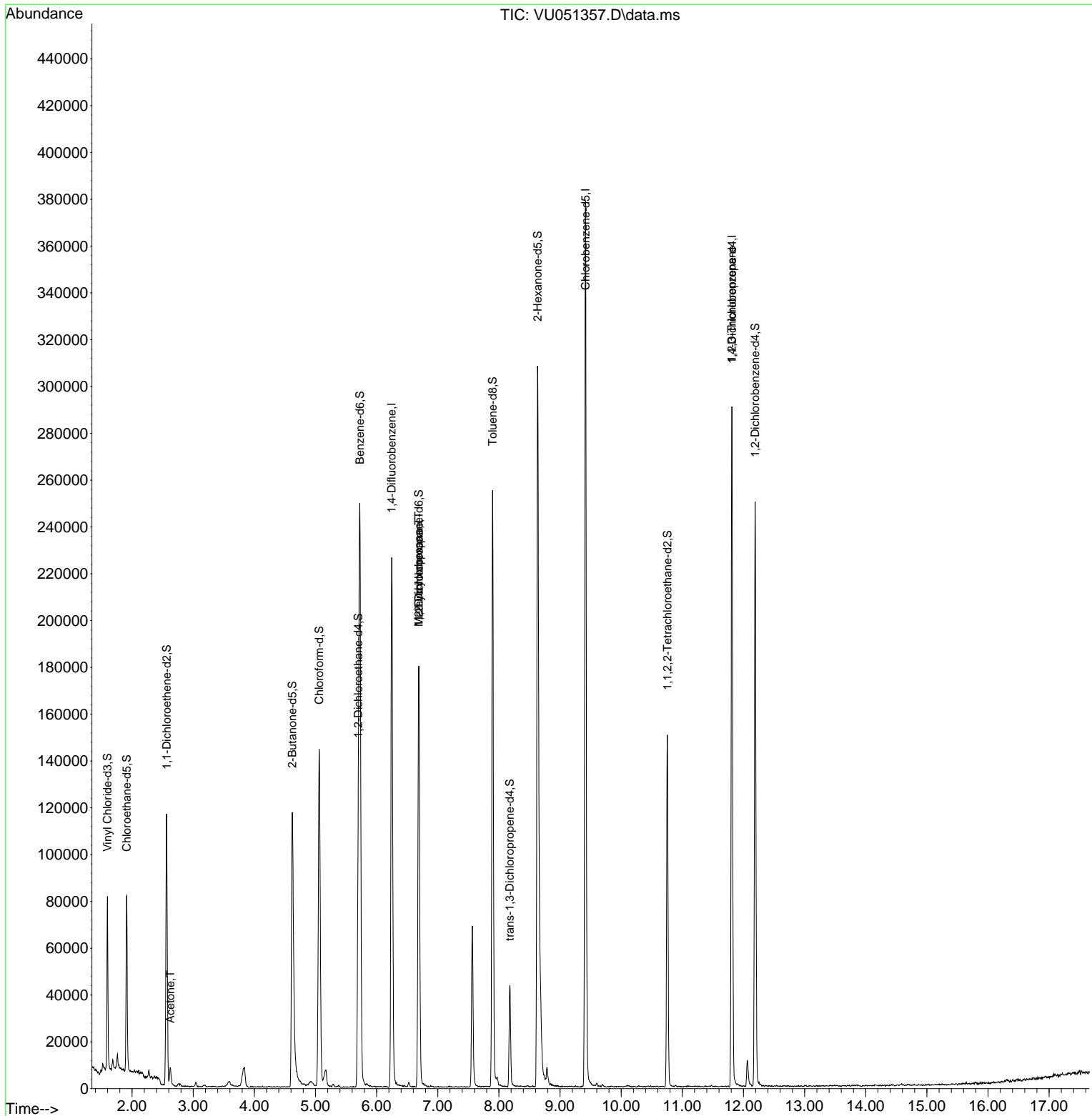
Compound	R.T.	QIon	Response	Conc	Units	Dev(Min)
Internal Standards						
1) 1,4-Difluorobenzene	6.247	114	183621	5.000	ug/L	0.00
28) Chlorobenzene-d5	9.417	117	212431	5.000	ug/L	0.00
58) 1,4-Dichlorobenzene-d4	11.812	152	79504	5.000	ug/L	0.00
System Monitoring Compounds						
4) Vinyl Chloride-d3	1.597	65	52126	3.519	ug/L	0.00
Spiked Amount	5.000	Range 40 - 130	Recovery	=	70.400%	
7) Chloroethane-d5	1.913	69	54946	4.317	ug/L	0.00
Spiked Amount	5.000	Range 65 - 130	Recovery	=	86.400%	
11) 1,1-Dichloroethene-d2	2.565	65	22021	3.761	ug/L	0.00
Spiked Amount	5.000	Range 60 - 125	Recovery	=	75.200%	
20) 2-Butanone-d5	4.620	46	170160	52.180	ug/L	0.00
Spiked Amount	50.000	Range 40 - 130	Recovery	=	104.360%	
24) Chloroform-d	5.060	84	137214	4.969	ug/L	0.00
Spiked Amount	5.000	Range 70 - 125	Recovery	=	99.400%	
26) 1,2-Dichloroethane-d4	5.700	65	73280	5.146	ug/L	0.00
Spiked Amount	5.000	Range 70 - 130	Recovery	=	103.000%	
32) Benzene-d6	5.726	84	233965	4.004	ug/L	0.00
Spiked Amount	5.000	Range 70 - 125	Recovery	=	80.000%	
36) 1,2-Dichloropropane-d6	6.690	67	88208	4.444	ug/L	0.00
Spiked Amount	5.000	Range 60 - 140	Recovery	=	88.800%	
41) Toluene-d8	7.896	98	174980	3.347	ug/L	0.00
Spiked Amount	5.000	Range 70 - 130	Recovery	=	67.000%#	
43) trans-1,3-Dichloroprop...	8.179	79	25264	3.875	ug/L	0.00
Spiked Amount	5.000	Range 55 - 130	Recovery	=	77.400%	
46) 2-Hexanone-d5	8.633	63	85743	39.016	ug/L	0.00
Spiked Amount	50.000	Range 45 - 130	Recovery	=	78.040%	
56) 1,1,2,2-Tetrachloroeth...	10.755	84	78332	4.941	ug/L	0.00
Spiked Amount	5.000	Range 65 - 120	Recovery	=	98.800%	
66) 1,2-Dichlorobenzene-d4	12.192	152	66415	4.806	ug/L	0.00
Spiked Amount	5.000	Range 80 - 120	Recovery	=	96.200%	
Target Compounds						
13) Acetone	2.626	43	8917	3.646	ug/L	98
35) Methylcyclohexane	6.687	83	20194	0.905	ug/L #	17
37) 1,2-Dichloropropane	6.687	63	9198	0.473	ug/L #	88
61) 1,2,3-Trichloropropane	11.809	75	9338	0.930	ug/L #	69

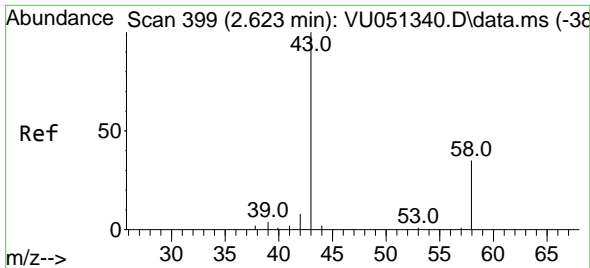
(#) = qualifier out of range (m) = manual integration (+) = signals summed

Data Path : Z:\voasrv\HPCHEM1\MSVOA_U\Data\VU101022\
 Data File : VU051357.D
 Acq On : 11 Oct 2022 04:09
 Operator : JC/MD
 Sample : N5071-13
 Misc : 25.0mL/MSVOA_U/WATER
 ALS Vial : 46 Sample Multiplier: 1

Instrument :
 MSVOA_U
 ClientSampleId :

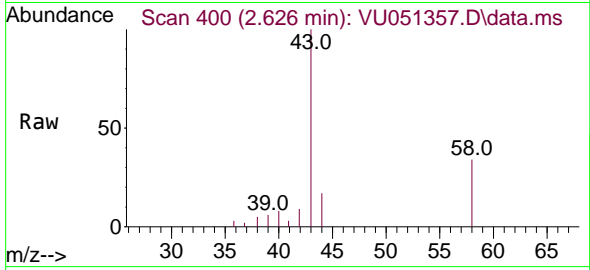
Quant Time: Oct 11 05:59:03 2022
 Quant Method : Z:\voasrv\HPCHEM1\MSVOA_U\Method\SFAMUTR100722WMA.M
 Quant Title : TRACE VOA SFAM1.0
 QLast Update : Tue Oct 11 02:38:56 2022
 Response via : Initial Calibration



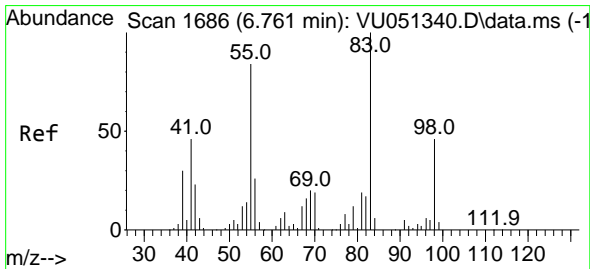
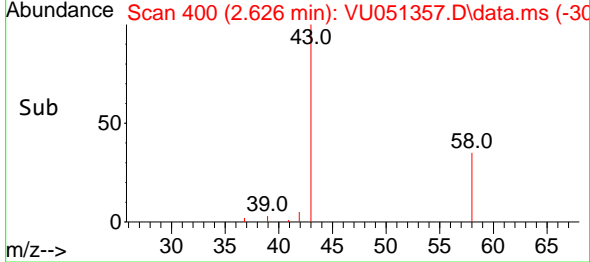
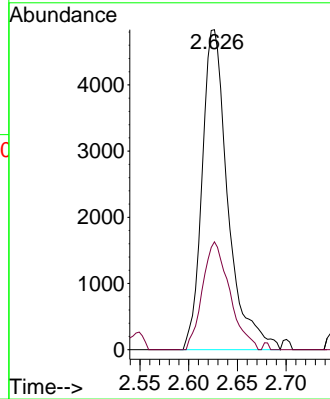


#13
 Acetone
 Concen: 3.646 ug/L
 RT: 2.626 min Scan# 400
 Delta R.T. 0.003 min
 Lab File: VU051357.D
 Acq: 11 Oct 2022 04:09

Instrument : MSVOA_U
 ClientSampleId :

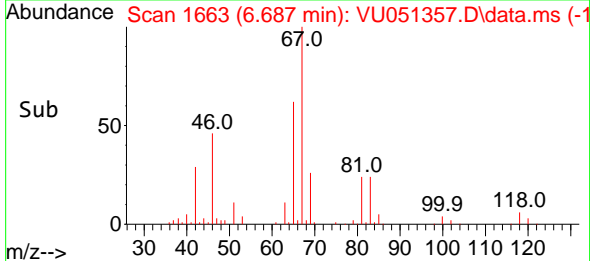
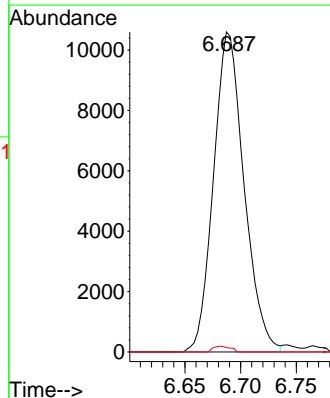
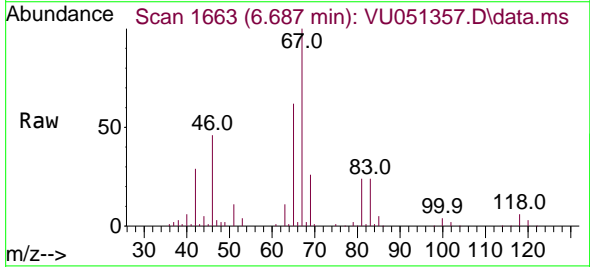


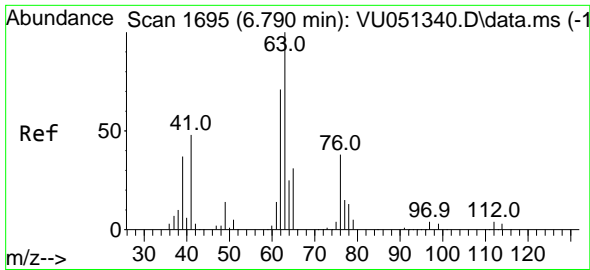
Tgt Ion: 43 Resp: 8917
 Ion Ratio Lower Upper
 43 100
 58 35.5 0.0 68.8



#35
 Methylcyclohexane
 Concen: 0.905 ug/L
 RT: 6.687 min Scan# 1663
 Delta R.T. -0.074 min
 Lab File: VU051357.D
 Acq: 11 Oct 2022 04:09

Tgt Ion: 83 Resp: 20194
 Ion Ratio Lower Upper
 83 100
 55 0.0 65.8 98.6#
 98 1.0 35.9 53.9#

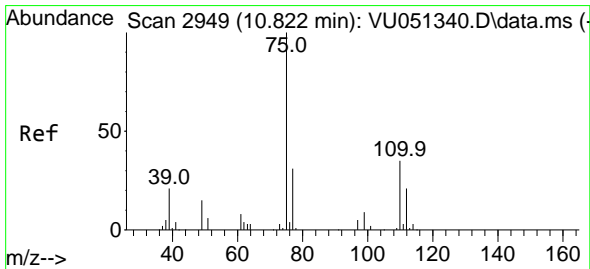
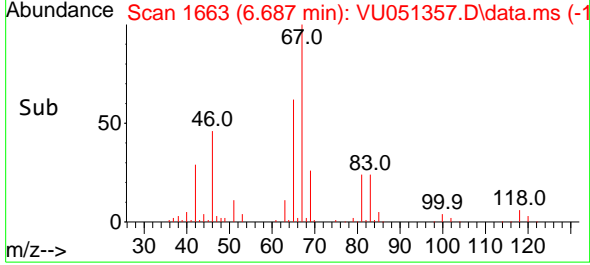
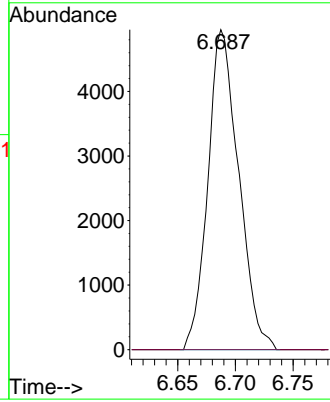
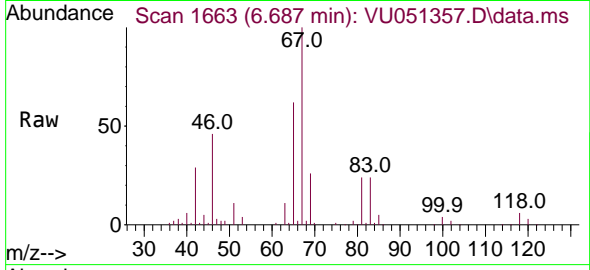




#37
 1,2-Dichloropropane
 Concen: 0.473 ug/L
 RT: 6.687 min Scan# 1
 Delta R.T. -0.103 min
 Lab File: VU051357.D
 Acq: 11 Oct 2022 04:09

Instrument :
 MSVOA_U
 ClientSampleId :

Tgt Ion: 63 Resp: 9198
 Ion Ratio Lower Upper
 63 100
 112 0.0 3.2 4.8#



#61
 1,2,3-Trichloropropane
 Concen: 0.930 ug/L
 RT: 11.809 min Scan# 3256
 Delta R.T. 0.987 min
 Lab File: VU051357.D
 Acq: 11 Oct 2022 04:09

Tgt Ion: 75 Resp: 9338
 Ion Ratio Lower Upper
 75 100
 110 0.8 27.0 40.6#
 77 34.9 26.4 39.6

