

Data Path : Z:\voasrv\HPCHEM1\MSVOA_U\Data\VU101022\
 Data File : VU051338.D
 Acq On : 10 Oct 2022 19:45
 Operator : JC/MD
 Sample : N5026-07
 Misc : 25.0mL/MSVOA_U/WATER
 ALS Vial : 26 Sample Multiplier: 1

Instrument :
 MSVOA_U
 ClientSampleId :
 C0BX5

Integration Parameters: rteint.p
 Integrator: RTE
 Smoothing : ON Filtering: 5
 Sampling : 1 Min Area: 3 % of largest Peak
 Start Thrs: 0.1 Max Peaks: 100
 Stop Thrs : 0 Peak Location: TOP

If leading or trailing edge < 100 prefer < Baseline drop else tangent >
 Peak separation: 5

Method : Z:\voasrv\HPCHEM1\MSVOA_U\Method\SFAMUTR100722WMA.M
 Title : TRACE VOA SFAM1.0

Signal : TIC: VU051338.D\data.ms

peak #	R.T. min	first scan	max scan	last scan	PK TY	peak height	corr. area	corr. % max.	% of total
1	1.597	73	80	92	rBV	72194	79147	11.38%	1.418%
2	1.912	169	178	189	rBV	74452	96603	13.89%	1.731%
3	2.565	369	381	393	rBV	119158	191365	27.51%	3.429%
4	2.623	393	399	413	rVB2	9662	17575	2.53%	0.315%
5	2.758	430	441	448	rBV	8490	14756	2.12%	0.264%
6	3.845	755	779	791	rBV	10030	34794	5.00%	0.623%
7	4.620	1007	1020	1051	rBV	111213	287221	41.29%	5.147%
8	5.063	1141	1158	1176	rBV	145576	325096	46.73%	5.825%
9	5.173	1178	1192	1207	rVB	8594	26206	3.77%	0.470%
10	5.726	1338	1364	1385	rBV2	249212	674376	96.94%	12.084%
11	6.247	1512	1526	1552	rBV	222749	427709	61.48%	7.664%
12	6.690	1649	1664	1685	rBV	179269	353205	50.77%	6.329%
13	7.565	1924	1936	1954	rBV	71493	125734	18.07%	2.253%
14	7.896	2026	2039	2054	rBV	257891	450830	64.80%	8.078%
15	7.970	2054	2062	2082	rVB3	6557	13897	2.00%	0.249%
16	8.179	2115	2127	2142	rBV	45883	76387	10.98%	1.369%
17	8.632	2256	2268	2308	rBV3	307586	695685	100.00%	12.466%
18	8.787	2308	2316	2329	rVB9	3102	7815	1.12%	0.140%
19	9.417	2499	2512	2532	rBV	352912	592773	85.21%	10.622%
20	10.755	2916	2928	2944	rBV	144533	233523	33.57%	4.184%
21	11.812	3245	3257	3274	rBV	275528	445499	64.04%	7.983%
22	12.192	3363	3375	3398	rBV	248681	410558	59.01%	7.357%

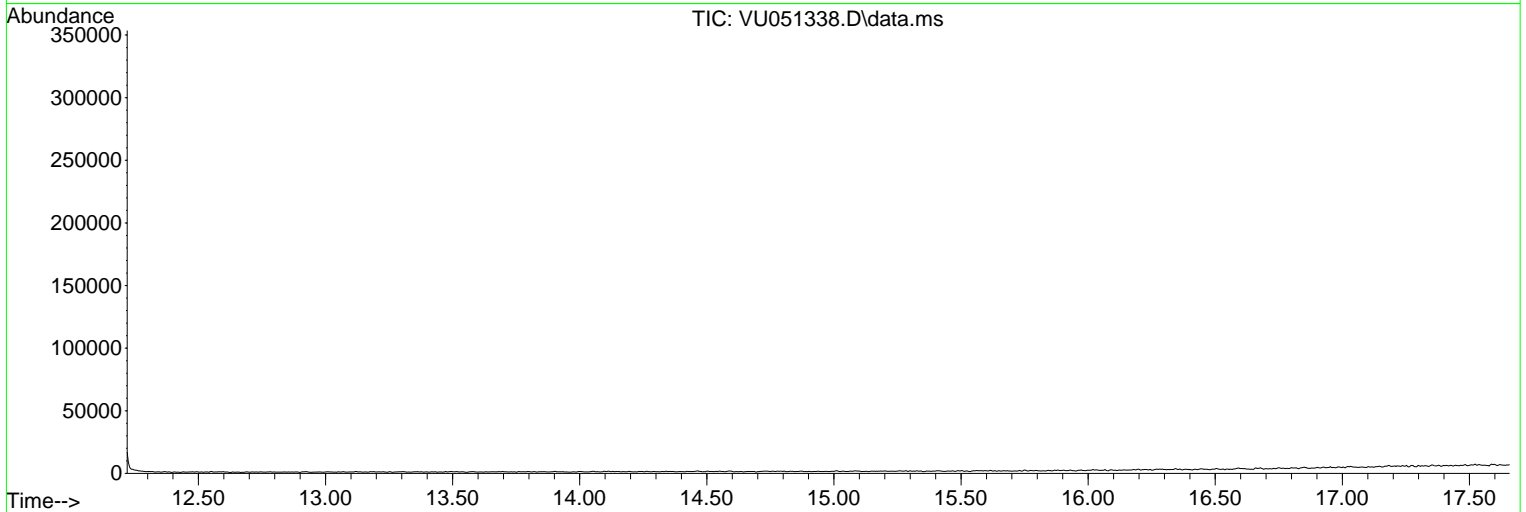
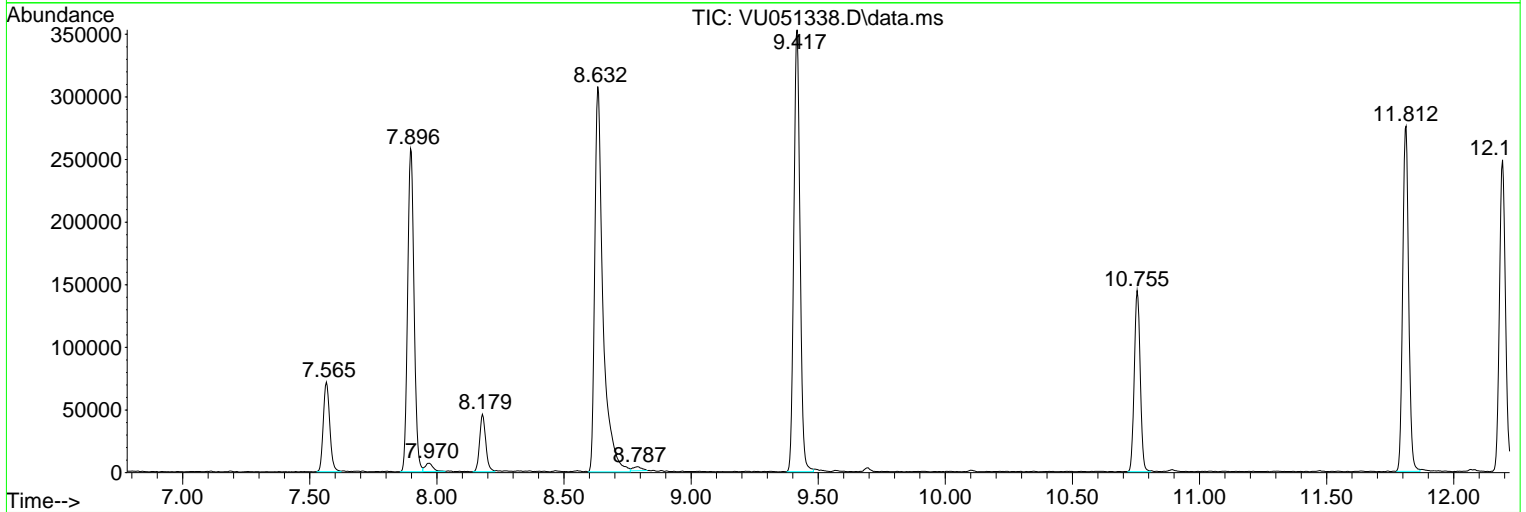
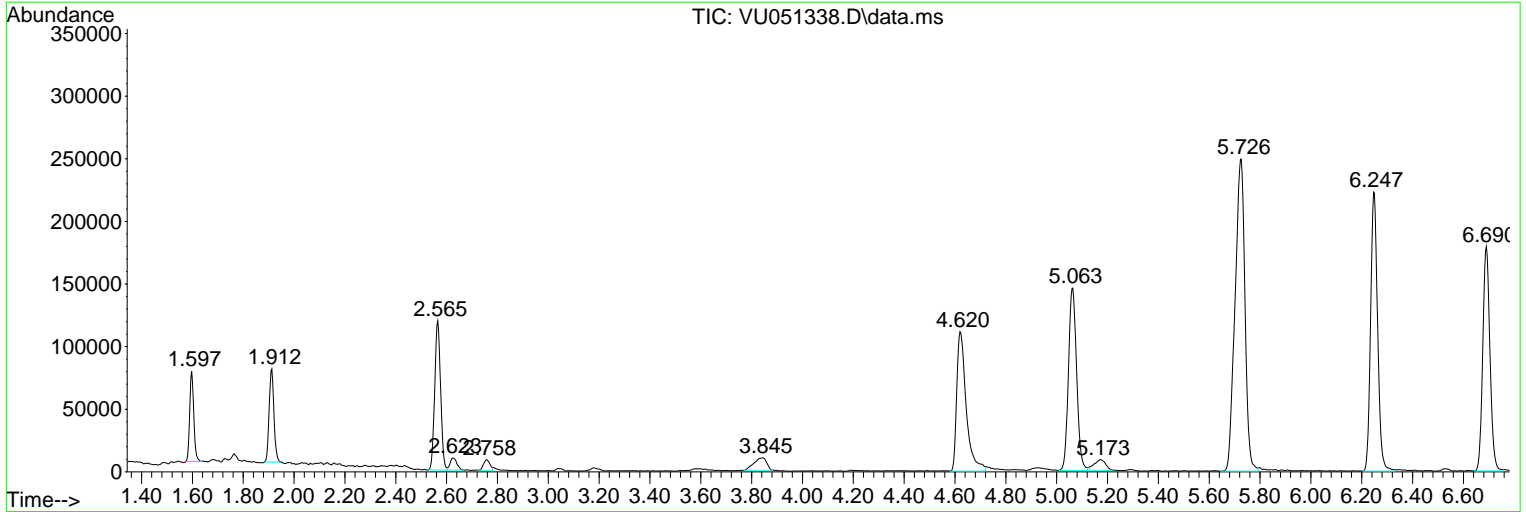
Sum of corrected areas: 5580754

Data Path : Z:\voasrv\HPCHEM1\MSVOA_U\Data\VU101022\
 Data File : VU051338.D
 Acq On : 10 Oct 2022 19:45
 Operator : JC/MD
 Sample : N5026-07
 Misc : 25.0mL/MSVOA_U/WATER
 ALS Vial : 26 Sample Multiplier: 1

Instrument :
 MSVOA_U
 ClientSampleId :
 C0BX5

Quant Method : Z:\voasrv\HPCHEM1\MSVOA_U\Method\SFAMUTR100722WMA.M
 Quant Title : TRACE VOA SFAM1.0

TIC Library : C:\Database\NIST20.L
 TIC Integration Parameters: LSCINT.P



Library Search Compound Report

Data Path : Z:\voasrv\HPCHEM1\MSVOA_U\Data\VU101022\
Data File : VU051338.D
Acq On : 10 Oct 2022 19:45
Operator : JC/MD
Sample : N5026-07
Misc : 25.0mL/MSVOA_U/WATER
ALS Vial : 26 Sample Multiplier: 1

Instrument :
MSVOA_U
ClientSampleId :
C0BX5

Quant Method : Z:\voasrv\HPCHEM1\MSVOA_U\Method\SFAMUTR100722WMA.M
Quant Title : TRACE VOA SFAM1.0

TIC Library : C:\Database\NIST20.L
TIC Integration Parameters: LSCINT.P

No Library Search Compounds Detected

Data Path : Z:\voasrv\HPCHEM1\MSVOA_U\Data\VU101022\
Data File : VU051338.D
Acq On : 10 Oct 2022 19:45
Operator : JC/MD
Sample : N5026-07
Misc : 25.0mL/MSVOA_U/WATER
ALS Vial : 26 Sample Multiplier: 1

Instrument :
MSVOA_U
ClientSampleId :
C0BX5

Quant Method : Z:\voasrv\HPCHEM1\MSVOA_U\Method\SFAMUTR100722WMA.M
Quant Title : TRACE VOA SFAM1.0

TIC Library : C:\Database\NIST0.L
TIC Integration Parameters: LSCINT.P

TIC Top Hit name	RT	EstConc	Units	Response	--Internal Standard--		
					#	RT	Resp Conc
