

Data Path : Z:\VOASRV\HPCHEM1\MSVOA U\DATA\VU101119\  
 Data File : VU035057.D  
 Acq On : 10 Oct 2019 18:59  
 Operator : JC/SP  
 Sample : K5309-02  
 Misc : 25.0mL/MSVOA U/WATER  
 ALS Vial : 26 Sample Multiplier: 1

Instrument :  
 MSVOA\_U  
 ClientSampleId :  
 RB-1-191002-01

Quant Time: Oct 11 05:27:39 2019  
 Quant Method : Z:\VOASRV\HPCHEM1\MSVOA\_U\METHOD\SOMUTR100719WMA.M  
 Quant Title : TRACE VOA SOM01.0  
 QLast Update : Fri Oct 11 04:39:23 2019  
 Response via : Initial Calibration

Internal Standards	R.T.	QIon	Response	Conc	Units	Dev(Min)
1) 1,4-Difluorobenzene	5.87	114	167256	5.00	ug/L	0.00
28) Chlorobenzene-d5	9.07	117	168649	5.00	ug/L	0.00
60) 1,4-Dichlorobenzene-d4	11.47	152	64062	5.00	ug/L	0.00

## System Monitoring Compounds

4) Vinyl Chloride-d3	1.40	65	35532	3.59	ug/L	0.00
Spiked Amount	5.000	Range	40 - 130	Recovery	=	71.80%
7) Chloroethane-d5	1.68	69	38649	4.19	ug/L	0.00
Spiked Amount	5.000	Range	65 - 130	Recovery	=	83.80%
11) 1,1-Dichloroethene-d2	2.26	63	56370	2.70	ug/L	0.00
Spiked Amount	5.000	Range	60 - 125	Recovery	=	54.00%#
20) 2-Butanone-d5	4.17	46	155495	53.41	ug/L	-0.01
Spiked Amount	50.000	Range	40 - 130	Recovery	=	106.82%
24) Chloroform-d	4.62	84	86513	4.68	ug/L	0.00
Spiked Amount	5.000	Range	70 - 125	Recovery	=	93.60%
26) 1,2-Dichloroethane-d4	5.29	65	52864	4.77	ug/L	0.00
Spiked Amount	5.000	Range	70 - 130	Recovery	=	95.40%
32) Benzene-d6	5.32	84	169408	4.28	ug/L	0.00
Spiked Amount	5.000	Range	70 - 125	Recovery	=	85.60%
36) 1,2-Dichloropropane-d6	6.31	67	62354	4.72	ug/L	0.00
Spiked Amount	5.000	Range	60 - 140	Recovery	=	94.40%
41) Toluene-d8	7.55	98	146286	3.82	ug/L	0.00
Spiked Amount	5.000	Range	70 - 130	Recovery	=	76.40%
43) trans-1,3-Dichloropropene-	7.84	79	18145	3.82	ug/L	0.00
Spiked Amount	5.000	Range	55 - 130	Recovery	=	76.40%
46) 2-Hexanone-d5	8.30	63	105540	46.64	ug/L	0.00
Spiked Amount	50.000	Range	45 - 130	Recovery	=	93.28%
57) 1,1,2,2-Tetrachloroethane-	10.41	84	56834	5.10	ug/L	0.00
Spiked Amount	5.000	Range	65 - 120	Recovery	=	102.00%
64) 1,2-Dichlorobenzene-d4	11.85	152	55578	5.14	ug/L	0.00
Spiked Amount	5.000	Range	80 - 120	Recovery	=	102.80%

## Target Compounds

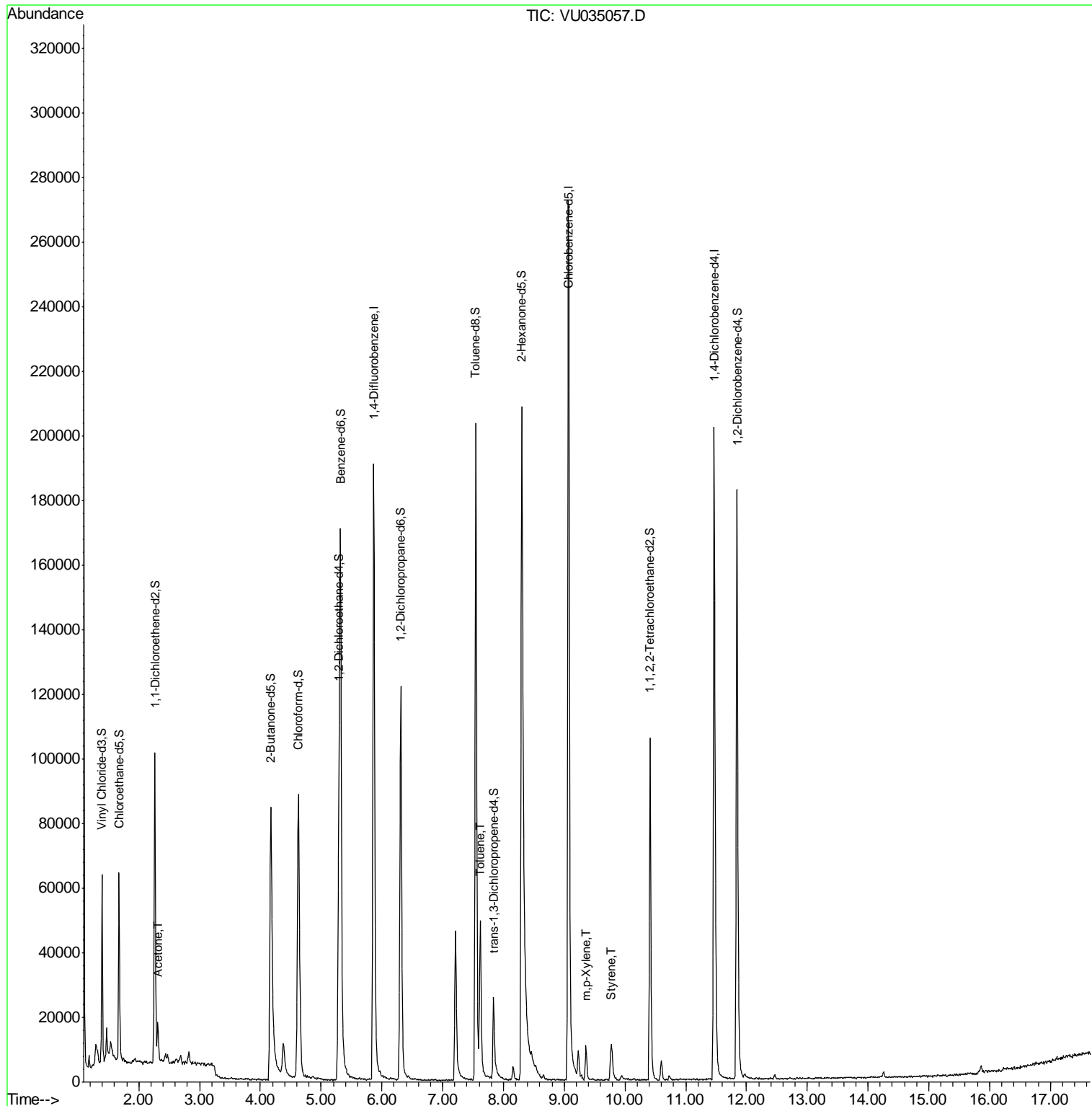
Target Compounds	R.T.	QIon	Response	Conc	Units	Ovalue
13) Acetone	2.31	43	12886	5.404	ug/L	96
42) Toluene	7.62	91	38618	0.728	ug/L	99
53) m,p-Xylene	9.36	106	3684	0.170	ug/L	83
55) Styrene	9.78	104	5503	0.161	ug/L	92

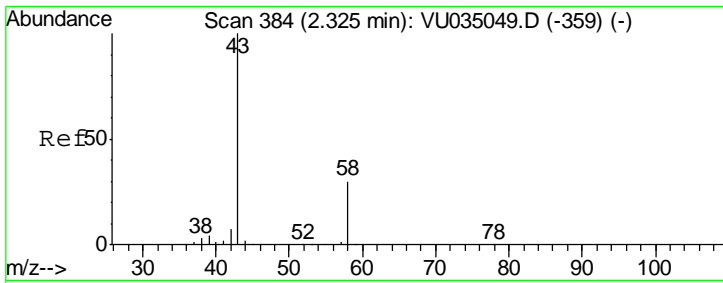
(#) = qualifier out of range (m) = manual integration (+) = signals summed

Data Path : Z:\VOASRV\HPCHEM1\MSVOA U\DATA\VU101119\  
 Data File : VU035057.D  
 Acq On : 10 Oct 2019 18:59  
 Operator : JC/SP  
 Sample : K5309-02  
 Misc : 25.0mL/MSVOA U/WATER  
 ALS Vial : 26 Sample Multiplier: 1

Instrument :  
 MSVOA\_U  
 ClientSampleId :  
 RB-1-191002-01

Quant Time: Oct 11 05:27:39 2019  
 Quant Method : Z:\VOASRV\HPCHEM1\MSVOA\_U\METHOD\SOMUTR100719WMA.M  
 Quant Title : TRACE VOA SOM01.0  
 QLast Update : Fri Oct 11 04:39:23 2019  
 Response via : Initial Calibration

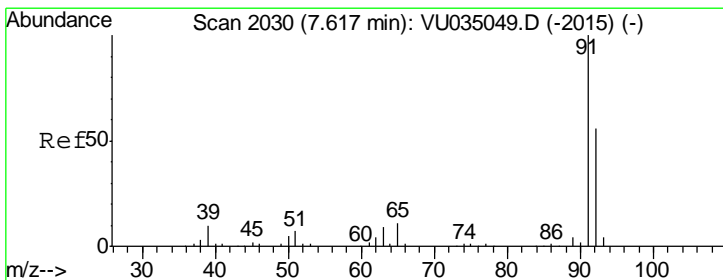
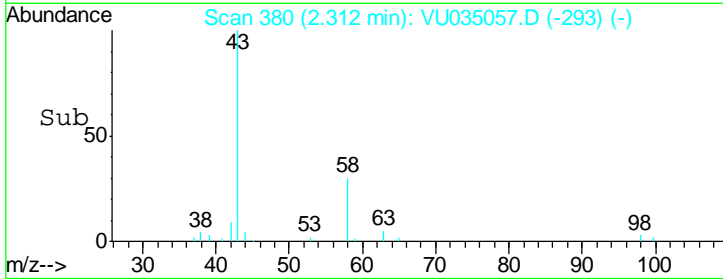
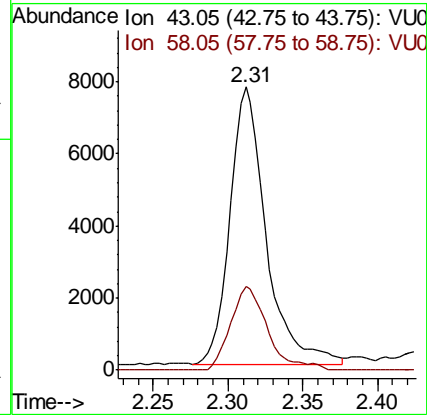
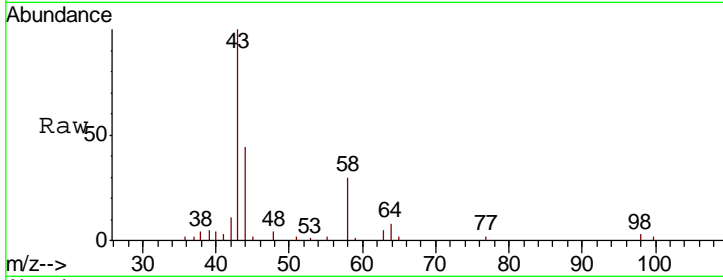




#13  
 Acetone  
 Concen: 5.404 ug/L  
 RT: 2.31 min Scan# 380  
 Delta R.T. -0.02 min  
 Lab File: VU035057.D  
 Acq: 10 Oct 2019 18:59

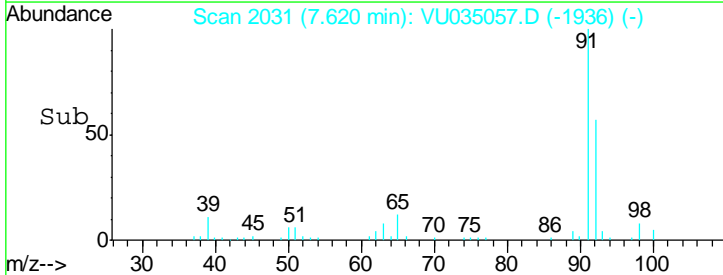
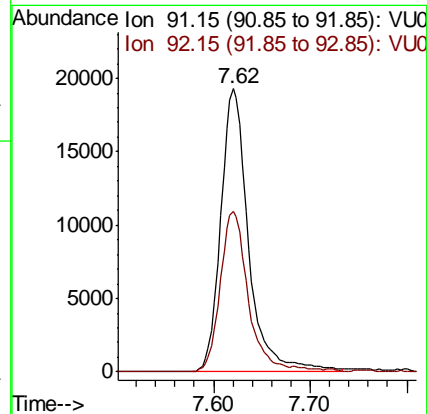
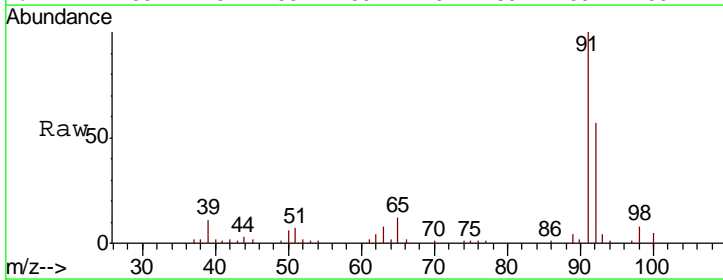
Instrument :  
 MSVOA\_U  
 ClientSampled :  
 RB-1-191002-01

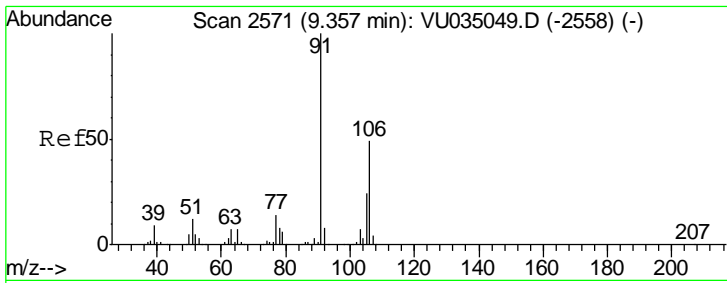
Tgt Ion	Resp	Lower	Upper
43	12886		
58	31.0	0.0	66.6



#42  
 Toluene  
 Concen: 0.728 ug/L  
 RT: 7.62 min Scan# 2031  
 Delta R.T. 0.01 min  
 Lab File: VU035057.D  
 Acq: 10 Oct 2019 18:59

Tgt Ion	Resp	Lower	Upper
91	38618		
92	56.7	40.0	74.2

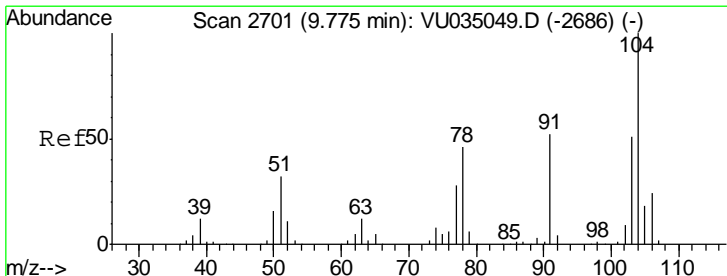
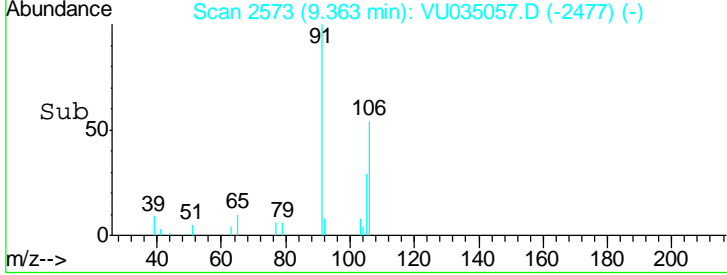
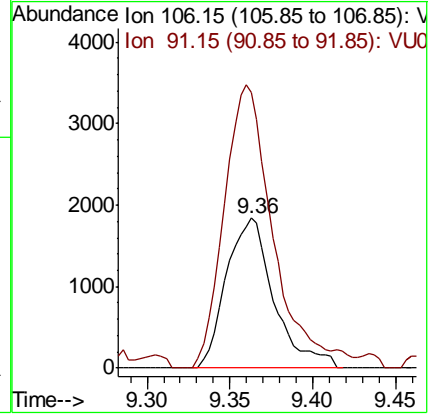
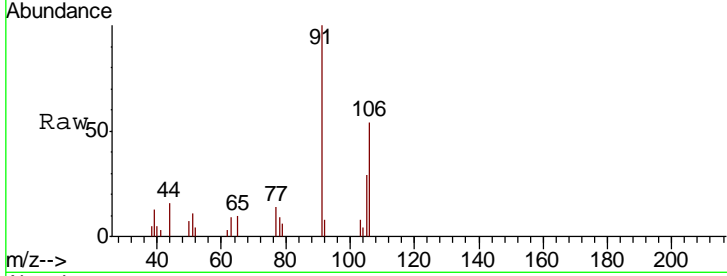




#53  
 m,p-Xylene  
 Concen: 0.170 ug/L  
 RT: 9.36 min Scan# 2573  
 Delta R.T. 0.01 min  
 Lab File: VU035057.D  
 Acq: 10 Oct 2019 18:59

**Instrument :**  
 MSVOA\_U  
**ClientSampled :**  
 RB-1-191002-01

Tgt Ion	Resp	Lower	Upper
106	3684		
91	183.6	147.6	274.0



#55  
 Styrene  
 Concen: 0.161 ug/L  
 RT: 9.78 min Scan# 2704  
 Delta R.T. 0.01 min  
 Lab File: VU035057.D  
 Acq: 10 Oct 2019 18:59

Tgt Ion	Resp	Lower	Upper
104	5503		
78	41.4	32.8	60.8

