

Data Path : Z:\VOASRV\HPCHEM1\MSVOA U\DATA\VU101119\
 Data File : VU035069.D
 Acq On : 11 Oct 2019 00:16
 Operator : JC/SP
 Sample : K5310-20 200X
 Misc : 25.0mL/MSVOA U/WATER
 ALS Vial : 39 Sample Multiplier: 1

Instrument :
 MSVOA_U
 ClientSampleId :
 OU2-MW-2-001-01

Integration Parameters: rteint.p
 Integrator: RTE
 Smoothing : ON
 Sampling : 1
 Start Thrs: 0.1
 Stop Thrs : 0

Filtering: 5
 Min Area: 3 % of largest Peak
 Max Peaks: 100
 Peak Location: TOP

If leading or trailing edge < 100 prefer < Baseline drop else tangent >
 Peak separation: 5

Method : Z:\VOASRV\HPCHEM1\MSVOA_U\METHOD\SOMUTR100719WMA.M
 Title : TRACE VOA SOM01.0

Signal : TIC

peak #	R.T. min	first scan	max scan	last scan	PK TY	peak height	corr. area	corr. % max.	% of total
1	1.296	56	64	67	rBV3	3650	6075	1.00%	0.135%
2	1.396	88	95	106	rBV	54846	58635	9.67%	1.300%
3	1.537	134	139	156	rVB2	5670	11117	1.83%	0.246%
4	1.675	175	182	194	rBV	53446	67063	11.06%	1.487%
5	2.264	355	365	377	rBV	87930	133614	22.03%	2.962%
6	2.682	489	495	507	rVB3	6553	11888	1.96%	0.264%
7	2.826	529	540	552	rVB	22218	46742	7.71%	1.036%
8	4.174	941	959	990	rBV	82911	280347	46.23%	6.215%
9	4.627	1084	1100	1126	rBV	83157	219137	36.13%	4.858%
10	5.318	1293	1315	1353	rBV2	162937	485130	79.99%	10.755%
11	5.865	1469	1485	1514	rBV2	183923	385208	63.52%	8.540%
12	6.161	1566	1577	1592	rVB9	3011	6303	1.04%	0.140%
13	6.312	1610	1624	1648	rBV	119262	250737	41.34%	5.559%
14	7.212	1892	1904	1927	rBV	43779	90824	14.98%	2.014%
15	7.456	1971	1980	1993	rBV4	5293	11623	1.92%	0.258%
16	7.546	1996	2008	2028	rBV	192117	355986	58.70%	7.892%
17	7.839	2088	2099	2115	rBV2	23114	47882	7.90%	1.062%
18	8.209	2205	2214	2229	rVB3	15656	28376	4.68%	0.629%
19	8.302	2229	2243	2295	rBV	190692	606467	100.00%	13.445%
20	9.074	2470	2483	2511	rBV	255943	493198	81.32%	10.934%
21	10.414	2887	2900	2935	rBV	100568	180237	29.72%	3.996%
22	10.601	2945	2958	2967	rBV6	3613	6903	1.14%	0.153%
23	11.469	3217	3228	3257	rBV	182835	377659	62.27%	8.373%
24	11.845	3333	3345	3371	rBV	175427	335581	55.33%	7.440%
25	12.466	3525	3538	3547	rVB3	3387	6151	1.01%	0.136%
26	13.987	4000	4011	4033	rVB5	3098	7699	1.27%	0.171%

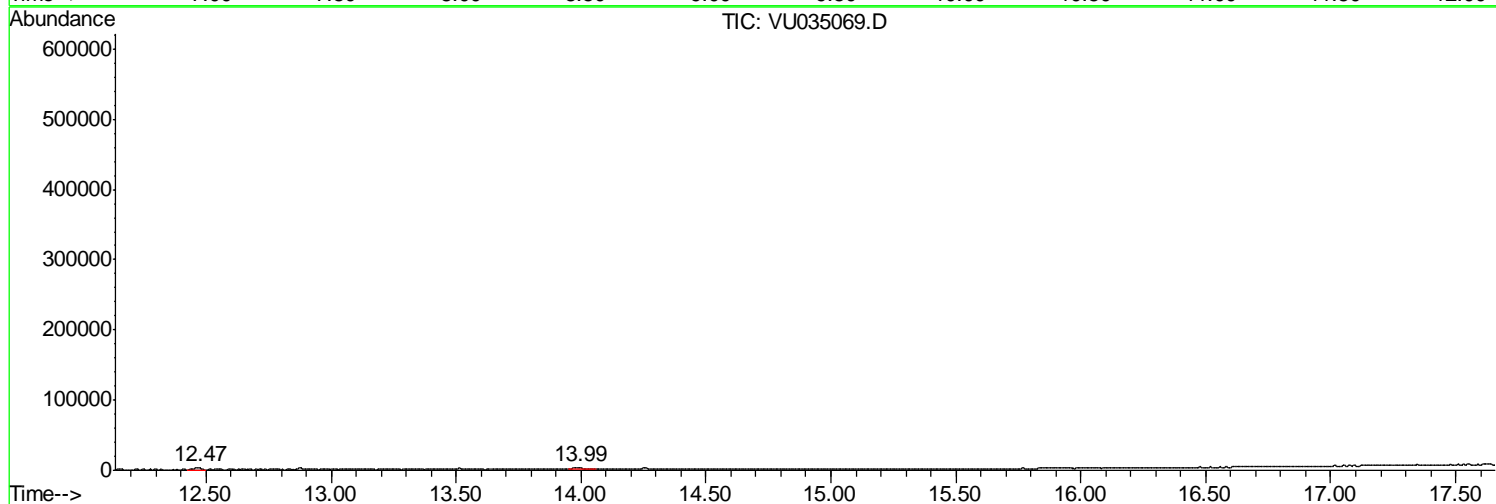
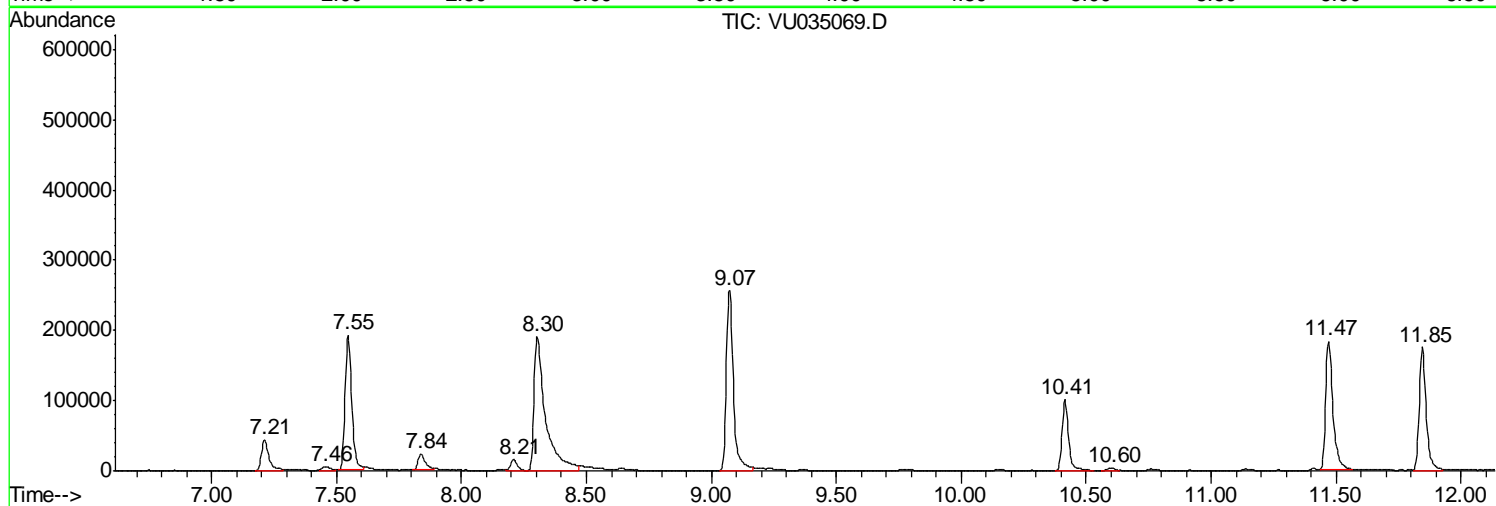
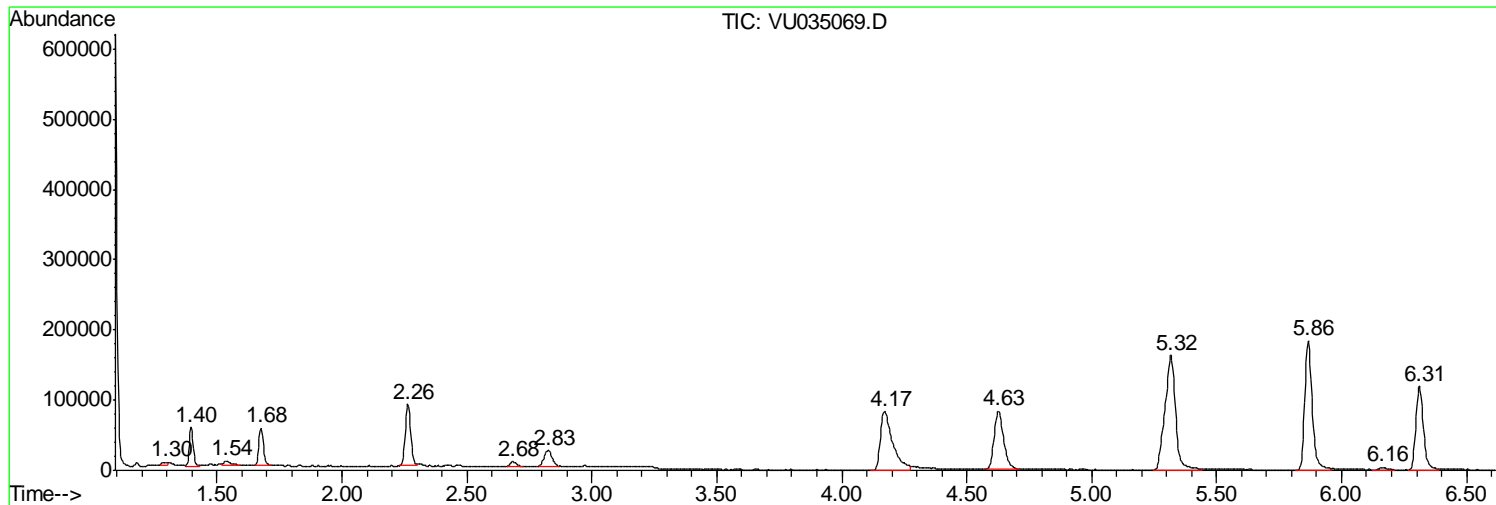
Sum of corrected areas: 4510582

Data Path : Z:\VOASRV\HPCHEM1\MSVOA U\DATA\VU101119\
Data File : VU035069.D
Acq On : 11 Oct 2019 00:16
Operator : JC/SP
Sample : K5310-20 200X
Misc : 25.0mL/MSVOA U/WATER
ALS Vial : 39 Sample Multiplier: 1

Instrument :
MSVOA_U
ClientSampled :
OU2-MW-2-001-01

Quant Method : Z:\VOASRV\HPCHEM1\MSVOA_U\METHOD\SOMUTR100719WMA.M
Quant Title : TRACE VOA SOM01.0

TIC Library : C:\DATABASE\NIST11.L
TIC Integration Parameters: LSCINT.P



Data Path : Z:\VOASRV\HPCHEM1\MSVOA_U\DATA\VU101119\
Data File : VU035069.D
Acq On : 11 Oct 2019 00:16
Operator : JC/SP
Sample : K5310-20 200X
Misc : 25.0mL/MSVOA_U/WATER
ALS Vial : 39 Sample Multiplier: 1

Instrument :
MSVOA_U
ClientSampleId :
OU2-MW-2-001-01

Quant Method : Z:\VOASRV\HPCHEM1\MSVOA_U\METHOD\SOMUTR100719WMA.M
Quant Title : TRACE VOA SOM01.0

TIC Library : C:\DATABASE\NIST11.L
TIC Integration Parameters: LSCINT.P

No Library Search Compounds Detected

Data Path : Z:\VOASRV\HPCHEM1\MSVOA_U\DATA\VU101119\
Data File : VU035069.D
Acq On : 11 Oct 2019 00:16
Operator : JC/SP
Sample : K5310-20 200X
Misc : 25.0mL/MSVOA_U/WATER
ALS Vial : 39 Sample Multiplier: 1

Instrument :
MSVOA_U
ClientSampleId :
OU2-MW-2-001-01

Quant Method : Z:\VOASRV\HPCHEM1\MSVOA_U\METHOD\SOMUTR100719WMA.M
Quant Title : TRACE VOA SOM01.0

TIC Library : C:\DATABASE\NIST11.L
TIC Integration Parameters: LSCINT.P

TIC Top Hit name	RT	EstConc	Units	Response	--Internal Standard--			
					#	RT	Resp	Conc
