

Data File : VU035112.D
 Acq On : 12 Oct 2019 00:25
 Operator : JC/SP
 Sample : K5310-01DL 2000X
 Misc : 25.0mL/MSVOA_U/WATER
 ALS Vial : 37 Sample Multiplier: 1

Instrument :
 MSVOA_U
 ClientSampleId :
 IW-1-001-01DL

Quant Time: Oct 12 02:50:08 2019
 Quant Method : Z:\VOASRV\HPCHEM1\MSVOA_U\METHOD\SOMUTR100719WMA.M
 Quant Title : TRACE VOA SOM01.0
 QLast Update : Sat Oct 12 02:39:23 2019
 Response via : Initial Calibration

Internal Standards	R.T.	QIon	Response	Conc	Units	Dev(Min)
1) 1,4-Difluorobenzene	5.87	114	163960	5.00	ug/L	0.00
28) Chlorobenzene-d5	9.07	117	170954	5.00	ug/L	0.00
60) 1,4-Dichlorobenzene-d4	11.47	152	61689	5.00	ug/L	0.00

System Monitoring Compounds

4) Vinyl Chloride-d3	1.40	65	55559	5.73	ug/L	0.00
Spiked Amount	5.000	Range	40 - 130	Recovery	=	114.60%
7) Chloroethane-d5	1.68	69	52701	5.82	ug/L	0.00
Spiked Amount	5.000	Range	65 - 130	Recovery	=	116.40%
11) 1,1-Dichloroethene-d2	2.26	63	81779	4.00	ug/L	0.00
Spiked Amount	5.000	Range	60 - 125	Recovery	=	80.00%
20) 2-Butanone-d5	4.17	46	149108	52.24	ug/L	0.00
Spiked Amount	50.000	Range	40 - 130	Recovery	=	104.48%
24) Chloroform-d	4.62	84	93426	5.16	ug/L	0.00
Spiked Amount	5.000	Range	70 - 125	Recovery	=	103.20%
26) 1,2-Dichloroethane-d4	5.29	65	57161	5.27	ug/L	0.00
Spiked Amount	5.000	Range	70 - 130	Recovery	=	105.40%
32) Benzene-d6	5.32	84	200104	4.99	ug/L	0.00
Spiked Amount	5.000	Range	70 - 125	Recovery	=	99.80%
36) 1,2-Dichloropropane-d6	6.31	67	69671	5.20	ug/L	0.00
Spiked Amount	5.000	Range	60 - 140	Recovery	=	104.00%
41) Toluene-d8	7.55	98	175499	4.53	ug/L	0.00
Spiked Amount	5.000	Range	70 - 130	Recovery	=	90.60%
43) trans-1,3-Dichloropropene-	7.84	79	20944	4.34	ug/L	0.00
Spiked Amount	5.000	Range	55 - 130	Recovery	=	86.80%
46) 2-Hexanone-d5	8.30	63	110428	48.14	ug/L	0.00
Spiked Amount	50.000	Range	45 - 130	Recovery	=	96.28%
57) 1,1,2,2-Tetrachloroethane-	10.41	84	59289	5.25	ug/L	0.00
Spiked Amount	5.000	Range	65 - 120	Recovery	=	105.00%
64) 1,2-Dichlorobenzene-d4	11.85	152	58613	5.63	ug/L	0.00
Spiked Amount	5.000	Range	80 - 120	Recovery	=	112.60%

Target Compounds

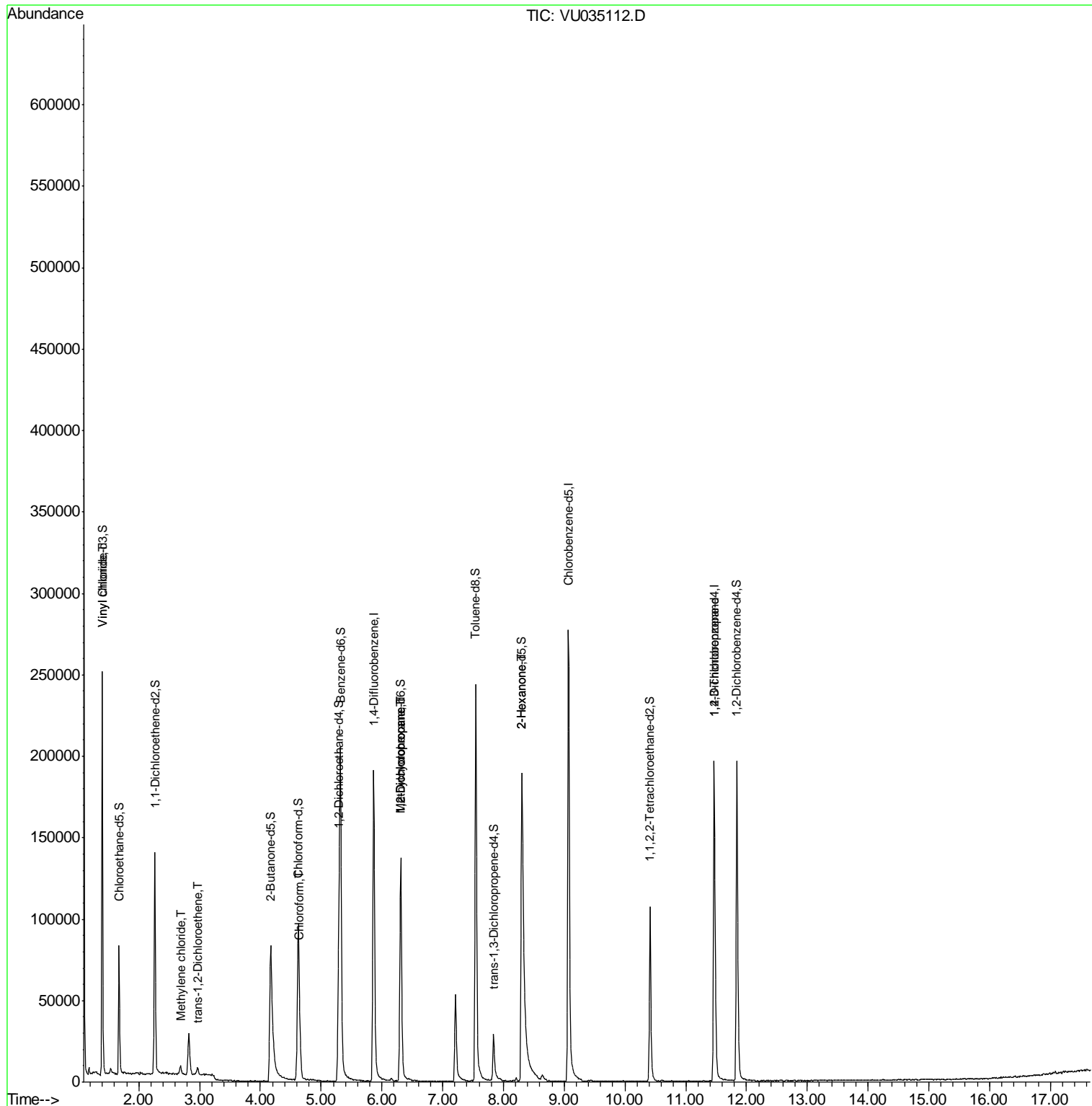
						Qvalue
5) Vinyl chloride	1.40	62	112540	6.970	ug/L	99
16) Methylene chloride	2.68	84	1871	0.144	ug/L	99
18) trans-1,2-Dichloroethene	2.96	96	1417	0.126	ug/L	91
25) Chloroform	4.65	83	13462	0.535	ug/L	97
35) Methylcyclohexane	6.31	83	15334	0.713	ug/L #	18
37) 1,2-Dichloropropane	6.31	63	8190	0.590	ug/L #	89
48) 2-Hexanone	8.31	43	11365	1.896	ug/L #	65
59) 1,2,3-Trichloropropane	11.47	75	8577	0.954	ug/L	96

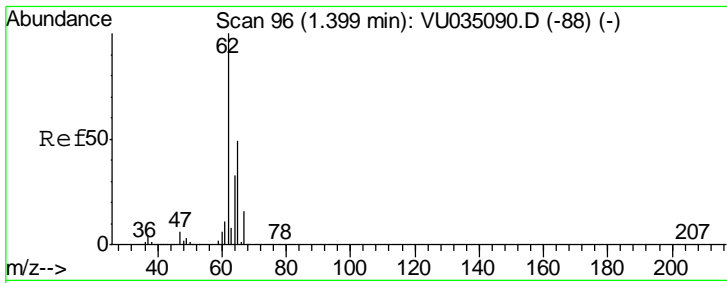
(#) = qualifier out of range (m) = manual integration (+) = signals summed

Data File : VU035112.D
Acq On : 12 Oct 2019 00:25
Operator : JC/SP
Sample : K5310-01DL 2000X
Misc : 25.0mL/MSVOA_U/WATER
ALS Vial : 37 Sample Multiplier: 1

Instrument :
MSVOA_U
ClientSampleId :
IW-1-001-01DL

Quant Time: Oct 12 02:50:08 2019
Quant Method : Z:\VOASRV\HPCHEM1\MSVOA_U\METHOD\SOMUTR100719WMA.M
Quant Title : TRACE VOA SOM01.0
QLast Update : Sat Oct 12 02:39:23 2019
Response via : Initial Calibration

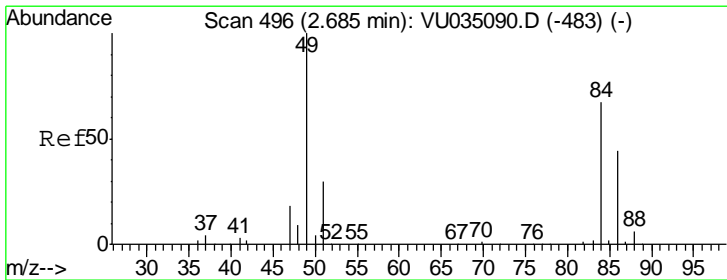
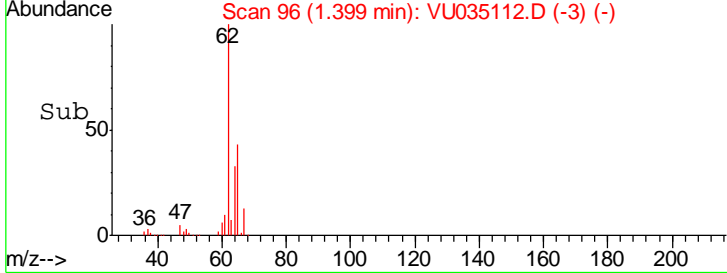
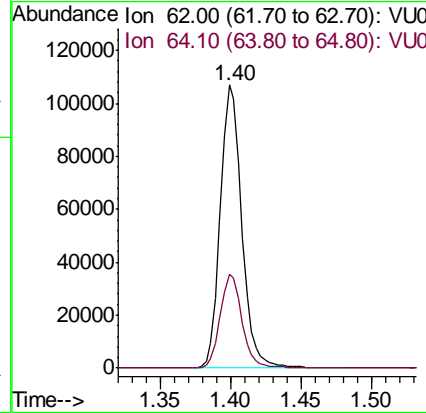
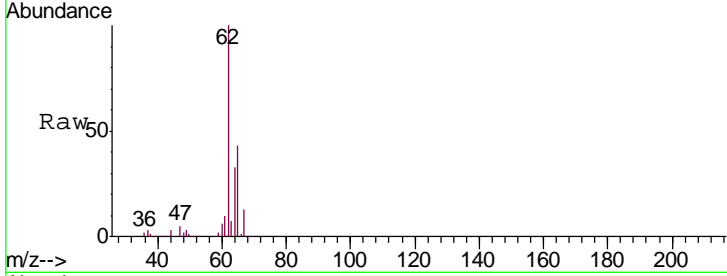




#5
 Vinyl chloride
 Concen: 6.970 ug/L
 RT: 1.40 min Scan# 96
 Delta R.T. 0.00 min
 Lab File: VU035112.D
 Acq: 12 Oct 2019 00:25

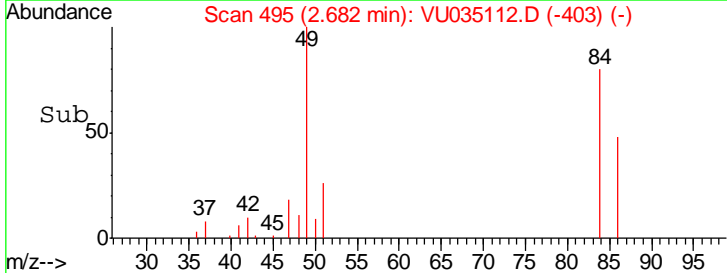
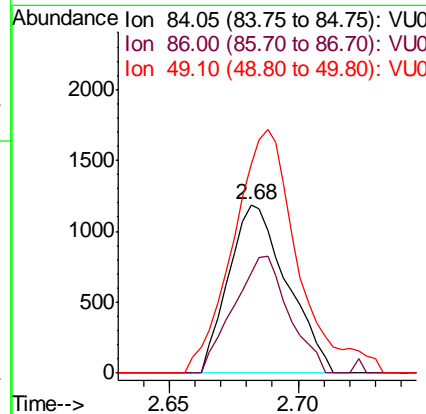
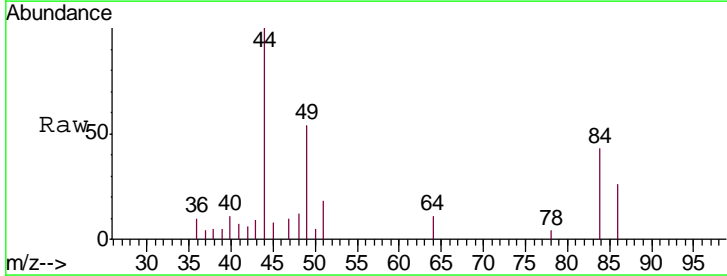
Instrument : MSVOA_U
 ClientSampleID : IW-1-001-01DL

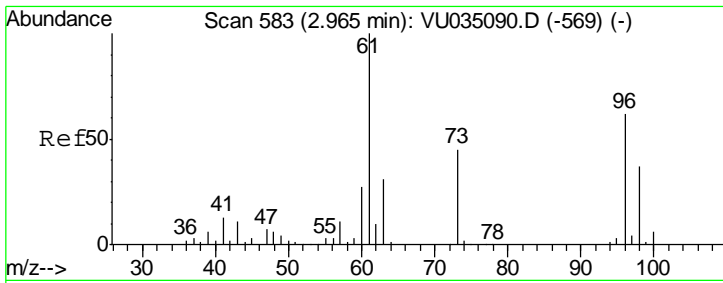
Tgt Ion	Resp	Lower	Upper
62	112540		
64	33.1	22.8	42.4



#16
 Methylene chloride
 Concen: 0.144 ug/L
 RT: 2.68 min Scan# 495
 Delta R.T. -0.00 min
 Lab File: VU035112.D
 Acq: 12 Oct 2019 00:25

Tgt Ion	Resp	Lower	Upper
84	1871		
86	59.6	42.5	78.9
49	124.5	86.9	161.3

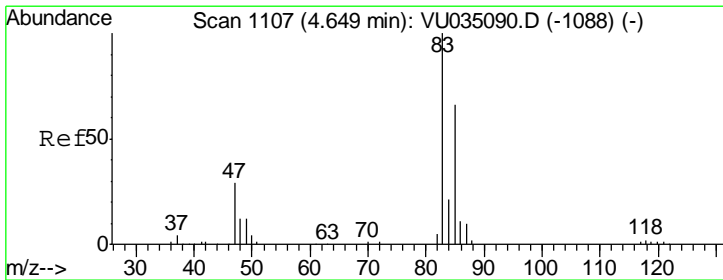
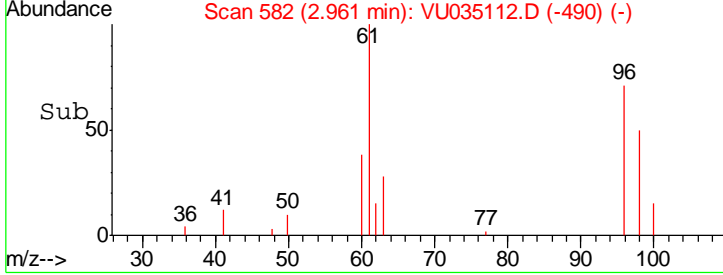
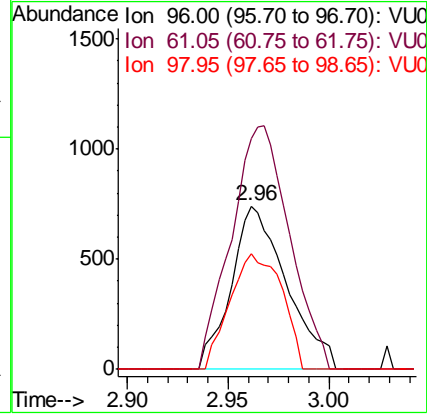
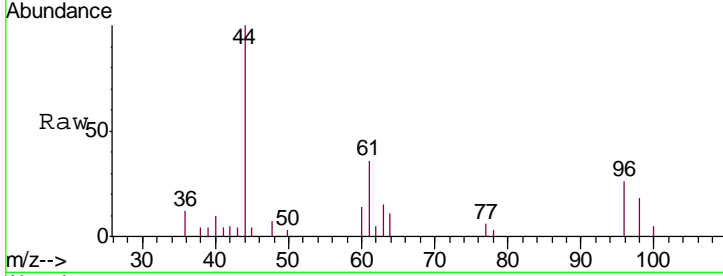




#18
 trans-1,2-Dichloroethene
 Concen: 0.126 ug/L
 RT: 2.96 min Scan# 582
 Delta R.T. -0.00 min
 Lab File: VU035112.D
 Acq: 12 Oct 2019 00:25

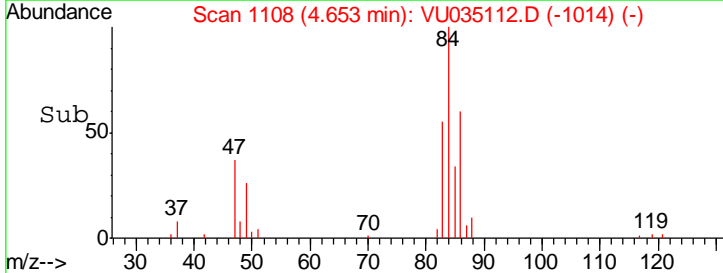
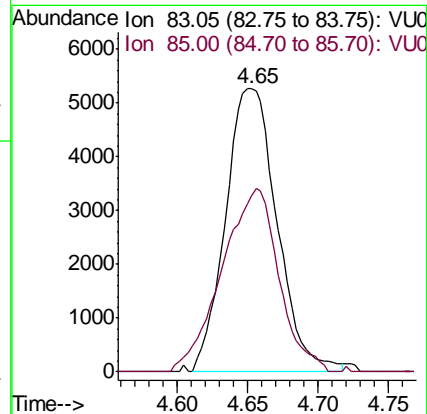
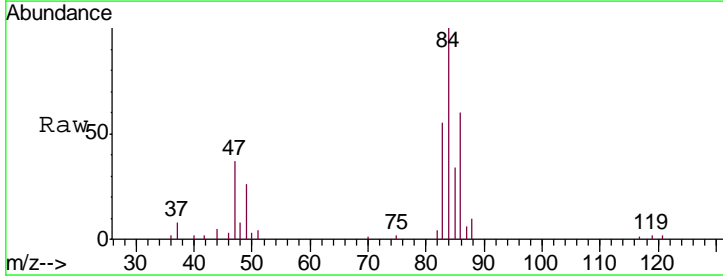
Instrument : MSVOA_U
 ClientSampled : IW-1-001-01DL

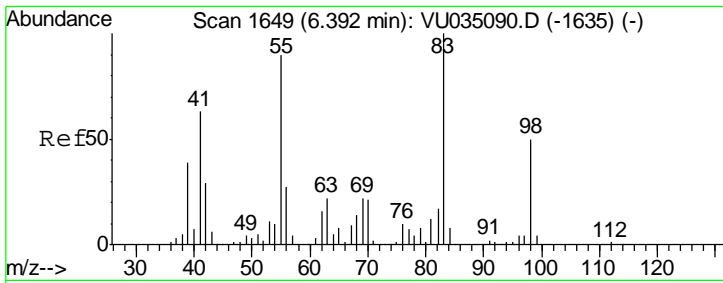
Tgt Ion	Resp	Lower	Upper
96	1417		
61	141.0	107.1	198.9
98	70.5	45.4	84.4



#25
 Chloroform
 Concen: 0.535 ug/L
 RT: 4.65 min Scan# 1108
 Delta R.T. 0.00 min
 Lab File: VU035112.D
 Acq: 12 Oct 2019 00:25

Tgt Ion	Resp	Lower	Upper
83	13462		
85	62.3	45.4	84.4

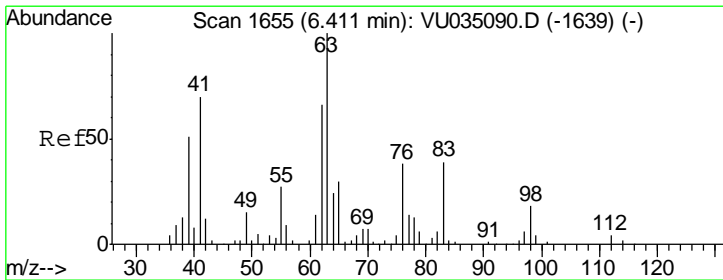
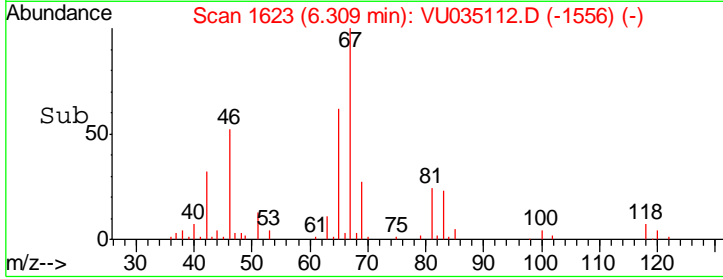
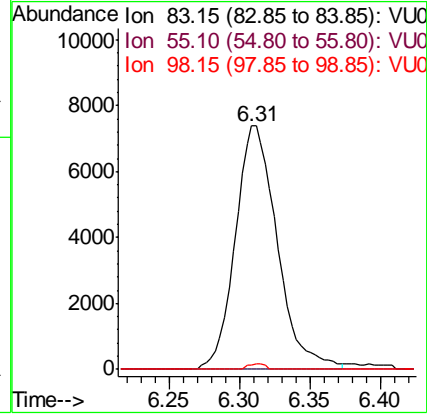
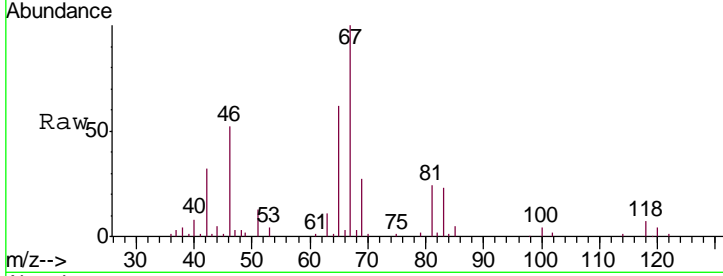




#35
 Methylcyclohexane
 Concen: 0.713 ug/L
 RT: 6.31 min Scan# 1623
 Delta R.T. -0.08 min
 Lab File: VU035112.D
 Acq: 12 Oct 2019 00:25

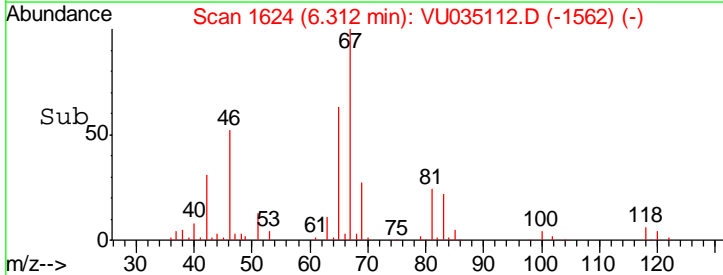
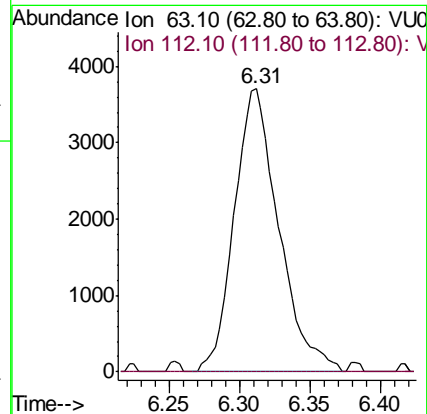
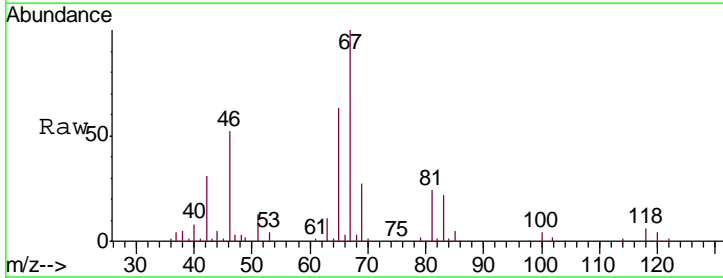
Instrument :
 MSVOA_U
 ClientSampled :
 IW-1-001-01DL

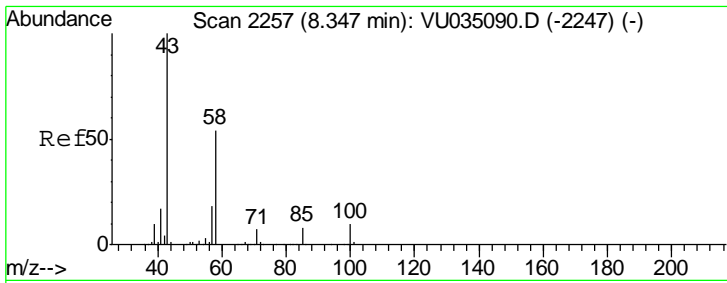
Tgt Ion	Resp	Lower	Upper
83	15334		
55	0.0	62.6	94.0#
98	0.9	36.2	54.2#



#37
 1,2-Dichloropropane
 Concen: 0.590 ug/L
 RT: 6.31 min Scan# 1624
 Delta R.T. -0.10 min
 Lab File: VU035112.D
 Acq: 12 Oct 2019 00:25

Tgt Ion	Resp	Lower	Upper
63	8190		
112	0.2	3.1	4.7#



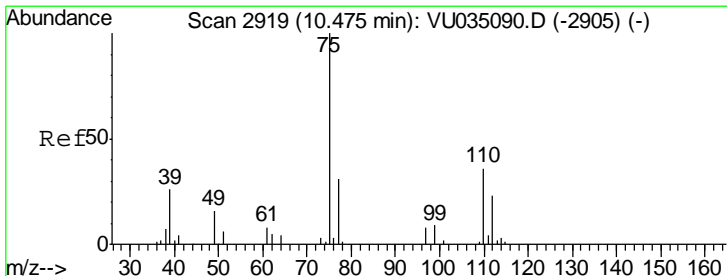
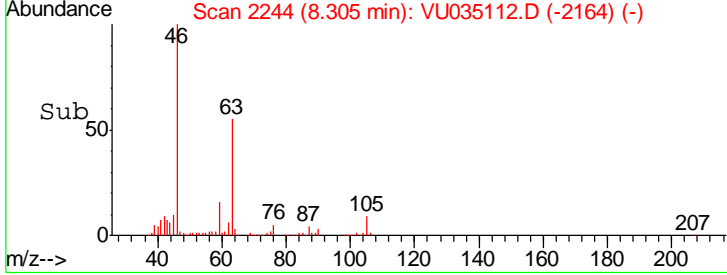
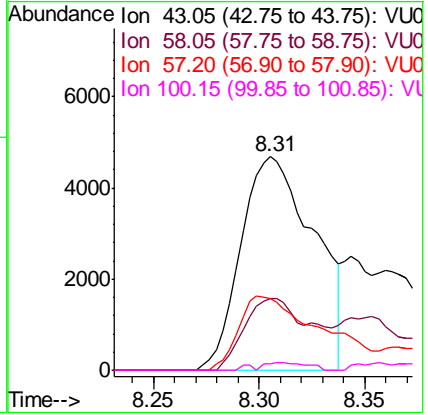
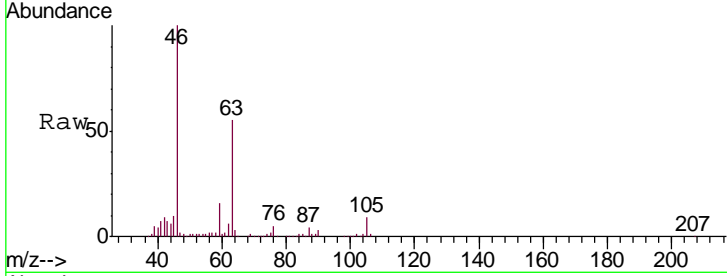


#48
 2-Hexanone
 Concen: 1.896 ug/L
 RT: 8.31 min Scan# 2244
 Delta R.T. -0.04 min
 Lab File: VU035112.D
 Acq: 12 Oct 2019 00:25

Instrument : MSVOA_U
 ClientSampleID : IW-1-001-01DL

Tgt Ion: 43 Resp: 11365

Ion	Ratio	Lower	Upper
43	100		
58	30.5	44.1	66.1#
57	0.0	15.8	23.8#
100	2.1	9.4	14.2#



#59
 1,2,3-Trichloropropane
 Concen: 0.954 ug/L
 RT: 11.47 min Scan# 3228
 Delta R.T. 0.99 min
 Lab File: VU035112.D
 Acq: 12 Oct 2019 00:25

Tgt Ion: 75 Resp: 8577

Ion	Ratio	Lower	Upper
75	100		
77	35.2	26.5	39.7

