

Data Path : Z:\voasrv\HPCHEM1\MSVOA_U\Data\VU101222\
 Data File : VU051390.D
 Acq On : 12 Oct 2022 14:25
 Operator : JC/MD
 Sample : N4993-03
 Misc : 25.0mL/MSVOA_U/WATER
 ALS Vial : 7 Sample Multiplier: 1

Instrument :
 MSVOA_U
 ClientSampleId :
 BGS13

Quant Time: Oct 13 01:39:57 2022
 Quant Method : Z:\voasrv\HPCHEM1\MSVOA_U\Method\SFAMUTR100722WMA.M
 Quant Title : TRACE VOA SFAM1.0
 QLast Update : Thu Oct 13 01:37:29 2022
 Response via : Initial Calibration

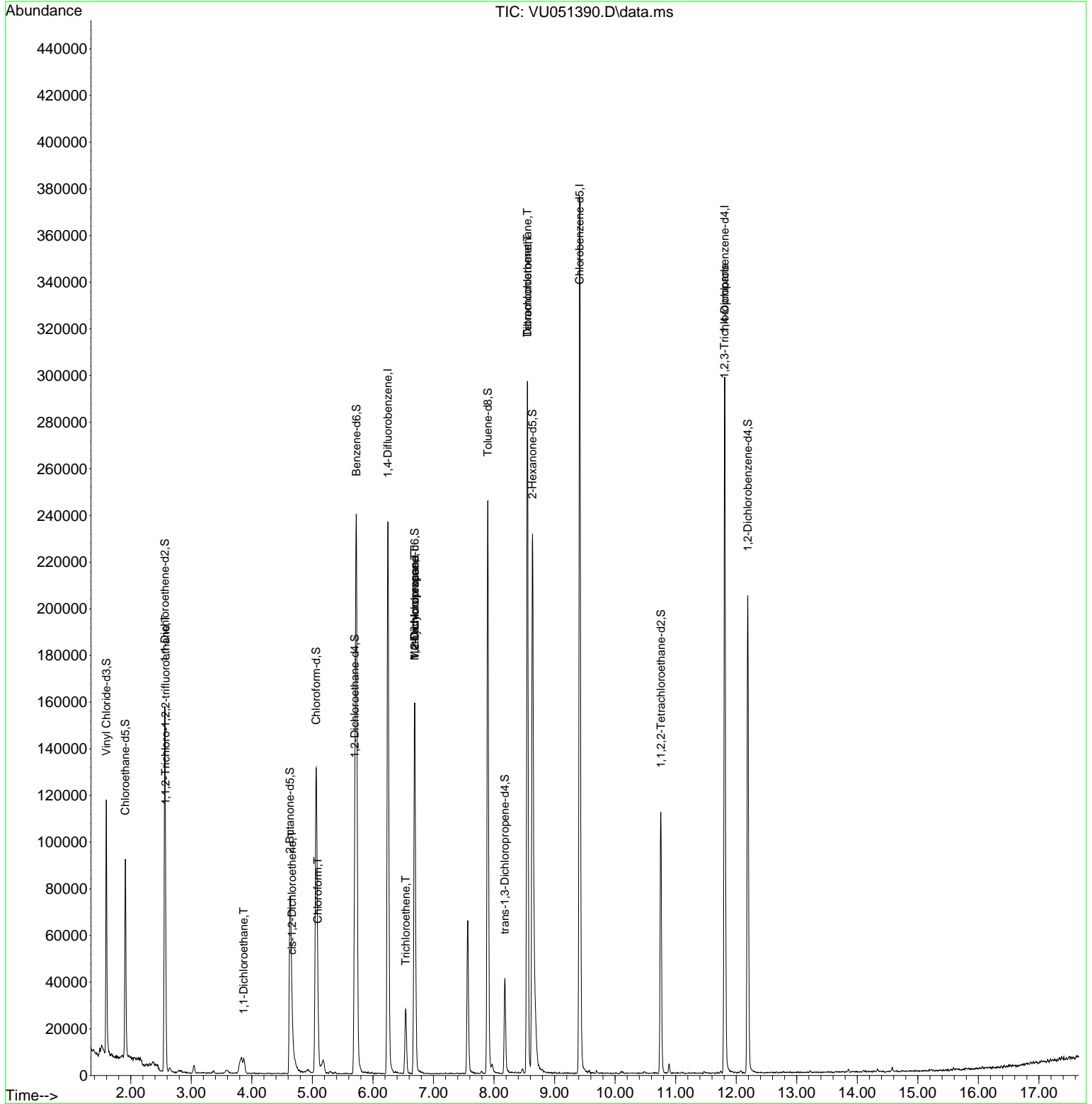
Compound	R.T.	QIon	Response	Conc	Units	Dev(Min)
Internal Standards						
1) 1,4-Difluorobenzene	6.247	114	188845	5.000	ug/L	0.00
28) Chlorobenzene-d5	9.414	117	211509	5.000	ug/L	0.00
58) 1,4-Dichlorobenzene-d4	11.809	152	80683	5.000	ug/L	0.00
System Monitoring Compounds						
4) Vinyl Chloride-d3	1.594	65	84219	5.529	ug/L	0.00
Spiked Amount	5.000	Range 40 - 130	Recovery	=	110.600%	
7) Chloroethane-d5	1.909	69	62838	4.801	ug/L	0.00
Spiked Amount	5.000	Range 65 - 130	Recovery	=	96.000%	
11) 1,1-Dichloroethene-d2	2.562	65	29749	4.940	ug/L	0.00
Spiked Amount	5.000	Range 60 - 125	Recovery	=	98.800%	
20) 2-Butanone-d5	4.630	46	126081	37.593	ug/L	0.00
Spiked Amount	50.000	Range 40 - 130	Recovery	=	75.180%	
24) Chloroform-d	5.060	84	120175	4.232	ug/L	0.00
Spiked Amount	5.000	Range 70 - 125	Recovery	=	84.600%	
26) 1,2-Dichloroethane-d4	5.700	65	64594	4.410	ug/L	0.00
Spiked Amount	5.000	Range 70 - 130	Recovery	=	88.200%	
32) Benzene-d6	5.726	84	222989	3.832	ug/L	0.00
Spiked Amount	5.000	Range 70 - 125	Recovery	=	76.600%	
36) 1,2-Dichloropropane-d6	6.691	67	78275	3.961	ug/L	0.00
Spiked Amount	5.000	Range 60 - 140	Recovery	=	79.200%	
41) Toluene-d8	7.896	98	165217	3.174	ug/L	0.00
Spiked Amount	5.000	Range 70 - 130	Recovery	=	63.400%#	
43) trans-1,3-Dichloroprop...	8.179	79	23829	3.670	ug/L	0.00
Spiked Amount	5.000	Range 55 - 130	Recovery	=	73.400%	
46) 2-Hexanone-d5	8.633	63	68516	31.313	ug/L	0.00
Spiked Amount	50.000	Range 45 - 130	Recovery	=	62.620%	
56) 1,1,2,2-Tetrachloroeth...	10.755	84	59060	3.741	ug/L	0.00
Spiked Amount	5.000	Range 65 - 120	Recovery	=	74.800%	
66) 1,2-Dichlorobenzene-d4	12.192	152	55519	3.959	ug/L	0.00
Spiked Amount	5.000	Range 80 - 120	Recovery	=	79.200%#	
Target Compounds						
10) 1,1,2-Trichloro-1,2,2-...	2.575	101	2988	0.204	ug/L #	72
19) 1,1-Dichloroethane	3.864	63	7568	0.253	ug/L	98
22) cis-1,2-Dichloroethene	4.665	96	2478	0.154	ug/L	88
25) Chloroform	5.089	83	20663	0.662	ug/L	97
34) Trichloroethene	6.539	95	9656	0.548	ug/L	96
35) Methylcyclohexane	6.687	83	17375	0.782	ug/L #	17
37) 1,2-Dichloropropane	6.687	63	7721	0.399	ug/L #	88
47) Tetrachloroethene	8.552	164	65224	5.036	ug/L	97
49) Dibromochloromethane	8.552	129	67093	4.397	ug/L #	11
61) 1,2,3-Trichloropropane	11.806	75	9666	0.949	ug/L #	69

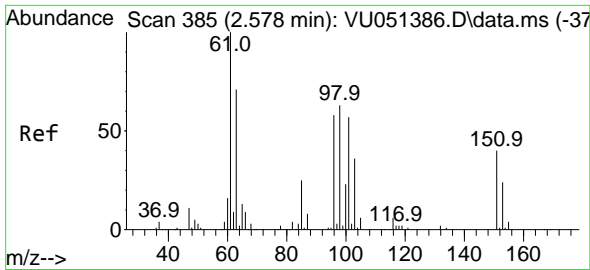
(#) = qualifier out of range (m) = manual integration (+) = signals summed

Data Path : Z:\voasrv\HPCHEM1\MSVOA_U\Data\VU101222\
 Data File : VU051390.D
 Acq On : 12 Oct 2022 14:25
 Operator : JC/MD
 Sample : N4993-03
 Misc : 25.0mL/MSVOA_U/WATER
 ALS Vial : 7 Sample Multiplier: 1

Instrument :
 MSVOA_U
 ClientSampleId :
 BGS13

Quant Time: Oct 13 01:39:57 2022
 Quant Method : Z:\voasrv\HPCHEM1\MSVOA_U\Method\SFAMUTR100722WMA.M
 Quant Title : TRACE VOA SFAM1.0
 QLast Update : Thu Oct 13 01:37:29 2022
 Response via : Initial Calibration

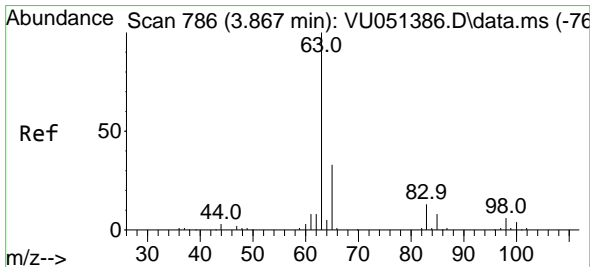
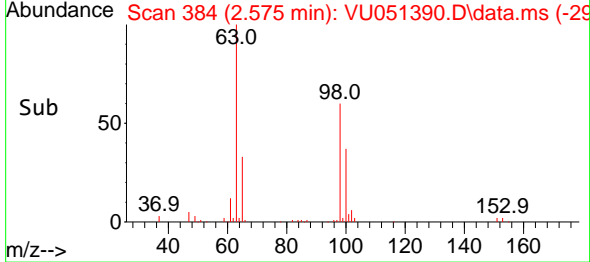
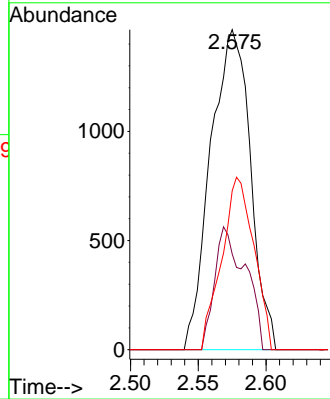
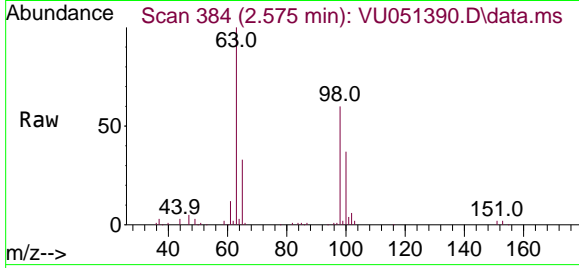




#10
 1,1,2-Trichloro-1,2,2-trifluoroethane
 Concen: 0.204 ug/L
 RT: 2.575 min Scan# 384
 Delta R.T. -0.003 min
 Lab File: VU051390.D
 Acq: 12 Oct 2022 14:25

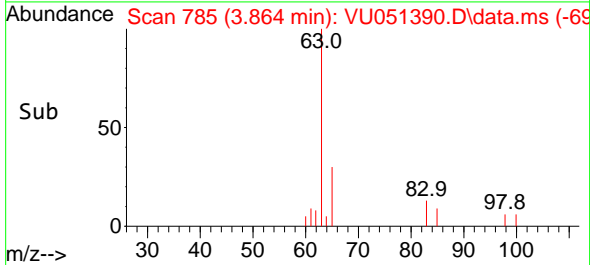
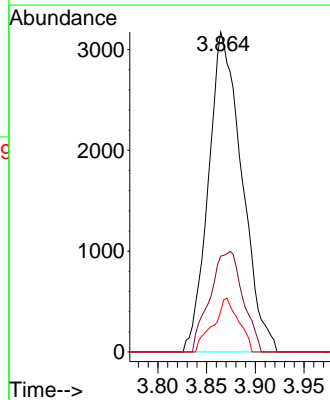
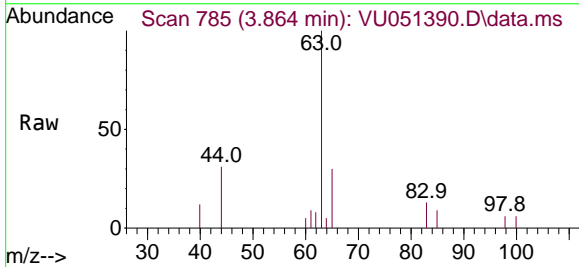
Instrument :
 MSVOA_U
 ClientSampleId :
 BGS13

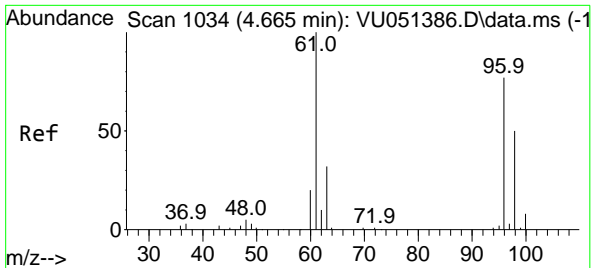
Tgt Ion	Resp	Lower	Upper
101	2988		
85	29.6	34.6	51.8#
151	43.6	56.5	84.7#



#19
 1,1-Dichloroethane
 Concen: 0.253 ug/L
 RT: 3.864 min Scan# 785
 Delta R.T. -0.003 min
 Lab File: VU051390.D
 Acq: 12 Oct 2022 14:25

Tgt Ion	Resp	Lower	Upper
63	7568		
65	30.0	22.0	41.0
83	12.7	9.0	16.6



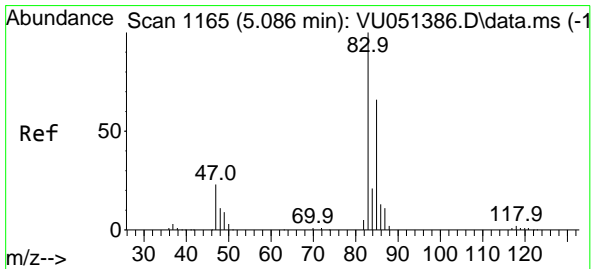
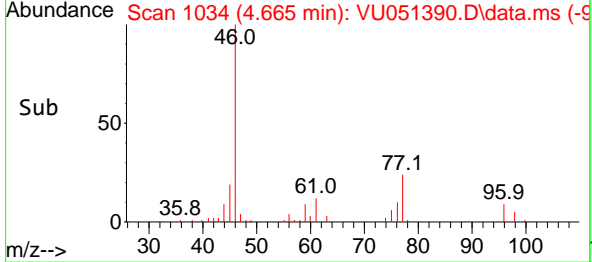
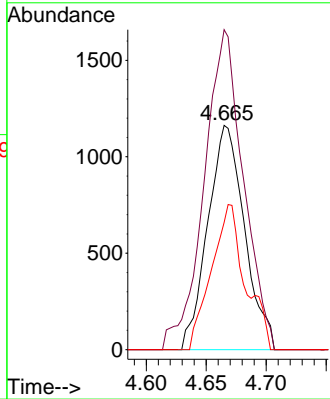
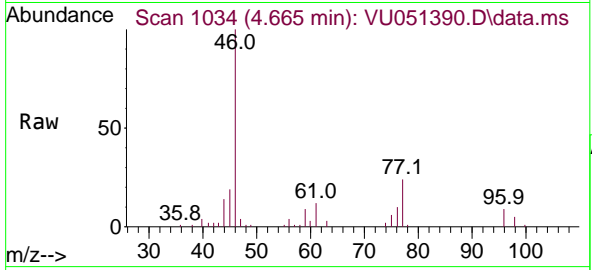


#22
 cis-1,2-Dichloroethene
 Concen: 0.154 ug/L
 RT: 4.665 min Scan# 1034
 Delta R.T. 0.000 min
 Lab File: VU051390.D
 Acq: 12 Oct 2022 14:25

Instrument : MSVOA_U
 ClientSampleId : BGS13

Tgt Ion: 96 Resp: 2478

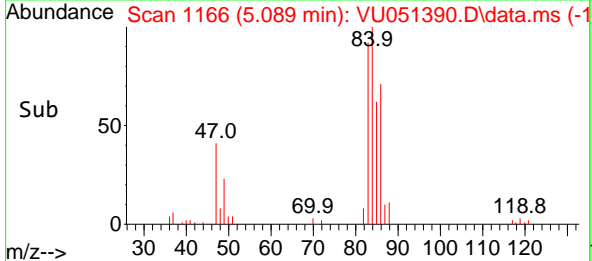
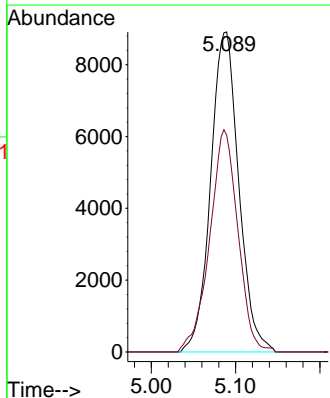
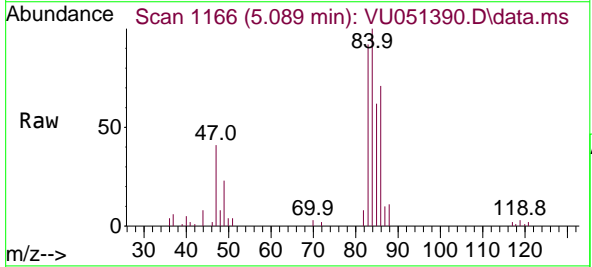
Ion	Ratio	Lower	Upper
96	100		
61	142.6	90.6	168.2
98	56.7	47.5	88.3

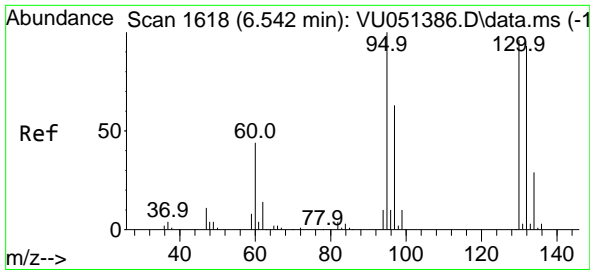


#25
 Chloroform
 Concen: 0.662 ug/L
 RT: 5.089 min Scan# 1166
 Delta R.T. 0.004 min
 Lab File: VU051390.D
 Acq: 12 Oct 2022 14:25

Tgt Ion: 83 Resp: 20663

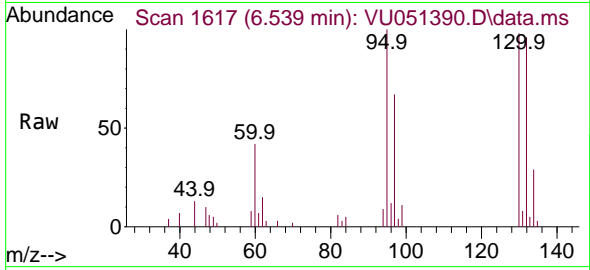
Ion	Ratio	Lower	Upper
83	100		
85	67.8	45.6	84.6



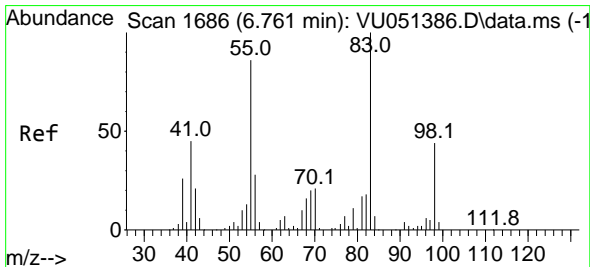
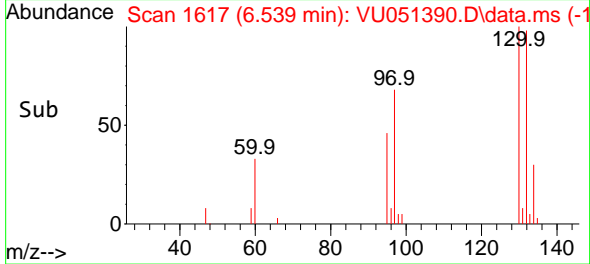
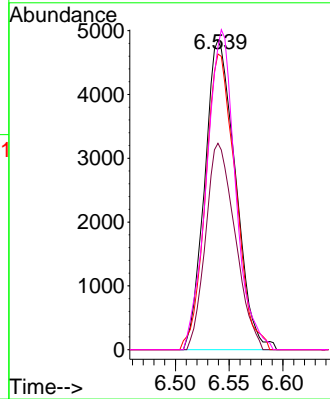


#34
 Trichloroethene
 Concen: 0.548 ug/L
 RT: 6.539 min Scan# 1617
 Delta R.T. -0.003 min
 Lab File: VU051390.D
 Acq: 12 Oct 2022 14:25

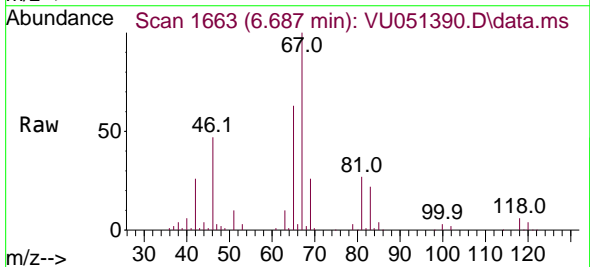
Instrument :
 MSVOA_U
 ClientSampleId :
 BGS13



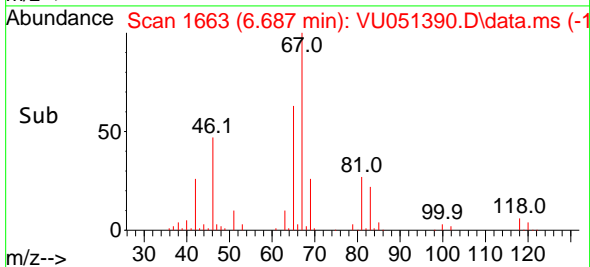
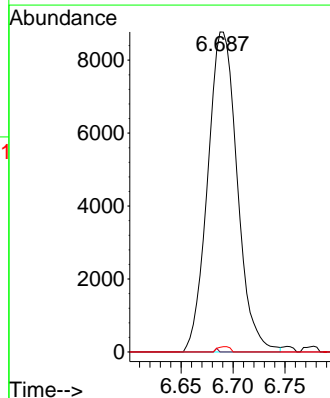
Tgt Ion: 95 Resp: 9656
 Ion Ratio Lower Upper
 95 100
 97 66.7 45.4 84.2
 132 95.5 63.1 117.3
 130 97.8 65.7 121.9

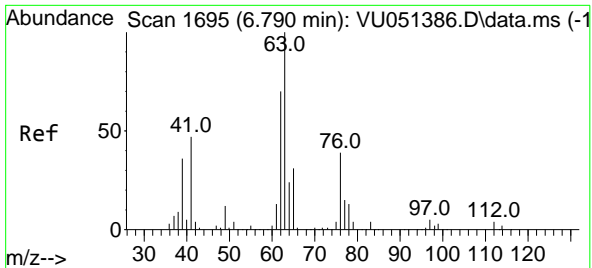


#35
 Methylcyclohexane
 Concen: 0.782 ug/L
 RT: 6.687 min Scan# 1663
 Delta R.T. -0.074 min
 Lab File: VU051390.D
 Acq: 12 Oct 2022 14:25



Tgt Ion: 83 Resp: 17375
 Ion Ratio Lower Upper
 83 100
 55 0.1 65.8 98.6#
 98 0.7 35.9 53.9#

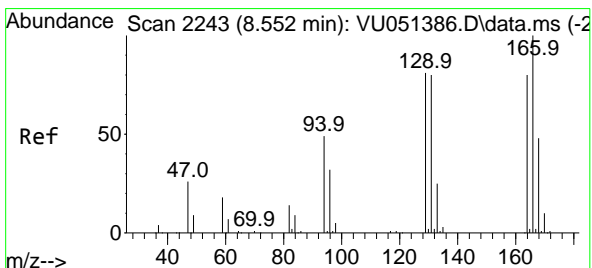
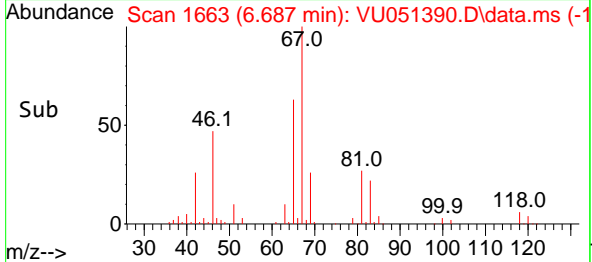
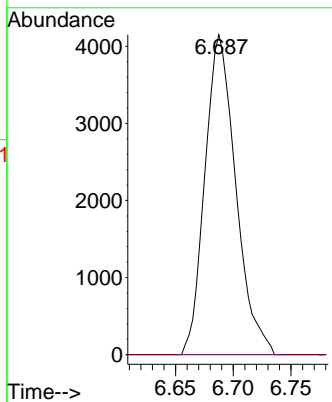
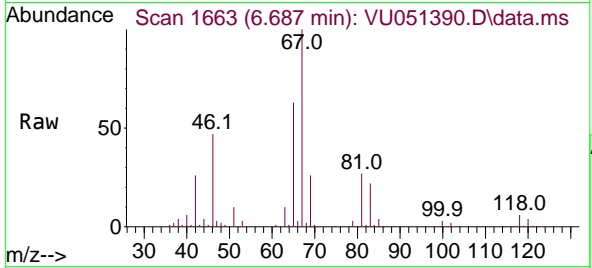




#37
 1,2-Dichloropropane
 Concen: 0.399 ug/L
 RT: 6.687 min Scan# 1663
 Delta R.T. -0.103 min
 Lab File: VU051390.D
 Acq: 12 Oct 2022 14:25

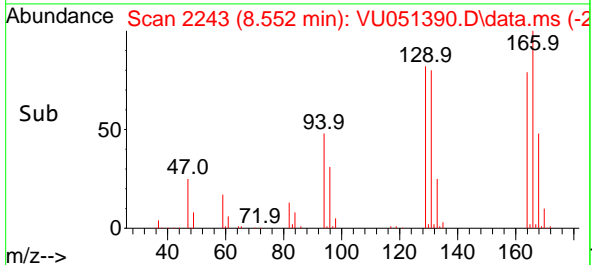
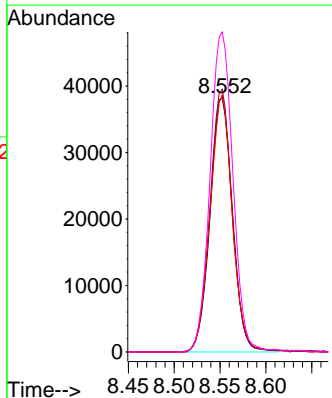
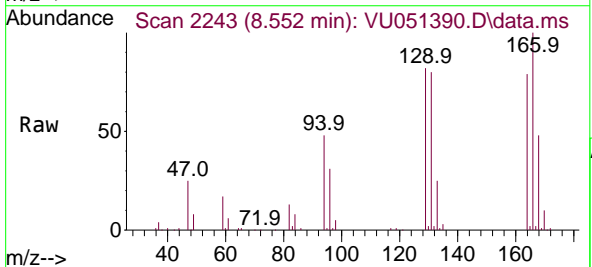
Instrument : MSVOA_U
 ClientSampleId : BGS13

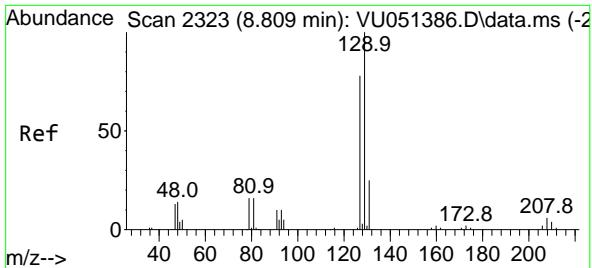
Tgt Ion: 63 Resp: 7721
 Ion Ratio Lower Upper
 63 100
 112 0.0 3.2 4.8#



#47
 Tetrachloroethene
 Concen: 5.036 ug/L
 RT: 8.552 min Scan# 2243
 Delta R.T. 0.000 min
 Lab File: VU051390.D
 Acq: 12 Oct 2022 14:25

Tgt Ion:164 Resp: 65224
 Ion Ratio Lower Upper
 164 100
 129 103.4 71.3 132.3
 131 101.2 66.9 124.3
 166 126.0 90.9 168.7

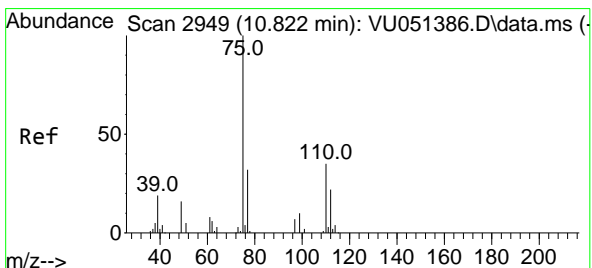
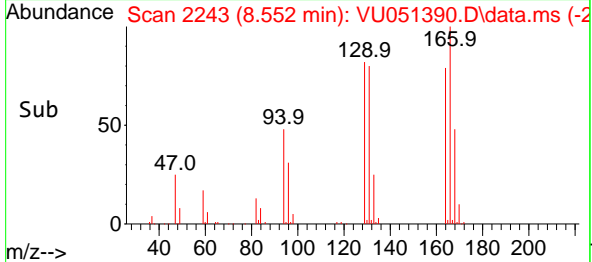
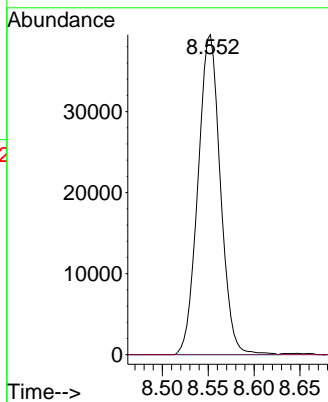
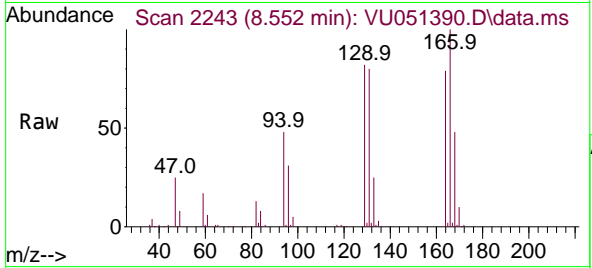




#49
 Dibromochloromethane
 Concen: 4.397 ug/L
 RT: 8.552 min Scan# 21
 Delta R.T. -0.257 min
 Lab File: VU051390.D
 Acq: 12 Oct 2022 14:25

Instrument :
 MSVOA_U
 ClientSampleId :
 BGS13

Tgt Ion:129 Resp: 67093
 Ion Ratio Lower Upper
 129 100
 127 0.0 53.5 99.3#



#61
 1,2,3-Trichloropropane
 Concen: 0.949 ug/L
 RT: 11.806 min Scan# 3255
 Delta R.T. 0.984 min
 Lab File: VU051390.D
 Acq: 12 Oct 2022 14:25

Tgt Ion: 75 Resp: 9666
 Ion Ratio Lower Upper
 75 100
 110 0.7 27.0 40.6#
 77 30.7 26.4 39.6

