

Data Path : Z:\voasrv\HPCHEM1\MSVOA_U\Data\VU101222\
 Data File : VU051399.D
 Acq On : 12 Oct 2022 19:22
 Operator : JC/MD
 Sample : N4991-15
 Misc : 25.0mL/MSVOA_U/WATER
 ALS Vial : 19 Sample Multiplier: 1

Instrument :
 MSVOA_U
 ClientSampleId :

Quant Time: Oct 13 19:22:17 2022
 Quant Method : Z:\voasrv\HPCHEM1\MSVOA_U\Method\SFAMUTR100722WMA.M
 Quant Title : TRACE VOA SFAM1.0
 QLast Update : Thu Oct 13 01:37:29 2022
 Response via : Initial Calibration

Compound	R.T.	QIon	Response	Conc	Units	Dev(Min)

Internal Standards						
1) 1,4-Difluorobenzene	6.247	114	179264	5.000	ug/L	0.00
28) Chlorobenzene-d5	9.417	117	200636	5.000	ug/L	0.00
58) 1,4-Dichlorobenzene-d4	11.812	152	67658	5.000	ug/L	0.00
System Monitoring Compounds						
4) Vinyl Chloride-d3	1.594	65	83241	5.757	ug/L	0.00
Spiked Amount	5.000	Range 40 - 130	Recovery	=	115.200%	
7) Chloroethane-d5	1.909	69	62326	5.016	ug/L	0.00
Spiked Amount	5.000	Range 65 - 130	Recovery	=	100.400%	
11) 1,1-Dichloroethene-d2	2.562	65	31056	5.433	ug/L	0.00
Spiked Amount	5.000	Range 60 - 125	Recovery	=	108.600%	
20) 2-Butanone-d5	4.642	46	146316	45.958	ug/L	0.02
Spiked Amount	50.000	Range 40 - 130	Recovery	=	91.920%	
24) Chloroform-d	5.060	84	125482	4.655	ug/L	0.00
Spiked Amount	5.000	Range 70 - 125	Recovery	=	93.000%	
26) 1,2-Dichloroethane-d4	5.700	65	67900	4.884	ug/L	0.00
Spiked Amount	5.000	Range 70 - 130	Recovery	=	97.600%	
32) Benzene-d6	5.726	84	230561	4.177	ug/L	0.00
Spiked Amount	5.000	Range 70 - 125	Recovery	=	83.600%	
36) 1,2-Dichloropropane-d6	6.690	67	80398	4.289	ug/L	0.00
Spiked Amount	5.000	Range 60 - 140	Recovery	=	85.800%	
41) Toluene-d8	7.896	98	164706	3.335	ug/L	0.00
Spiked Amount	5.000	Range 70 - 130	Recovery	=	66.800%#	
43) trans-1,3-Dichloroprop...	8.179	79	22923	3.722	ug/L	0.00
Spiked Amount	5.000	Range 55 - 130	Recovery	=	74.400%	
46) 2-Hexanone-d5	8.636	63	75871	36.554	ug/L	0.00
Spiked Amount	50.000	Range 45 - 130	Recovery	=	73.100%	
56) 1,1,2,2-Tetrachloroeth...	10.754	84	62323	4.162	ug/L	0.00
Spiked Amount	5.000	Range 65 - 120	Recovery	=	83.200%	
66) 1,2-Dichlorobenzene-d4	12.192	152	49796	4.234	ug/L	0.00
Spiked Amount	5.000	Range 80 - 120	Recovery	=	84.600%	

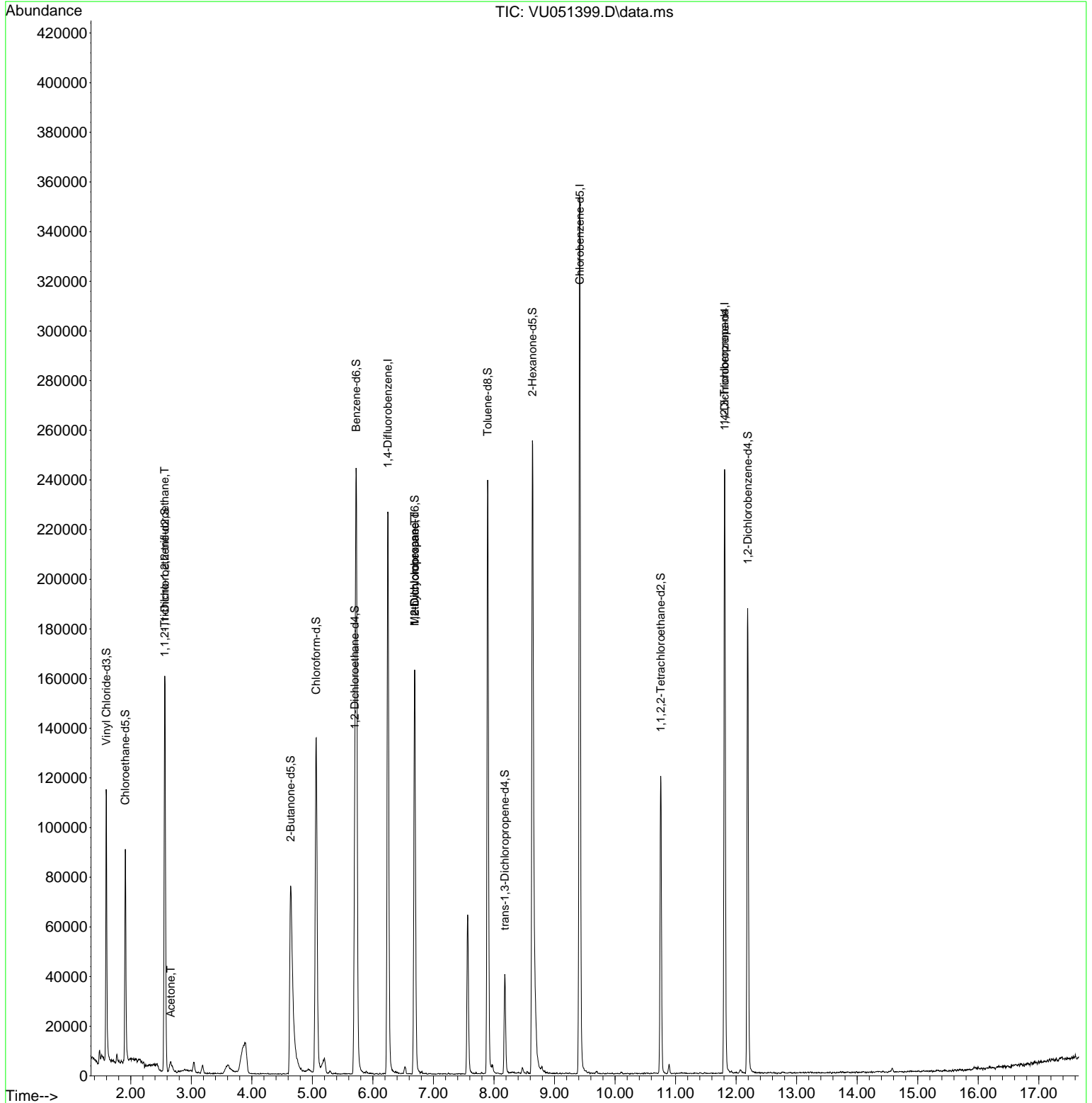
Target Compounds						Qvalue
10) 1,1,2-Trichloro-1,2,2-...	2.559	101	1042	0.075	ug/L #	21
13) Acetone	2.662	43	9424	3.947	ug/L	77
35) Methylcyclohexane	6.690	83	17803	0.844	ug/L #	17
37) 1,2-Dichloropropane	6.690	63	8182	0.446	ug/L #	88
61) 1,2,3-Trichloropropane	11.809	75	8072	0.945	ug/L #	67

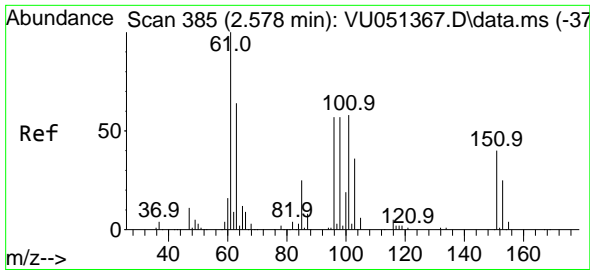
(#) = qualifier out of range (m) = manual integration (+) = signals summed

Data Path : Z:\voasrv\HPCHEM1\MSVOA_U\Data\VU101222\
 Data File : VU051399.D
 Acq On : 12 Oct 2022 19:22
 Operator : JC/MD
 Sample : N4991-15
 Misc : 25.0mL/MSVOA_U/WATER
 ALS Vial : 19 Sample Multiplier: 1

Instrument :
 MSVOA_U
 ClientSampleId :

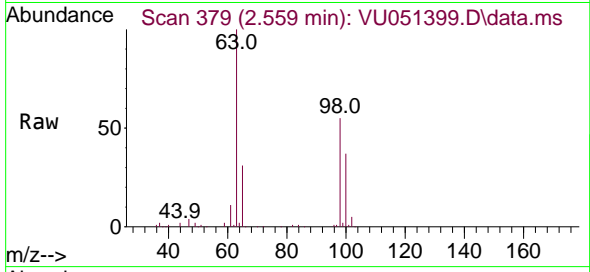
Quant Time: Oct 13 19:22:17 2022
 Quant Method : Z:\voasrv\HPCHEM1\MSVOA_U\Method\SFAMUTR100722WMA.M
 Quant Title : TRACE VOA SFAM1.0
 QLast Update : Thu Oct 13 01:37:29 2022
 Response via : Initial Calibration



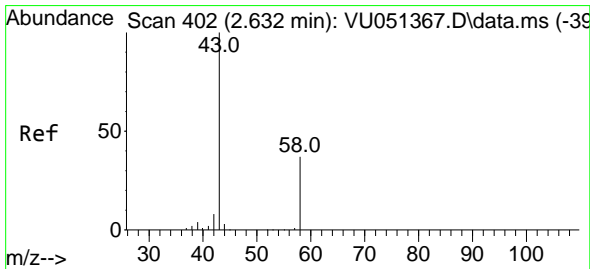
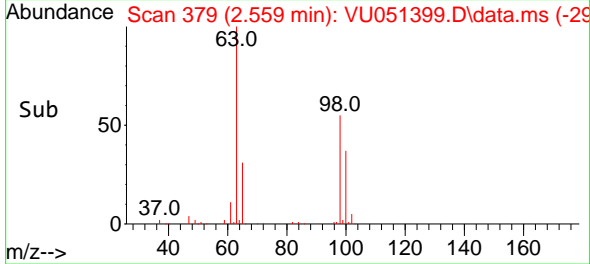
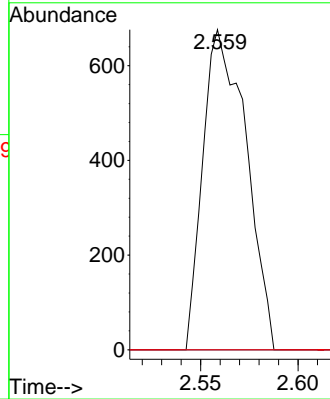


#10
 1,1,2-Trichloro-1,2,2-trifluoroethane
 Concen: 0.075 ug/L
 RT: 2.559 min Scan# 311
 Delta R.T. -0.019 min
 Lab File: VU051399.D
 Acq: 12 Oct 2022 19:22

Instrument :
 MSVOA_U
 ClientSampleId :

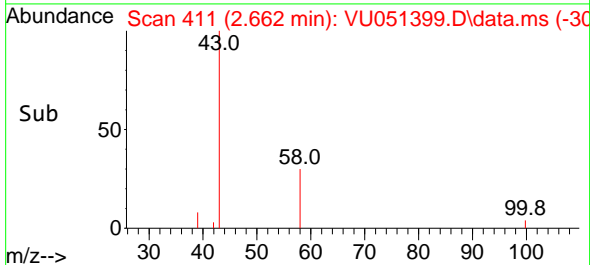
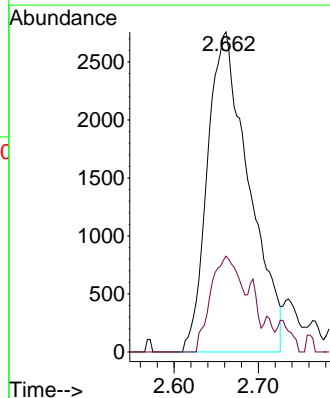
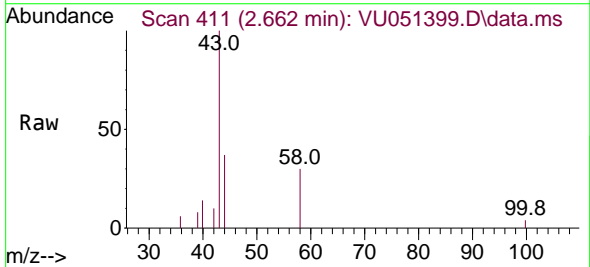


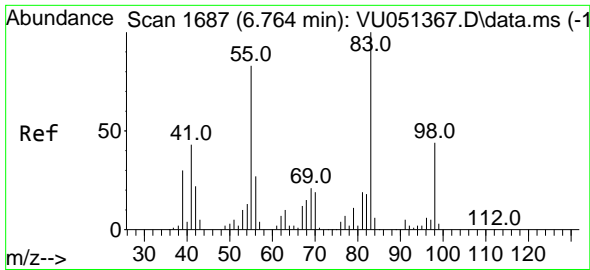
Tgt Ion:101 Resp: 1042
 Ion Ratio Lower Upper
 101 100
 85 0.0 34.6 51.8#
 151 0.0 56.5 84.7#



#13
 Acetone
 Concen: 3.947 ug/L
 RT: 2.662 min Scan# 411
 Delta R.T. 0.035 min
 Lab File: VU051399.D
 Acq: 12 Oct 2022 19:22

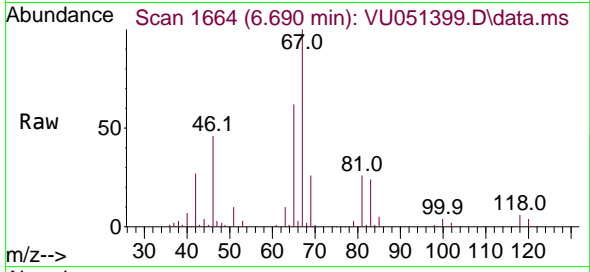
Tgt Ion: 43 Resp: 9424
 Ion Ratio Lower Upper
 43 100
 58 21.3 0.0 68.8



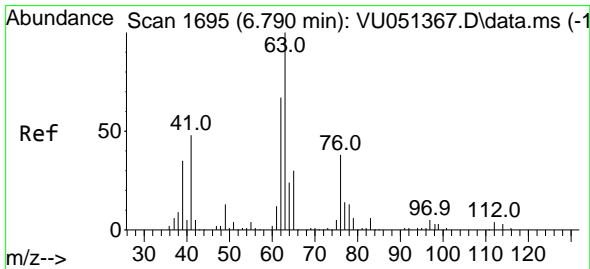
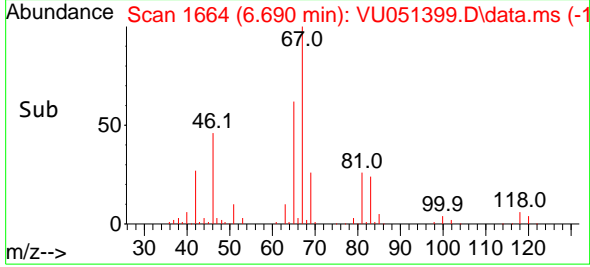
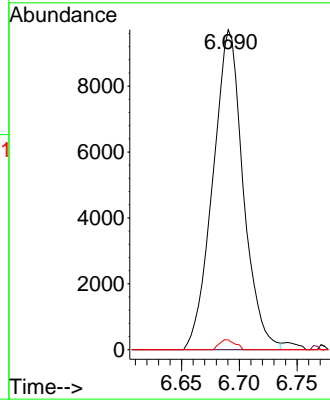


#35
 Methylcyclohexane
 Concen: 0.844 ug/L
 RT: 6.690 min Scan# 1664
 Delta R.T. -0.071 min
 Lab File: VU051399.D
 Acq: 12 Oct 2022 19:22

Instrument : MSVOA_U
 ClientSampleId :

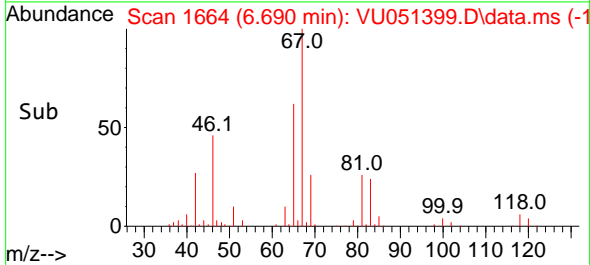
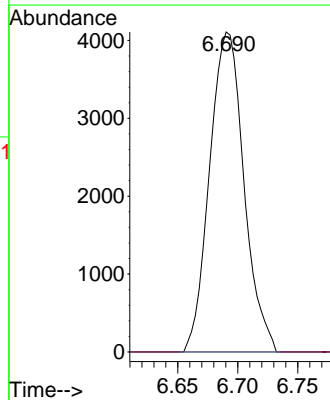
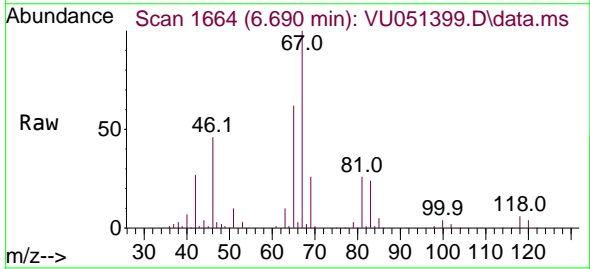


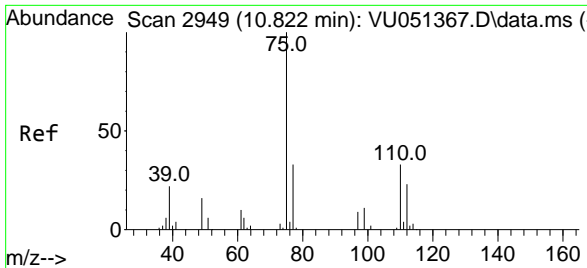
Tgt Ion: 83 Resp: 17803
 Ion Ratio Lower Upper
 83 100
 55 0.2 65.8 98.6#
 98 1.6 35.9 53.9#



#37
 1,2-Dichloropropane
 Concen: 0.446 ug/L
 RT: 6.690 min Scan# 1664
 Delta R.T. -0.100 min
 Lab File: VU051399.D
 Acq: 12 Oct 2022 19:22

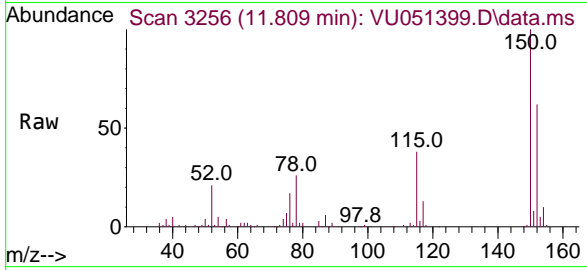
Tgt Ion: 63 Resp: 8182
 Ion Ratio Lower Upper
 63 100
 112 0.0 3.2 4.8#





#61
 1,2,3-Trichloropropane
 Concen: 0.945 ug/L
 RT: 11.809 min Scan# 31
 Delta R.T. 0.987 min
 Lab File: VU051399.D
 Acq: 12 Oct 2022 19:22

Instrument :
 MSVOA_U
 ClientSampleId :



Tgt Ion: 75 Resp: 8072

Ion	Ratio	Lower	Upper
75	100		
110	0.0	27.0	40.6#
77	29.3	26.4	39.6

