

Data File : VU035140.D
 Acq On : 14 Oct 2019 10:03
 Operator : JC/SP
 Sample : VSTDCCC005
 Misc : 25.0mL/MSVOA_U/WATER
 ALS Vial : 2 Sample Multiplier: 1

Instrument :
 MSVOA_U
 Client Sampled :
 VSTD00518

Quant Time: Oct 15 07:00:52 2019
 Quant Method : Z:\VOASRV\HPCHEM1\MSVOA_U\METHOD\SOMUTR100719WMA.M
 Quant Title : TRACE VOA SOM01.0
 QLast Update : Tue Oct 15 02:41:23 2019
 Response via : Initial Calibration

Internal Standards	R.T.	QIon	Response	Conc	Units	Dev(Min)
1) 1,4-Difluorobenzene	5.86	114	162830	5.00	ug/L	0.00
28) Chlorobenzene-d5	9.07	117	167806	5.00	ug/L	0.00
60) 1,4-Dichlorobenzene-d4	11.47	152	81858	5.00	ug/L	0.00

System Monitoring Compounds

4) Vinyl Chloride-d3	1.39	65	44306	4.60	ug/L	0.00
Spiked Amount	5.000	Range	40 - 130	Recovery	=	92.00%
7) Chloroethane-d5	1.67	69	43414	4.83	ug/L	0.00
Spiked Amount	5.000	Range	65 - 130	Recovery	=	96.60%
11) 1,1-Dichloroethene-d2	2.26	63	97976	4.83	ug/L	0.00
Spiked Amount	5.000	Range	60 - 125	Recovery	=	96.60%
20) 2-Butanone-d5	4.16	46	148995	52.56	ug/L	0.00
Spiked Amount	50.000	Range	40 - 130	Recovery	=	105.12%
24) Chloroform-d	4.62	84	89873	4.99	ug/L	0.00
Spiked Amount	5.000	Range	70 - 125	Recovery	=	99.80%
26) 1,2-Dichloroethane-d4	5.29	65	51492	4.78	ug/L	0.00
Spiked Amount	5.000	Range	70 - 130	Recovery	=	95.60%
32) Benzene-d6	5.32	84	172941	4.40	ug/L	0.00
Spiked Amount	5.000	Range	70 - 125	Recovery	=	88.00%
36) 1,2-Dichloropropane-d6	6.31	67	59910	4.55	ug/L	0.00
Spiked Amount	5.000	Range	60 - 140	Recovery	=	91.00%
41) Toluene-d8	7.54	98	162923	4.28	ug/L	0.00
Spiked Amount	5.000	Range	70 - 130	Recovery	=	85.60%
43) trans-1,3-Dichloropropene-	7.83	79	21181	4.48	ug/L	0.00
Spiked Amount	5.000	Range	55 - 130	Recovery	=	89.60%
46) 2-Hexanone-d5	8.30	63	107614	47.80	ug/L	0.00
Spiked Amount	50.000	Range	45 - 130	Recovery	=	95.60%
57) 1,1,2,2-Tetrachloroethane-	10.41	84	54581	4.92	ug/L	0.00
Spiked Amount	5.000	Range	65 - 120	Recovery	=	98.40%
64) 1,2-Dichlorobenzene-d4	11.84	152	58856	4.26	ug/L	0.00
Spiked Amount	5.000	Range	80 - 120	Recovery	=	85.20%

Target Compounds

						Qvalue
2) Dichlorodifluoromethane	1.20	85	74419	5.001	ug/L	99
3) Chloromethane	1.32	50	79003	4.840	ug/L	100
5) Vinyl chloride	1.40	62	81860	5.105	ug/L	100
6) Bromomethane	1.62	94	45803	5.139	ug/L	99
8) Chloroethane	1.69	64	49115	5.107	ug/L	96
9) Trichlorofluoromethane	1.88	101	104788	5.404	ug/L	99
10) 1,1,2-Trichloro-1,2,2-trif	2.28	101	58350	5.240	ug/L	97
12) 1,1-Dichloroethene	2.27	96	52343	5.005	ug/L	84
13) Acetone	2.31	43	122880	52.931	ug/L	95
14) Carbon disulfide	2.46	76	168841	4.851	ug/L	99
15) Methyl Acetate	2.60	43	31876	5.158	ug/L	94
16) Methylene chloride	2.68	84	65413	5.052	ug/L	86
17) Methyl tert-butyl Ether	2.98	73	150221	5.265	ug/L	97
18) trans-1,2-Dichloroethene	2.96	96	55997	5.000	ug/L	89
19) 1,1-Dichloroethane	3.42	63	119090	5.350	ug/L	98
21) 2-Butanone	4.25	43	174439	52.764	ug/L	96
22) cis-1,2-Dichloroethene	4.20	96	61422	4.917	ug/L	88

Data File : VU035140.D
 Acq On : 14 Oct 2019 10:03
 Operator : JC/SP
 Sample : VSTDCCC005
 Misc : 25.0mL/MSVOA_U/WATER
 ALS Vial : 2 Sample Multiplier: 1

Instrument :
 MSVOA_U
 ClientSampleId :
 VSTD00518

Quant Time: Oct 15 07:00:52 2019
 Quant Method : Z:\VOASRV\HPCHEM1\MSVOA_U\METHOD\SOMUTR100719WMA.M
 Quant Title : TRACE VOA SOM01.0
 QLast Update : Tue Oct 15 02:41:23 2019
 Response via : Initial Calibration

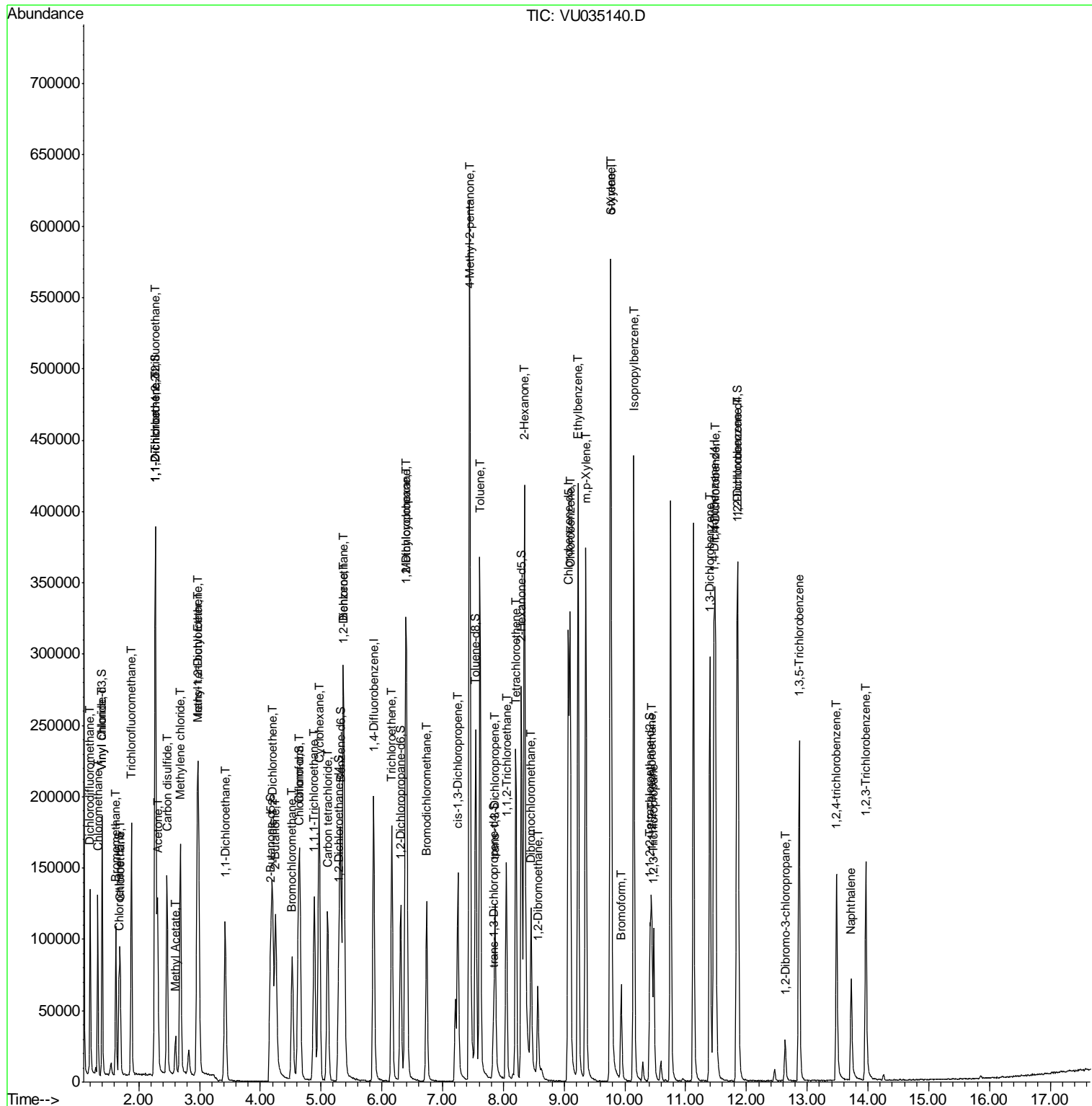
Internal Standards	R.T.	QIon	Response	Conc	Units	Dev(Min)
23) Bromochloromethane	4.52	128	28382	5.421	ug/L	92
25) Chloroform	4.65	83	128107	5.122	ug/L	97
27) 1,2-Dichloroethane	5.38	62	76427	5.233	ug/L	98
29) 1,1,1-Trichloroethane	4.89	97	95886	5.088	ug/L	97
30) Cyclohexane	4.97	56	93288	4.502	ug/L	95
31) Carbon tetrachloride	5.11	117	85282	5.219	ug/L	98
33) Benzene	5.36	78	251369	4.973	ug/L	100
34) Trichloroethene	6.16	95	62588	4.801	ug/L	99
35) Methylcyclohexane	6.39	83	96428	4.567	ug/L	96
37) 1,2-Dichloropropane	6.41	63	71693	5.258	ug/L	98
38) Bromodichloromethane	6.74	83	83112	5.200	ug/L	97
39) cis-1,3-Dichloropropene	7.25	75	91119	4.933	ug/L	99
40) 4-Methyl-2-pentanone	7.44	43	440477	51.328	ug/L	94
42) Toluene	7.62	91	273845	5.190	ug/L	98
44) trans-1,3-Dichloropropene	7.86	75	74051	5.176	ug/L	98
45) 1,1,2-Trichloroethane	8.05	97	48131	5.317	ug/L	95
47) Tetrachloroethene	8.21	164	50712	4.806	ug/L	96
48) 2-Hexanone	8.35	43	293091	49.813	ug/L	95
49) Dibromochloromethane	8.46	129	56320	5.382	ug/L	100
50) 1,2-Dibromoethane	8.57	107	45054	5.207	ug/L	99
51) Chlorobenzene	9.10	112	170005	4.972	ug/L	99
52) Ethylbenzene	9.23	91	287859	4.940	ug/L	99
53) m,p-Xylene	9.36	106	105727	4.912	ug/L	99
54) o-Xylene	9.76	106	104182	4.949	ug/L	96
55) Styrene	9.77	104	175511	5.148	ug/L	100
56) Isopropylbenzene	10.15	105	274680	4.898	ug/L	99
58) 1,1,2,2-Tetrachloroethane	10.44	83	64337	5.226	ug/L	99
59) 1,2,3-Trichloropropane	10.48	75	45546	5.161	ug/L	96
61) Bromoform	9.94	173	31010	5.523	ug/L	99
62) 1,3-Dichlorobenzene	11.40	146	127538	5.058	ug/L	99
63) 1,4-Dichlorobenzene	11.49	146	128024	5.030	ug/L	99
65) 1,2-Dichlorobenzene	11.86	146	123555	5.078	ug/L	98
66) 1,2-Dibromo-3-chloropropan	12.64	75	8490	5.490	ug/L	93
67) 1,3,5-Trichlorobenzene	12.87	180	78565	4.601	ug/L	98
68) 1,2,4-trichlorobenzene	13.49	180	51835	4.065	ug/L	98
69) Naphthalene	13.73	128	70665	3.564	ug/L	100
70) 1,2,3-Trichlorobenzene	13.97	180	54599	4.403	ug/L	96

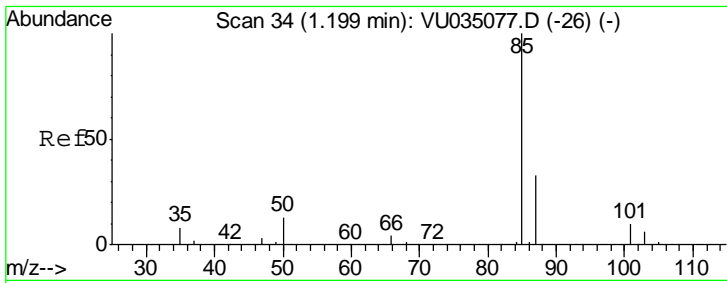
(#) = qualifier out of range (m) = manual integration (+) = signals summed

Data File : VU035140.D
 Acq On : 14 Oct 2019 10:03
 Operator : JC/SP
 Sample : VSTDCCC005
 Misc : 25.0mL/MSVOA_U/WATER
 ALS Vial : 2 Sample Multiplier: 1

Instrument :
 MSVOA_U
 Client Sampled :
 VSTD00518

Quant Time: Oct 15 07:00:52 2019
 Quant Method : Z:\VOASRV\HPCHEM1\MSVOA_U\METHOD\SOMUTR100719WMA.M
 Quant Title : TRACE VOA SOM01.0
 QLast Update : Tue Oct 15 02:41:23 2019
 Response via : Initial Calibration

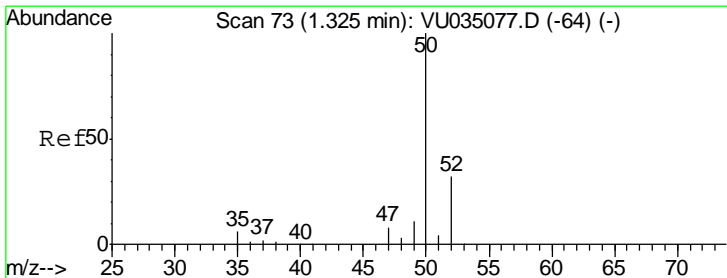
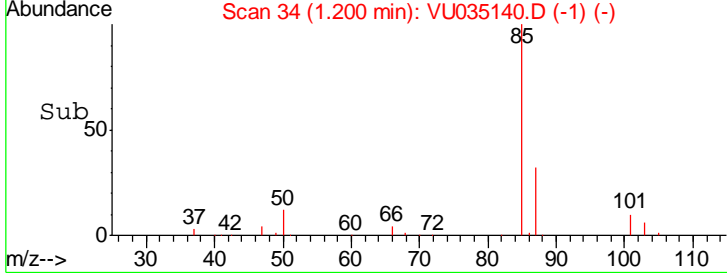
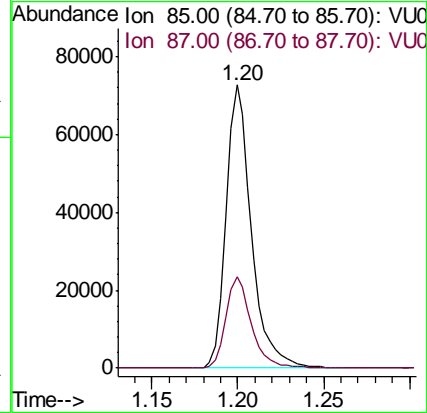
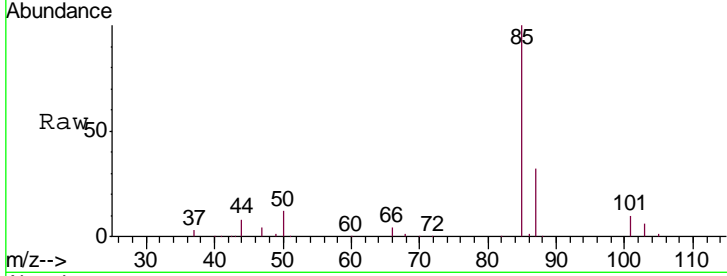




#2
 Dichlorodifluoromethane
 Concen: 5.001 ug/L
 RT: 1.20 min Scan# 34
 Delta R.T. 0.00 min
 Lab File: VU035140.D
 Acq: 14 Oct 2019 10:03

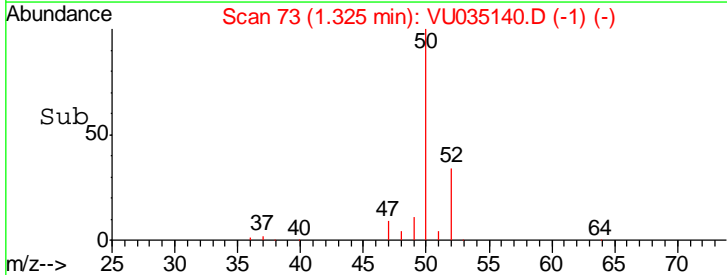
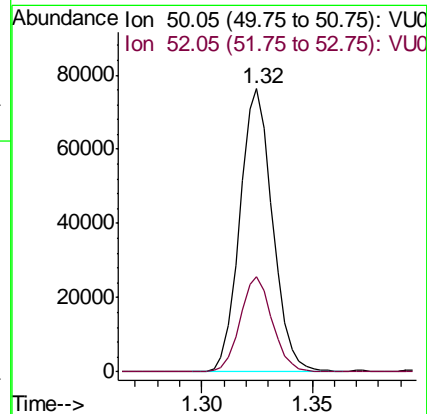
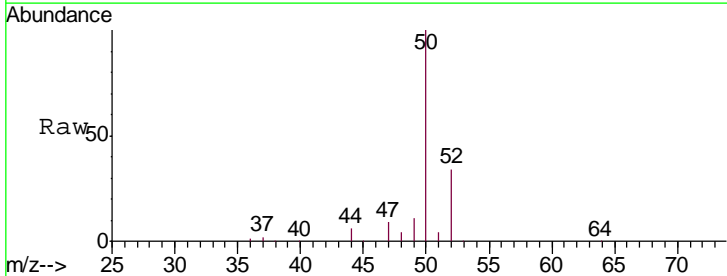
Instrument :
 MSVOA_U
 ClientSampled :
 VSTD00518

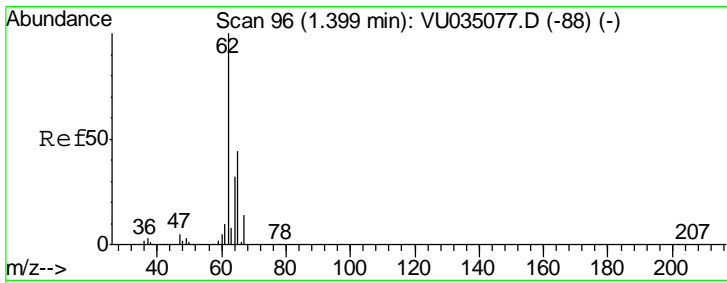
Tgt Ion: 85 Resp: 74419
 Ion Ratio Lower Upper
 85 100
 87 32.6 26.3 39.5



#3
 Chloromethane
 Concen: 4.840 ug/L
 RT: 1.32 min Scan# 73
 Delta R.T. 0.00 min
 Lab File: VU035140.D
 Acq: 14 Oct 2019 10:03

Tgt Ion: 50 Resp: 79003
 Ion Ratio Lower Upper
 50 100
 52 33.5 23.3 43.3

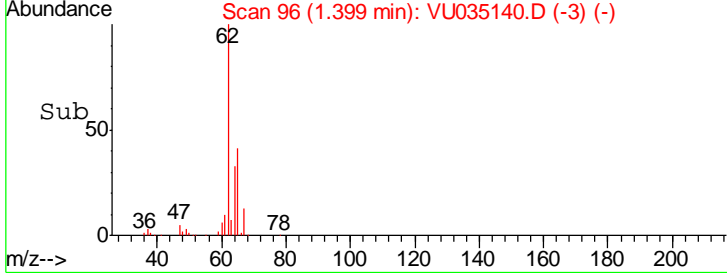
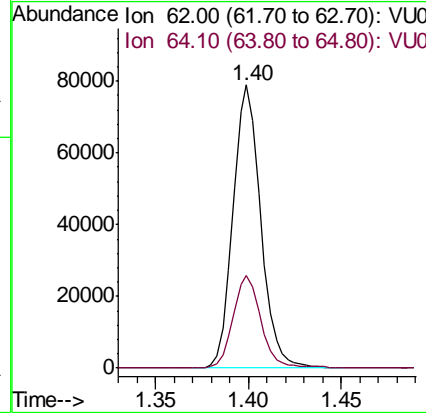
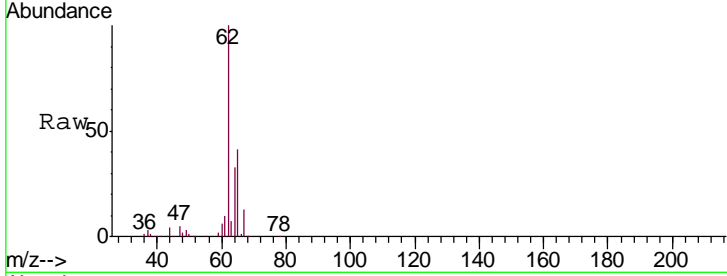




#5
 Vinyl chloride
 Concen: 5.105 ug/L
 RT: 1.40 min Scan# 96
 Delta R.T. 0.00 min
 Lab File: VU035140.D
 Acq: 14 Oct 2019 10:03

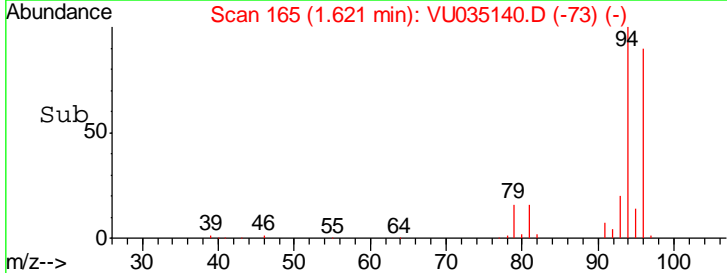
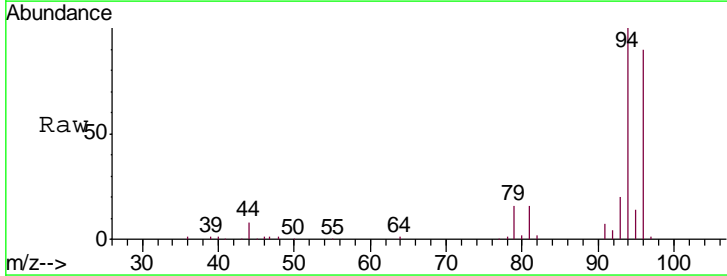
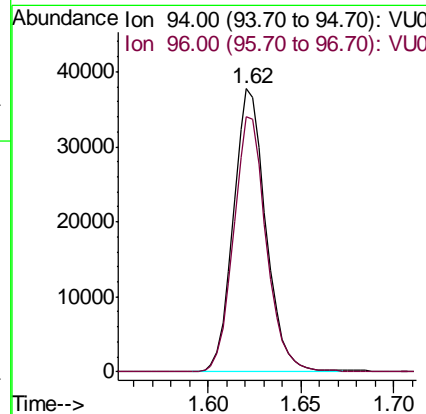
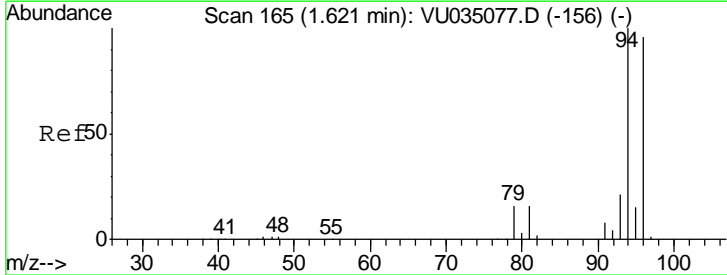
Instrument :
 MSVOA_U
ClientSampled :
 VSTD00518

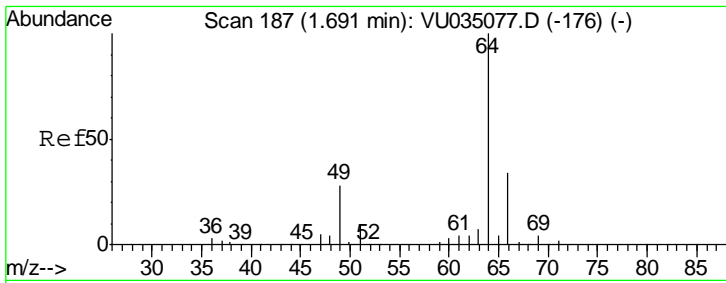
Tgt Ion	Resp	Lower	Upper
62	100		
64	32.8	22.8	42.4



#6
 Bromomethane
 Concen: 5.139 ug/L
 RT: 1.62 min Scan# 165
 Delta R.T. -0.00 min
 Lab File: VU035140.D
 Acq: 14 Oct 2019 10:03

Tgt Ion	Resp	Lower	Upper
94	100		
96	90.1	62.4	116.0

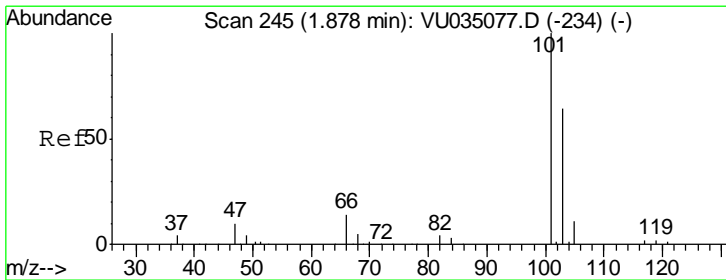
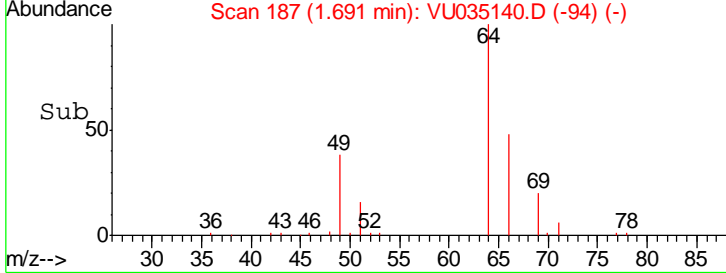
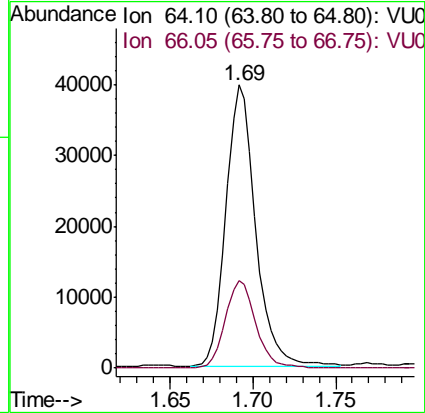
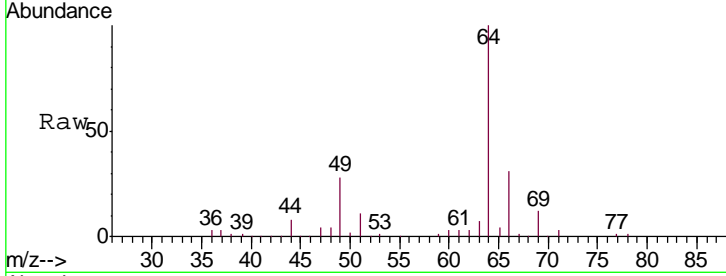




#8
 Chloroethane
 Concen: 5.107 ug/L
 RT: 1.69 min Scan# 187
 Delta R.T. 0.00 min
 Lab File: VU035140.D
 Acq: 14 Oct 2019 10:03

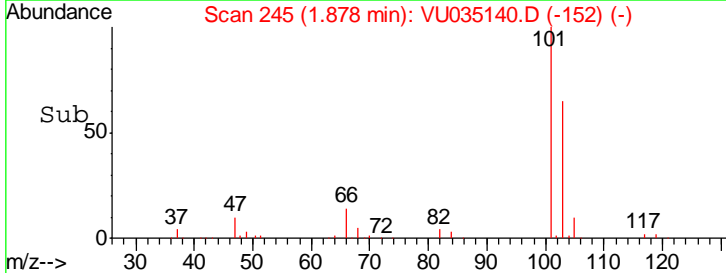
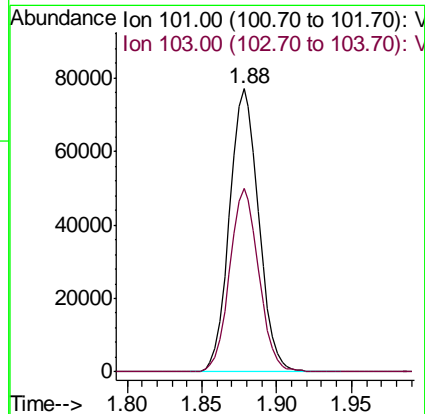
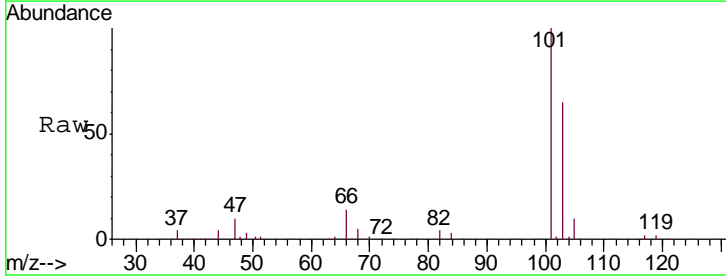
Instrument :
 MSVOA_U
 ClientSampled :
 VSTD00518

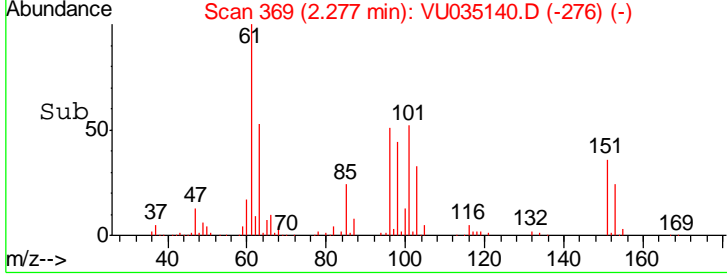
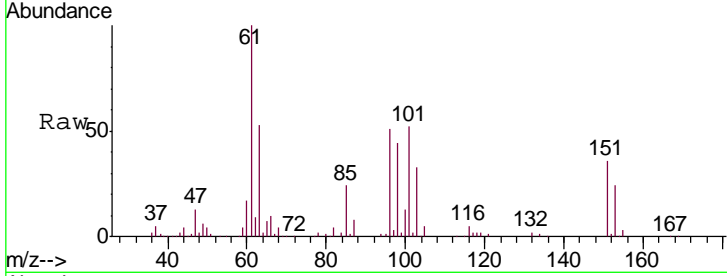
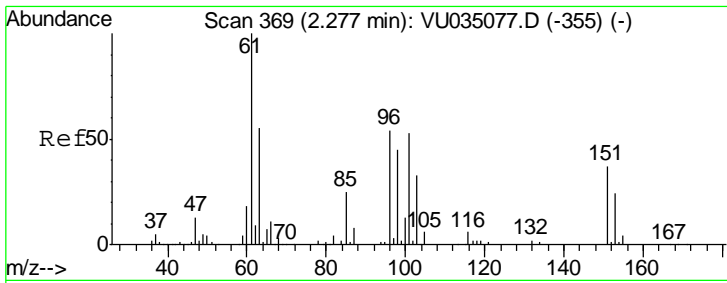
Tgt Ion: 64 Resp: 49115
 Ion Ratio Lower Upper
 64 100
 66 30.9 23.2 43.2



#9
 Trichlorofluoromethane
 Concen: 5.404 ug/L
 RT: 1.88 min Scan# 245
 Delta R.T. 0.00 min
 Lab File: VU035140.D
 Acq: 14 Oct 2019 10:03

Tgt Ion: 101 Resp: 104788
 Ion Ratio Lower Upper
 101 100
 103 64.6 52.2 78.4

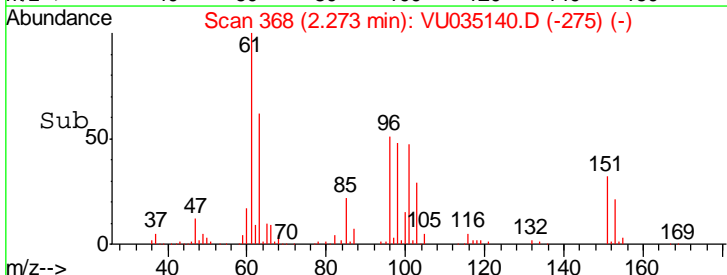
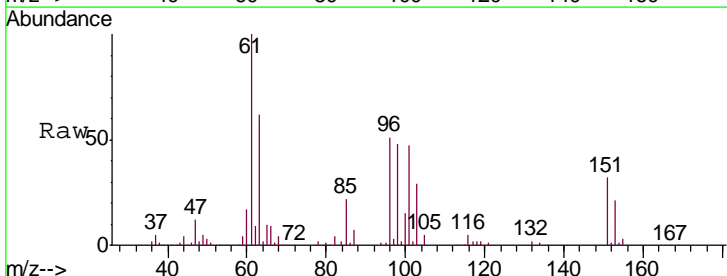
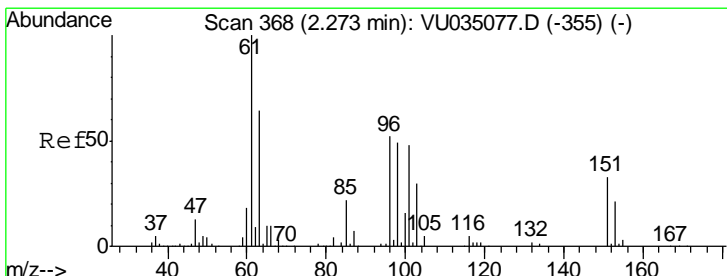
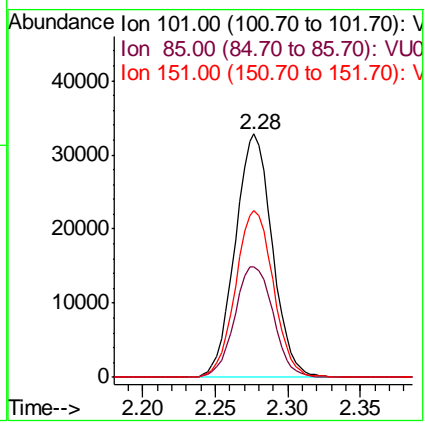




#10
 1,1,2-Trichloro-1,2,2-trifluoroethane
 Concen: 5.240 ug/L
 RT: 2.28 min Scan# 369
 Delta R.T. 0.00 min
 Lab File: VU035140.D
 Acq: 14 Oct 2019 10:03

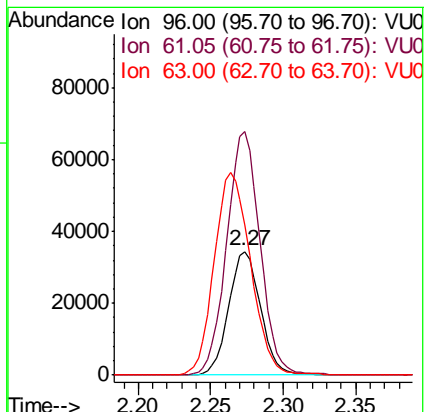
Instrument : MSVOA_U
 ClientSampled : VSTD00518

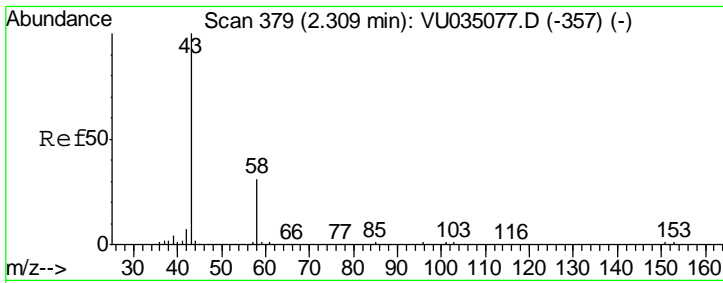
Tgt Ion	Resp	Lower	Upper
101	58350		
85	47.1	37.4	56.0
151	69.6	58.6	87.8



#12
 1,1-Dichloroethene
 Concen: 5.005 ug/L
 RT: 2.27 min Scan# 368
 Delta R.T. 0.00 min
 Lab File: VU035140.D
 Acq: 14 Oct 2019 10:03

Tgt Ion	Resp	Lower	Upper
96	52343		
61	196.5	129.3	240.1
63	121.6	108.9	202.3

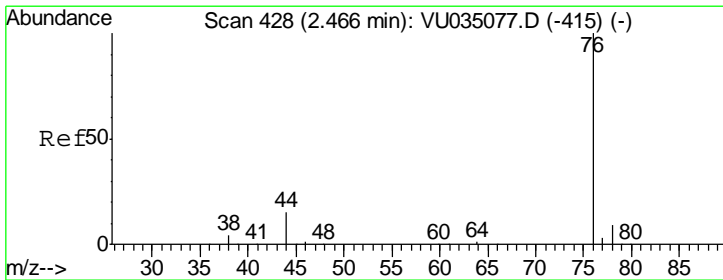
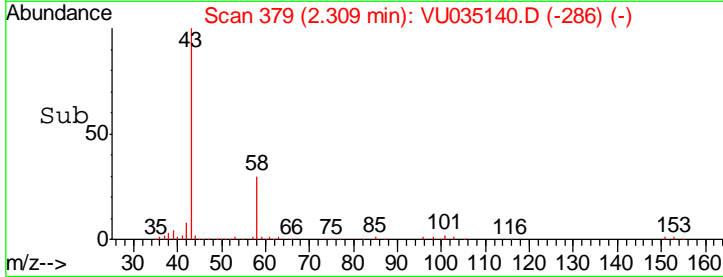
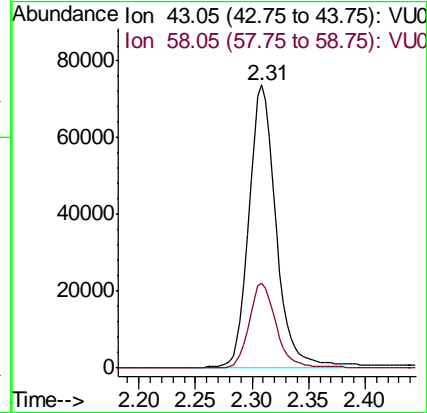
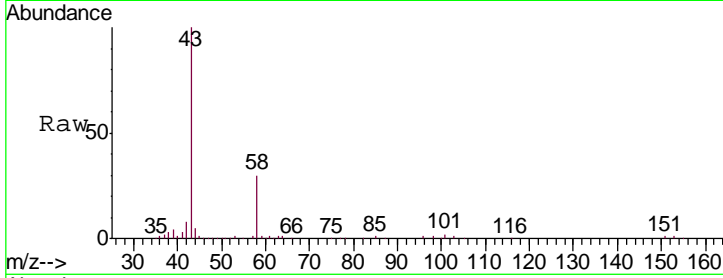




#13
 Acetone
 Concen: 52.931 ug/L
 RT: 2.31 min Scan# 379
 Delta R.T. 0.00 min
 Lab File: VU035140.D
 Acq: 14 Oct 2019 10:03

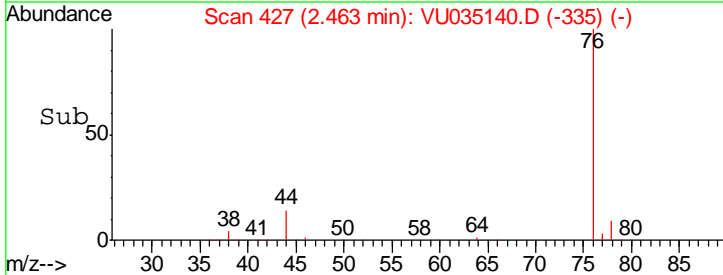
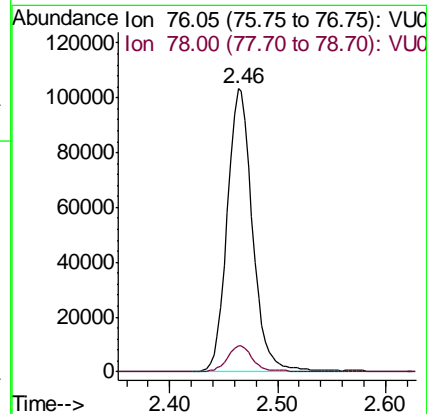
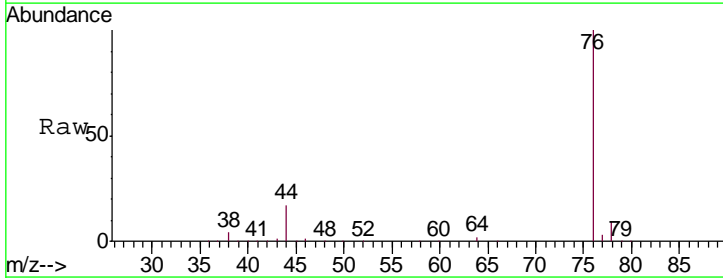
Instrument :
 MSVOA_U
 ClientSampled :
 VSTD00518

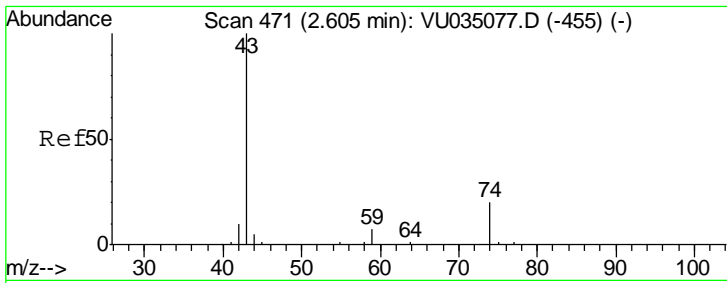
Tgt Ion	Resp	Lower	Upper
43	122880		
58	30.3	0.0	66.6



#14
 Carbon disulfide
 Concen: 4.851 ug/L
 RT: 2.46 min Scan# 427
 Delta R.T. -0.00 min
 Lab File: VU035140.D
 Acq: 14 Oct 2019 10:03

Tgt Ion	Resp	Lower	Upper
76	168841		
78	9.2	7.1	10.7

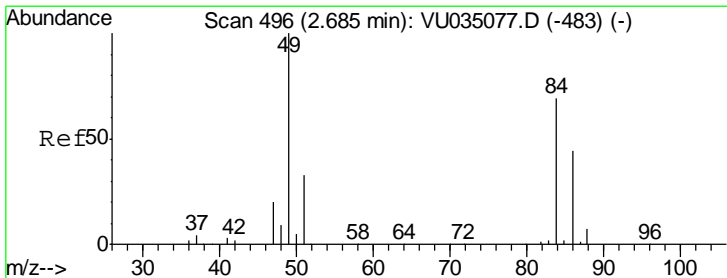
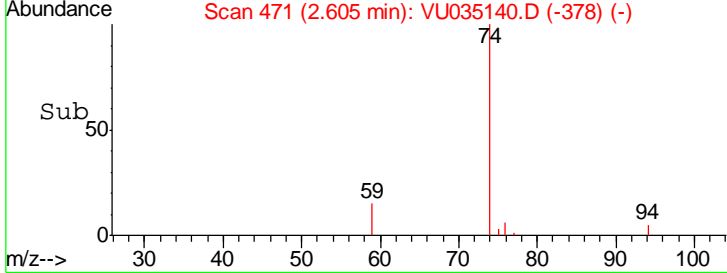
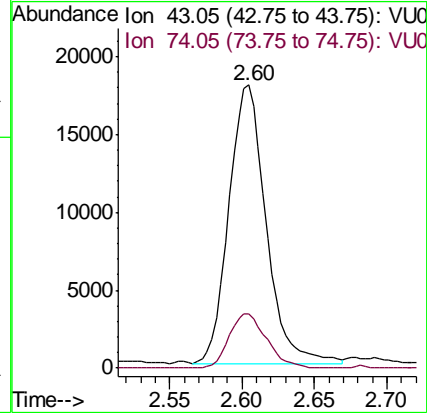
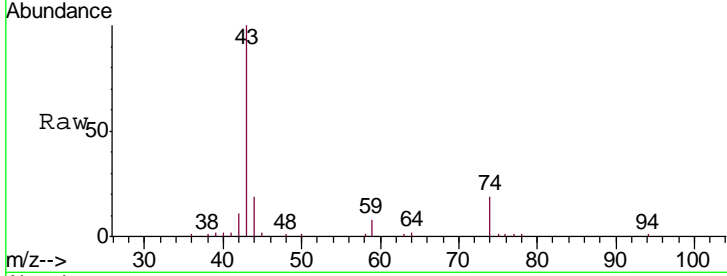




#15
 Methyl Acetate
 Concen: 5.158 ug/L
 RT: 2.60 min Scan# 471
 Delta R.T. 0.00 min
 Lab File: VU035140.D
 Acq: 14 Oct 2019 10:03

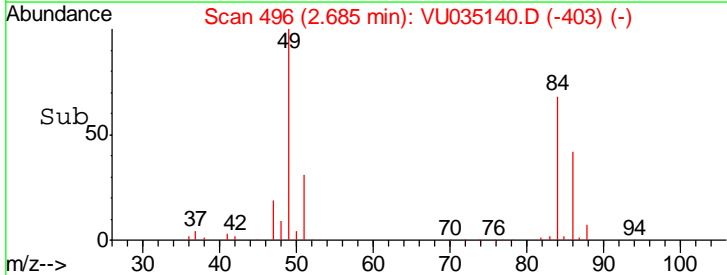
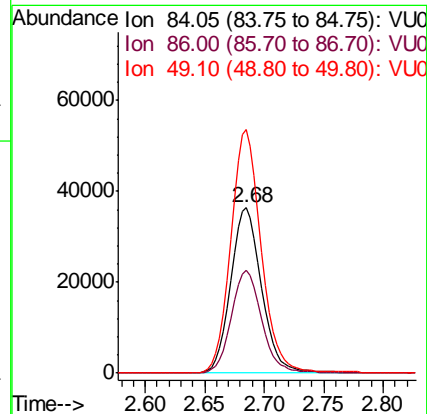
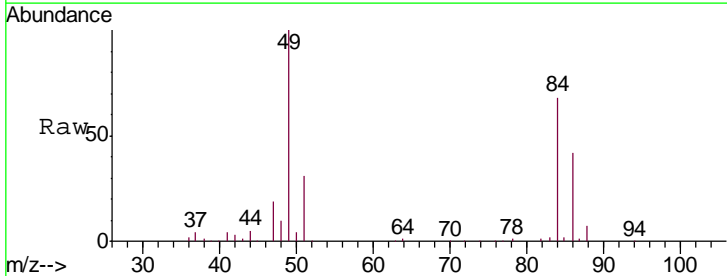
Instrument :
 MSVOA_U
 ClientSampled :
 VSTD00518

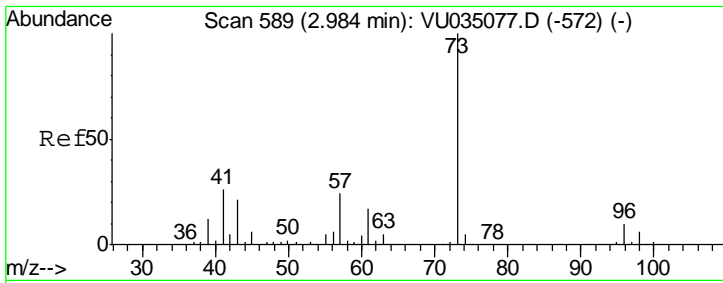
Tgt Ion: 43 Resp: 31876
 Ion Ratio Lower Upper
 43 100
 74 19.7 17.8 26.8



#16
 Methylene chloride
 Concen: 5.052 ug/L
 RT: 2.68 min Scan# 496
 Delta R.T. 0.00 min
 Lab File: VU035140.D
 Acq: 14 Oct 2019 10:03

Tgt Ion: 84 Resp: 65413
 Ion Ratio Lower Upper
 84 100
 86 61.9 42.5 78.9
 49 147.3 86.9 161.3

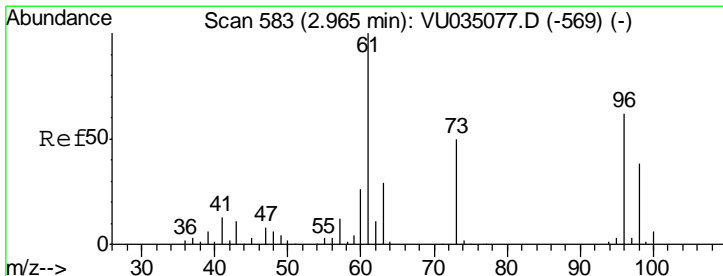
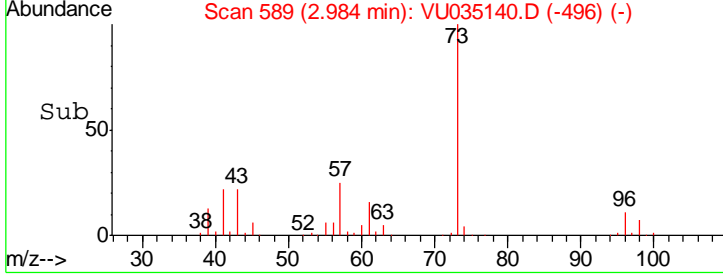
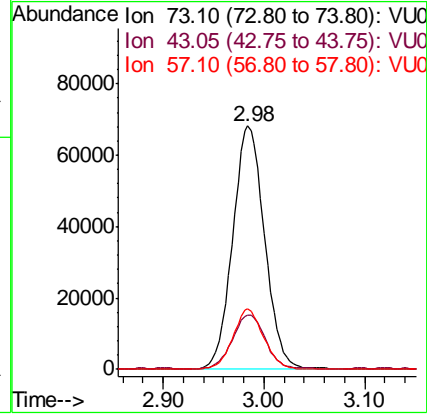
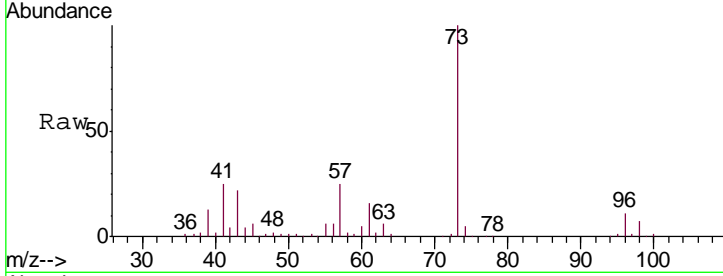




#17
 Methyl tert-butyl Ether
 Concen: 5.265 ug/L
 RT: 2.98 min Scan# 589
 Delta R.T. 0.00 min
 Lab File: VU035140.D
 Acq: 14 Oct 2019 10:03

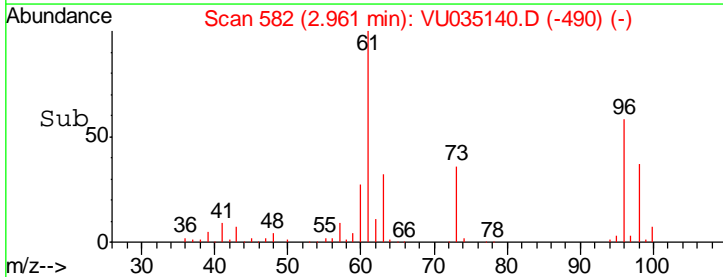
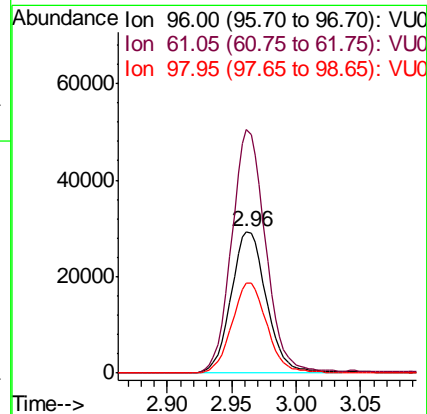
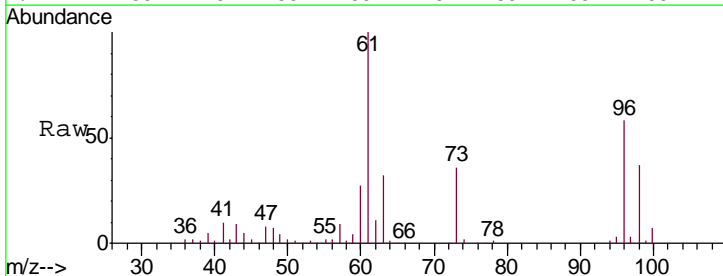
Instrument :
 MSVOA_U
ClientSampled :
 VSTD00518

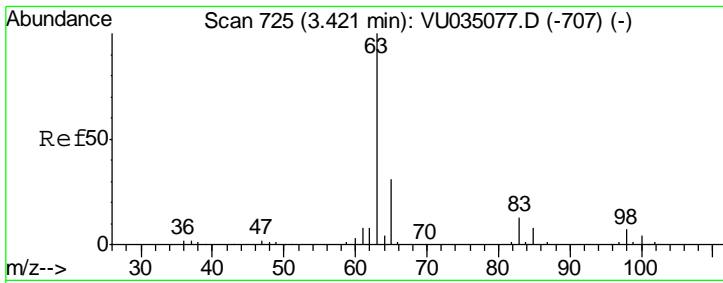
Tgt Ion	Resp	Lower	Upper
73	150221		
43	23.0	16.3	24.5
57	24.0	18.6	28.0



#18
 trans-1,2-Dichloroethene
 Concen: 5.000 ug/L
 RT: 2.96 min Scan# 582
 Delta R.T. -0.00 min
 Lab File: VU035140.D
 Acq: 14 Oct 2019 10:03

Tgt Ion	Resp	Lower	Upper
96	55997		
61	171.6	107.1	198.9
98	63.6	45.4	84.4

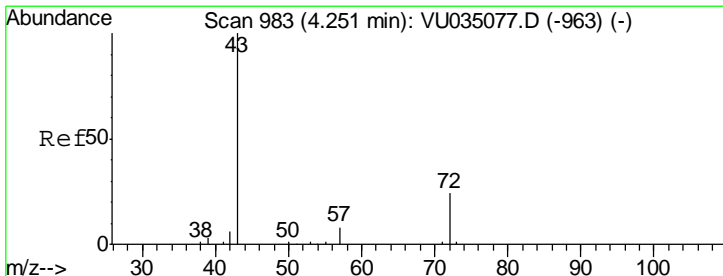
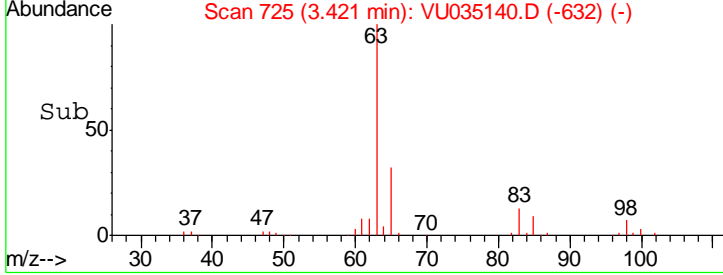
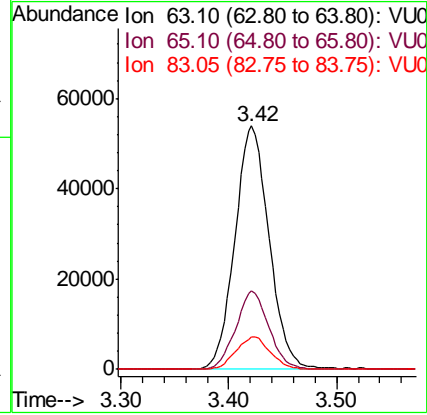
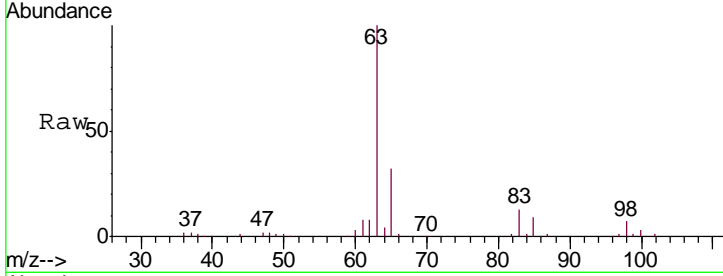




#19
 1,1-Dichloroethane
 Concen: 5.350 ug/L
 RT: 3.42 min Scan# 725
 Delta R.T. 0.00 min
 Lab File: VU035140.D
 Acq: 14 Oct 2019 10:03

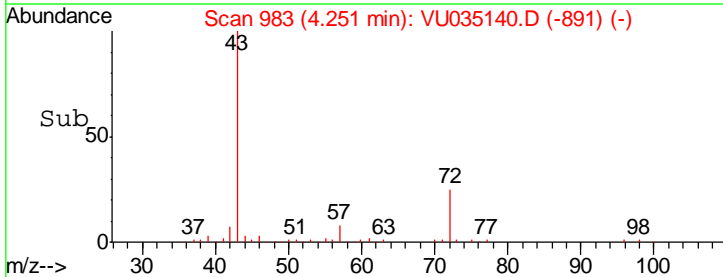
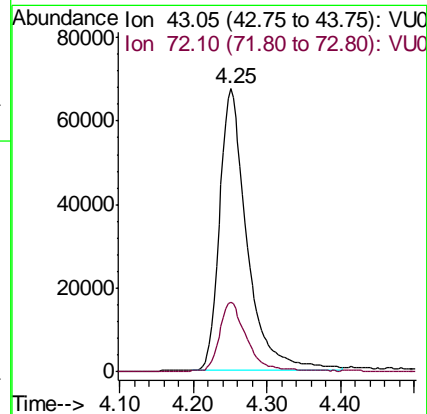
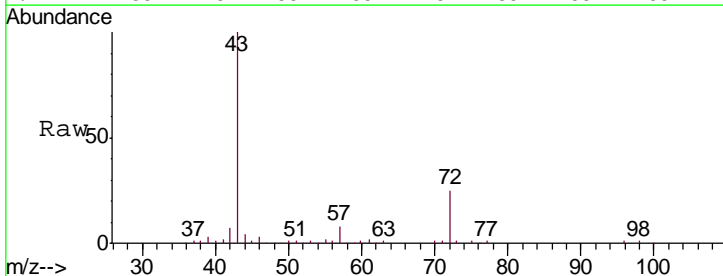
Instrument : MSVOA_U
 ClientSampled : VSTD00518

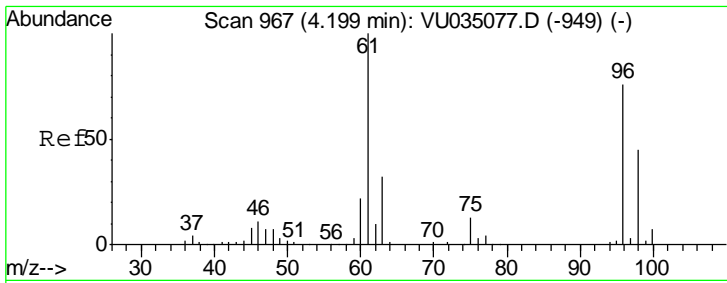
Tgt Ion	Resp	Lower	Upper
63	119090		
65	32.2	21.7	40.3
83	13.1	9.0	16.8



#21
 2-Butanone
 Concen: 52.764 ug/L
 RT: 4.25 min Scan# 983
 Delta R.T. -0.00 min
 Lab File: VU035140.D
 Acq: 14 Oct 2019 10:03

Tgt Ion	Resp	Lower	Upper
43	174439		
72	24.7	13.5	40.4

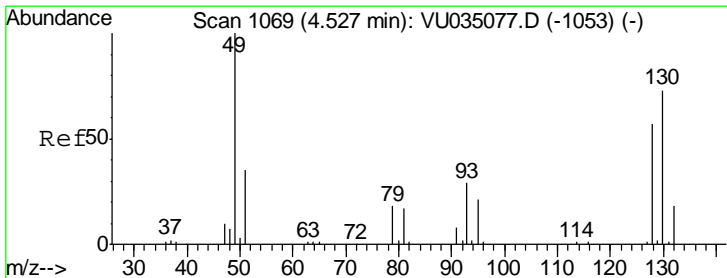
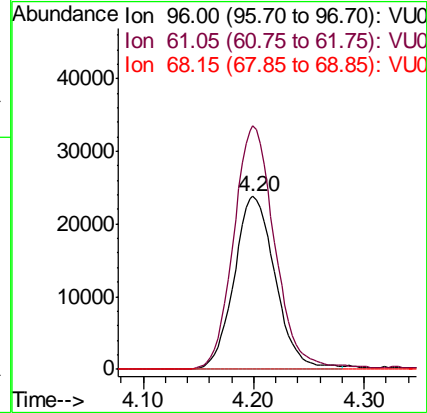
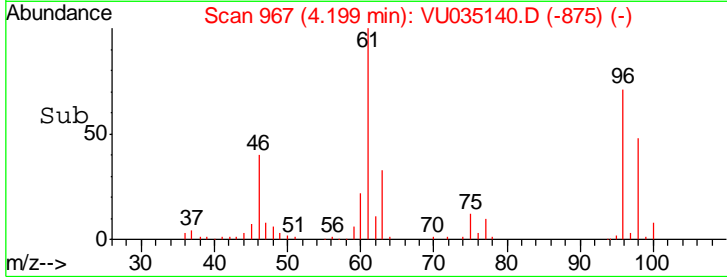
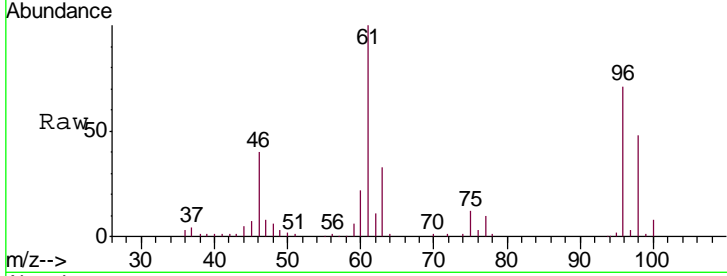




#22
 cis-1,2-Dichloroethene
 Concen: 4.917 ug/L
 RT: 4.20 min Scan# 967
 Delta R.T. -0.00 min
 Lab File: VU035140.D
 Acq: 14 Oct 2019 10:03

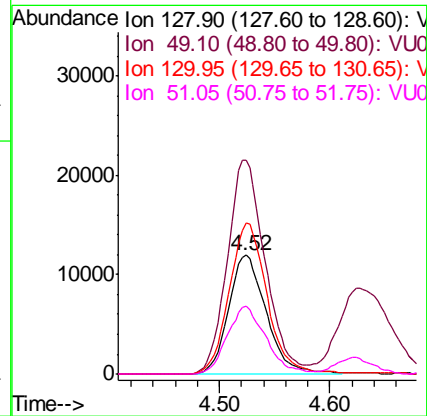
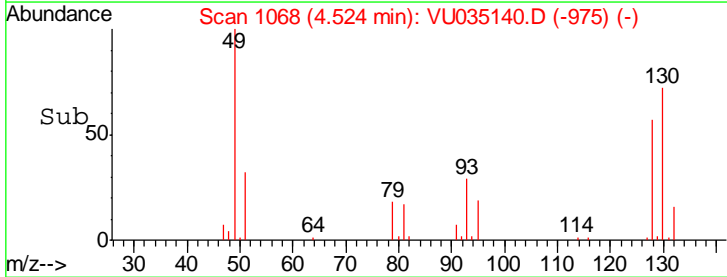
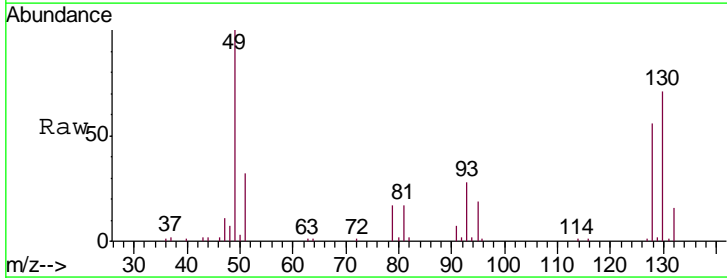
Instrument :
 MSVOA_U
 ClientSampled :
 VSTD00518

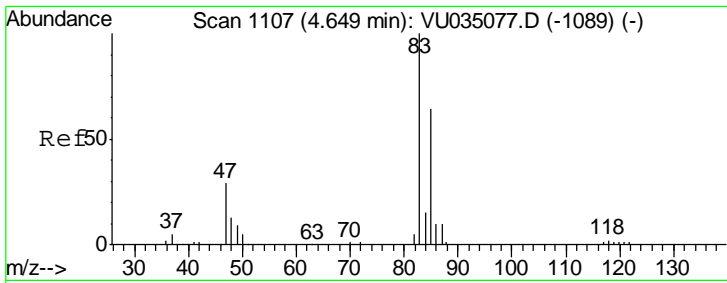
Tgt Ion	Resp	Lower	Upper
96	61422		
61	140.7	89.2	165.6
68	0.0	0.0	0.0



#23
 Bromochloromethane
 Concen: 5.421 ug/L
 RT: 4.52 min Scan# 1068
 Delta R.T. 0.00 min
 Lab File: VU035140.D
 Acq: 14 Oct 2019 10:03

Tgt Ion	Resp	Lower	Upper
128	28382		
49	179.3	110.5	205.3
130	126.5	88.6	164.6
51	57.3	43.2	64.8

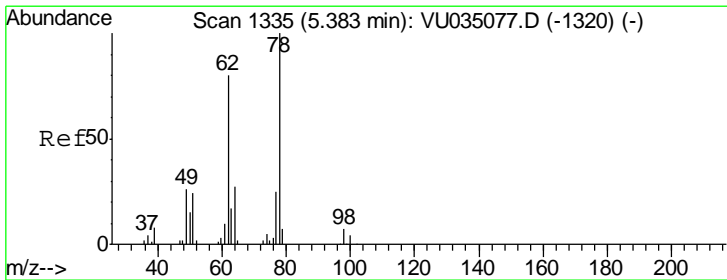
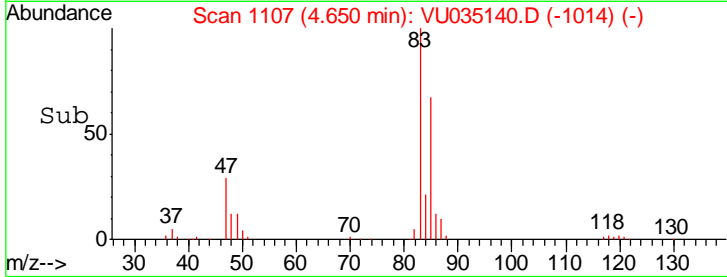
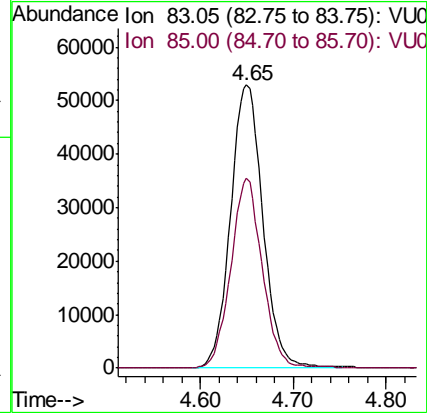
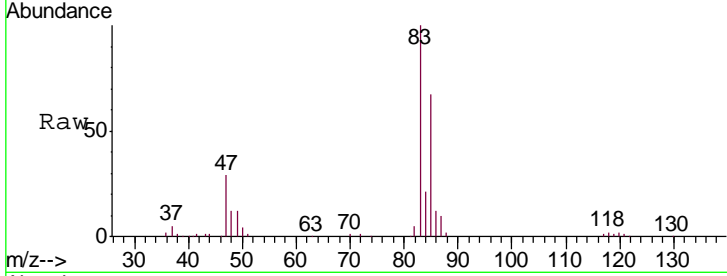




#25
 Chloroform
 Concen: 5.122 ug/L
 RT: 4.65 min Scan# 1107
 Delta R.T. 0.00 min
 Lab File: VU035140.D
 Acq: 14 Oct 2019 10:03

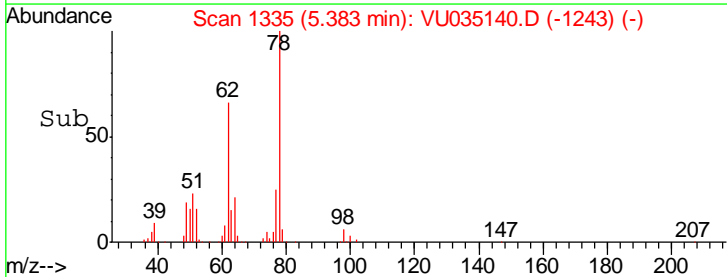
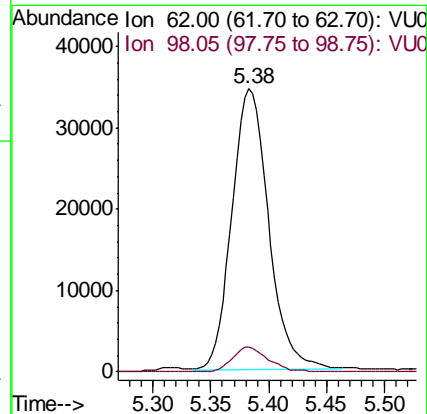
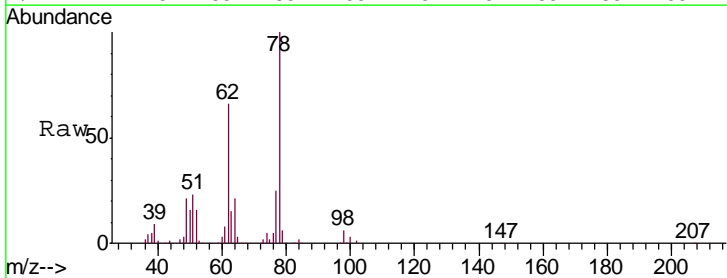
Instrument :
 MSVOA_U
 ClientSampled :
 VSTD00518

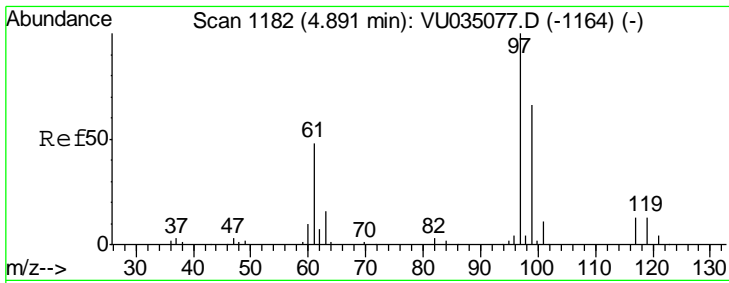
Tgt Ion: 83 Resp: 128107
 Ion Ratio Lower Upper
 83 100
 85 67.2 45.4 84.4



#27
 1,2-Dichloroethane
 Concen: 5.233 ug/L
 RT: 5.38 min Scan# 1335
 Delta R.T. -0.00 min
 Lab File: VU035140.D
 Acq: 14 Oct 2019 10:03

Tgt Ion: 62 Resp: 76427
 Ion Ratio Lower Upper
 62 100
 98 9.0 6.6 10.0

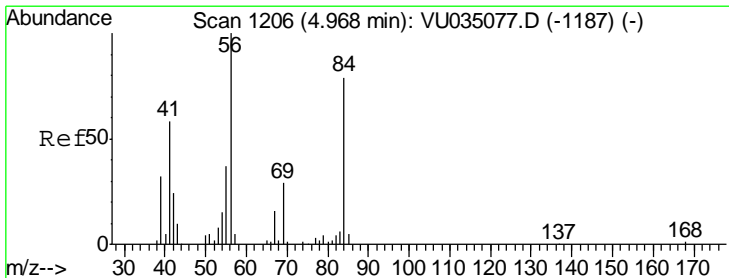
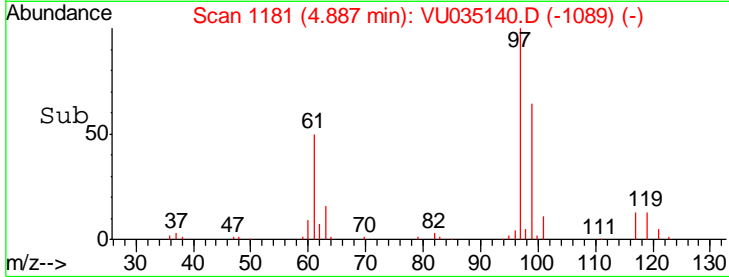
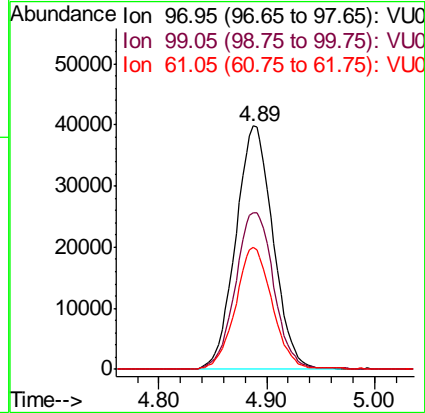
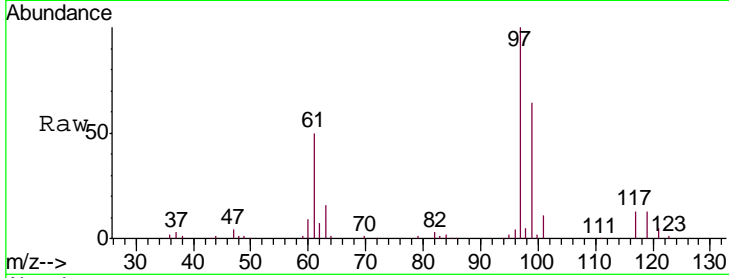




#29
 1,1,1-Trichloroethane
 Concen: 5.088 ug/L
 RT: 4.89 min Scan# 1181
 Delta R.T. -0.00 min
 Lab File: VU035140.D
 Acq: 14 Oct 2019 10:03

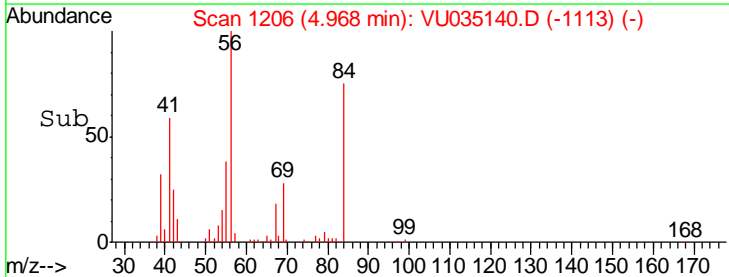
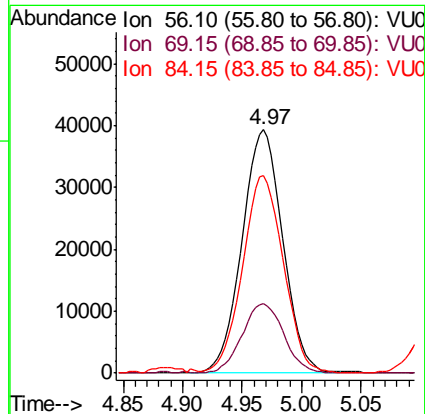
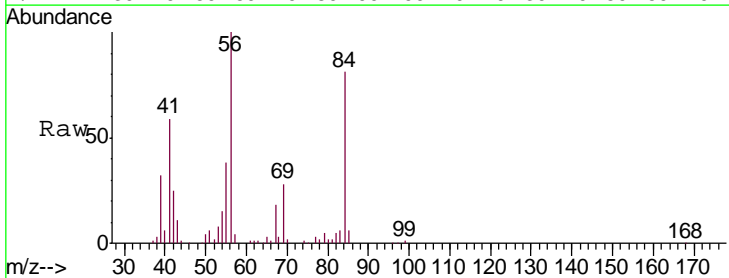
Instrument :
 MSVOA_U
 ClientSampled :
 VSTD00518

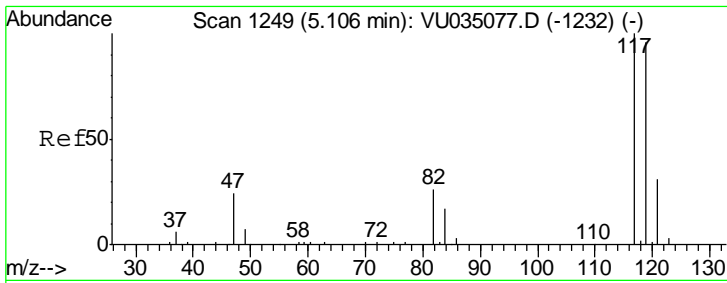
Tgt Ion	Resp	Lower	Upper
97	95886		
99	65.9	51.6	77.4
61	49.1	36.2	54.4



#30
 Cyclohexane
 Concen: 4.502 ug/L
 RT: 4.97 min Scan# 1206
 Delta R.T. 0.00 min
 Lab File: VU035140.D
 Acq: 14 Oct 2019 10:03

Tgt Ion	Resp	Lower	Upper
56	93288		
69	29.2	23.9	35.9
84	81.2	69.5	104.3

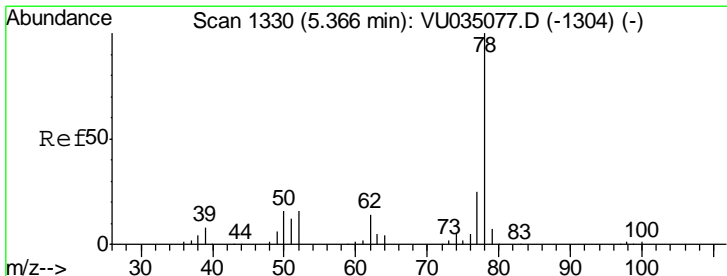
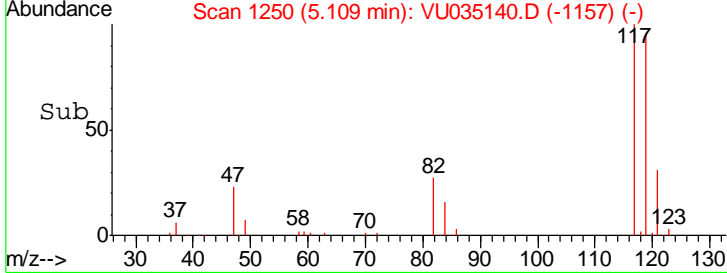
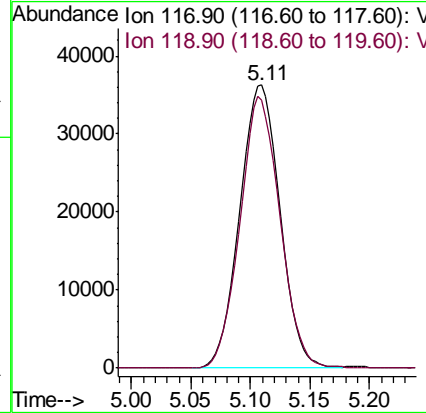
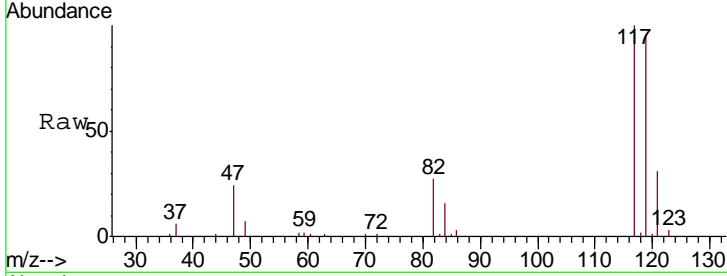




#31
 Carbon tetrachloride
 Concen: 5.219 ug/L
 RT: 5.11 min Scan# 1250
 Delta R.T. 0.00 min
 Lab File: VU035140.D
 Acq: 14 Oct 2019 10:03

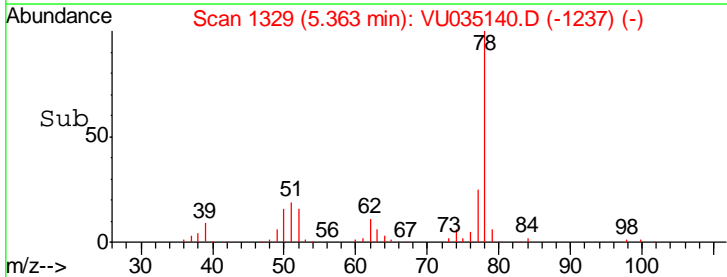
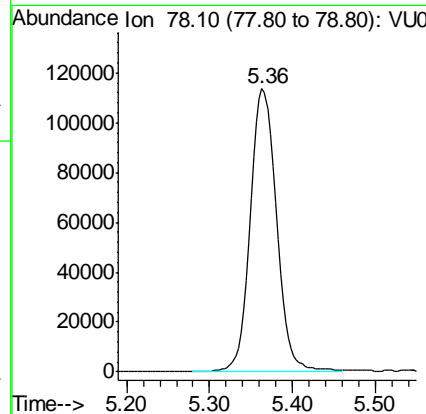
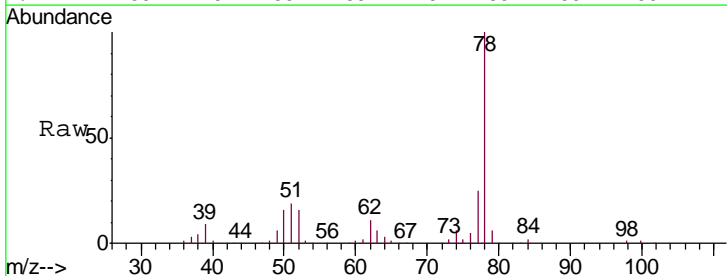
Instrument : MSVOA_U
 ClientSampled : VSTD00518

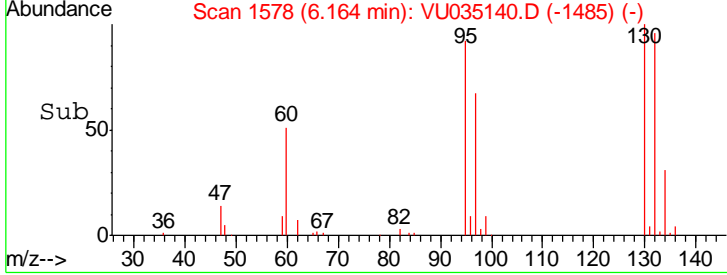
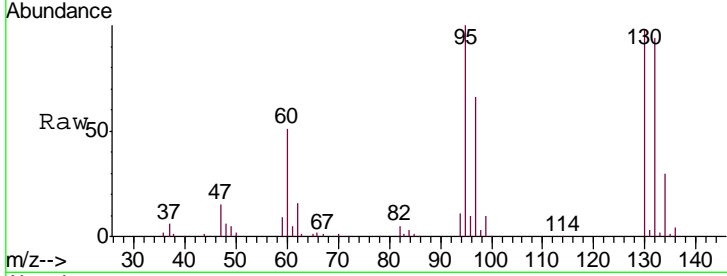
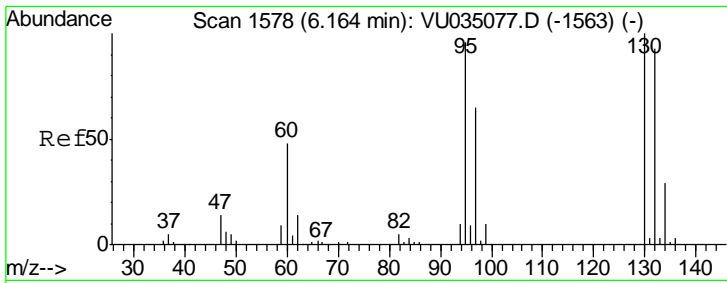
Tgt Ion: 117 Resp: 85282
 Ion Ratio Lower Upper
 117 100
 119 95.0 77.5 116.3



#33
 Benzene
 Concen: 4.973 ug/L
 RT: 5.36 min Scan# 1329
 Delta R.T. -0.00 min
 Lab File: VU035140.D
 Acq: 14 Oct 2019 10:03

Tgt Ion: 78 Resp: 251369



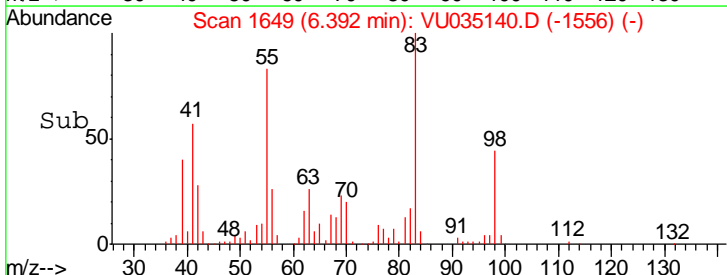
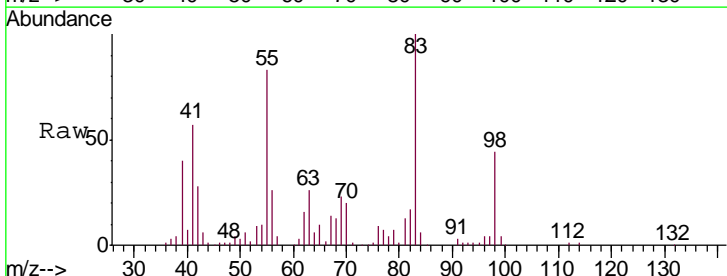
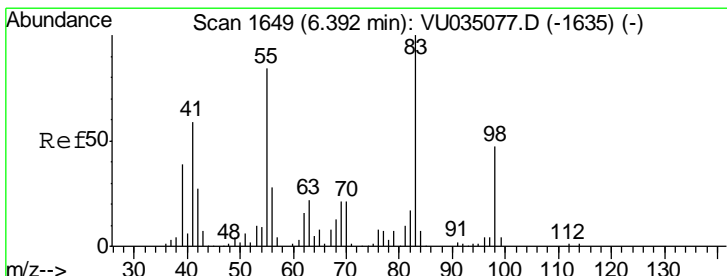
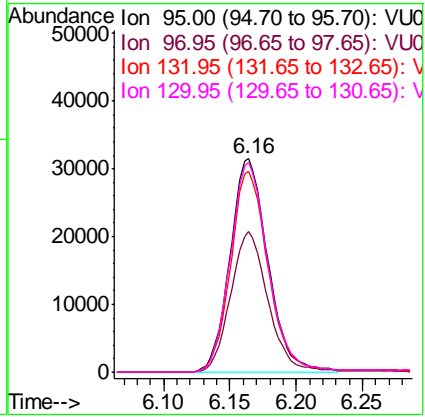


#34
 Trichloroethene
 Concen: 4.801 ug/L
 RT: 6.16 min Scan# 1578
 Delta R.T. 0.00 min
 Lab File: VU035140.D
 Acq: 14 Oct 2019 10:03

Instrument : MSVOA_U
 ClientSampleID : VSTD00518

Tgt Ion: 95 Resp: 62588

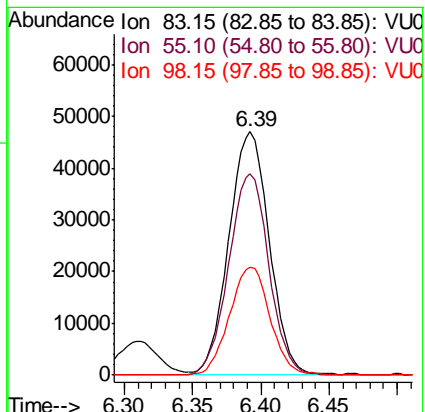
Ion	Ratio	Lower	Upper
95	100		
97	65.9	44.5	82.7
132	94.0	66.6	123.8
130	98.4	68.9	127.9

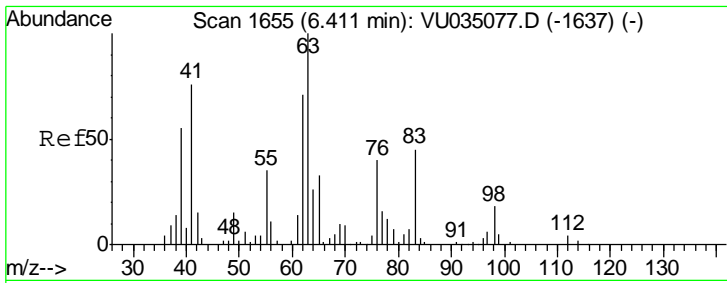


#35
 Methylcyclohexane
 Concen: 4.567 ug/L
 RT: 6.39 min Scan# 1649
 Delta R.T. 0.00 min
 Lab File: VU035140.D
 Acq: 14 Oct 2019 10:03

Tgt Ion: 83 Resp: 96428

Ion	Ratio	Lower	Upper
83	100		
55	82.8	62.6	94.0
98	44.8	36.2	54.2

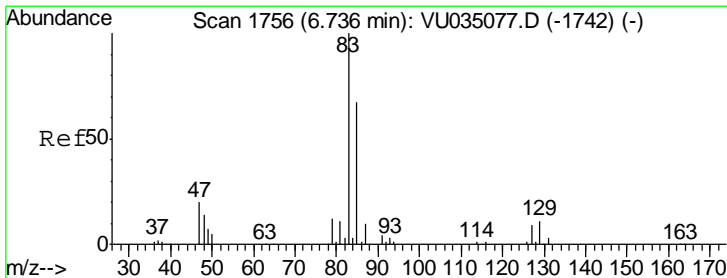
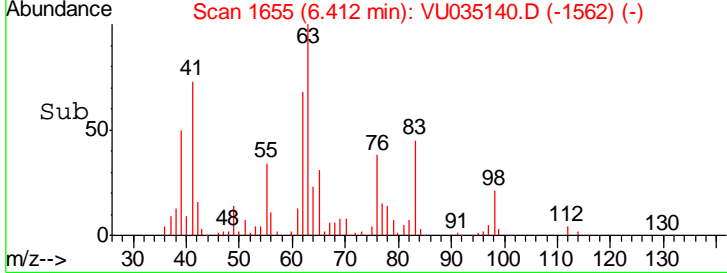
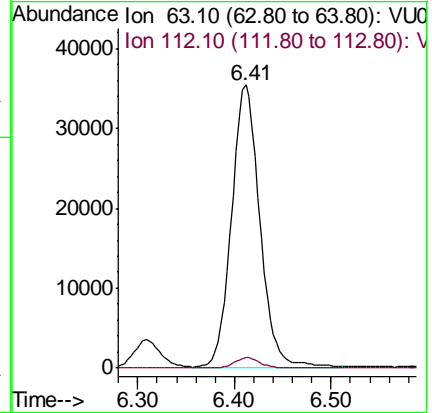
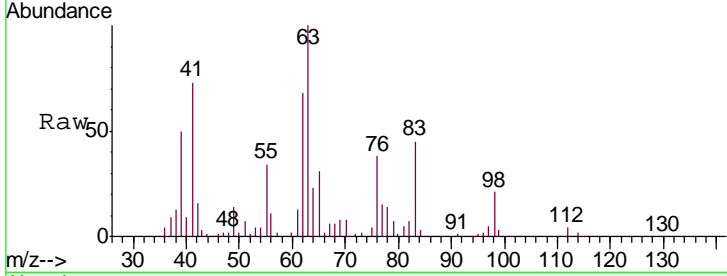




#37
 1,2-Dichloropropane
 Concen: 5.258 ug/L
 RT: 6.41 min Scan# 1655
 Delta R.T. 0.00 min
 Lab File: VU035140.D
 Acq: 14 Oct 2019 10:03

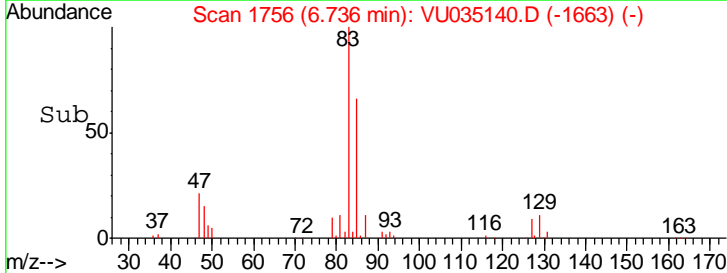
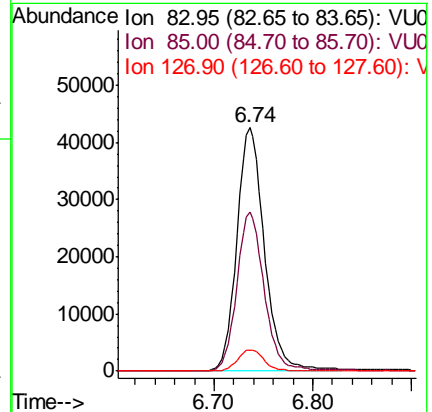
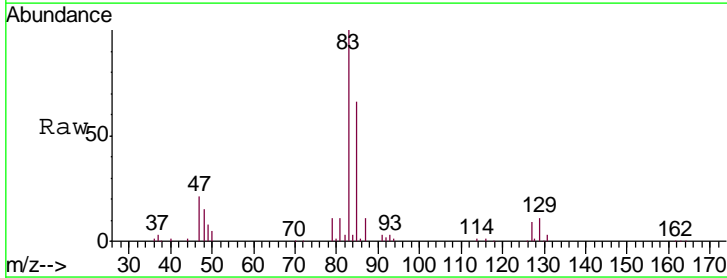
Instrument :
 MSVOA_U
 ClientSampled :
 VSTD00518

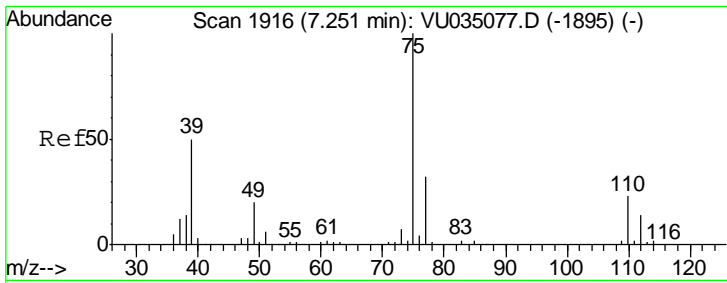
Tgt Ion: 63 Resp: 71693
 Ion Ratio Lower Upper
 63 100
 112 3.3 3.1 4.7



#38
 Bromodichloromethane
 Concen: 5.200 ug/L
 RT: 6.74 min Scan# 1756
 Delta R.T. 0.00 min
 Lab File: VU035140.D
 Acq: 14 Oct 2019 10:03

Tgt Ion: 83 Resp: 83112
 Ion Ratio Lower Upper
 83 100
 85 65.5 44.0 81.8
 127 8.7 7.0 10.4

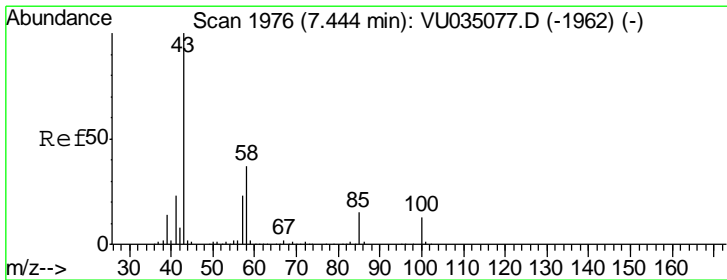
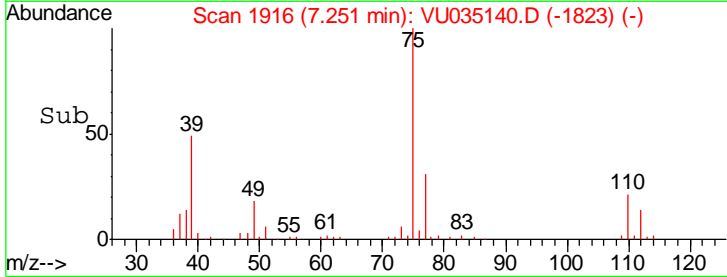
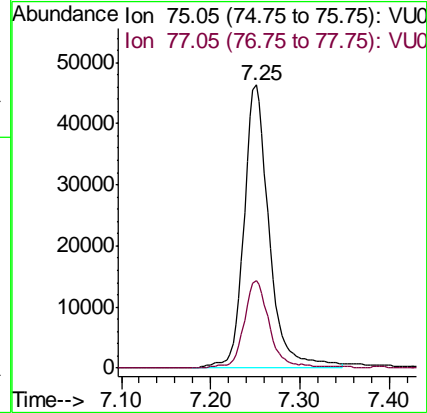
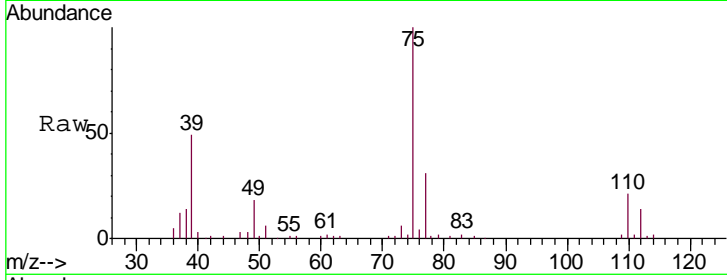




#39
 cis-1,3-Dichloropropene
 Concen: 4.933 ug/L
 RT: 7.25 min Scan# 1916
 Delta R.T. 0.00 min
 Lab File: VU035140.D
 Acq: 14 Oct 2019 10:03

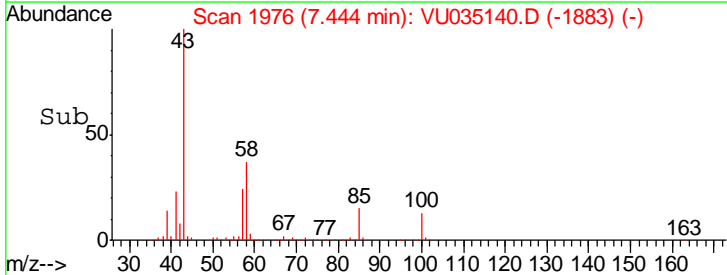
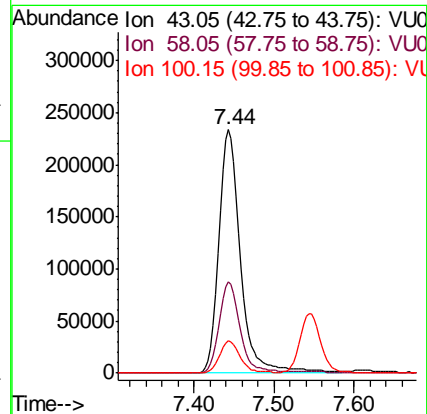
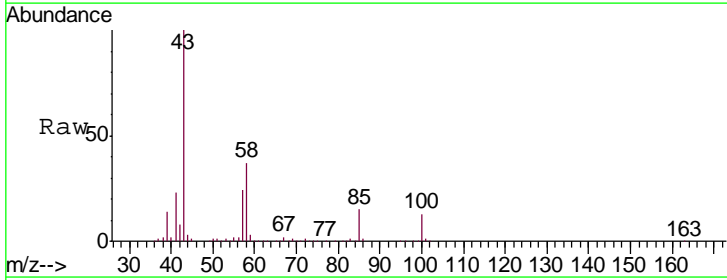
Instrument :
 MSVOA_U
 ClientSampled :
 VSTD00518

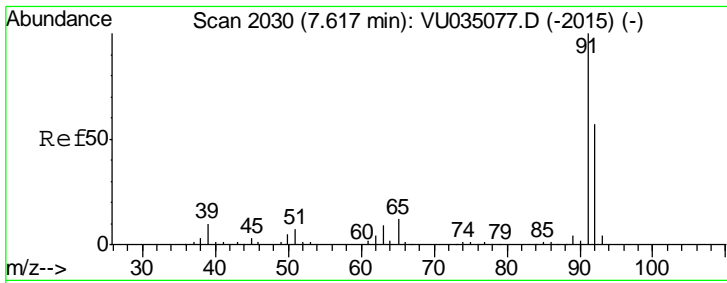
Tgt Ion: 75 Resp: 91119
 Ion Ratio Lower Upper
 75 100
 77 31.0 22.1 41.1



#40
 4-Methyl-2-pentanone
 Concen: 51.328 ug/L
 RT: 7.44 min Scan# 1976
 Delta R.T. 0.00 min
 Lab File: VU035140.D
 Acq: 14 Oct 2019 10:03

Tgt Ion: 43 Resp: 440477
 Ion Ratio Lower Upper
 43 100
 58 36.3 32.4 48.6
 100 12.8 11.9 17.9

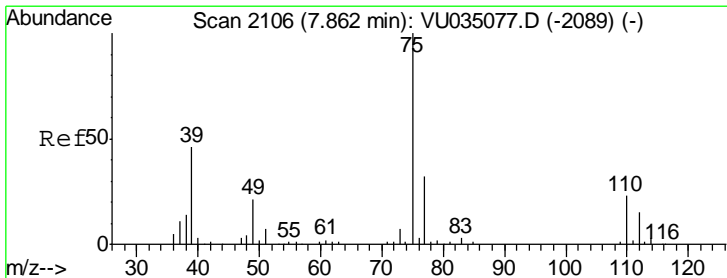
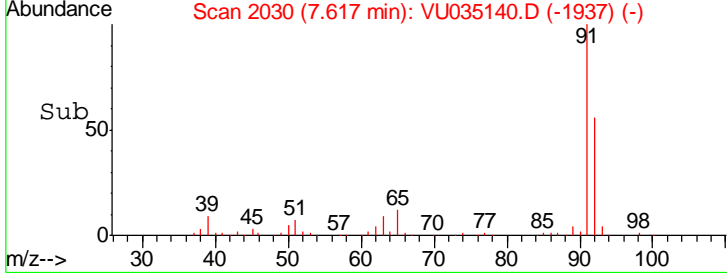
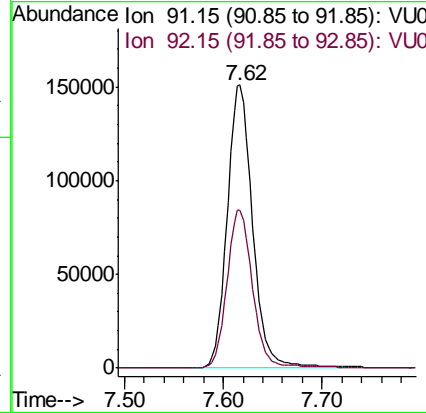
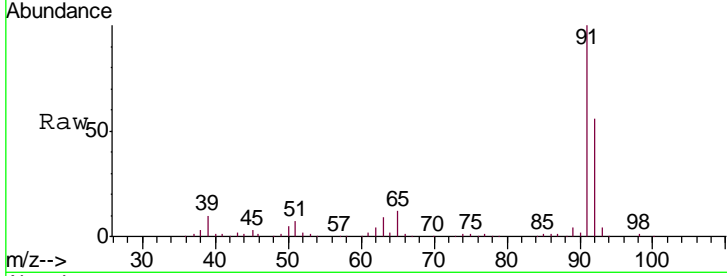




#42
 Toluene
 Concen: 5.190 ug/L
 RT: 7.62 min Scan# 2030
 Delta R.T. 0.00 min
 Lab File: VU035140.D
 Acq: 14 Oct 2019 10:03

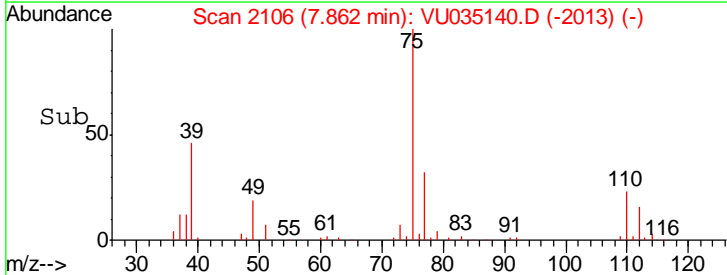
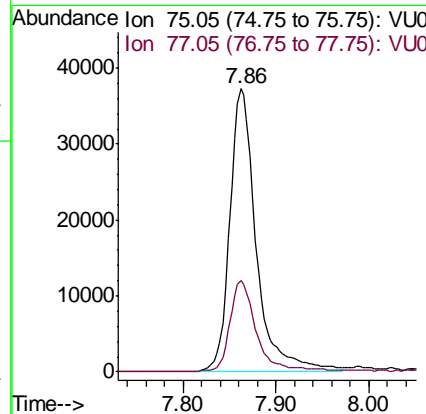
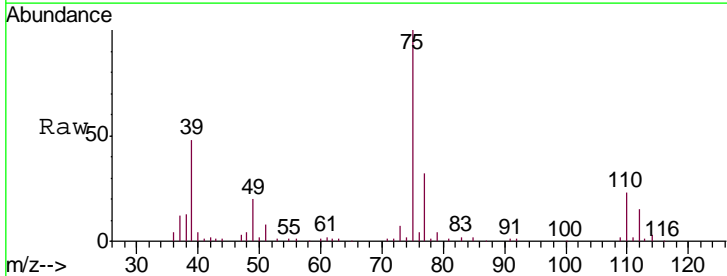
Instrument : MSVOA_U
 ClientSampled : VSTD00518

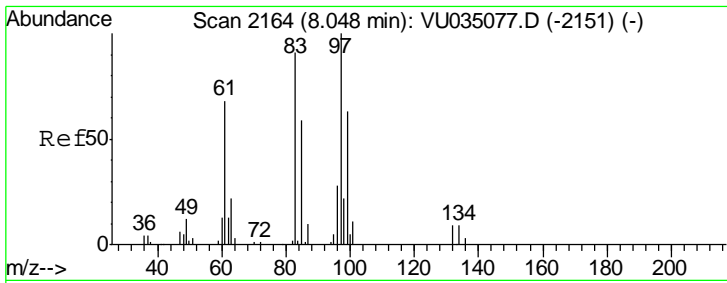
Tgt Ion: 91 Resp: 273845
 Ion Ratio Lower Upper
 91 100
 92 55.9 40.0 74.2



#44
 trans-1,3-Dichloropropene
 Concen: 5.176 ug/L
 RT: 7.86 min Scan# 2106
 Delta R.T. 0.00 min
 Lab File: VU035140.D
 Acq: 14 Oct 2019 10:03

Tgt Ion: 75 Resp: 74051
 Ion Ratio Lower Upper
 75 100
 77 32.1 21.6 40.0

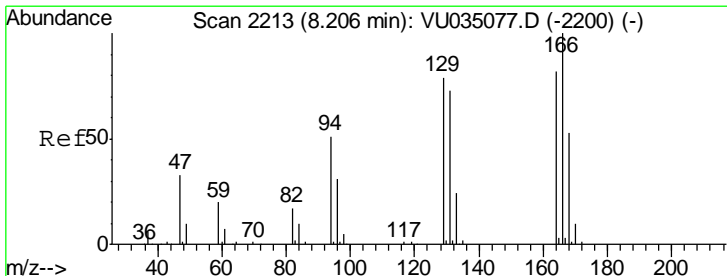
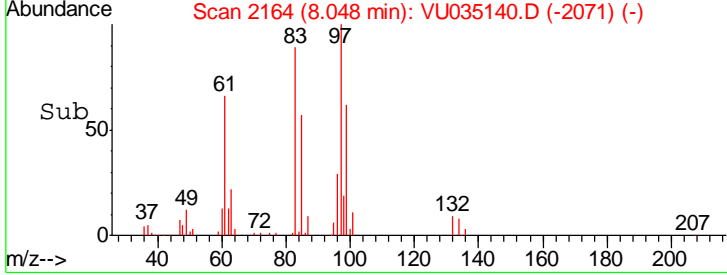
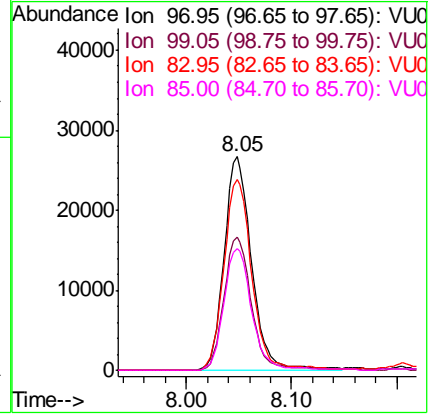
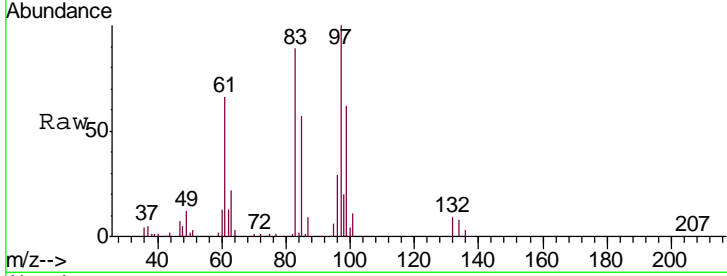




#45
 1,1,2-Trichloroethane
 Concen: 5.317 ug/L
 RT: 8.05 min Scan# 2164
 Delta R.T. 0.00 min
 Lab File: VU035140.D
 Acq: 14 Oct 2019 10:03

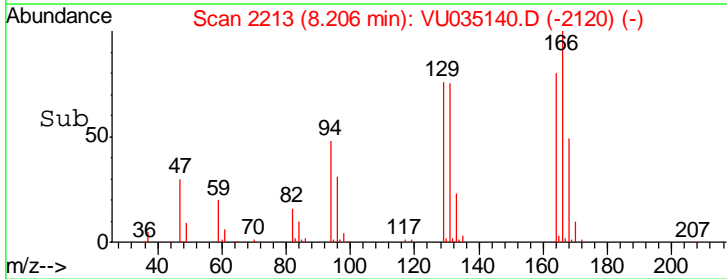
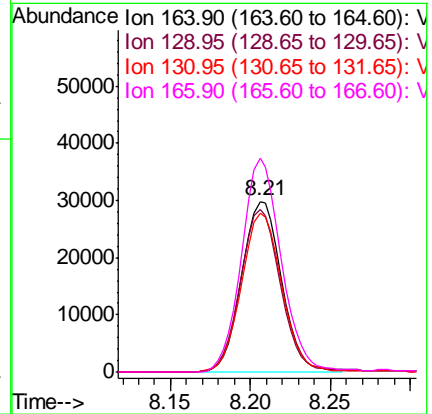
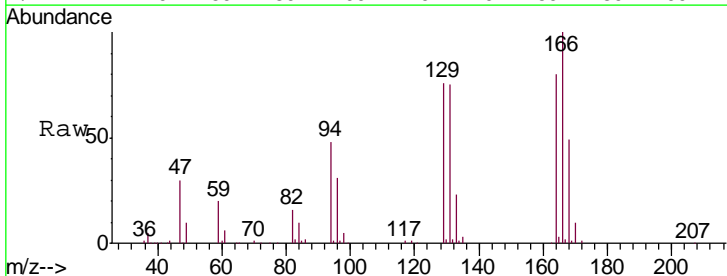
Instrument : MSVOA_U
 ClientSampled : VSTD00518

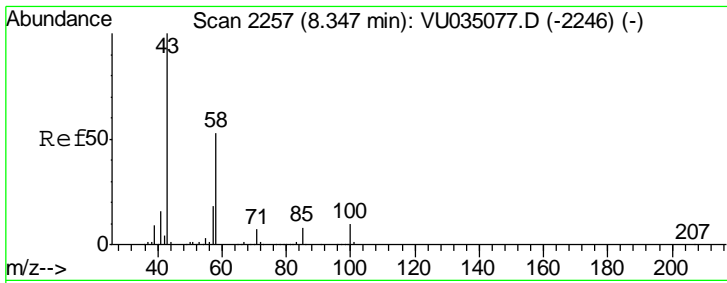
Tgt Ion	Resp	Lower	Upper
97	48131		
97	100		
99	62.3	42.3	78.5
83	89.5	58.0	107.6
85	57.1	37.8	70.2



#47
 Tetrachloroethene
 Concen: 4.806 ug/L
 RT: 8.21 min Scan# 2213
 Delta R.T. 0.00 min
 Lab File: VU035140.D
 Acq: 14 Oct 2019 10:03

Tgt Ion	Resp	Lower	Upper
164	50712		
164	100		
129	95.5	68.5	127.1
131	93.4	67.3	124.9
166	125.2	93.1	172.9

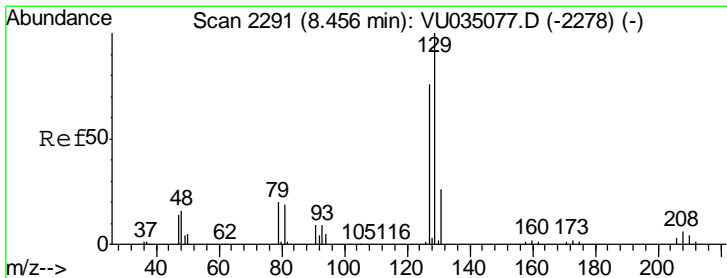
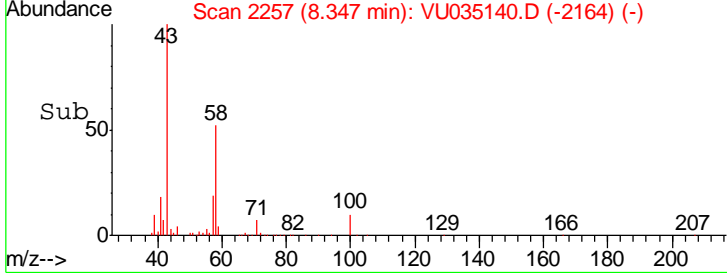
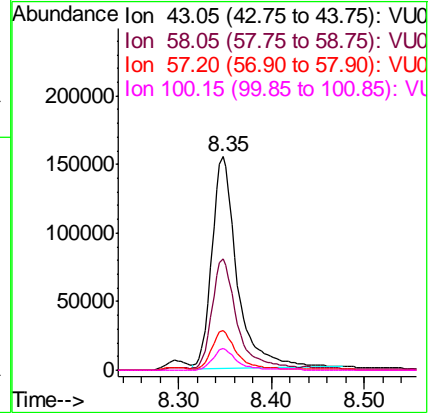
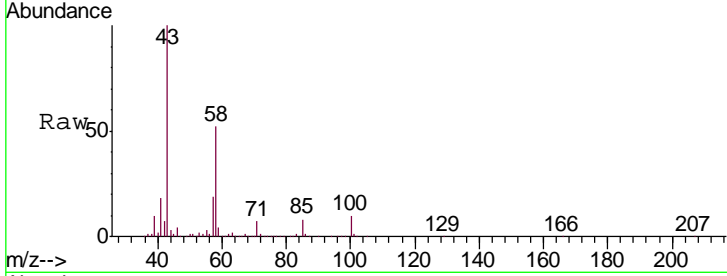




#48
 2-Hexanone
 Concen: 49.813 ug/L
 RT: 8.35 min Scan# 2257
 Delta R.T. 0.00 min
 Lab File: VU035140.D
 Acq: 14 Oct 2019 10:03

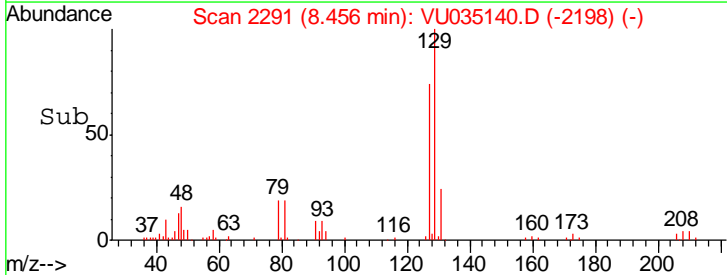
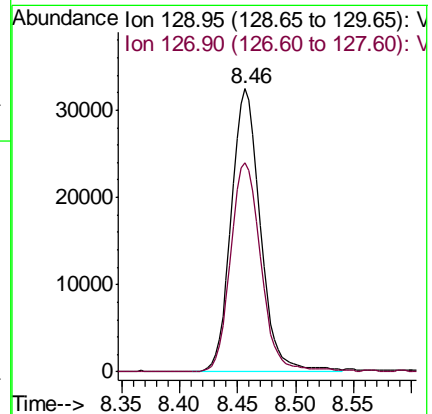
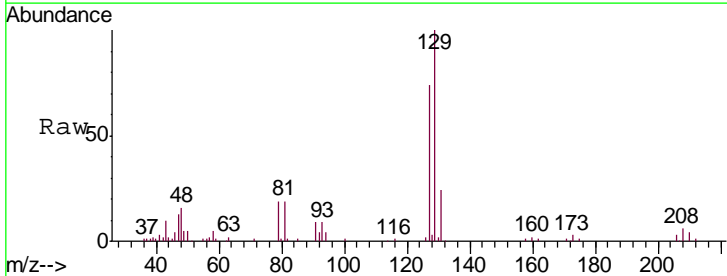
Instrument : MSVOA_U
 ClientSampled : VSTD00518

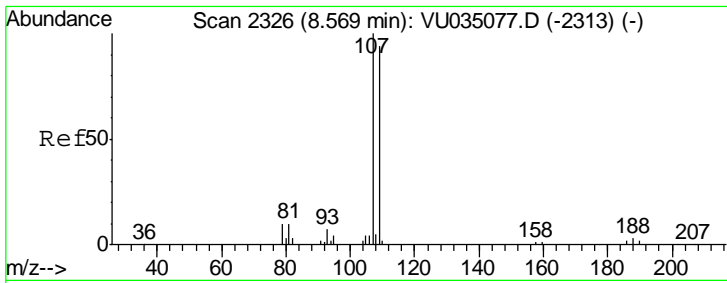
Tgt Ion	Resp	Lower	Upper
43	293091		
58	51.0	44.1	66.1
57	18.0	15.8	23.8
100	10.0	9.4	14.2



#49
 Dibromochloromethane
 Concen: 5.382 ug/L
 RT: 8.46 min Scan# 2291
 Delta R.T. 0.00 min
 Lab File: VU035140.D
 Acq: 14 Oct 2019 10:03

Tgt Ion	Resp	Lower	Upper
129	56320		
127	73.9	51.9	96.5

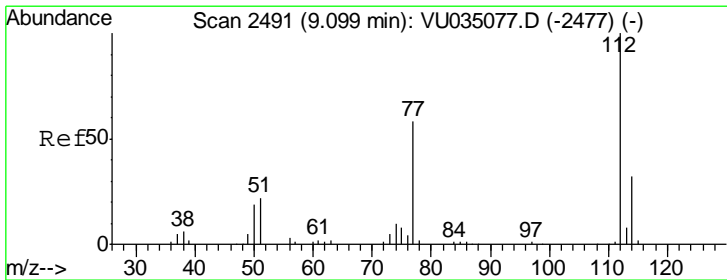
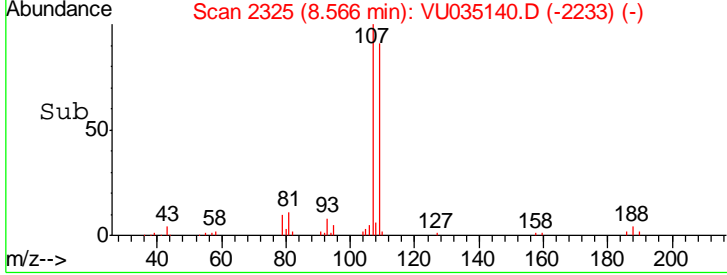
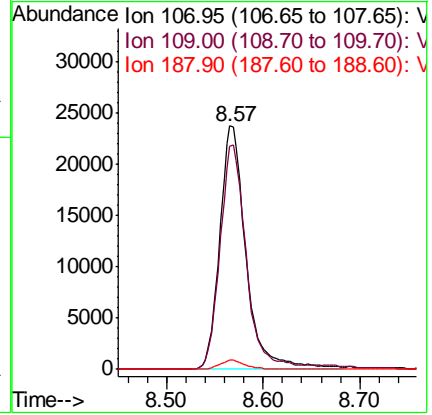
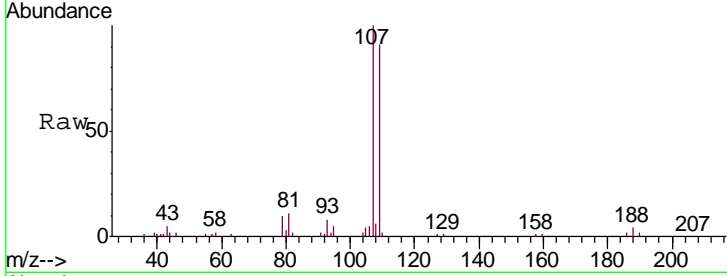




#50
 1,2-Dibromoethane
 Concen: 5.207 ug/L
 RT: 8.57 min Scan# 2325
 Delta R.T. -0.00 min
 Lab File: VU035140.D
 Acq: 14 Oct 2019 10:03

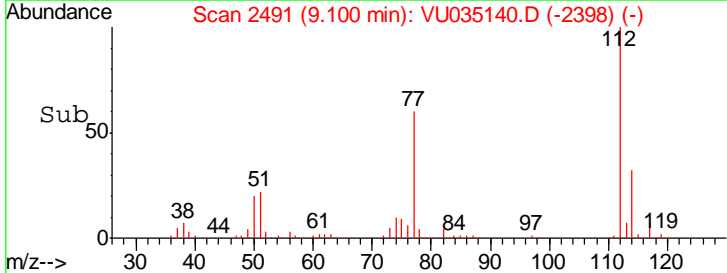
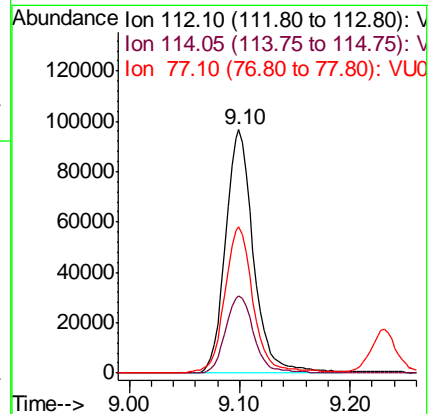
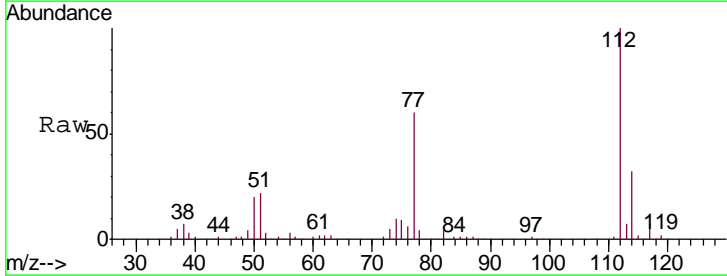
Instrument : MSVOA_U
 ClientSampled : VSTD00518

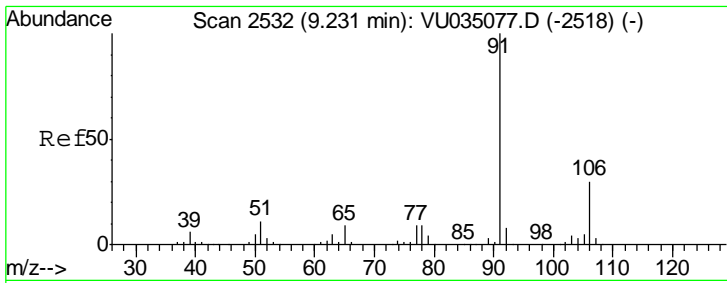
Tgt Ion	Resp	Lower	Upper
107	45054		
109	91.5	64.8	120.4
188	3.8	3.0	4.6



#51
 Chlorobenzene
 Concen: 4.972 ug/L
 RT: 9.10 min Scan# 2491
 Delta R.T. 0.00 min
 Lab File: VU035140.D
 Acq: 14 Oct 2019 10:03

Tgt Ion	Resp	Lower	Upper
112	170005		
114	31.6	22.1	41.1
77	60.0	46.9	70.3

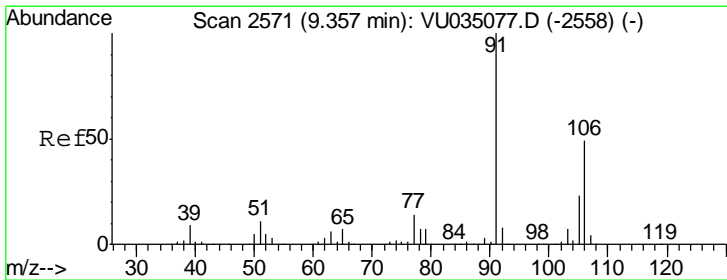
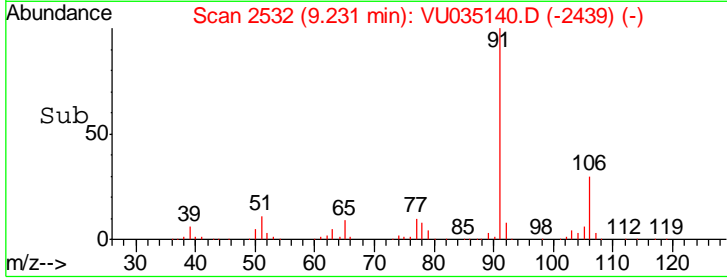
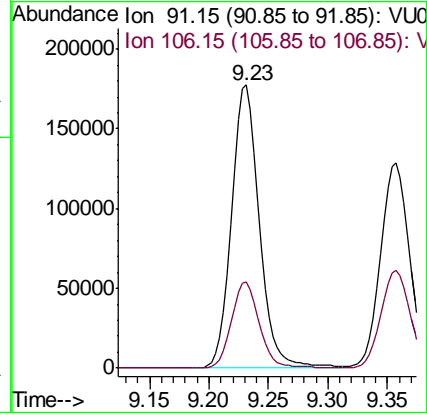
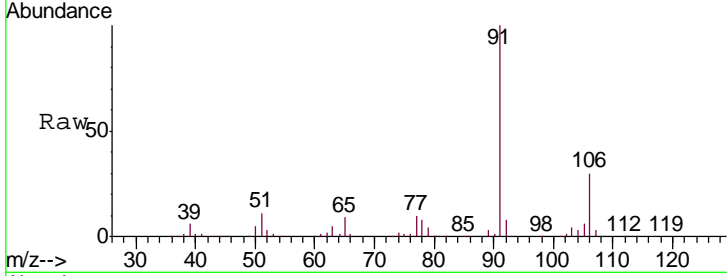




#52
Ethylbenzene
Concen: 4.940 ug/L
RT: 9.23 min Scan# 2532
Delta R.T. 0.00 min
Lab File: VU035140.D
Acq: 14 Oct 2019 10:03

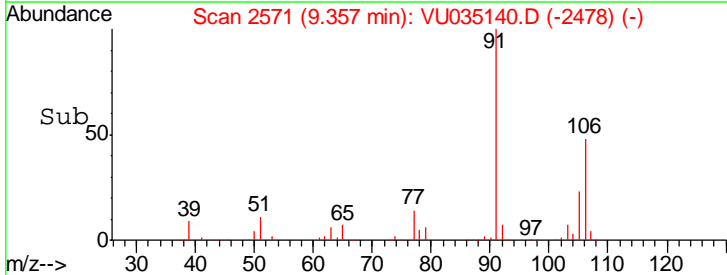
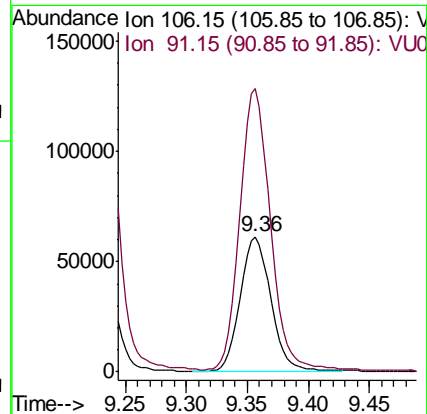
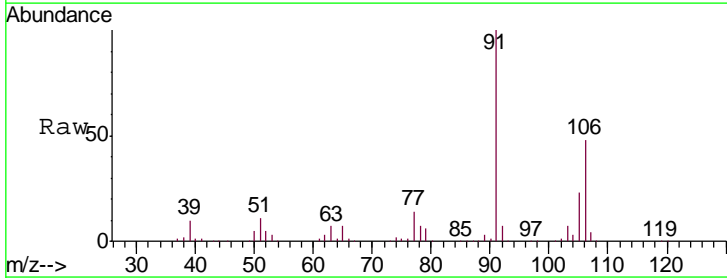
Instrument :
MSVOA_U
ClientSampled :
VSTD00518

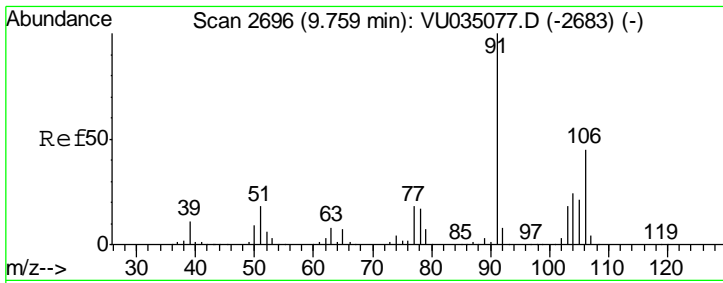
Tgt Ion: 91 Resp: 287859
Ion Ratio Lower Upper
91 100
106 30.5 21.6 40.2



#53
m,p-Xylene
Concen: 4.912 ug/L
RT: 9.36 min Scan# 2571
Delta R.T. 0.00 min
Lab File: VU035140.D
Acq: 14 Oct 2019 10:03

Tgt Ion: 106 Resp: 105727
Ion Ratio Lower Upper
106 100
91 209.8 147.6 274.0

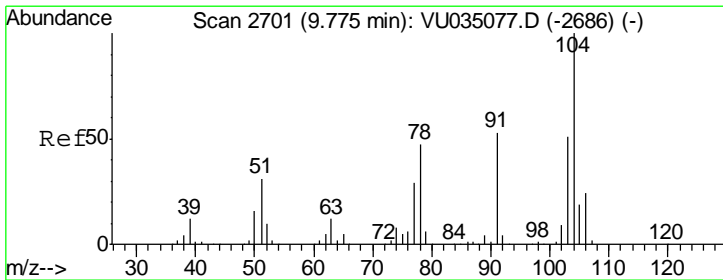
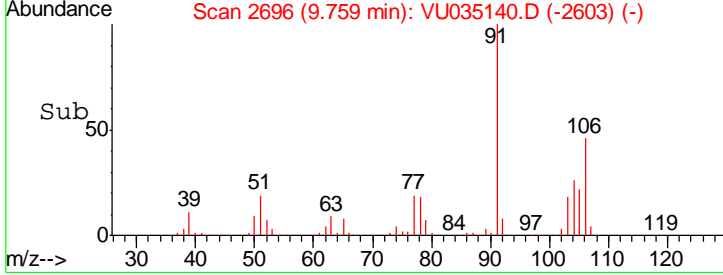
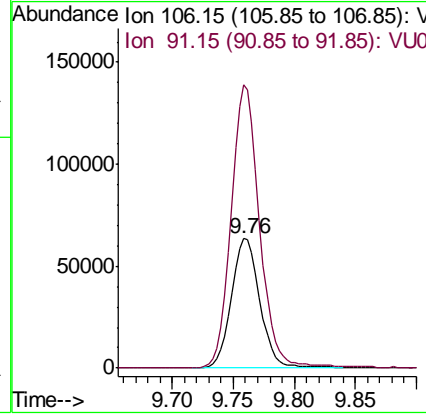
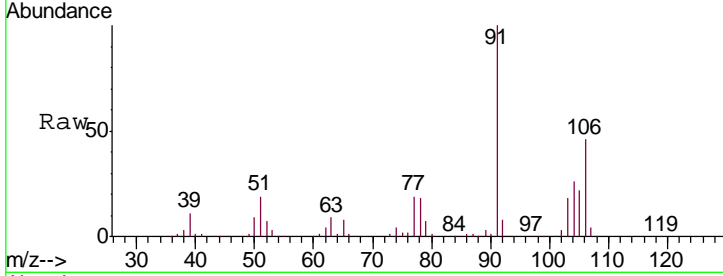




#54
 o-Xylene
 Concen: 4.949 ug/L
 RT: 9.76 min Scan# 2696
 Delta R.T. 0.00 min
 Lab File: VU035140.D
 Acq: 14 Oct 2019 10:03

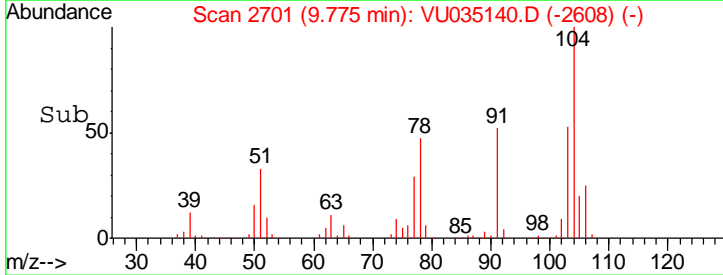
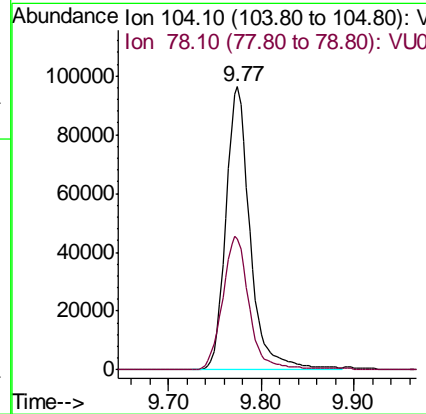
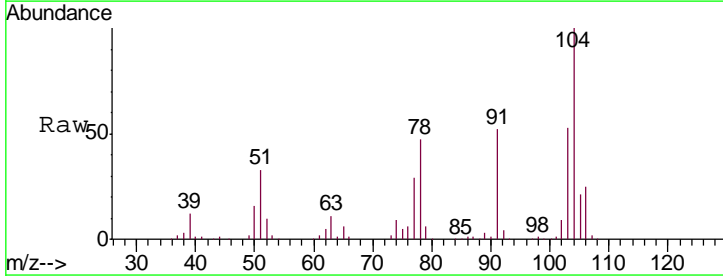
Instrument :
 MSVOA_U
ClientSampled :
 VSTD00518

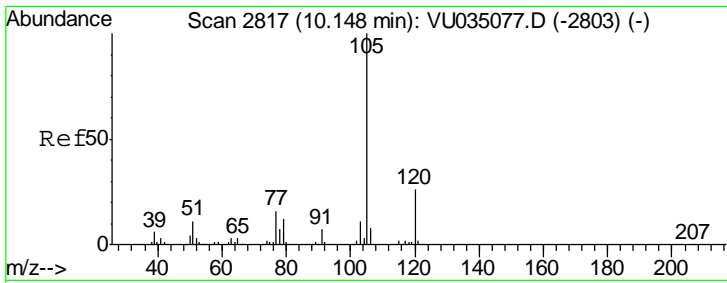
Tgt Ion:106 Resp: 104182
 Ion Ratio Lower Upper
 106 100
 91 218.2 148.5 275.7



#55
 Styrene
 Concen: 5.148 ug/L
 RT: 9.77 min Scan# 2701
 Delta R.T. 0.00 min
 Lab File: VU035140.D
 Acq: 14 Oct 2019 10:03

Tgt Ion:104 Resp: 175511
 Ion Ratio Lower Upper
 104 100
 78 46.5 32.8 60.8

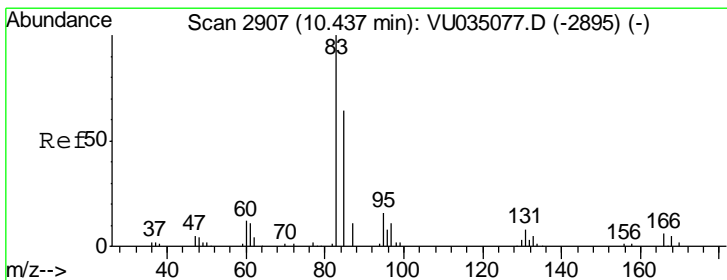
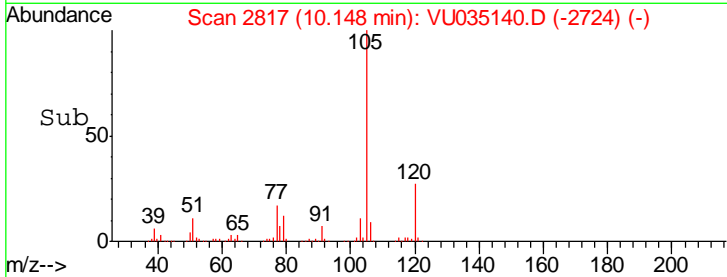
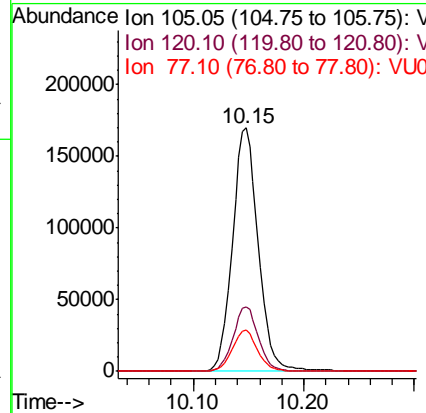
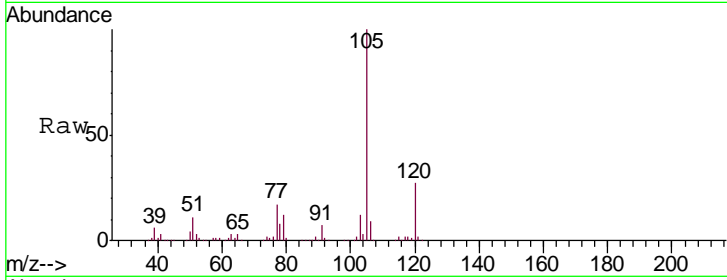




#56
 Isopropylbenzene
 Concen: 4.898 ug/L
 RT: 10.15 min Scan# 2817
 Delta R.T. 0.00 min
 Lab File: VU035140.D
 Acq: 14 Oct 2019 10:03

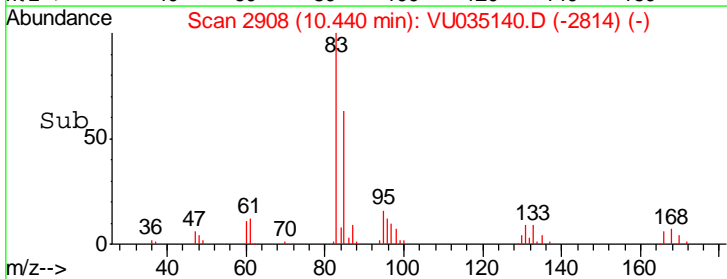
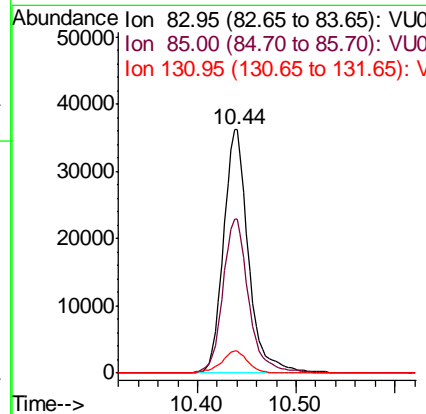
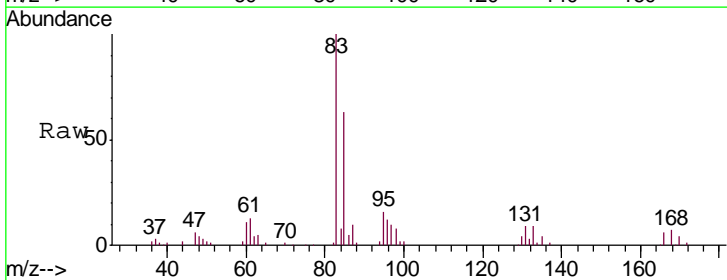
Instrument :
 MSVOA_U
 ClientSampled :
 VSTD00518

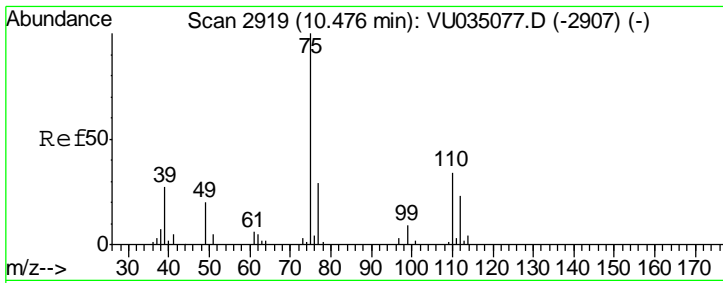
Tgt Ion	Resp	Lower	Upper
105	274680		
120	26.2	21.3	31.9
77	16.7	13.0	19.4



#58
 1,1,2,2-Tetrachloroethane
 Concen: 5.226 ug/L
 RT: 10.44 min Scan# 2908
 Delta R.T. 0.00 min
 Lab File: VU035140.D
 Acq: 14 Oct 2019 10:03

Tgt Ion	Resp	Lower	Upper
83	64337		
85	63.2	44.6	82.8
131	9.0	7.4	11.2

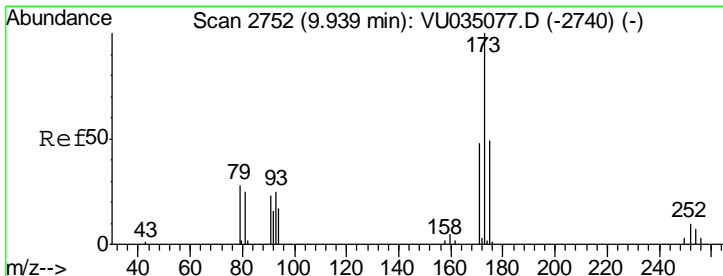
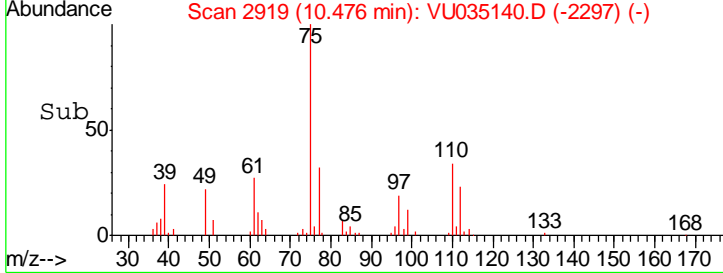
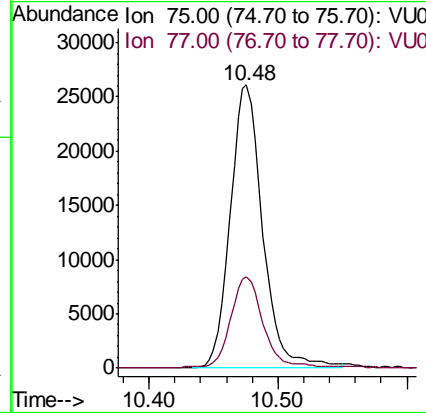
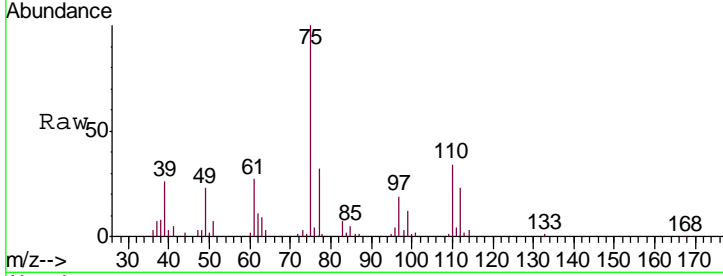




#59
 1,2,3-Trichloropropane
 Concen: 5.161 ug/L
 RT: 10.48 min Scan# 2919
 Delta R.T. 0.00 min
 Lab File: VU035140.D
 Acq: 14 Oct 2019 10:03

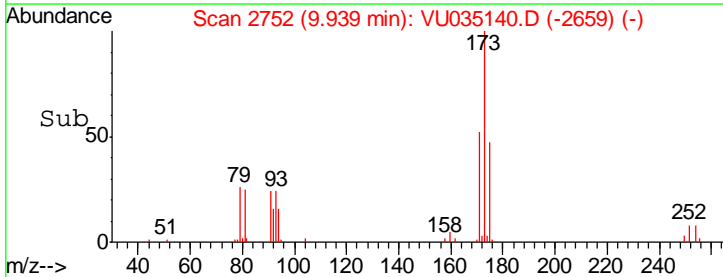
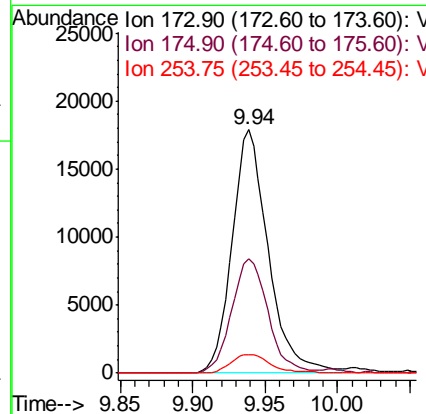
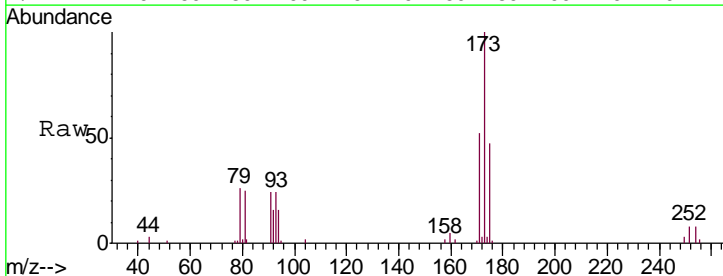
Instrument : MSVOA_U
 ClientSampled : VSTD00518

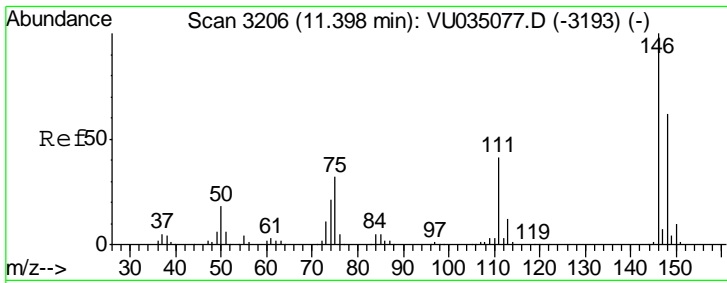
Tgt Ion	Resp	Lower	Upper
75	4546		
77	30.9	26.5	39.7



#61
 Bromoform
 Concen: 5.523 ug/L
 RT: 9.94 min Scan# 2752
 Delta R.T. 0.00 min
 Lab File: VU035140.D
 Acq: 14 Oct 2019 10:03

Tgt Ion	Resp	Lower	Upper
173	31010		
175	47.2	37.2	55.8
254	8.5	6.6	9.8

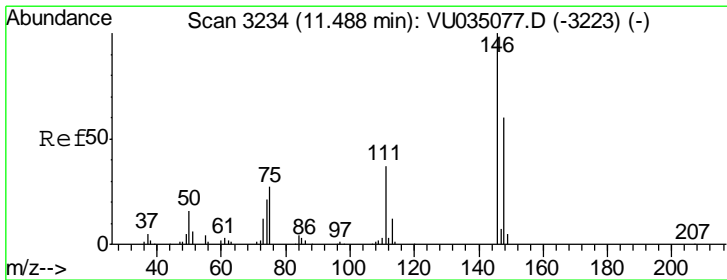
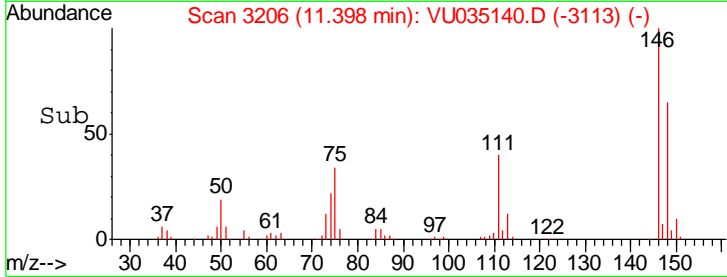
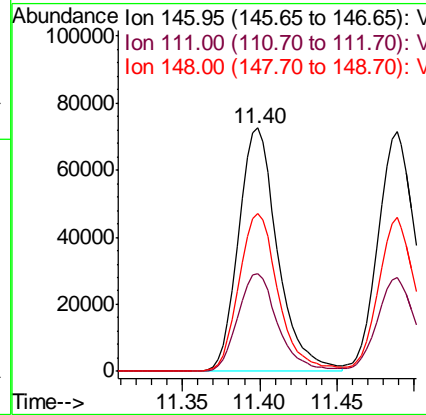
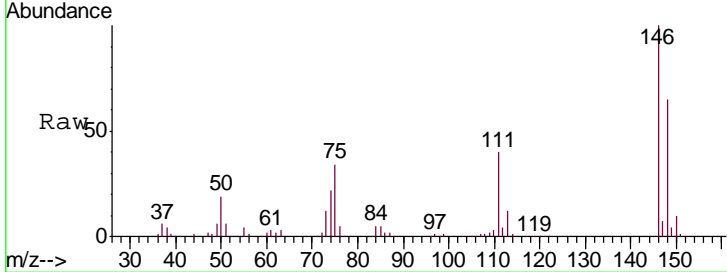




#62
 1,3-Dichlorobenzene
 Concen: 5.058 ug/L
 RT: 11.40 min Scan# 3206
 Delta R.T. 0.00 min
 Lab File: VU035140.D
 Acq: 14 Oct 2019 10:03

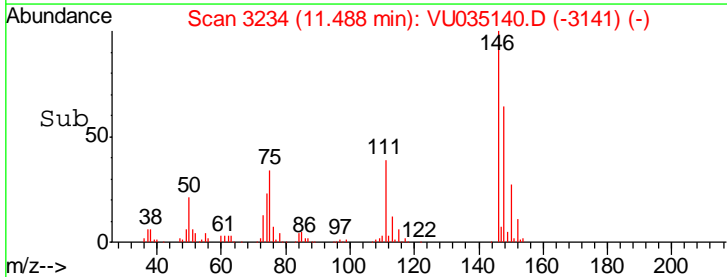
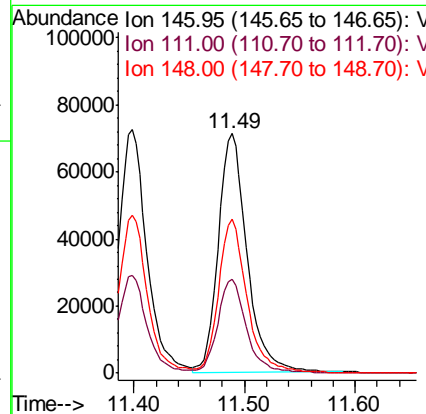
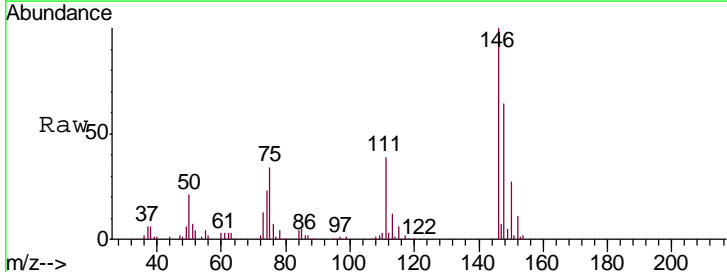
Instrument :
 MSVOA_U
 ClientSampled :
 VSTD00518

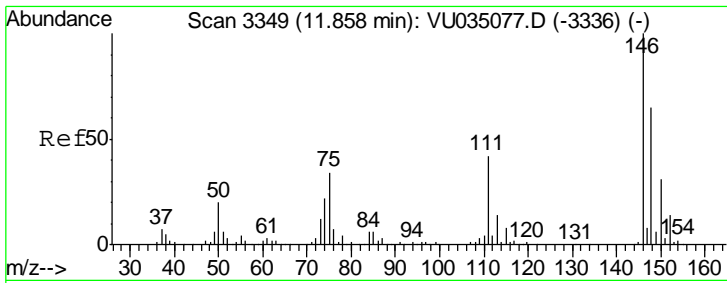
Tgt Ion	Resp	Lower	Upper
146	127538		
111	40.3	28.6	53.2
148	64.9	45.0	83.6



#63
 1,4-Dichlorobenzene
 Concen: 5.030 ug/L
 RT: 11.49 min Scan# 3234
 Delta R.T. 0.00 min
 Lab File: VU035140.D
 Acq: 14 Oct 2019 10:03

Tgt Ion	Resp	Lower	Upper
146	128024		
111	39.0	27.9	51.7
148	64.1	44.1	81.9

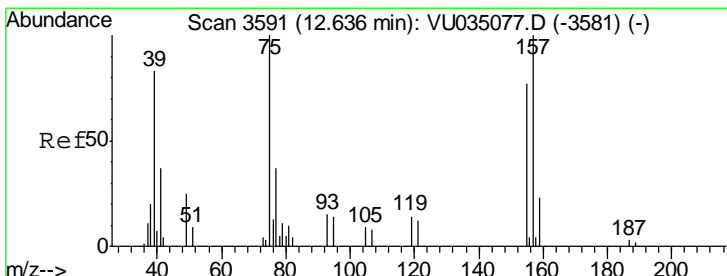
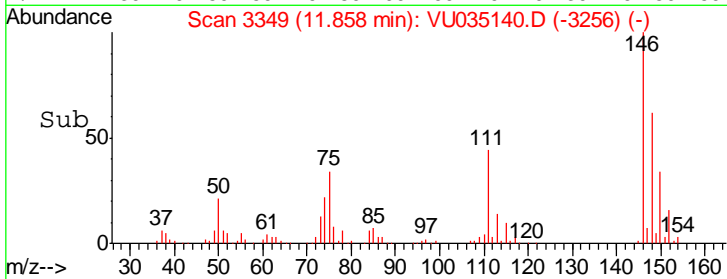
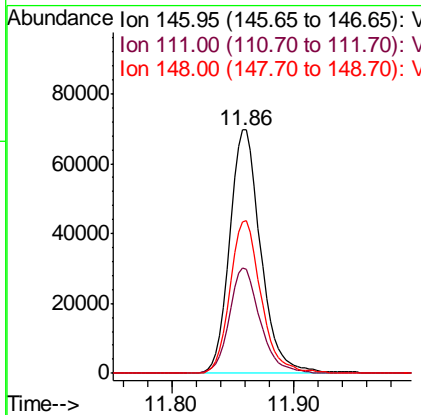
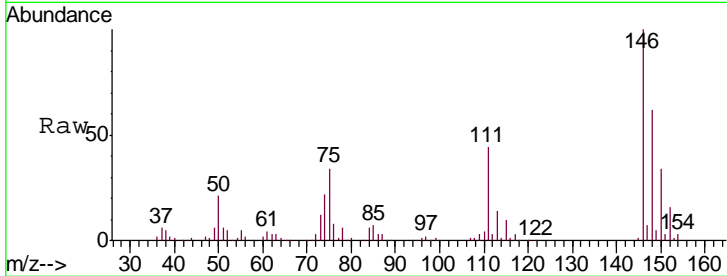




#65
 1,2-Dichlorobenzene
 Concen: 5.078 ug/L
 RT: 11.86 min Scan# 3349
 Delta R.T. 0.00 min
 Lab File: VU035140.D
 Acq: 14 Oct 2019 10:03

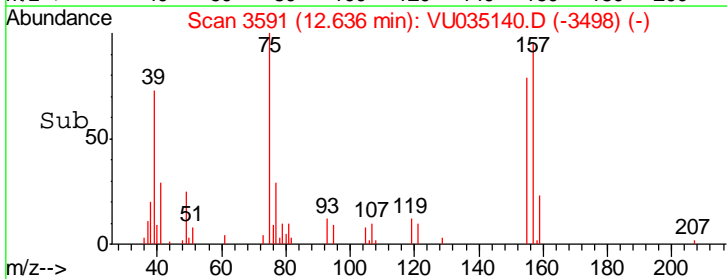
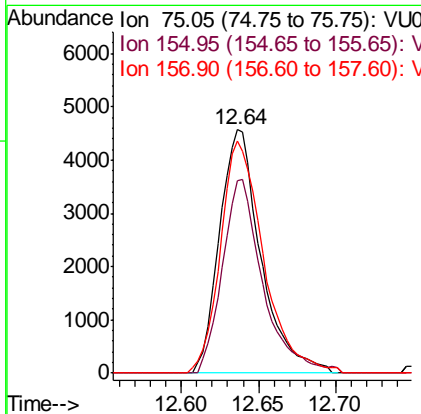
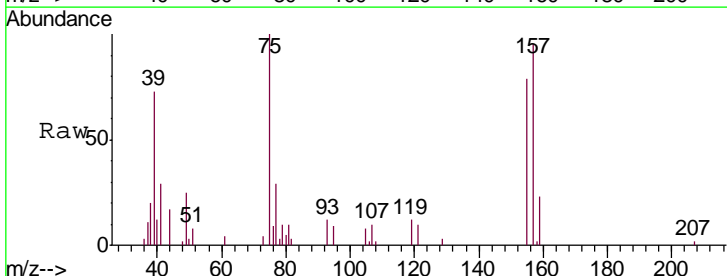
Instrument :
 MSVOA_U
 ClientSampled :
 VSTD00518

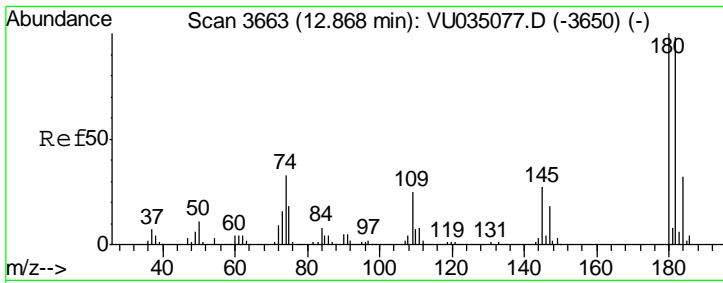
Tgt Ion	Resp	Lower	Upper
146	123555		
111	43.5	34.2	51.4
148	62.4	52.0	78.0



#66
 1,2-Dibromo-3-chloropropane
 Concen: 5.490 ug/L
 RT: 12.64 min Scan# 3591
 Delta R.T. 0.00 min
 Lab File: VU035140.D
 Acq: 14 Oct 2019 10:03

Tgt Ion	Resp	Lower	Upper
75	8490		
155	79.2	67.1	100.7
157	95.3	83.7	125.5

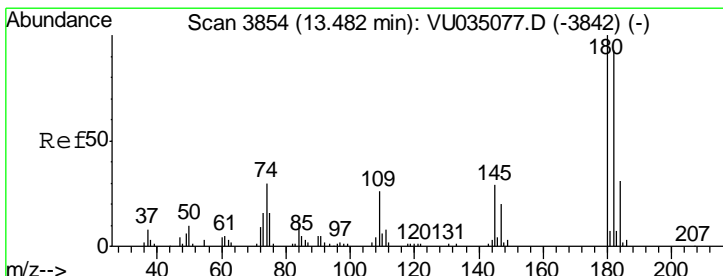
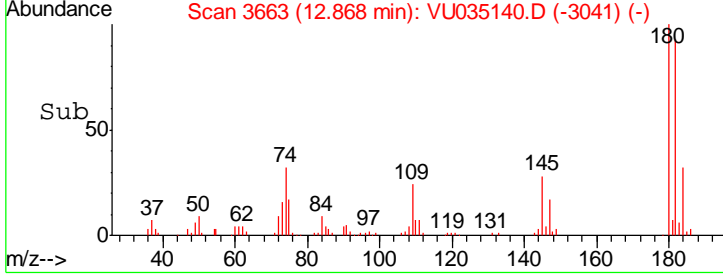
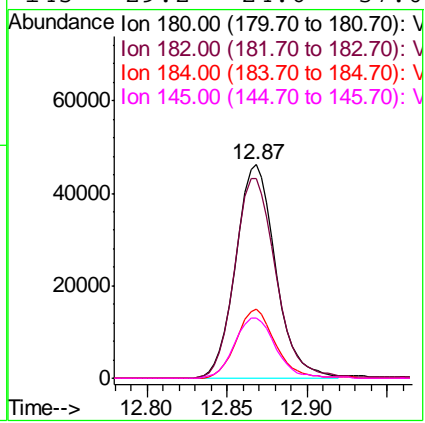
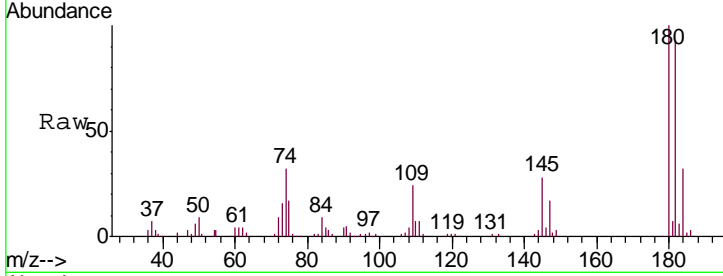




#67
 1,3,5-Trichlorobenzene
 Concen: 4.601 ug/L
 RT: 12.87 min Scan# 3663
 Delta R.T. 0.00 min
 Lab File: VU035140.D
 Acq: 14 Oct 2019 10:03

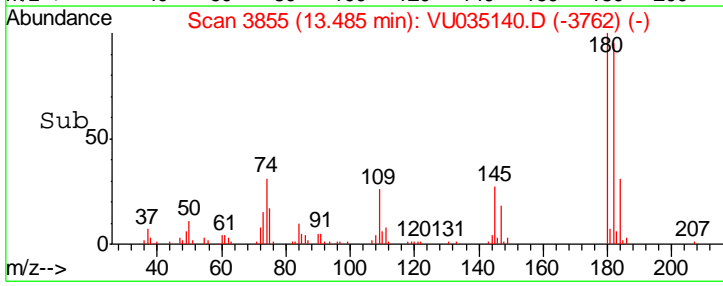
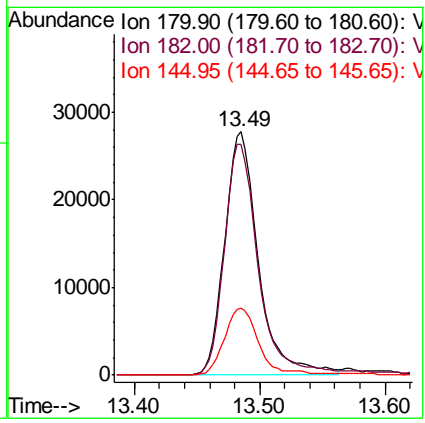
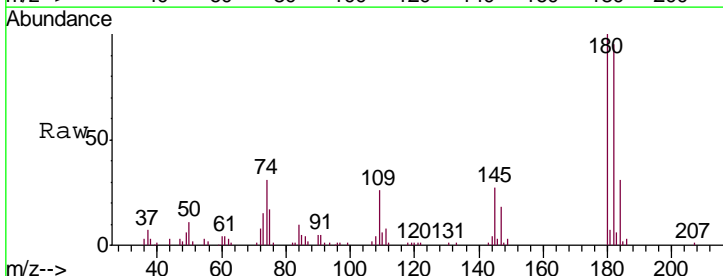
Instrument : MSVOA_U
 ClientSampled : VSTD00518

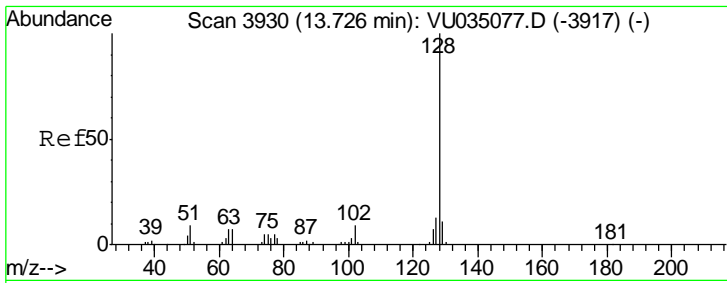
Tgt Ion	Resp	Lower	Upper
180	100		
182	96.8	76.0	114.0
184	31.7	24.2	36.2
145	29.2	24.6	37.0



#68
 1,2,4-trichlorobenzene
 Concen: 4.065 ug/L
 RT: 13.49 min Scan# 3855
 Delta R.T. 0.00 min
 Lab File: VU035140.D
 Acq: 14 Oct 2019 10:03

Tgt Ion	Resp	Lower	Upper
180	100		
182	95.3	77.3	115.9
145	27.7	24.5	36.7

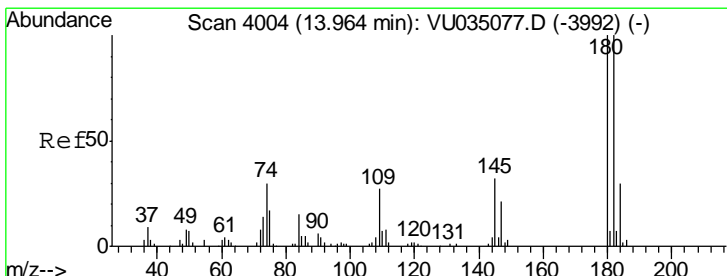
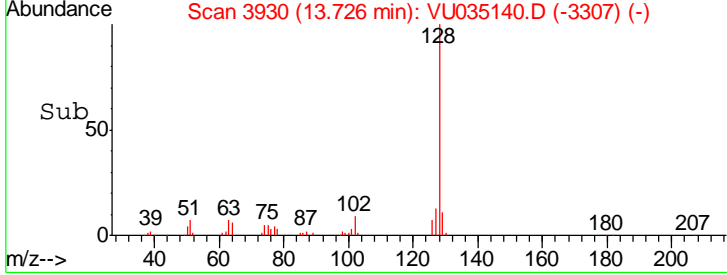
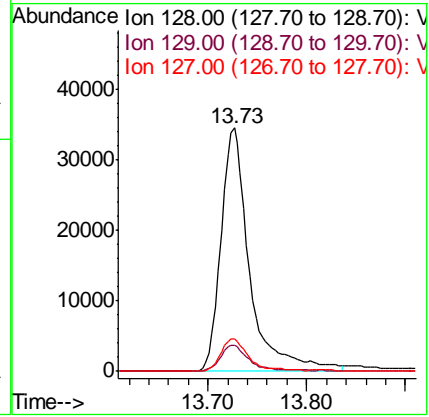
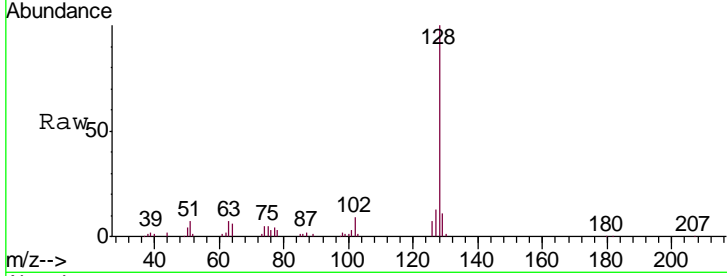




#69
 Naphthalene
 Concen: 3.564 ug/L
 RT: 13.73 min Scan# 3930
 Delta R.T. 0.00 min
 Lab File: VU035140.D
 Acq: 14 Oct 2019 10:03

Instrument : MSVOA_U
 ClientSampled : VSTD00518

Tgt Ion	Resp	Lower	Upper
128	70665		
129	10.8	8.7	13.1
127	13.0	10.6	15.8



#70
 1,2,3-Trichlorobenzene
 Concen: 4.403 ug/L
 RT: 13.97 min Scan# 4005
 Delta R.T. 0.00 min
 Lab File: VU035140.D
 Acq: 14 Oct 2019 10:03

Tgt Ion	Resp	Lower	Upper
180	54599		
182	93.1	77.0	115.4
145	28.5	25.9	38.9

