

Data Path : Z:\voasrv\HPCHEM1\MSVOA_U\Data\VU101422\
 Data File : VU051426.D
 Acq On : 14 Oct 2022 17:38
 Operator : JC/MD
 Sample : VSTDCCC010
 Misc : 25.0mL/MSVOA_U/WATER
 ALS Vial : 10 Sample Multiplier: 1

Instrument :
 MSVOA_U
 ClientSampleId :
 VSTDCCC010EC

Quant Time: Oct 15 06:10:39 2022
 Quant Method : Z:\voasrv\HPCHEM1\MSVOA_U\Method\524U100422DW.M
 Quant Title : METHOD 524.2 VOLATILES DRINKING WATER
 QLast Update : Wed Oct 05 02:45:21 2022
 Response via : Initial Calibration

Compound	R.T.	QIon	Response	Conc	Units	Dev(Min)
Internal Standards						
1) Fluorobenzene	6.112	96	62844	1.000	ug/l	# 0.00
System Monitoring Compounds						
57) 4-Bromofluorobenzene	10.632	95	22279	1.079	ug/l	0.00
Spiked Amount	1.000		Recovery	=	108.000%	
68) 1,2-Dichlorobenzene-d4	12.192	152	23805	1.037	ug/l	0.00
Spiked Amount	1.000		Recovery	=	104.000%	
Target Compounds						
						Qvalue
2) Dichlorodifluoromethane	1.382	85	212355	10.281	ug/l	100
3) Chloromethane	1.527	50	274985	9.925	ug/l	100
4) Vinyl Chloride	1.601	62	270236	10.273	ug/l	100
5) Bromomethane	1.845	94	150410	8.981	ug/l	100
6) Chloroethane	1.928	64	162301	9.833	ug/l	99
7) Trichlorofluoromethane	2.134	101	305996	10.263	ug/l	100
8) 1,1,2-Trichloro-1,2,2-...	2.578	101	174120	10.147	ug/l	95
9) 1,1-Dichloroethene	2.578	96	172778	9.557	ug/l	98
10) Iodomethane	2.716	142	247964	9.408	ug/l	98
11) Allyl Chloride	2.919	41	267553	9.459	ug/l	93
12) Acrylonitrile	3.311	53	105540	18.672	ug/l	97
13) Acetone	2.623	43	169313	55.992	ug/l	93
14) Carbon Disulfide	2.787	76	606885	8.864	ug/l	100
15) Methylene Chloride	3.038	84	221596	10.269	ug/l	98
16) trans-1,2-Dichloroethene	3.343	96	189531	9.283	ug/l	99
17) 1,1-Dichloroethane	3.864	63	359759	10.106	ug/l	99
18) 2-Butanone	4.710	43	265699	57.647	ug/l	99
19) Cyclohexane	5.382	56	224408	9.398	ug/l	85
20) Methylcyclohexane	6.761	83	252895	10.581	ug/l	97
21) 2,2-Dichloropropane	4.658	77	253244	10.434	ug/l	100
22) cis-1,2-Dichloroethene	4.661	96	196737	10.036	ug/l	97
23) Diethyl Ether	2.375	59	155082	9.624	ug/l	98
24) tert-Butyl Alcohol	3.192	59	165289	217.357	ug/l	97
25) Methyl tert-Butyl Ether	3.366	73	459794	9.572	ug/l	95
26) Bromochloromethane	4.970	128	93467	9.918	ug/l	98
27) Chloroform	5.086	83	363255	10.026	ug/l	97
28) 1,1,1-Trichloroethane	5.311	97	283682	9.893	ug/l	98
29) 1,1-Dichloropropene	5.520	75	242853	10.647	ug/l	100
30) Carbon Tetrachloride	5.520	117	243702	10.021	ug/l	97
31) Isopropyl Ether	3.999	45	434001	9.287	ug/l	83
32) Ethyl-t-butyl ether	4.507	59	394080	9.599	ug/l	96
33) Tert-Amyl methyl ether	5.944	73	388432	10.592	ug/l	98
34) Propionitrile	4.777	54	90023	59.732	ug/l	99
35) Benzene	5.771	78	776661	10.224	ug/l	97
36) 1,2-Dichloroethane	5.793	62	242968	10.190	ug/l	99
37) Trichloroethene	6.539	130	176839	9.566	ug/l	99
38) 1,2-Dichloropropane	6.790	63	221674	10.689	ug/l	98
39) Methacrylonitrile	4.977	41	59022	10.831	ug/l	92
40) Methyl acrylate	4.848	55	97469	10.347	ug/l	98
41) Tetrahydrofuran	5.060	42	61257	21.222	ug/l	94
42) 1-Chlorobutane	5.456	56	333116	10.466	ug/l	100
43) Dibromomethane	6.915	93	113372	10.180	ug/l	96
44) Bromodichloromethane	7.105	83	260417	10.018	ug/l	97

Data Path : Z:\voasrv\HPCHEM1\MSVOA_U\Data\VU101422\
 Data File : VU051426.D
 Acq On : 14 Oct 2022 17:38
 Operator : JC/MD
 Sample : VSTDCCC010
 Misc : 25.0mL/MSVOA_U/WATER
 ALS Vial : 10 Sample Multiplier: 1

Instrument :
 MSVOA_U
 ClientSampleId :
 VSTDCCC010EC

Quant Time: Oct 15 06:10:39 2022
 Quant Method : Z:\voasrv\HPCHEM1\MSVOA_U\Method\524U100422DW.M
 Quant Title : METHOD 524.2 VOLATILES DRINKING WATER
 QLast Update : Wed Oct 05 02:45:21 2022
 Response via : Initial Calibration

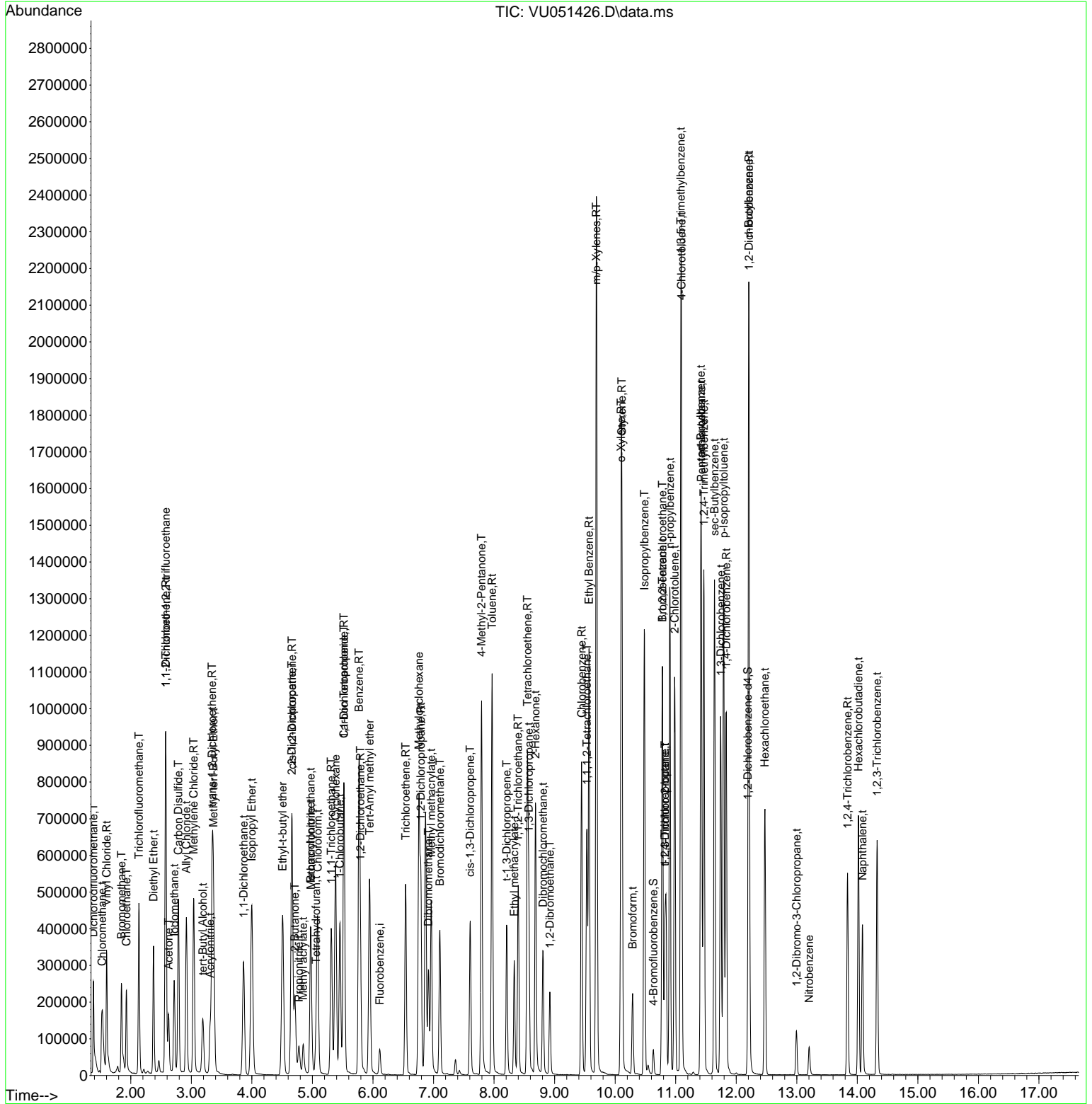
Compound	R.T.	QIon	Response	Conc	Units	Dev(Min)
45) 4-Methyl-2-Pentanone	7.793	43	639740	54.657	ug/l	99
46) t-1,4-Dichloro-2-butene	10.825	75	263379	68.215	ug/l #	52
47) Methyl methacrylate	6.960	69	202679	22.748	ug/l	93
48) Ethyl methacrylate	8.333	69	163064	10.916	ug/l	94
49) Toluene	7.967	92	452662	10.974	ug/l	98
50) t-1,3-Dichloropropene	8.208	75	228471	10.931	ug/l	99
51) cis-1,3-Dichloropropene	7.607	75	250803	10.297	ug/l	95
52) 1,1,2-Trichloroethane	8.398	97	159050	9.845	ug/l	98
53) 1,3-Dichloropropane	8.575	76	272275	10.614	ug/l	99
54) 2-Hexanone	8.684	43	446771	53.933	ug/l	100
55) Dibromochloromethane	8.809	129	176029	10.000	ug/l	98
56) 1,2-Dibromoethane	8.922	107	145412	10.054	ug/l	100
58) Tetrachloroethene	8.552	164	182023	9.738	ug/l	99
59) Chlorobenzene	9.446	112	455587	10.016	ug/l	99
60) 1,1,1,2-Tetrachloroethane	9.533	131	177957	9.974	ug/l	98
61) Pentachloroethane	11.423	117	128029	10.369	ug/l	84
62) Hexachloroethane	12.471	117	146984	10.315	ug/l	95
63) Ethyl Benzene	9.568	91	755772	10.821	ug/l	99
64) m/p-Xylenes	9.690	106	660999	19.678	ug/l	97
65) o-Xylene	10.099	106	295682	11.045	ug/l	98
66) Styrene	10.111	104	523882	9.619	ug/l	98
67) Bromoform	10.288	173	98937	9.738	ug/l	99
69) Isopropylbenzene	10.484	105	725313	9.024	ug/l	98
70) 1,1,2,2-Tetrachloroethane	10.780	83	205547	9.964	ug/l	97
71) 1,2,3-Trichloropropane	10.825	75	263379	15.730	ug/l	71
72) Bromobenzene	10.780	156	189280	10.442	ug/l	99
73) n-propylbenzene	10.906	120	216228	9.612	ug/l	98
74) 2-Chlorotoluene	10.983	126	200380	11.409	ug/l	96
75) 1,3,5-Trimethylbenzene	11.086	105	706057	9.641	ug/l	99
76) 4-Chlorotoluene	11.095	126	211237	10.023	ug/l	91
77) tert-Butylbenzene	11.417	119	602438	10.987	ug/l	99
78) 1,2,4-Trimethylbenzene	11.465	105	742404	9.724	ug/l	98
79) sec-Butylbenzene	11.642	105	868144	9.436	ug/l	100
80) Nitrobenzene	13.205	77	47425	50.309	ug/l	98
81) p-Isopropyltoluene	11.793	119	722852	9.540	ug/l	99
82) 1,3-Dichlorobenzene	11.745	146	393091	10.289	ug/l	99
83) 1,4-Dichlorobenzene	11.835	146	398092	10.572	ug/l	99
84) n-Butylbenzene	12.208	91	625865	9.063	ug/l	97
85) 1,2-Dichlorobenzene	12.211	146	386482	10.269	ug/l	99
86) 1,2-Dibromo-3-Chloropr...	12.996	75	33456	10.489	ug/l	88
87) 1,2,4-Trichlorobenzene	13.838	180	169432	8.032	ug/l	97
88) Hexachlorobutadiene	14.018	225	124634	9.528	ug/l	99
89) Naphthalene	14.086	128	332682	9.113	ug/l	98
90) 1,2,3-Trichlorobenzene	14.327	180	193116	8.733	ug/l	99

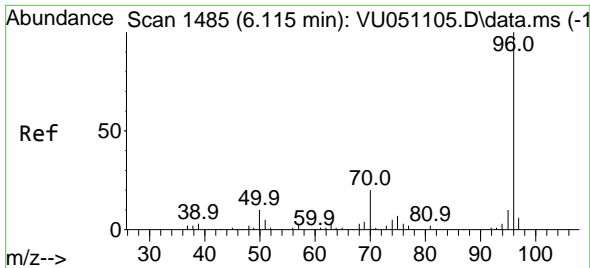
(#) = qualifier out of range (m) = manual integration (+) = signals summed

Data Path : Z:\voasrv\HPCHEM1\MSVOA_U\Data\VU01422\
 Data File : VU051426.D
 Acq On : 14 Oct 2022 17:38
 Operator : JC/MD
 Sample : VSTDCCC010
 Misc : 25.0mL/MSVOA_U/WATER
 ALS Vial : 10 Sample Multiplier: 1

Instrument :
 MSVOA_U
 ClientSampleId :
 VSTDCCC010EC

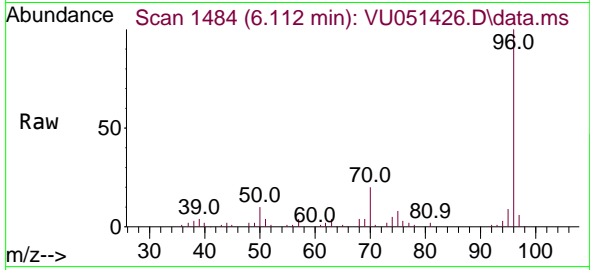
Quant Time: Oct 15 06:10:39 2022
 Quant Method : Z:\voasrv\HPCHEM1\MSVOA_U\Method\524U100422DW.M
 Quant Title : METHOD 524.2 VOLATILES DRINKING WATER
 QLast Update : Wed Oct 05 02:45:21 2022
 Response via : Initial Calibration





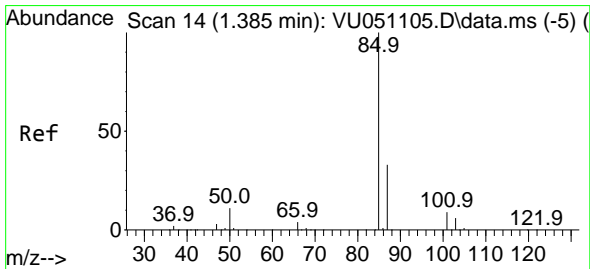
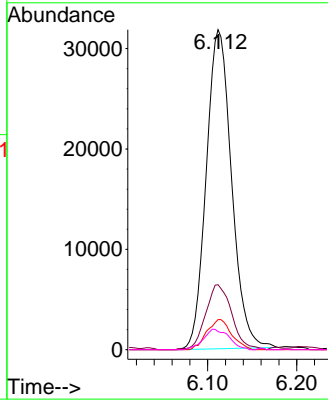
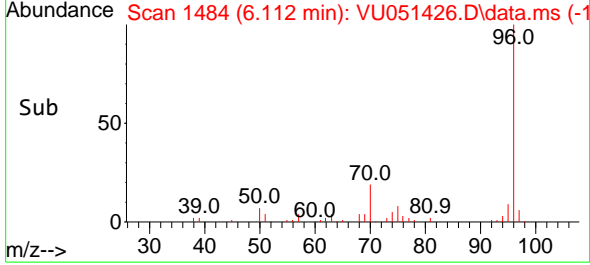
#1
 Fluorobenzene
 Concen: 1.000 ug/l
 RT: 6.112 min Scan# 14
 Delta R.T. -0.003 min
 Lab File: VU051426.D
 Acq: 14 Oct 2022 17:38

Instrument : MSVOA_U
 ClientSampleId : VSTDCCC010EC

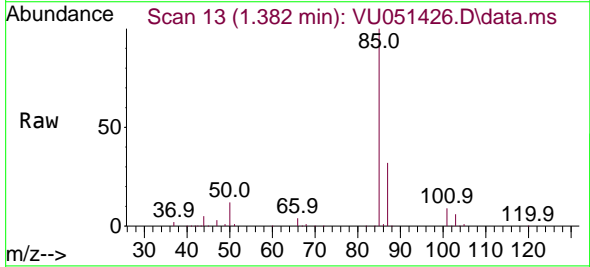


Tgt Ion: 96 Resp: 62844

Ion	Ratio	Lower	Upper
96	100		
70	20.9	16.7	25.1
95	9.2	7.4	11.0
97	0.0	0.0	0.0

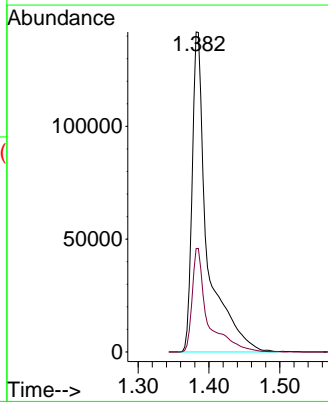
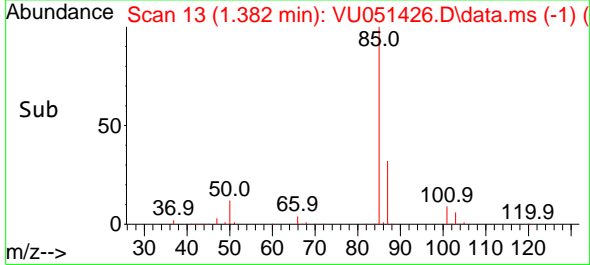


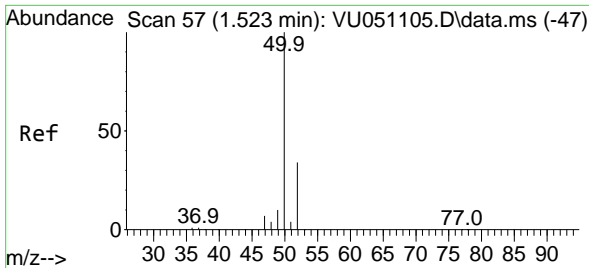
#2
 Dichlorodifluoromethane
 Concen: 10.281 ug/l
 RT: 1.382 min Scan# 13
 Delta R.T. -0.003 min
 Lab File: VU051426.D
 Acq: 14 Oct 2022 17:38



Tgt Ion: 85 Resp: 212355

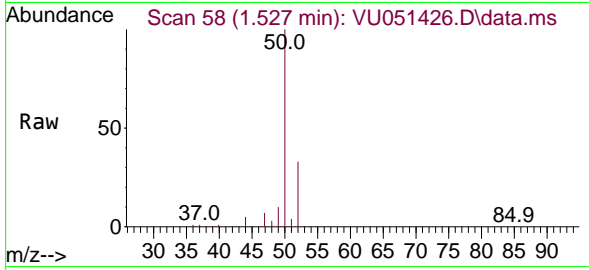
Ion	Ratio	Lower	Upper
85	100		
87	32.3	16.3	48.8



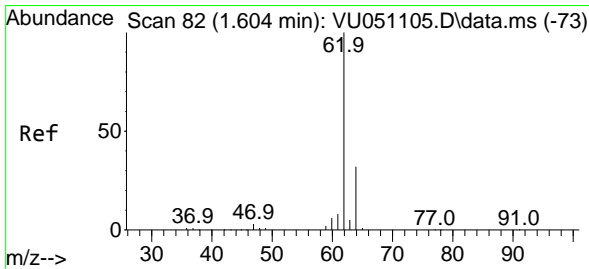
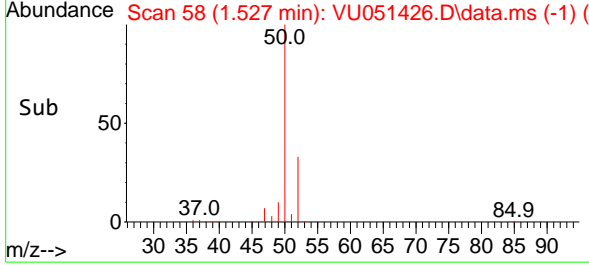
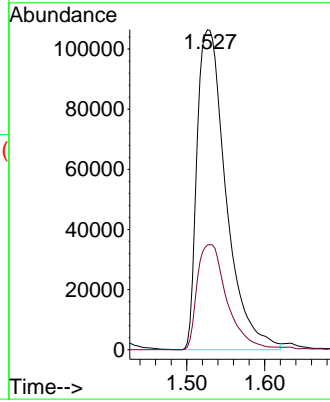


#3
 Chloromethane
 Concen: 9.925 ug/l
 RT: 1.527 min Scan# 51
 Delta R.T. 0.003 min
 Lab File: VU051426.D
 Acq: 14 Oct 2022 17:38

Instrument :
 MSVOA_U
 ClientSampleId :
 VSTDCCC010EC

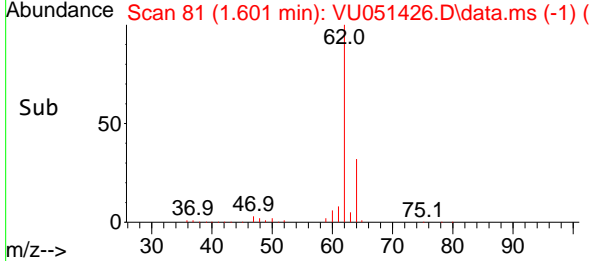
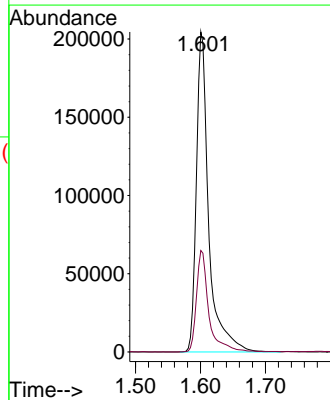
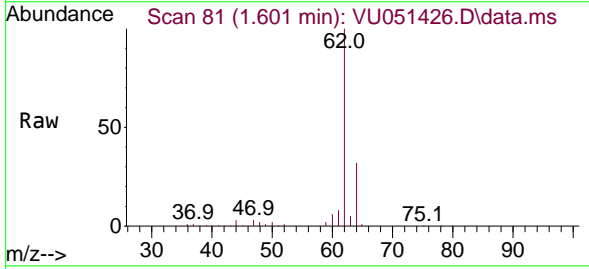


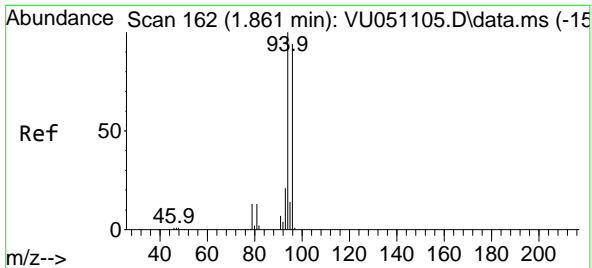
Tgt Ion: 50 Resp: 274985
 Ion Ratio Lower Upper
 50 100
 52 32.7 26.1 39.1



#4
 Vinyl Chloride
 Concen: 10.273 ug/l
 RT: 1.601 min Scan# 81
 Delta R.T. -0.003 min
 Lab File: VU051426.D
 Acq: 14 Oct 2022 17:38

Tgt Ion: 62 Resp: 270236
 Ion Ratio Lower Upper
 62 100
 64 31.6 25.5 38.3

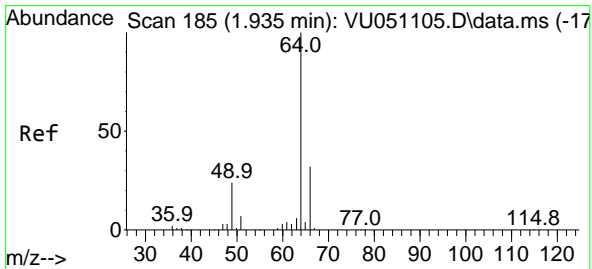
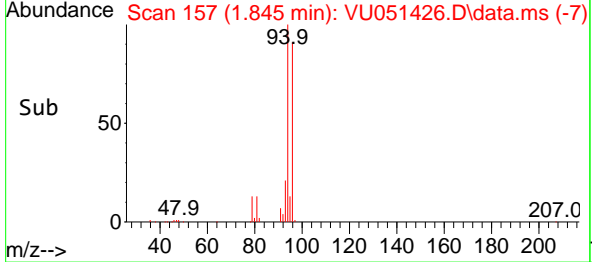
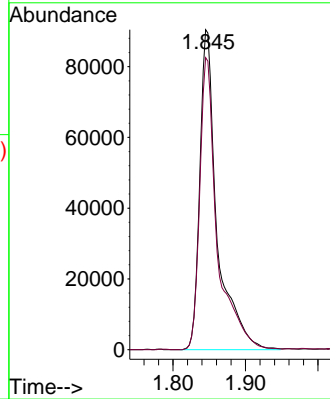
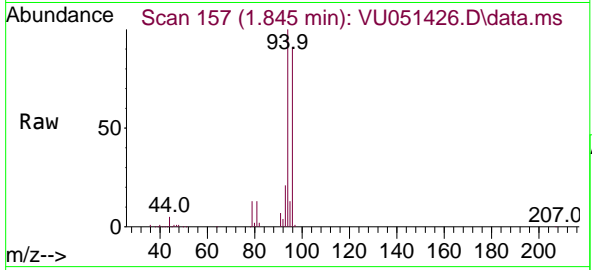




#5
 Bromomethane
 Concen: 8.981 ug/l
 RT: 1.845 min Scan# 11
 Delta R.T. -0.016 min
 Lab File: VU051426.D
 Acq: 14 Oct 2022 17:38

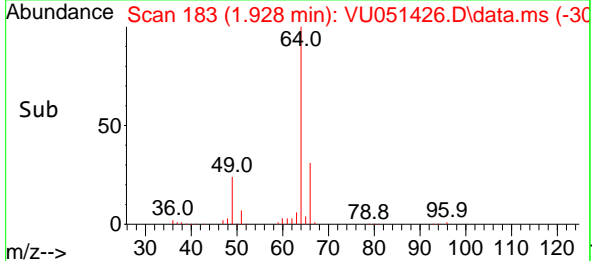
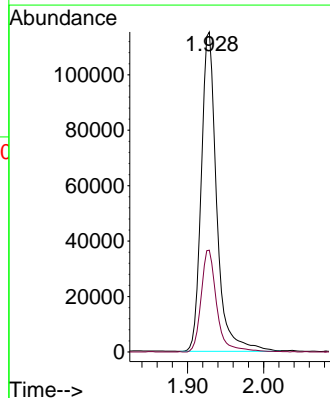
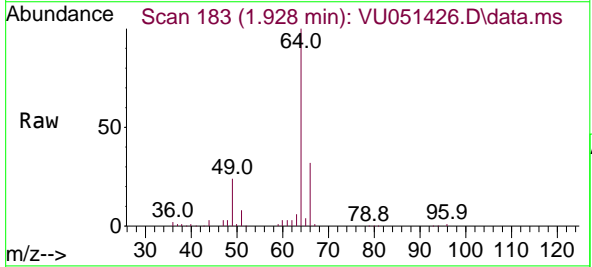
Instrument :
 MSVOA_U
 ClientSampleId :
 VSTDCCC010EC

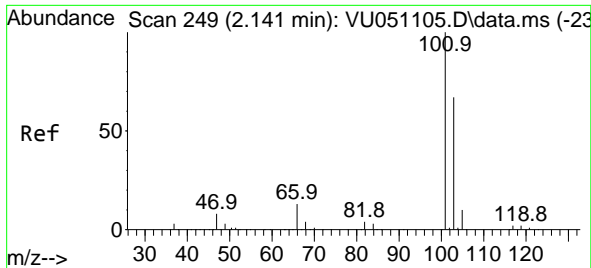
Tgt Ion: 94 Resp: 150410
 Ion Ratio Lower Upper
 94 100
 96 91.3 73.0 109.6



#6
 Chloroethane
 Concen: 9.833 ug/l
 RT: 1.928 min Scan# 183
 Delta R.T. -0.006 min
 Lab File: VU051426.D
 Acq: 14 Oct 2022 17:38

Tgt Ion: 64 Resp: 162301
 Ion Ratio Lower Upper
 64 100
 66 31.8 25.8 38.6

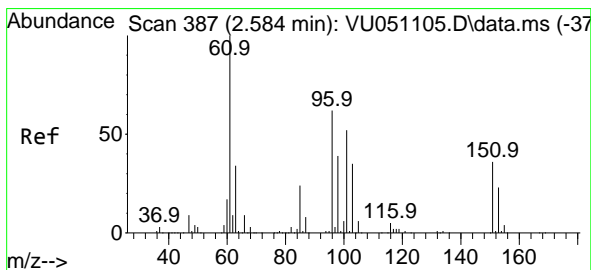
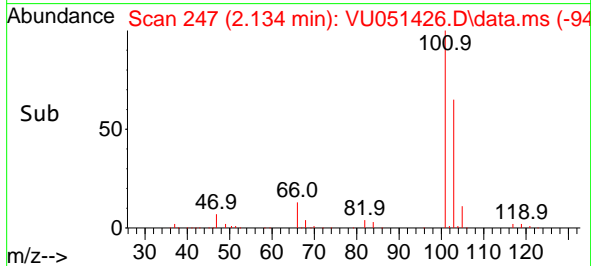
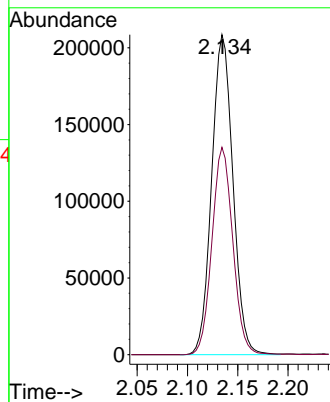
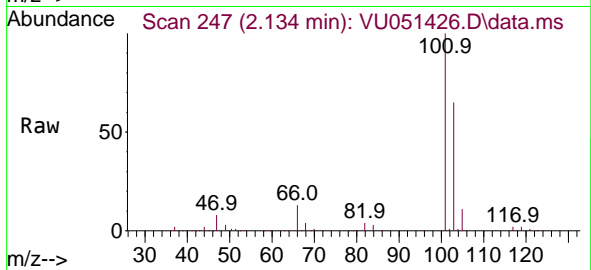




#7
 Trichlorofluoromethane
 Concen: 10.263 ug/l
 RT: 2.134 min Scan# 247
 Delta R.T. -0.006 min
 Lab File: VU051426.D
 Acq: 14 Oct 2022 17:38

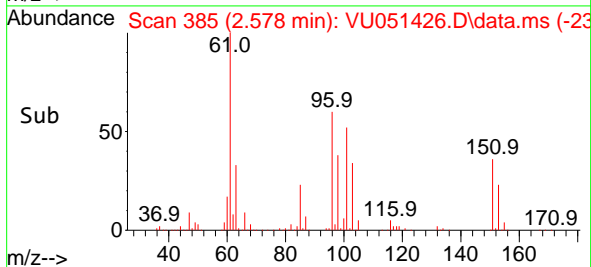
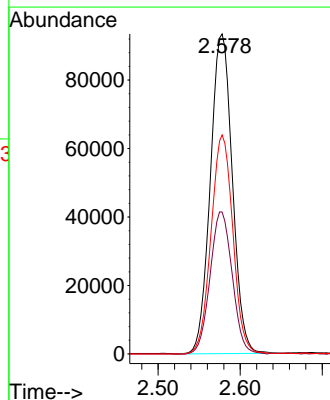
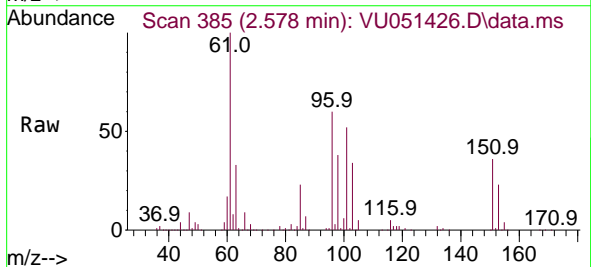
Instrument :
 MSVOA_U
 ClientSampleId :
 VSTDCCC010EC

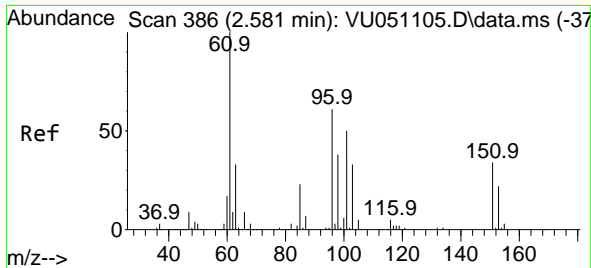
Tgt Ion:101 Resp: 305996
 Ion Ratio Lower Upper
 101 100
 103 64.8 51.8 77.6



#8
 1,1,2-Trichloro-1,2,2-trifluoroethane
 Concen: 10.147 ug/l
 RT: 2.578 min Scan# 385
 Delta R.T. -0.006 min
 Lab File: VU051426.D
 Acq: 14 Oct 2022 17:38

Tgt Ion:101 Resp: 174120
 Ion Ratio Lower Upper
 101 100
 85 44.7 36.4 54.6
 151 67.8 59.1 88.7



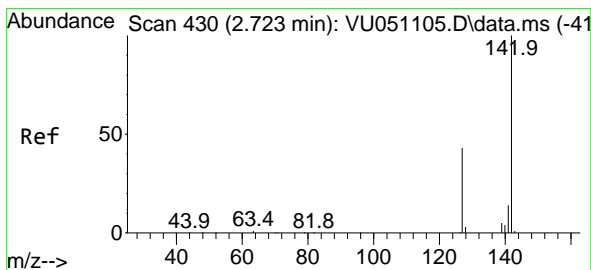
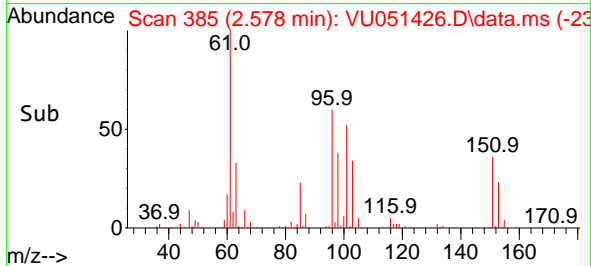
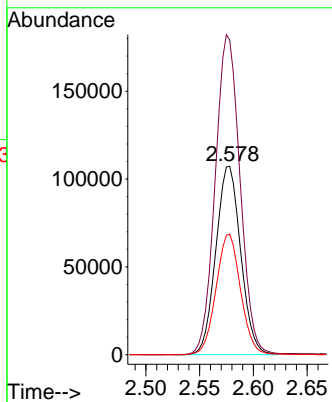
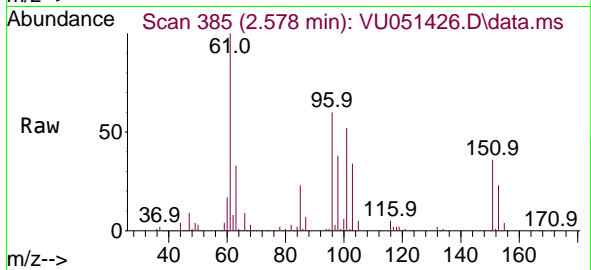


#9
 1,1-Dichloroethene
 Concen: 9.557 ug/l
 RT: 2.578 min Scan# 385
 Delta R.T. -0.003 min
 Lab File: VU051426.D
 Acq: 14 Oct 2022 17:38

Instrument : MSVOA_U
 ClientSampleId : VSTDCCC010EC

Tgt Ion: 96 Resp: 172778

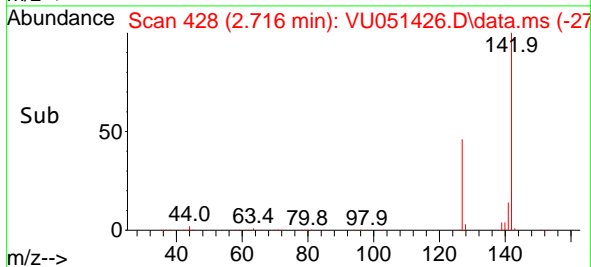
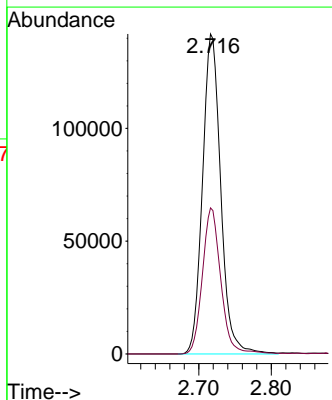
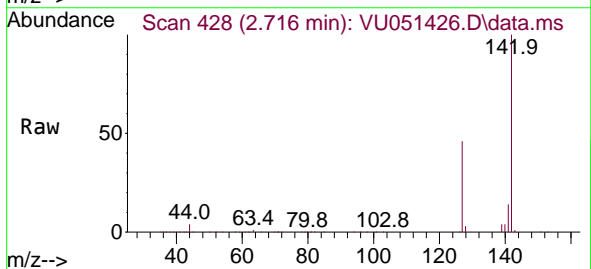
Ion	Ratio	Lower	Upper
96	100		
61	166.9	0.0	510.6
98	64.0	0.0	124.6

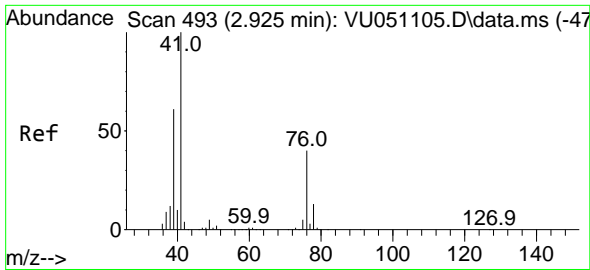


#10
 Iodomethane
 Concen: 9.408 ug/l
 RT: 2.716 min Scan# 428
 Delta R.T. -0.006 min
 Lab File: VU051426.D
 Acq: 14 Oct 2022 17:38

Tgt Ion: 142 Resp: 247964

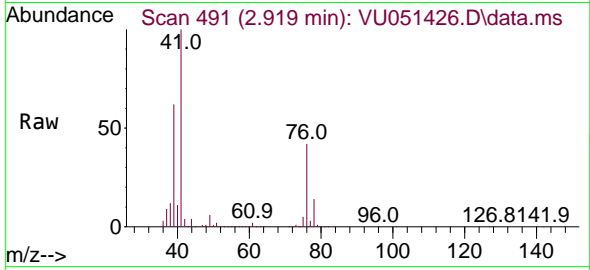
Ion	Ratio	Lower	Upper
142	100		
127	46.0	38.2	57.2



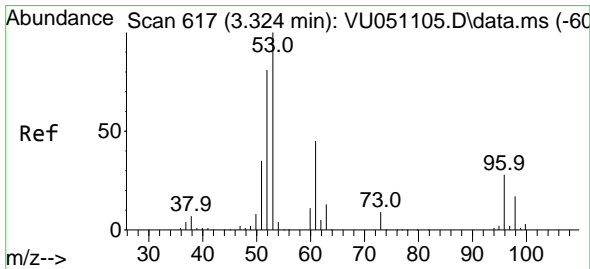
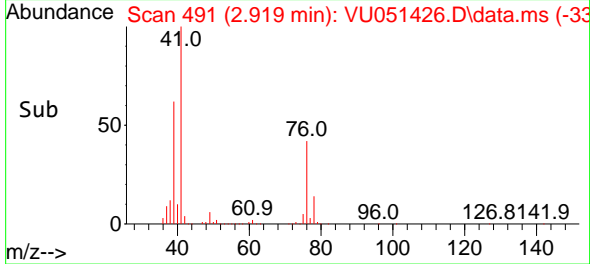
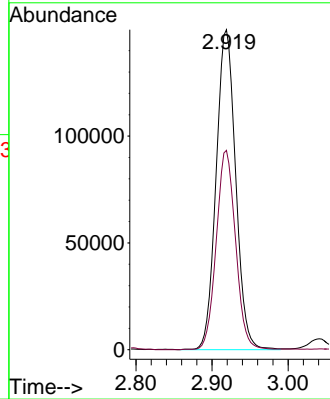


#11
 Allyl Chloride
 Concen: 9.459 ug/l
 RT: 2.919 min Scan# 491
 Delta R.T. -0.006 min
 Lab File: VU051426.D
 Acq: 14 Oct 2022 17:38

Instrument : MSVOA_U
 ClientSampleId : VSTDCCC010EC

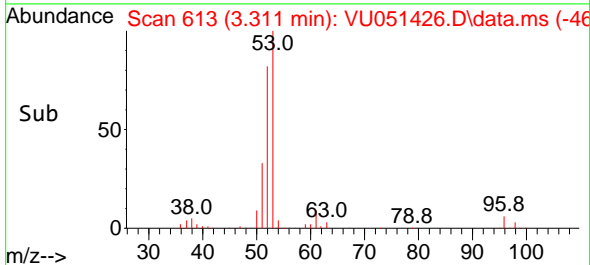
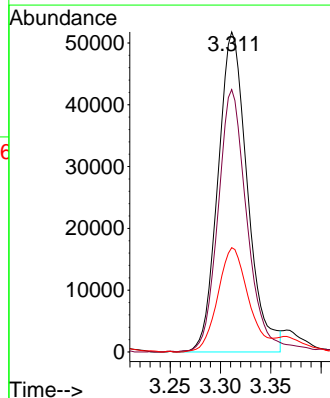
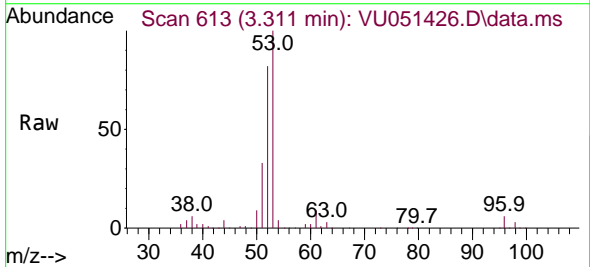


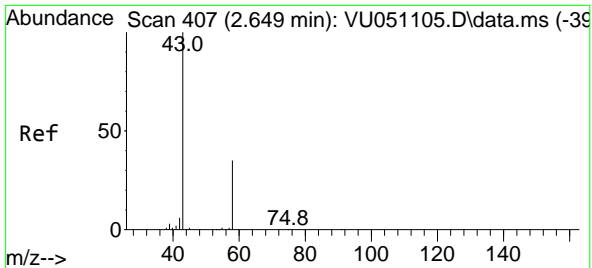
Tgt Ion: 41 Resp: 267553
 Ion Ratio Lower Upper
 41 100
 39 61.2 53.2 79.8



#12
 Acrylonitrile
 Concen: 18.672 ug/l
 RT: 3.311 min Scan# 613
 Delta R.T. -0.013 min
 Lab File: VU051426.D
 Acq: 14 Oct 2022 17:38

Tgt Ion: 53 Resp: 105540
 Ion Ratio Lower Upper
 53 100
 52 81.2 64.6 97.0
 51 33.8 30.7 46.1

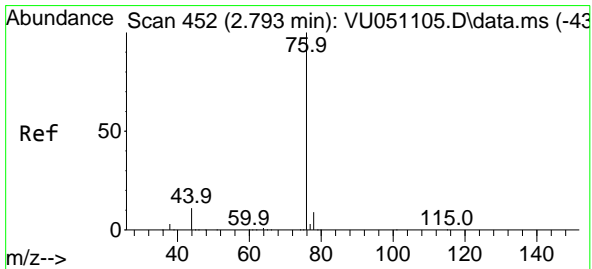
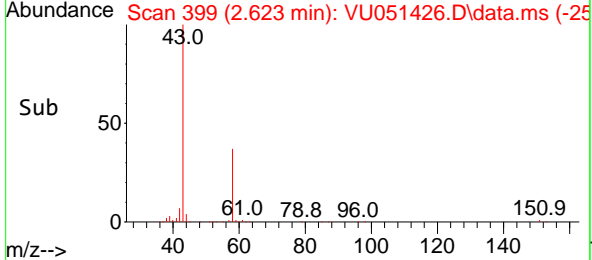
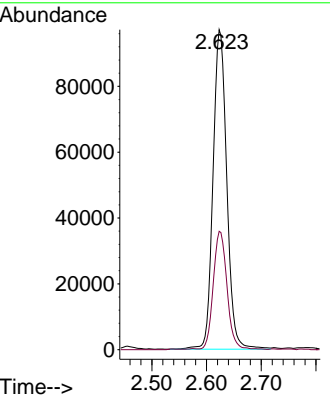
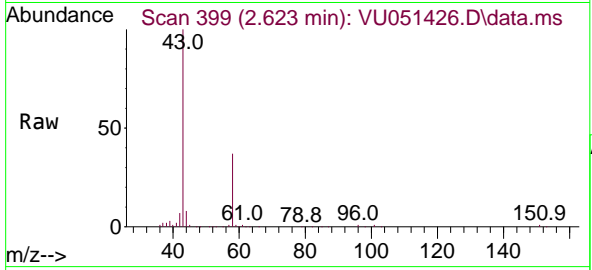




#13
 Acetone
 Concen: 55.992 ug/l
 RT: 2.623 min Scan# 399
 Delta R.T. -0.026 min
 Lab File: VU051426.D
 Acq: 14 Oct 2022 17:38

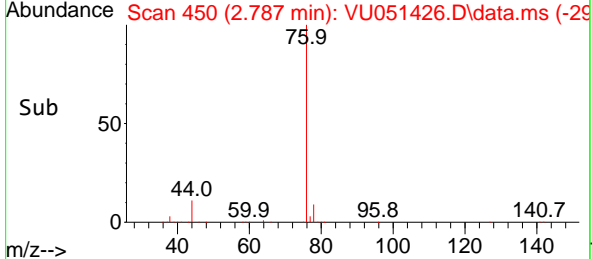
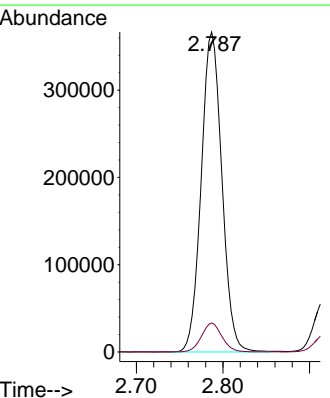
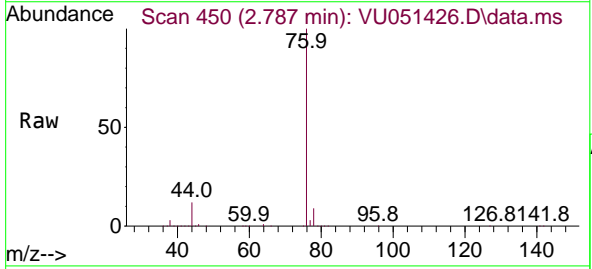
Instrument : MSVOA_U
 ClientSampleId : VSTDC010EC

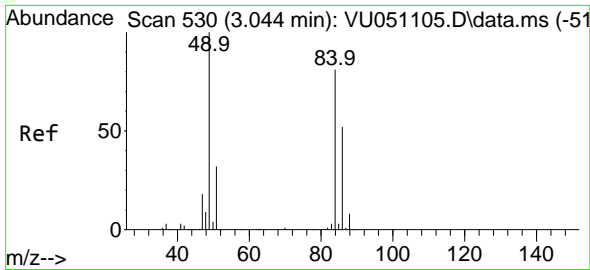
Tgt Ion: 43 Resp: 169313
 Ion Ratio Lower Upper
 43 100
 58 36.9 26.2 39.2



#14
 Carbon Disulfide
 Concen: 8.864 ug/l
 RT: 2.787 min Scan# 450
 Delta R.T. -0.006 min
 Lab File: VU051426.D
 Acq: 14 Oct 2022 17:38

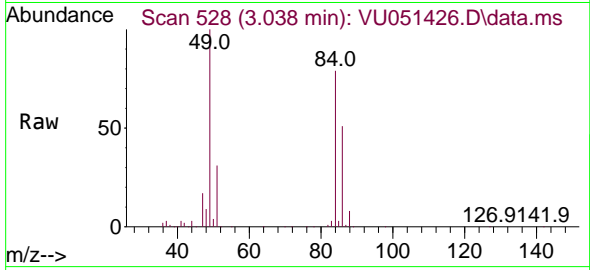
Tgt Ion: 76 Resp: 606885
 Ion Ratio Lower Upper
 76 100
 78 9.0 7.4 11.0



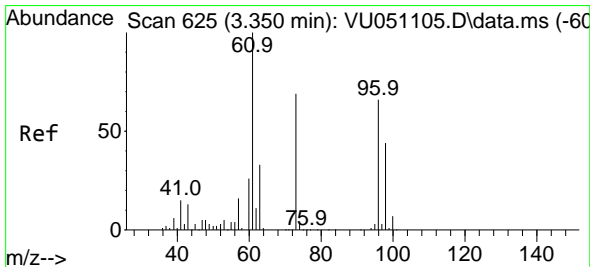
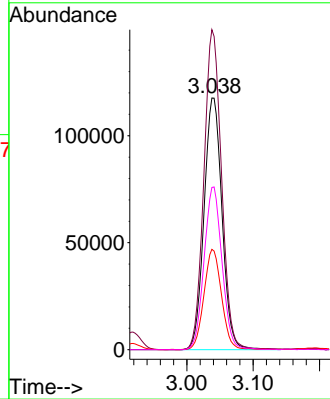
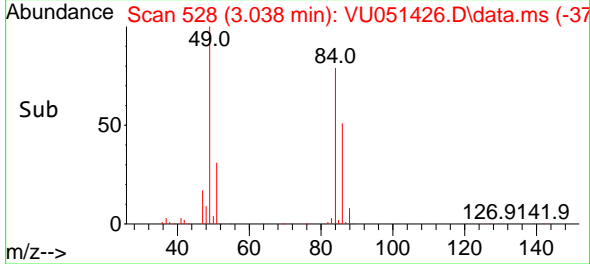


#15
 Methylene Chloride
 Concen: 10.269 ug/l
 RT: 3.038 min Scan# 51
 Delta R.T. -0.006 min
 Lab File: VU051426.D
 Acq: 14 Oct 2022 17:38

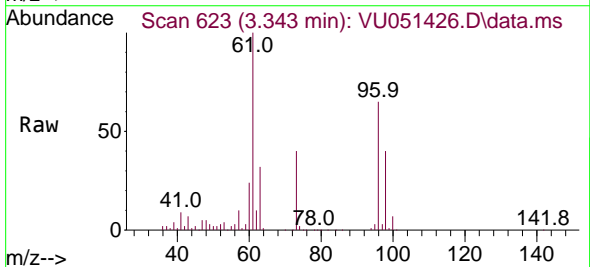
Instrument :
 MSVOA_U
 ClientSampleId :
 VSTDCCC010EC



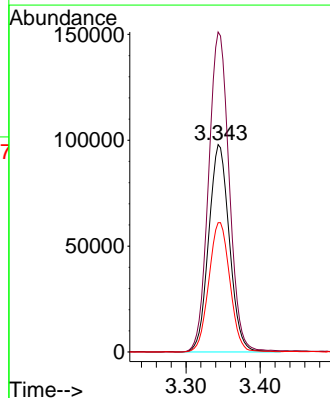
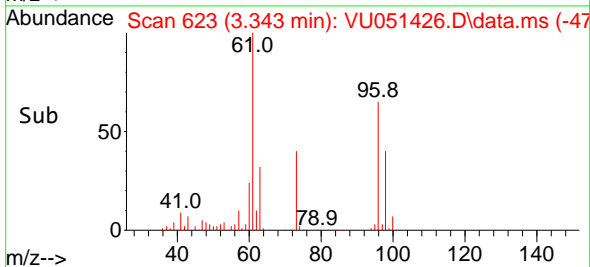
Tgt Ion: 84 Resp: 221596
 Ion Ratio Lower Upper
 84 100
 49 127.1 104.6 157.0
 51 39.9 0.0 81.4
 86 64.5 52.6 78.8

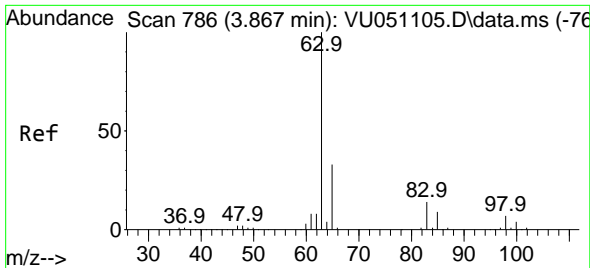


#16
 trans-1,2-Dichloroethene
 Concen: 9.283 ug/l
 RT: 3.343 min Scan# 623
 Delta R.T. -0.006 min
 Lab File: VU051426.D
 Acq: 14 Oct 2022 17:38



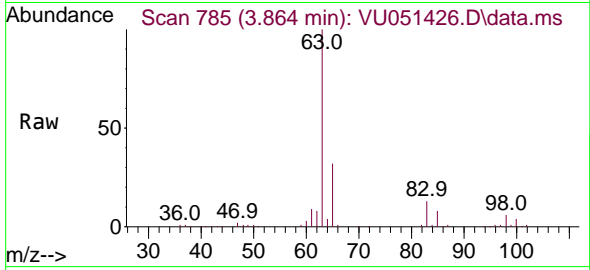
Tgt Ion: 96 Resp: 189531
 Ion Ratio Lower Upper
 96 100
 61 154.4 123.4 185.0
 98 62.4 51.6 77.4



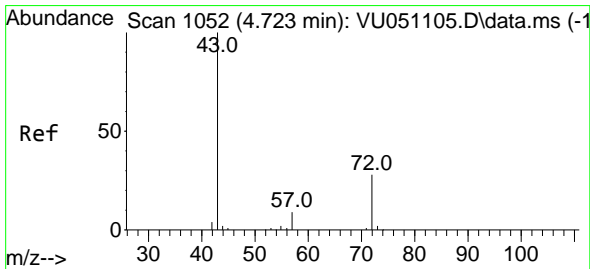
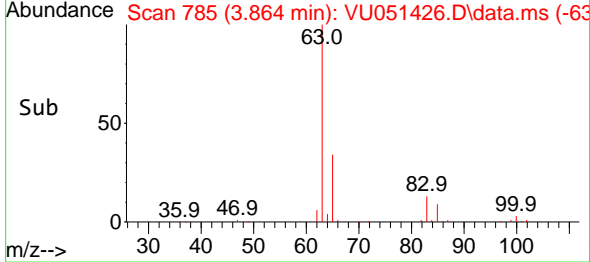
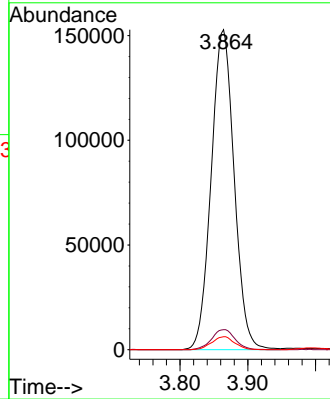


#17
 1,1-Dichloroethane
 Concen: 10.106 ug/l
 RT: 3.864 min Scan# 785
 Delta R.T. -0.003 min
 Lab File: VU051426.D
 Acq: 14 Oct 2022 17:38

Instrument : MSVOA_U
 ClientSampleId : VSTDCCC010EC

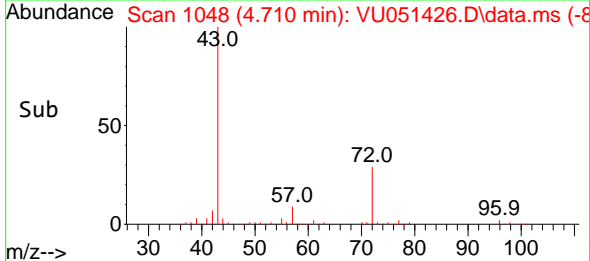
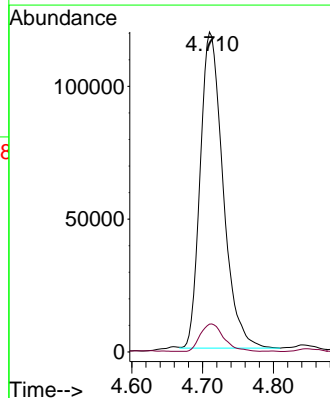
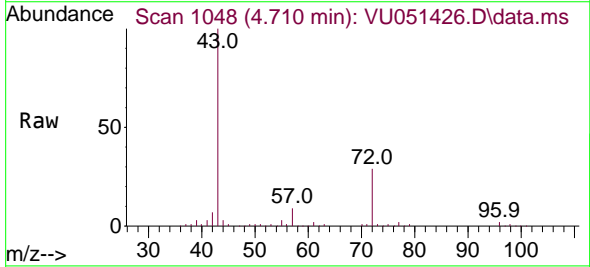


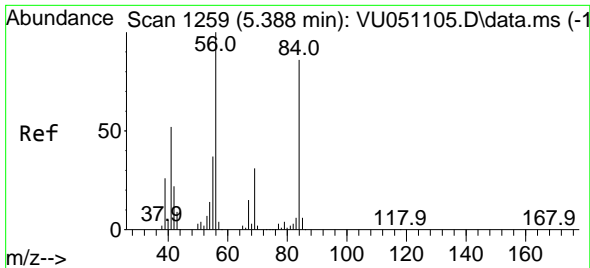
Tgt Ion: 63 Resp: 359759
 Ion Ratio Lower Upper
 63 100
 98 6.3 3.4 10.2
 100 4.0 2.0 6.0



#18
 2-Butanone
 Concen: 57.647 ug/l
 RT: 4.710 min Scan# 1048
 Delta R.T. -0.013 min
 Lab File: VU051426.D
 Acq: 14 Oct 2022 17:38

Tgt Ion: 43 Resp: 265699
 Ion Ratio Lower Upper
 43 100
 57 8.6 0.0 18.0



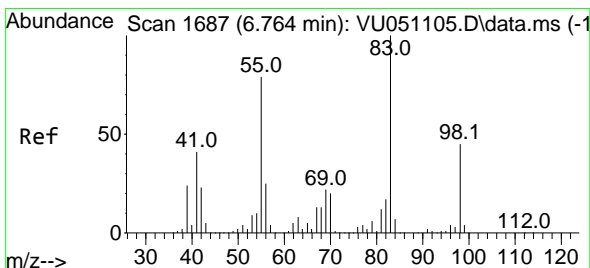
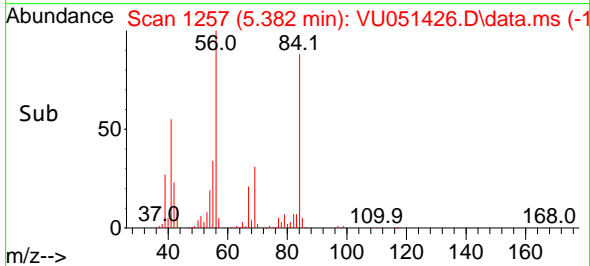
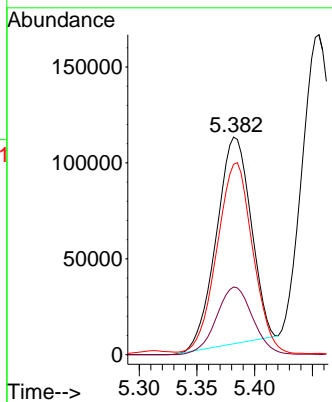
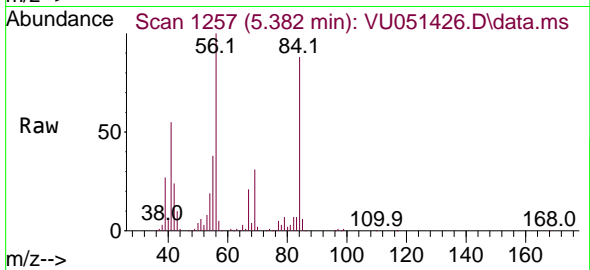


#19
 Cyclohexane
 Concen: 9.398 ug/l
 RT: 5.382 min Scan# 11
 Delta R.T. -0.006 min
 Lab File: VU051426.D
 Acq: 14 Oct 2022 17:38

Instrument : MSVOA_U
 ClientSampleId : VSTDCCC010EC

Tgt Ion: 56 Resp: 224408

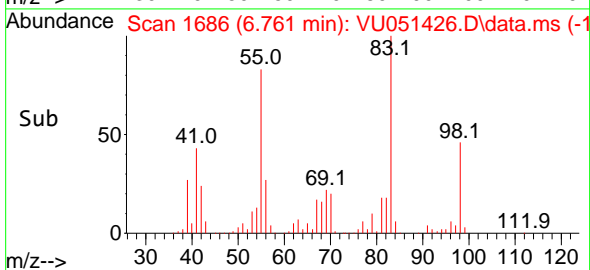
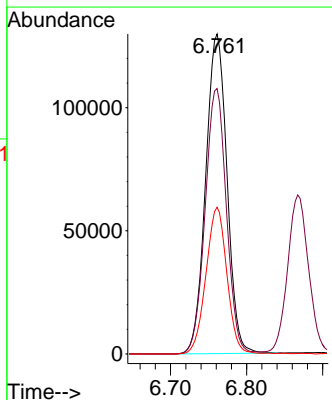
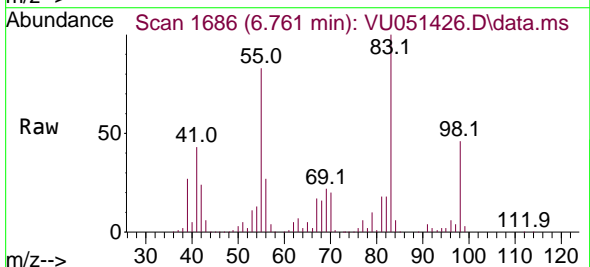
Ion	Ratio	Lower	Upper
56	100		
69	34.3	24.2	36.4
84	94.7	63.4	95.2

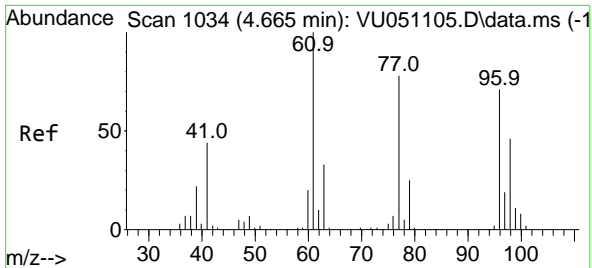


#20
 Methylcyclohexane
 Concen: 10.581 ug/l
 RT: 6.761 min Scan# 1686
 Delta R.T. -0.003 min
 Lab File: VU051426.D
 Acq: 14 Oct 2022 17:38

Tgt Ion: 83 Resp: 252895

Ion	Ratio	Lower	Upper
83	100		
55	82.1	63.0	94.4
98	44.8	35.7	53.5

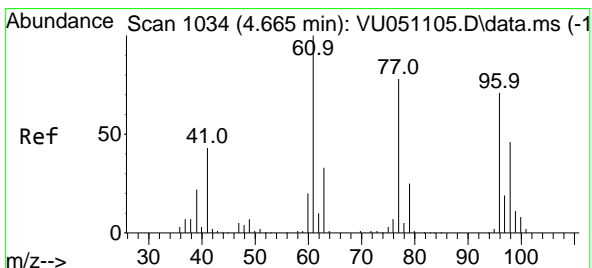
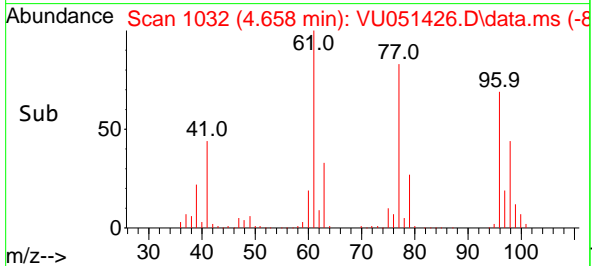
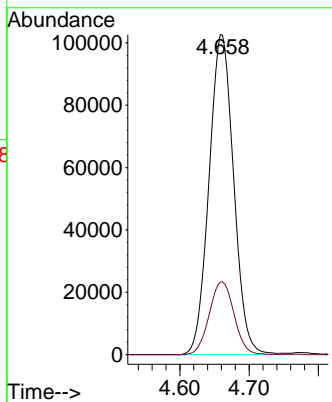
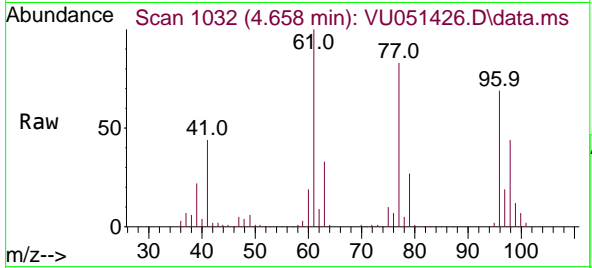




#21
 2,2-Dichloropropane
 Concen: 10.434 ug/l
 RT: 4.658 min Scan# 1032
 Delta R.T. -0.006 min
 Lab File: VU051426.D
 Acq: 14 Oct 2022 17:38

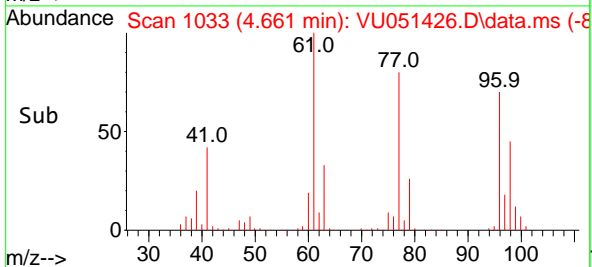
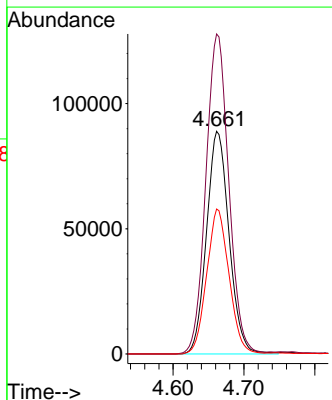
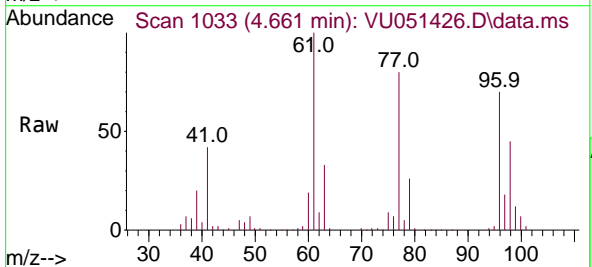
Instrument : MSVOA_U
 ClientSampleId : VSTDCCC010EC

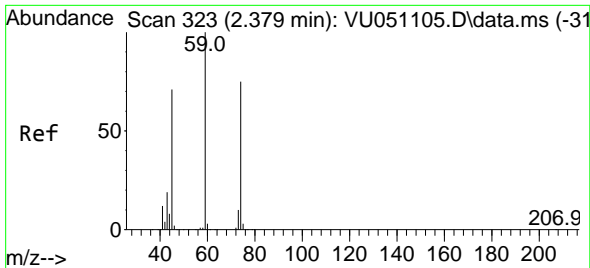
Tgt Ion: 77 Resp: 253244
 Ion Ratio Lower Upper
 77 100
 97 23.0 18.5 27.7



#22
 cis-1,2-Dichloroethene
 Concen: 10.036 ug/l
 RT: 4.661 min Scan# 1033
 Delta R.T. -0.003 min
 Lab File: VU051426.D
 Acq: 14 Oct 2022 17:38

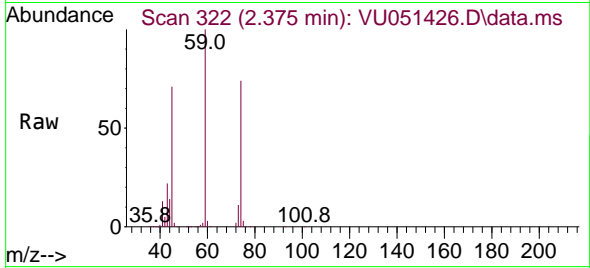
Tgt Ion: 96 Resp: 196737
 Ion Ratio Lower Upper
 96 100
 61 145.6 0.0 375.8
 98 64.5 31.6 95.0



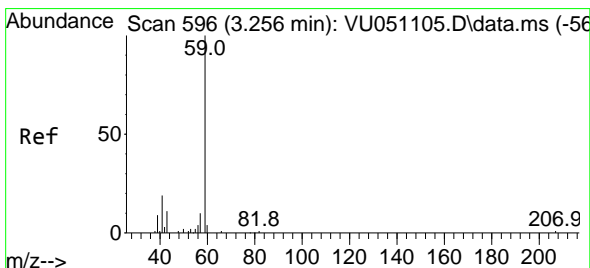
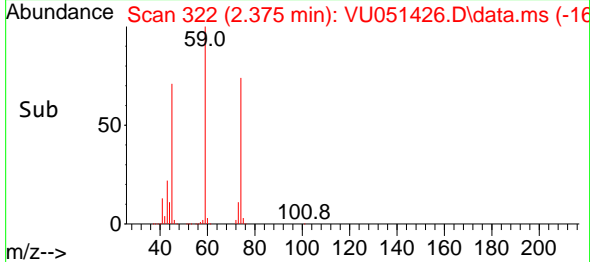
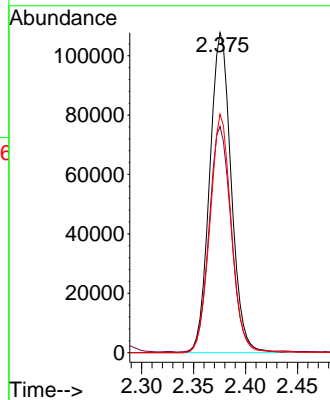


#23
 Diethyl Ether
 Concen: 9.624 ug/l
 RT: 2.375 min Scan# 311
 Delta R.T. -0.003 min
 Lab File: VU051426.D
 Acq: 14 Oct 2022 17:38

Instrument : MSVOA_U
 ClientSampleId : VSTDC010EC

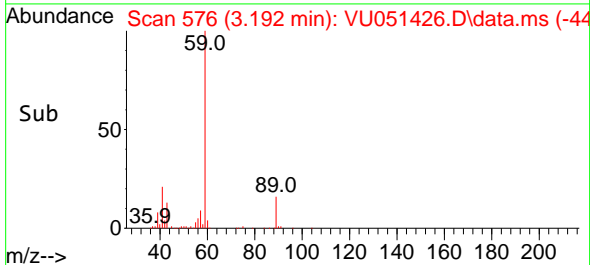
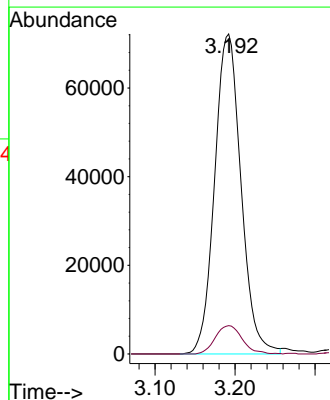
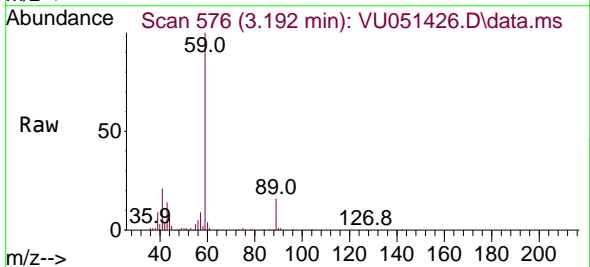


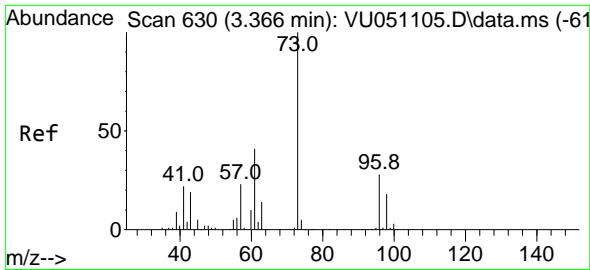
Tgt Ion: 59 Resp: 155082
 Ion Ratio Lower Upper
 59 100
 45 72.3 56.0 84.0
 74 73.8 57.6 86.4



#24
 tert-Butyl Alcohol
 Concen: 217.357 ug/l
 RT: 3.192 min Scan# 576
 Delta R.T. -0.064 min
 Lab File: VU051426.D
 Acq: 14 Oct 2022 17:38

Tgt Ion: 59 Resp: 165289
 Ion Ratio Lower Upper
 59 100
 57 9.0 8.2 12.2

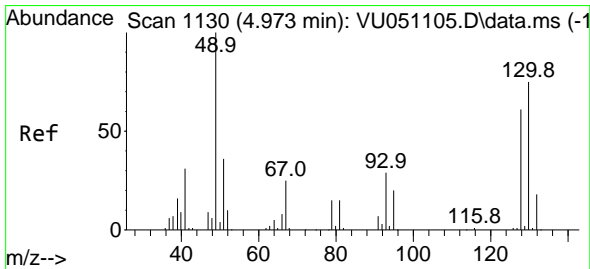
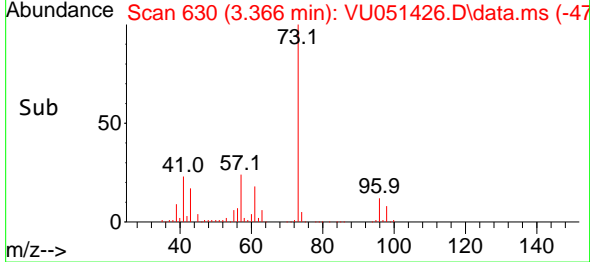
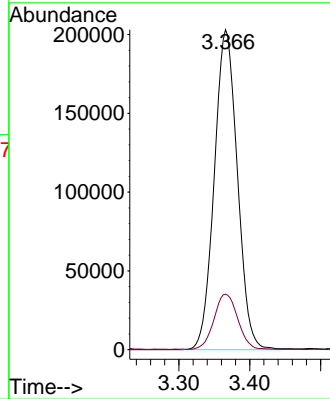
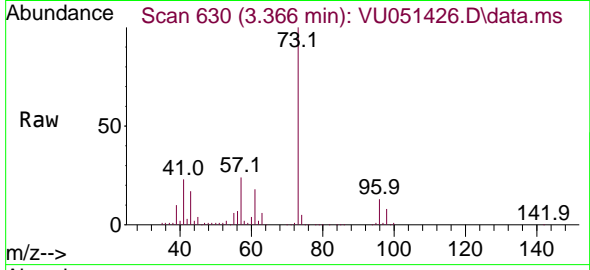




#25
 Methyl tert-Butyl Ether
 Concen: 9.572 ug/l
 RT: 3.366 min Scan# 611
 Delta R.T. -0.000 min
 Lab File: VU051426.D
 Acq: 14 Oct 2022 17:38

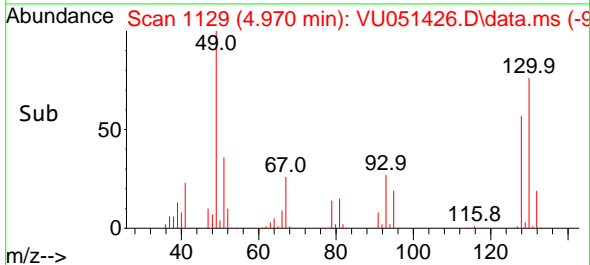
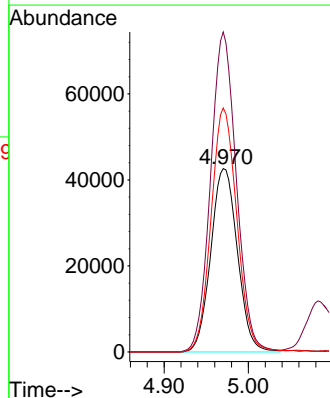
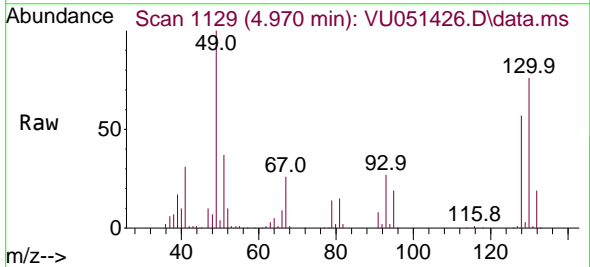
Instrument : MSVOA_U
 ClientSampleId : VSTDCCC010EC

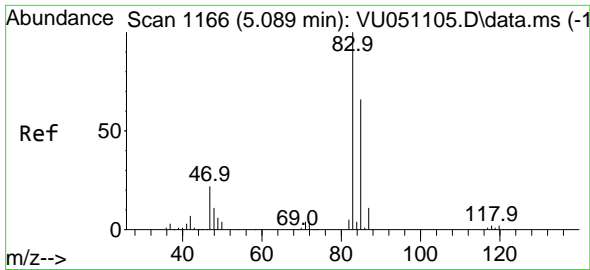
Tgt Ion: 73 Resp: 459794
 Ion Ratio Lower Upper
 73 100
 43 17.7 15.9 23.9



#26
 Bromochloromethane
 Concen: 9.918 ug/l
 RT: 4.970 min Scan# 1129
 Delta R.T. -0.003 min
 Lab File: VU051426.D
 Acq: 14 Oct 2022 17:38

Tgt Ion: 128 Resp: 93467
 Ion Ratio Lower Upper
 128 100
 49 169.0 0.0 349.2
 130 129.1 103.0 154.6

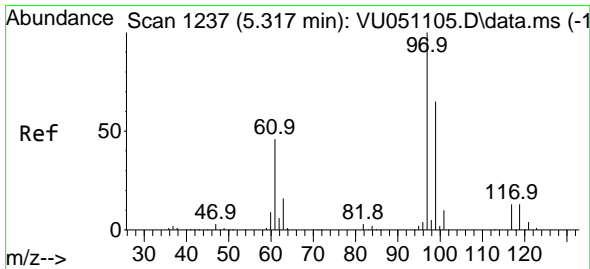
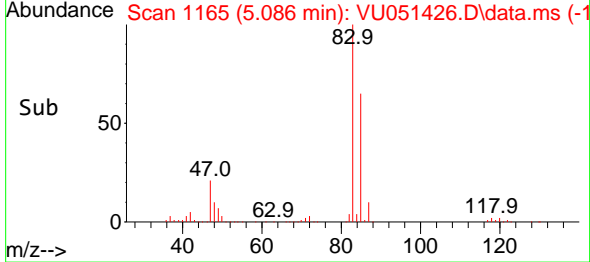
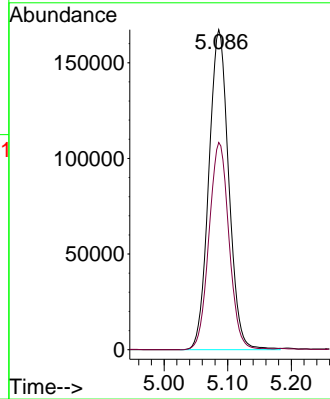
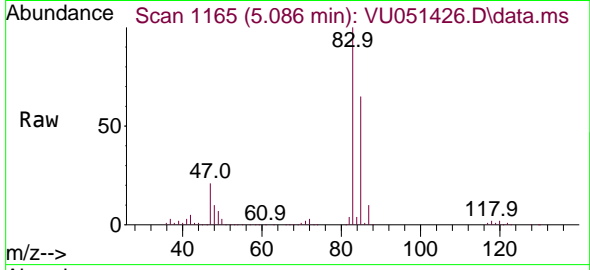




#27
 Chloroform
 Concen: 10.026 ug/l
 RT: 5.086 min Scan# 1165
 Delta R.T. -0.003 min
 Lab File: VU051426.D
 Acq: 14 Oct 2022 17:38

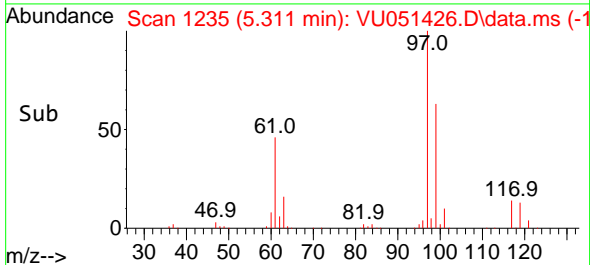
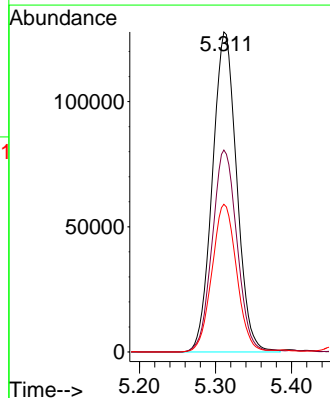
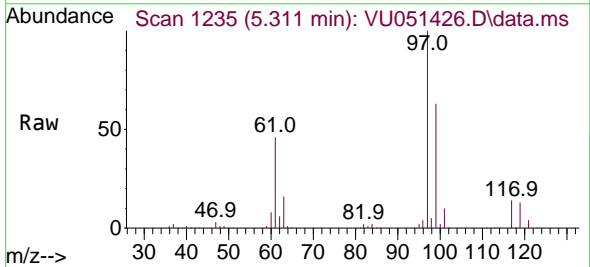
Instrument : MSVOA_U
 ClientSampleId : VSTDCCC010EC

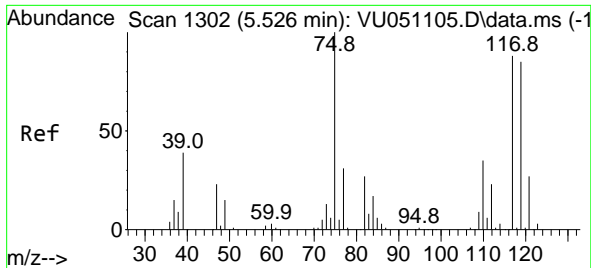
Tgt Ion: 83 Resp: 363255
 Ion Ratio Lower Upper
 83 100
 85 64.8 0.0 133.6



#28
 1,1,1-Trichloroethane
 Concen: 9.893 ug/l
 RT: 5.311 min Scan# 1235
 Delta R.T. -0.006 min
 Lab File: VU051426.D
 Acq: 14 Oct 2022 17:38

Tgt Ion: 97 Resp: 283682
 Ion Ratio Lower Upper
 97 100
 99 64.3 32.1 96.5
 61 47.1 21.8 65.4



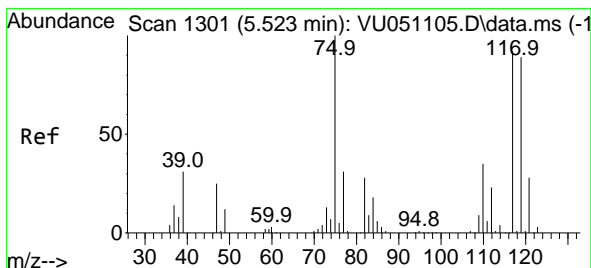
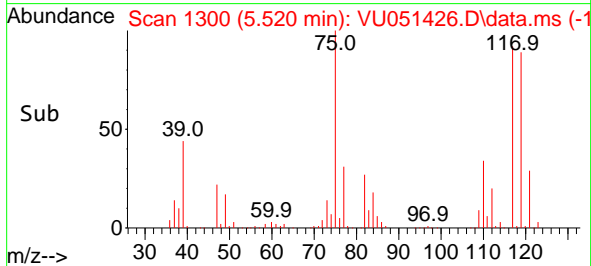
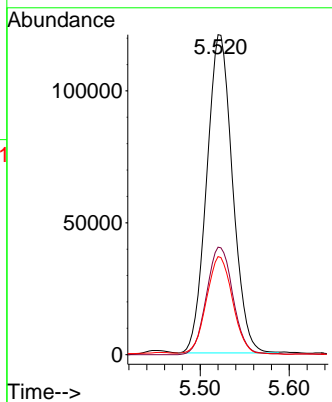
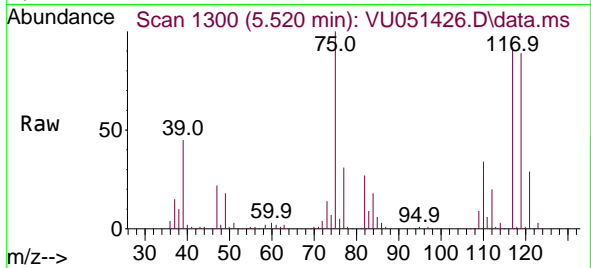


#29
 1,1-Dichloropropene
 Concen: 10.647 ug/l
 RT: 5.520 min Scan# 1300
 Delta R.T. -0.006 min
 Lab File: VU051426.D
 Acq: 14 Oct 2022 17:38

Instrument :
 MSVOA_U
 ClientSampleId :
 VSTDCCC010EC

Tgt Ion: 75 Resp: 242853

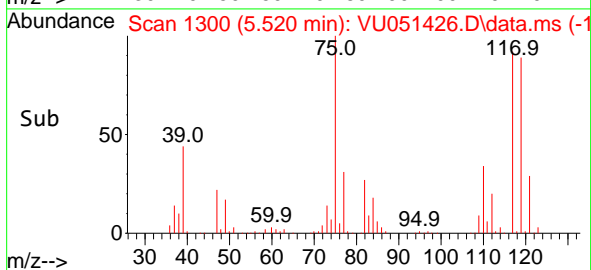
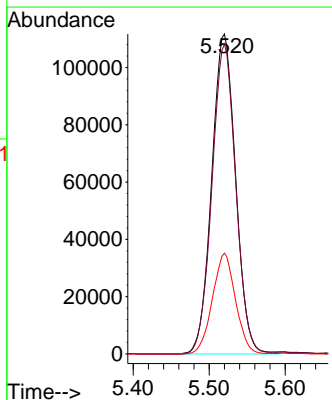
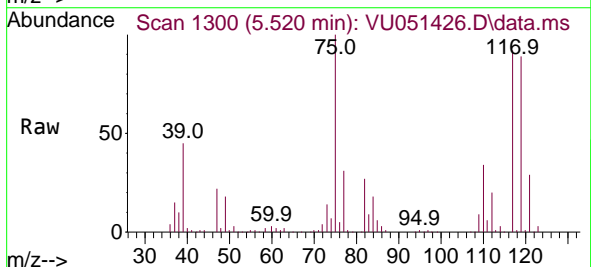
Ion	Ratio	Lower	Upper
75	100		
110	34.8	17.3	52.0
77	31.2	24.6	37.0

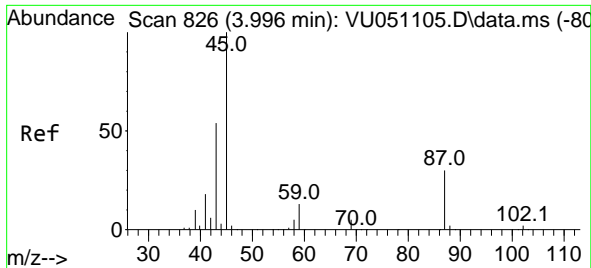


#30
 Carbon Tetrachloride
 Concen: 10.021 ug/l
 RT: 5.520 min Scan# 1300
 Delta R.T. -0.003 min
 Lab File: VU051426.D
 Acq: 14 Oct 2022 17:38

Tgt Ion: 117 Resp: 243702

Ion	Ratio	Lower	Upper
117	100		
119	96.8	74.6	112.0
121	31.5	24.2	36.4

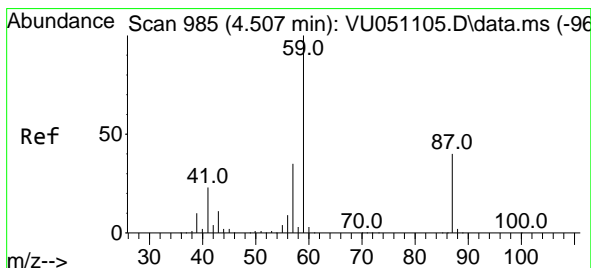
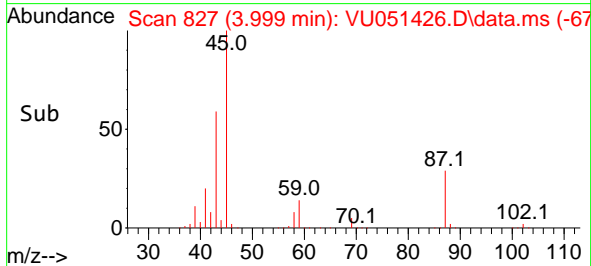
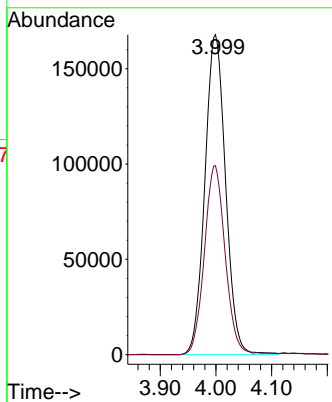
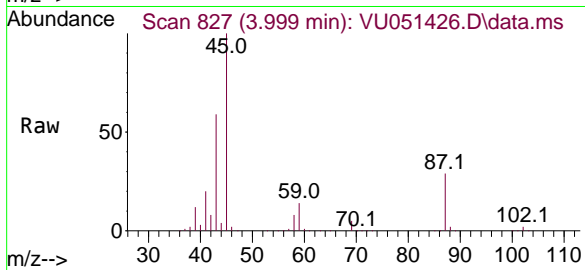




#31
 Isopropyl Ether
 Concen: 9.287 ug/l
 RT: 3.999 min Scan# 81
 Delta R.T. 0.003 min
 Lab File: VU051426.D
 Acq: 14 Oct 2022 17:38

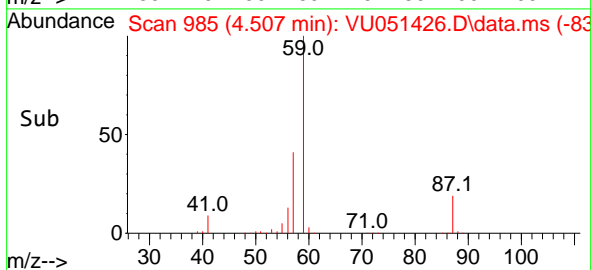
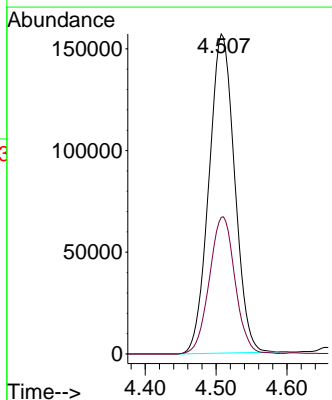
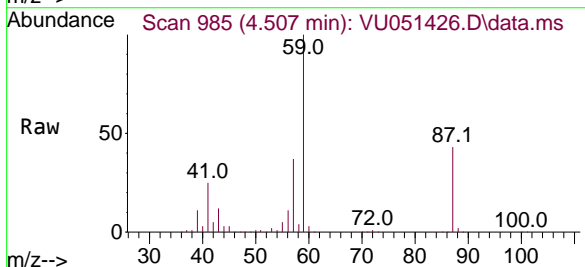
Instrument :
 MSVOA_U
 ClientSampleId :
 VSTDCCC010EC

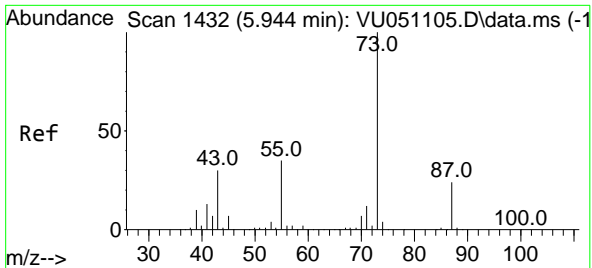
Tgt Ion: 45 Resp: 434001
 Ion Ratio Lower Upper
 45 100
 43 59.1 23.8 71.2



#32
 Ethyl-t-butyl ether
 Concen: 9.599 ug/l
 RT: 4.507 min Scan# 985
 Delta R.T. -0.000 min
 Lab File: VU051426.D
 Acq: 14 Oct 2022 17:38

Tgt Ion: 59 Resp: 394080
 Ion Ratio Lower Upper
 59 100
 87 42.9 32.5 48.7

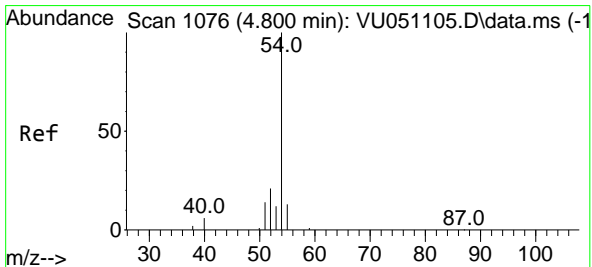
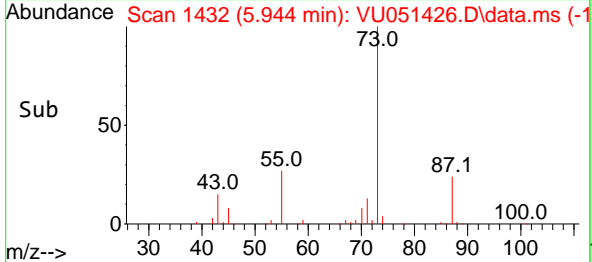
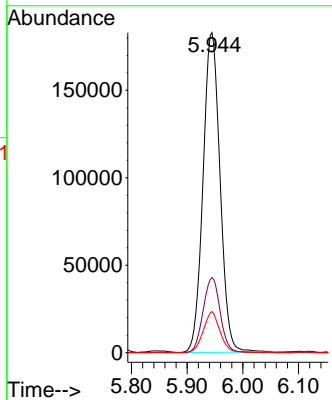
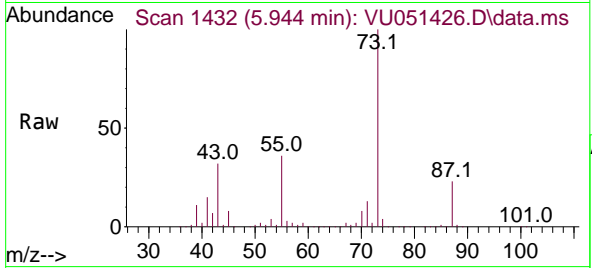




#33
 Tert-Amyl methyl ether
 Concen: 10.592 ug/l
 RT: 5.944 min Scan# 1432
 Delta R.T. -0.000 min
 Lab File: VU051426.D
 Acq: 14 Oct 2022 17:38

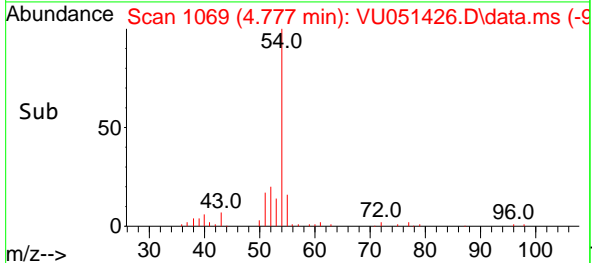
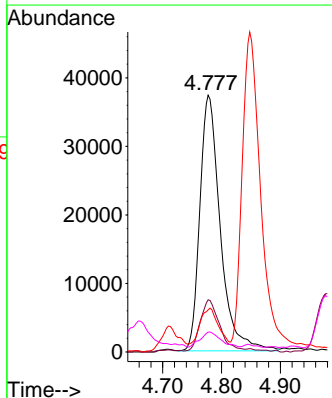
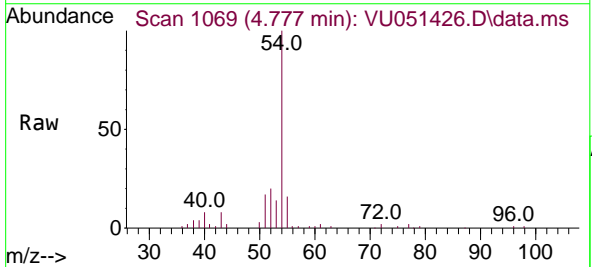
Instrument : MSVOA_U
 ClientSampleId : VSTDCCC010EC

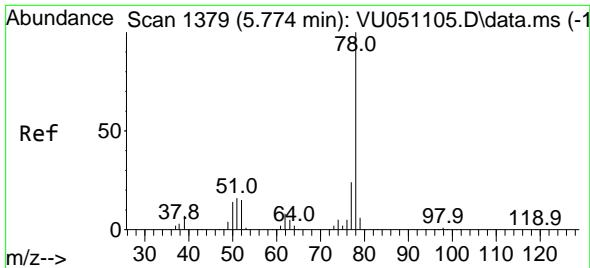
Tgt Ion: 73 Resp: 388432
 Ion Ratio Lower Upper
 73 100
 87 23.6 19.7 29.5
 71 12.4 9.0 13.4



#34
 Propionitrile
 Concen: 59.732 ug/l
 RT: 4.777 min Scan# 1069
 Delta R.T. -0.023 min
 Lab File: VU051426.D
 Acq: 14 Oct 2022 17:38

Tgt Ion: 54 Resp: 90023
 Ion Ratio Lower Upper
 54 100
 52 18.8 15.0 22.6
 55 15.0 12.6 19.0
 40 5.8 4.2 6.4

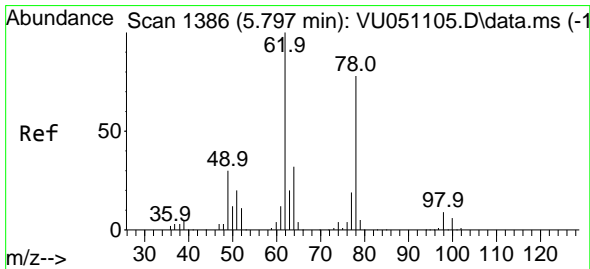
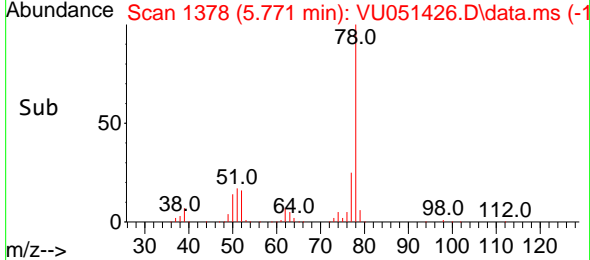
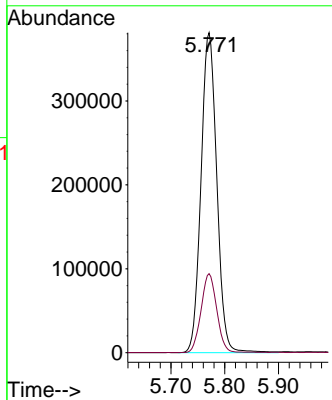
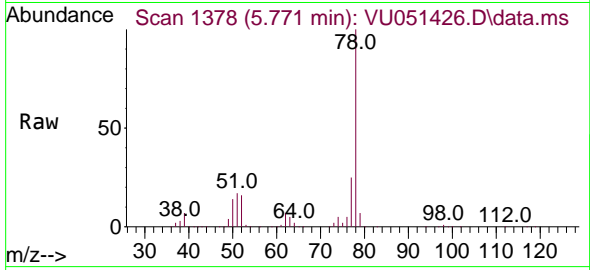




#35
Benzene
Concen: 10.224 ug/l
RT: 5.771 min Scan# 1378
Delta R.T. -0.003 min
Lab File: VU051426.D
Acq: 14 Oct 2022 17:38

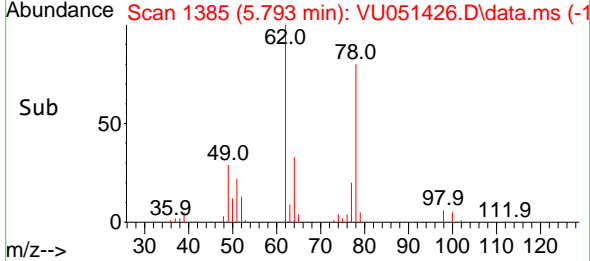
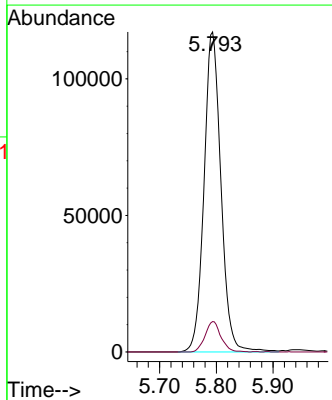
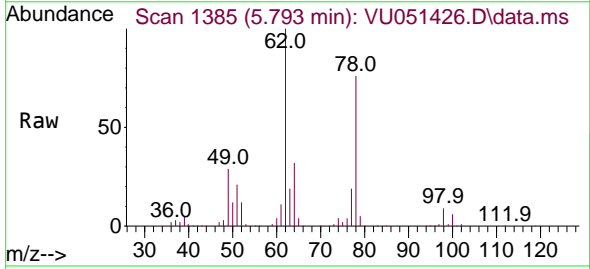
Instrument : MSVOA_U
ClientSampleId : VSTDCCC010EC

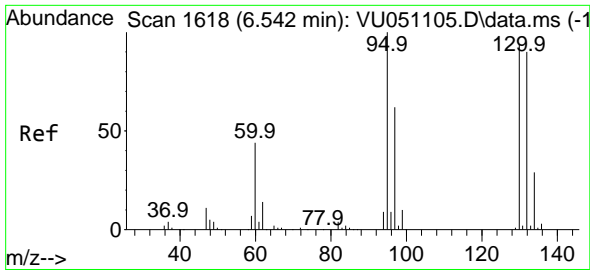
Tgt Ion: 78 Resp: 776661
Ion Ratio Lower Upper
78 100
77 24.6 18.6 28.0



#36
1,2-Dichloroethane
Concen: 10.190 ug/l
RT: 5.793 min Scan# 1385
Delta R.T. -0.003 min
Lab File: VU051426.D
Acq: 14 Oct 2022 17:38

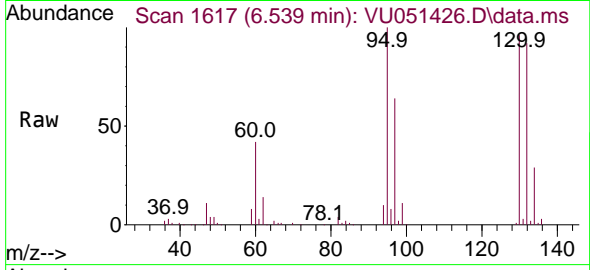
Tgt Ion: 62 Resp: 242968
Ion Ratio Lower Upper
62 100
98 8.9 7.4 11.0



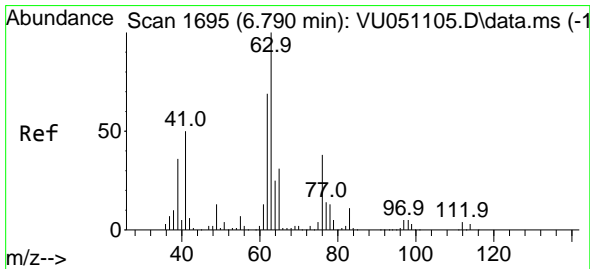
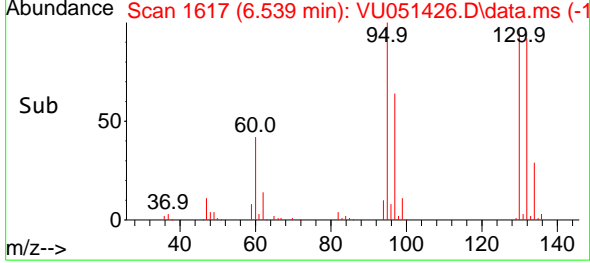
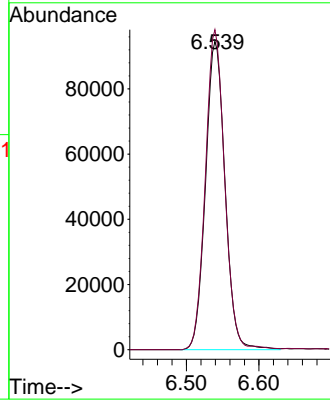


#37
 Trichloroethene
 Concen: 9.566 ug/l
 RT: 6.539 min Scan# 1617
 Delta R.T. -0.003 min
 Lab File: VU051426.D
 Acq: 14 Oct 2022 17:38

Instrument : MSVOA_U
 ClientSampleId : VSTDCCC010EC

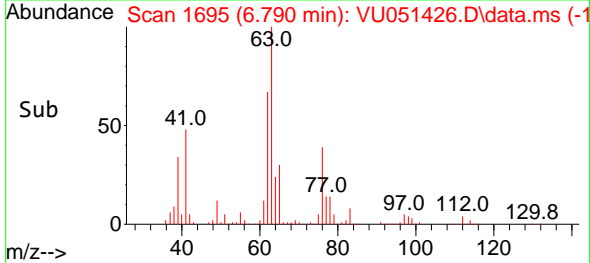
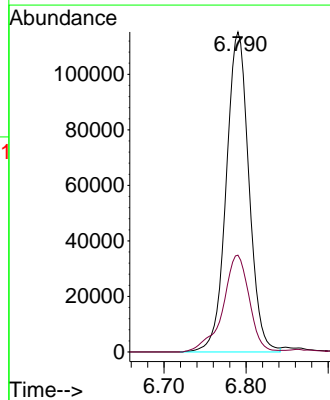
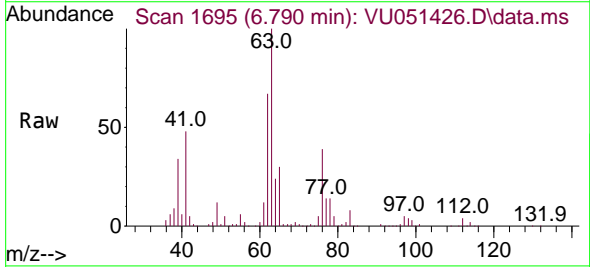


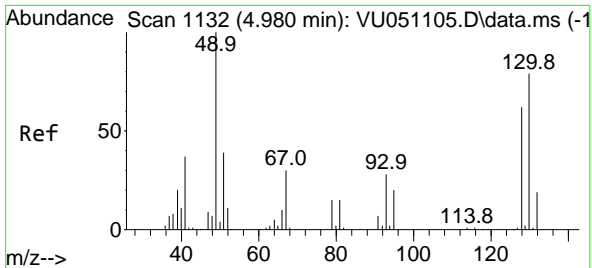
Tgt Ion:130 Resp: 176839
 Ion Ratio Lower Upper
 130 100
 95 103.8 83.8 125.8



#38
 1,2-Dichloropropane
 Concen: 10.689 ug/l
 RT: 6.790 min Scan# 1695
 Delta R.T. -0.000 min
 Lab File: VU051426.D
 Acq: 14 Oct 2022 17:38

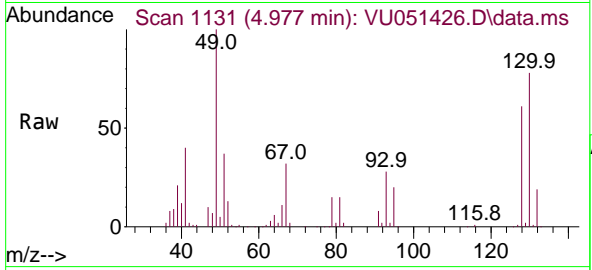
Tgt Ion: 63 Resp: 221674
 Ion Ratio Lower Upper
 63 100
 65 30.2 25.0 37.4





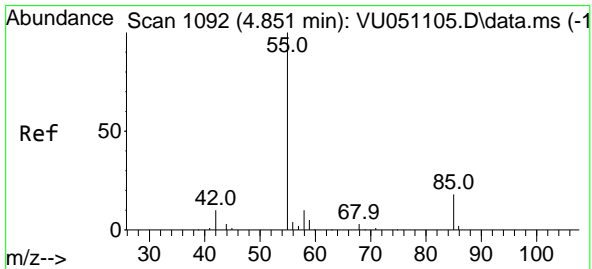
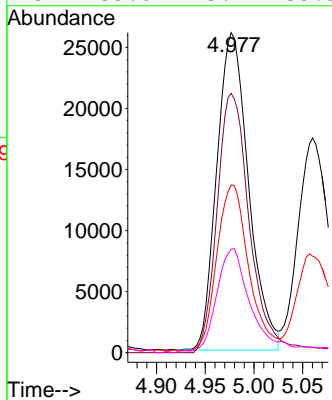
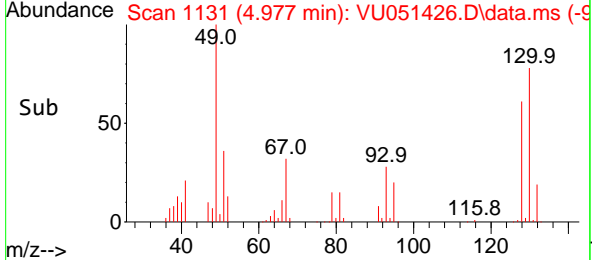
#39
 Methacrylonitrile
 Concen: 10.831 ug/l
 RT: 4.977 min Scan# 1131
 Delta R.T. -0.003 min
 Lab File: VU051426.D
 Acq: 14 Oct 2022 17:38

Instrument : MSVOA_U
 ClientSampleId : VSTDCCC010EC

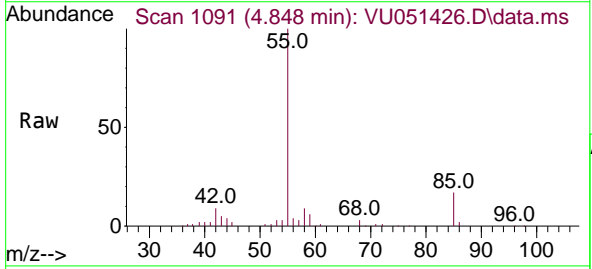


Tgt Ion: 41 Resp: 59022

Ion	Ratio	Lower	Upper
41	100		
67	84.6	59.4	89.0
39	52.1	42.2	63.2
52	35.0	23.7	35.5

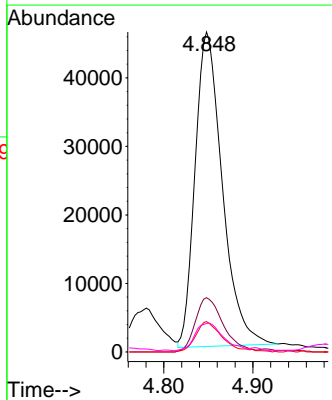
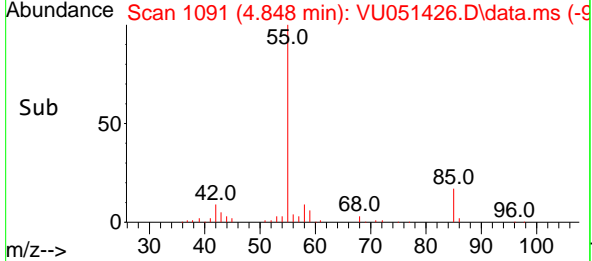


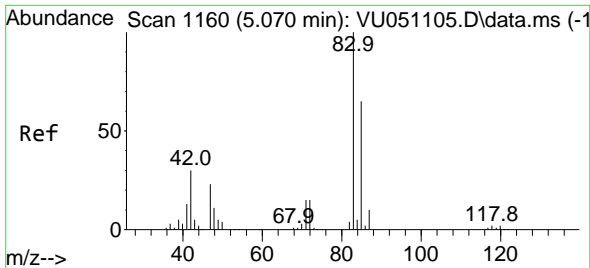
#40
 Methyl acrylate
 Concen: 10.347 ug/l
 RT: 4.848 min Scan# 1091
 Delta R.T. -0.003 min
 Lab File: VU051426.D
 Acq: 14 Oct 2022 17:38



Tgt Ion: 55 Resp: 97469

Ion	Ratio	Lower	Upper
55	100		
85	17.7	13.5	20.3
58	9.5	7.0	10.4
42	9.0	7.0	10.6



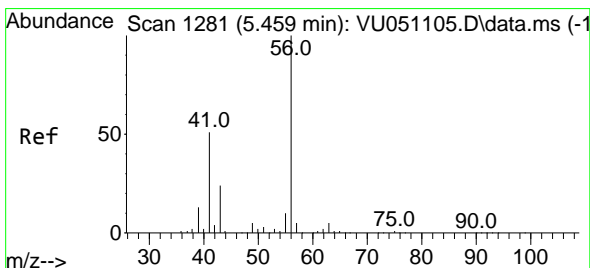
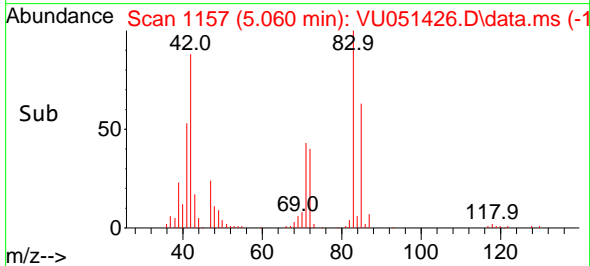
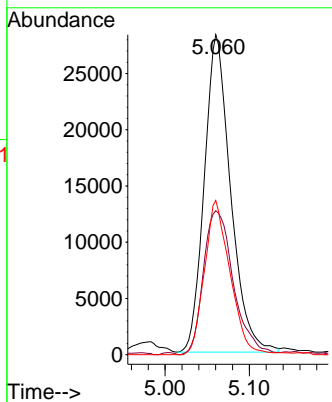
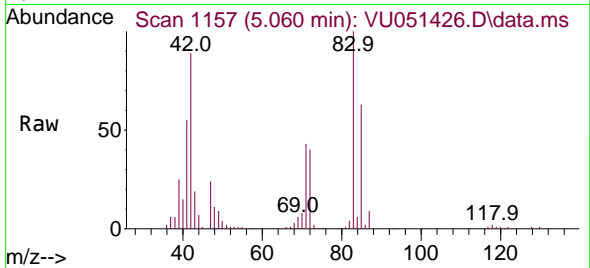


#41
 Tetrahydrofuran
 Concen: 21.222 ug/l
 RT: 5.060 min Scan# 1160
 Delta R.T. -0.010 min
 Lab File: VU051426.D
 Acq: 14 Oct 2022 17:38

Instrument : MSVOA_U
 ClientSampleId : VSTDCCC010EC

Tgt Ion: 42 Resp: 61257

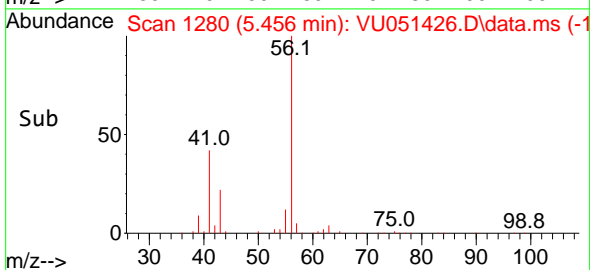
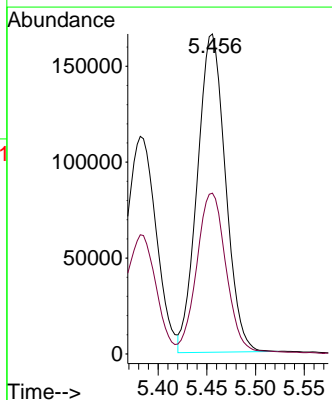
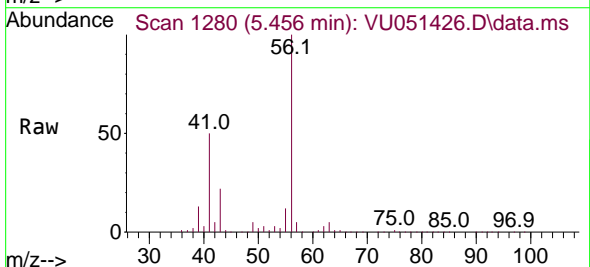
Ion	Ratio	Lower	Upper
42	100		
72	51.8	38.9	58.3
71	47.2	33.7	50.5

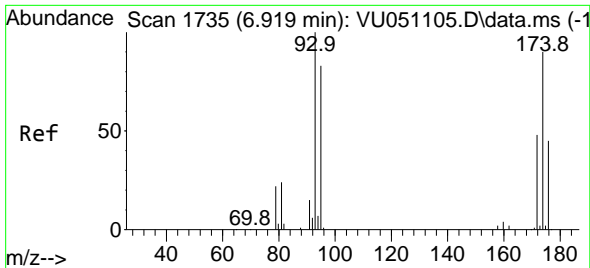


#42
 1-Chlorobutane
 Concen: 10.466 ug/l
 RT: 5.456 min Scan# 1280
 Delta R.T. -0.003 min
 Lab File: VU051426.D
 Acq: 14 Oct 2022 17:38

Tgt Ion: 56 Resp: 333116

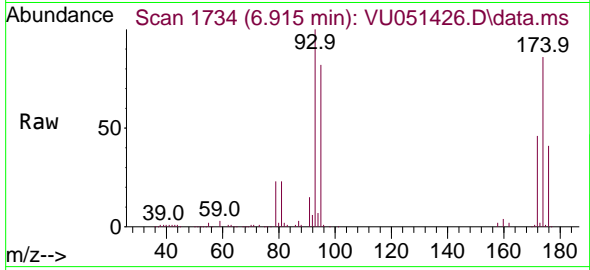
Ion	Ratio	Lower	Upper
56	100		
41	52.7	26.4	79.2



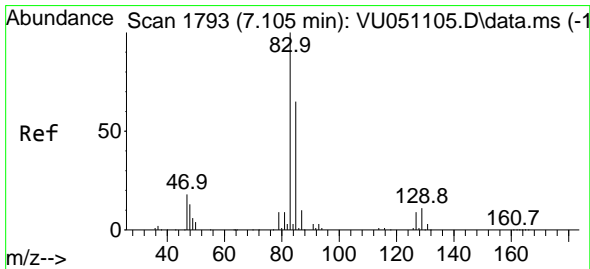
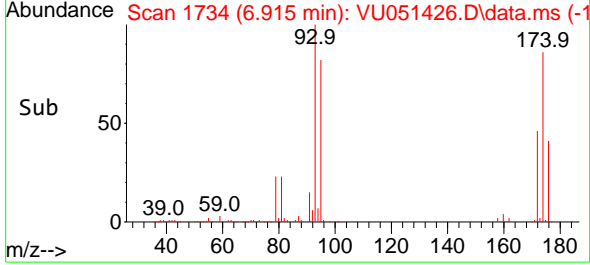
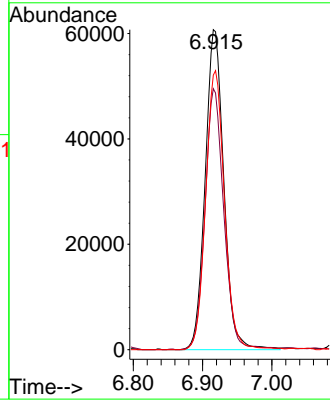


#43
 Dibromomethane
 Concen: 10.180 ug/l
 RT: 6.915 min Scan# 1734
 Delta R.T. -0.003 min
 Lab File: VU051426.D
 Acq: 14 Oct 2022 17:38

Instrument : MSVOA_U
 ClientSampleId : VSTDCCC010EC

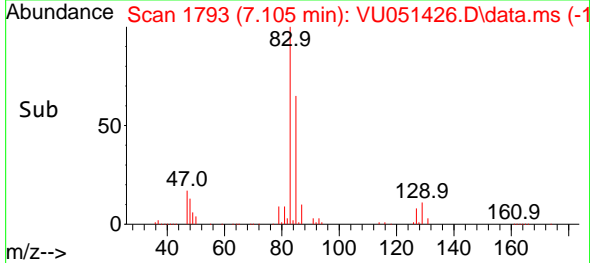
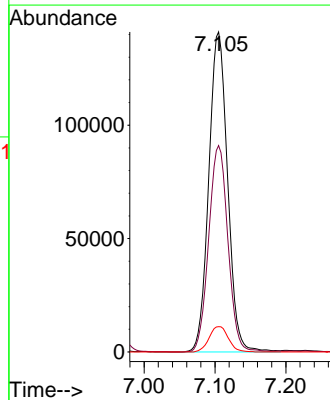
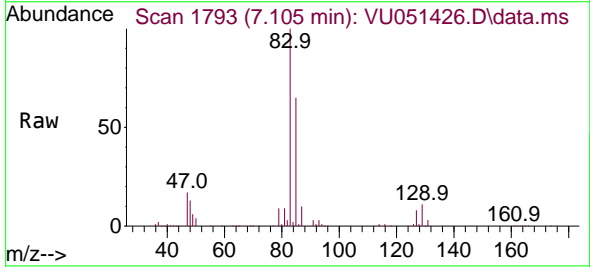


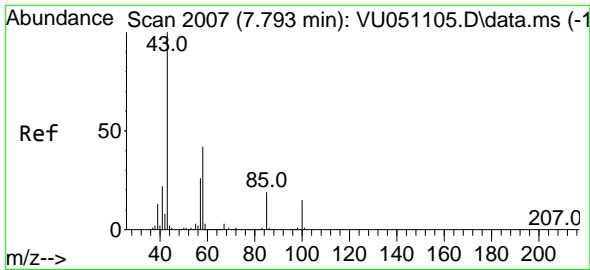
Tgt Ion: 93 Resp: 113372
 Ion Ratio Lower Upper
 93 100
 95 81.6 65.0 97.6
 174 88.2 76.3 114.5



#44
 Bromodichloromethane
 Concen: 10.018 ug/l
 RT: 7.105 min Scan# 1793
 Delta R.T. -0.000 min
 Lab File: VU051426.D
 Acq: 14 Oct 2022 17:38

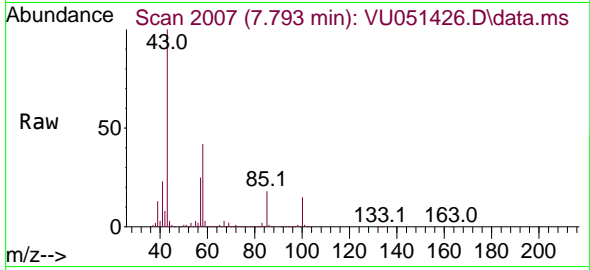
Tgt Ion: 83 Resp: 260417
 Ion Ratio Lower Upper
 83 100
 85 64.5 49.4 74.0
 127 7.9 6.6 10.0



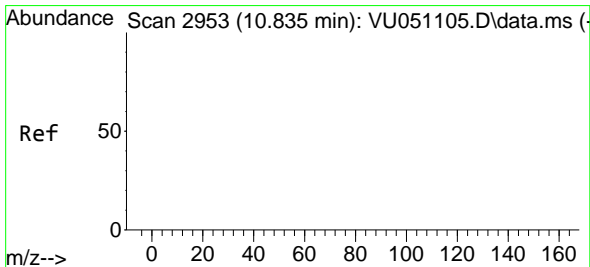
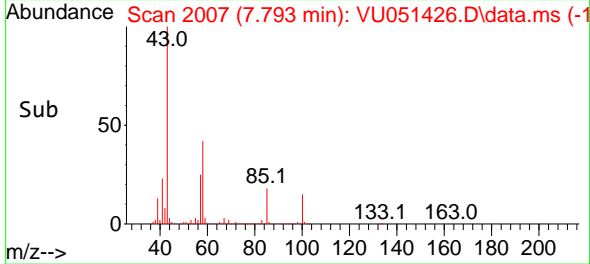
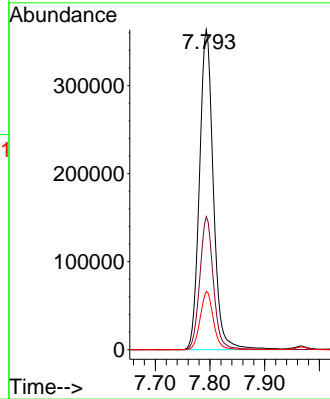


#45
 4-Methyl-2-Pentanone
 Concen: 54.657 ug/l
 RT: 7.793 min Scan# 2007
 Delta R.T. -0.000 min
 Lab File: VU051426.D
 Acq: 14 Oct 2022 17:38

Instrument : MSVOA_U
 ClientSampleId : VSTDCCC010EC

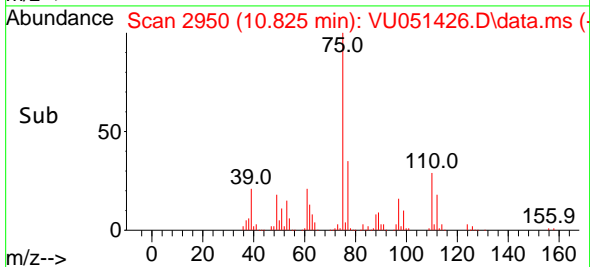
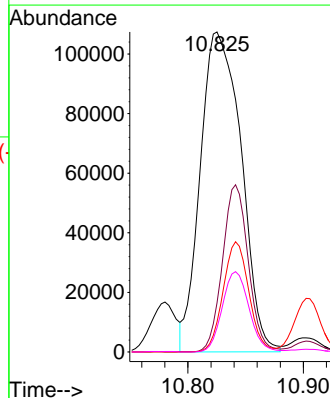
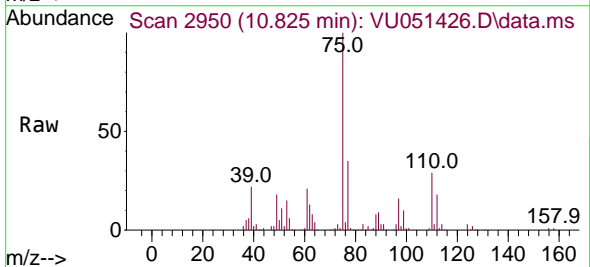


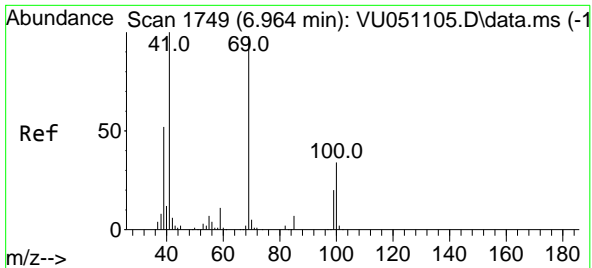
Tgt Ion: 43 Resp: 639740
 Ion Ratio Lower Upper
 43 100
 58 40.8 20.3 61.0
 85 17.3 14.6 21.8



#46
 t-1,4-Dichloro-2-butene
 Concen: 68.215 ug/l
 RT: 10.825 min Scan# 2950
 Delta R.T. -0.010 min
 Lab File: VU051426.D
 Acq: 14 Oct 2022 17:38

Tgt Ion: 75 Resp: 263379
 Ion Ratio Lower Upper
 75 100
 53 32.9 64.4 96.6#
 89 21.8 44.2 66.2#
 88 16.5 32.8 49.2#



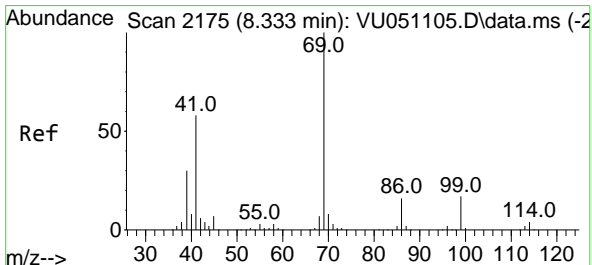
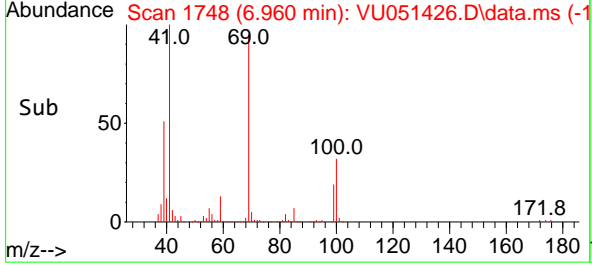
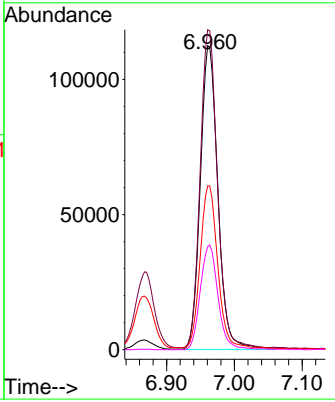
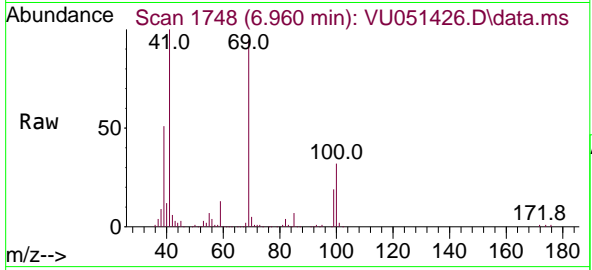


#47
 Methyl methacrylate
 Concen: 22.748 ug/l
 RT: 6.960 min Scan# 1748
 Delta R.T. -0.003 min
 Lab File: VU051426.D
 Acq: 14 Oct 2022 17:38

Instrument : MSVOA_U
 ClientSampleId : VSTDCCC010EC

Tgt Ion: 69 Resp: 202679

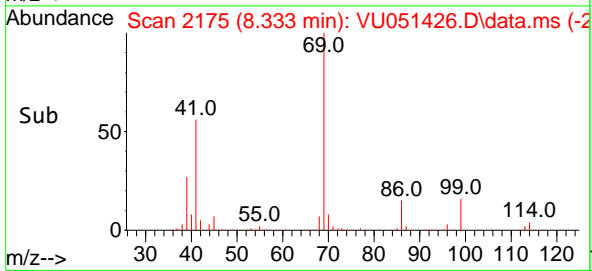
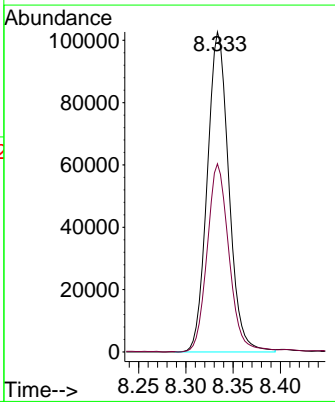
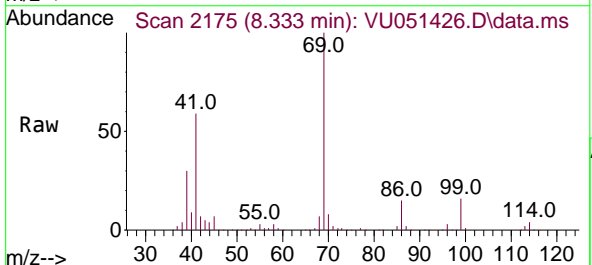
Ion	Ratio	Lower	Upper
69	100		
41	102.3	0.0	225.4
39	52.7	45.8	68.8
100	34.7	28.8	43.2

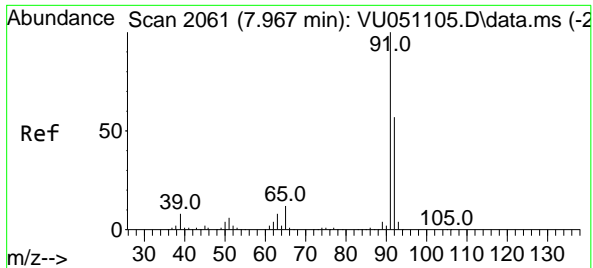


#48
 Ethyl methacrylate
 Concen: 10.916 ug/l
 RT: 8.333 min Scan# 2175
 Delta R.T. -0.000 min
 Lab File: VU051426.D
 Acq: 14 Oct 2022 17:38

Tgt Ion: 69 Resp: 163064

Ion	Ratio	Lower	Upper
69	100		
41	59.5	32.3	96.9

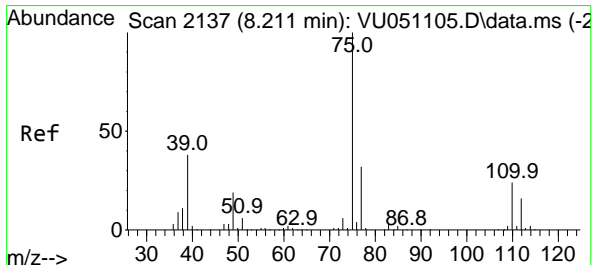
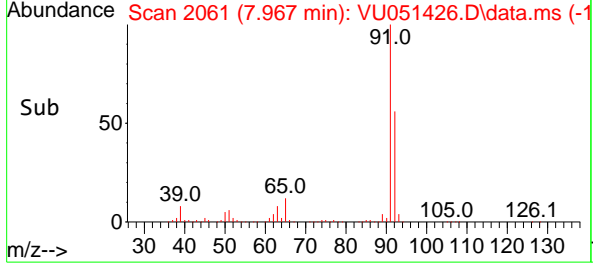
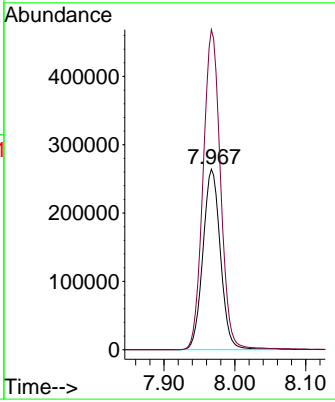
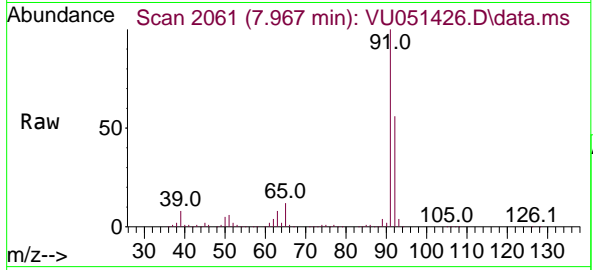




#49
 Toluene
 Concen: 10.974 ug/l
 RT: 7.967 min Scan# 2061
 Delta R.T. -0.000 min
 Lab File: VU051426.D
 Acq: 14 Oct 2022 17:38

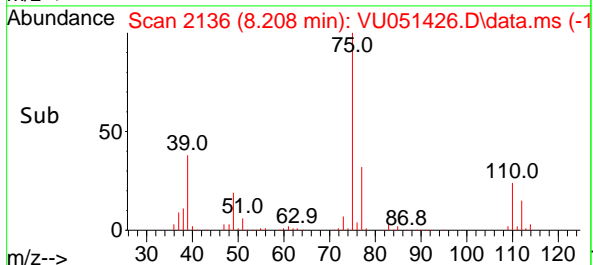
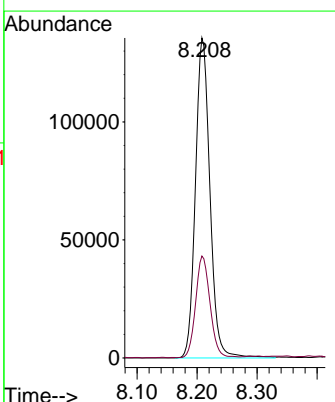
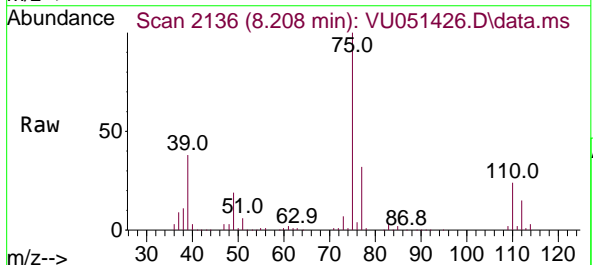
Instrument : MSVOA_U
 ClientSampleId : VSTDCCC010EC

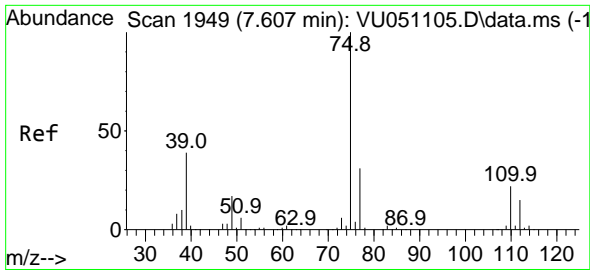
Tgt Ion: 92 Resp: 452662
 Ion Ratio Lower Upper
 92 100
 91 176.4 138.6 207.8



#50
 t-1,3-Dichloropropene
 Concen: 10.931 ug/l
 RT: 8.208 min Scan# 2136
 Delta R.T. -0.003 min
 Lab File: VU051426.D
 Acq: 14 Oct 2022 17:38

Tgt Ion: 75 Resp: 228471
 Ion Ratio Lower Upper
 75 100
 77 31.7 24.7 37.1



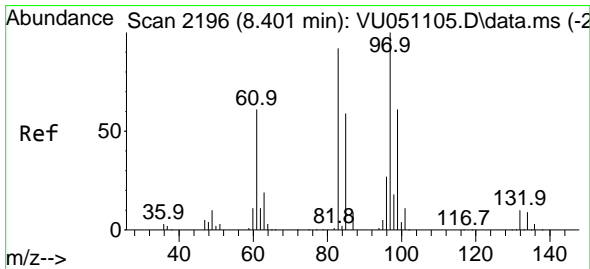
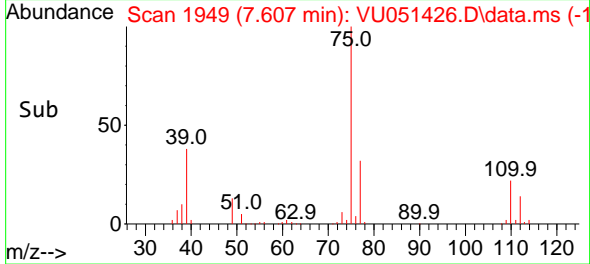
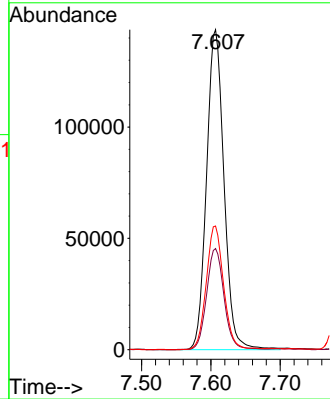
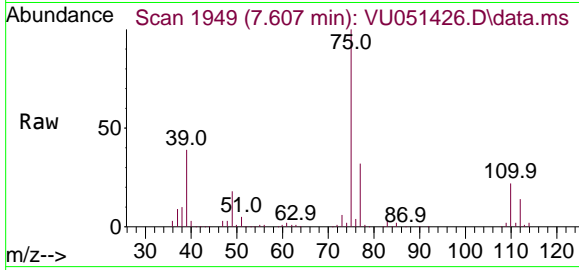


#51
 cis-1,3-Dichloropropene
 Concen: 10.297 ug/l
 RT: 7.607 min Scan# 1949
 Delta R.T. -0.000 min
 Lab File: VU051426.D
 Acq: 14 Oct 2022 17:38

Instrument : MSVOA_U
 ClientSampleId : VSTDCCC010EC

Tgt Ion: 75 Resp: 250803

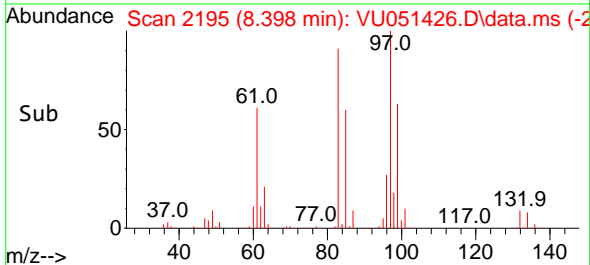
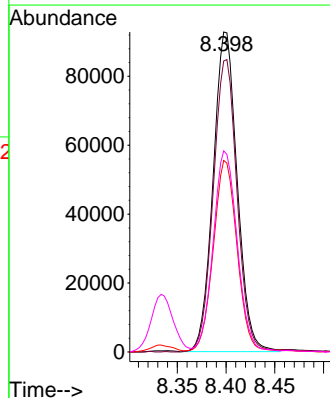
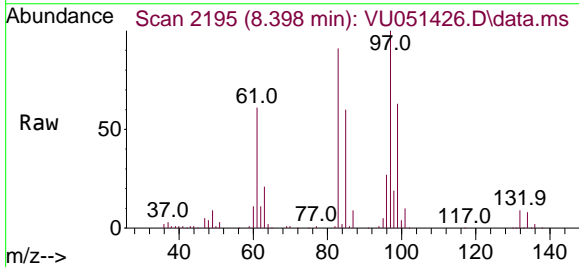
Ion	Ratio	Lower	Upper
75	100		
77	31.5	25.4	38.0
39	38.7	35.1	52.7

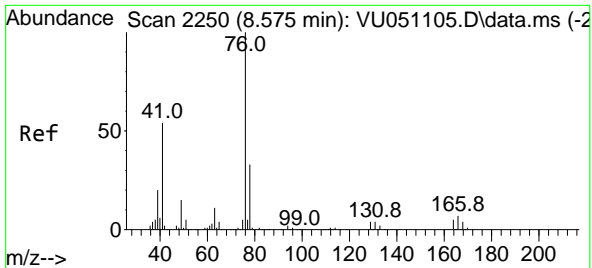


#52
 1,1,2-Trichloroethane
 Concen: 9.845 ug/l
 RT: 8.398 min Scan# 2195
 Delta R.T. -0.003 min
 Lab File: VU051426.D
 Acq: 14 Oct 2022 17:38

Tgt Ion: 97 Resp: 159050

Ion	Ratio	Lower	Upper
97	100		
83	91.1	70.6	106.0
85	59.4	46.2	69.4
99	62.6	50.0	75.0

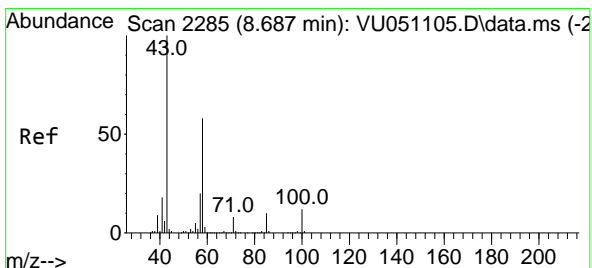
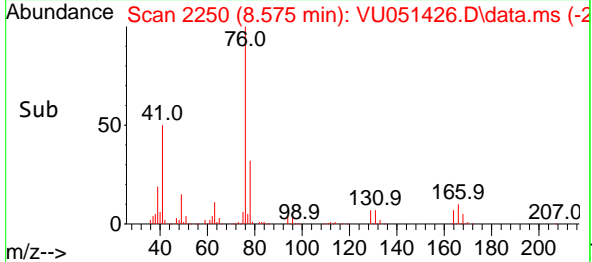
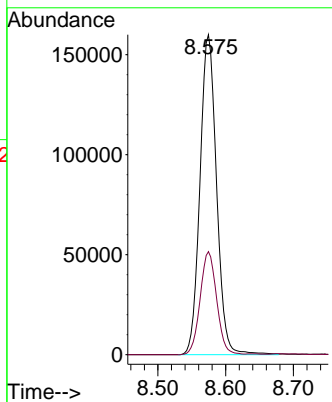
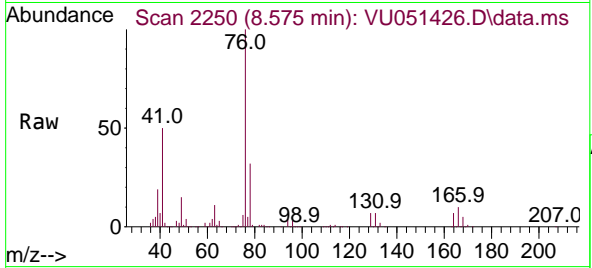




#53
 1,3-Dichloropropane
 Concen: 10.614 ug/l
 RT: 8.575 min Scan# 21
 Delta R.T. -0.000 min
 Lab File: VU051426.D
 Acq: 14 Oct 2022 17:38

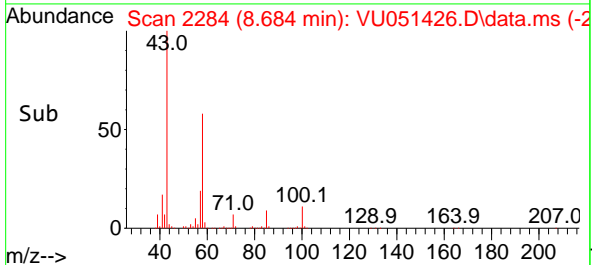
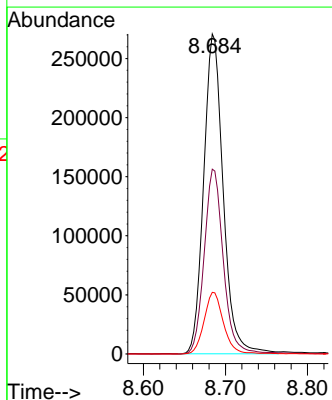
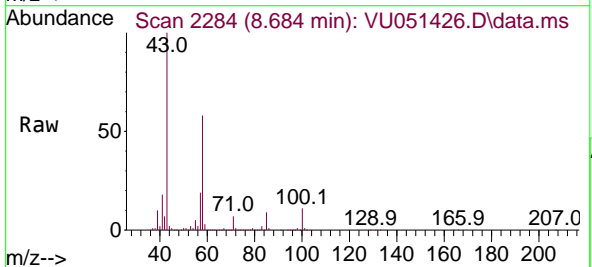
Instrument : MSVOA_U
 ClientSampleId : VSTDC010EC

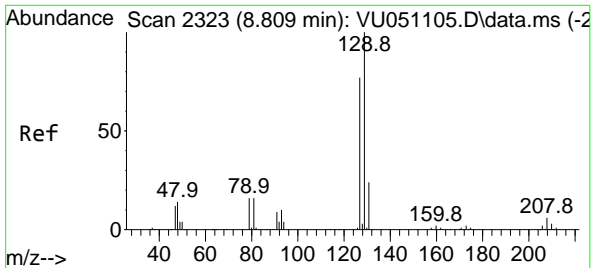
Tgt Ion: 76 Resp: 272275
 Ion Ratio Lower Upper
 76 100
 78 32.0 26.0 39.0



#54
 2-Hexanone
 Concen: 53.933 ug/l
 RT: 8.684 min Scan# 2284
 Delta R.T. -0.003 min
 Lab File: VU051426.D
 Acq: 14 Oct 2022 17:38

Tgt Ion: 43 Resp: 446771
 Ion Ratio Lower Upper
 43 100
 58 57.1 37.1 77.1
 57 19.2 0.0 39.5

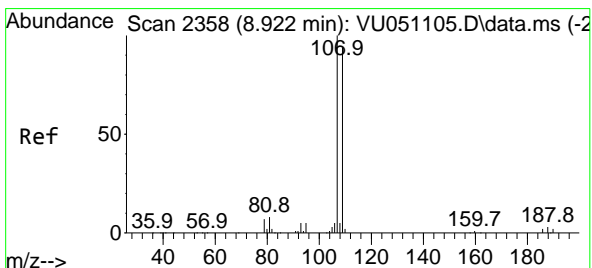
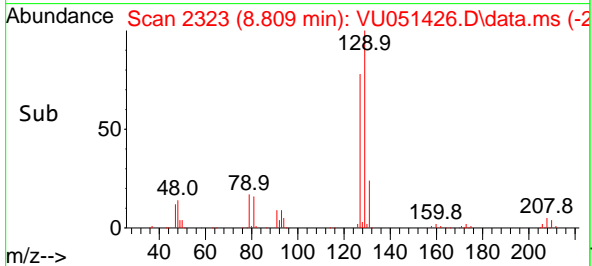
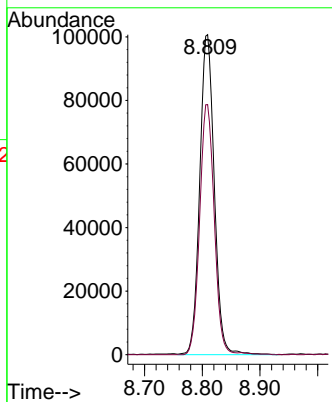
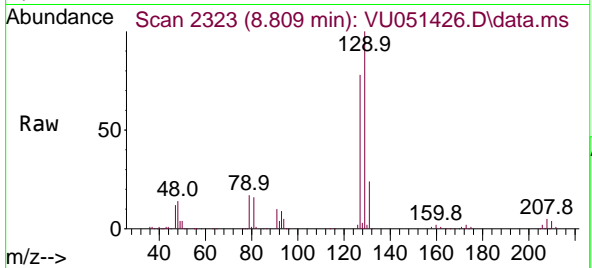




#55
 Dibromochloromethane
 Concen: 10.000 ug/l
 RT: 8.809 min Scan# 2323
 Delta R.T. -0.000 min
 Lab File: VU051426.D
 Acq: 14 Oct 2022 17:38

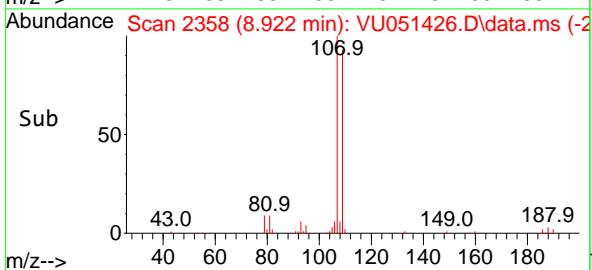
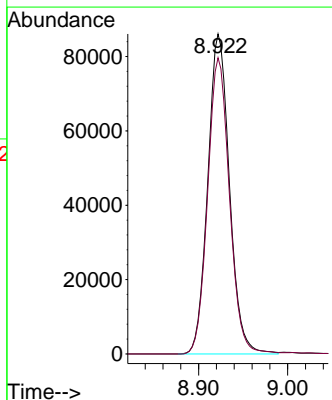
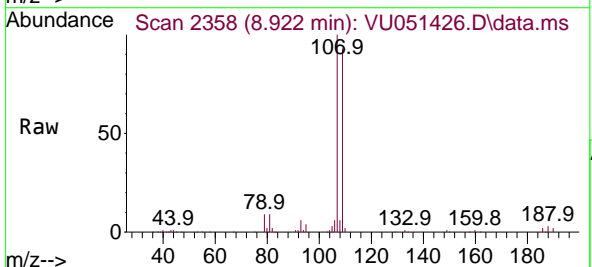
Instrument : MSVOA_U
 ClientSampleId : VSTDCCC010EC

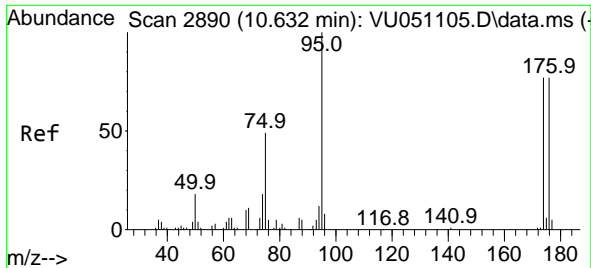
Tgt Ion:129 Resp: 176029
 Ion Ratio Lower Upper
 129 100
 127 78.2 61.2 91.8



#56
 1,2-Dibromoethane
 Concen: 10.054 ug/l
 RT: 8.922 min Scan# 2358
 Delta R.T. -0.000 min
 Lab File: VU051426.D
 Acq: 14 Oct 2022 17:38

Tgt Ion:107 Resp: 145412
 Ion Ratio Lower Upper
 107 100
 109 93.2 0.0 187.2



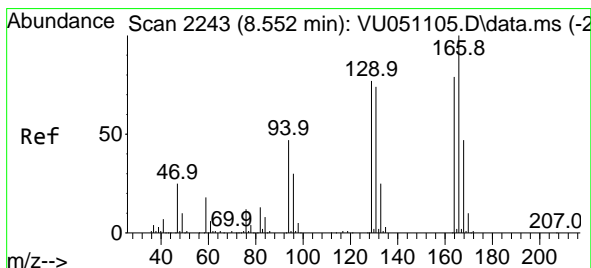
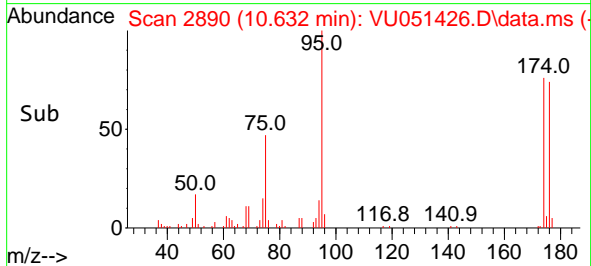
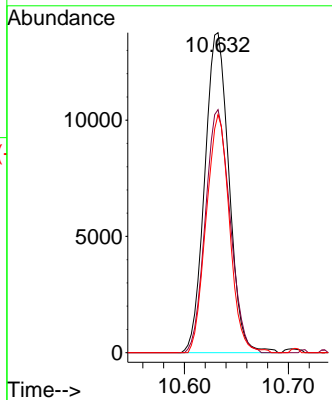
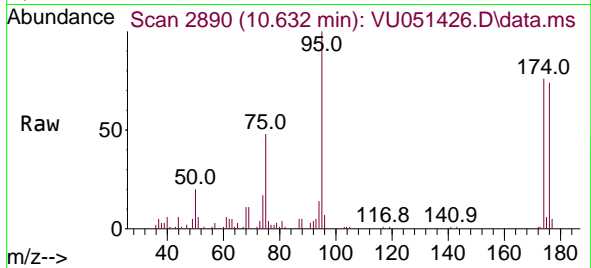


#57
 4-Bromofluorobenzene
 Concen: 1.079 ug/l
 RT: 10.632 min Scan# 2890
 Delta R.T. -0.000 min
 Lab File: VU051426.D
 Acq: 14 Oct 2022 17:38

Instrument : MSVOA_U
 ClientSampleId : VSTDCCC010EC

Tgt Ion: 95 Resp: 22279

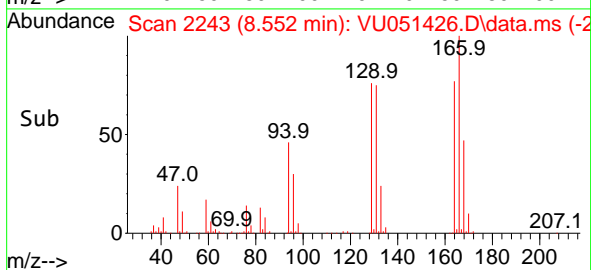
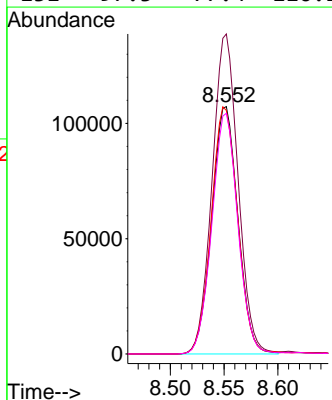
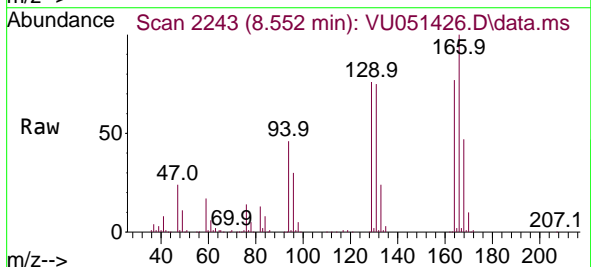
Ion	Ratio	Lower	Upper
95	100		
174	77.3	62.4	93.6
176	71.5	56.2	84.2

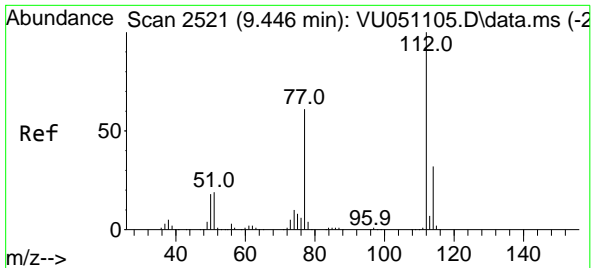


#58
 Tetrachloroethene
 Concen: 9.738 ug/l
 RT: 8.552 min Scan# 2243
 Delta R.T. -0.000 min
 Lab File: VU051426.D
 Acq: 14 Oct 2022 17:38

Tgt Ion: 164 Resp: 182023

Ion	Ratio	Lower	Upper
164	100		
166	129.4	102.4	153.6
129	98.4	79.5	119.3
131	97.3	77.4	116.2

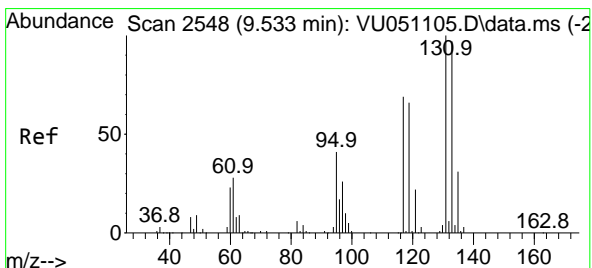
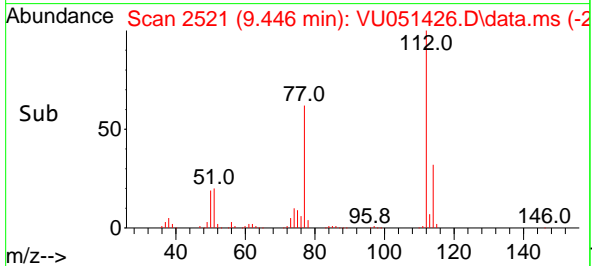
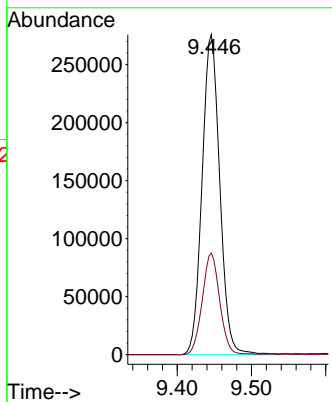
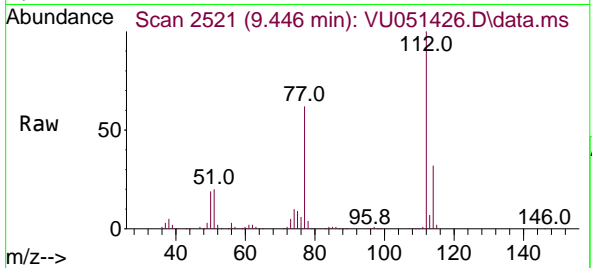




#59
 Chlorobenzene
 Concen: 10.016 ug/l
 RT: 9.446 min Scan# 2521
 Delta R.T. -0.000 min
 Lab File: VU051426.D
 Acq: 14 Oct 2022 17:38

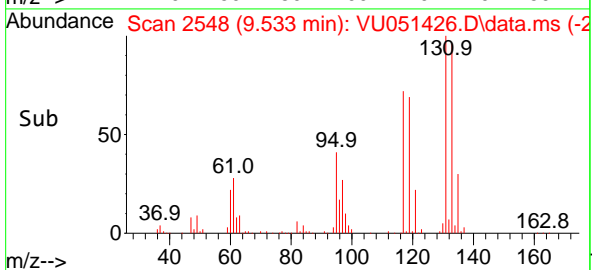
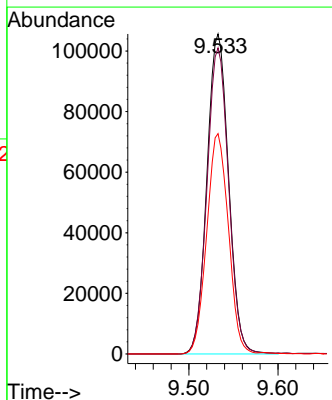
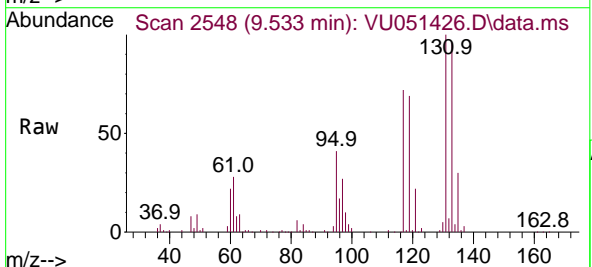
Instrument : MSVOA_U
 ClientSampleId : VSTDCCC010EC

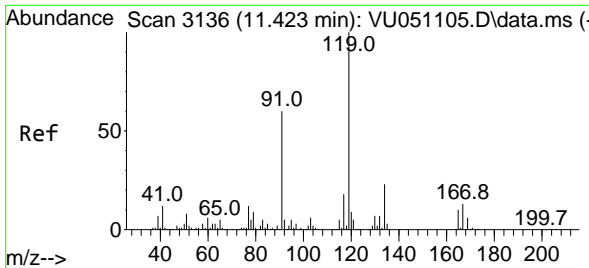
Tgt Ion:112 Resp: 455587
 Ion Ratio Lower Upper
 112 100
 114 31.8 24.9 37.3



#60
 1,1,1,2-Tetrachloroethane
 Concen: 9.974 ug/l
 RT: 9.533 min Scan# 2548
 Delta R.T. -0.000 min
 Lab File: VU051426.D
 Acq: 14 Oct 2022 17:38

Tgt Ion:131 Resp: 177957
 Ion Ratio Lower Upper
 131 100
 133 95.9 78.3 117.5
 119 69.0 53.2 79.8

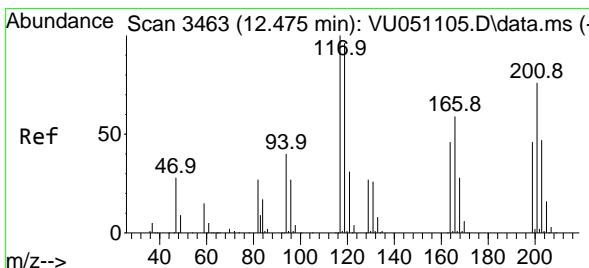
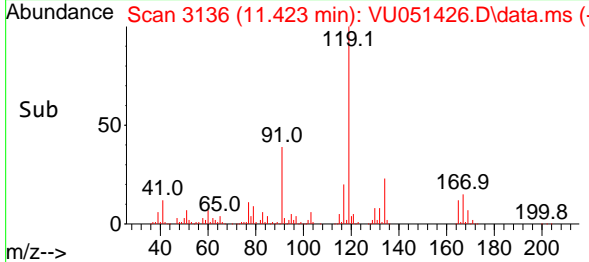
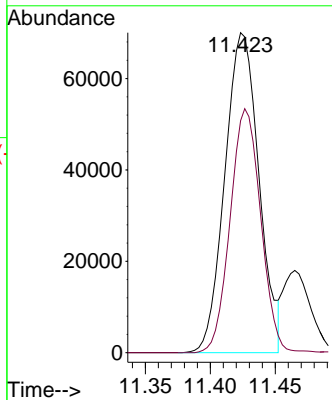
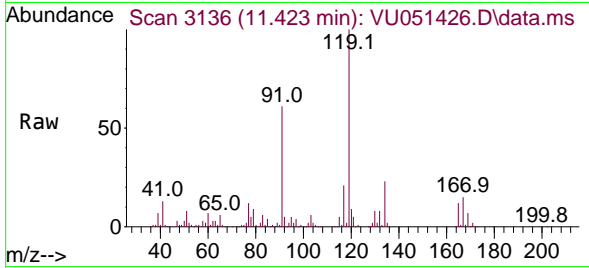




#61
 Pentachloroethane
 Concen: 10.369 ug/l
 RT: 11.423 min Scan# 3136
 Delta R.T. -0.000 min
 Lab File: VU051426.D
 Acq: 14 Oct 2022 17:38

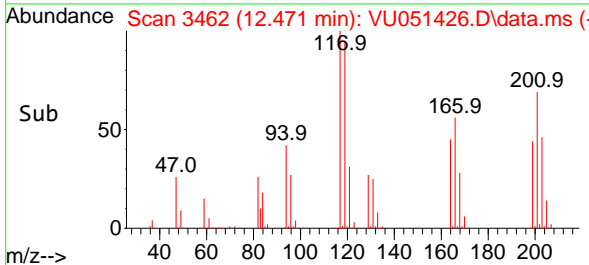
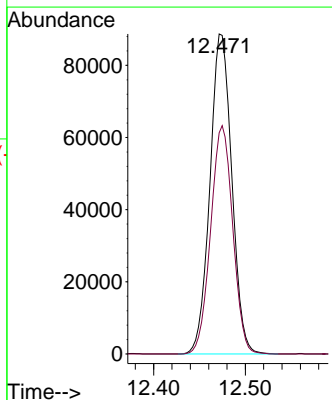
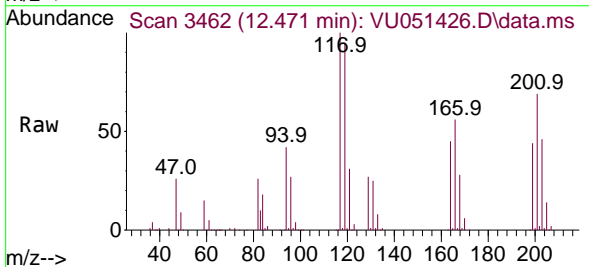
Instrument : MSVOA_U
 ClientSampleId : VSTDC0010EC

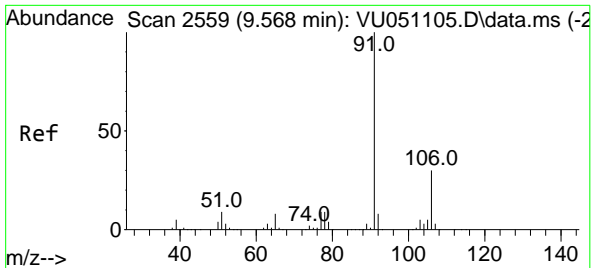
Tgt Ion:117 Resp: 128029
 Ion Ratio Lower Upper
 117 100
 167 68.4 66.2 99.4



#62
 Hexachloroethane
 Concen: 10.315 ug/l
 RT: 12.471 min Scan# 3462
 Delta R.T. -0.003 min
 Lab File: VU051426.D
 Acq: 14 Oct 2022 17:38

Tgt Ion:117 Resp: 146984
 Ion Ratio Lower Upper
 117 100
 201 72.0 61.0 91.4

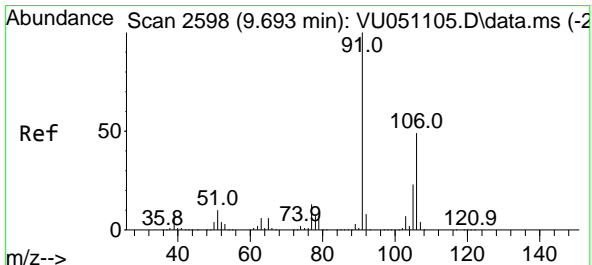
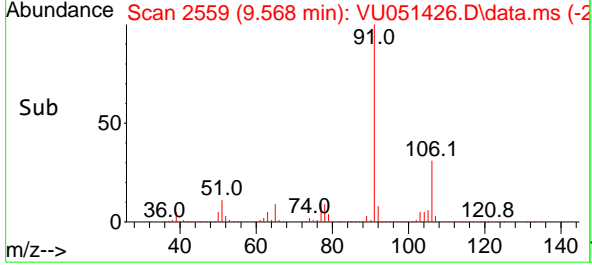
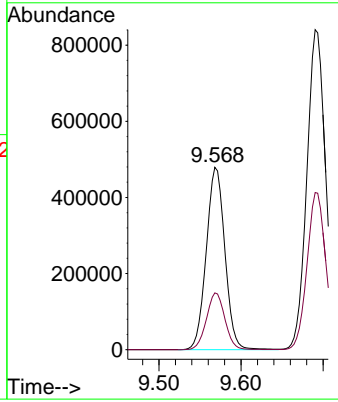
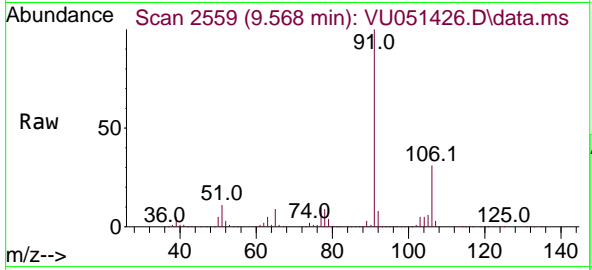




#63
 Ethyl Benzene
 Concen: 10.821 ug/l
 RT: 9.568 min Scan# 2559
 Delta R.T. -0.000 min
 Lab File: VU051426.D
 Acq: 14 Oct 2022 17:38

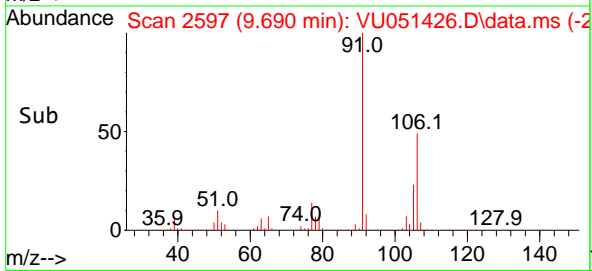
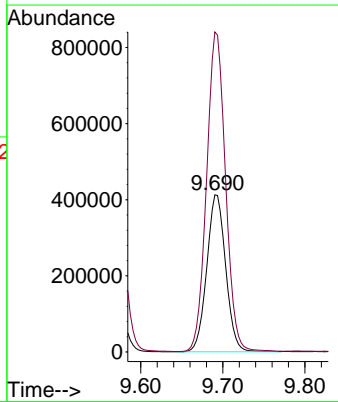
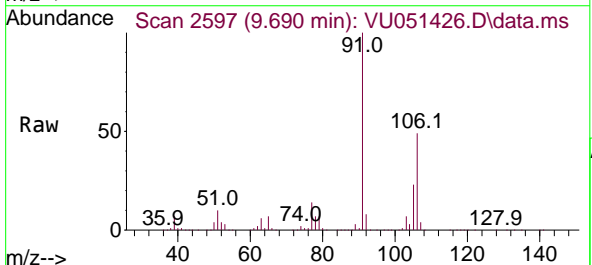
Instrument : MSVOA_U
 ClientSampleId : VSTDCCC010EC

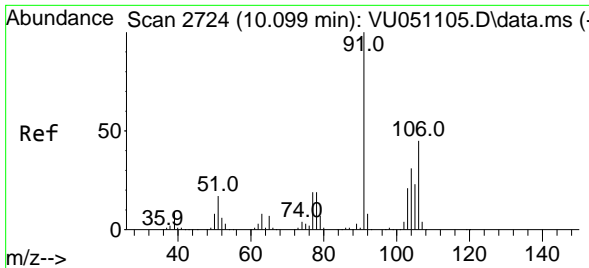
Tgt Ion: 91 Resp: 755772
 Ion Ratio Lower Upper
 91 100
 106 31.2 24.4 36.6



#64
 m/p-Xylenes
 Concen: 19.678 ug/l
 RT: 9.690 min Scan# 2597
 Delta R.T. -0.003 min
 Lab File: VU051426.D
 Acq: 14 Oct 2022 17:38

Tgt Ion: 106 Resp: 660999
 Ion Ratio Lower Upper
 106 100
 91 204.3 167.8 251.6

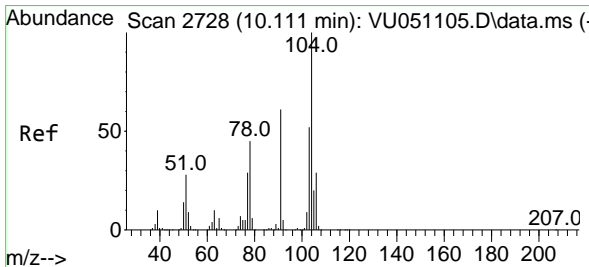
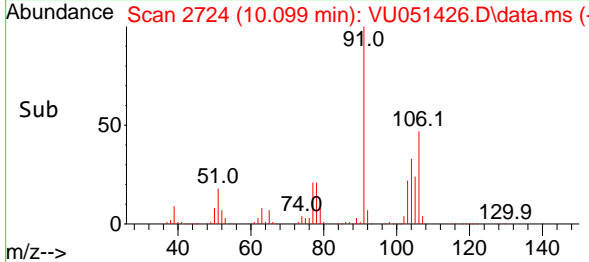
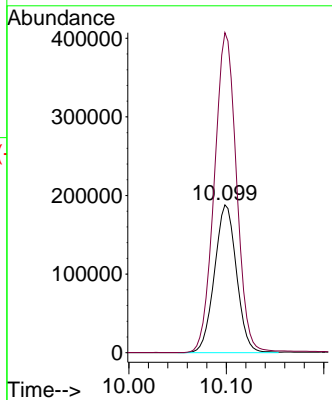
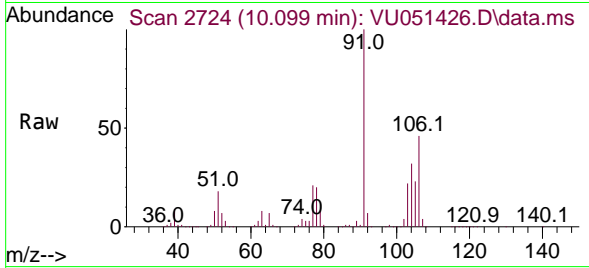




#65
 o-Xylene
 Concen: 11.045 ug/l
 RT: 10.099 min Scan# 2724
 Delta R.T. -0.000 min
 Lab File: VU051426.D
 Acq: 14 Oct 2022 17:38

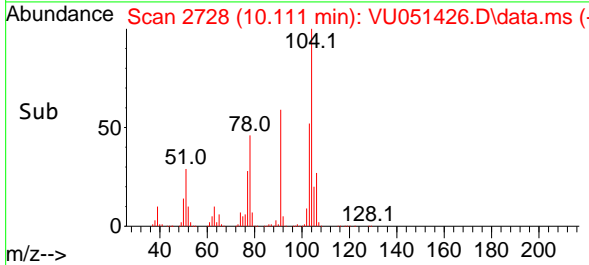
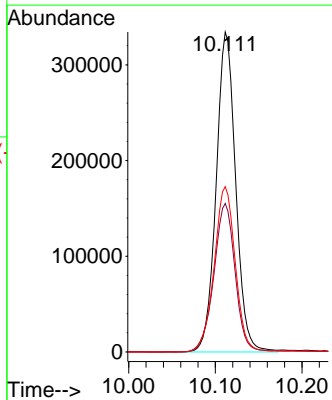
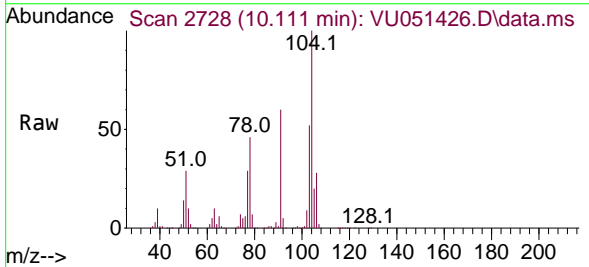
Instrument : MSVOA_U
 ClientSampleId : VSTDCCC010EC

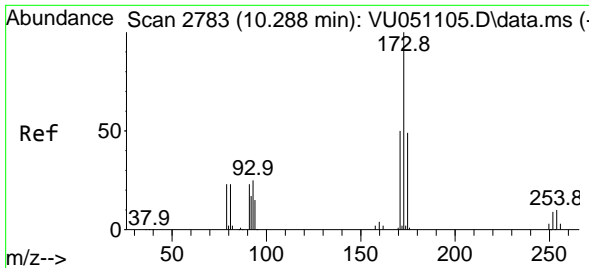
Tgt Ion:106 Resp: 295682
 Ion Ratio Lower Upper
 106 100
 91 219.4 111.1 333.2



#66
 Styrene
 Concen: 9.619 ug/l
 RT: 10.111 min Scan# 2728
 Delta R.T. 0.000 min
 Lab File: VU051426.D
 Acq: 14 Oct 2022 17:38

Tgt Ion:104 Resp: 523882
 Ion Ratio Lower Upper
 104 100
 78 50.6 42.1 63.1
 103 56.1 44.5 66.7

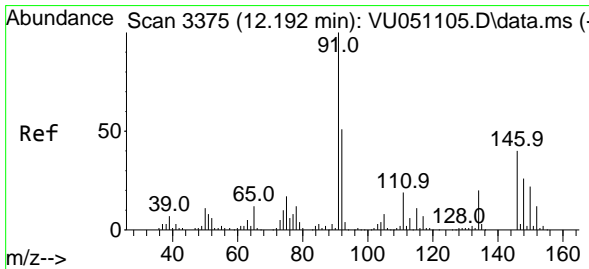
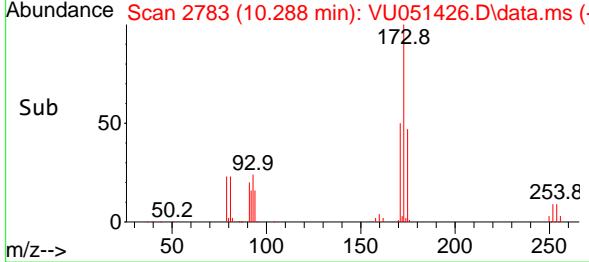
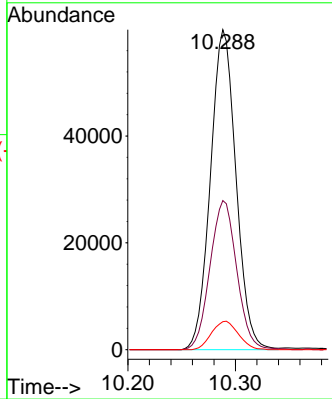
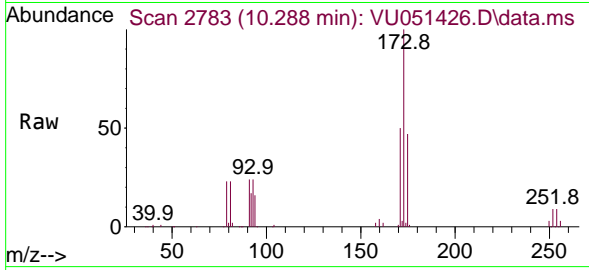




#67
 Bromoform
 Concen: 9.738 ug/l
 RT: 10.288 min Scan# 21
 Delta R.T. -0.000 min
 Lab File: VU051426.D
 Acq: 14 Oct 2022 17:38

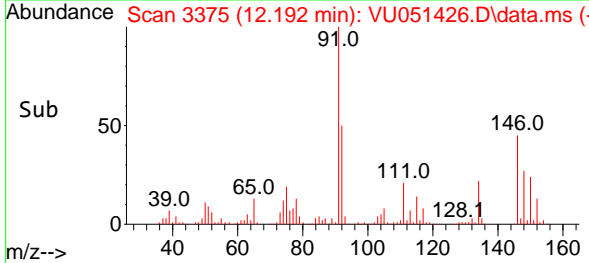
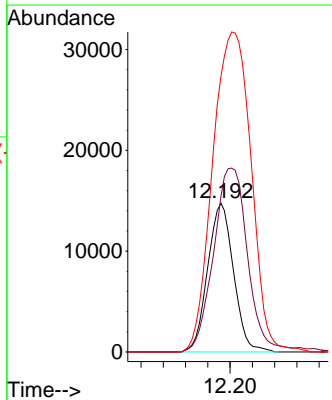
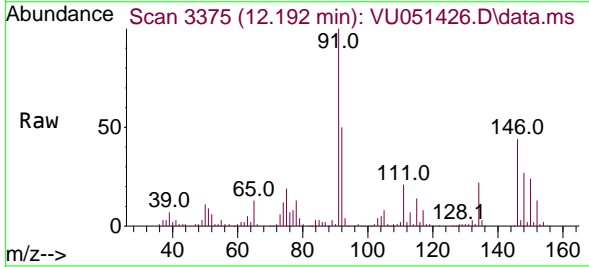
Instrument : MSVOA_U
 ClientSampleId : VSTDC010EC

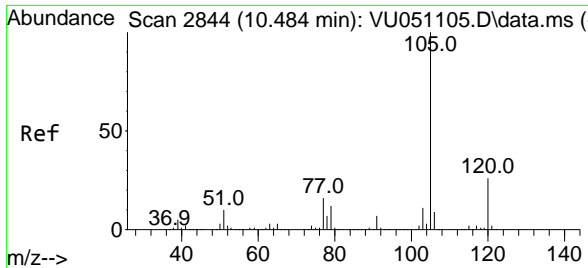
Tgt Ion	Resp	Lower	Upper
173	100		
175	48.6	38.4	57.6
254	9.3	7.7	11.5



#68
 1,2-Dichlorobenzene-d4
 Concen: 1.037 ug/l
 RT: 12.192 min Scan# 3375
 Delta R.T. -0.000 min
 Lab File: VU051426.D
 Acq: 14 Oct 2022 17:38

Tgt Ion	Resp	Lower	Upper
152	100		
115	162.1	0.0	254.6
150	319.7	0.0	623.6

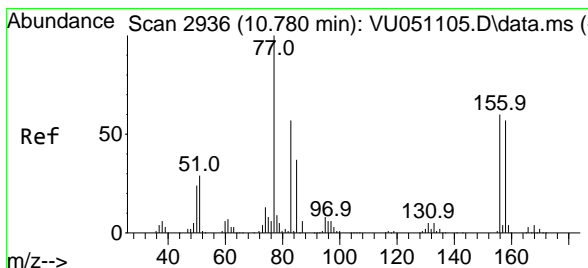
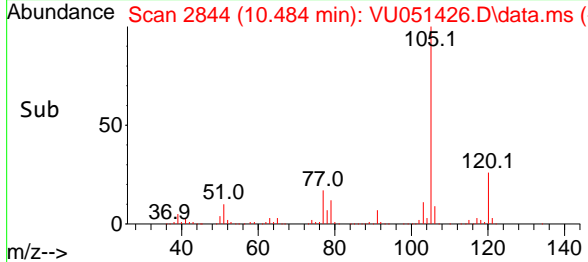
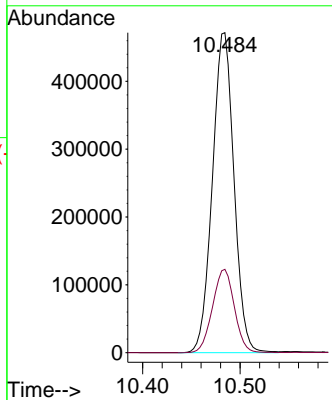
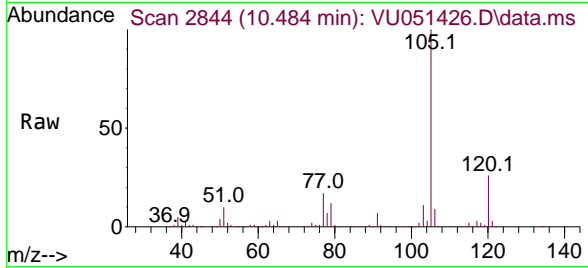




#69
 Isopropylbenzene
 Concen: 9.024 ug/l
 RT: 10.484 min Scan# 21
 Delta R.T. 0.000 min
 Lab File: VU051426.D
 Acq: 14 Oct 2022 17:38

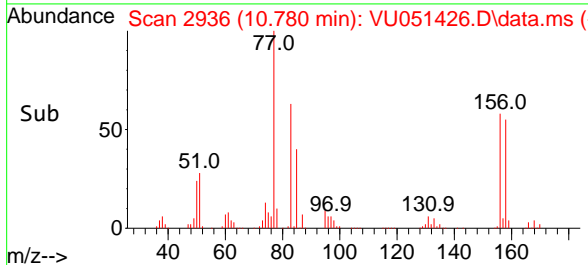
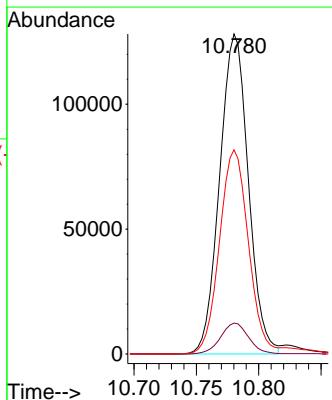
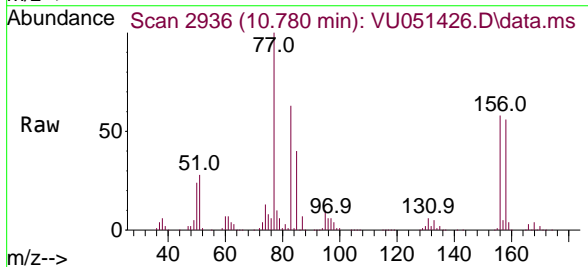
Instrument :
 MSVOA_U
 ClientSampleId :
 VSTDCCC010EC

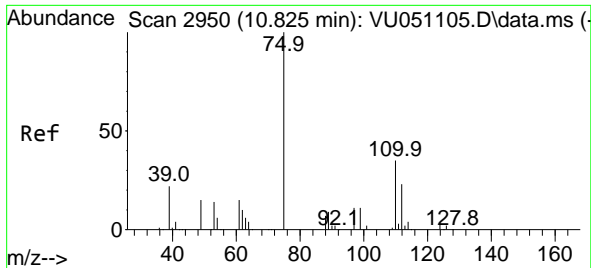
Tgt Ion:105 Resp: 725313
 Ion Ratio Lower Upper
 105 100
 120 26.3 12.6 37.8



#70
 1,1,2,2-Tetrachloroethane
 Concen: 9.964 ug/l
 RT: 10.780 min Scan# 2936
 Delta R.T. -0.000 min
 Lab File: VU051426.D
 Acq: 14 Oct 2022 17:38

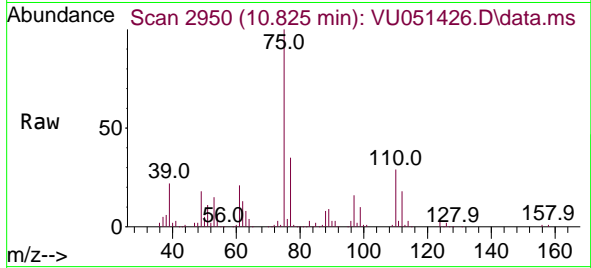
Tgt Ion: 83 Resp: 205547
 Ion Ratio Lower Upper
 83 100
 131 9.4 7.7 11.5
 85 66.4 51.2 76.8



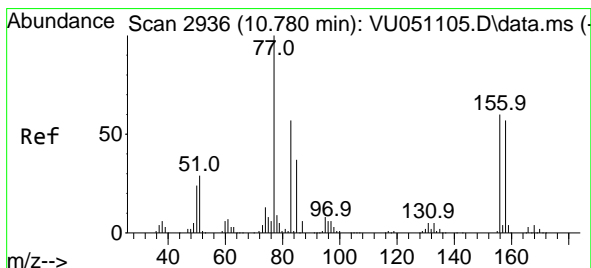
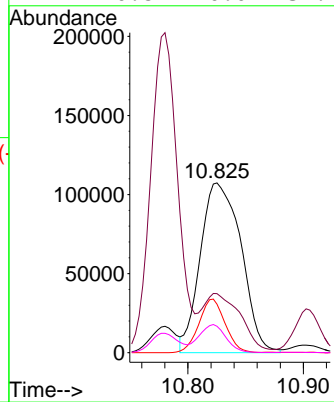
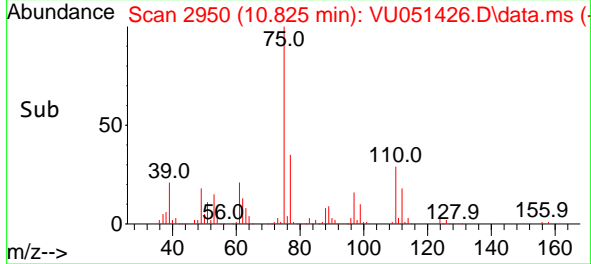


#71
 1,2,3-Trichloropropane
 Concen: 15.730 ug/l
 RT: 10.825 min Scan# 2950
 Delta R.T. -0.000 min
 Lab File: VU051426.D
 Acq: 14 Oct 2022 17:38

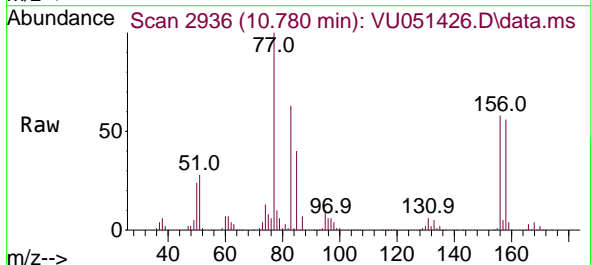
Instrument : MSVOA_U
 ClientSampleId : VSTDCCC010EC



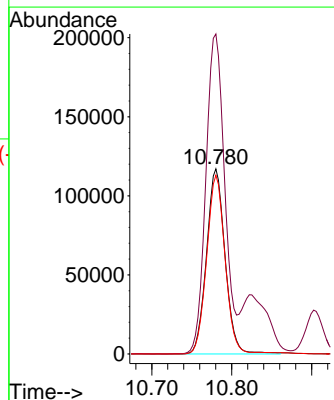
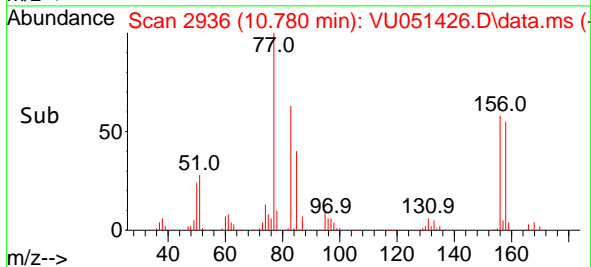
Tgt Ion: 75 Resp: 263379
 Ion Ratio Lower Upper
 75 100
 77 31.1 0.0 112.4
 110 20.3 0.0 70.6
 97 10.8 0.0 37.4

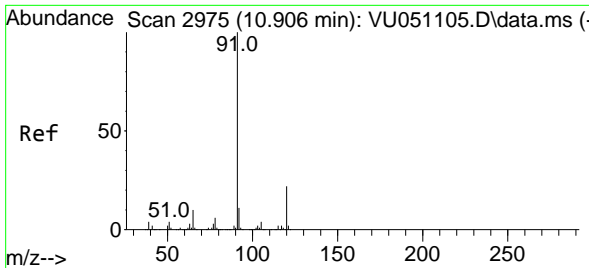


#72
 Bromobenzene
 Concen: 10.442 ug/l
 RT: 10.780 min Scan# 2936
 Delta R.T. -0.000 min
 Lab File: VU051426.D
 Acq: 14 Oct 2022 17:38



Tgt Ion: 156 Resp: 189280
 Ion Ratio Lower Upper
 156 100
 77 174.7 0.0 344.4
 158 95.9 0.0 192.2

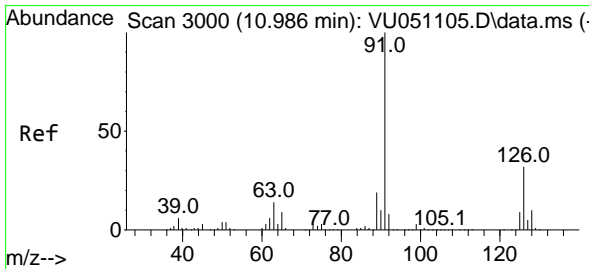
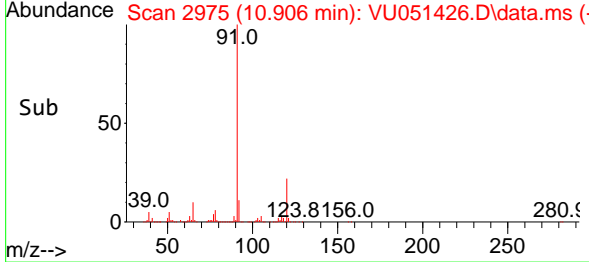
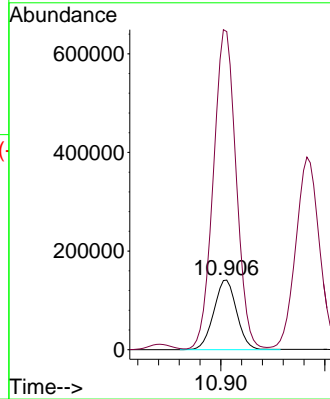
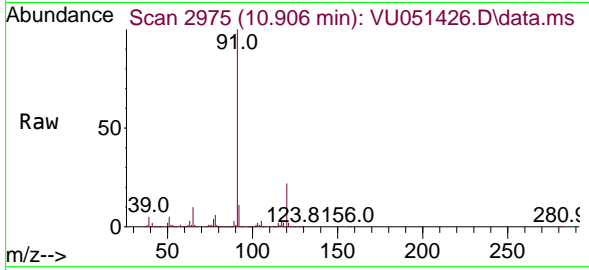




#73
 n-propylbenzene
 Concen: 9.612 ug/l
 RT: 10.906 min Scan# 2975
 Delta R.T. -0.000 min
 Lab File: VU051426.D
 Acq: 14 Oct 2022 17:38

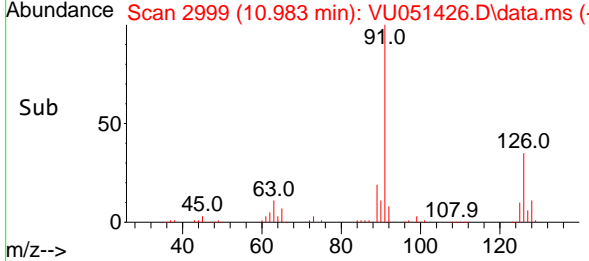
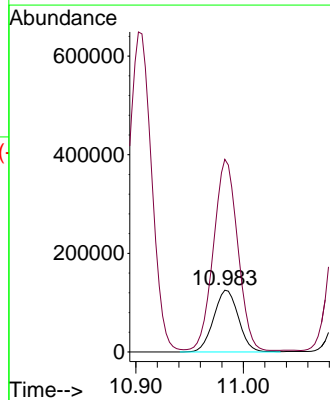
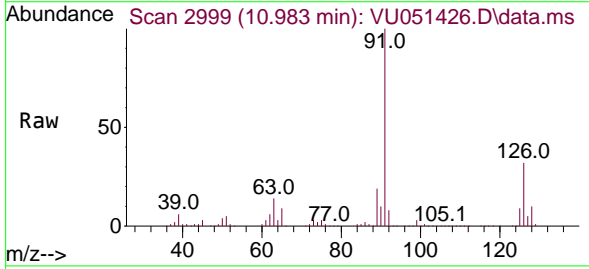
Instrument : MSVOA_U
 ClientSampleId : VSTDCCC010EC

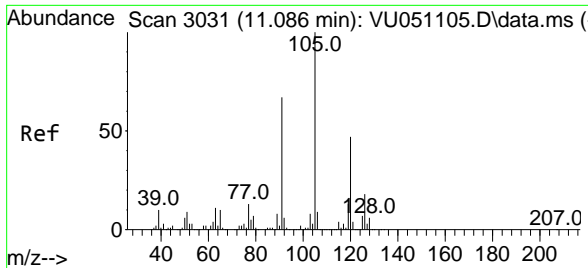
Tgt Ion:120 Resp: 216228
 Ion Ratio Lower Upper
 120 100
 91 455.7 367.8 551.6



#74
 2-Chlorotoluene
 Concen: 11.409 ug/l
 RT: 10.983 min Scan# 2999
 Delta R.T. -0.003 min
 Lab File: VU051426.D
 Acq: 14 Oct 2022 17:38

Tgt Ion:126 Resp: 200380
 Ion Ratio Lower Upper
 126 100
 91 302.8 0.0 620.6

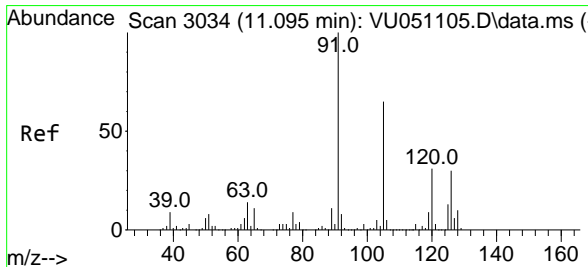
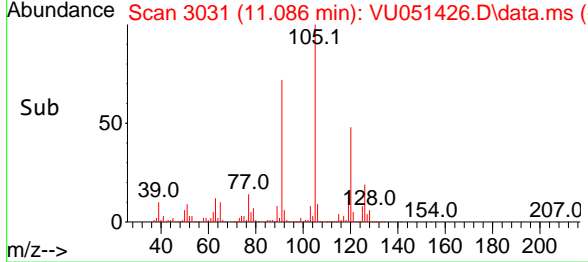
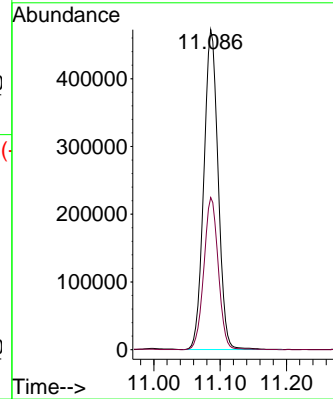
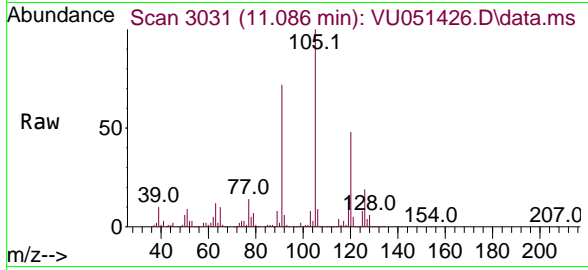




#75
 1,3,5-Trimethylbenzene
 Concen: 9.641 ug/l
 RT: 11.086 min Scan# 3031
 Delta R.T. -0.000 min
 Lab File: VU051426.D
 Acq: 14 Oct 2022 17:38

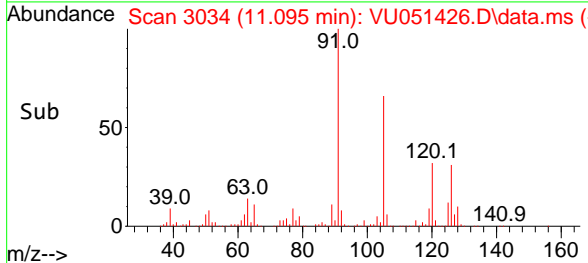
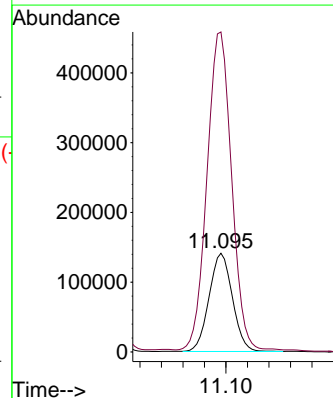
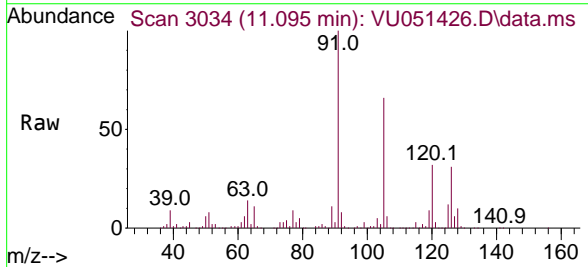
Instrument : MSVOA_U
 ClientSampleId : VSTDCCC010EC

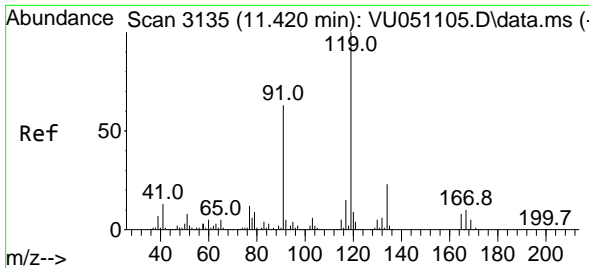
Tgt Ion:105 Resp: 706057
 Ion Ratio Lower Upper
 105 100
 120 48.0 37.6 56.4



#76
 4-Chlorotoluene
 Concen: 10.023 ug/l
 RT: 11.095 min Scan# 3034
 Delta R.T. 0.000 min
 Lab File: VU051426.D
 Acq: 14 Oct 2022 17:38

Tgt Ion:126 Resp: 211237
 Ion Ratio Lower Upper
 126 100
 91 349.5 0.0 738.8



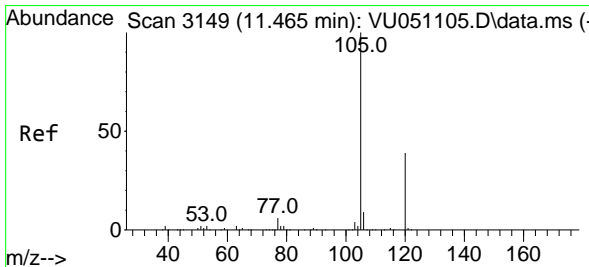
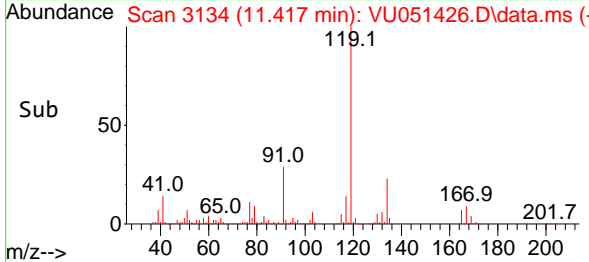
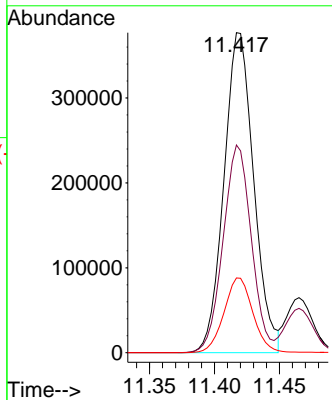
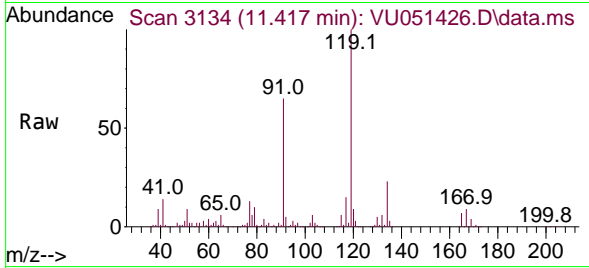


#77
 tert-Butylbenzene
 Concen: 10.987 ug/l
 RT: 11.417 min Scan# 3134
 Delta R.T. -0.003 min
 Lab File: VU051426.D
 Acq: 14 Oct 2022 17:38

Instrument : MSVOA_U
 ClientSampleId : VSTDCCC010EC

Tgt Ion:119 Resp: 602438

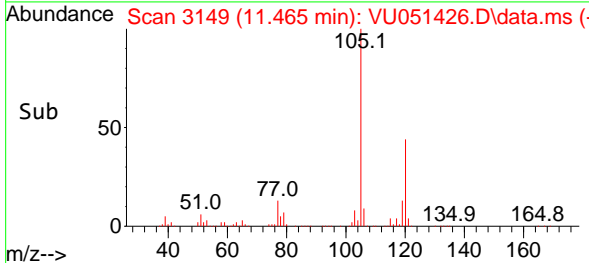
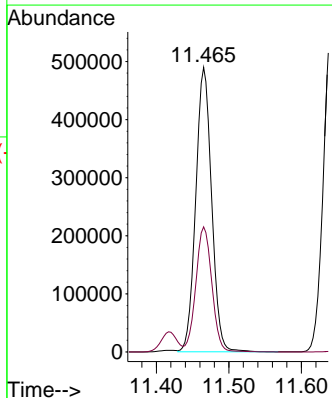
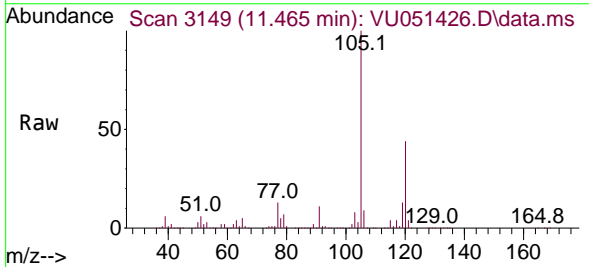
Ion	Ratio	Lower	Upper
119	100		
91	61.5	30.4	91.3
134	22.8	17.8	26.6

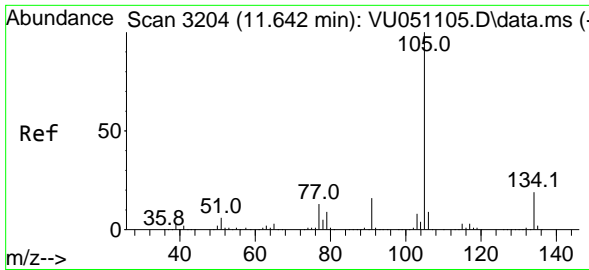


#78
 1,2,4-Trimethylbenzene
 Concen: 9.724 ug/l
 RT: 11.465 min Scan# 3149
 Delta R.T. 0.000 min
 Lab File: VU051426.D
 Acq: 14 Oct 2022 17:38

Tgt Ion:105 Resp: 742404

Ion	Ratio	Lower	Upper
105	100		
120	44.5	21.6	65.0

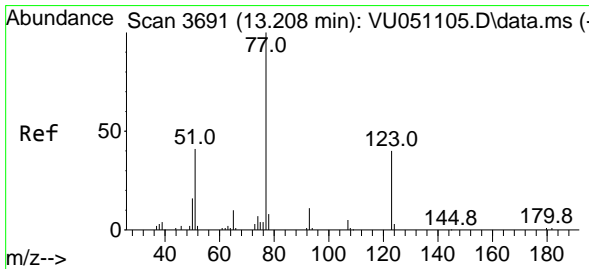
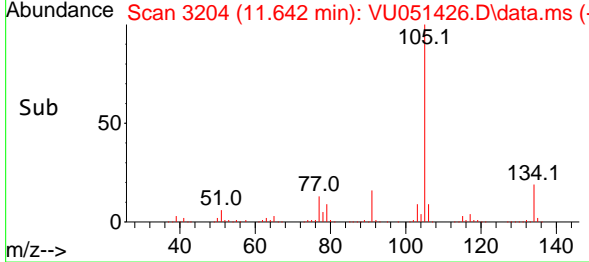
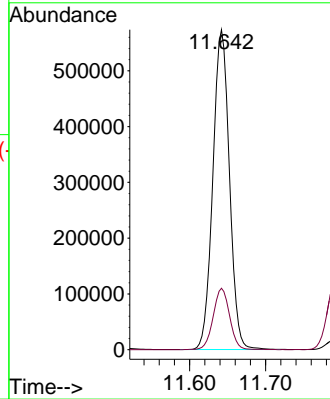
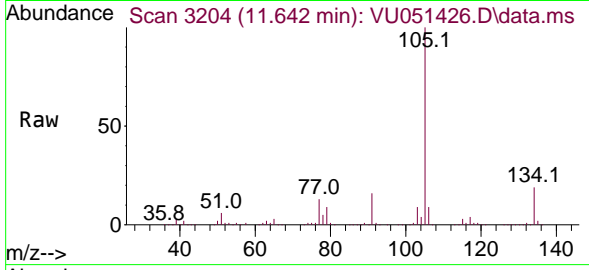




#79
 sec-Butylbenzene
 Concen: 9.436 ug/l
 RT: 11.642 min Scan# 31
 Delta R.T. -0.000 min
 Lab File: VU051426.D
 Acq: 14 Oct 2022 17:38

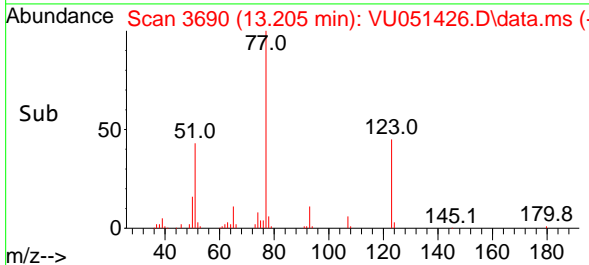
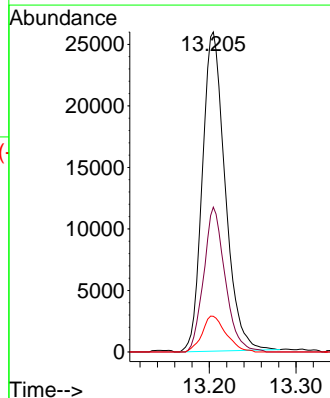
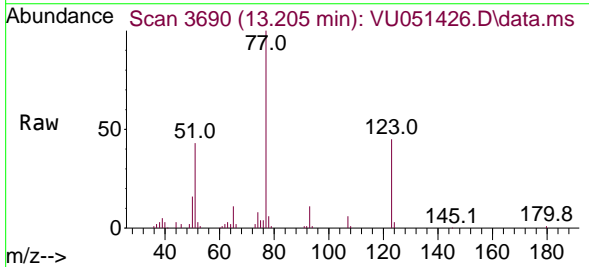
Instrument :
 MSVOA_U
 ClientSampleId :
 VSTDCCC010EC

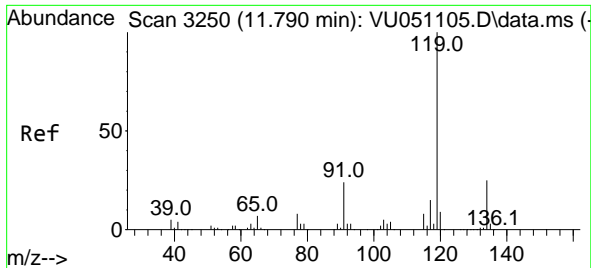
Tgt Ion:105 Resp: 868144
 Ion Ratio Lower Upper
 105 100
 134 19.0 15.4 23.0



#80
 Nitrobenzene
 Concen: 50.309 ug/l
 RT: 13.205 min Scan# 3690
 Delta R.T. -0.003 min
 Lab File: VU051426.D
 Acq: 14 Oct 2022 17:38

Tgt Ion: 77 Resp: 47425
 Ion Ratio Lower Upper
 77 100
 123 42.7 18.1 64.3
 65 11.8 10.8 13.8

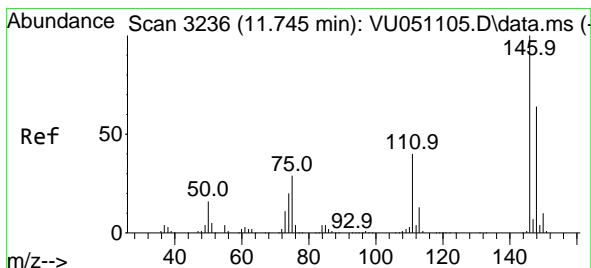
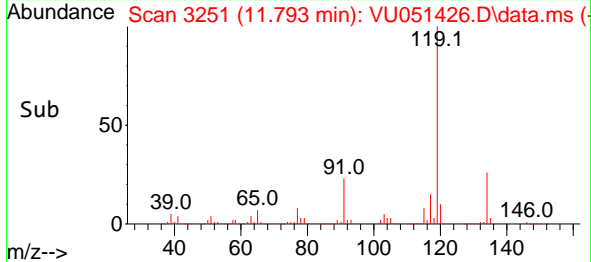
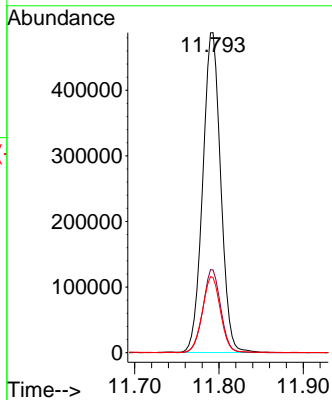
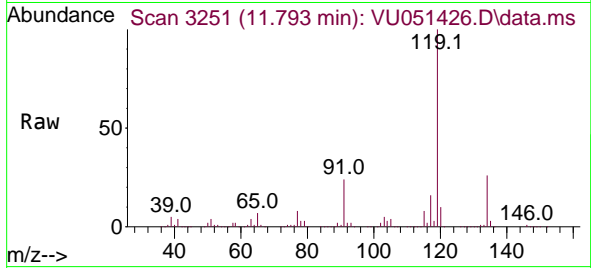




#81
 p-Isopropyltoluene
 Concen: 9.540 ug/l
 RT: 11.793 min Scan# 31
 Delta R.T. 0.003 min
 Lab File: VU051426.D
 Acq: 14 Oct 2022 17:38

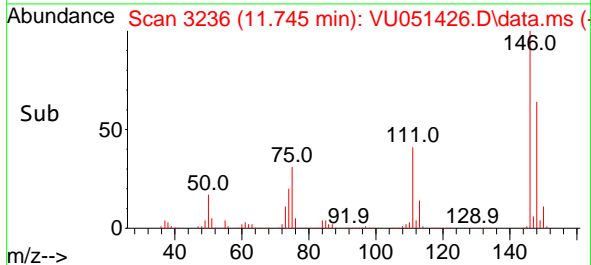
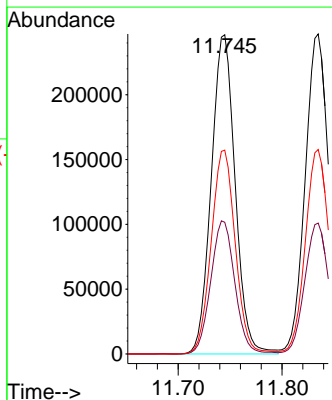
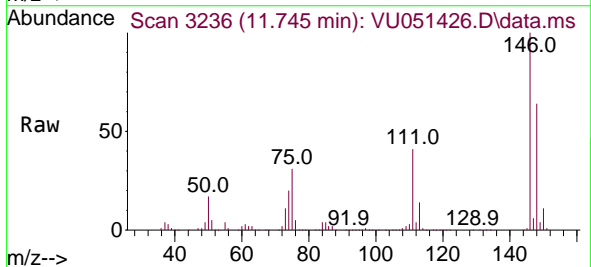
Instrument :
 MSVOA_U
 ClientSampleId :
 VSTDCCC010EC

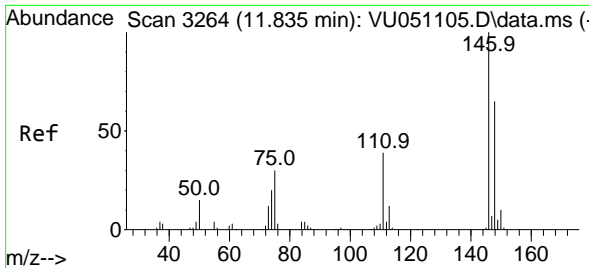
Tgt Ion:119 Resp: 722852
 Ion Ratio Lower Upper
 119 100
 134 25.8 20.5 30.7
 91 23.9 19.8 29.6



#82
 1,3-Dichlorobenzene
 Concen: 10.289 ug/l
 RT: 11.745 min Scan# 3236
 Delta R.T. -0.000 min
 Lab File: VU051426.D
 Acq: 14 Oct 2022 17:38

Tgt Ion:146 Resp: 393091
 Ion Ratio Lower Upper
 146 100
 111 42.1 33.4 50.2
 148 64.5 51.2 76.8



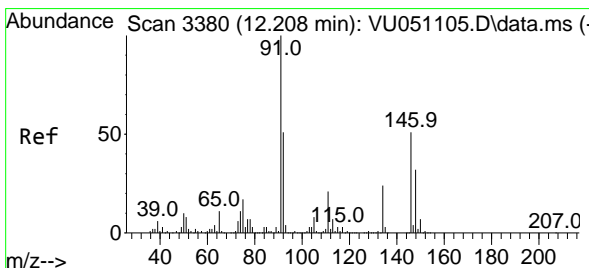
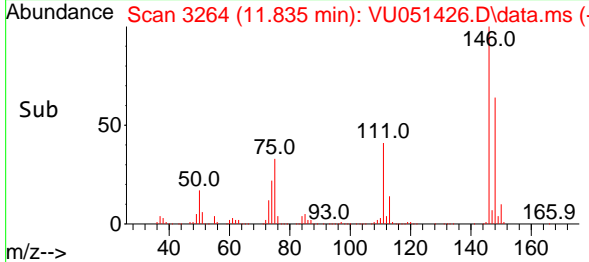
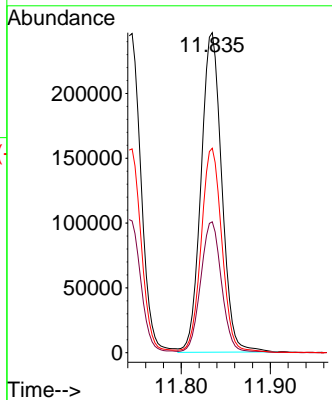
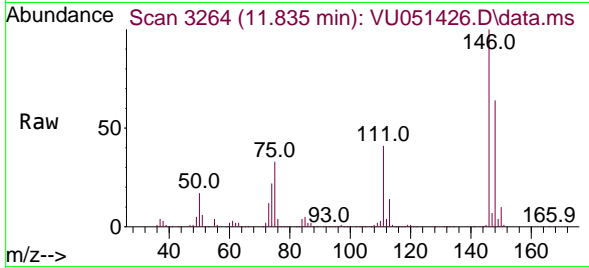


#83
 1,4-Dichlorobenzene
 Concen: 10.572 ug/l
 RT: 11.835 min Scan# 311
 Delta R.T. -0.000 min
 Lab File: VU051426.D
 Acq: 14 Oct 2022 17:38

Instrument :
 MSVOA_U
 ClientSampleId :
 VSTDCCC010EC

Tgt Ion:146 Resp: 398092

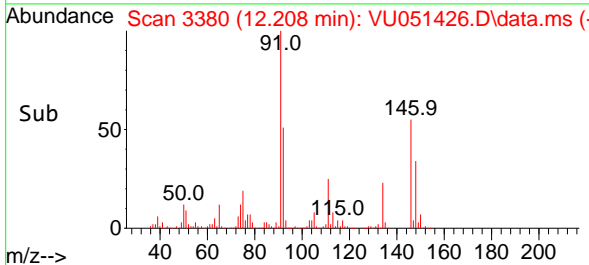
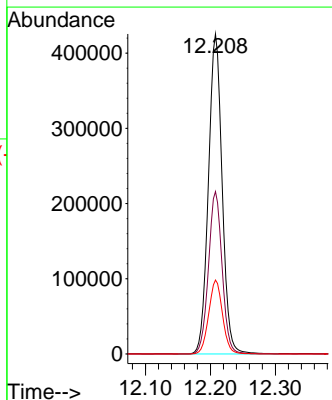
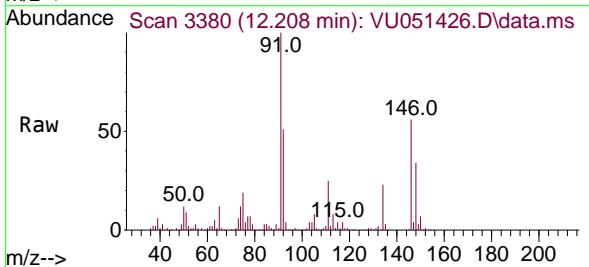
Ion	Ratio	Lower	Upper
146	100		
111	41.2	32.6	49.0
148	64.2	51.6	77.4

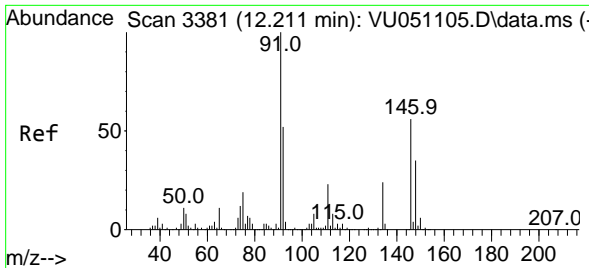


#84
 n-Butylbenzene
 Concen: 9.063 ug/l
 RT: 12.208 min Scan# 3380
 Delta R.T. -0.000 min
 Lab File: VU051426.D
 Acq: 14 Oct 2022 17:38

Tgt Ion: 91 Resp: 625865

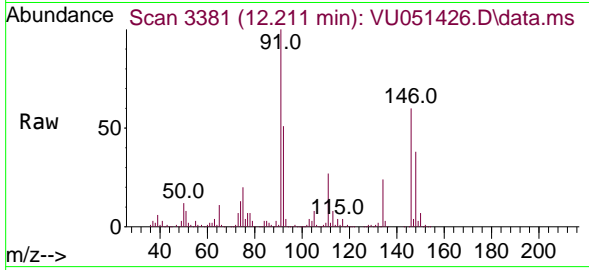
Ion	Ratio	Lower	Upper
91	100		
92	50.5	42.3	63.5
134	23.2	19.6	29.4



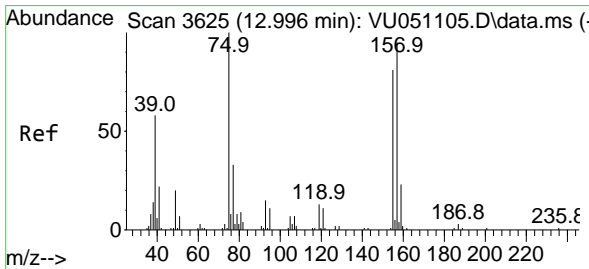
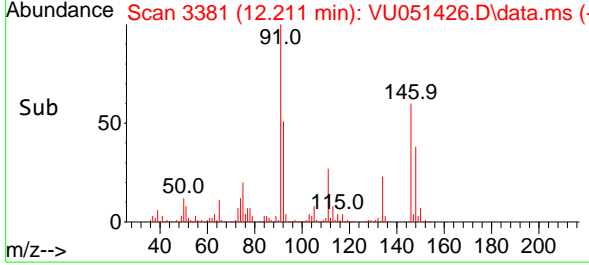
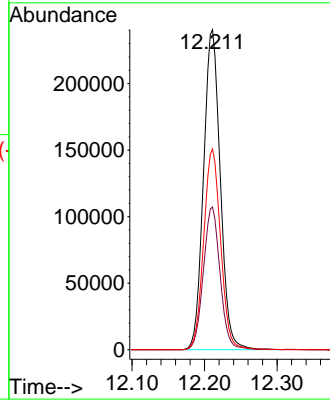


#85
 1,2-Dichlorobenzene
 Concen: 10.269 ug/l
 RT: 12.211 min Scan# 3381
 Delta R.T. 0.000 min
 Lab File: VU051426.D
 Acq: 14 Oct 2022 17:38

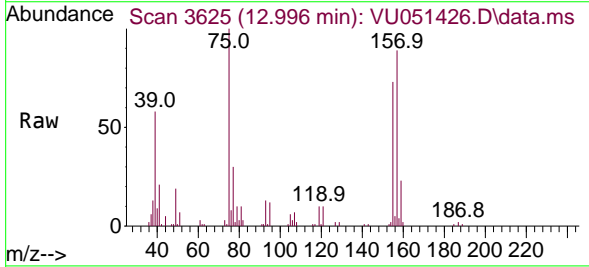
Instrument : MSVOA_U
 ClientSampleId : VSTDCCC010EC



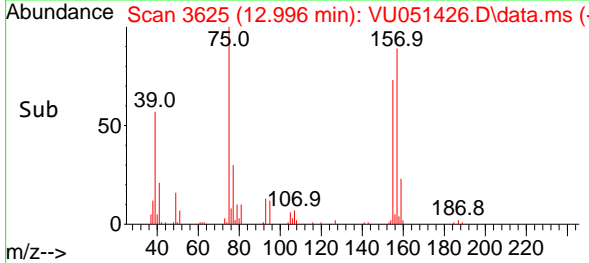
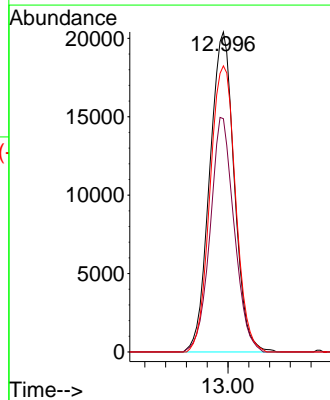
Tgt Ion:146 Resp: 386482
 Ion Ratio Lower Upper
 146 100
 111 44.5 22.1 66.1
 148 63.4 32.1 96.3

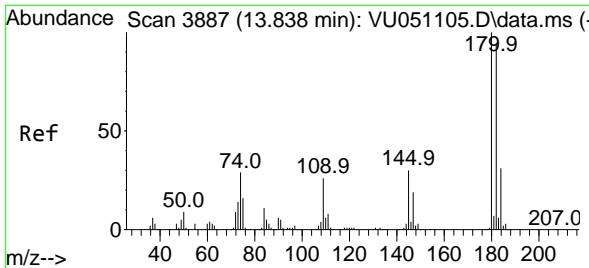


#86
 1,2-Dibromo-3-Chloropropane
 Concen: 10.489 ug/l
 RT: 12.996 min Scan# 3625
 Delta R.T. -0.000 min
 Lab File: VU051426.D
 Acq: 14 Oct 2022 17:38



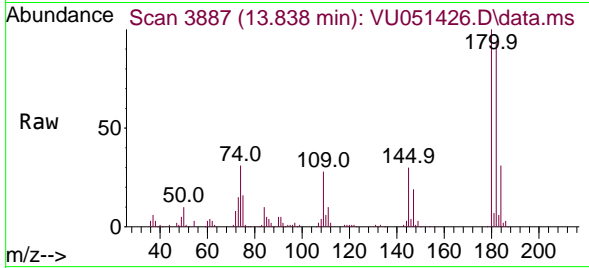
Tgt Ion: 75 Resp: 33456
 Ion Ratio Lower Upper
 75 100
 155 71.5 66.8 100.2
 157 92.7 83.8 125.8



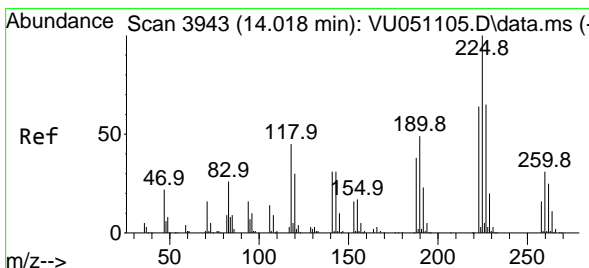
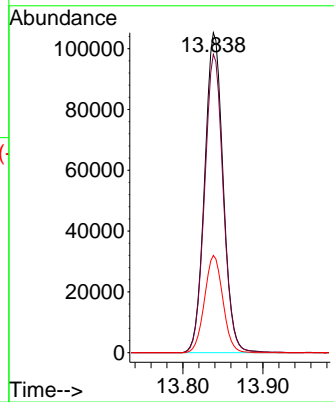
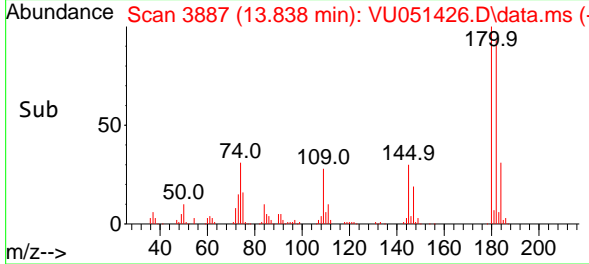


#87
 1,2,4-Trichlorobenzene
 Concen: 8.032 ug/l
 RT: 13.838 min Scan# 3887
 Delta R.T. -0.000 min
 Lab File: VU051426.D
 Acq: 14 Oct 2022 17:38

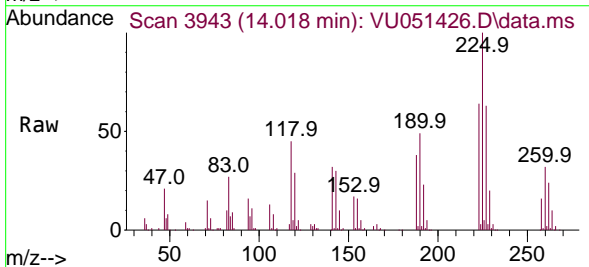
Instrument : MSVOA_U
 ClientSampleId : VSTDCCC010EC



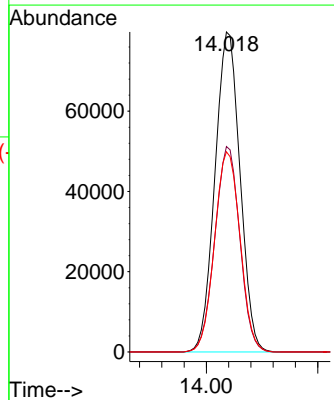
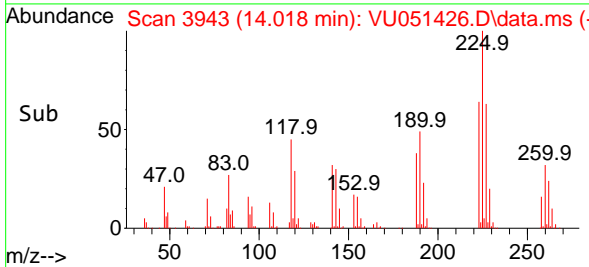
Tgt Ion:180 Resp: 169432
 Ion Ratio Lower Upper
 180 100
 182 93.9 77.0 115.6
 145 30.1 25.7 38.5

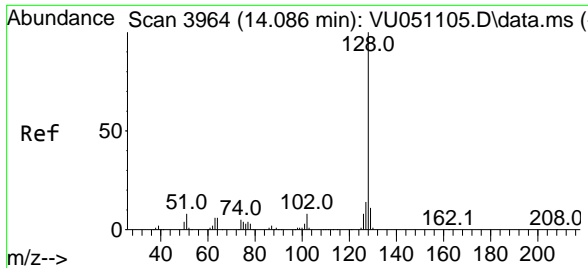


#88
 Hexachlorobutadiene
 Concen: 9.528 ug/l
 RT: 14.018 min Scan# 3943
 Delta R.T. -0.000 min
 Lab File: VU051426.D
 Acq: 14 Oct 2022 17:38



Tgt Ion:225 Resp: 124634
 Ion Ratio Lower Upper
 225 100
 223 63.9 50.6 76.0
 227 63.7 50.7 76.1



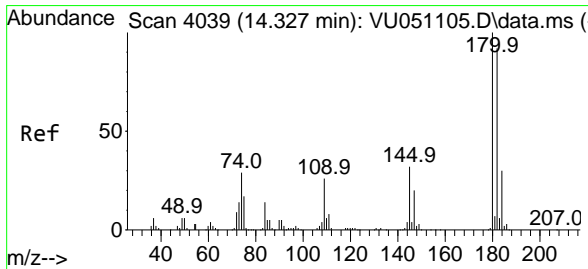
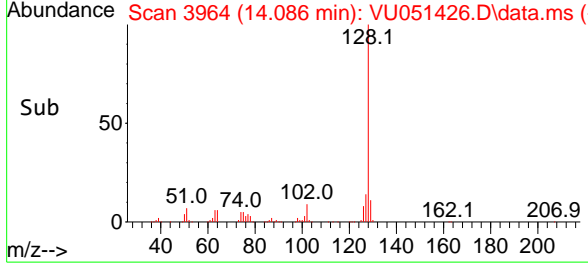
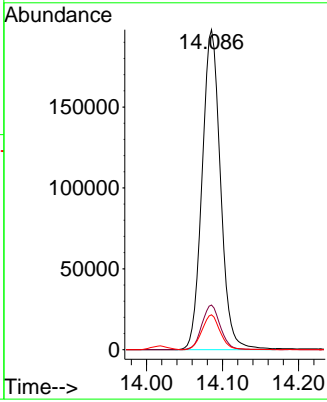
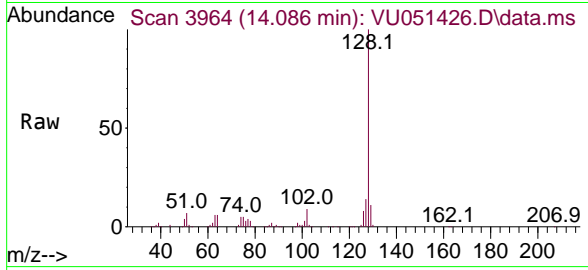


#89
 Naphthalene
 Concen: 9.113 ug/l
 RT: 14.086 min Scan# 3964
 Delta R.T. -0.000 min
 Lab File: VU051426.D
 Acq: 14 Oct 2022 17:38

Instrument : MSVOA_U
 ClientSampleId : VSTDCCC010EC

Tgt Ion:128 Resp: 332682

Ion	Ratio	Lower	Upper
128	100		
127	14.0	10.1	15.1
129	10.8	8.6	12.8



#90
 1,2,3-Trichlorobenzene
 Concen: 8.733 ug/l
 RT: 14.327 min Scan# 4039
 Delta R.T. -0.000 min
 Lab File: VU051426.D
 Acq: 14 Oct 2022 17:38

Tgt Ion:180 Resp: 193116

Ion	Ratio	Lower	Upper
180	100		
182	96.6	76.6	114.8
145	33.1	27.3	40.9

