

Data Path : Z:\VOASRV\HPCHEM1\MSVOA U\DATA\VU101620\
 Data File : VU040741.D
 Acq On : 16 Oct 2020 12:05
 Operator : SY/MD
 Sample : L4419-03
 Misc : 25.0mL/MSVOA U/WATER
 ALS Vial : 6 Sample Multiplier: 1

Instrument :
 MSVOA_U
 ClientSampled :
 COAHO

Quant Time: Oct 17 03:05:11 2020
 Quant Method : Z:\VOASRV\HPCHEM1\MSVOA_U\METHOD\SOMUTR100820WMA.M
 Quant Title : TRACE VOA SOM01.0
 QLast Update : Fri Oct 16 23:38:52 2020
 Response via : Initial Calibration

Internal Standards	R.T.	QIon	Response	Conc	Units	Dev(Min)
1) 1,4-Difluorobenzene	6.26	114	113031	5.00	ug/L	0.00
28) Chlorobenzene-d5	9.42	117	118316	5.00	ug/L	0.00
60) 1,4-Dichlorobenzene-d4	11.81	152	47283	5.00	ug/L	0.00

System Monitoring Compounds

4) Vinyl Chloride-d3	1.60	65	40977	4.37	ug/L	0.00
Spiked Amount	5.000	Range	40 - 130	Recovery	=	87.40%
7) Chloroethane-d5	1.92	69	38022	5.26	ug/L	0.00
Spiked Amount	5.000	Range	65 - 130	Recovery	=	105.20%
11) 1,1-Dichloroethene-d2	2.58	63	81958	4.48	ug/L	0.00
Spiked Amount	5.000	Range	60 - 125	Recovery	=	89.60%
20) 2-Butanone-d5	4.66	46	166436	55.53	ug/L	0.00
Spiked Amount	50.000	Range	40 - 130	Recovery	=	111.06%
24) Chloroform-d	5.08	84	89000	5.42	ug/L	0.00
Spiked Amount	5.000	Range	70 - 125	Recovery	=	108.40%
26) 1,2-Dichloroethane-d4	5.72	65	54726	5.47	ug/L	0.00
Spiked Amount	5.000	Range	70 - 130	Recovery	=	109.40%
32) Benzene-d6	5.74	84	163080	5.11	ug/L	0.00
Spiked Amount	5.000	Range	70 - 125	Recovery	=	102.20%
36) 1,2-Dichloropropane-d6	6.70	67	56071	5.29	ug/L	0.00
Spiked Amount	5.000	Range	60 - 140	Recovery	=	105.80%
41) Toluene-d8	7.91	98	129058	4.52	ug/L	0.00
Spiked Amount	5.000	Range	70 - 130	Recovery	=	90.40%
43) trans-1,3-Dichloropropene-	8.19	79	19102	4.26	ug/L	0.00
Spiked Amount	5.000	Range	55 - 130	Recovery	=	85.20%
46) 2-Hexanone-d5	8.64	63	110014	47.57	ug/L	0.00
Spiked Amount	50.000	Range	45 - 130	Recovery	=	95.14%
57) 1,1,2,2-Tetrachloroethane-	10.75	84	48517	5.11	ug/L	0.00
Spiked Amount	5.000	Range	65 - 120	Recovery	=	102.20%
64) 1,2-Dichlorobenzene-d4	12.19	152	50614	5.77	ug/L	0.00
Spiked Amount	5.000	Range	80 - 120	Recovery	=	115.40%

Target Compounds

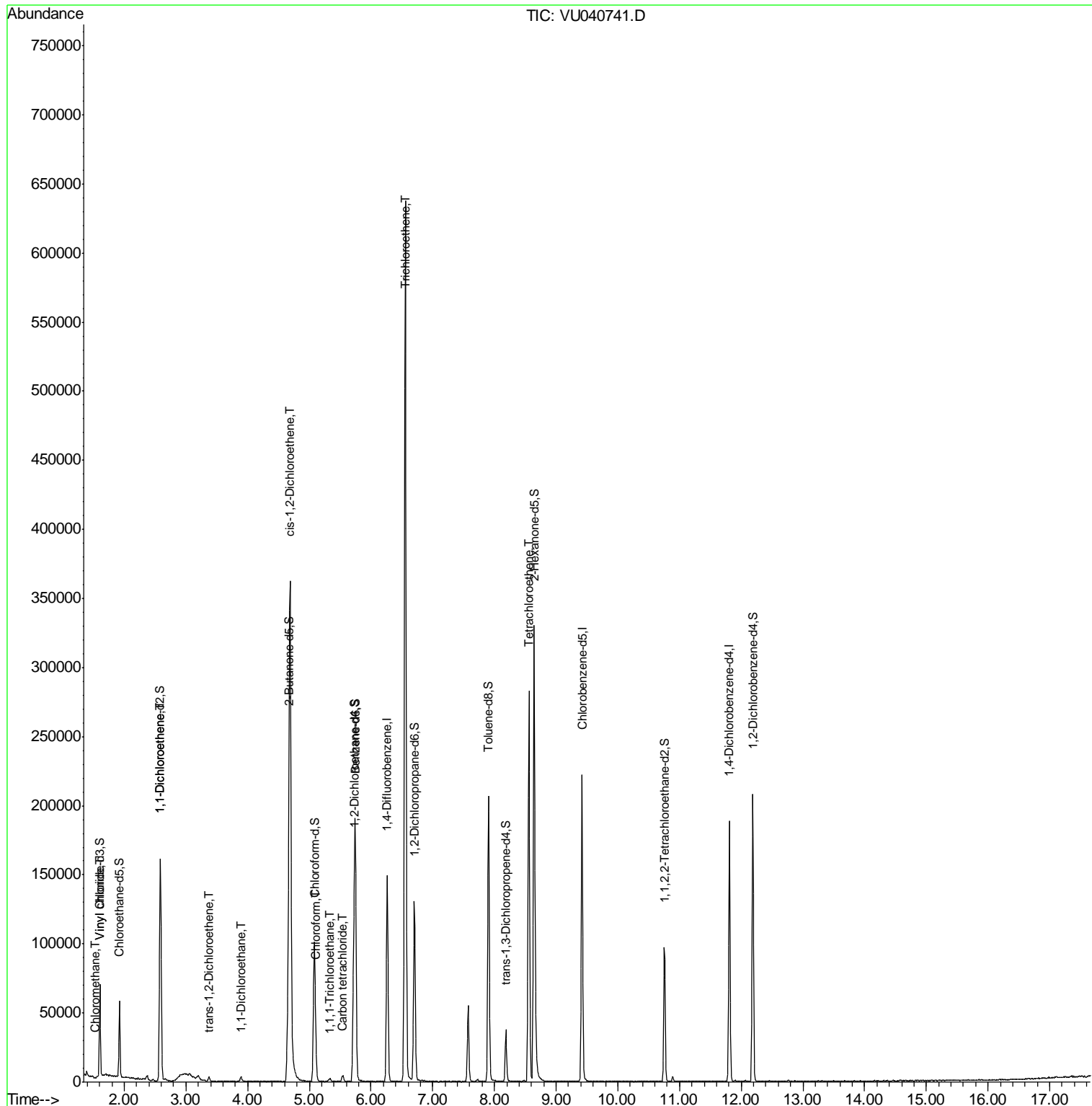
Target Compounds	R.T.	QIon	Response	Conc	Units	Ovalue
3) Chloromethane	1.53	50	477	0.050	ug/L	85
5) Vinyl chloride	1.61	62	2061	0.204	ug/L #	1
12) 1,1-Dichloroethene	2.59	96	28415	3.523	ug/L #	71
18) trans-1,2-Dichloroethene	3.37	96	993	0.118	ug/L	86
19) 1,1-Dichloroethane	3.89	63	4356	0.249	ug/L	95
22) cis-1,2-Dichloroethene	4.69	96	157262	17.274	ug/L	95
25) Chloroform	5.11	83	6275	0.352	ug/L	98
29) 1,1,1-Trichloroethane	5.33	97	1772	0.111	ug/L #	75
31) Carbon tetrachloride	5.53	117	2926	0.215	ug/L	97
34) Trichloroethene	6.56	95	210907	21.405	ug/L	98
47) Tetrachloroethene	8.56	164	58985	8.391	ug/L	96

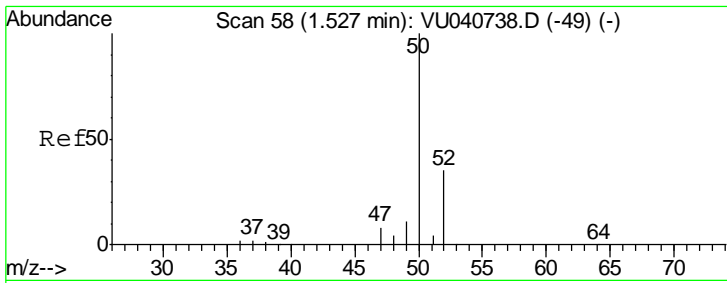
(#) = qualifier out of range (m) = manual integration (+) = signals summed

Data Path : Z:\VOASRV\HPCHEM1\MSVOA U\DATA\VU101620\
 Data File : VU040741.D
 Acq On : 16 Oct 2020 12:05
 Operator : SY/MD
 Sample : L4419-03
 Misc : 25.0mL/MSVOA U/WATER
 ALS Vial : 6 Sample Multiplier: 1

Instrument :
 MSVOA_U
 ClientSampleId :
 COAH0

Quant Time: Oct 17 03:05:11 2020
 Quant Method : Z:\VOASRV\HPCHEM1\MSVOA_U\METHOD\SOMUTR100820WMA.M
 Quant Title : TRACE VOA SOM01.0
 QLast Update : Fri Oct 16 23:38:52 2020
 Response via : Initial Calibration

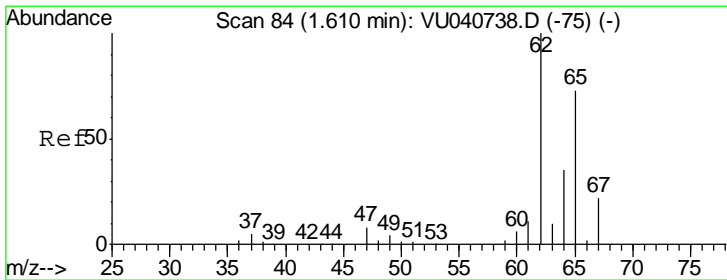
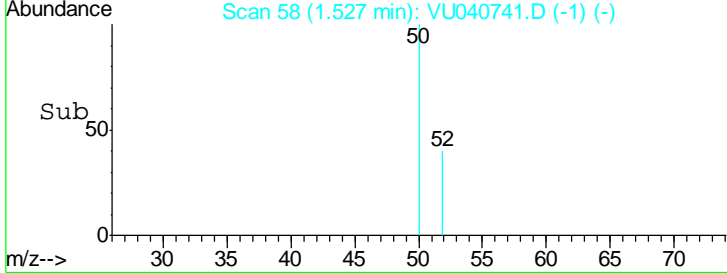
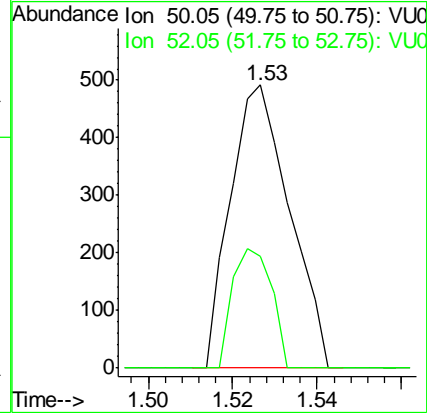
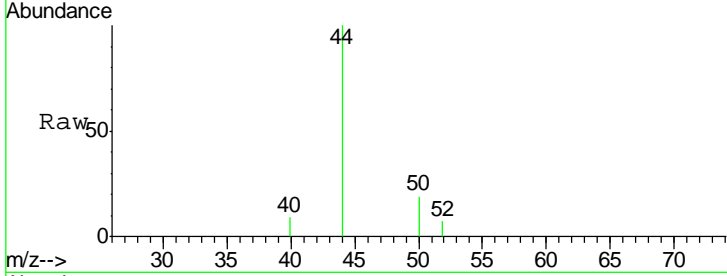




#3
 Chloromethane
 Concen: 0.050 ug/L
 RT: 1.53 min Scan# 58
 Delta R.T. 0.00 min
 Lab File: VU040741.D
 Acq: 16 Oct 2020 12:05

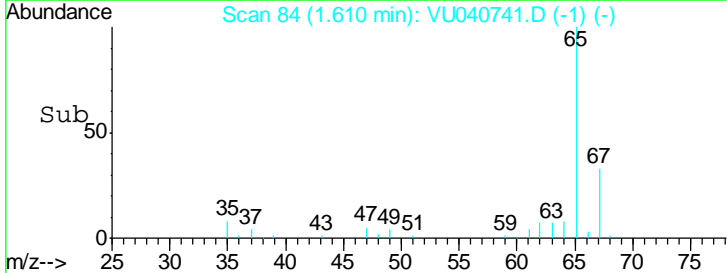
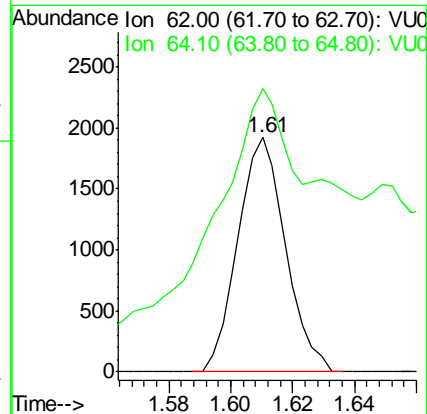
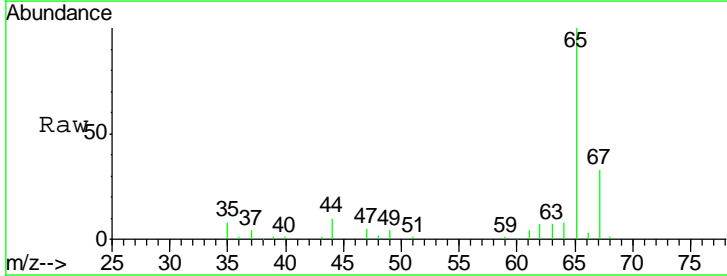
Instrument : MSVOA_U
 ClientSampleId : COAH0

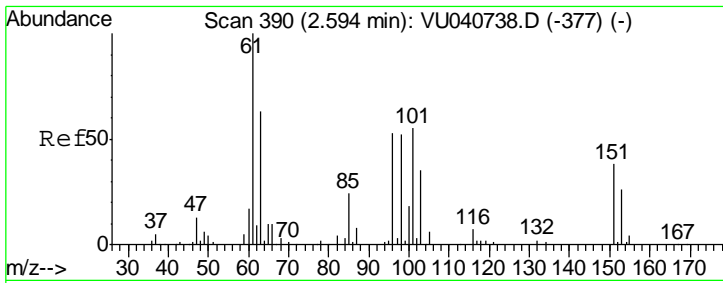
Tgt Ion	Resp	Lower	Upper
50	100		
52	39.6	21.9	40.7



#5
 Vinyl chloride
 Concen: 0.204 ug/L
 RT: 1.61 min Scan# 84
 Delta R.T. 0.00 min
 Lab File: VU040741.D
 Acq: 16 Oct 2020 12:05

Tgt Ion	Resp	Lower	Upper
62	100		
64	120.9	23.7	44.1#

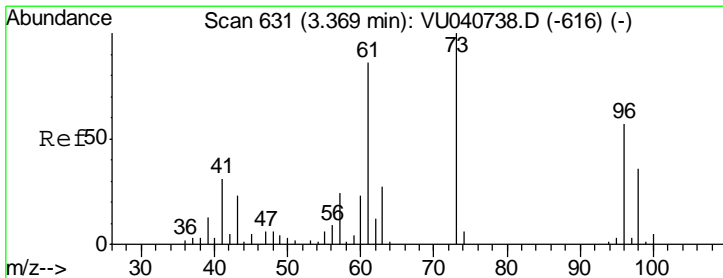
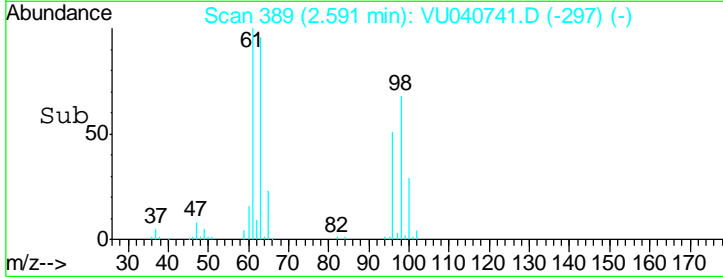
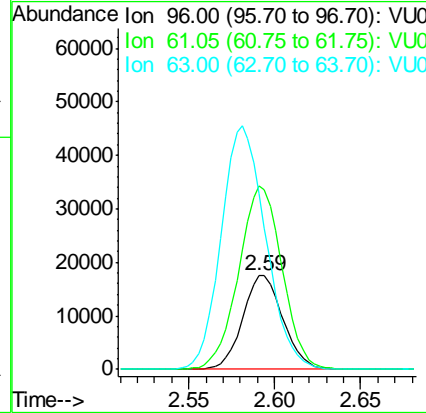
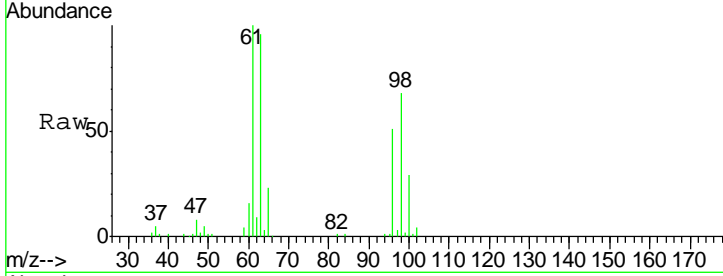




#12
 1,1-Dichloroethene
 Concen: 3.523 ug/L
 RT: 2.59 min Scan# 389
 Delta R.T. -0.00 min
 Lab File: VU040741.D
 Acq: 16 Oct 2020 12:05

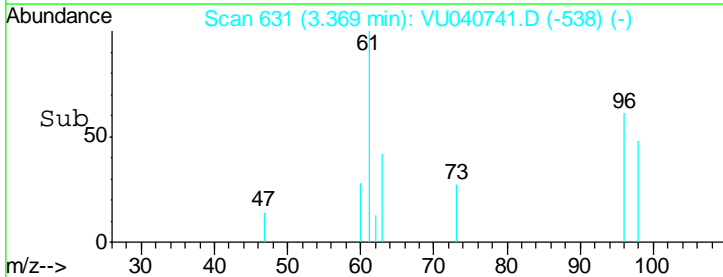
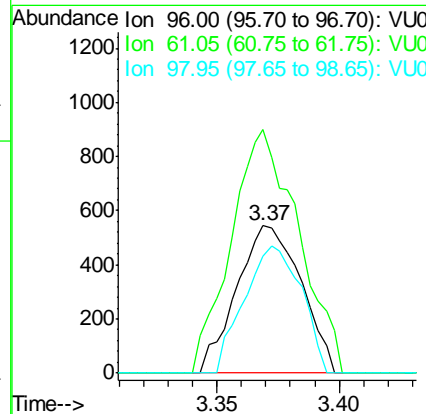
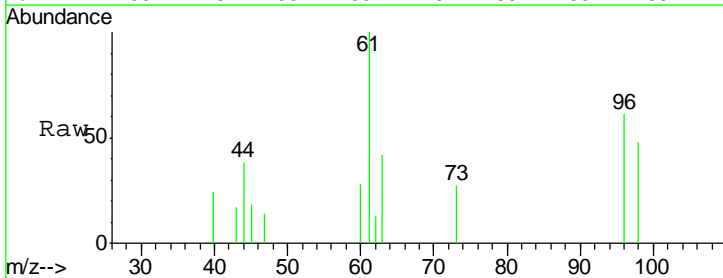
Instrument :
 MSVOA_U
 ClientSampled :
 COAH0

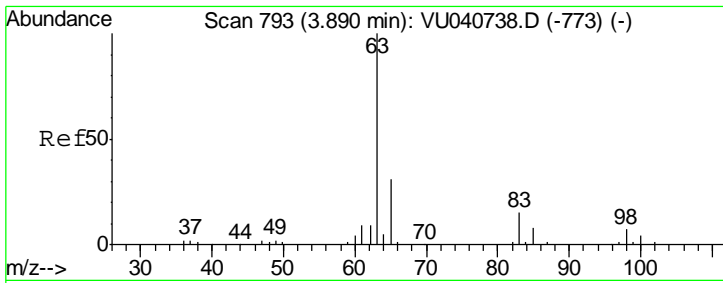
Tgt Ion	Resp	Lower	Upper
96	100		
61	196.2	128.8	239.2
63	188.2	84.6	157.2#



#18
 trans-1,2-Dichloroethene
 Concen: 0.118 ug/L
 RT: 3.37 min Scan# 631
 Delta R.T. 0.00 min
 Lab File: VU040741.D
 Acq: 16 Oct 2020 12:05

Tgt Ion	Resp	Lower	Upper
96	100		
61	165.3	105.9	196.7
98	79.6	43.8	81.3

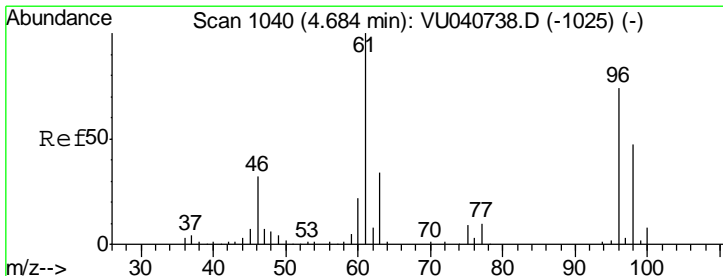
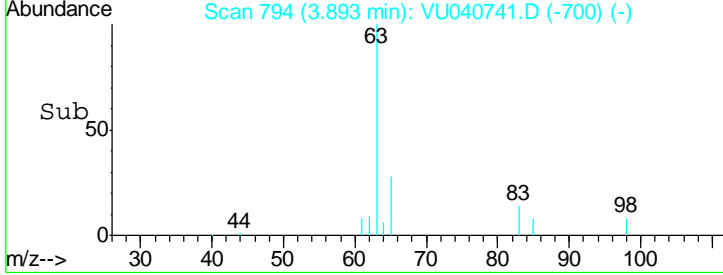
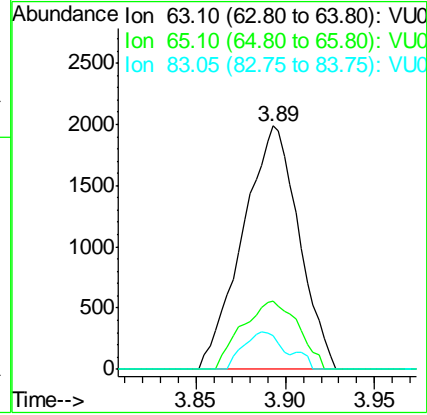
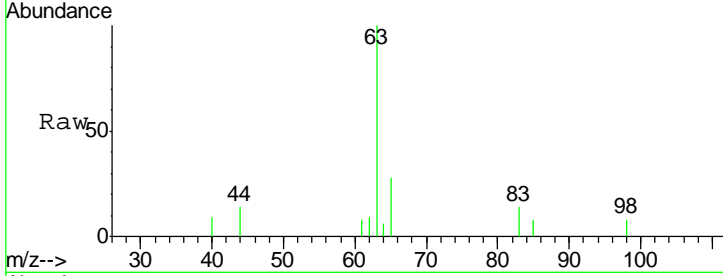




#19
 1,1-Dichloroethane
 Concen: 0.249 ug/L
 RT: 3.89 min Scan# 794
 Delta R.T. 0.00 min
 Lab File: VU040741.D
 Acq: 16 Oct 2020 12:05

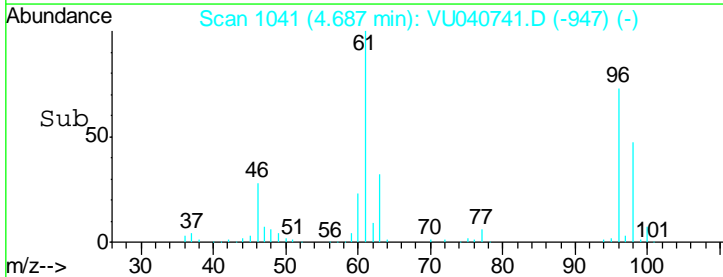
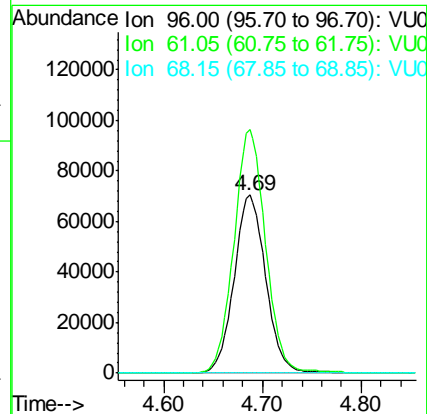
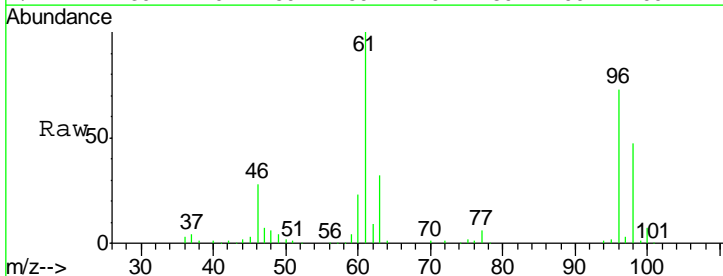
Instrument : MSVOA_U
 ClientSampled : COAH0

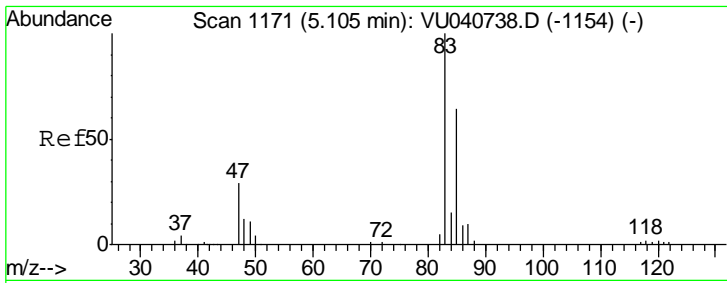
Tgt Ion	Resp	Lower	Upper
63	100		
65	27.8	21.9	40.7
83	13.9	9.6	17.8



#22
 cis-1,2-Dichloroethene
 Concen: 17.274 ug/L
 RT: 4.69 min Scan# 1041
 Delta R.T. 0.00 min
 Lab File: VU040741.D
 Acq: 16 Oct 2020 12:05

Tgt Ion	Resp	Lower	Upper
96	100		
61	137.0	99.8	185.4
68	0.0	0.0	0.0

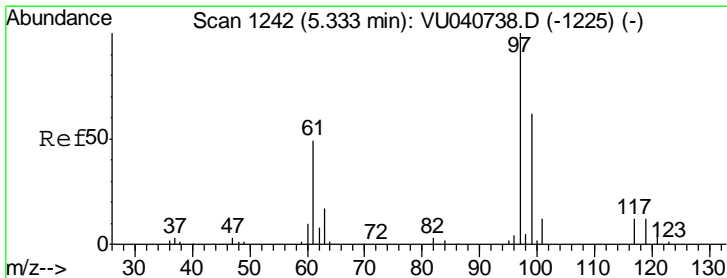
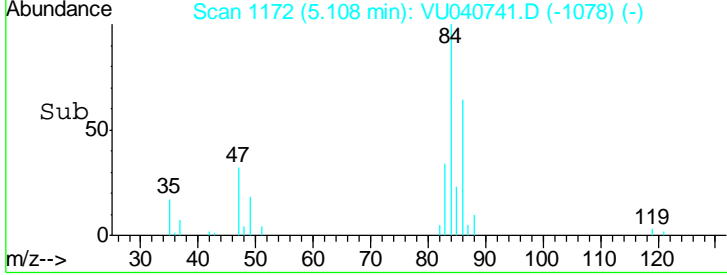
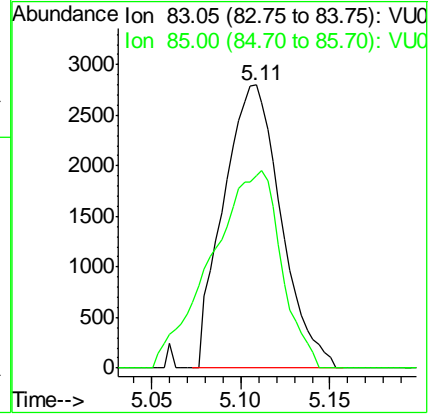
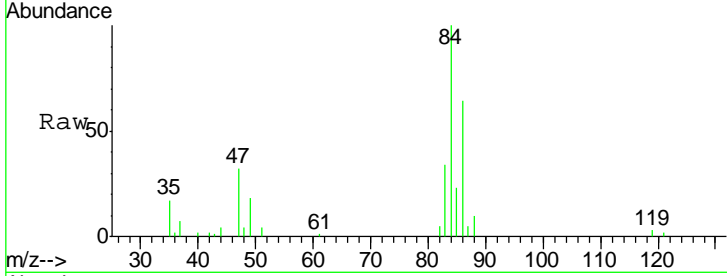




#25
 Chloroform
 Concen: 0.352 ug/L
 RT: 5.11 min Scan# 1172
 Delta R.T. 0.00 min
 Lab File: VU040741.D
 Acq: 16 Oct 2020 12:05

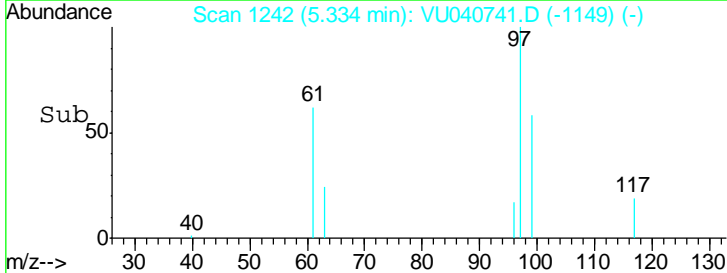
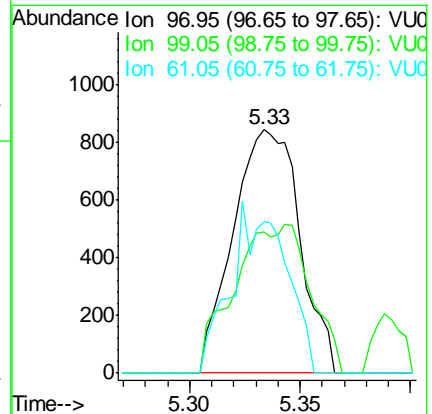
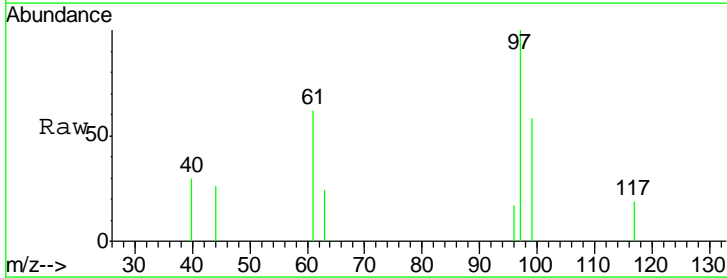
Instrument :
 MSVOA_U
ClientSampled :
 COAH0

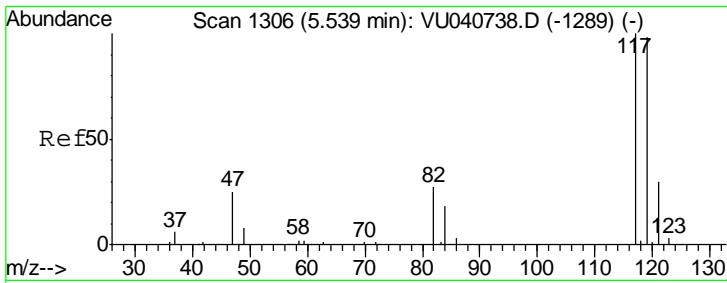
Tgt Ion	Resp	Lower	Upper
83	100		
85	67.9	46.5	86.5



#29
 1,1,1-Trichloroethane
 Concen: 0.111 ug/L
 RT: 5.33 min Scan# 1242
 Delta R.T. 0.00 min
 Lab File: VU040741.D
 Acq: 16 Oct 2020 12:05

Tgt Ion	Resp	Lower	Upper
97	100		
99	36.9	51.3	76.9#
61	57.1	39.4	59.2

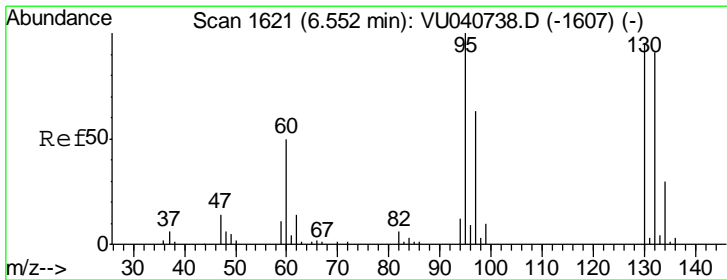
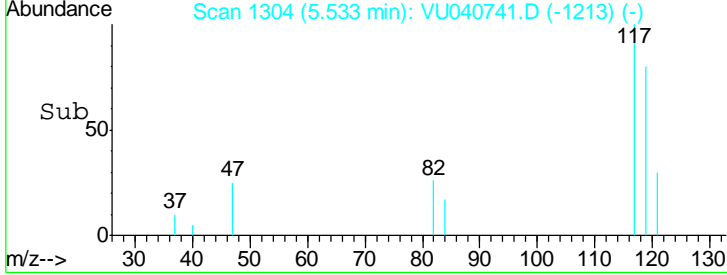
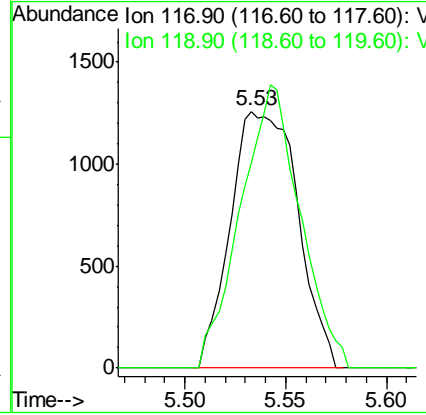
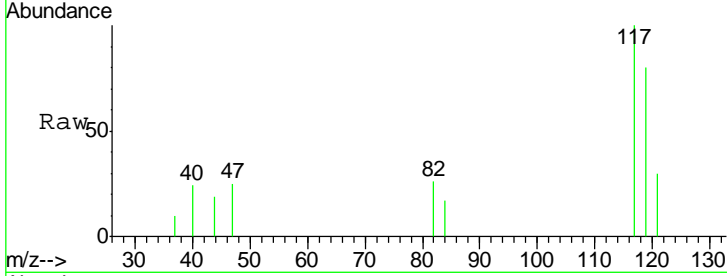




#31
 Carbon tetrachloride
 Concen: 0.215 ug/L
 RT: 5.53 min Scan# 1304
 Delta R.T. -0.01 min
 Lab File: VU040741.D
 Acq: 16 Oct 2020 12:05

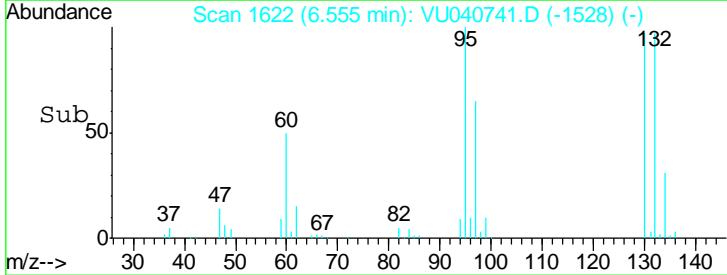
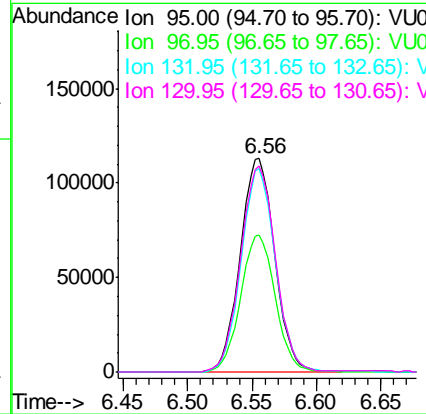
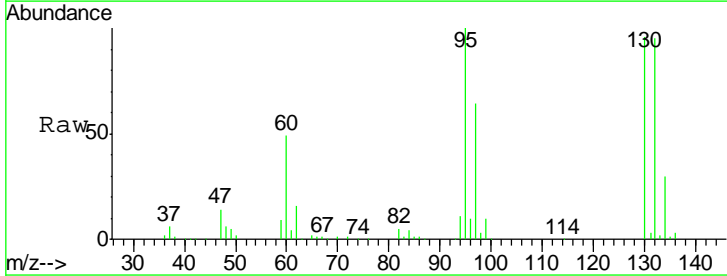
Instrument : MSVOA_U
 ClientSampled : COAH0

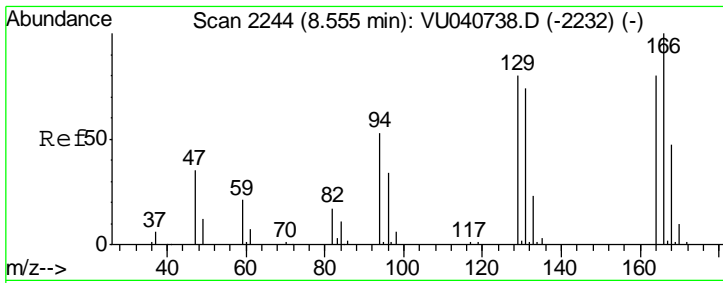
Tgt Ion: 117 Resp: 2926
 Ion Ratio Lower Upper
 117 100
 119 97.7 76.2 114.2



#34
 Trichloroethene
 Concen: 21.405 ug/L
 RT: 6.56 min Scan# 1622
 Delta R.T. 0.00 min
 Lab File: VU040741.D
 Acq: 16 Oct 2020 12:05

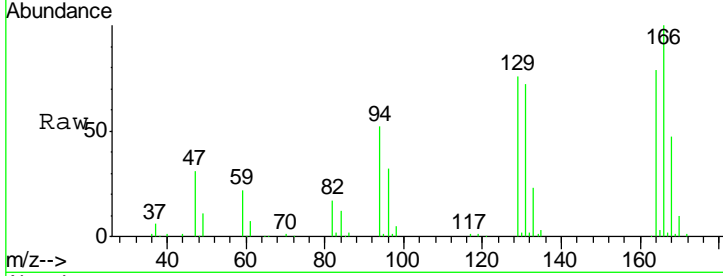
Tgt Ion: 95 Resp: 210907
 Ion Ratio Lower Upper
 95 100
 97 64.4 45.5 84.5
 132 95.4 67.5 125.4
 130 96.3 69.9 129.9





#47
 Tetrachloroethene
 Concen: 8.391 ug/L
 RT: 8.56 min Scan# 2245
 Delta R.T. 0.00 min
 Lab File: VU040741.D
 Acq: 16 Oct 2020 12:05

Instrument :
 MSVOA_U
ClientSampled :
 COAH0



Tot Ion:164 Resp: 58985

Ion	Ratio	Lower	Upper
164	100		
129	96.1	68.8	127.8
131	90.3	66.7	123.9
166	126.1	83.9	155.7

